

6.1 Government of Pakistan Treasury Bills

Million Rupees

	Jun-18	Jun-19	2019		2020				
			May	Jun	Feb	Mar	Apr	May	Jun
3 Months Treasury Bills									
Issue	1,368,012	134,468	3,726,239	134,468	335,619	400,012	395,882	225,466	54,548
Discount Allowed	21,164	3,793	105,703	3,793	10,343	10,839	8,698	4,204	1,001
Discharged	73,207	25,520	2,614,650	25,520	383,263	610,371	694,009	335,619	400,012
Discount Paid	1,054	619	63,373	619	11,896	18,892	21,410	10,343	10,839
Outstanding Balance	5,179,920	4,927,527	4,818,579	4,927,527	1,639,999	1,429,640	1,131,514	1,021,360	675,896
6 Months Treasury Bills									
Issue	2,262	-	1,669	-	6,597	261,172	294,007	204,633	50,720
Discount Allowed	77	-	106	-	438	15,272	13,375	7,979	1,947
Discharged	77,954	668	-	668	7,709	96,002	211,319	240,526	22,744
Discount Paid	2,336	34	-	34	534	6,645	13,988	15,848	1,506
Outstanding Balance	70,472	3,687	4,355	3,687	627,627	792,797	875,485	839,592	867,569
12 Months Treasury Bills									
Issue	-	443	-	443	344,629	247,378	312,327	187,264	133,185
Discount Allowed	-	57	-	57	45,797	27,553	26,406	14,087	10,027
Discharged	5,653	-	-	-	-	-	-	-	443
Discount Paid	341	-	-	-	-	-	-	-	57
Outstanding Balance	44,979	443	-	443	3,253,427	3,500,805	3,813,132	4,000,396	4,133,139

Source: Domestic Markets & Monetary Management Department SBP

Note: Six months Government of Pakistan Treasury Bills restarted w. e. f. June 1998 and 3 & 12 Months Government of Pakistan Treasury Bills restarted w.e.f July 1998.

6.2 Sale / Purchase of Treasury Bills under Open Market Operation by SBP with Banks

SALE

(Billion Rupees)

PERIODS	2015-16		2016-17		2017-18		2018-19		2019-20	
	Bid Amount		Bid Amount		Bid Amount		Bid Amount		Bid Amount	
	Offered	Accepted	Offered	Accepted	Offered	Accepted	Offered	Accepted	Offered	Accepted
July	169.5	169.5	-	-	-	-	1,330.5	1,272.5	310.8	308.8
August	-	-	138.0	109.0	-	-	894.3	894.3	-	-
September	54.5	21.0	-	-	63.0	38.0	235.3	235.3	-	-
October	41.5	28.0	179.7	95.5	113.8	105.0	2,478.3	2,225.7	935.1	824.1
November	-	-	-	-	91.5	84.5	6,659.7	6,630.6	-	-
December	63.3	43.0	178.7	150.0	-	-	2,319.5	2,319.5	-	-
January	-	-	-	-	343.0	305.1	9,265.4	8,929.1	11.2	11.2
February	-	-	59.0	20.9	-	-	5,226.9	5,200.8	-	-
March	121.0	95.1	-	-	786.8	641.5	3,359.3	3,354.3	38.5	35.0
April	116.9	61.9	-	-	165.9	123.3	3,257.3	3,163.8	598.1	392.3
May	120.5	83.6	-	-	136.5	100.0	5,781.2	5,777.6	-	-
June	66.8	44.3	51.6	40.0	-	-	111.0	105.0	-	-
Average										
per month	62.8	45.5	50.6	34.6	141.7	116.4	3,409.9	3,342.4	172.1	142.8
per day	2.1	1.5	1.7	1.2	4.7	3.9	113.7	111.4	5.7	4.8

PURCHASE

PERIODS	2015-16		2016-17		2017-18		2018-19		2019-20	
	Amount		Amount		Amount		Amount		Amount	
	Offered	Injected	Offered	Injected	Offered	Injected	Offered	Injected	Offered	Injected
July	4,335.1	4,200.5	6,965.6	6,655.1	6,181.3	5,797.7	3,608.3	2,906.8	4,687.7	4,374.4
August	4,637.3	4,553.5	3,951.0	3,873.5	6,066.4	5,940.3	8,370.5	8,249.2	8,269.7	7,999.3
September	6,602.8	5,818.4	6,206.9	5,870.9	7,881.6	7,733.5	1,959.3	1,670.0	7,450.5	7,317.3
October	7,058.8	6,668.1	4,024.4	3,960.4	6,245.0	5,968.4	99.5	71.0	5,288.7	5,241.3
November	5,432.5	5,318.9	3,242.3	3,096.9	6,454.0	6,252.5	-	-	3,423.6	3,123.3
December	6,465.0	6,121.8	4,551.0	4,234.6	8,943.3	8,590.5	6,569.7	5,555.1	4,196.8	3,954.6
January	4,863.4	4,598.6	4,099.7	3,878.5	4,612.4	4,390.3	-	-	4,528.5	4,345.5
February	5,585.2	5,253.8	4,127.9	3,953.7	5,946.7	5,522.7	3,257.4	3,066.0	3,769.0	3,508.9
March	7,165.9	6,908.0	5,537.5	5,373.8	4,140.8	3,906.9	563.7	484.0	5,049.1	5,023.6
April	6,258.7	6,108.9	5,270.7	5,195.4	3,523.0	3,105.1	548.5	442.0	5,087.5	5,042.0
May	5,158.8	5,105.8	5,374.6	5,278.7	3,198.2	2,741.0	1,535.2	1,464.4	5,568.1	5,458.1
June	7,564.2	6,943.7	7,385.0	7,049.8	7,129.4	6,586.2	3,977.5	3,399.7	5,508.8	5,264.1
Average										
per month	5,927.3	5,633.3	5,061.4	4,868.4	5,860.2	5,544.6	2,540.8	2,275.7	5,235.6	5,054.3
per day	197.6	187.8	168.7	162.3	195.3	184.8	84.7	75.9	174.5	168.5

Source: Domestic Markets & Monetary Management Department, SBP

6.3 SBP Overnight Repo/ Reverse Repo Facilities

Cash Accommodation

(Million Rupees)

PERIODS	2015-16		2016-17		2017-18		2018-19		2019-20	
	SBP Overnight Reverse Repo (Ceiling)	SBP Overnight Repo (Floor)	SBP Overnight Reverse Repo (Ceiling)	SBP Overnight Repo (Floor)	SBP Overnight Reverse Repo (Ceiling)	SBP Overnight Repo (Floor)	SBP Overnight Reverse Repo (Ceiling)	SBP Overnight Repo (Floor)	SBP Overnight Reverse Repo (Ceiling)	SBP Overnight Repo (Floor)
July	244,850	6,400	164,950	6,650	7,800	-	167,100	107,000	99,550	355,750
August	137,300	1,000	269,000	5,200	37,200	-	46,900	39,500	186,000	-
September	540,000	81,850	70,500	-	40,800	3,500	277,900	-	167,150	93,400
October	204,100	7,700	28,100	6,000	67,000	13,500	265,300	82,500	76,400	214,450
November	76,600	2,000	800	25,650	45,900	-	54,600	-	25,400	29,700
December	298,100	61,650	36,650	11,700	150,400	38,500	276,800	-	44,400	30,600
January	121,600	-	110,100	-	-	12,400	49,900	162,000	77,750	51,100
February	96,200	18,350	11,600	33,900	12,400	-	109,400	4,700	47,300	-
March	288,600	92,400	39,100	22,800	47,000	47,800	57,275	16,150	50,900	30,000
April	77,900	-	45,000	61,800	95,000	-	692,600	201,900	56,700	70,500
May	44,000	4,000	25,000	173,000	92,900	63,800	205,100	115,200	114,850	107,300
June	625,500	255,000	134,850	18,650	242,500	-	257,000	104,200	89,900	205,500
Average										
per month	229,563	44,196	77,971	30,446	69,908	14,958	204,990	69,429	86,358	99,025
per day	7,652	1,473	2,599	1,015	2,330	499	6,833	2,314	2,879	3,301

SBP Overnight Repo/ Reverse Repo Rates

(Percent per annum)

PERIODS	2015-16		2016-17		2017-18		2018-19		2019-20	
	SBP Reverse Repo Rate ¹ (Ceiling)	SBP Repo Rate ² (Floor)	SBP Reverse Repo Rate ¹ (Ceiling)	SBP Repo Rate ² (Floor)	SBP Reverse Repo Rate ¹ (Ceiling)	SBP Repo Rate ² (Floor)	SBP Reverse Repo Rate ¹ (Ceiling)	SBP Repo Rate ² (Floor)	SBP Reverse Repo Rate ¹ (Ceiling)	SBP Repo Rate ² (Floor)
July	7.00	5.00	6.25	4.25	6.25	4.25	8.00	6.00	13.75	11.75
August	7.00	5.00	6.25	4.25	6.25	4.25	8.00	6.00	13.75	11.75
September	6.50	4.50	6.25	4.25	6.25	4.25	8.00	6.00	13.75	11.75
October	6.50	4.50	6.25	4.25	6.25	4.25	9.00	7.00	13.75	11.75
November	6.50	4.50	6.25	4.25	6.25	4.25	9.00	7.00	13.75	11.75
December	6.50	4.50	6.25	4.25	6.25	4.25	10.50	8.50	13.75	11.75
January	6.50	4.50	6.25	4.25	6.50	4.50	10.50	8.50	13.75	11.75
February	6.50	4.50	6.25	4.25	6.50	4.50	10.75	8.75	13.75	11.75
March	6.50	4.50	6.25	4.25	6.50	4.50	10.75	8.75	12.00	10.00
April	6.50	4.50	6.25	4.25	6.50	4.50	11.25	9.25	10.00	8.00
May	6.25	4.25	6.25	4.25	7.00	5.00	12.75	10.75	9.00	7.00
June	6.25	4.25	6.25	4.25	7.00	5.00	12.75	10.75	8.00	6.00

Source: Domestic Markets & Monetary Management Department, SBP

NOTE:1. SBP 3-day repo rate was renamed as SBP reverse repo rate w.e.f. August 17, 2009. SBP reverse repo rate (also known as policy rate or discount rate) is the rate at which banks borrow from SBP on an overnight basis.

2.SBP Repo rate (introduced w.e.f. August 17, 2009) is the rate at which banks deposit their end-of-day excess cash with SBP on an overnight basis.

6.4 Auction of Government of Pakistan Market Treasury Bills

(Million Rupees)

AUCTION SETTLEMENT DATE	3 Months Treasury Bills				6 Months Treasury Bills				12 Months Treasury Bills			
	Amount Offered	Amount Accepted	Cut-off Yield ()	Weighted Average ()	Amount Offered	Amount Accepted	Cut-off Yield ()	Weighted Average ()	Amount Offered	Amount Accepted	Cut-off Yield ()	Weighted Average ()
2019												
10-Jun-19	211,354	110,854	12.7493	12.7453	**	**	**	**	2,500	500	13.1500	13.1500
20-Jun-19	48,408	27,408	12.7491	12.7381	5,245	*	*	*	15,468	*	*	*
04-Jul-19	239,120	114,120	12.7495	12.7421	**	**	**	**	1,000	*	*	*
18-Jul-19	2,077,612	2,063,887	13.7499	13.6628	147,314	144,564	13.9500	13.8479	125,178	112,728	14.1000	14.0167
01-Aug-19	857,768	822,109	13.7499	13.7457	45,737	34,537	13.9500	13.9498	55,235	52,435	14.2400	14.1557
16-Aug-19	1,247,240	1,174,340	13.7499	13.7483	36,566	5,866	13.9500	13.9389	188,493	96,618	14.2499	14.2169
29-Aug-19	260,296	173,996	13.7499	13.7490	7,877	2,377	13.9399	13.9399	710,643	604,568	14.2400	14.1880
12-Sep-19	123,469	74,916	13.7397	13.7361	97,996	70,496	13.9291	13.9064	1,473,175	367,357	13.9300	13.8312
26-Sep-19	130,708	125,508	13.7300	13.7179	83,576	32,151	13.8390	13.8290	994,722	410,095	13.8499	13.7651
10-Oct-19	538,968	345,945	13.6898	13.6391	127,576	20,776	13.5549	13.5549	1,967,839	516,828	13.4699	13.4272
24-Oct-19	929,302	199,366	13.2981	13.2504	290,162	204,532	13.2999	13.2468	882,403	266,720	12.7900	12.7405
07-Nov-19	928,738	531,213	13.2902	13.1703	335,702	238,797	13.2899	13.2097	313,499	117,789	12.7900	12.7127
21-Nov-19	235,844	191,844	13.5899	13.4608	110,117	17,577	13.2899	13.2766	188,606	46,606	13.2499	13.0365
05-Dec-19	453,957	203,315	13.5391	13.5121	121,761	9,561	13.2899	13.2888	623,912	185,568	13.1400	13.0645
19-Dec-19	462,584	234,722	13.4897	13.4549	54,039	14,689	13.2899	13.2678	322,261	234,811	13.1340	13.0220
2020												
02-Jan-20	650,761	394,541	13.4851	13.4462	22,363	6,527	13.2899	13.2875	232,997	90,947	13.1340	13.1068
16-Jan-20	739,589	214,553	13.4694	13.4438	149,572	23,822	13.2890	13.2051	276,131	88,729	13.1340	13.0795
30-Jan-20	978,493	500,866	13.4296	13.3885	65,916	23,416	13.2890	13.2351	182,792	109,292	13.1340	13.1158
13-Feb-20	794,533	158,357	13.4149	13.4022	131,487	3,287	13.2999	13.2999	153,620	131,520	13.5199	13.3950
27-Feb-20	307,164	187,605	13.3899	13.3811	5,748	3,748	13.3401	13.3401	1,129,896	258,905	13.3300	13.2898
12-Mar-20	483,840	155,683	12.7288	12.6887	369,046	115,622	12.5050	12.4788	833,222	105,454	12.0000	11.9786
26-Mar-20	350,730	255,168	11.2985	11.2174	218,321	160,821	11.2989	11.1895	811,419	169,477	10.8699	10.6706
09-Apr-20	519,651	208,731	10.8995	10.8049	605,554	161,455	10.3000	10.2570	876,379	176,145	9.6490	9.5674
23-Apr-20	487,233	195,850	8.3996	8.2140	438,276	145,926	7.9997	7.8829	594,246	162,588	7.4750	7.3216
07-May-20	287,470	151,220	8.3879	8.0931	244,376	157,876	7.9997	7.8447	169,276	109,276	7.7500	7.4292
21-May-20	375,462	78,450	8.1496	8.1207	274,862	54,736	7.8050	7.7465	510,466	92,075	7.7499	7.6795
04-Jun-20	285,925	44,875	8.1298	8.0377	153,504	34,504	7.9757	7.8170	390,256	93,152	7.7101	7.6898
18-Jun-20	167,250	10,673	7.7999	7.6897	208,148	18,163	7.4847	7.4786	203,263	50,060	7.3600	7.2892

Source: Domestic Markets & Monetary Management Department, SBP

* = Bids Rejected
**= No Bids Received

6.5 Auction of Pakistan Investment Bonds (PIBs)

Fixed Rate								Floating Rate			
AUCTION SETTLEMENT DATE	Tenure	Coupon Rate (%)	Amount Offered	Amount Accepted	Price Accepted = Rs.100	Cut-off Yield Accepted (%)	(Million Rupees)		Amount Offered ¹	Amount Accepted ²	Cutoff Margin ³ (bps)
							Weighted Yield Average Accepted (%)				
14-Nov-19	3-Years	9.00	113,039.30	59,166.90	93.3663	11.7999	11.7640				
	5-Years	9.50	116,628.00	52,215.00	92.8700	11.4500	11.3903				
	10-Years	10.00	40,167.00	22,554.00	92.0875	11.3500	11.2800	128,100.00	54,500.00	101.7734	
	20-Years	11.00	1,500.00	*							
12-Dec-19	3-Years	9.00	115,708.20	58,637.20	93.6238	11.7500	11.6954				
	5-Years	9.50	138,656.40	56,046.00	93.8369	11.1939	11.1511	142,450.00	72,200.00	101.7689	
	10-Years	10.00	82,400.00	36,760.00	94.0876	10.9968	10.9453				
	20-Years	11.00	1,500.00	*							
9-Jan-20	3-Years	9.00	77,560.00	28,061.60	93.7757	11.7500	11.7226				
	5-Years	9.50	81,500.00	55,470.00	93.9145	11.1938	11.0899				
	10-Years	10.00	24,240.00	20,346.00	94.6633	10.9000	10.8825	87,050.00	58,050.00	101.8543	
	20-Years	11.00	1,500.00	*	-	-	-				
6-Feb-20	3-Years	9.00	41,451.50	20,024.20	93.3037	12.0500	11.9582				
	5-Years	9.50	49,220.00	30,256.50	93.3011	11.4000	11.3371				
	10-Years	10.00	34,660.00	10,370.00	94.1319	11.0000	10.9600	82,411.60	60,536.60	101.2532	
	20-Years	11.00	1,500.00	*	-	-	-				
5-Mar-20	3-Years	9.00	243,735.40	49,714.50	94.4350	11.5888	11.5351				
	5-Years	9.50	105,675.00	41,455.50	94.7760	10.9900	10.9350				
	10-Years	10.00	74,491.50	39,581.50	95.0160	10.8500	10.7519	251,852.50	60,750.00	102.5295	
	20-Years	11.00	1,000.00	1,000.00	93.9315	11.7999	11.7999				
16-Apr-20	3-Years	9.00	243,745.00	46,717.30	100.9330	8.5600	8.5315				
	5-Years	9.50	63,762.50	36,442.20	102.3973	8.8300	8.7085				
	10-Years	10.00	21,840.80	14,329.20	106.2502	9.0000	8.9725	109,500.00	50,325.00	102.5594	
	15-Years	10.50	13,275.00	10,275.00	100.0748	10.4900	10.4540				
	20-Years	11.00	6,275.00	5,012.80	102.4152	10.7000	10.7000				
29-May-20	3-Years	9.00	142,350.00	82,690.90	102.8076	7.6400	7.5239				
	5-Years	9.50	63,900.00	59,546.50	105.1685	8.0500	7.8740				
	10-Years	10.00	29,500.00	27,087.50	108.2196	8.6900	8.4767	80,300.00	66,300.00	101.5366	
	15-Years	10.50	3,500.00	2,525.00	104.0444	9.9699	9.6640				
	20-Years	11.00	1,000.00	-	-	-	-				
18-Jun-20	3-Years							84,100.00	60,552.00	45	
	5-Years							48,500.00	34,500.00	49	
	10-Years							31,500.00	29,500.00	70	
26-Jun-20	3-Years	9.00	118,657.00	72,685.00	102.0482	7.9700	7.8223				
	5-Years	9.50	33,101.00	21,961.70	103.6844	8.4400	8.3542				
	10-Years	10.00	18,594.00	16,197.50	106.2194	8.9900	8.8710				
	15-Years	10.50	6,100.00	4,000.00	104.5817	9.9000	9.8675				
	20-Years	11.00	100.00	100.00	103.9771	10.5100	10.5100				

*= Bid Rejected

Source: Domestic Markets & Monetary Management Department, SBP

1-Amount offered only includes Competitive bids.

2-Amount accepted also includes Non-Competitive bids and Short selling. Securities will be issued at Face Value (Rs. 100)

3-This cut-off margin will be applicable to all accepted bids.

6.6 KIBOR

(Percent per annum)

PERIODS	1 Week		2 Weeks		1Month		3 Months		6 Months		9 Months		12 Months		
	Bid	Offer	Bid	Offer	Bid	Offer	Bid	Offer	Bid	Offer	Bid	Offer	Bid	Offer	
2019 May	Month Average	11.20	11.70	11.26	11.76	11.37	11.87	11.79	12.04	11.92	12.17	12.02	12.52	12.14	12.64
	End-Month	12.20	12.70	12.23	12.73	12.29	12.79	12.63	12.88	12.76	13.01	12.86	13.36	12.97	13.47
Jun	Month Average	12.24	12.74	12.27	12.77	12.32	12.82	12.68	12.93	12.81	13.06	12.92	13.42	13.06	13.56
	End-Month	12.27	12.77	12.32	12.82	12.37	12.87	12.72	12.97	12.86	13.11	12.97	13.47	13.13	13.63
Jul	Month Average	12.69	13.19	12.75	13.25	12.83	13.33	13.18	13.43	13.31	13.56	13.38	13.88	13.47	13.97
	End-Month	13.21	13.71	13.26	13.76	13.30	13.80	13.65	13.90	13.76	14.01	13.81	14.31	13.83	14.33
Aug	Month Average	13.21	13.71	13.27	13.77	13.31	13.81	13.66	13.91	13.82	14.07	13.88	14.38	13.94	14.44
	End-Month	13.21	13.71	13.26	13.76	13.31	13.81	13.68	13.93	13.83	14.08	13.89	14.39	13.95	14.45
Sep	Month Average	13.18	13.68	13.23	13.73	13.30	13.80	13.62	13.87	13.71	13.96	13.69	14.19	13.62	14.12
	End-Month	13.20	13.70	13.25	13.75	13.31	13.81	13.60	13.85	13.65	13.90	13.63	14.13	13.55	14.05
Oct	Month Average	13.09	13.59	13.14	13.64	13.19	13.69	13.32	13.58	13.37	13.62	13.23	13.73	13.09	13.59
	End-Month	12.95	13.45	13.00	13.50	13.02	13.52	13.07	13.32	13.08	13.33	12.86	13.36	12.78	13.28
Nov	Month Average	13.05	13.55	13.07	13.57	13.09	13.59	13.24	13.49	13.24	13.49	12.97	13.47	12.92	13.42
	End-Month	13.07	13.57	13.09	13.59	13.14	13.64	13.39	13.64	13.36	13.61	13.11	13.61	13.06	13.56
Dec	Month Average	13.08	13.58	13.11	13.61	13.15	13.65	13.30	13.55	13.25	13.50	13.03	13.53	12.93	13.43
	End-Month	13.12	13.62	13.14	13.64	13.18	13.68	13.30	13.55	13.24	13.49	13.01	13.51	12.94	13.44
2020 Jan	Month Average	13.06	13.56	13.10	13.60	13.14	13.64	13.28	13.53	13.23	13.48	13.08	13.58	13.00	13.50
	End-Month	13.05	13.55	13.10	13.60	13.12	13.62	13.24	13.49	13.19	13.44	13.08	13.58	12.99	13.49
Feb	Month Average	13.06	13.56	13.10	13.60	13.14	13.64	13.27	13.52	13.24	13.49	13.15	13.65	13.13	13.63
	End-Month	13.06	13.56	13.10	13.60	13.14	13.64	13.21	13.46	13.20	13.45	13.13	13.63	13.06	13.56
Mar	Month Average	12.35	12.85	12.32	12.82	12.25	12.75	12.20	12.45	12.09	12.34	11.82	12.32	11.69	12.19
	End-Month	10.86	11.36	10.90	11.40	10.92	11.42	10.97	11.22	10.91	11.16	10.57	11.07	10.41	10.91
Apr	Month Average	9.96	10.46	9.96	10.46	9.89	10.39	9.59	9.84	9.24	9.49	8.90	9.40	8.73	9.23
	End-Month	8.78	9.28	8.72	9.22	8.59	9.09	7.92	8.17	7.44	7.69	7.14	7.64	6.99	7.49
May	Month Average	8.43	8.93	8.37	8.87	8.23	8.73	7.96	8.21	7.73	7.98	7.48	7.98	7.40	7.90
	End-Month	7.88	8.38	7.89	8.39	7.86	8.36	7.90	8.15	7.63	7.88	7.51	8.01	7.47	7.97
Jun	Month Average	7.77	8.27	7.76	8.26	7.71	8.21	7.71	7.96	7.52	7.77	7.35	7.85	7.30	7.80
	End-Month	6.95	7.45	6.95	7.45	6.94	7.44	7.01	7.26	6.99	7.24	6.89	7.39	6.85	7.35

KIBOR :Karachi Interbank Offered Rate

Source: Reuters

Archive Link: http://www.sbp.org.pk/ecodata/kibor_index.asp

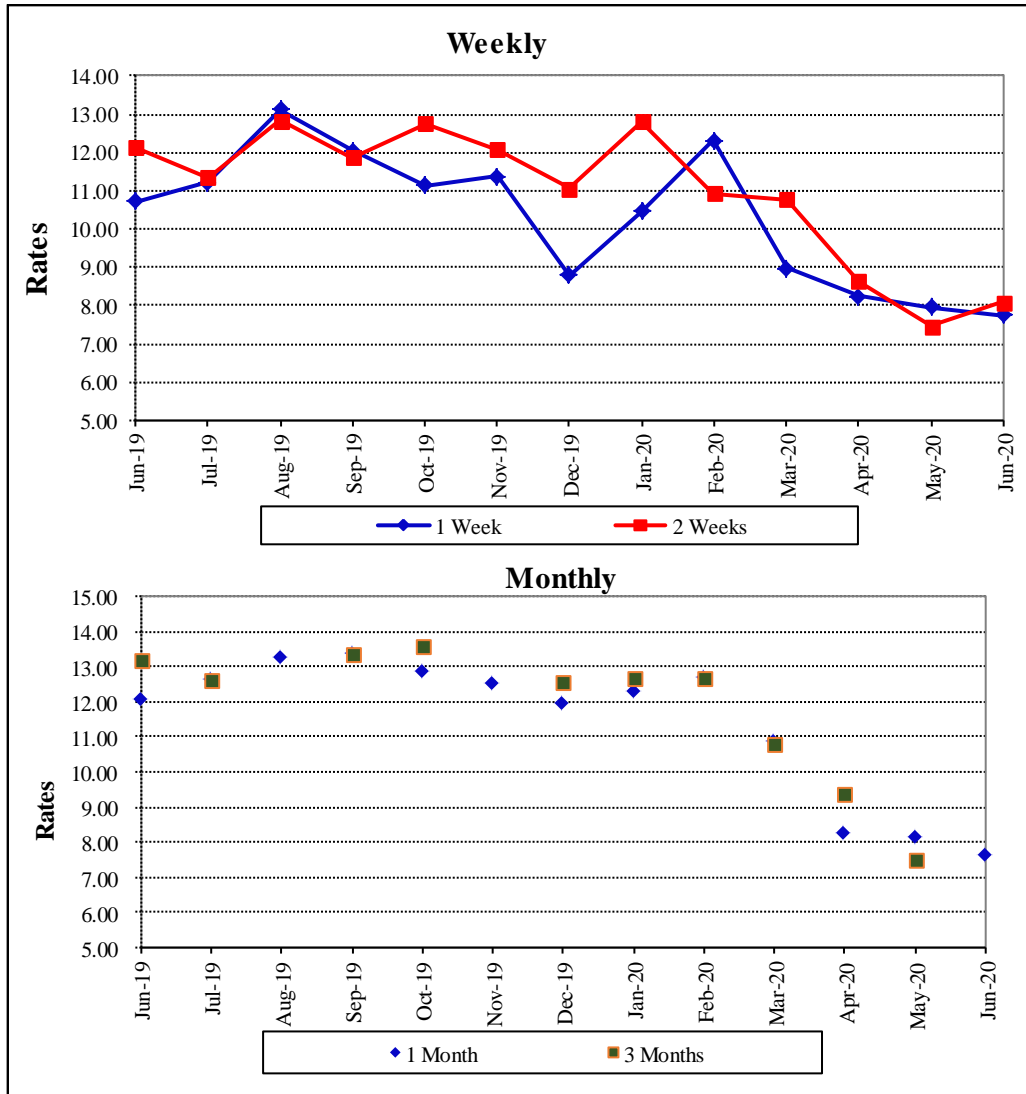
6.7 Inter-Bank Weighted Average Call Rates

		(Per Annum)						
PERIODS		Overnight	1 Week	2 Weeks	1 Month	3 Months	6 Months	
2019	Apr	10.29	9.50	9.86	10.19	10.87	-	
	May	10.96	10.96	11.50	12.33	-	10.92	
	Jun	11.47	10.71	12.12	12.03	13.18	-	
	Jul	12.10	11.20	11.35	12.65	12.62	12.96	
	Aug	13.19	13.13	12.84	13.23	-	13.61	
	Sep	12.59	12.05	11.88	13.34	13.35	13.58	
	Oct	12.62	11.13	12.74	12.86	13.60	13.38	
	Nov	12.65	11.37	12.08	12.52	-	-	
	Dec	12.53	8.79	11.07	11.96	12.59	12.65	
	2020	Jan	12.65	10.46	12.81	12.30	12.65	12.50
		Feb	12.67	12.31	10.93	12.67	12.70	12.74
		Mar	10.20	8.99	10.77	10.88	10.81	11.95
Apr		9.13	8.23	8.64	8.25	9.38	-	
May		8.28	7.96	7.47	8.12	7.50	-	
Jun		7.97	7.76	8.07	7.63	-	7.15	

Source: Domestic Markets & Monetary Management Department, SBP

Note: Weighted Average Call Rates of all the call deals executed during the month.

Inter- Bank Weighted Average Call Rates



6.8 SBP Mark to Market Rates Major Currencies

Date	US Dollar			Euro			Japanese Yen			UK Pound Sterling		
	Ready	1Week	1 Month	Ready	1Week	1 Month	Ready	1Week	1 Month	Ready	1Week	1 Month
1-Jun-20	164.0844	164.3280	164.8422	182.7736	183.0682	183.7301	1.5271	1.5295	1.5349	203.6616	203.9680	204.6296
2-Jun-20	164.8970	165.1502	165.6792	184.0992	184.4048	185.0984	1.5299	1.5323	1.5379	206.9127	207.2346	207.9264
03-Jun-20	164.3270	164.5883	165.1281	184.2598	184.5749	185.2862	1.5107	1.5132	1.5189	206.7891	207.1214	207.8363
04-Jun-20	163.6643	163.9236	164.5013	183.2303	183.5433	184.2974	1.4995	1.5020	1.5080	204.7113	205.0379	205.7983
05-Jun-20	163.3011	163.5647	164.1285	185.4529	185.7748	186.5136	1.4928	1.4953	1.5011	206.7065	207.0419	207.7839
08-Jun-20	163.6208	163.8856	164.4704	184.9651	185.2879	186.0560	1.4939	1.4964	1.5025	207.6348	207.9732	208.7474
09-Jun-20	164.3395	164.6066	165.2539	184.9888	185.3132	186.1581	1.5224	1.5249	1.5317	207.9470	208.2880	209.1457
10-Jun-20	164.5543	164.8264	165.4628	187.1394	187.4730	188.3047	1.5335	1.5361	1.5429	210.2182	210.5687	211.4177
11-Jun-20	164.5874	164.8546	165.5300	187.1689	187.4978	188.3718	1.5386	1.5411	1.5482	208.7545	209.0977	209.9922
12-Jun-20	164.2461	164.4900	165.0494	185.8280	186.1301	186.8718	1.5328	1.5352	1.5411	206.9993	207.3124	208.0554
15-Jun-20	164.8560	165.0969	165.5922	185.5537	185.8512	186.5179	1.5353	1.5377	1.5430	206.7294	207.0378	207.6990
16-Jun-20	164.8792	165.1341	165.6424	186.8576	187.1729	187.8628	1.5351	1.5376	1.5430	208.3084	208.6368	209.3211
17-Jun-20	165.7143	165.9708	166.4899	186.7765	187.0910	187.7796	1.5427	1.5452	1.5507	208.2697	208.5951	209.2819
18-Jun-20	166.3500	166.6155	167.2138	186.9608	187.2845	188.0556	1.5550	1.5575	1.5637	208.2619	208.5981	209.3791
19-Jun-20	166.6380	166.9013	167.4687	186.8095	187.1310	187.8683	1.5582	1.5607	1.5667	207.2644	207.5965	208.3358
22-Jun-20	166.5870	166.8453	167.3986	186.7524	187.0753	187.7925	1.5581	1.5608	1.5666	206.8094	207.1435	207.8568
23-Jun-20	167.6508	167.9019	168.4699	189.2190	189.5367	190.2849	1.5656	1.5682	1.5740	209.5132	209.8407	210.5808
24-Jun-20	167.3631	167.6377	168.1987	189.0785	189.4208	190.1528	1.5711	1.5739	1.5796	208.9696	209.3242	210.0496
25-Jun-20	167.3645	167.6166	168.2576	188.1009	188.4150	189.2301	1.5613	1.5638	1.5703	208.2432	208.5694	209.3914
26-Jun-20	167.6680	167.8930	168.4854	188.0397	188.3224	189.0833	1.5660	1.5683	1.5743	208.0425	208.3347	209.0965
29-Jun-20	168.1895	168.4077	168.9766	189.2300	189.5014	190.2478	1.5693	1.5714	1.5773	207.4954	207.7721	208.5055
30-Jun-20	168.0506	168.2606	168.8501	188.6116	188.8725	189.6350	1.5607	1.5628	1.5687	206.5005	206.7656	207.5225

Source: Domestic Markets & Monetary Management Department, SBP

6.8 SBP Mark to Market Rates Major Currencies

Date	Swiss Frank			Australian Dollar			Saudi Arabian Riyal			Kuwaiti Dinar		
	Ready	1Week	1 Month	Ready	1Week	1 Month	Ready	1Week	1 Month	Ready	1Week	1 Month
1-Jun-20	171.2245	171.5094	172.1625	110.6093	110.7757	111.1257	43.7034	43.7648	43.8959	532.5516	533.2209	534.4730
2-Jun-20	172.0814	172.3764	173.0574	112.8060	112.9808	113.3455	43.9257	43.9908	44.1258	535.3453	536.0467	537.3680
03-Jun-20	170.7027	171.0038	171.6952	113.5006	113.6825	114.0580	43.7797	43.8458	43.9849	533.3561	534.1010	535.4946
04-Jun-20	170.1204	170.4198	171.1537	112.7974	112.9766	113.3762	43.5915	43.6571	43.8080	531.2057	531.9431	533.4996
05-Jun-20	170.8349	171.1402	171.8520	114.2618	114.4469	114.8432	43.4948	43.5615	43.7093	530.4566	531.2169	532.6903
08-Jun-20	170.0487	170.3535	171.0903	114.4528	114.6396	115.0518	43.5857	43.6539	43.8074	531.2709	532.0244	533.5543
09-Jun-20	172.0473	172.3574	173.1777	113.5915	113.7774	114.2275	43.8005	43.8702	44.0395	533.8999	534.6700	536.4461
10-Jun-20	173.8923	174.2109	175.0188	115.1798	115.3716	115.8206	43.8578	43.9294	44.0964	535.1360	535.9450	537.7712
11-Jun-20	174.8141	175.1291	175.9761	114.2155	114.4024	114.8738	43.8666	43.9363	44.1131	535.2096	535.9991	537.9591
12-Jun-20	173.8146	174.1057	174.8297	113.0342	113.2039	113.5927	43.7639	43.8280	43.9715	533.8298	534.5548	536.1297
15-Jun-20	173.0408	173.3264	173.9783	112.4236	112.5897	112.9318	43.9323	43.9930	44.1162	535.8041	536.5254	537.9078
16-Jun-20	173.8315	174.1330	174.8098	114.0799	114.2587	114.6161	43.9502	44.0146	44.1419	536.1053	536.8752	538.2798
17-Jun-20	174.4452	174.7480	175.4217	114.5417	114.7231	115.0901	44.1763	44.2412	44.3665	538.7686	539.5485	540.9643
18-Jun-20	175.2529	175.5653	176.3155	114.3157	114.5009	114.9184	44.3482	44.4154	44.5630	540.8180	541.6141	543.3007
19-Jun-20	175.3623	175.6722	176.3913	114.3720	114.5556	114.9516	44.4250	44.4916	44.6310	541.5952	542.3889	543.9904
22-Jun-20	175.2441	175.5554	176.2540	114.5785	114.7595	115.1468	44.4031	44.4636	44.6039	541.1311	541.9027	543.4887
23-Jun-20	177.3707	177.6768	178.4065	116.0479	116.2248	116.6250	44.6950	44.7559	44.8972	544.8344	545.5964	547.1846
24-Jun-20	177.1413	177.4711	178.1859	115.7065	115.8997	116.2946	44.6183	44.6879	44.8255	544.3588	545.1871	546.7655
25-Jun-20	176.4424	176.7460	177.5381	115.0966	115.2729	115.7210	44.6186	44.6823	44.8388	543.9210	544.6700	546.5128
26-Jun-20	176.8370	177.1113	177.8576	115.4310	115.5890	116.0056	44.6936	44.7417	44.8858	544.8189	545.4613	547.1361
29-Jun-20	177.6400	177.9043	178.6389	115.4873	115.6406	116.0401	44.8350	44.8872	45.0208	546.3360	546.9913	548.5467
30-Jun-20	176.5886	176.8425	177.5884	115.1819	115.3299	115.7442	44.8015	44.8515	44.9907	545.8848	546.4987	548.1514

Source: Domestic Markets & Monetary Management Department, SBP

Archive Link: <http://www.sbp.org.pk/ecodata/rates/m2m/M2M-History.asp>

6.9 Secondary Market Transactions in Government Securities

(Billion Rupees)

SECURITIES / TRANSACTIONS	2019							2020						
	Jun	Jul	Aug	Sep	Oct	Nov	Dec	Jan	Feb	Mar	Apr	May	Jun	
PIBs														
Purchases	841.8	750.8	1,142.8	1,271.8	982.7	1,495.5	1,737.4	1,468.3	1,700.4	2,364.3	2,511.3	2,342.0	2,761.6	
Non Banks	Repo	4.1	27.5	0.6	10.2	20.4	19.0	1.4	12.3	10.3	14.8	7.2	15.4	33.6
	outright	130.0	138.9	93.2	124.3	129.6	160.0	71.5	157.0	304.7	144.6	73.0	59.8	98.5
Banks/PDs	Repo	333.7	268.6	265.2	319.4	306.5	388.7	306.4	366.9	312.3	298.3	316.4	389.8	357.1
	outright	202.8	190.1	310.4	398.0	280.2	369.5	391.7	325.7	531.9	661.3	490.5	266.1	444.1
SBP	Repo	171.2	125.7	473.4	419.9	246.1	558.2	966.4	606.4	541.1	1,245.3	1,624.2	1,610.9	1,828.3
Sales	841.8	750.8	1,142.8	1,271.8	982.7	1,495.5	1,737.4	1,468.3	1,700.4	2,364.3	2,511.3	2,342.0	2,761.6	
Non Banks	Repo	129.2	73.1	54.3	56.0	110.6	143.7	65.1	107.0	78.7	61.6	127.8	148.4	120.6
	outright	45.8	43.2	49.9	95.5	54.6	69.3	76.3	69.6	251.7	163.2	184.7	35.5	96.7
Banks/PDs	Repo	379.8	348.7	684.9	693.5	462.3	822.2	1,209.1	878.5	785.0	1,496.9	1,820.0	1,867.6	2,098.3
	outright	287.0	285.7	353.7	426.8	355.2	460.3	386.8	413.2	584.9	642.7	378.8	290.4	445.8
SBP	Repo	-	-	-	-	-	-	-	-	-	-	-	-	-
Net Position	-	-	-	-	-	-	-	-	-	-	-	-	-	
Treasury Bills														
Purchases	7,200.1	10,196.6	12,450.6	12,310.5	11,030.7	7,530.5	7,656.6	9,267.6	7,177.5	9,323.8	8,644.6	7,393.2	7,407.4	
Non Banks	Repo	99.6	184.2	108.7	82.1	83.8	112.5	147.0	67.9	138.3	157.0	48.1	36.7	89.0
	outright	340.1	561.2	1,036.5	892.2	814.0	492.0	442.8	1,030.0	532.9	526.9	647.3	389.8	347.2
Banks/PDs	Repo	2,496.7	3,891.5	2,294.6	2,129.6	3,329.6	3,286.0	2,961.3	3,100.8	2,523.4	2,652.1	2,703.7	2,170.7	2,550.2
	outright	871.8	1,310.9	1,628.9	2,155.3	1,731.8	1,049.6	1,072.9	1,252.0	968.0	2,250.6	1,770.9	1,256.8	895.4
SBP	Repo	3,392.0	4,248.8	7,382.0	7,051.2	5,071.6	2,590.5	3,032.6	3,816.9	3,015.1	3,737.2	3,474.5	3,539.2	3,525.7
Sales	7,200.1	10,196.6	12,450.6	12,310.5	11,030.7	7,530.5	7,656.6	9,267.6	7,177.5	9,323.8	8,644.6	7,393.2	7,407.4	
Non Banks	Repo	12.2	31.0	46.5	154.2	263.1	239.9	133.9	222.1	192.4	147.3	94.1	66.5	97.3
	outright	446.7	257.8	499.0	927.4	588.2	279.2	393.5	351.2	314.5	770.8	433.2	317.3	418.4
Banks/PDs	Repo	5,766.8	7,540.9	9,738.7	9,072.7	7,194.2	5,719.3	5,976.4	6,701.3	5,484.2	6,369.0	5,669.5	5,572.9	5,862.0
	outright	765.2	1,614.3	2,166.4	2,120.1	1,957.6	1,262.4	1,122.2	1,930.7	1,186.3	2,006.7	1,985.1	1,329.3	824.2
SBP	Repo	209.2	752.7	-	36.1	1,027.6	29.7	30.6	62.3	-	30.0	462.8	107.3	205.5
Net Position	-	-	-	-	-	-	-	-	-	-	-	-	-	

PDs: Primary Dealers

Source: Domestic Markets & Monetary Management Department, SBP

Note: Month-wise volume of repo/outright transactions during the month.