

6.1 Government of Pakistan Treasury Bills

Million Rupees									
	Jun-16	Jun-17	2017			2018			
			Mar	Apr	Dec	Jan	Feb	Mar	Apr
3 Months Treasury Bills									
Issue	40,900	287,915	432,158	548,760	622,938	1,559,211.4	2,239,416	357,461	3,308,876
Discount Allowed	557	3,970	5,920	7,553	8,589	21,498.6	31,994	5,131	47,412
Discharged	21,042	238,038	273,951	452,820	737,434	1,497,491.0	1,133,074	1,111,973	2,223,758
Discount Paid	298	3,263	3,753	6,156	10,167	20,647.7	15,622	15,331	31,220
Outstanding Balance	242,875	1,364,406	1,173,139	1,269,079	3,253,503	3,315,224.6	4,421,566	3,667,054	4,752,172
6 Months Treasury Bills									
Issue	161,549	222,003	411,151	87,052	77,954	-	-	-	64,936
Discount Allowed	4,697	6,654	12,281	2,608	2,336	-	-	-	2,056
Discharged	41,672	47,523	117,642	28,700	222,003	445,476.6	242,218	181,711	34,823
Discount Paid	1,312	1,417	3,464	845	6,654	13,352.9	7,259	5,446	1,044
Outstanding Balance	816,883	1,838,876	1,561,687	1,620,038	1,163,423	717,947.4	475,729	294,018	324,130
12 Months Treasury Bills									
Issue	129,848	5,654	2,867	7,377	-	-	-	-	-
Discount Allowed	7,711	341	171	441	-	-	-	-	-
Discharged	7,621	129,848	295,456	36,327	-	130,461.8	215,515	2,867	7,377
Discount Paid	520	7,711	18,285	2,249	-	7,732.8	12,849	171	441
Outstanding Balance	1,712,268	884,431	1,116,601	1,087,652	413,268	282,807.1	67,292	64,425	57,048

Source: Domestic Markets & Monetary Management Department SBP

Note: Six months Government of Pakistan Treasury Bills restarted w. e. f. June 1998 and 3 & 12 Months Government of Pakistan Treasury Bills restarted w.e.f July 1998.

6.2 Sale / Purchase of Treasury Bills under Open Market Operation by SBP with Banks

SALE

(Billion Rupees)

PERIODS	2013-14		2014-15		2015-16		2016-17		2017-18	
	Bid Amount		Bid Amount		Bid Amount		Bid Amount		Bid Amount	
	Offered	Accepted	Offered	Accepted	Offered	Accepted	Offered	Accepted	Offered	Accepted
July	161.5	142.4	173.7	166.7	169.5	169.5	-	-	-	-
August	763.3	725.2	-	-	-	-	138.0	109.0	-	-
September	913.0	689.8	-	-	54.5	21.0	-	-	63.0	38.0
October	72.8	54.0	-	-	41.5	28.0	179.7	95.5	113.8	105.0
November	702.4	668.0	-	-	-	-	-	-	91.5	84.5
December	-	-	-	-	63.3	43.0	178.7	150.0	-	-
January	-	-	-	-	-	-	-	-	343.0	305.1
February	173.3	129.1	122.9	122.6	-	-	59.0	20.9	-	-
March	103.0	69.0	-	-	121.0	95.1	-	-	786.8	641.5
April	53.0	35.0	351.2	303.1	116.9	61.9	-	-	165.9	123.3
May	72.0	54.2	160.3	137.8	120.5	83.6	-	-	-	-
June	330.3	289.1	59.3	46.5	66.8	44.3	51.6	40.0	-	-
Average										
per month	278.7	238.0	72.3	64.7	62.8	45.5	50.6	34.6	156.4	129.7
per day	9.3	7.9	2.4	2.2	2.1	1.5	1.7	1.2	5.2	4.3

PURCHASE

PERIODS	2013-14		2014-15		2015-16		2016-17		2017-18	
	Amount		Amount		Amount		Amount		Amount	
	Offered	Offered	Offered	Injected	Offered	Injected	Offered	Injected	Offered	Injected
July	694.8	631.3	380.6	342.7	4,335.1	4,200.5	6,965.6	6,655.1	6,181.3	5,797.7
August	-	-	220.6	183.3	4,637.3	4,553.5	3,951.0	3,873.5	6,066.4	5,940.3
September	-	-	506.2	414.7	6,602.8	5,818.4	6,206.9	5,870.9	7,881.6	7,733.5
October	189.5	136.3	633.8	603.8	7,058.8	6,668.1	4,024.4	3,960.4	6,245.0	5,968.4
November	234.3	121.5	1,183.6	1,161.1	5,432.5	5,318.9	3,242.3	3,096.9	6,454.0	6,252.5
December	397.6	241.1	2,198.8	2,147.7	6,465.0	6,121.8	4,551.0	4,234.6	8,943.3	8,590.5
January	459.5	263.0	3,058.2	3,007.4	4,863.4	4,598.6	4,099.7	3,878.5	4,612.4	4,390.3
February	359.10	348.10	2,915.7	2,850.7	5,585.2	5,253.8	4,127.9	3,953.7	5,946.7	5,522.7
March	860.6	520.1	4,484.6	4,290.6	7,165.9	6,908.0	5,537.5	5,373.8	4,140.8	3,906.9
April	1,152.0	1,033.7	4,249.7	4,053.6	6,258.7	6,108.9	5,270.7	5,195.4	3,523.0	3,105.1
May	1,641.7	1,431.5	3,509.4	3,462.4	5,158.8	5,105.8	5,374.6	5,278.7	-	-
June	212.7	199.4	2,515.9	2,506.9	7,564.2	6,943.7	7,385.0	7,049.8	-	-
Average										
per month	516.8	410.5	2,154.7	2,085.4	5,927.3	5,633.3	5,061.4	4,868.4	5,999.4	5,720.8
per day	17.2	13.7	71.8	69.5	197.6	187.8	168.7	162.3	200.0	190.7

Source: Domestic Markets & Monetary Management Department, SBP

6.3 SBP Overnight Repo/ Reverse Repo Facilities

Cash Accommodation

(Million Rupees)

PERIODS	2013-14		2014-15		2015-16		2016-17		2017-18	
	SBP Overnight Reverse Repo (Ceiling)	SBP Overnight Repo (Floor)	SBP Overnight Reverse Repo (Ceiling)	SBP Overnight Repo (Floor)	SBP Overnight Reverse Repo (Ceiling)	SBP Overnight Repo (Floor)	SBP Overnight Reverse Repo (Ceiling)	SBP Overnight Repo (Floor)	SBP Overnight Reverse Repo (Ceiling)	SBP Overnight Repo (Floor)
July	171,300	45,400	190,400	48,150	244,850	6,400	164,950	6,650	7,800	-
August	31,550	54,500	137,950	45,000	137,300	1,000	269,000	5,200	37,200	-
September	47,700	319,100	362,450	70,300	540,000	81,850	70,500	-	40,800	3,500
October	327,700	22,000	244,650	314,950	204,100	7,700	28,100	6,000	67,000	13,500
November	228,250	177,800	343,700	-	76,600	2,000	800	25,650	45,900	-
December	421,950	-	582,050	54,400	298,100	61,650	36,650	11,700	150,400	38,500
January	389,100	34,000	314,550	7,250	121,600	-	110,100	-	-	12,400
February	307,000	203,800	74,450	63,250	96,200	18,350	11,600	33,900	12,400	-
March	863,000	2,100	142,500	-	288,600	92,400	39,100	22,800	47,000	47,800
April	423,050	8,000	139,650	87,250	77,900	-	45,000	61,800	95,000	-
May	791,000	80,350	43,750	-	44,000	4,000	25,000	173,000	-	-
June	83,150	137,200	118,850	38,900	625,500	255,000	134,850	18,650	-	-
Average										
per month	340,396	90,354	224,579	60,788	229,563	44,196	77,971	30,446	50,350	11,570
per day	11,347	3,012	7,486	2,026	7,652	1,473	2,599	1,015	1,678	386

SBP Overnight Repo/ Reverse Repo Rates

(Percent per annum)

PERIODS	2013-14		2014-15		2015-16		2016-17		2017-18	
	SBP Reverse Repo Rate ¹ (Ceiling)	SBP Repo Rate ² (Floor)	SBP Reverse Repo Rate ¹ (Ceiling)	SBP Repo Rate ² (Floor)	SBP Reverse Repo Rate ¹ (Ceiling)	SBP Repo Rate ² (Floor)	SBP Reverse Repo Rate ¹ (Ceiling)	SBP Repo Rate ² (Floor)	SBP Reverse Repo Rate ¹ (Ceiling)	SBP Repo Rate ² (Floor)
July	9.0	6.5	10.0	7.5	7.00	5.00	6.25	4.25	6.25	4.25
August	9.0	6.5	10.0	7.5	7.00	5.00	6.25	4.25	6.25	4.25
September	9.5	7.0	10.0	7.5	6.50	4.50	6.25	4.25	6.25	4.25
October	9.5	7.0	10.0	7.5	6.50	4.50	6.25	4.25	6.25	4.25
November	10.0	7.5	9.5	7.0	6.50	4.50	6.25	4.25	6.25	4.25
December	10.0	7.5	9.5	7.0	6.50	4.50	6.25	4.25	6.25	4.25
January	10.0	7.5	8.5	6.0	6.50	4.50	6.25	4.25	6.50	4.50
February	10.0	7.5	8.5	6.0	6.50	4.50	6.25	4.25	6.50	4.50
March	10.0	7.5	8.0	5.5	6.50	4.50	6.25	4.25	6.50	4.50
April	10.0	7.5	8.0	5.5	6.50	4.50	6.25	4.25	6.50	4.50
May	10.0	7.5	7.0	5.0	6.25	4.25	6.25	4.25	-	-
June	10.0	7.5	7.0	5.0	6.25	4.25	6.25	4.25	-	-

Source: Domestic Markets & Monetary Management Department, SBP

NOTE:1. SBP 3-day repo rate was renamed as SBP reverse repo rate w.e.f. August 17, 2009. SBP reverse repo rate (also known as policy rate or discount rate) is the rate at which banks borrow from SBP on an overnight basis.

2.SBP Repo rate (introduced w.e.f. August 17, 2009) is the rate at which banks deposit their end-of-day excess cash with SBP on an overnight basis.

6.4 Auction of Government of Pakistan Market Treasury Bills

(Million Rupees)

AUCTION SETTLEMENT DATE	3 Months Treasury Bills				6 Months Treasury Bills				12 Months Treasury Bills			
	Amount Offered	Amount Accepted	Cut-off Yield (%)	Weighted Average (%)	Amount Offered	Amount Accepted	Cut-off Yield (%)	Weighted Average (%)	Amount Offered	Amount Accepted	Cut-off Yield (%)	Weighted Average (%)
2017												
13-Apr-17	284,838	270,838	5.991	5.9753	68,238	BR	BR	BR	2,825	BR	BR	BR
27-Apr-17	287,575	285,475	5.991	5.9851	99,660	89,660	6.0109	6.0082	36,819	7,819	6.027	5.9992
11-May-17	300,376	275,526	5.991	5.991	126,951	99,451	6.0109	6.0109	7,050	3,550	6.0273	6.0273
25-May-17	274,080	259,480	5.991	5.991	111,446	84,946	6.0109	6.0109	23,252	3,252	6.0499	6.0499
8-Jun-17	73,932	28,932	5.991	5.9904	193,368	133,368	6.0109	6.0109	5,438	2,938	6.0499	6.0499
22-Jun-17	309,953	262,953	5.991	5.991	113,789	95,289	6.0109	6.0109	5,056	3,056	6.0386	6.0386
6-Jul-17	462,988	417,238	5.991	5.991	156,013	127,013	6.0109	6.0109	17,666	10,666	6.0386	6.0386
20-Jul-17	761,148	753,148	5.991	5.9909	332,314	331,814	6.0109	6.0109	16,814	15,857	6.0386	6.0381
03-Aug-17	605,111	588,411	5.9910	5.9902	142,958	138,708	6.0109	6.0093	25,887	19,637	5.9910	6.0109
17-Aug-17	539,264	515,264	5.9910	5.9910	122,519	110,769	6.0109	6.0109	1,326	BR	5.9910	6.0109
31-Aug-17	447,978	441,478	5.9910	5.9910	93,972	86,972	6.0109	6.0109	2,697	697	5.9910	6.0109
14-Sep-17	358,166	351,466	5.9910	5.9910	24,296	19,796	6.0109	6.0109	6,271	6,271	5.9910	6.0109
28-Sep-17	402,636	396,136	5.9910	5.9910	100,390	80,390	6.0109	6.0109	3,853	3,853	5.9910	6.0109
12-Oct-17	842,848	806,848	5.9910	5.9910	6,266	6,266	6.0109	6.0109	NBR	NBR	NBR	NBR
26-Oct-17	941,746	711,290	5.9910	5.9910	29,602	29,602	6.0109	6.0109	NBR	NBR	NBR	NBR
09-Nov-17	935,032	628,474	5.9910	5.9910	82,106	82,106	6.0109	6.0109	NBR	NBR	NBR	NBR
23-Nov-17	788,797	520,223	5.9910	5.9909	104,567	104,567	6.0109	6.0109	NBR	NBR	NBR	NBR
07-Dec-17	532,245	530,745	5.9910	5.9910	85,290	80,290	6.0109	6.0109	5,000	BR	BR	BR
21-Dec-17	202,532	100,782	5.9910	5.9910	NBR	NBR	NBR	NBR	NBR	NBR	NBR	NBR
2018												
04-Jan-18	580,227	495,777	5.9910	5.9910	NBR	NBR	NBR	NBR	NBR	NBR	NBR	NBR
18-Jan-18	1,137,932	1,084,932	5.9910	5.9910	NBR	NBR	NBR	NBR	NBR	NBR	NBR	NBR
01-Feb-18	1,879,616	1,170,046	6.2144	6.2018	NBR	NBR	NBR	NBR	NBR	NBR	NBR	NBR
15-Feb-18	1,249,939	1,101,364	6.2144	6.2143	50,629	BR	BR	BR	NBR	NBR	NBR	NBR
01-Mar-18	308,831	288,331	6.2591	6.2322	26,197	BR	BR	BR	NBR	NBR	NBR	NBR
15-Mar-18	103,609	54,109	6.2591	6.2589	5,310	BR	BR	BR	5,250	BR	BR	BR
29-Mar-18	155,502	20,152	6.2591	6.2591	NBR	NBR	NBR	NBR	NBR	NBR	NBR	NBR
12-Apr-18	2,774,242	1,918,226	6.2399	6.3519	125,832	5,832	6.3519	6.3519	NBR	NBR	NBR	NBR
26-Apr-18	1,577,412	1,438,062	6.2591	6.3519	86,160	61,160	6.3519	6.3496	NBR	NBR	NBR	NBR

Source: Domestic Markets & Monetary Management Department, SBP

BR = Bids Rejected
NBR = No Bids Received

6.5 Auction of Pakistan Investment Bonds (PIBs)

(Million Rupees)							
AUCTION SETTLEMENT DATE	Tenure	Coupon Rate (%)	Amount Offered	Amount Accepted	Price Accepted = Rs.100	Cut-off Yield Accepted (%)	Weighted Yield Average Accepted (%)
15-Jun-17	3-Years	7.00	73,961.50	68,322.90	101.37	6.4050	6.4043
	5-Years	7.75	7,200.00	3,500.00	103.27	6.8974	6.8952
	10-Years	8.75	8,910.00	3,210.00	105.37	7.9358	7.9356
	20-Years	10.75	NBR	-	-	-	-
27-Jul-17	3-Years	7.00	34,891.00	23,376.00	101.30	6.4091	6.4029
	5-Years	7.75	15,075.00	10,150.00	103.20	6.8961	6.8960
	10-Years	8.75	23,190.00	22,095.00	105.32	7.9360	7.9359
	20-Years	10.75	NBR	-	-	-	-
24-Aug-17	3-Years	7.00	19,835.00	-	-	-	-
	5-Years	7.75	2,500.00	-	-	-	-
	10-Years	8.75	3,009.00	-	-	-	-
	20-Years	10.75	NBR	-	-	-	-
21-Sep-17	3-Years	7.00	2,825.00	-	-	-	-
	5-Years	7.75	750.00	-	-	-	-
	10-Years	8.75	2,042.40	-	-	-	-
	20-Years	10.75	NBR	-	-	-	-
19-Oct-17	3-Years	7.00	21,600.00	-	-	-	-
	5-Years	7.75	1,500.00	-	-	-	-
	10-Years	8.75	1,524.00	-	-	-	-
	20-Years	10.75	NBR	-	-	-	-
16-Nov-17	3-Years	7.00	18,900.00	-	-	-	-
	5-Years	7.75	2,000.00	-	-	-	-
	10-Years	8.75	2,624.00	-	-	-	-
	20-Years	10.75	-	-	-	-	-
14-Dec-17	3-Years	7.00	3,500.00	-	-	-	-
	5-Years	7.75	500.00	-	-	-	-
	10-Years	8.75	2,124.00	-	-	-	-
	20-Years	10.75	-	-	-	-	-
25-Jan-18	3-Years	7.00	31,850.00	-	-	-	-
	5-Years	7.75	-	-	-	-	-
	10-Years	8.75	1,436.60	-	-	-	-
	20-Years	10.75	-	-	-	-	-
22-Mar-18	3-Years	7.00	8,750.00	-	-	-	-
	5-Years	7.75	1,000.00	-	-	-	-
	10-Years	8.75	100.00	-	-	-	-
	20-Years	10.75	-	-	-	-	-
19-Apr-18	3-Years	7.00	47,800.00	7,616.30	99.6716	7.1999	7.1621
	5-Years	7.75	14,450.00	2,358.00	99.1000	8.0305	8.0305
	10-Years	8.75	25,460.00	25,460.00	101.4933	8.5000	8.5000
	20-Years	10.75	-	-	-	-	-

NBR= No Bids Received

Source: Domestic Markets & Monetary Management Department, SBP

6.6 KIBOR

(Percent per annum)

PERIODS	1 Week		2 Weeks		1Month		3 Months		6 Months		9 Months		12 Months			
	Bid	Offer	Bid	Offer	Bid	Offer	Bid	Offer	Bid	Offer	Bid	Offer	Bid	Offer		
	2017	Mar	Month Average	5.73	6.23	5.75	6.25	5.76	6.26	5.83	6.08	5.88	6.13	5.90	6.40	5.91
		End-Month	5.76	6.26	5.76	6.26	5.77	6.27	5.87	6.12	5.91	6.16	5.92	6.42	5.94	6.44
	Apr	Month Average	5.75	6.25	5.76	6.26	5.77	6.27	5.89	6.14	5.91	6.16	5.94	6.44	5.97	6.47
		End-Month	5.76	6.26	5.77	6.27	5.79	6.29	5.89	6.14	5.92	6.17	5.94	6.44	5.97	6.47
	May	Month Average	5.73	6.23	5.75	6.25	5.77	6.27	5.88	6.13	5.90	6.15	5.93	6.43	5.95	6.45
		End-Month	5.74	6.24	5.75	6.25	5.77	6.27	5.89	6.14	5.91	6.16	5.92	6.42	5.94	6.44
	Jun	Month Average	5.73	6.23	5.75	6.25	5.77	6.27	5.89	6.14	5.90	6.15	5.94	6.44	5.96	6.46
		End-Month	5.73	6.23	5.75	6.25	5.76	6.26	5.89	6.14	5.90	6.15	5.94	6.44	5.96	6.46
	Jul	Month Average	5.71	6.21	5.75	6.25	5.77	6.27	5.89	6.14	5.89	6.14	5.94	6.44	5.96	6.46
		End-Month	5.71	6.21	5.75	6.25	5.78	6.28	5.89	6.14	5.90	6.15	5.94	6.44	5.96	6.46
	Aug	Month Average	5.70	6.20	5.73	6.23	5.76	6.26	5.89	6.14	5.90	6.15	5.94	6.44	5.96	6.46
		End-Month	5.68	6.18	5.72	6.22	5.76	6.26	5.89	6.14	5.90	6.15	5.94	6.44	5.96	6.46
	Sep	Month Average	5.70	6.20	5.73	6.23	5.76	6.26	5.90	6.15	5.91	6.16	5.95	6.45	5.97	6.47
		End-Month	5.70	6.20	5.74	6.24	5.76	6.26	5.90	6.15	5.91	6.16	5.95	6.45	5.97	6.47
	Oct	Month Average	5.70	6.20	5.73	6.23	5.76	6.26	5.90	6.15	5.92	6.17	5.96	6.46	5.97	6.47
		End-Month	5.73	6.23	5.75	6.25	5.77	6.27	5.89	6.14	5.92	6.17	5.95	6.45	5.96	6.46
	Nov	Month Average	5.71	6.21	5.74	6.24	5.77	6.27	5.90	6.15	5.93	6.18	5.96	6.46	5.97	6.47
		End-Month	5.71	6.21	5.75	6.25	5.76	6.26	5.91	6.16	5.94	6.19	5.96	6.46	5.98	6.48
	Dec	Month Average	5.73	6.23	5.76	6.26	5.79	6.29	5.92	6.17	5.96	6.21	5.98	6.48	5.99	6.49
		End-Month	5.76	6.26	5.78	6.28	5.81	6.31	5.91	6.16	5.96	6.21	5.99	6.49	6.00	6.50
2018	Jan	Month Average	5.73	6.23	5.78	6.28	5.81	6.31	5.94	6.19	5.98	6.23	6.01	6.51	6.03	6.53
		End-Month	5.91	6.41	5.95	6.45	5.98	6.48	6.12	6.37	6.18	6.43	6.20	6.70	6.24	6.74
	Feb	Month Average	5.92	6.42	5.96	6.46	5.99	6.49	6.11	6.36	6.19	6.44	6.21	6.71	6.24	6.74
		End-Month	5.92	6.42	5.96	6.46	6.00	6.50	6.13	6.38	6.21	6.46	6.22	6.72	6.26	6.76
	Mar	Month Average	5.93	6.43	5.98	6.48	6.02	6.52	6.18	6.43	6.26	6.51	6.29	6.79	6.37	6.87
		End-Month	5.93	6.43	5.99	6.49	6.03	6.53	6.25	6.50	6.36	6.61	6.38	6.88	6.44	6.94
	Apr	Month Average	5.90	6.40	5.94	6.44	5.98	6.48	6.16	6.41	6.25	6.50	6.30	6.80	6.41	6.91
		End-Month	5.92	6.42	5.96	6.46	5.99	6.49	6.15	6.40	6.26	6.51	6.32	6.82	6.44	6.94

KIBOR :Karachi Interbank Offered Rate

Source: Reuters

Archive Link: http://www.sbp.org.pk/ecodata/kibor_index.asp

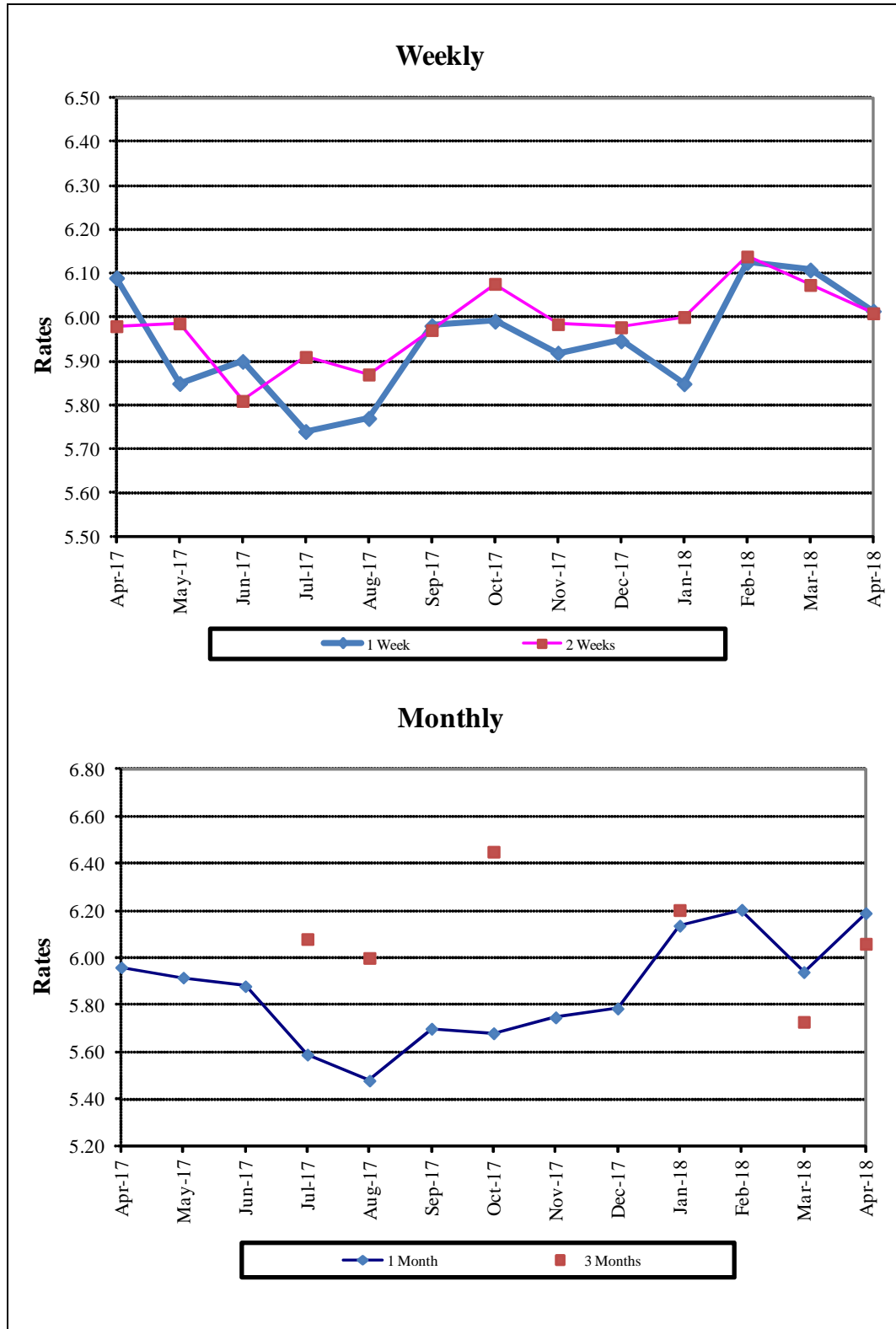
6.7 Inter-Bank Weighted Average Call Rates

		(Per Annum)					
PERIODS		Overnight	1 Week	2 Weeks	1 Month	3 Months	6 Months
2017	Mar	5.90	5.99	5.93	5.79	6.60	5.77
	Apr	5.87	6.09	5.98	5.96	-	-
	May	5.78	5.85	5.99	5.92	-	6.35
	Jun	5.79	5.90	5.81	5.88	-	-
	Jul	5.77	5.74	5.91	5.59	6.08	-
	Aug	5.76	5.77	5.87	5.48	6.00	5.80
	Sep	5.84	5.98	5.97	5.70	-	5.81
	Oct	5.82	5.99	6.08	5.68	6.45	5.81
	Nov	5.77	5.92	5.98	5.75	-	-
	Dec	5.95	5.95	5.98	5.79	-	-
2018	Jan	5.73	5.85	6.00	6.14	6.20	-
	Feb	6.01	6.12	6.14	6.20	-	-
	Mar	6.03	6.11	6.07	5.94	5.73	6.17
	Apr	6.09	6.01	6.01	6.19	6.06	6.16

Source: Domestic Markets & Monetary Management Department, SBP

Note: Weighted Average Call Rates of all the call deals executed during the month.

Inter- Bank Weighted Average Call Rates



6.8 SBP Mark to Market Rates Major Currencies

Date	US Dollar			Euro			Japanese Yen			UK Pound Sterling		
	Ready	1Week	1 Month	Ready	1Week	1 Month	Ready	1Week	1 Month	Ready	1Week	1 Month
2-Apr-18	115.5060	115.5376	115.5977	142.4305	142.5386	142.8482	1.0868	1.0876	1.0899	162.4362	162.5276	162.7727
3-Apr-18	115.5950	115.6132	115.6700	142.2744	142.3656	142.6882	1.0897	1.0903	1.0926	162.7116	162.7863	163.0471
4-Apr-18	115.6125	115.6297	115.6792	142.0877	142.1804	142.4899	1.0893	1.0899	1.0921	162.4991	162.5758	162.8265
5-Apr-18	115.6073	115.6339	115.6922	141.9600	142.0616	142.3732	1.0800	1.0807	1.0829	162.5901	162.6803	162.9312
6-Apr-18	115.5933	115.6224	115.6805	141.5324	141.6367	141.9436	1.0769	1.0777	1.0798	161.9693	162.0588	162.3049
9-Apr-18	115.6126	115.6295	115.6885	141.9780	142.0659	142.3701	1.0797	1.0803	1.0824	163.1120	163.1825	163.4243
10-Apr-18	115.6108	115.6303	115.6831	142.4903	142.5796	142.8970	1.0805	1.0812	1.0833	163.8609	163.9346	164.1798
11-Apr-18	115.6116	115.6314	115.6834	143.0231	143.1136	143.4197	1.0807	1.0813	1.0834	164.1222	164.1974	164.4366
12-Apr-18	115.6119	115.6268	115.6740	142.6246	142.7104	143.0060	1.0810	1.0816	1.0836	163.6082	163.6775	163.9088
13-Apr-18	115.6121	115.6455	115.6974	142.5555	142.6650	142.9687	1.0746	1.0753	1.0774	165.0883	165.1856	165.4233
16-Apr-18	115.6147	115.6427	115.7042	142.9287	143.0306	143.3452	1.0786	1.0794	1.0815	165.1035	165.1922	165.4442
17-Apr-18	115.6149	115.6453	115.7028	143.1775	143.2799	143.6057	1.0801	1.0808	1.0830	165.6935	165.7829	166.0344
18-Apr-18	115.6163	115.6436	115.7025	142.9654	143.0631	143.3783	1.0778	1.0784	1.0806	163.9497	164.0338	164.2784
19-Apr-18	115.6159	115.6415	115.7072	142.9532	143.0490	143.3646	1.0767	1.0775	1.0795	163.9838	164.0653	164.3120
20-Apr-18	115.6177	115.6479	115.7115	142.2445	142.3601	142.6580	1.0742	1.0749	1.0770	162.4024	162.4915	162.7338
23-Apr-18	115.6185	115.6457	115.7107	141.4303	141.5341	141.8452	1.0697	1.0704	1.0726	161.5710	161.6597	161.9071
24-Apr-18	115.6177	115.6642	115.7271	141.0767	141.2022	141.5398	1.0623	1.0635	1.0655	161.2405	161.3539	161.6186
25-Apr-18	115.6176	115.6634	115.7300	141.1517	141.2748	141.6051	1.0600	1.0610	1.0632	161.4021	161.5131	161.7737
26-Apr-18	115.6187	115.6673	115.7475	140.7137	140.8396	141.1774	1.0570	1.0579	1.0602	160.8371	160.9585	161.2251
27-Apr-18	115.6163	115.6779	115.7648	139.6934	139.8353	140.2013	1.0578	1.0589	1.0614	159.7354	159.8685	160.1550
30-Apr-18	115.6168	115.6732	115.7650	139.9079	140.0434	140.4063	1.0578	1.0588	1.0614	158.7996	158.9240	159.2302

Source: Domestic Markets & Monetary Management Department, SBP

6.8 SBP Mark to Market Rates Major Currencies

Date	Swiss Frank			Australian Dollar			Saudi Arabian Riyal			Kuwaiti Dinar		
	Ready	1Week	1 Month	Ready	1Week	1 Month	Ready	1Week	1 Month	Ready	1Week	1 Month
2-Apr-18	121.1835	121.2830	121.5778	88.7260	88.7482	88.7972	30.8008	30.8101	30.8263	385.4120	385.5558	385.8272
3-Apr-18	121.0609	121.1477	121.4537	88.8752	88.8847	88.9306	30.8233	30.8292	30.8426	385.5803	385.6924	385.9395
4-Apr-18	120.6874	120.7762	121.0690	88.7152	88.7270	88.7667	30.8279	30.8338	30.8490	385.4585	385.5671	385.8096
5-Apr-18	120.3741	120.4706	120.7584	88.8326	88.8526	88.9015	30.8257	30.8343	30.8517	385.2292	385.3819	385.7372
6-Apr-18	120.1156	120.2131	120.5093	88.8797	88.8999	88.9478	30.8220	30.8306	30.8481	385.0479	385.2076	385.5630
9-Apr-18	120.5114	120.5958	120.8814	88.6806	88.6946	88.7438	30.8280	30.8339	30.8515	385.3304	385.4505	385.8382
10-Apr-18	120.9697	121.0559	121.3540	89.2862	89.3024	89.3486	30.8275	30.8341	30.8501	385.5042	385.6335	386.0029
11-Apr-18	120.7054	120.7910	121.0787	89.6337	89.6495	89.6941	30.8277	30.8344	30.8489	385.5841	385.7143	386.0813
12-Apr-18	120.1475	120.2280	120.5044	89.5067	89.5192	89.5597	30.8278	30.8332	30.8464	385.4566	385.5732	385.9239
13-Apr-18	120.2164	120.3166	120.6012	90.1139	90.1394	90.1812	30.8283	30.8380	30.8543	385.4316	385.6187	386.0376
16-Apr-18	120.3818	120.4764	120.7669	89.8557	89.8746	89.9226	30.8285	30.8374	30.8545	385.5430	385.7133	386.1863
17-Apr-18	120.2193	120.3146	120.6265	89.9889	90.0109	90.0563	30.8286	30.8381	30.8549	385.6080	385.7857	386.2554
18-Apr-18	119.4199	119.5103	119.8107	89.6489	89.6684	89.7140	30.8290	30.8377	30.8548	385.4071	385.5746	386.0452
19-Apr-18	119.3454	119.4346	119.7245	90.1226	90.1422	90.1944	30.8288	30.8371	30.8561	385.5083	385.6734	386.1632
20-Apr-18	118.7528	118.8593	119.1331	88.9274	88.9504	89.0014	30.8293	30.8382	30.8576	385.1677	385.3510	385.8332
23-Apr-18	118.2979	118.3949	118.6802	88.3094	88.3313	88.3839	30.8295	30.8382	30.8570	384.8753	385.0430	385.5353
24-Apr-18	118.2185	118.3342	118.6462	87.9735	88.0104	88.0634	30.8293	30.8421	30.8614	384.6040	384.8348	385.3184
25-Apr-18	117.8208	117.9335	118.2376	87.6555	87.6911	87.7462	30.8293	30.8427	30.8621	384.5779	384.8066	385.3017
26-Apr-18	117.4986	117.6134	117.9238	87.4193	87.4565	87.5201	30.8296	30.8440	30.8668	384.4792	384.7175	385.2671
27-Apr-18	116.7546	116.8818	117.2186	87.3654	87.4119	87.4800	30.8294	30.8462	30.8702	384.0881	384.3714	384.9331
30-Apr-18	116.8436	116.9764	117.3028	87.3080	87.3510	87.4243	30.8291	30.8455	30.8715	384.1281	384.3921	384.9401

Source: Domestic Markets & Monetary Management Department, SBP

Archive Link: <http://www.sbp.org.pk/ecodata/rates/m2m/M2M-History.asp>

6.9 Secondary Market Transactions in Government Securities

(Billion Rupees)

SECURITIES / TRANSACTIONS	2017									2018				
	Apr	May	Jun	Jul	Aug	Sep	Oct	Nov	Dec	Jan	Feb	Mar	Apr	
PIBs														
Purchases	5,354.8	3,067.1	3,413.3	2,427.3	2,166.5	2,712.5	2,328.0	2,445.2	3,311.9	2,223.4	2,050.2	1,777.2	1,149.8	
Non Banks	Repo	1.8	4.1	3.1	7.5	4.6	10.1	4.8	3.7	5.1	5.2	3.1	5.3	21.8
	outright	43.3	32.3	16.3	74.7	28.4	51.0	45.5	45.6	25.8	65.9	40.9	31.2	102.5
Banks/PDs	Repo	120.2	204.6	116.9	139.3	123.6	77.8	109.4	68.0	105.2	156.9	56.3	199.3	391.5
	outright	507.5	207.9	170.2	299.1	100.9	174.7	165.1	158.5	183.0	334.2	192.9	145.9	203.1
SBP	Repo	4,682.1	2,618.2	3,106.7	1,906.7	1,909.0	2,398.9	2,003.3	2,169.4	2,992.7	1,661.3	1,756.9	1,395.6	431.0
Sales		5,354.8	3,067.1	3,413.3	2,427.3	2,166.5	2,712.5	2,328.0	2,445.2	3,311.9	2,223.4	2,050.2	1,777.2	1,149.8
Non Banks	Repo	84.8	101.9	33.8	26.2	22.7	15.1	25.1	12.3	8.1	1.2	5.4	17.3	15.0
	outright	98.7	60.5	35.6	30.6	14.7	50.5	34.4	43.6	41.5	24.8	35.9	38.5	49.1
Banks/PDs	Repo	4,719.3	2,725.0	3,192.9	2,027.3	2,014.4	2,471.7	2,092.4	2,228.8	3,095.0	1,822.2	1,810.9	1,582.9	829.3
	outright	452.0	179.7	150.9	343.2	114.6	175.2	176.2	160.5	167.3	375.2	198.0	138.6	256.4
SBP	Repo	-	-	-	-	-	-	-	-	-	-	-	-	-
Net Position		-	-	-	-	-	-	-	-	-	-	-	-	-
Treasury Bills														
Purchases		4,743.2	5,886.5	6,829.6	6,704.7	8,074.0	8,904.6	8,399.2	8,545.7	9,585.7	7,208.3	7,387.9	7,302.8	7,833.9
Non Banks	Repo	24.5	82.8	84.5	50.9	59.4	64.2	68.6	85.0	68.1	65.5	98.9	101.4	135.4
	outright	52.0	188.7	114.4	287.4	278.5	138.6	361.3	254.3	206.5	375.7	410.6	306.7	612.2
Banks/PDs	Repo	1,490.4	1,869.6	1,870.2	1,418.9	1,695.8	1,646.3	1,793.4	1,958.4	2,003.0	2,257.4	1,737.1	3,141.0	2,145.7
	outright	289.2	1,060.0	682.6	1,048.6	1,973.7	1,680.1	2,143.8	2,119.1	1,559.9	1,780.7	1,363.2	1,195.5	2,171.6
SBP	Repo	2,887.1	2,685.5	4,077.9	3,898.8	4,066.7	5,375.4	4,032.1	4,129.0	5,748.2	2,729.0	3,778.2	2,558.3	2,769.1
Sales		4,743.2	5,886.5	6,829.6	6,704.7	8,074.0	8,904.6	8,399.2	8,545.7	9,585.7	7,208.3	7,387.9	7,302.8	7,833.9
Non Banks	Repo	72.6	153.0	68.0	128.6	117.1	76.5	80.7	94.1	108.1	76.0	97.5	134.5	145.4
	outright	58.2	118.6	153.0	75.6	140.5	150.3	126.8	164.8	215.2	164.4	194.3	292.0	251.5
Banks/PDs	Repo	4,017.4	4,311.8	5,906.0	5,240.0	5,704.8	6,967.8	5,695.0	5,993.8	7,464.6	4,658.3	5,516.6	4,977.2	4,781.4
	outright	283.0	1,130.1	644.0	1,260.4	2,111.6	1,668.4	2,378.3	2,208.6	1,551.3	1,992.1	1,579.4	1,210.1	2,532.3
SBP	Repo	312.1	173.0	58.7	-	-	41.5	118.5	84.5	246.5	317.5	-	689.0	123.3
Net Position		-	-	-	-	-	-	-	-	-	-	-	-	-

PDs: Primary Dealers

Source: Domestic Markets & Monetary Management Department, SBP

Note: Month-wise volume of repo/outright transactions during the month.