

6.1 Government of Pakistan Treasury Bills

Million Rupees

	Jun-16	Jun-17	2017		2018				
			Apr	May	Jan	Feb	Mar	Apr	May
			3 Months Treasury Bills						
Issue	40,900	287,915	548,760	527,730	1,559,211.4	2,239,416	357,461	3,308,876	503,032
Discount Allowed	557	3,970	7,553	7,276	21,498.6	31,994	5,131	47,412	7,242
Discharged	21,042	238,038	452,820	482,280	1,497,491.0	1,133,074	1,111,973	2,223,758	1,370,089
Discount Paid	298	3,263	6,156	6,597	20,647.7	15,622	15,331	31,220	19,606
Outstanding Balance	242,875	1,364,406	1,269,079	1,314,529	3,315,224.6	4,421,566	3,667,054	4,752,172	3,885,115
6 Months Treasury Bills									
Issue	161,549	222,003	87,052	179,031	-	-	-	64,936	3,274
Discount Allowed	4,697	6,654	2,608	5,366	-	-	-	2,056	104
Discharged	41,672	47,523	28,700	134,673	445,476.6	242,218	181,711	34,823	181,241
Discount Paid	1,312	1,417	845	3,988	13,352.9	7,259	5,446	1,044	5,432
Outstanding Balance	816,883	1,838,876	1,620,038	1,664,396	717,947.4	475,729	294,018	324,130	146,164
12 Months Treasury Bills									
Issue	129,848	5,654	7,377	6,416	-	-	-	-	-
Discount Allowed	7,711	341	441	386	-	-	-	-	-
Discharged	7,621	129,848	36,327	85,441	130,461.8	215,515	2,867	7,377	6,416
Discount Paid	520	7,711	2,249	5,152	7,732.8	12,849	171	441	386
Outstanding Balance	1,712,268	884,431	1,087,652	1,008,626	282,807.1	67,292	64,425	57,048	50,632

Source: Domestic Markets & Monetary Management Department SBP

Note: Six months Government of Pakistan Treasury Bills restarted w. e. f. June 1998 and 3 & 12 Months Government of Pakistan Treasury Bills restarted w.e.f July 1998.

6.2 Sale / Purchase of Treasury Bills under Open Market Operation by SBP with Banks

SALE

(Billion Rupees)

PERIODS	2013-14		2014-15		2015-16		2016-17		2017-18	
	Bid Amount		Bid Amount		Bid Amount		Bid Amount		Bid Amount	
	Offered	Accepted	Offered	Accepted	Offered	Accepted	Offered	Accepted	Offered	Accepted
July	161.5	142.4	173.7	166.7	169.5	169.5	-	-	-	-
August	763.3	725.2	-	-	-	-	138.0	109.0	-	-
September	913.0	689.8	-	-	54.5	21.0	-	-	63.0	38.0
October	72.8	54.0	-	-	41.5	28.0	179.7	95.5	113.8	105.0
November	702.4	668.0	-	-	-	-	-	-	91.5	84.5
December	-	-	-	-	63.3	43.0	178.7	150.0	-	-
January	-	-	-	-	-	-	-	-	343.0	305.1
February	173.3	129.1	122.9	122.6	-	-	59.0	20.9	-	-
March	103.0	69.0	-	-	121.0	95.1	-	-	786.8	641.5
April	53.0	35.0	351.2	303.1	116.9	61.9	-	-	165.9	123.3
May	72.0	54.2	160.3	137.8	120.5	83.6	-	-	136.5	100.0
June	330.3	289.1	59.3	46.5	66.8	44.3	51.6	40.0		
Average										
per month	278.7	238.0	72.3	64.7	62.8	45.5	50.6	34.6	154.6	127.0
per day	9.3	7.9	2.4	2.2	2.1	1.5	1.7	1.2	5.15	4.23

PURCHASE

PERIODS	2013-14		2014-15		2015-16		2016-17		2017-18	
	Amount		Amount		Amount		Amount		Amount	
	Offered	Offered	Offered	Injected	Offered	Injected	Offered	Injected	Offered	Injected
July	694.8	631.3	380.6	342.7	4,335.1	4,200.5	6,965.6	6,655.1	6,181.3	5,797.7
August	-	-	220.6	183.3	4,637.3	4,553.5	3,951.0	3,873.5	6,066.4	5,940.3
September	-	-	506.2	414.7	6,602.8	5,818.4	6,206.9	5,870.9	7,881.6	7,733.5
October	189.5	136.3	633.8	603.8	7,058.8	6,668.1	4,024.4	3,960.4	6,245.0	5,968.4
November	234.3	121.5	1,183.6	1,161.1	5,432.5	5,318.9	3,242.3	3,096.9	6,454.0	6,252.5
December	397.6	241.1	2,198.8	2,147.7	6,465.0	6,121.8	4,551.0	4,234.6	8,943.3	8,590.5
January	459.5	263.0	3,058.2	3,007.4	4,863.4	4,598.6	4,099.7	3,878.5	4,612.4	4,390.3
February	359.10	348.10	2,915.7	2,850.7	5,585.2	5,253.8	4,127.9	3,953.7	5,946.7	5,522.7
March	860.6	520.1	4,484.6	4,290.6	7,165.9	6,908.0	5,537.5	5,373.8	4,140.8	3,906.9
April	1,152.0	1,033.7	4,249.7	4,053.6	6,258.7	6,108.9	5,270.7	5,195.4	3,523.0	3,105.1
May	1,641.7	1,431.5	3,509.4	3,462.4	5,158.8	5,105.8	5,374.6	5,278.7	3,198.2	2,741.0
June	212.7	199.4	2,515.9	2,506.9	7,564.2	6,943.7	7,385.0	7,049.8		
Average										
per month	516.8	410.5	2,154.7	2,085.4	5,927.3	5,633.3	5,061.4	4,868.4	5,744.8	5,449.9
per day	17.2	13.7	71.8	69.5	197.6	187.8	168.7	162.3	191.5	181.7

Source: Domestic Markets & Monetary Management Department, SBP

6.3 SBP Overnight Repo/ Reverse Repo Facilities

Cash Accommodation

(Million Rupees)

PERIODS	2013-14		2014-15		2015-16		2016-17		2017-18	
	SBP Overnight Reverse Repo (Ceiling)	SBP Overnight Repo (Floor)	SBP Overnight Reverse Repo (Ceiling)	SBP Overnight Repo (Floor)	SBP Overnight Reverse Repo (Ceiling)	SBP Overnight Repo (Floor)	SBP Overnight Reverse Repo (Ceiling)	SBP Overnight Repo (Floor)	SBP Overnight Reverse Repo (Ceiling)	SBP Overnight Repo (Floor)
July	171,300	45,400	190,400	48,150	244,850	6,400	164,950	6,650	7,800	-
August	31,550	54,500	137,950	45,000	137,300	1,000	269,000	5,200	37,200	-
September	47,700	319,100	362,450	70,300	540,000	81,850	70,500	-	40,800	3,500
October	327,700	22,000	244,650	314,950	204,100	7,700	28,100	6,000	67,000	13,500
November	228,250	177,800	343,700	-	76,600	2,000	800	25,650	45,900	-
December	421,950	-	582,050	54,400	298,100	61,650	36,650	11,700	150,400	38,500
January	389,100	34,000	314,550	7,250	121,600	-	110,100	-	-	12,400
February	307,000	203,800	74,450	63,250	96,200	18,350	11,600	33,900	12,400	-
March	863,000	2,100	142,500	-	288,600	92,400	39,100	22,800	47,000	47,800
April	423,050	8,000	139,650	87,250	77,900	-	45,000	61,800	95,000	-
May	791,000	80,350	43,750	-	44,000	4,000	25,000	173,000	92,900	63,800
June	83,150	137,200	118,850	38,900	625,500	255,000	134,850	18,650		
Average										
per month	340,396	90,354	224,579	60,788	229,563	44,196	77,971	30,446	54,218	16,318
per day	11,347	3,012	7,486	2,026	7,652	1,473	2,599	1,015	1,807	544

SBP Overnight Repo/ Reverse Repo Rates

(Percent per annum)

PERIODS	2013-14		2014-15		2015-16		2016-17		2017-18	
	SBP Reverse Repo Rate ¹ (Ceiling)	SBP Repo Rate ² (Floor)	SBP Reverse Repo Rate ¹ (Ceiling)	SBP Repo Rate ² (Floor)	SBP Reverse Repo Rate ¹ (Ceiling)	SBP Repo Rate ² (Floor)	SBP Reverse Repo Rate ¹ (Ceiling)	SBP Repo Rate ² (Floor)	SBP Reverse Repo Rate ¹ (Ceiling)	SBP Repo Rate ² (Floor)
July	9.0	6.5	10.0	7.5	7.00	5.00	6.25	4.25	6.25	4.25
August	9.0	6.5	10.0	7.5	7.00	5.00	6.25	4.25	6.25	4.25
September	9.5	7.0	10.0	7.5	6.50	4.50	6.25	4.25	6.25	4.25
October	9.5	7.0	10.0	7.5	6.50	4.50	6.25	4.25	6.25	4.25
November	10.0	7.5	9.5	7.0	6.50	4.50	6.25	4.25	6.25	4.25
December	10.0	7.5	9.5	7.0	6.50	4.50	6.25	4.25	6.25	4.25
January	10.0	7.5	8.5	6.0	6.50	4.50	6.25	4.25	6.50	4.50
February	10.0	7.5	8.5	6.0	6.50	4.50	6.25	4.25	6.50	4.50
March	10.0	7.5	8.0	5.5	6.50	4.50	6.25	4.25	6.50	4.50
April	10.0	7.5	8.0	5.5	6.50	4.50	6.25	4.25	6.50	4.50
May	10.0	7.5	7.0	5.0	6.25	4.25	6.25	4.25	7.00	5.00
June	10.0	7.5	7.0	5.0	6.25	4.25	6.25	4.25		

Source: Domestic Markets & Monetary Management Department, SBP

NOTE:1. SBP 3-day repo rate was renamed as SBP reverse repo rate w.e.f. August 17, 2009. SBP reverse repo rate (also known as policy rate or discount rate) is the rate at which banks borrow from SBP on an overnight basis.

2.SBP Repo rate (introduced w.e.f. August 17, 2009) is the rate at which banks deposit their end-of-day excess cash with SBP on an overnight basis.

6.4 Auction of Government of Pakistan Market Treasury Bills

(Million Rupees)

AUCTION SETTLEMENT DATE	3 Months Treasury Bills				6 Months Treasury Bills				12 Months Treasury Bills			
	Amount Offered	Amount Accepted	Cut-off Yield (%)	Weighted Average (%)	Amount Offered	Amount Accepted	Cut-off Yield (%)	Weighted Average (%)	Amount Offered	Amount Accepted	Cut-off Yield (%)	Weighted Average (%)
2017												
11-May-17	300,376	275,526	5.991	5.991	126,951	99,451	6.0109	6.0109	7,050	3,550	6.0273	6.0273
25-May-17	274,080	259,480	5.991	5.991	111,446	84,946	6.0109	6.0109	23,252	3,252	6.0499	6.0499
8-Jun-17	73,932	28,932	5.991	5.9904	193,368	133,368	6.0109	6.0109	5,438	2,938	6.0499	6.0499
22-Jun-17	309,953	262,953	5.991	5.991	113,789	95,289	6.0109	6.0109	5,056	3,056	6.0386	6.0386
6-Jul-17	462,988	417,238	5.991	5.991	156,013	127,013	6.0109	6.0109	17,666	10,666	6.0386	6.0386
20-Jul-17	761,148	753,148	5.991	5.9909	332,314	331,814	6.0109	6.0109	16,814	15,857	6.0386	6.0381
03-Aug-17	605,111	588,411	5.9910	5.9902	142,958	138,708	6.0109	6.0093	25,887	19,637	5.9910	6.0109
17-Aug-17	539,264	515,264	5.9910	5.9910	122,519	110,769	6.0109	6.0109	1,326	BR	5.9910	6.0109
31-Aug-17	447,978	441,478	5.9910	5.9910	93,972	86,972	6.0109	6.0109	2,697	697	5.9910	6.0109
14-Sep-17	358,166	351,466	5.9910	5.9910	24,296	19,796	6.0109	6.0109	6,271	6,271	5.9910	6.0109
28-Sep-17	402,636	396,136	5.9910	5.9910	100,390	80,390	6.0109	6.0109	3,853	3,853	5.9910	6.0109
12-Oct-17	842,848	806,848	5.9910	5.9910	6,266	6,266	6.0109	6.0109	NBR	NBR	NBR	NBR
26-Oct-17	941,746	711,290	5.9910	5.9910	29,602	29,602	6.0109	6.0109	NBR	NBR	NBR	NBR
09-Nov-17	935,032	628,474	5.9910	5.9910	82,106	82,106	6.0109	6.0109	NBR	NBR	NBR	NBR
23-Nov-17	788,797	520,223	5.9910	5.9909	104,567	104,567	6.0109	6.0109	NBR	NBR	NBR	NBR
07-Dec-17	532,245	530,745	5.9910	5.9910	85,290	80,290	6.0109	6.0109	5,000	BR	BR	BR
21-Dec-17	202,532	100,782	5.9910	5.9910	NBR	NBR	NBR	NBR	NBR	NBR	NBR	NBR
2018												
04-Jan-18	580,227	495,777	5.9910	5.9910	NBR	NBR	NBR	NBR	NBR	NBR	NBR	NBR
18-Jan-18	1,137,932	1,084,932	5.9910	5.9910	NBR	NBR	NBR	NBR	NBR	NBR	NBR	NBR
01-Feb-18	1,879,616	1,170,046	6.2144	6.2018	NBR	NBR	NBR	NBR	NBR	NBR	NBR	NBR
15-Feb-18	1,249,939	1,101,364	6.2144	6.2143	50,629	BR	BR	BR	NBR	NBR	NBR	NBR
01-Mar-18	308,831	288,331	6.2591	6.2322	26,197	BR	BR	BR	NBR	NBR	NBR	NBR
15-Mar-18	103,609	54,109	6.2591	6.2589	5,310	BR	BR	BR	5,250	BR	BR	BR
29-Mar-18	155,502	20,152	6.2591	6.2591	NBR	NBR	NBR	NBR	NBR	NBR	NBR	NBR
12-Apr-18	2,774,242	1,918,226	6.2399	6.3519	125,832	5,832	6.3519	6.3519	NBR	NBR	NBR	NBR
26-Apr-18	1,577,412	1,438,062	6.2591	6.3519	86,160	61,160	6.3519	6.3496	NBR	NBR	NBR	NBR
10-May-18	574,685	498,115	6.2591	6.2556	26,378	3,378	6.3519	6.3519	NBR	NBR	NBR	NBR
24-May-18	13,686	12,159	6.2591	6.2585	NBR	NBR	NBR	NBR	NBR	NBR	NBR	NBR

Source: Domestic Markets & Monetary Management Department, SBP

BR = Bids Rejected
NBR= No Bids Received

6.5 Auction of Pakistan Investment Bonds (PIBs)

Fixed Rate

(Million Rupees)

AUCTION SETTLEMENT DATE	Tenure	Coupon Rate (%)	Amount Offered	Amount Accepted	Price Accepted = Rs.100	Cut-off Yield Accepted (%)	Weighted Yield Average Accepted (%)
24-Aug-17	3-Years	7.00	19,835.00	-	-	-	-
	5-Years	7.75	2,500.00	-	-	-	-
	10-Years	8.75	3,009.00	-	-	-	-
	20-Years	10.75	NBR	-	-	-	-
21-Sep-17	3-Years	7.00	2,825.00	-	-	-	-
	5-Years	7.75	750.00	-	-	-	-
	10-Years	8.75	2,042.40	-	-	-	-
	20-Years	10.75	NBR	-	-	-	-
19-Oct-17	3-Years	7.00	21,600.00	-	-	-	-
	5-Years	7.75	1,500.00	-	-	-	-
	10-Years	8.75	1,524.00	-	-	-	-
	20-Years	10.75	NBR	-	-	-	-
16-Nov-17	3-Years	7.00	18,900.00	-	-	-	-
	5-Years	7.75	2,000.00	-	-	-	-
	10-Years	8.75	2,624.00	-	-	-	-
	20-Years	10.75	-	-	-	-	-
14-Dec-17	3-Years	7.00	3,500.00	-	-	-	-
	5-Years	7.75	500.00	-	-	-	-
	10-Years	8.75	2,124.00	-	-	-	-
	20-Years	10.75	-	-	-	-	-
25-Jan-18	3-Years	7.00	31,850.00	-	-	-	-
	5-Years	7.75	-	-	-	-	-
	10-Years	8.75	1,436.60	-	-	-	-
	20-Years	10.75	-	-	-	-	-
22-Mar-18	3-Years	7.00	8,750.00	-	-	-	-
	5-Years	7.75	1,000.00	-	-	-	-
	10-Years	8.75	100.00	-	-	-	-
	20-Years	10.75	-	-	-	-	-
19-Apr-18	3-Years	7.00	47,800.00	7,616.30	99.6716	7.1999	7.1621
	5-Years	7.75	14,450.00	2,358.00	99.1000	8.0305	8.0305
	10-Years	8.75	25,460.00	25,460.00	101.4933	8.5000	8.5000
	20-Years	10.75	-	-	-	-	-
18-May-18	3-Years	7.00	23,150.00	4,248.00	99.69	7.2004	7.2003
	5-Years	7.75	3,804.00	1,884.00	99.12	8.0308	8.0308
	10-Years	8.75	733.00	733.00	101.55	8.4900	8.4738
	20-Years	10.75	-	-	-	-	-

Floating Rate

Face Value

SETTLEMENT DATE	Tenure	Amount Offered ¹	Amount Accepted ²	Cutoff Margin ³ (bps)
31-May-18	10-Years	174,055.50	27,976.50	50

NBR= No Bids Received

Source: Domestic Markets & Monetary Management Department, SBP

1-Amount offered only includes Competitive bids.

2-Amount accepted also includes Non-Competitive bids and Short selling. Securities will be issued at Face Value (Rs. 100)

3-This cut-off margin will be applicable to all accepted bids.

6.6 KIBOR

(Percent per annum)

PERIODS			1 Week		2 Weeks		1Month		3 Months		6 Months		9 Months		12 Months	
			Bid	Offer	Bid	Offer	Bid	Offer	Bid	Offer	Bid	Offer	Bid	Offer	Bid	Offer
2017	Apr	Month Average	5.75	6.25	5.76	6.26	5.77	6.27	5.89	6.14	5.91	6.16	5.94	6.44	5.97	6.47
		End-Month	5.76	6.26	5.77	6.27	5.79	6.29	5.89	6.14	5.92	6.17	5.94	6.44	5.97	6.47
	May	Month Average	5.73	6.23	5.75	6.25	5.77	6.27	5.88	6.13	5.90	6.15	5.93	6.43	5.95	6.45
		End-Month	5.74	6.24	5.75	6.25	5.77	6.27	5.89	6.14	5.91	6.16	5.92	6.42	5.94	6.44
	Jun	Month Average	5.73	6.23	5.75	6.25	5.77	6.27	5.89	6.14	5.90	6.15	5.94	6.44	5.96	6.46
		End-Month	5.73	6.23	5.75	6.25	5.76	6.26	5.89	6.14	5.90	6.15	5.94	6.44	5.96	6.46
	Jul	Month Average	5.71	6.21	5.75	6.25	5.77	6.27	5.89	6.14	5.89	6.14	5.94	6.44	5.96	6.46
		End-Month	5.71	6.21	5.75	6.25	5.78	6.28	5.89	6.14	5.90	6.15	5.94	6.44	5.96	6.46
	Aug	Month Average	5.70	6.20	5.73	6.23	5.76	6.26	5.89	6.14	5.90	6.15	5.94	6.44	5.96	6.46
		End-Month	5.68	6.18	5.72	6.22	5.76	6.26	5.89	6.14	5.90	6.15	5.94	6.44	5.96	6.46
	Sep	Month Average	5.70	6.20	5.73	6.23	5.76	6.26	5.90	6.15	5.91	6.16	5.95	6.45	5.97	6.47
		End-Month	5.70	6.20	5.74	6.24	5.76	6.26	5.90	6.15	5.91	6.16	5.95	6.45	5.97	6.47
	Oct	Month Average	5.70	6.20	5.73	6.23	5.76	6.26	5.90	6.15	5.92	6.17	5.96	6.46	5.97	6.47
		End-Month	5.73	6.23	5.75	6.25	5.77	6.27	5.89	6.14	5.92	6.17	5.95	6.45	5.96	6.46
	Nov	Month Average	5.71	6.21	5.74	6.24	5.77	6.27	5.90	6.15	5.93	6.18	5.96	6.46	5.97	6.47
		End-Month	5.71	6.21	5.75	6.25	5.76	6.26	5.91	6.16	5.94	6.19	5.96	6.46	5.98	6.48
	Dec	Month Average	5.73	6.23	5.76	6.26	5.79	6.29	5.92	6.17	5.96	6.21	5.98	6.48	5.99	6.49
		End-Month	5.76	6.26	5.78	6.28	5.81	6.31	5.91	6.16	5.96	6.21	5.99	6.49	6.00	6.50
2018	Jan	Month Average	5.73	6.23	5.78	6.28	5.81	6.31	5.94	6.19	5.98	6.23	6.01	6.51	6.03	6.53
		End-Month	5.91	6.41	5.95	6.45	5.98	6.48	6.12	6.37	6.18	6.43	6.20	6.70	6.24	6.74
	Feb	Month Average	5.92	6.42	5.96	6.46	5.99	6.49	6.11	6.36	6.19	6.44	6.21	6.71	6.24	6.74
		End-Month	5.92	6.42	5.96	6.46	6.00	6.50	6.13	6.38	6.21	6.46	6.22	6.72	6.26	6.76
	Mar	Month Average	5.93	6.43	5.98	6.48	6.02	6.52	6.18	6.43	6.26	6.51	6.29	6.79	6.37	6.87
		End-Month	5.93	6.43	5.99	6.49	6.03	6.53	6.25	6.50	6.36	6.61	6.38	6.88	6.44	6.94
	Apr	Month Average	5.90	6.40	5.94	6.44	5.98	6.48	6.16	6.41	6.25	6.50	6.30	6.80	6.41	6.91
		End-Month	5.92	6.42	5.96	6.46	5.99	6.49	6.15	6.40	6.26	6.51	6.32	6.82	6.44	6.94
	May	Month Average	5.96	6.46	6.00	6.50	6.07	6.57	6.25	6.50	6.34	6.59	6.42	6.92	6.55	7.05
		End-Month	6.23	6.73	6.29	6.79	6.36	6.86	6.55	6.80	6.64	6.89	6.70	7.20	6.83	7.33

KIBOR :Karachi Interbank Offered Rate

Source: Reuters

Archive Link: http://www.sbp.org.pk/ecodata/kibor_index.asp

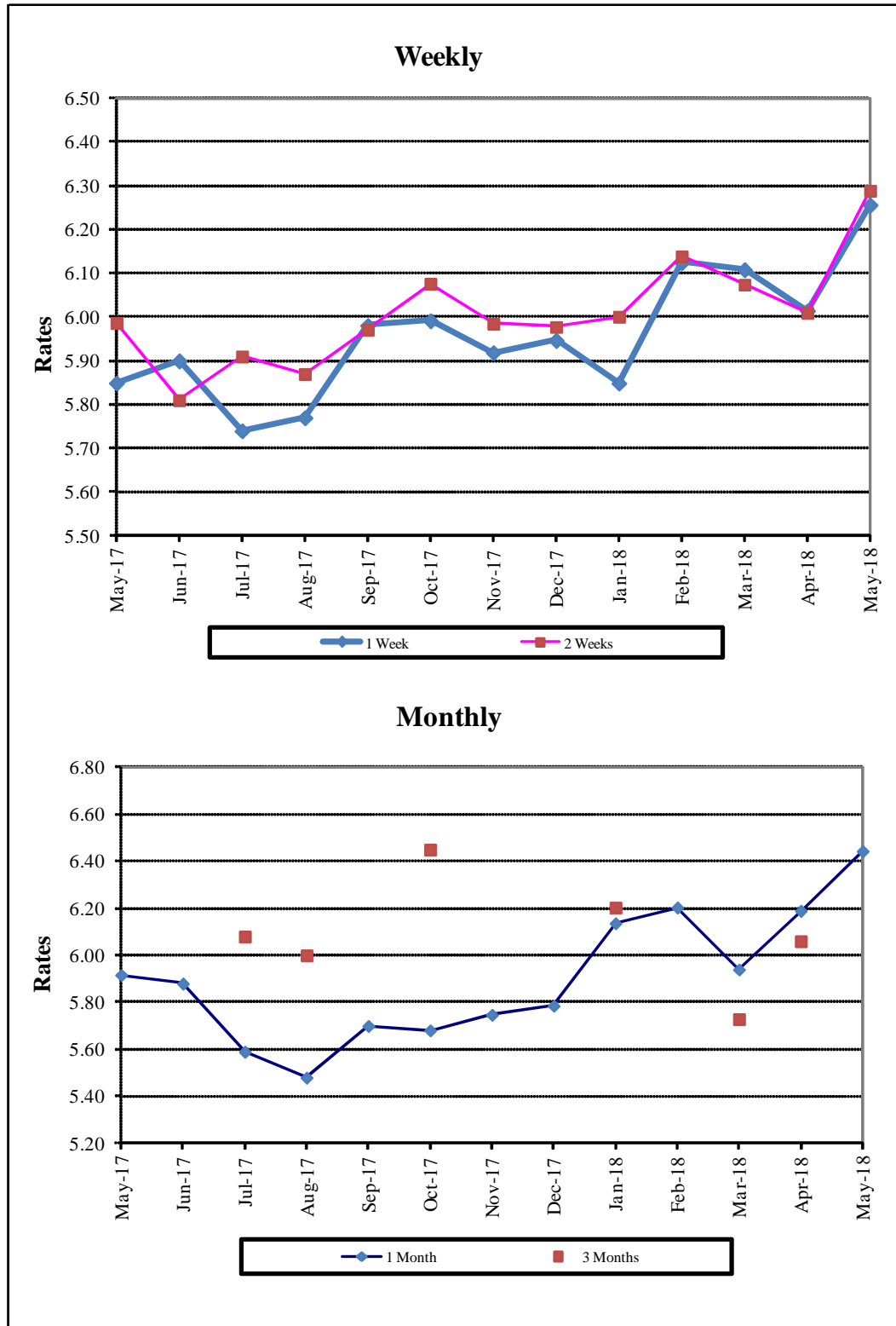
6.7 Inter-Bank Weighted Average Call Rates

		(Per Annum)						
PERIODS		Overnight	1 Week	2 Weeks	1 Month	3 Months	6 Months	
2017	Apr	5.87	6.09	5.98	5.96	-	-	
	May	5.78	5.85	5.99	5.92	-	6.35	
	Jun	5.79	5.90	5.81	5.88	-	-	
	Jul	5.77	5.74	5.91	5.59	6.08	-	
	Aug	5.76	5.77	5.87	5.48	6.00	5.80	
	Sep	5.84	5.98	5.97	5.70	-	5.81	
	Oct	5.82	5.99	6.08	5.68	6.45	5.81	
	Nov	5.77	5.92	5.98	5.75	-	-	
	Dec	5.95	5.95	5.98	5.79	-	-	
	2018	Jan	5.73	5.85	6.00	6.14	6.20	-
		Feb	6.01	6.12	6.14	6.20	-	-
		Mar	6.03	6.11	6.07	5.94	5.73	6.17
Apr		6.09	6.01	6.01	6.19	6.06	6.16	
May		6.13	6.26	6.29	6.44	-	6.15	

Source: Domestic Markets & Monetary Management Department, SBP

Note: Weighted Average Call Rates of all the call deals executed during the month.

Inter- Bank Weighted Average Call Rates



6.8 SBP Mark to Market Rates Major Currencies

Date	US Dollar			Euro			Japanese Yen			UK Pound Sterling		
	Ready	1Week	1 Month	Ready	1Week	1 Month	Ready	1Week	1 Month	Ready	1Week	1 Month
2-May-18	115.6177	115.6788	115.7726	138.7990	138.9382	139.2856	1.0529	1.0540	1.0564	157.7777	157.9080	158.2028
3-May-18	115.6145	115.6891	115.7926	138.5755	138.7282	139.0824	1.0554	1.0565	1.0590	157.0738	157.2195	157.5207
4-May-18	115.6166	115.7077	115.8474	138.3526	138.5260	138.9225	1.0601	1.0614	1.0642	156.7299	156.8981	157.2606
7-May-18	115.6173	115.7053	115.8403	137.9083	138.0776	138.4680	1.0577	1.0589	1.0617	156.4706	156.6345	156.9903
8-May-18	115.6182	115.7101	115.8588	137.4354	137.6078	138.0185	1.0607	1.0620	1.0649	156.2234	156.3909	156.7537
9-May-18	115.6183	115.7117	115.8947	137.0886	137.2626	137.7048	1.0534	1.0547	1.0579	156.4604	156.6303	157.0322
10-May-18	115.6183	115.7079	115.8900	137.3603	137.5298	137.9721	1.0535	1.0548	1.0580	156.8593	157.0234	157.4258
11-May-18	115.6172	115.7082	115.8955	137.9140	138.0858	138.5365	1.0580	1.0593	1.0626	156.5111	156.6772	157.0894
14-May-18	115.6181	115.7111	115.9022	138.5683	138.7425	139.2187	1.0550	1.0562	1.0597	157.0152	157.1843	157.6143
15-May-18	115.6182	115.7113	115.9070	137.8747	138.0489	138.5206	1.0520	1.0533	1.0566	156.7378	156.9075	157.3382
16-May-18	115.6179	115.7125	115.9425	136.5795	136.7575	137.2615	1.0499	1.0512	1.0548	155.8588	156.0321	156.5075
18-May-18	115.5923	115.6865	115.9086	136.5897	136.7645	137.2563	1.0429	1.0442	1.0477	156.1537	156.3225	156.7843
21-May-18	115.6180	115.7125	115.9085	135.6777	135.8518	136.3362	1.0383	1.0396	1.0431	155.0726	155.2424	155.6873
22-May-18	115.6183	115.7069	115.9148	136.5683	136.7356	137.2274	1.0417	1.0430	1.0465	155.8245	155.9856	156.4400
23-May-18	115.6185	115.7073	115.9321	135.5279	135.6965	136.1935	1.0521	1.0533	1.0570	154.7090	154.8708	155.3363
24-May-18	115.6183	115.7008	115.9174	135.7012	135.8611	136.3484	1.0543	1.0555	1.0591	154.8360	154.9894	155.4457
25-May-18	115.6187	115.7116	115.9260	135.2219	135.3951	135.8823	1.0568	1.0581	1.0617	154.3626	154.5328	154.9829
28-May-18	115.6359	115.7333	115.9646	135.1610	135.3387	135.8346	1.0562	1.0575	1.0612	154.0038	154.1784	154.6520
29-May-18	115.6195	115.7005	115.8982	133.6735	133.8308	134.2759	1.0641	1.0653	1.0686	152.9993	153.1516	153.5725
30-May-18	115.6181	115.6733	115.8269	134.0649	134.1898	134.6416	1.0634	1.0643	1.0677	153.4483	153.5621	153.9727
31-May-18	115.6035	115.6508	115.8001	135.5335	135.6488	136.0910	1.0625	1.0633	1.0666	154.2440	154.3481	154.7491

Source: Domestic Markets & Monetary Management Department, SBP

6.8 SBP Mark to Market Rates Major Currencies

Date	Swiss Frank			Australian Dollar			Saudi Arabian Riyal			Kuwaiti Dinar		
	Ready	1Week	1 Month	Ready	1Week	1 Month	Ready	1Week	1 Month	Ready	1Week	1 Month
2-May-18	116.1987	116.3246	116.6453	86.8925	86.9391	87.0132	30.8293	30.8471	30.8739	383.6722	383.9515	384.5034
3-May-18	115.9275	116.0651	116.3894	87.0577	87.1154	87.1982	30.8285	30.8490	30.8788	383.6679	384.0011	384.5769
4-May-18	115.8251	115.9787	116.3409	86.9668	87.0379	87.1493	30.8290	30.8544	30.8947	383.7260	384.1067	384.8097
7-May-18	115.1624	115.3117	115.6659	86.8228	86.8914	86.9992	30.8284	30.8529	30.8920	383.5627	383.9331	384.6201
8-May-18	115.2380	115.3910	115.7569	86.3264	86.3943	86.5081	30.8287	30.8542	30.8969	383.4196	383.8105	384.4986
9-May-18	115.3012	115.4657	115.8590	86.0489	86.1189	86.2581	30.8291	30.8550	30.9069	383.2035	383.6150	384.4168
10-May-18	115.2322	115.3929	115.7853	86.5114	86.5784	86.7176	30.8287	30.8535	30.9056	383.2226	383.5996	384.4470
11-May-18	115.4960	115.6494	116.0566	87.3141	87.3825	87.5264	30.8292	30.8544	30.9079	383.2827	383.6641	384.5367
14-May-18	115.6644	115.8194	116.2493	87.2801	87.3500	87.4981	30.8286	30.8544	30.9089	383.4827	383.8930	384.7439
15-May-18	115.6124	115.7674	116.1935	86.9333	87.0036	87.1554	30.8286	30.8544	30.9102	383.3304	383.7410	384.6090
16-May-18	115.5948	115.7530	116.2110	86.5285	86.6002	86.7788	30.8294	30.8556	30.9205	382.9233	383.3262	384.4120
18-May-18	115.6212	115.7777	116.2452	86.9197	86.9911	87.1649	30.8217	30.8479	30.9102	382.6801	383.0802	384.1194
21-May-18	115.7163	115.8735	116.3178	86.9505	87.0229	87.1803	30.8282	30.8544	30.9097	382.4800	382.8813	383.7089
22-May-18	116.0884	116.2403	116.6905	87.8468	87.9157	88.0846	30.8295	30.8541	30.9131	382.6709	383.0404	383.9064
23-May-18	116.6214	116.7746	117.2333	87.1069	87.1758	87.3562	30.8283	30.8530	30.9148	382.5955	382.9707	383.8874
24-May-18	116.5448	116.6918	117.1419	87.4306	87.4948	87.6706	30.8295	30.8524	30.9138	382.6330	382.9884	383.8768
25-May-18	116.5277	116.6851	117.1343	87.4020	87.4734	87.6472	30.8284	30.8542	30.9132	382.5143	382.9038	383.7834
28-May-18	116.4862	116.6485	117.1048	87.4612	87.5364	87.7223	30.8342	30.8611	30.9264	382.5519	382.9587	383.9390
29-May-18	116.3935	116.5393	116.9552	87.1193	87.1826	87.3435	30.8290	30.8515	30.9070	382.3965	382.7498	383.6193
30-May-18	116.6799	116.7982	117.2222	87.0431	87.0856	87.2127	30.8294	30.8451	30.8888	382.2275	382.4922	383.1711
31-May-18	117.1261	117.2364	117.6544	87.6853	87.7228	87.8488	30.8255	30.8391	30.8817	382.6220	382.8658	383.5266

Source: Domestic Markets & Monetary Management Department, SBP

Archive Link: <http://www.sbp.org.pk/ecodata/rates/m2m/M2M-History.asp>

6.9 Secondary Market Transactions in Government Securities

(Billion Rupees)

SECURITIES / TRANSACTIONS	2017								2018					
	May	Jun	Jul	Aug	Sep	Oct	Nov	Dec	Jan	Feb	Mar	Apr	May	
PIBs														
Purchases	3,067.1	3,413.3	2,427.3	2,166.5	2,712.5	2,328.0	2,445.2	3,311.9	2,223.4	2,050.2	1,777.2	1,149.8	1,253.0	
Non Banks	Repo	4.1	3.1	7.5	4.6	10.1	4.8	3.7	5.1	5.2	3.1	5.3	21.8	25.2
	outright	32.3	16.3	74.7	28.4	51.0	45.5	45.6	25.8	65.9	40.9	31.2	102.5	93.3
Banks/PDs	Repo	204.6	116.9	139.3	123.6	77.8	109.4	68.0	105.2	156.9	56.3	199.3	391.5	348.3
	outright	207.9	170.2	299.1	100.9	174.7	165.1	158.5	183.0	334.2	192.9	145.9	203.1	247.0
SBP	Repo	2,618.2	3,106.7	1,906.7	1,909.0	2,398.9	2,003.3	2,169.4	2,992.7	1,661.3	1,756.9	1,395.6	431.0	539.3
Sales		3,067.1	3,413.3	2,427.3	2,166.5	2,712.5	2,328.0	2,445.2	3,311.9	2,223.4	2,050.2	1,777.2	1,149.8	1,253.0
Non Banks	Repo	101.9	33.8	26.2	22.7	15.1	25.1	12.3	8.1	1.2	5.4	17.3	15.0	43.1
	outright	60.5	35.6	30.6	14.7	50.5	34.4	43.6	41.5	24.8	35.9	38.5	49.1	72.4
Banks/PDs	Repo	2,725.0	3,192.9	2,027.3	2,014.4	2,471.7	2,092.4	2,228.8	3,095.0	1,822.2	1,810.9	1,582.9	829.3	869.7
	outright	179.7	150.9	343.2	114.6	175.2	176.2	160.5	167.3	375.2	198.0	138.6	256.4	267.8
SBP	Repo	-	-	-	-	-	-	-	-	-	-	-	-	-
Net Position		-	-	-	-	-	-	-	-	-	-	-	-	-
Treasury Bills														
Purchases		5,886.5	6,829.6	6,704.7	8,074.0	8,904.6	8,399.2	8,545.7	9,585.7	7,208.3	7,387.9	7,302.8	7,833.9	6,963.4
Non Banks	Repo	82.8	84.5	50.9	59.4	64.2	68.6	85.0	68.1	65.5	98.9	101.4	135.4	152.0
	outright	188.7	114.4	287.4	278.5	138.6	361.3	254.3	206.5	375.7	410.6	306.7	612.2	426.2
Banks/PDs	Repo	1,869.6	1,870.2	1,418.9	1,695.8	1,646.3	1,793.4	1,958.4	2,003.0	2,257.4	1,737.1	3,141.0	2,145.7	2,814.3
	outright	1,060.0	682.6	1,048.6	1,973.7	1,680.1	2,143.8	2,119.1	1,559.9	1,780.7	1,363.2	1,195.5	2,171.6	1,404.3
SBP	Repo	2,685.5	4,077.9	3,898.8	4,066.7	5,375.4	4,032.1	4,129.0	5,748.2	2,729.0	3,778.2	2,558.3	2,769.1	2,166.7
Sales		5,886.5	6,829.6	6,704.7	8,074.0	8,904.6	8,399.2	8,545.7	9,585.7	7,208.3	7,387.9	7,302.8	7,833.9	6,963.4
Non Banks	Repo	153.0	68.0	128.6	117.1	76.5	80.7	94.1	108.1	76.0	97.5	134.5	145.4	89.2
	outright	118.6	153.0	75.6	140.5	150.3	126.8	164.8	215.2	164.4	194.3	292.0	251.5	294.8
Banks/PDs	Repo	4,311.8	5,906.0	5,240.0	5,704.8	6,967.8	5,695.0	5,993.8	7,464.6	4,658.3	5,516.6	4,977.2	4,781.4	4,880.0
	outright	1,130.1	644.0	1,260.4	2,111.6	1,668.4	2,378.3	2,208.6	1,551.3	1,992.1	1,579.4	1,210.1	2,532.3	1,535.7
SBP	Repo	173.0	58.7	-	-	41.5	118.5	84.5	246.5	317.5	-	689.0	123.3	163.8
Net Position		-	-	-	-	-	-	-	-	-	-	-	-	-

PDs: Primary Dealers

Source: Domestic Markets & Monetary Management Department, SBP

Note: Month-wise volume of repo/outright transactions during the month.