

4.1 Daily Foreign Exchange Rates

Pak Rupees per Currency Unit December, 2017

CURRENCY\DATE	04	05	06	07	08	11	12	13	14	15
Australian Dollar	80.0852	80.5698	79.8879	79.5321	80.0125	81.1622	82.0544	83.2191	84.0638	84.1880
Bahraini Dinar	278.5407	278.5576	278.8179	278.7465	280.0347	284.9945	288.0682	290.8436	290.3959	290.3817
Canadian Dollar	82.8921	83.1903	83.0479	82.3385	82.7886	83.8609	84.6683	85.4755	85.6272	85.9113
Chinese Yuan	15.9437	15.9504	15.9465	15.9526	16.0869	16.2452	16.4057	16.6139	16.6213	16.6333
Danish Krone	16.8244	16.8237	16.7874	16.7351	16.7902	17.1435	17.2807	17.4116	17.4857	17.4285
Hong Kong Dollar	13.5114	13.5090	13.5161	13.5216	13.6647	13.8627	14.0117	14.1423	14.1069	14.1116
Japanese Yen	0.9347	0.9366	0.9395	0.9377	0.9374	0.9469	0.9573	0.9698	0.9746	0.9777
Kuwaiti Dinar	349.7229	349.5026	349.8042	349.5677	350.8597	359.4358	362.1368	364.6259	364.6245	365.0979
Malaysian Ringgit	25.8462	26.0275	25.9492	25.8482	25.9800	26.4329	26.7274	27.0008	26.9870	26.9553
New Zealand Dollar	72.2891	72.7188	72.7787	72.2596	72.7230	74.8438	76.0813	76.6581	77.0756	77.2756
Norwegian Krone	12.7177	12.6971	12.7829	12.7654	12.8039	13.0108	13.0779	13.2346	13.2460	13.2895
Omani Riyal	273.8766	273.9386	274.1523	274.0972	275.0649	281.1003	285.3896	286.7570	286.2375	286.2633
Qatari Riyal	28.9626	28.9684	28.9899	28.9820	29.1390	29.7821	30.1767	30.3323	30.2433	30.2939
Saudi Arabian Riyal	28.1165	28.1135	28.1185	28.1234	28.4088	28.7131	29.0100	29.3153	29.2702	29.2791
Singaporean Dollar	78.1542	78.3070	78.2676	78.1868	78.7591	79.7589	80.5624	81.3131	81.4491	81.5030
Swedish Krona	12.5927	12.5361	12.6165	12.5250	12.5378	12.7923	12.8298	13.0953	13.0806	13.0418
Swiss Franc	107.2651	107.0417	106.8394	106.5069	106.8013	108.3827	109.5624	110.9604	111.4369	111.0372
Thai Bhat	3.2320	3.2408	3.2415	3.2388	3.2830	3.3228	3.3464	3.3927	3.3960	3.3891
Turkish Lira	26.8575	27.1993	27.4593	27.3806	27.6717	28.0348	28.2809	28.6175	28.7896	28.2541
UAE Dirham	28.7077	28.7050	28.7115	28.7172	28.9962	29.2989	29.6124	29.9299	29.8909	29.8982
UK Pound Sterling	141.8747	141.8797	141.5058	140.9969	143.3066	144.0013	144.8701	146.4350	147.4014	147.4259
US Dollar	105.4169	105.4103	105.4252	105.4493	106.3010	107.6121	108.6345	109.9397	109.8034	109.7979
EMU Euro	124.9845	125.0706	124.7454	124.3629	124.9314	126.6201	127.8096	129.1340	129.8079	129.2925

4.1 Daily Foreign Exchange Rates

Pak Rupees per Currency Unit December, 2017

CURRENCY\DATE	18	19	20	21	22	26	27	28	29
Australian Dollar	84.2197	84.3617	84.3574	84.4009	84.9409	85.0148	85.2693	85.7718	85.9932
Bahraini Dinar	291.5822	291.4494	291.5933	291.8237	291.6237	291.9207	291.8114	291.8348	291.7573
Canadian Dollar	85.5539	85.5750	85.5930	85.8913	86.4595	86.6204	86.8573	87.2325	87.8233
Chinese Yuan	16.6542	16.6654	16.7361	16.7976	16.7862	16.8408	16.8280	16.8616	16.9305
Danish Krone	17.4385	17.5017	17.5797	17.6143	17.5879	17.6154	17.6156	17.6860	17.7266
Hong Kong Dollar	14.1372	14.1404	14.1413	14.1293	14.1181	14.1523	14.1490	14.1474	14.1392
Japanese Yen	0.9761	0.9775	0.9752	0.9714	0.9718	0.9721	0.9726	0.9742	0.9780
Kuwaiti Dinar	365.7015	365.5522	365.6607	365.8004	365.5546	365.8218	365.6312	365.8091	365.6564
Malaysian Ringgit	26.9764	27.1084	27.1108	27.0978	26.9989	27.0770	27.0433	27.0971	27.1988
New Zealand Dollar	77.4217	77.2661	76.8603	77.3577	77.4784	77.6333	77.8333	78.1848	78.3729
Norwegian Krone	13.1849	13.2237	13.2386	13.1418	13.2022	13.2767	13.3115	13.3974	13.4125
Omani Riyal	286.8219	286.8201	286.9204	286.9280	286.8837	287.1995	286.8927	286.9390	286.8368
Qatari Riyal	30.3442	30.3383	30.3463	30.3429	30.3305	30.3488	30.3351	30.3397	30.3307
Saudi Arabian Riyal	29.3347	29.3657	29.3834	29.3855	29.3766	29.3803	29.3792	29.3852	29.4217
Singaporean Dollar	81.5354	81.6933	81.8163	81.9177	81.8471	81.9699	82.0721	82.2806	82.5384
Swedish Krona	13.0032	13.1001	13.1597	13.1564	13.1618	13.2205	13.2385	13.3799	13.4025
Swiss Franc	111.0664	111.6687	111.8157	111.7124	111.3747	111.3183	111.3332	111.9600	112.7077
Thai Bhat	3.3915	3.3699	3.3715	3.3762	3.3746	3.3706	3.3647	3.3863	3.3836
Turkish Lira	28.4986	28.8532	28.7996	28.8716	28.8991	29.0256	28.9927	28.9605	29.2162
UAE Dirham	29.9565	29.9864	30.0070	30.0091	30.0037	30.0067	30.0045	30.0060	30.0420
UK Pound Sterling	146.6103	147.2073	147.4845	147.1465	147.2935	147.2115	147.2862	147.7997	148.3562
US Dollar	110.0024	110.1059	110.1786	110.1828	110.1655	110.1631	110.1738	110.1869	110.3007
EMU Euro	129.3151	129.7208	130.4107	130.6687	130.4671	130.6753	130.6664	131.1974	131.6803

Note: The Exchange Rates are mid points of T.T. Buying and Selling.

Archive Link: <http://www.sbp.org.pk/ecodata/rates/m2m/M2M-History.asp>

4.2 Foreign Exchange Average Rates

Pak Rupees per US Dollar

PERIOD	2008-09	2009-10	2010-11	2011-12	2012-13	2013-14	2014-15	2015-16	2016-17	2017-18
Jul	70.5896	82.0062	85.5031	86.0204	94.3779	100.4754	98.6543	101.7194	104.7388	105.4250
Aug	74.2926	82.7716	85.6070	86.6211	94.4660	102.9331	100.0897	102.3361	104.6221	105.3079
Sep	77.1668	82.8462	85.7618	87.4744	94.5877	105.2488	102.3425	104.2068	104.5396	105.3207
Oct	80.4331	83.2176	85.9416	86.9655	95.3487	106.1966	102.7537	104.4807	104.5985	105.3391
Nov	79.9239	83.4540	85.5440	86.9316	95.9926	107.5054	101.7874	105.3726	104.6935	105.3626
Dec	78.9238	84.0021	85.7072	89.3402	97.1870	106.9710	100.8234	104.6578	104.7248	108.6974
Jan	79.0856	84.5184	85.6778	90.1357	97.4720	105.3857	100.6834	104.8388	104.7301	
Feb	79.4485	84.8991	85.3141	90.6186	97.9687	105.0605	101.3651	104.6232	104.7204	
Mar	80.2355	84.3500	85.3380	90.7135	98.0605	99.9777	101.7598	104.6470	104.7417	
Apr	80.3958	83.9386	84.6278	90.6345	98.3119	97.4928	101.7004	104.6738	104.7474	
May	80.5268	84.3318	85.2122	91.2605	98.3739	98.5947	101.8043	104.6787	104.7381	
Jun	80.9574	85.2844	85.7859	94.1151	98.5796	98.4679	101.7725	104.5864	104.7702	
Jul- Sep	74.0163	82.5413	85.6240	86.7053	94.4772	102.8858	100.3622	102.7541	104.6335	105.3512
Oct -Dec	79.7603	83.5579	85.7309	87.7458	96.1761	106.8910	101.7882	104.8370	104.6723	106.4664
Jan - Mar	79.5899	84.5892	85.4433	90.4893	97.8337	103.4747	101.2694	104.7030	104.7307	
Apr - Jun	80.6267	84.5183	85.2086	92.0034	98.4218	98.1851	101.7591	104.6463	104.7519	
Annual	78.4983	83.8017	85.5017	89.2359	96.7272	102.8591	101.2947	104.2351	104.6971	

4.3 NEER and REER Indices of Pakistani Rupees (Average)

(Base 2010 = 100)

PERIOD	NEER		REER	
	Index	% Change	Index	% Change
2014	85.4699	1.9659	109.6696	7.3438
2015	92.1563	7.8231	119.9030	9.3311
2016	91.9928	(0.0018)	122.4015	0.0208
2017				
I	94.3886	0.8478	126.4953	0.6574
II	92.8846	(1.5935)	126.2619	(0.1845)
III	89.9692	(3.1387)	122.3916	(3.0653)
IV	89.1259	(0.9374)	122.2388	(0.1249)
2016				
Nov	93.4795	1.3828	125.9629	1.6288
Dec	93.4795	1.3828	125.9629	1.6288
2017				
Jul	90.7945	(1.4986)	123.5379	(1.1003)
Aug	89.8945	(0.9913)	122.1611	(1.1145)
Sep	89.2187	(0.7517)	121.4758	(0.5609)
Oct ^f	90.1051	0.9935	123.4875	1.6560
Nov ^f	90.3218	0.2405	124.1086	0.5029
Dec ^p	86.9509	(3.7321)	119.1203	(4.0193)

Note: 1. An increase (+)/decrease (-) in NEER and REER indices indicates Nominal and Real appreciation/depreciation in the value of Pak Rs. against basket of currencies.

2. Annual/quarter/monthly data represents average for the respective calendar year, quarter and month

3. Base Year has been changed from 2005=100 to 2010=100 to aligned with International Monetary Fund (IMF)

4. REER indices may be revised due to revision in Base Year of Consumer Price Indices (CPIs) data of trading partner countries.

Archive Link: <http://www.sbp.org.pk/ecodata/NEER-REER.xls>

4.4 Average Exchange Rate of Major Currencies

Pak Rupees per Currency Unit

CURRENCY \ PERIOD	2015-16	2016-17	2016		2017				
			Nov	Dec	Aug	Sep	Oct	Nov	Dec
Australian Dollar	75.8551	78.9703	78.9017	76.8798	83.3388	83.9437	82.0167	80.3066	83.1108
Bahraini Dinar	275.5166	276.8340	276.8458	276.9317	278.3514	278.3671	278.3445	278.2796	287.6199
Canadian Dollar	78.6541	78.9236	77.8457	78.3961	83.5226	85.7744	83.7159	82.5372	85.1267
Chinese Yuan	16.1983	15.4059	15.3250	15.1496	15.8332	16.0861	15.9368	15.9233	16.5000
Danish Krone	15.5273	15.3577	15.2315	14.8663	16.7440	16.8832	16.6554	16.6296	17.3198
Hong Kong Dollar	13.4416	13.5015	13.5149	13.5139	13.4872	13.5043	13.5183	13.5225	13.9585
Japanese Yen	0.8959	0.9611	0.9699	0.9029	0.9583	0.9510	0.9327	0.9335	0.9622
Kuwaiti Dinar	345.2872	345.0024	344.9733	343.0494	349.2093	349.7035	348.8609	348.9124	360.8719
Malaysian Ringgit	25.2457	24.4675	24.1891	23.4912	24.6052	25.0475	24.9284	25.2728	26.7086
New Zealand Dollar	69.5939	74.6007	74.8741	73.6750	76.9634	76.4078	74.2472	72.5456	75.9533
Norwegian Krone	12.4110	12.4644	12.4766	12.2478	13.3582	13.4624	13.1992	12.8984	13.1060
Omani Riyal	270.9150	272.1248	272.1148	272.1712	273.6120	273.6808	273.7551	273.8184	283.1115
Qatari Riyal	28.6560	28.7657	28.7832	28.7865	28.8447	28.7475	28.4988	28.4503	29.9435
Saudi Arabian Riyal	27.7996	27.9260	27.9250	27.9305	28.0850	28.0882	28.0948	28.1001	28.9937
Singaporean Dollar	74.9776	75.1927	74.2481	72.9163	77.3793	78.0465	77.4324	77.6830	80.7333
Swedish Krona	12.4006	11.8827	11.4982	11.3762	13.0477	13.1836	12.9132	12.5906	12.9721
Swiss Franc	106.3904	105.5866	105.2422	102.6806	109.0549	109.4430	107.3577	106.2116	110.0416
Thai Baht	2.9394	3.0034	2.9676	2.9300	3.1689	3.1802	3.1718	3.2034	3.3406
Turkish lira	35.9532	31.2311	31.9462	29.9551	30.0419	30.3565	28.6989	27.1334	28.3506
UAE Dirham	28.3865	28.5170	28.5165	28.5255	28.6767	28.6797	28.6857	28.6926	29.6047
UK Pound Sterling	154.4878	132.7123	130.0219	130.5820	136.4857	140.3471	139.0289	139.2230	145.5839
US Dollar	104.2351	104.6971	104.6935	104.7248	105.3079	105.3207	105.3391	105.3626	108.6974
EMU Euro	115.6294	114.0341	113.1116	110.3385	124.3211	125.4170	123.7944	123.5592	128.5032

Note: - The Exchange Rates are Mid Points of T.T. Buying and Selling.

Archive Link: http://www.sbp.org.pk/ecodata/IBF_Arch.xls

4.5 Appreciation / Depreciation* of Selected Currencies Against US Dollar

(In Percent)

END OF PERIOD	Chinese Yuan	EMU Euro	Indian Rupee	Indonesian Rupiah	Iranian Rial	Japanese Yen	Malaysian Ringgit	Pakistani Rupee	UK Pound Sterling	South Korean Won	Swiss Franc	Turkish Lira
2015	-5.74	-10.33	-4.52	-9.82	-9.93	+0.01	-18.57	-4.20	-5.06	-6.21	-0.30	-20.07
2016	-6.59	-3.18	-2.40	+2.67	-6.64	+3.25	-4.32	+0.05	-16.99	-3.02	-2.53	-17.05
2017	+6.73	+13.78	+6.30	-0.83	-10.32	+3.45	+10.44	-5.09	+9.83	+12.80	+4.30	-7.10
2016 II	-2.67	-2.49	-1.90	+0.73	-1.59	+9.46	-2.50	-0.01	-6.35	-0.96	-1.43	-2.34
III	-0.39	+0.53	+1.44	+1.40	-2.59	+1.80	-2.97	+0.06	-3.91	+6.24	+0.18	-4.04
IV	-4.02	-5.55	-1.91	-3.26	-2.35	-13.46	-7.59	-0.11	-5.09	-9.28	-4.28	-14.66
2017 I	+0.85	+1.42	+4.81	+0.86	-0.68	+4.24	+1.34	-0.04	+1.22	+8.28	+1.68	-3.14
II	+1.65	+6.75	+0.57	+0.86	+0.02	-0.21	+3.04	-0.03	+4.12	-2.24	+4.40	+3.31
III	+1.97	+3.44	-1.35	-2.11	-3.79	-0.33	+1.62	-0.51	+3.22	-0.44	-1.09	-1.18
IV	+2.10	+1.58	+2.23	-0.41	-6.17	-0.21	+4.07	-4.54	+0.95	+7.03	-0.66	-6.05
2016 Nov	-1.68	-2.84	-2.59	-3.78	-0.85	-6.75	-5.87	-0.01	+2.31	-1.99	-2.49	-9.49
Dec	-0.92	-0.88	+0.84	+0.95	-0.69	-3.78	-0.45	+0.03	-1.21	-3.31	-0.34	-2.74
2017 Jan	+1.02	+2.03	+0.21	+0.70	-0.28	+2.82	+1.28	-0.05	+1.30	+4.38	+2.51	-6.90
Feb	+0.15	-1.47	+1.61	-0.03	-0.11	+0.93	-0.35	+0.01	-0.17	+2.27	-1.21	+4.28
Mar	-0.32	+0.89	+2.93	+0.20	-0.28	+0.45	+0.42	+0.00	+0.10	+1.43	+0.41	-0.23
Apr	-0.10	+2.23	+0.97	-0.05	+0.63	+0.72	+1.82	+0.05	+3.93	-1.24	+1.09	+2.34
May	+1.01	+2.66	-0.51	+0.05	-0.48	+0.27	+1.67	-0.06	-0.80	+0.55	+1.98	+0.53
Jun	+0.74	+1.71	+0.12	+0.86	-0.12	-1.19	-0.46	-0.02	+0.99	-1.56	+1.27	+0.42
Jul	+0.54	+2.77	+0.50	-0.89	-0.73	+1.13	+0.37	-0.51	+0.93	+2.62	-1.13	-0.16
Aug	+2.44	+1.59	+0.32	-0.13	-1.33	+1.08	+0.25	+0.15	-1.23	-1.22	+1.39	+2.08
Sep	-0.99	-0.92	-2.16	-1.10	-1.77	-2.49	+0.99	-0.14	+3.55	-1.79	-1.33	-3.04
Oct	-0.03	-1.64	+0.65	-0.65	-3.19	-0.95	-0.26	-0.01	-1.45	+1.48	-2.87	-5.75
Nov	+0.82	+1.85	+0.82	+0.48	-1.06	+2.05	+3.20	-0.06	+1.62	+3.83	+1.42	-3.85
Dec	+2.10	+1.58	+2.23	-0.41	-6.17	-0.21	+4.07	-4.54	+0.95	+7.03	-0.66	-6.05

4.6 Appreciation / Depreciation* of Selected Currencies Against SDR

(In Percent)

END OF PERIOD	Chinese Yuan	EMU Euro	Indian Rupee	Indonesian Rupiah	Iranian Rial	Japanese Yen	Malaysian Ringgit	Pakistani Rupee	Saudi Arabian Riyal	UK Pound Sterling	South Korean Won	Swiss Franc	Turkish Lira	US Dollar
2015	-1.45	-6.25	-0.17	-5.72	-5.83	+4.56	-14.86	+0.16	-0.73	+4.55	-1.94	+4.24	-16.43	+4.55
2016	-3.72	-0.20	+0.61	+5.83	-3.77	+6.43	-1.38	+3.13	-14.43	+0.08	-0.03	+0.48	-14.50	+3.08
2017	+0.75	+7.40	+0.34	-6.38	-15.34	-2.34	+4.25	-10.41	+3.68	-5.60	+6.48	-1.54	-12.31	-5.60
2016 II	+0.71	-5.69	+0.71	-0.26	-0.73	-1.65	+0.71	+0.71	-5.69	+0.71	-0.26	-0.73	-1.65	+0.71
III	-0.17	+0.75	+1.66	+1.62	-2.38	+2.02	-2.76	+0.28	-3.70	+0.22	+6.47	+0.40	-3.83	+0.22
IV	-0.34	-1.94	+1.85	+0.45	+1.39	-10.14	-4.05	+3.72	-1.45	+3.83	-5.81	-0.62	-11.40	+3.83
2017 I	-0.08	+0.49	+3.84	-0.07	-1.60	+3.28	+0.41	-0.96	+0.29	-0.92	+7.28	+0.74	-4.03	-0.92
II	-0.82	+4.16	-1.87	-1.59	-2.41	-2.64	+0.54	-2.46	+1.59	-2.43	-4.62	+1.87	+0.80	-2.43
III	+0.33	+1.78	-2.93	-3.68	-5.33	-1.93	-0.01	-2.10	+1.57	-1.60	-2.03	-2.68	-2.77	-1.60
IV	+1.32	+0.81	+1.46	-1.17	-6.88	-0.97	+3.28	-5.26	+0.18	-0.76	+6.21	-1.41	-6.77	-0.76
2016 Nov	-0.22	-1.40	-1.14	-2.35	+0.62	-5.37	-4.47	+1.48	+3.83	+1.48	-0.54	-1.05	-8.15	+1.48
Dec	-0.23	-0.19	+1.55	+1.65	+0.01	-3.10	+0.25	+0.74	-0.51	+0.70	-2.63	+0.36	-2.05	+0.70
2017 Jan	-0.06	+0.94	-0.86	-0.38	-1.35	+1.72	+0.19	-1.12	+0.22	-1.07	+3.27	+1.41	-7.90	-1.07
Feb	+0.51	-1.11	+1.98	+0.33	+0.25	+1.30	+0.02	+0.38	+0.19	+0.36	+2.64	-0.85	+4.66	+0.36
Mar	-0.53	+0.67	+2.70	-0.02	-0.50	+0.23	+0.20	-0.22	-0.12	-0.22	+1.21	+0.19	-0.44	-0.22
Apr	-1.13	+1.18	-0.08	-1.08	-0.41	-0.32	+0.76	-0.98	+2.85	-1.03	-2.26	+0.04	+1.28	-1.03
May	+0.04	+1.68	-1.46	-0.92	-1.44	-0.69	+0.70	-1.02	-1.75	-0.96	-0.41	+1.00	-0.44	-0.96
Jun	+0.28	+1.25	-0.34	+0.40	-0.57	-1.64	-0.92	-0.48	+0.54	-0.45	-2.01	+0.81	-0.04	-0.45
Jul	-0.53	+1.68	-0.56	-1.94	-1.78	+0.05	-0.69	-1.56	-0.15	-1.06	+1.54	-2.18	-1.22	-1.06
Aug	+1.52	+0.68	-0.58	-1.02	-2.22	+0.18	-0.65	-0.75	-2.11	-0.90	-2.10	+0.48	+1.17	-0.90
Sep	-0.65	-0.58	-1.82	-0.76	-1.43	-2.15	+1.35	+0.20	+3.91	+0.35	-1.44	-0.99	-2.70	+0.35
Oct	+0.67	-0.96	+1.35	+0.04	-2.51	-0.26	+0.44	+0.69	-0.76	+0.70	+2.18	-2.19	-5.09	+0.70
Nov	-0.11	+0.92	-0.10	-0.44	-1.96	+1.12	+2.26	-0.98	+0.69	-0.91	+2.88	+0.50	-4.73	-0.91
Dec	+1.32	+0.81	+1.46	-1.17	-6.88	-0.97	+3.28	-5.26	+0.18	-0.76	+6.21	-1.41	-6.77	-0.76

4.7 Appreciation / Depreciation* of Pak Rupee Against Selected Currencies

(In Percent)

END OF PERIOD	2015	2016	2017	Quarterly			2016		2017				
				2017			Nov	Dec	Aug	Sep	Oct	Nov	Dec
				II	III	IV							
Australian Dollar	+7.55	+1.02	-11.95	-0.27	-2.75	-4.06	+1.85	+3.33	+0.01	+1.66	+2.11	+1.14	-4.06
Brazilian Real	+40.83	-16.51	-3.66	+5.67	-4.00	-0.92	+7.05	-4.28	+0.72	+0.41	+2.91	-1.80	-0.92
Canadian Dollar	+14.34	-2.94	-11.23	-2.25	-4.60	-3.94	+0.16	+0.04	+1.42	-1.14	+2.86	+0.06	-3.94
Chinese Yuan	+1.63	+7.11	-11.07	-1.66	-2.43	-6.50	+1.70	+0.96	-2.24	+0.85	+0.03	-0.87	-6.50
EMU Euro	+6.83	+3.33	-16.58	-6.36	-3.82	-6.03	+2.92	+0.93	-1.43	+0.78	+1.67	-1.88	-6.03
Hong Kong Dollar	-4.18	+0.02	-4.35	+0.47	-0.50	-4.49	-0.11	+0.13	-0.01	+0.01	-0.13	-0.98	-4.49
Indian Rupee	+0.33	+2.51	-10.71	-0.60	+0.86	-6.62	+2.65	-0.80	-0.17	+2.06	-0.65	-0.87	-6.62
Indonesian Rupiah	+6.23	-2.55	-4.30	-0.88	+1.64	-4.14	+3.91	-0.90	+0.27	+0.97	+0.65	-0.54	-4.14
Iranian Rial	+6.36	+7.17	+5.83	-0.05	+3.41	+1.74	+0.85	+0.73	+1.50	+1.66	+3.29	+1.00	+1.74
Japanese Yen	-4.21	-3.10	-8.26	+0.18	-0.18	-4.33	+7.23	+3.96	-0.93	+2.41	+0.95	-2.07	-4.33
Korean Won	+2.14	+3.17	-15.86	+2.26	-0.07	-10.81	+2.03	+3.46	+1.38	+1.67	-1.46	-3.75	-10.81
Malaysian Ringgit	+17.64	+4.57	-14.06	-2.98	-2.09	-8.27	+6.22	+0.48	-0.10	-1.13	+0.26	-3.16	-8.27
Saudi Arabian Riyal	-4.20	+0.05	-5.09	-0.03	-0.51	-4.54	-0.01	+0.03	+0.15	-0.14	-0.01	-0.06	-4.54
Singaporean Dollar	+2.51	+2.34	-12.29	-1.25	-2.12	-6.07	+2.35	+1.53	-0.31	+0.14	+0.51	-1.44	-6.07
Swedish Krona	+2.43	+8.97	-14.11	-4.74	-5.23	-3.08	+1.80	-0.66	-2.63	+1.83	+2.82	+0.02	-3.08
Swiss Franc	-3.91	+2.64	-9.01	-4.25	+0.59	-3.91	+2.55	+0.38	-1.23	+1.20	+2.95	-1.46	-3.91
Taiwani Dollar	-0.41	-2.48	-11.97	+0.21	-0.90	-6.40	+1.48	+0.14	-0.35	+0.71	-0.42	-0.98	-6.40
Thai Baht	+5.23	-1.00	-13.46	-1.45	-2.24	-6.57	+1.75	+0.60	-0.21	+0.33	-0.35	-2.10	-6.57
UK Pound Sterling	+0.90	+20.52	-13.59	-3.99	-3.61	-5.44	-2.27	+1.26	+1.39	-3.57	+1.47	-1.65	-5.44
U.S Dollar	-4.20	+0.05	-5.09	-0.03	-0.51	-4.54	-0.01	+0.03	+0.15	-0.14	-0.01	-0.06	-4.54
UAE Dirham	-4.20	+0.05	-5.09	-0.03	-0.51	-4.54	-0.01	+0.03	+0.15	-0.14	-0.01	-0.06	-4.54

4.8 Workers' Remittances

(Million US Dollars)

COUNTRIES	2013-14	2014-15	2015-16	2016-17	Dec		Jul-Dec	
					2016 ^R	2017 ^P	2016-17 ^R	2017-18 ^P
I. Cash	15,837.68	18,719.80	19,916.76	19,351.4	1,585.37	1,723.57	9,505.11	9,744.75
1.USA	2,467.65	2,702.66	2,524.73	2,452.9	182.19	234.76	1,172.27	1,280.62
2.UK	2,180.23	2,376.15	2,579.69	2,341.7	181.85	223.30	1,097.73	1,350.31
3.Saudi Arabia	4,729.43	5,630.43	5,968.25	5,469.8	475.75	431.97	2,734.96	2,530.73
4.UAE	3,109.52	4,231.75	4,365.29	4,328.2	339.95	396.74	2,136.68	2,160.73
Dubai	1,550.03	2,411.96	2,877.74	2,845.3	216.66	286.73	1,322.62	1,614.82
Abu Dhabi	1,512.45	1,750.65	1,418.28	1,426.8	119.37	106.06	787.52	514.74
Sharjah	45.54	67.64	66.50	50.5	3.48	3.46	23.07	28.32
Others	1.50	1.50	2.77	5.5	0.44	0.49	3.47	2.85
5.Other GCC Countries	1,860.03	2,173.03	2,422.71	2,325.5	203.63	188.76	1,155.64	1,128.61
Bahrain	318.84	388.99	448.44	396.4	37.03	35.41	198.01	203.60
Kuwait	681.43	748.12	773.97	763.8	63.41	65.56	386.66	395.52
Qatar	329.24	350.21	380.86	404.4	35.66	30.41	145.96	189.63
Oman	530.52	685.71	819.44	760.9	67.53	57.38	386.26	339.86
6.EU Countries	431.85	364.07	417.77	482.7	35.09	54.87	230.38	314.95
Germany	85.58	78.13	93.66	94.1	6.89	9.93	45.14	59.68
France	34.39	24.85	36.54	47.4	3.92	4.41	24.44	26.32
Netherlands	4.24	3.67	5.19	5.5	0.40	0.66	2.60	3.06
Spain	79.83	47.25	52.97	55.8	2.77	12.85	20.77	63.92
Italy	33.25	30.89	43.50	60.7	4.11	7.90	29.12	48.97
Greece	14.88	14.00	9.83	23.2	1.74	2.73	11.10	14.78
Sweden	14.89	11.61	15.46	18.9	1.31	1.45	8.54	9.48
Denmark	23.70	14.57	10.38	12.8	0.90	0.96	5.97	6.35
Ireland	137.60	133.29	142.70	155.3	12.31	12.61	78.34	75.21
Belgium	3.49	5.81	7.54	9.0	0.74	1.37	4.36	7.18
7.Norway	30.77	27.58	34.87	41.3	3.06	3.59	20.96	23.24
8.Switzerland	29.42	29.84	25.69	26.4	2.10	2.12	12.15	14.26
9.Australia	159.59	175.62	193.90	204.7	15.41	22.03	97.50	117.44
10.Canada	160.03	170.99	175.99	187.4	14.96	15.88	88.01	99.29
11.Japan	7.09	7.75	13.18	14.3	0.92	1.68	7.26	8.73
12.Other Countries	672.07	829.93	1,194.69	1,476.5	130.46	147.87	751.57	715.84
II. Encashment and Profit in Pak. Rs. of FEBCs & FCBCs	0.03	0.20	-	-	-	-	-	-
Total (I+II)	15,837.71	18,720.00	19,916.76	19,351.4	1,585.37	1,723.57	9,505.11	9,744.75

Archive Link: http://www.sbp.org.pk/ecodata/Homeremit_Arch.xls

4.9 Pakistan's Balance of Payments

(Million US Dollars)

I T E M S	Jul-Jun			Jul-Dec					
	FY17 ^R			FY17 ^R			FY18 ^P		
	Credit	Debit	Net	Credit	Debit	Net	Credit	Debit	Net
1. Current Account (A+B+C)	51,780	64,219	(12,439)	24,897	29,557	(4,660)	26,740	34,153	(7,413)
A. Goods and services (a+b)	27,458	58,317	(30,859)	13,093	26,691	(13,598)	14,356	31,239	(16,883)
a. Goods	21,938	48,506	(26,568)	10,629	21,971	(11,342)	11,776	26,094	(14,318)
1. General merchandise	21,925	48,506	(26,581)	10,623	21,971	(11,348)	11,767	26,094	(14,327)
2. Net exports of goods under merchanting (only export)	13	...	13	6	...	6	9	...	9
3. Nonmonetary gold	-	-	-	-	-	-	-	-	-
b. Services	5,520	9,811	(4,291)	2,464	4,720	(2,256)	2,580	5,145	(2,565)
1. Manufacturing services on physical inputs owned by others	-	-	-	-	-	-	-	-	-
2. Maintenance and repair services n.i.e.	6	67	(61)	3	31	(28)	4	18	(14)
3. Transport	928	3,872	(2,944)	478	1,807	(1,329)	460	1,908	(1,448)
4. Travel	322	1,995	(1,673)	153	1,035	(882)	183	1,055	(872)
5. Construction	72	25	47	40	3	37	35	3	32
6. Insurance and pension services	53	235	(182)	33	119	(86)	17	111	(94)
7. Financial services	142	294	(152)	51	144	(93)	58	88	(30)
8. Charges for the use of intellectual property n.i.e.	8	218	(210)	3	120	(117)	5	129	(124)
9. Telecommunications, computer, and information services	940	384	556	455	198	257	519	240	279
10. Other business services	1,248	2,066	(818)	608	964	(356)	627	1,306	(679)
11. Personal, cultural, and recreational services	21	14	7	12	6	6	7	3	4
12. Government goods and services n.i.e.	1,780	641	1,139	628	293	335	665	284	381
B. Primary Income	662	5,701	(5,039)	336	2,754	(2,418)	344	2,821	(2,477)
1. Compensation of employees	81	14	67	40	4	36	56	26	30
2. Investment income	581	5,687	(5,106)	296	2,750	(2,454)	288	2,795	(2,507)
2.1 Direct investment	35	3,318	(3,283)	16	1,616	(1,600)	13	1,485	(1,472)
2.1.1 Investment income on equity and investment fund shares	35	3,309	(3,274)	16	1,613	(1,597)	13	1,693	(1,680)
2.1.2 Interest	-	9	(9)	-	3	(3)	-	(208)	208
2.2 Portfolio investment	302	1,015	(713)	144	526	(382)	168	466	(298)
2.2.1 Investment income on equity and investment fund shares	4	377	(373)	-	207	(207)	1	145	(144)
2.2.2 Interest	298	638	(340)	144	319	(175)	167	321	(154)
2.3 Other investment	149	1,354	(1,205)	95	608	(513)	51	844	(793)
2.3.1 Withdrawals from income of quasi corporations	-	-	-	-	-	-	-	-	-
2.3.2 Interest	149	1,354	(1,205)	95	608	(513)	51	844	(793)
2.3.3 Investment income attributable to policyholders in insurance, pension fund	-	-	-	-	-	-	-	-	-
2.4 Reserve assets	95	...	95	41	...	41	56	...	56
3. Other primary income	-	-	-	-	-	-	-	-	-
C. Secondary Income	23,660	201	23,459	11,468	112	11,356	12,040	93	11,947
1. General government	537	31	506	246	23	223	270	9	261
2. Financial corporations, nonfinancial corporations, households, and NPISHs	23,123	170	22,953	11,222	89	11,133	11,770	84	11,686
2. Capital account	339	-	339	112	-	112	149	-	149
1. Gross acquisitions (DR)/disposals (CR) of nonproduced nonfinancial assets	-	-	-	-	-	-	-	-	-
2. Capital transfers	339	-	339	112	-	112	149	-	149
2.1 General government	333	-	333	109	-	109	149	-	149
2.1.1 Debt forgiveness	-	-	-	-	-	-	-	-	-
2.1.2 Other Capital transfers	333	-	333	109	-	109	149	-	149
2.2 Financial corporations, nonfinancial corporations,	6	-	6	3	-	3	-	-	-
2.2.1 Debt forgiveness	-	-	-	-	-	-	-	-	-
2.2.2 Other Capital transfers	6	-	6	3	-	3	-	-	-
Net lending (+) / net borrowing (-) (balance from current and capital accounts) (1+2)	52,119	64,219	(12,100)	25,009	29,557	(4,548)	26,889	34,153	(7,264)

4.9 Pakistan's Balance of Payments

(Million US Dollars)

I T E M S	Jul-Jun			Jul-Dec					
	FY17 ^R			FY17 ^R			FY18 ^P		
	Net acquisition of financial assets	Net incurrence of liabilities	Net	Net acquisition of financial assets	Net incurrence of liabilities	Net	Net acquisition of financial assets	Net incurrence of liabilities	Net
3. Financial account	(506)	11,416	(11,922)	643	5,146	(4,503)	(1,856)	5,514	(7,370)
1. Direct investment	101	2,731	(2,630)	41	1,421	(1,380)	6	1,383	(1,377)
1.1 Equity and investment fund shares	101	2,699	(2,598)	41	1,418	(1,377)	6	1,218	(1,212)
1.2 Debt instruments	-	32	(32)	-	3	(3)	-	165	(165)
2. Portfolio investment	(16)	(251)	235	(46)	743	(789)	80	2,324	(2,244)
2.1 Equity and investment fund shares	3	(514)	517	4	(255)	259	(4)	(124)	120
2.2 Debt instruments	(19)	263	(282)	(50)	998	(1,048)	84	2,448	(2,364)
3. Financial derivatives (other than reserves) and employees stock options	-	-	-	-	-	-	-	-	-
4. Other investment	1,253	8,936	(7,683)	319	2,982	(2,663)	(83)	1,807	(1,890)
4.1 Other equity	41	-	41	-	-	-	-	-	-
4.2 Currency and deposits	734	1	733	(50)	(39)	(11)	(449)	28	(477)
Central bank	-	(4)	4	-	2	(2)	-	4	(4)
Deposit-taking corporations, except the central bank	393	5	388	(160)	(41)	(119)	(336)	24	(360)
General government	28	-	28	14	-	14	(31)	-	(31)
Other sectors	313	-	313	96	-	96	(82)	-	(82)
4.3 Loans	-	7,021	(7,021)	-	2,403	(2,403)	-	1,636	(1,636)
Central bank	-	102	(102)	-	102	(102)	-	-	-
Deposit-taking corporations, except the central bank	-	-	-	-	-	-	-	-	-
General government	-	4,906	(4,906)	-	1,426	(1,426)	-	1,244	(1,244)
Other sectors	-	2,013	(2,013)	-	875	(875)	-	392	(392)
4.4 Insurance, pension, and std. guarantee schemes	-	-	-	-	-	-	-	-	-
Central bank	-	-	-	-	-	-	-	-	-
Deposit-taking corporations, except the central bank	-	-	-	-	-	-	-	-	-
General government	-	-	-	-	-	-	-	-	-
Other sectors	-	-	-	-	-	-	-	-	-
4.5 Trade credit and advances	541	21	520	445	23	422	288	(4)	292
Central bank	-	-	-	-	-	-	-	-	-
Deposit-taking corporations, except the central bank	-	-	-	-	-	-	-	-	-
General government	-	-	-	-	-	-	-	-	-
Other sectors	541	21	520	445	23	422	288	(4)	292
4.6 Other accounts receivable/ Payable	(63)	1,893	(1,956)	(76)	595	(671)	78	147	(69)
Central bank	-	-	-	-	-	-	-	-	-
Deposit-taking corporations, except the central bank	(63)	1,627	(1,690)	(76)	530	(606)	78	185	(107)
General government	-	-	-	-	-	-	-	-	-
Other sectors	-	266	(266)	-	65	(65)	-	(38)	38
4.7 Special drawing rights	...	-	-	...	-	-	...	-	-
5. Reserve assets	(1,844)	...	(1,844)	329	...	329	(1,859)	...	(1,859)
5.1 Monetary gold	-	...	-	...	-	-	-	...	-
5.2 Special drawing rights	(35)	...	(35)	13	...	13	(60)	...	(60)
5.3 Reserve position in the IMF	-	...	-	-	...	-	-	...	-
5.4 Other reserve assets	(1,809)	...	(1,809)	316	...	316	(1,799)	...	(1,799)
	Credit	Debit	Net	Credit	Debit	Net	Credit	Debit	Net
4. Errors and Omissions	178	-	178	45	-	45	-	106	(106)
5. Exceptional Financing	-	-	-	-	-	-	-	-	-

-- Not Applicable

From July 2013, the BOP statement is being compiled under the guideline of BPM6 see <http://www.sbp.org.pk/departments/stats/Notice/BPM6-Revision-16-Aug-13.pdf>

RR: Based on regular foreign investment survey of entities having foreign direct investment, a significant amount (\$746 million) of profit is reported to have been reinvested by foreign direct investors mainly in financial, power and telecom sectors. The reinvested earnings resulted increase in FDI and current account deficit. Details of sector-wise FDI is available at:

<http://www.sbp.org.pk/ecodata/Netinflow.pdf>

Archive Link: http://www.sbp.org.pk/ecodata/BOP_arch/index.asp

4.10 International Investment Position of Pakistan

(Million US \$)

	2016			2017		
	30-Jun	30-Sep ^R	31-Dec ^R	31-Mar ^R	30-Jun ^P	31-Dec ^P
A. Assets	32,221	32,444	32,361	29,369	30,017	27,611
1. Direct investment	1,858	1,863	1,932	1,990	1,975	1,941
1.1 Equity and investment fund shares	1,814	1,819	1,888	1,945	1,930	1,897
1.1.1 Direct investor in direct investment enterprises	1,814	1,819	1,888	1,945	1,930	1,897
1.1.2 Direct investment enterprises in direct investor (reverse investment)	-	-	-	-	-	-
1.1.3 Between fellow enterprises
1.2 Debt instruments	45	45	45	45	45	45
1.2.1 Direct investor in direct investment enterprises	12	12	12	12	12	12
1.2.2 Direct investment enterprises in direct investor (reverse investment)	33	33	33	33	33	33
1.2.3 Between fellow enterprises
2. Portfolio investment	406	347	359	380	390	362
2.1 Equity and investment fund shares	114	116	125	124	124	124
2.1.1 Central bank	-	-	-	-	-	-
2.1.2 Deposit-taking corporations, except the central bank	103	103	109	109	109	109
2.1.3 General government	-	-	-	-	-	-
2.1.4 Other sectors	11	13	16	16	16	16
2.2 Debt securities	292	231	234	256	266	238
2.2.1 Central bank	-	-	-	-	-	-
2.2.2 Deposit-taking corporations, except the central bank	243	183	227	248	258	230
2.2.3 General government	-	-	-	-	-	-
2.2.4 Other sectors	48	48	8	8	8	8
3. Financial derivatives (other than reserves) and employee stock options	20	20	22	21	23	20
4. Other investment	7,752	7,647	7,991	6,551	7,500	7,182
4.1 Other equity
4.2 Currency and deposits	1,598	1,481	1,472	1,156	2,044	1,503
4.3 Loans	119	120	120	121	122	123
4.4 Insurance, pension, and standardized guarantee schemes	-	-	-	-	-	-
4.5 Trade credit and advances	4,927	5,041	5,339	4,300	4,305	4,488
4.6 Other accounts receivable	1,107	1,007	1,060	974	1,029	1,069
5. Reserve assets	22,185	22,567	22,057	20,426	20,130	18,105
5.1 Monetary gold	2,739	2,743	2,405	2,582	2,578	2,663
5.2 Special drawing rights	645	681	634	618	607	586
5.3 Reserve position in the fund
5.4 Other reserve assets	18,801	19,143	19,019	17,225	16,944	14,855
5.4.1 Currency and deposits	13,063	9,137	8,459	8,957	8,084	5,582
5.4.2 Securities	4,549	5,964	6,069	6,465	7,172	7,335
5.4.3 Financial derivatives
5.4.4 Other claims	1,189	4,042	4,491	1,803	1,688	1,938

4.10 International Investment Position of Pakistan

(Million US \$)

	2016			2017		
	30-Jun	30-Sep ^R	31-Dec ^R	31-Mar ^R	30-Jun ^P	31-Dec ^P
B. Liabilities	112,978	117,021	122,003	123,883	129,497	130,789
1. Direct investment	35,908	37,742	41,864	42,219	42,856	43,356
1.1 Equity and investment fund shares	32,894	34,626	38,785	39,088	39,607	40,016
1.1.1 Direct investor in direct investment enterprises	32,894	34,626	38,785	39,088	39,607	40,016
1.1.2 Direct investment enterprises in direct investor (reverse investment)	-	-	-	-	-	-
1.1.3 Between fellow enterprises
1.2 Debt instruments	3,014	3,115	3,079	3,131	3,250	3,340
1.2.1 Direct investor in direct investment enterprises	3,013	3,114	3,077	3,129	3,248	3,339
1.2.2 Direct investment enterprises in direct investor (reverse investment)	2	2	2	2	2	2
1.2.3 Between fellow enterprises
2. Portfolio investment	10,755	11,414	13,146	12,825	11,850	10,786
2.1 Equity and investment fund shares	6,157	6,726	7,550	7,246	6,985	5,972
2.1.1 Central bank	n.a.
2.1.2 Deposit-taking corporations, except the central bank	2,104	2,327	2,750	2,668	2,662	2,201
2.1.3 General government
2.1.4 Other sectors	4,053	4,399	4,801	4,578	4,322	3,771
2.2 Debt securities	4,598	4,688	5,596	5,579	4,865	4,814
2.2.1 Central bank	-	-	-	-	-	-
2.2.2 Deposit-taking corporations, except the central bank	-	-	-	-	-	-
2.2.3 General government	4,586	4,676	5,584	5,565	4,851	4,801
2.2.4 Other sectors	12	12	12	14	14	13
3. Financial derivatives (other than reserves) and employee stock options	12	4	5	6	3	4
4. Other investment	66,303	67,862	66,988	68,834	74,788	76,642
4.1 Other equity
4.2 Currency and deposits	2,792	2,751	2,783	2,371	2,425	2,410
4.3 Loans	59,692	61,277	60,461	62,677	68,527	70,343
4.4 Insurance, pension, and standardized guarantee schemes	-	-	-	-	-	-
4.5 Trade credit and advances	664	664	664	664	664	664
4.6 Other accounts payable	1,771	1,790	1,750	1,777	1,798	1,829
4.7 Special drawing rights (Net incurrence of liabilities)	1,383	1,380	1,329	1,344	1,375	1,397
International investment position - Net	(80,757)	(84,577)	(89,642)	(94,514)	(99,480)	(103,178)

Notes: International Investment Position of Pakistan as per Balance of Payments and International Investment Position Manual - Sixth Edition (BPM6) is being introduced from 2014Q1.

Archive Link: <http://www.sbp.org.pk/ecodata/Invest-BPM6.xls>
<http://www.sbp.org.pk/ecodata/Invest-BPM5.xls>

4.11 Gold and Foreign Exchange Reserves

(Million US Dollars)

End Period	Foreign exchange reserves with														SBP and Scheduled Banks	
	SBP						Scheduled Banks									
							Deposits				Utilizations				Total Banks' Reserves (7+8+9 -10-11- 12)**	Net Reserves With Banks (7-10)
	Gold ^a	SDRs	Cash Foreign Currency	Nostro ¹	Total SBP Resrves (2+3 +4)**	Net Reserves with SBP (2+4)	FE-25 ²	Trade Nostro	Placement abroad (other than FE-25)	Trade Finance	FE-25 Placem- ents in Pakistan	Others	Total Reserve Assets** (1+5+13)	Total Liquid FX Reserv e (6+14)		
1	2	3	4	5	6	7	8	9	10	11	12	13	14	15	16	
FY 13	2,469	855	39	5,153	6,047	6,008	5,778	(655)	45	767	122	1,964	2,315	5,011	10,831	11,020
FY 14	2,726	830	75	8,267	9,173	9,098	6,684	(391)	116	1,640	99	2,161	2,509	5,044	14,407	14,141
FY 15	2,428	710	13	12,816	13,538	13,526	6,463	(278)	86	1,289	93	2,172	2,717	5,173	18,683	18,699
FY 16	2,739	645	49	17,497	18,192	18,143	6,323	(574)	3	1,367	74	1,702	2,608	4,956	23,539	23,098
FY 17	2,578	607	98	15,536	16,242	16,143	6,963	(232)	139	1,705	69	2,057	3,039	5,258	21,860	21,402
2016 Dec	2,405	634	108	17,638	18,380	18,272	6,417	(630)	41	1,487	79	1,795	2,469	4,930	23,253	23,202
2017 Jan	2,516	639	86	16,777	17,503	17,416	6,347	(415)	8	1,522	66	2,051	2,302	4,826	22,321	22,242
Feb	2,605	615	107	16,466	17,188	17,081	6,444	(547)	9	1,453	68	2,138	2,247	4,991	22,040	22,072
Mar	2,582	618	108	15,848	16,575	16,466	6,476	(577)	6	1,370	61	2,276	2,199	5,106	21,356	21,572
Apr	2,627	623	117	15,439	16,179	16,062	6,572	(581)	5	1,537	60	2,181	2,217	5,035	21,023	21,096
May	2,627	603	115	15,812	16,530	16,415	6,543	(486)	6	1,767	61	2,070	2,164	4,775	21,321	21,190
Jun	2,578	607	98	15,538	16,243	16,145	6,963	(214)	139	1,705	69	2,057	3,057	5,258	21,879	21,403
Jul	2,565	614	101	13,974	14,688	14,587	6,929	(328)	3	1,293	60	2,495	2,756	5,636	20,009	20,223
Aug	2,723	588	146	14,093	14,828	14,681	6,978	(567)	3	1,258	62	2,464	2,629	5,719	20,180	20,401
Sep	2,663	586	181	13,271	14,038	13,857	7,139	(774)	202	1,221	64	2,674	2,608	5,918	19,310	19,775
Oct	2,636	583	183	12,908	13,674	13,491	7,311	(495)	3	1,219	64	2,707	2,829	6,092	19,140	19,584
Nov	2,657	558	185	12,103	12,845	12,661	7,378	(440)	3	1,265	71	3,012	2,592	6,113	18,095	18,774
Dec ^P	2,691	560	222	13,547	14,329	14,107	7,295	(301)	2	1,225	50	2,878	2,844	6,070	19,864	20,177

* Excludes RBI Holding

** Compiled as per IMF Balance of Payments Manual Guidelines

1. Excludes FE-13/CRR, unsettled claims on India and includes sinking fund.

2. Includes FE-13/CRR.

4.12 Foreign Currency Deposits

(Million US Dollars)

DESCRIPTION	2016	2017											
	Dec	Jan	Feb	Mar	Apr	May	Jun	Jul	Aug	Sep	Oct	Nov	Dec
Foreign Currency Deposits													
A. FE-25 Deposits	6,417.1	6,347.5	6,443.8	6,476.2	6,494.5	6,542.5	6,962.8	6,929.0	6,977.9	7,139.2	7,311.2	7,377.8	7,294.7
1. Resident	5,970.6	5,917.8	5,965.7	6,014.3	6,033.8	6,009.7	6,514.0	6,398.5	6,536.5	6,691.0	6,856.2	6,923.3	6,851.2
i) Demand Deposits	2,155.2	2,073.5	2,046.7	2,068.1	2,023.8	2,113.5	2,476.5	2,368.1	2,354.5	2,405.2	2,417.3	2,427.7	2,500.7
ii) Savings Deposits	2,662.1	2,692.8	2,629.5	2,635.7	2,677.7	2,657.8	2,810.6	2,777.1	2,898.4	2,952.6	3,087.4	3,051.8	2,875.2
iii) Time Deposits	1,153.3	1,151.5	1,289.5	1,310.6	1,332.3	1,238.4	1,227.0	1,253.2	1,283.6	1,333.2	1,351.4	1,443.8	1,475.2
2. Non- Resident	446.4	429.6	478.1	461.9	460.6	532.8	448.7	530.5	441.4	448.1	455.0	454.5	443.5
i) Demand Deposits	189.7	152.6	181.6	192.0	198.5	189.1	200.5	168.3	196.6	201.6	186.2	190.4	172.7
ii) Savings Deposits	210.3	233.5	252.7	230.0	220.3	251.3	191.7	274.2	184.7	185.9	206.5	208.7	193.4
iii) Time Deposits	46.5	43.4	43.9	39.8	41.8	92.5	56.5	88.0	60.2	60.7	62.4	55.5	77.4
B. Old FCAs Deposits	16.2	16.0	15.9	15.9	14.0	13.9	13.9	13.9	13.8	13.8	13.8	13.6	13.6
1. Non- Resident	12.2	12.1	12.1	12.0	10.9	11.2	11.2	11.2	11.1	11.1	11.1	11.0	11.0
2. Resident	4.0	3.9	3.9	3.9	3.1	2.7	2.7	2.7	2.7	2.7	2.7	2.7	2.7
Total	6,433.2	6,363.5	6,459.8	6,492.1	6,508.5	6,556.4	6,976.7	6,942.9	6,991.7	7,153.0	7,325.0	7,391.5	7,308.3
FE-25 Deposits Utilization													
1. Financing	1,486.6	1,521.5	1,452.7	1,370.3	1,537.1	1,767.1	1,704.7	1,293.4	1,258.4	1,221.2	1,218.9	1,264.8	1,224.5
i) Exports Financing	513.3	552.0	540.6	485.4	470.7	447.5	424.0	385.3	377.5	348.2	367.8	355.8	351.2
a) Pre-Shipment	314.4	355.9	348.3	298.2	273.3	260.6	239.5	178.5	167.7	154.0	159.2	146.1	141.7
b) Post-Shipment	199.0	196.1	192.2	187.2	197.4	186.8	184.4	206.8	209.9	194.2	208.6	209.7	209.4
ii) Import Financing	973.3	969.5	912.2	884.9	1,066.4	1,319.7	1,280.7	908.2	880.9	873.0	851.0	909.0	873.4
2. Placements	1,809.3	1,751.0	1,761.6	1,679.5	1,688.4	1,668.3	2,031.4	1,842.1	1,902.3	1,923.8	2,066.7	2,007.2	2,049.9
i) With State Bank of Pakistan	1,252.7	1,229.5	1,245.1	1,248.0	1,251.8	1,257.8	1,287.8	1,328.5	1,342.2	1,381.9	1,387.8	1,430.5	1,409.4
a) CRR ¹	329.6	324.0	327.8	328.7	329.9	331.3	338.9	349.3	353.2	363.4	365.3	376.5	371.4
b) SCRR ²	923.0	905.5	917.2	919.3	922.0	926.5	949.0	979.2	989.0	1,018.5	1,022.5	1,054.0	1,038.0
ii) With Banks	556.7	521.5	516.5	431.5	436.5	410.5	743.6	513.6	560.1	541.9	678.9	576.8	640.5
a) Within Pakistan	78.9	66.1	68.0	60.7	60.2	60.5	68.7	59.9	62.3	63.7	64.0	71.4	49.5
b) Outside Pakistan	477.8	455.4	448.5	370.8	376.4	350.0	674.9	453.7	497.8	478.2	614.9	505.3	591.0
3. Balances	1,326.5	1,024.0	1,091.6	1,150.9	1,089.0	1,036.9	1,169.5	1,298.6	1,352.9	1,319.9	1,318.7	1,093.4	1,142.6
i) Balance held abroad	1,078.8	772.5	836.3	888.4	820.4	776.2	916.5	1,037.4	1,062.3	1,049.3	1,045.0	828.5	838.0
ii) Cash in hand	247.6	251.6	255.3	262.5	268.6	260.7	252.9	261.2	290.6	270.5	273.8	265.0	304.6
4. Others	1,794.7	2,050.9	2,137.9	2,275.6	2,180.0	2,070.2	2,057.2	2,494.9	2,464.3	2,674.3	2,706.9	3,012.3	2,877.7

Note: The data relates to last working day of the month.

1. Cash Reserve Requirement

2. Special Cash Reserve Requirement

Archive Link: <http://www.sbp.org.pk/ecodata/fe25.xls>

4.13 Foreign Investment in Pakistan by Country

(Million US Dollars)

Sr.	Country	Dec-17 ^P			Jul-Dec FY18 ^P			Jul-Dec FY 17 ^R		
		Direct Investment (Net)	Portfolio Investment (Net)	Total	Direct Investment (Net)	Portfolio Investment (Net)	Total	Direct Investment (Net)	Portfolio Investment (Net)	Total
I	Foreign Private Investment	197.4	(32.3)	165.1	1,381.7	(128.4)	1,253.3	1,421.5	(254.4)	1,167.1
1	Argentina	..	-	-	..	-	-	-
2	Australia	0.5	2.2	2.7	7.1	14.5	21.5	0.5	(12.4)	(11.9)
3	Austria	3.3	-	3.3	13.0	-	13.0	16.7	-	16.7
4	Bahrain	1.1	..	1.1	6.4	(.)	6.4	(14.8)	(5.6)	(20.4)
5	Bangladesh	-	-	-	-	-	-	..	(0.3)	(0.3)
6	Brunei	-	-	-	-	-	-	3.3	-	3.3
7	Canada	(0.3)	0.5	0.3	(0.8)	(5.1)	(5.9)	0.4	9.5	9.9
8	China	128.4	(.)	128.4	969.1	3.2	972.3	393.1	7.1	400.1
9	Denmark	..	(0.3)	(0.3)	..	(0.3)	(0.3)	0.2	-	0.2
10	Egypt	1.0	0.4	1.5	4.2	(173.2)	(169.0)	(2.1)	-	(2.1)
11	Finland	0.1	-	0.1	(0.4)	(1.5)	(1.9)	(2.6)	(2.7)	(5.2)
12	France	0.6	(1.9)	(1.3)	21.9	1.1	23.0	18.2	(0.1)	18.1
13	Germany	1.5	0.4	1.9	17.4	1.8	19.1	11.2	(0.6)	10.6
14	Hongkong	0.1	(31.6)	(31.5)	1.2	(168.9)	(167.7)	..	26.7	26.8
15	Indonesia	-	-	-	..	-	..	-	-	-
16	Iran	..	-	..	0.1	-	0.1	1.1	-	1.1
17	Ireland	-	(3.9)	(3.9)	-	20.6	20.6	..	5.6	5.6
18	Italy	3.7	-	3.7	21.7	..	21.7	34.0	..	34.0
19	Japan	3.3	..	3.3	25.1	(0.9)	24.2	26.9	1.5	28.4
20	Korea (South)	0.4	(0.2)	0.2	2.2	1.6	3.9	8.5	-	8.5
21	Kuwait	(4.0)	(0.6)	(4.6)	(7.2)	(2.8)	(10.0)	13.9	(1.2)	12.7
22	Lebanon	1.0	-	1.0	5.1	-	5.1	3.3	-	3.3
23	Libya	0.3	-	0.3	1.3	-	1.3	0.7	-	0.7
24	Luxembourg	(0.1)	(27.3)	(27.4)	12.3	(139.1)	(126.9)	0.3	(113.5)	(113.2)
25	Malaysia	0.9	-	0.9	117.2	-	117.2	13.1	-	13.1
26	Netherlands	0.4	(0.4)	..	33.8	(3.0)	30.8	455.2	1.5	456.7
27	NewZealand	-	-	0.1	0.1	-	-	-
28	Norway	..	-	..	(124.8)	-	(124.8)	(15.6)	(4.8)	(20.5)
29	Oman	(0.3)	0.5	0.1	(1.3)	0.6	(0.8)	0.2	..	0.2
30	Philippines	-	-	-	-	-	-	0.7	(1.8)	(1.1)
31	Poland	0.9	-	0.9	3.6	-	3.6	4.4	-	4.4
32	Portugal	-	-	-	-	-	-	-	-	-
33	Qatar	(0.4)	..	(0.3)	(1.8)	0.9	(0.9)	(1.7)	..	(1.7)
34	Saudi Arabia	1.4	(.)	1.4	5.8	(1.2)	4.6	7.9	0.6	8.5
35	Singapore	1.4	(0.8)	0.5	16.7	(5.9)	10.8	26.7	16.3	43.0
36	South Africa	(11.1)	-	(11.1)	(11.1)	-	(11.1)	-	-	-
37	Sri Lanka	-	-	-	(.)	-	(.)	1.1	-	1.1
38	Sweden	0.7	1.2	1.9	0.8	2.1	2.9	7.1	(24.9)	(17.7)
39	Switzerland	7.1	(0.2)	6.9	28.5	0.6	29.1	57.5	(22.8)	34.7
40	Thailand	-	-	-	0.1	-	0.1	5.0	-	5.0
41	Turkey	3.0	-	3.0	8.7	-	8.7	130.7	-	130.7
42	U.A.E	2.5	(0.8)	1.7	14.5	(10.4)	4.1	47.3	(15.1)	32.2
43	United Kingdom	17.8	(17.6)	0.2	77.1	(109.0)	(31.9)	106.9	(73.3)	33.6
44	United States of America	19.7	38.3	57.9	63.5	466.4	530.0	3.4	(72.1)	(68.7)
45	Others	12.3	9.8	22.1	50.7	(20.5)	30.1	58.6	28.0	86.6
II	Foreign Public Investment	-	2,500.0	2,500.0	-	2,450.3	2,450.3	-	998.1	998.1
	Debt Securities	-	2,500.0	2,500.0	-	2,450.3	2,450.3	-	998.1	998.1
	Total	197.4	2,467.7	2,665.0	1,381.7	2,321.9	3,703.6	1,421.5	743.7	2,165.2

Archive Link: http://www.sbp.org.pk/ecodata/NIFP_Arch/index.asp

4.14 Foreign Direct Investment Classified by Economic Groups

(Million US Dollars)

Sr.	SECTOR	Dec-17 ^P			Jul-Dec FY18 ^P			Jul-Dec FY17 ^R		
		Inflow	Outflow	Net FDI	Inflow	Outflow	Net FDI	Inflow	Outflow	Net FDI
1	Food	2.2	1.5	0.8	24.8	5.8	19.0	499.8	0.6	499.2
2	Food Packaging	4.9	7.4	(2.4)	0.6	0.3	0.3
3	Beverages	-	0.8	(0.8)	-	3.2	(3.2)	1.9	11.4	(9.5)
4	Tobacco & Cigarettes	2.4	-	2.4	13.0	-	13.0	61.3	6.4	54.9
5	Sugar	0.3	..	0.3	1.1	..	1.1	1.4	..	1.4
6	Textiles	2.7	0.2	2.5	14.6	0.7	13.9	9.7	0.1	9.6
7	Paper & Pulp	-	..	(..)	0.3	..	0.3	0.8	-	0.8
8	Leather & Leather Products	0.4	-	0.4	1.5	0.4	1.0
9	Rubber & Rubber Products	..	-	..	0.1	-	0.1	0.4	0.4	(..)
10	Chemicals	3.0	1.1	1.9	19.2	3.6	15.6	37.1	25.5	11.6
11	Petro Chemicals	0.1	-	0.1	1.4	-	1.4	0.1	-	0.1
12	Petroleum Refining	2.1	0.1	1.9	21.5	0.6	20.9	86.1	2.0	84.1
13	Mining & Quarrying	-	0.2	(0.2)	..	0.7	(0.7)	3.6	-	3.6
14	Oil & Gas Explorations	26.2	-	26.2	106.2	1.5	104.7	90.7	10.3	80.4
	<i>of which Privatization proceeds</i>	-	-	-	-	-	-	-	-	-
15	Pharmaceuticals & OTC Products	1.6	0.5	1.1	6.8	2.0	4.8	11.9	25.2	(13.3)
16	Cosmetics	..	0.2	(0.2)	0.2	0.2	(0.1)	1.2	1.5	(0.3)
17	Fertilizers	-	-	-	-	-	-	-	-	-
18	Cement	5.0	0.1	4.9	20.7	0.2	20.4	18.7	-	18.7
19	Ceramics	-	..	(..)	-	0.1	(0.1)	-	..	(..)
20	Basic Metals	-	-	-	4.7	-	4.7	1.6	-	1.6
21	Metal Products	0.1	0.5	(0.4)	0.7	3.8	(3.1)	0.7	2.3	(1.6)
22	Machinery other than Electrical	-	-	-	1.8	-	1.8	20.7	-	20.7
23	Electrical Machinery	6.0	-	6.0	13.2	2.3	10.9	0.2	1.0	(0.8)
24	Electronics	16.8	-	16.8	40.5	8.1	32.5	148.8	10.0	138.8
	I) Consumer/Household	15.5	-	15.5	33.6	8.1	25.6	147.6	10.0	137.6
	II) Industrial	1.3	-	1.3	6.9	-	6.9	1.2	-	1.2
25	Transport Equipment(Automobiles)	4.6	1.8	2.8	26.4	7.3	19.1	34.1	9.7	24.3
	I) Motorcycles	-	-	-	0.1	-	0.1	-	-	-
	II) Cars	4.6	-	4.6	26.0	-	26.0	29.5	-	29.5
	III) Buses,Trucks,Vans & Trail	..	1.8	(1.8)	0.3	7.3	(7.0)	4.6	9.7	(5.1)
26	Power	28.5	3.5	25.0	567.9	32.6	535.3	375.4	36.2	339.2
	I) Thermal	2.6	1.5	1.1	35.3	6.0	29.4	91.4	34.4	57.0
	<i>of which Privatization proceeds</i>	-	-	-	-	-	-	-	-	-
	II) Hydel	13.9	2.0	11.9	111.7	20.6	91.1	116.2	1.8	114.4
	III) Coal	12.0	-	12.0	420.9	6.0	414.8	167.9	-	167.9
27	Construction	78.7	0.1	78.6	355.6	5.8	349.8	87.0	3.2	83.8
28	Trade	5.9	12.6	(6.7)	63.8	17.2	46.6	21.4	10.4	11.0
29	Transport	3.7	1.6	2.1	23.9	6.4	17.5	18.2	2.8	15.4
30	Tourism	0.5	-	0.5	2.0	-	2.0	-	25.7	(25.7)
31	Storage Facilities	..	-	..	8.2	-	8.2	0.8	-	0.8
32	Communications	4.6	6.2	(1.6)	129.6	144.1	(14.6)	41.2	84.4	(43.2)
	1) Telecommunications	1.3	5.9	(4.6)	119.6	142.8	(23.2)	32.4	84.1	(51.6)
	<i>of which Privatization proceeds</i>	-	-	-	-	-	-	-	-	-
	2) Information Technology	3.3	0.3	3.0	10.0	1.4	8.6	8.5	0.3	8.2
	I) Software Development	0.6	..	0.5	3.7	0.1	3.6	2.8	0.2	2.6
	II) Hardware Development	0.4	-	0.4	0.4	0.1	0.3	0.1	..	0.1
	III) I.T.Service	2.3	0.2	2.1	5.9	1.2	4.7	5.6	..	5.6
	3) Postal & Courier Services	-	-	-	-	-	-	0.3	-	0.3
33	Financial Business	37.6	6.1	31.5	186.8	29.8	157.1	151.3	37.4	113.9
	<i>of which Privatization proceeds</i>	-	-	-	-	-	-	-	-	-
34	Social Services	..	-	..	0.1	4.0	(3.9)	0.2	-	0.2
35	Personal Services	5.3	1.6	3.7	17.6	14.8	2.8	14.7	1.9	12.7
36	Others	4.3	6.6	(2.3)	42.4	37.0	5.4	23.3	34.7	(11.4)
	TOTAL	242.6	45.2	197.4	1,721.4	339.7	1,381.7	1,764.9	343.4	1,421.5
	<i>TOTAL without Privatization proceeds</i>	<i>242.6</i>	<i>45.2</i>	<i>197.4</i>	<i>1,721.4</i>	<i>339.7</i>	<i>1,381.7</i>	<i>1,764.9</i>	<i>343.4</i>	<i>1,421.5</i>

Archive Link: http://www.sbn.org.nk/ecodata/NIFP_Arch/index.asp

4.15 Balance of Trade

(a) State Bank of Pakistan

(Million US Dollars)

PERIOD	Exports (BOP)		Period Growth Rate %	Imports (BOP)		Period Growth Rate %	Balance of Trade	
	Value (a)	Cumulative (b)		Value (c)	Cumulative (d)		a-c	b-d
2012-13	24,802	--	0.3	40,157	--	(0.5)	(15,355)	--
2013-14	25,078	--	1.1	41,668	--	3.8	(16,590)	--
2014-15	24,090	--	(3.9)	41,357	--	(0.7)	(17,267)	--
2015-16	21,972	--	(8.8)	41,255	--	(0.2)	(19,283)	--
2016-17 ^P	21,938	--	(0.2)	48,506	--	17.6	(26,568)	--
2016								
Nov	1,860	8,738	(1.1)	3,954	17,730	7.6	(2,094)	(8,992)
Dec	1,891	10,629	(1.4)	4,241	21,971	6.7	(2,350)	(11,342)
2017 ^P								
Jan	1,811	12,440	(0.3)	4,328	26,299	9.9	(2,517)	(13,859)
Feb	1,791	14,231	(0.8)	4,102	30,401	12.5	(2,311)	(16,170)
Mar	2,075	16,306	(0.1)	4,303	34,704	14.4	(2,228)	(18,398)
Apr	1,784	18,090	(0.3)	4,100	38,804	15.8	(2,316)	(20,714)
May	1,963	20,053	(0.3)	4,622	43,426	16.6	(2,659)	(23,373)
Jun	1,885	21,938	(0.2)	5,080	48,506	17.6	(3,195)	(26,568)
Jul ^R	1,821	1,821	20.8	4,644	4,644	48.8	(2,823)	(2,823)
Aug ^R	2,098	3,919	16.5	4,328	8,972	27.5	(2,230)	(5,053)
Sep ^R	1,745	5,664	12.1	3,964	12,936	25.4	(2,219)	(7,272)
Oct	1,971	7,635	11.0	4,446	17,382	26.2	(2,475)	(9,747)
Nov ^R	2,148	9,783	12.0	4,480	21,862	23.3	(2,332)	(12,079)
Dec	1,993	11,776	10.8	4,232	26,094	18.8	(2,239)	(14,318)

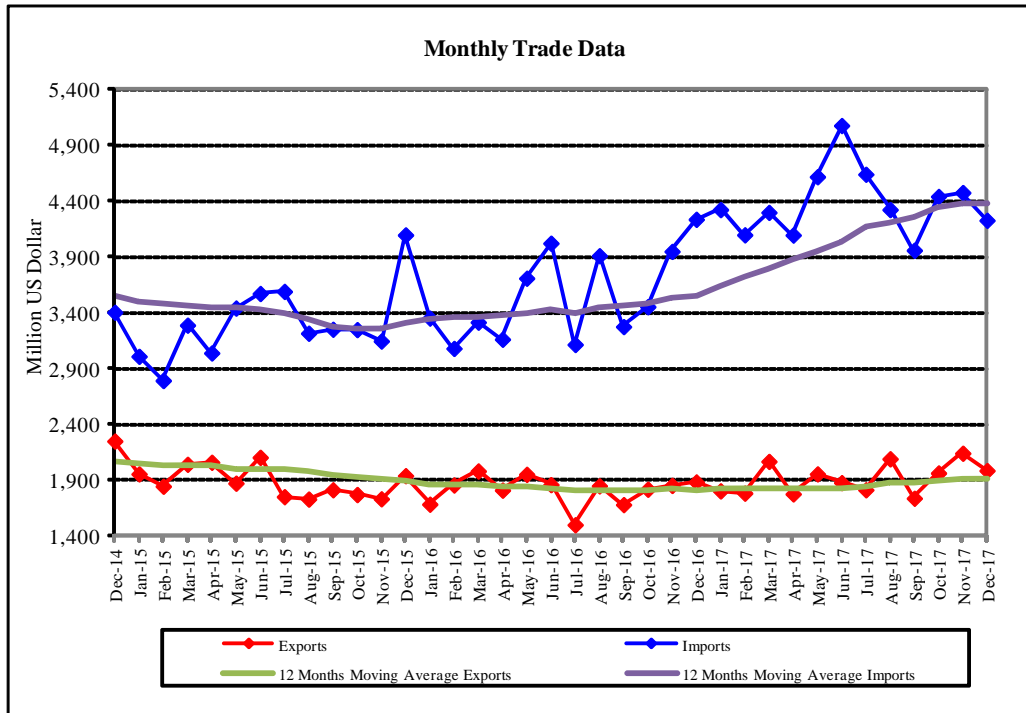
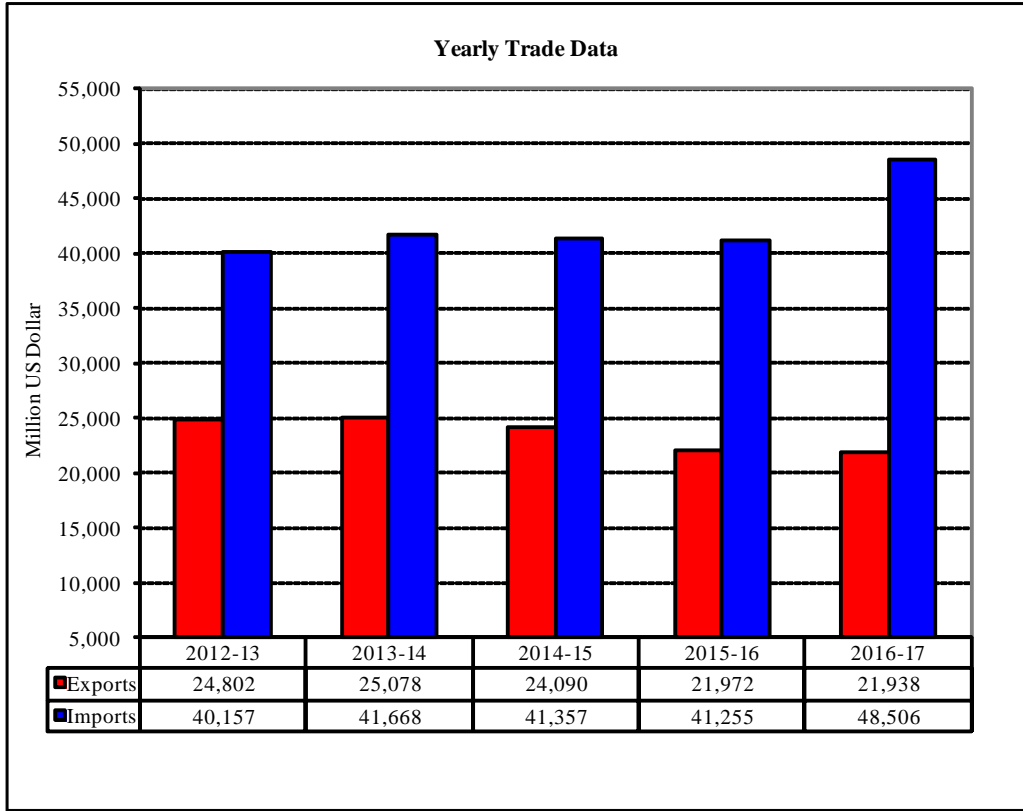
Trade data compiled by Pakistan Bureau of Statistics and State Bank of Pakistan may differ from each other due to the following reasons:-

- 1- The SBP Exports (BOP) & Imports (BOP) include general merchandise, repairs on goods and goods procured on parts by carriers. The SBP export and imports are based on realization of export proceeds and import payments made through the banking channel. Information on exports and imports unaccounted for by the banking channel are collected from the relevant sources and added to the exports/imports data reported by banks to arrive at the overall exports and imports. The trade data of PBS is, on the other hand, based on physical movement of goods crossing the custom boundaries of Pakistan.
- 2- The SBP data is gendered merchandise based on Balance of Payment Manual (BPM6), whereas PBS data is on Carriage Insurance & Freight (c. i. f.) basis.
- 3- Cumulative figures are of Financial Year (Jul-Jun).

Archive Link: http://www.sbp.org.pk/ecodata/exp_import_BOP_Arch.xls

Balance of Trade

(a) State Bank of Pakistan



4.15 Balance of Trade

(b) Pakistan Bureau of Statistics

(Million US Dollars)

PERIOD	Exports (a)	Re-exports	Cumulative (b)	Period Growth Rate %	Imports (c)	Re- imports	Cumulative (d)	Period Growth Rate %	Balance of Trade ³		
									a-c	b-d	
2012-13	24,460	285	--	--	44,950	-	--	--	(20,204)	--	
2013-14	25,110	161	--	--	45,073	18	--	--	(19,820)	--	
2014-15	23,667	199	--	--	45,826	207	--	--	(22,167)	--	
2015-16	20,786	178	--	--	44,685	200	--	--	(23,921)	--	
2016-17	20,422	353	--	--	52,910	212	--	--	(32,347)	--	
2016	Nov	1,757	20	8,250	(4.05)	4,205	16	19,950	8.25	(2,445)	(11,700)
	Dec	1,722	15	9,987	(3.95)	4,460	18	24,427	9.71	(2,741)	(14,440)
2017	Jan	1,775	68	11,830	(2.83)	4,697	19	29,143	13.24	(2,873)	(17,314)
	Feb	1,633	41	13,504	(3.39)	4,372	19	33,534	15.51	(2,716)	(20,030)
	Mar	1,794	15	15,313	(2.63)	4,977	22	38,533	18.22	(3,190)	(23,220)
	Apr	1,798	2	17,113	(1.99)	4,963	17	43,512	19.44	(3,179)	(26,399)
	May	1,620	17	18,750	(2.83)	5,066	18	48,596	20.20	(3,446)	(29,845)
	Jun	1,906	118	20,775	(0.90)	4,512	15	53,123	18.35	(2,502)	(32,347)
	Jul	1,627	25	1,627	9.47	4,809	20	4,809	35.37	(3,176)	(3,182)
	Aug	1,860	31	3,487	10.36	4,923	20	9,732	23.59	(3,052)	(6,244)
	Sep ^P	1,675	-	5,162	9.61	4,473	-	14,205	21.17	(2,798)	(9,043)
	Oct ^P	1,888	-	7,051	8.91	4,929	-	19,134	21.65	(3,040)	(12,083)
	Nov ^P	1,974	-	9,025	9.39	4,898	-	24,031	20.46	(2,923)	(15,006)
	Dec ^P	1,977	-	11,002	10.16	4,910	-	28,941	18.48	(2,933)	(17,939)

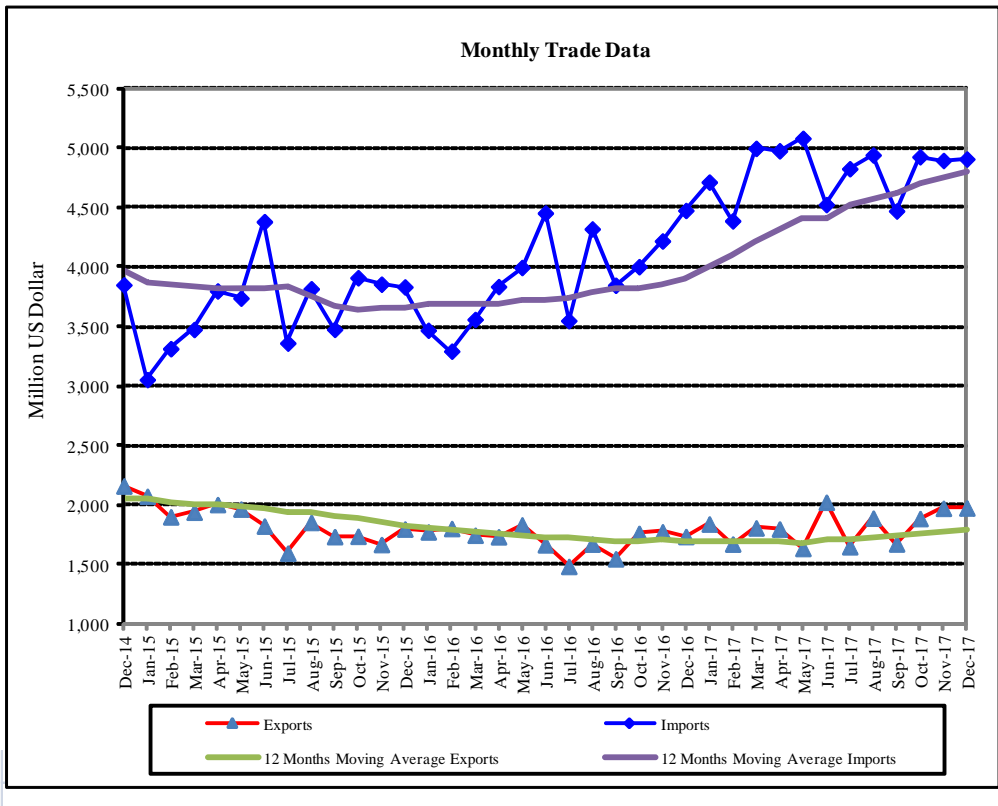
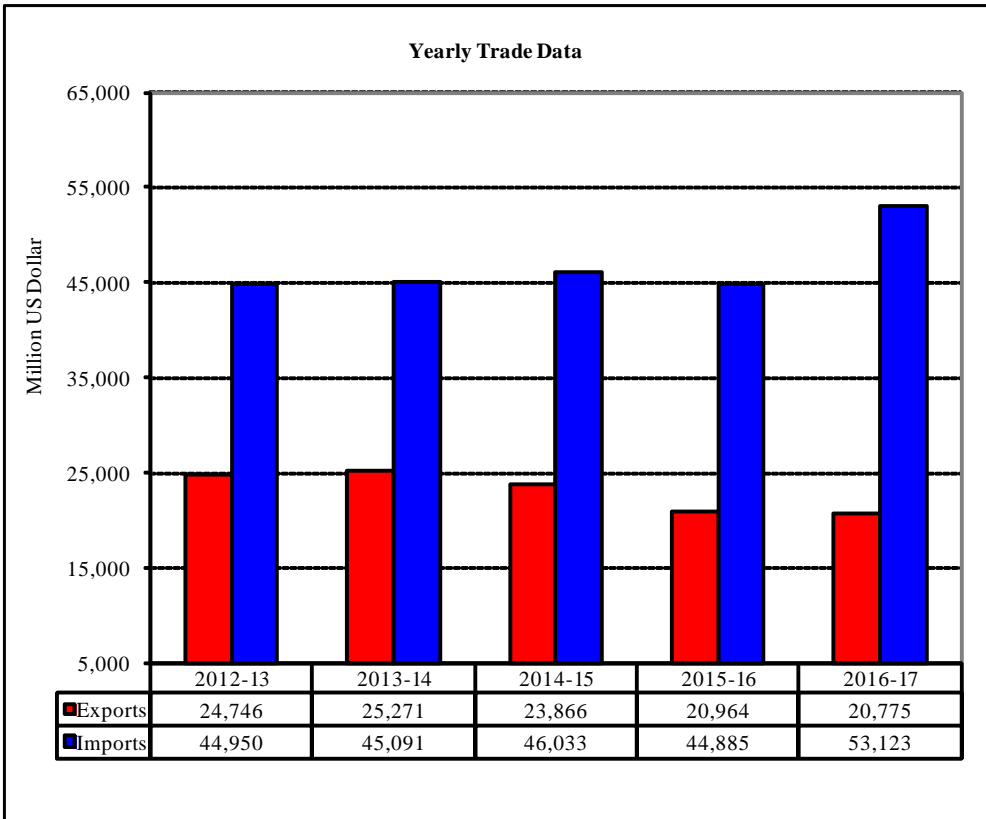
Source : Pakistan Bureau of Statistics

Trade data compiled by Pakistan Bureau of Statistics and State Bank of Pakistan may differ from each other due to the following reasons:-

1. The SBP Exports (BOP) & Imports (BOP) include general merchandise, repairs on goods and goods procured on parts by carriers. The SBP export and imports are based on realization of export proceeds and import payments made through the banking channel. Information on exports and imports unaccounted for by the banking channel are collected from the relevant sources and added to the exports/imports data reported by banks to arrive at the overall exports and imports. The trade data of PBS is, on the other hand, based on physical movement of goods crossing the custom boundaries of Pakistan.
- 2- The SBP data is gendered merchandise based on Balance of Payment Manual (BPM6), whereas PBS data is on Carriage Insurance & Freight (c. i. f.) basis.
3. Balance of Trade = Exports + Re-exports - Imports - Re-imports

Balance of Trade

(b) Pakistan Bureau of Statistics



4.16 Exports By Selected Commodities

(a) State Bank of Pakistan

(Thousand US Dollars)

COMMODITIES	2015-16	2016-17 ^R	2016 ^R		2017 ^P				
			Nov	Dec	Aug ^R	Sep ^R	Oct	Nov ^R	Dec
A. Food Group	3,722,489	3,611,952	325,949	337,942	254,774	232,441	292,372	407,750	427,940
1 Rice	1,852,708	1,575,061	160,442	171,899	114,906	98,389	115,069	168,457	199,565
A) Basmati	584,415	514,282	40,417	31,816	53,031	42,691	36,495	45,567	51,309
B) Others	1,268,293	1,060,778	120,025	140,083	61,875	55,698	78,575	122,890	148,256
2 Fish & Fish Preparations	328,430	391,103	47,234	36,149	22,201	32,487	44,095	48,823	40,782
3 Fruits	329,641	308,304	16,739	21,422	25,871	19,094	15,197	21,435	41,682
4 Vegetables/Leguminous vegetable	149,527	107,082	7,476	9,550	9,801	7,934	8,616	7,051	17,134
5 Tobacco	7,847	18,636	712	2,281	67	532	5,079	294	3,748
6 Wheat	369	2,937	456	94	56	-	-	-	-
7 Spices	82,741	91,294	7,495	6,972	4,235	4,634	7,075	8,898	6,255
8 Oil Seeds, Nuts and Kernals	19,208	31,115	2,899	2,477	2,562	5,034	5,033	3,697	2,936
9 Sugar	110,069	198,295	-	-	8,594	10,452	31,060	86,511	50,368
10 Meat and Meat Preparations	238,142	223,384	19,405	20,316	18,695	14,168	17,063	18,628	18,046
11 All Other Food Items	603,806	664,741	63,090	66,783	47,785	39,715	44,086	43,958	47,424
B. Textile Group	12,756,277	12,453,506	1,037,731	1,003,063	1,166,544	1,072,955	1,164,351	1,109,128	1,037,777
12 Raw Cotton	77,173	40,521	8,809	3,905	1,809	13,096	17,119	11,409	3,378
13 Cotton Yarn	1,266,127	1,140,213	97,580	90,925	106,108	97,245	111,314	97,010	104,091
14 Cotton Cloth	2,331,587	2,122,525	185,970	180,577	181,703	169,819	182,444	178,886	164,079
15 Cotton Carded or Combed	83,072	51,968	4,978	6,005	692	22	65	251	90
16 Yarn Other than Cotton Yarn	28,275	20,712	1,684	1,929	2,189	2,409	3,829	1,668	2,194
17 Knitwear	2,309,248	2,333,639	186,919	174,762	237,392	205,973	228,343	213,947	193,757
18 Bed Wear	2,126,360	2,155,904	182,493	176,281	206,355	196,427	220,911	202,091	185,539
19 Towels	721,054	678,577	55,742	56,479	59,293	57,061	60,009	64,575	56,251
20 Tents, Canvas & Tarpaulin	108,338	147,107	15,429	16,978	6,393	3,914	6,165	9,237	8,406
21 Readymade Garments	2,156,033	2,279,250	173,640	173,973	221,866	191,940	205,598	195,606	190,416
22 Art, Silk & Synthetic Textile	275,540	262,574	22,066	22,557	24,410	22,929	24,122	24,976	28,492
23 Makeup Articles (incl. Other Tex)	700,830	671,154	54,861	53,840	69,028	64,450	56,522	65,806	62,087
24 Other Textile Materials	572,638	549,363	47,561	44,850	49,306	47,669	47,911	43,666	38,998
C. Petroleum Group	450,201	410,718	34,758	33,852	50,116	43,556	57,550	52,472	39,089
25 Petroleum Crude	464	6,964	-	-	-	-	-	-	-
26 Petroleum Products	107,758	83,165	8,643	7,289	16,843	10,789	29,934	32,939	22,446
27 Solid Fuel including Naphtha	341,980	320,590	26,115	26,564	33,273	32,767	27,616	19,533	16,643
D. Other Manufacture	3,804,506	3,654,627	297,222	285,546	387,714	332,965	333,240	359,569	317,120
28 Carpets, Rugs & Mats	103,834	93,646	10,100	9,333	7,195	6,115	6,876	7,770	7,191
29.Sports Goods	539,115	551,472	44,094	45,652	49,963	38,006	47,399	45,613	43,382
30 Leather Tanned	418,527	378,826	31,473	30,405	32,439	27,285	27,234	31,673	25,115
31.Leaner Manufactures	487,965	486,589	39,497	39,183	54,948	52,720	49,291	55,087	46,154
32.Footwear	98,338	89,777	6,269	6,380	10,626	8,931	6,720	5,663	6,887
33 Surgical Goods & Medical Instr.	423,680	395,870	29,531	32,298	44,137	30,937	33,797	35,014	38,554
34 Cutlery	55,111	60,240	4,555	5,040	5,599	5,109	5,917	6,188	5,394
35 Onyx Manufactured	11,595	8,341	806	766	842	550	689	333	569
36.Chemical and Pharmaceutica Products	1,052,316	1,110,211	89,522	78,341	135,654	122,677	114,324	130,398	110,782
37.Engineering Goods	214,171	182,612	12,511	12,240	18,881	14,332	16,281	19,133	16,492
38 Gems	5,099	6,826	955	405	363	429	661	507	511
39 Jewellery	7,380	7,602	1,327	567	567	386	686	394	492
40 Furniture	5,859	3,613	186	295	629	153	287	205	298
41 Molasses	8,440	9,075	5	822	1,017	4,509	506	423	415
42 Handicrafts	220	92	45	1	137	4	-	-	-
43 Cement	346,952	242,385	24,548	21,612	22,426	19,363	20,237	18,537	12,476
44 Guar and Guar Products	25,903	27,450	1,800	2,202	2,291	1,458	2,337	2,633	2,410
E. All Others	1,083,919	1,218,618	108,103	111,342	120,975	83,920	117,262	137,534	119,410
Export Receipts (Banks)	21,817,392	21,349,421	1,803,763	1,771,745	1,980,124	1,765,837	1,964,774	2,066,454	1,941,336
F.Other Exports	614,514	784,620	74,697	136,405	139,741	(3,493)	28,091	98,890	69,008
G. Less: Freight and insurance	459,909	196,042	18,460	17,150	21,865	17,344	21,865	17,344	17,344
Total Export BOP	21,971,996	21,938,000	1,860,000	1,891,000	2,098,000	1,745,000	1,971,000	2,148,000	1,993,000

Note: Other exports includes land borne export, export of samples, export processing zone, outstanding export bills and refund & rebate, repairs on goods, goods procured on ports by carriers less freight on exports.

Archive Link: [http://www.sbp.org.pk/ecodata/Exports-\(BOP\)-Commodities.xls](http://www.sbp.org.pk/ecodata/Exports-(BOP)-Commodities.xls)

4.16 Exports By Selected Commodities

(b) Pakistan Bureau of Statistics

(Thousand US Dollars)

COMMODITIES	2015-16	2016-17	2016		2017				
			Nov	Dec	Aug	Sep ^P	Oct ^P	Nov ^P	Dec ^P
A. Food Group	3,989,197	3,714,614	342,665	334,860	262,852	230,070	330,229	418,697	439,285
1 Rice	1,860,497	1,607,013	165,742	155,496	116,176	96,306	137,423	186,707	198,883
a) Basmati	447,418	450,908	26,935	33,796	39,451	28,190	25,423	30,855	28,078
b) Others	1,413,079	1,156,106	138,807	121,700	76,725	68,116	112,000	155,852	170,805
2 Fish & Fish Preparations	324,869	393,664	41,204	27,440	22,786	40,097	46,137	44,133	34,168
3 Fruits	427,025	381,004	26,836	50,049	30,175	18,819	28,033	26,205	57,563
4 Vegetables	213,204	186,138	11,025	12,399	10,363	5,915	7,120	10,687	18,299
5 Leguminous Vegetables	-	528	-	528	-	-	-	-	-
6 Tobacco	10,974	14,815	809	253	158	684	1,168	11,418	6,467
7 Wheat	159	1,180	-	-	-	-	-	-	-
8 Spices	76,678	84,125	8,372	7,168	4,514	5,450	8,515	7,232	7,360
9 Oil seeds, Nuts and Kernals	30,150	47,186	6,639	3,258	3,805	4,121	3,607	4,973	4,168
10 Sugar	132,284	161,038	-	-	4,726	9,685	18,920	67,529	52,761
11 Meat& Meat preparations	269,093	221,948	16,827	18,121	14,166	14,261	18,455	18,375	16,367
12 All other Food Items	644,264	615,974	65,211	60,148	55,983	34,732	60,851	41,438	43,249
B. Textile Group	12,447,290	12,453,584	1,042,573	1,028,216	1,172,187	1,078,023	1,132,848	1,120,265	1,132,595
13 Raw Cotton	76,631	43,571	4,498	2,372	7,708	20,927	12,939	7,631	3,100
14 Cotton Yarn	1,264,922	1,240,193	129,059	107,335	101,388	110,529	121,076	111,368	107,841
15 Cotton Cloth	2,213,859	2,134,625	166,994	168,712	189,074	179,433	186,455	172,775	179,038
16 Cotton Carded or Combed	146	235	-	-	-	-	-	9	-
17 Yarn Other than Cotton Yarn	32,751	24,090	1,685	1,490	3,851	2,659	2,744	2,468	2,254
18 Knitwear	2,363,621	2,370,692	191,280	197,086	245,423	208,392	225,320	225,773	236,482
19 Bed Wear	2,019,917	2,124,655	172,010	170,064	213,673	182,642	188,050	192,098	176,987
20 Towels	802,968	794,115	69,337	62,212	65,531	63,435	67,848	69,133	63,838
21 Tent, Canvas & Tarpaulin	85,081	134,953	17,212	17,128	5,896	5,403	7,443	11,750	14,361
22 Readymade Garments	2,195,217	2,320,306	188,547	211,631	205,982	189,440	195,777	215,465	229,914
23 Art, Silk & Synthetic Textile	287,895	189,723	17,106	3,566	26,940	24,516	25,926	23,234	23,966
24 Made up Articles (Ex.towels & bed)	628,257	641,236	57,072	55,852	61,550	54,405	58,687	59,784	57,490
25 Other Textile Materials	476,025	435,190	27,773	30,768	45,171	36,242	40,583	28,777	37,324
C. Petroleum Group & Coal	160,713	189,223	8,754	28,004	9,077	33,773	22,651	38,135	28,832
26 Petroleum Crude	104,594	76,972	-	16,397	-	17,100	-	19,694	22,438
27 Petroleum Products (Exl. Naphtha)	55,015	70,756	7,284	6,547	3,059	13,426	14,458	18,441	6,394
28 Petroleum Top Naphtha	1,086	41,495	1,470	5,060	6,018	3,247	8,193	-	-
29 Solid Fuels (Coal)	18	-	-	-	-	-	-	-	-
D. Other Manufactures Group	3,234,573	3,087,336	259,690	242,665	317,379	243,382	294,249	286,543	278,285
30 Carpets Rugs & Mats	97,687	78,506	8,025	7,243	6,501	7,112	6,332	8,115	6,661
31 Sports Goods	324,736	303,360	23,484	29,149	28,924	23,025	25,347	25,209	25,916
32 Leather Tanned	362,753	345,650	30,445	25,760	28,593	23,034	27,948	29,299	27,351
33 Leather Manufactures	526,180	489,416	43,917	45,505	47,016	43,135	43,014	44,247	45,549
34 Footwear	109,899	95,663	6,110	8,616	10,538	5,137	5,677	8,142	10,680
35 Surgical Goods & Medical Instr.	358,770	339,667	30,306	26,590	31,746	29,567	29,884	35,829	32,586
36 Cutlery	80,410	82,011	6,727	7,399	8,303	6,817	7,860	7,906	7,351
37 Onyx Manufactured	7,797	4,864	575	249	523	323	361	475	275
38 Chemicals and Pharm.Products	804,371	880,116	67,145	58,689	102,483	70,262	106,000	88,086	85,522
39 Engineering Goods	188,403	175,156	12,222	14,083	20,994	13,217	14,316	16,666	14,057
40 Gems	3,932	2,987	559	167	340	361	332	313	193
41 Jewellery	7,987	6,020	272	543	305	351	275	389	2,778
42 Furniture	5,464	4,540	257	387	179	456	389	237	202
43 Molasses	8,388	11,614	815	-	6,553	807	9	807	580
44 Handicrafts	1,645	9	2,843	-	-	-	-	-	-
45 Cement	321,210	237,853	23,655	16,370	22,413	17,765	23,296	18,042	14,545
46 Guar and Guar Products	24,941	29,874	2,333	1,915	1,968	2,013	3,209	2,781	4,039
E. All Other Items	954,735	988,838	103,166	88,109	98,888	89,893	108,316	110,836	97,840
TOTAL	20,786,508	20,433,565	1,756,848	1,721,854	1,860,383	1,675,141	1,888,293	1,974,476	1,976,837

4.17 Imports By Selected Commodities

(a) State Bank of Pakistan

(Thousand US Dollars)

COMMODITIES	2015-16	2016-17 ^R	2016 ^R		2017 ^P				
			Nov	Dec	Aug	Sep	Oct	Nov	Dec
A. Food Group	4,600,395	5,419,457	407,687	495,654	450,621	469,972	427,867	461,790	388,992
1-Milk, Cream & Milk Food for Infants	235,780	235,077	16,060	14,418	22,388	21,863	24,127	19,772	15,796
2-Wheat un-milled	1,941	1,494	1,044	260	-	-	72	9	..
3-Dry Fruits & Nuts	99,410	139,882	12,866	11,947	14,307	12,895	10,940	6,810	4,288
4-Tea	490,317	517,346	45,406	48,768	43,201	35,907	46,846	47,102	42,681
5-Spices	94,244	118,363	10,293	14,544	15,433	12,358	9,345	7,436	7,986
6-Soya bean Oil	166,150	111,062	1,588	1,128	18,223	14,092	14,681	7,096	883
7-Palm Oil	1,600,041	1,783,846	160,469	149,093	163,042	137,742	153,214	163,787	150,205
8-Sugar	5,185	4,572	479	392	546	295	593	433	276
9-Pulses	502,969	830,806	44,931	74,781	43,658	29,581	32,909	36,666	39,736
10-All others Food items	1,404,358	1,677,009	114,551	180,325	129,823	205,240	135,140	172,680	127,140
B. Machinery Group	7,096,777	7,910,007	574,715	782,389	759,500	695,536	745,933	757,836	700,246
11-Power Generating Machinery	1,356,328	1,619,796	113,860	217,690	243,113	144,758	130,497	110,895	146,033
12-Office Mach. Incl. Data Processing	254,008	432,608	33,129	33,794	20,818	23,357	24,238	28,591	18,836
13-Textile Machinery	529,390	652,333	60,505	70,874	45,786	56,208	70,566	50,914	41,056
14-Construction & Mining Machinery	84,720	159,047	10,562	11,619	18,763	11,071	21,187	13,199	20,048
15-Electrical Machinery & Apparatus	1,650,692	1,324,517	112,399	125,830	139,919	115,224	170,627	220,775	144,975
16-Telecom	1,201,062	1,023,019	61,260	125,491	88,047	162,973	99,617	91,033	123,822
17-Agricultural Machinery & Implements	61,121	77,271	5,285	6,191	6,916	6,478	11,022	9,664	8,267
18-Other Machinery	1,959,456	2,621,416	177,714	190,900	196,137	175,466	218,179	232,765	197,209
C. Transport Group	1,861,328	2,643,253	259,929	205,721	221,378	256,473	267,831	248,433	199,373
19-Road Vehicles(Build Unit, Ckd/Skd)	1,263,807	1,774,113	196,538	135,422	172,654	181,211	194,297	182,015	145,646
20-Aircrafts , Ships and Boats	536,178	606,729	60,724	61,705	36,388	71,627	67,676	61,184	47,074
21-Others Transport Equipments	61,344	262,411	2,667	8,594	12,336	3,635	5,857	5,234	6,653
D. Petroleum Group	8,359,704	10,606,793	990,177	916,536	1,029,831	851,563	1,117,863	1,194,811	1,072,721
22-Petroleum Products	5,098,139	6,379,880	584,784	639,619	629,580	465,547	596,618	667,855	695,413
23-Petroleum Crude	2,569,696	2,764,648	297,004	165,752	238,609	254,174	232,175	420,425	313,317
24.Natural Gas, Liquified	578,924	1,270,680	84,219	87,058	152,684	108,049	153,479	76,464	45,719
25. Petroleum Gas, Liquified	107,511	190,741	24,137	24,041	8,935	23,793	15,570	19,436	18,265
26. Others	5,434	844	32	66	22	-	22	10,630	6
E. Textile Group	3,154,590	3,968,310	272,885	375,068	228,368	208,348	253,113	273,739	300,201
27-Raw Cotton	1,127,165	909,321	33,878	30,073	11,047	6,804	31,751	43,481	68,862
28-Synthetic Fibre	478,965	491,104	31,639	34,018	44,542	40,554	33,792	36,273	41,971
29-Synthetic & artificial Silk Yarn	643,293	644,273	58,752	57,256	60,676	49,083	58,748	54,798	55,372
30-Worn Clothing	48,978	55,372	7,224	5,741	5,985	4,945	6,742	8,890	7,640
31-Other Textile Items	856,190	1,868,240	141,392	247,981	106,117	106,962	122,080	130,297	126,357
F. Agricultural & Other Chemical Group	6,714,960	7,122,563	601,247	529,592	659,034	578,241	692,917	719,010	616,999
32-Fertilizer Manufactured	734,286	572,072	100,768	21,778	61,006	58,622	67,692	121,088	69,821
33-Insecticides	171,627	157,888	11,369	13,984	10,085	6,825	15,228	14,097	15,542
34-Plastic Material	1,791,303	1,874,798	147,357	142,347	172,505	151,520	188,369	180,854	180,825
35-Medicinal Products	642,480	669,772	52,488	50,708	55,748	50,465	65,906	65,835	54,084
36-Others	3,375,265	3,848,034	289,265	300,776	359,690	310,811	335,723	337,136	296,727
G. Metal Group	3,662,784	3,785,646	412,400	284,499	436,719	320,887	351,574	345,610	353,314
37-Gold	62	44	-	1	3	-	1	-	-
38-Iron and Steel Scrap	836,518	969,147	65,037	86,473	119,930	83,166	94,487	107,368	99,093
39-Iron and Steel	2,094,016	2,092,172	297,199	140,185	241,461	185,694	187,571	172,000	171,556
40-Aluminum Wrought & Worked	232,565	239,254	18,652	18,351	26,710	17,800	27,260	23,786	29,444
41-All other Metals & Articles	499,623	485,029	31,513	39,489	48,615	34,227	42,255	42,456	53,220
H. Miscellaneous Group	999,393	1,195,983	99,008	99,988	103,652	97,151	113,192	109,699	100,882
42-Rubber Crude Incl. Synth/Reclaimed	110,624	155,454	9,690	11,253	12,680	12,497	10,539	12,728	13,718
43-Rubber Tyres & Tubes	215,395	306,413	32,125	26,813	28,742	25,496	33,846	26,403	26,992
44-Wood & Cork	154,736	173,371	16,608	15,796	14,297	13,037	15,319	15,451	13,910
45-Jute	30,935	40,803	3,864	5,750	2,513	3,167	3,393	6,615	5,705
46-Paper & Paper Board & Manuf. thereof	487,702	519,943	36,721	40,376	45,419	42,953	50,095	48,501	40,557
I. All Others	3,914,004	4,628,874	328,745	375,729	335,702	314,839	343,319	315,928	368,169
Import Payments (Banks)	40,363,936	47,280,886	3,946,792	4,065,177	4,224,805	3,793,010	4,313,610	4,426,856	4,100,898
J. Other Imports	2,303,802	2,879,959	145,345	318,104	251,063	303,745	283,366	208,123	274,673
K. Less: Freight & Insurance	1,412,738	1,654,831	138,138	142,281	147,868	132,755	150,976	154,940	143,531
Total Import BOP	41,255,000	48,506,014	3,954,000	4,241,000	4,328,000	3,964,000	4,446,000	4,480,039	4,232,039

Note: Other Imports includes land borne Import, Import of samples, Import processing zone, outstanding Import bills and refund & rebate, repairs on goods, goods procured on ports by carriers.

Archive Link: [http://www.sbp.org.pk/ecodata/Imports-\(BOP\)-Commodities.xls](http://www.sbp.org.pk/ecodata/Imports-(BOP)-Commodities.xls)

4.17 Imports by Selected Commodities

(b) Pakistan Bureau of Statistics

(Thousand US Dollars)

COMMODITIES	2015-16	2016-17	2016		2017				
			Nov	Dec	Aug	Sep ^p	Oct ^p	Nov ^p	Dec ^p
A. Food Group	5,388,605	6,142,387	513,071	522,930	588,456	499,321	575,544	520,127	521,641
1-Milk, Cream & Milk Food for Infants	278,796	258,703	22,628	15,383	19,608	16,920	22,499	26,518	17,544
2-Wheat un-milled	-	-	-	-	-	-	-	-	-
3-Dry Fruits & Nuts	171,929	180,476	14,704	14,291	18,889	16,587	14,354	14,170	8,997
4-Tea	513,013	524,006	36,017	48,988	50,500	40,723	47,077	46,705	53,138
5-Spices	147,337	138,643	10,907	12,237	19,731	14,527	10,984	9,244	11,500
6-Soya bean Oil	182,860	122,785	3,058	689	18,271	16,682	6,000	15,404	3,643
7-Palm Oil	1,689,438	1,905,761	160,564	173,356	183,016	150,692	178,737	176,780	171,550
8-Sugar	6,207	5,108	835	330	627	465	532	427	258
9-Pulses	595,140	952,430	55,264	82,648	50,851	34,599	35,201	41,922	55,604
10-All others Food items	1,803,885	2,054,475	209,094	175,008	226,963	208,126	260,160	188,957	199,407
B. Machinery Group	8,572,778	11,752,174	913,519	1,034,749	946,962	811,777	889,243	862,915	970,235
11-Power Generating Machinery	1,848,122	3,005,017	244,795	228,443	213,207	202,733	215,447	183,708	142,193
12-Office Mach. Incl. Data Processing	328,283	523,315	31,145	39,880	33,679	30,099	35,315	51,793	49,017
13-Textile Machinery	461,502	556,648	52,764	54,618	47,363	58,051	54,415	44,931	41,896
14-Construction & Mining Machinery	321,691	494,508	47,020	36,158	33,676	27,345	41,333	26,888	21,960
15-Electrical Machinery & Apparal-tus	1,793,779	2,324,459	155,370	225,839	135,257	165,162	185,781	170,677	245,765
16-Telecom	1,361,126	1,286,336	116,203	165,594	115,225	102,781	116,690	113,522	179,287
17-Agricultural Machinery & Implements	85,093	116,676	12,887	6,803	6,036	8,754	10,015	7,612	10,276
18-Other Machinery	2,373,182	3,380,047	253,335	277,414	362,519	216,852	230,247	263,784	279,841
C. Transport Group	2,962,237	3,327,694	223,847	238,617	327,844	276,546	333,723	354,433	362,888
19-Road Motor Vehicles(Build Unit, Ckd/Skd)	1,932,829	2,518,542	216,157	191,329	281,695	230,116	265,135	250,952	216,086
20-Aircrafts , Ships and Boats	973,912	521,749	5,188	40,781	25,837	34,618	59,114	81,281	76,368
21-Others Transport Equipments	55,496	287,404	2,502	6,508	20,312	11,812	9,474	22,200	70,434
D. Petroleum Group	7,632,987	10,912,883	908,177	917,009	1,084,465	1,136,321	1,264,004	1,123,492	1,119,926
22-Petroleum Products	5,337,194	6,838,060	583,158	602,855	612,932	690,634	752,921	625,203	618,534
23-Petroleum Crude	2,295,793	2,536,755	212,127	192,551	309,125	283,316	350,905	299,803	294,451
24.Natural Gas, Liquefied	...	1,312,812	87,137	87,172	130,596	130,573	137,195	166,435	175,211
25. Petroleum Gas, Liquefied	...	224,910	25,755	34,402	31,812	31,779	22,945	32,023	31,730
26. Others	...	346	-	29	19	38	28	-	-
E. Textile Group	3,146,889	3,357,520	225,002	243,858	224,303	193,923	225,462	238,567	247,761
27-Raw Cotton	750,359	809,966	17,525	22,919	3,242	4,130	17,562	21,744	22,751
28-Synthetic Fibre	481,988	484,729	27,642	29,654	45,129	40,961	36,966	35,269	38,179
29-Synthetic & artificial Silk Yarn	619,562	635,003	58,618	60,815	59,270	42,850	55,051	48,898	56,699
30-Worn Clothing	155,783	144,435	12,746	12,104	14,218	10,891	13,148	13,601	13,754
31-Other Textile Items	1,139,197	1,283,387	108,471	118,366	102,444	95,091	102,735	119,055	116,378
F. Agricultural & Other Chemical Group	7,225,953	7,584,073	630,236	640,629	690,822	681,376	734,951	744,429	704,745
32-Fertilizer Manufactured	726,353	640,718	104,447	63,964	54,749	76,215	94,125	128,556	60,130
33-Insecticides	153,503	159,323	9,956	10,051	10,802	20,490	14,657	14,616	14,416
34-Plastic Material	1,814,254	1,919,416	150,091	158,458	188,374	185,519	200,163	160,750	171,743
35-Medicinal Products	921,458	975,330	79,362	72,176	76,639	84,209	96,014	84,233	97,877
36-Others	3,610,385	3,889,286	286,380	335,980	360,258	314,943	329,992	356,274	360,579
G. Metal Group	4,120,821	4,411,210	361,274	355,715	491,287	384,978	407,598	383,238	435,080
37-Gold	24,434	16,668	823	2,084	2,400	1,168	1,737	1,367	2,880
38-Iron and Steel Scrap	1,087,559	1,119,757	83,342	100,668	153,006	118,068	121,731	120,584	121,024
39-Iron and Steel	2,005,620	2,121,052	193,686	158,402	222,853	180,772	182,335	162,410	196,040
40-Aluminum Wrought & Worked	193,505	196,334	15,331	14,377	18,144	12,790	19,556	18,906	20,847
41-All other Metals & Articles	809,703	957,399	68,092	80,184	94,884	72,180	82,239	79,971	94,289
H. Miscellaneous Group	1,109,791	1,222,872	89,208	109,103	110,484	109,171	102,527	109,944	103,002
42-Rubber Crude Incl. Synth/Reclaimed	146,356	174,807	12,306	13,066	14,744	15,448	12,332	17,416	16,937
43-Rubber Tyres & Tubes	313,900	350,597	23,413	32,573	37,594	33,080	32,381	31,244	26,091
44-Wood & Cork	112,379	123,756	9,350	9,831	8,948	10,235	11,506	9,368	9,743
45-Jute	31,845	45,318	4,118	6,690	2,461	3,219	4,101	5,429	5,989
46-Paper & Paper Board & Manuf. thereof	505,311	528,394	40,021	46,943	46,737	47,189	42,207	46,487	44,242
I. All other Items	4,524,780	4,249,457	341,157	397,041	458,447	379,934	395,690	560,369	444,408
TOTAL	44,684,841	52,960,269	4,205,491	4,459,651	4,923,070	4,473,347	4,928,742	4,897,514	4,909,686

4.18 Exports by Selected Countries/Territories

(a) State Bank of Pakistan

(Thousand US Dollars)

Country / Territory	2015-16	2016-17 ^R	2016 ^R		2017 ^P				
			Nov	Dec	Aug ^R	Sep ^R	Oct	Nov ^R	Dec
Grand Total	21,971,996	21,938,000	1,860,000	1,891,000	2,098,000	1,745,000	1,971,000	2,148,000	1,993,000
A. Latin America	34,339	33,176	2,653	1,827	3,760	3,058	2,830	2,061	3,322
B. Central America	152,778	125,533	9,606	10,699	12,170	12,275	11,316	9,894	10,921
Mexico	107,855	91,969	6,951	7,738	9,000	9,366	7,998	7,509	7,634
Others	44,922	33,563	2,655	2,961	3,170	2,909	3,318	2,385	3,287
C. South America	250,270	239,535	18,364	21,139	22,851	18,388	17,769	20,579	18,980
Argentina	51,590	47,386	3,787	4,411	3,587	2,979	3,122	3,119	2,889
Brazil	45,916	40,598	2,929	3,311	4,396	3,434	3,322	4,151	4,143
Uruguay	5,687	8,522	531	326	513	506	525	849	727
Others	147,078	143,029	11,118	13,090	14,355	11,469	10,800	12,461	11,221
D. North America	3,951,764	3,921,083	322,902	319,216	363,454	338,395	363,640	340,312	330,979
Canada	231,132	236,395	21,010	18,369	20,313	21,250	24,072	23,610	21,534
USA	3,717,459	3,683,358	301,489	300,822	343,123	316,894	339,557	316,608	309,379
Others	3,173	1,330	403	25	18	251	11	95	66
E. Eastern Europe	448,543	452,215	33,632	42,437	43,445	35,053	42,521	41,307	46,910
Hungary	15,418	16,328	1,255	765	2,188	1,380	1,808	1,042	1,645
Romania	20,147	20,658	2,162	2,015	2,019	2,006	2,561	2,953	2,930
Russian Federation	151,413	131,672	7,254	12,726	9,450	6,950	7,592	10,678	13,576
Ukraine	39,448	33,571	2,949	3,990	3,185	3,012	3,969	3,782	5,680
Others	222,116	249,986	20,012	22,941	26,602	21,706	26,591	22,852	23,079
F. Northern Europe	2,104,885	2,111,481	172,614	170,278	210,189	177,387	189,474	199,714	174,689
Denmark	143,109	155,862	11,972	11,923	18,198	12,796	13,129	15,387	13,977
Finland	27,491	28,194	1,795	2,536	2,633	2,541	1,765	3,064	2,438
Norway	46,104	45,245	3,116	3,505	4,209	4,823	3,389	4,003	2,972
Sweden	132,802	154,800	12,608	13,584	15,763	13,095	13,840	12,604	13,208
United Kingdom	1,628,664	1,619,506	135,542	128,727	159,676	133,576	147,571	152,884	133,193
Others	126,715	107,873	7,581	10,004	9,710	10,556	9,780	11,772	8,901
G. Southern Europe	1,723,554	1,759,749	141,111	129,224	164,162	167,909	179,857	173,283	155,461
Greece	60,117	60,068	4,390	4,350	5,233	4,809	6,124	5,439	5,640
Italy	642,119	665,885	51,675	45,399	58,926	59,918	60,572	60,596	52,501
Spain	786,905	803,197	64,270	58,385	72,555	77,059	88,166	87,156	75,032
Others	234,413	230,599	20,775	21,090	27,449	26,123	24,994	20,092	22,287
H. Western Europe	2,795,500	2,968,462	242,252	239,978	290,460	261,685	293,190	287,358	252,756
Belgium	503,249	590,140	50,337	51,043	51,355	50,825	52,207	53,919	45,982
France	430,188	419,877	37,442	31,122	38,982	32,483	43,928	36,337	31,123
Germany	1,216,889	1,236,578	100,947	98,328	123,214	107,910	121,523	116,337	97,423
Netherlands	555,305	643,525	47,495	49,326	71,216	61,920	61,630	64,259	59,955
Switzerland	64,611	57,177	3,823	7,720	3,643	7,245	12,527	15,043	17,011
Others	25,258	21,165	2,208	2,439	2,051	1,303	1,375	1,463	1,263
I. Eastern Africa	665,508	646,494	61,718	63,108	52,631	50,061	50,185	75,776	76,215
Kenya	252,398	283,250	25,556	25,341	24,680	25,260	20,707	27,033	26,423
Mauritius	28,539	23,241	2,872	1,774	1,333	1,570	2,069	1,688	1,550
United Republic of Tanzania	101,644	79,946	8,753	10,394	5,672	5,047	6,931	9,756	10,673
Others	282,927	260,057	24,537	25,598	20,947	18,184	20,478	37,300	37,569

4.18 Exports by Selected Countries/Territories

(a) State Bank of Pakistan

(Thousand US Dollars)

Country / Territory	2015-16	2016-17 ^R	2016 ^R		2017 ^P				
			Nov	Dec	Aug ^R	Sep ^R	Oct	Nov ^R	Dec
J. Middle Africa	64,235	58,913	5,464	1,290	1,803	1,755	1,934	3,342	2,324
K. Northern Africa	200,766	167,790	15,776	13,187	16,310	11,142	10,415	11,999	10,178
Egypt	113,314	84,395	8,741	6,676	7,041	5,742	5,537	6,118	4,868
Morocco	12,350	19,117	1,376	1,784	2,862	1,687	1,657	1,636	1,820
Others	75,102	64,278	5,659	4,727	6,407	3,713	3,221	4,244	3,490
L. Southern Africa	199,738	178,073	13,909	17,313	15,218	12,911	15,601	21,847	17,691
South Africa	188,830	165,845	13,176	16,267	13,420	10,277	14,113	17,894	16,034
Others	10,908	12,228	733	1,046	1,798	2,634	1,488	3,954	1,657
M. Western Africa	231,721	215,102	10,800	28,590	21,324	23,045	18,592	19,214	28,452
N. Eastern Asia	2,631,756	2,363,241	224,652	205,734	198,288	164,226	203,781	224,802	201,262
China	1,905,482	1,624,256	167,738	156,851	131,454	113,851	136,078	152,073	148,226
Hong Kong	275,644	203,924	15,933	14,866	19,550	11,982	19,764	26,232	11,403
Japan	196,796	204,624	14,361	16,667	15,677	14,896	27,185	18,957	21,339
Republic of Korea	243,905	329,835	26,529	17,280	31,601	23,442	20,722	27,454	20,230
Others	9,930	603	91	70	5	55	31	87	66
O. South-Central Asia	2,766,168	2,500,682	212,746	209,742	238,390	238,755	213,637	265,819	283,137
Afghanistan	1,230,230	1,127,924	98,802	96,420	117,764	104,074	98,988	145,930	158,510
Bangladesh	694,565	623,442	59,730	54,873	57,099	49,877	56,169	55,858	52,964
India	400,026	408,472	27,581	30,584	30,131	56,448	27,927	32,933	29,223
Iran	30,579	29,792	1,820	3,317	2,476	2,312	1,723	1,624	5,521
Sri Lanka	256,991	250,704	21,802	22,543	24,573	23,757	24,973	25,211	21,377
Others	153,777	60,347	3,011	2,006	6,347	2,287	3,857	4,264	15,543
P. South Eastern Asia	980,619	1,085,175	112,498	104,967	78,907	74,928	126,545	101,254	93,836
Indonesia	126,109	152,874	18,209	21,269	11,199	11,644	14,918	16,309	17,692
Malaysia	144,483	138,530	19,303	16,208	12,662	11,948	12,610	8,608	8,967
Singapore	283,709	226,537	16,820	18,046	14,800	10,883	44,403	22,788	21,456
Thailand	97,433	137,313	11,271	14,272	8,950	6,488	8,221	12,097	11,557
Others	328,884	429,921	46,894	35,171	31,295	33,965	46,394	41,452	34,164
Q. Western Asia	2,279,463	2,147,461	179,039	168,529	205,847	153,609	196,700	226,305	210,173
Bahrain	58,012	56,569	5,472	4,588	4,498	3,978	3,806	3,410	3,652
Jordan	40,650	46,289	2,468	4,518	3,474	2,318	2,648	2,614	1,865
Kuwait	99,914	92,833	9,404	8,559	8,134	5,958	7,436	8,593	7,626
Saudi Arabia	447,530	359,744	28,492	30,161	30,911	22,937	27,618	29,531	27,589
Turkey	214,888	249,282	22,547	18,244	30,543	23,669	26,104	24,975	27,728
United Arab Emirates	1,082,910	1,064,609	89,923	75,644	98,149	70,060	103,911	118,797	113,180
Others	335,559	278,134	20,733	26,815	30,137	24,688	25,177	38,386	28,533
R. Australia & New Zealand	258,464	300,475	19,013	18,607	36,644	18,679	21,920	36,258	18,455
Australia	211,610	251,074	14,535	14,625	32,635	15,297	17,301	32,229	13,384
New Zealand	37,954	43,213	4,074	3,123	3,060	2,806	3,787	3,182	4,314
Others	8,900	6,189	405	859	950	576	832	847	758
S. Others	77,323	74,782	5,014	5,880	4,270	2,576	4,866	5,327	5,595
Export Receipts (Banks)	21,817,392	21,349,421	1,803,763	1,771,745	1,980,124	1,765,837	1,964,774	2,066,454	1,941,336
T Other Exports	614,514	784,620	74,697	136,405	139,741	(3,493)	28,091	98,890	69,008
U Less: Freight and insurance	459,909	196,042	18,460	17,150	21,865	17,344	21,865	17,344	17,344

Archive Link: [http://www.sbp.org.pk/ecodata/Exports-\(BOP\)-Countries.xls](http://www.sbp.org.pk/ecodata/Exports-(BOP)-Countries.xls)

4.18 Exports by Selected Countries/Territories

(b) Pakistan Bureau of Statistics

(Thousand US Dollars)

Country / Territory	2015-16	2016-17	2016		2017				
			Jul	Aug	Apr	May	Jun	Jul	Aug
Grand Total	20,786,508	20,422,234	1,474,744	1,653,471	1,798,478	1,620,334	1,906,364	1,626,761	1,860,382
A. Latin America	28,564	29,607	2,009	2,272	3,715	1,599	1,308	2,335	2,086
B. Central America	146,669	127,176	11,687	11,557	10,832	9,255	11,531	10,303	11,699
Mexico	103,108	94,084	9,271	8,890	7,710	7,062	8,504	7,814	8,358
Others	43,562	33,091	2,416	2,667	3,121	2,192	3,027	2,489	3,341
C. South America	242,454	241,889	20,242	21,278	20,769	18,549	23,079	20,142	21,735
Argentina	54,687	39,975	3,138	4,209	3,269	3,087	1,822	2,762	3,928
Brazil	38,080	42,196	1,818	3,409	4,539	3,857	4,100	3,843	4,167
Uruguay	5,619	7,975	597	825	685	412	610	594	792
Others	144,068	151,745	14,689	12,835	12,276	11,193	16,546	12,943	12,847
D. North America	3,717,823	3,679,656	275,712	320,832	288,008	301,305	381,999	266,027	351,283
Canada	216,382	230,284	17,587	18,953	23,347	18,730	23,281	18,006	21,477
USA	3,501,344	3,449,290	258,119	301,871	264,655	282,568	358,714	248,021	329,783
Others	97	81	6	8	6	7	4	-	23
E. Eastern Europe	425,203	442,788	33,949	27,805	32,945	31,037	38,693	34,478	38,820
Hungary	11,657	11,343	1,542	1,469	758	1,346	805	1,442	1,360
Romania	19,153	21,781	2,089	1,843	1,125	1,131	1,592	1,494	2,804
Russian Federation	145,939	129,459	7,353	7,064	8,661	6,600	7,638	6,982	7,657
Ukraine	37,036	36,722	1,885	1,100	3,666	2,742	2,146	2,096	3,972
Others	211,420	243,485	21,080	16,329	18,736	19,219	26,511	22,464	23,027
F. Northern Europe	2,008,745	2,032,978	175,574	158,695	174,972	147,681	198,458	171,225	200,892
Denmark	127,496	144,698	12,955	11,934	12,349	11,985	13,525	12,408	13,901
Finland	30,513	31,722	2,496	1,863	3,321	3,220	4,270	2,448	2,781
Norway	42,415	44,648	3,493	3,214	3,307	3,250	4,920	4,179	4,885
Sweden	119,408	137,541	11,468	11,162	9,688	9,699	14,347	12,477	13,140
United Kingdom	1,580,411	1,557,678	134,663	123,061	136,629	110,318	149,431	129,688	152,316
Others	108,504	116,691	10,499	7,460	9,679	9,209	11,965	10,025	13,869
G. Southern Europe	1,763,440	1,802,380	111,743	166,799	146,053	152,730	180,152	145,287	198,326
Greece	62,564	62,589	4,265	4,481	6,301	5,055	5,944	4,913	5,248
Italy	649,489	655,007	36,388	60,204	52,216	55,523	65,718	45,653	72,803
Spain	808,015	816,647	54,664	80,396	63,049	68,369	80,604	77,749	88,386
Others	243,375	268,135	16,425	21,718	24,486	23,783	27,885	16,972	31,890
H. Western Europe	2,751,543	2,909,578	249,527	236,659	248,076	215,668	299,211	260,073	287,178
Belgium	607,835	633,256	54,629	53,733	50,313	42,998	66,388	59,662	62,472
France	345,016	370,690	26,848	28,605	33,412	30,743	39,893	30,710	32,848
Germany	1,131,462	1,194,541	102,742	94,778	107,474	91,857	111,211	106,629	109,417
Netherlands	639,654	685,369	62,799	57,925	54,753	47,677	79,358	60,541	80,543
Switzerland	12,072	11,910	1,088	804	1,243	1,215	1,035	1,117	713
Others	15,502	13,811	1,420	814	881	1,178	1,325	1,415	1,185
I. Eastern Africa	685,239	674,292	31,535	41,741	71,297	46,294	58,674	42,192	60,579
Kenya	257,427	306,415	12,223	18,147	32,038	26,103	30,651	21,072	29,143
Mauritius	17,108	17,365	999	1,219	2,556	1,457	2,255	658	1,075
United Republic of Tanzania	133,143	93,694	7,070	7,189	7,416	3,796	8,171	7,741	6,531
Others	277,562	256,818	11,243	15,186	29,288	14,939	17,596	12,721	23,830

4.18 Exports by Selected Countries/Territories

(b) Pakistan Bureau of Statistics

(Thousand US Dollars)

Country / Territory	2015-16	2016-17	2016		2017				
			Jul	Aug	Apr	May	Jun	Jul	Aug
J. Middle Africa	62,964	51,612	2,991	2,349	3,473	5,195	4,385	2,620	4,021
K. Northern Africa	223,029	187,949	13,019	17,472	15,298	13,922	14,727	15,100	13,212
Egypt	115,691	84,286	6,536	8,937	5,658	5,360	6,045	7,331	6,138
Morocco	15,680	20,490	853	1,508	1,846	2,269	2,668	1,464	2,264
Others	91,657	83,172	5,629	7,026	7,793	6,293	6,014	6,305	4,810
L. Southern Africa	190,465	179,203	12,026	18,429	14,381	11,093	22,245	10,826	18,186
South Africa	183,779	169,916	11,218	17,599	14,124	10,249	20,921	9,661	17,270
Others	6,682	9,288	808	830	257	844	1,323	1,164	917
M. Western Africa	286,808	212,327	14,594	10,665	21,993	9,305	27,129	21,831	27,786
N. Eastern Asia	2,310,376	2,156,417	158,396	174,419	185,324	138,644	188,749	145,367	159,628
China	1,670,232	1,469,099	109,723	118,819	110,962	97,814	109,729	98,974	99,732
Hong Kong	166,401	121,132	9,067	12,017	9,455	9,350	8,339	8,361	8,819
Japan	176,408	172,729	14,962	14,029	16,450	10,225	18,020	13,354	16,863
Republic of Korea	257,290	338,080	20,113	24,022	44,217	16,413	47,781	18,926	29,913
Others	40,048	55,374	4,530	5,532	4,239	4,841	4,880	5,753	4,301
O. South-Central Asia	2,771,826	2,606,466	152,687	223,536	286,831	263,145	180,817	227,868	229,986
Afghanistan	1,437,338	1,271,169	58,470	87,329	165,330	154,656	82,006	130,829	108,025
Bangladesh	693,077	624,964	45,975	64,042	60,190	46,802	43,358	43,536	50,233
India	303,580	359,179	25,612	46,041	25,558	26,831	24,493	22,013	33,984
Iran	35,489	31,463	3,262	2,457	4,260	2,294	2,268	2,525	1,658
Sri Lanka	247,145	249,403	17,369	19,791	19,737	22,432	19,099	20,928	28,287
Others	55,199	70,288	2,000	3,876	11,755	10,131	9,594	8,037	7,800
P. South Eastern Asia	801,704	889,111	50,245	54,951	77,507	75,610	60,226	51,534	65,602
Indonesia	126,461	139,773	7,872	7,732	9,915	8,518	4,995	5,106	9,044
Malaysia	159,663	129,955	12,584	9,380	8,933	8,287	9,478	8,596	9,876
Singapore	84,507	51,283	3,950	3,441	4,715	5,316	4,473	3,797	3,846
Thailand	107,254	135,592	6,964	7,313	16,017	16,938	12,894	7,458	7,336
Others	323,819	432,507	18,874	27,085	37,927	36,551	28,387	26,577	35,500
Q. Western Asia	2,083,980	1,903,201	143,060	145,676	178,066	147,513	194,963	165,662	149,112
Bahrain	66,471	49,292	3,955	4,449	3,478	2,919	3,760	2,660	2,958
Jordan	39,553	49,817	1,570	4,940	7,495	1,651	7,077	2,216	2,065
Kuwait	100,262	87,154	5,680	7,026	6,493	7,183	7,810	5,605	5,921
Saudi Arabia	417,036	340,832	28,906	26,261	28,835	25,119	25,738	23,484	23,421
Turkey	225,050	275,819	17,417	14,818	28,567	19,199	29,330	36,441	25,801
United Arab Emirates	820,753	793,109	64,029	62,699	73,346	68,394	94,252	70,663	61,347
Others	405,397	307,176	21,502	25,482	29,852	23,048	26,995	24,592	27,599
R. Australia & New Zealand	267,850	274,452	15,562	17,994	18,803	31,665	19,939	33,524	19,973
Australia	221,062	234,488	12,592	14,402	14,987	28,869	16,970	30,655	16,332
New Zealand	38,333	39,966	2,971	3,592	3,816	2,796	2,969	2,869	3,641
Others	8454	-	-	-	-	-	-	-	-
S. Others	17,831	21,151	186	344	135	123	81	368	278

4.19 Imports by Selected Countries/Territories

(a) State Bank of Pakistan

(Thousand US Dollars)

Country / Territory	2015-16	2016-17 ^R	2016 ^R		2017 ^P				
			Nov	Dec	Aug ^R	Sep ^R	Oct	Nov ^R	Dec
Grand Total	41,255,000	48,506,014	3,954,000	4,241,000	4,328,000	3,964,000	4,446,000	4,480,039	4,232,039
A. Latin America	91,478	89,669	1,445	23,708	30,059	7,052	8,877	14,599	4,075
B. Central America	33,335	40,347	3,659	540	2,764	2,141	2,456	1,718	1,312
Mexico	9,264	10,214	167	116	1,990	1,572	1,548	1,485	837
Others	24,071	30,133	3,492	424	774	568	908	233	475
C. South America	519,455	354,909	21,005	26,050	42,015	35,620	26,274	22,639	17,565
Argentina	193,789	113,508	9,551	11,637	11,502	4,582	4,566	4,900	1,138
Brazil	294,206	210,582	7,095	11,154	27,289	29,099	16,050	14,487	13,623
Uruguay	4,597	8,767	2,041	74	730	188	4,079	449	776
Others	26,864	22,052	2,318	3,185	2,494	1,751	1,579	2,803	2,028
D. North America	1,935,612	2,538,312	125,699	224,713	126,549	131,984	148,152	186,686	172,174
Canada	453,539	433,636	28,558	71,367	20,362	9,417	17,881	39,876	33,904
USA	1,480,203	2,101,905	97,081	153,346	106,188	122,457	130,223	146,809	138,269
Others	1,871	2,770	60	-	-	110	48	-	-
E. Eastern Europe	396,374	468,117	43,759	25,977	32,387	44,940	60,930	24,606	21,651
Hungary	30,046	33,034	9,891	1,599	1,753	1,188	1,095	470	553
Romania	14,110	43,417	9,270	2,042	990	967	1,082	3,261	1,083
Russian Federation	146,794	188,107	9,908	6,670	3,582	4,481	37,643	5,409	8,316
Ukraine	70,335	60,183	3,818	1,970	11,854	26,816	2,362	1,936	1,090
Others	135,089	143,375	10,871	13,695	14,207	11,489	18,748	13,531	10,609
F. Northern Europe	1,227,227	1,399,933	141,564	127,916	130,706	164,766	134,401	129,711	121,578
Denmark	61,639	130,349	13,838	6,980	9,331	19,904	14,134	20,361	18,441
Finland	46,032	62,433	9,016	5,545	5,551	5,618	7,076	10,626	5,448
Norway	7,154	8,844	678	1,007	1,798	5,262	578	1,804	1,033
Sweden	311,348	320,431	16,616	33,106	14,888	25,526	32,093	15,253	26,292
United Kingdom	652,747	794,837	93,541	76,313	92,881	102,243	75,217	75,372	64,427
Others	148,308	83,039	7,875	4,966	6,258	6,214	5,304	6,295	5,937
G. Southern Europe	667,142	810,637	60,921	58,668	63,418	57,223	66,084	69,085	89,826
Greece	11,816	12,737	237	205	668	982	1,327	4,219	3,752
Italy	409,429	547,342	43,337	40,303	42,983	43,566	48,723	46,559	60,965
Spain	210,737	212,038	13,398	16,669	17,972	11,418	12,813	14,351	23,842
Others	35,160	38,522	3,950	1,491	1,795	1,256	3,220	3,956	1,267
H. Western Europe	3,310,603	3,656,767	292,777	295,809	285,963	277,320	416,661	425,520	373,106
Belgium	434,703	388,373	27,497	35,370	29,944	29,991	31,922	44,395	70,734
France	381,438	421,118	32,055	37,170	32,318	31,139	29,161	32,593	26,305
Germany	969,488	1,094,590	88,970	89,067	92,232	100,872	92,270	78,310	73,132
Netherlands	618,922	730,074	33,197	59,062	67,174	41,199	118,811	196,060	103,087
Switzerland	735,988	849,912	95,332	65,384	52,550	56,490	131,042	60,784	85,946
Others	170,063	172,699	15,726	9,756	11,746	17,629	13,456	13,379	13,902
I. Eastern Africa	524,273	553,025	49,001	59,810	46,895	37,734	51,725	47,631	45,956
Kenya	389,007	434,898	37,705	40,102	41,402	31,692	43,552	41,096	41,048
Mauritius	5,488	3,146	173	156	871	384	347	646	461
United Republic of Tanzania	19,765	15,304	2,352	317	782	1,151	669	1,413	441
Others	110,012	99,677	8,771	19,234	3,841	4,507	7,157	4,476	4,006

4.19 Imports by Selected Countries/Territories

(a) State Bank of Pakistan

(Thousand US Dollars)

Country / Territory	2015-16	2016-17 ^R	2016 ^R		2017 ^P				
			Nov	Dec	Aug ^R	Sep ^R	Oct	Nov ^R	Dec
J. Middle Africa	46,731	12,560	1,694	294	1,696	133	245	449	1,683
K. Northern Africa	416,951	357,593	38,324	25,321	21,617	34,378	40,123	29,063	20,194
Egypt	107,539	108,956	7,167	7,591	8,964	11,991	17,190	8,909	9,091
Morocco	301,372	238,519	30,652	16,881	12,228	21,532	21,894	19,741	10,832
Others	8,040	10,118	506	849	425	856	1,040	413	270
L. Southern Africa	284,186	393,294	16,008	40,766	34,413	25,182	26,441	64,758	39,866
South Africa	263,936	300,213	12,420	37,969	27,894	17,774	23,061	26,220	16,833
Others	20,250	93,081	3,589	2,798	6,519	7,407	3,380	38,537	23,033
M. Western Africa	77,662	69,720	2,983	787	1,820	10,370	15,911	778	11,373
N. Eastern Asia	11,868,828	13,698,164	1,138,725	1,328,426	1,328,708	1,045,808	1,153,319	1,147,341	1,155,736
China	8,823,996	10,571,909	821,440	1,078,595	1,016,894	750,737	857,630	910,284	887,982
Hong Kong	1,017,828	780,257	71,504	52,162	76,048	80,896	68,296	57,121	51,510
Japan	1,398,119	1,696,519	188,811	147,372	179,541	149,386	163,029	117,714	143,086
Republic of Korea	625,280	647,695	56,945	50,239	55,981	64,783	64,148	62,146	73,147
Others	3,605	1,785	24	58	244	6	216	76	11
O. South-Central Asia	1,983,250	1,888,443	119,992	129,867	124,931	109,837	145,482	157,874	149,335
Afghanistan	40,676	68,018	8,025	10,326	8,035	5,450	14,452	19,481	16,138
Bangladesh	45,880	57,449	4,721	6,897	4,224	4,818	4,575	8,077	6,311
India	1,808,890	1,688,267	102,004	105,190	107,206	93,981	118,497	124,451	118,706
Iran	195	236	-	6	-	-	-	-	5
Sri Lanka	60,270	57,414	4,940	5,434	5,045	5,216	6,971	5,160	7,357
Others	27,338	17,059	303	2,015	421	372	986	705	818
P. South Eastern Asia	5,989,494	7,065,511	608,299	602,820	581,891	721,408	663,656	712,668	608,683
Indonesia	1,219,631	1,045,960	94,410	73,232	99,668	94,911	90,581	72,753	76,309
Malaysia	825,154	924,515	81,571	63,827	76,371	61,305	89,492	79,388	65,838
Singapore	3,007,914	4,058,809	354,894	390,895	290,324	451,790	375,375	453,468	385,377
Thailand	719,304	814,758	61,917	57,322	87,857	90,668	74,654	85,181	55,211
Others	217,492	221,469	15,507	17,544	27,671	22,733	33,553	21,878	25,948
Q. Western Asia	10,388,224	13,149,473	1,233,956	1,047,575	1,290,820	1,025,390	1,310,704	1,346,341	1,229,088
Bahrain	152,528	253,465	9,289	10,029	31,639	24,201	24,063	66,361	26,359
Jordan	10,839	23,238	2,383	2,414	1,987	2,108	1,152	1,537	1,547
Kuwait	1,172,762	1,108,855	72,875	78,665	64,673	57,378	84,860	94,488	120,150
Saudi Arabia	2,060,205	2,409,211	232,413	186,835	258,061	159,220	267,905	306,027	295,612
Turkey	249,181	305,168	20,607	20,946	23,402	24,244	19,847	23,183	28,404
United Arab Emirates	6,085,657	7,692,360	817,282	666,877	757,225	594,263	777,627	786,121	697,984
Others	657,052	1,357,176	79,105	81,810	153,833	163,977	135,250	68,625	59,032
R. Australia & New Zealand	350,154	453,784	29,574	25,660	41,405	21,693	22,039	24,599	17,058
Australia	288,803	384,863	27,565	22,522	30,002	15,216	13,660	20,331	11,330
New Zealand	56,035	54,111	1,791	2,612	11,275	6,200	8,226	3,861	5,480
Others	5,317	14,810	219	526	128	277	153	407	248
S. Others	252,957	280,628	17,408	20,470	36,748	40,031	20,131	20,792	20,641
Import Payments (Banks)	40,363,936	47,280,886	3,946,792	4,065,177	4,224,805	3,793,010	4,313,610	4,426,856	4,100,898
T. Other Imports	2,303,802	2,879,959	145,345	318,104	251,063	303,745	283,366	208,123	274,673
U. Less: Freight & Insurance	1,412,738	1,654,831	138,138	142,281	147,868	132,755	150,976	154,940	143,531

Note: Other Imports includes land borne Import, Import of samples, Import processing zone, outstanding Import bills and refund & rebate, repairs on goods, goods procured on ports by carriers.

Archive Link: [http://www.sbp.org.pk/ecodata/Imports-\(BOP\)-Countries.xls](http://www.sbp.org.pk/ecodata/Imports-(BOP)-Countries.xls)

4.19 Imports by Selected Countries/Territories

(b) Pakistan Bureau of Statistics

(Thousand US Dollars)

Country / Territory	2015-16	2016-17	2016		2017				
			Jul	Aug	Apr	May	Jun	Jul	Aug
Grand Total	44,684,841	52,909,948	3,536,119	4,302,730	4,962,552	5,066,164	4,512,041	4,808,502	4,923,072
A. Latin America	48,953	18,424	210	391	4,260	666	1,764	609	686
B. Central America	60,971	73,101	5,751	7,319	7,139	6,156	5,978	8,097	6,728
Mexico	48,638	58,041	4,773	5,102	6,440	4,125	4,576	6,914	5,689
Others	12,334	15,059	978	2,217	699	2,031	1,402	1,183	1,039
C. South America	987,355	754,174	65,035	76,989	55,471	123,444	124,036	119,906	134,430
Argentina	515,402	253,099	31,100	25,595	15,410	34,777	19,441	35,859	42,866
Brazil	422,062	468,742	32,846	49,667	37,931	85,929	99,497	72,351	84,842
Uruguay	2,246	1,196	54	186	49	77	62	197	93
Others	47,641	31,135	1,035	1,542	2,080	2,660	5,037	11,500	6,630
D. North America	2,416,217	3,293,486	168,774	274,487	403,025	254,475	249,914	324,640	226,089
Canada	639,153	735,289	42,928	76,701	108,990	49,489	42,786	36,436	36,585
USA	1,777,029	2,558,197	125,846	197,786	294,035	204,986	207,128	264,202	189,504
Others	36	-	-	-	-	-	-	24,002	0
E. Eastern Europe	610,770	843,495	49,323	55,865	111,538	60,632	83,594	55,201	62,302
Hungary	37,658	49,274	1,609	12,523	2,273	2,515	3,208	4,383	3,082
Romania	31,828	76,717	1,073	2,245	2,381	1,711	2,024	1,669	2,879
Russian Federation	217,011	333,670	21,773	20,304	34,438	25,708	58,453	23,928	14,059
Ukraine	133,790	96,735	5,860	4,579	17,982	4,508	3,033	3,316	19,411
Others	190,481	287,097	19,008	16,214	54,464	26,191	16,876	21,905	22,871
F. Northern Europe	1,179,386	1,137,512	80,655	89,317	96,650	113,769	102,257	117,329	114,710
Denmark	114,220	81,833	7,625	4,289	6,447	6,679	6,465	6,368	7,285
Finland	59,187	54,013	5,047	3,694	2,913	5,099	3,035	5,154	8,707
Norway	8,540	12,351	1,038	578	1,347	1,833	1,691	1,010	1,454
Sweden	190,588	208,329	15,179	18,374	21,422	17,936	20,087	20,600	14,252
United Kingdom	621,520	679,926	45,439	56,671	56,032	71,667	63,181	76,570	71,223
Others	185,329	101,060	6,327	5,711	8,489	10,554	7,799	7,628	11,789
G. Southern Europe	839,944	837,225	78,893	93,786	68,132	81,935	69,202	76,315	72,334
Greece	9,624	9,802	345	909	1,538	1,575	725	520	428
Italy	495,400	549,879	39,278	63,856	46,508	60,031	53,176	51,699	50,905
Spain	254,515	224,103	17,141	25,592	16,158	16,919	11,455	20,119	17,723
Others	80,403	53,439	22,129	3,428	3,928	3,410	3,845	3,977	3,277
H. Western Europe	3,358,340	3,736,893	261,642	265,781	409,866	261,861	293,734	320,017	344,915
Belgium	540,275	348,546	28,872	28,405	36,002	25,681	16,314	29,913	15,455
France	393,601	678,894	31,576	36,065	84,090	39,429	86,755	34,194	74,448
Germany	936,549	1,091,755	103,125	86,767	113,241	82,192	76,943	95,367	94,507
Netherlands	431,889	519,803	20,238	28,161	99,477	19,355	30,758	63,355	60,522
Switzerland	260,233	262,473	14,929	23,111	18,942	24,212	24,470	18,373	24,441
Others	795,792	835,423	62,902	63,272	58,114	70,991	58,493	78,815	75,543
I. Eastern Africa	633,840	609,682	47,480	60,591	44,988	42,647	36,075	49,783	57,904
Kenya	400,678	431,907	36,326	45,095	32,616	31,498	25,200	38,369	46,504
Mauritius	31,661	3,856	112	195	71	2,513	70	127	204
United Republic of Tanzania	22,935	23,253	509	873	1,155	485	1,157	1,576	926
Others	178,566	150,665	10,533	14,428	11,146	8,151	9,649	9,710	10,270

4.19 Imports by Selected Countries/Territories

(b) Pakistan Bureau of Statistics

(Thousand US Dollars)

Country / Territory	2015-16	2016-17	2016		2017				
			Jul	Aug	Apr	May	Jun	Jul	Aug
J. Middle Africa	13,156	7,727	398	1,353	433	606	593	399	504
K. Northern Africa	489,775	433,317	31,264	35,517	28,292	51,990	23,372	36,020	42,810
Egypt	128,460	138,579	7,035	9,955	9,169	14,251	9,724	11,310	13,720
Morocco	334,782	267,203	21,844	23,337	17,155	31,966	12,161	22,052	26,153
Others	26,532	27,535	2,385	2,225	1,968	5,774	1,487	2,658	2,936
L. Southern Africa	486,333	814,000	48,112	42,704	106,874	112,450	86,209	84,362	99,125
South Africa	469,624	803,195	47,592	41,634	104,493	111,973	85,406	83,102	98,189
Others	16,712	10,806	521	1,070	2,380	477	803	1,259	936
M. Western Africa	87,251	111,935	7,738	4,696	26,136	21,073	7,874	9,505	1,573
N. Eastern Asia	15,221,621	18,464,324	1,230,882	1,735,460	1,607,235	1,778,582	1,510,517	1,781,609	1,637,677
China	12,098,531	15,132,288	1,004,696	1,417,930	1,296,304	1,449,962	1,248,786	1,463,931	1,309,559
Hong Kong	73,573	75,920	6,325	6,807	7,924	6,805	5,539	6,919	5,924
Japan	1,824,894	2,076,862	133,455	209,411	202,023	212,901	154,840	191,742	209,623
Republic of Korea	771,194	748,810	54,064	61,263	63,322	76,082	59,684	77,284	74,018
Others	453,430	430,445	32,343	40,049	37,661	32,832	41,667	41,734	38,554
O. South-Central Asia	2,633,609	2,548,687	153,437	189,645	205,000	212,823	176,076	167,040	196,345
Afghanistan	409,796	342,770	13,080	23,112	21,221	20,397	22,816	32,930	45,775
Bangladesh	50,624	59,692	2,169	1,907	5,236	3,066	4,613	3,135	4,115
India	1,779,603	1,701,670	100,691	119,296	150,779	133,139	116,140	101,860	105,804
Iran	283,209	287,408	29,056	32,649	20,147	34,514	16,598	22,433	34,704
Sri Lanka	74,596	102,333	4,887	8,773	5,231	17,921	14,411	5,783	5,482
Others	35,782	54,816	3,553	3,908	2,386	3,786	1,499	899	465
P. South Eastern Asia	4,877,142	5,519,821	341,388	410,836	533,064	549,831	500,959	497,516	561,310
Indonesia	2,135,843	2,296,380	126,092	160,277	218,331	236,134	185,376	184,689	243,381
Malaysia	925,552	957,459	73,833	86,811	76,355	82,186	97,265	122,107	101,241
Singapore	625,095	771,004	47,175	50,426	91,307	72,863	72,970	45,687	39,880
Thailand	845,252	1,109,102	74,629	81,277	105,885	112,824	104,614	96,198	121,224
Others	345,400	385,876	19,659	32,046	41,185	45,824	40,733	48,834	55,583
Q. Western Asia	10,162,378	13,049,598	923,168	918,900	1,165,457	1,337,111	1,195,389	1,106,602	1,287,224
Bahrain	76,637	81,071	4,332	5,562	10,604	13,483	14,445	3,390	17,082
Jordan	23,495	30,666	3,225	2,296	3,233	4,497	1,383	4,007	3,661
Kuwait	1,338,150	1,354,937	82,716	73,958	123,780	120,473	107,081	70,770	129,302
Saudi Arabia	2,106,688	2,174,808	137,614	126,726	229,838	202,291	186,501	240,622	217,269
Turkey	242,228	252,029	25,238	21,351	20,710	20,089	22,042	31,035	19,524
United Arab Emirates	5,497,282	7,397,106	584,732	592,015	624,493	759,633	632,897	601,582	657,533
Others	877,898	1,758,984	85,311	96,992	152,798	216,646	231,040	155,195	242,852
R. Australia & New Zealand	576,749	655,079	41,930	39,089	88,945	56,101	44,400	53,449	76,401
Australia	511,782	587,439	36,609	34,172	80,082	46,090	32,622	47,893	68,338
New Zealand	64,483	67,032	5,308	4,871	8,852	9,989	11,726	5,426	8,061
Others	484	607	13	46	10	21	52	129	2
S. Others	1,040	1,466	38	5	47	13	99	103	5

4.20 Terms of Trade and Indices of Unit Value of Exports by Commodity Groups (1990-91= 100)

PERIOD	Terms of Trade	All Groups	Food and live Animals	Beverages and Tobacco	Crude Materials Inedible Except Fuels	Mineral Fuels and Lubricants	Chemicals	Manufactured Goods	Machinery and Transport Equipments	Misc. Manufactured Articles
2014-15	54.05	759.21	1,057.47	1,148.80	999.87	1,713.20	935.18	667.05	1,789.37	728.76
2015-16	56.33	705.03	944.46	1,217.42	920.79	1,092.25	1,000.41	607.39	1,873.58	774.38
2016-17	57.15	701.92	920.85	1,228.93	890.09	1,128.77	1,020.32	595.80	1,741.42	789.80
2014-15										
Jul-Sep	52.24	753.27	1,027.99	1,123.85	988.05	1,853.14	929.85	676.38	1,722.41	692.43
Oct-Dec	54.41	762.69	1,071.97	1,171.54	1,000.56	1,862.62	935.86	677.14	1,781.57	740.31
Jan-Mar	55.87	769.06	1,075.01	1,148.08	1,030.34	1,732.30	946.52	679.02	1,787.10	728.26
Apr-Jun	53.76	751.81	1,054.91	1,151.73	980.52	1,404.75	928.49	635.66	1,866.41	754.05
2015-16										
Jul-Sep	53.67	712.89	973.60	1,144.34	964.35	1,423.80	994.53	628.77	1,955.09	730.30
Oct-Dec	56.66	701.89	935.34	1,176.96	908.48	1,022.94	995.70	601.06	1,858.72	782.09
Jan-Mar	57.67	702.40	929.67	1,250.14	921.28	1,045.50	1,021.47	599.41	1,866.24	795.29
Apr-Jun	57.36	702.28	939.22	1,298.25	889.05	876.75	989.95	600.29	1,814.27	789.83
2016-17										
Jul-Sep	57.02	697.00	972.71	1,239.28	909.02	1,069.37	993.34	590.69	1,780.89	762.86
Oct-Dec	57.46	703.81	928.54	1,223.96	880.70	1,080.33	1,032.44	597.47	1,719.51	794.66
Jan-Mar	57.03	703.47	869.54	1,211.78	876.35	1,228.96	1,025.79	599.28	1,724.91	802.38
Apr-Jun	57.10	703.39	912.62	1,240.70	894.27	1,136.42	1,029.70	595.74	1,740.35	799.30

4.21 Indices of Unit Value of Imports by Commodity Groups (1990-91= 100)

PERIOD	All Groups	Food and live Animals	Beverages and Tobacco	Crude Materials inedible except Fuels	Mineral Fuels and Lubricants	Veg./ Animal Oils and Fats	Chemicals	Manufactured Goods	Machinery and Transport Equipments	Misc. Manufactured Articles
2014-15	1,404.72	891.28	1,620.65	1,048.08	1,550.37	1,037.83	1,256.50	1,026.39	1,985.27	1,854.42
2015-16	1,251.53	839.11	1,700.77	1,031.47	1,054.32	1,011.65	1,193.67	920.53	1,913.99	2,376.63
2016-17	1,228.18	832.10	1,760.91	1,021.82	918.74	1,089.67	1,274.01	926.40	1,873.88	2,481.97
2014-15										
Jul-Sep	1,441.98	882.91	1,551.52	1,050.88	1,810.84	1,040.06	1,218.48	993.38	1,889.96	1,701.41
Oct-Dec	1,401.74	893.21	1,590.81	1,065.79	1,530.17	1,056.54	1,254.97	1,030.50	1,969.44	1,807.08
Jan-Mar	1,376.64	895.47	1,651.30	1,039.03	1,443.70	1,006.23	1,256.20	1,044.23	1,995.28	1,892.80
Apr-Jun	1,398.50	893.54	1,688.98	1,036.61	1,416.75	1,048.50	1,296.34	1,037.49	2,086.41	2,016.39
2015-16										
Jul-Sep	1,328.20	819.90	1,670.50	994.97	1,377.68	1,032.17	1,175.87	905.12	1,926.97	2,242.88
Oct-Dec	1,238.67	824.90	1,691.32	1,109.19	1,049.07	1,028.06	1,141.86	929.56	1,882.96	2,372.44
Jan-Mar	1,218.01	865.60	1,747.67	1,012.94	871.68	978.62	1,210.14	924.91	1,934.80	2,434.43
Apr-Jun	1,224.39	846.04	1,693.71	1,008.77	918.85	1,007.74	1,246.79	922.51	1,911.24	2,456.76
2016-17										
Jul-Sep	1,222.36	816.59	1,708.34	1,025.79	908.12	1,026.36	1,251.62	925.94	1,888.38	2,512.37
Oct-Dec	1,224.89	833.16	1,782.93	1,030.31	855.04	1,164.61	1,309.72	976.44	1,863.58	2,643.00
Jan-Mar	1,233.52	838.92	1,794.93	1,003.50	979.56	1,080.97	1,269.88	878.71	1,864.85	2,327.08
Apr-Jun	1,231.95	839.73	1,757.42	1,027.69	932.24	1,086.72	1,264.82	924.51	1,878.69	2,445.41

Source : Pakistan Bureau of Statistics

4.22 Quantum Index Number of Exports by Commodity Groups (1990-91= 100)

PERIOD	All Groups	Food and live Animals	Beverages and Tobacco	Crude Materials Inedible except Fuels	Mineral Fuels and Lubricants	Chemicals	Manu- factured Goods	Machinery and Transport Equipments	Misc. Manufactured Articles
2014-15	195.45	224.40	100.30	264.75	176.22	973.58	181.68	3,964.39	201.19
2015-16	203.66	243.09	112.67	307.85	57.34	689.93	182.42	3,767.50	223.68
2016-17	205.76	246.90	172.45	213.20	85.00	476.05	187.01	3,457.04	235.71
2014-15									
Jul-Sep	201.64	189.93	90.87	389.05	361.14	952.31	183.05	4,343.64	202.72
Oct-Dec	205.65	266.45	51.38	333.54	123.62	1,240.35	187.56	3,283.23	194.18
Jan-Mar	197.74	235.44	74.56	246.63	85.83	790.96	183.40	3,932.27	205.36
Apr-Jun	176.75	205.76	184.39	89.77	134.28	910.69	172.69	4,298.43	202.5
2015-16									
Jul-Sep	187.10	183.52	68.33	285.36	76.97	1,029.59	176.67	3,211.01	194.95
Oct-Dec	193.24	251.95	54.14	218.76	50.57	778.60	177.06	2,601.52	204.57
Jan-Mar	241.90	260.86	216.18	176.79	98.65	475.58	184.09	3,531.11	383.46
Apr-Jun	206.13	233.33	148.74	198.79	31.70	483.95	189.54	5,475.29	238.30
2016-17									
Jul-Sep	189.72	161.56	101.01	178.53	162.00	560.84	185.85	5,242.08	217.09
Oct-Dec	204.38	230.40	60.64	229.57	66.56	535.91	190.00	3,267.99	228.32
Jan-Mar	222.94	344.66	375.12	230.59	60.11	330.08	185.81	1,406.28	261.12
Apr-Jun	205.99	250.96	153.01	214.11	51.33	477.37	186.39	3,911.82	236.30

4.23 Quantum Index Number of Imports by Commodity Groups (1990-91= 100)

PERIOD	All Groups	Food and live Animals	Beverages and Tobacco	Crude Materials inedible except Fuels	Mineral Fuels and Lubricants	Veg./ Animal Oils and Fats	Chemicals	Manufactured Goods	Machinery and Transport Equipments	Misc. Manu- factured Articles
2014-15	299.73	222.61	317.90	531.02	175.67	179.33	271.01	345.01	478.50	307.93
2015-16	273.06	287.46	628.07	157.60	221.25	266.35	319.43	584.63	405.89	273.06
2016-17	358.99	272.82	299.30	611.73	183.64	205.64	284.09	365.46	651.94	400.05
2014-15										
Jul-Sep	302.77	322.99	416.31	354.13	197.29	189.47	275.38	273.72	521.40	302.25
Oct-Dec	303.82	229.82	369.89	685.69	185.39	167.77	270.55	274.76	470.31	296.49
Jan-Mar	290.10	174.63	205.90	595.97	129.32	163.79	258.24	482.00	428.76	371.67
Apr-Jun	302.24	162.98	279.49	488.27	190.67	196.30	279.88	349.54	493.54	261.29
2015-16										
Jul-Sep	290.52	292.22	311.01	375.83	146.92	212.82	245.87	284.84	513.14	407.12
Oct-Dec	355.81	311.72	251.34	598.92	153.20	224.04	302.20	347.62	635.68	489.68
Jan-Mar	314.81	434.08	606.39	968.28	128.64	206.26	205.41	330.82	486.61	420.30
Apr-Jun	372.45	243.07	288.06	660.54	195.20	225.04	287.52	334.92	719.73	369.48
2016-17										
Jul-Sep	315.54	222.22	243.38	417.44	171.33	192.07	272.18	374.67	545.17	392.47
Oct-Dec	345.59	286.10	379.05	576.34	189.46	204.04	300.76	367.29	589.22	402.59
Jan-Mar	409.63	312.94	243.74	878.87	182.91	217.82	275.54	350.76	818.18	415.75
Apr-Jun	365.19	270.02	331.01	574.28	190.85	208.63	287.86	369.12	655.19	389.38

Source : Pakistan Bureau of Statistics