

6.1 Government of Pakistan Treasury Bills

Million Rupees									
	Jun-16	Jun-17	2017					2018	
			Jan	Feb	Oct	Nov	Dec	Jan	Feb
3 Months Treasury Bills									
Issue	40,899.8	287,915.3	173,925	581,490	1,497,491.0	1,133,073.9	622,938.3	1,559,211.4	2,239,416
Discount Allowed	556.9	3,969.6	2,357	7,937	20,646.7	15,622.2	8,588.8	21,498.6	31,994
Discharged	21,042.0	238,038.4	89,247	467,177	1,323,314.9	943,730.9	737,433.9	1,497,491.0	1,133,074
Discount Paid	298.3	3,263.1	1,206	6,376	18,244.1	13,011.7	10,167.4	20,647.7	15,622
Outstanding Balance	242,874.9	1,364,405.8	900,620	1,014,932	3,178,655.9	3,367,998.9	3,253,503.2	3,315,224.6	4,421,566
6 Months Treasury Bills									
Issue	161,548.7	222,002.7	490,016	449,623	34,823.4	181,240.7	77,953.7	-	-
Discount Allowed	4,696.6	6,653.9	14,503	13,406	1,043.7	5,432.2	2,336.4	-	-
Discharged	41,671.8	47,523.1	322,974	398,278	87,051.6	179,031.1	222,002.7	445,476.6	242,218
Discount Paid	1,312.1	1,416.5	9,348	11,706	2,608.0	5,366.0	6,653.9	13,352.9	7,259
Outstanding Balance	816,882.6	1,838,875.8	1,216,832	1,268,178	1,305,262.5	1,307,472.1	1,163,423.0	717,947.4	475,729
12 Months Treasury Bills									
Issue	129,847.6	5,652.8	130,461	215,515	-	-	-	-	-
Discount Allowed	7,711.2	340.7	7,732	12,849	-	-	-	-	-
Discharged	7,620.8	129,847.6	218,047	255,928	52,114.7	1,091.8	-	130,461.8	215,515
Discount Paid	519.4	7,711.2	13,472	15,870	3,074.0	64.8	-	7,732.8	12,849
Outstanding Balance	1,712,268.0	884,431.4	1,449,603	1,409,190	414,359.7	413,267.9	413,267.9	282,807.1	67,292

Source: Domestic Markets & Monetary Management Department SBP

Note: Six months Government of Pakistan Treasury Bills restarted w. e. f. June 1998 and 3 & 12 Months Government of Pakistan Treasury Bills restarted w.e.f July 1998.

6.2 Sale / Purchase of Treasury Bills under Open Market Operation by SBP with Banks

SALE

(Billion Rupees)

PERIODS	2013-14		2014-15		2015-16		2016-17		2017-18	
	Bid Amount		Bid Amount		Bid Amount		Bid Amount		Bid Amount	
	Offered	Accepted	Offered	Accepted	Offered	Accepted	Offered	Accepted	Offered	Accepted
July	161.5	142.4	173.7	166.7	169.5	169.5	-	-	-	-
August	763.3	725.2	-	-	-	-	138.0	109.0	-	-
September	913.0	689.8	-	-	54.5	21.0	-	-	63.0	38.0
October	72.8	54.0	-	-	41.5	28.0	179.7	95.5	113.8	105.0
November	702.4	668.0	-	-	-	-	-	-	91.5	84.5
December	-	-	-	-	63.3	43.0	178.7	150.0	-	-
January	-	-	-	-	-	-	-	-	343.0	305.1
February	173.3	129.1	122.9	122.6	-	-	59.0	20.9	-	-
March	103.0	69.0	-	-	121.0	95.1	-	-	-	-
April	53.0	35.0	351.2	303.1	116.9	61.9	-	-	-	-
May	72.0	54.2	160.3	137.8	120.5	83.6	-	-	-	-
June	330.3	289.1	59.3	46.5	66.8	44.3	51.6	40.0	-	-
Average										
per month	278.7	238.0	72.3	64.7	62.8	45.5	50.6	34.6	76.4	66.6
per day	9.3	7.9	2.4	2.2	2.1	1.5	1.7	1.2	2.5	2.2

PURCHASE

PERIODS	2013-14		2014-15		2015-16		2016-17		2017-18	
	Amount		Amount		Amount		Amount		Amount	
	Offered	Offered	Offered	Injected	Offered	Injected	Offered	Injected	Offered	Injected
July	694.8	631.3	380.6	342.7	4,335.1	4,200.5	6,965.6	6,655.1	6,181.3	5,797.7
August	-	-	220.6	183.3	4,637.3	4,553.5	3,951.0	3,873.5	6,066.4	5,940.3
September	-	-	506.2	414.7	6,602.8	5,818.4	6,206.9	5,870.9	7,881.6	7,733.5
October	189.5	136.3	633.8	603.8	7,058.8	6,668.1	4,024.4	3,960.4	6,245.0	5,968.4
November	234.3	121.5	1,183.6	1,161.1	5,432.5	5,318.9	3,242.3	3,096.9	6,454.0	6,252.5
December	397.6	241.1	2,198.8	2,147.7	6,465.0	6,121.8	4,551.0	4,234.6	8,943.3	8,590.5
January	459.5	263.0	3,058.2	3,007.4	4,863.4	4,598.6	4,099.7	3,878.5	4,612.4	4,390.3
February	359.10	348.10	2,915.7	2,850.7	5,585.2	5,253.8	4,127.9	3,953.7	5,946.7	5,522.7
March	860.6	520.1	4,484.6	4,290.6	7,165.9	6,908.0	5,537.5	5,373.8	-	-
April	1,152.0	1,033.7	4,249.7	4,053.6	6,258.7	6,108.9	5,270.7	5,195.4	-	-
May	1,641.7	1,431.5	3,509.4	3,462.4	5,158.8	5,105.8	5,374.6	5,278.7	-	-
June	212.7	199.4	2,515.9	2,506.9	7,564.2	6,943.7	7,385.0	7,049.8	-	-
Average										
per month	516.8	410.5	2,154.7	2,085.4	5,927.3	5,633.3	5,061.4	4,868.4	6,541.3	6,274.5
per day	17.2	13.7	71.8	69.5	197.6	187.8	168.7	162.3	218.0	209.1

Source: Domestic Markets & Monetary Management Department, SBP

6.3 SBP Overnight Repo/ Reverse Repo Facilities

Cash Accommodation

(Million Rupees)

PERIODS	2013-14		2014-15		2015-16		2016-17		2017-18	
	SBP Overnight Reverse Repo (Ceiling)	SBP Overnight Repo (Floor)	SBP Overnight Reverse Repo (Ceiling)	SBP Overnight Repo (Floor)	SBP Overnight Reverse Repo (Ceiling)	SBP Overnight Repo (Floor)	SBP Overnight Reverse Repo (Ceiling)	SBP Overnight Repo (Floor)	SBP Overnight Reverse Repo (Ceiling)	SBP Overnight Repo (Floor)
July	171,300	45,400	190,400	48,150	244,850	6,400	164,950	6,650	7,800	-
August	31,550	54,500	137,950	45,000	137,300	1,000	269,000	5,200	37,200	-
September	47,700	319,100	362,450	70,300	540,000	81,850	70,500	-	40,800	3,500
October	327,700	22,000	244,650	314,950	204,100	7,700	28,100	6,000	67,000	13,500
November	228,250	177,800	343,700	-	76,600	2,000	800	25,650	45,900	-
December	421,950	-	582,050	54,400	298,100	61,650	36,650	11,700	150,400	38,500
January	389,100	34,000	314,550	7,250	121,600	-	110,100	-	-	12,400
February	307,000	203,800	74,450	63,250	96,200	18,350	11,600	33,900	12,400	-
March	863,000	2,100	142,500	-	288,600	92,400	39,100	22,800		
April	423,050	8,000	139,650	87,250	77,900	-	45,000	61,800		
May	791,000	80,350	43,750	-	44,000	4,000	25,000	173,000		
June	83,150	137,200	118,850	38,900	625,500	255,000	134,850	18,650		
Average										
per month	340,396	90,354	224,579	60,788	229,563	44,196	77,971	30,446	45,188	8,488
per day	11,347	3,012	7,486	2,026	7,652	1,473	2,599	1,015	1,506	283

SBP Overnight Repo/ Reverse Repo Rates

(Percent per annum)

PERIODS	2013-14		2014-15		2015-16		2016-17		2017-18	
	SBP Reverse Repo Rate ¹ (Ceiling)	SBP Repo Rate ² (Floor)	SBP Reverse Repo Rate ¹ (Ceiling)	SBP Repo Rate ² (Floor)	SBP Reverse Repo Rate ¹ (Ceiling)	SBP Repo Rate ² (Floor)	SBP Reverse Repo Rate ¹ (Ceiling)	SBP Repo Rate ² (Floor)	SBP Reverse Repo Rate ¹ (Ceiling)	SBP Repo Rate ² (Floor)
July	9.0	6.5	10.0	7.5	7.00	5.00	6.25	4.25	6.25	4.25
August	9.0	6.5	10.0	7.5	7.00	5.00	6.25	4.25	6.25	4.25
September	9.5	7.0	10.0	7.5	6.50	4.50	6.25	4.25	6.25	4.25
October	9.5	7.0	10.0	7.5	6.50	4.50	6.25	4.25	6.25	4.25
November	10.0	7.5	9.5	7.0	6.50	4.50	6.25	4.25	6.25	4.25
December	10.0	7.5	9.5	7.0	6.50	4.50	6.25	4.25	6.25	4.25
January	10.0	7.5	8.5	6.0	6.50	4.50	6.25	4.25	6.50	4.50
February	10.0	7.5	8.5	6.0	6.50	4.50	6.25	4.25	6.50	4.50
March	10.0	7.5	8.0	5.5	6.50	4.50	6.25	4.25		
April	10.0	7.5	8.0	5.5	6.50	4.50	6.25	4.25		
May	10.0	7.5	7.0	5.0	6.25	4.25	6.25	4.25		
June	10.0	7.5	7.0	5.0	6.25	4.25	6.25	4.25		

Source: Domestic Markets & Monetary Management Department, SBP

NOTE:1. SBP 3-day repo rate was renamed as SBP reverse repo rate w.e.f. August 17, 2009. SBP reverse repo rate (also known as policy rate or discount rate) is the rate at which banks borrow from SBP on an overnight basis.

2.SBP Repo rate (introduced w.e.f. August 17, 2009) is the rate at which banks deposit their end-of-day excess cash with SBP on an overnight basis.

6.4 Auction of Government of Pakistan Market Treasury Bills

(Million Rupees)

AUCTION SETTLEMENT DATE	3 Months Treasury Bills				6 Months Treasury Bills				12 Months Treasury Bills			
	Amount Offered	Amount Accepted	Cut-off Yield (%)	Weighted Average (%)	Amount Offered	Amount Accepted	Cut-off Yield (%)	Weighted Average (%)	Amount Offered	Amount Accepted	Cut-off Yield (%)	Weighted Average (%)
2017												
2-Feb-17	385,376	297,326	5.9463	5.9211	269,956	248,956	5.9896	5.9714	104,535	75,535	5.9935	5.9489
16-Feb-17	379,251	292,101	5.9463	5.9417	226,073	214,073	5.9896	5.9893	155,829	152,829	5.9935	5.9927
2-Mar-17	264,139	196,776	5.9463	5.9463	223,819	206,069	5.9896	5.9896	5,038	3,038	5.9935	5.9935
16-Mar-17	199,202	146,552	5.9463	5.9463	170,809	146,309	5.9896	5.9896	20,775	Bids Rej. No Bids Rec.	Bids Rej. No Bids Rec.	Bids Rej. No Bids Rec.
30-Mar-17	100,249	94,749	5.991	5.9718	108,054	71,054	6.0109	5.9934	975			
13-Apr-17	284,838	270,838	5.991	5.9753	68,238	Bids Rej.	Bids Rej.	Bids Rej.	2,825	Bids Rej.	Bids Rej.	Bids Rej.
27-Apr-17	287,575	285,475	5.991	5.9851	99,660	89,660	6.0109	6.0082	36,819	7,819	6.027	5.9992
11-May-17	300,376	275,526	5.991	5.991	126,951	99,451	6.0109	6.0109	7,050	3,550	6.0273	6.0273
25-May-17	274,080	259,480	5.991	5.991	111,446	84,946	6.0109	6.0109	23,252	3,252	6.0499	6.0499
8-Jun-17	73,932	28,932	5.991	5.9904	193,368	133,368	6.0109	6.0109	5,438	2,938	6.0499	6.0499
22-Jun-17	309,953	262,953	5.991	5.991	113,789	95,289	6.0109	6.0109	5,056	3,056	6.0386	6.0386
6-Jul-17	462,988	417,238	5.991	5.991	156,013	127,013	6.0109	6.0109	17,666	10,666	6.0386	6.0386
20-Jul-17	761,148	753,148	5.991	5.9909	332,314	331,814	6.0109	6.0109	16,814	15,857	6.0386	6.0381
03-Aug-17	605,111	588,411	5.9910	5.9902	142,958	138,708	6.0109	6.0093	25,887	19,637	5.9910	6.0109
17-Aug-17	539,264	515,264	5.9910	5.9910	122,519	110,769	6.0109	6.0109	1,326	Bids Rej.	5.9910	6.0109
31-Aug-17	447,978	441,478	5.9910	5.9910	93,972	86,972	6.0109	6.0109	2,697	697	5.9910	6.0109
14-Sep-17	358,166	351,466	5.9910	5.9910	24,296	19,796	6.0109	6.0109	6,271	6,271	5.9910	6.0109
28-Sep-17	402,636	396,136	5.9910	5.9910	100,390	80,390	6.0109	6.0109	3,853	3,853	5.9910	6.0109
12-Oct-17	842,848	806,848	5.9910	5.9910	6,266	6,266	6.0109	6.0109	No Bid Rec	No Bid Rec	No Bid Rec	No Bid Rec
26-Oct-17	941,746	711,290	5.9910	5.9910	29,602	29,602	6.0109	6.0109	No Bid Rec	No Bid Rec	No Bid Rec	No Bid Rec
09-Nov-17	935,032	628,474	5.9910	5.9910	82,106	82,106	6.0109	6.0109	No Bid Rec	No Bid Rec	No Bid Rec	No Bid Rec
23-Nov-17	788,797	520,223	5.9910	5.9909	104,567	104,567	6.0109	6.0109	No Bid Rec	No Bid Rec	No Bid Rec	No Bid Rec
07-Dec-17	532,245	530,745	5.9910	5.9910	85,290	80,290	6.0109	6.0109	5,000	Bid Rejected	Bid Rejected	Bid Rejected
21-Dec-17	202,532	100,782	5.9910	5.9910	No Bid Rec	No Bid Rec	No Bid Rec	No Bid Rec	No Bid Rec	No Bid Rec	No Bid Rec	No Bid Rec
2018												
04-Jan-18	580,227	495,777	5.9910	5.9910	No Bid Rec	No Bid Rec	No Bid Rec	No Bid Rec	No Bid Rec	No Bid Rec	No Bid Rec	No Bid Rec
18-Jan-18	1,137,932	1,084,932	5.9910	5.9910	No Bid Rec	No Bid Rec	No Bid Rec	No Bid Rec	No Bid Rec	No Bid Rec	No Bid Rec	No Bid Rec
01-Feb-18	1,879,616	1,170,046	6.2144	6.2018	No Bid Rec	No Bid Rec	No Bid Rec	No Bid Rec	No Bid Rec	No Bid Rec	No Bid Rec	No Bid Rec
15-Feb-18	1,249,939	1,101,364	6.2144	6.2143	50,629	Bid Rej	Bid Rej	Bid Rej	No Bid Rec	No Bid Rec	No Bid Rec	No Bid Rec

Source: Domestic Markets & Monetary Management Department, SBP

6.5 Auction of Pakistan Investment Bonds (PIBs)

(Million Rupees)							
AUCTION SETTLEMENT DATE	Tenure	Coupon Rate (%)	Amount Offered	Amount Accepted	Price Accepted = Rs.100	Cut-off Yield Accepted (%)	Weighted Yield Average Accepted (%)
20-Apr-17	3-Years	7.00	21,170.00	-	-	-	-
	5-Years	7.75	6,951.00	-	-	-	-
	10-Years	8.75	2,736.00	-	-	-	-
	20-Years	10.75	No Bid Rec	-	-	-	-
18-May-17	3-Years	7.00	54,924.50	33,864.00	101.40	6.4060	6.3992
	5-Years	7.75	17,951.00	5,238.50	103.31	6.8974	6.8902
	10-Years	8.75	8,808.00	1,114.00	105.39	7.9358	7.9358
	20-Years	10.75	No Bid Rec	-	-	-	-
15-Jun-17	3-Years	7.00	73,961.50	68,322.90	101.37	6.4050	6.4043
	5-Years	7.75	7,200.00	3,500.00	103.27	6.8974	6.8952
	10-Years	8.75	8,910.00	3,210.00	105.37	7.9358	7.9356
	20-Years	10.75	No Bid Rec	-	-	-	-
27-Jul-17	3-Years	7.00	34,891.00	23,376.00	101.30	6.4091	6.4029
	5-Years	7.75	15,075.00	10,150.00	103.20	6.8961	6.8960
	10-Years	8.75	23,190.00	22,095.00	105.32	7.9360	7.9359
	20-Years	10.75	No Bid Rec	-	-	-	-
24-Aug-17	3-Years	7.00	19,835.00	-	-	-	-
	5-Years	7.75	2,500.00	-	-	-	-
	10-Years	8.75	3,009.00	-	-	-	-
	20-Years	10.75	No Bid Re.	-	-	-	-
21-Sep-17	3-Years	7.00	2,825.00	-	-	-	-
	5-Years	7.75	750.00	-	-	-	-
	10-Years	8.75	2,042.40	-	-	-	-
	20-Years	10.75	No Bid Re.	-	-	-	-
19-Oct-17	3-Years	7.00	21,600.00	-	-	-	-
	5-Years	7.75	1,500.00	-	-	-	-
	10-Years	8.75	1,524.00	-	-	-	-
	20-Years	10.75	No Bid Rec	-	-	-	-
16-Nov-17	3-Years	7.00	18,900.00	-	-	-	-
	5-Years	7.75	2,000.00	-	-	-	-
	10-Years	8.75	2,624.00	-	-	-	-
	20-Years	10.75	-	-	-	-	-
14-Dec-17	3-Years	7.00	3,500.00	-	-	-	-
	5-Years	7.75	500.00	-	-	-	-
	10-Years	8.75	2,124.00	-	-	-	-
	20-Years	10.75	-	-	-	-	-
25-Jan-18	3-Years	7.00	31,850.00	-	-	-	-
	5-Years	7.75	-	-	-	-	-
	10-Years	8.75	1,436.60	-	-	-	-
	20-Years	10.75	-	-	-	-	-

Source: Domestic Markets & Monetary Management Department, SBP

6.6 KIBOR

(Percent per annum)

PERIODS	1 Week		2 Weeks		1 Month		3 Months		6 Months		9 Months		12 Months			
	Bid	Offer	Bid	Offer	Bid	Offer	Bid	Offer	Bid	Offer	Bid	Offer	Bid	Offer		
	2017	Jan	Month Average	5.73	6.23	5.75	6.25	5.75	6.25	5.84	6.09	5.87	6.12	5.88	6.38	5.91
		End-Month	5.74	6.24	5.76	6.26	5.76	6.26	5.84	6.09	5.87	6.12	5.88	6.38	5.90	6.40
	Feb	Month Average	5.73	6.23	5.75	6.25	5.76	6.26	5.84	6.09	5.88	6.13	5.89	6.39	5.91	6.41
		End-Month	5.75	6.25	5.75	6.25	5.76	6.26	5.82	6.07	5.87	6.12	5.90	6.40	5.91	6.41
	Mar	Month Average	5.73	6.23	5.75	6.25	5.76	6.26	5.83	6.08	5.88	6.13	5.90	6.40	5.91	6.41
		End-Month	5.76	6.26	5.76	6.26	5.77	6.27	5.87	6.12	5.91	6.16	5.92	6.42	5.94	6.44
	Apr	Month Average	5.75	6.25	5.76	6.26	5.77	6.27	5.89	6.14	5.91	6.16	5.94	6.44	5.97	6.47
		End-Month	5.76	6.26	5.77	6.27	5.79	6.29	5.89	6.14	5.92	6.17	5.94	6.44	5.97	6.47
	May	Month Average	5.73	6.23	5.75	6.25	5.77	6.27	5.88	6.13	5.90	6.15	5.93	6.43	5.95	6.45
		End-Month	5.74	6.24	5.75	6.25	5.77	6.27	5.89	6.14	5.91	6.16	5.92	6.42	5.94	6.44
	Jun	Month Average	5.73	6.23	5.75	6.25	5.77	6.27	5.89	6.14	5.90	6.15	5.94	6.44	5.96	6.46
		End-Month	5.73	6.23	5.75	6.25	5.76	6.26	5.89	6.14	5.90	6.15	5.94	6.44	5.96	6.46
	Jul	Month Average	5.71	6.21	5.75	6.25	5.77	6.27	5.89	6.14	5.89	6.14	5.94	6.44	5.96	6.46
		End-Month	5.71	6.21	5.75	6.25	5.78	6.28	5.89	6.14	5.90	6.15	5.94	6.44	5.96	6.46
	Aug	Month Average	5.70	6.20	5.73	6.23	5.76	6.26	5.89	6.14	5.90	6.15	5.94	6.44	5.96	6.46
		End-Month	5.68	6.18	5.72	6.22	5.76	6.26	5.89	6.14	5.90	6.15	5.94	6.44	5.96	6.46
	Sep	Month Average	5.70	6.20	5.73	6.23	5.76	6.26	5.90	6.15	5.91	6.16	5.95	6.45	5.97	6.47
		End-Month	5.70	6.20	5.74	6.24	5.76	6.26	5.90	6.15	5.91	6.16	5.95	6.45	5.97	6.47
	Oct	Month Average	5.70	6.20	5.73	6.23	5.76	6.26	5.90	6.15	5.92	6.17	5.96	6.46	5.97	6.47
		End-Month	5.73	6.23	5.75	6.25	5.77	6.27	5.89	6.14	5.92	6.17	5.95	6.45	5.96	6.46
	Nov	Month Average	5.71	6.21	5.74	6.24	5.77	6.27	5.90	6.15	5.93	6.18	5.96	6.46	5.97	6.47
		End-Month	5.71	6.21	5.75	6.25	5.76	6.26	5.91	6.16	5.94	6.19	5.96	6.46	5.98	6.48
	Dec	Month Average	5.73	6.23	5.76	6.26	5.79	6.29	5.92	6.17	5.96	6.21	5.98	6.48	5.99	6.49
		End-Month	5.76	6.26	5.78	6.28	5.81	6.31	5.91	6.16	5.96	6.21	5.99	6.49	6.00	6.50
2018	Jan	Month Average	5.73	6.23	5.78	6.28	5.81	6.31	5.94	6.19	5.98	6.23	6.01	6.51	6.03	6.53
		End-Month	5.91	6.41	5.95	6.45	5.98	6.48	6.12	6.37	6.18	6.43	6.20	6.70	6.24	6.74
	Feb	Month Average	5.92	6.42	5.96	6.46	5.99	6.49	6.11	6.36	6.19	6.44	6.21	6.71	6.24	6.74
		End-Month	5.92	6.42	5.96	6.46	6.00	6.50	6.13	6.38	6.21	6.46	6.22	6.72	6.26	6.76

KIBOR :Karachi Interbank Offered Rate

Source: Reuters

Archive Link: http://www.sbp.org.pk/ecodata/kibor_index.asp

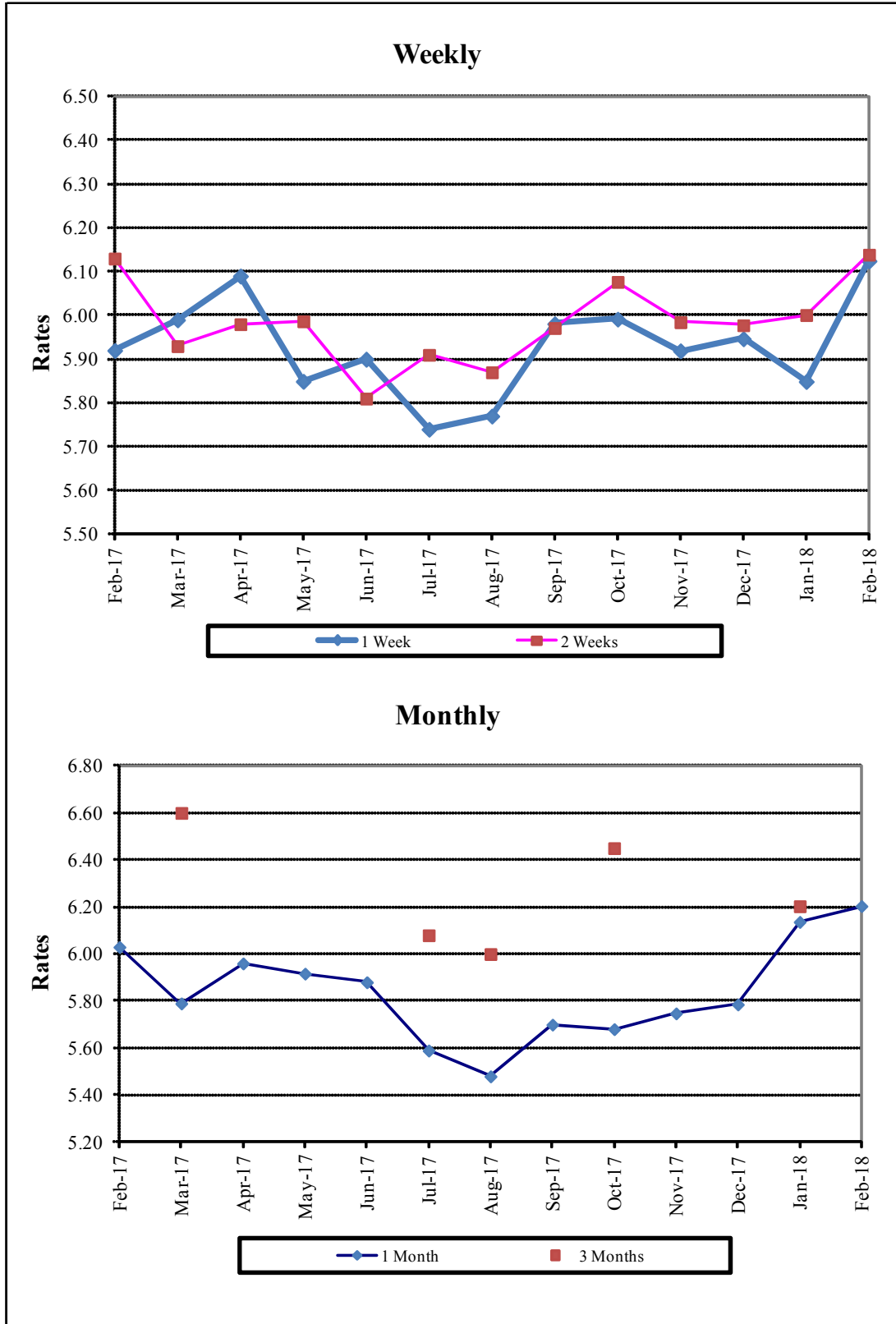
6.7 Inter-Bank Weighted Average Call Rates

		(Per Annum)					
PERIODS		Overnight	1 Week	2 Weeks	1 Month	3 Months	6 Months
2017	Jan	5.85	5.90	5.88	5.85	-	5.65
	Feb	5.74	5.92	6.13	6.03	-	-
	Mar	5.90	5.99	5.93	5.79	6.60	5.77
	Apr	5.87	6.09	5.98	5.96	-	-
	May	5.78	5.85	5.99	5.92	-	6.35
	Jun	5.79	5.90	5.81	5.88	-	-
	Jul	5.77	5.74	5.91	5.59	6.08	-
	Aug	5.76	5.77	5.87	5.48	6.00	5.80
	Sep	5.84	5.98	5.97	5.70	-	5.81
	Oct	5.82	5.99	6.08	5.68	6.45	5.81
	Nov	5.77	5.92	5.98	5.75	-	-
	Dec	5.95	5.95	5.98	5.79	-	-
2018	Jan	5.73	5.85	6.00	6.14	6.20	-
	Feb	6.01	6.12	6.14	6.20	-	-

Source: Domestic Markets & Monetary Management Department, SBP

Note: Weighted Average Call Rates of all the call deals executed during the month.

Inter- Bank Weighted Average Call Rates



6.8 SBP Mark to Market Rates Major Currencies

Date	US Dollar			Euro			Japanese Yen			UK Pound Sterling		
	Ready	1Week	1 Month	Ready	1Week	1 Month	Ready	1Week	1 Month	Ready	1Week	1 Month
1-Feb-18	110.5538	110.6181	110.7630	137.5234	137.6645	138.0282	1.0087	1.0098	1.0122	157.6553	157.7887	158.1164
2-Feb-18	110.5594	110.5675	110.7041	138.0334	138.1047	138.4580	1.0061	1.0066	1.0089	157.1602	157.2132	157.5290
6-Feb-18	110.5478	110.6028	110.7342	137.1787	137.3063	137.6493	1.0129	1.0138	1.0161	154.5845	154.7002	155.0041
7-Feb-18	110.5508	110.6055	110.7459	136.7127	136.8393	137.1931	1.0144	1.0152	1.0177	154.0415	154.1567	154.4722
8-Feb-18	110.5485	110.5932	110.7303	135.2727	135.3931	135.7312	1.0082	1.0090	1.0114	153.1871	153.2933	153.5976
9-Feb-18	110.5517	110.6015	110.7398	135.5640	135.6831	136.0335	1.0127	1.0135	1.0160	154.2749	154.3839	154.6992
12-Feb-18	110.5571	110.6117	110.7453	135.6702	135.7966	136.1472	1.0168	1.0177	1.0201	153.0995	153.2156	153.5272
13-Feb-18	110.5557	110.6085	110.7424	136.3317	136.4539	136.7970	1.0269	1.0278	1.0302	153.5231	153.6350	153.9410
14-Feb-18	110.5492	110.6067	110.7420	136.7106	136.8399	137.1897	1.0288	1.0297	1.0322	153.4367	153.5542	153.8632
15-Feb-18	110.5448	110.6194	110.7600	138.1147	138.2666	138.6247	1.0396	1.0407	1.0432	155.3431	155.4846	155.8028
16-Feb-18	110.5551	110.6289	110.7711	138.5643	138.7160	139.0808	1.0437	1.0447	1.0473	156.0652	156.2055	156.5264
19-Feb-18	110.5726	110.6355	110.7748	137.1267	137.2632	137.6186	1.0369	1.0378	1.0404	154.7575	154.8809	155.1932
20-Feb-18	110.5756	110.6139	110.7447	136.5996	136.7076	137.0505	1.0316	1.0323	1.0347	154.2530	154.3434	154.6424
21-Feb-18	110.5778	110.6131	110.7401	136.2373	136.3410	136.6803	1.0285	1.0292	1.0316	154.3334	154.4226	154.7186
22-Feb-18	110.5773	110.5882	110.6999	135.8165	135.8895	136.2101	1.0307	1.0312	1.0334	153.7466	153.8009	154.0763
23-Feb-18	110.5790	110.5826	110.6696	136.1503	136.2140	136.5071	1.0349	1.0353	1.0373	154.5175	154.5609	154.8017
26-Feb-18	110.5851	110.5992	110.6847	136.4787	136.5560	136.8609	1.0372	1.0378	1.0399	155.3887	155.4466	155.6947
27-Feb-18	110.5813	110.6016	110.6844	136.3412	136.4263	136.8070	1.0327	1.0333	1.0360	154.4821	154.5478	154.8653
28-Feb-18	110.5774	110.6122	110.7128	135.1200	135.2219	135.6210	1.0325	1.0332	1.0361	153.7799	153.8632	154.2057

Source: Domestic Markets & Monetary Management Department, SBP

6.8 SBP Mark to Market Rates Major Currencies

Date	Swiss Frank			Australian Dollar			Saudi Arabian Riyal			Kuwaiti Dinar		
	Ready	1Week	1 Month	Ready	1Week	1 Month	Ready	1Week	1 Month	Ready	1Week	1 Month
1-Feb-18	118.6709	118.8030	119.1452	88.6199	88.6672	88.7757	29.4791	29.4974	29.5364	368.9248	369.1430	369.6243
2-Feb-18	119.0731	119.1443	119.4761	88.2651	88.2681	88.3697	29.4817	29.4845	29.5219	368.9803	369.0165	369.4690
6-Feb-18	118.4483	118.5677	118.8905	87.0619	87.1027	87.1990	29.4782	29.4941	29.5295	368.6709	368.8705	369.2999
7-Feb-18	118.0090	118.1272	118.4582	86.9814	87.0198	87.1217	29.4790	29.4948	29.5326	368.5828	368.7738	369.2457
8-Feb-18	116.8465	116.9612	117.2770	86.3494	86.3797	86.4792	29.4776	29.4902	29.5277	368.0718	368.2297	368.6830
9-Feb-18	117.7460	117.8588	118.1887	86.1253	86.1613	86.2619	29.4781	29.4920	29.5292	368.3522	368.5452	369.0210
12-Feb-18	117.8082	117.9269	118.2550	86.4557	86.4944	86.5904	29.4799	29.4951	29.5313	368.2353	368.4354	368.8989
13-Feb-18	118.3553	118.4711	118.7984	87.0460	87.0837	87.1815	29.4795	29.4942	29.5305	368.3655	368.5714	369.0246
14-Feb-18	118.4054	118.5261	118.8571	86.9635	87.0054	87.1040	29.4778	29.4937	29.5304	368.6263	368.8403	369.3220
15-Feb-18	119.5596	119.7007	120.0392	87.9384	87.9947	88.0989	29.4766	29.4971	29.5352	369.2520	369.5256	370.0310
16-Feb-18	120.2929	120.4337	120.7773	88.2285	88.2835	88.3884	29.4782	29.4985	29.5368	369.6879	369.9529	370.4742
19-Feb-18	119.0489	119.1756	119.5107	87.5846	87.6306	87.7324	29.4833	29.5006	29.5384	369.0861	369.3266	369.8508
20-Feb-18	118.4147	118.5168	118.8405	87.3105	87.3376	87.4329	29.4849	29.4957	29.5311	368.8498	369.0172	369.4769
21-Feb-18	117.9874	118.0866	118.4073	86.8644	86.8903	86.9833	29.4854	29.4955	29.5299	368.6479	368.8008	369.2489
22-Feb-18	117.8360	117.9090	118.2135	86.3608	86.3681	86.4508	29.4853	29.4888	29.5192	368.4989	368.5793	368.9503
23-Feb-18	118.4183	118.4836	118.7638	86.4672	86.4684	86.5317	29.4854	29.4873	29.5105	368.7503	368.7983	369.1188
26-Feb-18	118.4566	118.5335	118.8275	87.0637	87.0741	87.1399	29.4874	29.4923	29.5159	368.9924	369.0713	369.3979
27-Feb-18	118.0415	118.1244	118.4975	86.6736	86.6888	86.7537	29.4856	29.4918	29.5151	368.7703	368.8565	369.1826
28-Feb-18	117.3297	117.4282	117.8159	86.3720	86.3985	86.4781	29.4849	29.4954	29.5246	368.2414	368.3818	368.7538

Source: Domestic Markets & Monetary Management Department, SBP

Archive Link: <http://www.sbp.org.pk/ecodata/rates/m2m/M2M-History.asp>

6.9 Secondary Market Transactions in Government Securities

(Billion Rupees)

SECURITIES / TRANSACTIONS	2017											2018		
	Feb	Mar	Apr	May	Jun	Jul	Aug	Sep	Oct	Nov	Dec	Jan	Feb	
PIBs														
Purchases	2,520.5	2,705.6	5,354.8	3,067.1	3,413.3	2,427.3	2,166.5	2,712.5	2,328.0	2,445.2	3,311.9	2,223.4	2,050.2	
Non Banks	Repo	11.8	4.8	1.8	4.1	3.1	7.5	4.6	10.1	4.8	3.7	5.1	5.2	3.1
	outright	36.5	33.3	43.3	32.3	16.3	74.7	28.4	51.0	45.5	45.6	25.8	65.9	40.9
Banks/PDs	Repo	162.9	210.7	120.2	204.6	116.9	139.3	123.6	77.8	109.4	68.0	105.2	156.9	56.3
	outright	256.3	283.1	507.5	207.9	170.2	299.1	100.9	174.7	165.1	158.5	183.0	334.2	192.9
SBP	Repo	2,053.1	2,173.7	4,682.1	2,618.2	3,106.7	1,906.7	1,909.0	2,398.9	2,003.3	2,169.4	2,992.7	1,661.3	1,756.9
Sales		2,520.5	2,705.6	5,354.8	3,067.1	3,413.3	2,427.3	2,166.5	2,712.5	2,328.0	2,445.2	3,311.9	2,223.4	2,050.2
Non Banks	Repo	59.3	92.3	84.8	101.9	33.8	26.2	22.7	15.1	25.1	12.3	8.1	1.2	5.4
	outright	28.5	88.7	98.7	60.5	35.6	30.6	14.7	50.5	34.4	43.6	41.5	24.8	35.9
Banks/PDs	Repo	2,168.5	2,297.0	4,719.3	2,725.0	3,192.9	2,027.3	2,014.4	2,471.7	2,092.4	2,228.8	3,095.0	1,822.2	1,810.9
	outright	264.2	227.7	452.0	179.7	150.9	343.2	114.6	175.2	176.2	160.5	167.3	375.2	198.0
SBP	Repo	-	-	-	-	-	-	-	-	-	-	-	-	-
Net Position		-	-	-	-	-	-	-	-	-	-	-	-	-
Treasury Bills														
Purchases		4,574.7	5,391.0	4,743.2	5,886.5	6,829.6	6,704.7	8,074.0	8,904.6	8,399.2	8,545.7	9,585.7	7,208.3	7,387.9
Non Banks	Repo	72.1	53.4	24.5	82.8	84.5	50.9	59.4	64.2	68.6	85.0	68.1	65.5	98.9
	outright	254.9	174.0	52.0	188.7	114.4	287.4	278.5	138.6	361.3	254.3	206.5	375.7	410.6
Banks/PDs	Repo	1,869.6	1,231.9	1,490.4	1,869.6	1,870.2	1,418.9	1,695.8	1,646.3	1,793.4	1,958.4	2,003.0	2,257.4	1,737.1
	outright	832.9	692.6	289.2	1,060.0	682.6	1,048.6	1,973.7	1,680.1	2,143.8	2,119.1	1,559.9	1,780.7	1,363.2
SBP	Repo	1,545.2	3,239.2	2,887.1	2,685.5	4,077.9	3,898.8	4,066.7	5,375.4	4,032.1	4,129.0	5,748.2	2,729.0	3,778.2
Sales		4,574.7	5,391.0	4,743.2	5,886.5	6,829.6	6,704.7	8,074.0	8,904.6	8,399.2	8,545.7	9,585.7	7,208.3	7,387.9
Non Banks	Repo	103.1	130.6	72.6	153.0	68.0	128.6	117.1	76.5	80.7	94.1	108.1	76.0	97.5
	outright	79.9	145.3	58.2	118.6	153.0	75.6	140.5	150.3	126.8	164.8	215.2	164.4	194.3
Banks/PDs	Repo	2,946.1	4,371.0	4,017.4	4,311.8	5,906.0	5,240.0	5,704.8	6,967.8	5,695.0	5,993.8	7,464.6	4,658.3	5,516.6
	outright	1,008.0	721.3	283.0	1,130.1	644.0	1,260.4	2,111.6	1,668.4	2,378.3	2,208.6	1,551.3	1,992.1	1,579.4
SBP	Repo	437.7	22.8	312.1	173.0	58.7	-	-	41.5	118.5	84.5	246.5	317.5	-
Net Position		-	-	-	-	-	-	-	-	-	-	-	-	-

PDs: Primary Dealers

Source: Domestic Markets & Monetary Management Department, SBP

Note: Month-wise volume of repo/outright transactions during the month.