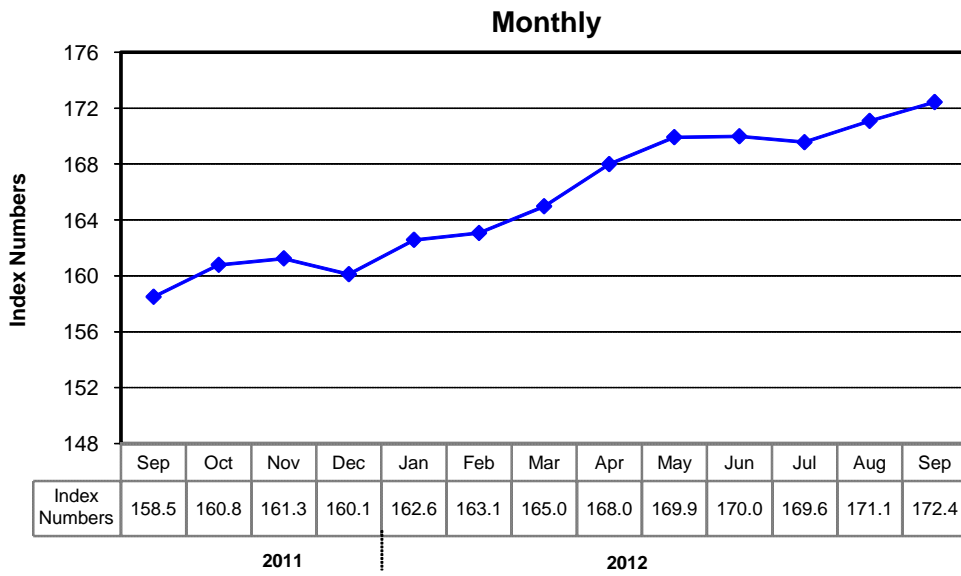
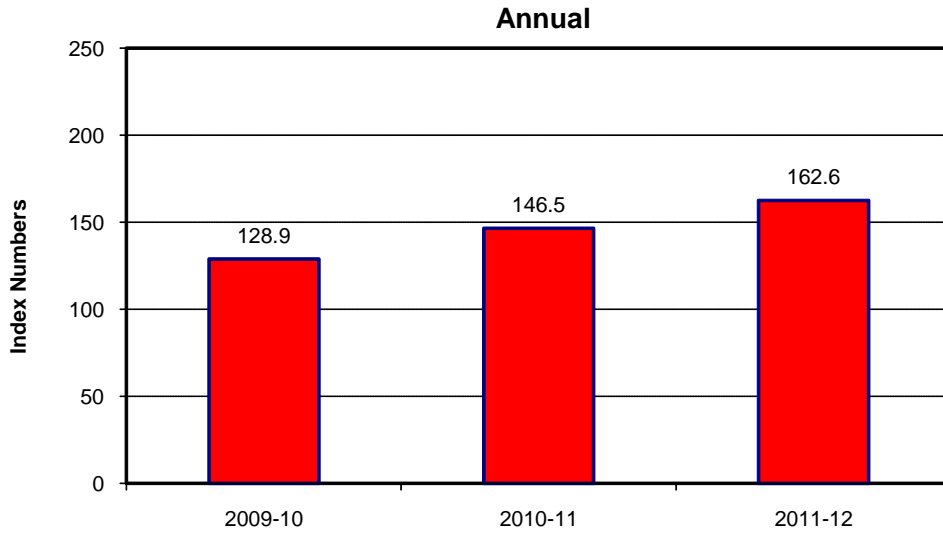


8.1 Combined Consumer Price Index Numbers By Commodity Groups - All Urban (2007-08=100)

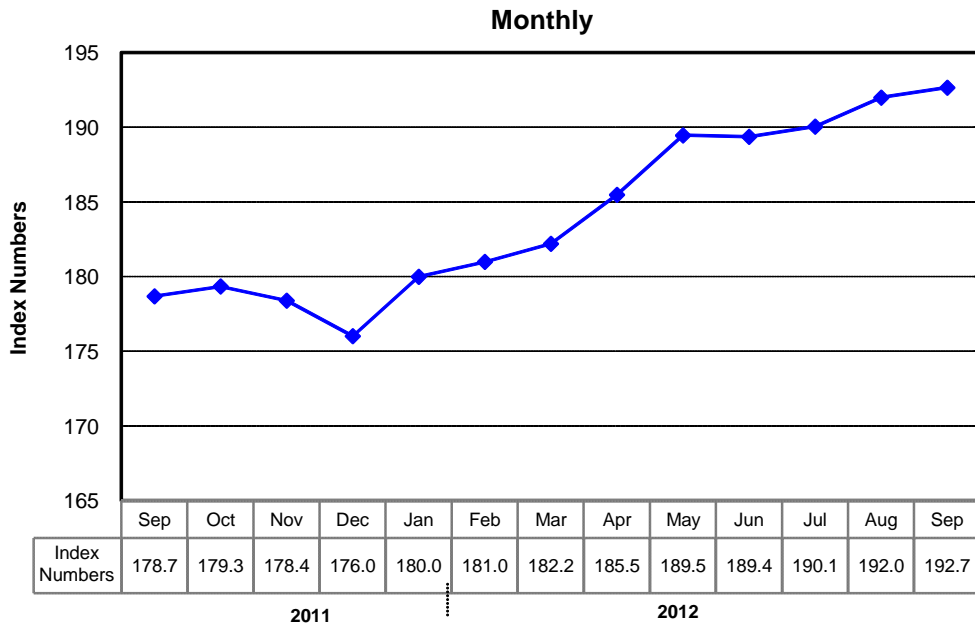
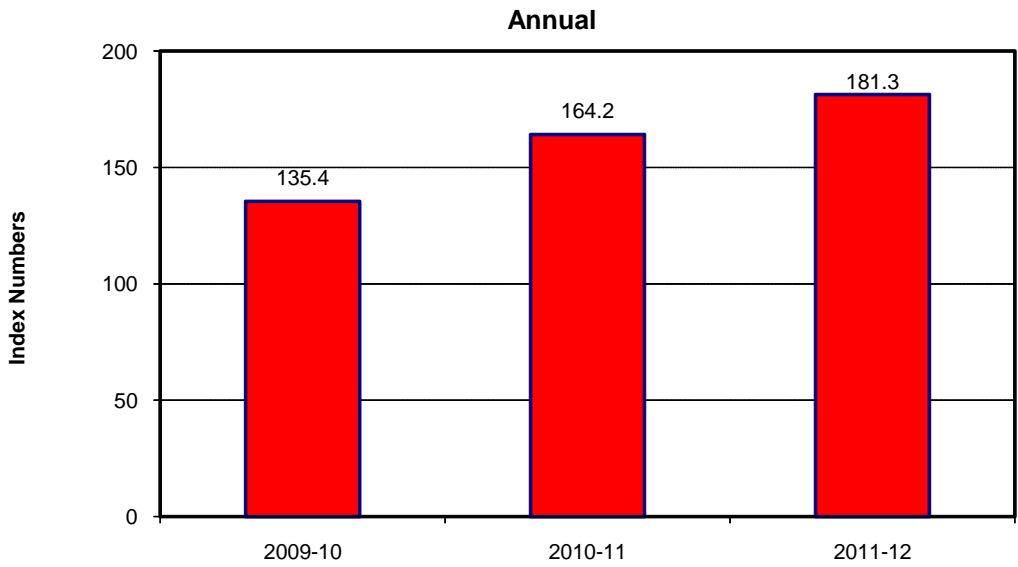
YEAR / MONTH	General	Food And Non- Alcoholic Beverages	Alcoholic Beverages and Tobacco	Clothing and Footwear	Housing Water, Elec, Gas and other Fuels	Furnishing & Household Equip. Mai- ntance etc	Health	Transport	Communi- cation	Recre- ation and Culture	Educate- ion	Resta- urants And Hotels	Misc.	
2009-10	128.85	139.10	136.71	119.19	122.14	123.89	114.32	132.79	109.65	127.87	119.39	140.36	133.63	
2010-11	146.45	164.61	151.64	133.32	135.27	135.59	123.79	149.01	122.47	134.62	128.17	164.04	152.45	
2011-12	162.57	182.77	165.01	153.45	146.17	160.28	137.97	171.39	122.93	145.35	143.83	185.82	181.47	
2011	Sep.	158.50	180.91	161.56	146.68	141.80	149.49	133.64	162.97	123.33	139.53	140.24	180.17	177.73
	Oct.	160.79	184.02	161.57	148.92	143.95	154.18	135.22	165.39	123.37	140.30	140.35	180.73	176.45
	Nov.	161.25	184.17	161.67	150.36	144.03	157.52	135.85	165.16	123.19	140.74	140.91	182.32	179.71
	Dec.	160.12	179.79	161.68	151.61	144.16	160.35	137.16	166.18	123.10	141.43	140.80	182.94	180.79
2012	Jan.	162.58	182.60	161.68	153.60	147.43	162.82	138.53	168.41	122.32	141.98	141.09	185.23	182.60
	Feb.	163.07	181.19	161.27	154.19	147.59	165.48	139.60	174.98	122.34	143.03	143.82	188.82	186.70
	Mar.	164.98	183.98	163.53	159.35	147.65	166.88	141.00	178.37	122.42	144.41	145.10	191.63	188.59
	Apr.	168.00	188.00	168.74	161.68	149.07	168.78	141.74	185.94	122.36	146.51	151.36	192.76	188.70
	May	169.93	188.29	169.22	163.22	153.27	171.52	144.07	185.93	122.38	163.95	151.31	193.79	188.15
	Jun.	169.99	187.05	188.05	164.08	153.35	173.20	147.42	182.98	123.62	164.37	152.28	195.10	190.51
	Jul	169.57	190.58	189.36	165.67	147.92	174.01	149.84	178.58	123.56	164.63	152.71	196.24	190.67
	Aug.	171.09	192.43	189.91	167.23	147.95	174.05	152.39	186.61	123.56	165.19	153.60	196.56	192.44
	Sep.	172.44	193.80	190.34	168.51	147.99	175.40	153.94	194.25	123.56	165.24	153.87	197.85	195.65

Source : Pakistan Bureau of Statistics

Index Numbers of Consumer Prices (2007-08=100)



Index Numbers of Wholesale Prices (2007- 08=100)



8.2 Index Numbers of Wholesale Prices by Commodity Groups (2007-08=100)

YEAR / MONTH	General	Agriculture Forestry & Fishery Products	Ores & Minerals, Electricity Gas & Water	Food Products, Beverages and Tobacco, Textiles, Apparel and Leather Products	Other Transportable Goods except Metal Products, Machinery and Equipments	Metal Product Machinery & Equipment
2009-10	135.40	142.02	139.76	135.02	135.41	111.10
2010-11	164.17	183.20	159.13	166.49	155.77	128.10
2011-12	181.29	185.03	182.74	176.07	194.64	152.55
2011						
Sep.	178.68	190.20	170.24	176.66	184.43	148.70
Oct.	179.34	189.95	170.17	177.12	186.58	150.03
Nov.	178.39	184.98	170.09	175.63	189.50	151.66
Dec.	176.01	178.32	170.51	170.36	192.97	153.46
2012						
Jan.	179.99	180.98	185.61	172.47	196.36	154.15
Feb.	180.99	179.07	187.55	173.34	200.50	154.87
Mar.	182.20	178.44	188.10	174.81	204.15	155.23
Apr.	185.48	183.68	188.10	177.32	208.92	156.18
May	189.46	185.78	214.79	179.06	207.39	156.46
Jun.	189.37	189.25	215.23	180.94	199.83	157.22
Jul.	190.05	197.57	206.19	182.41	195.56	158.63
Aug.	191.99	196.79	207.36	183.90	202.63	158.17
Sep.	192.66	194.63	207.86	184.53	207.14	157.74

Source : Pakistan Bureau of Statistics

8.3 Combined Sensitive Price Indicator (SPI) by Income Groups (2007-08 =100)

YEAR / MONTH	INCOME GROUP					Combined
	Group-I	Group-II	Group-III	Group-IV	Group-V	
	Up to Rs.8,000	Rs.8,001 to Rs.12,000	Rs.12,001 To Rs.18,000	Rs.18,001 to Rs.35,000	Above Rs.35,000	
2009-10	136.82	138.05	140.26	140.03	142.54	139.84
2010-11	159.47	161.20	160.54	166.24	168.82	164.02
2011-12	170.77	174.10	173.67	181.09	185.59	178.67
2011						
Sep.	168.98	171.50	170.93	177.44	180.75	175.02
Oct.	170.27	172.72	172.23	178.81	182.35	176.45
Nov.	171.53	173.93	173.42	179.94	183.30	177.53
Dec.	168.09	170.75	170.48	177.31	181.46	175.04
2012						
Jan.	169.77	172.85	172.56	180.87	185.98	178.25
Feb.	169.56	172.79	172.60	181.14	186.80	178.63
Mar.	172.09	175.25	174.92	183.33	188.73	180.79
Apr.	174.97	178.27	178.05	186.59	192.12	184.03
May	174.72	179.47	178.88	187.24	193.03	184.88
Jun.	177.14	183.99	182.69	190.50	195.71	188.14
Jul.	178.05	184.66	183.65	184.94	185.01	183.98
Aug.	180.34	186.89	185.92	187.33	187.77	186.47
Sep.	182.60	188.81	187.61	188.86	189.40	188.17

Note: SPI figures revised as it is computed on 53 items instead of 51 items.

Source : Pakistan Bureau of Statistics

8.4 Bullion Prices

(Rupees per 10 Grams)

YEAR / MONTH	Karachi	
	GOLD TEZABI	SILVER TEZABI
2007-08	16,695	306
2008-09	22,195	329
2009-10	29,587	215
2010-11	37,658	776
2011-12	48,444	937
2011 Sep.	51,023	1,080
Oct.	47,438	935
Nov.	48,506	927
Dec.	47,839	884
2012 Jan.	48,240	876
Feb.	50,701	943
Mar.	49,754	945
Apr.	48,811	901
May	47,419	833
Jun.	48,937	798
Jul.	48,720	807
Aug.	49,506	828
Sep.	52,537	965

Figures are monthly / yearly averages

Source: Daily Dawn