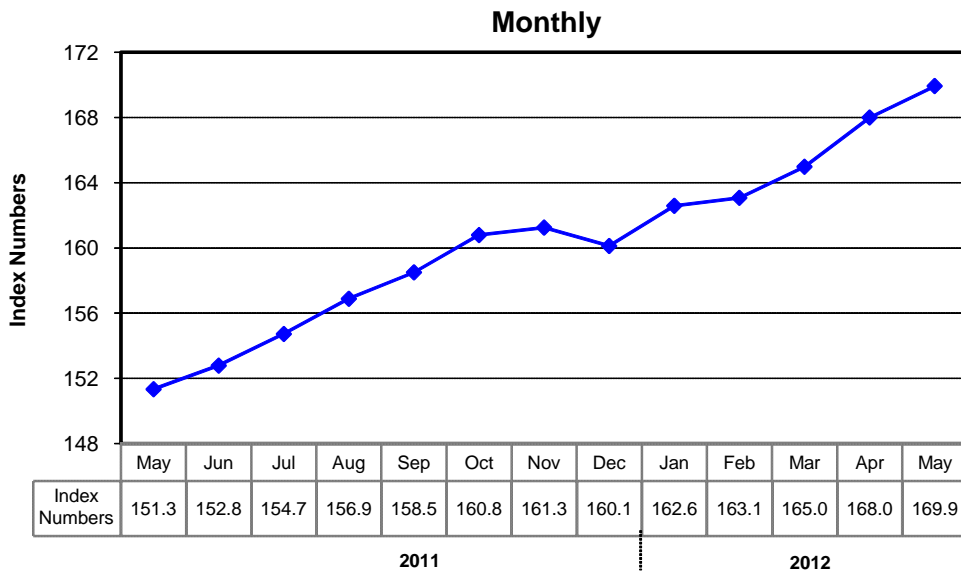
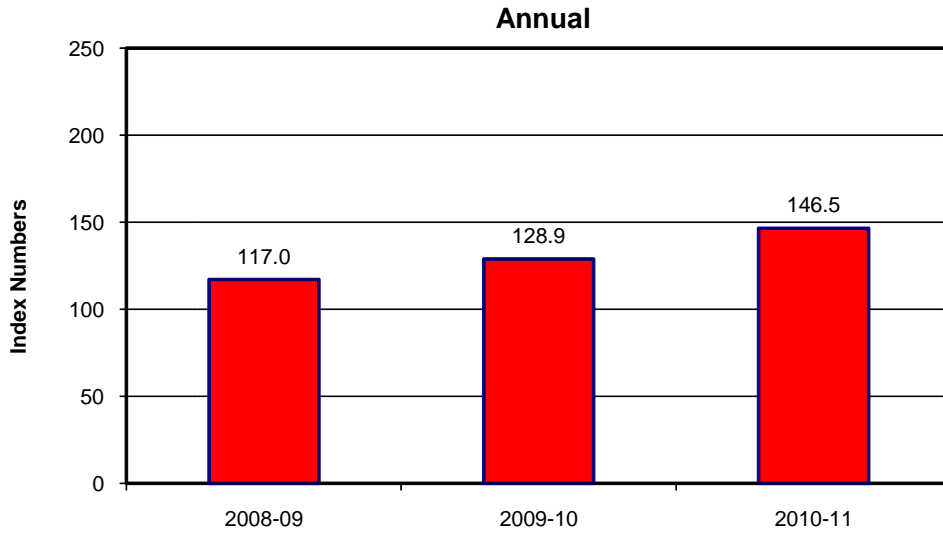


## 8.1 Combined Consumer Price Index Numbers By Commodity Groups - All Urban (2007-08=100)

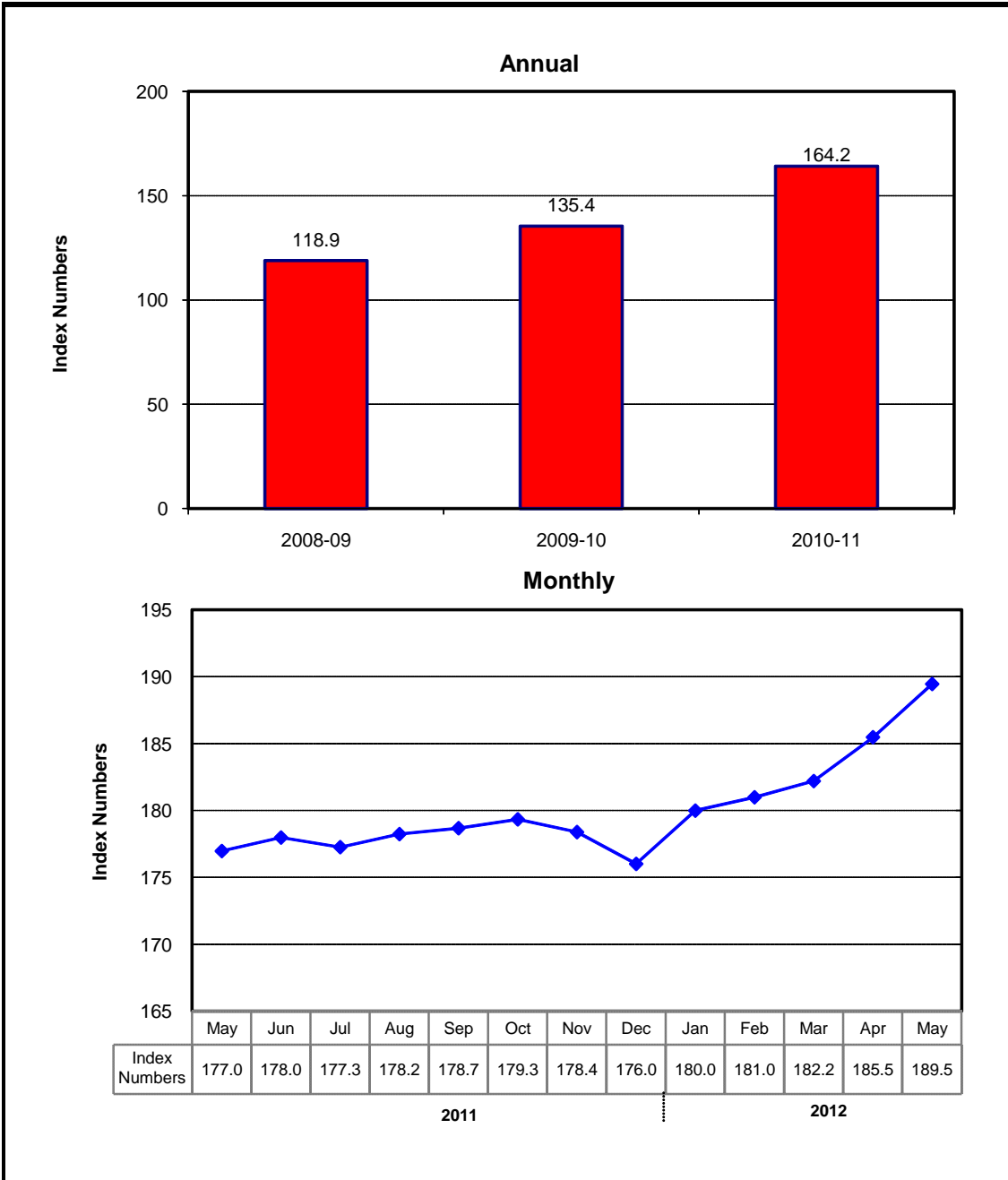
YEAR / MONTH	General	Food And Non- Alcoholic Beverages	Alcoholic Beverages and Tobacco	Clothing and Footwear	Housing Water, Elec, Gas and other Fuels	Furnishing & Household Equip. Mai- ntance etc	Helath	Transport	Commu- nication	Recre- ation and Culture	Educat- ion	Resta- urants And Hotels	Misc.	
		2008-09	<b>117.03</b>	123.48	113.64	111.74	112.01	115.97	108.03	125.15	105.59	114.27	108.15	123.53
2009-10	<b>128.85</b>	139.10	136.71	119.19	122.14	123.89	114.32	132.79	109.65	127.87	119.39	140.36	133.63	
2010-11	<b>146.45</b>	164.61	151.64	133.32	135.27	135.59	123.79	149.01	122.47	134.62	128.17	164.04	152.45	
2011	May.	<b>151.33</b>	169.26	151.57	140.69	138.27	141.13	128.55	158.71	123.74	137.72	134.85	174.47	163.19
	Jun.	<b>152.78</b>	170.14	158.40	142.15	138.47	141.67	129.03	168.11	123.70	138.45	136.56	175.62	165.45
	Jul.	<b>154.72</b>	175.28	160.33	143.03	140.08	144.82	129.63	158.64	123.45	138.85	138.92	177.90	165.50
	Aug.	<b>156.88</b>	177.95	160.77	144.70	141.65	148.31	131.80	161.69	123.34	139.07	139.75	178.46	172.21
	Sep.	<b>158.50</b>	180.91	161.56	146.68	141.80	149.49	133.64	162.97	123.33	139.53	140.24	180.17	177.73
	Oct.	<b>160.79</b>	184.02	161.57	148.92	143.95	154.18	135.22	165.39	123.37	140.30	140.35	180.73	176.45
	Nov.	<b>161.25</b>	184.17	161.67	150.36	144.03	157.52	135.85	165.16	123.19	140.74	140.91	182.32	179.71
	Dec.	<b>160.12</b>	179.79	161.68	151.61	144.16	160.35	137.16	166.18	123.10	141.43	140.80	182.94	180.79
2012	Jan.	<b>162.58</b>	182.60	161.68	153.60	147.43	162.82	138.53	168.41	122.32	141.98	141.09	185.23	182.60
	Feb.	<b>163.07</b>	181.19	161.27	154.19	147.59	165.48	139.60	174.98	122.34	143.03	143.82	188.82	186.70
	Mar.	<b>164.98</b>	183.98	163.53	159.35	147.65	166.88	141.00	178.37	122.42	144.41	145.10	191.63	188.59
	Apr.	<b>168.00</b>	188.00	168.74	161.68	149.07	168.78	141.74	185.94	122.36	146.51	151.36	192.76	188.70
	May	<b>169.93</b>	188.29	169.22	163.22	153.27	171.52	144.07	185.93	122.38	163.95	151.31	193.79	188.15

Source : Pakistan Bureau of Statistics

## Index Numbers of Consumer Prices (2007-08=100)



## Index Numbers of Wholesale Prices (2007- 08=100)



## 8.2 Index Numbers of Wholesale Prices by Commodity Groups (2007-08=100)

YEAR / MONTH		General	Agriculture Forestry & Fishery Products	Ores & Minerals, Electricity Gas & Water	Food Products, Beverages and Tobacco, Textiles, Apparel and Leather Products	Other Transportable Goods except Metal Products, Machinery and Equipments	Metal Product Machinery & Equipment
2008-09		<b>118.93</b>	119.10	125.31	114.57	125.21	109.07
2009-10		<b>135.40</b>	142.02	139.76	135.02	135.41	111.10
2010-11		<b>164.17</b>	183.20	159.13	166.49	155.85	128.10
2011	May	<b>176.97</b>	189.83	162.41	177.44	182.34	143.65
	Jun.	<b>177.98</b>	192.88	161.94	177.71	182.86	144.53
	Jul.	<b>177.26</b>	189.78	162.42	178.83	180.83	145.93
	Aug.	<b>178.24</b>	189.98	170.01	176.26	184.17	146.74
	Sep.	<b>178.68</b>	190.20	170.24	176.66	184.43	148.70
	Oct.	<b>179.34</b>	189.95	170.17	177.12	186.58	150.03
	Nov.	<b>178.39</b>	184.98	170.09	175.63	189.50	151.66
	Dec.	<b>176.01</b>	178.32	170.51	170.36	192.97	153.46
2012	Jan.	<b>179.99</b>	180.98	185.61	172.47	196.36	154.15
	Feb.	<b>180.99</b>	179.07	187.55	173.34	200.50	154.87
	Mar.	<b>182.20</b>	178.44	188.10	174.81	204.15	155.23
	Apr.	<b>185.48</b>	183.68	188.10	177.32	208.92	156.18
	May	<b>189.46</b>	185.78	214.79	179.06	207.39	156.46

Source : Pakistan Bureau of Statistics

### 8.3 Combined Sensitive Price Indicator (SPI) by Income Groups (2007-08 =100)

YEAR / MONTH	INCOME GROUP					Combined	
	Group-I	Group-II	Group-III	Group-IV	Group-V		
	Up to Rs.8000	Rs.8001 to Rs.12000	Rs.12001 To Rs.18000	Rs.18001 to Rs.35000	Above Rs.35000		
2008-09	121.14	121.78	123.32	123.28	125.65	<b>123.26</b>	
2009-10	136.82	138.05	140.26	140.03	142.54	<b>139.84</b>	
2010-11	159.47	161.20	160.54	166.24	168.82	<b>164.02</b>	
2011	May	161.65	164.09	163.84	169.92	173.81	<b>167.97</b>
	Jun.	161.52	163.96	163.87	170.14	174.02	<b>168.09</b>
	Jul.	165.36	168.05	167.88	173.57	176.75	<b>171.45</b>
	Aug.	166.74	169.69	169.41	176.29	180.11	<b>173.86</b>
	Sep.	168.98	171.50	170.93	177.44	180.75	<b>175.02</b>
	Oct.	170.27	172.72	172.23	178.81	182.35	<b>176.45</b>
	Nov.	171.53	173.93	173.42	179.94	183.30	<b>177.53</b>
	Dec.	168.09	170.75	170.48	177.31	181.46	<b>175.04</b>
2012	Jan.	169.77	172.85	172.56	180.87	185.98	<b>178.25</b>
	Feb.	169.56	172.79	172.60	181.14	186.80	<b>178.63</b>
	Mar.	172.09	175.25	174.92	183.33	188.73	<b>180.79</b>
	Apr.	174.97	178.27	178.05	186.59	192.12	<b>184.03</b>
	May	174.72	179.47	178.88	187.24	193.03	<b>184.88</b>

Note: SPI figures revised as it is computed on 53 items instead of 51 items.

Source : Pakistan Bureau of Statistics

## 8.4 Bullion Prices

(Rupees per 10 Grams)

YEAR / MONTH	Karachi		
	GOLD TEZABI	SILVER TEZABI	
2006-07	12,619	228	
2007-08	16,695	306	
2008-09	22,195	329	
2009-10	29,587	215	
2010-11	37,658	776	
2011	May	41,738	1,100
	Jun.	42,326	1,034
	Jul.	43,299	1,026
	Aug.	49,366	1,097
	Sep.	51,023	1,080
	Oct.	47,438	935
	Nov.	48,506	927
	Dec.	47,839	884
2012	Jan.	48,240	876
	Feb.	50,701	943
	Mar.	49,754	945
	Apr.	48,811	901
	May	47,419	833

Figures are monthly / yearly averages

Source: Daily Dawn