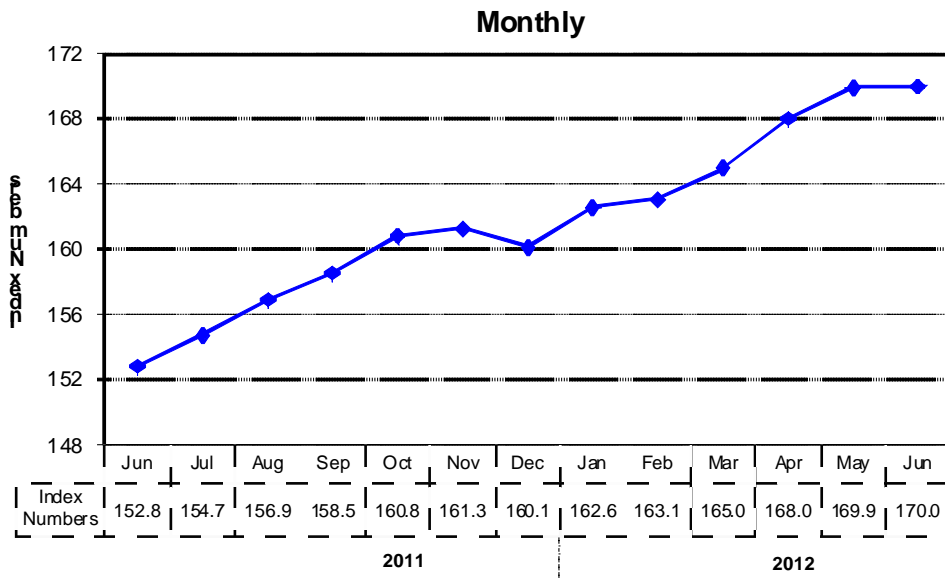
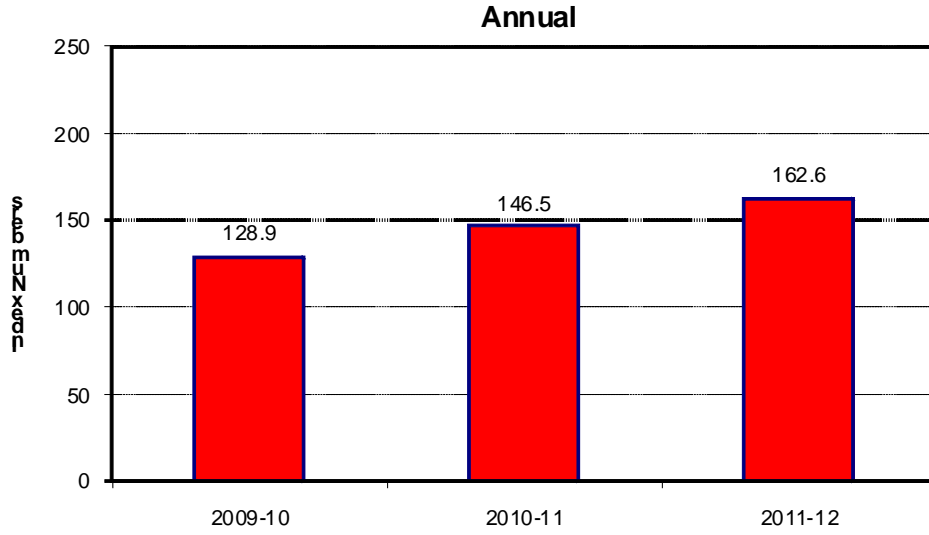


8.1 Combined Consumer Price Index Numbers
By Commodity Groups - All Urban
(2007-08=100)

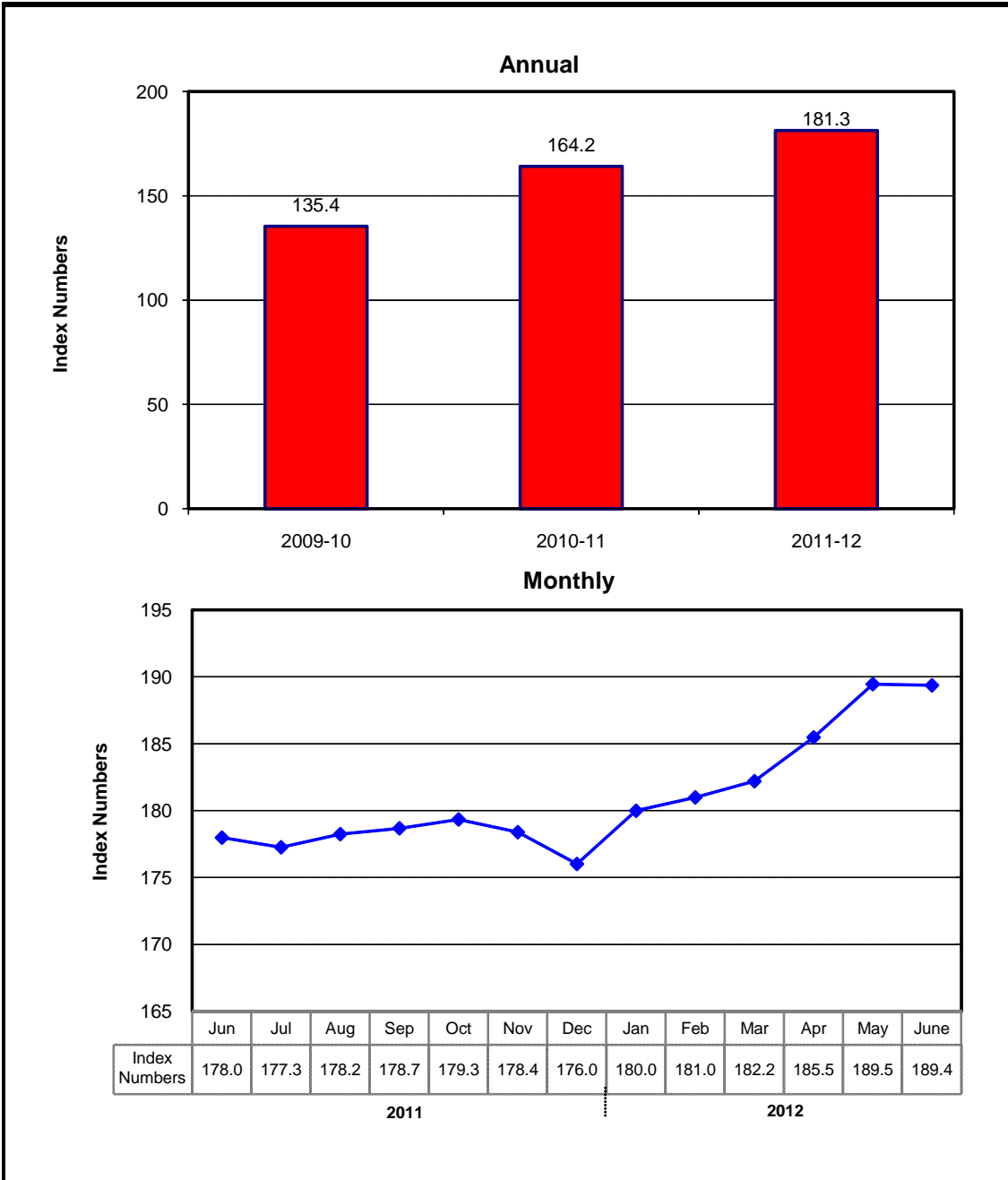
YEAR / MONTH	General	Food	Alcoholic		Housing	Furnishing				Recre-		Resta-	
		And Non- Alcoholic Beverages	Beverages and Tobacco	Clothing and Footwear	Water, Elec, Gas and other Fuels	& Household Equip. Mai- ntance etc	Helath	Transport	Commu- nication	ation and Culture	ion	urants And Hotels	Misc.
2009-10	128.85	139.10	136.71	119.19	122.14	123.89	114.32	132.79	109.65	127.87	119.39	140.36	133.63
2010-11	146.45	164.61	151.64	133.32	135.27	135.59	123.79	149.01	122.47	134.62	128.17	164.04	152.45
2011-12	162.57	182.77	165.01	153.45	146.17	160.28	137.97	171.39	122.93	145.35	143.83	185.82	181.47
2011													
Jun.	152.78	170.14	158.40	142.15	138.47	141.67	129.03	168.11	123.70	138.45	136.56	175.62	165.45
Jul.	154.72	175.28	160.33	143.03	140.08	144.82	129.63	158.64	123.45	138.85	138.92	177.90	165.50
Aug.	156.88	177.95	160.77	144.70	141.65	148.31	131.80	161.69	123.34	139.07	139.75	178.46	172.21
Sep.	158.50	180.91	161.56	146.68	141.80	149.49	133.64	162.97	123.33	139.53	140.24	180.17	177.73
Oct.	160.79	184.02	161.57	148.92	143.95	154.18	135.22	165.39	123.37	140.30	140.35	180.73	176.45
Nov.	161.25	184.17	161.67	150.36	144.03	157.52	135.85	165.16	123.19	140.74	140.91	182.32	179.71
Dec.	160.12	179.79	161.68	151.61	144.16	160.35	137.16	166.18	123.10	141.43	140.80	182.94	180.79
2012													
Jan.	162.58	182.60	161.68	153.60	147.43	162.82	138.53	168.41	122.32	141.98	141.09	185.23	182.60
Feb.	163.07	181.19	161.27	154.19	147.59	165.48	139.60	174.98	122.34	143.03	143.82	188.82	186.70
Mar.	164.98	183.98	163.53	159.35	147.65	166.88	141.00	178.37	122.42	144.41	145.10	191.63	188.59
Apr.	168.00	188.00	168.74	161.68	149.07	168.78	141.74	185.94	122.36	146.51	151.36	192.76	188.70
May	169.93	188.29	169.22	163.22	153.27	171.52	144.07	185.93	122.38	163.95	151.31	193.79	188.15
Jun.	169.99	187.05	188.05	164.08	153.35	173.20	147.42	182.98	123.62	164.37	152.28	195.10	190.51

Source : Pakistan Bureau of Statistics

Index Numbers of Consumer Prices (2007- 08=100)



Index Numbers of Wholesale Prices (2007- 08=100)



8.2 Index Numbers of Wholesale Prices by Commodity Groups (2007-08=100)

YEAR / MONTH		General	Agriculture Forestry & Fishery Products	Ores & Minerals, Electricity Gas & Water	Food Products, Beverages and Tobacco, Textiles, Apparel and Leather Products	Other Transportable Goods except Metal Products, Machinery and Equipments	Metal Product Machinery & Equipment
2009-10		135.40	142.02	139.76	135.02	135.41	111.10
2010-11		164.17	183.20	159.13	166.49	155.85	128.10
2011-12		181.29	185.03	182.74	176.07	194.64	152.55
2011	Jun.	177.98	192.88	161.94	177.71	182.86	144.53
	Jul.	177.26	189.78	162.42	178.83	180.83	145.93
	Aug.	178.24	189.98	170.01	176.26	184.17	146.74
	Sep.	178.68	190.20	170.24	176.66	184.43	148.70
	Oct.	179.34	189.95	170.17	177.12	186.58	150.03
	Nov.	178.39	184.98	170.09	175.63	189.50	151.66
	Dec.	176.01	178.32	170.51	170.36	192.97	153.46
2012	Jan.	179.99	180.98	185.61	172.47	196.36	154.15
	Feb.	180.99	179.07	187.55	173.34	200.50	154.87
	Mar.	182.20	178.44	188.10	174.81	204.15	155.23
	Apr.	185.48	183.68	188.10	177.32	208.92	156.18
	May	189.46	185.78	214.79	179.06	207.39	156.46
	Jun.	189.37	189.25	215.23	180.94	199.83	157.22

Source : Pakistan Bureau of Statistics

8.3 Combined Sensitive Price Indicator (SPI) by Income Groups (2007-08 =100)

YEAR / MONTH	INCOME GROUP					Combined	
	Group-I	Group-II	Group-III	Group-IV	Group-V		
	Up to Rs.8000	Rs.8001 to Rs.12000	Rs.12001 To Rs.18000	Rs.18001 to Rs.35000	Above Rs.35000		
2009-10	136.82	138.05	140.26	140.03	142.54	139.84	
2010-11	159.47	161.20	160.54	166.24	168.82	164.02	
2011-12	170.77	174.10	173.67	181.09	185.59	178.67	
2011	Jun.	161.52	163.96	163.87	170.14	174.02	168.09
	Jul.	165.36	168.05	167.88	173.57	176.75	171.45
	Aug.	166.74	169.69	169.41	176.29	180.11	173.86
	Sep.	168.98	171.50	170.93	177.44	180.75	175.02
	Oct.	170.27	172.72	172.23	178.81	182.35	176.45
	Nov.	171.53	173.93	173.42	179.94	183.30	177.53
2012	Dec.	168.09	170.75	170.48	177.31	181.46	175.04
	Jan.	169.77	172.85	172.56	180.87	185.98	178.25
	Feb.	169.56	172.79	172.60	181.14	186.80	178.63
	Mar.	172.09	175.25	174.92	183.33	188.73	180.79
	Apr.	174.97	178.27	178.05	186.59	192.12	184.03
	May	174.72	179.47	178.88	187.24	193.03	184.88
Jun.	177.14	183.99	182.69	190.50	195.71	188.14	

Note: SPI figures revised as it is computed on 53 items instead of 51 items.

Source : Pakistan Bureau of Statistics

8.4 Bullion Prices

(Rupees per 10 Grams)

YEAR / MONTH	Karachi	
	GOLD TEZABI	SILVER TEZABI
2007-08	16,695	306
2008-09	22,195	329
2009-10	29,587	215
2010-11	37,658	776
2011-12	48,444	937
2011 Jun.	42,326	1,034
Jul.	43,299	1,026
Aug.	49,366	1,097
Sep.	51,023	1,080
Oct.	47,438	935
Nov.	48,506	927
Dec.	47,839	884
2012 Jan.	48,240	876
Feb.	50,701	943
Mar.	49,754	945
Apr.	48,811	901
May	47,419	833
Jun.	48,937	798

Figures are monthly / yearly averages

Source: Daily Dawn