

8.1 Combined Consumer Price Index Numbers

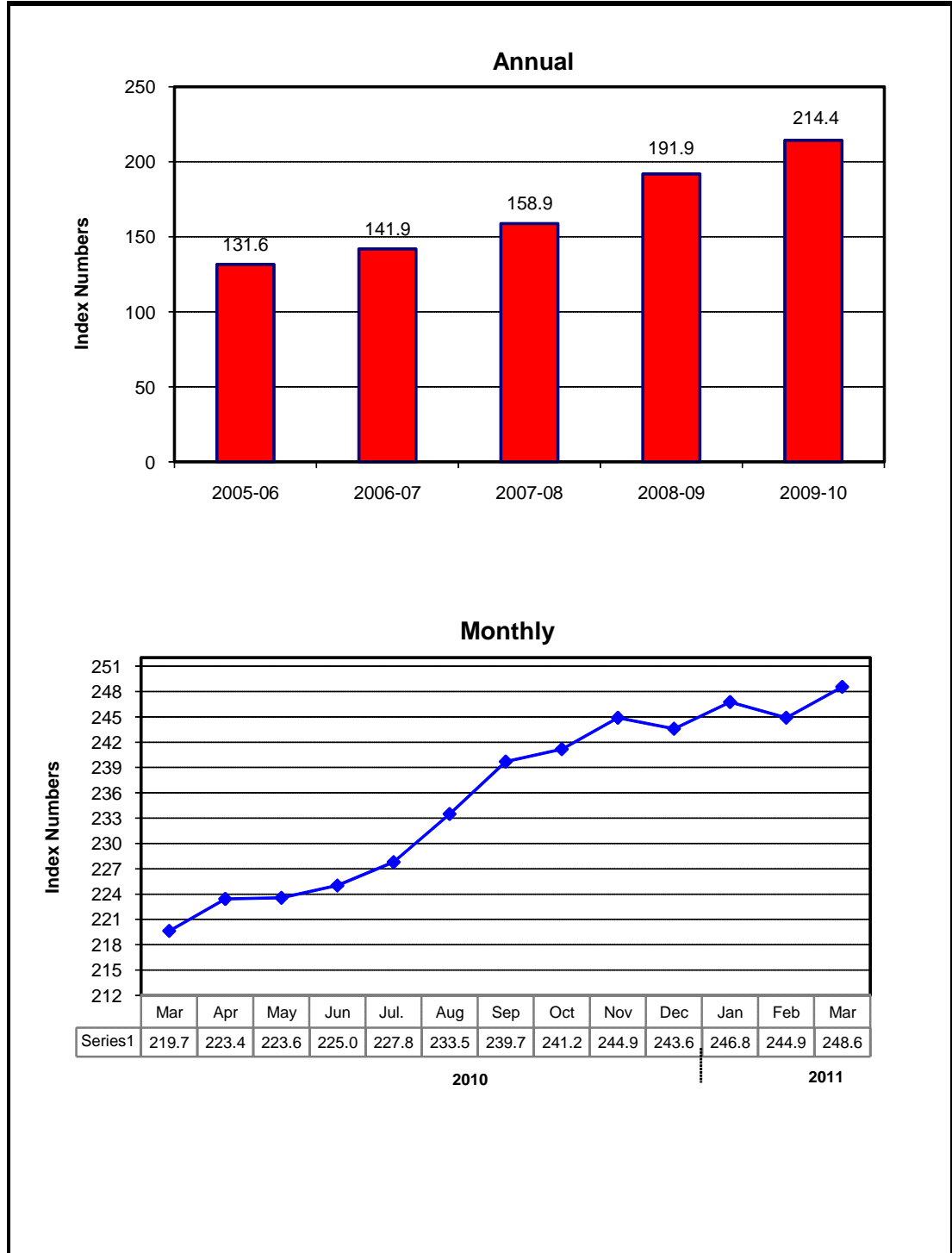
By Commodity Groups - All Urban

(2000-01=100)

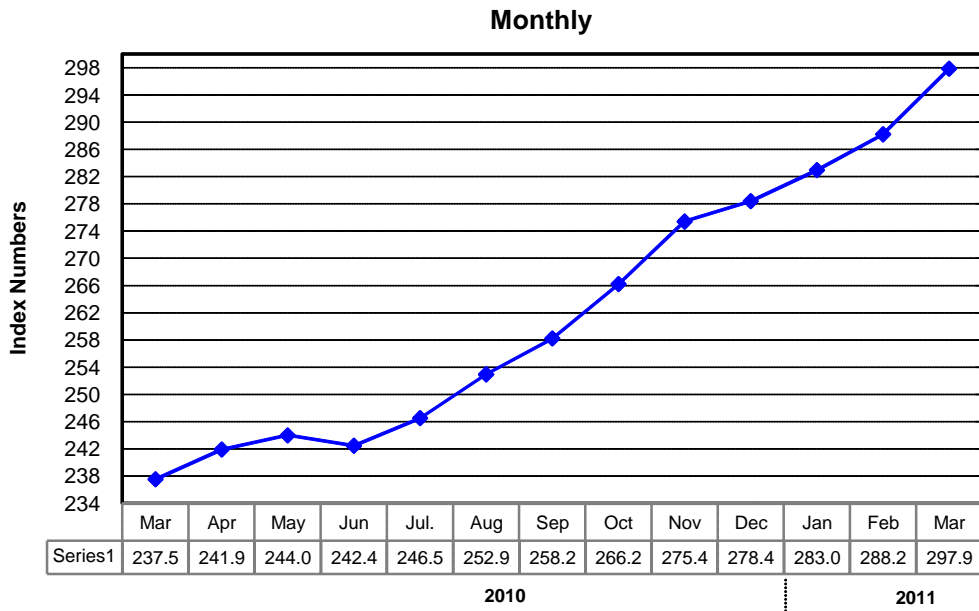
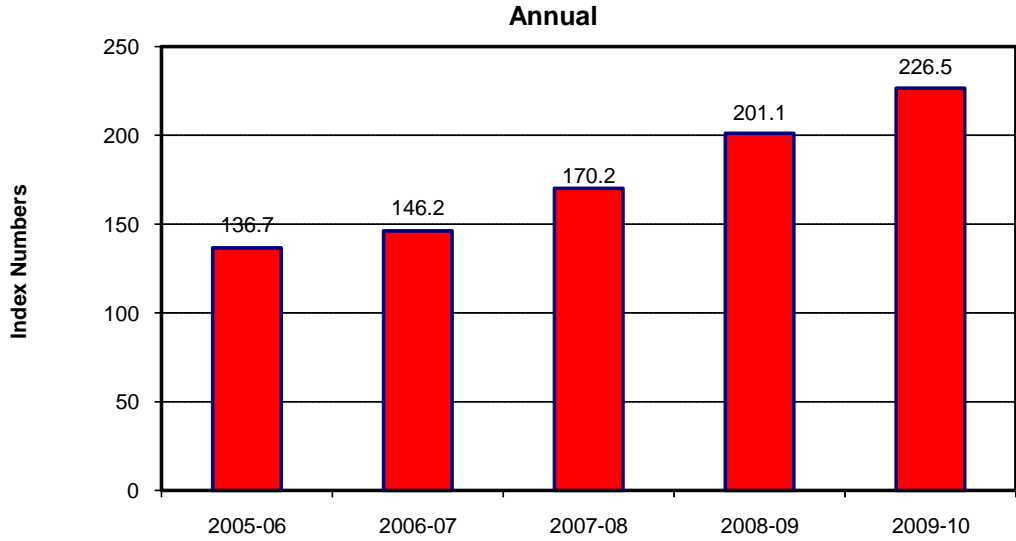
Year / Month	General	Food and Beverages	Apparel Textile and Footwear	House Rent	Fuel and Lighting	Household Furniture and Equipment	Transport and Communi-cation	Recreation & Entertai- nment	Education	Cleaning, Laundry and Personal Appearance	Medicare
2005-06	131.64	134.39	117.58	132.36	137.09	123.41	145.90	105.65	125.03	119.49	110.66
2006-07	141.87	148.21	123.70	141.21	149.43	131.64	148.96	105.76	133.82	124.53	120.91
2007-08	158.90	174.36	133.79	154.47	158.48	141.08	155.55	107.86	140.88	138.28	132.23
2008-09	191.90	215.69	152.82	180.90	198.92	159.58	192.55	120.00	165.27	163.17	147.25
2009-10	214.41	242.59	162.47	205.88	226.90	169.76	204.15	127.09	185.74	180.52	157.02
2010 Mar.	219.65	247.55	163.88	210.08	243.82	171.82	212.24	126.54	186.28	184.18	159.10
Apr.	223.44	252.53	167.51	211.25	242.79	173.31	224.60	139.17	191.30	185.00	163.25
May	223.58	252.62	169.75	212.37	240.78	174.72	219.79	139.17	193.18	186.02	164.47
Jun.	225.03	254.42	170.99	213.21	242.34	175.90	221.20	139.16	193.42	188.47	166.58
Jul.	227.79	258.19	173.11	213.98	251.82	177.79	221.99	139.12	193.61	190.23	167.20
Aug.	233.50	271.35	173.92	215.05	252.08	179.47	222.20	139.25	193.66	190.23	167.69
Sep.	239.69	285.63	175.04	215.77	252.69	180.62	222.01	139.25	193.70	191.61	169.67
Oct.	241.17	285.89	176.54	216.73	256.98	182.40	227.96	139.28	194.24	195.47	170.04
Nov.	244.84	292.20	178.08	217.91	259.06	184.47	228.79	139.45	194.75	200.02	178.98
Dec.	243.60	286.64	179.84	219.32	263.60	185.96	229.20	139.56	194.79	201.77	181.45
2011 Jan.	246.76	292.52	181.46	220.82	265.58	187.75	229.49	139.61	195.46	202.36	183.71
Feb.	244.93	286.26	183.07	222.39	266.04	189.50	230.63	139.71	195.73	202.78	184.68
Mar.	248.55	292.03	185.96	224.01	265.98	191.75	234.58	139.80	195.83	209.13	185.11

Source : Federal Bureau of Statistics

Index Numbers of Consumer Prices (2000 - 01=100)



Index Numbers of Wholesale Prices (2000- 01=100)



8.2 Index Numbers of Wholesale Prices by Commodity Groups (2000-01=100)

Year / Month		General	Food	Raw Materials	Fuel, Lighting and Lubricants	Manufactures	Building Materials	
2005-06		136.68	133.78	121.93	174.57	115.39	144.18	
2006-07		146.18	145.67	138.85	184.10	119.91	151.93	
2007-08		170.15	173.27	156.57	223.34	128.33	177.18	
2008-09		201.10	213.54	184.45	258.96	140.67	213.00	
2009-10		226.49	239.01	238.11	296.48	154.94	201.40	
2010	Mar.	237.51	246.68	274.70	312.23	161.77	202.43	
	Apr.	241.88	248.53	285.83	318.67	164.72	217.18	
	May	243.98	248.81	295.35	316.79	170.15	221.07	
	Jun.	242.44	251.73	296.34	304.00	168.82	220.29	
	Jul.	246.48	256.40	299.80	309.51	172.38	216.33	
	Aug.	252.93	267.12	302.27	317.83	173.16	214.88	
	Sep.	258.22	279.03	309.74	313.03	175.40	215.35	
	Oct.	266.19	283.96	327.07	325.57	182.66	219.69	
	Nov.	275.46	290.52	356.30	332.06	193.44	222.70	
	Dec.	278.38	286.07	386.42	335.15	200.05	224.13	
	2011	Jan.	282.96	291.06	402.36	338.54	201.97	225.32
		Feb.	288.24	289.24	434.70	349.84	206.86	225.57
Mar.		297.86	294.48	458.34	366.57	215.17	228.81	

Source : Federal Bureau of Statistics

8.3 Combined Sensitive Price Indicator (SPI) by Income Groups (2000-01 =100)

Year / Month		INCOME GROUP				Combined	
		Group-I	Group-II	Group-III	Group-IV		
		Up to Rs.3000	Rs.3001 to Rs.5000	Rs.5001 to Rs.12000	Above Rs.12000		
2005-06		136.56	136.15	135.99	139.80	136.43	
2006-07		151.34	150.44	149.97	152.32	149.29	
2007-08		176.77	175.15	172.60	170.45	170.55	
2008-09		218.16	216.02	213.77	208.87	209.29	
2009-10		247.22	245.28	242.77	235.70	236.87	
2010	Mar.	255.84	254.02	251.47	244.42	244.98	
	Apr.	256.94	255.08	253.00	247.23	247.50	
	May	256.78	254.90	253.61	250.68	249.51	
	Jun.	259.23	257.10	255.66	250.99	250.61	
	Jul.	264.02	262.34	260.53	254.77	255.13	
	Aug.	271.58	269.75	267.49	260.62	261.70	
	Sep.	283.30	280.91	277.62	267.95	270.75	
	Oct.	289.49	286.80	282.84	271.45	275.31	
	Nov.	300.46	296.90	291.97	279.89	284.33	
	Dec.	298.53	294.87	290.30	279.19	282.83	
	2011	Jan.	299.92	296.26	291.71	281.37	284.47
		Feb.	296.54	292.83	288.54	278.71	281.56
Mar.		298.89	295.07	290.89	282.64	284.83	

Note: SPI figures revised as it is computed on 53 items instead of 51 items.

Source : Federal Bureau of Statistics

8.4 Bullion Prices

			(Rupees per 10 Grams)	
Year / Month		Karachi		
		GOLD TEZABI	SILVER TEZABI	
2005-06		10,317	180	
2006-07		12,619	228	
2007-08		16,695	306	
2008-09		22,195	329	
2009-10		29,587	215	
2010 Mar.		30,555	458	
Apr.		30,910	468	
May		32,346	475	
Jun.		33,544	482	
Jul.		33,150	478	
Aug.		33,087	482	
Sep.		34,692	519	
Oct.		36,968	579	
Nov.		37,671	677	
Dec.		37,026	776	
2011 Jan.		38,168	806	
Feb.		37,885	805	
Mar.		39,017	892	

Figures are monthly / yearly averages

Source: Daily Business Recorder