

## 8.1 Combined Consumer Price Index Numbers

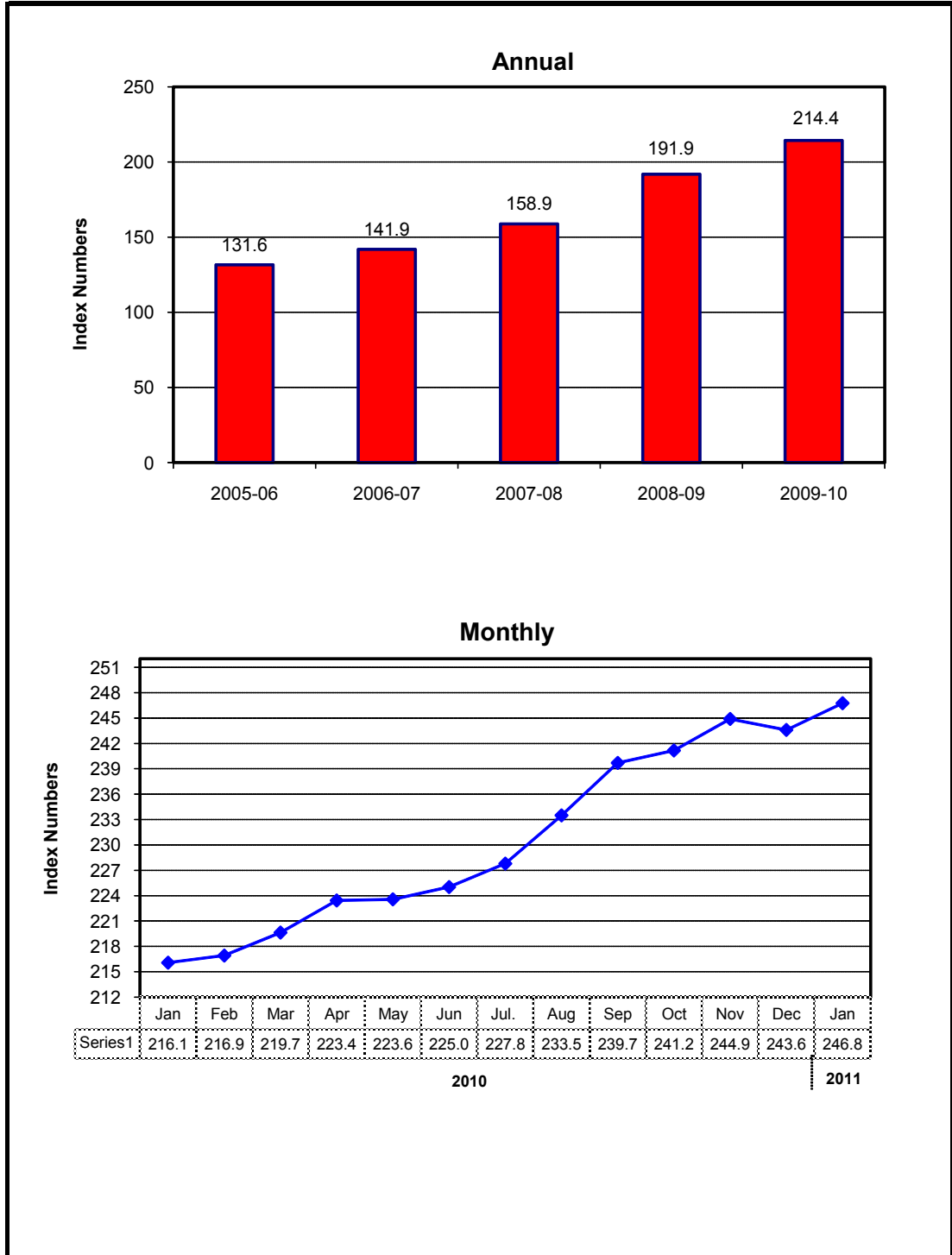
### By Commodity Groups - All Urban

(2000-01=100)

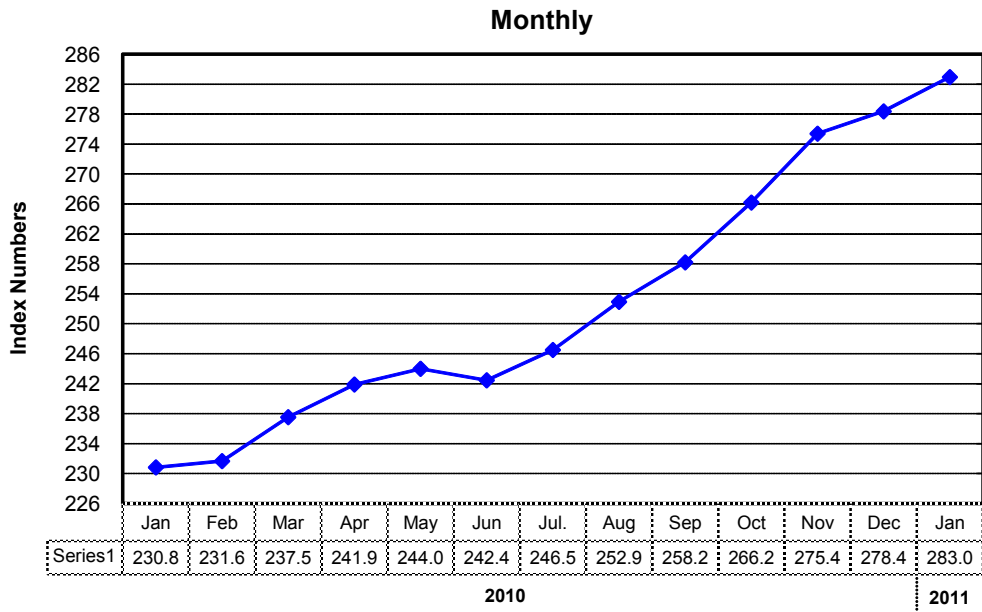
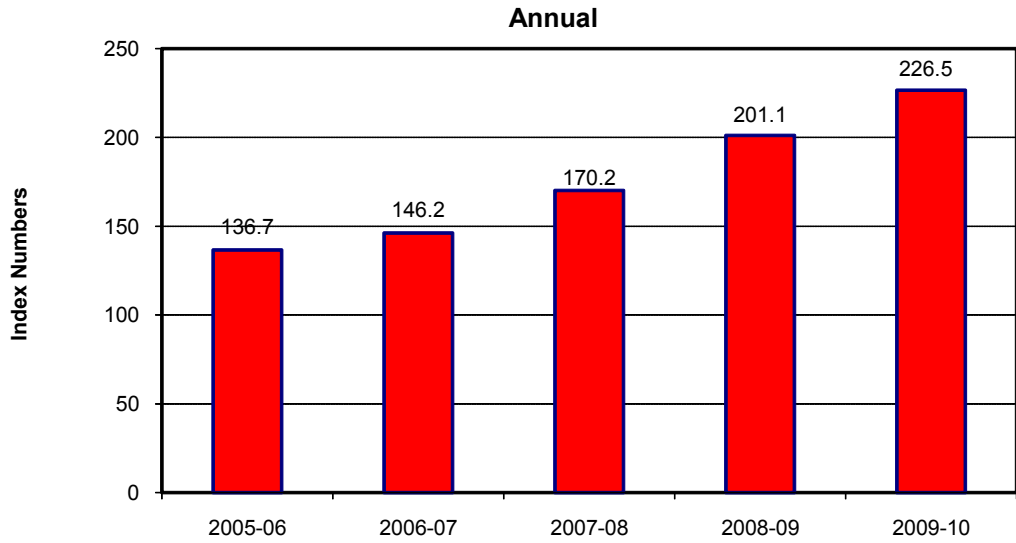
YEAR / MONTH	General	Food and Beverages	Apparel Textile and Footwear	House Rent	Fuel and Lighting	Household Furniture and Equipment	Transport and Communi-cation	Recreation & Entertai-nment	Education	Cleaning, Laundry and Personal Appearance	Medicare
2005-06	<b>131.64</b>	134.39	117.58	132.36	137.09	123.41	145.90	105.65	125.03	119.49	110.66
2006-07	<b>141.87</b>	148.21	123.70	141.21	149.43	131.64	148.96	105.76	133.82	124.53	120.91
2007-08	<b>158.90</b>	174.36	133.79	154.47	158.48	141.08	155.55	107.86	140.88	138.28	132.23
2008-09	<b>191.90</b>	215.69	152.82	180.90	198.92	159.58	192.55	120.00	165.27	163.17	147.25
2009-10	<b>214.41</b>	242.59	162.47	205.88	226.90	169.76	204.15	127.09	185.74	180.52	157.02
2010 Jan.	<b>216.09</b>	242.91	161.48	207.22	244.09	170.02	203.09	122.70	185.65	182.79	158.16
Feb.	<b>216.93</b>	243.17	162.53	208.78	243.96	171.14	205.36	126.43	185.97	183.71	158.79
Mar.	<b>219.65</b>	247.55	163.88	210.08	243.82	171.82	212.24	126.54	186.28	184.18	159.10
Apr.	<b>223.44</b>	252.53	167.51	211.25	242.79	173.31	224.60	139.17	191.30	185.00	163.25
May	<b>223.58</b>	252.62	169.75	212.37	240.78	174.72	219.79	139.17	193.18	186.02	164.47
Jun.	<b>225.03</b>	254.42	170.99	213.21	242.34	175.90	221.20	139.16	193.42	188.47	166.58
Jul.	<b>227.79</b>	258.19	173.11	213.98	251.82	177.79	221.99	139.12	193.61	190.23	167.20
Aug.	<b>233.50</b>	271.35	173.92	215.05	252.08	179.47	222.20	139.25	193.66	190.23	167.69
Sep.	<b>239.69</b>	285.63	175.04	215.77	252.69	180.62	222.01	139.25	193.70	191.61	169.67
Oct.	<b>241.17</b>	285.89	176.54	216.73	256.98	182.40	227.96	139.28	194.24	195.47	170.04
Nov.	<b>244.84</b>	292.20	178.08	217.91	259.06	184.47	228.79	139.45	194.75	200.02	178.98
Dec.	<b>243.60</b>	286.64	179.84	219.32	263.60	185.96	229.20	139.56	194.79	201.77	181.45
2011 Jan.	<b>246.76</b>	292.52	181.46	220.82	265.58	187.75	229.49	139.61	195.46	202.36	183.71

Source : Federal Bureau of Statistics

## Index Numbers of Consumer Prices (2000 - 01=100)



## Index Numbers of Wholesale Prices (2000- 01=100)



## 8.2 Index Numbers of Wholesale Prices by Commodity Groups (2000-01=100 )

YEAR / MONTH		General	Food	Raw Materials	Fuel, Lighting and Lubricants	Manufactures	Building Materials
2005-06		<b>136.68</b>	133.78	121.93	174.57	115.39	144.18
2006-07		<b>146.18</b>	145.67	138.85	184.10	119.91	151.93
2007-08		<b>170.15</b>	173.27	156.57	223.34	128.33	177.18
2008-09		<b>201.10</b>	213.54	184.45	258.96	140.67	213.00
2009-10		<b>226.49</b>	239.01	238.11	296.48	154.94	201.40
2010	Jan.	<b>230.80</b>	241.37	235.19	313.87	156.61	196.26
	Feb.	<b>231.64</b>	242.67	250.35	304.47	159.31	200.37
	Mar.	<b>237.51</b>	246.68	274.70	312.23	161.77	202.43
	Apr.	<b>241.88</b>	248.53	285.83	318.67	164.72	217.18
	May	<b>243.98</b>	248.81	295.35	316.79	170.15	221.07
	Jun.	<b>242.44</b>	251.73	296.34	304.00	168.82	220.29
	Jul.	<b>246.48</b>	256.40	299.80	309.51	172.38	216.33
	Aug.	<b>252.93</b>	267.12	302.27	317.83	173.16	214.88
	Sep.	<b>258.22</b>	279.03	309.74	313.03	175.40	215.35
	Oct.	<b>266.19</b>	283.96	327.07	325.57	182.66	219.69
	Nov.	<b>275.46</b>	290.52	356.30	332.06	193.44	222.70
	Dec.	<b>278.38</b>	286.07	386.42	335.15	200.05	224.13
2011	Jan.	<b>282.96</b>	291.06	402.36	338.54	201.97	225.32

Source : Federal Bureau of Statistics

### 8.3 Combined Sensitive Price Indicator (SPI) by Income Groups (2000-01 =100)

YEAR / MONTH	INCOME GROUP					
	Group-I	Group-II	Group-III	Group-IV	Combined	
	Up to Rs.3000	Rs.3001 to Rs.5000	Rs.5001 to Rs.12000	Above Rs.12000		
2005-06	136.56	136.15	135.99	139.80	<b>136.43</b>	
2006-07	151.34	150.44	149.97	152.32	<b>149.29</b>	
2007-08	176.77	175.15	172.60	170.45	<b>170.55</b>	
2008-09	218.16	216.02	213.77	208.87	<b>209.29</b>	
2009-10	247.22	245.28	242.77	235.70	<b>236.87</b>	
2010	Jan.	252.46	250.81	247.78	239.00	<b>240.25</b>
	Feb.	253.87	251.97	249.06	241.94	<b>242.37</b>
	Mar.	255.84	254.02	251.47	244.42	<b>244.98</b>
	Apr.	256.94	255.08	253.00	247.23	<b>247.50</b>
	May	256.78	254.90	253.61	250.68	<b>249.51</b>
	Jun.	259.23	257.10	255.66	250.99	<b>250.61</b>
	Jul.	264.02	262.34	260.53	254.77	<b>255.13</b>
	Aug.	271.58	269.75	267.49	260.62	<b>261.70</b>
	Sep.	283.30	280.91	277.62	267.95	<b>270.75</b>
	Oct.	289.49	286.80	282.84	271.45	<b>275.31</b>
	Nov.	300.46	296.90	291.97	279.89	<b>284.33</b>
	Dec.	298.53	294.87	290.30	279.19	<b>282.83</b>
2011	Jan.	299.92	296.26	291.71	281.37	<b>284.47</b>

Note: SPI figures revised as it is computed on 53 items instead of 51 items.

Source : Federal Bureau of Statistics

## 8.4 Bullion Prices

(Rupees per 10 Grams)

YEAR / MONTH	Karachi	
	GOLD TEZABI	SILVER TEZABI
2005-06	10,317	180
2006-07	12,619	228
2007-08	16,695	306
2008-09	22,195	329
2009-10	29,587	215
2010		
Jan.	31,289	487
Feb.	30,704	461
Mar.	30,555	458
Apr.	30,910	468
May	32,346	475
Jun.	33,544	482
Jul.	33,150	478
Aug.	33,087	482
Sep.	34,692	519
Oct.	36,968	579
Nov.	37,671	677
Dec.	37,026	776
2011		
Jan.	38,168	806

Figures are monthly / yearly averages

Source: Daily Business Recorder