

6.1 Government of Pakistan's Treasury Bills

(Million Rupees)

PERIODS		3 months Government of Pakistan Treasury Bills					6 months Government of Pakistan Treasury Bills		
		Issue	Discount Allowed	Discount Discharged	Discount Paid	Outstanding Balance	Issue	Discount Allowed	Discount Discharged
2005	Dec.	2,734.1	50.9	8,280.6	154.4	14,615.3	1,728.9	71.1	59,097.9
2006	Jun.	1,800.8	34.2	12,109.3	225.7	2,095.3	623.8	26.2	1,728.9
	Dec.	793.6	15.8	27,846.2	553.8	20,995.0	5,124.8	225.2	623.8
2007	Jun.	-	-	5,147.5	102.5	3,001.7	299.7	13.3	5,124.8
	Dec.	7,912.0	164.8	-	-	8,026.0	17,332.5	793.6	300.0
2008	Jun.	65,661.5	1,668.2	489.3	10.8	90,645.9	3,441.3	192.4	17,332.5
	Dec.	146,373.8	4,662.8	49,133.6	1,420.6	412,083.6	6,169.5	431.0	3,441.3
2009	Jun.	47.0	1.4	44.7	1.2	8,541.2	9,219.0	576.1	6,169.5
	Dec.	11,357.5	316.2	24,480.1	693.3	26,945.7	31,129.1	1,892.0	9,218.9
2010	Jun.	39,823.1	1,102.9	33,475.4	939.0	103,640.7	71,450.3	4,352.2	26,294.3
	Dec.	225,029.5	6,756.5	172,887.5	5,050.4	430,647.2	122,055.1	8,017.1	71,450.3
2010	Apr.	27,355.9	765.6	4,616.6	126.4	86,639.0	38,503.8	2,352.7	9,514.6
	May	36,461.8	1,000.3	25,807.7	721.7	97,293.0	51,784.4	3,124.4	5,885.1
	Jun.	39,823.1	1,102.9	33,475.4	939.0	103,640.7	71,450.3	4,352.2	26,294.3
	Jul.	92,539.0	2,574.8	46,022.9	1,279.4	150,156.7	109,555.6	6,733.6	44,339.0
	Aug.	179,162.8	5,142.9	33,254.4	913.2	296,065.1	17,352.8	1,094.4	51,111.5
	Sep.	108,336.4	3,144.6	24,363.3	676.1	380,038.2	31,056.3	1,972.0	35,998.7
	Oct.	129,324.1	3,810.3	92,538.9	2,574.8	416,823.3	83,002.7	5,412.2	38,506.8
	Nov.	140,844.7	4,172.0	179,162.8	5,089.2	378,505.2	70,614.8	4,624.6	51,784.4
	Dec.	225,029.5	6,756.5	172,887.5	5,050.4	430,647.2	122,055.1	8,017.1	71,450.3
	2011	Jan.	330,506.2	10,251.6	158,385.6	4,650.7	602,767.8	25,126.5	1,698.8
Feb.		173,547.3	5,384.9	119,112.4	3,593.3	657,202.8	118,498.5	8,073.1	39,947.8
Mar.		61,859.5	1,901.5	153,149.1	4,589.0	565,913.1	204,429.6	13,890.5	31,056.3
Apr.		42,795.6	1,305.2	330,506.2	10,251.6	278,202.5	307,464.5	20,897.3	83,002.7

Note : Six months Government of Pakistan Treasury Bills restarted w. e. f. June 1998 and 3 & 12 months Government of Pakistan Treasury Bills restarted w.e.f July 1998.

6.1 Government of Pakistan's Treasury Bills

(Million Rupees)

PERIODS		6 months Government of Pakistan Treasury Bills		12 months Government of Pakistan Treasury Bills				
		Discount Paid	Outstanding Balance	Issue	Discount Allowed	Discharged	Discount Paid	Outstanding Balance
2005	Dec.	2,335.8	59,159.9	82,036.8	7,174.7	-	-	329,870.2
2006	Jun.	71.1	7,934.1	28,686.2	2,513.8	48,360.1	4,039.9	422,647.0
	Dec.	26.2	43,288.7	47,687.7	4,282.3	82,150.5	7,184.7	344,177.0
2007	Jun.	225.2	45,252.8	49,979.6	4,550.4	28,686.2	2,513.8	607,844.1
	Dec.	13.3	31,126.8	26,706.0	2,504.0	47,687.7	4,282.3	686,517.2
2008	Jun.	793.6	43,546.7	9,559.4	1,094.0	49,979.6	4,550.4	402,783.9
	Dec.	192.4	9,916.8	-	-	26,706.0	2,503.9	136,100.5
2009	Jun.	431.0	188,606.3	101,872.0	12,847.3	9,559.4	1,094.4	598,990.5
	Dec.	576.1	95,239.7	14,565.8	1,761.3	2,762.3	391.5	913,851.4
2010	Jun.	1,598.7	293,187.8	104,695.5	12,894.7	101,872.0	12,847.3	830,606.3
	Dec.	4,352.2	433,637.2	18,978.8	2,587.9	14,565.8	1,761.3	585,062.5
2010	Apr.	596.9	202,132.4	89,641.4	11,012.2	111,192.5	14,484.5	848,096.9
	May	362.4	248,031.7	69,769.3	8,485.3	90,083.3	11,894.0	827,782.8
	Jun.	1,598.7	293,187.8	104,695.5	12,894.7	101,872.0	12,847.3	830,606.3
	Jul.	2,655.6	358,404.3	32,758.9	4,064.5	81,150.2	9,407.2	782,215.0
	Aug.	3,093.6	324,645.5	13,560.5	1,728.9	107,489.7	13,108.1	688,285.7
	Sep.	2,210.6	319,703.1	2,536.1	323.4	67,928.5	8,416.1	622,893.3
	Oct.	2,352.7	364,202.0	5,751.8	758.2	15,838.2	1,988.8	612,807.0
	Nov.	3,102.0	383,032.5	4,433.4	587.6	36,590.9	4,498.8	580,649.4
	Dec.	4,352.2	433,637.2	18,978.8	2,587.9	14,565.8	1,761.3	585,062.5
	2011	Jan.	6,733.8	349,208.1	7,467.2	1,032.8	45,453.8	5,440.2
Feb.		2,499.4	427,758.9	36,829.4	5,083.3	93,559.0	11,359.4	490,346.3
Mar.		1,972.0	601,132.9	84,092.5	11,569.0	103,924.1	12,808.7	470,514.7
Apr.		5,412.2	825,593.9	99,243.0	13,690.1	89,641.4	11,012.3	480,116.4

Source: Domestic Markets & Monetary Management Department, SBP

6.2 Sale / Purchase of Treasury Bills under Open Market Operation by SBP with Banks

(Billion Rupees)

PERIODS	2006-07		2007-08		2008-09		2009-10		2010-11	
	Bid Amount		Bid Amount		Bid Amount		Bid Amount		Bid Amount	
	Offered	Accepted	Offered	Accepted	Offered	Accepted	Offered	Accepted	Offered	Accepted
July	159.3	133.5	187.8	141.8	508.0	367.9	201.5	153.6	46.0	20.5
August	131.9	105.7	272.9	228.3	71.1	41.2	-	-	-	-
September	107.0	87.0	81.1	71.3	15.7	9.5	-	-	68.5	54.4
October	92.9	81.3	-	-	44.8	36.0	-	-	224.2	171.5
November	71.5	61.9	163.8	124.7	413.5	223.7	10.5	8.0	130.6	102.5
December	124.7	117.2	86.8	69.0	184.3	124.6	8.5	6.3	203.1	128.6
January	69.6	60.2	74.7	52.3	280.5	178.9	74.0	59.9	19.5	11.5
February	23.9	11.7	95.4	70.9	238.6	142.1	-	-	111.0	51.2
March	50.2	42.1	113.2	77.7	89.1	71.3	41.7	33.9	-	-
April	119.0	88.8	160.2	129.9	37.8	24.3	21.0	16.0	243.3	170.0
May	27.0	11.4	126.4	80.6	18.5	15.8	198.3	119.5		
June	161.8	135.3	290.6	200.4	187.5	114.9	104.0	92.5		
Average										
per month	94.9	78.0	137.7	103.9	174.1	112.5	55.0	40.8	104.6	71.0
per day	3.2	2.6	4.6	3.5	5.8	3.8	1.8	1.4	3.5	2.4

PURCHASE

PERIODS	2006-07		2007-08		2008-09		2009-10		2010-11	
	Amount		Amount		Amount		Amount		Amount	
	Offered	Injected	Offered	Injected	Offered	Injected	Offered	Injected	Offered	Injected
July	-	-	-	-	-	-	102.6	50.0	120.6	75.1
August	27.2	21.2	-	-	117.0	78.2	406.5	250.9	289.4	165.1
September	-	-	-	-	259.2	176.4	276.3	206.0	216.0	196.6
October	-	-	40.9	40.9	214.8	187.3	671.9	546.7	29.5	27.0
November	-	-	-	-	39.9	39.4	468.8	415.2	79.8	67.6
December	31.3	25.8	-	-	15.9	11.2	681.9	648.8	60.6	34.1
January	-	-	41.6	27.5	-	-	639.2	553.2	176.4	106.9
February	-	-	-	-	-	-	429.7	316.6	150.4	119.4
March	51.1	25.0	102.7	82.1	85.1	60.0	501.7	365.2	405.7	230.9
April	-	-	50.1	40.1	378.4	176.8	205.8	139.4	208.1	96.8
May	-	-	63.6	41.8	342.5	237.7	-	-		
June	-	-	-	-	186.3	165.0	170.1	129.1		
Average										
per month	9.1	6.0	24.9	19.4	136.6	94.3	379.5	301.8	173.6	111.9
per day	0.3	0.2	0.8	0.7	4.6	3.1	12.7	10.1	5.8	3.7

6.3 SBP Overnight Repo/ Reverse Repo Facilities

Cash Accommodation

(Million Rupees)

PERIODS	2005-06	2006-07	2007-08	2008-09	2009-10		2010-11	
					SBP Overnight Reverse Repo (Ceiling)	SBP Overnight Repo (Floor)	SBP Overnight Reverse Repo (Ceiling)	SBP Overnight Repo (Floor)
					July	23,861	38,883	111,817
August	48,241	19,032	68,490	42,861	15,880	18,650	90,500	30,300
September	45,245	66,715	121,825	254,378	113,800	52,950	3,500	334,900
October	116,512	27,670	575,455	55,638	9,600	24,050	26,400	68,700
November	91,780	77,702	126,045	149,228	80,200	13,800	12,450	72,850
December	4,520	35,573	427,940	105,625	69,150	69,500	38,200	76,000
January	29,760	7,718	129,107	66,000	60,900	39,600	31,450	24,350
February	12,032	34,435	80,755	6,150	48,400	8,100	68,150	39,350
March	47,815	75,895	89,772	69,930	56,500	45,550	183,350	1,700
April	243,238	51,327	51,609	71,257	50,300	178,100	43,250	99,650
May	55,246	174,980	93,458	2,200	121,650	190,200		
June	44,019	76,830	96,792	27,050	121,150	193,650		
Average								
per month	63,522	57,230	164,422	72,879	64,369	69,546	55,415	78,490
per day	2,117	1,908	5,481	2,429	2,146	2,318	1,847	2,616

SBP Overnight Repo/ Reverse Repo Rates

(Percent per annum)

PERIODS	2005-06	2006-07	2007-08	2008-09	2009-10		2010-11	
					SBP Reverse Repo Rate ¹ (Ceiling)	SBP Repo Rate ² (Floor)	SBP Reverse Repo Rate ¹ (Ceiling)	SBP Repo Rate ² (Floor)
					July	9.00	9.50	9.50
August	9.00	9.50	10.00	13.00	13.00	10.00	13.00	10.00
September	9.00	9.50	10.00	13.00	13.00	10.00	13.50	10.50
October	9.00	9.50	10.00	13.00	13.00	10.00	13.50	10.50
November	9.00	9.50	10.00	15.00	12.50	9.50	14.00	11.00
December	9.00	9.50	10.00	15.00	12.50	9.50	14.00	11.00
January	9.00	9.50	10.00	15.00	12.50	9.50	14.00	11.00
February	9.00	9.50	10.50	15.00	12.50	9.50	14.00	11.00
March	9.00	9.50	10.50	15.00	12.50	9.50	14.00	11.00
April	9.00	9.50	10.50	14.00	12.50	9.50	14.00	11.00
May	9.00	9.50	12.00	14.00	12.50	9.50		
June	9.00	9.50	12.00	14.00	12.50	9.50		

Source: Domestic Markets & Monetary Management Department, SBP

NOTE:1. SBP 3-day repo rate was renamed as SBP reverse repo rate w.e.f. August 17, 2009. SBP reverse repo rate (also known as policy or discount rate) is the rate at which banks borrow from SBP on an overnight basis.

2. SBP Repo rate (introduced w.e.f. August 17, 2009) is the rate at which banks deposit their end-of-day excess cash with SBP on an overnight basis.

6.4 Auction of Government of Pakistan's Market Treasury Bills (Auction Wise)

(Million Rupees)

AUCTION SETTLEMENT DATE	3 Months Treasury Bills				6 Months Treasury Bills	
	Amount Offered	Amount Accepted	Cut-off Yield (%)	Weighted Average (%)	Amount Offered	Amount Accepted
2009-10						
11-02-10	20,638	1,288	11.9201	11.9159	29,675	21,225
25-02-10	35,889	25,189	12.1954	12.1652	44,380	32,980
11-03-10	46,814	23,019	12.1954	12.1841	24,455	21,355
25-03-10	27,095	11,395	12.1954	12.1954	28,055	16,855
08-04-10	31,236	5,561	12.0973	12.0942	57,804	15,929
22-04-10	29,511	22,561	12.0973	12.0973	47,778	24,928
06-05-10	74,656	19,181	11.9659	11.9604	55,237	15,712
20-05-10	27,431	15,887	11.9201	11.8796	64,847	39,197
03-06-10	30,737	15,887	12.0118	11.9898	58,021	45,716
17-06-10	35,209	25,039	12.1036	12.0591	49,257	71,874
2010-11						
15-07-10	91,851	46,336	12.1036	12.0939	72,135	49,235
29-07-10	84,527	48,777	12.1036	12.0841	75,803	67,053
13-08-10	121,847	106,987	12.5171	12.4464	29,553	12,403
26-08-10	95,988	77,318	12.5171	12.5076	37,177	6,044
09-09-10	70,538	59,738	12.6091	12.545	24,181	21,881
22-09-10	65,793	51,743	12.7472	12.6881	11,648	11,148
07-10-10	211,077	66,457	12.8393	12.8273	32,604	21,254
21-10-10	124,127	66,677	12.7933	12.7733	107,911	67,161
04-11-10	168,517	96,359	12.7933	12.7468	73,568	66,968
16-11-10	69,358	48,657	12.8559	12.8124	22,772	8,272
02-12-10	107,438	70,048	13.1620	13.1004	86,166	52,506
18-12-10	125,783	84,023	13.1997	13.1748	66,410	35,974
30-12-10	85,815	73,715	13.2542	13.2032	27,492	17,592
13-01-11	180,640	158,940	13.4389	13.3746	19,116	12,816
27-01-11	209,318	181,818	13.6699	13.5672	19,260	14,010
10-02-11	210,542	86,292	13.5313	13.5227	83,738	71,738
24-02-11	201,334	92,639	13.4851	13.4448	66,433	54,833
10-03-11	174,243	47,113	13.3927	13.3927	112,472	11,198
24-03-11	73,762	16,647	13.2542	13.2542	132,972	107,122
07-04-11	80,811	16,158	13.3004	13.2500	155,983	148,633
21-04-11	55,043	27,943	13.2542	13.2497	269,833	179,729

6.4 Auction of Government of Pakistan's Market Treasury Bills (Auction Wise)

(Million Rupees)

AUCTION SETTLEMENT DATE	6 Months Treasury Bills		12 Months Treasury Bills			
	Cut-off Yield (%)	Weighted Average (%)	Amount Offered	Amount Accepted	Cutt-off Yield (%)	Weighted Average (%)
2009-10						
11-02-10	12.0547	12.0196	58,770	45,370	12.1031	12.0506
25-02-10	12.2803	12.215	60,543	59,518	12.3429	12.2697
11-03-10	12.3481	12.3	64,381	48,681	12.4062	12.3607
25-03-10	12.3481	12.3351	88,452	68,052	12.4062	12.3578
08-04-10	12.2803	12.2656	138,474	57,274	12.3302	12.3555
22-04-10	12.2577	12.2577	92,054	43,379	12.305	12.3429
06-05-10	12.1448	12.1332	120,329	53,154	12.2292	12.2076
20-05-10	12.0997	12.0884	73,275	25,100	12.1913	12.1698
03-06-10	12.2351	12.1673	68,366	53,154.42	12.3429	12.3018
17-06-10	12.3029	12.2705	84,373	25,100.17	12.4188	12.3809
2010-11						
15-07-10	12.3481	12.3165	49,210	20,510	12.4568	12.4367
29-07-10	12.3707	12.334	32,712	16,312	12.4568	12.4483
13-08-10	12.6876	12.6491	18,607	3,207	12.7873	12.7845
26-08-10	12.6649	12.6512	25,083	12,083	12.7873	12.7846
09-09-10	12.7783	12.6899	12,860	2,860	12.7873	12.7872
22-09-10	12.8464	12.8226	4,343	Bids Rej.	Bids Rej.	Bids Rej.
07-10-10	13.1420	13.0719	9,260	6,510	13.2353	13.2175
21-10-10	13.1193	13.0785	8,056	Bids Rej.	Bids Rej.	Bids Rej.
04-11-10	13.1648	13.1099	8,021	3,021	13.2353	13.2353
16-11-10	13.2021	13.1833	9,000	2,000	13.3037	13.3037
02-12-10	13.3928	13.3701	14,105	5,105	13.6738	13.6548
18-12-10	13.4032	13.3888	19,312	6,812	13.6973	13.6882
30-12-10	13.4613	13.4073	13,150	9,650	13.7775	13.7250
13-01-11	13.5527	13.4954	10,134	Bids Rejected	Bid Rejected	Bid Rejected
27-01-11	13.7128	13.6195	12,500	8,500	13.8814	13.8699
10-02-11	13.6899	13.4954	27,480	21,680	13.8554	13.8339
24-02-11	13.6899	13.6195	21,833	20,233	13.8554	13.8473
10-03-11	13.6899	13.6453	35,871	31,871	13.8554	13.8401
24-03-11	13.6441	13.6085	106,065	63,790	13.8035	13.7726
07-04-11	13.6899	13.6561	67,689	62,689	13.8684	13.8322
21-04-11	13.6213	13.6098	52,644	50,244	13.8684	13.8330

Source: Domestic Markets & Monetary Management Department, SBP

6.5 Auction of Pakistan Investment Bonds (PIBs)

(Million Rupees)

AUCTION SETTLEMENT DATE	Tenure	Coupon Rate (%)	Amount Offered	Amount Accepted	Price Accepted = Rs.100	Cut-off Yield Accepted (%)	Weighted Average Yield Accepted (%)
31-01-11	3-Years	11.25	-	-	-	-	-
	5-Years	11.50	-	-	-	-	-
	7-Years	11.75	-	-	-	-	-
	10-Years	12.00	-	-	-	-	-
	15-Years	12.50	-	-	-	-	-
	20-Years	13.00	-	-	-	-	-
	30-Years	13.75	-	-	-	-	-
17-02-11	3-Years	11.25	11,400.00	7,120.00	94.00	14.2473	14.2004
	5-Years	11.50	2,845.00	1,766.00	91.04	14.2924	14.2766
	7-Years	11.75	950.00	-	-	-	-
	10-Years	12.00	34,180.00	18,962.80	88.40	14.2710	14.2206
	15-Years	12.50	300.00	-	-	-	-
	20-Years	13.00	300.00	-	-	-	-
	30-Years	13.75	3,300.00	-	-	-	-
17-03-11	3-Years	11.25	11,173.00	4,835.20	94.46	14.0789	14.0479
	5-Years	11.50	5,229.30	1,701.00	91.68	14.1108	14.1081
	7-Years	11.75	950.00	-	-	-	-
	10-Years	12.00	30,323.00	18,694.60	89.14	14.1190	14.0791
	15-Years	12.50	50.00	-	-	-	-
	20-Years	13.00	1,000.00	-	-	-	-
	30-Years	13.75	1,000.00	-	-	-	-
28-04-11	3-Years	11.25	9,283.00	6,595.90	94.82	14.0036	13.9929
	5-Years	11.50	4,853.00	3,957.00	91.95	14.0718	14.0413
	7-Years	11.75	650.00	-	-	-	-
	10-Years	12.00	25,802.90	15,567.00	89.29	14.0995	14.0838
	15-Years	12.50	50.00	-	-	-	-
	20-Years	13.00	1,000.00	-	-	-	-
	30-Years	13.75	950.00	-	-	-	-

Source: Domestic Markets & Monetary Management Department, SBP

6.6 Monthly KIBOR

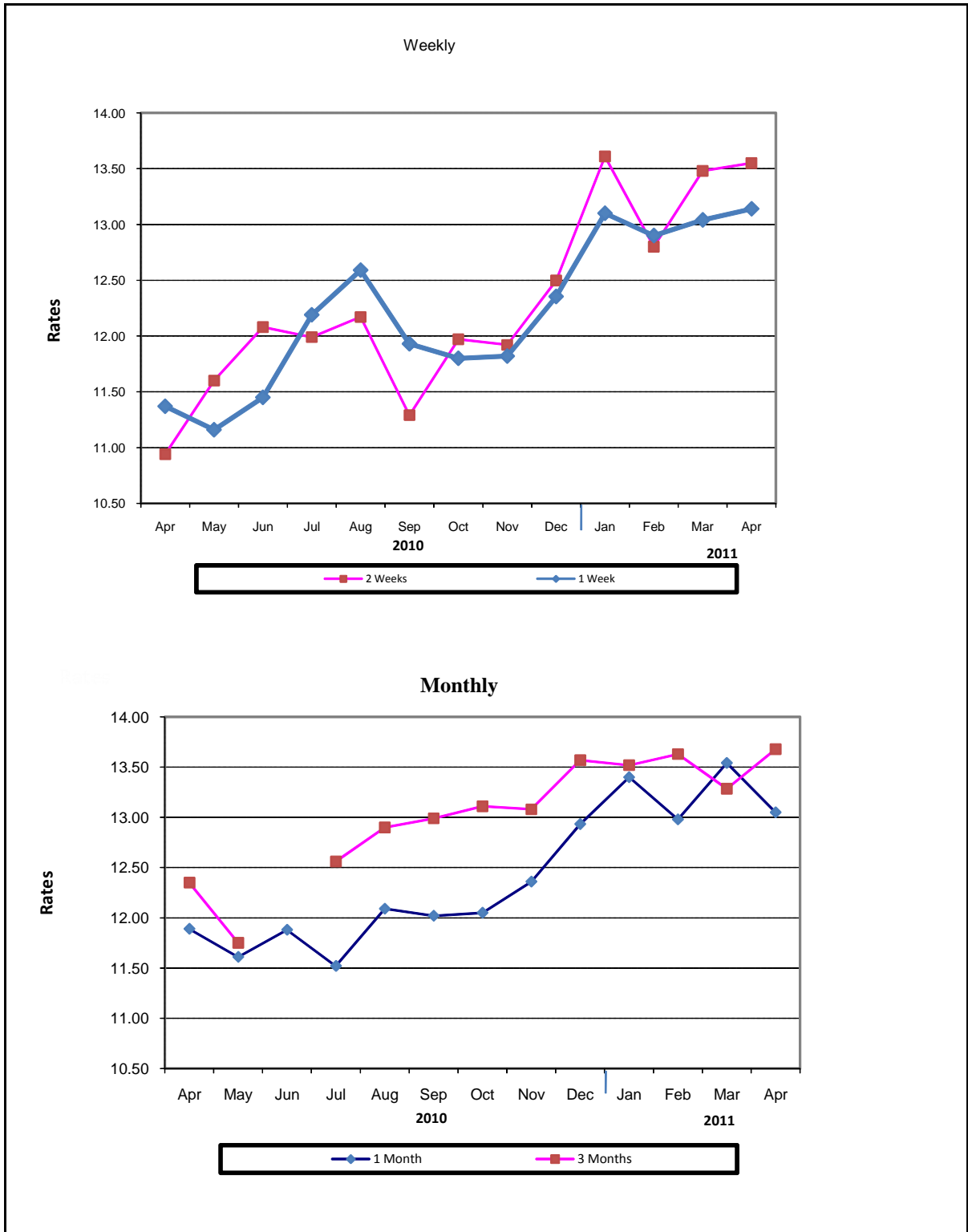
(Percent per annum)

PERIODS			1 Week		2 Weeks		1Month		3 Months		6 Months		9 Months		12 Months	
			Bid	Offer	Bid	Offer	Bid	Offer	Bid	Offer	Bid	Offer	Bid	Offer	Bid	Offer
2010	Apr.	Month Average	11.65	12.15	11.77	12.27	11.87	12.37	12.04	12.29	12.11	12.36	12.17	12.67	12.23	12.73
		End-Month	10.84	11.34	11.32	11.82	11.63	12.13	11.99	12.24	12.08	12.33	12.14	12.64	12.23	12.73
	May	Month Average	11.31	11.81	11.46	11.96	11.62	12.12	11.87	12.12	11.99	12.24	12.07	12.57	12.16	12.66
		End-Month	11.87	12.37	11.81	12.31	11.81	12.31	11.91	12.16	12.02	12.27	12.08	12.58	12.16	12.66
	Jun.	Month Average	11.66	12.16	11.78	12.28	11.89	12.39	12.01	12.26	12.10	12.35	12.13	12.63	12.19	12.69
		End-Month	11.99	12.49	11.97	12.47	11.95	12.45	12.04	12.29	12.12	12.37	12.14	12.64	12.22	12.72
	Jul.	Month Average	11.69	12.19	11.76	12.26	11.87	12.37	12.05	12.30	12.13	12.38	12.17	12.67	12.23	12.73
		End-Month	11.84	12.34	11.85	12.35	11.89	12.39	12.08	12.33	12.17	12.42	12.20	12.70	12.26	12.76
	Aug.	Month Average	12.09	12.59	12.16	12.66	12.26	12.76	12.45	12.70	12.58	12.83	12.63	13.13	12.71	13.21
		End-Month	12.21	12.71	12.24	12.74	12.30	12.80	12.47	12.72	12.62	12.87	12.69	13.19	12.76	13.26
	Sep.	Month Average	12.02	12.52	12.31	12.81	12.48	12.98	12.84	13.09	13.02	13.27	13.14	13.64	13.23	13.73
		End-Month	11.78	12.28	11.96	12.46	12.23	12.73	12.53	12.78	12.67	12.92	12.75	13.25	12.82	13.32
	Oct.	Month Average	11.81	12.30	11.99	12.48	12.27	12.77	12.76	13.01	12.96	13.12	13.11	13.61	13.21	13.71
		End-Month	12.17	12.67	12.22	12.72	12.32	12.82	12.74	12.99	12.98	13.23	13.11	13.61	13.21	13.71
	Nov.	Month Average	11.98	12.51	12.08	12.64	12.30	12.81	12.78	13.03	13.04	13.29	13.17	13.67	13.25	13.75
		End-Month	12.85	13.35	12.83	13.33	12.89	13.39	13.11	13.36	13.35	13.60	13.47	13.97	13.59	14.09
	Dec.	Month Average	12.38	12.88	12.52	13.02	12.74	13.24	13.14	13.39	13.35	13.60	13.45	13.95	13.60	14.10
		End-Month	12.80	13.30	12.82	13.32	12.87	13.37	13.21	13.46	13.37	13.62	13.48	13.98	13.62	14.12
2011	Jan.	Month Average	12.65	13.15	12.73	13.23	12.83	13.33	13.34	13.59	13.49	13.74	13.58	14.08	13.70	14.20
		End-Month	12.76	13.26	12.80	13.30	12.89	13.39	13.47	13.72	13.58	13.83	13.66	14.16	13.78	14.28
	Feb.	Month Average	12.46	12.96	12.64	13.14	12.78	13.28	13.37	13.62	13.51	13.76	13.64	14.14	13.76	14.26
		End-Month	12.64	13.14	12.71	13.21	12.79	13.29	13.34	13.59	13.51	13.76	13.63	14.13	13.75	14.25
	Mar.	Month Average	12.90	13.40	12.91	13.41	12.91	13.41	13.30	13.55	13.49	13.74	13.63	14.13	13.75	14.25
		End-Month	13.19	13.69	13.13	13.63	13.09	13.59	13.27	13.52	13.48	13.73	13.63	14.13	13.75	14.25
	Apr.	Month Average	12.70	13.20	12.79	13.29	12.93	13.43	13.22	13.47	13.48	13.73	13.61	14.11	13.72	14.18
		End-Month	12.47	12.97	12.51	13.01	12.72	13.22	13.13	13.38	13.42	13.67	13.58	14.08	13.69	14.19

KIBOR :Karachi Interbank Offered Rate

Source: Domestic Markets & Monetary Management Department, SBP

Inter- Bank Average Call Rates



6.7 Indicative Inter-Bank Average Call Rates

		(% Per Annum)						
PERIODS		Overnight	1 Week	2 Weeks	1 Month	3 Months	6 Months	
2010	Apr.	11.16	11.37	10.94	11.89	12.35	11.91	
	May	11.38	11.16	11.60	11.61	11.75	11.42	
	Jun.	11.00	11.45	12.08	11.88	
	Jul.	11.75	12.19	11.99	11.52	12.56	12.00	
	Aug.	12.16	12.59	12.17	12.09	12.90	12.80	
	Sep.	11.10	11.93	11.29	12.02	12.99	...	
	Oct.	12.05	11.80	11.97	12.05	13.11	-	
	Nov.	12.15	11.82	11.92	12.36	13.08	-	
	Dec.	12.61	12.35	12.50	12.93	13.57	13.25	
	2011	Jan.	12.85	13.10	13.61	13.40	13.52	-
		Feb.	12.44	12.90	12.80	12.98	13.63	-
		Mar.	13.50	13.04	13.48	13.54	13.29	13.37
Apr.		12.66	13.14	13.55	13.05	13.68	-	

Source: Domestic Markets & Monetary Management Department, SBP

6.8 SBP Rates for Market to Market (M2M) of Major Currencies

Date	US Dollar			Euro			Japanese Yen			UK Pound Sterling		
	Ready	1Week	1 Month	Ready	1Week	1 Month	Ready	1Week	1 Month	Ready	1Week	1 Month
1-Apr-11	85.3257	85.3687	85.7788	120.7657	120.8191	121.3396	1.0195	1.0200	1.0251	136.9947	137.0526	137.6745
2-Apr-11	85.4133	85.4446	85.8396	121.4877	121.5248	122.0270	1.0160	1.0164	1.0212	137.6094	137.6487	138.2487
4-Apr-11	85.4262	85.4373	85.8147	121.4376	121.4443	121.9196	1.0158	1.0159	1.0206	137.9590	137.9660	138.5388
5-Apr-11	85.2900	85.3467	85.7163	120.8090	120.8782	121.3366	1.0112	1.0119	1.0164	138.3574	138.4385	138.9970
6-Apr-11	85.1758	85.2621	85.6275	121.8482	121.9580	122.4164	1.0008	1.0019	1.0063	138.8876	139.0169	139.5718
7-Apr-11	84.8571	84.9925	85.5075	121.2014	121.3762	122.0517	0.9966	0.9982	1.0044	138.6183	138.8286	139.6808
8-Apr-11	84.8278	84.9943	85.5068	122.1690	122.3867	123.0624	0.9950	0.9970	1.0031	138.9352	139.1966	139.9964
9-Apr-11	84.9982	85.1596	85.6674	123.1029	123.3146	123.9875	1.0036	1.0055	1.0116	139.3418	139.5949	140.3883
11-Apr-11	84.7690	84.9476	85.4770	122.5463	122.7810	123.4826	1.0016	1.0038	1.0102	138.6693	138.9500	139.7764
12-Apr-11	84.5143	84.6910	85.2179	122.1654	122.3985	123.0943	1.0021	1.0042	1.0106	137.2893	137.5652	138.3798
13-Apr-11	84.4100	84.5800	85.1098	122.3692	122.5796	123.2937	1.0046	1.0067	1.0131	137.2422	137.5012	138.3294
14-Apr-11	84.2813	84.4547	85.0036	121.3103	121.5345	122.2649	1.0131	1.0152	1.0219	137.4628	137.7329	138.5904
15-Apr-11	84.2210	84.4113	84.9817	121.7415	121.9943	122.7527	1.0105	1.0128	1.0197	137.7982	138.0984	138.9924
16-Apr-11	84.3462	84.5267	85.0876	121.7031	121.9416	122.6856	1.0154	1.0176	1.0245	137.4885	137.7717	138.6464
18-Apr-11	84.2664	84.4514	85.0063	120.7748	121.0182	121.7489	1.0178	1.0200	1.0268	137.1856	137.4757	138.3396
19-Apr-11	84.5670	84.7570	85.3254	120.7320	120.9802	121.7198	1.0240	1.0263	1.0333	137.7723	138.0697	138.9511
20-Apr-11	84.4464	84.6517	85.2436	122.4811	122.7551	123.5450	1.0204	1.0229	1.0301	138.0657	138.3891	139.3152
21-Apr-11	84.3563	84.5624	85.1639	123.5525	123.8296	124.6386	1.0302	1.0327	1.0402	139.7194	140.0483	141.0009
22-Apr-11	84.2748	84.4716	85.0662	122.7252	122.9880	123.7811	1.0277	1.0301	1.0374	139.1251	139.4378	140.3780
23-Apr-11	84.2792	84.4707	85.0593	122.6557	122.9133	123.6947	1.0284	1.0308	1.0381	139.1533	139.4573	140.3875
25-Apr-11	84.5454	84.7340	85.3217	123.4025	123.6540	124.4389	1.0304	1.0327	1.0400	139.7197	140.0192	140.9529
26-Apr-11	84.6785	84.8632	85.4511	123.8466	124.0923	124.8701	1.0359	1.0382	1.0455	139.6942	139.9864	140.9087
27-Apr-11	84.5347	84.7220	85.3054	124.0335	124.2825	125.0560	1.0288	1.0312	1.0384	140.0233	140.3210	141.2447
28-Apr-11	84.5374	84.7340	85.3861	125.5211	125.7875	126.6722	1.0343	1.0368	1.0449	140.9069	141.2219	142.2619
29-Apr-11	84.6695	84.8625	85.4742	125.8654	126.1282	126.9532	1.0411	1.0435	1.0512	140.9028	141.2113	142.1830
30-Apr-11	84.6936	84.8824	85.4754	125.3973	125.6527	126.4468	1.0442	1.0465	1.0540	141.4933	141.7960	142.7404

6.8 SBP Rates for Market to Market (M2M) of Major Currencies

Date	Swiss Frank			Australian Dollar			Saudi Arabian Riyal			Kuwaiti Dinar		
	Ready	1Week	1 Month	Ready	1Week	1 Month	Ready	1Week	1 Month	Ready	1Week	1 Month
1-Apr-11	92.4990	92.5488	93.0074	88.3249	88.2929	88.4647	22.7523	22.7647	22.8743	307.6021	307.7321	309.1684
2-Apr-11	92.3837	92.4206	92.8621	88.7530	88.7085	88.8652	22.7757	22.7849	22.8906	308.1959	308.3058	309.6668
4-Apr-11	92.4626	92.4777	92.9006	88.6083	88.5426	88.6806	22.7797	22.7830	22.8833	308.0032	308.0377	309.3145
5-Apr-11	92.3601	92.4248	92.8407	87.8188	87.7993	87.9061	22.7431	22.7591	22.8580	307.4123	307.5611	308.8265
6-Apr-11	92.8093	92.9068	93.3179	88.4678	88.4796	88.5935	22.7129	22.7369	22.8346	307.4222	307.6777	308.9071
7-Apr-11	92.4420	92.5925	93.1652	88.9345	88.9978	89.2806	22.6283	22.6653	22.8029	306.2313	306.6828	308.4520
8-Apr-11	93.0027	93.1882	93.7603	89.2558	89.3530	89.6331	22.6204	22.6658	22.8027	306.4871	307.0632	308.8169
9-Apr-11	93.5486	93.7294	94.2983	89.7879	89.8791	90.1552	22.6650	22.7080	22.8446	307.3172	307.8714	309.5984
11-Apr-11	93.2757	93.4751	94.0675	89.4016	89.5114	89.8091	22.6045	22.6530	22.7940	306.4623	307.0856	308.9214
12-Apr-11	93.7433	93.9426	94.5394	88.6259	88.7329	89.0041	22.5359	22.5840	22.7248	305.4753	306.1010	307.9905
13-Apr-11	93.9716	94.1664	94.7669	88.6094	88.6532	88.9957	22.5084	22.5538	22.6949	305.3656	305.9670	307.8558
14-Apr-11	94.0850	94.2825	94.9067	88.3563	88.4382	88.7663	22.4741	22.5199	22.6666	304.6443	305.2624	307.1437
15-Apr-11	94.3124	94.5290	95.1794	88.6847	88.7955	89.1478	22.4583	22.5090	22.6612	304.4657	305.1304	307.1035
16-Apr-11	94.4685	94.6739	95.3141	89.1413	89.2415	89.5854	22.4914	22.5395	22.6891	305.0498	305.6801	307.6362
18-Apr-11	94.0840	94.2946	94.9263	88.8210	88.9369	89.2623	22.4701	22.5204	22.6673	304.5461	305.1871	307.1371
19-Apr-11	94.1621	94.3779	95.0255	88.7953	88.9152	89.2300	22.5503	22.6013	22.7531	305.5787	306.2584	308.2008
20-Apr-11	94.4855	94.7191	95.3938	90.0157	90.1544	90.5221	22.5182	22.5727	22.7313	305.8049	306.5343	308.5740
21-Apr-11	95.7126	95.9509	96.6466	90.8433	90.9853	91.3324	22.4929	22.5478	22.7086	306.1103	306.8387	308.9398
22-Apr-11	95.1666	95.3933	96.0734	90.5196	90.6565	90.9906	22.4712	22.5235	22.6824	305.8988	306.5870	308.6638
23-Apr-11	95.1286	95.3491	96.0268	90.5200	90.6461	90.9794	22.4729	22.5239	22.6810	304.5341	305.1990	307.2395
25-Apr-11	95.8619	96.0798	96.7603	90.8398	90.9621	91.2943	22.5445	22.5948	22.7517	306.8632	307.5087	309.5573
26-Apr-11	96.6043	96.8195	97.5075	91.0760	91.1944	91.5263	22.5797	22.6289	22.7859	307.4692	308.1005	310.1617
27-Apr-11	96.5173	96.7357	97.4172	91.5468	91.6696	92.0100	22.5411	22.5910	22.7467	307.1477	307.8030	309.8465
28-Apr-11	96.9521	97.1818	97.9449	92.3021	92.4354	92.8646	22.5418	22.5942	22.7687	308.0553	308.7438	311.0435
29-Apr-11	97.6186	97.8451	98.5650	92.4972	92.6275	93.0119	22.5767	22.6282	22.7925	308.3387	309.0152	311.1831
30-Apr-11	97.8777	98.0999	98.7996	92.8877	93.0132	93.3792	22.5831	22.6335	22.7922	308.5386	309.2002	311.2895

Source: Domestic Markets & Monetary Management Department, SBP

6.9 Secondary Market Transactions in Government Securities

(Billion Rupees)

SECURITIES/ TRANSACTIONS	2010									2011			
	Apr.	May	Jun	Jul.	Aug.	Sep.	Oct.	Nov.	Dec.	Jan.	Feb.	Mar.	Apr.
PIBs													
Purchases	74.7	51.6	63.5	72.7	56.3	50.0	58.8	57.2	68.5	45.4	72.3	56.8	90.8
Non Banks													
Repo	1.3	1.5	1.4	2.3	2.2	1.7	3.6	3.1	4.6	1.6	4.4	3.6	5.7
Outright	2.7	5.9	3.3	2.1	0.6	1.5	2.5	0.5	12.0	6.3	19.6	7.9	18.3
Banks/PDs													
Repo	21.1	31.3	26.1	42.3	29.1	23	46.4	43.7	38.6	31.8	27.8	26.9	39.2
Outright	10.5	11.7	7.3	5.3	7.2	4.9	6.3	5.0	13.3	5.6	20.4	18.4	27.5
SBP													
Repo	39.2	1.2	25.4	20.7	17.3	18.9	-	4.9	-	-	-	-	-
Outright	-	-	-	-	-	-	-	-	-	-	-	-	-
Sales	74.7	51.6	63.5	72.7	56.3	50.0	58.8	57.2	68.5	45.4	72.3	56.8	90.8
Non Banks													
Repo	3.4	3.1	2.2	4.0	3.1	3.5	6.1	4.0	7.6	6.8	5.0	5.2	3.8
Outright	1.3	2.1	1.2	0.9	0.5	0.7	0.9	..	3.2	1.1	3.0	3.1	2.5
Banks/PDs													
Repo	58.2	30.9	50.7	61.4	45.4	40.0	43.8	47.7	35.7	26.7	27.2	25.3	41.2
Outright	11.9	15.5	9.4	6.5	7.3	5.8	7.9	5.4	22.1	10.9	37.0	23.2	43.4
SBP													
Repo	-	-	-	-	-	-	-	-	-	-	-	-	-
Outright	-	-	-	-	-	-	-	-	-	-	-	-	-
Net Position	-	-	-	-	-	-	-	-	-	-	-	-	-
Treasury Bills													
Purchases	1,479.2	1,381.6	1,718.8	1,325.6	1,442.7	1,415.8	1,391.7	1,392.7	1,540.6	1,542.3	1,479.1	1,745.4	1,895.4
Non Banks													
Repo	22.1	30.7	18.5	17.2	32.1	56.1	47.0	23.9	35.2	42.5	29.8	39.8	44.8
Outright	77.8	52.0	120.5	80.5	115.2	97.5	97.1	120.6	86.4	121.1	182.1	146.7	203.6
Banks/PDs													
Repo	1,107.5	1,062.1	1,199.5	1,002.7	976.5	970.7	1,069.1	1,048.9	1,180.0	1,060.9	886.2	918.0	1,228.8
Outright	123.7	116.8	155.4	113.9	89.3	110.8	115.6	126.3	167.5	179.5	195.3	232.3	278.2
SBP													
Repo	148.1	120.0	224.9	111.3	229.6	180.8	62.9	73.1	71.5	138.3	185.8	408.5	140.0
Sales	1,479.2	1,381.6	1,718.8	1,325.6	1,442.7	1,415.8	1,391.7	1,392.7	1,540.6	1,542.3	1,479.1	1,745.4	1,895.4
Non Banks													
Repo	97.3	77.3	97.9	84.9	64.8	28.7	42.7	76.1	70.5	75.1	55.0	65.1	52.0
Outright	11.9	19.6	20.5	9.0	16.8	34.4	15.9	26.3	37.4	26.7	29.2	45.9	48.6
Banks/PDs													
Repo	1,006.4	988.9	1,107.8	1,012.3	1,143.1	789.5	896.1	894.4	1,008.6	1,130.8	956.1	1,299.5	1,092.0
Outright	189.6	149.2	255.3	185.4	187.8	173.9	196.8	220.6	216.5	273.9	348.2	333.1	433.2
SBP													
Repo	174.1	146.5	237.3	34.0	30.3	389.3	240.2	175.4	207.7	35.9	90.6	1.7	269.6
Net Position	-	-	-	-	-	-	-	-	-	-	-	-	-

PDs: Primary Dealers

Source: Domestic Markets & Monetary Management Department, SBP