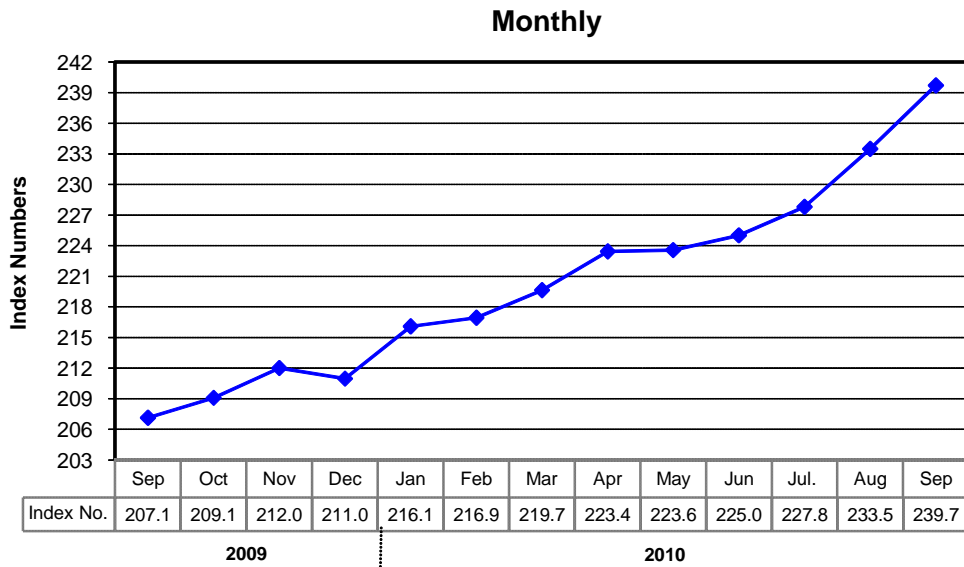
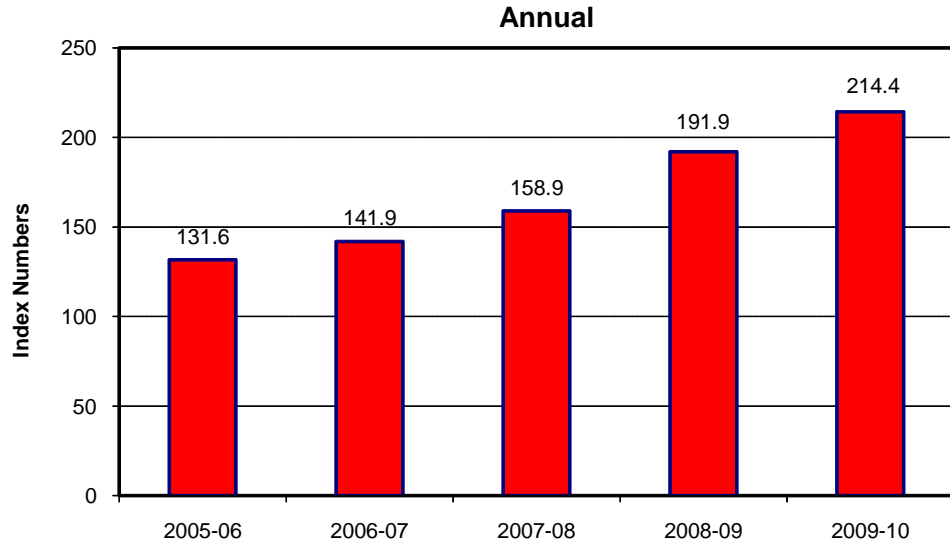


8.1 Combined Consumer Price Index Numbers By Commodity Groups - All Urban (2000-01=100)

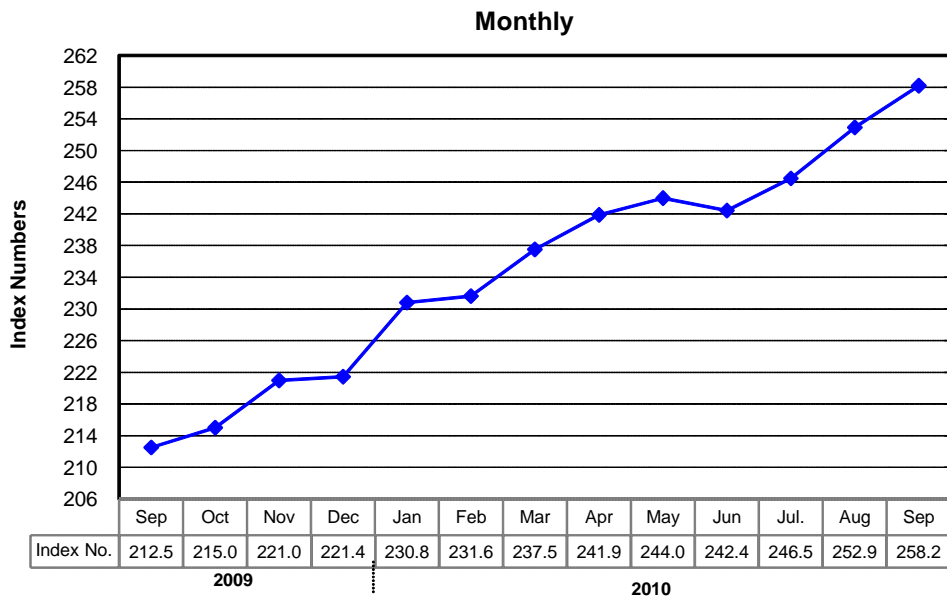
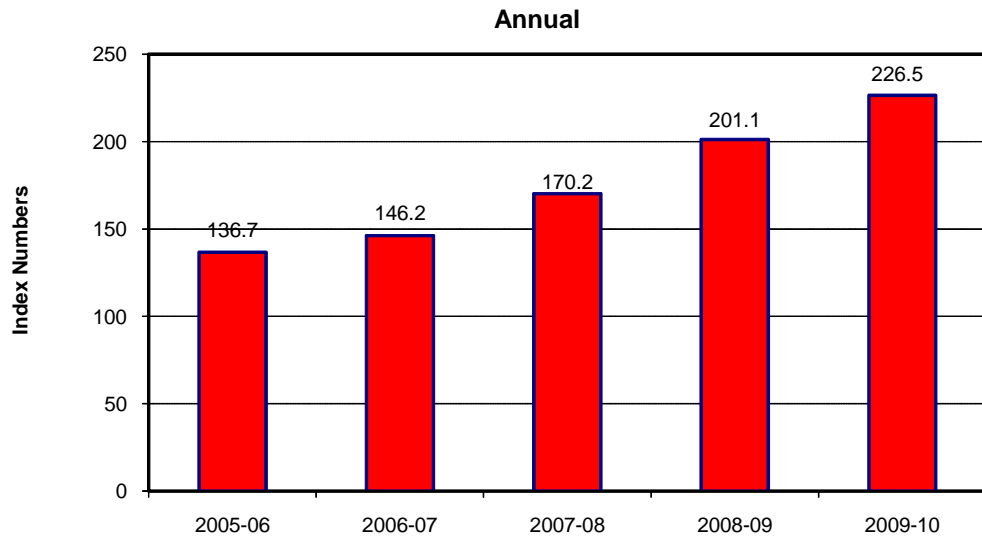
YEAR / MONTH	General	Food and Beverages	Apparel Textile and	House Rent	Fuel and Lighting	Household Furniture and Equipment	Transport and Communication	Recreation & Entertainment	Education	Cleaning, Laundry and Personal Appearance	Medicare
2005-06	131.64	134.39	117.58	132.36	137.09	123.41	145.90	105.65	125.03	119.49	110.66
2006-07	141.87	148.21	123.70	141.21	149.43	131.64	148.96	105.76	133.82	124.53	120.91
2007-08	158.90	174.36	133.79	154.47	158.48	141.08	155.55	107.86	140.88	138.28	132.23
2008-09	191.90	215.69	152.82	180.90	198.92	159.58	192.55	120.00	165.27	163.17	147.25
2009-10	214.41	242.59	162.47	205.88	226.90	169.76	204.15	127.09	185.74	180.52	157.02
2009											
Aug.	206.21	234.69	157.79	198.69	207.84	165.37	194.45	121.65	181.06	172.64	150.64
Sep.	207.14	235.59	158.97	200.50	209.16	166.11	192.13	121.69	181.81	174.20	150.86
Oct.	209.11	238.12	159.13	202.29	212.12	166.77	192.39	121.69	182.80	176.86	153.89
Nov.	212.02	242.40	159.95	203.90	213.97	168.10	197.68	122.61	183.65	179.64	153.91
Dec.	210.99	238.16	160.70	205.61	215.18	169.01	197.26	122.62	185.19	181.14	153.98
2010											
Jan.	216.09	242.91	161.48	207.22	244.09	170.02	203.09	122.70	185.65	182.79	158.16
Feb.	216.93	243.17	162.53	208.78	243.96	171.14	205.36	126.43	185.97	183.71	158.79
Mar.	219.65	247.55	163.88	210.08	243.82	171.82	212.24	126.54	186.28	184.18	159.10
Apr.	223.44	252.53	167.51	211.25	242.79	173.31	224.60	139.17	191.30	185.00	163.25
May	223.58	252.62	169.75	212.37	240.78	174.72	219.79	139.17	193.18	186.02	164.47
Jun.	225.03	254.42	170.99	213.21	242.34	175.90	221.20	139.16	193.42	188.47	166.58
Jul.	227.79	258.19	173.11	213.98	251.82	177.79	221.99	139.12	193.61	190.23	167.20
Aug.	233.50	271.35	173.92	215.05	252.08	179.47	222.20	139.25	193.66	190.23	167.69
Sep.	239.69	285.63	175.04	215.77	252.69	180.62	222.01	139.25	193.70	191.61	169.67

Source : Federal Bureau of Statistics

Index Numbers of Consumer Prices (2000 - 01=100)



Index Numbers of Wholesale Prices (2000-01=100)



8.2 Index Numbers of Wholesale Prices by Commodity Groups (2000-01=100)

YEAR / MONTH		General	Food	Raw Materials	Fuel, Lighting and Lubricants	Manufactures	Building Materials
2005-06		136.68	133.78	121.93	174.57	115.39	144.18
2006-07		146.18	145.67	138.85	184.10	119.91	151.93
2007-08		170.15	173.27	156.57	223.34	128.33	177.18
2008-09		201.10	213.54	184.45	258.96	140.67	213.00
2009-10		226.49	239.01	238.11	296.48	154.94	201.40
2009	Aug.	212.16	229.52	197.76	275.45	143.57	198.98
	Sep.	212.53	230.34	195.69	276.34	144.39	194.80
	Oct.	215.01	232.35	197.29	283.96	145.36	190.23
	Nov.	220.98	236.69	208.71	294.39	150.65	187.33
	Dec.	221.43	235.06	226.19	290.11	152.91	186.76
2010	Jan.	230.80	241.37	235.19	313.87	156.61	196.26
	Feb.	231.64	242.67	250.35	304.47	159.31	200.37
	Mar.	237.51	246.68	274.70	312.23	161.77	202.43
	Apr.	241.88	248.53	285.83	318.67	164.72	217.18
	May	243.98	248.81	295.35	316.79	170.15	221.07
	Jun.	242.44	251.73	296.34	304.00	168.82	220.29
	Jul.	246.48	256.40	299.80	309.51	172.38	216.33
	Aug.	252.93	267.12	302.27	317.83	173.16	214.88
	Sep.	258.22	279.03	309.74	313.03	175.40	215.35

Source : Federal Bureau of Statistics

8.3 Combined Sensitive Price Indicator (SPI) by Income Groups (2000-01 =100)

YEAR / MONTH	INCOME GROUP					
	Group-I	Group-II	Group-III	Group-IV	Combined	
	Up to Rs.3000	Rs.3001 to Rs.5000	Rs.5001 to Rs.12000	Above Rs.12000		
2005-06	136.56	136.15	135.99	139.80	136.43	
2006-07	151.34	150.44	149.97	152.32	149.29	
2007-08	176.77	175.15	172.60	170.45	170.55	
2008-09	218.16	216.02	213.77	208.87	209.29	
2009-10	247.22	245.28	242.77	235.70	236.87	
2009	Aug.	235.70	233.79	231.24	222.78	225.18
	Sep.	237.02	235.14	232.80	225.77	227.34
	Oct.	237.86	236.09	233.60	225.56	227.73
	Nov.	243.79	241.74	238.44	229.13	232.14
	Dec.	245.40	242.66	238.85	230.46	232.81
2010	Jan.	252.46	250.81	247.78	239.00	240.25
	Feb.	253.87	251.97	249.06	241.94	242.37
	Mar.	255.84	254.02	251.47	244.42	244.98
	Apr.	256.94	255.08	253.00	247.23	247.50
	May	256.78	254.90	253.61	250.68	249.51
	Jun.	259.23	257.10	255.66	250.99	250.61
	Jul.	264.02	262.34	260.53	254.77	255.13
	Aug.	271.58	269.75	267.49	260.62	261.70
	Sep.	283.30	280.91	277.62	267.95	270.75

Note: SPI figures revised as it is computed on 53 items instead of 51 items.

Source : Federal Bureau of
Statistics

8.4 Bullion Prices

(Rupees per 10 Grams)

YEAR / MONTH	GOLD TEZABI	SILVER TEZABI
	Karachi	
2005-06	10,317	180
2006-07	12,619	228
2007-08	16,695	306
2008-09	22,195	329
2009-10	29,587	215
2009		
Sep.	26,215	382
Oct.	28,073	425
Nov.	30,671	454
Dec.	31,048	482
2010		
Jan.	31,289	487
Feb.	30,704	461
Mar.	30,555	458
Apr.	30,910	468
May	32,346	475
Jun.	33,544	482
Jul.	33,150	478
Aug.	33,087	482
Sep.	34,692	519

Figures are monthly / yearly averages

Source: Daily Business Recorder