

6.1 Government of Pakistan's Treasury Bills

(Million Rupees)

PERIODS	3 months Government of Pakistan Treasury Bills						6 months Government of Pakistan Treasury Bills		
	Discount		Discharged	Discount		Outstanding Balance	Discount		Discharged
	Issue	Allowed		Paid	Issue		Allowed		
2005 Jun.	74,533.5	1,237.8	76,332.8	867.2	254,698.5	59,097.9	273.1	-	
Dec.	2,734.1	50.9	8,280.6	154.4	14,615.3	1,728.9	71.1	59,097.9	
2006 Jun.	1,800.8	34.2	12,109.3	225.7	2,095.3	623.8	26.2	1,728.9	
Dec.	793.6	15.8	27,846.2	553.8	20,995.0	5,124.8	225.2	623.8	
2007 Jun.	-	-	5,147.5	102.5	3,001.7	299.7	13.3	5,124.8	
Dec.	7,912.0	164.8	-	-	8,026.0	17,332.5	793.6	300.0	
2008 Jun.	65,661.5	1,668.2	489.3	10.8	90,645.9	3,441.3	192.4	17,332.5	
Dec.	146,373.8	4,662.8	49,133.6	1,420.6	412,083.6	6,169.5	431.0	3,441.3	
2009 Jun.	47.0	1.4	44.730	1.19	8,541.2	9,219.0	576.1	6,169.5	
Nov.	154,561.5	4,774.9	72,051.4	2,027.2	314,843.4	1,892.3	132.2	3,470.7	
2008 Dec.	146,373.8	4,662.8	49,133.6	1,420.6	412,083.6	6,169.5	431.0	3,441.3	
2009 Jan.	153,983.5	4,871.7	164,080.9	4,802.0	401,986.2	26,332.9	1,837.1	-	
Feb.	56,651.6	1,742.2	181,630.0	5,751.5	277,007.7	82,444.1	5,528.5	-	
Mar.	44,726.9	1,185.5	130,408.7	4,130.4	191,325.9	48,560.3	2,834.7	3,01.9	
Apr.	5,955.8	173.8	89,947.4	2,855.3	107,334.4	13,301.3	848.7	1,553.0	
May.	2,538.3	75.7	56,651.6	1,742.2	53,221.2	8,758.8	573.2	1,892.3	
Jun.	47.0	1.40	44.730	1.19	8,541.2	9,219.0	576.1	6,169.5	
Jul.	11,504.7	299.5	8,494.2	249.6	11,551.7	11,475.9	651.5	26,322.9	
Aug.	2,514.5	71.5	35.0	1.0	14,031.2	9,604.1	595.9	82,444.1	
Sep.	15,589.1	439.3	46.0	1.4	29,574.2	27,630.8	1,731.7	48,560.3	
Oct.	12,256.0	608.0	11,470.7	298.5	39,359.6	9,514.6	596.9	13,301.3	
Nov.	3,223.2	91.5	2,514.5	71.5	40,068.3	5,885.1	362.4	8,758.8	

Note : Six months Government of Pakistan Treasury Bills restarted w. e. f. June 1998 and 3 & 12 months Government of Pakistan Treasury Bills restarted w.e.f July 1998.

6.1 Government of Pakistan's Treasury Bills

(Million Rupees)

PERIODS	6 months Government of Pakistan Treasury Bills		12 months Government of Pakistan Treasury Bills (Auctioned and Rollover)					Outstanding Balance
	Discount Paid	Outstanding Balance	Issue	Discount Allowed	Discharged	Discount Paid		
2005 Jun.	-	132,708.3	48,360.1	1,229.2	-	-	65,798.8	
Dec.	2,335.8	59,159.9	82,036.8	7,174.7	-	-	329,870.2	
2006 Jun.	71.1	7,934.1	28,686.2	2,513.8	48,360.1	4,039.9	422,647.0	
Dec.	26.2	43,288.7	47,687.7	4,282.3	82,150.5	7,184.7	344,177.0	
2007 Jun.	225.2	45,252.8	49,979.6	4,550.4	28,686.2	2,513.8	607,844.1	
Dec.	13.3	31,126.8	26,706.0	2,504.0	47,687.7	4,282.3	686,517.2	
2008 Jun.	793.6	43,546.7	9,559.4	1,094.0	49,979.6	4,550.4	402,783.9	
Dec.	192.4	9,916.8	-	-	26,706.0	2,503.9	136,100.5	
2009 Jun.	431.0	188,606.3	101,872.0	12,847.3	9,559.4	1,094.4	598,990.5	
2008 Nov.	171.2	7,188.5	1.2	0.2	38,813.0	3,636.1	162,806.6	
Dec.	192.4	9,916.8	-	-	26,706.0	2,503.9	136,100.5	
2009 Jan.	-	36,239.6	48,904.3	6,933.5	20,641.3	1,947.0	164,363.5	
Feb.	-	118,863.7	141,104.1	18,723.3	47,039.1	4,660.8	258,428.5	
Mar.	19.1	166,942.2	99,893.9	11,769.5	20,477.2	2,057.9	337,845.2	
Apr.	98.1	178,690.4	111,192.5	14,484.5	16,546.4	1,670.8	432,491.4	
May.	132.2	185,556.9	90,083.3	11,893.9	15,896.9	1,614.1	506,677.9	
Jun.	431.0	188,606.3	101,872.0	12,847.3	9,559.4	1,094.4	598,990.5	
Jul.	1,837.1	173,759.4	81,150.2	9,407.2	5,495.6	647.4	674,645.1	
Aug.	5,528.6	100,919.4	107,489.8	13,108.1	-	-	782,134.9	
Sep.	2,834.7	79,989.9	67,928.5	8,416.1	-	-	850,063.4	
Oct.	848.7	76,302.2	15,838.9	1,988.8	443.4	56.5	865,458.1	
Nov.	573.2	73,329.5	36,590.8	4,510.6	1.2	0.2	902,047.8	

Source: Domestic Markets & Monetary Management Department, SBP

6.2 Sale / Purchase of Treasury Bills under Open Market Operation by SBP with Banks

SALE

(Billion Rupees)

PERIODS	2005-06		2006-07		2007-08		2008-09		2009-10	
	Bid Amount		Bid Amount		Bid Amount		Bid Amount		Bid Amount	
	Offered	Accepted	Offered	Accepted	Offered	Accepted	Offered	Accepted	Offered	Accepted
July	56.5	46.8	159.3	133.5	187.8	141.8	508.0	367.9	201.5	153.6
August	86.0	65.2	131.9	105.7	272.9	228.3	71.1	41.2	-	-
September	83.9	69.7	107.0	87.0	81.1	71.3	15.7	9.5	-	-
October	14.0	9.0	92.9	81.3	-	-	44.8	36.0	-	-
November	32.0	26.5	71.5	61.9	163.8	124.7	413.5	223.7	10.5	8.0
December	159.2	95.9	124.7	117.2	86.8	69.0	184.3	124.6		
January	82.5	67.1	69.6	60.2	74.7	52.3	280.5	178.9		
February	80.5	64.7	23.9	11.7	95.4	70.9	238.6	142.1		
March	44.5	41.1	50.2	42.1	113.2	77.7	89.1	71.3		
April	-	-	119.0	88.8	160.2	129.9	37.8	24.3		
May	6.6	4.0	27.0	11.4	126.4	80.6	18.5	15.8		
June	235.4	153.8	161.8	135.3	290.6	200.4	187.5	114.9		
Average										
per month	73.4	53.7	94.9	78.0	137.7	103.9	174.1	112.5	42.4	32.3
per day	2.5	1.8	3.2	2.6	4.6	3.5	5.8	3.8	1.4	1.1

PURCHASE

PERIODS	2005-06		2006-07		2007-08		2008-09		2009-10	
	Amount		Amount		Amount		Amount		Amount	
	Offered	Injected	Offered	Injected	Offered	Injected	Offered	Injected	Offered	Injected
July	-	-	-	-	-	-	-	-	102.6	50.0
August	11.2	8.3	27.2	21.2	-	-	117.0	78.2	406.5	250.9
September	-	-	-	-	-	-	259.2	176.4	276.3	206.0
October	66.9	38.5	-	-	40.9	40.9	214.8	187.3	671.9	546.7
November	123.6	74.1	-	-	-	-	39.9	39.4	468.8	415.2
December	-	-	31.3	25.8	-	-	15.9	11.2		
January	139.6	111.5	-	-	41.6	27.5	-	-		
February	60.6	42.8	-	-	-	-	-	-		
March	12.7	10.7	51.1	25.0	102.7	82.1	85.1	60.0		
April	210.5	96.9	-	-	50.1	40.1	378.4	176.8		
May	91.4	46.7	-	-	63.6	41.8	342.5	237.7		
June	-	-	-	-	-	-	186.3	165.0		
Average										
per month	59.7	35.8	9.1	6.0	24.9	19.4	136.6	9.4	385.2	293.8
per day	2.0	1.2	0.3	0.2	0.8	0.7	4.6	0.3	12.8	9.8

Source: Domestic Markets & Monetary Management Department, SBP

6.3 SBP 3-Day Repo Facility MTBs / FIBs / PIBs (Outstanding)

Cash Accommodation

(Million Rupees)

PERIODS	2004-05	2005-06	2006-07	2007-08	2008-09	2009-10
July	700	23,861	38,883	111,817	24,227	24,895
August	10,600	48,241	19,032	68,490	42,861	15,880
September	84,760	45,245	66,715	121,825	254,378	113,800
October	63,324	116,512	27,670	575,455	55,638	9,600
November	14,098	91,780	77,702	126,045	149,228	80,200
December	-	4,520	35,573	427,940	105,625	
January	115,134	29,760	7,718	129,107	66,000	
February	-	12,032	34,435	80,755	6,150	
March	21,695	47,815	75,895	89,772	69,930	
April	800	243,238	51,327	51,609	71,257	
May	70,787	55,246	174,980	93,458	2,200	
June	139,550	44,019	76,830	96,792	27,050	
Average						
per month	43,454	63,522	57,230	164,422	72,879	48,875
per day	1,448	2,117	1,908	5,481	2,429	1,629

SBP 3-Day Repo Rates

(Percent per annum)

PERIODS	2004-05	2005-06	2006-07	2007-08	2008-09	2009-10
July	7.50	9.00	9.50	9.50	13.00	14.00
August	7.50	9.00	9.50	10.00	13.00	13.00
September	7.50	9.00	9.50	10.00	13.00	13.00
October	7.50	9.00	9.50	10.00	13.00	13.00
November	7.50	9.00	9.50	10.00	15.00	12.50
December	7.50	9.00	9.50	10.00	15.00	
January	7.50	9.00	9.50	10.00	15.00	
February	7.50	9.00	9.50	10.50	15.00	
March	7.50	9.00	9.50	10.50	15.00	
April	9.00	9.00	9.50	10.50	14.00	
May	9.00	9.00	9.50	12.00	14.00	
June	9.00	9.00	9.50	12.00	14.00	

Note: Rates applicable against T-bills & FIBs, PIBs

Source: Domestic Markets & Monetary Management Department, SBP

6.4 Auction of Government of Pakistan's Market Treasury Bills (Auction Wise)

(Million Rupees)

AUCTION SETTLEMENT DATE	3 Months Treasury Bills				6 Months Treasury Bills	
	Amount Offered	Amount Accepted	Cutt-off Yield (%)	Weighted Average (%)	Amount Offered	Amount Accepted
2008-09						
09-10-08	71,755	52,605	12.5518	12.5518	100	Rejected
23-10-08	66,500	61,600	12.5631	12.5625	600	500
06-11-08	53,571	53,071	13.5313	12.9066	1,700	Rejected
20-11-08	123,667	104,800	13.8549	13.6934	2,500	2,000
04-12-08	153,351	82,550	13.8549	13.8437	4,075	Rejected
18-12-08	87,300	68,450	13.8549	13.8397	6,500	-
02-01-09	77,908	65,908	13.9750	13.8472	1,860	1,360
15-01-09	138,025	45,850	13.8549	13.8545	14,600	10,100
29-01-09	76,385	45,484	13.7624	13.7338	17,200	16,700
12-02-09	57,550	52,350	13.6237	13.4553	62,800	55,450
26-02-09	36,350	6,033	12.6091	12.5629	84,850	32,500
12-03-09	45,200	35,400	11.6908	11.4779	48,855	31,172
26-03-09	16,463	10,463	11.7367	11.6498	25,523	20,223
09-04-09	3,820	3,520	12.6552	12.5336	13,350	11,750
23-04-09	1,600	1,100	12.9775	12.8896	5,200	2,400
07-05-09	5,835	2,600	12.9775	12.9678	5,907	5,307
21-05-09	2,800	Rejected	Rejected	Rejected	5,650	4,025
04-06-09	1,100	Rejected	Rejected	Rejected	10,364	4,564
18-06-09	2,550	Rejected	Rejected	Rejected	15,312	5,231
2009-10						
16-07-09	24,350	10,450	11.4161	11.3064	29,127	12,127
30-07-09	1,975	Rejected	Rejected	Rejected	16,025	Rejected
13-08-09	9,600	Rejected	Rejected	Rejected	13,750	Rejected
27-08-09	2,550	2,550	12.3792	12.3603	10,200	5,231
10-09-09	5,435	5,360	12.5171	12.4347	27,305	27,305
26-09-09	15,245	10,620	12.4929	12.4423	61,673	2,058
08-10-09	34,198	8,310	12.4252	12.4158	18,200	4,425
22-10-09	19,238	12,063	12.4712	12.4385	12,560	3,250
05-11-09	9,395	1,245	12.4252	12.4252	10,463	763
19-11-09	4,130	2,030	12.3792	12.2873	30,085	5,485

6.4 Auction of Government of Pakistan.s Market Treasury Bills (Auction Wise)

(Million Rupees)

AUCTION SETTLEMENT DATE	6 Months Treasury Bills		12 Months Treasury Bills				
	Cutt-off Yield (%)	Weighted Average (%)	Amount Offered	Amount Accepted	Cutt-off Yield (%)	Weighted Average (%)	
2008-09							
09-10-08	Rejected	Rejected	-	-	-	-	-
23-10-08	12.6649	12.6649	500	500	12.7873	12.7873	12.7873
06-11-08	Rejected	Rejected	1,500	Rejected	Rejected	Rejected	Rejected
20-11-08	14.0108	14.0108	3,000	Rejected	Rejected	Rejected	12.7873
04-12-08	14.0100	14.0108	1,000	Rejected	Rejected	Rejected	Rejected
18-12-08	14.0108	14.0108	-	Rejected	-	-	-
02-01-09	13.9959	13.9959	3,000	3,000	14.2595	14.2529	14.2529
15-01-09	14.0108	14.0093	37,357	29,107	14.2857	14.2609	14.2609
29-01-09	14.0108	13.9958	105,435	22,600	14.2072	14.1589	14.1589
12-02-09	13.8731	13.7357	256,900	59,800	13.9074	13.8408	13.8408
26-02-09	12.9828	12.9600	241,023	100,000	13.0044	12.9881	12.9881
12-03-09	11.7845	11.6684	174,404	53,685	11.8518	11.7781	11.7781
26-03-09	11.8970	11.7665	87,510	58,260	11.9522	11.8475	11.8475
09-04-09	12.9828	12.7641	63,030	54,930	13.4928	12.9687	12.9687
23-04-09	13.0737	12.9524	125,570	69,445	13.2738	13.1351	13.1351
07-05-09	13.1876	13.1105	128,030	72,745	13.2995	13.2294	13.2294
21-05-09	13.1876	13.1423	71,372	55,799	13.2995	13.2648	13.2648
04-06-09	13.1420	13.1395	137,704	55,799	13.2481	13.2297	13.2297
18-06-09	12.4385	12.0059	113,934	58,318	12.2418	12.0882	12.0882
2009-10							
16-07-09	11.5151	11.3847	113,260	40,885	11.5392	11.4703	11.4703
30-07-09	Rejected	Rejected	99,305	49,455	11.8769	11.7514	11.7514
13-08-09	Rejected	Rejected	144,300	89,600	12.2292	12.1620	12.1620
27-08-09	12.5517	12.4425	70,700	30,950	12.4442	12.4204	12.4204
10-09-09	12.7783	12.5785	69,725	23,332	12.4822	12.4628	12.4628
26-09-09	12.5996	12.5816	61,329	52,984	12.5384	12.4751	12.4751
08-10-09	12.5970	12.5738	24,225	10,225	12.6091	12.5804	12.5804
22-10-09	12.5970	12.5942	30,600	6,725	12.6091	12.6091	12.6091
05-11-09	12.5517	12.5517	73,365	21,215	12.5202	12.5202	12.5202
19-11-09	12.3255	12.3222	58,210	19,885	21.2166	12.1916	12.1916

Source: Domestic Markets & Monetary Management Department, SBP

6.5 Auction of Pakistan Investment Bonds (PIBs)

(Million Rupees)

AUCTION SETTLEMENT DATE	Tenure	Coupon Rate (%)	Amount Offered	Amount Accepted	Price Accepted = Rs.100	Cut-off Yield Accepted (%)	Weighted Average Yield Accepted (%)
2008-09							
16-04-09	3-Years	11.25	5,746.00	3,071.50	96.61	12.9385	12.7670
	5-Years	11.50	6,579.00	2,830.00	95.24	12.9495	12.8620
	7-Years	11.75	4,975.00	2,592.00	94.09	13.1395	13.0505
	10-Years	12.00	27,425.00	14,156.00	93.41	13.2409	13.0672
	15-Years	12.50	1,800.00	63.40	91.92	13.8007	13.8007
	20-Years	13.00	1,300.00	200.00	91.80	14.2492	14.2492
	30-Years	13.75	1,500.00	100.00	94.87	14.4995	14.4995
28-05-09	3-Years	11.25	3,825.00	2,866.50	97.56	12.5018	12.3066
	5-Years	11.50	5,795.00	2,988.00	97.00	12.4151	12.3721
	7-Years	11.75	3,000.00	1,800.00	96.43	12.5807	12.5159
	10-Years	12.00	32,180.00	12,365.50	96.57	12.6303	12.5714
	15-Years	12.50	1,500.00	103.00	94.35	13.3900	13.3900
	20-Years	13.00	200.00	200.00	94.59	13.8004	13.8004
	30-Years	13.75	2,000.00	2,000.00	96.16	14.3003	14.3003
03-09-09	3-Years	11.25	1,895.00	625.00	97.44	12.2961	12.2688
	5-Years	11.50	1,975.00	625.00	96.83	12.3689	12.3374
	7-Years	11.75	1,325.00	825.00	95.75	12.4593	12.4159
	10-Years	12.00	17,165.00	12,590.00	97.19	12.5000	12.4300
	15-Years	12.50	1,430.00	229.00	97.25	12.9295	12.9223
	20-Years	13.00	1,000.00	500.00	97.94	13.2993	13.2993
	30-Years	13.75	1,000.00	500.00	100.00	13.7493	13.7493
12-11-09	3-Years	11.25	5,500.00	2,654.00	97.63	12.2606	12.2098
	5-Years	11.50	4,050.00	2,484.20	96.77	12.4005	12.2950
	7-Years	11.75	2,300.00	650.00	96.90	12.4289	12.4289
	10-Years	12.00	20,725.00	9,455.30	97.50	12.4406	12.4261
	15-Years	12.50	1,290.00	735.00	97.64	12.8624	12.8478
	20-Years	13.00	1,000.00	500.00	98.50	13.2106	13.2106
	30-Years	13.75	1,000.00	750.00	100.00	13.7423	13.7116

Source: Domestic Markets & Monetary Management Department, SBP

6.6 Monthly KIBOR

(Percent per annum)

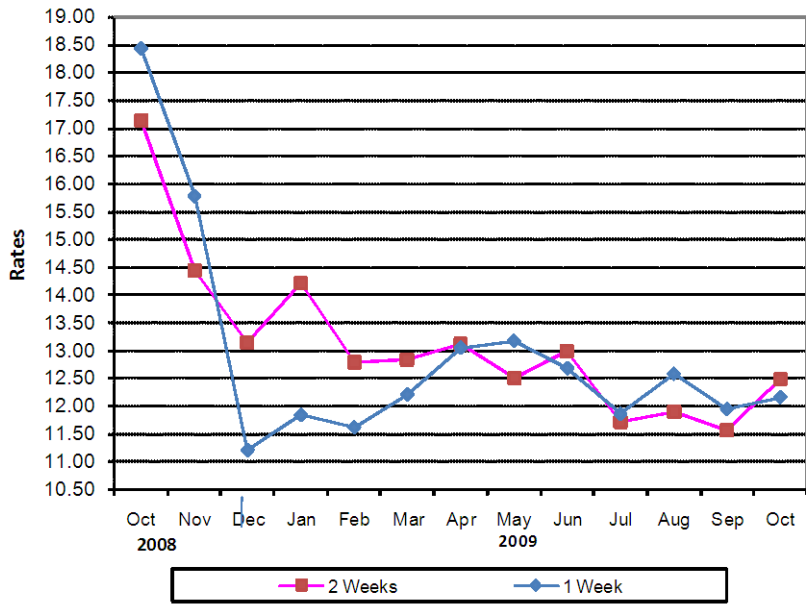
PERIODS			1 Week		2 Weeks		1Month		3 Months		6 Months		9 Months		12 Months	
			Bid	Offer	Bid	Offer	Bid	Offer	Bid	Offer	Bid	Offer	Bid	Offer	Bid	Offer
2008	Nov.	Month Average	10.80	11.48	11.76	12.27	13.78	14.28	15.00	15.35	15.26	15.60	15.34	15.84	15.44	15.94
		End-Month	10.60	11.10	11.26	11.76	13.58	14.08	15.22	15.47	15.42	15.67	15.48	15.98	15.56	16.06
	Dec.	Month Average	9.77	10.27	11.29	11.79	13.78	14.28	15.23	15.48	15.42	15.67	15.50	16.00	15.57	16.07
		End-Month	14.27	14.77	14.02	14.52	14.17	14.67	15.27	15.52	15.45	15.70	15.52	16.02	15.61	16.11
2009	Jan.	Month Average	10.51	11.01	11.32	11.82	12.86	13.36	14.71	14.96	15.21	15.46	15.41	15.91	15.52	16.02
		End-Month	10.01	10.51	10.79	11.29	12.30	12.80	14.16	14.41	14.85	15.10	15.28	15.78	15.44	15.94
	Feb.	Month Average	10.74	11.24	11.31	11.81	11.98	12.48	13.50	13.75	13.95	14.20	14.68	15.18	14.98	15.48
		End-Month	10.34	10.84	10.47	10.97	10.87	11.37	12.14	12.39	12.76	13.01	13.46	13.96	13.93	14.43
	Mar.	Month Average	11.56	12.06	11.52	12.02	11.58	12.08	11.91	12.16	12.29	12.54	13.06	13.56	13.50	14.00
		End-Month	13.46	13.96	12.95	13.45	12.62	13.12	12.52	12.77	12.60	12.85	13.00	13.50	13.41	13.91
	Apr.	Month Average	12.80	13.30	12.81	13.31	12.82	13.32	12.90	13.15	13.02	13.27	13.25	13.75	13.50	14.00
		End-Month	12.96	13.46	12.87	13.37	12.87	13.37	12.99	13.24	13.10	13.35	13.24	13.74	13.45	13.95
	May	Month Average	12.79	13.29	12.88	13.38	12.97	13.47	13.23	13.48	13.29	13.54	13.36	13.86	13.50	14.00
		End-Month	12.83	13.33	12.89	13.39	13.02	13.52	13.47	13.72	13.50	13.75	13.53	14.03	13.59	14.09
	Jun.	Month Average	12.29	12.79	12.55	13.05	12.85	13.35	12.90	13.15	12.93	13.18	13.09	13.59	13.24	13.74
		End-Month	12.99	13.49	12.83	13.33	12.76	13.26	12.52	12.77	12.51	12.76	12.69	13.19	12.81	13.31
	Jul.	Month Average	11.47	11.97	11.51	12.01	11.50	12.00	11.63	11.88	11.80	12.05	12.04	12.54	12.30	12.80
		End-Month	12.10	12.60	12.00	12.50	11.75	12.25	11.68	11.93	11.74	11.99	11.90	12.40	12.20	12.70
	Aug.	Month Average	12.11	12.61	12.06	12.56	12.01	12.51	12.01	12.25	12.02	12.27	12.06	12.56	12.25	12.75
		End-Month	12.16	12.66	12.13	12.63	12.16	12.66	12.29	12.54	12.31	12.56	12.29	12.79	12.34	12.84
	Sep.	Month Average	12.12	12.62	12.18	12.68	12.23	12.73	12.33	12.58	12.37	12.62	12.36	12.86	12.39	12.89
		End-Month	12.36	12.86	12.30	12.80	12.29	12.79	12.35	12.60	12.40	12.65	12.40	12.90	12.43	12.93
	Oct.	Month Average	12.25	12.75	12.26	12.76	12.30	12.80	12.39	12.64	12.43	12.68	12.43	12.93	12.47	12.97
		End-Month	12.10	12.60	12.20	12.70	12.30	12.80	12.56	12.81	12.59	12.84	12.56	13.06	12.60	13.10
	Nov.	Month Average	12.13	12.63	12.18	12.68	12.25	12.75	12.44	12.69	12.47	12.72	12.48	12.98	12.54	13.04
		End-Month	11.77	12.27	11.80	12.30	11.87	12.37	12.08	12.33	12.16	12.41	12.22	12.72	12.30	12.80

KIBOR :Karachi Interbank Offered Rate

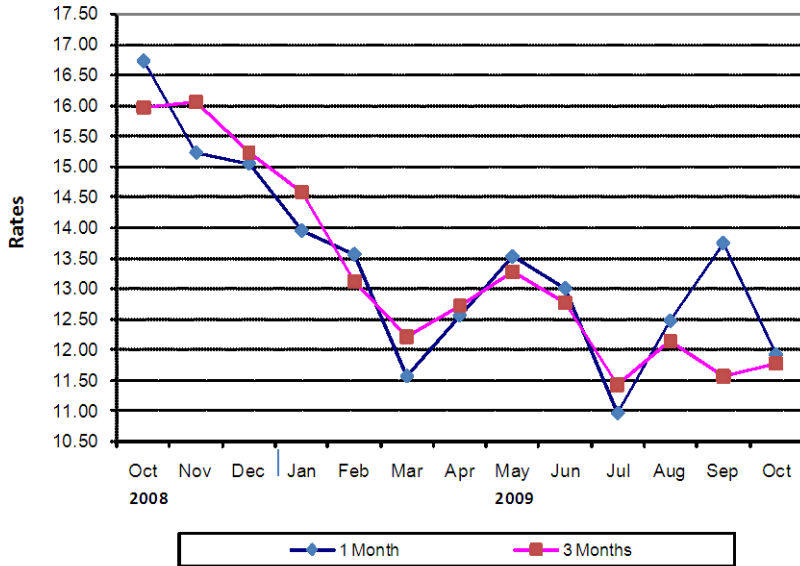
Source: Domestic Markets & Monetary Management Department, SBP

Inter- Bank Average Call Rates

Weekly



Monthly



6.7 Indicative Inter-Bank Average Call Rates

(% Per Annum)

PERIODS	Overnight	1 Week	2 Weeks	1 Month	3 Months	6 Months	1 Year
2008 Oct.	20.03	18.42	17.14	16.73	15.96	-	-
Nov.	13.61	15.77	14.46	15.23	16.06	-	-
Dec.	10.98	11.21	13.16	15.05	15.23	-	-
2009 Jan.	12.05	11.84	14.21	13.96	14.58	14.65	-
Feb.	11.45	11.62	12.80	13.57	13.11	14.03	-
Mar.	12.84	12.21	12.86	11.58	12.22	12.29	-
Apr.	12.65	13.05	13.13	12.57	12.73	13.07	-
May	12.35	13.17	12.52	13.53	13.28	13.36	-
Jun.	11.35	12.68	13.01	13.01	12.77	13.20	-
Jul.	11.59	11.86	11.73	10.97	11.43	12.25	-
Aug.	12.19	12.58	11.91	12.48	12.15	11.43	-
Sep.	11.75	11.95	11.58	13.75	11.56	11.56	-
Oct.	12.02	12.16	12.50	11.93	12.58	11.77	-

Source: Domestic Markets & Monetary Management Department, SBP

6.8 SBP Rates for Market to Market (M2M) of Major Currencies

MONTH	US Dollar			Euro			Japanese Yen			Pound Sterling		
	Ready	1Week	1 Month	Ready	1Week	1 Month	Ready	1Week	1 Month	Ready	1Week	1 Month
02-Nov-09	83.7051	83.8740	84.3733	123.6450	123.8929	124.6278	0.9279	0.9298	0.9355	137.3098	137.5792	138.3807
03-Nov-09	83.7483	83.9022	84.4142	122.8128	123.0367	123.7781	0.9302	0.9319	0.9377	136.5517	136.7955	137.6111
04-Nov-09	83.7105	83.8944	84.3938	123.5191	123.7890	124.5180	0.9209	0.9229	0.9285	138.3694	138.6663	139.4730
05-Nov-09	83.6857	83.8083	84.3432	124.2063	124.3865	125.1709	0.9280	0.9294	0.9355	138.3659	138.5615	139.4280
06-Nov-09	83.5680	83.7027	84.1925	124.4912	124.6897	125.4104	0.9234	0.9249	0.9304	138.8440	139.0604	139.8514
07-Nov-09	83.5633	83.7054	84.1864	124.0664	124.2754	124.9804	0.9288	0.9304	0.9359	138.8571	139.0855	139.8624
10-Nov-09	83.3728	83.5408	84.0272	125.0342	125.2842	126.0030	0.9274	0.9293	0.9349	139.0867	139.3594	140.1448
11-Nov-09	83.4962	83.6606	84.1956	125.5157	125.7610	126.5550	0.9285	0.9304	0.9364	139.9856	140.2537	141.1253
12-Nov-09	83.4643	83.6248	84.1677	124.7792	125.0173	125.8187	0.9298	0.9316	0.9377	138.3714	138.6296	139.5063
13-Nov-09	83.4292	83.6056	84.1380	124.2845	124.5456	125.3272	0.9276	0.9296	0.9356	139.0807	139.3677	140.2318
14-Nov-09	83.4707	83.6403	84.1622	124.5132	124.7643	125.5311	0.9306	0.9325	0.9384	139.3042	139.5800	140.4260
16-Nov-09	83.4661	83.6484	84.1856	124.9654	125.2365	126.0285	0.9329	0.9350	0.9411	139.3132	139.6100	140.4828
17-Nov-09	83.4881	83.6690	84.2078	124.7896	125.0575	125.8497	0.9379	0.9399	0.9461	140.7442	141.0408	141.9240
18-Nov-09	83.4920	83.6725	84.2099	124.7872	125.0547	125.8441	0.9372	0.9393	0.9454	140.5296	140.8260	141.7067
19-Nov-09	83.5306	83.6887	84.2920	124.1975	124.4265	125.3113	0.9389	0.9407	0.9476	139.4293	139.6864	140.6714
20-Nov-09	83.5080	83.6328	84.2532	124.1638	124.3467	125.2529	0.9399	0.9413	0.9484	138.1765	138.3767	139.3803
21-Nov-09	83.5603	83.7314	84.2842	124.1998	124.4516	125.2554	0.9392	0.9412	0.9475	137.9121	138.1873	139.0764
23-Nov-09	83.5226	83.7159	84.2457	125.0793	125.3663	126.1400	0.9388	0.9410	0.9471	138.5890	138.9030	139.7530
24-Nov-09	83.5368	83.7043	84.2549	124.7790	125.0267	125.8328	0.9424	0.9443	0.9506	138.0405	138.3102	139.1940
25-Nov-09	83.5422	83.7077	84.3914	125.5305	125.7769	126.7887	0.9511	0.9530	0.9609	139.6157	139.8855	141.0013
26-Nov-09	83.5683	83.7387	84.3692	125.9625	126.2174	127.1533	0.9617	0.9637	0.9710	138.1384	138.4131	139.4311

6.8 SBP Rates for Market to Market (M2M) of Major Currencies

MONTH	Swiss Frank			Australian Dollar			Saudi Arabian Riyal			Kuwaiti Dinnar		
	Ready	1Week	1 Month	Ready	1Week	1 Month	Ready	1Week	1 Month	Ready	1Week	1 Month
02-Nov-09	81.9313	82.1006	82.6009	75.7615	75.8584	76.1527	22.3202	22.3657	22.5023	292.4103	292.9624	294.5996
03-Nov-09	81.2223	81.3751	81.8839	74.8417	74.9322	75.2147	22.3326	22.3742	22.5146	292.7250	293.2260	294.9172
04-Nov-09	81.7246	81.9079	82.4080	75.9799	76.0987	76.3813	22.3222	22.3718	22.5071	292.4796	293.0851	294.7020
05-Nov-09	82.2262	82.3503	82.8885	75.9490	76.0112	76.3303	22.3156	22.3484	22.4953	292.3519	292.7546	294.5254
06-Nov-09	82.3330	82.4694	82.9649	76.6694	76.7438	77.0246	22.2842	22.3203	22.4551	292.2471	292.6923	294.3075
07-Nov-09	82.1382	82.2820	82.7681	76.7361	76.8171	77.0895	22.2823	22.3208	22.4512	291.9148	292.3840	293.9058
10-Nov-09	82.7522	82.9224	83.4178	77.3992	77.5062	77.7715	22.2304	22.2747	22.4085	292.4849	293.0268	294.5843
11-Nov-09	83.1056	83.2725	83.8168	77.8602	77.9642	78.2817	22.2651	22.3091	22.4558	292.9692	293.5203	295.1644
12-Nov-09	82.5562	82.7183	83.2659	77.7596	77.8597	78.1910	22.2560	22.2983	22.4471	292.5495	293.0593	294.7824
13-Nov-09	82.2449	82.4221	82.9579	77.4765	77.5911	77.9118	22.2460	22.2932	22.4374	292.1705	292.7215	294.4153
14-Nov-09	82.5013	82.6726	83.1989	77.8781	77.9870	78.2986	22.2565	22.3018	22.4427	292.3055	292.8316	294.4793
16-Nov-09	82.7872	82.9710	83.5141	77.9281	78.0490	78.3757	22.2564	22.3046	22.4507	292.7761	293.3592	295.1239
17-Nov-09	82.6124	82.7950	83.3389	77.5729	77.6845	78.0026	22.2620	22.3103	22.4557	292.7764	293.3581	295.1346
18-Nov-09	82.5918	82.7736	83.3159	77.8814	77.9990	78.3163	22.2631	22.3113	22.4557	292.6464	293.2266	294.9971
19-Nov-09	82.0577	82.2166	82.8206	76.8732	76.9676	77.3483	22.2736	22.3153	22.4785	292.8843	293.3871	295.3985
20-Nov-09	82.0798	82.2058	82.8259	76.2971	76.3606	76.7541	22.2682	22.3015	22.4681	292.8050	293.1914	295.2626
21-Nov-09	82.1191	82.2908	82.8456	76.4368	76.5418	76.8695	22.2822	22.3277	22.4764	292.9833	293.5317	295.3661
23-Nov-09	82.7776	82.9725	83.5102	77.0454	77.1726	77.4553	22.2715	22.3226	22.4661	292.7025	293.3284	295.0605
24-Nov-09	82.5463	82.7146	83.2685	76.6743	76.7752	77.0907	22.2753	22.3195	22.4692	292.8448	293.3790	295.1443
25-Nov-09	83.2011	83.3693	84.0602	77.4979	77.5996	78.0401	22.2767	22.3204	22.5056	292.9250	293.4385	295.7054
26-Nov-09	83.4473	83.6203	84.2614	76.7324	76.8369	77.2324	22.2822	22.3279	22.4991	293.1710	293.7169	295.7729

PDs:Primary Dealers

Source: Domestic Markets & Monetary Management Department, SBP

6.9 Secondary Market Transactions in Government Securities

(Billion Rupees)

SECURITIES/TRANSACTIONS	2008			2009									
	Oct.	Nov.	Dec.	Jan.	Feb.	Mar.	Apr.	May	Jun	Jul.	Aug	Sep.	Oct.
PIBs													
Purchases	106.9	137.9	83.8	39.2	44.8	30.3	83.7	80.2	59.0	43.1	62.0	37.7	34.6
Non Banks													
Repo	1.3	0.2	8.0	1.7	0.3	1.5	2.7	5.4	1.2	1.1	5.4	3.3	6.4
Outright	1.1	0.2	2.2	0.3	7.4	2.0	6.9	5.9	1.4	3.2	1.5	6.9	1.1
Banks/PDs													
Repo	47.6	54.7	40.7	26.0	22.3	14.5	20.5	8.2	25.9	23.0	16.1	12.7	14.7
Outright	2.2	1.0	4.7	0.3	14.8	6.2	21.1	12.4	6.3	12.2	8.8	13.5	7.2
SBP													
Repo	54.7	81.8	28.2	10.9	-	6.0	32.5	48.3	24.2	3.6	30.2	1.2	5.3
Outright	-	-	-	-	-	-	-	-	-	-	-	-	-
Sales	106.9	137.9	83.8	39.2	44.8	30.3	83.7	80.2	59.0	43.1	62.0	37.7	34.6
Non Banks													
Repo	11.4	7.2	7.3	3.4	4.0	2.1	2.5	0.5	4.6	3.9	0.9	1.8	1.3
Outright	-	0.5	2.0	0.1	2.7	1.4	1.0	1.3	1.0	0.5	0.3	0.7	0.2
Banks/PDs													
Repo	92.2	129.5	69.6	35.3	18.6	19.9	53.2	61.4	46.7	23.8	50.7	15.4	25.0
Outright	3.3	0.7	4.9	0.6	19.5	6.8	27.0	16.9	6.7	14.9	10.0	19.8	8.1
SBP													
Repo	-	-	-	-	-	-	-	-	-	-	-	-	-
Outright	-	-	-	-	-	-	-	-	-	-	-	-	-
Net Position	-	-	-	-	-	-	-	-	-	-	-	-	-
Treasury Bills													
Purchases	1,127.6	1,259.8	977.3	1,181.8	1,205.1	1,293.0	1,446.9	1,289.5	1,291.5	1,324.5	1,477.2	1,361.6	1,583.3
Non Banks													
Repo	2.5	8.7	2.6	14.3	6.4	17.5	23.1	28.4	12.5	44.6	84.7	46.8	88.4
Outright	1.8	20.3	21.1	29.6	11.3	28.4	40.5	26.4	27.5	21.4	20.3	32.6	40.8
Banks/PDs													
Repo	912.0	1,106.1	808.3	964.6	1,017.1	996.7	969.0	933.1	1,007. 3	1,069.3	992.6	893.8	908.8
Outright	54.4	70.9	107.8	145.8	164.1	126.5	121.8	107.9	103.4	122.9	126.4	84.7	41.6
SBP													
Repo	157.0	53.8	37.6	27.5	6.2	123.9	292.6	193.6	140.8	66.3	233.4	303.6	503.8
Sales	1,127.6	1,259.8	977.3	1,181.8	1,205.1	1,293.0	1,446.9	1,289.5	1,291.5	1,324.5	1,477.4	1,361.6	1,583.3
Non Banks													
Repo	49.6	31.2	51.8	72.0	78.7	72.4	95.4	44.7	75.9	45.0	24.9	51.6	50.1
Outright	0.0	0.0	1.2	6.2	1.8	4.3	2.3	4.3	2.9	7.9	9.5	3.4	6.8
Banks/PDs													
Repo	985.9	948.2	685.0	755.5	808.9	1,018.5	1,174.2	1,094.6	969.8	981.7	1,267.2	1,139.7	1,426.8
Outright	56.1	91.1	127.6	169.1	173.6	126.5	160.0	130.1	128.0	136.5	157.2	113.9	75.5
SBP													
Repo	36.0	189.2	111.6	178.9	142.1	71.3	15.0	15.8	114.9	153.6	18.7	53.0	24.1
Net Position	-	-	-	-	-	-	-	-	-	-	-	-	-