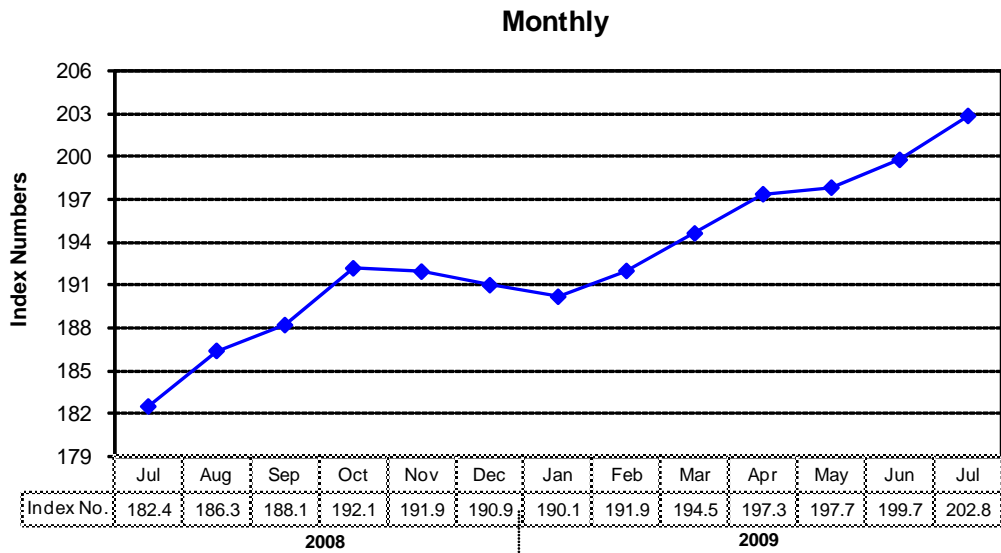
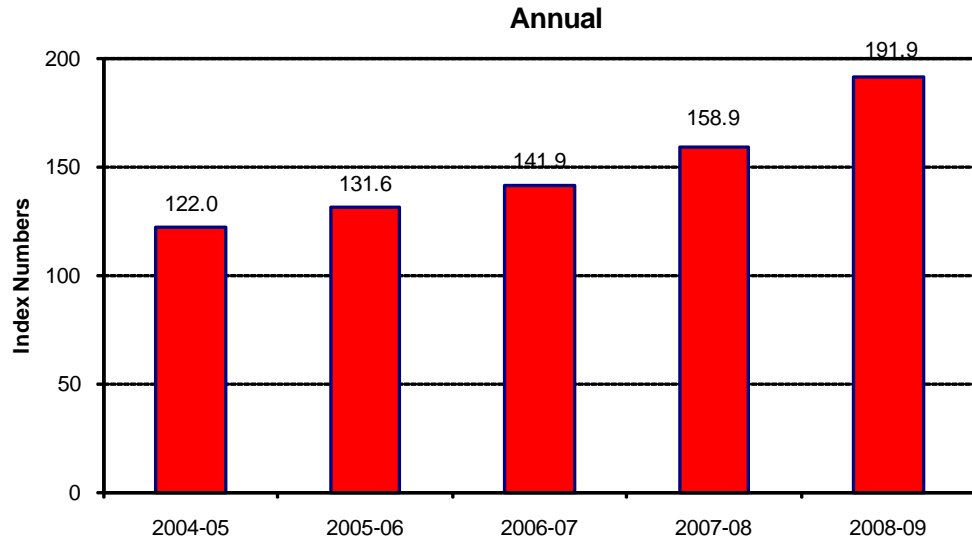


8.1 Combined Consumer Price Index Numbers by Commodity Groups - All Urban (2000-01=100)

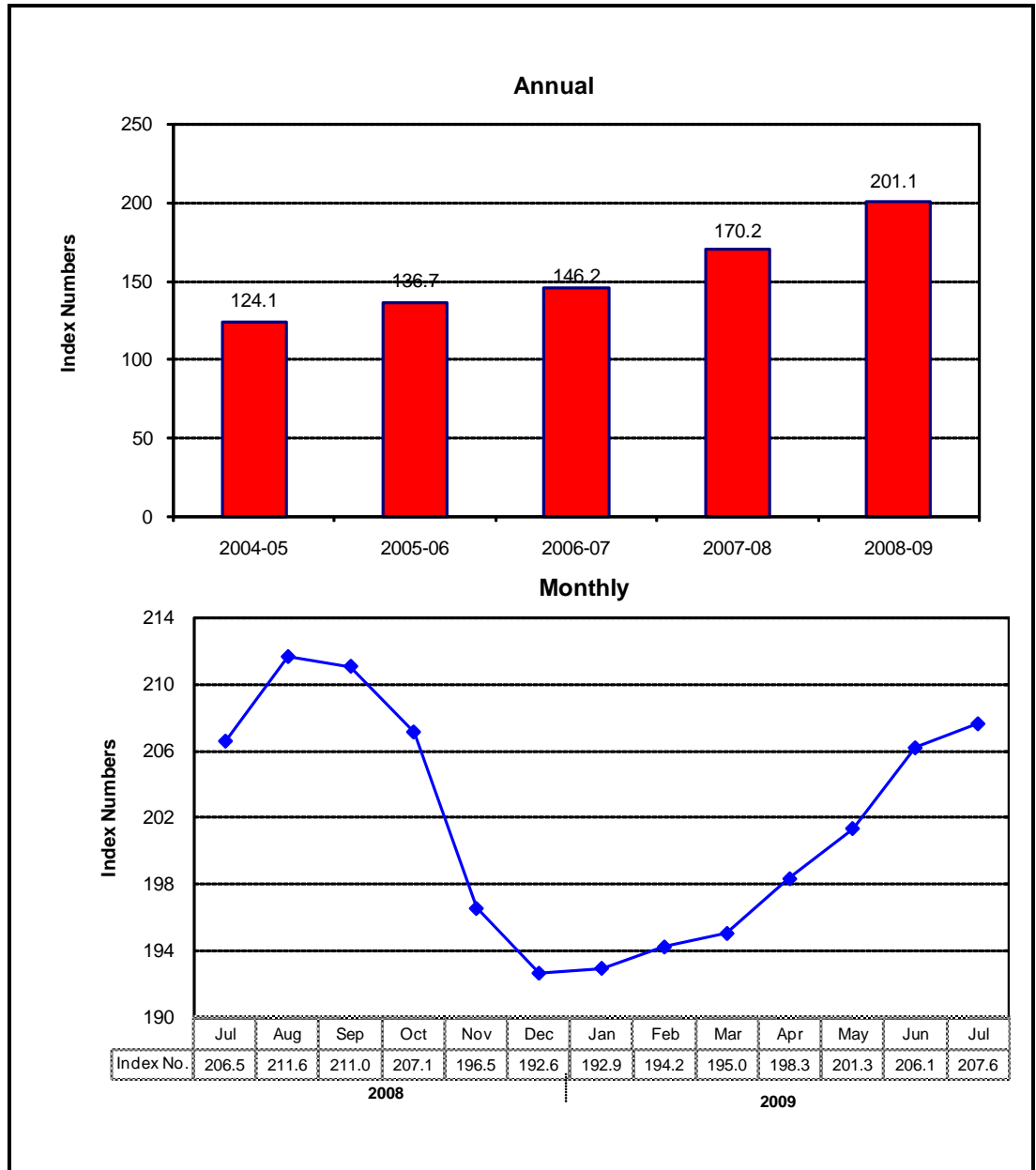
YEAR / MONTH	General	Food and Beverages	Apparel Textile and Footwear	House Rent	Fuel and Lighting	Household Furniture and Equipment	Transport and Communication	Recreation & Entertainment	Education	Cleaning, Laundry and Personal Appearance	Medicare
2004-05	121.98	125.69	112.98	120.42	125.77	117.34	125.11	105.93	117.55	115.90	107.94
2005-06	131.64	134.39	117.58	132.36	137.09	123.41	145.90	105.65	125.03	119.49	110.66
2006-07	141.87	148.21	123.70	141.21	149.43	131.64	148.96	105.76	133.82	124.53	120.91
2007-08	158.90	174.36	133.79	154.47	158.48	141.08	155.55	107.86	140.88	138.28	132.23
2008-09	191.90	215.69	152.82	1,784.53	198.92	159.58	192.55	120.00	165.27	163.17	147.25
2008											
Jul.	182.39	206.85	146.84	166.34	182.14	151.13	200.61	117.96	151.59	151.98	141.93
Aug.	186.29	212.21	148.78	169.02	183.62	153.45	205.95	118.27	159.46	154.34	142.06
Sep.	188.10	214.13	150.58	171.70	185.55	155.01	205.24	118.80	160.26	155.94	143.40
Oct.	192.08	221.44	151.62	174.44	185.90	156.97	204.43	119.17	160.80	159.76	145.96
Nov.	191.85	218.12	152.74	177.22	203.62	159.08	188.88	119.47	161.90	161.71	146.10
Dec.	190.90	214.71	153.35	179.99	202.54	159.97	185.00	119.61	163.18	162.03	146.53
2009											
Jan.	190.09	210.33	153.52	182.77	203.09	160.97	185.59	119.69	163.31	164.00	149.38
Feb.	191.90	211.58	153.92	185.20	208.21	162.17	186.04	121.25	164.68	167.37	149.97
Mar.	194.53	216.13	154.41	187.57	208.15	163.16	186.23	121.30	165.58	169.61	150.09
Apr.	197.28	220.46	155.53	189.92	208.09	163.68	186.43	121.37	175.79	169.58	150.28
May	197.74	220.04	156.09	192.23	207.85	164.49	185.24	121.53	178.21	170.35	150.63
Jun.	199.69	222.23	156.49	194.38	208.26	164.82	190.98	121.62	178.50	171.41	150.63
Jul.	202.77	228.93	156.96	196.70	206.77	164.83	189.66	121.62	178.57	171.56	150.64

Source : Federal Bureau of Statistics

Index Numbers of Consumer Prices (2000 - 01=100)



Index Numbers of Wholesale Prices (2000-01=100)



8.2 Index Numbers of Wholesale Prices by Commodity Groups (2000-01=100)

YEAR / MONTH		General	Food	Raw Materials	Fuel,Lighting and Lubricants	Manufactures	Building Materials
2004-05		124.14	125.03	110.44	138.01	113.05	143.79
2005-06		136.68	133.78	121.93	174.57	115.39	144.18
2006-07		146.18	145.67	138.85	184.10	119.91	151.93
2007-08		170.15	173.27	156.57	223.34	128.33	177.18
2008-09		201.10	213.54	184.45	258.96	140.67	213.00
2008	Jul.	206.53	206.37	179.02	303.30	139.37	227.27
	Aug.	211.60	211.91	189.96	306.21	144.00	229.47
	Sep.	211.02	213.62	186.88	299.99	145.12	226.25
	Oct.	207.08	219.58	176.03	271.12	145.01	226.74
	Nov.	196.50	215.97	173.65	232.07	140.24	224.81
	Dec.	192.62	210.77	169.18	231.18	137.80	213.13
2009	Jan.	192.91	208.80	180.44	235.66	137.00	203.89
	Feb.	194.19	210.31	185.92	233.61	138.38	209.20
	Mar.	195.00	212.16	185.99	234.15	138.81	205.10
	Apr.	198.28	215.69	191.49	240.74	139.80	201.40
	May	201.29	217.50	197.90	249.60	141.25	194.06
	Jun.	206.13	219.81	196.93	269.94	141.24	194.63
	Jul.	207.57	224.31	193.88	267.47	141.07	201.15

Source : Federal Bureau of Statistics

8.3 Combined Sensitive Price Indicator (SPI) by Income Groups (2000-01 =100)

YEAR / MONTH	INCOME GROUP				Combined
	Group-I	Group-II	Group-III	Group-IV	
	Up to Rs.3000	Rs.3001 to Rs.5000	Rs.5001 to Rs.12000	Above Rs.12000	
2004-05	127.59	127.50	127.01	127.35	126.52
2005-06	136.56	136.15	135.99	139.80	136.43
2006-07	151.34	150.44	149.97	152.32	149.29
2007-08	176.77	175.15	172.60	170.45	170.55
2008-09	218.16	216.02	213.77	208.87	209.29
2008 Jul.	211.22	208.41	204.97	202.67	202.94
Aug.	216.17	212.99	210.75	210.09	208.85
Sep.	217.27	213.96	211.75	210.65	209.52
Oct.	223.14	219.50	216.66	213.47	213.37
Nov.	220.13	217.61	215.14	210.49	211.03
Dec.	216.40	215.31	213.34	206.52	207.99
2009 Jan.	213.32	211.79	209.40	203.17	204.02
Feb.	215.13	213.85	212.36	206.69	206.78
Mar.	216.51	215.19	213.86	208.26	208.40
Apr.	220.14	218.67	216.73	210.05	210.85
May	222.94	221.20	218.79	211.21	212.62
Jun.	225.54	223.81	221.44	213.19	215.09
Jul.	231.80	230.03	227.71	220.42	222.00

Note: SPI figures revised as it is computed on 53 items instead of 51 items.

Source : Federal Bureau of Statistics

8.4 Bullion Prices

(Rupees per 10 Grams)

YEAR / MONTH		GOLD TEZABI		SILVER TEZABI	
		Karachi	Lahore	Karachi	Lahore
2004-05		8,216	8,238	118	138
2005-06		10,317	10,307	180	176
2006-07		12,619	12,603	228	231
2007-08		16,695	16,635	306	306
2008-09		22,195	22,176	329	330
2008	Jul.	21,413	21,304	388	385
	Aug.	20,502	20,499	367	368
	Sep.	20,304	20,280	358	351
	Oct.	22,034	21,832	331	322
	Nov.	20,043	19,956	293	303
	Dec.	20,540	20,819	282	286
2009	Jan.	21,681	21,752	297	298
	Feb.	23,844	23,779	323	320
	Mar.	24,047	24,054	321	338
	Apr.	23,441	23,415	316	318
	May	23,899	23,773	329	324
	Jun.	24,592	24,643	340	341
	Jul.	24,603	24,611	341	344

Figures are monthly / yearly averages

Source: Daily Business Recorder