

## 2.1 Depository Corporation's Survey

(Million Rupees)

I T E M S	2008						
	Jun.	Jul.	Aug.	Sep.	Oct.	Nov.	Dec.
<b>Net Foreign Assets</b>	<b>851,545</b>	<b>787,664</b>	<b>736,914</b>	<b>690,657</b>	<b>527,817</b>	<b>503,833</b>	<b>574,381</b>
Claims on nonresidents	1,185,633	1,137,365	1,099,589	1,067,008	900,151	1,105,676	1,192,643
less: Liabilities to nonresidents	334,088	349,701	362,674	376,351	372,334	601,843	618,262
<b>Domestic claims (a+b)</b>	<b>4,673,466</b>	<b>4,691,217</b>	<b>4,789,877</b>	<b>4,930,816</b>	<b>5,041,012</b>	<b>5,168,600</b>	<b>5,141,014</b>
<b>a-Net Claims on general government (1+2)</b>	<b>1,482,401</b>	<b>1,551,393</b>	<b>1,598,367</b>	<b>1,589,412</b>	<b>1,667,231</b>	<b>1,771,447</b>	<b>1,703,826</b>
<b>1- Net claims on central government</b>	<b>1,650,817</b>	<b>1,718,688</b>	<b>1,783,706</b>	<b>1,764,741</b>	<b>1,874,134</b>	<b>1,988,132</b>	<b>1,926,657</b>
Claims on central government	1,904,654	1,969,034	2,065,611	2,049,660	2,141,649	2,240,359	2,233,996
less: Liabilities to central government	253,837	250,346	281,905	284,920	267,515	252,226	307,339
<b>2-Net claims on provincial governments</b>	<b>-168,416</b>	<b>-167,296</b>	<b>-185,339</b>	<b>-175,329</b>	<b>-206,904</b>	<b>-216,685</b>	<b>-222,831</b>
Claims on provincial governments	70,844	66,544	59,600	55,294	50,623	45,263	43,651
less: Liabilities to provincial governments	239,260	233,840	244,939	230,623	257,527	261,948	266,482
<b>b-Claims on other sectors</b>	<b>3,191,065</b>	<b>3,139,824</b>	<b>3,191,510</b>	<b>3,341,404</b>	<b>3,373,781</b>	<b>3,397,153</b>	<b>3,437,189</b>
Other financial corporations	131,210	129,485	129,196	133,260	123,700	120,801	121,881
Public non financial corporations	198,574	188,997	211,115	250,282	260,374	259,895	270,343
Other non financial corporations	2,128,269	2,100,094	2,131,236	2,242,112	2,275,096	2,294,787	2,323,536
Other resident sectors	733,012	721,248	719,962	715,750	714,612	721,670	721,428
<b>Broad money liabilities (a+b+c+d)</b>	<b>4,531,412</b>	<b>4,425,919</b>	<b>4,435,076</b>	<b>4,514,608</b>	<b>4,454,950</b>	<b>4,523,450</b>	<b>4,632,293</b>
<b>a.Currency outside depository corporations</b>	<b>976,781</b>	<b>989,375</b>	<b>1,012,814</b>	<b>1,102,591</b>	<b>1,103,663</b>	<b>1,116,321</b>	<b>1,127,591</b>
<b>b. Transferable deposits</b>	<b>2,320,177</b>	<b>2,215,453</b>	<b>2,177,482</b>	<b>2,119,358</b>	<b>2,065,185</b>	<b>2,118,329</b>	<b>2,191,921</b>
Other financial corporations	43,881	49,173	36,965	30,933	33,426	34,324	42,612
Public non financial corporations	142,569	114,131	121,014	115,638	125,762	129,507	116,300
Other non financial corporations	855,774	816,647	787,980	744,914	704,912	730,314	777,731
Other resident sectors	1,277,953	1,235,502	1,231,523	1,227,873	1,201,085	1,224,185	1,255,279
less: Central bank float	0	0	0	0	0	0	0
<b>c. Other Deposits</b>	<b>1,232,568</b>	<b>1,219,160</b>	<b>1,242,799</b>	<b>1,290,729</b>	<b>1,284,228</b>	<b>1,286,553</b>	<b>1,310,964</b>
Other financial corporations	42,315	38,657	39,452	49,135	44,488	34,638	31,443
Public non financial corporations	170,149	154,334	153,059	149,587	148,049	138,999	150,903
Other non financial corporations	468,205	466,377	480,019	500,023	512,782	524,032	506,939
Other resident sectors	551,900	559,793	570,269	591,984	578,909	588,884	621,678
<b>d. Securities other than shares included in broad money</b>	<b>1,887</b>	<b>1,931</b>	<b>1,981</b>	<b>1,930</b>	<b>1,875</b>	<b>2,321</b>	<b>1,816</b>
Other financial corporations	185	185	185	185	185	150	150
Public non financial corporations	142	142	142	142	142	152	152
Other non financial corporations	1,555	1,600	1,650	1,599	1,544	2,015	1,510
Other resident sectors	3	3	3	3	3	3	3
<b>Deposits excluded from broad money</b>	<b>27,645</b>	<b>27,758</b>	<b>27,801</b>	<b>27,810</b>	<b>27,821</b>	<b>27,811</b>	<b>27,839</b>
of which: Other financial corporations	0	0	0	0	0	0	0
<b>Securities other than shares excluded from broad money</b>	<b>14,681</b>	<b>14,562</b>	<b>14,568</b>	<b>14,505</b>	<b>14,569</b>	<b>14,529</b>	<b>14,334</b>
of which: Other financial corporations	4,517	4,524	4,528	4,498	4,543	4,267	4,462
<b>Loans</b>	<b>13,137</b>	<b>15,004</b>	<b>14,566</b>	<b>14,212</b>	<b>13,143</b>	<b>12,679</b>	<b>12,548</b>
of which: Other financial corporations	3,782	5,649	5,213	4,861	3,630	3,328	2,568
<b>Financial Derivatives</b>	<b>3,053</b>	<b>2,101</b>	<b>2,101</b>	<b>2,591</b>	<b>2,581</b>	<b>2,571</b>	<b>2,561</b>
of which: Other financial corporations	942	0	0	0	0	0	0
<b>Trade credit &amp; advances</b>	<b>246</b>	<b>620</b>	<b>1,431</b>	<b>1,230</b>	<b>5,615</b>	<b>7,593</b>	<b>8,455</b>
of which: Other financial corporations	0	0	0	0	0	0	0
<b>Shares &amp; other equity</b>	<b>969,139</b>	<b>1,091,170</b>	<b>1,055,455</b>	<b>1,076,067</b>	<b>1,071,922</b>	<b>1,119,417</b>	<b>1,138,092</b>
<b>Other items (net)</b>	<b>-33,810</b>	<b>-97,014</b>	<b>-21,346</b>	<b>-27,091</b>	<b>-10,542</b>	<b>-20,506</b>	<b>-103,817</b>
Other liabilities (includes central bank float)	504,031	531,003	566,280	551,265	576,306	579,419	553,763
less: Other assets	523,660	602,751	549,954	583,562	612,119	572,016	623,756
plus: Consolidation adjustment	-14,181	-25,265	-37,672	5,206	25,270	-27,909	-33,824

## 2.1 Depository Corporation's Survey

(Million Rupees)

I T E M S	2009						
	Jan.	Feb.	Mar.	Apr.	May	Jun. <sup>P</sup>	Jul. <sup>P</sup>
<b>Net Foreign Assets</b>	<b>587,499</b>	<b>577,151</b>	<b>670,208</b>	<b>638,945</b>	<b>677,822</b>	<b>751,705</b>	<b>712,513</b>
Claims on nonresidents	1,228,107	1,219,855	1,280,907	1,319,124	1,376,023	1,464,310	1,443,797
less: Liabilities to nonresidents	640,609	642,703	610,698	680,180	698,201	712,605	731,284
<b>Domestic claims (a+b)</b>	<b>5,128,260</b>	<b>5,196,817</b>	<b>5,096,099</b>	<b>5,184,840</b>	<b>5,346,006</b>	<b>5,414,684</b>	<b>5,468,995</b>
<b>a-Net Claims on general government (1+2)</b>	<b>1,744,344</b>	<b>1,831,253</b>	<b>1,691,727</b>	<b>1,802,838</b>	<b>1,984,952</b>	<b>2,019,127</b>	<b>2,132,237</b>
<b>1- Net claims on central government</b>	<b>1,972,817</b>	<b>2,071,782</b>	<b>1,941,984</b>	<b>2,009,231</b>	<b>2,058,278</b>	<b>2,015,561</b>	<b>2,118,881</b>
Claims on central government	2,239,503	2,348,671	2,288,296	2,270,363	2,368,846	2,317,795	2,395,917
less: Liabilities to central government	266,686	276,889	346,312	261,132	310,568	302,234	277,037
<b>2-Net claims on provincial governments</b>	<b>-228,473</b>	<b>-240,529</b>	<b>-250,258</b>	<b>-206,393</b>	<b>-73,326</b>	<b>3,566</b>	<b>13,356</b>
Claims on provincial governments	46,934	41,247	36,931	74,710	196,494	290,903	293,996
less: Liabilities to provincial governments	275,407	281,776	287,189	281,103	269,820	287,337	280,640
<b>b-Claims on other sectors</b>	<b>3,383,917</b>	<b>3,365,564</b>	<b>3,404,372</b>	<b>3,382,002</b>	<b>3,361,055</b>	<b>3,395,558</b>	<b>3,336,759</b>
Other financial corporations	110,616	118,516	120,942	122,838	121,099	125,762	132,752
Public non financial corporations	264,086	272,564	344,057	344,559	348,143	364,916	359,271
Other non financial corporations	2,295,613	2,260,607	2,231,197	2,161,584	2,141,171	2,157,271	2,113,149
Other resident sectors	713,601	713,878	708,176	753,021	750,642	747,608	730,587
<b>Broad money liabilities (a+b+c+d)</b>	<b>4,580,550</b>	<b>4,620,724</b>	<b>4,637,350</b>	<b>4,665,961</b>	<b>4,839,413</b>	<b>4,964,306</b>	<b>4,927,386</b>
<b>a.Currency outside depository corporations</b>	<b>1,122,436</b>	<b>1,126,552</b>	<b>1,109,390</b>	<b>1,115,781</b>	<b>1,166,722</b>	<b>1,146,082</b>	<b>1,161,365</b>
<b>b.Transferable deposits</b>	<b>2,163,074</b>	<b>2,200,981</b>	<b>2,234,730</b>	<b>2,243,723</b>	<b>2,337,460</b>	<b>2,475,134</b>	<b>2,403,352</b>
Other financial corporations	47,578	44,259	38,664	32,956	34,552	47,268	52,687
Public non financial corporations	118,305	133,566	127,495	128,117	129,985	123,427	119,875
Other non financial corporations	758,677	770,760	788,219	773,142	822,717	870,903	798,770
Other resident sectors	1,238,514	1,252,396	1,280,352	1,309,508	1,350,207	1,433,537	1,432,020
less: Central bank float	0	0	0	0	0	1	0
<b>c.Other Deposits</b>	<b>1,293,330</b>	<b>1,292,710</b>	<b>1,292,867</b>	<b>1,306,118</b>	<b>1,334,908</b>	<b>1,342,782</b>	<b>1,362,362</b>
Other financial corporations	31,683	27,765	30,328	26,461	26,291	39,536	33,840
Public non financial corporations	142,198	144,574	151,354	157,907	167,535	170,864	174,528
Other non financial corporations	522,299	522,858	503,941	505,504	513,320	462,687	492,032
Other resident sectors	597,150	597,513	607,245	616,245	627,762	669,696	661,962
<b>d.Securities other than shares included in broad money</b>	<b>1,710</b>	<b>481</b>	<b>363</b>	<b>338</b>	<b>324</b>	<b>308</b>	<b>307</b>
Other financial corporations	150	0	0	0	0	0	0
Public non financial corporations	152	0	0	0	0	0	0
Other non financial corporations	1,404	481	363	338	324	308	307
Other resident sectors	3	0	0	0	0	0	0
<b>Deposits excluded from broad money</b>	<b>27,837</b>	<b>27,803</b>	<b>27,806</b>	<b>28,418</b>	<b>28,434</b>	<b>28,442</b>	<b>28,505</b>
of which: Other financial corporations	0	0	0	0	0	0	0
<b>Securities other than shares excluded from broad money</b>	<b>14,029</b>	<b>15,383</b>	<b>15,407</b>	<b>15,383</b>	<b>15,636</b>	<b>16,044</b>	<b>15,783</b>
of which: Other financial corporations	4,494	4,697	4,652	4,865	4,953	5,758	5,555
<b>Loans</b>	<b>12,151</b>	<b>12,513</b>	<b>14,073</b>	<b>15,263</b>	<b>13,528</b>	<b>13,801</b>	<b>16,812</b>
of which: Other financial corporations	2,818	3,180	4,740	5,930	4,195	4,307	7,297
<b>Financial Derivatives</b>	<b>19,488</b>	<b>6,624</b>	<b>7,199</b>	<b>7,057</b>	<b>7,972</b>	<b>26,299</b>	<b>25,498</b>
of which: Other financial corporations	0	0	0	0	0	3,651	0
<b>Trade credit &amp; advances</b>	<b>5,230</b>	<b>24</b>	<b>0</b>	<b>79</b>	<b>81</b>	<b>79</b>	<b>80</b>
of which: Other financial corporations	0	0	0	0	0	0	0
<b>Shares &amp; other equity</b>	<b>1,176,022</b>	<b>1,203,983</b>	<b>1,240,141</b>	<b>1,228,298</b>	<b>1,268,206</b>	<b>1,296,770</b>	<b>1,319,079</b>
<b>Other items (net)</b>	<b>-109,087</b>	<b>-113,038</b>	<b>-175,667</b>	<b>-136,516</b>	<b>-149,279</b>	<b>-179,193</b>	<b>-151,474</b>
Other liabilities (includes central bank float)	539,847	556,193	560,230	564,774	586,569	615,557	617,520
less: Other assets	604,891	609,727	698,023	704,645	722,907	758,773	753,511
plus: Consolidation adjustment	-44,043	-59,503	-37,873	3,356	-12,941	-35,977	-15,483

Note: Depository Corporations include SBP, Banks, DFIs and Deposit Accepting Non Bank Financial Companies. Therefore, these estimates are not comparable with Analytical Accounts of Banking sector (published up to June 2008) and monetary aggregates of weekly monetary survey based on data of SBP and Scheduled banks. Methodological changes are given at the following link:

<http://www.sbp.org.pk/departments/stats/ntb.htm>

2.The data from June 2008 to May 2009 has been revised. The explanatory notes on the revisions are available at SBP website on economic data page under Analytical Accounts - MFSM. The same are also available in Statistical Bulletin under "Notice" section.

## 2.2 Analytical Accounts of State Bank of Pakistan

(Million Rupees)

I T E M S	2008						
	Jun.	Jul.	Aug.	Sep.	Oct.	Nov.	Dec.
<b>Net Foreign Assets</b>	<b>611,547</b>	<b>553,500</b>	<b>501,316</b>	<b>451,283</b>	<b>291,209</b>	<b>250,889</b>	<b>327,422</b>
<b>Claims on nonresidents</b>	<b>899,780</b>	<b>852,372</b>	<b>812,288</b>	<b>767,541</b>	<b>611,507</b>	<b>802,120</b>	<b>893,512</b>
a) Monetary Gold, Coin and Bullion	130,971	135,973	131,337	143,112	123,632	133,004	141,715
b) Holdings of SDRs	14,769	15,424	15,844	16,153	16,298	14,176	14,549
c) Foreign currency	11,074	16,396	20,551	24,325	9,030	17,164	35,395
d) Deposits	467,234	395,824	342,955	254,857	178,744	377,249	436,237
e) Securities other than shares (Foreign)	157,138	165,602	174,806	199,996	155,062	135,631	136,218
f) Loans	0	0	0	0	0	0	0
g) Financial derivatives	0	0	0	0	0	0	0
h) Other	118,594	123,152	126,795	129,098	128,742	124,896	129,397
<i>Of which: Quota-IMF</i>	115,304	119,783	123,502	125,614	125,573	121,578	125,938
<b>less: Liabilities to nonresidents</b>	<b>288,233</b>	<b>298,871</b>	<b>310,972</b>	<b>316,258</b>	<b>320,299</b>	<b>551,231</b>	<b>566,090</b>
a) Deposits	81,679	85,927	91,504	93,857	98,138	94,964	95,275
b) Securities other than shares	116,348	120,685	124,432	126,559	126,519	365,650	378,377
c) Loans	90,206	92,259	95,037	95,842	95,642	90,617	92,438
d) Financial derivatives	0	0	0	0	0	0	0
e) Other	0	0	0	0	0	0	0
<b>Claims on Other Depository Corporations</b>	<b>242,765</b>	<b>240,897</b>	<b>216,278</b>	<b>311,786</b>	<b>292,159</b>	<b>278,065</b>	<b>313,842</b>
<b>Net claims on General Government</b>	<b>1,006,553</b>	<b>1,045,374</b>	<b>1,157,803</b>	<b>1,232,968</b>	<b>1,281,502</b>	<b>1,363,125</b>	<b>1,228,816</b>
<b>Net claims on Central Government</b>	<b>1,040,395</b>	<b>1,084,432</b>	<b>1,207,971</b>	<b>1,268,838</b>	<b>1,343,022</b>	<b>1,420,452</b>	<b>1,284,515</b>
<b>Claims on Central Government</b>	<b>1,074,619</b>	<b>1,109,131</b>	<b>1,228,467</b>	<b>1,295,128</b>	<b>1,363,477</b>	<b>1,440,898</b>	<b>1,351,519</b>
a) Securities other than Shares	1,071,879	1,106,391	1,225,727	1,292,388	1,360,737	1,438,158	1,348,779
b) Other claims	2,740	2,740	2,740	2,740	2,740	2,740	2,740
<b>less: Liabilities to Central Government</b>	<b>34,224</b>	<b>24,698</b>	<b>20,497</b>	<b>26,289</b>	<b>20,454</b>	<b>20,446</b>	<b>67,004</b>
a) Deposits	34,224	24,698	20,497	26,289	20,454	20,446	67,004
b) Other liabilities	0	0	0	0	0	0	0
<b>Net claims on Provincial Governments</b>	<b>-33,842</b>	<b>-39,058</b>	<b>-50,167</b>	<b>-35,871</b>	<b>-61,521</b>	<b>-57,327</b>	<b>-55,699</b>
<b>Claims on Provincial and Local Governments</b>	<b>24,091</b>	<b>24,457</b>	<b>18,309</b>	<b>20,035</b>	<b>19,880</b>	<b>20,393</b>	<b>20,800</b>
a) Securities other than Shares	0	0	0	0	0	0	0
b) Other claims	24,091	24,457	18,309	20,035	19,880	20,393	20,800
<b>less: Liabilities to Provincial and Local Governments</b>	<b>57,933</b>	<b>63,515</b>	<b>68,476</b>	<b>55,906</b>	<b>81,400</b>	<b>77,720</b>	<b>76,498</b>
a) Deposits	57,933	63,515	68,476	55,906	81,400	77,720	76,498
b) Other liabilities	0	0	0	0	0	0	0
<b>Claims on other sectors</b>	<b>25,857</b>	<b>25,820</b>	<b>25,795</b>	<b>25,871</b>	<b>25,913</b>	<b>25,946</b>	<b>26,077</b>
a) Other financial corporations	15,404	15,393	15,393	15,393	15,393	15,392	15,393
b) Public non-financial corporations	12	12	12	12	7	6	7
c) Other non-financial corporations	0	0	0	0	0	0	0
d) Other resident sectors	10,440	10,416	10,390	10,466	10,513	10,547	10,678
<b>Monetary base (1+2+3+4)</b>	<b>1,471,685</b>	<b>1,413,617</b>	<b>1,428,661</b>	<b>1,550,056</b>	<b>1,438,968</b>	<b>1,432,905</b>	<b>1,447,895</b>
<b>1) Currency in Circulation</b>	<b>1,045,857</b>	<b>1,056,721</b>	<b>1,070,325</b>	<b>1,168,082</b>	<b>1,174,246</b>	<b>1,188,079</b>	<b>1,205,289</b>
<b>2) Liabilities to Other Depository Corporations</b>	<b>423,837</b>	<b>354,944</b>	<b>356,365</b>	<b>380,758</b>	<b>262,044</b>	<b>242,051</b>	<b>240,010</b>
Reserve deposits	423,837	354,944	356,365	380,758	262,044	242,051	240,010
Other liabilities	0	0	0	0	0	0	0

## 2.2 Analytical Accounts of State Bank of Pakistan

(Million Rupees)

I T E M S	2008						
	Jun.	Jul.	Aug.	Sep.	Oct.	Nov.	Dec.
<b>3) Deposits included in broad money</b>	<b>1,991</b>	<b>1,952</b>	<b>1,971</b>	<b>1,216</b>	<b>2,678</b>	<b>2,774</b>	<b>2,595</b>
<b>Transferable deposits</b>	<b>14</b>	<b>26</b>	<b>36</b>	<b>34</b>	<b>1,419</b>	<b>1,417</b>	<b>1,411</b>
a) Other financial corporations	4	4	4	4	4	5	5
b) Public non-financial corporations	0	0	0	0	0	0	0
c) Other non-financial corporations	10	22	32	30	22	19	14
d) Other resident sectors	0	0	0	0	1,393	1,393	1,393
<b>Other deposits</b>	<b>1,976</b>	<b>1,926</b>	<b>1,934</b>	<b>1,182</b>	<b>1,258</b>	<b>1,357</b>	<b>1,184</b>
a) Other financial corporations	589	596	608	550	497	490	505
b) Public non-financial corporations	0	0	0	0	0	0	0
c) Other non-financial corporations	0	0	0	0	0	0	0
d) Other resident sectors	1,388	1,330	1,326	632	761	867	679
<b>4) Securities other than shares included in broad money</b>	<b>0</b>	<b>0</b>	<b>0</b>	<b>0</b>	<b>0</b>	<b>0</b>	<b>0</b>
a) Other financial corporations	0	0	0	0	0	0	0
b) Public non-financial corporations	0	0	0	0	0	0	0
c) Other non-financial corporations	0	0	0	0	0	0	0
d) Other resident sectors	0	0	0	0	0	0	0
<b>Deposits excluded from broad money</b>	<b>27,645</b>	<b>27,758</b>	<b>27,801</b>	<b>27,810</b>	<b>27,821</b>	<b>27,811</b>	<b>27,839</b>
<i>Of which: Other financial corporations</i>	0	0	0	0	0	0	0
<b>Securities other than shares excluded from broad money</b>	<b>0</b>	<b>0</b>	<b>0</b>	<b>0</b>	<b>0</b>	<b>0</b>	<b>0</b>
<i>Of which: Other financial corporations</i>	0	0	0	0	0	0	0
<b>Loans</b>	<b>0</b>	<b>0</b>	<b>0</b>	<b>0</b>	<b>0</b>	<b>0</b>	<b>0</b>
<i>Of which: Other financial corporations</i>	0	0	0	0	0	0	0
<b>Financial derivatives</b>	<b>2,040</b>	<b>2,040</b>	<b>2,040</b>	<b>2,540</b>	<b>2,540</b>	<b>2,540</b>	<b>2,540</b>
<i>Of which: Other financial corporations</i>	0	0	0	0	0	0	0
<b>Trade credit and advances</b>	<b>0</b>	<b>0</b>	<b>0</b>	<b>0</b>	<b>0</b>	<b>0</b>	<b>0</b>
<i>Of which: Other financial corporations</i>	0	0	0	0	0	0	0
<b>Shares and Other equity</b>	<b>322,861</b>	<b>419,712</b>	<b>389,011</b>	<b>407,024</b>	<b>398,475</b>	<b>421,961</b>	<b>441,833</b>
a) Funds contributed by owners	100	100	100	100	100	100	100
b) Retained earnings	96,441	188,208	162,219	168,256	179,502	193,464	204,485
c) General & special reserves	76,279	76,279	76,279	76,289	76,289	76,289	76,289
d) SDR allocation	1,526	1,526	1,526	1,526	1,526	1,526	1,526
e) Valuation adjustment	148,515	153,599	148,887	160,853	141,058	150,582	159,434
<b>Other items (net)</b>	<b>62,491</b>	<b>2,465</b>	<b>53,678</b>	<b>34,478</b>	<b>22,978</b>	<b>32,809</b>	<b>-23,949</b>
Other liabilities	91,644	71,484	82,738	92,203	80,221	92,119	80,985
<i>Less: Other Assets</i>	29,153	69,019	29,060	57,725	57,243	59,311	104,935

(Contd.)

## 2.2 Analytical Accounts of State Bank of Pakistan

(Million Rupees)

I T E M S	2009						
	Jan.	Feb.	Mar.	Apr.	May	Jun. <sup>P</sup>	Jul. <sup>P</sup>
<b>Net Foreign Assets</b>	<b>335,611</b>	<b>331,686</b>	<b>404,309</b>	<b>379,695</b>	<b>418,275</b>	<b>481,167</b>	<b>428,085</b>
<b>Claims on nonresidents</b>	<b>923,268</b>	<b>918,477</b>	<b>962,388</b>	<b>1,006,817</b>	<b>1,063,721</b>	<b>1,129,356</b>	<b>1,089,505</b>
a) Monetary Gold, Coin and Bullion	150,374	157,507	152,803	147,291	163,593	157,544	161,785
b) Holdings of SDRs	13,968	13,048	13,351	13,154	12,564	12,436	12,707
c) Foreign currency	45,278	42,523	46,137	45,803	44,319	35,909	36,813
d) Deposits	450,870	441,868	482,722	532,289	568,696	645,864	594,308
e) Securities other than shares (Foreign)	137,381	138,673	139,421	140,072	141,137	143,251	146,402
f) Loans	0	0	0	0	0	0	0
g) Financial derivatives	0	0	0	0	0	0	0
h) Other	125,397	124,858	127,954	128,208	133,413	134,354	137,491
<i>Of which: Quota-IMF</i>	121,800	121,146	124,318	124,661	129,596	130,593	133,660
<b>less: Liabilities to nonresidents</b>	<b>587,657</b>	<b>586,791</b>	<b>558,079</b>	<b>627,121</b>	<b>645,447</b>	<b>648,190</b>	<b>661,420</b>
a) Deposits	134,609	136,177	96,956	96,977	97,523	98,609	100,186
b) Securities other than shares	365,759	363,794	373,320	442,911	460,447	463,588	474,479
c) Loans	87,290	86,821	87,803	87,233	87,477	85,992	86,755
d) Financial derivatives	0	0	0	0	0	0	0
e) Other	0	0	0	0	0	0	0
<b>Claims on Other Depository Corporations</b>	<b>307,311</b>	<b>316,077</b>	<b>402,419</b>	<b>377,557</b>	<b>362,614</b>	<b>324,044</b>	<b>321,797</b>
<b>Net claims on General Government</b>	<b>1,261,859</b>	<b>1,304,927</b>	<b>1,087,023</b>	<b>1,130,410</b>	<b>1,164,854</b>	<b>1,136,184</b>	<b>1,197,103</b>
<b>Net claims on Central Government</b>	<b>1,325,108</b>	<b>1,363,685</b>	<b>1,152,564</b>	<b>1,183,882</b>	<b>1,190,256</b>	<b>1,083,291</b>	<b>1,143,098</b>
<b>Claims on Central Government</b>	<b>1,345,541</b>	<b>1,388,843</b>	<b>1,276,169</b>	<b>1,204,628</b>	<b>1,255,422</b>	<b>1,146,399</b>	<b>1,163,859</b>
a) Securities other than Shares	1,342,801	1,386,103	1,273,429	1,201,888	1,252,682	1,143,659	1,161,119
b) Other claims	2,740	2,740	2,740	2,740	2,740	2,740	2,740
<b>less: Liabilities to Central Government</b>	<b>20,433</b>	<b>25,158</b>	<b>123,605</b>	<b>20,746</b>	<b>65,166</b>	<b>63,107</b>	<b>20,761</b>
a) Deposits	20,433	25,158	123,605	20,746	65,166	63,107	20,761
b) Other liabilities	0	0	0	0	0	0	0
<b>Net claims on Provincial Governments</b>	<b>-63,249</b>	<b>-58,758</b>	<b>-65,541</b>	<b>-53,472</b>	<b>-25,402</b>	<b>52,892</b>	<b>54,005</b>
<b>Claims on Provincial and Local Governments</b>	<b>22,765</b>	<b>21,926</b>	<b>22,354</b>	<b>21,840</b>	<b>37,584</b>	<b>112,574</b>	<b>113,792</b>
a) Securities other than Shares	0	0	0	0	0	0	0
b) Other claims	22,765	21,926	22,354	21,840	37,584	112,574	113,792
<b>less: Liabilities to Provincial and Local Governments</b>	<b>86,015</b>	<b>80,684</b>	<b>87,895</b>	<b>75,312</b>	<b>62,986</b>	<b>59,682</b>	<b>59,787</b>
a) Deposits	86,015	80,684	87,895	75,312	62,986	59,682	59,787
b) Other liabilities	0	0	0	0	0	0	0
<b>Claims on other sectors</b>	<b>26,258</b>	<b>26,353</b>	<b>26,417</b>	<b>26,376</b>	<b>26,377</b>	<b>26,365</b>	<b>26,289</b>
a) Other financial corporations	15,392	15,392	15,392	15,293	15,293	15,294	15,294
b) Public non-financial corporations	6	6	6	6	6	7	6
c) Other non-financial corporations	0	0	0	0	0	0	0
d) Other resident sectors	10,859	10,954	11,019	11,076	11,077	11,065	10,989
<b>Monetary base (1+2+3+4)</b>	<b>1,433,882</b>	<b>1,434,860</b>	<b>1,444,775</b>	<b>1,453,633</b>	<b>1,485,710</b>	<b>1,498,434</b>	<b>1,484,640</b>
<b>1) Currency in Circulation</b>	<b>1,186,535</b>	<b>1,190,891</b>	<b>1,184,115</b>	<b>1,184,395</b>	<b>1,233,154</b>	<b>1,223,521</b>	<b>1,228,903</b>
<b>2) Liabilities to Other Depository Corporations</b>	<b>245,457</b>	<b>242,095</b>	<b>258,808</b>	<b>267,124</b>	<b>250,485</b>	<b>273,070</b>	<b>253,768</b>
Reserve deposits	245,457	242,095	258,808	267,124	250,485	273,070	253,768
Other liabilities	0	0	0	0	0	0	0

## 2.2 Analytical Accounts of State Bank of Pakistan

(Concl.)  
(Million Rupees)

I T E M S	2009						
	Jan.	Feb.	Mar.	Apr.	May	Jun. <sup>P</sup>	Jul. <sup>P</sup>
<b>3) Deposits included in broad money</b>	<b>1,889</b>	<b>1,874</b>	<b>1,851</b>	<b>2,114</b>	<b>2,071</b>	<b>1,842</b>	<b>1,970</b>
<b>Transferable deposits</b>	<b>664</b>	<b>661</b>	<b>660</b>	<b>655</b>	<b>652</b>	<b>654</b>	<b>675</b>
a) Other financial corporations	5	5	5	4	4	10	11
b) Public non-financial corporations	0	0	0	0	0	0	0
c) Other non-financial corporations	32	30	28	24	20	17	38
d) Other resident sectors	627	627	627	627	628	627	627
<b>Other deposits</b>	<b>1,225</b>	<b>1,213</b>	<b>1,192</b>	<b>1,459</b>	<b>1,419</b>	<b>1,189</b>	<b>1,295</b>
a) Other financial corporations	550	574	569	644	664	558	589
b) Public non-financial corporations	0	0	0	0	0	0	0
c) Other non-financial corporations	0	0	0	0	0	0	0
d) Other resident sectors	675	639	623	814	756	631	705
<b>4) Securities other than shares included in broad money</b>	<b>0</b>	<b>0</b>	<b>0</b>	<b>0</b>	<b>0</b>	<b>0</b>	<b>0</b>
a) Other financial corporations	0	0	0	0	0	0	0
b) Public non-financial corporations	0	0	0	0	0	0	0
c) Other non-financial corporations	0	0	0	0	0	0	0
d) Other resident sectors	0	0	0	0	0	0	0
<b>Deposits excluded from broad money</b>	<b>27,837</b>	<b>27,803</b>	<b>27,806</b>	<b>28,418</b>	<b>28,434</b>	<b>28,442</b>	<b>28,505</b>
<i>Of which: Other financial corporations</i>	0	0	0	0	0	0	0
<b>Securities other than shares excluded from broad</b>	<b>0</b>	<b>0</b>	<b>0</b>	<b>0</b>	<b>0</b>	<b>0</b>	<b>0</b>
<i>Of which: Other financial corporations</i>	0	0	0	0	0	0	0
<b>Loans</b>	<b>0</b>	<b>0</b>	<b>0</b>	<b>0</b>	<b>0</b>	<b>0</b>	<b>0</b>
<i>Of which: Other financial corporations</i>	0	0	0	0	0	0	0
<b>Financial derivatives</b>	<b>2,540</b>	<b>2,540</b>	<b>2,540</b>	<b>2,540</b>	<b>2,540</b>	<b>2,443</b>	<b>2,316</b>
<i>Of which: Other financial corporations</i>	0	0	0	0	0	0	0
<b>Trade credit and advances</b>	<b>0</b>	<b>0</b>	<b>0</b>	<b>0</b>	<b>0</b>	<b>0</b>	<b>0</b>
<i>Of which: Other financial corporations</i>	0	0	0	0	0	0	0
<b>Shares and Other equity</b>	<b>477,781</b>	<b>511,442</b>	<b>537,451</b>	<b>516,066</b>	<b>545,619</b>	<b>545,692</b>	<b>568,347</b>
a) Funds contributed by owners	100	100	100	100	100	100	100
b) Retained earnings	135,192	161,604	192,395	176,611	189,598	195,818	214,163
c) General & special reserves	172,729	172,729	172,729	172,729	172,729	172,729	172,729
d) SDR allocation	1,526	1,526	1,526	1,526	1,526	1,526	1,526
e) Valuation adjustment	168,234	175,483	170,702	165,100	181,667	175,519	179,829
<b>Other items (net)</b>	<b>-11,001</b>	<b>2,398</b>	<b>-92,403</b>	<b>-86,618</b>	<b>-90,183</b>	<b>107,252</b>	<b>-110,536</b>
Other liabilities	63,441	75,906	51,268	52,404	47,321	57,852	52,808
<i>Less: Other Assets</i>	74,442	73,508	143,671	139,023	137,505	165,103	163,344

1. The table shows monetary statistics of the Central Bank (State Bank of Pakistan) according to the guidelines of IMF Monetary and Financial Statistics Manual (MFSM 2000). Compilation methodology is available at: (Contd.)

<http://www.sbp.org.pk/departments/Guidelines.htm>

2. General Government include Central and Provincial Governments.

3. Provincial Governments include Local & Provincial Governmtnets.

4. The data may not tally with the table 2 at [http://www.sbp.org.pk/ecodata/Ana\\_Acc\\_Sbp.pdf](http://www.sbp.org.pk/ecodata/Ana_Acc_Sbp.pdf) and table 2.2 of Statistical Bulletin due to difference in classification and Sectorization.

5. Note Explaining major changes is available at: <http://www.sbp.org.pk/departments/stats/ntb.htm>

6. Data from June 08 to Feb 08 has been revised due to recalculation of Monetary Base

7. The data from June 2008 to May 2009 has been revised. The explanatory notes on the revisions are available at SBP website on economic data page under Analytical Accounts - MFSM. The same are also available in Statistical Bulletin under "Notice" section.

## 2.3 Analytical Accounts of Other Depository Corporations

(Million Rupees)

I T E M S	2008						
	Jun.	Jul.	Aug.	Sep.	Oct.	Nov.	Dec.,
<b>Net Foreign Assets</b>	<b>239,997</b>	<b>234,163</b>	<b>235,599</b>	<b>239,374</b>	<b>236,609</b>	<b>252,943</b>	<b>246,959</b>
<b>Claims on nonresidents</b>	<b>285,853</b>	<b>284,993</b>	<b>287,301</b>	<b>299,467</b>	<b>288,643</b>	<b>303,556</b>	<b>299,132</b>
a) Foreign currency	11,037	10,948	16,042	16,413	13,736	19,043	19,729
b) Deposits	138,374	138,541	135,012	137,331	131,876	139,479	137,045
c) Securities other than shares	85,847	83,206	83,379	89,594	86,477	89,529	88,233
d) Loans	0	0	0	0	0	0	0
e) Financial derivatives	0	0	0	0	0	0	0
f) Shares & other equity	50,410	52,184	52,868	56,129	56,554	55,504	54,125
g) Other	185	114	0	0	0	0	0
<b>less: Liabilities to nonresidents</b>	<b>45,855</b>	<b>50,830</b>	<b>51,702</b>	<b>60,093</b>	<b>52,035</b>	<b>50,612</b>	<b>52,173</b>
a) Deposits	30,026	32,534	34,214	33,532	34,311	32,965	36,762
b) Securities other than shares	0	0	0	0	0	0	0
c) Loans	15,760	18,230	16,957	26,507	17,668	17,497	15,133
d) Financial derivatives	0	0	0	0	0	0	0
e) Other	69	66	531	54	56	151	278
<b>Claims on Central bank</b>	<b>491,315</b>	<b>424,227</b>	<b>414,544</b>	<b>438,177</b>	<b>334,837</b>	<b>314,841</b>	<b>323,191</b>
a) Currency	69,077	67,347	57,511	65,491	70,584	71,758	77,698
b) Reserve deposits	45,391	45,720	43,203	43,975	31,078	26,761	28,327
c) Other claims	376,847	311,161	313,830	328,711	233,175	216,323	217,166
<b>Net Claims on General Government</b>	<b>475,848</b>	<b>506,019</b>	<b>440,563</b>	<b>356,444</b>	<b>385,729</b>	<b>408,322</b>	<b>475,009</b>
<b>Net claims on Central Government</b>	<b>610,422</b>	<b>634,256</b>	<b>575,735</b>	<b>495,902</b>	<b>531,112</b>	<b>567,680</b>	<b>642,142</b>
<b>Claims on Central Government</b>	<b>830,035</b>	<b>859,903</b>	<b>837,144</b>	<b>754,533</b>	<b>778,172</b>	<b>799,460</b>	<b>882,477</b>
a) Securities other than Shares	738,154	786,079	762,888	663,532	664,467	671,764	749,379
b) Other claims	91,882	73,825	74,255	91,001	113,705	127,696	133,098
<b>less: Liabilities to Central Government</b>	<b>219,613</b>	<b>225,647</b>	<b>261,409</b>	<b>258,631</b>	<b>247,060</b>	<b>231,780</b>	<b>240,335</b>
a) Deposits	219,613	225,647	261,409	258,631	247,060	231,780	240,335
b) Other liabilities	0	0	0	0	0	0	0
<b>Net claims on Provincial Governments</b>	<b>-134,574</b>	<b>-128,237</b>	<b>-135,172</b>	<b>-139,458</b>	<b>-145,383</b>	<b>-159,358</b>	<b>-167,132</b>
<b>Claims on Provincial Governments</b>	<b>46,753</b>	<b>42,088</b>	<b>41,291</b>	<b>35,259</b>	<b>30,744</b>	<b>24,870</b>	<b>22,851</b>
a) Securities other than Shares	75	75	75	75	75	75	0
b) Other claims	46,678	42,012	41,215	35,184	30,669	24,795	22,851
<b>less: Liabilities to Provincial Governments</b>	<b>181,327</b>	<b>170,325</b>	<b>176,462</b>	<b>174,717</b>	<b>176,127</b>	<b>184,228</b>	<b>189,984</b>
a) Deposits	181,325	170,323	176,460	174,715	176,125	184,226	189,982
b) Other liabilities	2	2	2	2	2	2	2
<b>Claims on other sectors</b>	<b>3,165,208</b>	<b>3,114,004</b>	<b>3,165,715</b>	<b>3,315,533</b>	<b>3,347,869</b>	<b>3,371,208</b>	<b>3,411,111</b>
a) Other financial corporations	115,806	114,092	113,803	117,867	108,307	105,409	106,488
b) Public non-financial corporations	198,562	188,985	211,103	250,270	260,367	259,889	270,336
c) Other non-financial corporations	2,128,269	2,100,094	2,131,236	2,242,112	2,275,096	2,294,787	2,323,536
d) Other resident sectors	722,572	710,832	709,573	705,283	704,099	711,123	710,750

## 2.3 Analytical Accounts of Other Depository Corporations

(Million Rupees)

I T E M S	2008						
	Jun.	Jul.	Aug.	Sep.	Oct.	Nov.	Dec.
<b>Liabilities to central bank</b>	<b>233,224</b>	<b>232,754</b>	<b>199,803</b>	<b>303,339</b>	<b>284,359</b>	<b>265,784</b>	<b>304,278</b>
<b>Deposits included in broad money(1+2)</b>	<b>3,550,755</b>	<b>3,432,661</b>	<b>3,418,310</b>	<b>3,408,872</b>	<b>3,346,735</b>	<b>3,402,108</b>	<b>3,500,290</b>
<b>1) Transferable deposits</b>	<b>2,320,163</b>	<b>2,215,427</b>	<b>2,177,445</b>	<b>2,119,324</b>	<b>2,063,766</b>	<b>2,116,912</b>	<b>2,190,510</b>
a) Other financial corporations	43,877	49,169	36,961	30,928	33,421	34,319	42,607
b) Public non-financial corporations	142,569	114,131	121,014	115,638	125,762	129,507	116,300
c) Other non-financial corporations	855,764	816,625	787,948	744,885	704,890	730,295	777,718
d) Other resident sectors	1,277,953	1,235,502	1,231,523	1,227,873	1,199,692	1,222,792	1,253,885
<b>2) Other deposits</b>	<b>1,230,592</b>	<b>1,217,234</b>	<b>1,240,864</b>	<b>1,289,547</b>	<b>1,282,969</b>	<b>1,285,196</b>	<b>1,309,780</b>
a) Other financial corporations including	41,726	38,060	38,844	48,585	43,991	34,148	30,939
b) Public non-financial corporations	170,149	154,334	153,059	149,587	148,049	138,999	150,903
c) Other non-financial corporations	468,205	466,377	480,019	500,023	512,782	524,032	506,939
d) Other resident sectors	550,512	558,463	568,943	591,352	578,147	588,017	620,999
<b>Securities other than shares, included in broad money</b>	<b>1,887</b>	<b>1,931</b>	<b>1,981</b>	<b>1,930</b>	<b>1,875</b>	<b>2,321</b>	<b>1,816</b>
a) Other financial corporations	185	185	185	185	185	150	150
b) Public non-financial corporations	142	142	142	142	142	152	152
c) Other non-financial corporations	1,555	1,600	1,650	1,599	1,544	2,015	1,510
d) Other resident sectors	3	3	3	3	3	3	3
<b>Deposits excluded from broad money</b>	<b>0</b>	<b>0</b>	<b>0</b>	<b>0</b>	<b>0</b>	<b>0</b>	<b>0</b>
Of which: Other financial corporations	0	0	0	0	0	0	0
<b>Securities other than shares, excluded from broad money</b>	<b>14,681</b>	<b>14,562</b>	<b>14,568</b>	<b>14,505</b>	<b>14,569</b>	<b>14,529</b>	<b>14,334</b>
Of which: Other financial corporations	4,517	4,524	4,528	4,498	4,543	4,267	4,462
<b>Loans</b>	<b>13,137</b>	<b>15,004</b>	<b>14,566</b>	<b>14,212</b>	<b>13,143</b>	<b>12,679</b>	<b>12,548</b>
Of which: Other financial corporations	3,782	5,649	5,213	4,861	3,630	3,328	2,568
<b>Financial derivatives</b>	<b>1,013</b>	<b>61</b>	<b>61</b>	<b>51</b>	<b>41</b>	<b>31</b>	<b>21</b>
Of which: Other financial corporations	942	0	0	0	0	0	0
<b>Trade credit and advances</b>	<b>246</b>	<b>620</b>	<b>1,431</b>	<b>1,230</b>	<b>5,615</b>	<b>7,593</b>	<b>8,455</b>
Of which: Other financial corporations	0	0	0	0	0	0	0
<b>Shares and other equity</b>	<b>646,277</b>	<b>671,459</b>	<b>666,444</b>	<b>669,043</b>	<b>673,448</b>	<b>697,456</b>	<b>696,259</b>
a) Funds contributed by owners	303,165	316,563	319,503	319,821	320,010	333,653	343,007
b) Retained earnings	120,659	131,486	130,244	133,360	131,179	139,337	134,867
c) General and special reserves	169,349	165,039	167,398	170,117	172,940	180,199	181,689
d) Valuation adjustment	53,105	58,371	49,299	45,745	49,318	44,267	36,696
<b>Other items (net)</b>	<b>-88,360</b>	<b>-89,399</b>	<b>-57,880</b>	<b>-61,193</b>	<b>-23,511</b>	<b>-40,001</b>	<b>-64,820</b>
Other liabilities	412,387	459,518	483,542	459,062	496,085	487,300	472,778
less: Other assets	494,508	533,732	520,894	525,837	554,876	512,705	518,821
plus: Consolidation adjustment	-6,239	-15,185	-20,529	5,581	35,280	-14,596	-18,777

(Contd.)



## 2.3 Analytical Accounts of Other Depository Corporations

(Million Rupees)

I T E M S	2009						
	Jan.	Feb.	Mar.	Apr.	May	Jun. <sup>1</sup>	Jul. <sup>P1</sup>
<b>Net Foreign Assets</b>	<b>251,888</b>	<b>245,468</b>	<b>265,895</b>	<b>259,245</b>	<b>259,547</b>	<b>270,535</b>	<b>284,425</b>
<b>Claims on nonresidents</b>	<b>304,835</b>	<b>301,377</b>	<b>318,515</b>	<b>312,308</b>	<b>312,302</b>	<b>334,954</b>	<b>354,292</b>
a) Foreign currency	14,008	13,872	15,708	12,493	14,361	13,548	13,251
b) Deposits	140,667	136,260	151,277	150,410	146,020	144,735	165,234
c) Securities other than shares	82,226	83,096	81,693	80,493	81,558	87,477	86,833
d) Loans	(	(	(	(	(	2	2
e) Financial derivatives	(	(	(	(	(	5,583	4,917
f) Shares & other equity	67,938	68,145	69,846	68,912	70,362	83,581	84,037
g) Other	(	(	(	(	(	23	18
<b>less: Liabilities to nonresidents</b>	<b>52,952</b>	<b>55,912</b>	<b>52,615</b>	<b>53,058</b>	<b>52,755</b>	<b>64,415</b>	<b>69,862</b>
a) Deposits	34,551	34,915	34,327	34,725	35,113	42,518	44,734
b) Securities other than shares	(	7	7	7	7	14	14
c) Loans	14,105	17,117	14,970	15,042	15,146	17,363	17,721
d) Financial derivatives	2,637	2,224	1,600	1,536	703	2,312	5,106
e) Other	1,654	1,646	1,716	1,745	1,786	2,208	2,285
<b>Claims on Central bank</b>	<b>309,735</b>	<b>308,312</b>	<b>333,278</b>	<b>336,260</b>	<b>326,090</b>	<b>356,921</b>	<b>325,400</b>
a) Currency	64,100	64,335	74,725	68,614	66,432	77,435	67,538
b) Reserve deposits	18,156	25,954	27,327	27,725	29,293	178,496	154,190
c) Other claims	227,482	218,021	231,222	239,921	230,365	100,985	103,672
<b>Net Claims on General Government</b>	<b>482,485</b>	<b>526,326</b>	<b>604,702</b>	<b>672,428</b>	<b>820,098</b>	<b>882,942</b>	<b>935,134</b>
<b>Net claims on Central Government</b>	<b>647,705</b>	<b>708,097</b>	<b>789,421</b>	<b>825,345</b>	<b>868,022</b>	<b>932,265</b>	<b>975,782</b>
<b>Claims on Central Government</b>	<b>893,962</b>	<b>959,828</b>	<b>1,012,127</b>	<b>1,065,736</b>	<b>1,113,424</b>	<b>1,171,396</b>	<b>1,232,058</b>
a) Securities other than Shares	763,546	829,501	875,347	910,712	945,365	1,002,012	1,064,485
b) Other claims	130,416	130,327	136,781	155,023	168,057	169,384	167,574
<b>less: Liabilities to Central Government</b>	<b>246,254</b>	<b>251,731</b>	<b>222,707</b>	<b>240,387</b>	<b>245,402</b>	<b>239,127</b>	<b>256,276</b>
a) Deposits	246,254	251,731	222,707	240,387	245,402	239,127	256,276
b) Other liabilities	(	(	(	(	(	(	(
<b>Net claims on Provincial Governments</b>	<b>-165,224</b>	<b>-181,771</b>	<b>-184,717</b>	<b>-152,921</b>	<b>-47,924</b>	<b>-49,326</b>	<b>-40,645</b>
<b>Claims on Provincial Governments</b>	<b>24,165</b>	<b>19,321</b>	<b>14,577</b>	<b>52,870</b>	<b>158,905</b>	<b>178,325</b>	<b>180,204</b>
a) Securities other than Shares	(	(	(	(	88	(	(
b) Other claims	24,165	19,321	14,577	52,870	158,821	178,325	180,203
<b>less: Liabilities to Provincial Governments</b>	<b>189,392</b>	<b>201,092</b>	<b>199,294</b>	<b>205,791</b>	<b>206,834</b>	<b>227,651</b>	<b>220,852</b>
a) Deposits	189,390	201,090	199,292	205,785	206,832	227,651	220,850
b) Other liabilities	2	2	2	2	2	2	2
<b>Claims on other sectors</b>	<b>3,357,655</b>	<b>3,339,212</b>	<b>3,377,955</b>	<b>3,355,626</b>	<b>3,334,677</b>	<b>3,369,192</b>	<b>3,310,470</b>
a) Other financial corporations	95,224	103,124	105,550	107,544	105,805	110,468	118,458
b) Public non-financial corporations	264,080	272,557	344,051	344,552	348,136	364,905	359,264
c) Other non-financial corporations	2,295,612	2,260,607	2,231,197	2,161,584	2,141,171	2,157,271	2,113,145
d) Other resident sectors	702,742	702,924	697,157	741,945	739,565	736,542	719,598

## 2.3 Analytical Accounts of Other Depository Corporations

(Concl.d.)  
(Million Rupees)

I T E M S	2009						
	Jan.	Feb.	Mar.	Apr.	May	Jun. <sup>P</sup>	Jul. <sup>P</sup>
<b>Liabilities to Central bank</b>	<b>291,695</b>	<b>288,014</b>	<b>363,195</b>	<b>372,987</b>	<b>358,676</b>	<b>321,236</b>	<b>318,965</b>
<b>Deposits included in broad money (1+2)</b>	<b>3,454,515</b>	<b>3,491,817</b>	<b>3,525,746</b>	<b>3,547,728</b>	<b>3,670,296</b>	<b>3,816,074</b>	<b>3,763,744</b>
<b>1) Transferable deposits</b>	<b>2,162,410</b>	<b>2,200,319</b>	<b>2,234,070</b>	<b>2,243,069</b>	<b>2,336,807</b>	<b>2,474,481</b>	<b>2,402,677</b>
a) Other financial corporations	47,574	44,254	38,659	32,951	34,548	47,258	52,677
b) Public non-financial corporations	118,305	133,566	127,495	128,117	129,985	123,427	119,875
c.) Other non-financial corporations	758,645	770,730	788,191	773,118	822,696	870,887	798,732
d) Other resident sectors	1,237,887	1,251,769	1,279,725	1,308,881	1,349,579	1,432,910	1,431,393
<b>2) Other deposits</b>	<b>1,292,105</b>	<b>1,291,497</b>	<b>1,291,676</b>	<b>1,304,659</b>	<b>1,333,489</b>	<b>1,341,593</b>	<b>1,361,067</b>
a) Other financial corporations including	31,133	27,191	29,759	25,817	25,627	38,978	33,251
b) Public non-financial corporations	142,198	144,574	151,354	157,907	167,535	170,864	174,528
c) Other non-financial corporations	522,299	522,858	503,941	505,504	513,320	462,687	492,032
d) Other resident sectors	596,475	596,874	606,622	615,431	627,006	669,065	661,257
<b>Securities other than shares, included in broad money</b>	<b>1,710</b>	<b>481</b>	<b>363</b>	<b>338</b>	<b>324</b>	<b>308</b>	<b>307</b>
a) Other financial corporations	150	0	0	0	0	0	0
b) Public non-financial corporations	152	0	0	0	0	0	0
c) Other non-financial corporations	1,404	481	363	338	324	308	307
d) Other resident sectors	3	0	0	0	0	0	0
<b>Deposits excluded from broad money</b>	<b>0</b>	<b>0</b>	<b>0</b>	<b>0</b>	<b>0</b>	<b>0</b>	<b>0</b>
Of which: Other financial corporations	0	0	0	0	0	0	0
<b>Securities other than shares, excluded from broad money</b>	<b>14,029</b>	<b>15,383</b>	<b>15,407</b>	<b>15,383</b>	<b>15,636</b>	<b>16,044</b>	<b>15,783</b>
Of which: Other financial corporations	4,494	4,697	4,652	4,865	4,953	5,758	5,555
<b>Loans</b>	<b>12,151</b>	<b>12,513</b>	<b>14,073</b>	<b>15,263</b>	<b>13,528</b>	<b>13,801</b>	<b>16,812</b>
Of which: Other financial corporations	2,818	3,180	4,740	5,930	4,195	4,307	7,297
<b>Financial derivatives</b>	<b>16,948</b>	<b>4,084</b>	<b>4,659</b>	<b>4,517</b>	<b>5,432</b>	<b>23,856</b>	<b>23,182</b>
Of which: Other financial corporations	0	0	0	0	0	3,651	0
<b>Trade credit and advances</b>	<b>5,230</b>	<b>24</b>	<b>0</b>	<b>79</b>	<b>81</b>	<b>79</b>	<b>80</b>
Of which: Other financial corporations	0	0	0	0	0	0	0
<b>Shares and other equity</b>	<b>698,241</b>	<b>692,541</b>	<b>702,690</b>	<b>712,232</b>	<b>722,587</b>	<b>751,078</b>	<b>750,732</b>
a) Funds contributed by owners	355,307	353,164	367,170	379,352	386,708	400,365	398,538
b) Retained earnings	123,717	106,388	104,917	99,136	100,547	111,159	117,382
c) General and special reserves	180,918	183,073	168,974	171,812	172,356	172,606	165,896
d) Valuation adjustment	38,300	49,917	61,629	61,932	62,975	66,947	68,916
<b>Other items (net)</b>	<b>-82,288</b>	<b>-85,493</b>	<b>-44,296</b>	<b>-44,806</b>	<b>-45,984</b>	<b>-62,724</b>	<b>-34,012</b>
Other liabilities	476,406	480,287	508,962	512,370	539,248	557,704	564,711
less: Other assets	530,449	536,219	554,352	565,623	585,403	593,669	590,167
plus: Consolidation adjustment	-28,245	-29,561	1,095	8,447	171	-26,758	-8,557

Note: Other Depository Corporations include the data of Banks, DFIs, and Deposit Accepting Non Bank Financial Companies. Therefore, the estimates are not comparable with Analytical Accounts of Banking Sector (up to June 2008) and monetary aggregates of weekly monetary survey based on data of SBP and Scheduled Banks

2. General Government includes Central and Provincial Government

3. Provincial Governments includes Provincial and Local Governmnets

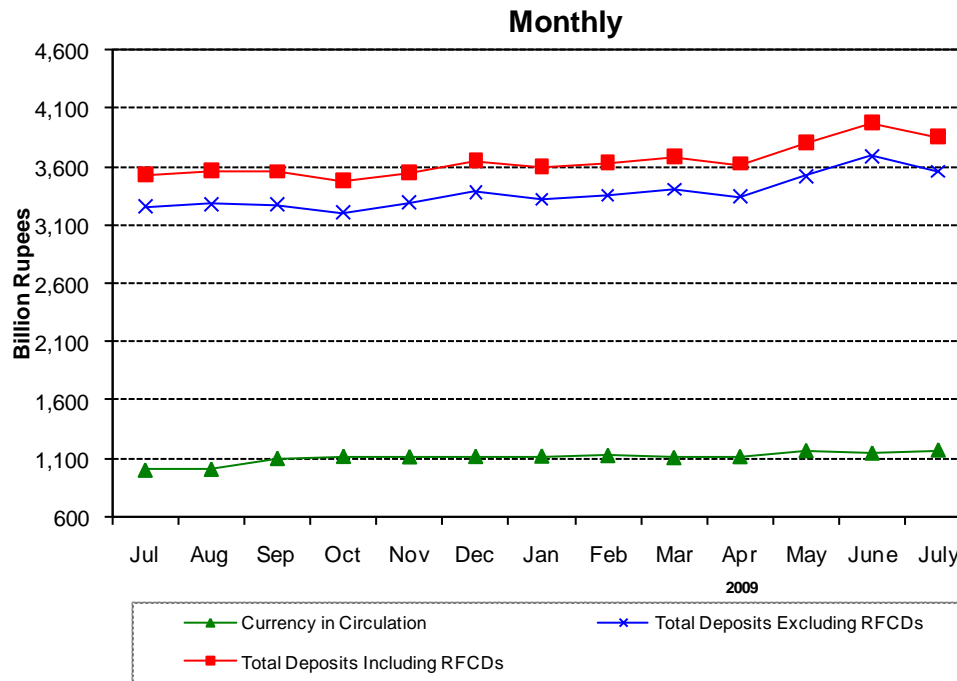
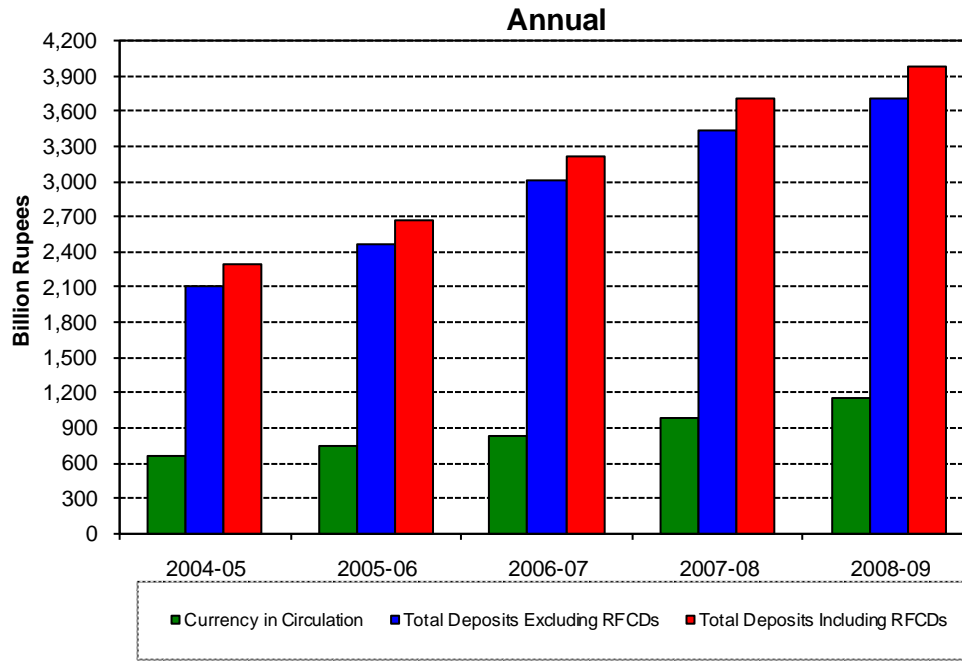
4. The data may not tally with the table 3 at [http://www.sbp.org.pk/ecodata/Ana\\_Acc\\_bkg.pdf](http://www.sbp.org.pk/ecodata/Ana_Acc_bkg.pdf) and table 2.3 of Statistical Bulletin due to difference in classification and Sectorization

5. Note Explaining major changes is available at: <http://www.sbp.org.pk/departments/stats/ntb.htm>

6. The data from June 2008 to May 2009 has been revised. The explanatory notes on the revisions are available at SBP website on economic data page under Analytical Accounts - MFSM. The same are also available in Statistical Bulletin under "Notice" section.

7. The data from June 2008 to May 2009 has been revised. The explanatory notes on the revisions are available at SBP website on economic data page under Analytical Accounts - MFSM. The same are also available in Statistical Bulletin under "Notice" section.

# Monetary Statistics



## 2.4 Monetary Statistics

(Million Rupees)

LAST SATURDAY/ LASTWORKING DAY	Currency	Other	Currency	Banks'	Reserve	Total	Resident	Total	Broad	Money	
	in	Deposits	in tills of	Deposits	Money	Deposits	Foreign	Deposits	Money	Multi-	
	Circulation	with SBP <sup>1</sup>	Scheduled Banks	with SBP	(M <sub>0</sub> ) (1+2+3+4)	Excluding RFCDs	Currency Deposits	Including RFCDs	(M <sub>2</sub> ) (1+2+8)	plier (9/5)	
	1	2	3	4	5	6	7	8	9	10	
2004	Jun.	578,116	2,116	36,432	156,204	<b>772,868</b>	1,759,566	145,694	1,905,260	<b>2,485,492</b>	<b>3.22</b>
	Dec.	655,283	5,499	38,836	196,348	<b>895,966</b>	1,895,052	172,493	2,067,545	<b>2,728,327</b>	<b>3.05</b>
2005	Jun.	665,901	3,335	43,472	196,302	<b>909,010</b>	2,111,113	180,295	2,291,408	<b>2,960,644</b>	<b>3.26</b>
	Dec.	731,749	3,327	42,527	207,750	<b>985,352</b>	2,266,913	189,525	2,456,438	<b>3,191,513</b>	<b>3.24</b>
2006	Jun.	740,390	4,931	48,439	207,574	<b>1,001,334</b>	2,466,083	195,501	2,661,584	<b>3,406,905</b>	<b>3.40</b>
	Dec.	874,260	4,798	48,367	264,356	<b>1,191,781</b>	2,596,030	198,719	2,794,749	<b>3,673,807</b>	<b>3.08</b>
2007	Jun.	840,181	7,012	58,072	305,169	<b>1,210,434</b>	3,010,650	207,312	3,217,962	<b>4,065,155</b>	<b>3.36</b>
	Dec.	1,007,831	5,153	68,371	286,560	<b>1,367,915</b>	3,165,819	228,042	3,393,861	<b>4,406,846</b>	<b>3.22</b>
2008	Jun.	982,325	4,261	68,966	424,549	<b>1,480,101</b>	3,439,126	263,430	3,702,556	<b>4,689,143</b>	<b>3.17</b>
	Dec.	1,124,219	5,040	86,649	240,583	<b>1,456,491</b>	3,386,356	276,283	3,662,639	<b>4,791,898</b>	<b>3.29</b>
2009	Jun. <sup>P</sup>	1,152,173	4,659	77,006	273,740	<b>1,507,577</b>	3,700,010	280,364	3,980,374	<b>5,137,205</b>	<b>3.41</b>
2008	Jul.	1,010,388	4,214	59,907	344,651	<b>1,419,160</b>	3,261,229	278,803	3,540,032	<b>4,554,634</b>	<b>3.21</b>
	Aug.	1,017,881	4,237	57,930	348,361	<b>1,428,409</b>	3,285,357	284,728	3,570,085	<b>4,592,203</b>	<b>3.21</b>
	Sep.	1,107,349	3,544	66,255	381,425	<b>1,558,573</b>	3,275,826	287,072	3,562,898	<b>4,673,791</b>	<b>3.00</b>
	Oct.	1,124,846	5,060	66,314	263,633	<b>1,459,853</b>	3,207,398	278,248	3,485,646	<b>4,615,553</b>	<b>3.16</b>
	Nov.	1,121,131	5,210	72,502	242,611	<b>1,441,454</b>	3,293,729	264,630	3,558,359	<b>4,684,700</b>	<b>3.25</b>
	Dec.	1,124,219	5,040	86,649	240,583	<b>1,456,491</b>	3,386,356	276,283	3,662,639	<b>4,791,898</b>	<b>3.29</b>
	Jan.	1,127,351	4,286	64,773	246,081	<b>1,442,491</b>	3,324,617	277,375	3,601,992	<b>4,733,629</b>	<b>3.28</b>
2009	Feb.	1,131,689	4,254	64,799	242,742	<b>1,443,484</b>	3,360,607	284,165	3,644,772	<b>4,780,715</b>	<b>3.31</b>
	Mar.	1,114,531	4,244	75,193	259,443	<b>1,453,411</b>	3,406,850	279,662	3,686,512	<b>4,805,287</b>	<b>3.31</b>
	Apr.	1,122,685	4,821	66,077	235,947	<b>1,429,530</b>	3,350,834	278,598	3,629,432	<b>4,756,938</b>	<b>3.32</b>
	May	1,172,229	4,902	66,585	251,137	<b>1,494,853</b>	3,522,700	282,944	3,805,644	<b>4,982,775</b>	<b>3.33</b>
	Jun. <sup>P</sup>	1,152,173	4,659	77,006	273,740	<b>1,507,577</b>	3,700,010	280,364	3,980,374	<b>5,137,205</b>	<b>3.41</b>
	Jul. <sup>P</sup>	1,177,818	4,812	64,064	269,248	<b>1,515,942</b>	3,567,244	292,483	3,859,727	<b>5,042,357</b>	<b>3.33</b>

1- Excluding IMF A/c Nos. 1 & 2, SAF loan account, counterpart funds, deposits of foreign central banks, foreign governments, international organizations and deposit money banks.

Note : i - Data is based on weekly returns. The quarterly data covers the period up to the last working day and the Monthly data up to the last Saturday of the month.

ii-Compilation of M1 based on weekly data has been discontinued. Now M1 is being compiled on the basis of monthly returns and is given in Table 2.1

## 2.5 Analysis of Causative Factors for Changes in Monetary Statistics

(Million Rupees)

DESCRIPTION	2005-06			2006-07		
	Jul.-Dec.	Jan.-Jun.	Total	Jul.-Dec.	Jan.-Jun.	Total
<b>1. Public Sector</b>	<b>64,281</b>	<b>22,598</b>	<b>86,879</b>	<b>19,945</b>	<b>72,899</b>	<b>92,844</b>
i) Budgetary support	80,232	(13,169)	67,063	37,278	64,737	102,015
ii) Commodity operations	(15,123)	35,048	19,926	(15,934)	6,724	(9,210)
iii) Effect of Zakat fund etc.	(829)	719	(110)	(1,400)	1,438	39
<b>2. Credit to Non-Government Sector (A+B+C)</b>	<b>294,145</b>	<b>114,255</b>	<b>408,401</b>	<b>251,333</b>	<b>134,371</b>	<b>385,705</b>
(A) Credit to private Sector	297,651	104,146	401,797	250,782	114,936	365,718
i) Commercial Banks	295,864	121,548	417,411	248,065	115,526	363,591
ii) Specialized Banks	1,787	(17,402)	(15,615)	2,717	(589)	2,128
(B) Credit to Public Sector Enterprise (PSEs)	(1,994)	9,636	7,643	(1,379)	21,068	19,689
i) Autonomous Bodies	(2,641)	7,396	4,755	4,475	16,694	21,169
ii) Others	(38)	2,437	2,399	(5,660)	4,433	(1,227)
iii) PSEs Special Account-Debt Replacement with SBP	686	(197)	489	(194)	(59)	(253)
(C) Other Financial Institutions (SBP Credit to NBFIs)	(1,512)	473	(1,038)	1,930	(1,632)	298
<b>3. Counterpart Funds</b>	<b>14</b>	<b>(21)</b>	<b>(7)</b>	<b>34</b>	<b>(7)</b>	<b>27</b>
<b>4. Other Items (net)</b>	<b>(60,902)</b>	<b>(61,514)</b>	<b>(122,416)</b>	<b>6,640</b>	<b>(101,517)</b>	<b>(94,877)</b>
<b>5. Domestic Credit Expansion (+) / Contraction (-) (1+2+3+4)</b>	<b>297,539</b>	<b>75,318</b>	<b>372,857</b>	<b>277,953</b>	<b>105,746</b>	<b>383,699</b>
<b>6. Foreign Assets (net)</b>	<b>(66,670)</b>	<b>140,073</b>	<b>73,403</b>	<b>(11,050)</b>	<b>285,601</b>	<b>274,551</b>
<b>7. Monetary Expansion ((5+6)</b>	<b>230,869</b>	<b>215,392</b>	<b>446,260</b>	<b>266,903</b>	<b>391,347</b>	<b>658,250</b>

DESCRIPTION	2008						2009
	Jul.	Aug.	Sep.	Oct.	Nov.	Dec.	Jan.
<b>1. Public Sector</b>	<b>38,418</b>	<b>72,042</b>	<b>30,204</b>	<b>12,615</b>	<b>122,498</b>	<b>(56,267)</b>	<b>54,334</b>
i) Budgetary support	58,239	72,259	27,987	(8,206)	117,727	(57,711)	54,598
ii) Commodity operations	(19,949)	(423)	3,708	21,504	4,725	1,312	201
iii) Effect of Zakat fund etc.	128	206	(1,492)	(683)	46	133	(465)
<b>2. Credit to Non-Government Sector (A+B+C)</b>	<b>(50,021)</b>	<b>54,293</b>	<b>117,839</b>	<b>54,698</b>	<b>24,700</b>	<b>62,885</b>	<b>(46,588)</b>
(A) Credit to private Sector	(42,486)	19,329	89,978	50,126	29,788	56,408	(45,264)
i) Commercial Banks	(43,009)	19,100	90,522	51,498	31,089	55,553	(46,774)
ii) Specialized Banks	523	230	(543)	(1,373)	(1,302)	855	1,510
(B) Credit to Public Sector Enterprise (PSEs)	(7,573)	34,967	27,870	4,620	(5,058)	6,518	(1,333)
i) Autonomous Bodies	(5,496)	3,388	11,782	554	1,443	1,852	91
ii) Others	(1,993)	31,579	16,088	4,066	(6,501)	4,668	(1,424)
iii) PSEs Special Account-Debt Replacement with SBP	(84)	0	0	0	0	(2)	0
(C) Other Financial Institutions (SBP Credit to NBFIs)	39	(3)	(9)	(48)	(29)	(41)	9
<b>3. Counterpart Funds</b>	<b>0</b>	<b>0</b>	<b>0</b>	<b>0</b>	<b>0</b>	<b>0</b>	<b>0</b>
<b>4. Other Items (net)</b>	<b>(81,806)</b>	<b>(14,033)</b>	<b>(16,995)</b>	<b>(14,251)</b>	<b>2,662</b>	<b>35,174</b>	<b>(73,398)</b>
<b>5. Domestic Credit Expansion (+) / Contraction (-) (1+2+3+4)</b>	<b>(93,410)</b>	<b>112,302</b>	<b>131,048</b>	<b>53,062</b>	<b>149,860</b>	<b>41,791</b>	<b>(65,651)</b>
<b>6. Foreign Assets (net)</b>	<b>(41,099)</b>	<b>(74,733)</b>	<b>(73,066)</b>	<b>(102,612)</b>	<b>(65,793)</b>	<b>65,406</b>	<b>3,482</b>
<b>7. Monetary Expansion (+) / Contraction (-) (5+6)</b>	<b>(134,509)</b>	<b>37,569</b>	<b>57,982</b>	<b>(49,550)</b>	<b>84,067</b>	<b>107,197</b>	<b>(62,170)</b>

Note 1. The composition of autonomous bodies has changed over the years. At present, WAPDA, OGDC, KESC, PTCL, PIA, and Pak. Steel are included in the autonomous bodies.

2. The data has been revised due to inclusion of privatization commission account with NBP in government deposits since Jun 2003 to Jun 2006 ( half yearly basis) and Jun 2006 on monthly basis upto end-Jun 2007.

## 2.5 Analysis of Causative Factors for Changes in Monetary Statistics

(Million Rupees)

DESCRIPTION	2007-08 <sup>P</sup>			2008-09 <sup>P</sup>		
	Jul.-Dec.	Jan.-Jun.	Total	Jul.-Dec.	Jan.-Jun.	Total
<b>1. Public Sector</b>	<b>201,602</b>	<b>382,213</b>	<b>583,815</b>	<b>219,510</b>	<b>304,508</b>	<b>524,018</b>
i) Budgetary support	228,608	325,966	554,574	210,295	106,162	316,457
ii) Commodity operations	(26,000)	54,652	28,652	10,877	198,119	208,996
iii) Effect of Zakat fund etc.	(1,006)	1,594	588	(1,662)	228	(1,434)
<b>2. Credit to Non-Government Sector (A+B+C)</b>	<b>274,965</b>	<b>166,705</b>	<b>441,670</b>	<b>264,394</b>	<b>(92,543)</b>	<b>171,851</b>
(A) Credit to private Sector	261,354	147,073	408,427	203,143	(184,279)	18,864
i) Commercial Banks	259,406	142,837	402,243	204,753	(189,672)	15,081
ii) Specialized Banks	1,948	4,236	6,184	(1,610)	5,393	3,783
(B) Credit to Public Sector Enterprise (PSEs)	12,518	20,488	33,005	61,344	91,294	152,638
i) Autonomous Bodies	18,492	10,747	29,239	13,523	11,276	24,799
ii) Others	(5,949)	9,834	3,884	47,907	80,018	127,925
iii) PSEs Special Account-Debt Replacement with SBP	(25)	(93)	(118)	(86)	0	(86)
(C) Other Financial Institutions (SBP Credit to NBFIs)	1,093	(855)	238	(91)	444	353
<b>3. Counterpart Funds</b>	<b>(12)</b>	<b>(12)</b>	<b>(24)</b>	<b>0</b>	<b>0</b>	<b>0</b>
<b>4. Other Items (net)</b>	<b>5,717</b>	<b>(89,809)</b>	<b>(84,092)</b>	<b>(89,249)</b>	<b>(8,387)</b>	<b>(97,636)</b>
<b>5. Domestic Credit Expansion (+) /     Contraction (-) (1+2+3+4)</b>	<b>482,273</b>	<b>459,096</b>	<b>941,369</b>	<b>394,653</b>	<b>203,580</b>	<b>598,233</b>
<b>6. Foreign Assets (net)</b>	<b>(140,582)</b>	<b>(176,799)</b>	<b>(317,381)</b>	<b>(291,897)</b>	<b>141,727</b>	<b>(150,170)</b>
<b>7. Monetary Expansion ((5+6)</b>	<b>341,691</b>	<b>282,297</b>	<b>623,988</b>	<b>102,756</b>	<b>345,304</b>	<b>448,060</b>
	<b>2009</b>					
	Feb.	Mar.	Apr.	May	Jun. <sup>P</sup>	Jul. <sup>P</sup>
<b>1. Public Sector</b>	<b>85,415</b>	<b>(142,543)</b>	<b>66,207</b>	<b>216,701</b>	<b>24,394</b>	<b>105,574</b>
i) Budgetary support	83,060	(142,279)	33,876	70,874	6,033	107,871
ii) Commodity operations	2,253	(269)	32,377	145,592	17,965	(2,480)
iii) Effect of Zakat fund etc.	102	5	(46)	236	396	182
<b>2. Credit to Non-Government Sector (A+B+C)</b>	<b>(23,969)</b>	<b>25,349</b>	<b>(28,552)</b>	<b>(32,105)</b>	<b>13,322</b>	<b>(65,249)</b>
(A) Credit to private Sector	(25,970)	(55,876)	(27,366)	(34,725)	4,922	(59,560)
i) Commercial Banks	(27,066)	(55,782)	(28,000)	(34,878)	2,828	(60,729)
ii) Specialized Banks	1,096	(94)	634	153	2,094	1,168
(B) Credit to Public Sector Enterprise (PSEs)	2,029	81,259	(1,195)	2,628	7,906	(5,693)
i) Autonomous Bodies	1,603	12,072	(938)	(1,228)	(324)	678
ii) Others	426	69,187	(258)	3,856	8,231	(6,371)
iii) PSEs Special Account-Debt Replacement with SBP	0	0	0	0	0	0
(C) Other Financial Institutions (SBP Credit to NBFIs)	(27)	(33)	9	(8)	494	4
<b>3. Counterpart Funds</b>	<b>0</b>	<b>0</b>	<b>0</b>	<b>0</b>	<b>0</b>	<b>0</b>
<b>4. Other Items (net)</b>	<b>2,138</b>	<b>45,685</b>	<b>(54,115)</b>	<b>25,268</b>	<b>46,035</b>	<b>(96,716)</b>
<b>5. Domestic Credit Expansion (+) /     Contraction (-) (1+2+3+4)</b>	<b>63,584</b>	<b>(71,508)</b>	<b>(16,460)</b>	<b>209,864</b>	<b>83,751</b>	<b>(56,392)</b>
<b>6. Foreign Assets (net)</b>	<b>(12,596)</b>	<b>96,079</b>	<b>(31,889)</b>	<b>15,972</b>	<b>70,679</b>	<b>(38,456)</b>
<b>7. Monetary Expansion ((5+6)</b>	<b>50,988</b>	<b>24,571</b>	<b>(48,350)</b>	<b>225,836</b>	<b>154,429</b>	<b>(94,848)</b>

## 2.6 Liabilities and Assets of State Bank of Pakistan Issue Department

(Million Rupees)

LAST SATURDAY/ LASTWORKING DAY	LIABILITIES			Total Liabilities / Assets	ASSETS				Rupee Coins
	Notes held in the Banking Department	Notes in Circulation	Total		Gold and Foreign Assets			Total	
					(1) Gold Coins and Bullion	(2) Approved Foreign Exchange	(3) Indian Notes		
2005	Jun.	145.6	705,720.1	<b>705,865.7</b>	53,870.0	484,308.4	593.0	<b>538,771.4</b>	2,961.2
	Dec.	156.6	769,617.5	<b>769,774.1</b>	53,870.0	426,373.5	593.0	<b>480,836.5</b>	2,469.6
2006	Jun.	139.3	784,235.9	<b>784,375.2</b>	76,317.3	567,347.6	562.6	<b>644,227.4</b>	2,865.5
	Dec.	140.9	917,808.9	<b>917,949.9</b>	76,317.3	561,728.7	562.6	<b>638,608.5</b>	2,640.0
2007	Jun.	135.6	893,292.8	<b>893,428.4</b>	81,277.1	697,851.6	638.2	<b>779,767.0</b>	3,012.3
	Dec.	187.7	1,076,328.6	<b>1,076,516.3</b>	99,127.4	699,199.5	638.2	<b>798,965.2</b>	2,730.4
2008	Jun.	160.7	1,050,148.2	<b>1,050,308.9</b>	122,618.6	465,771.5	638.2	<b>589,028.4</b>	2,722.5
	Dec.	205.8	1,225,792.0	<b>1,225,997.8</b>	133,004.4	147,248.2	683.7	<b>280,936.3</b>	2,576.5
2009	Jun.	129.2	1,231,652.3	<b>1,231,781.4</b>	163,592.7	343,492.3	683.7	<b>507,768.6</b>	2,460.1
2008	Jun.	160.7	1,050,148.2	<b>1,050,308.9</b>	122,618.6	465,771.5	638.2	<b>589,028.4</b>	2,722.5
	Jul.	110.5	1,065,302.6	<b>1,065,413.1</b>	130,970.6	420,659.6	683.7	<b>552,313.9</b>	2,691.8
	Aug.	161.1	1,070,325.3	<b>1,070,486.4</b>	131,336.6	367,347.6	683.7	<b>499,368.0</b>	2,665.0
	Sep.	194.4	1,139,853.1	<b>1,140,047.6</b>	131,336.6	228,808.9	683.7	<b>360,829.2</b>	2,626.2
	Oct.	110.8	1,185,624.3	<b>1,185,735.2</b>	143,111.6	189,572.8	683.7	<b>333,368.0</b>	2,613.8
	Nov.	138.7	1,188,079.1	<b>1,188,217.8</b>	133,004.4	212,797.2	683.7	<b>346,485.3</b>	2,596.5
	Dec.	205.8	1,225,792.0	<b>1,225,997.8</b>	133,004.4	147,248.2	683.7	<b>280,936.3</b>	2,576.5
2009	Jan.	150.9	1,186,535.4	<b>1,186,686.3</b>	150,374.5	200,811.4	683.7	<b>351,869.6</b>	2,564.9
	Feb.	186.5	1,190,890.9	<b>1,191,077.4</b>	157,507.4	177,027.5	683.7	<b>335,218.6</b>	2,556.0
	Mar.	143.1	1,188,523.9	<b>1,188,667.0</b>	157,507.4	284,646.7	683.7	<b>442,837.8</b>	2,545.7
	Apr.	113.3	1,183,141.3	<b>1,183,254.7</b>	152,802.5	235,377.7	683.7	<b>388,863.9</b>	2,533.3
	May	161.0	1,233,153.7	<b>1,233,314.7</b>	163,592.7	307,203.1	683.7	<b>471,479.4</b>	2,493.3
	Jun.	129.2	1,231,652.3	<b>1,231,781.4</b>	163,592.7	343,492.3	683.7	<b>507,768.6</b>	2,460.1

## 2.6 Liabilities and Assets of State Bank of Pakistan Issue Department

(Million Rupees)

LAST SATURDAY/ LASTWORKING DAY LAST SATURDAY/		A S S E T S							
		Domestic Assets			With Reserve Bank of India pending transfer to Pakistan				
		Govt. of Pakistan Securities	Internal Bills of Exchange & other Commercial Papers	Total	Gold and Bullion	Sterling Securities	Govt. of India Securities	Rupee Coin	Total
2005	Jun.	162,802.6	78.5	<b>165,842.3</b>	876.2	357.8	13.9	4.1	<b>1,252.0</b>
	Dec.	285,137.5	78.5	<b>287,685.7</b>	876.2	357.8	13.9	4.1	<b>1,252.0</b>
2006	Jun.	135,585.4	78.5	<b>138,529.4</b>	1,240.4	360.9	13.2	3.9	<b>1,618.4</b>
	Dec.	275,004.4	78.5	<b>277,722.9</b>	1,240.4	360.9	13.2	3.9	<b>1,618.4</b>
2007	Jun.	108,830.3	78.5	<b>111,921.1</b>	1,320.9	400.1	15.0	4.4	<b>1,740.3</b>
	Dec.	272,714.7	78.5	<b>275,523.6</b>	1,608.1	400.1	15.0	4.4	<b>2,027.5</b>
2008	Jun.	456,070.5	78.5	<b>458,871.9</b>	1,989.2	400.1	15.0	4.4	<b>2,408.6</b>
	Dec.	939,781.7	78.5	<b>942,436.7</b>	2,157.7	446.5	16.0	4.7	<b>2,624.9</b>
2009	Jun.	718,353.1	78.5	<b>720,891.7</b>	2,653.9	446.5	16.0	4.7	<b>3,121.1</b>
2008	Jun.	456,070.5	78.5	<b>458,871.9</b>	1,989.2	400.1	15.0	4.4	<b>2,408.6</b>
	Jul.	507,737.1	78.5	<b>510,507.4</b>	2,124.7	446.5	16.0	4.5	<b>2,591.9</b>
	Aug.	565,777.1	78.5	<b>568,520.6</b>	2,130.6	446.5	16.0	4.5	<b>2,597.8</b>
	Sep.	773,915.8	78.5	<b>776,620.6</b>	2,130.6	446.5	16.0	4.7	<b>2,597.8</b>
	Oct.	846,886.0	78.5	<b>849,578.3</b>	2,321.7	446.5	16.0	4.7	<b>2,788.9</b>
	Nov.	836,432.6	78.5	<b>839,107.6</b>	2,157.7	446.5	16.0	4.7	<b>2,624.9</b>
	Dec.	939,781.7	78.5	<b>942,436.7</b>	2,157.7	446.5	16.0	4.7	<b>2,624.9</b>
2009	Jan.	829,266.7	78.5	<b>831,910.1</b>	2,439.7	446.5	16.0	4.7	<b>2,906.7</b>
	Feb.	850,201.9	78.5	<b>852,836.4</b>	2,555.2	446.5	16.0	4.7	<b>3,022.4</b>
	Mar.	740,182.7	78.5	<b>742,806.9</b>	2,555.2	446.5	16.0	4.7	<b>3,022.4</b>
	Apr.	788,832.9	78.5	<b>791,444.7</b>	2,478.9	446.5	16.0	4.7	<b>2,946.1</b>
	May	756,142.4	78.5	<b>758,714.2</b>	2,653.9	446.5	16.0	4.7	<b>3,121.1</b>
	Jun.	718,353.1	78.5	<b>720,891.7</b>	2,653.9	446.5	16.0	4.7	<b>3,121.1</b>

1 Gold is valued at end financial year (June ) on the basis of closing London Market Rate.

Source: Finance Department SBP

2. Approved Foreign Exchanges includes SDR held with IMF w.e.f June2004

3. Receivable from Reserve Bank of India.



## 2.7 Liabilities and Assets of State Bank of Pakistan

### Banking Department

(Million Rupees)

LAST SATURDAY/ LASTWORKING DAY	L I A B I L I T I E S												
								D e p o s i t s					Total
	Capital Paid-up	Reserve Fund	Rural Credit Fund	Industrial Credit Fund	Export Credit Fund	Loans Guar- antee Fund	Housing Credit Fund	Federal Govt.	Provincial Govts.	Banks	Others		
2005	Jun.	100.0	5,414.5	2,600.0	1,600.0	1,500.0	900.0	4,700.0	47,286.1	45,632.0	196,302.3	273,550.2	<b>562,770.6</b>
	Dec.	100.0	15,414.5	2,600.0	1,600.0	1,500.0	900.0	4,700.0	86,850.0	58,127.1	207,749.7	273,412.8	<b>626,139.6</b>
2006	Jun.	100.0	15,414.5	2,600.0	1,600.0	1,500.0	900.0	4,700.0	69,952.5	66,644.6	207,574.3	273,897.5	<b>618,068.8</b>
	Dec.	100.0	34,556.5	2,600.0	1,600.0	1,500.0	900.0	4,700.0	49,197.5	50,380.5	264,356.0	272,486.9	<b>636,420.8</b>
2007	Jun.	100.0	55,838.8	2,600.0	1,600.0	1,500.0	900.0	4,700.0	72,131.9	62,565.7	305,168.6	273,718.3	<b>713,584.5</b>
	Dec.	100.0	64,978.6	2,600.0	1,600.0	1,500.0	900.0	4,700.0	34,481.4	22,104.5	256,759.3	277,267.5	<b>590,612.7</b>
2008	Jun.	100.0	64,978.6	2,600.0	1,600.0	1,500.0	900.0	4,700.0	65,642.1	29,571.1	328,435.3	333,480.1	<b>757,128.6</b>
	Dec.	100.0	64,988.5	2,600.0	1,600.0	1,500.0	900.0	4,700.0	15,545.6	45,371.8	255,499.8	602,580.5	<b>918,997.7</b>
2009	Jun.	100.0	161,429.0	2,600.0	1,600.0	1,500.0	900.0	4,700.0	34,341.1	18,515.6	265,596.9	694,870.8	<b>1,013,324.4</b>
2008	Jun.	100.0	64,978.6	2,600.0	1,600.0	1,500.0	900.0	4,700.0	65,642.1	29,571.1	328,435.3	333,480.1	<b>757,128.6</b>
	Jul.	100.0	64,988.5	2,600.0	1,600.0	1,500.0	900.0	4,700.0	14,089.5	33,326.2	353,382.0	342,552.2	<b>743,349.9</b>
	Aug.	100.0	64,988.5	2,600.0	1,600.0	1,500.0	900.0	4,700.0	127.0	63,714.4	357,093.1	359,800.2	<b>780,734.7</b>
	Sep.	100.0	64,988.5	2,600.0	1,600.0	1,500.0	900.0	4,700.0	103.0	25,809.3	377,147.3	363,451.2	<b>766,510.8</b>
	Oct.	100.0	64,988.5	2,600.0	1,600.0	1,500.0	900.0	4,700.0	13,098.8	42,243.8	263,633.2	368,374.3	<b>687,350.1</b>
	Nov.	100.0	64,988.5	2,600.0	1,600.0	1,500.0	900.0	4,700.0	76.9	70,261.9	242,611.1	601,034.2	<b>913,984.1</b>
	Dec.	100.0	64,988.5	2,600.0	1,600.0	1,500.0	900.0	4,700.0	15,545.6	45,371.8	255,499.8	602,580.5	<b>918,997.7</b>
2009	Jan.	100.0	161,429.0	2,600.0	1,600.0	1,500.0	900.0	4,700.0	62.7	78,008.7	246,081.1	636,537.1	<b>960,689.6</b>
	Feb.	100.0	161,429.0	2,600.0	1,600.0	1,500.0	900.0	4,700.0	4,788.1	75,768.6	242,741.9	635,592.1	<b>958,890.7</b>
	Mar.	100.0	161,429.0	2,600.0	1,600.0	1,500.0	900.0	4,700.0	14,252.7	56,047.6	250,542.5	637,701.7	<b>958,544.5</b>
	Apr.	100.0	161,429.0	2,600.0	1,600.0	1,500.0	900.0	4,700.0	25,629.2	51,125.7	235,947.1	673,416.3	<b>986,118.3</b>
	May	100.0	161,429.0	2,600.0	1,600.0	1,500.0	900.0	4,700.0	44,796.7	54,919.8	251,137.1	694,898.3	<b>1,045,75.9</b>
	Jun.	100.0	161,429.0	2,600.0	1,600.0	1,500.0	900.0	4,700.0	34,341.1	18,515.6	265,596.9	694,870.8	<b>1,013,324.4</b>

## 2.7 Liabilities and Assets of State Bank of Pakistan Banking Department

(Million Rupees)

LAST SATURDAY/ LAST WORKING DAY	LIABILITIES					Total Liabilities/ Assets	A S S E T S			
	Allocation of Special Drawing Rights	Bills Payable	Re- valuation Account	Other Liabi- lities	Notes and Coins <sup>1</sup>		Bills Purchased and Discounted			Total
							Internal		Export Sector	
2005	Jun.	1,526.0	1,099.7	51,646.6	54,792.1	<b>688,649.3</b>	145.6	3.6	33.4	<b>37.0</b>
	Dec.	1,526.0	118.5	51,646.6	87,784.8	<b>794,029.9</b>	156.6	3.6	33.4	<b>37.0</b>
2006	Jun.	1,526.0	472.7	74,406.9	183,199.2	<b>904,488.6</b>	139.3	3.6	33.4	<b>37.0</b>
	Dec.	1,526.0	152.8	74,406.9	112,684.2	<b>871,147.1</b>	140.9	3.6	33.4	<b>37.0</b>
2007	Jun.	1,526.0	571.9	79,440.9	176,548.6	<b>1,038,910.7</b>	135.6	3.6	33.4	<b>37.0</b>
	Dec.	1,526.0	493.5	97,408.6	124,938.3	<b>891,357.7</b>	187.7	3.6	33.4	<b>37.0</b>
2008	Jun.	1,526.0	1,335.1	121,280.9	285,918.0	<b>1,243,567.2</b>	160.7	3.6	33.4	<b>37.0</b>
	Dec.	1,526.0	199.3	131,835.1	307,338.0	<b>1,436,284.6</b>	205.8	3.6	33.4	<b>37.0</b>
2009	Jun.	1,526.0	349.0	162,919.7	285,621.0	<b>1,636,569.2</b>	129.2	3.6	33.4	<b>37.0</b>
2008	Jun.	1,526.0	1,335.1	121,280.9	285,918.0	<b>1,243,567.2</b>	160.7	3.6	33.4	<b>37.0</b>
	Jul.	1,526.0	159.4	129,768.3	229,537.7	<b>1,180,729.8</b>	110.5	3.6	33.4	<b>37.0</b>
	Aug.	1,526.0	210.1	130,140.4	252,803.8	<b>1,241,803.5</b>	161.1	3.6	33.4	<b>37.0</b>
	Sep.	1,526.0	182.9	130,140.4	255,436.4	<b>1,230,185.1</b>	194.4	3.6	33.4	<b>37.0</b>
	Oct.	1,526.0	200.9	142,106.3	267,049.6	<b>1,174,621.4</b>	110.8	3.6	33.4	<b>37.0</b>
	Nov.	1,526.0	262.8	131,835.1	302,487.9	<b>1,426,484.4</b>	138.7	3.6	33.4	<b>37.0</b>
	Dec.	1,526.0	199.3	131,835.1	307,338.0	<b>1,436,284.6</b>	205.8	3.6	33.4	<b>37.0</b>
2009	Jan.	1,526.0	152.7	149,487.0	219,629.9	<b>1,504,314.2</b>	150.9	3.6	33.4	<b>37.0</b>
	Feb.	1,526.0	371.1	156,735.7	260,791.1	<b>1,551,143.5</b>	186.5	3.6	33.4	<b>37.0</b>
	Mar.	1,526.0	696.0	156,735.7	264,064.9	<b>1,554,396.1</b>	143.1	3.6	33.4	<b>37.0</b>
	Apr.	1,526.0	218.8	151,954.5	249,655.8	<b>1,562,302.6</b>	113.3	3.6	33.4	<b>37.0</b>
	May	1,526.0	190.5	162,919.7	265,461.4	1,648,678.4	161.0	3.6	33.4	<b>37.0</b>
	Jun.	1,526.0	349.0	162,919.7	285,621.0	1,636,569.2	129.2	3.6	33.4	<b>37.0</b>

<sup>1</sup> Includes all coins of various denominations

(Contd.)

## 2.7 Liabilities and Assets of State Bank of Pakistan Banking Department

(Million Rupees)

LAST SATURDAY/ LASTWORKING DAY	A S S E T S								
	Balance			Loans and Advances to Scheduled Banks					Total (a)
	held outside Pakistan	SDR held with IMF	Govt. Debtor Balances	Agri-cultural Sector	Indus-trial Sector	Export Sector	Housing Sector	Others	
2005 Jun.	139,513.0	1,774.6	10,814.0	59,753.3	1,498.5	109,446.9	-	11,288.6	<b>181,987.3</b>
Dec.	167,964.8	1,370.3	14,503.1	63,627.6	3,066.9	106,386.3	-	13,102.5	<b>186,183.4</b>
2006 Jun.	121,824.0	1,088.6	16,404.3	62,194.7	7,297.3	107,982.2	-	16,104.3	<b>193,578.5</b>
Dec.	128,433.7	758.6	6,560.1	63,183.5	41,382.5	131,733.6	-	14,416.2	<b>250,715.8</b>
2007 Jun.	152,719.3	418.5	10,820.4	62,228.2	42,149.7	134,621.3	-	14,420.1	<b>253,419.3</b>
Dec.	151,435.5	314.0	23,628.8	57,776.5	40,386.3	100,060.1	-	14,232.1	<b>212,455.0</b>
2008 Jun.	143,807.9	3,349.9	23,141.4	49,777.3	39,465.3	100,963.9	-	14,233.9	<b>204,440.4</b>
Dec.	410,477.0	1,889.2	24,012.9	58,229.7	36,433.2	154,529.6	-	17,697.8	<b>266,890.4</b>
2009 Jun.	405,748.7	6,342.8	80,449.5	58,230.5	37,993.8	176,730.4	-	14,049.7	<b>287,004.4</b>
2008 Jun.	143,807.9	3,349.9	23,141.4	49,777.3	39,465.3	100,963.9	-	14,233.9	<b>204,440.4</b>
Jul.	161,285.3	3,249.0	24,468.8	57,778.0	38,579.5	98,860.2	-	14,235.8	<b>209,453.5</b>
Aug.	132,617.8	3,312.5	13,547.0	57,778.0	38,077.5	68,059.2	-	14,235.8	<b>178,150.5</b>
Sep.	198,540.1	3,420.0	26,252.4	57,778.0	37,721.2	99,211.3	-	14,047.8	<b>208,758.9</b>
Oct.	170,628.7	3,360.7	13,457.5	57,778.3	36,406.2	103,092.5	-	14,047.8	<b>211,324.9</b>
Nov.	310,480.7	1,826.0	12,935.1	57,778.0	36,507.1	134,282.1	-	14,047.8	<b>242,615.0</b>
Dec.	410,477.0	1,889.2	24,012.9	58,229.7	36,433.2	154,529.6	-	17,697.8	<b>266,890.4</b>
2009 Jan.	392,727.2	1,596.4	14,759.2	58,230.5	35,612.5	159,186.2	-	16,049.7	<b>269,078.8</b>
Feb.	415,706.4	742.2	17,010.4	58,230.5	35,893.3	158,273.7	-	14,049.7	<b>266,447.2</b>
Mar.	308,598.7	761.7	29,209.2	58,230.5	36,081.4	162,121.1	-	14,049.7	<b>270,482.6</b>
Apr.	452,794.4	489.1	30,818.0	58,230.5	36,756.4	173,581.6	-	14,049.7	<b>282,618.1</b>
May	408,710.8	6,295.2	29,517.4	58,230.5	37,582.2	174,763.8	-	14,049.7	<b>284,626.2</b>
Jun.	405,748.7	6,342.8	80,449.5	58,230.5	37,993.8	176,730.4	-	14,049.7	<b>287,004.4</b>

## 2.7 Liabilities and Assets of State Bank of Pakistan

### Banking Department

(Concl'd.)  
(Million Rupees)

LAST SATURDAY/ LAST WORKING DAY	A S S E T S											
	Loans and Advances to Non-Bank Financial Institutions				Other Loans  And Advances (a+b)	I n v e s t m e n t s					Other Assets	
	Indus- trial Sector	Housing Sector	Others	Total (b)		Sche- duled Banks	Non-Bank Financial Institutions	Govt. Securities	Others	Total		
2005	Jun.	595.0	11,242.3	3,416.7	<b>15,254.0</b>	<b>197,241.4</b>	28,273.8	1,673.4	168,392.0	933.5	<b>199,272.6</b>	139,850.8
	Dec.	358.3	11,242.3	2,141.7	<b>13,742.3</b>	<b>199,925.7</b>	28,273.8	1,673.4	249,452.0	890.9	<b>280,290.1</b>	129,782.4
2006	Jun.	831.7	11,242.3	2,141.7	<b>14,215.7</b>	<b>207,794.2</b>	24,664.3	1,673.4	380,997.3	1,043.2	<b>408,378.1</b>	148,823.1
	Dec.	2,832.0	11,242.3	2,071.7	<b>16,146.0</b>	<b>266,861.8</b>	25,104.3	1,673.4	292,215.7	1,029.5	<b>320,022.9</b>	148,332.1
2007	Jun.	2,831.3	11,242.3	-	<b>14,073.6</b>	<b>267,492.9</b>	18,058.5	2,113.4	351,843.9	1,051.0	<b>373,066.8</b>	234,220.1
	Dec.	2,784.4	11,242.3	-	<b>14,026.7</b>	<b>226,481.7</b>	15,568.9	3,313.4	299,369.8	1,126.0	<b>319,378.0</b>	169,895.0
2008	Jun.	1,409.2	11,242.3	-	<b>12,651.5</b>	<b>217,091.9</b>	15,568.7	3,813.4	586,497.2	1,049.5	<b>606,928.8</b>	249,049.6
	Dec.	1,324.2	11,242.3	-	<b>12,566.5</b>	<b>279,456.9</b>	16,068.7	3,813.4	430,108.0	1,082.0	<b>451,072.0</b>	269,133.8
2009	Jun.	1,240.0	11,242.3	-	<b>12,482.3</b>	<b>299,486.7</b>	16,066.2	3,813.4	481,448.1	1,068.4	<b>502,396.1</b>	341,979.2
2008	Jun.	1,409.2	11,242.3	-	<b>12,651.5</b>	<b>217,091.9</b>	15,568.7	3,813.4	586,497.2	1,049.5	<b>606,928.8</b>	249,049.6
	Jul.	1,407.8	11,242.3	-	<b>12,650.1</b>	<b>222,103.6</b>	15,568.7	3,813.4	571,732.0	1,068.4	<b>592,182.4</b>	177,293.1
	Aug.	1,404.8	11,242.3	-	<b>12,647.1</b>	<b>190,797.6</b>	15,568.7	3,813.4	661,618.9	1,068.4	<b>682,069.3</b>	219,261.2
	Sep.	1,395.8	11,242.3	-	<b>12,638.1</b>	<b>221,396.4</b>	15,568.7	3,813.4	514,862.3	1,068.4	<b>535,312.7</b>	245,031.6
	Oct.	1,347.5	11,242.3	-	<b>12,589.8</b>	<b>223,914.7</b>	15,568.7	3,813.4	488,524.7	1,082.0	<b>508,988.7</b>	254,123.5
	Nov.	1,318.8	11,242.3	-	<b>12,561.1</b>	<b>255,176.1</b>	16,068.7	3,813.4	601,460.1	1,082.0	<b>622,424.1</b>	223,466.6
	Dec.	1,324.2	11,242.3	-	<b>12,566.5</b>	<b>279,456.9</b>	16,068.7	3,813.4	430,108.0	1,082.0	<b>451,072.0</b>	269,133.8
2009	Jan.	1,286.4	11,242.2	-	<b>12,528.7</b>	<b>281,607.5</b>	16,068.0	3,813.4	514,087.4	1,082.0	<b>535,050.7</b>	278,385.2
	Feb.	1,259.0	11,242.3	-	<b>12,501.3</b>	<b>278,948.5</b>	16,067.0	3,813.4	536,729.0	1,082.0	<b>557,691.3</b>	280,821.3
	Mar.	1,254.5	11,242.3	-	<b>12,496.8</b>	<b>282,979.4</b>	16,067.0	3,813.4	608,297.9	1,068.4	<b>629,246.6</b>	303,420.4
	Apr.	1,234.6	11,242.3	-	<b>12,476.9</b>	<b>295,095.0</b>	16,067.0	3,813.4	386,231.9	1,068.3	<b>407,180.6</b>	375,775.1
	May	1,226.5	11,242.3	-	<b>12,468.8</b>	<b>297,095.0</b>	16,067.0	3,813.4	497,064.1	1,068.4	<b>518,012.9</b>	388,848.9
	Jun.	1,240.0	11,242.3	-	<b>12,482.3</b>	<b>299,486.7</b>	16,066.2	3,813.4	481,448.1	1,068.4	<b>502,396.1</b>	341,979.2

Source: Finance Department SBP

## 2.8 Scheduled Bank's Consolidated Position

### Based on weekly position Liabilities & Assets (All Banks)

(Million Rupees)

FINANCIAL POSITION	2007		2008					
	Jun.	Dec.	Jun.	Dec.	Aug.	Sep.	Oct.	Nov.
<b>ASSETS</b>								
Cash & Balances with Treasury Banks	397,352	343,718	418,933	359,285	437,760	466,893	350,217	346,365
Balances with other Banks	200,104	134,651	175,322	163,284	152,502	159,102	143,971	160,461
Lending to Financial Institutions	269,120	213,872	222,891	165,985	202,109	180,911	190,202	221,982
Investments - Net	1,115,913	1,210,920	1,007,529	980,984	1,030,846	930,875	921,043	929,016
Advances – Net of Provision	2,350,810	2,505,900	2,759,886	2,928,896	2,707,918	2,831,945	2,892,673	2,920,045
Gross Advances	2,484,495	2,651,173	2,943,319	3,141,028	2,899,138	3,027,122	3,092,451	3,131,312
Less: Provision for Non- Performing Advances	133,686	145,272	183,433	212,132	191,220	195,177	199,777	211,267
Operating Fixed Assets	127,031	146,135	202,262	222,072	209,059	211,751	213,577	218,119
Deferred Tax Assets	8,144	10,849	17,696	23,922	21,132	20,999	20,986	23,463
Other Assets	233,167	262,530	269,879	293,211	314,973	305,841	285,827	307,457
<b>TOTAL ASSETS</b>	<b>4,701,641</b>	<b>4,828,576</b>	<b>5,074,397</b>	<b>5,137,638</b>	<b>5,076,298</b>	<b>5,108,316</b>	<b>5,018,496</b>	<b>5,126,908</b>
<b>LIABILITIES</b>								
Bills Payable	56,992	69,242	64,752	64,580	76,053	70,969	65,839	61,605
Borrowings	497,065	439,335	389,585	426,065	377,992	434,061	424,428	446,815
Deposits and other Accounts	3,460,811	3,565,537	3,832,454	3,801,411	3,788,611	3,781,524	3,681,110	3,756,126
Sub-ordinated Loans	27,488	27,171	41,169	38,895	40,892	40,975	41,143	41,006
Liabilities Against Assets Subject to Finance Lease	1,068	886	711	522	637	606	597	535
Deferred Tax Liabilities	8,700	9,921	13,568	9,350	12,906	12,336	11,736	11,023
Other Liabilities	165,221	175,317	184,355	218,287	213,818	211,326	225,023	230,313
<b>TOTAL LIABILITIES</b>	<b>4,217,345</b>	<b>4,287,409</b>	<b>4,526,592</b>	<b>4,559,111</b>	<b>4,510,909</b>	<b>4,551,798</b>	<b>4,449,878</b>	<b>4,547,422</b>
<b>NET ASSETS</b>	<b>484,296</b>	<b>541,167</b>	<b>547,805</b>	<b>578,527</b>	<b>565,389</b>	<b>556,518</b>	<b>568,618</b>	<b>579,486</b>
<b>REPRESENTED BY:</b>								
Paid up Capital / Head Office Capital Account	205,895	228,874	253,859	282,579	266,394	266,394	270,536	278,516
Reserves	129,050	108,921	127,816	142,935	136,219	136,258	136,676	140,287
Unappropriated / Unremitted Profit	68,707	115,538	92,790	109,957	109,327	100,569	108,158	111,708
Surplus/ (Deficit) On Revaluation of Assets	80,645	87,835	73,339	43,057	53,449	53,298	53,248	48,975
<b>TOTAL</b>	<b>484,296</b>	<b>541,167</b>	<b>547,805</b>	<b>578,527</b>	<b>565,389</b>	<b>556,518</b>	<b>568,618</b>	<b>579,486</b>

Format of weekly statement of position has been redesigned from the month of July 05.

## 2.8 Scheduled Bank's Consolidated Position

### Based on weekly position Liabilities & Assets (All Banks)

(Million Rupees)

FINANCIAL POSITION	2008	2009						
	Dec.	Jan.	Feb.	Mar.	Apr.	May	Jun.	Jul.
<b>ASSETS</b>								
Cash & Balances with Treasury Banks	359,285	340,125	338,064	344,648	327,668	361,323	371,373	365,879
Balances with other Banks	163,284	176,511	178,226	177,151	177,556	180,739	187,522	200,819
Lending to Financial Institutions	165,985	201,350	209,263	180,736	157,339	156,551	210,624	207,225
Investments - Net	980,984	1,030,607	1,094,731	1,148,225	1,264,779	1,290,857	1,348,807	1,375,253
Advances – Net of Provision	2,928,896	2,914,845	2,884,694	2,829,074	2,814,947	2,929,882	2,916,501	2,892,128
Gross Advances	3,141,028	3,127,435	3,099,980	3,061,965	3,053,171	3,174,151	3,168,566	3,147,848
Less: Provision for Non-Performing Advances	212,132	212,590	215,286	232,891	238,224	244,269	252,065	255,720
Operating Fixed Assets	222,072	222,168	222,375	225,015	225,065	226,017	227,177	229,504
Deferred Tax Assets	23,922	29,032	29,133	37,763	40,134	38,872	46,983	46,361
Other Assets	293,211	298,888	321,297	321,414	282,801	300,808	286,377	291,572
<b>TOTAL ASSETS</b>	<b>5,137,638</b>	<b>5,213,526</b>	<b>5,277,783</b>	<b>5,264,026</b>	<b>5,290,290</b>	<b>5,485,049</b>	<b>5,595,364</b>	<b>5,608,741</b>
<b>LIABILITIES</b>								
Bills Payable	64,580	58,134	59,501	56,826	55,716	58,514	65,623	59,554
Borrowings	426,065	442,365	433,501	446,571	468,084	481,562	485,299	478,439
Deposits and other Accounts	3,801,411	3,852,605	3,897,208	3,874,550	3,874,318	4,039,870	4,120,087	4,136,735
Sub-ordinated Loans	38,895	38,934	38,978	39,003	39,003	39,034	41,048	40,950
Liabilities Against Assets Subject to Finance Lease	522	494	473	472	449	380	161	156
Deferred Tax Liabilities	9,350	9,944	9,960	7,506	7,173	6,589	6,360	235,371
Other Liabilities	218,287	215,060	223,206	234,454	230,821	245,898	238,895	6,451
<b>TOTAL LIABILITIES</b>	<b>4,559,111</b>	<b>4,617,535</b>	<b>4,662,827</b>	<b>4,659,382</b>	<b>4,675,565</b>	<b>4,871,847</b>	<b>4,957,473</b>	<b>4,957,655</b>
<b>NET ASSETS</b>	<b>578,527</b>	<b>595,990</b>	<b>614,956</b>	<b>604,644</b>	<b>614,725</b>	<b>613,202</b>	<b>637,890</b>	<b>651,085</b>
<b>REPRESENTED BY:</b>								
Paid up Capital / Head Office Capital Account	282,579	294,531	294,964	299,039	308,060	313,694	317,880	317,891
Reserves	142,935	146,488	147,236	145,972	148,366	149,610	159,561	152,190
Unappropriated / Unremitted Profit	109,957	120,166	122,591	99,947	94,881	89,726	93,214	108,727
Surplus/ (Deficit) On Revaluation of Assets	43,057	34,805	50,165	59,685	63,417	60,173	67,235	72,278
<b>TOTAL</b>	<b>578,527</b>	<b>595,990</b>	<b>614,956</b>	<b>604,644</b>	<b>614,725</b>	<b>613,202</b>	<b>637,890</b>	<b>578,808</b>

Source: Off-Site Supervision & Enforcement Department SBP

## 2.9 Scheduled Banks' Liquidity Position

### All Banks<sup>1</sup>

(Million Rupees)

LAST SATURDAY		LIQUID LIABILITIES IN PAKISTAN			LIQUID ASSETS MAINTAINED IN PAKISTAN			
		Demand Liabilities	Time Liabilities	Total	Cash in Pakistan	Balance With SBP	Balance With Agents of SBP	Unencumbered Approved Securities <sup>2</sup>
2005	Jun.	1,131,465	1,138,439	<b>2,269,904</b>	42,461	120,668	5,621	529,035
	Dec.	1,289,884	1,244,768	<b>2,534,652</b>	50,145	146,530	15,173	515,681
2006	Jun.	1,281,332	1,421,594	<b>2,702,926</b>	55,454	159,210	7,529	567,416
	Dec.	2,314,909	693,303	<b>3,008,212</b>	61,755	215,476	16,473	567,984
2007	Jun.	2,837,195	566,181	<b>3,403,376</b>	76,609	253,059	24,369	821,057
	Dec.	3,009,848	476,569	<b>3,486,417</b>	85,334	223,426	11,605	812,343
2008	Jun.	3,163,881	610,127	<b>3,774,008</b>	75,314	304,179	17,121	761,174
	Dec.	3,100,733	647,571	<b>3,748,304</b>	92,704	183,106	13,033	738,076
2009	Jun.	3,331,056	771,803	<b>4,102,859</b>	79,095	187,377	17,835	1,006,341
2008	Jun.	3,163,881	610,127	<b>3,774,008</b>	75,314	304,179	17,121	761,174
	Jul.	3,051,562	605,236	<b>3,656,798</b>	72,171	290,295	10,064	789,307
	Aug.	3,093,817	613,923	<b>3,707,740</b>	75,271	285,137	11,599	759,058
	Sep.	3,045,834	625,490	<b>3,671,324</b>	81,593	310,176	10,563	640,698
	Oct.	2,955,821	637,489	<b>3,593,310</b>	79,294	186,692	13,994	644,100
	Nov.	3,050,910	649,791	<b>3,700,701</b>	93,518	175,452	12,846	671,941
	Dec.	3,100,733	647,571	<b>3,748,304</b>	92,704	183,106	13,033	738,076
2009	Jan.	3,118,464	663,633	<b>3,782,097</b>	78,909	170,943	14,599	803,400
	Feb.	3,151,981	673,190	<b>3,825,171</b>	78,656	168,695	14,017	880,859
	Mar.	3,123,387	685,061	<b>3,808,448</b>	82,452	174,097	12,250	892,751
	Apr.	3,132,558	735,762	<b>3,868,320</b>	79,549	162,886	11,363	891,337
	May	3,287,838	733,958	<b>4,021,796</b>	80,595	174,914	18,731	904,320
	Jun.	3,331,056	771,803	<b>4,102,859</b>	79,095	187,377	17,835	1,006,341

## 2.9 Scheduled Banks' Liquidity Position

### All Banks<sup>1</sup>

(Million Rupees)

LAST SATURDAY	LIQUID ASSETS MAINTAINED IN PAKISTAN						Minimum of Assets required to be held under Section 29 of the Banking Companies Ordinance	Excess of Assets being held over the minimum required under Section 29 of the Banking Companies Ordinance
	Foreign Banks Deposits with SBP under section 13(3) of the Banking Companies Ordinance			Share Capital M F B	Total			
	Cash	Unencumbered Approved Securities <sup>2</sup>	Foreign Currency					
2005 Jun.	60	4,239	15,919	1,675	<b>719,678</b>	450,694	268,984	
Dec.	156	4,020	17,660	1,705	<b>751,070</b>	503,471	247,599	
2006 Jun.	156	4,014	19,172	1,705	<b>814,656</b>	537,716	276,940	
Dec.	156	3,981	13,524	1,685	<b>881,034</b>	719,116	161,918	
2007 Jun.	0	727	13,397	1,655	<b>1,190,873</b>	821,095	369,778	
Dec.	0	0	10,867	1,658	<b>1,145,233</b>	828,870	316,363	
2008 Jun.	0	0	12,651	1,658	<b>1,172,097</b>	990,894	181,203	
Dec.	0	5,018	18,512	1,658	<b>1,052,107</b>	735,487	316,620	
2009 Jun.	0	14,547	19,041	1,658	<b>1,325,894</b>	789,135	536,759	
2008 Jun.	0	0	12,651	1,658	<b>1,172,097</b>	990,894	181,203	
Jul.	0	0	12,702	1,658	<b>1,176,197</b>	964,746	211,451	
Aug.	0	0	12,702	1,658	<b>1,145,425</b>	971,664	173,761	
Sep.	0	0	12,702	1,658	<b>1,057,390</b>	959,998	97,392	
Oct.	0	0	15,599	2,202	<b>941,881</b>	739,096	202,786	
Nov.	0	5,018	16,344	1,976	<b>977,095</b>	724,113	252,982	
Dec.	0	5,018	18,512	1,658	<b>1,052,107</b>	735,487	316,620	
2009 Jan.	0	5,018	19,224	1,658	<b>1,093,751</b>	739,445	354,306	
Feb.	0	5,018	19,224	1,658	<b>1,168,127</b>	747,250	420,877	
Mar.	0	5,018	19,224	1,658	<b>1,187,450</b>	740,430	447,020	
Apr.	0	5,018	18,988	1,658	<b>1,170,799</b>	742,414	428,385	
May	0	13,664	19,041	1,658	<b>1,212,923</b>	778,647	434,276	
Jun.	0	14,547	19,041	1,658	<b>1,325,894</b>	789,135	536,759	

1 Excluding Indian Banks

Source: Off-Site Supervision & Enforcement Department SBP

2 Valued at a price not exceeding current market price

Note : Figures of Demand and Time Liabilities of Scheduled Banks shown in this table may not tally with the corresponding provisional figures appearing in the table 2.7

MFB : Macro Finance Bank ( Khushali Bank )



## 2.10 NBFCs Consolidated Financial Position

(Million Rupees)

ASSETS/ LIABILITIES	Sep-08 <sup>P</sup>			Dec-08 <sup>P</sup>		
	DFIs	NBFCs	Total	DFIs	NBFCs	Total
<b>1. Currency and Deposits</b>	<b>13,555</b>	<b>90,799</b>	<b>104,354</b>	<b>14,442</b>	<b>72,731</b>	<b>87,173</b>
a. Currency	1	656	657	1	845	846
b. Transferable Deposits	2,033	51,656	53,688	6,684	45,670	52,354
c. Restricted Deposits	122	8,484	8,605	129	5,655	5,784
d. Other Deposits	11,399	30,003	41,403	7,629	20,561	28,190
<b>2. Investment in securities other than shares</b>	<b>22,156</b>	<b>62,071</b>	<b>84,227</b>	<b>23,358</b>	<b>57,277</b>	<b>80,635</b>
a. Short-term	8,853	7,935	16,787	8,848	6,301	15,150
b. Long-term	13,303	54,136	67,440	14,510	50,976	65,485
<b>3. Loans extended (Advances)</b>	<b>42,115</b>	<b>116,790</b>	<b>158,905</b>	<b>44,582</b>	<b>110,021</b>	<b>154,603</b>
a. Short-term	11,481	33,145	44,625	12,802	30,561	43,363
b. Long-term	30,635	83,645	114,280	31,780	79,460	111,240
<b>4. Investment in shares</b>	<b>15,638</b>	<b>141,038</b>	<b>156,677</b>	<b>11,167</b>	<b>109,686</b>	<b>120,853</b>
a. Quoted	13,135	137,789	150,924	9,272	105,568	114,841
b. Non quoted	2,504	3,249	5,753	1,895	4,117	6,012
<b>5. Insurance Technical Reserve</b>	-	-	-	-	-	-
a. Life	-	-	-	-	-	-
b. Non-life	-	-	-	-	-	-
<b>6. Financial Derivatives</b>	-	<b>7</b>	<b>7</b>	-	<b>21</b>	<b>21</b>
<b>7. Other accounts receivable</b>	<b>3,485</b>	<b>26,485</b>	<b>29,971</b>	<b>5,872</b>	<b>44,716</b>	<b>50,588</b>
<b>8. Non-financial assets</b>	<b>3,290</b>	<b>12,433</b>	<b>15,723</b>	<b>3,396</b>	<b>12,699</b>	<b>16,096</b>
a. Produced assets	3,157	8,579	11,736	3,259	8,857	12,116
i. Fixed assets	3,147	7,857	11,004	3,247	8,147	11,394
ii. Inventories	-	200	200	-	202	202
iii. Valuables	-	-	-	-	-	-
iv. Other produced assets	10	522	532	11	508	519
b. Non-produced assets	133	3,855	3,988	137	3,842	3,980
i. Land	10	925	935	10	999	1,009
ii. Other-non-produced assets	123	2,930	3,053	127	2,843	2,970
<b>Total Assets/ Liabilities</b>	<b>100,240</b>	<b>449,624</b>	<b>549,864</b>	<b>102,817</b>	<b>407,151</b>	<b>509,968</b>
<b>1. Deposits</b>	<b>7,965</b>	<b>27,785</b>	<b>35,749</b>	<b>7,234</b>	<b>22,775</b>	<b>30,008</b>
a. Restricted deposits	200	9,349	9,550	183	5,545	5,729
b. Other deposits	7,764	18,436	26,200	7,051	17,229	24,280
<b>2. Securities other than shares (bonds/debentures etc)</b>	<b>2,650</b>	<b>16,563</b>	<b>19,213</b>	<b>2,650</b>	<b>23,891</b>	<b>26,541</b>
a. Short-term	-	2,760	2,760	-	2,875	2,875
b. long-term	2,650	13,803	16,453	2,650	21,016	23,666
<b>3. Loans (Borrowings)</b>	<b>38,539</b>	<b>55,695</b>	<b>94,233</b>	<b>35,139</b>	<b>58,459</b>	<b>93,598</b>
a. Short-term	16,363	27,293	43,657	15,085	30,311	45,396
b. Long-term	22,176	28,401	50,577	20,053	28,149	48,202
<b>4. Financial Derivatives</b>	-	-	-	-	-	-
<b>5. Other accounts payable</b>	<b>8,822</b>	<b>44,219</b>	<b>53,042</b>	<b>7,499</b>	<b>48,613</b>	<b>56,112</b>
<b>6. Shares and other equity</b>	<b>42,265</b>	<b>305,362</b>	<b>347,626</b>	<b>50,295</b>	<b>253,413</b>	<b>303,708</b>
a. Quoted	2,000	172,861	174,861	3,229	149,779	153,008
b. Non quoted	32,293	64,490	96,783	39,521	55,450	94,972
c. Retained earnings	(5,181)	47,370	42,189	(2,081)	45,652	43,571
d. Current year result	4,934	(13,360)	(8,426)	2,999	(28,774)	(25,774)
e. General and special reserves	9,199	34,663	43,862	9,112	33,432	42,545
f. Valuation adjustments	(980)	(663)	(1,643)	(2,486)	(2,127)	(4,613)

## 2.10 NBFCs Consolidated Financial Position

(Million Rupees)

ASSETS/ LIABILITIES	Mar-09 <sup>P</sup>			Jun-09 <sup>P</sup>		
	DFIs	NBFCs	Total	DFIs	NBFCs	Total
<b>1. Currency and Deposits</b>	<b>10,777</b>	<b>59,809</b>	<b>70,587</b>	<b>13,278</b>	<b>59,665</b>	<b>72,944</b>
a. Currency	1	1,014	1,015	1	240	241
b. Transferable Deposits	5,302	39,545	44,847	3,939	41,360	45,299
c. Restricted Deposits	132	3,383	3,515	130	231	361
d. Other Deposits	5,343	15,867	21,210	9,208	17,834	27,042
<b>2. Investment in securities other than shares</b>	<b>31,103</b>	<b>50,237</b>	<b>81,340</b>	<b>38,567</b>	<b>54,982</b>	<b>93,549</b>
a. Short-term	14,138	7,661	21,799	20,512	12,570	33,082
b. Long-term	16,966	42,576	59,542	18,055	42,412	60,467
<b>3. Loans extended (Advances)</b>	<b>46,862</b>	<b>90,278</b>	<b>137,141</b>	<b>50,690</b>	<b>93,348</b>	<b>144,037</b>
a. Short-term	13,254	19,965	33,219	13,791	24,972	38,763
b. Long-term	33,608	70,313	103,921	36,899	68,376	105,275
<b>4. Investment in shares</b>	<b>11,754</b>	<b>121,975</b>	<b>133,730</b>	<b>13,742</b>	<b>126,654</b>	<b>140,396</b>
a. Quoted	9,602	106,314	115,916	11,562	107,994	119,557
b. Non quoted	2,153	15,661	17,814	2,179	18,660	20,839
<b>5. Insurance Technical Reserve</b>	<b>0</b>	<b>0</b>	<b>0</b>	<b>0</b>	<b>2</b>	<b>2</b>
a. Life	0	0	0	0	1	1
b. Non-life	0	0	0	0	1	1
<b>6. Financial Derivatives</b>	<b>0</b>	<b>74</b>	<b>74</b>	<b>0</b>	<b>0</b>	<b>0</b>
<b>7. Other accounts receivable</b>	<b>5,932</b>	<b>31,855</b>	<b>37,787</b>	<b>3,696</b>	<b>33,249</b>	<b>36,945</b>
<b>8. Non-financial assets</b>	<b>3,348</b>	<b>11,953</b>	<b>15,300</b>	<b>3,372</b>	<b>13,243</b>	<b>16,616</b>
a. Produced assets	<b>3,337</b>	<b>8,663</b>	<b>12,000</b>	<b>3,362</b>	<b>12,404</b>	<b>15,766</b>
i. Fixed assets	3,166	7,663	10,829	3,249	8,689	11,938
ii. Inventories	0	142	142	0	260	260
iii. Valuables	0	0	0	0	4	4
iv. Other produced assets	171	858	1,030	113	3,451	3,564
b. Non-produced assets	10	3,290	3,300	10	840	850
i. Land	10	513	523	10	72	82
ii. Other-non-produced assets	0	2,777	2,777	0	768	768
<b>Total Assets/ Liabilities</b>	<b>109,777</b>	<b>366,182</b>	<b>475,959</b>	<b>123,345</b>	<b>381,143</b>	<b>504,488</b>
<b>1. Deposits</b>	<b>10,841</b>	<b>21,230</b>	<b>32,071</b>	<b>14,648</b>	<b>27,671</b>	<b>42,318</b>
a. Restricted deposits	189	4,018	4,207	183	3,352	3,535
b. Other deposits	10,652	17,212	27,864	14,465	24,318	38,783
<b>2. Securities other than shares (bonds/debentures etc)</b>	<b>1,550</b>	<b>14,907</b>	<b>16,457</b>	<b>1,550</b>	<b>15,529</b>	<b>17,079</b>
a. Short-term	0	2,046	2,046	0	2,981	2,981
b. long-term	1,550	12,861	14,411	1,550	12,549	14,099
<b>3. Loans (Borrowings)</b>	<b>34,870</b>	<b>52,350</b>	<b>87,220</b>	<b>44,533</b>	<b>60,252</b>	<b>104,786</b>
a. Short-term	15,232	18,776	34,008	24,888	21,441	46,329
b. Long-term	19,638	33,574	53,212	19,645	38,811	58,456
<b>4. Financial Derivatives</b>	<b>0</b>	<b>0</b>	<b>0</b>	<b>0</b>	<b>0</b>	<b>0</b>
<b>5. Other accounts payable</b>	<b>11,448</b>	<b>44,815</b>	<b>56,263</b>	<b>11,648</b>	<b>47,707</b>	<b>59,355</b>
<b>6. Shares and other equity</b>	<b>51,067</b>	<b>232,880</b>	<b>283,948</b>	<b>50,966</b>	<b>229,984</b>	<b>280,950</b>
a. Quoted	0	153,708	153,708	0	148,753	148,753
b. Non quoted	42,750	47,518	90,268	42,750	45,488	88,238
c. Retained earnings	2,573	18,810	21,383	2,633	18,103	20,736
d. Current year result	(49)	(24,074)	(24,123)	(348)	(19,176)	(19,525)
e. General and special reserves	5,156	37,632	42,788	5,319	37,528	42,847
f. Valuation adjustments	638	(715)	(77)	611	(711)	(100)

NBFCs Non Bank Financial Companies  
DFIs Development Finance Institutions

## 2.11 Classification of Deposits with NBFCs

(Million Rupees)

SECTOR	Mar-09 <sup>P</sup>			Jun-09 <sup>P</sup>		
	Depository	Non-Depository	Total	Depository	Non-Depository	Total
<b>1 Non-financial Corporations</b>	<b>13,853</b>	<b>963</b>	<b>14,816</b>	<b>18,791</b>	<b>468</b>	<b>19,259</b>
i Public	3,609	106	3,714	4,109	93	4,202
ii Private	10,244	858	11,102	14,682	376	15,058
<b>2 Financial Corporations</b>	<b>9,626</b>	<b>596</b>	<b>10,222</b>	<b>10,011</b>	<b>114</b>	<b>10,125</b>
i Central Bank	0	0	0	-	-	-
ii Deposit money institutions	4,635	596	5,231	2,627	110	2,737
ii Other deposit accepting institutions	1,991	0	1,991	2,117	-	2,117
iv Financial intermediaries	1,388	0	1,388	3,067	-	3,067
v Financial auxiliaries	148	0	148	301	4	305
vi Insurance and pension funds	1,463	0	1,463	1,899	-	1,899
<b>3 Central Government</b>	<b>1,887</b>	<b>0</b>	<b>1,887</b>	<b>1,661</b>	<b>-</b>	<b>1,661</b>
<b>4 Provincial Governments</b>	<b>7</b>	<b>0</b>	<b>7</b>	<b>695</b>	<b>-</b>	<b>695</b>
<b>5 Local Governments</b>	<b>0</b>	<b>0</b>	<b>0</b>	<b>-</b>	<b>-</b>	<b>-</b>
<b>6 Household</b>	<b>4,945</b>	<b>0</b>	<b>4,945</b>	<b>9,938</b>	<b>386</b>	<b>10,324</b>
<b>7 Non-profit Institutions (NPIs) Serving Households</b>	<b>9</b>	<b>0</b>	<b>9</b>	<b>76</b>	<b>-</b>	<b>76</b>
<b>8 Non-residents</b>	<b>5</b>	<b>0</b>	<b>5</b>	<b>5</b>	<b>-</b>	<b>5</b>
<b>9 Foreign Currency</b>	<b>181</b>	<b>0</b>	<b>181</b>	<b>173</b>	<b>0</b>	<b>173</b>
<b>Total</b>	<b>30,512</b>	<b>1,559</b>	<b>32,071</b>	<b>41,350</b>	<b>969</b>	<b>42,318</b>

## 2.12 Classification of NBFC's Loans Extended(Advances)

(Million Rupees)

SECTOR	Mar-09 <sup>P</sup>			Jun-09 <sup>P</sup>		
	Depository	Non-Depository	Total	Depository	Non-Depository	Total
<b>1 Non-financial corporations</b>	<b>71,129</b>	<b>7,334</b>	<b>78,462</b>	<b>72,001</b>	<b>6,554</b>	<b>78,554</b>
i Public	1,409	301	1,709	1,607	185	1,793
ii Private	69,720	7,033	76,753	70,394	6,368	76,762
<b>2 Financial Corporations</b>	<b>9,028</b>	<b>6,180</b>	<b>15,208</b>	<b>10,624</b>	<b>6,709</b>	<b>17,332</b>
i Central Bank	0	0	0	0	0	0
ii Deposit money institutions	3,565	733	4,298	4,966	3,242	8,208
ii Other deposit accepting institutions	4,095	3,733	7,828	4,284	2,596	6,881
iv Financial intermediaries	545	444	989	440	582	1,022
v Financial auxiliaries	806	1,266	2,073	915	285	1,200
vi Insurance and pension funds	16	3	20	19	3	22
<b>3 Central Government</b>	<b>0</b>	<b>0</b>	<b>0</b>	<b>0</b>	<b>0</b>	<b>0</b>
<b>4 Provincial Governments</b>	<b>0</b>	<b>0</b>	<b>0</b>	<b>0</b>	<b>0</b>	<b>0</b>
<b>5 Local Governments</b>	<b>0</b>	<b>0</b>	<b>0</b>	<b>0</b>	<b>0</b>	<b>0</b>
<b>6 Household</b>	<b>10,729</b>	<b>12,694</b>	<b>23,423</b>	<b>11,356</b>	<b>13,095</b>	<b>24,451</b>
<b>7 Non-profit Institutions (NPIs) Serving Households</b>	<b>19</b>	<b>0</b>	<b>19</b>	<b>19</b>	<b>0</b>	<b>19</b>
<b>8 Non-Residents</b>	<b>0</b>	<b>0</b>	<b>0</b>	<b>0</b>	<b>0</b>	<b>0</b>
<b>9 Bills purchased and discounted (inland bills)</b>	<b>0</b>	<b>14</b>	<b>14</b>	<b>0</b>	<b>13</b>	<b>13</b>
<b>10 Other Advances and Financial Leases</b>	<b>9,664</b>	<b>10,349</b>	<b>20,013</b>	<b>16,389</b>	<b>7,279</b>	<b>23,668</b>
<b>Total</b>	<b>100,569</b>	<b>36,571</b>	<b>137,141</b>	<b>110,389</b>	<b>33,648</b>	<b>144,037</b>

## 2.13 Classification of NBFC's Investments in Securities and Shares

(Million Rupees)

SECURITIES	Mar-09 <sup>P</sup>			Jun-09 <sup>P</sup>		
	Depository	Non- Depository	Total	Depository	Non- Depository	Total
<b>A. Securities</b>	<b>35,506</b>	<b>45,834</b>	<b>81,340</b>	<b>47,228</b>	<b>46,321</b>	<b>93,549</b>
<b>1 Non-financial Corporations</b>	<b>10,521</b>	<b>29,780</b>	<b>40,301</b>	<b>11,366</b>	<b>26,570</b>	<b>37,936</b>
i Public	1,744	4,377	6,122	1,672	3,897	5,568
ii Private	8,777	25,403	34,179	9,695	22,673	32,368
<b>2 Financial Corporations</b>	<b>5,899</b>	<b>10,894</b>	<b>16,794</b>	<b>7,052</b>	<b>9,002</b>	<b>16,054</b>
i Central Bank	0	0	0	0	0	0
ii Deposit money institutions	4,006	5,535	9,540	4,834	5,235	10,069
ii Other deposit accepting institutions	1,220	3,149	4,369	1,183	2,680	3,864
iv Financial intermediaries	674	2,211	2,885	1,034	1,086	2,121
v Financial auxiliaries	0	0	0	0	0	0
vi Insurance and pension funds	0	0	0	0	0	0
<b>3 Central Government</b>	<b>19,068</b>	<b>5,116</b>	<b>24,184</b>	<b>28,797</b>	<b>10,691</b>	<b>39,488</b>
<b>4 Provincial Governments</b>	<b>0</b>	<b>0</b>	<b>0</b>	<b>0</b>	<b>0</b>	<b>0</b>
<b>5 Local Governments</b>	<b>0</b>	<b>0</b>	<b>0</b>	<b>0</b>	<b>0</b>	<b>0</b>
<b>6 Household</b>	<b>0</b>	<b>0</b>	<b>0</b>	<b>0</b>	<b>0</b>	<b>0</b>
<b>7 Non-profit institutions (NPIs) Serving Households</b>	<b>0</b>	<b>0</b>	<b>0</b>	<b>0</b>	<b>0</b>	<b>0</b>
<b>8 Non-Residents</b>	<b>0</b>	<b>0</b>	<b>0</b>	<b>0</b>	<b>0</b>	<b>0</b>
<b>9 Foreign Currency</b>	<b>18</b>	<b>44</b>	<b>62</b>	<b>13</b>	<b>59</b>	<b>72</b>
<b>B. Shares</b>	<b>18,158</b>	<b>115,571</b>	<b>133,730</b>	<b>20,705</b>	<b>119,691</b>	<b>140,396</b>
<b>1 Non-financial Corporations</b>	<b>8,347</b>	<b>104,389</b>	<b>112,736</b>	<b>10,504</b>	<b>108,189</b>	<b>118,693</b>
i Public	1,608	89,902	91,510	3,104	93,967	97,071
ii Private	6,739	14,487	21,226	7,399	14,223	21,622
<b>2 Financial Corporations</b>	<b>9,407</b>	<b>11,083</b>	<b>20,490</b>	<b>9,792</b>	<b>11,343</b>	<b>21,135</b>
i Central Bank	0	0	0	0	0	0
ii Deposit money institutions	2,916	4,626	7,541	3,214	4,739	7,953
ii Other deposit accepting institutions	2,141	1,798	3,939	2,109	1,697	3,806
iv Financial intermediaries	3,151	4,136	7,287	3,273	4,222	7,495
v Financial auxiliaries	787	0	787	753	80	834
vi Insurance and pension funds	413	523	935	442	605	1,048
<b>3 Central Government</b>	<b>0</b>	<b>0</b>	<b>0</b>	<b>0</b>	<b>0</b>	<b>0</b>
<b>4 Provincial Governments</b>	<b>0</b>	<b>0</b>	<b>0</b>	<b>0</b>	<b>0</b>	<b>0</b>
<b>5 Local Governments</b>	<b>0</b>	<b>0</b>	<b>0</b>	<b>0</b>	<b>0</b>	<b>0</b>
<b>6 Household</b>	<b>0</b>	<b>0</b>	<b>0</b>	<b>0</b>	<b>0</b>	<b>0</b>
<b>7 Non-profit institutions (NPIs) Serving Households</b>	<b>0</b>	<b>0</b>	<b>0</b>	<b>0</b>	<b>0</b>	<b>0</b>
<b>8 Non-residents</b>	<b>404</b>	<b>100</b>	<b>504</b>	<b>409</b>	<b>159</b>	<b>568</b>
<b>Total (A+B)</b>	<b>53,664</b>	<b>161,406</b>	<b>215,070</b>	<b>67,933</b>	<b>166,012</b>	<b>233,945</b>

## 2.14 Currency in Circulation

( Million Rupees )

END OF PERIOD	Subsidiary Coins	One Rupee Coins and above	Five Rupee Notes & above	Total (1+2+3)	Held by Banking Department of SBP	Held by Issue Department of SBP	Currency In tills of Scheduled Banks	Currency In Circulation (4-5-6-7)	
		1	2	3	4	5	6	7	8
2004	Jun.	664	4,941	611,904	<b>617,508</b>	161	2,799	36,432	<b>578,116</b>
	Dec.	667	5,574	691,072	<b>697,313</b>	126	3,068	38,836	<b>655,283</b>
2005	Jun.	667	6,093	705,720	<b>712,480</b>	146	2,961	43,472	<b>665,901</b>
	Dec.	667	6,618	769,617	<b>776,902</b>	157	2,470	42,527	<b>731,749</b>
2006	Jun.	667	6,931	784,236	<b>791,834</b>	139	2,865	48,439	<b>740,391</b>
	Dec.	667	6,933	917,809	<b>925,408</b>	141	2,640	48,367	<b>874,260</b>
2007	Jun.	667	7,441	893,293	<b>901,401</b>	136	3,012	58,072	<b>840,181</b>
	Dec.	667	7,461	1,070,960	<b>1,079,088</b>	156	2,730	68,371	<b>1,007,831</b>
2008	Jun.	667	7,667	1,045,857	<b>1,054,191</b>	182	2,718	68,966	<b>982,325</b>
	Dec.	665	7,696	1,205,289	<b>1,213,650</b>	207	2,575	86,649	<b>1,124,219</b>
2009	Jun. <sup>P</sup>	665	7,685	1,223,521	<b>1,231,871</b>	196	2,496	77,006	<b>1,152,173</b>
2008	Jul.	665	7,129	1,065,303	<b>1,073,097</b>	110	2,692	59,907	<b>1,010,388</b>
	Aug.	665	7,646	1,070,325	<b>1,078,636</b>	161	2,665	57,930	<b>1,017,880</b>
	Sep.	665	7,653	1,168,082	<b>1,176,401</b>	168	2,629	66,255	<b>1,107,349</b>
	Oct.	665	7,596	1,185,624	<b>1,193,885</b>	111	2,614	66,315	<b>1,124,845</b>
	Nov.	665	7,624	1,188,079	<b>1,196,368</b>	139	2,596	72,502	<b>1,121,131</b>
	Dec.	665	7,696	1,205,289	<b>1,213,650</b>	207	2,575	86,649	<b>1,124,219</b>
2009	Jan.	665	7,639	1,186,535	<b>1,194,839</b>	151	2,565	64,773	<b>1,127,350</b>
	Feb.	665	7,675	1,190,890	<b>1,199,231</b>	187	2,556	64,799	<b>1,131,689</b>
	Mar.	665	7,639	1,184,115	<b>1,192,419</b>	151	2,545	75,193	<b>1,114,531</b>
	Apr.	665	7,602	1,183,141	<b>1,191,408</b>	113	2,533	66,077	<b>1,122,685</b>
	May	665	7,649	1,233,154	<b>1,241,468</b>	161	2,493	66,584	<b>1,172,229</b>
	Jun. <sup>P</sup>	665	7,685	1,223,521	<b>1,231,871</b>	196	2,496	77,006	<b>1,152,173</b>
	Jul. <sup>P</sup>	665	7,681	1,236,197	<b>1,244,543</b>	193	2,468	64,064	<b>1,177,818</b>

Note The quarter end data relate to last working day whereas monthly data are of last Saturday of the month . Totals may not tally due to separate rounding off

## 2.15 Government Budgetary Borrowing from Banks

(Million Rupees)

ITEMS	Stocks		Monetary Impact During	
	30-Jun-09	30-Jun-08	1 <sup>st</sup> Jul 08 to 30 <sup>th</sup> Jun 09	1 <sup>st</sup> Jul 07 to 30 <sup>th</sup> Jun 08
<b>1. Central Government (a+b)</b>	<b>1,849,101</b>	<b>1,577,064</b>	<b>272,037</b>	<b>562,912</b>
a. Scheduled Banks	737,490	509,710	227,780	(107,818)
T-Bills and Securities	971,119	732,996	238,123	(97,351)
Less:				
Government Deposits	233,630	223,286	10,344	10,467
b. State Bank	1,111,612	1,067,354	44,258	670,730
T-bills and Securities etc.	1,146,133	1,074,488	71,645	612,869
Debtor Balances (Excluding Zakat Fund)	-	-	-	-
Less:				
Government Deposits (Excluding Zakat and Privatization Fund)	48,137	20,748	27,389	(57,682)
Others	(13,616)	(13,614)	(2)	(179)
<b>2. Provincial Governments (c+d)</b>	<b>(168,079)</b>	<b>(212,460)</b>	<b>44,381</b>	<b>(8,361)</b>
c. Scheduled Banks	(221,114)	(178,821)	(42,293)	(26,355)
Government and Others	1,024	1,100	(76)	-
Less:				
Government Deposits	222,138	179,921	42,217	26,355
d. State Bank	53,035	(33,639)	86,674	17,994
Government Securities	-	-	-	-
Debtor Balances (Excluding Zakat Fund)	75,381	18,719	56,662	7,898
Less:				
Government Deposits (Excluding Zakat Fund)	22,346	52,357	(30,011)	(10,097)
<b>Net Budgetary Borrowing from the Banking System</b>	<b>1,681,022</b>	<b>1,364,604</b>	<b>316,418</b>	<b>554,551</b>

## 2.16 Government Borrowing for Commodity Operations

(Million Rupees)

COMMODITIES	Stocks		Monetary Impact During	
	30-Jun-09	30-Jun-08	1st Jul 08 to 30th Jun 09	1st Jul 07 to 30th Jun 08
Rice	21,133	-	21,133	(2,224)
Wheat	276,782	86,079	190,703	24,030
Sugar	20,150	29,817	(9,668)	4,532
Fertilizer	15,043	7,243	7,800	1,016
Seeds	922	161	760	66
Oilseeds	-	-	-	-
Pulses	245	2,654	(2,408)	2,548
Edible Oil	60	10	50	(1,256)
Black Mash	-	-	-	(57)
Chillies	-	-	-	-
S. Meal	-	-	-	(27)
Gram	-	-	-	-
Onion	-	-	-	(50)
Potatoes	-	-	-	-
Cotton	1,867	1,239	627	73
<b>Total</b>	<b>336,202</b>	<b>127,204</b>	<b>208,998</b>	<b>28,652</b>