

6.1 Government of Pakistan's Treasury Bills

(Million Rupees)

PERIODS	3 months Government of Pakistan Treasury Bills						6 months Government of Pakistan Treasury Bills		
	Discount			Discount		Outstanding Balance	Discount		
	Issue	Allowed	Discharged	Paid	Issue		Allowed	Discharged	
2005 Jun.	74,533.5	1,237.8	76,332.8	867.2	254,698.5	59,097.9	273.1	-	
Dec.	2,734.1	50.9	8,280.6	154.4	14,615.3	1,728.9	71.1	59,097.9	
2006 Jun.	1,800.8	34.2	12,109.3	225.7	2,095.3	623.8	26.2	1,728.9	
Dec.	793.6	15.8	27,846.2	553.8	20,995.0	5,124.8	225.2	623.8	
2007 Jun.	-	-	5,147.5	102.5	3,001.7	299.7	13.3	5,124.8	
Dec.	7,912.0	164.8	-	-	8,026.0	17,332.5	793.6	300.0	
2008 Jun.	65,661.5	1,668.2	489.3	10.8	90,645.9	3,441.3	192.4	17,332.5	
Dec.	146,373.8	4,662.8	49,133.6	1,420.6	412,083.6	6,169.5	431.0	3,441.3	
2009 Jun.	47.0	1.40	44.730	1.19	8,541.2	9,219.0	576.1	6,169.5	
2008 Aug.	72,051.4	2,027.2	57,333.3	1,440.6	249,306.3	-	-	15,643.8	
Sep.	49,133.6	1,420.6	86,916.5	2,286.8	211,523.4	301.9	19.1	7,799.5	
Oct.	111,148.3	3,229.8	90,338.4	2,471.4	239,010.9	1,553.0	98.1	11,777.0	
Nov.	154,561.5	4,774.9	72,051.4	2,027.2	314,843.4	1,892.3	132.2	3,470.7	
Dec.	146,373.8	4,662.8	49,133.6	1,420.6	412,083.6	6,169.5	431.0	3,441.3	
2009 Jan.	153,983.5	4,871.7	164,080.9	4,802.0	401,986.2	26,332.9	1,837.1	-	
Feb.	56,651.6	1,742.2	181,630.0	5,751.5	277,007.7	82,444.1	5,528.5	-	
Mar.	44,726.9	1,185.5	130,408.7	4,130.4	191,325.9	48,560.3	2,834.7	301.9	
Apr.	5,955.8	173.8	89,947.4	2,855.3	107,334.4	13,301.3	848.7	1,553.0	
May.	2,538.3	75.7	56,651.6	1,742.2	53,221.2	8,758.8	573.2	1,892.3	
Jun.	47.0	1.40	44.730	1.19	8,541.2	9,219.0	576.1	6,169.5	
Jul.	11,504.7	299.5	8,494.2	249.6	11,551.7	11,475.9	651.5	26,322.9	
Aug.	2,514.5	71.5	35.0	1.0	14,031.2	9,604.1	595.9	82,444.1	

Note : Six months Government of Pakistan Treasury Bills restarted w. e. f. June 1998 and 3 & 12 months Government of Pakistan Treasury Bills restarted w.e.f July 1998.

6.1 Government of Pakistan's Treasury Bills

(Million Rupees)

PERIODS	6 months Government of Pakistan Treasury Bills		12 months Government of Pakistan Treasury Bills (Auctioned and Rollover)					
	Discount Paid	Outstanding Balance	Issue	Discount Allowed	Discharged	Discount Paid	Outstanding Balance	
2005	Jun.	-	132,708.3	48,360.1	1,229.2	-	-	65,798.8
	Dec.	2,335.8	59,159.9	82,036.8	7,174.7	-	-	329,870.2
2006	Jun.	71.1	7,934.1	28,686.2	2,513.8	48,360.1	4,039.9	422,647.0
	Dec.	26.2	43,288.7	47,687.7	4,282.3	82,150.5	7,184.7	344,177.0
2007	Jun.	225.2	45,252.8	49,979.6	4,550.4	28,686.2	2,513.8	607,844.1
	Dec.	13.3	31,126.8	26,706.0	2,504.0	47,687.7	4,282.3	686,517.2
2008	Jun.	793.6	43,546.7	9,559.4	1,094.0	49,979.6	4,550.4	402,783.9
	Dec.	192.4	9,916.8	-	-	26,706.0	2,503.9	136,100.5
2009	Jun.	431.0	188,606.3	101,872.0	12,847.3	9,559.4	1,094.4	598,990.5
2008	Aug.	756.2	26,488.5	-	-	28,429.7	2,670.3	264,030.9
	Sep.	382.0	18,990.9	-	-	42,788.8	4,010.7	221,242.2
	Oct.	579.2	9,247.7	443.5	0.6	20,067.2	1,880.5	221,507.6
	Nov.	171.2	7,188.5	1.2	0.2	38,813.0	3,636.1	162,806.6
	Dec.	192.4	9,916.8	-	-	26,706.0	2,503.9	136,100.5
	2009	Jan.	-	36,239.6	48,904.3	6,933.5	20,641.3	1,947.0
Feb.	-	118,863.7	141,104.1	18,723.3	47,039.1	4,660.8	258,428.5	
Mar.	19.1	166,942.2	99,893.9	11,769.5	20,477.2	2,057.9	337,845.2	
Apr.	98.1	178,690.4	111,192.5	14,484.5	16,546.4	1,670.8	432,491.4	
May.	132.2	185,556.9	90,083.3	11,893.9	15,896.9	1,614.1	506,677.9	
Jun.	431.0	188,606.3	101,872.0	12,847.3	9,559.4	1,094.4	598,990.5	
Jul.	1,837.1	173,759.4	81,150.2	9,407.2	5,495.6	647.4	674,645.1	
Aug.	5,528.6	100,919.4	107,489.8	13,108.1	-	-	782,134.9	

Source: Financial Markets Strategy & Conduct Department, SBP

6.2 Sale / Purchase of Treasury Bills under Open Market Operation by SBP with Banks

SALE

(Billion Rupees)

PERIODS	2005-06		2006-07		2007-08		2008-09		2009-10	
	Bid Amount		Bid Amount		Bid Amount		Bid Amount		Bid Amount	
	Offered	Accepted	Offered	Accepted	Offered	Accepted	Offered	Accepted	Offered	Accepted
July	56.5	46.8	159.3	133.5	187.8	141.8	508.0	367.9	201.5	153.6
August	86.0	65.2	131.9	105.7	272.9	228.3	71.1	41.2	-	-
September	83.9	69.7	107.0	87.0	81.1	71.3	15.7	9.5		
October	14.0	9.0	92.9	81.3	-	-	44.8	36.0		
November	32.0	26.5	71.5	61.9	163.8	124.7	413.5	223.7		
December	159.2	95.9	124.7	117.2	86.8	69.0	184.3	124.6		
January	82.5	67.1	69.6	60.2	74.7	52.3	280.5	178.9		
February	80.5	64.7	23.9	11.7	95.4	70.9	238.6	142.1		
March	44.5	41.1	50.2	42.1	113.2	77.7	89.1	71.3		
April	-	-	119.0	88.8	160.2	129.9	37.8	24.3		
May	6.6	4.0	27.0	11.4	126.4	80.6	18.5	15.8		
June	235.4	153.8	161.8	135.3	290.6	200.4	187.5	114.9		
Average										
per month	73.4	53.7	94.9	78.0	137.7	103.9	174.1	112.5	100.7	76.8
per day	2.5	1.8	3.2	2.6	4.6	3.5	5.8	3.8	3.4	2.3

PURCHASE

PERIODS	2005-06		2006-07		2007-08		2008-09		2009-10	
	Amount		Amount		Amount		Amount		Amount	
	Offered	Injected	Offered	Injected	Offered	Injected	Offered	Injected	Offered	Injected
July	-	-	-	-	-	-	-	-	102.6	50.0
August	11.2	8.3	27.2	21.2	-	-	117.0	78.2	406.5	250.9
September	-	-	-	-	-	-	259.2	176.4		
October	66.9	38.5	-	-	40.9	40.9	214.8	187.3		
November	123.6	74.1	-	-	-	-	39.9	39.4		
December	-	-	31.3	25.8	-	-	15.9	11.2		
January	139.6	111.5	-	-	41.6	27.5	-	-		
February	60.6	42.8	-	-	-	-	-	-		
March	12.7	10.7	51.1	25.0	102.7	82.1	85.1	60.0		
April	210.5	96.9	-	-	50.1	40.1	378.4	176.8		
May	91.4	46.7	-	-	63.6	41.8	342.5	237.7		
June	-	-	-	-	-	-	186.3	165.0		
Average										
per month	59.7	35.8	9.1	6.0	24.9	19.4	136.6	9.43	254.5	150.5
per day	2.0	1.2	0.3	0.2	0.8	0.7	4.6	0.3	8.5	5.0

Source: Domestic Markets & Monetary Management Department, SBP

6.3 SBP 3-Day Repo Facility MTBs / FIBs / PIBs (Outstanding)

Cash Accommodation

(Million Rupees)

PERIODS	2004-05	2005-06	2006-07	2007-08	2008-09	2009-10
July	700	23,861	38,883	111,817	24,227	24,895
August	10,600	48,241	19,032	68,490	42,861	15,880
September	84,760	45,245	66,715	121,825	254,378	
October	63,324	116,512	27,670	575,455	55,638	
November	14,098	91,780	77,702	126,045	149,228	
December	-	4,520	35,573	427,940	105,625	
January	115,134	29,760	7,718	129,107	66,000	
February	-	12,032	34,435	80,755	6,150	
March	21,695	47,815	75,895	89,772	69,930	
April	800	243,238	51,327	51,609	71,257	
May	70,787	55,246	174,980	93,458	2,200	
June	139,550	44,019	76,830	96,792	27,050	
Average						
per month	43,454	63,522	57,230	164,422	72,879	20,388
per day	1,448	2,117	1,908	5,481	2,429	680

SBP 3-Day Repo Rates

(Percent per annum)

PERIODS	2004-05	2005-06	2006-07	2007-08	2008-09	2009-10
July	7.50	9.00	9.50	9.50	13.00	14.00
August	7.50	9.00	9.50	10.00	13.00	13.00
September	7.50	9.00	9.50	10.00	13.00	
October	7.50	9.00	9.50	10.00	13.00	
November	7.50	9.00	9.50	10.00	15.00	
December	7.50	9.00	9.50	10.00	15.00	
January	7.50	9.00	9.50	10.00	15.00	
February	7.50	9.00	9.50	10.50	15.00	
March	7.50	9.00	9.50	10.50	15.00	
April	9.00	9.00	9.50	10.50	14.00	
May	9.00	9.00	9.50	12.00	14.00	
June	9.00	9.00	9.50	12.00	14.00	

Note: Rates applicable against T-bills & FIBs, PIBs

Source: Domestic Markets & Monetary Management Department, SBP

6.4 Auction of Government of Pakistan's Market Treasury Bills (Auction Wise)

(Million Rupees)

AUCTION SETTLEMENT DATE	3 Months Treasury Bills				6 Months Treasury Bills	
	Amount Offered	Amount Accepted	Cut-off Yield (%)	Weighted Average (%)	Amount Offered	Amount Accepted
2008-09						
31-07-08	92,270	41,070	12.1954	12.1688	-	-
15-08-08	40,350	37,000	12.2959	12.2205	-	-
28-08-08	35,702	35,702	12.5631	12.3874	-	-
11-09-08	45,796	14,759	12.5631	12.5631	650	Rejected
25-09-08	60,245	34,945	12.5631	12.5631	771	321
09-10-08	71,755	52,605	12.5518	12.5518	100	Rejected
23-10-08	66,500	61,600	12.5631	12.5625	600	500
06-11-08	53,571	53,071	13.5313	12.9066	1,700	Rejected
20-11-08	123,667	104,800	13.8549	13.6934	2,500	2,000
04-12-08	153,351	82,550	13.8549	13.8437	4,075	Rejected
18-12-08	87,300	68,450	13.8549	13.8397	6,500	-
02-01-09	77,908	65,908	13.9750	13.8472	1,860	1,360
15-01-09	138,025	45,850	13.8549	13.8545	14,600	10,100
29-01-09	76,385	45,484	13.7624	13.7338	17,200	16,700
12-02-09	57,550	52,350	13.6237	13.4553	62,800	55,450
26-02-09	36,350	6,033	12.6091	12.5629	84,850	32,500
12-03-09	45,200	35,400	11.6908	11.4779	48,855	31,172
26-03-09	16,463	10,463	11.7367	11.6498	25,523	20,223
09-04-09	3,820	3,520	12.6552	12.5336	13,350	11,750
23-04-09	1,600	1,100	12.9775	12.8896	5,200	2,400
07-05-09	5,835	2,600	12.9775	12.9678	5,907	5,307
21-05-09	2,800	Rejected	Rejected	Rejected	5,650	4,025
04-06-09	1,100	Rejected	Rejected	Rejected	10,364	4,564
18-06-09	2,550	Rejected	Rejected	Rejected	15,312	5,231
2009-10						
16-07-09	24,350	10,450	11.4161	11.3064	29,127	12,127
30-07-09	1,975	Rejected	Rejected	Rejected	16,025	Rejected
13-08-09	9,600	Rejected	Rejected	Rejected	13,750	Rejected
27-08-09	2,550	2,550	12.3792	12.3603	10,200	5,231

6.4 Auction of Government of Pakistan.s Market Treasury Bills (Auction Wise)

(Million Rupees)

AUCTION SETTLEMENT DATE	6 Months Treasury Bills		12 Months Treasury Bills			
	Cutt-off Yield (%)	Weighted Average (%)	Amount Offered	Amount Accepted	Cutt-off Yield (%)	Weighted Average (%)
2008-09						
31-07-08	-	-	5,300	Rejected	Rejected	Rejected
15-08-08	-	-	58	Rejected	Rejected	Rejected
28-08-08	-	-	-	-	-	-
11-09-08	Rejected	Rejected	-	-	-	-
25-09-08	12.6876	12.6876	50	Rejected	Rejected	Rejected
09-10-08	Rejected	Rejected	-	-	-	-
23-10-08	12.6649	12.6649	500	500	12.7873	12.7873
06-11-08	Rejected	Rejected	1,500	Rejected	Rejected	Rejected
20-11-08	14.0108	14.0108	3,000	Rejected	Rejected	12.7873
04-12-08	14.0100	14.0108	1,000	Rejected	Rejected	Rejected
18-12-08	14.0108	14.0108	-	Rejected	-	-
02-01-09	13.9959	13.9959	3,000	3,000	14.2595	14.2529
15-01-09	14.0108	14.0093	37,357	29,107	14.2857	14.2609
29-01-09	14.0108	13.9958	105,435	22,600	14.2072	14.1589
12-02-09	13.8731	13.7357	256,900	59,800	13.9074	13.8408
26-02-09	12.9828	12.9600	241,023	100,000	13.0044	12.9881
12-03-09	11.7845	11.6684	174,404	53,685	11.8518	11.7781
26-03-09	11.8970	11.7665	87,510	58,260	11.9522	11.8475
09-04-09	12.9828	12.7641	63,030	54,930	13.4928	12.9687
23-04-09	13.0737	12.9524	125,570	69,445	13.2738	13.1351
07-05-09	13.1876	13.1105	128,030	72,745	13.2995	13.2294
21-05-09	13.1876	13.1423	71,372	55,799	13.2995	13.2648
04-06-09	13.1420	13.1395	137,704	55,799	13.2481	13.2297
18-06-09	12.4385	12.0059	113,934	58,318	12.2418	12.0882
2009-10						
16-07-09	11.5151	11.3847	113,260	40,885	11.5392	11.4703
30-07-09	Rejected	Rejected	99,305	49,455	11.8769	11.7514
13-08-09	Rejected	Rejected	144,300	89,600	12.2292	12.1620
27-08-09	12.5517	12.4425	70,700	30,950	12.4442	12.4204

Source: Domestic Markets & Monetary Management Department, SBP

6.5 Auction of Pakistan Investment Bonds (PIBs)

(Million Rupees)

AUCTION SETTLEMENT DATE	Tenure	Coupon Rate (%)	Amount Offered	Amount Accepted	Price Accepted = Rs.100	Cut-off Yield Accepted (%)	Weighted Average Yield Accepted (%)
2008-09							
30-08-08	3-Years	11.25	375.00	187.50	94.14	13.6973	13.6973
	5-Years	11.50	450.00	Rejected	-	-	-
	7-Years	11.75	325.00	200.00	88.79	14.3398	14.3278
	10-Years	12.00	2,490.00	688.30	86.78	14.5493	14.4724
	15-Years	12.50	50.00	56.00	86.55	14.7500	14.7500
	20-Years	13.00	-	-	-	-	-
	30-Years	13.75	2,500.00	2,500.00	92.15	14.9384	14.6078
19-02-09	3-Years	11.25	11,175.00	3,977.50	94.40	13.9530	13.8806
	5-Years	11.50	8,650.00	3,023.20	90.68	14.3692	14.3350
	7-Years	11.75	3,925.00	2,735.00	87.51	14.7973	14.7030
	10-Years	12.00	21,760.00	7,821.00	85.28	14.9444	14.8642
	15-Years	12.50	2,480.00	1,180.00	82.85	15.4995	15.3557
	20-Years	13.00	3,500.00	1,500.00	82.67	15.8998	15.7002
	30-Years	13.75	4,500.00	2,000.00	83.73	16.4496	16.2248
16-04-09	3-Years	11.25	5,746.00	3,071.50	96.61	12.9385	12.7670
	5-Years	11.50	6,579.00	2,830.00	95.24	12.9495	12.8620
	7-Years	11.75	4,975.00	2,592.00	94.09	13.1395	13.0505
	10-Years	12.00	27,425.00	14,156.00	93.41	13.2409	13.0672
	15-Years	12.50	1,800.00	63.40	91.92	13.8007	13.8007
	20-Years	13.00	1,300.00	200.00	91.80	14.2492	14.2492
	30-Years	13.75	1,500.00	100.00	94.87	14.4995	14.4995
28-05-09	3-Years	11.25	3,825.00	2,866.50	97.56	12.5018	12.3066
	5-Years	11.50	5,795.00	2,988.00	97.00	12.4151	12.3721
	7-Years	11.75	3,000.00	1,800.00	96.43	12.5807	12.5159
	10-Years	12.00	32,180.00	12,365.50	96.57	12.6303	12.5714
	15-Years	12.50	1,500.00	103.00	94.35	13.3900	13.3900
	20-Years	13.00	200.00	200.00	94.59	13.8004	13.8004
	30-Years	13.75	2,000.00	2,000.00	96.16	14.3003	14.3003

Source: Domestic Markets & Monetary Management Department, SBP

6.6 Monthly KIBOR

(Percent per annum)

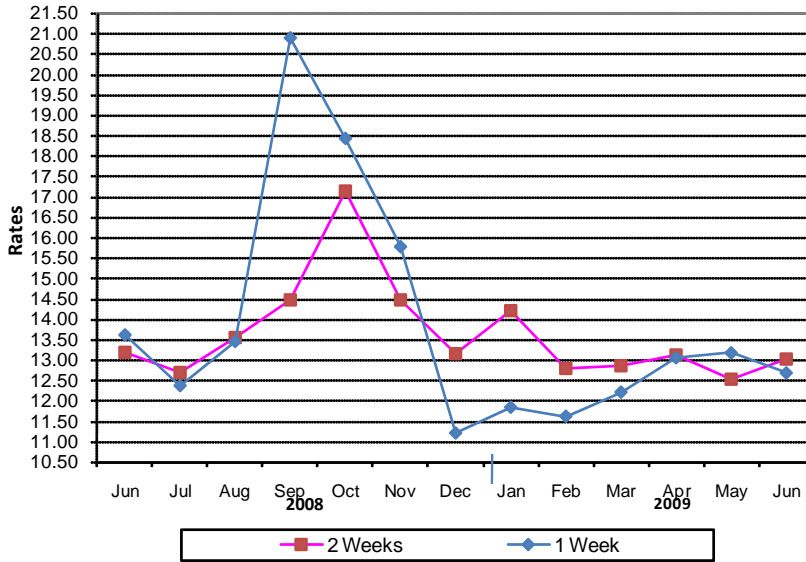
PERIODS			1 Week		2 Weeks		1Month		3 Months		6 Months		9 Months		12 Months	
			Bid	Offer	Bid	Offer	Bid	Offer	Bid	Offer	Bid	Offer	Bid	Offer	Bid	Offer
2008	Aug.	Month Average	11.65	12.65	12.07	12.57	12.46	12.96	12.84	13.34	13.07	13.57	13.30	13.80	13.53	14.03
		End-Month	11.43	12.43	11.98	12.48	12.60	13.10	13.10	13.60	13.26	13.76	13.44	13.94	13.65	14.15
	Sep.	Month Average	12.94	13.94	13.20	13.70	13.31	13.81	13.42	13.92	13.51	14.01	13.63	14.13	13.80	14.30
		End-Month	14.07	15.07	14.04	14.54	14.02	14.52	13.99	14.49	14.02	14.52	14.08	14.58	14.16	14.66
	Oct.	Month Average	13.00	14.00	13.38	13.88	13.74	14.24	14.09	14.59	14.27	14.77	14.37	14.87	14.48	14.98
		End-Month	12.55	13.55	12.91	13.41	13.62	14.12	14.30	14.80	14.60	15.10	14.73	15.23	14.87	15.37
	Nov.	Month Average	10.80	11.48	11.76	12.27	13.78	14.28	15.00	15.35	15.26	15.60	15.34	15.84	15.44	15.94
		End-Month	10.60	11.10	11.26	11.76	13.58	14.08	15.22	15.47	15.42	15.67	15.48	15.98	15.56	16.06
	Dec.	Month Average	9.77	10.27	11.29	11.79	13.78	14.28	15.23	15.48	15.42	15.67	15.50	16.00	15.57	16.07
		End-Month	14.27	14.77	14.02	14.52	14.17	14.67	15.27	15.52	15.45	15.70	15.52	16.02	15.61	16.11
2009	Jan.	Month Average	10.51	11.01	11.32	11.82	12.86	13.36	14.71	14.96	15.21	15.46	15.41	15.91	15.52	16.02
		End-Month	10.01	10.51	10.79	11.29	12.30	12.80	14.16	14.41	14.85	15.10	15.28	15.78	15.44	15.94
	Feb.	Month Average	10.74	11.24	11.31	11.81	11.98	12.48	13.50	13.75	13.95	14.20	14.68	15.18	14.98	15.48
		End-Month	10.34	10.84	10.47	10.97	10.87	11.37	12.14	12.39	12.76	13.01	13.46	13.96	13.93	14.43
	Mar.	Month Average	11.56	12.06	11.52	12.02	11.58	12.08	11.91	12.16	12.29	12.54	13.06	13.56	13.50	14.00
		End-Month	13.46	13.96	12.95	13.45	12.62	13.12	12.52	12.77	12.60	12.85	13.00	13.50	13.41	13.91
	Apr.	Month Average	12.80	13.30	12.81	13.31	12.82	13.32	12.90	13.15	13.02	13.27	13.25	13.75	13.50	14.00
		End-Month	12.96	13.46	12.87	13.37	12.87	13.37	12.99	13.24	13.10	13.35	13.24	13.74	13.45	13.95
	May	Month Average	12.79	13.29	12.88	13.38	12.97	13.47	13.23	13.48	13.29	13.54	13.36	13.86	13.50	14.00
		End-Month	12.83	13.33	12.89	13.39	13.02	13.52	13.47	13.72	13.50	13.75	13.53	14.03	13.59	14.09
	Jun.	Month Average	12.29	12.79	12.55	13.05	12.85	13.35	12.90	13.15	12.93	13.18	13.09	13.59	13.24	13.74
		End-Month	12.99	13.49	12.83	13.33	12.76	13.26	12.52	12.77	12.51	12.76	12.69	13.19	12.81	13.31
	Jul.	Month Average	11.47	11.97	11.51	12.01	11.50	12.00	11.63	11.88	11.80	12.05	12.04	12.54	12.30	12.80
		End-Month	12.10	12.60	12.00	12.50	11.75	12.25	11.68	11.93	11.74	11.99	11.90	12.40	12.20	12.70
	Aug.	Month Average	12.11	12.61	12.06	12.56	12.01	12.51	12.01	12.25	12.02	12.27	12.06	12.56	12.25	12.75
		End-Month	12.16	12.66	12.13	12.63	12.16	12.66	12.29	12.54	12.31	12.56	12.29	12.79	12.34	12.84

KIBOR :Karachi Interbank Offered Rate

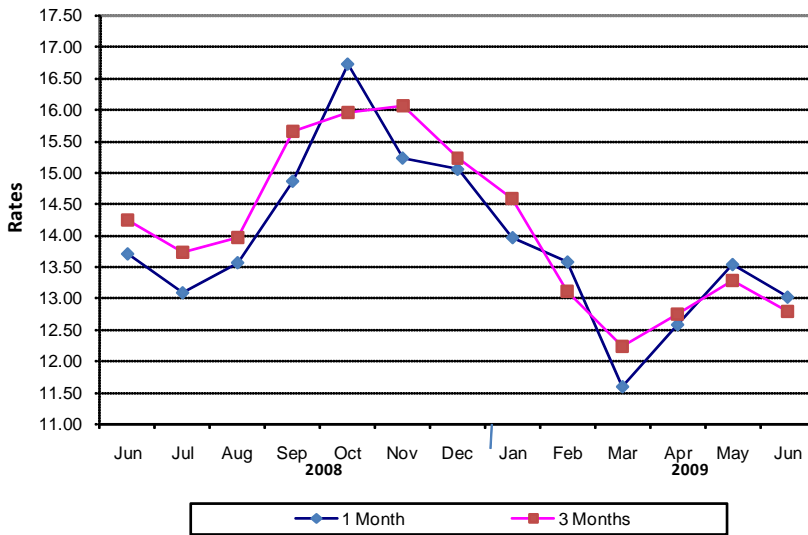
Source: Domestic Markets & Monetary Management Department, SBP

Inter- Bank Average Call Rates

Weekly



Monthly



6.7 Indicative Inter-Bank Average Call Rates

(% Per Annum)

PERIODS	Overnight	1 Week	2 Weeks	1 Month	3 Months	6 Months	1 Year
2008 Jun.	13.55	13.61	13.18	13.70	14.24	13.75	-
Jul.	11.61	12.37	12.69	13.08	13.72	-	-
Aug.	12.93	13.45	13.53	13.56	13.96	-	-
Sep.	16.08	20.88	14.46	14.86	15.65	15.97	-
Oct.	20.03	18.42	17.14	16.73	15.96	-	-
Nov.	13.61	15.77	14.46	15.23	16.06	-	-
Dec.	10.98	11.21	13.16	15.05	15.23	-	-
2009 Jan.	12.05	11.84	14.21	13.96	14.58	14.65	-
Feb.	11.45	11.62	12.80	13.57	13.11	14.03	-
Mar.	12.84	12.21	12.86	11.58	12.22	12.29	-
Apr.	12.65	13.05	13.13	12.57	12.73	13.07	-
May	12.35	13.17	12.52	13.53	13.28	13.36	-
Jun.	11.35	12.68	13.01	13.01	12.77	13.20	-

Source: Domestic Markets & Monetary Management Department, SBP

6.8 SBP Rates for Market to Market (M2M) of Major Currencies

MONTH	US Dollar			Euro			Japanese Yen			Pound Sterling		
	Ready	1Week	1 Month	Ready	1Week	1 Month	Ready	1Week	1 Month	Ready	1Week	1 Month
01-Aug-09	83.3422	83.5281	84.1492	118.8292	119.0961	119.9854	0.8807	0.8827	0.8895	139.2939	139.6008	140.6322
03-Aug-09	83.3586	83.5454	84.1613	118.6818	118.9512	119.8325	0.8772	0.8792	0.8859	140.1758	140.4854	141.5152
04-Aug-09	83.3018	83.4955	84.1095	120.0504	120.3308	121.2203	0.8809	0.8830	0.8897	141.4131	141.7378	142.7739
05-Aug-09	83.2036	83.3959	84.0706	119.7632	120.0442	121.0202	0.8741	0.8761	0.8834	141.3504	141.6742	142.8144
06-Aug-09	82.7826	82.9767	83.6277	119.1490	119.4324	120.3733	0.8678	0.8699	0.8769	140.5732	140.9004	142.0000
07-Aug-09	82.4306	82.7028	83.2610	118.4033	118.7978	119.6038	0.8667	0.8696	0.8757	137.9971	138.4488	139.3765
08-Aug-09	82.9226	83.1153	83.7443	117.4930	117.7699	118.6667	0.8505	0.8526	0.8592	138.3936	138.7110	139.7541
10-Aug-09	82.9457	83.1235	83.7327	117.7165	117.9720	118.8407	0.8519	0.8538	0.8603	137.9594	138.2510	139.2563
11-Aug-09	82.8767	83.0608	83.6736	117.4321	117.6946	118.5663	0.8556	0.8575	0.8640	136.5973	136.8969	137.8989
12-Aug-09	82.7880	82.9666	83.6199	116.8677	117.1227	118.0466	0.8666	0.8685	0.8755	136.0994	136.3898	137.4563
13-Aug-09	82.5653	82.7503	83.3800	117.7630	118.0293	118.9265	0.8567	0.8587	0.8654	136.7778	137.0817	138.1198
15-Aug-09	82.5784	82.7680	83.3956	117.2036	117.4750	118.3681	0.8707	0.8727	0.8795	136.5352	136.8454	137.8786
17-Aug-09	82.5459	82.7563	83.3445	116.5547	116.8526	117.6850	0.8731	0.8754	0.8818	135.0368	135.3779	136.3341
18-Aug-09	82.6790	82.8653	83.4782	116.6807	116.9445	117.8106	0.8682	0.8702	0.8768	135.7920	136.0948	137.0941
19-Aug-09	82.7177	82.8987	83.6455	116.6237	116.8797	117.9347	0.8769	0.8788	0.8869	135.5164	135.8085	137.0268
20-Aug-09	82.8544	83.0290	83.7670	117.9516	118.2010	119.2534	0.8780	0.8799	0.8879	137.2484	137.5335	138.7483
21-Aug-09	82.9561	83.1240	83.8428	118.5691	118.8112	119.8381	0.8851	0.8869	0.8947	136.7199	136.9926	138.1701
22-Aug-09	83.0869	83.2549	83.9701	119.0843	119.3267	120.3503	0.8803	0.8822	0.8899	137.0726	137.3456	138.5178
25-Aug-09	82.8203	82.9934	83.6081	118.2757	118.5233	119.4017	0.8774	0.8793	0.8859	135.5644	135.8434	136.8417
26-Aug-09	82.8017	82.9753	83.6262	118.6632	118.9147	119.8477	0.8796	0.8815	0.8886	135.2484	135.5279	136.5825
27-Aug-09	82.8951	83.0668	83.6887	118.1047	118.3510	119.2364	0.8846	0.8865	0.8933	134.4143	134.6883	135.6894
28-Aug-09	83.0713	83.2293	83.8345	119.0577	119.2844	120.1517	0.8851	0.8868	0.8933	135.2566	135.5097	136.4891
29-Aug-09	83.0983	83.2851	83.8706	118.8513	119.1193	119.9561	0.8874	0.8895	0.8958	135.2300	135.5295	136.4772
31-Aug-09	83.0151	83.2060	83.7906	118.5830	118.8562	119.6913	0.8945	0.8966	0.9030	134.6256	134.9307	135.8736

6.8 SBP Rates for Market to Market (M2M) of Major Currencies

MONTH	Swiss Frank			Australian Dollar			Saudi Arabian Riyal			Kuwaiti Dinnar		
	Ready	1Week	1 Month	Ready	1Week	1 Month	Ready	1Week	1 Month	Ready	1Week	1 Month
01-Aug-09	78.0577	78.2365	78.8371	69.6199	69.7409	70.1207	22.2240	22.2740	22.4422	290.0124	290.6337	292.7183
03-Aug-09	77.8071	77.9851	78.5798	69.8920	70.0141	70.3913	22.2284	22.2787	22.4460	289.8422	290.4862	292.5366
04-Aug-09	78.6385	78.8262	79.4265	70.0943	70.2226	70.6013	22.2129	22.2651	22.4358	291.0310	291.6872	293.7502
05-Aug-09	78.3535	78.5390	79.1938	70.0699	70.1952	70.6318	22.1861	22.2370	22.4200	290.2014	290.8505	293.1126
06-Aug-09	77.9021	78.0903	78.7225	69.7526	69.8788	70.3011	22.0745	22.1264	22.3031	289.0455	289.7020	291.8840
07-Aug-09	77.4105	77.6716	78.2158	69.0315	69.2228	69.5652	21.9806	22.0535	22.2052	287.5654	288.4948	290.3611
08-Aug-09	76.6099	76.7927	77.3922	69.4186	69.5430	69.9435	22.1115	22.1631	22.3331	289.2213	289.8722	291.9751
10-Aug-09	76.6525	76.8218	77.4049	69.6951	69.8077	70.1804	22.1174	22.1651	22.3296	288.5269	289.1242	291.1480
11-Aug-09	76.5110	76.6856	77.2695	69.4879	69.6059	69.9873	22.0987	22.1480	22.3133	288.0065	288.6252	290.6594
12-Aug-09	76.4998	76.6697	77.2916	68.0559	68.1674	68.5784	22.0753	22.1225	22.2998	287.9685	288.5744	290.7204
13-Aug-09	76.8443	77.0207	77.6230	69.4540	69.5728	69.9752	22.0160	22.0648	22.2358	287.4240	288.0467	290.1485
15-Aug-09	76.9711	77.1521	77.7538	68.7589	68.8806	69.2765	22.0194	22.0695	22.2400	287.6195	288.2596	290.3899
17-Aug-09	76.6016	76.8015	77.3667	67.6381	67.7738	68.1208	22.0108	22.0664	22.2264	287.2259	287.9427	289.8283
18-Aug-09	76.7073	76.8849	77.4707	68.1647	68.2823	68.6575	22.0469	22.0969	22.2620	287.6292	288.2613	290.2730
19-Aug-09	76.7896	76.9619	77.6729	67.8740	67.9859	68.4739	22.0566	22.1044	22.3061	287.8440	288.4587	290.9460
20-Aug-09	77.7684	77.9369	78.6470	68.9887	69.0979	69.5849	22.0933	22.1401	22.3388	288.3900	288.9809	291.4090
21-Aug-09	78.2863	78.4503	79.1448	68.7664	68.8695	69.3374	22.1207	22.1658	22.3593	289.2673	289.8363	292.2013
22-Aug-09	78.6101	78.7743	79.4694	69.3651	69.4691	69.9367	22.1550	22.2001	22.3926	289.7135	290.2844	292.6347
25-Aug-09	77.9852	78.1530	78.7500	69.3537	69.4616	69.8419	22.0839	22.1297	22.2961	288.5624	289.1494	291.2462
26-Aug-09	78.1222	78.2903	78.9202	69.3175	69.4263	69.8452	22.0787	22.1250	22.2997	288.1466	288.7394	290.9547
27-Aug-09	77.5445	77.7106	78.3081	68.8526	68.9533	69.3540	22.1045	22.1503	22.3179	288.4712	289.0537	291.1821
28-Aug-09	78.2916	78.4447	79.0318	69.7965	69.8926	70.2751	22.1514	22.1935	22.3565	289.3058	289.8399	291.8979
29-Aug-09	78.4242	78.6050	79.1738	69.9812	70.1023	70.4685	22.1581	22.2080	22.3667	290.5026	291.1303	293.1002
31-Aug-09	78.2424	78.4266	78.9934	69.6206	69.7445	70.1073	22.1359	22.1864	22.3448	288.8990	289.5473	291.5267

Source: Domestic Markets & Monetary Management Department, SBP

6.9 Secondary Market Transactions in Government Securities

(Billion Rupees)

SECURITIES/TRANSACTIONS	2008							2009					
	Jun.	Jul.	Aug.	Sep.	Oct.	Nov.	Dec.	Jan.	Feb.	Mar.	Apr.	May	Jun
PIBs													
Purchases	91.6	71.8	72.0	120.3	106.9	137.9	83.8	39.2	44.8	30.3	83.7	80.2	59.0
Non Banks													
Repo	4.9	3.1	0.2	0.6	1.3	0.2	8.0	1.7	0.3	1.5	2.7	5.4	1.2
Outright	4.6	1.1	3.2	0.5	1.1	0.2	2.2	0.3	7.4	2.0	6.9	5.9	1.4
Banks/PDs													
Repo	65.3	58.0	46.9	40.9	47.6	54.7	40.7	26.0	22.3	14.5	20.5	8.2	25.9
Outright	6.1	8.1	3.0	1.9	2.2	1.0	4.7	0.3	14.8	6.2	21.1	12.4	6.3
SBP													
Repo	10.8	1.5	18.8	76.5	54.7	81.8	28.2	10.9	-	6.0	32.5	48.3	24.2
Outright	-	-	-	-	-	-	-	-	-	-	-	-	-
Sales	91.6	71.8	72.0	120.3	106.9	137.9	83.8	39.2	44.8	30.3	83.7	80.2	59.0
Non Banks													
Repo	8.9	7.5	9.4	11.1	11.4	7.2	7.3	3.4	4.0	2.1	2.5	0.5	4.6
Outright	0.2	0.7	0.3	0.3	-	0.5	2.0	0.1	2.7	1.4	1.0	1.3	1.0
Banks/PDs													
Repo	72.1	55.1	56.4	107.0	92.2	129.5	69.6	35.3	18.6	19.9	53.2	61.4	46.7
Outright	10.5	8.5	5.8	1.9	3.3	0.7	4.9	0.6	19.5	6.8	27.0	16.9	6.7
SBP													
Repo	-	-	-	-	-	-	-	-	-	-	-	-	-
Outright	-	-	-	-	-	-	-	-	-	-	-	-	-
Net Position	-	-	-	-	-	-	-	-	-	-	-	-	-
Treasury Bills													
Purchases	1,236.5	1,226.5	962.6	1,099.3	1,127.6	1,259.8	977.3	1,181.8	1,205.1	1,293.0	1,446.9	1,289.5	1,291.5
Non Banks													
Repo	39.6	4.8	3.0	3.1	2.5	8.7	2.6	14.3	6.4	17.5	23.1	28.4	12.5
Outright	9.9	4.1	8.4	6.3	1.8	20.3	21.1	29.6	11.3	28.4	40.5	26.4	27.5
Banks/PDs													
Repo	1,046.8	1,128.9	763.2	703.1	912.0	1,106.1	808.3	964.6	1,017.1	996.7	969.0	933.1	1,007.3
Outright	55.8	66.1	86.6	43.0	54.4	70.9	107.8	145.8	164.1	126.5	121.8	107.9	103.4
SBP													
Repo	84.4	22.7	101.5	343.8	157.0	53.8	37.6	27.5	6.2	123.9	292.6	193.6	140.8
Sales	1,236.5	1,226.5	962.6	1,099.3	1,127.6	1,259.8	977.3	1,181.8	1,205.1	1,293.0	1,446.9	1,289.5	1,291.5
Non Banks													
Repo	33.0	66.2	47.4	42.0	49.6	31.2	51.8	72.0	78.7	72.4	95.4	44.7	75.9
Outright	0.0	-	0.2	0.1	0.0	0.0	1.2	6.2	1.8	4.3	2.3	4.3	2.9
Banks/PDs													
Repo	937.4	722.3	779.1	981.0	985.9	948.2	685.0	755.5	808.9	1,018.5	1,174.2	1,094.6	969.8
Outright	65.7	70.2	94.8	49.3	56.1	91.1	127.6	169.1	173.6	126.5	160.0	130.1	128.0
SBP													
Repo	200.4	367.9	41.2	27.0	36.0	189.2	111.6	178.9	142.1	71.3	15.0	15.8	114.9
Net Position	-	-	-	-	-	-	-	-	-	-	-	-	-