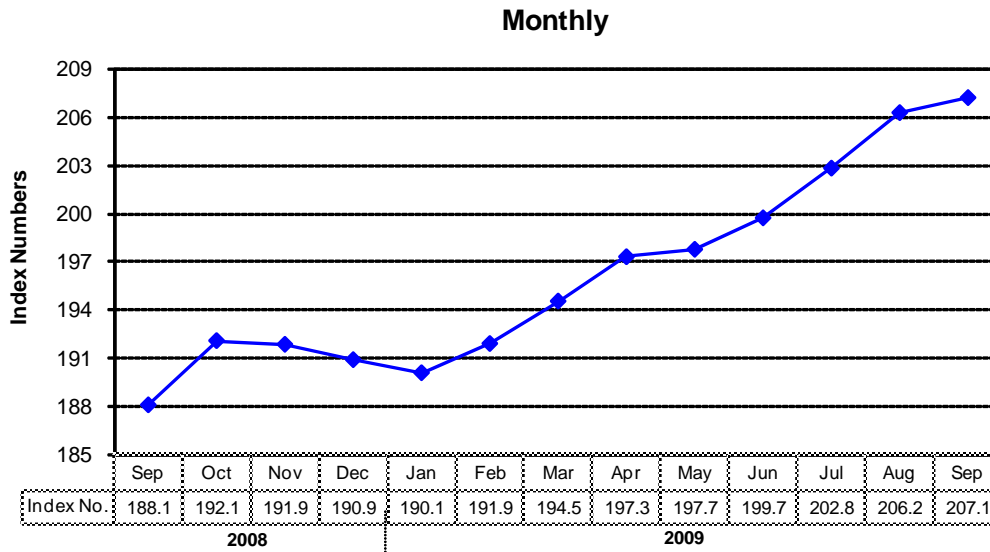
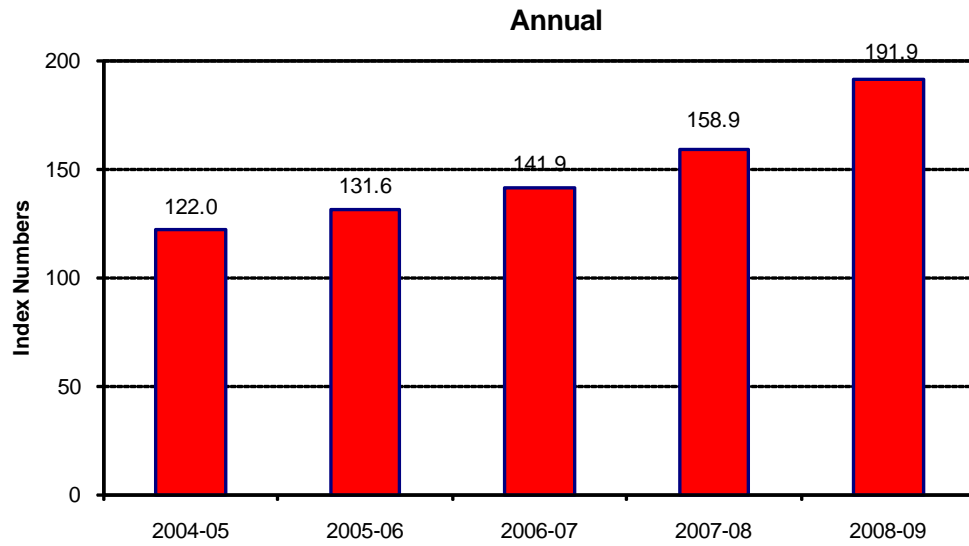


## 8.1 Combined Consumer Price Index Numbers by Commodity Groups - All Urban (2000-01=100)

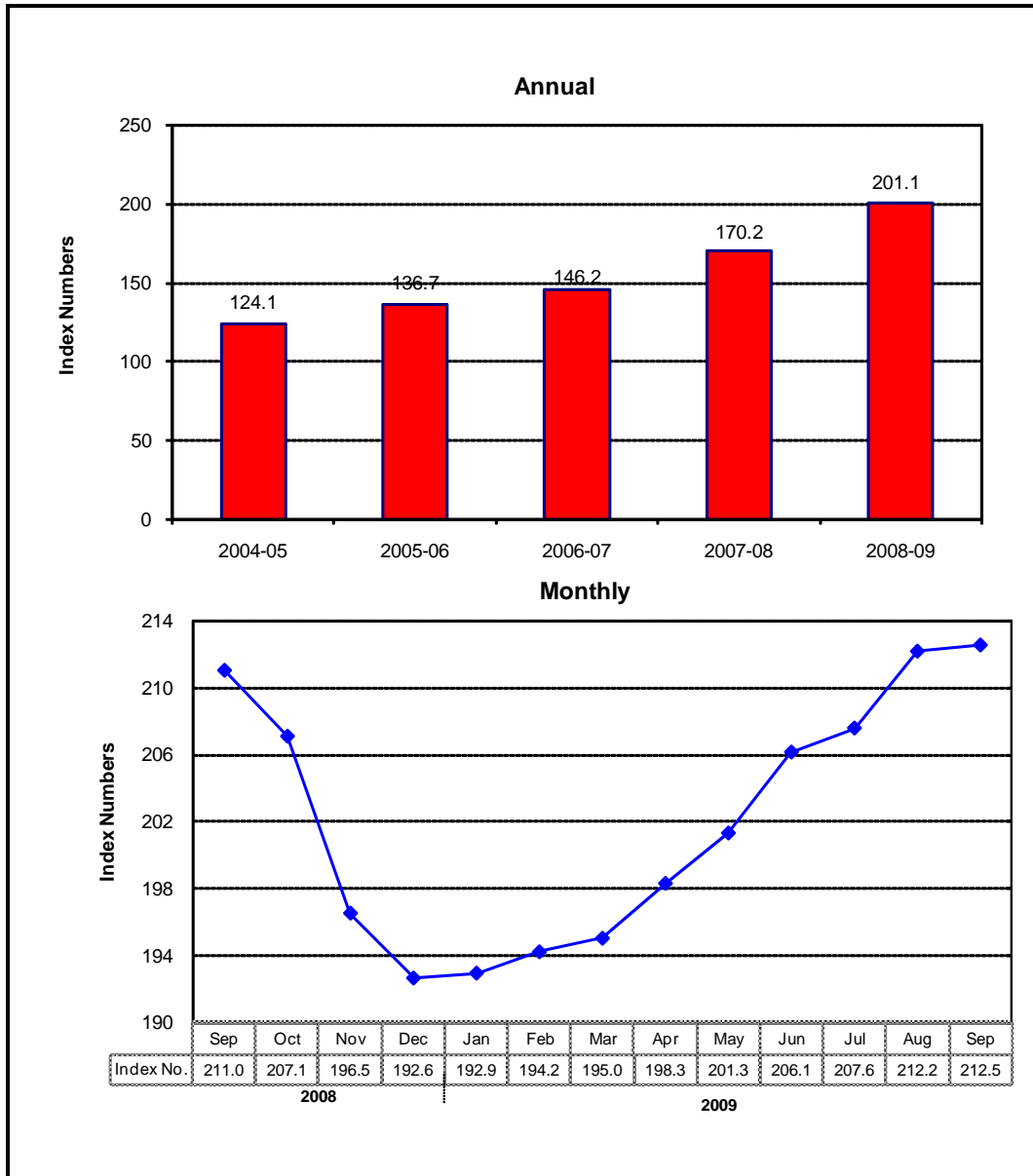
| YEAR / MONTH | General       | Food and Beverages | Apparel Textile and Footwear | House Rent | Fuel and Lighting | Household Furniture and Equipment | Transport and Communication | Recreation & Entertainment | Education | Cleaning, Laundry and Personal Appearance | Medicare |
|--------------|---------------|--------------------|------------------------------|------------|-------------------|-----------------------------------|-----------------------------|----------------------------|-----------|---|----------|
| 2004-05      | <b>121.98</b> | 125.69             | 112.98                       | 120.42     | 125.77            | 117.34                            | 125.11                      | 105.93                     | 117.55    | 115.90                                    | 107.94   |
| 2005-06      | <b>131.64</b> | 134.39             | 117.58                       | 132.36     | 137.09            | 123.41                            | 145.90                      | 105.65                     | 125.03    | 119.49                                    | 110.66   |
| 2006-07      | <b>141.87</b> | 148.21             | 123.70                       | 141.21     | 149.43            | 131.64                            | 148.96                      | 105.76                     | 133.82    | 124.53                                    | 120.91   |
| 2007-08      | <b>158.90</b> | 174.36             | 133.79                       | 154.47     | 158.48            | 141.08                            | 155.55                      | 107.86                     | 140.88    | 138.28                                    | 132.23   |
| 2008-09      | <b>191.90</b> | 215.69             | 152.82                       | 1,784.53   | 198.92            | 159.58                            | 192.55                      | 120.00                     | 165.27    | 163.17                                    | 147.25   |
| 2008         |               |                    |                              |            |                   |                                   |                             |                            |           |   |          |
| Sep.         | <b>188.10</b> | 214.13             | 150.58                       | 171.70     | 185.55            | 155.01                            | 205.24                      | 118.80                     | 160.26    | 155.94                                    | 143.40   |
| Oct.         | <b>192.08</b> | 221.44             | 151.62                       | 174.44     | 185.90            | 156.97                            | 204.43                      | 119.17                     | 160.80    | 159.76                                    | 145.96   |
| Nov.         | <b>191.85</b> | 218.12             | 152.74                       | 177.22     | 203.62            | 159.08                            | 188.88                      | 119.47                     | 161.90    | 161.71                                    | 146.10   |
| Dec.         | <b>190.90</b> | 214.71             | 153.35                       | 179.99     | 202.54            | 159.97                            | 185.00                      | 119.61                     | 163.18    | 162.03                                    | 146.53   |
| 2009         |               |                    |                              |            |                   |                                   |                             |                            |           |   |          |
| Jan.         | <b>190.09</b> | 210.33             | 153.52                       | 182.77     | 203.09            | 160.97                            | 185.59                      | 119.69                     | 163.31    | 164.00                                    | 149.38   |
| Feb.         | <b>191.90</b> | 211.58             | 153.92                       | 185.20     | 208.21            | 162.17                            | 186.04                      | 121.25                     | 164.68    | 167.37                                    | 149.97   |
| Mar.         | <b>194.53</b> | 216.13             | 154.41                       | 187.57     | 208.15            | 163.16                            | 186.23                      | 121.30                     | 165.58    | 169.61                                    | 150.09   |
| Apr.         | <b>197.28</b> | 220.46             | 155.53                       | 189.92     | 208.09            | 163.68                            | 186.43                      | 121.37                     | 175.79    | 169.58                                    | 150.28   |
| May          | <b>197.74</b> | 220.04             | 156.09                       | 192.23     | 207.85            | 164.49                            | 185.24                      | 121.53                     | 178.21    | 170.35                                    | 150.63   |
| Jun.         | <b>199.69</b> | 222.23             | 156.49                       | 194.38     | 208.26            | 164.82                            | 190.98                      | 121.62                     | 178.50    | 171.41                                    | 150.63   |
| Jul.         | <b>202.77</b> | 228.93             | 156.96                       | 196.70     | 206.77            | 164.83                            | 189.66                      | 121.62                     | 178.57    | 171.56                                    | 150.64   |
| Aug.         | <b>206.21</b> | 234.69             | 157.79                       | 198.69     | 207.84            | 165.37                            | 194.45                      | 121.65                     | 181.06    | 172.64                                    | 150.64   |
| Sep.         | <b>207.14</b> | 235.59             | 158.97                       | 200.50     | 209.16            | 166.11                            | 192.13                      | 121.69                     | 181.81    | 174.20                                    | 150.86   |

Source : Federal Bureau of Statistics

## Index Numbers of Consumer Prices (2000 - 01=100)



## Index Numbers of Wholesale Prices (2000-01=100)



## 8.2 Index Numbers of Wholesale Prices by Commodity Groups (2000-01=100 )

| YEAR / MONTH | General       | Food   | Raw Materials | Fuel,Lighting<br>and<br>Lubricants | Manufactures | Building<br>Materials |
|--------------|---------------|--------|---------------|------------------------------------|--------------|-----------------------|
| 2004-05      | <b>124.14</b> | 125.03 | 110.44        | 138.01                             | 113.05       | 143.79                |
| 2005-06      | <b>136.68</b> | 133.78 | 121.93        | 174.57                             | 115.39       | 144.18                |
| 2006-07      | <b>146.18</b> | 145.67 | 138.85        | 184.10                             | 119.91       | 151.93                |
| 2007-08      | <b>170.15</b> | 173.27 | 156.57        | 223.34                             | 128.33       | 177.18                |
| 2008-09      | <b>201.10</b> | 213.54 | 184.45        | 258.96                             | 140.67       | 213.00                |
| 2008         |               |        |               |                                    |              |                       |
| Sep.         | <b>211.02</b> | 213.62 | 186.88        | 299.99                             | 145.12       | 226.25                |
| Oct.         | <b>207.08</b> | 219.58 | 176.03        | 271.12                             | 145.01       | 226.74                |
| Nov.         | <b>196.50</b> | 215.97 | 173.65        | 232.07                             | 140.24       | 224.81                |
| Dec.         | <b>192.62</b> | 210.77 | 169.18        | 231.18                             | 137.80       | 213.13                |
| 2009         |               |        |               |                                    |              |                       |
| Jan.         | <b>192.91</b> | 208.80 | 180.44        | 235.66                             | 137.00       | 203.89                |
| Feb.         | <b>194.19</b> | 210.31 | 185.92        | 233.61                             | 138.38       | 209.20                |
| Mar.         | <b>195.00</b> | 212.16 | 185.99        | 234.15                             | 138.81       | 205.10                |
| Apr.         | <b>198.28</b> | 215.69 | 191.49        | 240.74                             | 139.80       | 201.40                |
| May          | <b>201.29</b> | 217.50 | 197.90        | 249.60                             | 141.25       | 194.06                |
| Jun.         | <b>206.13</b> | 219.81 | 196.93        | 269.94                             | 141.24       | 194.63                |
| Jul.         | <b>207.57</b> | 224.31 | 193.88        | 267.47                             | 141.07       | 201.15                |
| Aug.         | <b>212.16</b> | 229.52 | 197.76        | 275.45                             | 143.57       | 198.98                |
| Sep.         | <b>212.53</b> | 230.34 | 195.69        | 276.34                             | 144.39       | 194.80                |

Source : Federal Bureau of Statistics

### 8.3 Combined Sensitive Price Indicator (SPI) by Income Groups (2000-01 =100)

| YEAR / MONTH | INCOME GROUP     |                          |                           |                   |               |               |
|--------------|------------------|--------------------------|---------------------------|-------------------|---------------|---------------|
|              | Group-I          | Group-II                 | Group-III                 | Group-IV          | Combined      |               |
|              | Up to<br>Rs.3000 | Rs.3001<br>to<br>Rs.5000 | Rs.5001<br>to<br>Rs.12000 | Above<br>Rs.12000 |               |               |
| 2004-05      | 127.59           | 127.50                   | 127.01                    | 127.35            | <b>126.52</b> |               |
| 2005-06      | 136.56           | 136.15                   | 135.99                    | 139.80            | <b>136.43</b> |               |
| 2006-07      | 151.34           | 150.44                   | 149.97                    | 152.32            | <b>149.29</b> |               |
| 2007-08      | 176.77           | 175.15                   | 172.60                    | 170.45            | <b>170.55</b> |               |
| 2008-09      | 218.16           | 216.02                   | 213.77                    | 208.87            | <b>209.29</b> |               |
| 2008         | Sep.             | 217.27                   | 213.96                    | 211.75            | 210.65        | <b>209.52</b> |
|              | Oct.             | 223.14                   | 219.50                    | 216.66            | 213.47        | <b>213.37</b> |
|              | Nov.             | 220.13                   | 217.61                    | 215.14            | 210.49        | <b>211.03</b> |
|              | Dec.             | 216.40                   | 215.31                    | 213.34            | 206.52        | <b>207.99</b> |
| 2009         | Jan.             | 213.32                   | 211.79                    | 209.40            | 203.17        | <b>204.02</b> |
|              | Feb.             | 215.13                   | 213.85                    | 212.36            | 206.69        | <b>206.78</b> |
|              | Mar.             | 216.51                   | 215.19                    | 213.86            | 208.26        | <b>208.40</b> |
|              | Apr.             | 220.14                   | 218.67                    | 216.73            | 210.05        | <b>210.85</b> |
|              | May              | 222.94                   | 221.20                    | 218.79            | 211.21        | <b>212.62</b> |
|              | Jun.             | 225.54                   | 223.81                    | 221.44            | 213.19        | <b>215.09</b> |
|              | Jul.             | 231.80                   | 230.03                    | 227.71            | 220.42        | <b>222.00</b> |
|              | Aug.             | 235.70                   | 233.79                    | 231.24            | 222.78        | <b>225.18</b> |
|              | Sep.             | 237.02                   | 235.14                    | 232.80            | 225.77        | <b>227.34</b> |

Note: SPI figures revised as it is computed on 53 items instead of 51 items.

Source : Federal Bureau of Statistics

## 8.4 Bullion Prices

(Rupees per 10 Grams)

| YEAR / MONTH |      | GOLD TEZABI |        | SILVER TEZABI |        |
|--------------|------|-------------|--------|---------------|--------|
|              |      | Karachi     | Lahore | Karachi       | Lahore |
| 2004-05      |      | 8,216       | 8,238  | 118           | 138    |
| 2005-06      |      | 10,317      | 10,307 | 180           | 176    |
| 2006-07      |      | 12,619      | 12,603 | 228           | 231    |
| 2007-08      |      | 16,695      | 16,635 | 306           | 306    |
| 2008-09      |      | 22,195      | 22,176 | 329           | 330    |
| 2008         | Sep. | 20,304      | 20,280 | 358           | 351    |
|              | Oct. | 22,034      | 21,832 | 331           | 322    |
|              | Nov. | 20,043      | 19,956 | 293           | 303    |
|              | Dec. | 20,540      | 20,819 | 282           | 286    |
| 2009         | Jan. | 21,681      | 21,752 | 297           | 298    |
|              | Feb. | 23,844      | 23,779 | 323           | 320    |
|              | Mar. | 24,047      | 24,054 | 321           | 338    |
|              | Apr. | 23,441      | 23,415 | 316           | 318    |
|              | May  | 23,899      | 23,773 | 329           | 324    |
|              | Jun. | 24,592      | 24,643 | 340           | 341    |
|              | Jul. | 24,603      | 24,611 | 341           | 344    |
|              | Aug. | 25,088      | 25,154 | 350           | 350    |
|              | Sep. | 26,215      | ---    | 382           | ---    |

Figures are monthly / yearly averages

Source: Daily Business Recorder