

6.1 Government of Pakistan's Treasury Bills

(Million Rupees)

PERIODS	3 months Government of Pakistan Treasury Bills						6 months Government of Pakistan Treasury Bills		
	Discount			Discount		Outstanding Balance	Discount		
	Issue	Allowed	Discharged	Paid	Issue		Allowed	Discharged	
2005 Jun.	74,533.5	1,237.8	76,332.8	867.2	254,698.5	59,097.9	273.1	-	
Dec.	2,734.1	50.9	8,280.6	154.4	14,615.3	1,728.9	71.1	59,097.9	
2006 Jun.	1,800.8	34.2	12,109.3	225.7	2,095.3	623.8	26.2	1,728.9	
Dec.	793.6	15.8	27,846.2	553.8	20,995.0	5,124.8	225.2	623.8	
2007 Jun.	-	-	5,147.5	102.5	3,001.7	299.7	13.3	5,124.8	
Dec.	7,912.0	164.8	-	-	8,026.0	17,332.5	793.6	300.0	
2008 Jun.	65,661.5	1,668.2	489.3	10.8	90,645.9	3,441.3	192.4	17,332.5	
Dec.	146,373.8	4,662.8	49,133.6	1,420.6	412,083.6	6,169.5	431.0	3,441.3	
2009 Jun.	47.0	1.40	44,730	1.19	8,541.2	9,219.0	576.1	6,169.5	
2008 Sep.	49,133.6	1,420.6	86,916.5	2,286.8	211,523.4	301.9	19.1	7,799.5	
Oct.	111,148.3	3,229.8	90,338.4	2,471.4	239,010.9	1,553.0	98.1	11,777.0	
Nov.	154,561.5	4,774.9	72,051.4	2,027.2	314,843.4	1,892.3	132.2	3,470.7	
Dec.	146,373.8	4,662.8	49,133.6	1,420.6	412,083.6	6,169.5	431.0	3,441.3	
2009 Jan.	153,983.5	4,871.7	164,080.9	4,802.0	401,986.2	26,332.9	1,837.1	-	
Feb.	56,651.6	1,742.2	181,630.0	5,751.5	277,007.7	82,444.1	5,528.5	-	
Mar.	44,726.9	1,185.5	130,408.7	4,130.4	191,325.9	48,560.3	2,834.7	301.9	
Apr.	5,955.8	173.8	89,947.4	2,855.3	107,334.4	13,301.3	848.7	1,553.0	
May.	2,538.3	75.7	56,651.6	1,742.2	53,221.2	8,758.8	573.2	1,892.3	
Jun.	47.0	1.40	44,730	1.19	8,541.2	9,219.0	576.1	6,169.5	
Jul.	11,504.7	299.5	8,494.2	249.6	11,551.7	11,475.9	651.5	26,322.9	
Aug.	2,514.5	71.5	35.0	1.0	14,031.2	9,604.1	595.9	82,444.1	
Sep.	15,589.1	439.3	46.0	1.4	29,574.2	27,630.8	1,731.7	48,560.3	

Note : Six months Government of Pakistan Treasury Bills restarted w. e. f. June 1998 and 3 & 12 months Government of Pakistan Treasury Bills restarted w.e.f July 1998.

6.1 Government of Pakistan's Treasury Bills

(Million Rupees)

PERIODS	6 months Government of Pakistan Treasury Bills		12 months Government of Pakistan Treasury Bills (Auctioned and Rollover)					Outstanding Balance
	Discount Paid	Outstanding Balance	Issue	Discount Allowed	Discharged	Discount Paid		
2005 Jun.	-	132,708.3	48,360.1	1,229.2	-	-	65,798.8	
Dec.	2,335.8	59,159.9	82,036.8	7,174.7	-	-	329,870.2	
2006 Jun.	71.1	7,934.1	28,686.2	2,513.8	48,360.1	4,039.9	422,647.0	
Dec.	26.2	43,288.7	47,687.7	4,282.3	82,150.5	7,184.7	344,177.0	
2007 Jun.	225.2	45,252.8	49,979.6	4,550.4	28,686.2	2,513.8	607,844.1	
Dec.	13.3	31,126.8	26,706.0	2,504.0	47,687.7	4,282.3	686,517.2	
2008 Jun.	793.6	43,546.7	9,559.4	1,094.0	49,979.6	4,550.4	402,783.9	
Dec.	192.4	9,916.8	-	-	26,706.0	2,503.9	136,100.5	
2009 Jun.	431.0	188,606.3	101,872.0	12,847.3	9,559.4	1,094.4	598,990.5	
2008 Sep.	382.0	18,990.9	-	-	42,788.8	4,010.7	221,242.2	
Oct.	579.2	9,247.7	443.5	0.6	20,067.2	1,880.5	221,507.6	
Nov.	171.2	7,188.5	1.2	0.2	38,813.0	3,636.1	162,806.6	
Dec.	192.4	9,916.8	-	-	26,706.0	2,503.9	136,100.5	
2009 Jan.	-	36,239.6	48,904.3	6,933.5	20,641.3	1,947.0	164,363.5	
Feb.	-	118,863.7	141,104.1	18,723.3	47,039.1	4,660.8	258,428.5	
Mar.	19.1	166,942.2	99,893.9	11,769.5	20,477.2	2,057.9	337,845.2	
Apr.	98.1	178,690.4	111,192.5	14,484.5	16,546.4	1,670.8	432,491.4	
May.	132.2	185,556.9	90,083.3	11,893.9	15,896.9	1,614.1	506,677.9	
Jun.	431.0	188,606.3	101,872.0	12,847.3	9,559.4	1,094.4	598,990.5	
Jul.	1,837.1	173,759.4	81,150.2	9,407.2	5,495.6	647.4	674,645.1	
Aug.	5,528.6	100,919.4	107,489.8	13,108.1	-	-	782,134.9	
Sep.	2,834.7	79,989.9	67,928.5	8,416.1	-	-	850,063.4	

Source: Financial Markets Strategy & Conduct Department, SBP

6.2 Sale / Purchase of Treasury Bills under Open Market Operation by SBP with Banks

SALE

(Billion Rupees)

PERIODS	2005-06		2006-07		2007-08		2008-09		2009-10	
	Bid Amount		Bid Amount		Bid Amount		Bid Amount		Bid Amount	
	Offered	Accepted	Offered	Accepted	Offered	Accepted	Offered	Accepted	Offered	Accepted
July	56.5	46.8	159.3	133.5	187.8	141.8	508.0	367.9	201.5	153.6
August	86.0	65.2	131.9	105.7	272.9	228.3	71.1	41.2	-	-
September	83.9	69.7	107.0	87.0	81.1	71.3	15.7	9.5	-	-
October	14.0	9.0	92.9	81.3	-	-	44.8	36.0		
November	32.0	26.5	71.5	61.9	163.8	124.7	413.5	223.7		
December	159.2	95.9	124.7	117.2	86.8	69.0	184.3	124.6		
January	82.5	67.1	69.6	60.2	74.7	52.3	280.5	178.9		
February	80.5	64.7	23.9	11.7	95.4	70.9	238.6	142.1		
March	44.5	41.1	50.2	42.1	113.2	77.7	89.1	71.3		
April	-	-	119.0	88.8	160.2	129.9	37.8	24.3		
May	6.6	4.0	27.0	11.4	126.4	80.6	18.5	15.8		
June	235.4	153.8	161.8	135.3	290.6	200.4	187.5	114.9		
Average										
per month	73.4	53.7	94.9	78.0	137.7	103.9	174.1	112.5	67.2	51.2
per day	2.5	1.8	3.2	2.6	4.6	3.5	5.8	3.8	2.2	1.7

PURCHASE

PERIODS	2005-06		2006-07		2007-08		2008-09		2009-10	
	Amount		Amount		Amount		Amount		Amount	
	Offered	Injected	Offered	Injected	Offered	Injected	Offered	Injected	Offered	Injected
July	-	-	-	-	-	-	-	-	102.6	50.0
August	11.2	8.3	27.2	21.2	-	-	117.0	78.2	406.5	250.9
September	-	-	-	-	-	-	259.2	176.4	276.3	206.0
October	66.9	38.5	-	-	40.9	40.9	214.8	187.3		
November	123.6	74.1	-	-	-	-	39.9	39.4		
December	-	-	31.3	25.8	-	-	15.9	11.2		
January	139.6	111.5	-	-	41.6	27.5	-	-		
February	60.6	42.8	-	-	-	-	-	-		
March	12.7	10.7	51.1	25.0	102.7	82.1	85.1	60.0		
April	210.5	96.9	-	-	50.1	40.1	378.4	176.8		
May	91.4	46.7	-	-	63.6	41.8	342.5	237.7		
June	-	-	-	-	-	-	186.3	165.0		
Average										
per month	59.7	35.8	9.1	6.0	24.9	19.4	136.6	9.43	261.8	169.0
per day	2.0	1.2	0.3	0.2	0.8	0.7	4.6	0.3	8.7	5.6

Source: Domestic Markets & Monetary Management Department, SBP

6.3 SBP 3-Day Repo Facility MTBs / FIBs / PIBs (Outstanding)

Cash Accommodation

(Million Rupees)

PERIODS	2004-05	2005-06	2006-07	2007-08	2008-09	2009-10
July	700	23,861	38,883	111,817	24,227	24,895
August	10,600	48,241	19,032	68,490	42,861	15,880
September	84,760	45,245	66,715	121,825	254,378	113,800
October	63,324	116,512	27,670	575,455	55,638	
November	14,098	91,780	77,702	126,045	149,228	
December	-	4,520	35,573	427,940	105,625	
January	115,134	29,760	7,718	129,107	66,000	
February	-	12,032	34,435	80,755	6,150	
March	21,695	47,815	75,895	89,772	69,930	
April	800	243,238	51,327	51,609	71,257	
May	70,787	55,246	174,980	93,458	2,200	
June	139,550	44,019	76,830	96,792	27,050	
Average						
per month	43,454	63,522	57,230	164,422	72,879	51,525
per day	1,448	2,117	1,908	5,481	2,429	1,718

SBP 3-Day Repo Rates

(Percent per annum)

PERIODS	2004-05	2005-06	2006-07	2007-08	2008-09	2009-10
July	7.50	9.00	9.50	9.50	13.00	14.00
August	7.50	9.00	9.50	10.00	13.00	13.00
September	7.50	9.00	9.50	10.00	13.00	13.00
October	7.50	9.00	9.50	10.00	13.00	
November	7.50	9.00	9.50	10.00	15.00	
December	7.50	9.00	9.50	10.00	15.00	
January	7.50	9.00	9.50	10.00	15.00	
February	7.50	9.00	9.50	10.50	15.00	
March	7.50	9.00	9.50	10.50	15.00	
April	9.00	9.00	9.50	10.50	14.00	
May	9.00	9.00	9.50	12.00	14.00	
June	9.00	9.00	9.50	12.00	14.00	

Note: Rates applicable against T-bills & FIBs, PIBs

Source: Domestic Markets & Monetary Management Department, SBP

6.4 Auction of Government of Pakistan's Market Treasury Bills (Auction Wise)

(Million Rupees)

AUCTION SETTLEMENT DATE	3 Months Treasury Bills				6 Months Treasury Bills	
	Amount Offered	Amount Accepted	Cut-off Yield (%)	Weighted Average (%)	Amount Offered	Amount Accepted
2008-09						
15-08-08	40,350	37,000	12.2959	12.2205	-	-
28-08-08	35,702	35,702	12.5631	12.3874	-	-
11-09-08	45,796	14,759	12.5631	12.5631	650	Rejected
25-09-08	60,245	34,945	12.5631	12.5631	771	321
09-10-08	71,755	52,605	12.5518	12.5518	100	Rejected
23-10-08	66,500	61,600	12.5631	12.5625	600	500
06-11-08	53,571	53,071	13.5313	12.9066	1,700	Rejected
20-11-08	123,667	104,800	13.8549	13.6934	2,500	2,000
04-12-08	153,351	82,550	13.8549	13.8437	4,075	Rejected
18-12-08	87,300	68,450	13.8549	13.8397	6,500	-
02-01-09	77,908	65,908	13.9750	13.8472	1,860	1,360
15-01-09	138,025	45,850	13.8549	13.8545	14,600	10,100
29-01-09	76,385	45,484	13.7624	13.7338	17,200	16,700
12-02-09	57,550	52,350	13.6237	13.4553	62,800	55,450
26-02-09	36,350	6,033	12.6091	12.5629	84,850	32,500
12-03-09	45,200	35,400	11.6908	11.4779	48,855	31,172
26-03-09	16,463	10,463	11.7367	11.6498	25,523	20,223
09-04-09	3,820	3,520	12.6552	12.5336	13,350	11,750
23-04-09	1,600	1,100	12.9775	12.8896	5,200	2,400
07-05-09	5,835	2,600	12.9775	12.9678	5,907	5,307
21-05-09	2,800	Rejected	Rejected	Rejected	5,650	4,025
04-06-09	1,100	Rejected	Rejected	Rejected	10,364	4,564
18-06-09	2,550	Rejected	Rejected	Rejected	15,312	5,231
2009-10						
16-07-09	24,350	10,450	11.4161	11.3064	29,127	12,127
30-07-09	1,975	Rejected	Rejected	Rejected	16,025	Rejected
13-08-09	9,600	Rejected	Rejected	Rejected	13,750	Rejected
27-08-09	2,550	2,550	12.3792	12.3603	10,200	5,231
10-09-09	5,435	5,360	12.5171	12.4347	27,305	27,305
26-09-09	15,245	10,620	12.4929	12.4423	61,673	2,058

6.4 Auction of Government of Pakistan.s Market Treasury Bills (Auction Wise)

(Million Rupees)

AUCTION SETTLEMENT DATE	6 Months Treasury Bills		12 Months Treasury Bills			
	Cutt-off Yield (%)	Weighted Average (%)	Amount Offered	Amount Accepted	Cutt-off Yield (%)	Weighted Average (%)
2008-09						
15-08-08	-	-	58	Rejected	Rejected	Rejected
28-08-08	-	-	-	-	-	-
11-09-08	Rejected	Rejected	-	-	-	-
25-09-08	12.6876	12.6876	50	Rejected	Rejected	Rejected
09-10-08	Rejected	Rejected	-	-	-	-
23-10-08	12.6649	12.6649	500	500	12.7873	12.7873
06-11-08	Rejected	Rejected	1,500	Rejected	Rejected	Rejected
20-11-08	14.0108	14.0108	3,000	Rejected	Rejected	12.7873
04-12-08	14.0100	14.0108	1,000	Rejected	Rejected	Rejected
18-12-08	14.0108	14.0108	-	Rejected	-	-
02-01-09	13.9959	13.9959	3,000	3,000	14.2595	14.2529
15-01-09	14.0108	14.0093	37,357	29,107	14.2857	14.2609
29-01-09	14.0108	13.9958	105,435	22,600	14.2072	14.1589
12-02-09	13.8731	13.7357	256,900	59,800	13.9074	13.8408
26-02-09	12.9828	12.9600	241,023	100,000	13.0044	12.9881
12-03-09	11.7845	11.6684	174,404	53,685	11.8518	11.7781
26-03-09	11.8970	11.7665	87,510	58,260	11.9522	11.8475
09-04-09	12.9828	12.7641	63,030	54,930	13.4928	12.9687
23-04-09	13.0737	12.9524	125,570	69,445	13.2738	13.1351
07-05-09	13.1876	13.1105	128,030	72,745	13.2995	13.2294
21-05-09	13.1876	13.1423	71,372	55,799	13.2995	13.2648
04-06-09	13.1420	13.1395	137,704	55,799	13.2481	13.2297
18-06-09	12.4385	12.0059	113,934	58,318	12.2418	12.0882
2009-10						
16-07-09	11.5151	11.3847	113,260	40,885	11.5392	11.4703
30-07-09	Rejected	Rejected	99,305	49,455	11.8769	11.7514
13-08-09	Rejected	Rejected	144,300	89,600	12.2292	12.1620
27-08-09	12.5517	12.4425	70,700	30,950	12.4442	12.4204
10-09-09	12.7783	12.5785	69,725	23,332	12.4822	12.4628
26-09-09	12.5996	12.5816	61,329	52,984	12.5384	12.4751

Source: Domestic Markets & Monetary Management Department, SBP

6.5 Auction of Pakistan Investment Bonds (PIBs)

(Million Rupees)

AUCTION SETTLEMENT DATE	Tenure	Coupon Rate (%)	Amount Offered	Amount Accepted	Price Accepted = Rs.100	Cut-off Yield Accepted (%)	Weighted Average Yield Accepted (%)
2008-09							
19-02-09	3-Years	11.25	11,175.00	3,977.50	94.40	13.9530	13.8806
	5-Years	11.50	8,650.00	3,023.20	90.68	14.3692	14.3350
	7-Years	11.75	3,925.00	2,735.00	87.51	14.7973	14.7030
	10-Years	12.00	21,760.00	7,821.00	85.28	14.9444	14.8642
	15-Years	12.50	2,480.00	1,180.00	82.85	15.4995	15.3557
	20-Years	13.00	3,500.00	1,500.00	82.67	15.8998	15.7002
	30-Years	13.75	4,500.00	2,000.00	83.73	16.4496	16.2248
16-04-09	3-Years	11.25	5,746.00	3,071.50	96.61	12.9385	12.7670
	5-Years	11.50	6,579.00	2,830.00	95.24	12.9495	12.8620
	7-Years	11.75	4,975.00	2,592.00	94.09	13.1395	13.0505
	10-Years	12.00	27,425.00	14,156.00	93.41	13.2409	13.0672
	15-Years	12.50	1,800.00	63.40	91.92	13.8007	13.8007
	20-Years	13.00	1,300.00	200.00	91.80	14.2492	14.2492
	30-Years	13.75	1,500.00	100.00	94.87	14.4995	14.4995
28-05-09	3-Years	11.25	3,825.00	2,866.50	97.56	12.5018	12.3066
	5-Years	11.50	5,795.00	2,988.00	97.00	12.4151	12.3721
	7-Years	11.75	3,000.00	1,800.00	96.43	12.5807	12.5159
	10-Years	12.00	32,180.00	12,365.50	96.57	12.6303	12.5714
	15-Years	12.50	1,500.00	103.00	94.35	13.3900	13.3900
	20-Years	13.00	200.00	200.00	94.59	13.8004	13.8004
	30-Years	13.75	2,000.00	2,000.00	96.16	14.3003	14.3003
03-09-09	3-Years	11.25	1,895.00	625.00	97.44	12.2961	12.2688
	5-Years	11.50	1,975.00	625.00	96.83	12.3689	12.3374
	7-Years	11.75	1,325.00	825.00	95.75	12.4593	12.4159
	10-Years	12.00	17,165.00	12,590.00	97.19	12.5000	12.4300
	15-Years	12.50	1,430.00	229.00	97.25	12.9295	12.9223
	20-Years	13.00	1,000.00	500.00	97.94	13.2993	13.2993
	30-Years	13.75	1,000.00	500.00	100.00	13.7493	13.7493

Source: Domestic Markets & Monetary Management Department, SBP

6.6 Monthly KIBOR

(Percent per annum)

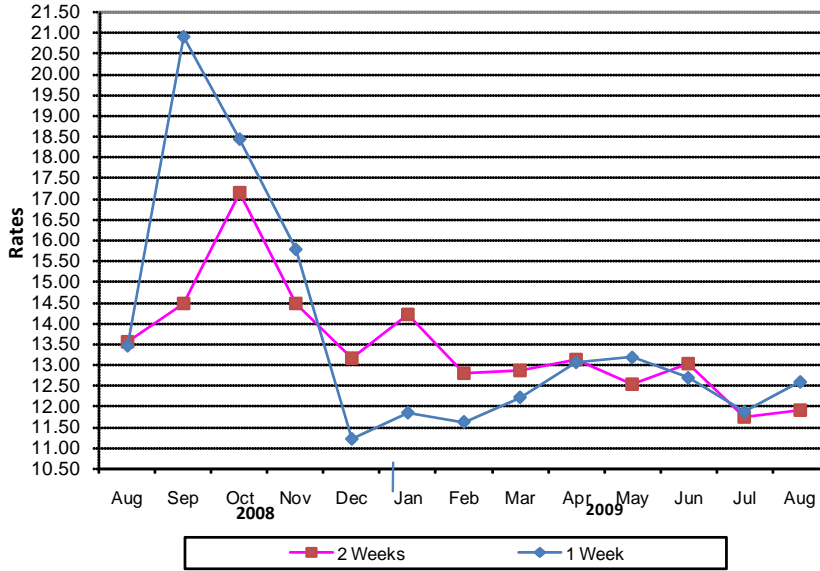
PERIODS			1 Week		2 Weeks		1Month		3 Months		6 Months		9 Months		12 Months	
			Bid	Offer	Bid	Offer	Bid	Offer	Bid	Offer	Bid	Offer	Bid	Offer	Bid	Offer
2008	Sep.	Month Average	12.94	13.94	13.20	13.70	13.31	13.81	13.42	13.92	13.51	14.01	13.63	14.13	13.80	14.30
		End-Month	14.07	15.07	14.04	14.54	14.02	14.52	13.99	14.49	14.02	14.52	14.08	14.58	14.16	14.66
	Oct.	Month Average	13.00	14.00	13.38	13.88	13.74	14.24	14.09	14.59	14.27	14.77	14.37	14.87	14.48	14.98
		End-Month	12.55	13.55	12.91	13.41	13.62	14.12	14.30	14.80	14.60	15.10	14.73	15.23	14.87	15.37
	Nov.	Month Average	10.80	11.48	11.76	12.27	13.78	14.28	15.00	15.35	15.26	15.60	15.34	15.84	15.44	15.94
		End-Month	10.60	11.10	11.26	11.76	13.58	14.08	15.22	15.47	15.42	15.67	15.48	15.98	15.56	16.06
	Dec.	Month Average	9.77	10.27	11.29	11.79	13.78	14.28	15.23	15.48	15.42	15.67	15.50	16.00	15.57	16.07
		End-Month	14.27	14.77	14.02	14.52	14.17	14.67	15.27	15.52	15.45	15.70	15.52	16.02	15.61	16.11
2009	Jan.	Month Average	10.51	11.01	11.32	11.82	12.86	13.36	14.71	14.96	15.21	15.46	15.41	15.91	15.52	16.02
		End-Month	10.01	10.51	10.79	11.29	12.30	12.80	14.16	14.41	14.85	15.10	15.28	15.78	15.44	15.94
	Feb.	Month Average	10.74	11.24	11.31	11.81	11.98	12.48	13.50	13.75	13.95	14.20	14.68	15.18	14.98	15.48
		End-Month	10.34	10.84	10.47	10.97	10.87	11.37	12.14	12.39	12.76	13.01	13.46	13.96	13.93	14.43
	Mar.	Month Average	11.56	12.06	11.52	12.02	11.58	12.08	11.91	12.16	12.29	12.54	13.06	13.56	13.50	14.00
		End-Month	13.46	13.96	12.95	13.45	12.62	13.12	12.52	12.77	12.60	12.85	13.00	13.50	13.41	13.91
	Apr.	Month Average	12.80	13.30	12.81	13.31	12.82	13.32	12.90	13.15	13.02	13.27	13.25	13.75	13.50	14.00
		End-Month	12.96	13.46	12.87	13.37	12.87	13.37	12.99	13.24	13.10	13.35	13.24	13.74	13.45	13.95
	May	Month Average	12.79	13.29	12.88	13.38	12.97	13.47	13.23	13.48	13.29	13.54	13.36	13.86	13.50	14.00
		End-Month	12.83	13.33	12.89	13.39	13.02	13.52	13.47	13.72	13.50	13.75	13.53	14.03	13.59	14.09
	Jun.	Month Average	12.29	12.79	12.55	13.05	12.85	13.35	12.90	13.15	12.93	13.18	13.09	13.59	13.24	13.74
		End-Month	12.99	13.49	12.83	13.33	12.76	13.26	12.52	12.77	12.51	12.76	12.69	13.19	12.81	13.31
	Jul.	Month Average	11.47	11.97	11.51	12.01	11.50	12.00	11.63	11.88	11.80	12.05	12.04	12.54	12.30	12.80
		End-Month	12.10	12.60	12.00	12.50	11.75	12.25	11.68	11.93	11.74	11.99	11.90	12.40	12.20	12.70
	Aug.	Month Average	12.11	12.61	12.06	12.56	12.01	12.51	12.01	12.25	12.02	12.27	12.06	12.56	12.25	12.75
		End-Month	12.16	12.66	12.13	12.63	12.16	12.66	12.29	12.54	12.31	12.56	12.29	12.79	12.34	12.84
	Sep.	Month Average	12.12	12.62	12.18	12.68	12.23	12.73	12.33	12.58	12.37	12.62	12.36	12.86	12.39	12.89
		End-Month	12.36	12.86	12.30	12.80	12.29	12.79	12.35	12.60	12.40	12.65	12.40	12.90	12.43	12.93

KIBOR :Karachi Interbank Offered Rate

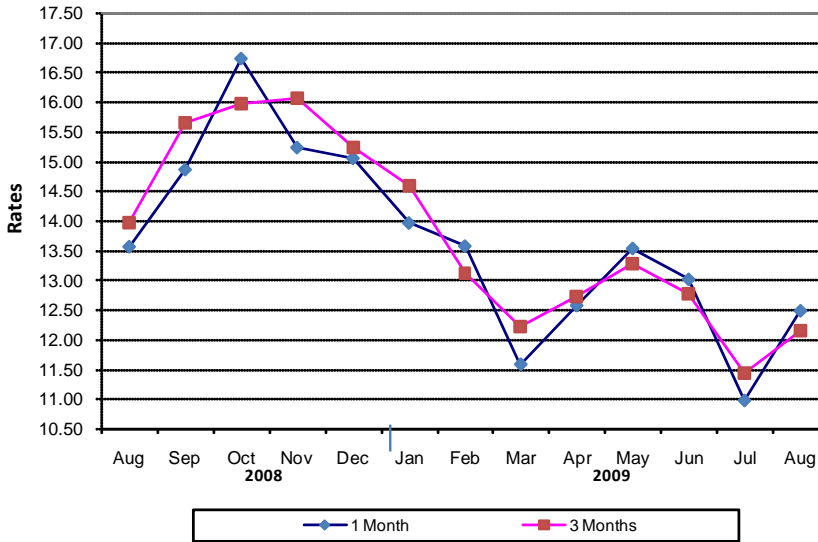
Source: Domestic Markets & Monetary Management Department, SBP

Inter- Bank Average Call Rates

Weekly



Monthly



6.7 Indicative Inter-Bank Average Call Rates

(% Per Annum)

PERIODS	Overnight	1 Week	2 Weeks	1 Month	3 Months	6 Months	1 Year
2008 Aug.	12.93	13.45	13.53	13.56	13.96	-	-
Sep.	16.08	20.88	14.46	14.86	15.65	15.97	-
Oct.	20.03	18.42	17.14	16.73	15.96	-	-
Nov.	13.61	15.77	14.46	15.23	16.06	-	-
Dec.	10.98	11.21	13.16	15.05	15.23	-	-
2009 Jan.	12.05	11.84	14.21	13.96	14.58	14.65	-
Feb.	11.45	11.62	12.80	13.57	13.11	14.03	-
Mar.	12.84	12.21	12.86	11.58	12.22	12.29	-
Apr.	12.65	13.05	13.13	12.57	12.73	13.07	-
May	12.35	13.17	12.52	13.53	13.28	13.36	-
Jun.	11.35	12.68	13.01	13.01	12.77	13.20	-
Jul.	11.59	11.86	11.73	10.97	11.43	12.25	-
Aug.	12.19	12.58	11.91	12.48	12.15	11.43	-

Source: Domestic Markets & Monetary Management Department, SBP

6.8 SBP Rates for Market to Market (M2M) of Major Currencies

MONTH	US Dollar			Euro			Japanese Yen			Pound Sterling		
	Ready	1Week	1 Month	Ready	1Week	1 Month	Ready	1Week	1 Month	Ready	1Week	1 Month
01-Sep-09	82.9627	83.1441	83.7326	119.0017	119.2627	120.1075	0.8910	0.8930	0.8994	135.4988	135.7906	136.7467
02-Sep-09	82.7190	82.8934	83.4762	117.5769	117.8255	118.6547	0.8926	0.8945	0.9010	133.4589	133.7355	134.6721
03-Sep-09	82.8724	83.0342	83.6230	118.4785	118.7122	119.5546	0.8973	0.8991	0.9057	135.2311	135.4911	136.4481
04-Sep-09	82.9402	83.0851	83.6540	118.3681	118.5754	119.3900	0.8939	0.8955	0.9018	135.5409	135.7738	136.6997
05-Sep-09	82.8914	83.0488	83.6024	118.6135	118.8402	119.6324	0.8914	0.8932	0.8993	135.9130	136.1671	137.0693
07-Sep-09	82.9109	83.0772	83.6396	118.8983	119.1386	119.9441	0.8891	0.8909	0.8971	136.0941	136.3634	137.2822
08-Sep-09	82.9206	83.0752	83.6316	119.6669	119.8899	120.6931	0.8981	0.8998	0.9060	136.6905	136.9415	137.8553
09-Sep-09	82.9405	83.0978	83.6564	120.0605	120.2883	121.0972	0.8969	0.8986	0.9048	136.5491	136.8049	137.7203
10-Sep-09	82.8413	82.9782	83.5521	120.7494	120.9516	121.7886	0.8995	0.9010	0.9074	136.8207	137.0430	137.9859
11-Sep-09	82.8640	83.0197	83.5930	121.0394	121.2669	122.1044	0.9112	0.9130	0.9194	138.4409	138.6969	139.6453
12-Sep-09	82.9151	83.1152	83.6271	120.8860	121.1794	121.9259	0.9145	0.9167	0.9225	138.2858	138.6148	139.4574
14-Sep-09	82.8338	83.0728	83.5479	120.5521	120.8997	121.5919	0.9144	0.9171	0.9225	137.4212	137.8136	138.5926
15-Sep-09	82.7685	82.9808	83.4888	120.9703	121.2822	122.0236	0.9085	0.9109	0.9166	137.8799	138.2293	139.0650
16-Sep-09	82.8118	82.9853	83.5085	121.6630	121.9181	122.6867	0.9158	0.9178	0.9237	136.4242	136.7060	137.5631
17-Sep-09	82.9973	83.1522	83.7134	122.2467	122.4751	123.3025	0.9151	0.9169	0.9232	137.2401	137.4925	138.4160
18-Sep-09	83.0094	83.1501	83.7080	121.8038	122.0105	122.8290	0.9102	0.9118	0.9180	135.5958	135.8216	136.7286
19-Sep-09	83.0077	83.1609	83.7198	122.0504	122.2775	123.0985	0.9078	0.9095	0.9158	134.8294	135.0735	135.9751
24-Sep-09	82.9572	83.1028	83.6592	122.3163	122.5306	123.3507	0.9156	0.9173	0.9235	134.4363	134.6678	135.5609
25-Sep-09	83.0068	83.1504	83.6922	121.8996	122.1099	122.9044	0.9165	0.9182	0.9243	133.0474	133.2732	134.1326
26-Sep-09	83.0575	83.2124	83.7571	121.9201	122.1472	122.9446	0.9252	0.9270	0.9332	132.3106	132.5540	133.4111
28-Sep-09	83.0405	83.1876	83.7394	121.4509	121.6651	122.4712	0.9276	0.9293	0.9356	131.9265	132.1559	133.0225
29-Sep-09	83.1674	83.3273	83.8685	121.3704	121.6029	122.3922	0.9266	0.9284	0.9346	131.9742	132.2229	133.0741
30-Sep-09	83.1482	83.3021	83.8444	121.5253	121.7496	122.5413	0.9285	0.9303	0.9365	133.6275	133.8697	134.7266

6.8 SBP Rates for Market to Market (M2M) of Major Currencies

MONTH	Swiss Frank			Australian Dollar			Saudi Arabian Riyal			Kuwaiti Dinnar		
	Ready	1Week	1 Month	Ready	1Week	1 Month	Ready	1Week	1 Month	Ready	1Week	1 Month
01-Sep-09	78.4740	78.6497	79.2245	69.5518	69.6667	70.0227	22.1219	22.1708	22.3290	289.0183	289.6352	291.6497
02-Sep-09	77.5176	77.6857	78.2491	68.6113	68.7204	69.0728	22.0575	22.1042	22.2621	287.8987	288.4693	290.3923
03-Sep-09	78.2073	78.3644	78.9371	69.4968	69.5964	69.9665	22.0969	22.1406	22.2995	288.4024	288.9293	290.8727
04-Sep-09	78.1018	78.2427	78.7943	69.8315	69.9165	70.2735	22.1159	22.1541	22.3083	288.9904	289.4598	291.3454
05-Sep-09	78.1884	78.3413	78.8791	70.5199	70.6153	70.9614	22.1020	22.1445	22.2940	288.4588	288.9699	290.7910
07-Sep-09	78.4176	78.5794	79.1284	70.8598	70.9645	71.3199	22.1075	22.1525	22.3043	288.5365	289.0636	290.9303
08-Sep-09	78.8144	78.9654	79.5098	71.4817	71.5784	71.9141	22.1104	22.1523	22.3032	288.7710	289.2539	291.1151
09-Sep-09	79.1455	79.2998	79.8499	71.1339	71.2323	71.5737	22.1154	22.1585	22.3096	289.0870	289.6054	291.5211
10-Sep-09	79.6704	79.8061	80.3725	71.1110	71.1914	71.5597	22.0892	22.1269	22.2814	288.7965	289.2476	291.1831
11-Sep-09	79.9537	80.1081	80.6771	71.5323	71.6302	71.9988	22.0953	22.1379	22.2923	289.1683	289.6850	291.6203
12-Sep-09	79.9143	80.1118	80.6208	71.5350	71.6702	71.9875	22.1089	22.1634	22.3015	289.3466	290.0184	291.7394
14-Sep-09	79.7053	79.9395	80.4115	71.0300	71.1973	71.4779	22.0881	22.1524	22.2818	289.1232	289.9320	291.5546
15-Sep-09	79.7999	80.0089	80.5132	71.3175	71.4627	71.7611	22.0707	22.1282	22.2655	288.8953	289.6207	291.3432
16-Sep-09	80.1353	80.3070	80.8274	72.1125	72.2250	72.5445	22.0817	22.1288	22.2701	289.4507	290.0357	291.8041
17-Sep-09	80.4510	80.6053	81.1642	72.6433	72.7394	73.0994	22.1317	22.1739	22.3260	290.0481	290.5732	292.4895
18-Sep-09	80.3420	80.4825	81.0378	72.0646	72.1477	72.5026	22.1349	22.1733	22.3245	289.8777	290.3530	292.2560
19-Sep-09	80.5587	80.7121	81.2703	72.0133	72.1080	72.4634	22.1345	22.1762	22.3283	290.0896	290.6097	292.5272
24-Sep-09	80.8905	81.0370	81.5946	72.3553	72.4379	72.7992	22.1204	22.1601	22.3109	289.8171	290.3001	292.2030
25-Sep-09	80.6322	80.7764	81.3168	72.1204	72.2066	72.5494	22.1337	22.1732	22.3203	290.1828	290.6712	292.5174
26-Sep-09	80.7716	80.9275	81.4721	72.1147	72.2105	72.5546	22.1472	22.1898	22.3382	289.8030	290.3307	292.1928
28-Sep-09	80.3878	80.5353	81.0830	71.7387	71.8272	72.1745	22.1433	22.1838	22.3341	289.7034	290.2038	292.0903
29-Sep-09	80.3240	80.4821	81.0194	72.6176	72.7193	73.0466	22.1771	22.2209	22.3685	290.1611	290.6924	292.5356
30-Sep-09	80.5115	80.6644	81.2047	73.2079	73.3044	73.6385	22.1714	22.2139	22.3606	290.2512	290.7528	292.6303

PDs: Primary Dealers

Source: Domestic Markets & Monetary Management Department, SBP

6.9 Secondary Market Transactions in Government Securities

(Billion Rupees)

SECURITIES/TRANSACTIONS	2008					2009								
	Aug.	Sep.	Oct.	Nov.	Dec.	Jan.	Feb.	Mar.	Apr.	May	Jun	Jul.	Aug	
PIBs														
Purchases	72.0	120.3	106.9	137.9	83.8	39.2	44.8	30.3	83.7	80.2	59.0	43.1	62.0	
Non Banks	Repo	0.2	0.6	1.3	0.2	8.0	1.7	0.3	1.5	2.7	5.4	1.2	1.1	5.4
	Outright	3.2	0.5	1.1	0.2	2.2	0.3	7.4	2.0	6.9	5.9	1.4	3.2	1.5
Banks/PDs	Repo	46.9	40.9	47.6	54.7	40.7	26.0	22.3	14.5	20.5	8.2	25.9	23.0	16.1
	Outright	3.0	1.9	2.2	1.0	4.7	0.3	14.8	6.2	21.1	12.4	6.3	12.2	8.8
SBP	Repo	18.8	76.5	54.7	81.8	28.2	10.9	-	6.0	32.5	48.3	24.2	3.6	30.2
	Outright	-	-	-	-	-	-	-	-	-	-	-	-	-
Sales	72.0	120.3	106.9	137.9	83.8	39.2	44.8	30.3	83.7	80.2	59.0	43.1	62.0	
Non Banks	Repo	9.4	11.1	11.4	7.2	7.3	3.4	4.0	2.1	2.5	0.5	4.6	3.9	0.9
	Outright	0.3	0.3	-	0.5	2.0	0.1	2.7	1.4	1.0	1.3	1.0	0.5	0.3
Banks/PDs	Repo	56.4	107.0	92.2	129.5	69.6	35.3	18.6	19.9	53.2	61.4	46.7	23.8	50.7
	Outright	5.8	1.9	3.3	0.7	4.9	0.6	19.5	6.8	27.0	16.9	6.7	14.9	10.0
SBP	Repo	-	-	-	-	-	-	-	-	-	-	-	-	-
	Outright	-	-	-	-	-	-	-	-	-	-	-	-	-
Net Position		-	-	-	-	-	-	-	-	-	-	-	-	-
Treasury Bills														
Purchases	962.6	1,099.3	1,127.6	1,259.8	977.3	1,181.8	1,205.1	1,293.0	1,446.9	1,289.5	1,291.5	1,324.5	1,477.2	
Non Banks	Repo	3.0	3.1	2.5	8.7	2.6	14.3	6.4	17.5	23.1	28.4	12.5	44.6	84.7
	Outright	8.4	6.3	1.8	20.3	21.1	29.6	11.3	28.4	40.5	26.4	27.5	21.4	20.3
Banks/PDs	Repo	763.2	703.1	912.0	1,106.1	808.3	964.6	1,017.1	996.7	969.0	933.1	1,007.3	1,069.3	992.6
	Outright	86.6	43.0	54.4	70.9	107.8	145.8	164.1	126.5	121.8	107.9	103.4	122.9	126.4
SBP	Repo	101.5	343.8	157.0	53.8	37.6	27.5	6.2	123.9	292.6	193.6	140.8	66.3	233.4
Sales	962.6	1,099.3	1,127.6	1,259.8	977.3	1,181.8	1,205.1	1,293.0	1,446.9	1,289.5	1,291.5	1,324.5	1,477.4	
Non Banks	Repo	47.4	42.0	49.6	31.2	51.8	72.0	78.7	72.4	95.4	44.7	75.9	45.0	24.9
	Outright	0.2	0.1	0.0	0.0	1.2	6.2	1.8	4.3	2.3	4.3	2.9	7.9	9.5
Banks/PDs	Repo	779.1	981.0	985.9	948.2	685.0	755.5	808.9	1,018.5	1,174.2	1,094.6	969.8	981.7	1,267.2
	Outright	94.8	49.3	56.1	91.1	127.6	169.1	173.6	126.5	160.0	130.1	128.0	136.5	157.2
SBP	Repo	41.2	27.0	36.0	189.2	111.6	178.9	142.1	71.3	15.0	15.8	114.9	153.6	18.7
Net Position		-	-	-	-	-	-	-	-	-	-	-	-	-