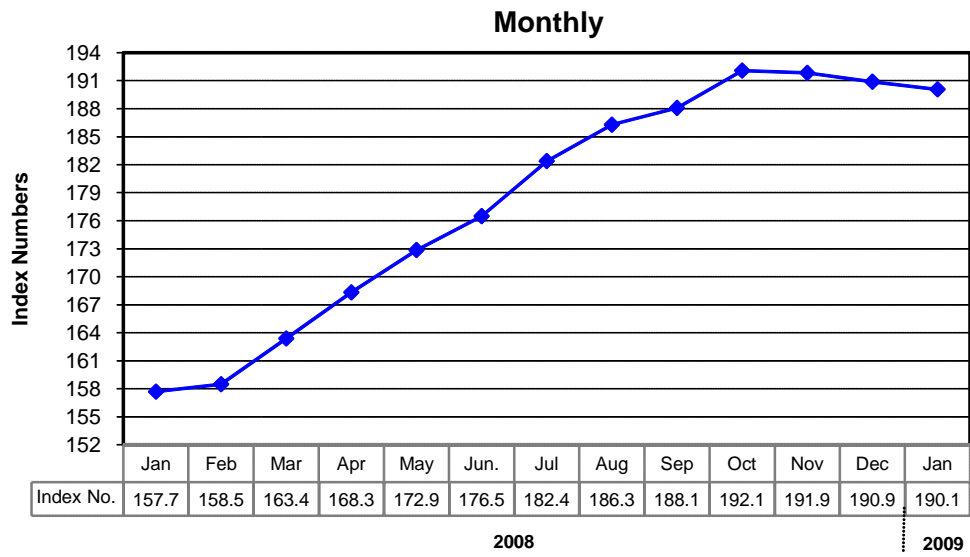
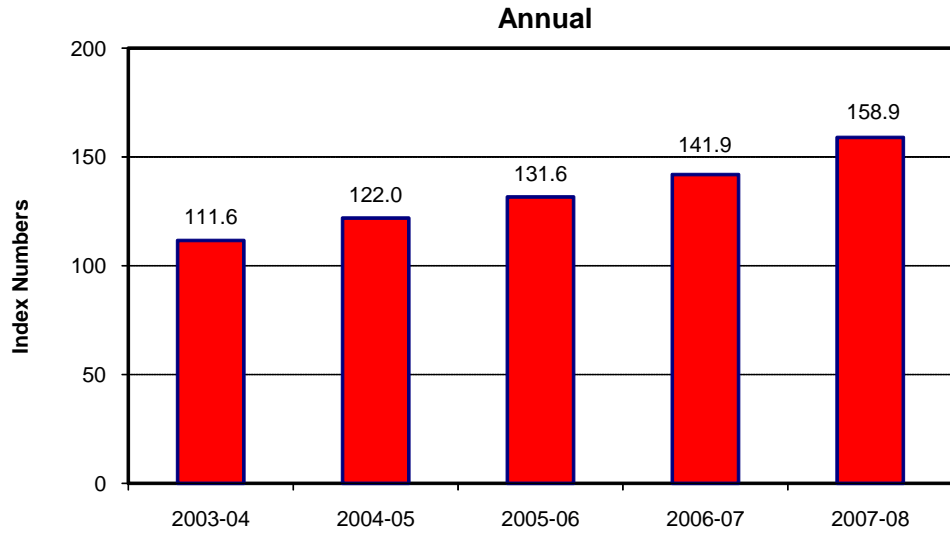


## 8.1 Combined Consumer Price Index Numbers by Commodity Groups - All Urban (2000-01=100)

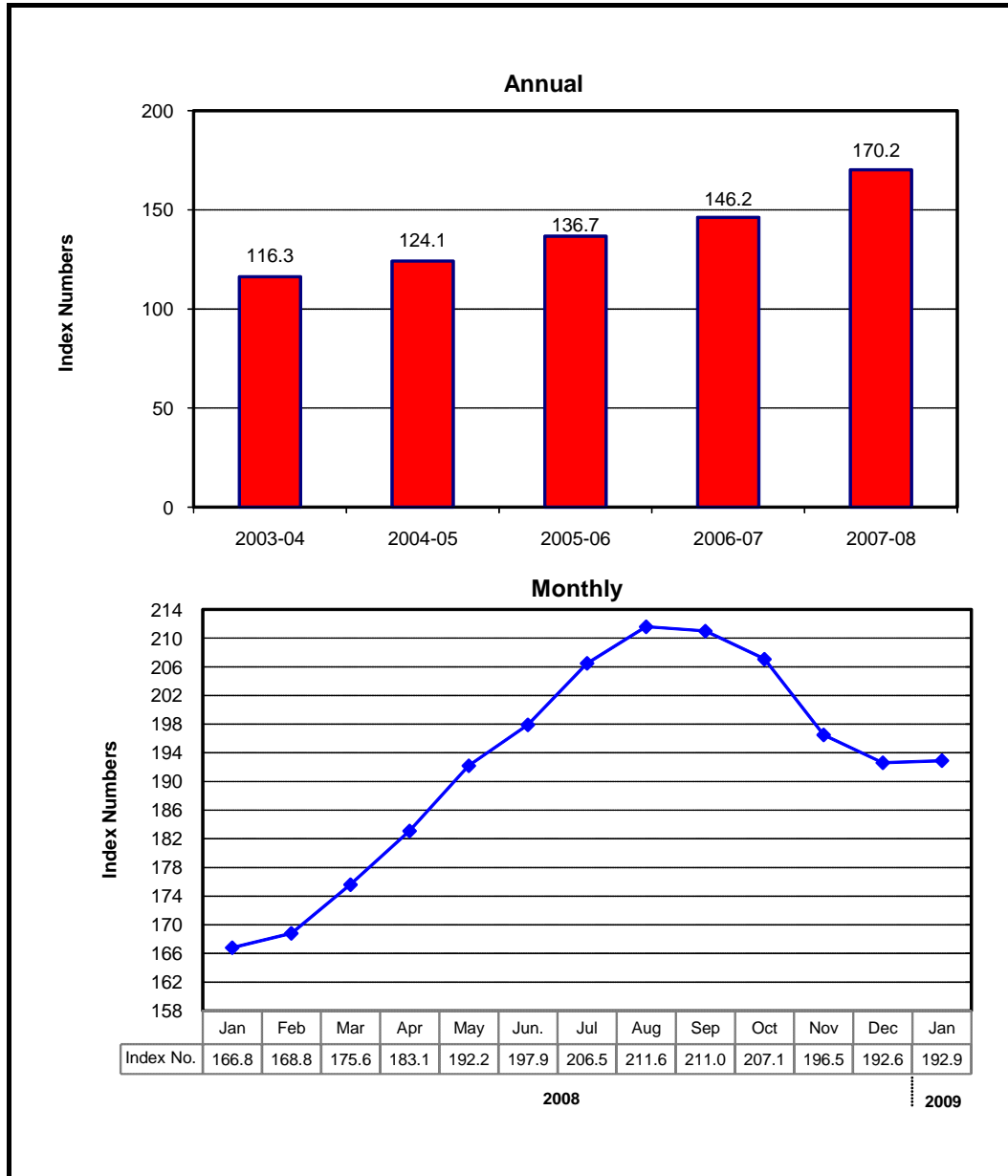
Year / Month		General	Food and Beverages	Apparel Textile and Footwear	House Rent	Fuel and Lighting	Household Furniture and Equipment	Transport and Communication	Recreation & Entertainment	Education	Cleaning Laundry and Personal Appearance	Medicare
2003-04		<b>111.63</b>	111.74	109.69	102.20	121.30	110.68	115.43	106.08	114.19	111.29	106.99
2004-05		<b>121.98</b>	125.69	112.98	120.42	125.77	117.34	125.11	105.93	117.55	115.90	107.94
2005-06		<b>131.64</b>	134.39	117.58	132.36	137.09	123.41	145.90	105.65	125.03	119.49	110.66
2006-07		<b>141.87</b>	148.21	123.70	141.21	149.43	131.64	148.96	105.76	133.82	124.53	120.91
2007-08		<b>158.90</b>	174.36	133.79	154.47	158.48	141.08	155.55	107.86	140.88	138.28	132.23
2008	Jan.	<b>157.73</b>	172.96	133.03	154.61	160.04	140.44	148.21	106.31	139.51	137.33	130.61
	Feb.	<b>158.50</b>	172.16	133.42	156.25	160.45	141.41	153.16	106.31	139.60	141.52	131.34
	Mar.	<b>163.38</b>	180.52	135.89	158.04	164.25	142.91	158.04	106.51	139.85	145.69	131.46
	Apr.	<b>168.34</b>	188.37	138.44	159.79	164.27	145.33	171.59	106.60	142.87	146.15	132.57
	May.	<b>172.87</b>	196.28	139.96	161.66	165.40	147.52	173.39	116.10	147.41	147.86	141.43
	Jun.	<b>176.50</b>	201.12	141.07	163.89	168.25	148.82	181.87	116.35	149.77	150.02	141.76
	Jul.	<b>182.39</b>	206.85	146.84	166.34	182.14	151.13	200.61	117.96	151.59	151.98	141.93
	Aug.	<b>186.29</b>	212.21	148.78	169.02	183.62	153.45	205.95	118.27	159.46	154.34	142.06
	Sep.	<b>188.10</b>	214.13	150.58	171.70	185.55	155.01	205.24	118.80	160.26	155.94	143.40
	Oct.	<b>192.08</b>	221.44	151.62	174.44	185.90	156.97	204.43	119.17	160.80	159.76	145.96
	Nov.	<b>191.85</b>	218.12	152.74	177.22	203.62	159.08	188.88	119.47	161.90	161.71	146.10
	Dec.	<b>190.90</b>	214.71	153.35	179.99	202.54	159.97	185.00	119.61	163.18	162.03	146.53
2009	Jan.	<b>190.09</b>	210.33	153.52	182.77	203.09	160.97	185.59	119.69	163.31	164.00	149.37

Source : Federal Bureau of Statistics

## Index Numbers of Consumer Prices (2000 - 01=100)



## Index Numbers of Wholesale Prices (2000- 01=100)



## 8.2 Index Numbers of Wholesale Prices by Commodity Groups (2000-01=100 )

Year/ Month	General	Food	Raw Materials	Fuel,Lighting and Lubricants	Manufactures	Building Materials
2003-04	<b>116.29</b>	112.98	135.12	119.23	111.83	126.46
2004-05	<b>124.14</b>	125.03	110.44	138.01	113.05	143.79
2005-06	<b>136.68</b>	133.78	121.93	174.57	115.39	144.18
2006-07	<b>146.18</b>	145.67	138.85	184.10	119.91	151.93
2007-08	<b>170.15</b>	173.27	156.57	223.34	128.33	177.18
2008						
Jan.	<b>166.75</b>	172.50	155.02	211.06	127.50	169.43
Feb.	<b>168.81</b>	172.40	155.08	218.11	129.47	174.18
Mar.	<b>175.55</b>	177.57	159.67	233.17	132.10	187.03
Apr.	<b>183.09</b>	184.07	161.68	252.61	132.95	201.26
May.	<b>192.19</b>	194.26	166.70	271.03	135.07	207.80
Jun.	<b>197.92</b>	199.37	175.92	281.15	136.91	216.59
Jul.	<b>206.53</b>	206.37	179.02	303.30	139.37	227.27
Aug.	<b>211.60</b>	211.91	189.96	306.21	144.00	229.47
Sep.	<b>211.02</b>	213.62	186.88	299.99	145.12	226.25
Oct.	<b>207.08</b>	219.58	176.03	271.12	145.01	226.74
Nov.	<b>196.50</b>	215.97	173.65	232.07	140.24	224.81
Dec.	<b>192.62</b>	210.77	169.18	231.18	137.80	213.13
2009						
Jan.	<b>192.91</b>	208.80	180.44	235.66	137.00	203.89

Source : Federal Bureau of Statistics

### 8.3 Combined Sensitive Price Indicator (SPI) by Income Groups (2000-01 =100)

Year/ Month	INCOME GROUP					
	Group-I	Group-II	Group-III	Group-IV	Combined	
	Up to Rs.3000	Rs.3001 to Rs.5000	Rs.5001 to Rs.12000	Above Rs.12000		
2003-04	114.38	114.88	114.32	114.58	<b>113.93</b>	
2004-05	127.59	127.50	127.01	127.35	<b>126.52</b>	
2005-06	136.56	136.15	135.99	139.80	<b>136.43</b>	
2006-07	151.34	150.44	149.97	152.32	<b>149.29</b>	
2007-08	176.77	175.15	172.60	170.45	<b>170.55</b>	
2008	Jan.	176.66	174.65	171.63	167.85	<b>168.24</b>
	Feb.	174.31	172.38	169.88	167.24	<b>166.94</b>
	Mar.	180.27	178.26	175.95	174.61	<b>173.96</b>
	Apr.	190.14	188.44	184.97	182.57	<b>183.29</b>
	May.	200.42	198.16	193.46	189.45	<b>191.49</b>
	Jun.	203.55	201.13	196.31	191.79	<b>194.10</b>
	Jul.	211.22	208.41	204.97	202.67	<b>202.94</b>
	Aug.	216.17	212.99	210.75	210.09	<b>208.85</b>
	Sep.	217.27	213.96	211.75	210.65	<b>209.52</b>
	Oct.	223.14	219.50	216.66	213.47	<b>213.37</b>
	Nov.	220.13	217.61	215.14	210.49	<b>211.03</b>
	Dec.	216.40	215.31	213.34	206.52	<b>207.99</b>
2009	Jan.	213.32	211.79	209.40	203.17	<b>204.02</b>

Note: SPI figures revised as it is computed on 53 items instead of 51 items.

Source : Federal Bureau of Statistics

## 8.4 Bullion Prices

(Rupees per 10 grams)

Year / Month	GOLD TEZABI		SILVER TEZABI		
	Karachi	Lahore	Karachi	Lahore	
2003-04	7,328	7,337	92	111	
2004-05	8,216	8,238	118	138	
2005-06	10,317	10,307	180	176	
2006-07	12,619	12,603	228	231	
2007-08	16,695	16,635	306	306	
2008	Jan.	17,562	17,473	309	302
	Feb.	18,681	18,599	345	340
	Mar.	19,732	19,694	400	416
	Apr.	19,109	19,048	361	359
	May.	19,620	19,621	362	359
	Jun.	19,633	19,616	358	359
	Jul.	21,413	21,304	388	385
	Aug.	20,502	20,499	367	368
	Sep.	20,304	20,280	358	351
	Oct.	22,034	21,832	331	322
	Nov.	20,043	19,956	293	303
	Dec.	20,540	20,819	282	286
2009	Jan.	21,681	21,752	297	298

Figures are monthly / yearly averages

Source: Daily Business Recorder