

## 6.1 Government of Pakistan Treasury Bills

(Million Rupees)

PERIOD	3 months Government of Pakistan Treasury Bills					6 months Government of Pakistan Treasury Bills			
	Discount		Discharged	Discount Paid	Outstanding Balance	Discount			
	Issue	Allowed				Issue	Allowed	Discharged	
2004 Jun.	-	-	20,926.6	73.4	30,356.2	-	-	297.6	
Dec.	15,113.8	136.2	17,332.4	117.6	61,089.6	-	-	-	
2005 Jun.	74,533.5	1,237.8	76,332.8	867.2	254,698.5	59,097.9	273.1	-	
Dec.	2,734.1	50.9	8,280.6	154.4	14,615.3	1,728.9	71.1	59,097.9	
2006 Jun.	1,800.8	34.2	12,109.3	225.7	2,095.3	623.8	26.2	1,728.9	
Dec.	793.6	15.8	27,846.2	553.8	20,995.0	5,124.8	225.2	623.8	
2007 Jun.	-	-	5,147.5	102.5	3,001.7	299.7	13.3	5,124.8	
Dec.	7,912.0	164.8	-	-	8,026.0	17,332.5	793.6	300.0	
2008 Jun.	65,661.5	1,668.2	489.3	10.8	90,645.9	3,441.3	192.4	17,332.5	
Dec.	146,373.8	4,662.8	49,133.6	1,420.6	412,083.6	6,169.5	431.0	3,441.3	
2008 Apr.	10,001.4	220.1	116.4	2.4	30,041.8	11,777.0	579.5	4,792.0	
May.	14,983.0	336.8	19,551.0	423.0	25,473.7	3,470.7	171.2	4,905.3	
Jun.	65,661.5	1,668.2	489.3	10.8	90,645.9	3,441.3	192.4	17,332.5	
Jul.	165,193.3	4,444.0	21,251.1	470.4	234,588.0	-	-	1,414.5	
Aug.	72,051.4	2,027.2	57,333.3	1,440.6	249,306.3	-	-	15,643.8	
Sep.	49,133.6	1,420.6	86,916.5	2,286.8	211,523.4	301.9	19.1	7,799.5	
Oct.	111,148.3	3,229.8	90,338.4	2,471.4	239,010.9	1,553.0	98.1	11,777.0	
Nov.	154,561.5	4,774.9	72,051.4	2,027.2	314,843.4	1,892.3	132.2	3,470.7	
Dec.	146,373.8	4,662.8	49,133.6	1,420.6	412,083.6	6,169.5	431.0	3,441.3	
2009 Jan.	153,983.5	4,871.7	164,080.9	4,802.0	401,986.2	26,332.9	1,837.1	-	
Feb.	56,651.6	1,742.2	181,630.0	5,751.5	277,007.7	82,444.1	5,528.5	-	
Mar.	44,726.9	1,185.5	130,408.7	4,130.4	191,325.9	48,560.3	2,834.7	301.9	
Apr.	5,955.8	173.8	89,947.4	2,855.3	107,334.4	13,301.3	848.7	1,553.0	

Note : Six months Government of Pakistan Treasury Bills restarted w. e. f. June 1998 and 3 & 12 months Government of Pakistan Treasury Bills restarted w.e.f July 1998.

## 6.1 Government of Pakistan Treasury Bills

(Million Rupees)

PERIOD	6 months Government of Pakistan Treasury Bills		12 months Government of Pakistan Treasury Bills (Auctioned and Rollover)					Outstanding Balance	
	Discount Paid	Outstanding Balance	Issue	Discount Allowed	Discharged	Discount Paid			
2004	Jun.	2.4	78,909.1	-	-	25,403.2	596.8	236,420.9	
	Dec.	-	118,457.3	-	-	196.1	3.9	91,601.7	
2005	Jun.	-	132,708.3	48,360.1	1,229.2	-	-	65,798.8	
	Dec.	2,335.8	59,159.9	82,036.8	7,174.7	-	-	329,870.2	
2006	Jun.	71.1	7,934.1	28,686.2	2,513.8	48,360.1	4,039.9	422,647.0	
	Dec.	26.2	43,288.7	47,687.7	4,282.3	82,150.5	7,184.7	344,177.0	
2007	Jun.	225.2	45,252.8	49,979.6	4,550.4	28,686.2	2,513.8	607,844.1	
	Dec.	13.3	31,126.8	26,706.0	2,504.0	47,687.7	4,282.3	686,517.2	
2008	Jun.	793.6	43,546.7	9,559.4	1,094.0	49,979.6	4,550.4	402,783.9	
	Dec.	192.4	9,916.8	-	-	26,706.0	2,503.9	136,100.5	
2008	Apr.	218.5	58,872.5	16,546.4	1,670.8	75,813.9	6,856.1	453,119.4	
	May.	223.7	57,437.9	15,896.9	1,614.1	25,812.1	2,340.9	443,204.2	
	Jun.	793.6	43,546.7	9,559.4	1,094.0	49,979.6	4,550.4	402,783.9	
	Jul.	65.5	42,132.2	5,495.6	647.4	115,818.9	10,598.8	292,460.6	
	Aug.	756.2	26,488.5	-	-	28,429.7	2,670.3	264,030.9	
	Sep.	382.0	18,990.9	-	-	42,788.8	4,010.7	221,242.2	
	Oct.	579.2	9,247.7	443.5	0.6	20,067.2	1,880.5	221,507.6	
	Nov.	171.2	7,188.5	1.2	0.2	38,813.0	3,636.1	162,806.6	
	Dec.	192.4	9,916.8	-	-	26,706.0	2,503.9	136,100.5	
	2009	Jan.	-	36,239.6	48,904.3	6,933.5	20,641.3	1,947.0	164,363.5
		Feb.	-	118,863.7	141,104.1	18,723.3	47,039.1	4,660.8	258,428.5
		Mar.	19.1	166,942.2	99,893.9	11,769.5	20,477.2	2,057.9	337,845.2
Apr.		98.1	178,690.4	111,192.5	14,484.5	16,546.4	1,670.8	432,491.4	

Source: Financial Markets Strategy & Conduct Department, SBP

## 6.2 Sale / Purchase of Treasury Bills under Open Market Operation by SBP with Banks

### SALE

(Billion Rupees )

PERIOD	2004-05		2005-06		2006-07		2007-08		2008-09	
	Bid Amount		Bid Amount		Bid Amount		Bid Amount		Bid Amount	
	Offered	Accepted	Offered	Accepted	Offered	Offered	Accepted	Accepted	Accepted	Accepted
July	74.3	71.5	56.5	46.8	159.3	133.5	187.8	141.8	508.0	367.9
August	66.9	57.9	86.0	65.2	131.9	105.7	272.9	228.3	71.1	41.2
September	13.2	4.0	83.9	69.7	107.0	87.0	81.1	71.3	15.7	9.5
October	61.8	52.6	14.0	9.0	92.9	81.3	-	-	44.8	36.0
November	59.9	42.4	32.0	26.5	71.5	61.9	163.8	124.7	413.5	223.7
December	103.2	95.2	159.2	95.9	124.7	117.2	86.8	69.0	184.3	124.6
January	15.4	6.5	82.5	67.1	69.6	60.2	74.7	52.3	280.5	178.9
February	60.8	56.6	80.5	64.7	23.9	11.7	95.4	70.9	238.6	142.1
March	83.7	60.8	44.5	41.1	50.2	42.1	113.2	77.7	89.1	71.3
April	90.9	49.6	-	-	119.0	88.8	160.2	129.9	37.8	24.3
May	73.1	49.2	6.6	4.0	27.0	11.4	126.4	80.6		
June	95.5	64.9	235.4	153.8	161.8	135.3	290.6	200.4		
<b>Average</b>										
per month	66.6	50.9	73.4	53.7	94.9	78.0	137.7	103.9	188.3	121.9
per day	2.2	1.7	2.5	1.8	3.2	2.6	4.6	3.5	6.3	4.1

### PURCHASE

PERIOD	2004-05		2005-06		2006-07		2007-08		2008-09	
	Amount		Amount		Amount		Amount		Amount	
	Offered	Injected	Offered	Injected	Offered	Injected	Offered	Injected	Offered	Injected
July	-	-	-	-	-	-	-	-	-	-
August	-	-	11.2	8.3	27.2	21.2	-	-	117.0	78.2
September	-	-	-	-	-	-	-	-	259.2	176.4
October	16.1	14.0	66.9	38.5	-	-	40.9	40.9	214.8	187.3
November	-	-	123.6	74.1	-	-	-	-	39.9	39.4
December	-	-	-	-	31.3	25.8	-	-	15.9	11.2
January	40.3	21.3	139.6	111.5	-	-	41.6	27.5	-	-
February	-	-	60.6	42.8	-	-	-	-	-	-
March	-	-	12.7	10.7	51.1	25.0	102.7	82.1	85.1	60.0
April	-	-	210.5	96.9	-	-	50.1	40.1	378.4	176.8
May	20.0	9.0	91.4	46.7	-	-	63.6	41.8		
June	-	-	-	-	-	-	-	-		
<b>Average</b>										
per month	6.4	3.7	59.7	35.8	9.1	6.0	24.9	19.4	111.0	72.9
per day	0.2	0.1	2.0	1.2	0.3	0.2	0.8	0.7	3.7	2.4

Source: Domestic Markets & Monetary Management Department, SBP

## 6.3 SBP 3-Day Repo Facility MTBs / FIBs / PIBs (Outstanding)

### Cash Accommodation

(Million Rupees)

PERIOD	2003-04	2004-05	2005-06	2006-07	2007-08	2008-09
July	-	700	23,861	38,883	111,817	24,227
August	-	10,600	48,241	19,032	68,490	42,861
September	-	84,760	45,245	66,715	121,825	254,378
October	10,440	63,324	116,512	27,670	575,455	55,638
November	400	14,098	91,780	77,702	126,045	149,228
December	-	-	4,520	35,573	427,940	105,625
January	1,350	115,134	29,760	7,718	129,107	66,000
February	8,340	-	12,032	34,435	80,755	6,150
March	-	21,695	47,815	75,895	89,772	69,930
April	24,745	800	243,238	51,327	51,609	71,257
May	1,245	70,787	55,246	174,980	93,458	
June	-	139,550	44,019	76,830	96,792	
<b>Average</b>						
per month	3,877	43,454	63,522	57,230	164,422	84,529
per day	129	1,448	2,117	1,908	5,481	2,818

### SBP 3-Day Repo Rates

(Percent per annum)

PERIOD	2003-04	2004-05	2005-06	2006-07	2007-08	2008-09
July	7.50	7.50	9.00	9.50	9.50	13.00
August	7.50	7.50	9.00	9.50	10.00	13.00
September	7.50	7.50	9.00	9.50	10.00	13.00
October	7.50	7.50	9.00	9.50	10.00	13.00
November	7.50	7.50	9.00	9.50	10.00	15.00
December	7.50	7.50	9.00	9.50	10.00	15.00
January	7.50	7.50	9.00	9.50	10.00	15.00
February	7.50	7.50	9.00	9.50	10.50	15.00
March	7.50	7.50	9.00	9.50	10.50	15.00
April	7.50	9.00	9.00	9.50	10.50	14.00
May	7.50	9.00	9.00	9.50	12.00	
June	7.50	9.00	9.00	9.50	12.00	

Note: Rates applicable against T-bills & FIBs, PIBs

Source: Domestic Markets & Monetary Management Department, SBP

## 6.4 Auction of Government of Pakistan Market Treasury Bills (Auction Wise)

(Million Rupees)

AUCTION SETTLEMENT DATE	3 Months Treasury Bills				6 Months Treasury Bills	
	Amount Offered	Amount Accepted	Cut-off Yield ( % )	Weighted Average ( % )	Amount Offered	Amount Accepted
<b>2007-08</b>						
10-04-08	12,900	10,100	9.5925	9.5610	15,640	12,240
24-04-08	5,850	Rejected	Rejected	Rejected	1,009	105
08-05-08	11,500	11,500	9.7746	9.6679	3,604	3,604
22-05-08	4,104	2,504	9.9741	9.9506	-	-
05-06-08	54,954	54,954	11.2331	10.9769	4,300	3,300
19-06-08	15,901	12,376	11.4161	11.3163	330	330
<b>2008-09</b>						
03-07-08	79,328	76,828	11.5534	11.4512	-	-
17-07-08	50,504	50,504	11.7825	11.6528	-	-
31-07-08	92,270	41,070	12.1954	12.1688	-	-
15-08-08	40,350	37,000	12.2959	12.2205	-	-
28-08-08	35,702	35,702	12.5631	12.3874	-	-
11-09-08	45,796	14,759	12.5631	12.5631	650	Rejected
25-09-08	60,245	34,945	12.5631	12.5631	771	321
09-10-08	71,755	52,605	12.5518	12.5518	100	Rejected
23-10-08	66,500	61,600	12.5631	12.5625	600	500
06-11-08	53,571	53,071	13.5313	12.9066	1,700	Rejected
20-11-08	123,667	104,800	13.8549	13.6934	2,500	2,000
04-12-08	153,351	82,550	13.8549	13.8437	4,075	Rejected
18-12-08	87,300	68,450	13.8549	13.8397	6,500	-
02-01-09	77,908	65,908	13.9750	13.8472	1,860	1,360
15-01-09	138,025	45,850	13.8549	13.8545	14,600	10,100
29-01-09	76,385	45,484	13.7624	13.7338	17,200	16,700
12-02-09	57,550	52,350	13.6237	13.4553	62,800	55,450
26-02-09	36,350	6,033	12.6091	12.5629	84,850	32,500
12-03-09	45,200	35,400	11.6908	11.4779	48,855	31,172
26-03-09	16,463	10,463	11.7367	11.6498	25,523	20,223
09-04-09	3,820.	3,520	12.6552	12.5336	13,350	11,750
23-04-09	1,600	1,100	12.9775	12.8896	5,200	2,400

## 6.4 Auction of Government of Pakistan Market Treasury Bills (Auction Wise)

(Million Rupees)

AUCTION SETTLEMENT  DATE	6 Months Treasury Bills		12 Months Treasury Bills			
	Cutt-off Yield ( % )	Weighted Average ( % )	Amount Offered	Amount Accepted	Cutt-off Yield ( % )	Weighted Average ( % )
<b>2007-08</b>						
10-04-08	9.8686	9.8686	33,108	17,758	10.1357	10.1251
24-04-08	9.8686	9.8686	16,003	459	10.1357	10.1357
08-05-08	9.9570	9.8931	19,344	16,344	10.2452	10.1715
22-05-08	-	-	6,667	1,167	10.3427	10.3246
05-06-08	11.2464	11.1894	10,500	7,500	11.4893	11.3931
19-06-08	11.4927	11.4723	3,154	3,154	11.7390	11.6881
<b>2008-09</b>						
03-07-08	-	-	8,423	2,223	11.7891	11.7841
17-07-08	-	-	5,833	3,833	11.8392	11.8294
31-07-08	-	-	5,300	Rejected	Rejected	Rejected
15-08-08	-	-	58	Rejected	Rejected	Rejected
28-08-08	-	-	-	-	-	-
11-09-08	Rejected	Rejected	-	-	-	-
25-09-08	12.6876	12.6876	50	Rejected	Rejected	Rejected
09-10-08	Rejected	Rejected	-	-	-	-
23-10-08	12.6649	12.6649	500	500	12.7873	12.7873
06-11-08	Rejected	Rejected	1,500	Rejected	Rejected	Rejected
20-11-08	14.0108	14.0108	3,000	Rejected	Rejected	12.7873
04-12-08	14.0100	14.0108	1,000	Rejected	Rejected	Rejected
18-12-08	14.0108	14.0108	-	Rejected	-	-
02-01-09	13.9959	13.9959	3,000	3,000	14.2595	14.2529
15-01-09	14.0108	14.0093	37,357	29,107	14.2857	14.2609
29-01-09	14.0108	13.9958	105,435	22,600	14.2072	14.1589
12-02-09	13.8731	13.7357	256,900	59,800	13.9074	13.8408
26-02-09	12.9828	12.9600	241,023	100,000	13.0044	12.9881
12-03-09	11.7845	11.6684	174,404	53,685	11.8518	11.7781
26-03-09	11.8970	11.7665	87,510	58,260	11.9522	11.8475
09-04-09	12.9828	12.7641	63,030	54,930	13.4928	12.9687
23-04-09	13.0737	12.9524	125,570	69,445	13.2738	13.1351

Source: Domestic Markets & Monetary Management Department, SBP

## 6.5 Auction of Pakistan Investment Bonds (PIBs)

(Million Rupees)

AUCTION SETTLEMENT DATE	Tenure	Coupon Rate (%)	Amount Offered	Amount Accepted	Price Accepted = Rs.100	Cut-off Yield Accepted (%)	Weighted Average Yield Accepted (%)
<b>2007-08</b>							
<b>30-06-08</b>	3-Years	9.10	216.50	216.50	94.10	12.2964	12.2964
	5-Years	9.30	100.00	Rejected	-	-	-
	10-Years	9.60	2,787.70	837.70	80.18	13.4201	13.4112
	15-Years	10.00	1,262.50	812.50	78.02	13.6104	13.4405
	20-Years	10.50	2,200.00	1,200.00	77.37	13.9399	13.8548
	30-Years	11.00	2,200.00	1,700.00	77.64	14.2496	14.1182
<b>2008-09</b>							
<b>30-08-08</b>	3-Years	11.25	375.00	187.50	94.14	13.6973	13.6973
	5-Years	11.50	450.00	Rejected	-	-	-
	7-Years	11.75	325.00	200.00	88.79	14.3398	14.3278
	10-Years	12.00	2,490.00	688.30	86.78	14.5493	14.4724
	15-Years	12.50	50.00	56.00	86.55	14.7500	14.7500
	20-Years	13.00	-	-	-	-	-
	30-Years	13.75	2,500.00	2,500.00	92.15	14.9384	14.6078
<b>19-02-09</b>	3-Years	11.25	11,175.00	3,977.50	94.40	13.9530	13.8806
	5-Years	11.50	8,650.00	3,023.20	90.68	14.3692	14.3350
	7-Years	11.75	3,925.00	2,735.00	87.51	14.7973	14.7030
	10-Years	12.00	21,760.00	7,821.00	85.28	14.9444	14.8642
	15-Years	12.50	2,480.00	1,180.00	82.85	15.4995	15.3557
	20-Years	13.00	3,500.00	1,500.00	82.67	15.8998	15.7002
	30-Years	13.75	4,500.00	2,000.00	83.73	16.4496	16.2248
<b>16-04-09</b>	3-Years	11.25	5,746.00	3,071.50	96.61	12.9385	12.7670
	5-Years	11.50	6,579.00	2,830.00	95.24	12.9495	12.8620
	7-Years	11.75	4,975.00	2,592.00	94.09	13.1395	13.0505
	10-Years	12.00	27,425.00	14,156.00	93.41	13.2409	13.0672
	15-Years	12.50	1,800.00	63.40	91.92	13.8007	13.8007
	20-Years	13.00	1,300.00	200.00	91.80	14.2492	14.2492
	30-Years	13.75	1,500.00	100.00	94.87	14.4995	14.4995

Source: Domestic Markets & Monetary Management Department, SBP

## 6.6 Monthly KIBOR

(Percent per annum)

Period	1 Week		2 Week		1Month		3 Month		6 Month		9 Month		12 Month			
	Bid	Offer	Bid	Offer	Bid	Offer	Bid	Offer	Bid	Offer	Bid	Offer	Bid	Offer		
2008	Apr.	Month Average	9.18	10.18	9.41	9.91	9.52	10.02	9.72	10.22	9.87	10.37	10.00	10.50	10.22	10.72
		End-Month	8.70	9.70	9.16	9.66	9.48	9.98	9.76	10.26	9.90	10.40	9.99	10.49	10.20	10.70
	May.	Month Average	10.38	11.38	10.57	11.07	10.71	11.21	10.93	11.43	11.08	11.58	11.21	11.71	11.35	11.85
		End-Month	10.95	11.95	11.26	11.76	11.91	12.41	12.32	12.82	12.57	13.07	12.80	13.30	13.00	13.50
	Jun.	Month Average	11.51	12.51	11.96	12.46	12.27	12.77	12.58	13.08	12.82	13.32	13.01	13.51	13.19	13.69
		End-Month	12.22	13.22	12.79	13.29	13.14	13.64	13.38	13.88	13.69	14.19	13.86	14.36	13.97	14.47
	Jul.	Month Average	10.77	11.77	11.41	11.91	12.32	12.82	13.34	13.84	13.61	14.11	13.81	14.31	13.97	14.47
		End-Month	10.77	11.77	11.36	11.86	12.12	12.62	12.70	13.20	12.98	13.48	13.27	13.77	13.51	14.01
	Aug.	Month Average	11.65	12.65	12.07	12.57	12.46	12.96	12.84	13.34	13.07	13.57	13.30	13.80	13.53	14.03
		End-Month	11.43	12.43	11.98	12.48	12.60	13.10	13.10	13.60	13.26	13.76	13.44	13.94	13.65	14.15
	Sep.	Month Average	12.94	13.94	13.20	13.70	13.31	13.81	13.42	13.92	13.51	14.01	13.63	14.13	13.80	14.30
		End-Month	14.07	15.07	14.04	14.54	14.02	14.52	13.99	14.49	14.02	14.52	14.08	14.58	14.16	14.66
Oct.	Month Average	13.00	14.00	13.38	13.88	13.74	14.24	14.09	14.59	14.27	14.77	14.37	14.87	14.48	14.98	
	End-Month	12.55	13.55	12.91	13.41	13.62	14.12	14.30	14.80	14.60	15.10	14.73	15.23	14.87	15.37	
Nov.	Month Average	10.80	11.48	11.76	12.27	13.78	14.28	15.00	15.35	15.26	15.60	15.34	15.84	15.44	15.94	
	End-Month	10.60	11.10	11.26	11.76	13.58	14.08	15.22	15.47	15.42	15.67	15.48	15.98	15.56	16.06	
Dec.	Month Average	9.77	10.27	11.29	11.79	13.78	14.28	15.23	15.48	15.42	15.67	15.50	16.00	15.57	16.07	
	End-Month	14.27	14.77	14.02	14.52	14.17	14.67	15.27	15.52	15.45	15.70	15.52	16.02	15.61	16.11	
2009	Jan.	Month Average	10.51	11.01	11.32	11.82	12.86	13.36	14.71	14.96	15.21	15.46	15.41	15.91	15.52	16.02
		End-Month	10.01	10.51	10.79	11.29	12.30	12.80	14.16	14.41	14.85	15.10	15.28	15.78	15.44	15.94
	Feb.	Month Average	10.74	11.24	11.31	11.81	11.98	12.48	13.50	13.75	13.95	14.20	14.68	15.18	14.98	15.48
		End-Month	10.34	10.84	10.47	10.97	10.87	11.37	12.14	12.39	12.76	13.01	13.46	13.96	13.93	14.43
	Mar.	Month Average	11.56	12.06	11.52	12.02	11.58	12.08	11.91	12.16	12.29	12.54	13.06	13.56	13.50	14.00
		End-Month	13.46	13.96	12.95	13.45	12.62	13.12	12.52	12.77	12.60	12.85	13.00	13.50	13.41	13.91
	Apr.	Month Average	12.80	13.30	12.81	13.31	12.82	13.32	12.90	13.15	13.02	13.27	13.25	13.75	13.50	14.00
		End-Month	12.96	13.46	12.87	13.37	12.87	13.37	12.99	13.24	13.10	13.35	13.24	13.74	13.45	13.95

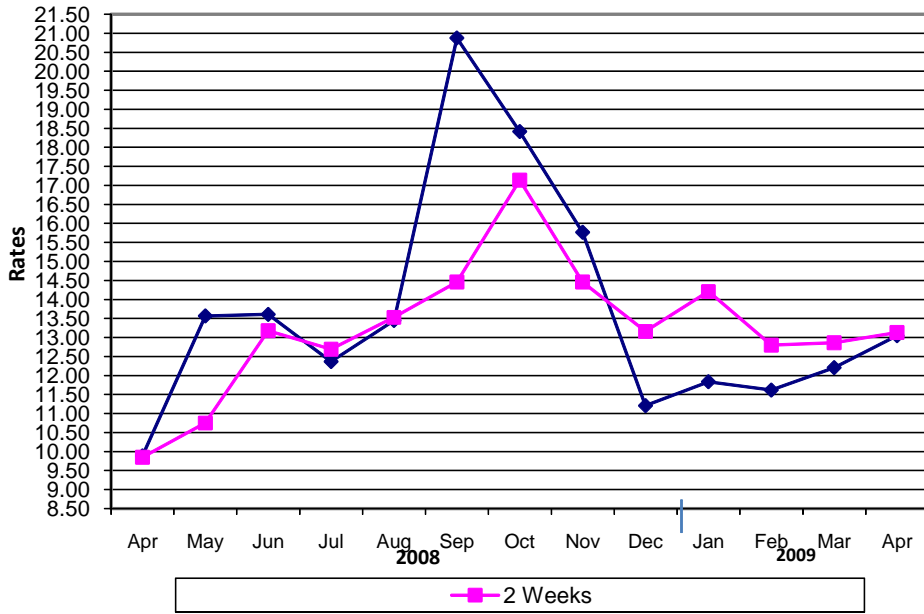
KIBOR :Karachi Interbank Offered Rate

Source: Domestic Markets & Monetary Management Department, SBP

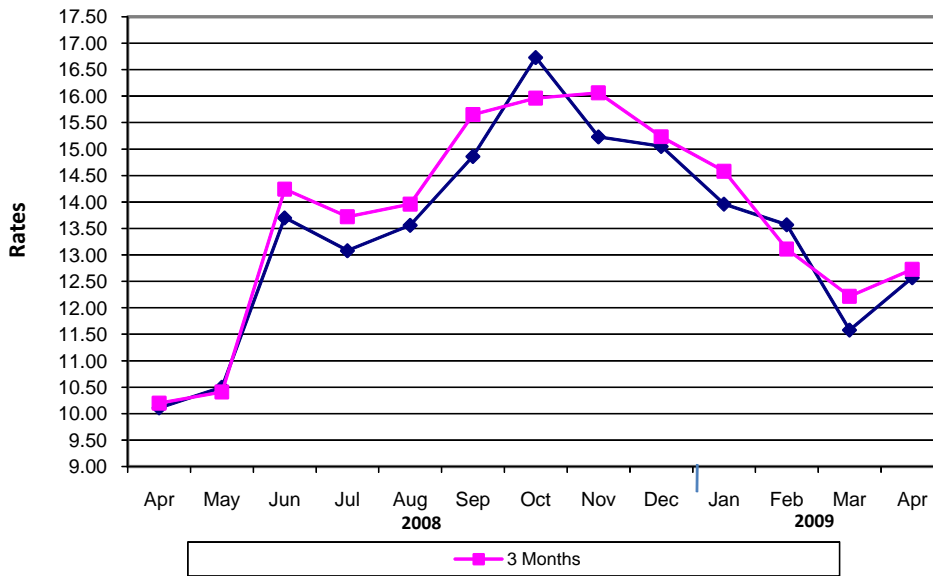


# Inter- Bank Average Call Rates

## Weekly



## Monthly



## 6.7 Indicative Inter-Bank Average Call Rates

(% Per Annum)

Period	Overnight	1 Week	2 Week	1 Month	3 Month	6 Month	1 Year
<b>2008</b> Apr.	9.99	9.89	9.85	10.11	10.20	10.12	-
May	11.93	13.57	10.75	10.50	10.41	10.62	-
Jun.	13.55	13.61	13.18	13.70	14.24	13.75	-
Jul.	11.61	12.37	12.69	13.08	13.72	-	-
Aug.	12.93	13.45	13.53	13.56	13.96	-	-
Sep.	16.08	20.88	14.46	14.86	15.65	15.97	-
Oct.	20.03	18.42	17.14	16.73	15.96	-	-
Nov.	13.61	15.77	14.46	15.23	16.06	-	-
Dec.	10.98	11.21	13.16	15.05	15.23	-	-
<b>2009</b> Jan.	12.05	11.84	14.21	13.96	14.58	14.65	-
Feb.	11.45	11.62	12.80	13.57	13.11	14.03	-
Mar.	12.84	12.21	12.86	11.58	12.22	12.29	-
Apr.	12.65	13.05	13.13	12.57	12.73	13.07	-

Source: Domestic Markets & Monetary Management Department, SBP

## 6.8 SBP Rates for Market to Market (M2M) of Major Currencies

MONTH	US Dollar			Euro			Japanese Yen			Pound Sterling		
	Ready	1Week	1 Month	Ready	1Week	1 Month	Ready	1Week	1 Month	Ready	1Week	1 Month
01-Apr-09	80.6013	80.8195	81.4857	106.5711	106.8512	107.7354	0.8135	0.8157	0.8227	116.0820	116.3959	117.3630
02-Apr-09	80.5669	80.7392	81.3960	107.2264	107.4508	108.3264	0.8078	0.8096	0.8165	117.8935	118.1451	119.1116
03-Apr-09	80.5682	80.7437	81.3876	108.3522	108.5834	109.4430	0.8066	0.8084	0.8151	119.0678	119.3259	120.2816
04-Apr-09	80.5732	80.7593	81.4042	108.7094	108.9556	109.8196	0.8035	0.8054	0.8121	119.5666	119.8418	120.8026
06-Apr-09	80.5446	80.7645	81.4041	108.8923	109.1857	110.0461	0.7954	0.7976	0.8042	119.9349	120.2613	121.2177
07-Apr-09	80.5537	80.7769	81.4146	106.8344	107.1263	107.9665	0.8043	0.8066	0.8132	117.8944	118.2207	119.1592
08-Apr-09	80.6373	80.8510	81.4837	106.5178	106.7937	107.6213	0.8083	0.8105	0.8171	118.2385	118.5490	119.4837
09-Apr-09	80.6304	80.8372	81.4945	107.1014	107.3676	108.2236	0.8052	0.8073	0.8142	118.2042	118.5069	119.4703
10-Apr-09	80.5579	80.7571	81.3916	105.8813	106.1332	106.9497	0.8024	0.8045	0.8111	117.9368	118.2272	119.1558
11-Apr-09	80.5742	80.7707	81.3938	106.2009	106.4501	107.2569	0.8031	0.8051	0.8116	118.1218	118.4094	119.3250
13-Apr-09	80.6860	80.7756	81.3913	106.4369	106.5449	107.3422	0.8019	0.8029	0.8093	118.6527	118.7835	119.6885
14-Apr-09	80.6954	80.7973	81.3824	107.3450	107.4721	108.2288	0.8084	0.8094	0.8156	120.2119	120.3634	121.2324
15-Apr-09	80.6506	80.7877	81.3684	106.8217	106.9943	107.7429	0.8143	0.8158	0.8220	120.3146	120.5170	121.3801
16-Apr-09	80.4389	80.6158	81.2266	105.9461	106.1694	106.9523	0.8154	0.8173	0.8238	120.2079	120.4696	121.3789
17-Apr-09	80.4533	80.6297	81.2396	105.2088	105.4300	106.2027	0.8096	0.8114	0.8178	118.8335	119.0915	119.9860
18-Apr-09	80.3572	80.5309	81.1371	104.6974	104.9141	105.6813	0.8098	0.8116	0.8180	118.8202	119.0744	119.9636
20-Apr-09	80.5649	80.7367	81.3404	104.4806	104.6932	105.4504	0.8152	0.8170	0.8234	117.3750	117.6220	118.4935
21-Apr-09	80.6145	80.7423	81.3303	104.6941	104.8495	105.5885	0.8200	0.8214	0.8277	117.7214	117.9047	118.7541
22-Apr-09	80.6005	80.7014	81.2907	104.2728	104.3886	105.1292	0.8206	0.8216	0.8280	117.1528	117.2960	118.1512
23-Apr-09	80.5870	80.7314	81.2957	105.0733	105.2512	105.9627	0.8201	0.8216	0.8276	117.3427	117.5507	118.3702
24-Apr-09	80.4897	80.7239	81.2325	106.5724	106.8769	107.5331	0.8297	0.8321	0.8376	117.8208	118.1612	118.9058
25-Apr-09	80.5417	80.7233	81.2861	106.6090	106.8421	107.5716	0.8287	0.8307	0.8367	118.1587	118.4227	119.2430
27-Apr-09	80.4948	80.6908	81.2626	105.7702	106.0213	106.7574	0.8338	0.8359	0.8421	117.0476	117.3294	118.1567
28-Apr-09	80.4887	80.6792	81.2509	104.6756	104.9188	105.6487	0.8384	0.8404	0.8467	117.0024	117.2772	118.1060
29-Apr-09	80.5523	80.7471	81.3234	106.2646	106.5199	107.2728	0.8326	0.8347	0.8409	118.5971	118.8836	119.7343
30-Apr-09	80.5275	80.7202	81.2933	107.3069	107.5614	108.3166	0.8245	0.8266	0.8327	119.7444	120.0301	120.8805

## 6.8 SBP Rates for Market to Market (M2M) of Major Currencies

MONTH	Swiss Frank			Australian Dollar			Saudi Arabian Riyal			Kuwaiti Dinnar		
	Ready	1Week	1 Month	Ready	1Week	1 Month	Ready	1Week	1 Month	Ready	1Week	1 Month
01-Apr-09	70.4773	70.6822	71.2951	55.7278	55.8329	56.2163	21.4914	21.5491	21.7266	276.4115	277.0922	279.2039
02-Apr-09	70.2935	70.4540	71.0584	56.9890	57.0774	57.4534	21.4825	21.5280	21.7018	276.6247	277.2115	279.3561
03-Apr-09	71.0228	71.1853	71.7862	57.6909	57.7855	58.1509	21.4834	21.5293	21.6999	276.8677	277.4212	279.4138
04-Apr-09	71.3037	71.4760	72.0787	57.6139	57.7170	58.0839	21.4839	21.5335	21.7049	276.8364	277.4615	279.4994
06-Apr-09	71.2910	71.4929	72.0906	57.6901	57.8173	58.1851	21.4754	21.5329	21.7046	277.0428	277.7224	279.7102
07-Apr-09	70.3158	70.5176	71.1054	57.1408	57.2678	57.6193	21.4790	21.5378	21.7068	277.0083	277.6938	279.7512
08-Apr-09	70.2048	70.3977	70.9758	56.9662	57.0870	57.4395	21.5010	21.5569	21.7252	276.3924	277.0706	278.9870
09-Apr-09	70.2692	70.4562	71.0510	57.3443	57.4621	57.8365	21.4997	21.5541	21.7284	276.5585	277.1862	279.2532
10-Apr-09	69.5484	69.7273	70.3017	57.9171	58.0310	58.3930	21.4807	21.5326	21.7027	276.1010	276.7169	278.7193
11-Apr-09	69.7854	69.9625	70.5273	57.9812	58.0933	58.4471	21.4845	21.5357	21.7027	276.2895	276.8869	278.8128
13-Apr-09	69.9761	70.0623	70.6268	58.3480	58.3813	58.7282	21.5142	21.5382	21.6991	276.6631	276.9038	278.8424
14-Apr-09	70.7234	70.8187	71.3552	58.8068	58.8518	59.1722	21.5168	21.5431	21.6991	277.2093	277.5033	279.2280
15-Apr-09	70.6315	70.7565	71.2883	58.1854	58.2525	58.5710	21.5054	21.5425	21.6997	276.9121	277.3112	279.2088
16-Apr-09	70.0871	70.2458	70.7996	58.0327	58.1300	58.4757	21.4481	21.4947	21.6613	276.0911	276.6168	278.6170
17-Apr-09	69.2220	69.3783	69.9238	57.9948	58.0917	58.4353	21.4525	21.4995	21.6653	275.9038	276.4492	278.2703
18-Apr-09	68.8993	69.0527	69.5918	57.9737	58.0688	58.4082	21.4266	21.4729	21.6374	275.4081	275.9373	277.8715
20-Apr-09	68.8265	68.9773	69.5125	57.1850	57.2766	57.6098	21.4834	21.5284	21.6905	275.4125	275.9402	277.6930
21-Apr-09	69.1169	69.2311	69.7585	56.7849	56.8442	57.1538	21.4958	21.5293	21.6852	275.5536	275.9099	277.8245
22-Apr-09	68.9895	69.0829	69.6074	56.7306	56.7726	57.0841	21.4923	21.5184	21.6772	275.3226	275.5912	277.4143
23-Apr-09	69.1882	69.3161	69.8201	57.0757	57.1470	57.4505	21.4890	21.5268	21.6742	275.6431	276.0708	277.8485
24-Apr-09	70.5648	70.7741	71.2385	57.6347	57.7725	58.0403	21.4625	21.5240	21.6588	275.0854	275.8275	277.2913
25-Apr-09	70.6382	70.8031	71.3167	58.2518	58.3529	58.6628	21.4764	21.5248	21.6751	276.3864	276.9851	278.6156
27-Apr-09	70.1970	70.3735	70.8933	57.5417	57.6521	57.9640	21.4644	21.5161	21.6677	276.1403	276.7317	278.5973
28-Apr-09	69.5938	69.7638	70.2777	56.4508	56.5561	56.8693	21.4637	21.5139	21.6660	276.1200	276.7012	278.5665
29-Apr-09	70.6134	70.7908	71.3212	57.5748	57.6858	58.0000	21.4798	21.5316	21.6845	276.5364	277.1291	278.9154
30-Apr-09	71.0997	71.2770	71.8090	59.0146	59.1269	59.4488	21.4720	21.5235	21.6724	276.3945	276.9893	278.7837

Source: Domestic Markets & Monetary Management Department, SBP

## 6.9 Secondary Market Transactions in Government Securities

(Billion Rupees)

Security/Transactions	2008										2009			
	Apr.	May.	Jun.	Jul.	Aug.	Sep.	Oct.	Nov.	Dec.	Jan.	Feb.	Mar.	Apr.	
<b>PIBs</b>														
<b>Purchases</b>	<b>100.4</b>	<b>84.3</b>	<b>91.6</b>	<b>71.8</b>	<b>72.0</b>	<b>120.3</b>	<b>106.9</b>	<b>137.9</b>	<b>83.8</b>	<b>39.2</b>	<b>44.8</b>	<b>30.3</b>	<b>83.7</b>	
Non Banks	Repo	6.9	8.1	4.9	3.1	0.2	0.6	1.3	0.2	8.0	1.7	0.3	1.5	2.7
	Outright	5.9	4.2	4.6	1.1	3.2	0.5	1.1	0.2	2.2	0.3	7.4	2.0	6.9
Banks	Repo	75.0	57.7	65.3	58.0	46.9	40.9	47.6	54.7	40.7	26.0	22.3	14.5	20.5
	Outright	10.6	6.5	6.1	8.1	3.0	1.9	2.2	1.0	4.7	0.3	14.8	6.2	21.1
SBP	Repo	2.0	7.8	10.8	1.5	18.8	76.5	54.7	81.8	28.2	10.9	-	6.0	32.5
	Outright	-	-	-	-	-	-	-	-	-	-	-	-	-
<b>Sales</b>	<b>100.4</b>	<b>84.3</b>	<b>91.6</b>	<b>71.8</b>	<b>72.0</b>	<b>120.3</b>	<b>106.9</b>	<b>137.9</b>	<b>83.8</b>	<b>39.2</b>	<b>44.8</b>	<b>30.3</b>	<b>83.7</b>	
Non Banks	Repo	13.0	9.4	8.9	7.5	9.4	11.1	11.4	7.2	7.3	3.4	4.0	2.1	2.5
	Outright	0.7	0.6	0.2	0.7	0.3	0.3	-	0.5	2.0	0.1	2.7	1.4	1.0
Banks	Repo	70.9	64.3	72.1	55.1	56.4	107.0	92.2	129.5	69.6	35.3	18.6	19.9	53.2
	Outright	15.8	10.1	10.5	8.5	5.8	1.9	3.3	0.7	4.9	0.6	19.5	6.8	27.0
SBP	Repo	-	-	-	-	-	-	-	-	-	-	-	-	-
	Outright	-	-	-	-	-	-	-	-	-	-	-	-	-
<b>Net Position</b>	<b>-</b>	<b>-</b>	<b>-</b>	<b>-</b>	<b>-</b>	<b>-</b>	<b>-</b>	<b>-</b>	<b>-</b>	<b>-</b>	<b>-</b>	<b>-</b>	<b>-</b>	
<b>Treasury Bills</b>														
<b>Purchases</b>	<b>980.0</b>	<b>1,007.4</b>	<b>1,236.5</b>	<b>1,226.5</b>	<b>962.6</b>	<b>1,099.3</b>	<b>1,127.6</b>	<b>1,259.8</b>	<b>977.3</b>	<b>1,181.8</b>	<b>1,205.1</b>	<b>1,293.0</b>	<b>1,446.9</b>	
Non Banks	Repo	38.1	40.4	39.6	4.8	3.0	3.1	2.5	8.7	2.6	14.3	6.4	17.5	23.1
	Outright	13.1	12.6	9.9	4.1	8.4	6.3	1.8	20.3	21.1	29.6	11.3	28.4	40.5
Banks	Repo	800.4	814.2	1,046.8	1,128.9	763.2	703.1	912.0	1,106.1	808.3	964.6	1,017.1	996.7	969.0
	Outright	42.1	14.5	55.8	66.1	86.6	43.0	54.4	70.9	107.8	145.8	164.1	126.5	121.8
SBP		86.3	125.7	84.4	22.7	101.5	343.8	157.0	53.8	37.6	27.5	6.2	123.9	292.6
<b>Sales</b>	<b>980.0</b>	<b>1,007.4</b>	<b>1,236.5</b>	<b>1,226.5</b>	<b>962.6</b>	<b>1,099.3</b>	<b>1,127.6</b>	<b>1,259.8</b>	<b>977.3</b>	<b>1,181.8</b>	<b>1,205.1</b>	<b>1,293.0</b>	<b>1,446.9</b>	
Non Banks	Repo	21.4	21.9	33.0	66.2	47.4	42.0	49.6	31.2	51.8	72.0	78.7	72.4	95.4
	Outright	5.4	2.1	0.0	-	0.2	0.1	0.0	0.0	1.2	6.2	1.8	4.3	2.3
Banks	Repo	773.5	877.8	937.4	722.3	779.1	981.0	985.9	948.2	685.0	755.5	808.9	1,018.5	1,174.2
	Outright	49.8	25.0	65.7	70.2	94.8	49.3	56.1	91.1	127.6	169.1	173.6	126.5	160.0
SBP		129.9	80.6	200.4	367.9	41.2	27.0	36.0	189.2	111.6	178.9	142.1	71.3	15.0
<b>Net Position</b>	<b>-</b>	<b>-</b>	<b>-</b>	<b>-</b>	<b>-</b>	<b>-</b>	<b>-</b>	<b>-</b>	<b>-</b>	<b>-</b>	<b>-</b>	<b>-</b>	<b>-</b>	