

6.1 Government of Pakistan Treasury Bills

(Million Rupees)

PERIOD	3 months Government of Pakistan Treasury Bills					6 months Government of Pakistan Treasury Bills			
	Discount			Discount	Outstanding Balance	Discount			
	Issue	Allowed	Discharged	Paid		Issue	Allowed	Discharged	
2004 Jun.	-	-	20,926.6	73.4	30,356.2	-	-	297.6	
Dec.	15,113.8	136.2	17,332.4	117.6	61,089.6	-	-	-	
2005 Jun.	74,533.5	1,237.8	76,332.8	867.2	254,698.5	59,097.9	273.1	-	
Dec.	2,734.1	50.9	8,280.6	154.4	14,615.3	1,728.9	71.1	59,097.9	
2006 Jun.	1,800.8	34.2	12,109.3	225.7	2,095.3	623.8	26.2	1,728.9	
Dec.	793.6	15.8	27,846.2	553.8	20,995.0	5,124.8	225.2	623.8	
2007 Jun.	-	-	5,147.5	102.5	3,001.7	299.7	13.3	5,124.8	
Dec.	7,912.0	164.8	-	-	8,026.0	17,332.5	793.6	300.0	
2008 Jun.	65,661.5	1,668.2	489.3	10.8	90,645.9	3,441.3	192.4	17,332.5	
Dec.	146,373.8	4,662.8	49,133.6	1,420.6	412,083.6	6,169.5	431.0	3,441.3	
2008 May.	14,983.0	336.8	19,551.0	423.0	25,473.7	3,470.7	171.2	4,905.3	
Jun.	65,661.5	1,668.2	489.3	10.8	90,645.9	3,441.3	192.4	17,332.5	
Jul.	165,193.3	4,444.0	21,251.1	470.4	234,588.0	-	-	1,414.5	
Aug.	72,051.4	2,027.2	57,333.3	1,440.6	249,306.3	-	-	15,643.8	
Sep.	49,133.6	1,420.6	86,916.5	2,286.8	211,523.4	301.9	19.1	7,799.5	
Oct.	111,148.3	3,229.8	90,338.4	2,471.4	239,010.9	1,553.0	98.1	11,777.0	
Nov.	154,561.5	4,774.9	72,051.4	2,027.2	314,843.4	1,892.3	132.2	3,470.7	
Dec.	146,373.8	4,662.8	49,133.6	1,420.6	412,083.6	6,169.5	431.0	3,441.3	
2009 Jan.	153,983.5	4,871.7	164,080.9	4,802.0	401,986.2	26,332.9	1,837.1	-	
Feb.	56,651.6	1,742.2	181,630.0	5,751.5	277,007.7	82,444.1	5,528.5	-	
Mar.	44,726.9	1,185.5	130,408.7	4,130.4	191,325.9	48,560.3	2,834.7	301.9	
Apr.	5,955.8	173.8	89,947.4	2,855.3	107,334.4	13,301.3	848.7	1,553.0	
May.	2,538.3	75.7	56,651.6	1,742.2	53,221.2	8,758.8	573.2	1,892.3	

Note : Six months Government of Pakistan Treasury Bills restarted w. e. f. June 1998 and 3 & 12 months Government of Pakistan Treasury Bills restarted w.e.f July 1998.

6.1 Government of Pakistan Treasury Bills

(Million Rupees)

PERIOD	6 months Government of Pakistan Treasury Bills		12 months Government of Pakistan Treasury Bills (Auctioned and Rollover)				
	Discount Paid	Outstanding Balance	Issue	Discount Allowed	Discharged	Discount Paid	Outstanding Balance
2004 Jun.	2.4	78,909.1	-	-	25,403.2	596.8	236,420.9
2004 Dec.	-	118,457.3	-	-	196.1	3.9	91,601.7
2005 Jun.	-	132,708.3	48,360.1	1,229.2	-	-	65,798.8
2005 Dec.	2,335.8	59,159.9	82,036.8	7,174.7	-	-	329,870.2
2006 Jun.	71.1	7,934.1	28,686.2	2,513.8	48,360.1	4,039.9	422,647.0
2006 Dec.	26.2	43,288.7	47,687.7	4,282.3	82,150.5	7,184.7	344,177.0
2007 Jun.	225.2	45,252.8	49,979.6	4,550.4	28,686.2	2,513.8	607,844.1
2007 Dec.	13.3	31,126.8	26,706.0	2,504.0	47,687.7	4,282.3	686,517.2
2008 Jun.	793.6	43,546.7	9,559.4	1,094.0	49,979.6	4,550.4	402,783.9
2008 Dec.	192.4	9,916.8	-	-	26,706.0	2,503.9	136,100.5
2008 May.	223.7	57,437.9	15,896.9	1,614.1	25,812.1	2,340.9	443,204.2
2008 Jun.	793.6	43,546.7	9,559.4	1,094.0	49,979.6	4,550.4	402,783.9
2008 Jul.	65.5	42,132.2	5,495.6	647.4	115,818.9	10,598.8	292,460.6
2008 Aug.	756.2	26,488.5	-	-	28,429.7	2,670.3	264,030.9
2008 Sep.	382.0	18,990.9	-	-	42,788.8	4,010.7	221,242.2
2008 Oct.	579.2	9,247.7	443.5	0.6	20,067.2	1,880.5	221,507.6
2008 Nov.	171.2	7,188.5	1.2	0.2	38,813.0	3,636.1	162,806.6
2008 Dec.	192.4	9,916.8	-	-	26,706.0	2,503.9	136,100.5
2009 Jan.	-	36,239.6	48,904.3	6,933.5	20,641.3	1,947.0	164,363.5
2009 Feb.	-	118,863.7	141,104.1	18,723.3	47,039.1	4,660.8	258,428.5
2009 Mar.	19.1	166,942.2	99,893.9	11,769.5	20,477.2	2,057.9	337,845.2
2009 Apr.	98.1	178,690.4	111,192.5	14,484.5	16,546.4	1,670.8	432,491.4
2009 May.	132.2	185,556.9	90,083.3	11,893.9	15,896.9	1,614.1	506,677.9

Source: Financial Markets Strategy & Conduct Department, SBP

6.2 Sale / Purchase of Treasury Bills under Open Market Operation by SBP with Banks

SALE

(Billion Rupees)

PERIOD	2004-05		2005-06		2006-07		2007-08		2008-09	
	Bid Amount		Bid Amount		Bid Amount		Bid Amount		Bid Amount	
	Offered	Accepted	Offered	Accepted	Offered	Offered	Accepted	Accepted	Accepted	Accepted
July	74.3	71.5	56.5	46.8	159.3	133.5	187.8	141.8	508.0	367.9
August	66.9	57.9	86.0	65.2	131.9	105.7	272.9	228.3	71.1	41.2
September	13.2	4.0	83.9	69.7	107.0	87.0	81.1	71.3	15.7	9.5
October	61.8	52.6	14.0	9.0	92.9	81.3	-	-	44.8	36.0
November	59.9	42.4	32.0	26.5	71.5	61.9	163.8	124.7	413.5	223.7
December	103.2	95.2	159.2	95.9	124.7	117.2	86.8	69.0	184.3	124.6
January	15.4	6.5	82.5	67.1	69.6	60.2	74.7	52.3	280.5	178.9
February	60.8	56.6	80.5	64.7	23.9	11.7	95.4	70.9	238.6	142.1
March	83.7	60.8	44.5	41.1	50.2	42.1	113.2	77.7	89.1	71.3
April	90.9	49.6	-	-	119.0	88.8	160.2	129.9	37.8	24.3
May	73.1	49.2	6.6	4.0	27.0	11.4	126.4	80.6	18.5	15.8
June	95.5	64.9	235.4	153.8	161.8	135.3	290.6	200.4		
Average										
per month	66.6	50.9	73.4	53.7	94.9	78.0	137.7	103.9	172.9	112.3
per day	2.2	1.7	2.5	1.8	3.2	2.6	4.6	3.5	5.8	3.7

PURCHASE

PERIOD	2004-05		2005-06		2006-07		2007-08		2008-09	
	Amount		Amount		Amount		Amount		Amount	
	Offered	Injected	Offered	Injected	Offered	Injected	Offered	Injected	Offered	Injected
July	-	-	-	-	-	-	-	-	-	-
August	-	-	11.2	8.3	27.2	21.2	-	-	117.0	78.2
September	-	-	-	-	-	-	-	-	259.2	176.4
October	16.1	14.0	66.9	38.5	-	-	40.9	40.9	214.8	187.3
November	-	-	123.6	74.1	-	-	-	-	39.9	39.4
December	-	-	-	-	31.3	25.8	-	-	15.9	11.2
January	40.3	21.3	139.6	111.5	-	-	41.6	27.5	-	-
February	-	-	60.6	42.8	-	-	-	-	-	-
March	-	-	12.7	10.7	51.1	25.0	102.7	82.1	85.1	60.0
April	-	-	210.5	96.9	-	-	50.1	40.1	378.4	176.8
May	20.0	9.0	91.4	46.7	-	-	63.6	41.8	342.5	237.7
June	-	-	-	-	-	-	-	-	-	-
Average										
per month	6.4	3.7	59.7	35.8	9.1	6.0	24.9	19.4	132.1	87.9
per day	0.2	0.1	2.0	1.2	0.3	0.2	0.8	0.7	4.4	2.9

Source: Domestic Markets & Monetary Management Department, SBP

6.3 SBP 3-Day Repo Facility MTBs / FIBs / PIBs (Outstanding)

Cash Accommodation

(Million Rupees)

PERIOD	2003-04	2004-05	2005-06	2006-07	2007-08	2008-09
July	-	700	23,861	38,883	111,817	24,227
August	-	10,600	48,241	19,032	68,490	42,861
September	-	84,760	45,245	66,715	121,825	254,378
October	10,440	63,324	116,512	27,670	575,455	55,638
November	400	14,098	91,780	77,702	126,045	149,228
December	-	-	4,520	35,573	427,940	105,625
January	1,350	115,134	29,760	7,718	129,107	66,000
February	8,340	-	12,032	34,435	80,755	6,150
March	-	21,695	47,815	75,895	89,772	69,930
April	24,745	800	243,238	51,327	51,609	71,257
May	1,245	70,787	55,246	174,980	93,458	2,200
June	-	139,550	44,019	76,830	96,792	
Average						
per month	3,877	43,454	63,522	57,230	164,422	77,045
per day	129	1,448	2,117	1,908	5,481	2,568

SBP 3-Day Repo Rates

(Percent per annum)

PERIOD	2003-04	2004-05	2005-06	2006-07	2007-08	2008-09
July	7.50	7.50	9.00	9.50	9.50	13.00
August	7.50	7.50	9.00	9.50	10.00	13.00
September	7.50	7.50	9.00	9.50	10.00	13.00
October	7.50	7.50	9.00	9.50	10.00	13.00
November	7.50	7.50	9.00	9.50	10.00	15.00
December	7.50	7.50	9.00	9.50	10.00	15.00
January	7.50	7.50	9.00	9.50	10.00	15.00
February	7.50	7.50	9.00	9.50	10.50	15.00
March	7.50	7.50	9.00	9.50	10.50	15.00
April	7.50	9.00	9.00	9.50	10.50	14.00
May	7.50	9.00	9.00	9.50	12.00	14.00
June	7.50	9.00	9.00	9.50	12.00	

Note: Rates applicable against T-bills & FIBs, PIBs

Source: Domestic Markets & Monetary Management Department, SBP

6.4 Auction of Government of Pakistan Market Treasury Bills (Auction Wise)

(Million Rupees)

AUCTION SETTLEMENT DATE	3 Months Treasury Bills				6 Months Treasury Bills	
	Amount Offered	Amount Accepted	Cut-off Yield (%)	Weighted Average (%)	Amount Offered	Amount Accepted
2007-08						
08-05-08	11,500	11,500	9.7746	9.6679	3,604	3,604
22-05-08	4,104	2,504	9.9741	9.9506	-	-
05-06-08	54,954	54,954	11.2331	10.9769	4,300	3,300
19-06-08	15,901	12,376	11.4161	11.3163	330	330
2008-09						
03-07-08	79,328	76,828	11.5534	11.4512	-	-
17-07-08	50,504	50,504	11.7825	11.6528	-	-
31-07-08	92,270	41,070	12.1954	12.1688	-	-
15-08-08	40,350	37,000	12.2959	12.2205	-	-
28-08-08	35,702	35,702	12.5631	12.3874	-	-
11-09-08	45,796	14,759	12.5631	12.5631	650	Rejected
25-09-08	60,245	34,945	12.5631	12.5631	771	321
09-10-08	71,755	52,605	12.5518	12.5518	100	Rejected
23-10-08	66,500	61,600	12.5631	12.5625	600	500
06-11-08	53,571	53,071	13.5313	12.9066	1,700	Rejected
20-11-08	123,667	104,800	13.8549	13.6934	2,500	2,000
04-12-08	153,351	82,550	13.8549	13.8437	4,075	Rejected
18-12-08	87,300	68,450	13.8549	13.8397	6,500	-
02-01-09	77,908	65,908	13.9750	13.8472	1,860	1,360
15-01-09	138,025	45,850	13.8549	13.8545	14,600	10,100
29-01-09	76,385	45,484	13.7624	13.7338	17,200	16,700
12-02-09	57,550	52,350	13.6237	13.4553	62,800	55,450
26-02-09	36,350	6,033	12.6091	12.5629	84,850	32,500
12-03-09	45,200	35,400	11.6908	11.4779	48,855	31,172
26-03-09	16,463	10,463	11.7367	11.6498	25,523	20,223
09-04-09	3,820	3,520	12.6552	12.5336	13,350	11,750
23-04-09	1,600	1,100	12.9775	12.8896	5,200	2,400
07-05-09	5,835	2,600	12.9775	12.9678	5,907	5,307
21-05-09	2,800	Rejected	12.9775	12.9678	5,650	4,025

6.4 Auction of Government of Pakistan Market Treasury Bills (Auction Wise)

(Million Rupees)

AUCTION SETTLEMENT DATE	6 Months Treasury Bills		12 Months Treasury Bills			
	Cutt-off Yield (%)	Weighted Average (%)	Amount Offered	Amount Accepted	Cutt-off Yield (%)	Weighted Average (%)
2007-08						
08-05-08	9.9570	9.8931	19,344	16,344	10.2452	10.1715
22-05-08	-	-	6,667	1,167	10.3427	10.3246
05-06-08	11.2464	11.1894	10,500	7,500	11.4893	11.3931
19-06-08	11.4927	11.4723	3,154	3,154	11.7390	11.6881
2008-09						
03-07-08	-	-	8,423	2,223	11.7891	11.7841
17-07-08	-	-	5,833	3,833	11.8392	11.8294
31-07-08	-	-	5,300	Rejected	Rejected	Rejected
15-08-08	-	-	58	Rejected	Rejected	Rejected
28-08-08	-	-	-	-	-	-
11-09-08	Rejected	Rejected	-	-	-	-
25-09-08	12.6876	12.6876	50	Rejected	Rejected	Rejected
09-10-08	Rejected	Rejected	-	-	-	-
23-10-08	12.6649	12.6649	500	500	12.7873	12.7873
06-11-08	Rejected	Rejected	1,500	Rejected	Rejected	Rejected
20-11-08	14.0108	14.0108	3,000	Rejected	Rejected	12.7873
04-12-08	14.0100	14.0108	1,000	Rejected	Rejected	Rejected
18-12-08	14.0108	14.0108	-	Rejected	-	-
02-01-09	13.9959	13.9959	3,000	3,000	14.2595	14.2529
15-01-09	14.0108	14.0093	37,357	29,107	14.2857	14.2609
29-01-09	14.0108	13.9958	105,435	22,600	14.2072	14.1589
12-02-09	13.8731	13.7357	256,900	59,800	13.9074	13.8408
26-02-09	12.9828	12.9600	241,023	100,000	13.0044	12.9881
12-03-09	11.7845	11.6684	174,404	53,685	11.8518	11.7781
26-03-09	11.8970	11.7665	87,510	58,260	11.9522	11.8475
09-04-09	12.9828	12.7641	63,030	54,930	13.4928	12.9687
23-04-09	13.0737	12.9524	125,570	69,445	13.2738	13.1351
07-05-09	13.1876	13.1105	128,030	72,745	13.2995	13.2294
21-05-09	13.1876	13.1423	71,373	55,799	13.2995	13.2648

Source: Domestic Markets & Monetary Management Department, SBP

6.5 Auction of Pakistan Investment Bonds (PIBs)

(Million Rupees)

AUCTION SETTLEMENT DATE	Tenure	Coupon Rate (%)	Amount Offered	Amount Accepted	Price Accepted = Rs.100	Cut-off Yield Accepted (%)	Weighted Average Yield Accepted (%)
2008-09							
30-08-08	3-Years	11.25	375.00	187.50	94.14	13.6973	13.6973
	5-Years	11.50	450.00	Rejected	-	-	-
	7-Years	11.75	325.00	200.00	88.79	14.3398	14.3278
	10-Years	12.00	2,490.00	688.30	86.78	14.5493	14.4724
	15-Years	12.50	50.00	56.00	86.55	14.7500	14.7500
	20-Years	13.00	-	-	-	-	-
	30-Years	13.75	2,500.00	2,500.00	92.15	14.9384	14.6078
19-02-09	3-Years	11.25	11,175.00	3,977.50	94.40	13.9530	13.8806
	5-Years	11.50	8,650.00	3,023.20	90.68	14.3692	14.3350
	7-Years	11.75	3,925.00	2,735.00	87.51	14.7973	14.7030
	10-Years	12.00	21,760.00	7,821.00	85.28	14.9444	14.8642
	15-Years	12.50	2,480.00	1,180.00	82.85	15.4995	15.3557
	20-Years	13.00	3,500.00	1,500.00	82.67	15.8998	15.7002
	30-Years	13.75	4,500.00	2,000.00	83.73	16.4496	16.2248
16-04-09	3-Years	11.25	5,746.00	3,071.50	96.61	12.9385	12.7670
	5-Years	11.50	6,579.00	2,830.00	95.24	12.9495	12.8620
	7-Years	11.75	4,975.00	2,592.00	94.09	13.1395	13.0505
	10-Years	12.00	27,425.00	14,156.00	93.41	13.2409	13.0672
	15-Years	12.50	1,800.00	63.40	91.92	13.8007	13.8007
	20-Years	13.00	1,300.00	200.00	91.80	14.2492	14.2492
	30-Years	13.75	1,500.00	100.00	94.87	14.4995	14.4995
28-05-09	3-Years	11.25	3,825.00	2,866.50	97.56	12.5018	12.3066
	5-Years	11.50	5,795.00	2,988.00	97.00	12.4151	12.3721
	7-Years	11.75	3,000.00	1,800.00	96.43	12.5807	12.5159
	10-Years	12.00	32,180.00	12,365.50	96.57	12.6303	12.5714
	15-Years	12.50	300.00	103.00	94.35	13.3900	13.3900
	20-Years	13.00	1,500.00	200.00	94.59	13.8004	13.8004
	30-Years	13.75	2,000.00	2,000.00	96.16	14.3003	14.2251

Source: Domestic Markets & Monetary Management Department, SBP

6.6 Monthly KIBOR

(Percent per annum)

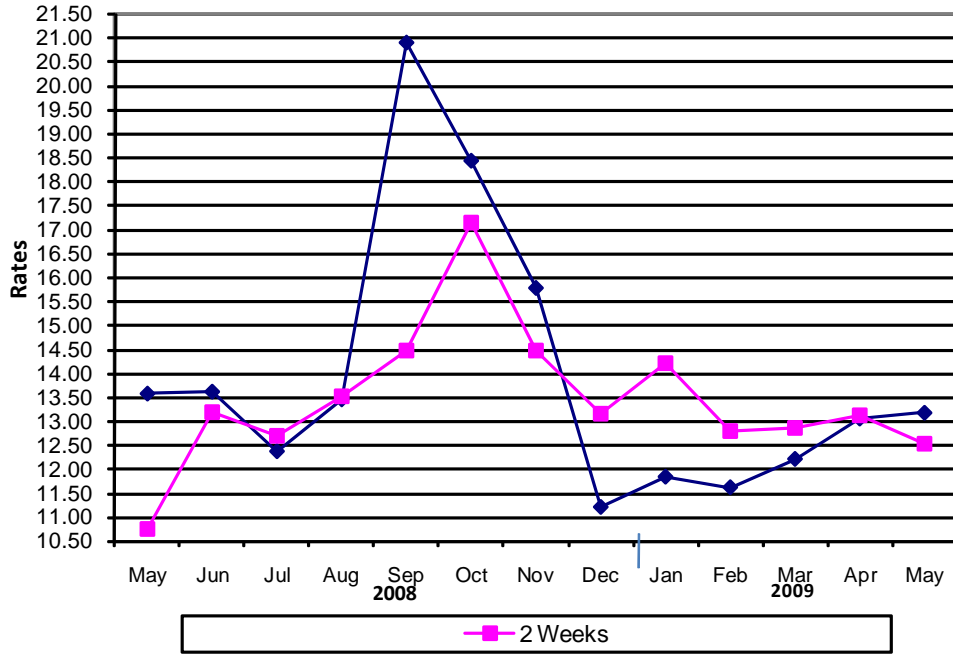
Period	1 Week		2 Week		1Month		3 Month		6 Month		9 Month		12 Month		
	Bid	Offer	Bid	Offer	Bid	Offer	Bid	Offer	Bid	Offer	Bid	Offer	Bid	Offer	
2008 May.	Month Average	10.38	11.38	10.57	11.07	10.71	11.21	10.93	11.43	11.08	11.58	11.21	11.71	11.35	11.85
	End-Month	10.95	11.95	11.26	11.76	11.91	12.41	12.32	12.82	12.57	13.07	12.80	13.30	13.00	13.50
Jun.	Month Average	11.51	12.51	11.96	12.46	12.27	12.77	12.58	13.08	12.82	13.32	13.01	13.51	13.19	13.69
	End-Month	12.22	13.22	12.79	13.29	13.14	13.64	13.38	13.88	13.69	14.19	13.86	14.36	13.97	14.47
Jul.	Month Average	10.77	11.77	11.41	11.91	12.32	12.82	13.34	13.84	13.61	14.11	13.81	14.31	13.97	14.47
	End-Month	10.77	11.77	11.36	11.86	12.12	12.62	12.70	13.20	12.98	13.48	13.27	13.77	13.51	14.01
Aug.	Month Average	11.65	12.65	12.07	12.57	12.46	12.96	12.84	13.34	13.07	13.57	13.30	13.80	13.53	14.03
	End-Month	11.43	12.43	11.98	12.48	12.60	13.10	13.10	13.60	13.26	13.76	13.44	13.94	13.65	14.15
Sep.	Month Average	12.94	13.94	13.20	13.70	13.31	13.81	13.42	13.92	13.51	14.01	13.63	14.13	13.80	14.30
	End-Month	14.07	15.07	14.04	14.54	14.02	14.52	13.99	14.49	14.02	14.52	14.08	14.58	14.16	14.66
Oct.	Month Average	13.00	14.00	13.38	13.88	13.74	14.24	14.09	14.59	14.27	14.77	14.37	14.87	14.48	14.98
	End-Month	12.55	13.55	12.91	13.41	13.62	14.12	14.30	14.80	14.60	15.10	14.73	15.23	14.87	15.37
Nov.	Month Average	10.80	11.48	11.76	12.27	13.78	14.28	15.00	15.35	15.26	15.60	15.34	15.84	15.44	15.94
	End-Month	10.60	11.10	11.26	11.76	13.58	14.08	15.22	15.47	15.42	15.67	15.48	15.98	15.56	16.06
Dec.	Month Average	9.77	10.27	11.29	11.79	13.78	14.28	15.23	15.48	15.42	15.67	15.50	16.00	15.57	16.07
	End-Month	14.27	14.77	14.02	14.52	14.17	14.67	15.27	15.52	15.45	15.70	15.52	16.02	15.61	16.11
2009 Jan.	Month Average	10.51	11.01	11.32	11.82	12.86	13.36	14.71	14.96	15.21	15.46	15.41	15.91	15.52	16.02
	End-Month	10.01	10.51	10.79	11.29	12.30	12.80	14.16	14.41	14.85	15.10	15.28	15.78	15.44	15.94
Feb.	Month Average	10.74	11.24	11.31	11.81	11.98	12.48	13.50	13.75	13.95	14.20	14.68	15.18	14.98	15.48
	End-Month	10.34	10.84	10.47	10.97	10.87	11.37	12.14	12.39	12.76	13.01	13.46	13.96	13.93	14.43
Mar.	Month Average	11.56	12.06	11.52	12.02	11.58	12.08	11.91	12.16	12.29	12.54	13.06	13.56	13.50	14.00
	End-Month	13.46	13.96	12.95	13.45	12.62	13.12	12.52	12.77	12.60	12.85	13.00	13.50	13.41	13.91
Apr.	Month Average	12.80	13.30	12.81	13.31	12.82	13.32	12.90	13.15	13.02	13.27	13.25	13.75	13.50	14.00
	End-Month	12.96	13.46	12.87	13.37	12.87	13.37	12.99	13.24	13.10	13.35	13.24	13.74	13.45	13.95
May.	Month Average	12.79	13.29	12.88	13.38	12.97	13.47	13.23	13.48	13.29	13.54	13.36	13.86	13.50	14.00
	End-Month	12.83	13.33	12.89	13.39	13.02	13.52	13.47	13.72	13.50	13.75	13.53	14.03	13.59	14.09

KIBOR :Karachi Interbank Offered Rate

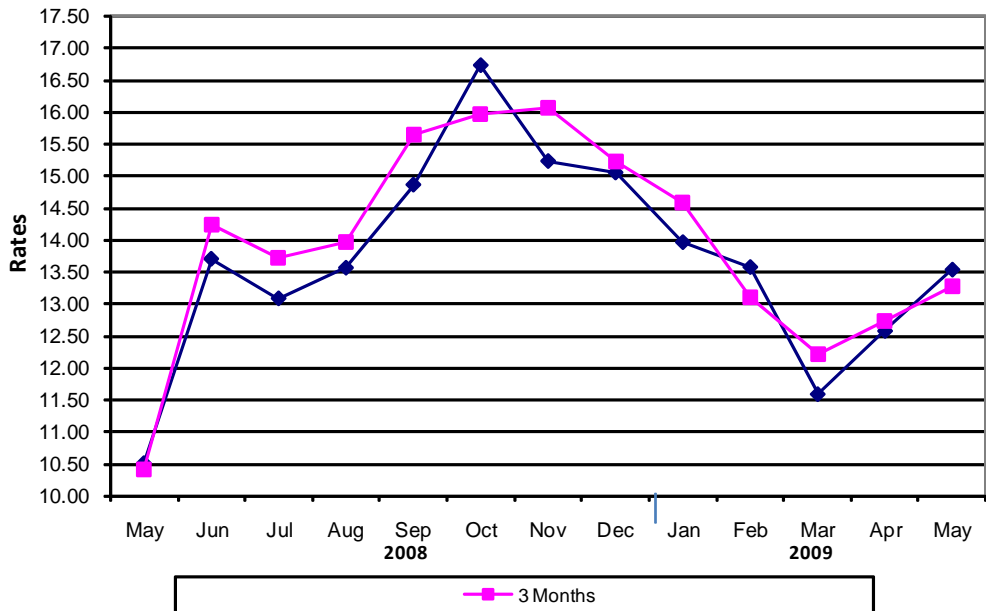
Source: Domestic Markets & Monetary Management Department, SBP

Inter- Bank Average Call Rates

Weekly



Monthly



6.7 Indicative Inter-Bank Average Call Rates

(% Per Annum)

Period	Overnight	1 Week	2 Week	1 Month	3 Month	6 Month	1 Year
2008 May.	11.93	13.57	10.75	10.50	10.41	10.62	-
Jun.	13.55	13.61	13.18	13.70	14.24	13.75	-
Jul.	11.61	12.37	12.69	13.08	13.72	-	-
Aug.	12.93	13.45	13.53	13.56	13.96	-	-
Sep.	16.08	20.88	14.46	14.86	15.65	15.97	-
Oct.	20.03	18.42	17.14	16.73	15.96	-	-
Nov.	13.61	15.77	14.46	15.23	16.06	-	-
Dec.	10.98	11.21	13.16	15.05	15.23	-	-
2009 Jan.	12.05	11.84	14.21	13.96	14.58	14.65	-
Feb.	11.45	11.62	12.80	13.57	13.11	14.03	-
Mar.	12.84	12.21	12.86	11.58	12.22	12.29	-
Apr.	12.65	13.05	13.13	12.57	12.73	13.07	-
May.	12.35	13.17	12.52	13.53	13.28	13.36	-

Source: Domestic Markets & Monetary Management Department, SBP

6.8 SBP Rates for Market to Market (M2M) of Major Currencies

MONTH	US Dollar			Euro			Japanese Yen			Pound Sterling		
	Ready	1Week	1 Month	Ready	1Week	1 Month	Ready	1Week	1 Month	Ready	1Week	1 Month
02-May-09	80.5823	80.7724	81.3510	106.8844	107.1340	107.8904	0.8113	0.8133	0.8194	120.1805	120.4619	121.3240
04-May-09	80.5234	80.7004	81.2835	106.8385	107.0711	107.8332	0.8095	0.8113	0.8175	119.7826	120.0444	120.9095
05-May-09	80.4528	80.6383	81.2227	107.6016	107.8485	108.6216	0.8114	0.8133	0.8195	121.4475	121.7255	122.6061
06-May-09	80.5149	80.7145	81.3442	107.1896	107.4553	108.2853	0.8184	0.8205	0.8271	121.3884	121.6877	122.6357
07-May-09	80.4651	80.6651	81.2773	106.9623	107.2260	108.0287	0.8128	0.8149	0.8213	121.7116	122.0118	122.9346
08-May-09	80.4177	80.6024	81.2065	107.9166	108.1609	108.9588	0.8091	0.8110	0.8173	120.8558	121.1308	122.0346
09-May-09	80.4866	80.6753	81.2726	109.7878	110.0415	110.8393	0.8174	0.8194	0.8257	122.6455	122.9304	123.8355
11-May-09	80.5521	80.7598	81.3648	109.5388	109.8168	110.6197	0.8225	0.8246	0.8311	121.7787	122.0900	122.9951
12-May-09	80.5051	80.7000	81.2960	109.8533	110.1122	110.9040	0.8233	0.8254	0.8317	122.5650	122.8582	123.7558
13-May-09	80.6719	80.8618	81.5150	110.3470	110.6004	111.4748	0.8380	0.8400	0.8470	123.4763	123.7630	124.7534
14-May-09	80.8196	81.0065	81.6270	109.9551	110.2034	111.0323	0.8472	0.8492	0.8559	122.3972	122.6770	123.6061
15-May-09	80.7998	80.9799	81.5912	109.5807	109.8206	110.6357	0.8512	0.8531	0.8598	122.6056	122.8750	123.7939
16-May-09	80.9489	81.1452	81.7440	109.1839	109.4436	110.2354	0.8515	0.8536	0.8602	122.7185	123.0123	123.9103
18-May-09	81.1414	81.3525	81.9400	109.1474	109.4257	110.1958	0.8494	0.8517	0.8581	123.4891	123.8060	124.6881
19-May-09	81.0288	81.2290	81.8254	110.4139	110.6802	111.4736	0.8393	0.8415	0.8478	125.4853	125.7904	126.6992
20-May-09	80.9315	81.1238	81.7558	110.3784	110.6291	111.4624	0.8438	0.8459	0.8527	125.5247	125.8173	126.7819
21-May-09	80.8598	81.0410	81.6683	111.3359	111.5723	112.4058	0.8539	0.8559	0.8627	125.8341	126.1111	127.0698
22-May-09	80.5115	80.6517	81.2469	112.2934	112.4783	113.2833	0.8548	0.8563	0.8629	127.2726	127.4903	128.4172
23-May-09	80.3905	80.5424	81.1423	112.5467	112.7497	113.5644	0.8477	0.8494	0.8560	127.8812	128.1190	129.0596
25-May-09	80.4331	80.6004	81.1723	112.4174	112.6409	113.4131	0.8472	0.8490	0.8553	127.5026	127.7644	128.6571
26-May-09	80.5676	80.7017	81.2636	112.0615	112.2368	112.9911	0.8497	0.8512	0.8573	127.4660	127.6743	128.5499
27-May-09	80.5615	80.7262	81.3344	112.5202	112.7414	113.5685	0.8448	0.8466	0.8532	128.9306	129.1912	130.1526
28-May-09	80.8870	81.0789	81.6915	112.0406	112.2992	113.1280	0.8356	0.8376	0.8442	128.7518	129.0543	130.0185
29-May-09	81.0070	81.1799	81.7841	113.4705	113.7054	114.5304	0.8406	0.8425	0.8490	130.0769	130.3507	131.3086
30-May-09	81.1712	81.3467	81.9502	114.8166	115.0576	115.8911	0.8524	0.8543	0.8609	131.3837	131.6645	132.6315

6.8 SBP Rates for Market to Market (M2M) of Major Currencies

MONTH	Swiss Frank			Australian Dollar			Saudi Arabian Riyal			Kuwaiti Dinnar		
	Ready	1Week	1 Month	Ready	1Week	1 Month	Ready	1Week	1 Month	Ready	1Week	1 Month
02-May-09	70.9133	71.0865	71.6200	58.8775	58.9864	59.3134	21.4886	21.5394	21.6898	276.5164	277.1447	278.9145
04-May-09	70.7618	70.9245	71.4646	58.9794	59.0790	59.3972	21.4726	21.5203	21.6766	276.6653	277.1971	279.0370
05-May-09	71.0808	71.2509	71.7920	60.0057	60.1132	60.4378	21.4518	21.5007	21.6556	276.7792	277.3362	279.2503
06-May-09	71.0823	71.2645	71.8438	59.6898	59.8071	60.1671	21.4701	21.5227	21.6929	276.6980	277.3124	279.3796
07-May-09	70.6454	70.8276	71.3920	60.7512	60.8699	61.2280	21.4565	21.5091	21.6748	276.5743	277.1902	279.1980
08-May-09	71.2891	71.4592	72.0209	60.8561	60.9641	61.3143	21.4439	21.4934	21.6565	276.4398	276.9984	278.9115
09-May-09	72.7628	72.9390	73.5050	61.9546	62.0684	62.4194	21.4628	21.5131	21.6750	276.6862	277.3107	279.1435
11-May-09	72.6907	72.8838	73.4547	61.4975	61.6236	61.9695	21.4797	21.5351	21.6956	278.0585	278.6983	280.6217
12-May-09	72.8092	72.9904	73.5537	61.6025	61.7194	62.0634	21.4666	21.5180	21.6760	277.7477	278.3384	280.2924
13-May-09	73.2482	73.4253	74.0399	61.9399	62.0542	62.4476	21.5119	21.5620	21.7388	278.7989	279.3828	281.5424
14-May-09	72.9814	73.1550	73.7354	60.8531	60.9595	61.3260	21.5507	21.6003	21.7652	278.9143	279.4820	281.5063
15-May-09	72.8977	73.0643	73.6343	61.1089	61.2151	61.5711	21.5455	21.5932	21.7556	278.9087	279.4626	281.4947
16-May-09	72.1245	72.3036	72.8559	60.6105	60.7275	61.0713	21.5849	21.6370	21.7961	279.6162	280.2170	282.1677
18-May-09	72.1161	72.3078	72.8498	61.1603	61.2886	61.6180	21.6374	21.6934	21.8524	279.6388	280.3416	282.1919
19-May-09	72.9595	73.1442	73.6996	62.7001	62.8229	63.1695	21.6065	21.6593	21.8175	279.4292	280.0371	281.9960
20-May-09	72.9836	73.1616	73.7498	62.4912	62.6077	62.9846	21.5812	21.6319	21.8030	279.6382	280.2301	282.3155
21-May-09	73.5390	73.7085	74.2963	62.2257	62.3311	62.6986	21.5621	21.6098	21.7797	280.1457	280.7003	282.7753
22-May-09	73.9044	74.0372	74.6000	62.8352	62.9111	63.2619	21.4683	21.5057	21.6641	278.9678	279.4050	281.3696
23-May-09	74.0585	74.2022	74.7745	62.9257	63.0112	63.3679	21.4360	21.4761	21.6364	278.5583	279.0605	281.0319
25-May-09	74.0705	74.2286	74.7762	62.6212	62.7187	63.0412	21.4474	21.4920	21.6451	279.4612	280.0279	281.8873
26-May-09	73.9119	74.0381	74.5726	62.5044	62.5773	62.8988	21.4833	21.5184	21.6703	279.6469	280.0295	281.8814
27-May-09	74.2913	74.4477	75.0276	63.2891	63.3861	63.7503	21.4822	21.5256	21.6898	279.3299	279.8514	281.7802
28-May-09	74.1096	74.2902	74.8722	63.0797	63.1921	63.5680	21.5690	21.6202	21.7850	280.0504	280.6510	282.5767
29-May-09	74.8920	75.0564	75.6357	64.2588	64.3634	64.7341	21.6013	21.6470	21.8103	280.6846	281.2397	283.1565
30-May-09	76.0457	76.2152	76.8000	65.0344	65.1420	65.5155	21.6445	21.6909	21.8540	281.2049	281.7681	283.6726

Source: Domestic Markets & Monetary Management Department, SBP

6.9 Secondary Market Transactions in Government Securities

(Billion Rupees)

Security/Transactions	2008								2009					
	May.	Jun.	Jul.	Aug.	Sep.	Oct.	Nov.	Dec.	Jan.	Feb.	Mar.	Apr.	May.	
PIBs														
Purchases	84.3	91.6	71.8	72.0	120.3	106.9	137.9	83.8	39.2	44.8	30.3	83.7	80.2	
Non Banks	Repo	8.1	4.9	3.1	0.2	0.6	1.3	0.2	8.0	1.7	0.3	1.5	2.7	5.4
	Outright	4.2	4.6	1.1	3.2	0.5	1.1	0.2	2.2	0.3	7.4	2.0	6.9	5.9
Banks	Repo	57.7	65.3	58.0	46.9	40.9	47.6	54.7	40.7	26.0	22.3	14.5	20.5	8.2
	Outright	6.5	6.1	8.1	3.0	1.9	2.2	1.0	4.7	0.3	14.8	6.2	21.1	12.4
SBP	Repo	7.8	10.8	1.5	18.8	76.5	54.7	81.8	28.2	10.9	-	6.0	32.5	48.3
	Outright	-	-	-	-	-	-	-	-	-	-	-	-	-
Sales	84.3	91.6	71.8	72.0	120.3	106.9	137.9	83.8	39.2	44.8	30.3	83.7	80.2	
Non Banks	Repo	9.4	8.9	7.5	9.4	11.1	11.4	7.2	7.3	3.4	4.0	2.1	2.5	0.5
	Outright	0.6	0.2	0.7	0.3	0.3	-	0.5	2.0	0.1	2.7	1.4	1.0	1.3
Banks	Repo	64.3	72.1	55.1	56.4	107.0	92.2	129.5	69.6	35.3	18.6	19.9	53.2	61.4
	Outright	10.1	10.5	8.5	5.8	1.9	3.3	0.7	4.9	0.6	19.5	6.8	27.0	16.9
SBP	Repo	-	-	-	-	-	-	-	-	-	-	-	-	-
	Outright	-	-	-	-	-	-	-	-	-	-	-	-	-
Net Position	-	-	-	-	-	-	-	-	-	-	-	-	-	
Treasury Bills														
Purchases	1,007.4	1,236.5	1,226.5	962.6	1,099.3	1,127.6	1,259.8	977.3	1,181.8	1,205.1	1,293.0	1,446.9	1,289.5	
Non Banks	Repo	40.4	39.6	4.8	3.0	3.1	2.5	8.7	2.6	14.3	6.4	17.5	23.1	28.4
	Outright	12.6	9.9	4.1	8.4	6.3	1.8	20.3	21.1	29.6	11.3	28.4	40.5	26.4
Banks	Repo	814.2	1,046.8	1,128.9	763.2	703.1	912.0	1,106.1	808.3	964.6	1,017.1	996.7	969.0	933.1
	Outright	14.5	55.8	66.1	86.6	43.0	54.4	70.9	107.8	145.8	164.1	126.5	121.8	107.9
SBP		125.7	84.4	22.7	101.5	343.8	157.0	53.8	37.6	27.5	6.2	123.9	292.6	193.6
Sales	1,007.4	1,236.5	1,226.5	962.6	1,099.3	1,127.6	1,259.8	977.3	1,181.8	1,205.1	1,293.0	1,446.9	1,289.5	
Non Banks	Repo	21.9	33.0	66.2	47.4	42.0	49.6	31.2	51.8	72.0	78.7	72.4	95.4	44.7
	Outright	2.1	0.0	-	0.2	0.1	0.0	0.0	1.2	6.2	1.8	4.3	2.3	4.3
Banks	Repo	877.8	937.4	722.3	779.1	981.0	985.9	948.2	685.0	755.5	808.9	1,018.5	1,174.2	1,094.6
	Outright	25.0	65.7	70.2	94.8	49.3	56.1	91.1	127.6	169.1	173.6	126.5	160.0	130.1
SBP		80.6	200.4	367.9	41.2	27.0	36.0	189.2	111.6	178.9	142.1	71.3	15.0	15.8
Net Position	-	-	-	-	-	-	-	-	-	-	-	-	-	