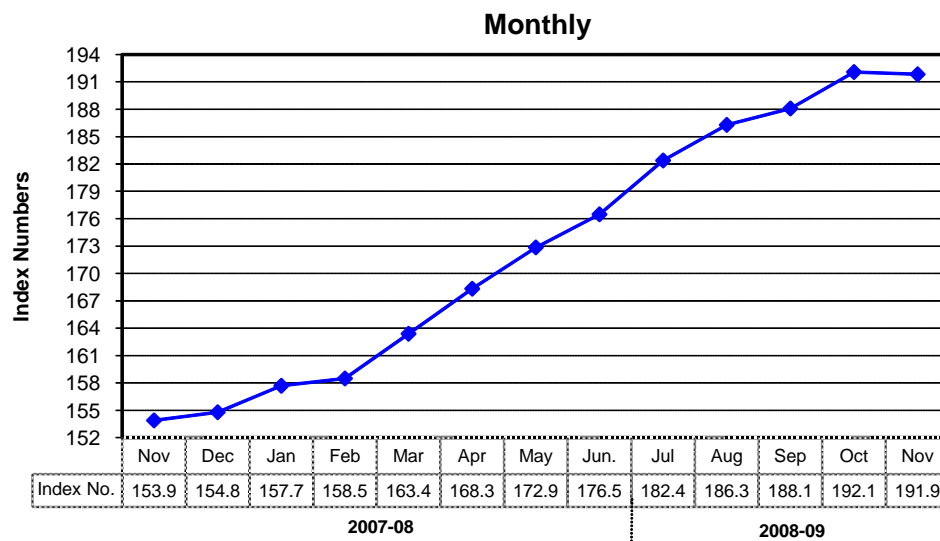
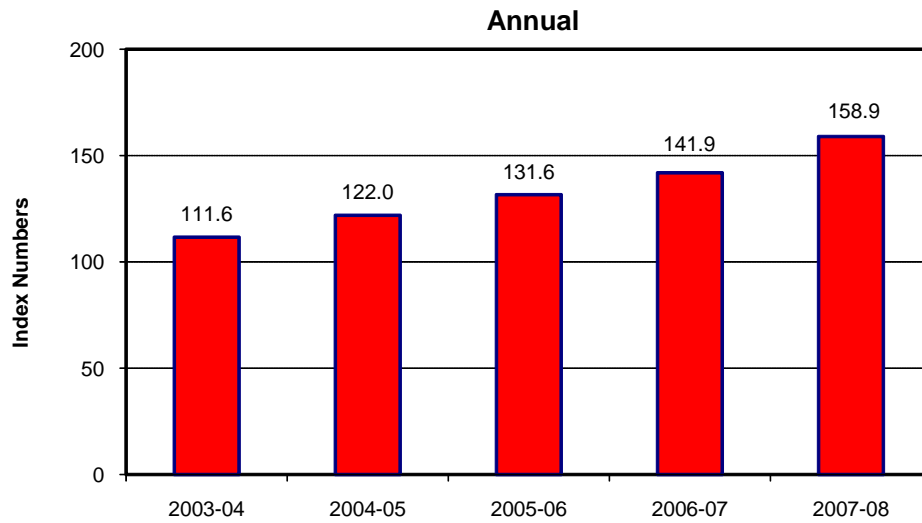


8.1 Combined Consumer Price Index Numbers by Commodity Groups - All Urban (2000-01=100)

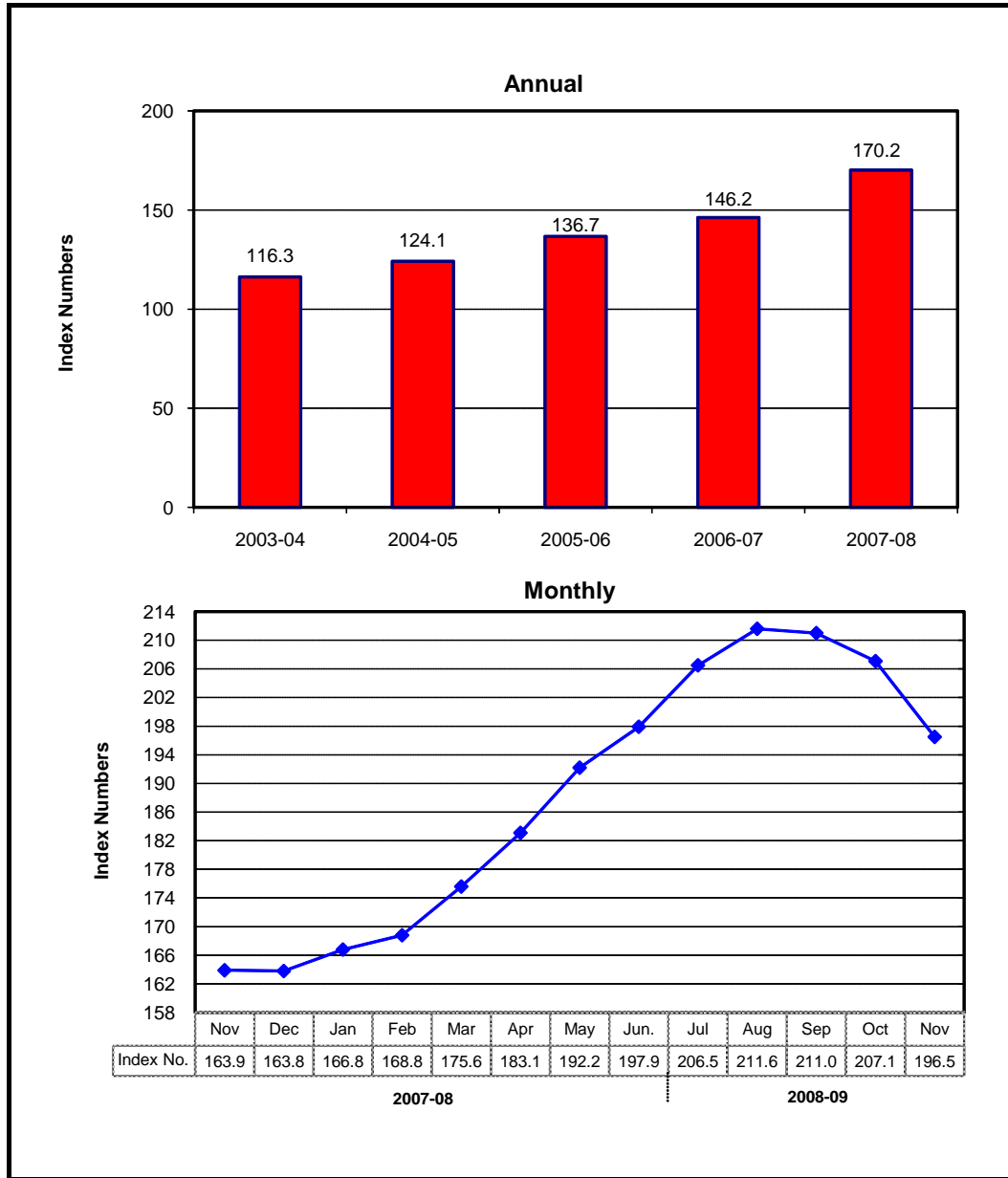
Year / Month		General	Food Beverages and Tobacco	Apparel Textile and Footwear	House Rent	Fuel and Lighting	Household Furniture and Equipment	Transportation and Communi- cation	Recreation Entertain- ment & Education	Education	Cleaning Laundry and Personal Appearance	Medicare
2003-04		111.63	111.74	109.69	102.20	121.30	110.68	115.43	106.08	114.19	111.29	106.99
2004-05		121.98	125.69	112.98	120.42	125.77	117.34	125.11	105.93	117.55	115.90	107.94
2005-06		131.64	134.39	117.58	132.36	137.09	123.41	145.90	105.65	125.03	119.49	110.66
2006-07		141.87	148.21	123.70	141.21	149.43	131.64	148.96	105.76	133.82	124.53	120.91
2007-08		158.90	174.36	133.79	154.47	158.48	141.08	155.55	107.86	140.88	138.28	132.23
2007	Nov.	153.87	167.22	131.84	151.73	154.36	138.31	146.85	106.21	139.17	134.36	129.81
	Dec.	154.77	167.85	132.52	153.10	156.37	139.58	147.17	106.24	139.46	135.29	130.05
2008	Jan.	157.73	172.96	133.03	154.61	160.04	140.44	148.21	106.31	139.51	137.33	130.61
	Feb.	158.50	172.16	133.42	156.25	160.45	141.41	153.16	106.31	139.60	141.52	131.34
	Mar.	163.38	180.52	135.89	158.04	164.25	142.91	158.04	106.51	139.85	145.69	131.46
	Apr.	168.34	188.37	138.44	159.79	164.27	145.33	171.59	106.60	142.87	146.15	132.57
	May.	172.87	196.28	139.96	161.66	165.40	147.52	173.39	116.10	147.41	147.86	141.43
	Jun.	176.50	201.12	141.07	163.89	168.25	148.82	181.87	116.35	149.77	150.02	141.76
	Jul.	182.39	206.85	146.84	166.34	182.14	151.13	200.61	117.96	151.59	151.98	141.93
	Aug.	186.29	212.21	148.78	169.02	183.62	153.45	205.95	118.27	159.46	154.34	142.06
	Sep.	188.10	214.13	150.58	171.70	185.55	155.01	205.24	118.80	160.26	155.94	143.40
	Oct.	192.08	221.44	151.62	174.44	185.90	156.97	204.43	119.17	160.80	159.76	145.96
	Nov.	191.85	218.12	152.74	177.22	203.62	159.08	188.88	119.47	161.90	161.71	146.10

Source : Federal Bureau of Statistics

Index Numbers of Consumer Prices (2000 - 01=100)



Index Numbers of Wholesale Prices (2000- 01=100)



8.2 Index Numbers of Wholesale Prices by Commodity Groups (2000-01=100)

Year/ Month	General	Food	Raw Materials	Fuel,Lighting and Lubricants	Manufactures	Building Materials
2003-04	116.29	112.98	135.12	119.23	111.83	126.46
2004-05	124.14	125.03	110.44	138.01	113.05	143.79
2005-06	136.68	133.78	121.93	174.57	115.39	144.18
2006-07	146.18	145.67	138.85	184.10	119.91	151.93
2007-08	170.15	173.27	156.57	223.34	128.33	177.18
2007						
Nov.	163.93	167.14	155.48	213.00	125.00	162.58
Dec.	163.83	168.26	153.50	209.78	125.67	163.21
2008						
Jan.	166.75	172.50	155.02	211.06	127.50	169.43
Feb.	168.81	172.40	155.08	218.11	129.47	174.18
Mar.	175.55	177.57	159.67	233.17	132.10	187.03
Apr.	183.09	184.07	161.68	252.61	132.95	201.26
May.	192.19	194.26	166.70	271.03	135.07	207.80
Jun.	197.92	199.37	175.92	281.15	136.91	216.59
Jul.	206.53	206.37	179.02	303.30	139.37	227.27
Aug.	211.60	211.91	189.96	306.21	144.00	229.47
Sep.	211.02	213.62	186.88	299.99	145.12	226.25
Oct.	207.08	219.58	176.03	271.12	145.01	226.74
Nov.	196.50	215.97	173.65	232.07	140.24	224.81

Source : Federal Bureau of Statistics

8.3 Combined Sensitive Price Indicator (SPI)

by Income Groups
(2000-01 =100)

Year/ Month		INCOME GROUP				Combined
		Group-I	Group-II	Group-III	Group-IV	
		Up to Rs.3000	Rs.3001 to Rs.5000	Rs.5001 to Rs.12000	Above Rs.12000	
2003-04		114.38	114.88	114.32	114.58	113.93
2004-05		127.59	127.50	127.01	127.35	126.52
2005-06		136.56	136.15	135.99	139.80	136.43
2006-07		151.34	150.44	149.97	152.32	149.29
2007-08		176.77	175.15	172.60	170.45	170.55
2007	Nov.	169.61	168.22	166.08	163.93	163.89
	Dec.	172.07	170.48	168.06	165.26	165.41
2008	Jan.	176.65	174.65	171.63	167.85	168.24
	Feb.	174.31	172.38	169.88	167.24	166.94
	Mar.	180.27	178.26	175.95	174.61	173.96
	Apr.	190.14	188.44	184.97	182.57	183.29
	May.	200.42	198.16	193.46	189.45	191.49
	Jun.	203.55	201.13	196.31	191.79	194.10
	Jul.	211.22	208.41	204.97	202.67	202.94
	Aug.	216.17	212.99	210.75	210.09	208.85
	Sep.	217.27	213.96	211.75	210.65	209.52
	Oct.	223.14	219.50	216.66	213.47	213.37
	Nov.	220.13	217.61	215.14	210.49	211.03

Note: SPI figures revised as it is computed on 53 items instead of 51 items.

Source : Federal Bureau of Statistics

8.4 Bullion Prices

(Rupees per 10 grams)

Year / Month	GOLD TEZABI		SILVER TEZABI		
	Karachi	Lahore	Karachi	Lahore	
2003-04	7,328	7,337	92	111	
2004-05	8,216	8,238	118	138	
2005-06	10,317	10,307	180	176	
2006-07	12,619	12,603	228	231	
2007-08	16,695	16,635	306	306	
2007	Nov.	15,787	15,740	273	275
	Dec.	15,870	15,794	275	281
2008	Jan.	17,562	17,473	309	302
	Feb.	18,681	18,599	345	340
	Mar.	19,732	19,694	400	416
	Apr.	19,109	19,048	361	359
	May.	19,620	19,621	362	359
	Jun.	19,633	19,616	358	359
	Jul.	21,413	21,304	388	385
	Aug.	20,502	20,499	367	368
	Sep.	20,304	20,280	358	351
	Oct.	22,034	21,832	331	322
	Nov.	20,043	19,956	293	303

Figures are monthly / yearly averages

Source: Daily Business Recorder