

## 6.1 Government of Pakistan Treasury Bills

(Million Rupees)

PERIOD	3 months Government of Pakistan Treasury Bills						6 months Government of Pakistan Treasury Bills		
	Discount		Discharged	Discount		Outstanding Balance	Discount		Discharged
	Issue	Allowed		Paid	Issue		Allowed		
2005 Jun.	74,533.5	1,237.8	76,332.8	867.2	254,698.5	59,097.9	273.1	-	
Dec.	2,734.1	50.9	8,280.6	154.4	14,615.3	1,728.9	71.1	59,097.9	
2006 Jun.	1,800.8	34.2	12,109.3	225.7	2,095.3	623.8	26.2	1,728.9	
Dec.	793.6	15.8	27,846.2	553.8	20,995.0	5,124.8	225.2	623.8	
2007 Jun.	-	-	5,147.5	102.5	3,001.7	299.7	13.3	5,124.8	
Dec.	7,912.0	164.8	-	-	8,026.0	17,332.5	793.6	300.0	
2008 Jun.	65,661.5	1,668.2	489.3	10.8	90,645.9	3,441.3	192.4	17,332.5	
Dec.	146,373.8	4,662.8	49,133.6	1,420.6	412,083.6	6,169.5	431.0	3,441.3	
Jun.	47.0	1.40	44.730	1.19	8,541.2	9,219.0	576.1	6,169.5	
2008 Jun.	65,661.5	1,668.2	489.3	10.8	90,645.9	3,441.3	192.4	17,332.5	
Jul.	165,193.3	4,444.0	21,251.1	470.4	234,588.0	-	-	1,414.5	
Aug.	72,051.4	2,027.2	57,333.3	1,440.6	249,306.3	-	-	15,643.8	
Sep.	49,133.6	1,420.6	86,916.5	2,286.8	211,523.4	301.9	19.1	7,799.5	
Oct.	111,148.3	3,229.8	90,338.4	2,471.4	239,010.9	1,553.0	98.1	11,777.0	
Nov.	154,561.5	4,774.9	72,051.4	2,027.2	314,843.4	1,892.3	132.2	3,470.7	
Dec.	146,373.8	4,662.8	49,133.6	1,420.6	412,083.6	6,169.5	431.0	3,441.3	
2009 Jan.	153,983.5	4,871.7	164,080.9	4,802.0	401,986.2	26,332.9	1,837.1	-	
Feb.	56,651.6	1,742.2	181,630.0	5,751.5	277,007.7	82,444.1	5,528.5	-	
Mar.	44,726.9	1,185.5	130,408.7	4,130.4	191,325.9	48,560.3	2,834.7	301.9	
Apr.	5,955.8	173.8	89,947.4	2,855.3	107,334.4	13,301.3	848.7	1,553.0	
May.	2,538.3	75.7	56,651.6	1,742.2	53,221.2	8,758.8	573.2	1,892.3	
Jun.	47.0	1.40	44.730	1.19	8,541.2	9,219.0	576.1	6,169.5	

Note : Six months Government of Pakistan Treasury Bills restarted w. e. f. June 1998 and 3 & 12 months Government of Pakistan Treasury Bills restarted w.e.f July 1998.

## 6.1 Government of Pakistan Treasury Bills

(Million Rupees)

PERIOD	6 months Government of Pakistan Treasury Bills		12 months Government of Pakistan Treasury Bills (Auctioned and Rollover)					
	Discount Paid	Outstanding Balance	Issue	Discount Allowed	Discharged	Discount Paid	Outstanding Balance	
2005	Jun.	-	132,708.3	48,360.1	1,229.2	-	-	65,798.8
	Dec.	2,335.8	59,159.9	82,036.8	7,174.7	-	-	329,870.2
2006	Jun.	71.1	7,934.1	28,686.2	2,513.8	48,360.1	4,039.9	422,647.0
	Dec.	26.2	43,288.7	47,687.7	4,282.3	82,150.5	7,184.7	344,177.0
2007	Jun.	225.2	45,252.8	49,979.6	4,550.4	28,686.2	2,513.8	607,844.1
	Dec.	13.3	31,126.8	26,706.0	2,504.0	47,687.7	4,282.3	686,517.2
2008	Jun.	793.6	43,546.7	9,559.4	1,094.0	49,979.6	4,550.4	402,783.9
	Dec.	192.4	9,916.8	-	-	26,706.0	2,503.9	136,100.5
	Jun.	431.0	188,606.3	101,872.0	12,847.3	9,559.4	1,094.4	598,990.5
2008	Jun.	793.6	43,546.7	9,559.4	1,094.0	49,979.6	4,550.4	402,783.9
	Jul.	65.5	42,132.2	5,495.6	647.4	115,818.9	10,598.8	292,460.6
	Aug.	756.2	26,488.5	-	-	28,429.7	2,670.3	264,030.9
	Sep.	382.0	18,990.9	-	-	42,788.8	4,010.7	221,242.2
	Oct.	579.2	9,247.7	443.5	0.6	20,067.2	1,880.5	221,507.6
	Nov.	171.2	7,188.5	1.2	0.2	38,813.0	3,636.1	162,806.6
	Dec.	192.4	9,916.8	-	-	26,706.0	2,503.9	136,100.5
2009	Jan.	-	36,239.6	48,904.3	6,933.5	20,641.3	1,947.0	164,363.5
	Feb.	-	118,863.7	141,104.1	18,723.3	47,039.1	4,660.8	258,428.5
	Mar.	19.1	166,942.2	99,893.9	11,769.5	20,477.2	2,057.9	337,845.2
	Apr.	98.1	178,690.4	111,192.5	14,484.5	16,546.4	1,670.8	432,491.4
	May.	132.2	185,556.9	90,083.3	11,893.9	15,896.9	1,614.1	506,677.9
	Jun.	431.0	188,606.3	101,872.0	12,847.3	9,559.4	1,094.4	598,990.5

Source: Financial Markets Strategy & Conduct Department, SBP

## 6.2 Sale / Purchase of Treasury Bills under Open Market Operation by SBP with Banks

### SALE

(Billion Rupees )

PERIOD	2004-05		2005-06		2006-07		2007-08		2008-09	
	Bid Amount		Bid Amount		Bid Amount		Bid Amount		Bid Amount	
	Offered	Accepted	Offered	Accepted	Offered	Offered	Accepted	Accepted	Accepted	Accepted
July	74.3	71.5	56.5	46.8	159.3	133.5	187.8	141.8	508.0	367.9
August	66.9	57.9	86.0	65.2	131.9	105.7	272.9	228.3	71.1	41.2
September	13.2	4.0	83.9	69.7	107.0	87.0	81.1	71.3	15.7	9.5
October	61.8	52.6	14.0	9.0	92.9	81.3	-	-	44.8	36.0
November	59.9	42.4	32.0	26.5	71.5	61.9	163.8	124.7	413.5	223.7
December	103.2	95.2	159.2	95.9	124.7	117.2	86.8	69.0	184.3	124.6
January	15.4	6.5	82.5	67.1	69.6	60.2	74.7	52.3	280.5	178.9
February	60.8	56.6	80.5	64.7	23.9	11.7	95.4	70.9	238.6	142.1
March	83.7	60.8	44.5	41.1	50.2	42.1	113.2	77.7	89.1	71.3
April	90.9	49.6	-	-	119.0	88.8	160.2	129.9	37.8	24.3
May	73.1	49.2	6.6	4.0	27.0	11.4	126.4	80.6	18.5	15.8
June	95.5	64.9	235.4	153.8	161.8	135.3	290.6	200.4	187.5	114.9
<b>Average</b>										
per month	66.6	50.9	73.4	53.7	94.9	78.0	137.7	103.9	174.1	112.5
per day	2.2	1.7	2.5	1.8	3.2	2.6	4.6	3.5	5.8	3.8

### PURCHASE

PERIOD	2004-05		2005-06		2006-07		2007-08		2008-09	
	Amount		Amount		Amount		Amount		Amount	
	Offered	Injected	Offered	Injected	Offered	Injected	Offered	Injected	Offered	Injected
July	-	-	-	-	-	-	-	-	-	-
August	-	-	11.2	8.3	27.2	21.2	-	-	117.0	78.2
September	-	-	-	-	-	-	-	-	259.2	176.4
October	16.1	14.0	66.9	38.5	-	-	40.9	40.9	214.8	187.3
November	-	-	123.6	74.1	-	-	-	-	39.9	39.4
December	-	-	-	-	31.3	25.8	-	-	15.9	11.2
January	40.3	21.3	139.6	111.5	-	-	41.6	27.5	-	-
February	-	-	60.6	42.8	-	-	-	-	-	-
March	-	-	12.7	10.7	51.1	25.0	102.7	82.1	85.1	60.0
April	-	-	210.5	96.9	-	-	50.1	40.1	378.4	176.8
May	20.0	9.0	91.4	46.7	-	-	63.6	41.8	342.5	237.7
June	-	-	-	-	-	-	-	-	186.3	165.0
<b>Average</b>										
per month	6.4	3.7	59.7	35.8	9.1	6.0	24.9	19.4	136.6	9.43
per day	0.2	0.1	2.0	1.2	0.3	0.2	0.8	0.7	4.6	0.3

Source: Domestic Markets & Monetary Management Department, SBP

## 6.3 SBP 3-Day Repo Facility MTBs / FIBs / PIBs (Outstanding)

### Cash Accommodation

(Million Rupees)

PERIOD	2003-04	2004-05	2005-06	2006-07	2007-08	2008-09
July	-	700	23,861	38,883	111,817	24,227
August	-	10,600	48,241	19,032	68,490	42,861
September	-	84,760	45,245	66,715	121,825	254,378
October	10,440	63,324	116,512	27,670	575,455	55,638
November	400	14,098	91,780	77,702	126,045	149,228
December	-	-	4,520	35,573	427,940	105,625
January	1,350	115,134	29,760	7,718	129,107	66,000
February	8,340	-	12,032	34,435	80,755	6,150
March	-	21,695	47,815	75,895	89,772	69,930
April	24,745	800	243,238	51,327	51,609	71,257
May	1,245	70,787	55,246	174,980	93,458	2,200
June	-	139,550	44,019	76,830	96,792	27,050
<b>Average</b>						
per month	3,877	43,454	63,522	57,230	164,422	72,879
per day	129	1,448	2,117	1,908	5,481	2,429

### SBP 3-Day Repo Rates

(Percent per annum)

PERIOD	2003-04	2004-05	2005-06	2006-07	2007-08	2008-09
July	7.50	7.50	9.00	9.50	9.50	13.00
August	7.50	7.50	9.00	9.50	10.00	13.00
September	7.50	7.50	9.00	9.50	10.00	13.00
October	7.50	7.50	9.00	9.50	10.00	13.00
November	7.50	7.50	9.00	9.50	10.00	15.00
December	7.50	7.50	9.00	9.50	10.00	15.00
January	7.50	7.50	9.00	9.50	10.00	15.00
February	7.50	7.50	9.00	9.50	10.50	15.00
March	7.50	7.50	9.00	9.50	10.50	15.00
April	7.50	9.00	9.00	9.50	10.50	14.00
May	7.50	9.00	9.00	9.50	12.00	14.00
June	7.50	9.00	9.00	9.50	12.00	14.00

Note: Rates applicable against T-bills & FIBs, PIBs

Source: Domestic Markets & Monetary Management Department, SBP

## 6.4 Auction of Government of Pakistan Market Treasury Bills (Auction Wise)

(Million Rupees)

AUCTION SETTLEMENT DATE	3 Months Treasury Bills				6 Months Treasury Bills	
	Amount Offered	Amount Accepted	Cut-off Yield ( % )	Weighted Average ( % )	Amount Offered	Amount Accepted
<b>2007-08</b>						
05-06-08	54,954	54,954	11.2331	10.9769	4,300	3,300
19-06-08	15,901	12,376	11.4161	11.3163	330	330
<b>2008-09</b>						
03-07-08	79,328	76,828	11.5534	11.4512	-	-
17-07-08	50,504	50,504	11.7825	11.6528	-	-
31-07-08	92,270	41,070	12.1954	12.1688	-	-
15-08-08	40,350	37,000	12.2959	12.2205	-	-
28-08-08	35,702	35,702	12.5631	12.3874	-	-
11-09-08	45,796	14,759	12.5631	12.5631	650	Rejected
25-09-08	60,245	34,945	12.5631	12.5631	771	321
09-10-08	71,755	52,605	12.5518	12.5518	100	Rejected
23-10-08	66,500	61,600	12.5631	12.5625	600	500
06-11-08	53,571	53,071	13.5313	12.9066	1,700	Rejected
20-11-08	123,667	104,800	13.8549	13.6934	2,500	2,000
04-12-08	153,351	82,550	13.8549	13.8437	4,075	Rejected
18-12-08	87,300	68,450	13.8549	13.8397	6,500	-
02-01-09	77,908	65,908	13.9750	13.8472	1,860	1,360
15-01-09	138,025	45,850	13.8549	13.8545	14,600	10,100
29-01-09	76,385	45,484	13.7624	13.7338	17,200	16,700
12-02-09	57,550	52,350	13.6237	13.4553	62,800	55,450
26-02-09	36,350	6,033	12.6091	12.5629	84,850	32,500
12-03-09	45,200	35,400	11.6908	11.4779	48,855	31,172
26-03-09	16,463	10,463	11.7367	11.6498	25,523	20,223
09-04-09	3,820.	3,520	12.6552	12.5336	13,350	11,750
23-04-09	1,600	1,100	12.9775	12.8896	5,200	2,400
07-05-09	5,835.00	2,600	12.9775	12.9678	5,907	5,307
21-05-09	2,800.00	Rejected	Rejected	Rejected	5,650	4,025
04-06-09	1,100.00	Rejected	Rejected	Rejected	10,364	4,564
18-06-09	2,550.00	Rejected	Rejected	Rejected	15,312	5,231

## 6.4 Auction of Government of Pakistan Market Treasury Bills (Auction Wise)

(Million Rupees)

AUCTION SETTLEMENT  DATE	6 Months Treasury Bills		12 Months Treasury Bills			
	Cutt-off Yield ( % )	Weighted Average ( % )	Amount Offered	Amount Accepted	Cutt-off Yield ( % )	Weighted Average ( % )
<b>2007-08</b>						
05-06-08	11.2464	11.1894	10,500	7,500	11.4893	11.3931
19-06-08	11.4927	11.4723	3,154	3,154	11.7390	11.6881
<b>2008-09</b>						
03-07-08	-	-	8,423	2,223	11.7891	11.7841
17-07-08	-	-	5,833	3,833	11.8392	11.8294
31-07-08	-	-	5,300	Rejected	Rejected	Rejected
15-08-08	-	-	58	Rejected	Rejected	Rejected
28-08-08	-	-	-	-	-	-
11-09-08	Rejected	Rejected	-	-	-	-
25-09-08	12.6876	12.6876	50	Rejected	Rejected	Rejected
09-10-08	Rejected	Rejected	-	-	-	-
23-10-08	12.6649	12.6649	500	500	12.7873	12.7873
06-11-08	Rejected	Rejected	1,500	Rejected	Rejected	Rejected
20-11-08	14.0108	14.0108	3,000	Rejected	Rejected	12.7873
04-12-08	14.0100	14.0108	1,000	Rejected	Rejected	Rejected
18-12-08	14.0108	14.0108	-	Rejected	-	-
02-01-09	13.9959	13.9959	3,000	3,000	14.2595	14.2529
15-01-09	14.0108	14.0093	37,357	29,107	14.2857	14.2609
29-01-09	14.0108	13.9958	105,435	22,600	14.2072	14.1589
12-02-09	13.8731	13.7357	256,900	59,800	13.9074	13.8408
26-02-09	12.9828	12.9600	241,023	100,000	13.0044	12.9881
12-03-09	11.7845	11.6684	174,404	53,685	11.8518	11.7781
26-03-09	11.8970	11.7665	87,510	58,260	11.9522	11.8475
09-04-09	12.9828	12.7641	63,030	54,930	13.4928	12.9687
23-04-09	13.0737	12.9524	125,570	69,445	13.2738	13.1351
07-05-09	13.1876	13.1105	128,030	72,745	13.2995	13.2294
21-05-09	13.1876	13.1423	71,372	55,799	13.2995	13.2648
04-06-09	13.1420	13.1395	137,704	55,799	13.2481	13.2297
18-06-09	12.4385	12.0059	113,934	58,318	12.2418	12.0882

Source: Domestic Markets & Monetary Management Department, SBP

## 6.5 Auction of Pakistan Investment Bonds (PIBs)

(Million Rupees)

AUCTION SETTLEMENT DATE	Tenure	Coupon Rate (%)	Amount Offered	Amount Accepted	Price Accepted = Rs.100	Cut-off Yield Accepted (%)	Weighted Average Yield Accepted (%)
<b>2008-09</b>							
<b>30-08-08</b>	3-Years	11.25	375.00	187.50	94.14	13.6973	13.6973
	5-Years	11.50	450.00	Rejected	-	-	-
	7-Years	11.75	325.00	200.00	88.79	14.3398	14.3278
	10-Years	12.00	2,490.00	688.30	86.78	14.5493	14.4724
	15-Years	12.50	50.00	56.00	86.55	14.7500	14.7500
	20-Years	13.00	-	-	-	-	-
	30-Years	13.75	2,500.00	2,500.00	92.15	14.9384	14.6078
<b>19-02-09</b>	3-Years	11.25	11,175.00	3,977.50	94.40	13.9530	13.8806
	5-Years	11.50	8,650.00	3,023.20	90.68	14.3692	14.3350
	7-Years	11.75	3,925.00	2,735.00	87.51	14.7973	14.7030
	10-Years	12.00	21,760.00	7,821.00	85.28	14.9444	14.8642
	15-Years	12.50	2,480.00	1,180.00	82.85	15.4995	15.3557
	20-Years	13.00	3,500.00	1,500.00	82.67	15.8998	15.7002
	30-Years	13.75	4,500.00	2,000.00	83.73	16.4496	16.2248
<b>16-04-09</b>	3-Years	11.25	5,746.00	3,071.50	96.61	12.9385	12.7670
	5-Years	11.50	6,579.00	2,830.00	95.24	12.9495	12.8620
	7-Years	11.75	4,975.00	2,592.00	94.09	13.1395	13.0505
	10-Years	12.00	27,425.00	14,156.00	93.41	13.2409	13.0672
	15-Years	12.50	1,800.00	63.40	91.92	13.8007	13.8007
	20-Years	13.00	1,300.00	200.00	91.80	14.2492	14.2492
	30-Years	13.75	1,500.00	100.00	94.87	14.4995	14.4995
<b>28-05-09</b>	3-Years	11.25	3,825.00	2,866.50	97.56	12.5018	12.3066
	5-Years	11.50	5,795.00	2,988.00	97.00	12.4151	12.3721
	7-Years	11.75	3,000.00	1,800.00	96.43	12.5807	12.5159
	10-Years	12.00	32,180.00	12,365.50	96.57	12.6303	12.5714
	15-Years	12.50	1,500.00	103.00	94.35	13.3900	13.3900
	20-Years	13.00	200.00	200.00	94.59	13.8004	13.8004
	30-Years	13.75	2,000.00	2,000.00	96.16	14.3003	14.3003

Source: Domestic Markets & Monetary Management Department, SBP

## 6.6 Monthly KIBOR

(Percent per annum)

Period	1 Week		2 Week		1Month		3 Month		6 Month		9 Month		12 Month		
	Bid	Offer	Bid	Offer	Bid	Offer	Bid	Offer	Bid	Offer	Bid	Offer	Bid	Offer	
<b>2008</b> Jun.	Month Average	11.51	12.51	11.96	12.46	12.27	12.77	12.58	13.08	12.82	13.32	13.01	13.51	13.19	13.69
	End-Month	12.22	13.22	12.79	13.29	13.14	13.64	13.38	13.88	13.69	14.19	13.86	14.36	13.97	14.47
Jul.	Month Average	10.77	11.77	11.41	11.91	12.32	12.82	13.34	13.84	13.61	14.11	13.81	14.31	13.97	14.47
	End-Month	10.77	11.77	11.36	11.86	12.12	12.62	12.70	13.20	12.98	13.48	13.27	13.77	13.51	14.01
Aug.	Month Average	11.65	12.65	12.07	12.57	12.46	12.96	12.84	13.34	13.07	13.57	13.30	13.80	13.53	14.03
	End-Month	11.43	12.43	11.98	12.48	12.60	13.10	13.10	13.60	13.26	13.76	13.44	13.94	13.65	14.15
Sep.	Month Average	12.94	13.94	13.20	13.70	13.31	13.81	13.42	13.92	13.51	14.01	13.63	14.13	13.80	14.30
	End-Month	14.07	15.07	14.04	14.54	14.02	14.52	13.99	14.49	14.02	14.52	14.08	14.58	14.16	14.66
Oct.	Month Average	13.00	14.00	13.38	13.88	13.74	14.24	14.09	14.59	14.27	14.77	14.37	14.87	14.48	14.98
	End-Month	12.55	13.55	12.91	13.41	13.62	14.12	14.30	14.80	14.60	15.10	14.73	15.23	14.87	15.37
Nov.	Month Average	10.80	11.48	11.76	12.27	13.78	14.28	15.00	15.35	15.26	15.60	15.34	15.84	15.44	15.94
	End-Month	10.60	11.10	11.26	11.76	13.58	14.08	15.22	15.47	15.42	15.67	15.48	15.98	15.56	16.06
Dec.	Month Average	9.77	10.27	11.29	11.79	13.78	14.28	15.23	15.48	15.42	15.67	15.50	16.00	15.57	16.07
	End-Month	14.27	14.77	14.02	14.52	14.17	14.67	15.27	15.52	15.45	15.70	15.52	16.02	15.61	16.11
<b>2009</b> Jan.	Month Average	10.51	11.01	11.32	11.82	12.86	13.36	14.71	14.96	15.21	15.46	15.41	15.91	15.52	16.02
	End-Month	10.01	10.51	10.79	11.29	12.30	12.80	14.16	14.41	14.85	15.10	15.28	15.78	15.44	15.94
Feb.	Month Average	10.74	11.24	11.31	11.81	11.98	12.48	13.50	13.75	13.95	14.20	14.68	15.18	14.98	15.48
	End-Month	10.34	10.84	10.47	10.97	10.87	11.37	12.14	12.39	12.76	13.01	13.46	13.96	13.93	14.43
Mar.	Month Average	11.56	12.06	11.52	12.02	11.58	12.08	11.91	12.16	12.29	12.54	13.06	13.56	13.50	14.00
	End-Month	13.46	13.96	12.95	13.45	12.62	13.12	12.52	12.77	12.60	12.85	13.00	13.50	13.41	13.91
Apr.	Month Average	12.80	13.30	12.81	13.31	12.82	13.32	12.90	13.15	13.02	13.27	13.25	13.75	13.50	14.00
	End-Month	12.96	13.46	12.87	13.37	12.87	13.37	12.99	13.24	13.10	13.35	13.24	13.74	13.45	13.95
May.	Month Average	12.79	13.29	12.88	13.38	12.97	13.47	13.23	13.48	13.29	13.54	13.36	13.86	13.50	14.00
	End-Month	12.83	13.33	12.89	13.39	13.02	13.52	13.47	13.72	13.50	13.75	13.53	14.03	13.59	14.09
Jun.	Month Average	12.29	12.79	12.55	13.05	12.85	13.35	12.90	13.15	12.93	13.18	13.09	13.59	13.24	13.74
	End-Month	12.99	13.49	12.83	13.33	12.76	13.26	12.52	12.77	12.51	12.76	12.69	13.19	12.81	13.31

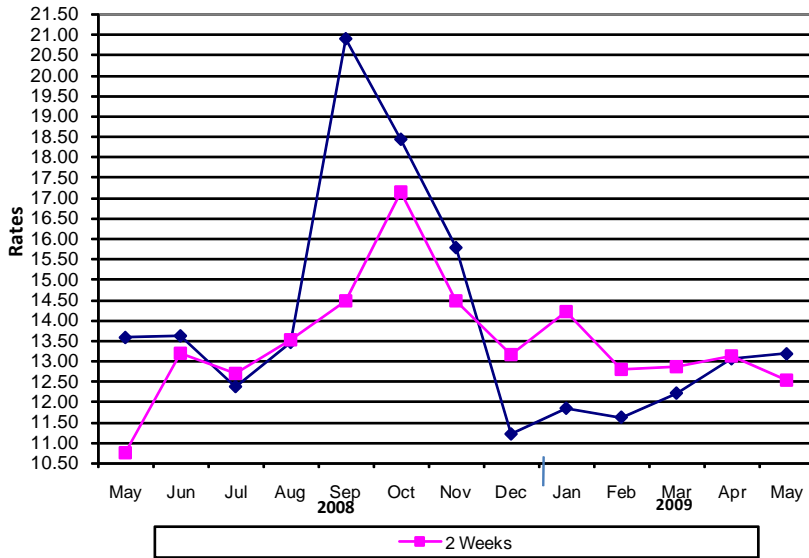
KIBOR :Karachi Interbank Offered Rate

Source: Domestic Markets & Monetary Management Department, SBP

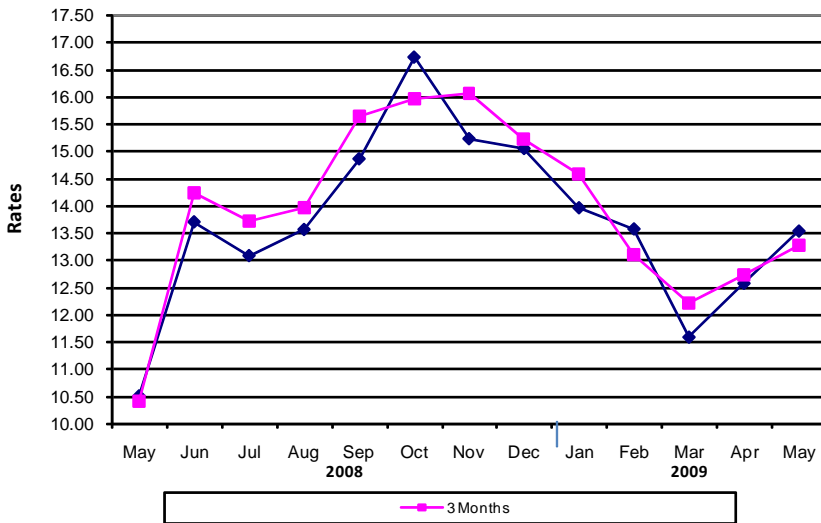


## Inter- Bank Average Call Rates

### Weekly



### Monthly



## 6.7 Indicative Inter-Bank Average Call Rates

(% Per Annum)

Period	Overnight	1 Week	2 Week	1 Month	3 Month	6 Month	1 Year
<b>2008</b> Jun.	13.55	13.61	13.18	13.70	14.24	13.75	-
Jul.	11.61	12.37	12.69	13.08	13.72	-	-
Aug.	12.93	13.45	13.53	13.56	13.96	-	-
Sep.	16.08	20.88	14.46	14.86	15.65	15.97	-
Oct.	20.03	18.42	17.14	16.73	15.96	-	-
Nov.	13.61	15.77	14.46	15.23	16.06	-	-
Dec.	10.98	11.21	13.16	15.05	15.23	-	-
<b>2009</b> Jan.	12.05	11.84	14.21	13.96	14.58	14.65	-
Feb.	11.45	11.62	12.80	13.57	13.11	14.03	-
Mar.	12.84	12.21	12.86	11.58	12.22	12.29	-
Apr.	12.65	13.05	13.13	12.57	12.73	13.07	-
May	12.35	13.17	12.52	13.53	13.28	13.36	-
Jun.	11.35	12.68	13.01	13.01	12.77	13.20	-

Source: Domestic Markets & Monetary Management Department, SBP

## 6.8 SBP Rates for Market to Market (M2M) of Major Currencies

MONTH	US Dollar			Euro			Japanese Yen			Pound Sterling		
	Ready	1Week	1 Month	Ready	1Week	1 Month	Ready	1Week	1 Month	Ready	1Week	1 Month
01-Jun-09	81.1959	81.3515	81.9477	115.6230	115.8386	116.6673	0.8584	0.8601	0.8667	133.2750	133.5270	134.4974
02-Jun-09	81.0638	81.2295	81.8045	114.5067	114.7359	115.5271	0.8400	0.8417	0.8480	132.8392	133.1073	134.0411
03-Jun-09	80.8096	80.9940	81.6331	114.9678	115.2247	116.1096	0.8392	0.8412	0.8481	133.8732	134.1765	135.2313
04-Jun-09	80.7105	80.8982	81.5195	114.6613	114.9199	115.7781	0.8377	0.8397	0.8464	132.2966	132.6023	133.6136
05-Jun-09	80.8176	80.9632	81.5698	114.6196	114.8174	115.6497	0.8353	0.8369	0.8434	129.5992	129.8297	130.7925
06-Jun-09	80.8055	80.9737	81.5602	112.8732	113.0999	113.8927	0.8183	0.8201	0.8263	129.1717	129.4377	130.3670
08-Jun-09	80.7759	80.9382	81.5106	112.0524	112.2693	113.0372	0.8216	0.8233	0.8294	128.0460	128.3010	129.1999
09-Jun-09	81.0628	81.2134	81.7689	112.9650	113.1666	113.9106	0.8272	0.8288	0.8347	130.7745	131.0141	131.9054
10-Jun-09	81.0617	81.1944	81.7368	114.4145	114.5919	115.3277	0.8305	0.8319	0.8376	132.8479	133.0625	133.9455
11-Jun-09	80.8275	80.9359	81.4798	113.3485	113.4916	114.2310	0.8265	0.8277	0.8335	133.0704	133.2453	134.1336
12-Jun-09	81.0123	81.1111	81.6057	113.8263	113.9565	114.6295	0.8256	0.8267	0.8319	133.3664	133.5251	134.3336
13-Jun-09	81.0762	81.2270	81.7171	113.5554	113.7574	114.4203	0.8242	0.8258	0.8310	133.3177	133.5625	134.3618
15-Jun-09	80.9882	81.1773	81.7315	112.2374	112.4900	113.2381	0.8248	0.8268	0.8326	132.4075	132.7135	133.6125
16-Jun-09	81.0671	81.2534	81.8089	112.7846	113.0349	113.7856	0.8370	0.8389	0.8449	133.3554	133.6593	134.5671
17-Jun-09	80.9260	81.1254	81.7048	112.2322	112.4999	113.2835	0.8409	0.8430	0.8493	131.8567	132.1792	133.1182
18-Jun-09	81.1434	81.3530	81.9776	112.9759	113.2604	114.1135	0.8474	0.8496	0.8564	131.8336	132.1730	133.1840
19-Jun-09	81.1402	81.3275	81.9664	112.8539	113.1080	113.9817	0.8359	0.8378	0.8447	133.1836	133.4903	134.5345
20-Jun-09	81.3303	81.5189	82.1384	113.5127	113.7686	114.6188	0.8449	0.8469	0.8536	134.2397	134.5496	135.5676
22-Jun-09	81.2903	81.4736	82.0757	112.7009	112.9491	113.7670	0.8478	0.8498	0.8564	133.6901	133.9914	134.9761
23-Jun-09	81.3359	81.5236	82.1236	113.0812	113.3404	114.1598	0.8548	0.8569	0.8634	132.1708	132.4752	133.4444
24-Jun-09	81.5812	81.7953	82.3684	115.0580	115.3569	116.1541	0.8566	0.8590	0.8652	135.1718	135.5257	136.4694
25-Jun-09	81.4636	81.6265	82.2482	113.7925	114.0217	114.8872	0.8447	0.8465	0.8532	133.2419	133.5068	134.5213
26-Jun-09	81.3795	81.6190	82.1557	114.5619	114.9022	115.6534	0.8496	0.8522	0.8580	134.2598	134.6548	135.5359
27-Jun-09	81.4705	81.6874	82.2734	114.6168	114.9244	115.7433	0.8555	0.8579	0.8643	134.7482	135.1069	136.0716
29-Jun-09	81.4343	81.6321	82.2406	114.1098	114.3890	115.2358	0.8529	0.8551	0.8617	134.3299	134.6552	135.6543
30-Jun-09	81.4571	81.6661	82.2681	114.8016	115.0989	115.9403	0.8531	0.8553	0.8619	135.3939	135.7397	136.7357

## 6.8 SBP Rates for Market to Market (M2M) of Major Currencies

MONTH	Swiss Frank			Australian Dollar			Saudi Arabian Riyal			Kuwaiti Dinnar		
	Ready	1Week	1 Month	Ready	1Week	1 Month	Ready	1Week	1 Month	Ready	1Week	1 Month
01-Jun-09	76.4341	76.5854	77.1672	65.9636	66.0565	66.4288	21.6517	21.6934	21.8548	282.6174	283.1093	285.0107
02-Jun-09	75.6369	75.7961	76.3546	65.4874	65.5872	65.9414	21.6164	21.6606	21.8169	282.3883	282.9114	284.7452
03-Jun-09	75.7282	75.9064	76.5243	66.4619	66.5786	66.9851	21.5486	21.5981	21.7708	282.0581	282.6473	284.7085
04-Jun-09	75.6566	75.8372	76.4399	65.0526	65.1692	65.5567	21.5222	21.5717	21.7365	281.0596	281.6301	283.6942
05-Jun-09	75.5658	75.7070	76.2943	65.0905	65.1729	65.5486	21.5508	21.5900	21.7540	281.1538	281.5914	283.7704
06-Jun-09	74.4374	74.5971	75.1569	64.0990	64.1976	64.5515	21.5476	21.5928	21.7514	281.1117	281.6281	283.4906
08-Jun-09	73.7613	73.9143	74.4559	63.4535	63.5481	63.8888	21.5388	21.5828	21.7379	279.7921	280.2813	282.0434
09-Jun-09	74.4959	74.6386	75.1691	64.2868	64.3721	64.6952	21.6153	21.6562	21.8068	280.5912	281.1012	282.8689
10-Jun-09	75.4343	75.5615	76.0852	65.7329	65.8058	66.1284	21.6156	21.6510	21.7979	281.4888	281.8759	283.5377
11-Jun-09	74.8646	74.9693	75.4909	65.8057	65.8575	66.1852	21.5523	21.5818	21.7285	280.9682	281.2608	282.8569
12-Jun-09	75.3673	75.4641	75.9414	65.8427	65.8869	66.1736	21.6021	21.6295	21.7633	281.6251	281.8845	283.3580
13-Jun-09	75.0532	75.1976	75.6688	65.8582	65.9449	66.2284	21.6195	21.6607	21.7927	281.0661	281.5044	282.9587
15-Jun-09	74.1922	74.3705	74.8950	64.8108	64.9284	65.2567	21.5951	21.6466	21.7968	281.0235	281.5967	283.2832
16-Jun-09	74.7851	74.9622	75.4930	64.9145	65.0306	65.3528	21.6162	21.6674	21.8189	281.0390	281.5823	283.2423
17-Jun-09	74.3668	74.5554	75.1061	64.2067	64.3303	64.6728	21.5791	21.6331	21.7900	280.8321	281.4206	283.1563
18-Jun-09	75.1397	75.3390	75.9376	64.4278	64.5606	64.9426	21.6362	21.6924	21.8625	281.9192	282.5934	284.4224
19-Jun-09	74.6392	74.8170	75.4247	65.3706	65.4868	65.8857	21.6362	21.6869	21.8606	281.5415	282.0444	283.9155
20-Jun-09	75.3059	75.4868	76.0815	65.5726	65.6896	66.0732	21.7040	21.7551	21.9237	282.3479	282.8553	284.6592
22-Jun-09	74.8254	75.0003	75.5748	64.8168	64.9294	65.2950	21.6763	21.7257	21.8892	282.3708	282.8846	284.6540
23-Jun-09	75.1752	75.3553	75.9340	63.6738	63.7881	64.1380	21.6884	21.7391	21.9017	282.7009	283.2934	285.1070
24-Jun-09	76.5373	76.7455	77.3071	65.2772	65.4142	65.7518	21.7538	21.8114	21.9664	284.0817	284.7768	286.4889
25-Jun-09	74.5936	74.7498	75.3416	65.1180	65.2127	65.5958	21.7225	21.7668	21.9372	283.0712	283.5830	285.4750
26-Jun-09	74.8799	75.1096	75.6289	65.5756	65.7339	66.0468	21.7003	21.7654	21.9123	282.7689	283.5199	285.0846
27-Jun-09	75.3276	75.5379	76.1044	65.7752	65.9128	66.2690	21.7232	21.7817	21.9408	283.0951	283.8239	285.6320
29-Jun-09	74.7755	74.9661	75.5501	65.3429	65.4672	65.8233	21.7147	21.7684	21.9352	283.3236	283.9672	285.8305
30-Jun-09	75.3117	75.5105	76.0915	66.1147	66.2496	66.6096	21.7210	21.7775	21.9417	283.7386	284.3923	286.2146

Source: Domestic Markets & Monetary Management Department, SBP

## 6.9 Secondary Market Transactions in Government Securities

(Billion Rupees)

Security/Transactions	2008							2009						
	Jun.	Jul.	Aug.	Sep.	Oct.	Nov.	Dec.	Jan.	Feb.	Mar.	Apr.	May	Jun	
<b>PIBs</b>														
<b>Purchases</b>	<b>91.6</b>	<b>71.8</b>	<b>72.0</b>	<b>120.3</b>	<b>106.9</b>	<b>137.9</b>	<b>83.8</b>	<b>39.2</b>	<b>44.8</b>	<b>30.3</b>	<b>83.7</b>	<b>80.2</b>	<b>59.0</b>	
Non Banks	Repo	4.9	3.1	0.2	0.6	1.3	0.2	8.0	1.7	0.3	1.5	2.7	5.4	1.2
	Outright	4.6	1.1	3.2	0.5	1.1	0.2	2.2	0.3	7.4	2.0	6.9	5.9	1.4
Banks/PDs	Repo	65.3	58.0	46.9	40.9	47.6	54.7	40.7	26.0	22.3	14.5	20.5	8.2	25.9
	Outright	6.1	8.1	3.0	1.9	2.2	1.0	4.7	0.3	14.8	6.2	21.1	12.4	6.3
SBP	Repo	10.8	1.5	18.8	76.5	54.7	81.8	28.2	10.9	-	6.0	32.5	48.3	24.2
	Outright	-	-	-	-	-	-	-	-	-	-	-	-	-
<b>Sales</b>	<b>91.6</b>	<b>71.8</b>	<b>72.0</b>	<b>120.3</b>	<b>106.9</b>	<b>137.9</b>	<b>83.8</b>	<b>39.2</b>	<b>44.8</b>	<b>30.3</b>	<b>83.7</b>	<b>80.2</b>	<b>59.0</b>	
Non Banks	Repo	8.9	7.5	9.4	11.1	11.4	7.2	7.3	3.4	4.0	2.1	2.5	0.5	4.6
	Outright	0.2	0.7	0.3	0.3	-	0.5	2.0	0.1	2.7	1.4	1.0	1.3	1.0
Banks/PDs	Repo	72.1	55.1	56.4	107.0	92.2	129.5	69.6	35.3	18.6	19.9	53.2	61.4	46.7
	Outright	10.5	8.5	5.8	1.9	3.3	0.7	4.9	0.6	19.5	6.8	27.0	16.9	6.7
SBP	Repo	-	-	-	-	-	-	-	-	-	-	-	-	-
	Outright	-	-	-	-	-	-	-	-	-	-	-	-	-
<b>Net Position</b>	<b>-</b>	<b>-</b>	<b>-</b>	<b>-</b>	<b>-</b>	<b>-</b>	<b>-</b>	<b>-</b>	<b>-</b>	<b>-</b>	<b>-</b>	<b>-</b>	<b>-</b>	
<b>Treasury Bills</b>														
<b>Purchases</b>	<b>1,236.5</b>	<b>1,226.5</b>	<b>962.6</b>	<b>1,099.3</b>	<b>1,127.6</b>	<b>1,259.8</b>	<b>977.3</b>	<b>1,181.8</b>	<b>1,205.1</b>	<b>1,293.0</b>	<b>1,446.9</b>	<b>1,289.5</b>	<b>1,291.5</b>	
Non Banks	Repo	39.6	4.8	3.0	3.1	2.5	8.7	2.6	14.3	6.4	17.5	23.1	28.4	12.5
	Outright	9.9	4.1	8.4	6.3	1.8	20.3	21.1	29.6	11.3	28.4	40.5	26.4	27.5
Banks/PDs	Repo	1,046.8	1,128.9	763.2	703.1	912.0	1,106.1	808.3	964.6	1,017.1	996.7	969.0	933.1	1,007.3
	Outright	55.8	66.1	86.6	43.0	54.4	70.9	107.8	145.8	164.1	126.5	121.8	107.9	103.4
SBP	Repo	84.4	22.7	101.5	343.8	157.0	53.8	37.6	27.5	6.2	123.9	292.6	193.6	140.8
<b>Sales</b>	<b>1,236.5</b>	<b>1,226.5</b>	<b>962.6</b>	<b>1,099.3</b>	<b>1,127.6</b>	<b>1,259.8</b>	<b>977.3</b>	<b>1,181.8</b>	<b>1,205.1</b>	<b>1,293.0</b>	<b>1,446.9</b>	<b>1,289.5</b>	<b>1,291.5</b>	
Non Banks	Repo	33.0	66.2	47.4	42.0	49.6	31.2	51.8	72.0	78.7	72.4	95.4	44.7	75.9
	Outright	0.0	-	0.2	0.1	0.0	0.0	1.2	6.2	1.8	4.3	2.3	4.3	2.9
Banks/PDs	Repo	937.4	722.3	779.1	981.0	985.9	948.2	685.0	755.5	808.9	1,018.5	1,174.2	1,094.6	969.8
	Outright	65.7	70.2	94.8	49.3	56.1	91.1	127.6	169.1	173.6	126.5	160.0	130.1	128.0
SBP	Repo	200.4	367.9	41.2	27.0	36.0	189.2	111.6	178.9	142.1	71.3	15.0	15.8	114.9
<b>Net Position</b>	<b>-</b>	<b>-</b>	<b>-</b>	<b>-</b>	<b>-</b>	<b>-</b>	<b>-</b>	<b>-</b>	<b>-</b>	<b>-</b>	<b>-</b>	<b>-</b>	<b>-</b>	

PDs:Primary Dealers

Source: Domestic Markets & Monetary Management Department, SBP