

6.1 Government of Pakistan Treasury Bills

(Million Rupees)

PERIOD	3 months Government of Pakistan Treasury Bills					6 months Government of Pakistan Treasury Bills			
	Issue	Discount Allowed	Discharged	Discount Paid	Outstanding Balance	Issue	Discount Allowed	Discharged	
2003 Dec.	-	-	5,183.2	16.8	10,365.2	297.6	2.4	24,976.9	
2004 Jun.	-	-	20,926.6	73.4	30,356.2	-	-	297.6	
Dec.	15,113.8	136.2	17,332.4	117.6	61,089.6	-	-	-	
2005 Jun.	74,533.5	1,237.8	76,332.8	867.2	254,698.5	59,097.9	273.1	-	
Dec.	2,734.1	50.9	8,280.6	154.4	14,615.3	1,728.9	71.1	59,097.9	
2006 Jun.	1,800.8	34.2	12,109.3	225.7	2,095.3	623.8	26.2	1,728.9	
Dec.	793.6	15.8	27,846.2	553.8	20,995.0	5,124.8	225.2	623.8	
2007 Jun.	-	-	5,147.5	102.5	3,001.7	299.7	13.3	5,124.8	
Dec.	7,912.0	164.8	-	-	8,026.0	17,332.5	793.6	300.0	
2008 Jun.	65,661.5	1,668.2	489.3	10.8	90,645.9	3,441.3	192.4	17,332.5	
2007 Jun.	-	-	5,147.5	102.5	3,001.7	299.7	13.3	5,124.8	
Jul.	1,960.8	39.2	2,009.8	40.2	2,952.7	670.3	29.8	5,795.3	
Aug.	5,989.3	124.7	991.9	19.8	7,950.1	3,398.8	154.6	13,013.0	
Sep.	-	-	1,960.8	39.2	5,989.3	28.0	1.3	3,905.0	
Oct.	-	-	-	-	5,989.3	4,792.0	218.5	22,073.5	
Nov.	114.0	2.4	5,989.3	124.7	114.0	4,905.3	223.7	166.4	
Dec.	7,912.0	164.8	-	-	8,026.0	17,332.5	793.6	300.0	
2008 Jan.	9,911.4	207.4	114.0	2.4	18,195.6	1,414.5	65.5	2,156.2	
Feb.	19,551.0	423.0	6,856.3	143.7	30,518.1	15,643.8	756.2	1,912.8	
Mar.	489.3	10.8	10,850.7	226.1	20,156.8	7,799.5	382.0	28.0	
Apr.	10,001.4	220.1	116.4	2.4	30,041.8	11,777.0	579.5	4,792.0	
May.	14,983.0	336.8	19,551.0	423.0	25,473.7	3,470.7	171.2	4,905.3	
Jun.	65,661.5	1,668.2	489.3	10.8	90,645.9	3,441.3	192.4	17,332.5	

Note : Six months Government of Pakistan Treasury Bills restarted w. e. f. June 1998 and 3 & 12 months Government of Pakistan Treasury Bills restarted w.e.f July 1998.

6.1 Government of Pakistan Treasury Bills

(Million Rupees)

PERIOD	6 months Government of Pakistan Treasury Bills		12 months Government of Pakistan Treasury Bills (Auctioned and Rollover)				
	Discount Paid	Outstanding Balance	Issue	Discount Allowed	Discharged	Discount Paid	Outstanding Balance
2003 Dec.	223.1	78,346.6	392.3	7.7	18,829.1	820.9	297,695.1
2004 Jun.	2.4	78,909.1	-	-	25,403.2	596.8	236,420.9
2004 Dec.	-	118,457.3	-	-	196.1	3.9	91,601.7
2005 Jun.	-	132,708.3	48,360.1	1,229.2	-	-	65,798.8
2005 Dec.	2,335.8	59,159.9	82,036.8	7,174.7	-	-	329,870.2
2006 Jun.	71.1	7,934.1	28,686.2	2,513.8	48,360.1	4,039.9	422,647.0
2006 Dec.	26.2	43,288.7	47,687.7	4,282.3	82,150.5	7,184.7	344,177.0
2007 Jun.	225.2	45,252.8	49,979.6	4,550.4	28,686.2	2,513.8	607,844.1
2007 Dec.	13.3	31,126.8	26,706.0	2,504.0	47,687.7	4,282.3	686,517.2
2008 Jun.	793.6	43,546.7	9,559.4	1,094.0	49,979.6	4,550.4	402,783.9
2007 Jun.	225.2	45,252.8	49,979.6	4,550.4	28,686.2	2,513.8	607,844.1
2007 Jul.	254.7	40,127.7	106,673.7	9,744.0	37,889.9	3,321.1	676,627.9
2007 Aug.	571.9	30,513.5	37,574.9	3,525.1	490.9	44.1	713,711.9
2007 Sep.	171.8	26,636.5	42,788.8	4,010.7	4,782.8	429.5	751,717.9
2007 Oct.	976.5	9,355.1	20,067.2	1,880.5	22,781.3	2,045.7	749,003.8
2007 Nov.	7.4	14,094.0	38,813.0	3,636.1	80,318.0	7,205.0	707,498.8
2007 Dec.	13.3	31,126.8	26,706.0	2,504.0	47,687.7	4,282.3	686,517.2
2008 Jan.	97.2	31,774.8	20,641.3	1,947.0	118,397.9	10,631.8	642,680.3
2008 Feb.	87.2	44,116.0	47,039.2	4,660.8	82,327.2	7,392.9	553,472.6
2008 Mar.	1.3	51,887.5	20,477.2	2,058.0	61,562.8	5,531.9	512,386.9
2008 Apr.	218.5	58,872.5	16,546.4	1,670.8	75,813.9	6,856.1	453,119.4
2008 May.	223.7	57,437.9	15,896.9	1,614.1	25,812.1	2,340.9	443,204.2
2008 Jun.	793.6	43,546.7	9,559.4	1,094.0	49,979.6	4,550.4	402,783.9

Source: Financial Markets Strategy & Conduct Department, SBP

6.2 Sale / Purchase of Treasury Bills under Open Market Operation by SBP with Banks

SALE

(Billion Rupees)

PERIOD	2004-05		2005-06		2006-07		2007-08		2008-09	
	Bid Amount		Bid Amount		Bid Amount		Bid Amount		Bid Amount	
	Offered	Accepted	Offered	Accepted	Offered	Offered	Accepted	Accepted	Accepted	Accepted
July	74.3	71.5	56.5	46.8	159.3	133.5	191.8	141.8	508.0	367.9
August	66.9	57.9	86.0	65.2	131.9	105.7	272.9	228.3	71.1	41.2
September	13.2	4.0	83.9	69.7	107.0	87.0	81.1	71.3		
October	61.8	52.6	14.0	9.0	92.9	81.3	-	-		
November	59.9	42.4	32.0	26.5	71.5	61.9	163.8	124.7		
December	103.2	95.2	159.2	95.9	124.7	117.2	86.8	69.0		
January	15.4	6.5	82.5	67.1	69.6	60.2	74.7	52.3		
February	60.8	56.6	80.5	64.7	23.9	11.7	95.4	70.9		
March	83.7	60.8	44.5	41.1	50.2	42.1	113.2	77.7		
April	90.9	49.6	-	-	119.0	88.8	160.2	129.9		
May	73.1	49.2	6.6	4.0	27.0	11.4	126.4	80.6		
June	95.5	64.9	235.4	153.8	161.8	135.3	290.6	200.4		
Average										
per month	66.5	50.9	73.4	53.6	94.9	78.0	138.1	103.9	289.5	204.5
per day	2.2	1.7	2.5	1.8	3.2	2.6	4.6	3.5	9.7	6.8

PURCHASE

PERIOD	2004-05		2005-06		2006-07		2007-08		2008-09	
	Amount		Amount		Amount		Amount		Amount	
	Offered	Injected	Offered	Injected	Offered	Injected	Offered	Injected	Offered	Injected
July	-	-	-	-	-	-	-	-	-	-
August	-	-	11.2	8.3	27.2	21.2	-	-	117.00	78.2
September	-	-	-	-	-	-	-	-	-	-
October	16.1	14.0	66.9	38.5	-	-	40.9	40.9		
November	-	-	123.6	74.1	-	-	-	-		
December	-	-	-	-	31.3	25.8	-	-		
January	40.3	21.3	139.6	111.5	-	-	41.6	27.5		
February	-	-	60.6	42.8	-	-	-	-		
March	-	-	12.7	10.7	51.1	25.0	102.7	82.1		
April	-	-	210.5	96.9	-	-	50.1	40.1		
May	20.0	9.0	91.4	46.7	-	-	63.6	41.8		
June	-	-	-	-	-	-	-	-		
Average										
per month	6.4	3.7	59.7	35.8	9.1	6.0	24.9	19.4	58.5	39.1
per day	0.2	0.1	2.0	1.2	0.3	0.2	0.8	0.7	2.0	1.3

Source: Domestic Markets & Monetary Management Department, SBP

6.3 SBP 3-Day Repo Facility MTBs / FIBs / PIBs (Outstanding)

Cash Accommodation

(Million Rupees)

PERIOD	2003-04	2004-05	2005-06	2006-07	2007-08	2008-09
July	-	700	23,861	38,883	111,817	24,227
August	-	10,600	48,241	19,032	68,490	42,861
September	-	84,760	45,245	66,715	121,825	
October	10,440	63,324	116,512	27,670	575,455	
November	400	14,098	91,780	77,702	126,045	
December	-	-	4,520	35,573	427,940	
January	1,350	115,134	29,760	7,718	129,107	
February	8,340	-	12,032	34,435	80,755	
March	-	21,695	47,815	75,895	89,772	
April	24,745	800	243,238	51,327	51,609	
May	1,245	70,787	55,246	174,980	93,458	
June	-	139,550	44,019	76,830	96,792	
Average						
per month	3,877	43,454	63,522	57,230	164,422	33,544
per day	129	1,448	2,117	1,908	5,481	1,118

SBP 3-Day Repo Rates

(Percent per annum)

PERIOD	2003-04	2004-05	2005-06	2006-07	2007-08	2008-09
July	7.50	7.50	9.00	9.50	9.50	13.00
August	7.50	7.50	9.00	9.50	10.00	13.00
September	7.50	7.50	9.00	9.50	10.00	
October	7.50	7.50	9.00	9.50	10.00	
November	7.50	7.50	9.00	9.50	10.00	
December	7.50	7.50	9.00	9.50	10.00	
January	7.50	7.50	9.00	9.50	10.00	
February	7.50	7.50	9.00	9.50	10.50	
March	7.50	7.50	9.00	9.50	10.50	
April	7.50	9.00	9.00	9.50	10.50	
May	7.50	9.00	9.00	9.50	12.00	
June	7.50	9.00	9.00	9.50	12.00	

Note: Rates applicable against T-bills & FIBs, PIBs

Source: Domestic Markets & Monetary Management Department, SBP

6.4 Auction of Government of Pakistan Market Treasury Bills (Auction Wise)

(Million Rupees)

AUCTION SETTLEMENT DATE	3 Months Treasury Bills				6 Months Treasury Bills	
	Amount Offered	Amount Accepted	Cutt-off Yield (%)	Weighted Average (%)	Amount Offered	Amount Accepted
2007-08						
02-08-07	-	-	-	-	522	522
16-08-07	8,000	6,000	9.0942	9.0489	2,000	2,000
30-08-07	-	-	-	-	-	-
13-09-07	-	-	-	-	-	-
27-09-07	-	-	-	-	-	-
11-10-07	-	-	-	-	-	-
25-10-07	-	-	-	-	5,500	5,000
08-11-07	-	-	-	-	5,000	5,000
22-11-07	100	Rejected	Rejected	Rejected	100	100
06-12-07	8,000	7,000	9.1395	9.1071	13,823	13,823
24-12-07	1,000	1,000	9.1213	9.1213	4,600	4,300
03-01-08	10,000	10,000	9.0942	9.0942	100	100
17-01-08	-	-	-	-	300	300
31-01-08	-	-	-	-	100	Rejected
14-02-08	15,700	15,200	9.4568	9.3825	10,300	9,800
28-02-08	3,525	3,525	9.4568	9.4568	8,600	6,600
13-03-08	500	500	9.5475	9.5475	12,180	8,150
27-03-08	800	Rejected	Rejected	Rejected	500	Rejected
10-04-08	12,900	10,100	9.5925	9.5610	15,640	12,240
24-04-08	2,850	Rejected	Rejected	Rejected	1,009	105
08-05-08	11,500	11,500	9.7746	9.6679	3,604	3,604
22-05-08	4,104	2,504	9.9741	9.9506	-	-
05-06-08	54,954	54,954	11.2331	10.9769	4,300	3,300
19-06-08	15,901	12,376	11.4161	11.3163	330	330
2008-09						
03-07-08	79,328	76,828	11.5534	11.4512	-	-
17-07-08	50,504	50,504	11.7825	11.6528	-	-
31-07-08	92,270	41,070	12.1954	12.1688	-	-
15-08-08	40,350	37,000	12.2959	12.2205	-	-
28-08-08	35,702	35,702	12.5631	12.3874	-	-

6.4 Auction of Government of Pakistan Market Treasury Bills (Auction Wise)

(Million Rupees)

AUCTION SETTLEMENT DATE	6 Months Treasury Bills		12 Months Treasury Bills			
	Cutt-off Yield (%)	Weighted Average (%)	Amount Offered	Amount Accepted	Cutt-off Yield (%)	Weighted Average (%)
2007-08						
02-08-07	9.0987	9.0987	34,200	10,000	9.3990	9.3727
16-08-07	9.1426	9.1426	45,850	25,100	9.4092	9.3975
30-08-07	-	-	25,700	6,000	9.3990	9.3990
13-09-07	-	-	31,070	25,220	9.3990	9.3990
27-09-07	-	-	24,700	21,200	9.3990	9.3990
11-10-07	-	-	18,030	16,930	9.3990	9.3990
25-10-07	9.1426	9.1426	9,164	5,014	9.3990	9.3893
08-11-07	9.1426	9.1426	50,020	30,020	9.3990	9.3932
22-11-07	9.2084	9.2084	17,428	12,428	9.3990	9.3961
06-12-07	9.2523	9.2229	29,940	27,440	9.4470	9.4058
24-12-07	9.2584	9.2584	2,770	1,619	9.4429	9.4429
03-01-08	9.2523	9.2523	16,000	15,000	9.4451	9.4371
17-01-08	9.2962	9.2962	10,400	7,400	9.4951	9.4493
31-01-08	No. Bid	No. Bid	5,425	Rejected	Rejected	Rejected
14-02-08	9.7269	9.6141	24,400	23,450	9.9779	9.8692
28-02-08	9.8024	9.7359	32,250	28,250	10.0385	9.9908
13-03-08	9.8686	9.8223	23,565	21,965	10.1357	10.1235
27-03-08	Rejected	Rejected	21,070	10	10.1235	10.1235
10-04-08	9.8686	9.8686	33,108	17,758	10.1357	10.1251
24-04-08	9.8686	9.8686	16,003	459	10.1357	10.1357
08-05-08	9.9570	9.8931	19,344	16,344	10.2452	10.1715
22-05-08	-	-	6,667	1,167	10.3427	10.3246
05-06-08	11.2464	11.1894	10,500	7,500	11.4893	11.3931
19-06-08	11.4927	11.4723	3,154	3,154	11.7390	11.6881
2008-09						
03-07-08	-	-	8,423	2,223	11.7891	11.7841
17-07-08	-	-	5,833	3,833	11.8392	11.8294
31-07-08	-	-	5,300	Rejected	Rejected	Rejected
15-08-08	-	-	57.70	Rejected	Rejected	Rejected
28-08-08	-	-	No Bid	-	-	-

Source: Domestic Markets & Monetary Management Department, SBP

6.5 Auction of Pakistan Investment Bonds (PIBs)

(Million Rupees)

AUCTION SETTLEMENT DATE	Tenure	Coupon Rate (%)	Amount Offered	Amount Accepted	Price Accepted = Rs.100	Cut-off Yield Accepted (%)	Weighted Average Yield Accepted (%)
2007-08							
31-01-08	3-Years	9.10	366.00	216.00	97.89	10.0499	10.0499
	5-Years	9.30	1,084.90	726.40	96.60	10.2486	10.2346
	10-Years	9.60	5,512.50	4,162.50	92.66	10.8503	10.7763
	15-Years	10.00	2,512.00	1,762.00	88.20	11.7452	11.6115
	20-Years	10.50	3,000.00	2,600.00	89.21	11.9493	11.8355
	30-Years	11.00	4,800.00	2,600.00	91.11	12.1105	12.0500
31-03-08	3-Years	9.10	735.00	285.00	97.87	10.6044	10.6044
	5-Years	9.30	1,147.70	197.70	94.84	10.7995	10.7995
	10-Years	9.60	6,160.20	610.20	89.50	11.4494	11.4339
	15-Years	10.00	1,150.70	470.70	86.80	11.9893	11.8681
	20-Years	10.50	1,000.00	950.00	88.05	12.1296	11.9983
	30-Years	11.00	3,000.00	2,800.00	88.37	12.4938	12.2392
30-06-08	3-Years	9.10	216.50	216.50	94.10	12.2964	12.2964
	5-Years	9.30	100.00	Rejected	-	-	-
	10-Years	9.60	2,787.70	837.70	80.18	13.4201	13.4112
	15-Years	10.00	1,262.50	812.50	78.02	13.6104	13.4405
	20-Years	10.50	2,200.00	1,200.00	77.37	13.9399	13.8548
	30-Years	11.00	2,200.00	1,700.00	77.64	14.2496	14.1182
2008-09							
30-08-08	3-Years	11.25	375.00	187.50	94.14	13.6973	13.6973
	5-Years	11.50	450.00	Rejected	-	-	-
	7-Years	11.75	325.00	200.00	88.79	14.3398	14.3278
	10-Years	12.00	2,490.00	688.30	86.78	14.5493	14.4724
	15-Years	12.50	50.00	56.00	86.55	14.7500	14.7500
	20-Years	13.00	-	-	-	-	-
	30-Years	13.75	2,500.00	2,500.00	92.15	14.9384	14.6078

Source: Domestic Markets & Monetary Management Department, SBP

6.6 Monthly KIBOR

(Percent per annum)

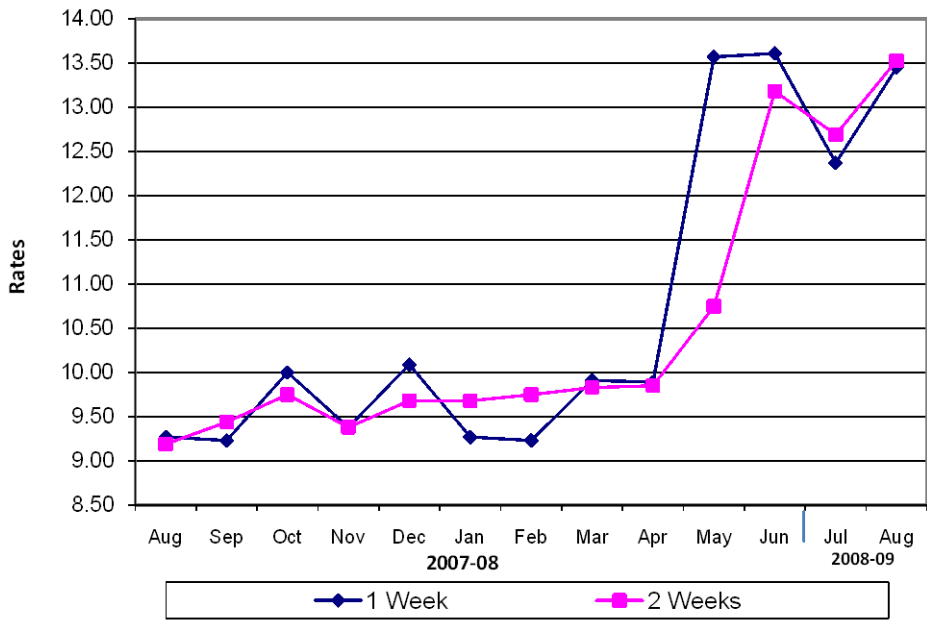
Period			1 Week		2 Week		1Month		3 Month		6 Month		9 Month		12 Month	
			Bid	Offer	Bid	Offer	Bid	Offer	Bid	Offer	Bid	Offer	Bid	Offer	Bid	Offer
2007	Aug.	Month Average	8.76	9.76	8.94	9.44	9.05	9.55	9.32	9.82	9.63	10.13	9.83	10.33	10.03	10.53
		End-Month	8.77	9.77	8.92	9.42	9.04	9.54	9.29	9.79	9.59	10.09	9.82	10.32	10.03	10.53
	Sep.	Month Average	8.84	9.84	8.99	9.49	9.05	9.55	9.23	9.73	9.51	10.01	9.77	10.27	9.99	10.49
		End-Month	8.88	9.88	9.02	9.52	9.08	9.58	9.21	9.71	9.47	9.97	9.73	10.23	9.97	10.47
	Oct.	Month Average	9.26	10.26	9.35	9.85	9.29	9.79	9.30	9.80	9.50	10.00	9.73	10.23	9.96	10.46
		End-Month	9.21	10.21	9.31	9.81	9.29	9.79	9.30	9.80	9.48	9.98	9.72	10.22	9.95	10.45
	Nov.	Month Average	8.84	9.84	9.05	9.55	9.14	9.64	9.27	9.77	9.47	9.97	9.70	10.20	9.91	10.41
		End-Month	8.38	9.38	8.80	9.30	9.02	9.52	9.23	9.73	9.45	9.95	9.69	10.19	9.90	10.40
	Dec.	Month Average	9.16	10.16	9.31	9.81	9.32	9.82	9.31	9.81	9.47	9.97	9.70	10.20	9.93	10.43
		End-Month	9.78	10.78	9.72	10.22	9.54	10.04	9.42	9.92	9.50	10.00	9.70	10.20	9.93	10.43
2008	Jan.	Month Average	9.06	10.06	9.25	9.75	9.33	9.83	9.40	9.90	9.53	10.03	9.72	10.22	9.95	10.45
		End-Month	8.03	9.03	8.69	9.19	9.12	9.62	9.39	9.89	9.56	10.06	9.75	10.25	9.99	10.49
	Feb.	Month Average	9.02	10.02	9.30	9.80	9.39	9.89	9.58	10.08	9.78	10.28	9.99	10.49	10.21	10.71
		End-Month	9.33	10.33	9.43	9.93	9.47	9.97	9.60	10.10	9.77	10.27	9.97	10.47	10.21	10.71
	Mar.	Month Average	9.26	10.26	9.44	9.94	9.51	10.01	9.64	10.14	9.82	10.32	9.98	10.48	10.20	10.70
		End-Month	8.90	9.90	9.23	9.73	9.42	9.92	9.64	10.14	9.82	10.32	9.98	10.48	10.22	10.72
	Apr.	Month Average	9.18	10.18	9.41	9.91	9.52	10.02	9.72	10.22	9.87	10.37	10.00	10.50	10.22	10.72
		End-Month	8.70	9.70	9.16	9.66	9.48	9.98	9.76	10.26	9.90	10.40	9.99	10.49	10.20	10.70
	May.	Month Average	10.38	11.38	10.57	11.07	10.71	11.21	10.93	11.43	11.08	11.58	11.21	11.71	11.35	11.85
		End-Month	10.95	11.95	11.26	11.76	11.91	12.41	12.32	12.82	12.57	13.07	12.80	13.30	13.00	13.50
	Jun.	Month Average	11.51	12.51	11.96	12.46	12.27	12.77	12.58	13.08	12.82	13.32	13.01	13.51	13.19	13.69
		End-Month	12.22	13.22	12.79	13.29	13.14	13.64	13.38	13.88	13.69	14.19	13.86	14.36	13.97	14.47
	Jul.	Month Average	10.77	11.77	11.41	11.91	12.32	12.82	13.34	13.84	13.61	14.11	13.81	14.31	13.97	14.47
		End-Month	10.77	11.77	11.36	11.86	12.12	12.62	12.70	13.20	12.98	13.48	13.27	13.77	13.51	14.01
	Aug.	Month Average	11.65	12.65	12.07	12.57	12.46	12.96	12.84	13.34	13.07	13.57	13.30	13.80	13.53	14.03
		End-Month	11.43	12.43	11.98	12.48	12.60	13.10	13.10	13.60	13.26	13.76	13.44	13.94	13.65	14.15

KIBOR :Karachi Interbank Offered Rate

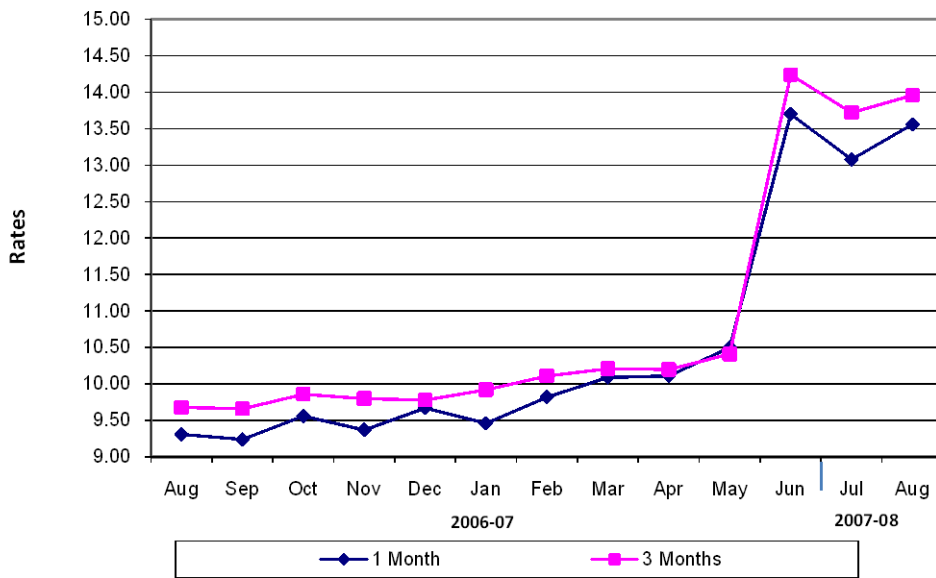
Source: Domestic Markets & Monetary Management Department, SBP

Inter- Bank Average Call Rates

Weekly



Monthly



6.7 Indicative Inter-Bank Average Call Rates

(% Per Annum)

Period	Overnight	1 Week	2 Week	1 Month	3 Month	6 Month	1 Year
2007 Aug.	8.60	9.27	9.19	9.31	9.68	-	-
Sep.	9.25	9.23	9.44	9.24	9.66	10.00	-
Oct.	9.83	10.00	9.75	9.56	9.86	10.02	-
Nov.	8.85	9.38	9.38	9.37	9.80	10.10	-
Dec.	9.56	10.09	9.68	9.67	9.78	-	-
2008 Jan.	8.73	9.27	9.68	9.46	9.92	10.80	-
Feb.	9.12	9.23	9.75	9.82	10.11	10.16	-
Mar.	9.45	9.91	9.83	10.09	10.21	10.55	-
Apr.	9.99	9.89	9.85	10.11	10.20	10.12	-
May	11.93	13.57	10.75	10.50	10.41	10.62	-
Jun.	13.55	13.61	13.18	13.70	14.24	13.75	-
Jul.	11.61	12.37	12.69	13.08	13.72	-	-
Aug.	12.93	13.45	13.53	13.56	13.96	-	-

Source: Domestic Markets & Monetary Management Department, SBP

6.8 SBP Rates for Market to Market (M2M) of Major Currencies

MONTH	US Dollar			Euro			Japanese Yen			Pound Sterling		
	Ready	1Week	1 Month	Ready	1Week	1 Month	Ready	1Week	1 Month	Ready	1Week	1 Month
01-Aug-08	71.5480	71.6735	72.0790	111.3824	111.5356	112.0256	0.6653	0.6667	0.6714	141.4468	141.6211	142.1671
02-Aug-08	71.8130	71.9310	72.3290	111.6979	111.8401	112.3196	0.6669	0.6682	0.6729	141.8199	141.9781	142.5086
04-Aug-08	71.9360	72.0680	72.4690	112.0979	112.2609	112.7348	0.6662	0.6676	0.6723	141.6312	141.8161	142.3280
05-Aug-08	72.2870	72.4110	72.8270	111.9798	112.1309	112.6324	0.6695	0.6709	0.6758	141.4223	141.5903	142.1440
06-Aug-08	72.5200	72.6370	73.0520	112.2247	112.3632	112.8675	0.6687	0.6700	0.6748	141.6352	141.7896	142.3481
07-Aug-08	72.5210	72.6505	73.0530	112.2408	112.3983	112.8840	0.6627	0.6641	0.6687	141.4740	141.6526	142.1876
08-Aug-08	72.5760	72.7210	73.1490	110.0361	110.2133	110.7249	0.6627	0.6643	0.6691	139.8431	140.0484	140.6261
09-Aug-08	72.7680	72.9080	73.3340	109.3339	109.5011	110.0047	0.6606	0.6621	0.6669	139.8710	140.0657	140.6357
11-Aug-08	73.3710	73.5250	73.9680	110.6105	110.7997	111.3182	0.6687	0.6703	0.6754	141.2502	141.4717	142.0515
12-Aug-08	73.7420	73.8840	74.3190	109.9530	110.1226	110.6276	0.6696	0.6711	0.6761	140.2020	140.3981	140.9617
13-Aug-08	75.0220	75.1570	75.6010	111.8390	111.9975	112.5183	0.6886	0.6901	0.6952	142.3392	142.5207	143.1066
15-Aug-08	76.4200	76.5690	77.0080	112.4482	112.6237	113.1254	0.6911	0.6927	0.6977	141.5833	141.7837	142.3408
16-Aug-08	76.6360	76.7810	77.2290	112.5323	112.7014	113.2154	0.6937	0.6953	0.7003	142.8802	143.0736	143.6521
18-Aug-08	75.6000	75.7490	76.2170	111.3777	111.5540	112.0899	0.6859	0.6875	0.6928	141.1074	141.3107	141.9122
19-Aug-08	74.5050	74.6438	75.1010	109.3063	109.4673	109.9940	0.6777	0.6793	0.6844	138.5234	138.7075	139.3026
20-Aug-08	74.8280	74.9690	75.4390	110.4349	110.6000	111.1527	0.6793	0.6808	0.6860	139.2699	139.4581	140.0880
21-Aug-08	76.3910	76.5355	77.0100	112.8677	113.0349	113.5952	0.7025	0.7042	0.7094	142.4539	142.6519	143.2841
22-Aug-08	76.5350	76.6795	77.1590	113.7042	113.8775	114.4429	0.7011	0.7027	0.7080	142.9406	143.1394	143.7610
23-Aug-08	75.9820	76.1305	76.6060	112.2862	112.4651	113.0233	0.6902	0.6918	0.6971	140.6921	140.8968	141.5056
25-Aug-08	76.6500	76.8270	77.2710	112.9974	113.2190	113.7166	0.6970	0.6989	0.7040	141.5764	141.8334	142.3792
26-Aug-08	76.5500	76.6910	77.1230	111.8051	111.9719	112.4544	0.6977	0.6992	0.7041	140.5382	140.7272	141.2600
27-Aug-08	76.1250	76.2405	76.6230	112.0712	112.2022	112.6189	0.6996	0.7009	0.7054	140.5191	140.6630	141.1099
28-Aug-08	75.9520	76.0215	76.4100	112.2836	112.3446	112.7854	0.6963	0.6972	0.7016	139.6112	139.6678	140.1478
29-Aug-08	76.1950	76.2120	76.5490	112.2124	112.1939	112.5561	0.7003	0.7007	0.7046	139.4216	139.3786	139.7624
30-Aug-08	76.4840	76.5190	76.8540	112.2173	112.2250	112.5832	0.7028	0.7034	0.7073	139.4227	139.4123	139.7920

6.8 SBP Rates for Market to Market (M2M) of Major Currencies

MONTH	Swiss Frank			Australian Dollar			Saudi Arabian Riyal			Kuwaiti Dinnar		
	Ready	1Week	1 Month	Ready	1Week	1 Month	Ready	1Week	1 Month	Ready	1Week	1 Month
01-Aug-08	68.2840	68.4084	68.8115	66.9582	67.0115	67.1636	19.0782	19.1127	19.2211	268.9674	269.4442	270.9941
02-Aug-08	68.3901	68.5069	68.9014	66.7251	66.7714	66.9167	19.1489	19.1815	19.2893	270.1768	270.6360	272.2001
04-Aug-08	68.6281	68.7583	69.1581	67.0264	67.0846	67.2321	19.1817	19.2176	19.3251	270.6294	271.1311	272.6654
05-Aug-08	68.6356	68.7569	69.1700	66.4318	66.4784	66.6410	19.2752	19.3096	19.4218	271.6944	272.1144	273.6725
06-Aug-08	68.8928	69.0082	69.4193	66.3377	66.3790	66.5477	19.3374	19.3696	19.4831	272.4371	272.8406	274.3325
07-Aug-08	68.7240	68.8511	69.2511	66.1065	66.1614	66.3213	19.3376	19.3732	19.4808	272.2669	272.7070	273.9042
08-Aug-08	67.6510	67.7905	68.2074	64.7922	64.8591	65.0403	19.3518	19.3910	19.5048	271.6372	272.1442	273.3724
09-Aug-08	67.3279	67.4621	67.8737	64.6689	64.7313	64.9087	19.4030	19.4414	19.5568	271.8978	272.3751	273.6548
11-Aug-08	68.2584	68.4066	68.8372	65.5386	65.6144	65.7901	19.5638	19.6059	19.7256	274.8699	275.4106	276.6917
12-Aug-08	67.7527	67.8878	68.3057	64.5648	64.6288	64.8012	19.6627	19.7016	19.8193	275.6093	276.1038	277.0926
13-Aug-08	68.9541	69.0826	69.5073	65.1154	65.1724	65.3556	20.0040	20.0416	20.1621	280.4562	280.9135	281.8829
15-Aug-08	69.4380	69.5766	69.9739	65.8320	65.8987	66.0727	20.3773	20.4187	20.5352	283.9627	284.4686	285.4051
16-Aug-08	69.8915	70.0269	70.4492	66.3821	66.4483	66.6302	20.4344	20.4747	20.5963	284.9135	285.4047	286.3727
18-Aug-08	69.0159	69.1551	69.5976	65.8476	65.9168	66.1032	20.1587	20.2000	20.3264	281.9638	282.4716	283.5243
19-Aug-08	67.8212	67.9513	68.3822	64.4804	64.5408	64.7311	19.8661	19.9047	20.0277	278.3572	278.8390	279.9038
20-Aug-08	68.3049	68.4375	68.8818	65.2276	65.2894	65.4989	19.9528	19.9915	20.1176	279.6998	280.1794	280.8286
21-Aug-08	69.7922	69.9300	70.3783	66.4105	66.4653	66.6830	20.3696	20.4092	20.5368	285.3822	285.6548	286.4636
22-Aug-08	70.2188	70.3572	70.8118	67.0523	67.1191	67.3301	20.4074	20.4470	20.5733	286.0377	286.3098	287.1353
23-Aug-08	69.1500	69.2906	69.7382	65.7282	65.7969	66.0042	20.2586	20.2988	20.4272	283.4942	283.7831	284.6008
25-Aug-08	69.7421	69.9085	70.3298	66.2754	66.3694	66.5361	20.4386	20.4869	20.5924	286.4674	286.8606	287.5521
26-Aug-08	69.1790	69.3118	69.7184	65.3163	65.3795	65.5482	20.4114	20.4479	20.5533	285.4004	285.6595	286.7879
27-Aug-08	69.5364	69.6483	70.0133	65.5322	65.5747	65.7036	20.2986	20.3300	20.4249	285.0379	285.3099	286.3127
28-Aug-08	69.6169	69.6863	70.0582	65.8732	65.8761	66.0289	20.2506	20.2697	20.3646	284.1879	284.2882	285.5808
29-Aug-08	69.4355	69.4567	69.7815	65.8287	65.7857	65.8909	20.3168	20.3224	20.4052	284.9053	284.8195	285.9614
30-Aug-08	69.4425	69.4795	69.8009	65.6424	65.6144	65.7175	20.3941	20.3996	20.4846	285.7829	285.7639	286.8971

Source: Domestic Markets & Monetary Management Department, SBP

6.9 Secondary Market Transactions in Government Securities

(Billion Rupees)

Security/Transactions	2007							2008						
	Jul.	Aug.	Sep.	Oct.	Nov.	Dec.	Jan.	Feb.	Mar.	Apr.	May.	Jun.	Jul.	
PIBs														
Purchases	80.7	71.7	49.2	73.4	42.2	53.0	54.0	50.7	75.9	100.4	84.3	91.6	71.8	
Non Banks	Repo	3.0	6.7	5.5	5.3	2.2	1.4	5.5	4.5	5.8	6.9	8.1	4.9	3.1
	Outright	2.7	11.1	0.8	8.6	4.3	2.1	7.0	3.6	7.3	5.9	4.2	4.6	1.1
Banks	Repo	66.4	43.6	35.9	42.0	24.1	21.1	25.7	28.5	49.7	75.0	57.7	65.3	58.0
	Outright	5.4	6.8	7.1	12.9	10.3	22.9	15.3	11.3	10.6	10.6	6.5	6.1	8.1
SBP	Repo	3.2	3.5	-	4.6	1.3	5.5	0.5	2.8	2.4	2.0	7.8	10.8	1.5
	Outright	-	-	-	-	-	-	-	-	-	-	-	-	-
Sales	80.7	71.7	49.2	73.4	42.2	53.0	54.0	50.7	75.9	100.4	84.3	91.6	71.8	
Non Banks	Repo	17.5	10.5	8.3	7.4	3.9	3.1	5.4	4.7	10.0	13.0	9.4	8.9	7.5
	Outright	0.9	0.4	0.2	2.7	2.3	-	2.4	0.7	0.2	0.7	0.6	0.2	0.7
Banks	Repo	55.2	43.3	33.1	44.5	23.7	24.9	26.3	31.1	47.9	70.9	64.3	72.1	55.1
	Outright	7.2	17.6	7.7	18.8	12.3	25.0	19.9	14.2	17.8	15.8	10.1	10.5	8.5
SBP	Repo	-	-	-	-	-	-	-	-	-	-	-	-	-
	Outright	-	-	-	-	-	-	-	-	-	-	-	-	-
Net Position	-	-	-	-	-	-	-	-	-	-	-	-	-	
Treasury Bills														
Purchases	975.1	889.0	896.5	1,183.4	996.2	1,003.9	1,115.5	899.9	847.1	980.0	1,007.4	1,236.5	1,226.5	
Non Banks	Repo	25.7	31.0	65.7	32.7	51.8	22.4	54.6	57.7	42.4	38.1	40.4	39.6	4.8
	Outright	15.7	2.8	11.3	14.4	13.4	7.2	3.8	6.1	7.2	13.1	12.6	9.9	4.1
Banks	Repo	834.5	788.0	668.7	721.8	783.4	735.2	891.9	694.9	608.9	800.4	814.2	1,046.8	1,128.9
	Outright	61.0	16.3	32.0	17.9	29.8	23.9	9.1	63.2	33.1	42.1	14.5	55.8	66.1
SBP		38.1	51.0	118.8	396.6	117.7	215.2	156.2	78.0	155.4	86.3	125.7	84.4	22.7
Sales	975.1	889.0	896.5	1,184	996.2	1,003.9	1,115.5	899.9	847.1	980.0	1,007.4	1,236.5	1,226.5	
Non Banks	Repo	19.8	11.0	17.2	18.7	10.5	4.7	8.2	7.8	19.1	21.4	21.9	33.0	66.2
	Outright	3.2	1.3	0.7	4.0	7.2	4.6	0.8	3.0	3.3	5.4	2.1	0.0	-
Banks	Repo	736.8	630.6	764.7	1,134	817.8	899.2	1,042.1	752.0	710.0	773.5	877.8	937.4	722.3
	Outright	73.5	17.7	42.6	28.3	36.0	26.5	12.1	66.4	37.1	49.8	25.0	65.7	70.2
SBP		141.8	228.3	71.3	-	124.7	69.0	52.3	70.9	77.7	129.9	80.6	200.4	367.9
Net Position	-	-	-	-	-	-	-	-	-	-	-	-	-	

Source: Domestic Markets & Monetary Management Department, SBP