

2.1 Pakistan Monetary Survey

(Depository Corporation Survey)

(Million Rupees)

Description	2006		2007		2007			
	Jun.	Dec.	Jun.	Dec.	Jul.	Aug.	Sep.	Oct.
Net Foreign Assets	786,458	775,042	1,063,417	951,836	1,049,940	1,032,279	1,056,074	1,060,874
Claims on non-residents	1,039,013	1,029,203	1,317,429	1,225,442	1,302,860	1,284,544	1,310,862	1,315,746
<i>Less: Liabilities to non-residents</i>	252,555	254,161	254,012	273,606	252,920	252,265	254,788	254,872
Domestic Credit	3,010,923	3,300,164	3,517,670	4,012,716	3,502,991	3,570,461	3,560,561	3,621,748
Net claims on General government ¹	802,948	826,385	898,319	1,100,352	935,608	995,225	960,474	960,130
Net claims on Central government	918,571	961,155	1,062,740	1,256,864	1,112,998	1,175,219	1,150,410	1,137,354
Claims on Central Govt.	1,176,896	1,202,688	1,368,149	1,573,468	1,379,508	1,448,799	1,425,285	1,428,244
<i>Less: Liabilities to Central Govt.</i>	258,325	241,533	305,409	316,604	266,510	273,580	274,875	290,890
Net claims on Provincial governments ²	(115,623)	(134,770)	(164,421)	(156,512)	(177,390)	(179,994)	(189,936)	(177,224)
Claims on Provincial Govts.	69,790	41,880	51,711	39,690	51,175	49,085	48,820	43,701
<i>Less: Liabilities to Provincial Govts.</i>	185,413	176,650	216,132	196,202	228,565	229,079	238,756	220,925
Claims on Private sectors	1,957,418	2,198,651	2,294,800	2,562,819	2,254,310	2,272,801	2,292,848	2,336,761
Claims on NFPSEs	136,209	136,126	164,140	176,606	156,659	154,904	163,092	159,620
Claims on NBFIs Depository & Non	114,348	139,002	160,411	172,939	156,414	147,531	144,147	165,237
Broad Money (M2)	3,407,794	3,665,543	4,052,986	4,387,940	3,990,529	4,061,982	4,115,021	4,127,079
Narrow Money (M1)	2,720,685	2,854,792	3,155,635	3,403,647	3,098,523	3,141,404	3,169,022	3,194,759
Currency outside Depository Corporations (Banks)	741,349	874,597	840,418	1,008,186	836,830	839,877	875,348	908,288
Transferable/Demand deposits	1,979,336	1,980,195	2,315,217	2,395,461	2,261,693	2,301,527	2,293,674	2,286,471
Time Deposit	687,109	810,751	897,351	984,293	892,006	920,578	945,999	932,320
Public sector funds/deposits (SBP)	23,225	23,419	23,478	23,504	23,478	23,478	23,478	23,478
Counterpart funds	546	512	519	531	519	521	521	521
Long –Term Foreign Liabilities	84	65	56	39	50	50	50	49
Other items (Net) ³	365,737	385,672	504,049	552,533	538,353	516,710	477,566	531,499
Other liabilities	887,273	1,020,479	1,219,889	1,226,455	1,194,910	1,104,922	1,095,736	1,141,689
<i>less: Other assets</i>	521,536	634,807	715,840	673,922	656,557	588,212	618,170	610,190
Memorandum items:								
Bank Clearings	1,854,688	1,888,611	2,286,183	1,598,221	2,026,532	1,729,731	1,581,359	1,503,547
Post Office Savings	61,418	52,977	67,054	61,518	64,711	64,712	64,816	64,320

Note: Pakistan Monetary Survey is the analytical accounts of State Bank of Pakistan and Scheduled banks based on monthly reporting closely in the line with MFSM. Data relates to last working day of the month.

2.1 Pakistan Monetary Survey (Depository Corporation Survey)

(Million Rupees)

Description	2007		2008					
	Nov.	Dec.	Jan.	Feb.	Mar.	Apr.	May.	Jun.
Net Foreign Assets	983,638	951,836	921,569	886,033	841,871	781,025	735,199	798,759
Claims on non-residents	1,245,568	1,225,442	1,184,680	1,148,896	1,114,011	1,055,731	813,329	912,771
<i>Less: Liabilities to non-residents</i>	261,930	273,606	263,111	262,863	272,140	274,706	78,130	114,012
Domestic Credit	3,821,106	4,012,716	4,021,338	4,137,011	4,224,425	4,331,532	4,394,079	4,531,797
Net claims on General government ¹	1,050,574	1,100,352	1,110,957	1,169,438	1,203,358	1,258,001	1,330,484	1,478,720
Net claims on Central Govt.	1,228,232	1,256,864	1,315,863	1,382,108	1,432,935	1,481,885	1,532,066	1,646,898
Claims on Central Govt.	1,520,160	1,573,468	1,622,614	1,676,073	1,734,361	1,778,672	1,816,376	1,904,410
<i>Less: Liabilities to Central Govt.</i>	291,928	316,604	306,751	293,965	301,426	296,787	284,310	257,512
Net claims on Provincial governments ²	(177,658)	(156,512)	(204,906)	(212,670)	(229,577)	(223,884)	(201,582)	(168,178)
Claims on Provincial Govts.	41,596	39,690	31,764	25,922	23,270	27,767	61,516	64,210
<i>Less: Liabilities to Provincial Govts.</i>	219,254	196,202	236,670	238,592	252,847	251,651	263,098	232,388
Claims on Private sectors	2,425,920	2,562,819	2,582,993	2,615,140	2,662,846	2,706,705	2,685,960	2,720,010
Claims on NFPSEs	170,432	176,606	171,470	196,720	195,580	209,783	228,266	182,223
Claims on NBFIs Depository & Non Depository	174,180	172,939	155,918	155,713	162,641	157,043	149,369	150,844
Broad Money (M2)	4,220,242	4,387,940	4,304,169	4,357,125	4,398,125	4,397,120	4,470,905	4,671,231
Narrow Money (M1)	3,275,890	3,403,647	3,326,310	3,355,131	3,365,665	3,363,478	3,414,007	3,553,370
Currency outside Depository Corporations (Banks)	939,300	1,008,186	979,019	988,874	982,106	986,204	998,151	982,175
Transferable/Demand deposits	2,336,590	2,395,461	2,347,291	2,366,257	2,383,559	2,377,274	2,415,856	2,571,195
Time Deposit	944,352	984,293	977,859	1,001,994	1,032,460	1,033,642	1,056,898	1,117,861
Public sector funds/deposits (SBP)	23,486	23,504	23,504	23,504	23,504	23,504	23,597	23,597
Counterpart funds	523	531	531	533	533	533	535	543
Long –Term Foreign Liabilities	48	39	39	39	35	3,172	3,364	3,430
Other items (Net) ³	560,446	552,533	614,664	641,839	644,102	688,230	630,879	631,755
Other liabilities	1,163,549	1,226,455	1,217,264	1,283,148	1,307,346	1,304,765	1,328,345	1,441,892
<i>less: Other assets</i>	603,103	673,922	602,600	641,309	663,244	616,535	697,466	810,137
Memorandum items:								
Bank Clearings	1,622,994	1,598,221	1,659,650	1,487,362	1,828,075	1,816,075	2,043,153	2,064,025
Post Office Savings	61,605	61,518	63,002	65,178	66,509	69,902	70,721	71,068

1. General Government includes Central Government and Provincial Governments

2. Provincial Governments include Provincial Governments and Local /city Governments

3. *Other Liabilities* include Liabilities to scheduled banks, paid up capital and reserve accounts, *Other liabilities* from SBP and liabilities to SBP from scheduled banks. *Other assets* include claims on banks, other assets from SBP and claims on SBP from scheduled banks.

2.2 Analytical Accounts of State Bank of Pakistan

(Central Bank Survey)

(Million Rupees)

Description	2006		2007		2007			
	Jun.	Dec.	Jun.	Dec.	Jul.	Aug.	Sep.	Oct.
Net Foreign Assets	639,843	642,680	867,581	830,367	861,596	864,727	878,471	905,864
Claims on non-residents (Foreign Assets)	864,062	865,562	1,089,835	1,057,987	1,084,787	1,088,496	1,105,845	1,132,630
a) Monetary Gold Coin and Bullion	77,558	77,558	82,598	108,087	84,433	85,737	94,754	100,791
b) Holding of SDRs	13,124	13,122	12,802	13,149	12,904	12,891	13,126	13,237
c) Foreign Currency	3,126	2,792	3,510	3,563	3,441	3,964	3,018	4,053
d) Securities other than shares (Foreign)	555,312	549,365	685,469	681,894	648,610	698,437	690,290	748,550
e) Deposits	121,824	128,434	152,719	148,784	187,611	172,472	183,924	147,938
f) Loans	-	-	-	-	-	-	-	-
g) Financial Derivatives	-	-	-	-	-	-	-	-
h) Others	93,118	94,291	152,737	102,510	147,788	114,995	120,733	118,061
<i>Of which Quota - IMF</i>	92,156	91,315	94,817	99,892	95,607	95,607	97,690	98,706
Less: Liabilities to non-residents (Foreign Liab.)	224,219	222,882	222,254	227,620	223,191	223,769	227,374	226,766
a) Deposits	42,207	42,671	42,384	43,269	42,349	42,602	42,562	42,554
b) Securities other than (N.N.N.I.B Securities)	85,259	83,581	81,962	81,233	82,585	82,585	84,402	82,991
c) Financial Derivatives	-	-	-	-	-	-	-	-
d) Loans (IMF Loan 1 & PRGF and SFD)	96,753	96,630	97,908	103,118	98,257	98,582	100,410	101,221
e) Other (IMF Administration Charges)	-	-	-	-	-	-	-	-
Claims on other Depository Corporations (Banks)	218,359	275,936	271,594	219,646	268,089	206,256	229,848	229,093
a) Loans and Advances	193,579	250,716	253,419	203,461	250,505	188,672	212,664	211,909
b) Internal Bills Purchased and Discounted	116	116	116	116	116	116	116	116
c) Investment in Share Capital	24,664	25,104	18,059	16,069	17,468	17,468	17,068	17,068
Net claims on General government ¹	383,912	461,811	325,360	524,970	320,650	364,575	311,389	336,405
Net claims on Central Govt.	434,153	505,632	377,106	553,985	377,887	427,363	373,875	383,846
Claims on Central Govt.	525,082	575,706	469,696	608,439	424,037	472,503	423,569	428,620
a) Securities	517,625	568,249	461,725	600,468	416,066	464,532	415,598	420,649
b) Other Claims	7,457	7,457	7,971	7,971	7,971	7,971	7,971	7,971
Less: Liabilities to Central Government	90,929	70,074	92,590	54,454	46,150	45,140	49,694	44,774
a) Deposits	90,929	70,074	92,590	54,454	46,150	45,140	49,694	44,774
b) Other Liabilities	-	-	-	-	-	-	-	-

Note: Analytical accounts are the statistical presentation of monetary statistics of State Bank of Pakistan based on monthly reporting closely in the line with MFSM.

2.2 Analytical Accounts of State Bank of Pakistan

(Central Bank Survey)

(Million Rupees)

Description	2006		2007		2007			
	Jun.	Dec.	Jun.	Dec.	Jul.	Aug.	Sep.	Oct.
Net claims on Provincial governments ²	(50,241)	(43,821)	(51,746)	(29,015)	(57,237)	(62,788)	(62,486)	(47,441)
Claims on Provincial governments	16,404	6,560	10,820	14,753	10,893	8,827	11,533	11,144
a) Securities	-	-	-	-	-	-	-	-
b) Other Claims	16,404	6,560	10,820	14,753	10,893	8,827	11,533	11,144
Less: Liabilities to Provincial Govts.	66,645	50,381	62,566	43,768	68,130	71,615	74,019	58,585
a) Deposits	66,645	50,381	62,566	43,768	68,130	71,615	74,019	58,585
b) Other Liabilities	-	-	-	-	-	-	-	-
Claims on other sectors	15,889	17,819	16,187	17,280	16,167	16,048	16,376	16,347
a) Other financial corporations	15,889	17,819	16,187	17,280	16,167	16,048	16,376	16,347
1) Loans and advances to NBFIs	14,216	16,146	14,074	13,967	14,054	13,935	13,862	13,834
2) Investment in NBFIs shares	1,673	1,673	2,113	3,313	2,113	2,113	2,514	2,513
b) Other resident sectors	-	-	-	-	-	-	-	-
Monetary Base (Reserve Money)	1,001,334	1,191,780	1,210,429	1,367,907	1,184,706	1,165,801	1,213,586	1,247,933
a) Currency in circulation (Currency outside Banks)	741,349	874,597	840,418	1,008,186	836,830	839,877	875,348	908,288
b) Liabilities to other Depository Corps.	255,054	312,385	363,003	354,575	341,647	321,902	332,750	334,554
1) Reserve deposits (Banker's deposits)	207,574	264,356	305,169	286,560	280,179	267,305	275,006	272,134
2) Other liabilities (Currency in scheduled banks)	47,480	48,029	57,834	68,015	61,468	54,597	57,744	62,420
c) Deposits included in broad money (Private sector deposits)	4,931	4,798	7,008	5,146	6,229	4,022	5,488	5,091
Public sector funds/deposits	23,225	23,419	23,478	23,504	23,478	23,478	23,478	23,478
Counterpart funds	546	512	519	531	519	521	521	521
Paid up Capital and Reserve	15,514	34,656	55,939	65,079	55,939	55,939	55,939	65,079
Other items (Net)	217,385	147,881	190,356	135,240	201,858	205,864	142,559	150,698
Other Liabilities	270,905	200,070	269,387	243,826	245,313	263,242	194,421	202,869
Less: Other Assets	53,520	52,189	79,031	108,586	43,455	57,378	51,862	52,171
Plus: Consolidation adjustments	-	-	-	-	-	-	-	-

2.2 Analytical Accounts of State Bank of Pakistan (Central Bank Survey)

(Million Rupees)

Description	2007		2008					
	Nov.	Dec.	Jan.	Feb.	Mar.	Apr.	May.	Jun.
Net Foreign Assets	849,499	830,367	804,737	771,122	718,488	662,041	600,862	610,900
Claims on non-residents (Foreign Assets)	1,079,089	1,057,987	1,034,138	1,001,148	955,652	903,503	850,038	898,513
a) Monetary Gold Coin and Bullion	100,736	108,087	121,613	127,740	123,321	118,201	124,608	133,096
b) Holding of SDRs	13,458	13,149	13,258	13,287	13,635	14,225	14,706	14,748
c) Foreign Currency	1,723	3,563	3,232	1,859	2,285	2,247	4,444	11,088
d) Securities other than shares (Foreign)	714,683	681,894	658,248	623,507	556,921	520,317	424,345	439,105
e) Deposits	146,773	148,784	136,793	131,741	149,016	139,118	166,984	183,030
f) Loans	-	-	-	-	-	-	-	-
g) Financial Derivatives	-	-	-	-	-	-	-	-
h) Others	101,716	102,510	100,994	103,014	110,474	109,395	114,951	117,446
<i>Of which Quota - IMF</i>	100,633	99,892	99,892	101,922	106,614	108,304	112,406	115,304
Less: Liabilities to non-residents (Foreign Liab.)	229,590	227,620	229,401	230,026	237,164	241,462	249,174	287,613
a) Deposits	43,055	43,269	43,891	43,813	44,021	45,219	46,874	81,675
b) Securities other than shares (N.N.N.I.B Securities)	83,433	81,233	82,551	82,465	85,443	82,811	84,264	83,282
c) Financial Derivatives	-	-	-	-	-	-	-	-
d) Loans (IMF Loan 1 & PRGF and SDF)	103,102	103,118	102,959	103,748	107,700	113,432	118,036	122,656
e) Other (IMF Administration Charges)	-	-	-	-	-	-	-	-
Claims on other Depository Corporations (Banks)	229,186	219,646	218,154	214,888	215,112	217,413	219,921	218,809
a) Loans and Advances	212,701	203,461	201,969	198,703	199,427	201,728	204,236	203,124
b) Internal Bills Purchased and Discounted	116	116	116	116	116	116	116	116
c) Investment in Share Capital	16,369	16,069	16,069	16,069	15,569	15,569	15,569	15,569
Net Claims on General government ¹	480,294	524,970	624,614	672,999	730,517	838,231	888,042	1,014,679
Net claims on Central government	526,890	553,985	683,986	727,818	800,844	906,529	959,849	1,048,521
Claims on Central government	560,462	608,439	729,066	776,437	854,833	954,960	1,007,114	1,082,744
a) Securities	552,491	600,468	721,095	768,466	846,862	946,989	999,143	1,074,594
b) Other Claims	7,971	7,971	7,971	7,971	7,971	7,971	7,971	8,150
Less: Liabilities to Central government	33,572	54,454	45,080	48,619	53,989	48,431	47,265	34,223
a) Deposits	33,572	54,454	45,080	48,619	53,989	48,431	47,265	34,223
b) Other Liabilities	-	-	-	-	-	-	-	-

Revaluation Procedure:

- Gold is revalued on month end basis from June 07 before that it was revalued at the end of financial year (June end) on the basis of closing London Market Rate.
- SDR holdings (with IMF and SBP) are revalued on month end basis from June 07 before that it was revalued on weekly basis.
- IMF related balances, IMF Account No.1, IMF Account No. 2, IMF securities account and IMF quota account, are revalued at the close of IMF financial year i.e. 30th April and also 30th June of SBP.
- Liabilities balances such as PRGF loan account & IMF (SDF) loan account are revalued on month end basis.

2.2 Analytical Accounts of State Bank of Pakistan (Central Bank Survey)

(Million Rupees)

Description	2007		2008					
	Nov.	Dec.	Jan.	Feb.	Mar.	Apr.	May.	Jun.
Net claims on Provincial governments ²	(46,596)	(29,015)	(59,372)	(54,819)	(70,327)	(68,298)	(71,807)	(33,842)
Claims on Provincial governments	12,751	14,753	14,802	14,816	15,519	15,624	15,481	18,627
a) Securities	-	-	-	-	-	-	-	-
b) Other Claims	12,751	14,753	14,802	14,816	15,519	15,624	15,481	18,627
Less: Liabilities to Provincial Govts.	59,347	43,768	74,174	69,635	85,846	83,922	87,288	52,469
a) Deposits	59,347	43,768	74,174	69,635	85,846	83,922	87,288	52,469
b) Other Liabilities	-	-	-	-	-	-	-	-
Claims on other sectors	16,488	17,280	17,289	15,905	16,353	16,399	16,469	16,424
a) Other financial corporations	16,488	17,280	17,289	15,905	16,353	16,399	16,469	16,424
1) Loans and advances to NBFIs	13,975	13,967	13,976	12,592	12,540	12,586	12,656	12,611
2) Investment in NBFIs shares	2,513	3,313	3,313	3,313	3,813	3,813	3,813	3,813
b) Other resident sectors	-	-	-	-	-	-	-	-
Monetary Base (Reserve Money)	1,271,759	1,367,907	1,314,202	1,350,246	1,338,148	1,328,705	1,371,663	1,471,367
a) Currency in circulation	939,300	1,008,186	979,019	988,874	982,106	986,204	998,151	982,175
b) Liabilities to other Depository Corps.	327,365	354,575	330,181	356,381	352,190	338,200	369,295	484,932
1) Reserve deposits (Banker's deposits)	271,457	286,560	269,463	300,115	288,535	276,507	310,255	415,818
2) Other liabilities (Currency in scheduled banks)	55,908	68,015	60,718	56,266	63,655	61,693	59,040	69,114
c) Deposits included in broad money (Private sector deposits)	5,094	5,146	5,002	4,991	3,852	4,301	4,217	4,260
Public sector funds/deposits	23,486	23,504	23,504	23,504	23,504	23,504	23,597	23,597
Counterpart funds	523	531	531	533	533	533	535	543
Paid up Capital and Reserve	65,079	65,079	65,079	65,079	65,079	65,079	65,079	65,079
Other items (Net)	214,619	135,240	261,476	235,552	253,206	316,263	264,422	300,228
Other Liabilities	269,169	243,826	315,952	300,094	343,229	368,338	364,368	400,687
Less: Other Assets	54,550	108,586	54,476	64,542	90,023	52,075	99,946	100,459
Plus: Consolidation adjustments	-	-	-	-	-	-	-	-

1. General Government includes Central Government and Provincial Governments

2. Provincial Governments includes Provincial Governments and Local / city Governments

2.3 Analytical Accounts of Scheduled Banks (Other Depository Corporations Survey)

(Million Rupees)

Description	2006		2007		2007			
	Jun.	Dec.	Jun.	Dec.	Jul.	Aug.	Sep.	Oct.
Net Foreign Assets	146,615	132,362	195,836	121,469	188,344	167,552	177,603	155,010
Claims on non-residents (Foreign Assets)	174,951	163,641	227,594	167,455	218,073	196,048	205,017	183,116
a) Foreign currency	6,415	9,546	7,352	13,046	7,651	8,895	8,972	10,329
b) Deposits	92,240	79,418	143,921	81,219	133,641	111,509	120,001	97,500
c) Securities other than shares ¹	76,296	74,677	76,321	73,190	76,781	75,644	76,044	75,287
d) Loans	-	-	-	-	-	-	-	-
e) Financial derivatives	-	-	-	-	-	-	-	-
f) Other	-	-	-	-	-	-	-	-
Less: Liabilities to non-residents (Foreign Liab.)	28,336	31,279	31,758	45,986	29,729	28,496	27,414	28,106
a) Deposits	23,910	26,283	24,644	22,510	24,166	22,433	22,091	22,439
b) Securities other than shares	-	-	-	-	-	-	-	-
c) Financial derivatives	-	-	-	-	-	-	-	-
d) Loans	4,426	4,996	7,114	23,476	5,563	6,063	5,323	5,667
e) Other	-	-	-	-	-	-	-	-
Claims on central bank	249,658	306,682	365,216	345,691	345,014	324,579	336,461	328,927
a) Currency	47,480	48,029	57,834	68,015	61,468	54,597	57,744	62,420
b) Reserve deposits	202,178	258,653	307,382	277,676	283,546	269,982	278,717	266,507
c) Other Claims	-	-	-	-	-	-	-	-
Net claims on General Government ²	419,036	364,574	572,959	575,382	614,958	630,650	649,085	623,725
Net claims on Central Govt.	484,418	455,523	685,634	702,879	735,111	747,856	776,535	753,508
Claims on Central Govt.	651,814	626,982	898,453	965,029	955,471	976,296	1,001,716	999,624
a) Securities	597,924	568,506	838,985	912,188	897,111	917,189	941,968	941,781
b) Other claims	53,890	58,476	59,468	52,841	58,360	59,107	59,748	57,843
Less: Liabilities to Central Govt.	167,396	171,459	212,819	262,150	220,360	228,440	225,181	246,116
a) Deposits	167,396	171,459	212,819	262,150	220,360	228,440	225,181	246,116
b) Other Liabilities	-	-	-	-	-	-	-	-
Net claims on provincial governments ³	(65,382)	(90,949)	(112,675)	(127,497)	(120,153)	(117,206)	(127,450)	(129,783)
Claims on provincial governments	53,386	35,320	40,891	24,937	40,282	40,258	37,287	32,557
a) Securities	76	75	75	75	75	75	75	75
b) Other claims	53,310	35,245	40,816	24,862	40,207	40,183	37,212	32,482
Less: Liabilities to prov. governments	118,768	126,269	153,566	152,434	160,435	157,464	164,737	162,340
a) Deposits	118,768	126,269	153,566	152,434	160,435	157,464	164,737	162,340
b) Other liabilities	-	-	-	-	-	-	-	-

Note: Analytical accounts are the statistical presentation of monetary statistics of Scheduled Banks based on monthly reporting closely in the line with MFSM.

2.3 Analytical Accounts of Scheduled Banks (Other Depository Corporations Survey)

(Million Rupees)

Description	2006		2007		2007			
	Jun.	Dec.	Jun.	Dec.	Jul.	Aug.	Sep.	Oct.
Claims on other sectors	2,192,086	2,455,960	2,603,164	2,895,084	2,551,216	2,559,188	2,583,711	2,645,271
a) Other financial corporations	98,459	121,183	144,224	155,659	140,247	131,483	127,771	148,890
b) Public non financial corporations	136,209	136,126	164,140	176,606	156,659	154,904	163,092	159,620
c) Other non financial corporations	798,577	906,975	926,057	1,010,516	917,795	923,709	655,696	988,360
d) Other resident sectors	1,158,841	1,291,676	1,368,743	1,552,303	1,336,515	1,349,092	1,637,152	1,348,401
Liabilities to Central Bank	202,157	255,829	269,415	241,778	257,378	197,757	219,184	218,384
Deposits included in broad money	2,661,514	2,786,148	3,205,560	3,374,608	3,147,470	3,218,083	3,234,185	3,213,700
<i>Transferable deposits (Demand deposits)</i>	1,974,405	1,975,397	2,308,209	2,390,315	2,255,464	2,297,505	2,288,186	2,281,380
a) Other financial corporations	31,267	30,561	62,008	48,230	56,270	51,026	52,318	45,852
b) Public non financial corporations	124,708	83,627	126,860	158,409	122,902	163,283	156,498	147,323
c) Other non financial corporations	593,012	623,956	727,738	684,755	684,295	683,354	275,795	656,878
d) Other resident sectors	1,225,418	1,237,253	1,391,603	1,498,921	1,391,997	1,399,842	1,803,575	1,431,327
<i>Time deposits</i>	687,109	810,751	897,351	984,293	892,006	920,578	945,999	932,320
a) Other financial corporations	18,842	28,927	29,838	57,949	32,529	37,730	38,379	34,752
b) Public non financial corporations	131,483	131,955	145,570	140,995	133,755	137,346	134,990	121,042
c) Other non financial corporations	171,011	203,150	248,101	239,116	253,930	264,058	265,044	267,343
d) Other resident sectors	365,773	446,719	473,842	546,233	471,792	481,444	507,586	509,183
Deposits Excluded from broad money	54,626	64,030	58,236	54,754	43,898	39,582	40,102	43,356
Loans	165,957	159,980	214,667	203,901	166,026	168,384	165,513	186,013
<i>Of which: Other financial corporations</i>	1,448	5,203	3,136	7,231	5,570	3,817	6,629	10,797
Financial Derivatives	-	-	-	-	-	-	-	-
Central Govt. Lending Fund	9,314	9,314	9,762	9,414	9,427	9,426	9,422	9,422
Long -Term Foreign Liabilities	84	65	56	39	50	50	50	49
Shares and Other equity	246,334	317,141	420,191	452,789	415,532	411,545	398,631	403,175
a) Funds contributed by owners	121,198	165,858	206,118	237,896	207,797	209,265	223,089	224,974
b) Retained earnings	29,798	26,120	44,263	56,407	40,121	39,157	37,358	37,887
c) General & Special Reserves	95,997	109,051	143,720	137,655	144,095	145,303	117,621	117,230
d) Valuation adjustment	(659)	16,112	26,090	20,831	23,519	17,820	20,563	23,084
Other items (net)	(332,587)	(332,926)	(440,710)	(399,660)	(340,249)	(362,854)	(320,225)	(321,162)
Other liabilities	790,449	903,638	854,313	989,943	884,548	938,202	1,037,132	1,116,675
<i>Less: Other Assets</i>	1,123,036	1,236,564	1,295,023	1,389,603	1,224,797	1,301,056	1,357,357	1,437,837
<i>Plus Consolidation adjustment</i>	-	-	-	-	-	-	-	-

2.3 Analytical Accounts of Scheduled Banks (Other Depository Corporations Survey)

(Million Rupees)

Description	2007		2008					
	Nov.	Dec.	Jan.	Feb.	Mar.	Apr.	May.	Jun.
Net Foreign Assets	134,139	121,469	116,832	114,911	123,383	118,984	134,337	187,857
Claims on non-residents (Foreign Assets)	166,479	167,455	150,542	147,748	158,359	152,228	165,593	220,194
a) Foreign currency	10,267	13,046	11,835	10,668	9,476	9,127	10,812	11,036
b) Deposits	83,514	81,219	68,017	66,675	75,583	66,602	75,592	123,061
c) Securities other than shares ¹	72,698	73,190	70,690	70,405	73,300	76,499	79,189	86,097
d) Loans	-	-	-	-	-	-	-	-
e) Financial derivatives	-	-	-	-	-	-	-	-
f) Other	-	-	-	-	-	-	-	-
Less: Liabilities to non-residents	32,340	45,986	33,710	32,837	34,976	33,244	31,256	32,337
a) Deposits	22,157	22,510	22,374	22,019	22,294	23,097	24,715	25,470
b) Securities other than shares	-	-	-	-	-	-	-	-
c) Financial derivatives	-	-	-	-	-	-	-	-
d) Loans	10,183	23,476	11,336	10,818	12,682	10,147	6,541	6,867
e) Other	-	-	-	-	-	-	-	-
Claims on central bank	319,367	345,691	329,971	361,879	358,110	347,048	377,600	490,869
a) Currency	55,908	68,015	60,718	56,266	63,655	61,693	59,040	69,114
b) Reserve deposits	263,459	277,676	269,253	305,613	294,455	285,355	318,560	421,755
c) Other Claims	-	-	-	-	-	-	-	-
Net claims on General government ²	570,280	575,382	486,343	496,439	472,841	419,770	442,442	464,041
Net claims on Central government	701,342	702,879	631,877	654,290	632,091	575,356	572,217	598,377
Claims on Central government	959,698	965,029	893,548	899,636	879,528	823,712	809,262	821,666
a) Securities	905,994	912,188	830,477	825,462	780,795	707,677	681,985	734,091
b) Other claims	53,704	52,841	63,071	74,174	98,733	116,035	127,277	87,575
Less: Liabilities to Central government	258,356	262,150	261,671	245,346	247,437	248,356	237,045	223,289
a) Deposits ³	258,356	262,150	261,671	245,346	247,437	248,356	237,045	223,289
b) Other Liabilities	-	-	-	-	-	-	-	-
Net Claims on Provincial governments ⁴	(131,062)	(127,497)	(145,534)	(157,851)	(159,250)	(155,586)	(129,775)	(134,336)
Claims on Provincial governments	28,845	24,937	16,962	11,106	7,751	12,143	46,035	45,583
a) Securities	79	75	161	75	75	75	75	75
b) Other claims	28,766	24,862	16,801	11,031	7,676	12,068	45,960	45,508
Less: Liabilities to Prov. governments	159,907	152,434	162,496	168,957	167,001	167,729	175,810	179,919
a) Deposits	159,907	152,434	162,496	168,957	167,001	167,729	175,810	179,919
b) Other liabilities	-	-	-	-	-	-	-	-

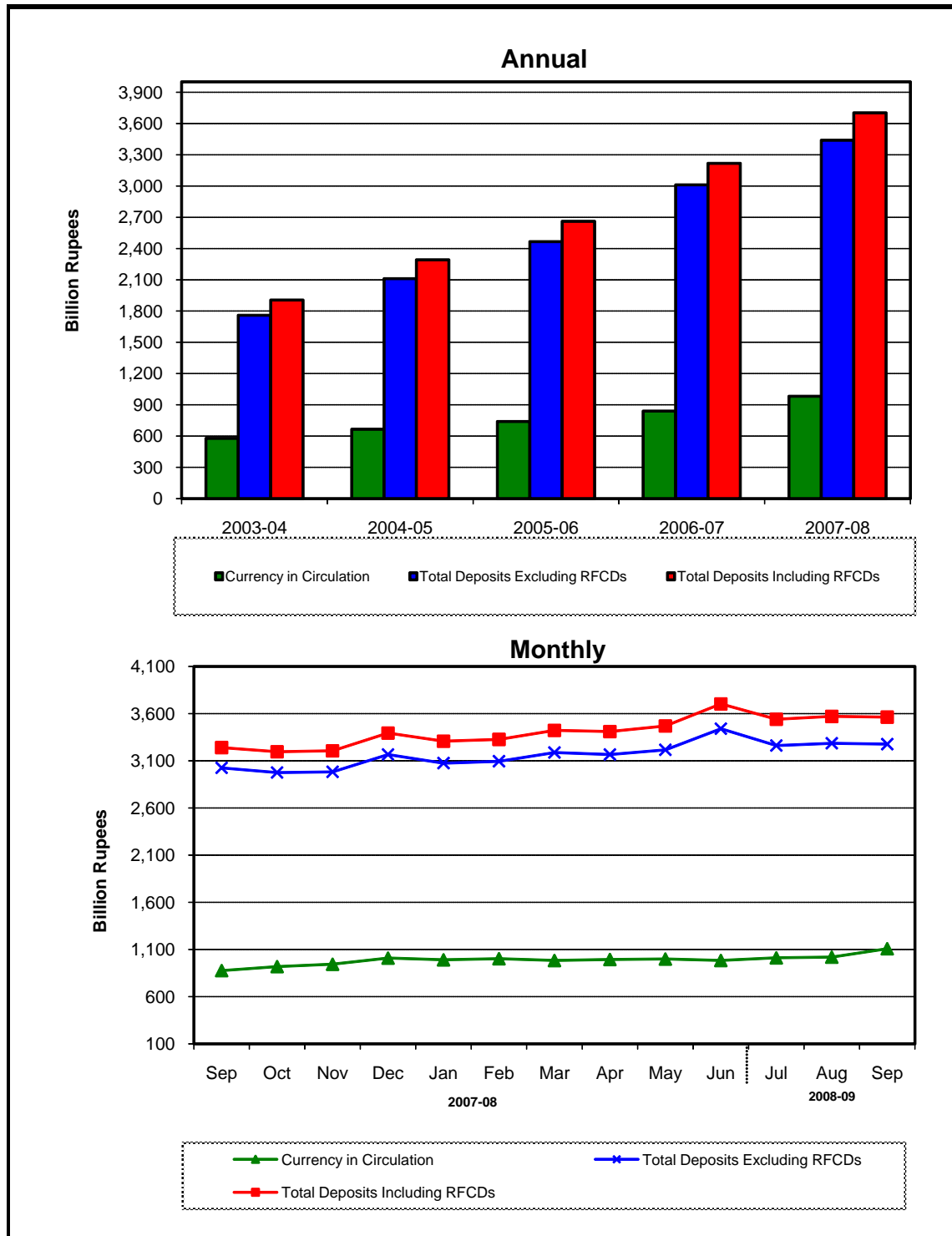
2.3 Analytical Accounts of Scheduled Banks (Other Depository Corporations Survey)

(Million Rupees)

Description	2007		2008					
	Nov.	Dec.	Jan.	Feb.	Mar.	Apr.	May.	Jun.
Claims on other sectors	2,754,044	2,895,084	2,893,092	2,951,668	3,004,714	3,057,132	3,047,126	3,036,653
a) Other financial corporations	157,692	155,659	138,629	139,808	146,288	140,644	132,900	134,420
b) Public non financial corporations	170,432	176,606	171,470	196,720	195,580	209,783	228,266	182,223
c) Other non financial corporations	1,039,289	1,010,516	1,026,746	1,058,662	1,064,125	1,091,078	1,091,754	1,107,543
d) Other resident sectors	1,386,631	1,552,303	1,556,247	1,556,478	1,598,721	1,615,627	1,594,206	1,612,467
Liabilities to Central Bank	220,049	241,778	219,712	215,159	224,949	216,967	222,517	216,495
Deposits included in broad money	3,275,848	3,374,608	3,320,148	3,363,260	3,412,167	3,406,615	3,468,537	3,684,796
<i>Transferable deposits (Demand deposits)</i>	2,331,496	2,390,315	2,342,289	2,361,266	2,379,707	2,372,973	2,411,639	2,566,935
a) Other financial corporations	55,559	48,230	51,246	51,050	51,693	53,056	47,508	49,839
b) Public non financial corporations	172,827	158,409	157,413	167,059	150,302	148,281	139,431	132,575
c) Other non financial corporations	671,391	684,755	660,537	672,223	683,500	689,435	713,066	777,654
d) Other resident sectors	1,431,719	1,498,921	1,473,093	1,470,934	1,494,212	1,482,201	1,511,634	1,606,867
<i>Time deposits</i>	944,352	984,293	977,859	1,001,994	1,032,460	1,033,642	1,056,898	1,117,861
a) Other financial corporations	38,015	57,949	50,930	46,203	53,252	56,741	55,540	63,934
b) Public non financial corporations	133,685	140,995	145,902	150,755	142,642	149,371	142,670	158,827
c) Other non financial corporations	239,881	239,116	244,533	249,198	259,494	253,061	252,852	278,151
d) Other resident sectors	532,771	546,233	536,494	555,838	577,072	574,469	605,836	616,949
Deposits Excluded from broad money	47,191	54,754	47,781	40,869	42,793	40,242	42,490	64,116
Loans	191,182	203,901	183,240	195,748	196,294	200,984	205,706	159,968
<i>Of which: other financial corporations</i>	10,329	7,231	4,261	3,985	6,681	3,949	7,780	4,488
Financial Derivatives	-	-	-	-	-	-	-	-
Central Govt. Lending Fund	9,414	9,414	9,413	9,413	9,329	9,329	9,329	11,246
Long -Term Foreign Liabilities	48	39	39	39	35	3,172	3,364	3,430
Shares and Other equity	405,644	452,789	470,500	475,861	477,181	473,171	461,684	461,019
a) Funds contributed by owners	228,300	237,896	247,994	239,487	248,700	251,190	255,086	255,137
b) Retained earnings	33,809	56,407	65,998	73,556	56,923	51,396	53,281	51,009
c) General & Special Reserves	119,108	137,655	138,132	143,190	156,831	157,578	152,102	154,518
d) Valuation adjustment	24,427	20,831	18,376	19,628	14,727	13,007	1,215	355
Other items (net)	(371,544)	(399,660)	(424,593)	(375,456)	(403,697)	(407,544)	(408,884)	(421,650)
Other liabilities	1,156,827	989,943	749,884	863,851	873,615	958,967	973,571	1,089,647
<i>Less: Other Assets</i>	1,528,371	1,389,603	1,174,477	1,239,307	1,277,312	1,366,511	1,382,455	1,511,297
<i>Plus Consolidation adjustment</i>	-	-	-	-	-	-	-	-

1. Including Non-residents Securities
2. General Government includes Central Government and Provincial Governments
3. Monetary Survey (Stocks) including Privatization Commission amount in Govt. Deposits
4. Provincial Governments includes Provincial Governments and Local/City Governments

Monetary Statistics



2.4 Monetary Statistics

(Million Rupees)

Last Saturday/ Last working day	Currency in Circulation	Other Deposits with SBP ¹	Currency in tills of Scheduled Banks	Banks' Deposits with SBP	Reserve Money (M ₀) (1+2+3+4)	Total Deposits Excluding RFCDs	Resident Foreign Currency Deposits	Total Deposits Including RFCDs	Broad Money (M ₂) (1+2+8)	Money Multi- plier (9/5)
	1	2	3	4	5	6	7	8	9	10
2003 Dec.	567,519	3,495	30,273	145,224	746,511	1,557,597	135,019	1,692,616	2,263,630	3.03
2004 Jun.	578,116	2,116	36,432	156,204	772,868	1,759,566	145,694	1,905,260	2,485,492	3.22
Dec.	655,283	5,499	38,836	196,348	895,966	1,895,052	172,493	2,067,545	2,728,327	3.05
2005 Jun.	665,901	3,335	43,472	196,302	909,010	2,111,113	180,295	2,291,408	2,960,644	3.26
Dec.	731,749	3,327	42,527	207,750	985,352	2,266,913	189,525	2,456,438	3,191,513	3.24
2006 Jun.	740,390	4,931	48,439	207,574	1,001,334	2,466,083	195,501	2,661,584	3,406,905	3.40
Dec.	874,260	4,798	48,367	264,356	1,191,781	2,596,030	198,719	2,794,749	3,673,807	3.08
2007 Jun.	840,181	7,012	58,072	305,169	1,210,434	3,010,650	207,312	3,217,962	4,065,155	3.36
Dec.	1,007,831	5,153	68,371	286,560	1,367,915	3,165,819	228,042	3,393,861	4,406,846	3.22
2008 Jun. ^P	982,325	4,256	68,966	415,818	1,471,365	3,439,122	263,430	3,702,552	4,689,134	3.19
2007 Sep.	874,919	5,454	58,000	275,006	1,213,379	3,023,701	215,048	3,238,749	4,119,122	3.39
Oct.	917,590	5,150	57,405	276,034	1,256,179	2,975,067	220,203	3,195,271	4,118,010	3.28
Nov.	942,631	5,103	55,132	292,145	1,295,011	2,982,783	222,533	3,205,317	4,153,051	3.21
Dec.	1,007,831	5,153	68,371	286,560	1,367,915	3,165,819	228,042	3,393,861	4,406,846	3.22
Jan.	989,245	5,074	56,288	255,664	1,306,270	3,074,672	232,699	3,307,371	4,301,690	3.29
Feb.	1,001,090	5,615	54,429	275,255	1,336,389	3,094,386	231,863	3,326,249	4,332,954	3.24
Mar.	982,001	3,850	63,761	288,535	1,338,147	3,187,355	234,882	3,422,237	4,408,088	3.29
2008 Apr.	993,061	4,294	56,757	289,827	1,343,940	3,165,770	243,252	3,409,022	4,406,377	3.28
May.	997,813	4,212	59,380	310,255	1,371,659	3,215,395	252,852	3,468,248	4,470,273	3.26
Jun. ^P	982,325	4,256	68,966	415,818	1,471,365	3,439,122	263,430	3,702,552	4,689,134	3.19
Jul. ^P	1,010,388	4,214	59,907	344,651	1,419,160	3,261,229	278,803	3,540,032	4,554,634	3.21
Aug. ^P	1,017,881	4,237	57,930	348,361	1,428,409	3,285,357	284,728	3,570,085	4,592,203	3.21
Sep. ^P	1,107,349	3,544	66,255	381,425	1,558,573	3,275,826	287,072	3,562,898	4,673,791	3.00

Source: Statistics & DWH.Department.SBP

1- Excluding IMF A/c Nos. 1 & 2, SAF loan account, counterpart funds, deposits of foreign central banks, foreign governments, international organizations and deposit money banks.

Note : i - Data is based on weekly returns. The quarterly data covers the period up to the last working day and the Monthly data up to the last Saturday of the month.

ii-Compilation of M1 based on weekly data has been discontinued. Now M1 is being compiled on the basis of monthly returns and is given in Table 2.1

2.5 Analysis of Causative Factors for Changes in Monetary Statistics

(Million Rupees)

Description	2004-05			2005-06		
	Jul.-Dec.	Jan.-Jun.	Total	Jul.-Dec.	Jan.-Jun.	Total
1. Public Sector	28,891	62,251	91,141	64,281	22,598	86,879
i) Budgetary support	23,763	43,389	67,152	80,232	(13,169)	67,063
ii) Commodity operations	3,797	18,166	21,963	(15,123)	35,048	19,926
iii) Effect of Zakat fund etc.	1,331	695	2,026	(829)	719	(110)
2. Credit to Non-Government Sector (A+B+C)	268,907	149,792	418,699	294,145	114,255	408,401
(A) Credit to private Sector	284,703	153,145	437,848	297,651	104,146	401,797
i) Commercial Banks	284,581	152,149	436,730	295,864	121,548	417,411
ii) Specialized Banks	122	996	1,118	1,787	(17,402)	(15,615)
(B) Credit to Public Sector Enterprise (PSEs)	(11,183)	(1,506)	(12,689)	(1,994)	9,636	7,643
i) Autonomous Bodies	(1,543)	(526)	(2,069)	(2,641)	7,396	4,755
ii) Others	(8,886)	(128)	(9,014)	(38)	2,437	2,399
iii) PSEs Special Account-Debt Replacement with SBP	(754)	(852)	(1,606)	686	(197)	489
(C) Other Financial Institutions (SBP Credit to NBFIs)	(4,613)	(1,847)	(6,460)	(1,512)	473	(1,038)
3. Counterpart Funds	(21)	109	88	14	(21)	(7)
4. Other Items (net)	(58,244)	(30,281)	(88,525)	(60,902)	(61,514)	(122,416)
5. Domestic Credit Expansion (+) / Contraction (-) (1+2+3+4)	239,533	181,871	421,404	297,539	75,318	372,857
6. Foreign Assets (net)	3,302	50,446	53,748	(66,670)	140,073	73,403
7. Monetary Expansion ((5+6)	242,834	232,318	475,152	230,869	215,392	446,260

Description	2007						
	Jun.	Jul.	Aug.	Sep.	Oct.	Nov.	Dec.
1. Public Sector	(77,182)	35,860	49,549	(21,981)	(1,649)	53,217	86,606
i) Budgetary support	(78,861)	41,317	48,661	(18,379)	2,819	60,980	93,210
ii) Commodity operations	1,518	(5,380)	(140)	(2,530)	(3,681)	(7,515)	(6,754)
iii) Effect of Zakat fund etc.	161	(77)	1,029	(1,072)	(787)	(248)	150
2. Credit to Non-Government Sector (A+B+C)	100,182	(54,840)	8,161	47,917	38,009	65,803	169,914
(A) Credit to private Sector	94,720	(54,469)	8,977	42,612	41,111	64,832	158,290
i) Commercial Banks	93,822	(54,805)	6,041	42,896	40,384	66,484	158,406
ii) Specialized Banks	898	336	2,936	(284)	727	(1,652)	(116)
(B) Credit to Public Sector Enterprise (PSEs)	5,531	(358)	(702)	4,989	(3,080)	837	10,832
i) Autonomous Bodies	8,479	1,121	(590)	3,552	596	4,181	9,632
ii) Others	(2,923)	(1,479)	(112)	1,437	(3,676)	(3,336)	1,218
iii) PSEs Special Account-Debt Replacement with SBP	(25)	0	0	0	0	(7)	(18)
(C) Other Financial Institutions (SBP Credit to NBFIs)	(69)	(13)	(115)	316	(22)	133	793
3. Counterpart Funds	(7)	0	(2)	0	0	(2)	(7)
4. Other Items (net)	(25,621)	(47,278)	(3,441)	63,336	(36,144)	(30,771)	60,016
5. Domestic Credit Expansion (+) / Contraction (-) (1+2+3+4)	(2,629)	(66,258)	54,267	89,273	216	88,247	316,529
6. Foreign Assets (net)	196,928	(8,615)	(32,008)	17,482	(1,501)	(53,207)	(62,734)
7. Monetary Expansion (+) / Contraction (-) (5+6)	194,299	(74,873)	22,259	106,755	(1,285)	35,040	253,795

Note 1. The composition of autonomous bodies has changed over the years. At present, WAPDA, OGDC, KESC, PTCL, PIA, and Pak. Steel are included in the autonomous bodies.
2. The data has been revised due to inclusion of privatization commission account with NBP in government deposits since Jun 2003 to Jun 2006 (half yearly basis) and Jun 2006 on monthly basis upto end-Jun 2007.

2.5 Analysis of Causative Factors for Changes in Monetary Statistics

(Million Rupees)

Description	2006-07			2007-08 ^P		
	Jul.-Dec.	Jan.-Jun.	Total	Jul.-Dec.	Jan.-Jun.	Total
1. Public Sector	19,945	72,899	92,844	201,602	382,189	583,792
i) Budgetary support	37,278	64,737	102,015	228,608	325,943	554,551
ii) Commodity operations	(15,934)	6,724	(9,210)	(26,000)	54,652	28,652
iii) Effect of Zakat fund etc.	(1,400)	1,438	39	(1,006)	1,594	588
2. Credit to Non-Government Sector (A+B+C)	251,333	134,371	385,705	274,965	166,705	441,670
(A) Credit to private Sector	250,782	114,936	365,718	261,354	147,073	408,427
i) Commercial Banks	248,065	115,526	363,591	259,406	142,837	402,243
ii) Specialized Banks	2,717	(589)	2,128	1,948	4,236	6,184
(B) Credit to Public Sector Enterprise (PSEs)	(1,379)	21,068	19,689	12,518	20,488	33,005
i) Autonomous Bodies	4,475	16,694	21,169	18,492	10,747	29,239
ii) Others	(5,660)	4,433	(1,227)	(5,949)	9,834	3,884
iii) PSEs Special Account-Debt Replacement with SBP	(194)	(59)	(253)	(25)	(93)	(118)
(C) Other Financial Institutions (SBP Credit to NBFIs)	1,930	(1,632)	298	1,093	(855)	238
3. Counterpart Funds	34	(7)	27	(12)	(12)	(24)
4. Other Items (net)	6,640	(101,517)	(94,877)	5,717	(90,798)	(85,081)
5. Domestic Credit Expansion (+) / Contraction (-) (1+2+3+4)	277,953	105,746	383,699	482,273	458,084	940,357
6. Foreign Assets (net)	(11,050)	285,601	274,551	(140,582)	(175,796)	(316,378)
7. Monetary Expansion ((5+6)	266,903	391,347	658,250	341,691	282,288	623,979
2008						
	Jan.	Feb.	Mar.	Apr.	May.	Jun. ^P
1. Public Sector	5,037	67,993	37,559	47,772	73,125	150,703
i) Budgetary support	3,716	64,102	12,708	24,091	31,284	190,042
ii) Commodity operations	1,311	3,596	23,780	23,772	42,024	(39,831)
iii) Effect of Zakat fund etc.	10	295	1,071	(91)	(183)	492
2. Credit to Non-Government Sector (A+B+C)	(11,718)	44,423	71,648	33,898	31,600	(3,145)
(A) Credit to private Sector	(16,310)	28,395	79,840	18,017	12,384	24,746
i) Commercial Banks	(16,800)	30,839	75,981	17,924	10,786	24,107
ii) Specialized Banks	490	(2,443)	3,860	93	1,599	639
(B) Credit to Public Sector Enterprise (PSEs)	4,581	15,836	(7,064)	15,833	19,147	(27,847)
i) Autonomous Bodies	789	4,764	(566)	(2,361)	6,038	2,084
ii) Others	3,792	11,073	(6,498)	18,194	13,203	(29,930)
iii) PSEs Special Account-Debt Replacement with SBP	0	0	0	0	(93)	0
(C) Other Financial Institutions (SBP Credit to NBFIs)	11	191	(1,129)	48	68	(44)
3. Counterpart Funds	0	(2)	0	0	(2)	(7)
4. Other Items (net)	(67,402)	(26,084)	2,006	(48,507)	36,505	12,684
5. Domestic Credit Expansion (+) / Contraction (-) (1+2+3+4)	(74,083)	86,328	111,213	33,162	141,228	160,235
6. Foreign Assets (net)	(31,073)	(55,064)	(36,078)	(34,874)	(77,332)	58,626
7. Monetary Expansion ((5+6)	(105,156)	31,264	75,134	(1,711)	63,896	218,861

2.6 Liabilities and Assets of the State Bank of Pakistan Issue Department

(Million Rupees)

Last Saturday/ Last working day	LIABILITIES			Total Liabilities / Assets	ASSETS				Rupee Coins / Notes
	Notes held in the Banking Department	Notes in Circulation	Total		Gold and Foreign Assets			Total	
					(1) Gold Coins and Bullion	(2) Approved Foreign Exchange	(3) India Notes		
2003	Dec.	125.8	595,159.2	595,285.0	41,257.0	514,517.5	535.2	556,309.6	2,434.6
2004	Jun.	160.8	611,742.9	611,903.7	47,532.1	514,138.8	543.8	562,214.7	2,799.2
	Dec.	126.0	690,946.2	691,072.2	47,532.1	434,236.5	543.8	482,312.4	3,067.7
2005	Jun.	145.6	705,720.1	705,865.7	53,870.0	484,308.4	593.0	538,771.4	2,961.2
	Dec.	156.6	769,617.5	769,774.1	53,870.0	426,373.5	593.0	480,836.5	2,469.6
2006	Jun.	139.3	784,235.9	784,375.2	76,317.3	567,347.6	562.6	644,227.4	2,865.5
	Dec.	140.9	917,808.9	917,949.9	76,317.3	561,728.7	562.6	638,608.5	2,640.0
2007	Jun.	135.6	893,292.8	893,428.4	81,277.1	697,851.6	638.2	779,767.0	3,012.3
	Dec.	187.7	1,076,328.6	1,076,516.3	99,127.4	699,199.5	638.2	798,965.2	2,730.4
2008	Jun.	160.7	1,050,148.2	1,050,308.9	122,618.6	465,771.5	638.2	589,028.4	2,722.5
2007	Jul.	190.2	895,504.4	895,694.6	81,277.1	661,013.3	638.2	742,928.6	2,978.5
	Aug.	159.6	894,001.9	894,161.5	83,082.5	703,741.8	638.2	787,462.5	2,945.4
	Sep.	193.1	927,989.9	928,183.0	93,238.4	703,048.2	638.2	796,924.9	2,866.9
	Oct.	163.1	969,842.4	970,005.5	93,408.2	761,605.3	638.2	855,651.8	2,819.6
	Nov.	195.2	992,576.4	992,771.5	99,182.1	752,272.6	638.2	852,092.9	2,785.6
	Dec.	187.7	1,076,328.6	1,076,516.3	99,127.4	699,199.5	638.2	798,965.2	2,730.4
2008	Jan.	126.0	1,040,269.2	1,040,395.2	106,361.1	686,878.0	638.2	793,877.4	2,709.2
	Feb.	130.4	1,050,242.4	1,050,372.8	119,671.5	623,222.0	638.2	743,531.9	2,686.9
	Mar.	183.1	1,041,863.2	1,042,046.3	125,700.4	570,056.8	638.2	696,395.5	2,660.3
	Apr.	145.5	1,044,472.9	1,044,618.4	121,351.9	557,199.1	638.2	679,189.3	2,632.4
	May.	165.5	1,051,806.8	1,051,972.3	122,618.6	439,025.4	638.2	562,282.3	2,586.4
	Jun.	160.7	1,050,148.2	1,050,308.9	122,618.6	465,771.5	638.2	589,028.4	2,722.5
	Jul.	110.5	1,065,302.6	1,065,413.1	130,970.6	420,659.6	683.7	552,313.9	2,691.8

2.6 Liabilities and Assets of the State Bank of Pakistan Issue Department

(Million Rupees)

Last Saturday/ Last working day	A S S E T S								
	Domestic Assets				With Reserve Bank of India pending transfer to Pakistan				
	Govt. of Pakistan Securities	Exchange & other Commercial Papers	Total	Gold Coins and Bullion	Sterling Securities	Govt. of India Securities	Rupee Coin	Total	
2003	Dec.	35,457.8	78.5	37,970.9	671.7	316.5	12.6	3.7	1,004.5
2004	Jun.	45,671.5	78.5	48,549.2	773.1	350.1	12.8	3.8	1,139.8
	Dec.	204,473.9	78.5	207,620.1	773.1	350.1	12.8	3.8	1,139.8
2005	Jun.	162,802.6	78.5	165,842.3	876.2	357.8	13.9	4.1	1,252.0
	Dec.	285,137.5	78.5	287,685.7	876.2	357.8	13.9	4.1	1,252.0
2006	Jun.	135,585.4	78.5	138,529.4	1,240.4	360.9	13.2	3.9	1,618.4
	Dec.	275,004.4	78.5	277,722.9	1,240.4	360.9	13.2	3.9	1,618.4
2007	Jun.	108,830.3	78.5	111,921.1	1,320.9	400.1	15.0	4.4	1,740.3
	Dec.	272,714.7	78.5	275,523.6	1,608.1	400.1	15.0	4.4	2,027.5
2008	Jun.	456,070.5	78.5	458,871.9	1,989.2	400.1	15.0	4.4	2,408.6
2007	Jul.	147,968.7	78.5	151,025.7	1,320.9	400.1	15.0	4.4	1,740.3
	Aug.	101,905.4	78.5	104,929.3	1,350.2	400.1	15.0	4.4	1,769.7
	Sep.	126,378.0	78.5	129,323.4	1,515.3	400.1	15.0	4.4	1,934.7
	Oct.	109,520.9	78.5	112,419.0	1,515.3	400.1	15.0	4.4	1,934.7
	Nov.	135,786.1	78.5	138,650.2	1,609.0	400.1	15.0	4.4	2,028.4
	Dec.	272,714.7	78.5	275,523.6	1,608.1	400.1	15.0	4.4	2,027.5
2008	Jan.	241,585.2	78.5	244,372.9	1,725.9	400.1	15.0	4.4	2,144.9
	Feb.	301,714.8	78.5	304,480.1	1,941.4	400.1	15.0	4.4	2,360.8
	Mar.	340,453.3	78.5	343,192.2	2,039.2	400.1	15.0	4.4	2,458.6
	Apr.	360,330.1	78.5	363,041.0	1,968.7	400.1	15.0	4.4	2,388.1
	May.	484,616.5	78.5	487,281.4	1,989.2	400.1	15.0	4.4	2,408.6
	Jun.	456,070.5	78.5	458,871.9	1,989.2	400.1	15.0	4.4	2,408.6
	Jul.	507,737.1	78.5	510,507.4	2,124.7	446.5	16.0	4.5	2,591.9

1. Gold is valued at end financial year (June) on the basis of closing London Market Rate.

Source: Finance Department SBP

2. Approved Foreign Exchanges includes SDR held with IMF w.e.f June2004

3. Receivable from Reserve Bank of India.

2.7 Liabilities and Assets of the State Bank of Pakistan

Banking Department

(Million Rupees)

Last Saturday/ Last working day	L I A B I L I T I E S												
	L I A B I L I T I E S							D e p o s i t s					Total
	Capital Paid-up	Reserve Fund	Rural Credit Fund	Industrial Credit Fund	Export Credit Fund	Loans Guar- antee Fund	Housing Credit Fund	Federal Govt.	Provincial Govts.	Banks	Others		
2003 Dec.	100.0	5,414.5	2,600.0	1,600.0	1,500.0	900.0	4,700.0	23,879.4	30,664.6	145,224.3	282,551.3	482,319.6	
2004 Jun.	100.0	5,414.5	2,600.0	1,600.0	1,500.0	900.0	4,700.0	2,681.5	34,207.5	156,204.2	273,562.7	466,655.8	
Dec.	100.0	5,414.5	2,600.0	1,600.0	1,500.0	900.0	4,700.0	2,272.7	44,738.5	196,347.7	290,348.5	533,707.4	
2005 Jun.	100.0	5,414.5	2,600.0	1,600.0	1,500.0	900.0	4,700.0	47,286.1	45,632.0	196,302.3	273,550.2	562,770.6	
Dec.	100.0	15,414.5	2,600.0	1,600.0	1,500.0	900.0	4,700.0	86,850.0	58,127.1	207,749.7	273,412.8	626,139.6	
2006 Jun.	100.0	15,414.5	2,600.0	1,600.0	1,500.0	900.0	4,700.0	69,952.5	66,644.6	207,574.3	273,897.5	618,068.8	
Dec.	100.0	34,556.5	2,600.0	1,600.0	1,500.0	900.0	4,700.0	49,197.5	50,380.5	264,356.0	272,486.9	636,420.8	
2007 Jun.	100.0	55,838.8	2,600.0	1,600.0	1,500.0	900.0	4,700.0	72,131.9	62,565.7	305,168.6	273,718.3	713,584.5	
Dec.	100.0	64,978.6	2,600.0	1,600.0	1,500.0	900.0	4,700.0	34,481.4	22,104.5	256,759.3	277,267.5	590,612.7	
2008 Jun.	100.0	64,978.6	2,600.0	1,600.0	1,500.0	900.0	4,700.0	65,642.1	29,571.1	328,435.3	333,480.1	757,128.6	
2007 Jul.	100.0	55,838.8	2,600.0	1,600.0	1,500.0	900.0	4,700.0	44,950.5	43,849.0	282,375.6	273,792.2	644,967.3	
Aug.	100.0	55,838.8	2,600.0	1,600.0	1,500.0	900.0	4,700.0	48,616.3	49,689.2	272,718.8	273,949.0	644,973.3	
Sep.	100.0	55,838.8	2,600.0	1,600.0	1,500.0	900.0	4,700.0	24,169.2	73,953.0	280,010.3	277,320.0	655,452.5	
Oct.	100.0	64,978.6	2,600.0	1,600.0	1,500.0	900.0	4,700.0	24,402.2	35,138.2	276,034.3	275,259.3	610,834.0	
Nov.	100.0	64,978.6	2,600.0	1,600.0	1,500.0	900.0	4,700.0	19,087.0	32,864.2	292,144.9	277,745.8	621,841.9	
Dec.	100.0	64,978.6	2,600.0	1,600.0	1,500.0	900.0	4,700.0	34,481.4	22,104.5	256,759.3	277,267.5	590,612.7	
2008 Jan.	100.0	64,978.6	2,600.0	1,600.0	1,500.0	900.0	4,700.0	29,879.5	49,060.7	255,663.7	277,204.2	611,808.1	
Feb.	100.0	64,978.6	2,600.0	1,600.0	1,500.0	900.0	4,700.0	43,637.6	46,439.3	275,255.0	277,528.5	642,860.4	
Mar.	100.0	64,978.6	2,600.0	1,600.0	1,500.0	900.0	4,700.0	40,928.6	52,995.9	285,531.0	280,686.9	660,142.4	
Apr.	100.0	64,978.6	2,600.0	1,600.0	1,500.0	900.0	4,700.0	34,342.1	56,004.8	289,827.4	288,732.8	668,907.1	
May.	100.0	64,978.6	2,600.0	1,600.0	1,500.0	900.0	4,700.0	26,895.6	87,288.3	310,254.7	297,889.9	722,328.5	
Jun.	100.0	64,978.6	2,600.0	1,600.0	1,500.0	900.0	4,700.0	65,642.1	29,571.1	328,435.3	333,480.1	757,128.6	
Jul.	100.0	64,988.5	2,600.0	1,600.0	1,500.0	900.0	4,700.0	14,089.5	33,326.2	353,382.0	342,552.2	743,349.9	

2.7 Liabilities and Assets of the State Bank of Pakistan

Banking Department

(Million Rupees)

Last Saturday/ Last working day	LIABILITIES						Total Liabilities/ Assets	A S S E T S				
	Allocation of Special Drawing Rights	Bills Payable	Re- valuation Accounts	Other Liabi- lities	Bills Purchased and Discounted			Notes and Coins ¹	Export Sector	Others	Total	
					Internal							
2003	Dec.	1,526.0	143.0	38,883.2	33,967.6	573,653.9	125.8	3.6	33.4	37.0		
2004	Jun.	1,526.0	494.4	45,205.6	38,946.0	569,642.3	160.8	3.6	33.4	37.0		
	Dec.	1,526.0	251.0	45,205.6	57,064.6	654,569.0	126.0	3.6	33.4	37.0		
2005	Jun.	1,526.0	1,099.7	51,646.6	54,792.1	688,649.3	145.6	3.6	33.4	37.0		
	Dec.	1,526.0	118.5	51,646.6	87,784.8	794,029.9	156.6	3.6	33.4	37.0		
2006	Jun.	1,526.0	472.7	74,406.9	183,199.2	904,488.6	139.3	3.6	33.4	37.0		
	Dec.	1,526.0	152.8	74,406.9	112,684.2	871,147.1	140.9	3.6	33.4	37.0		
2007	Jun.	1,526.0	571.9	79,440.9	176,548.6	1,038,910.7	135.6	3.6	33.4	37.0		
	Dec.	1,526.0	493.5	97,408.6	124,938.3	891,357.7	187.7	3.6	33.4	37.0		
2008	Jun.	1,526.0	1,335.1	121,280.9	285,918.0	1,243,567.2	160.7	3.6	33.4	37.0		
2007	Jul.	1,526.0	462.4	79,440.9	150,315.9	943,951.2	190.2	3.6	33.4	37.0		
	Aug.	1,526.0	822.1	81,275.7	170,382.0	966,217.8	159.6	3.6	33.4	37.0		
	Sep.	1,526.0	309.8	91,596.6	89,539.7	905,663.4	193.1	3.6	33.4	37.0		
	Oct.	1,526.0	223.3	91,596.6	88,260.6	868,819.2	163.1	3.6	33.4	37.0		
	Nov.	1,526.0	437.2	97,464.2	125,088.7	922,736.6	195.2	3.6	33.4	37.0		
	Dec.	1,526.0	493.5	97,408.6	124,938.3	891,357.7	187.7	3.6	33.4	37.0		
2008	Jan.	1,526.0	165.5	104,759.6	155,020.6	949,658.4	126.0	3.6	33.4	37.0		
	Feb.	1,526.0	203.2	118,286.0	152,003.0	991,257.2	130.4	3.6	33.4	37.0		
	Mar.	1,526.0	271.6	124,412.7	213,788.8	1,076,520.2	183.1	3.6	33.4	37.0		
	Apr.	1,526.0	173.2	119,993.6	221,414.9	1,088,393.3	145.2	3.6	33.4	37.0		
	May.	1,526.0	150.9	121,280.9	230,109.8	1,151,774.7	165.5	3.6	33.4	37.0		
	Jun.	1,526.0	1,335.1	121,280.9	285,918.0	1,243,567.2	160.7	3.6	33.4	37.0		
	Jul.	1,526.0	159.4	129,768.3	229,537.7	1,180,729.8	110.5	3.6	33.4	37.0		

¹ Includes all coins of various denominations

(Contd.)

2.7 Liabilities and Assets of the State Bank of Pakistan Banking Department

(Million Rupees)

Last Saturday/ Last working day		A S S E T S								
		Balance held outside Pakistan	SDR held with IMF	Govt. Debtor Balances	Loans and Advances to Scheduled Banks					Total (a)
					Agri- cultural Sector	Indus- trial Sector	Export Sector	Housing Sector	Others	
2003	Dec.	104,834.5	14,136.1	319.3	55,353.1	2,563.9	77,303.2	66.9	13,992.6	149,279.7
2004	Jun.	132,021.4	-	5,533.1	58,005.3	2,328.8	88,292.3	66.9	13,194.5	161,887.8
	Dec.	147,057.8	2,284.8	7,241.5	60,737.4	1,169.4	102,522.5	-	9,179.9	173,609.2
2005	Jun.	139,513.0	1,774.6	10,814.0	59,753.3	1,498.5	109,446.9	-	11,288.6	181,987.3
	Dec.	167,964.8	1,370.3	14,503.1	63,627.6	3,066.9	106,386.3	-	13,102.5	186,183.4
2006	Jun.	121,824.0	1,088.6	16,404.3	62,194.7	7,297.3	107,982.2	-	16,104.3	193,578.5
	Dec.	128,433.7	758.6	6,560.1	63,183.5	41,382.5	131,733.6	-	14,416.2	250,715.8
2007	Jun.	152,719.3	418.5	10,820.4	62,228.2	42,149.7	134,621.3	-	14,420.1	253,419.3
	Dec.	151,435.5	314.0	23,628.8	57,776.5	40,386.3	100,060.1	-	14,232.1	212,455.0
2008	Jun.	143,807.9	3,349.9	23,141.4	49,777.3	39,465.3	100,963.9	-	14,233.9	204,440.4
2007	Jul.	190,034.2	421.6	12,125.6	58,228.2	41,605.6	137,866.5	-	14,420.1	252,120.4
	Aug.	160,347.1	394.3	12,715.6	58,192.1	41,088.5	120,836.8	-	14,420.1	234,537.5
	Sep.	183,923.8	367.3	11,562.7	57,955.9	40,014.7	100,461.2	-	14,232.1	212,663.9
	Oct.	141,161.4	370.0	13,306.2	57,955.9	39,625.8	100,159.6	-	14,232.1	211,973.4
	Nov.	142,185.0	319.4	14,347.2	57,856.0	40,094.4	100,582.4	-	14,232.1	212,764.8
	Dec.	151,435.5	314.0	23,628.8	57,776.5	40,386.3	100,060.1	-	14,232.1	212,455.0
2008	Jan.	136,422.8	103.2	16,287.2	57,777.3	39,724.9	97,606.1	-	14,233.9	209,342.2
	Feb.	140,671.2	83.4	17,270.9	49,777.3	39,593.4	97,357.4	-	14,233.9	200,962.0
	Mar.	150,526.5	58.0	17,434.2	49,777.5	40,624.3	94,889.2	-	14,233.9	199,524.9
	Apr.	137,422.3	60.6	18,030.9	49,777.3	39,854.8	98,264.3	-	14,233.9	202,130.3
	May.	166,984.4	26.0	15,480.9	49,777.3	40,009.4	100,215.2	-	14,233.9	204,235.8
	Jun.	143,807.9	3,349.9	23,141.4	49,777.3	39,465.3	100,963.9	-	14,233.9	204,440.4
	Jul.	161,285.3	3,249.0	24,468.8	57,778.0	38,579.5	98,860.2	-	14,235.8	209,453.5

2.7 Liabilities and Assets of the State Bank of Pakistan

Banking Department

(Concl.)
(Million Rupees)

Last Saturday/ Last working day	A S S E T S										
	Loans and Advances to Non-Bank Financial Institutions				Other Loans And Advances (a+b)	I n v e s t m e n t s					Other Assets
	Indus- trial Sector	Housing Sector	Others	Total (b)		Sche- duled Banks	Non-Bank Financial Institutions	Govt. Securities	Others	Total	
2003 Dec.	4,440.4	13,857.3	4,786.7	23,084.4	172,364.1	38,954.7	2,497.1	36,747.5	907.6	79,106.9	202,730.2
2004 Jun.	4,418.0	12,607.3	4,219.8	21,245.1	183,132.9	34,000.8	1,747.1	87,524.9	1,291.2	124,564.0	124,193.1
Dec.	608.1	12,607.3	3,416.7	16,632.1	190,241.3	34,000.8	1,747.1	149,989.0	1,331.2	187,068.1	120,512.6
2005 Jun.	595.0	11,242.3	3,416.7	15,254.0	197,241.4	28,273.8	1,673.4	168,392.0	933.5	199,272.6	139,850.8
Dec.	358.3	11,242.3	2,141.7	13,742.3	199,925.7	28,273.8	1,673.4	249,452.0	890.9	280,290.1	129,782.4
2006 Jun.	831.7	11,242.3	2,141.7	14,215.7	207,794.2	24,664.3	1,673.4	380,997.3	1,043.2	408,378.1	148,823.1
Dec.	2,832.0	11,242.3	2,071.7	16,146.0	266,861.8	25,104.3	1,673.4	292,215.7	1,029.5	320,022.9	148,332.1
2007 Jun.	2,831.3	11,242.3	-	14,073.6	267,492.9	18,058.5	2,113.4	351,843.9	1,051.0	373,066.8	234,220.1
Dec.	2,784.4	11,242.3	-	14,026.7	226,481.7	15,568.9	3,313.4	299,369.8	1,126.0	319,378.0	169,895.0
2008 Jun.	1,409.2	11,242.3	-	12,651.5	217,091.9	15,568.7	3,813.4	586,497.2	1,049.5	606,928.8	249,049.6
2007 Jul.	2,818.7	11,242.3	-	14,061	266,181.4	17,067.6	2,113.4	261,352.2	1,051.0	281,584.2	193,377.2
Aug.	2,704.0	11,242.3	-	13,946.3	248,483.8	17,467.6	2,113.4	345,222.4	1,051.0	365,854.4	178,226.0
Sep.	2,620.1	11,242.3	-	13,862.4	226,526.3	17,067.6	2,513.4	288,071.6	1,051.0	308,703.6	174,349.6
Oct.	2,598.5	11,242.3	-	13,840.8	225,814.2	17,067.6	2,513.4	295,887.4	1,051.0	316,519.4	171,447.9
Nov.	2,731.7	11,242.3	-	13,974.0	226,738.8	15,568.9	2,513.4	359,625.6	1,051.0	378,758.8	160,155.4
Dec.	2,784.4	11,242.3	-	14,026.7	226,481.7	15,568.9	3,313.4	299,369.8	1,126.0	319,378.0	169,895.0
2008 Jan.	2,735.4	11,242.3	-	13,977.7	223,319.9	16,068.9	3,313.4	396,402.4	1,126.0	416,910.6	156,451.8
Feb.	2,926.6	11,242.3	-	14,168.9	215,130.9	16,068.8	3,313.4	439,709.3	1,126.0	460,217.5	157,716.0
Mar.	1,332.2	11,242.3	-	12,574.5	212,099.4	15,568.9	3,813.4	482,455.5	1,049.5	502,887.2	193,295.0
Apr.	1,345.3	11,242.3	-	12,587.6	214,717.9	15,568.9	3,813.4	533,924.4	1,049.5	554,356.2	163,623.0
May.	1,413.5	11,242.3	-	12,655.8	216,891.6	15,568.7	3,813.4	513,477.4	1,049.4	533,909.0	218,280.4
Jun.	1,409.2	11,242.3	-	12,651.5	217,091.9	15,568.7	3,813.4	586,497.2	1,049.5	606,928.8	249,049.6
Jul.	1,407.8	11,242.3	-	12,650.1	222,103.6	15,568.7	3,813.4	571,732.0	1,068.4	592,182.4	177,293.1

Source: Finance Department SBP

2.8 Scheduled Bank's Consolidated Position

Based on weekly position Liabilities & Assets (All Banks)

(Million Rupees)

Financial Position	2006		2007	2007				2008
	Jun.	Dec.	Jun.	Sep.	Oct.	Nov.	Dec.	Jan.
ASSETS								
Cash & Balances With Treasury Banks	273,896	332,452	397,352	356,764	347,539	361,142	343,718	329,250
Balances With Other Banks	120,345	140,575	200,104	160,422	144,473	126,514	134,651	113,601
Lending To Financial Institutions	226,451	192,343	269,120	188,512	195,366	225,555	213,872	204,691
Investments - Net	794,584	775,546	1,115,913	1,245,411	1,243,254	1,213,543	1,210,920	1,201,526
Advances – Net of Provision	2,005,658	2,281,866	2,350,810	2,316,858	2,345,740	2,397,616	2,505,900	2,518,078
Gross Advances	2,127,388	2,409,478	2,484,495	2,450,713	2,482,220	2,535,759	2,651,173	2,684,089
Less: Provision for Non- Performing Advances	121,730	127,611	133,686	133,855	136,480	138,143	145,272	166,011
Operating Fixed Assets	72,659	107,745	127,031	131,227	134,079	135,916	146,135	176,424
Deferred Tax Assets	6,760	7,988	8,144	5,789	5,886	9,360	10,849	16,287
Other Assets	172,644	217,731	233,167	255,414	238,769	238,749	262,530	258,524
TOTAL ASSETS	3,672,997	4,056,246	4,701,641	4,660,397	4,655,106	4,708,395	4,828,576	4,818,381
LIABILITIES								
Bills Payable	47,282	55,177	56,992	63,870	59,748	59,777	69,242	61,888
Borrowings	361,080	420,080	497,065	394,459	405,156	432,859	439,335	427,231
Deposits and Other Accounts	2,786,731	2,999,895	3,460,811	3,464,687	3,451,075	3,478,385	3,565,537	3,574,788
Sub-ordinated Loans	21,721	26,967	27,488	26,790	26,790	27,539	27,171	27,171
Liabilities Against Assets Subject to Finance Lease	740	898	1,068	978	972	947	886	867
Other Liabilities	133,514	150,308	165,221	192,364	188,495	181,073	175,317	169,870
Deferred Tax Liabilities	8,554	7,357	8,700	10,642	10,637	9,496	9,921	10,246
TOTAL LIABILITIES	3,359,621	3,660,683	4,217,345	4,153,789	4,142,872	4,190,075	4,287,409	4,272,060
NET ASSETS	313,376	395,563	484,296	506,607	512,234	518,320	541,167	546,321
REPRESENTED BY:								
Paid up Capital / Head Office Capital Account	119,860	165,477	205,895	223,103	224,163	225,815	228,874	236,847
Reserves	89,780	102,928	129,050	104,591	104,056	107,643	108,921	116,624
Unappropriated / Unremitted Profit	33,428	63,520	68,707	107,071	107,377	108,608	115,538	109,376
Surplus/ (Deficit) On Revaluation Of Assets	70,308	63,638	80,645	71,843	76,638	76,254	87,835	83,474
TOTAL	313,376	395,563	484,296	506,607	512,234	518,320	541,167	546,321

Format of weekly statement of position has been redesigned from the month of July 05.

2.8 Scheduled Bank's Consolidated Position

Based on weekly position Liabilities & Assets (All Banks)

(Million Rupees)

Financial Position	2008							
	Feb.	Mar.	Apr.	May.	Jun.	Jul.	Aug.	Sep.
ASSETS								
Cash & Balances With Treasury Banks	354,345	366,313	374,557	403,802	418,933	432,181	437,760	466,893
Balances With Other Banks	114,317	124,899	113,389	110,084	175,322	175,316	152,502	159,102
Lending To Financial Institutions	218,375	244,966	228,993	208,879	222,891	172,479	202,109	180,911
Investments - Net	1,163,455	1,107,028	1,060,154	975,761	1,007,529	1,060,396	1,030,846	930,875
Advances – Net of Provision	2,562,216	2,635,298	2,689,720	2,781,618	2,759,886	2,663,071	2,707,918	2,831,945
Gross Advances	2,734,642	2,812,732	2,870,619	2,964,509	2,943,319	2,848,844	2,899,138	3,027,122
Less: Provision for Non-Performing Advances	172,426	177,435	180,899	182,890	183,433	185,773	191,220	195,177
Operating Fixed Assets	182,468	183,539	199,810	200,529	202,262	209,625	209,059	211,751
Deferred Tax Assets	15,246	16,341	16,920	17,289	17,696	19,016	21,132	20,999
Other Assets	251,966	261,662	257,687	287,678	269,879	260,913	314,973	305,841
TOTAL ASSETS	4,862,389	4,940,045	4,941,230	4,985,640	5,074,397	4,992,997	5,076,298	5,108,316
LIABILITIES								
Bills Payable	56,169	63,154	57,618	58,440	64,752	57,197	76,053	70,969
Borrowings	447,042	456,102	428,801	433,961	389,585	364,722	377,992	434,061
Deposits and Other Accounts	3,591,861	3,628,142	3,650,050	3,696,208	3,832,454	3,777,585	3,788,611	3,781,524
Sub-ordinated Loans	29,790	37,582	41,506	41,608	41,169	40,630	40,892	40,975
Liabilities Against Assets Subject to Finance Lease	864	793	762	724	711	706	637	606
Other Liabilities	173,316	194,285	181,720	189,922	184,355	179,826	213,818	211,326
Deferred Tax Liabilities	11,694	12,360	14,407	13,605	13,568	12,963	12,906	12,336
TOTAL LIABILITIES	4,310,737	4,392,418	4,374,863	4,434,469	4,526,592	4,433,628	4,510,909	4,551,798
NET ASSETS	551,652	547,626	566,367	551,172	547,805	559,369	565,389	556,518
REPRESENTED BY:								
Paid up Capital / Head Office Capital Account	239,387	246,379	249,963	253,859	253,859	257,911	266,394	266,394
Reserves	118,207	130,699	131,606	127,971	127,816	129,263	136,219	136,258
Unappropriated / Unremitted Profit	111,059	89,138	91,304	94,396	92,790	107,654	109,327	100,569
Surplus/ (Deficit) On Revaluation Of Assets	82,999	81,410	93,493	74,944	73,339	64,540	53,449	53,298
TOTAL	551,652	547,626	566,367	551,172	547,805	559,369	565,389	556,518

Source: Finance Department SBP

2.9 Scheduled Banks' Liquidity Position

All Banks¹

(Million Rupees)

Last Saturday		LIQUID LIABILITIES IN PAKISTAN			LIQUID ASSETS MAINTAINED IN PAKISTAN			
		Demand Liabilities	Time Liabilities	Total	Cash in Pakistan	Balance With SBP	Balance With Agents of SBP	Unencumbered Approved Securities ²
2003	Dec.	917,242	906,630	1,823,872	33,682	122,610	3,661	532,752
2004	Jun.	958,869	965,782	1,924,652	33,908	162,595	4,689	484,641
	Dec.	1,062,884	995,135	2,058,019	39,440	126,506	4,186	408,263
2005	Jun.	1,131,465	1,138,439	2,269,904	42,461	120,668	5,621	529,035
	Dec.	1,289,884	1,244,768	2,534,652	50,145	146,530	15,173	515,681
2006	Jun.	1,281,332	1,421,594	2,702,926	55,454	159,210	7,529	567,416
	Dec.	2,314,909	693,303	3,008,212	61,755	215,476	16,473	567,984
2007	Jun.	2,837,195	566,181	3,403,376	76,609	253,059	24,369	821,057
	Dec.	3,009,848	476,569	3,486,417	85,334	223,426	11,605	812,343
2008	Jun.	3,163,881	610,127	3,774,008	75,314	304,179	17,121	761,174
	Aug.	2,910,754	428,109	3,338,863	69,694	219,393	7,591	923,543
2007	Sep.	2,988,730	451,468	3,440,198	73,539	234,889	10,296	873,481
	Oct.	2,905,357	436,512	3,341,869	69,803	222,413	8,467	860,554
	Nov.	2,909,956	463,566	3,373,522	69,645	238,143	8,609	840,197
	Dec.	3,009,848	476,569	3,486,417	85,334	223,426	11,605	812,343
2008	Jan.	2,987,951	495,691	3,483,642	71,209	221,509	9,019	839,135
	Feb.	2,996,277	513,613	3,509,890	67,038	249,753	8,359	792,137
	Mar.	3,014,867	541,722	3,556,589	65,052	260,815	9,361	761,002
	Apr.	3,007,245	558,280	3,565,525	66,793	265,356	9,793	731,904
	May.	3,041,693	567,121	3,608,814	71,994	281,310	14,564	661,869
	Jun.	3,163,881	610,127	3,774,008	75,314	304,179	17,121	761,174
	Jul.	3,051,562	605,236	3,656,798	72,171	290,295	10,064	789,307
	Aug.	3,093,817	613,923	3,707,740	75,271	285,137	11,599	759,058

2.9 Scheduled Banks' Liquidity Position

All Banks¹

(Million Rupees)

Last Saturday	LIQUID ASSETS MAINTAINED IN PAKISTAN						Minimum of Assets required to be held under Section 29 of the Banking Companies Ordinance	Excess of Assets being held over the minimum required under Section 29 of the Banking Companies Ordinance
	Foreign Banks Deposits with SBP under section 13(3) of the Banking Companies Ordinance			Share Capital M F B	Total			
	Cash	Unencumbered Approved Securities ²	Foreign Currency					
2003 Dec.	560	327	18,799	1,705	714,096	364,774	349,322	
2004 Jun.	190	3,601	10,341	1,705	701,670	382,784	318,886	
2004 Dec.	60	129	14,280	1,705	594,569	408,376	186,193	
2005 Jun.	60	4,239	15,919	1,675	719,678	450,694	268,984	
2005 Dec.	156	4,020	17,660	1,705	751,070	503,471	247,599	
2006 Jun.	156	4,014	19,172	1,705	814,656	537,716	276,940	
2006 Dec.	156	3,981	13,524	1,685	881,034	719,116	161,918	
2007 Jun.	0	727	13,397	1,655	1,190,873	821,095	369,778	
2007 Dec.	0	0	10,867	1,658	1,145,233	828,870	316,363	
2008 Jun.	0	0	12,651	1,658	1,172,097	990,894	181,203	
2007 Aug.	0	0	13,395	1,655	1,235,271	809,375	425,896	
2007 Sep.	0	0	10,867	1,658	1,204,730	833,296	371,434	
2007 Oct.	0	0	10,867	1,658	1,173,762	796,205	377,557	
2007 Nov.	0	0	10,867	1,658	1,169,119	802,235	366,884	
2007 Dec.	0	0	10,867	1,658	1,145,233	828,870	316,363	
2008 Jan.	0	0	11,318	1,658	1,153,848	826,986	326,862	
2008 Feb.	0	0	11,318	1,658	1,130,264	862,262	268,002	
2008 Mar.	0	0	11,330	1,658	1,109,218	871,631	237,587	
2008 Apr.	0	0	12,651	1,658	1,088,155	872,226	215,929	
2008 May.	0	0	12,651	1,658	1,044,046	948,559	95,487	
2008 Jun.	0	0	12,651	1,658	1,172,097	990,894	181,203	
2008 Jul.	0	0	12,702	1,658	1,176,197	958,489	211,451	
2008 Aug.	0	0	12,702	1,658	1,145,425	971,664	173,761	

1 Excluding Indian Banks

Source: Off-Site Supervision Enforcement Department SBP

2 Valued at a price not exceeding current market price

Note : Figures of Demand and Time Liabilities of Scheduled Banks shown in this table may not tally with the corresponding provisional figures appearing in the table 2.7

MFB : Macro Finance Bank (Khushali Bank)

2.10 NBFCs Consolidated Financial Position

(Million Rupees)

Assets/ Liabilities	Sep-07 ^P			Dec-07 ^P		
	DFIs	NBFCs	Total	DFIs	NBFCs	Total
1. Currency and Deposits	13,981	84,792	98,773	20,117	80,371	100,488
a. Currency	52	1,275	1,327	-	2,630	2,630
b. Transferable Deposits	3,266	60,496	63,762	4,467	52,361	56,828
c. Restricted Deposits	208	3,349	3,557	74	3,981	4,055
d. Other Deposits	10,455	19,672	30,127	15,576	21,399	36,975
2. Investment in securities other than shares	14,400	36,001	50,401	16,121	48,645	64,766
a. Short-term	2,121	6,810	8,931	2,760	10,093	12,853
b. Long-term	12,279	29,191	41,470	13,361	38,552	51,913
3. Loans extended (Advances)	64,426	141,949	206,375	48,108	141,793	189,901
a. Short-term	16,783	58,981	75,764	17,303	53,710	71,013
b. Long-term	47,643	82,968	130,611	30,805	88,083	118,888
4. Investment in shares	32,978	179,360	212,338	23,524	198,120	221,644
a. Quoted	28,515	175,718	204,233	21,769	194,767	216,536
b. Non quoted	4,463	3,642	8,105	1,755	3,353	5,108
5. Insurance Technical Reserve	-	-	-	-	-	-
a. Life	-	-	-	-	-	-
b. Non-life	-	-	-	-	-	-
6. Financial Derivatives	-	1,452	1,452	-	1,032	1,032
7. Other accounts receivable	3,495	24,962	28,457	4,101	32,930	37,031
8. Non-financial assets	3,559	10,170	13,729	2,981	13,608	16,589
a. Produced assets	3,540	6,263	9,803	2,754	7,092	9,846
i. Fixed assets	3,540	5,761	9,301	2,754	6,450	9,204
ii. Inventories	-	79	79	-	139	139
iii. Valuables	-	-	-	-	-	-
iv. Other produced assets	-	423	423	-	503	503
b. Non-produced assets	19	3,907	3,926	227	6,516	6,743
i. Land	19	2,766	2,785	227	3,013	3,240
ii. Other-non-produced assets	-	1,141	1,141	-	3,503	3,503
Total Assets/ Liabilities	132,839	478,687	611,526	114,952	516,499	631,451
1. Deposits	25,220	30,035	55,255	15,597	31,533	47,130
a. Restricted deposits	1,207	13,324	14,531	200	11,964	12,164
b. Other deposits	24,013	16,711	40,724	15,397	19,569	34,966
2. Securities other than shares (bonds/debentures etc)	5,083	11,175	16,258	5,083	11,927	17,010
a. Short-term	333	1,685	2,018	333	3,046	3,379
b. long-term	4,750	9,490	14,240	4,750	8,881	13,631
3. Loans (Borrowings)	47,828	57,088	104,916	42,663	62,290	104,953
a. Short-term	26,483	25,638	52,121	21,466	31,781	53,247
b. Long-term	21,345	31,450	52,795	21,197	30,509	51,706
4. Financial Derivatives	-	961	961	-	775	775
5. Other accounts payable	8,521	40,013	48,534	6,973	42,431	49,404
6. Shares and other equity	46,187	339,414	385,601	44,636	367,543	412,179
a. Quoted	5,653	204,845	210,498	2,000	207,486	209,486
b. Non quoted	20,892	36,416	57,308	25,993	40,803	66,796
c. Retained earnings	3,557	58,794	62,351	3,971	60,229	64,200
d. Current year result	1,231	3,665	4,896	1,959	17,594	19,553
e. General and special reserves	11,012	29,662	40,674	7,786	36,376	44,162
f. Valuation adjustments	3,842	6,032	9,874	2,927	5,055	7,982

2.10 NBFCs Consolidated Financial Position

(Million Rupees)

Assets/ Liabilities	Mar-08 ^P			Jun-08 ^P		
	DFIs	NBFCs	Total	DFIs	NBFCs	Total
1. Currency and Deposits	23,072	81,827	104,899	22,657	83,329	105,986
a. Currency	-	815	815	-	1,139	1,139
b. Transferable Deposits	12,359	55,658	68,017	5,068	51,053	56,121
c. Restricted Deposits	90	3,146	3,236	125	3,864	3,989
d. Other Deposits	10,623	22,208	32,831	17,464	27,273	44,737
2. Investment in securities other than shares	21,368	54,365	75,733	22,614	59,667	82,281
a. Short-term	7,047	9,250	16,297	8,591	6,015	14,606
b. Long-term	14,321	45,115	59,436	14,023	53,652	67,675
3. Loans extended (Advances)	47,315	136,583	183,898	44,075	133,249	177,324
a. Short-term	14,844	54,915	69,759	14,137	48,981	63,118
b. Long-term	32,471	81,668	114,139	29,938	84,268	114,206
4. Investment in shares	21,540	215,380	236,920	16,189	185,551	201,740
a. Quoted	19,778	212,195	231,973	14,255	182,615	196,870
b. Non quoted	1,762	3,185	4,947	1,934	2,936	4,870
5. Insurance Technical Reserve	-	-	-	-	-	-
a. Life	-	-	-	-	-	-
b. Non-life	-	-	-	-	-	-
6. Financial Derivatives	-	238	238	-	187	187
7. Other accounts receivable	3,846	31,077	34,923	4,438	30,323	34,761
8. Non-financial assets	3,001	14,683	17,684	3,031	13,004	16,035
a. Produced assets	2,885	7,831	10,716	2,912	7,877	10,789
i. Fixed assets	2,885	7,168	10,053	2,912	7,312	10,224
ii. Inventories	-	153	153	-	172	172
iii. Valuables	-	-	-	-	-	-
iv. Other produced assets	-	510	510	-	393	393
b. Non-produced assets	116	6,852	6,968	119	5,127	5,246
i. Land	115	2,979	3,094	119	1,019	1,138
ii. Other-non-produced assets	1	3,873	3,874	-	4,108	4,108
Total Assets/ Liabilities	120,142	534,153	654,295	113,006	505,310	618,316
1. Deposits	13,277	30,542	43,819	13,304	34,859	48,163
a. Restricted deposits	202	10,586	10,788	206	11,792	11,998
b. Other deposits	13,075	19,956	33,031	13,098	23,067	36,165
2. Securities other than shares (bonds/debentures etc)	4,917	16,110	21,027	3,417	17,076	20,493
a. Short-term	167	2,673	2,840	167	3,082	3,249
b. long-term	4,750	13,437	18,187	3,250	13,994	17,244
3. Loans (Borrowings)	39,592	53,756	93,348	42,632	57,030	99,662
a. Short-term	19,748	24,855	44,603	20,363	27,362	47,725
b. Long-term	19,844	28,901	48,745	22,269	29,668	51,937
4. Financial Derivatives	-	-63	-63	-	-75	-75
5. Other accounts payable	8,663	42,434	51,097	10,209	39,504	49,713
6. Shares and other equity	53,693	391,374	445,067	43,445	356,916	400,361
a. Quoted	2,000	217,202	219,202	2,000	183,646	185,646
b. Non quoted	31,293	44,542	75,835	31,293	68,410	99,703
c. Retained earnings	3,608	63,773	67,381	-4,694	58,567	53,873
d. Current year result	6,237	20,096	26,333	6,453	9,326	15,779
e. General and special reserves	8,461	38,103	46,564	9,097	33,031	42,128
f. Valuation adjustments	2,094	7,658	9,752	-704	3,936	3,232

NBFCs Non Bank Financial Companies
DFIs Development Finance Institutions

2.11 Classification of Deposits with NBFCs

(Million Rupees)

Sector	March-08 ^P			Jun-08 ^P		
	Depository	Non-Depository	Total	Depository	Non-Depository	Total
1 Non-financial Corporations	14,039	277	14,316	14,548	322	14,870
i Public	1,914	84	1,998	1,985	92	2,077
ii Private	12,125	193	12,318	12,563	230	12,793
2 Financial Corporations	22,839	55	22,894	22,624	872	23,496
i Central Bank	-	-	-	-	-	-
ii Deposit money institutions	19,077	55	19,132	18,239	54	18,293
ii Other deposit accepting institutions	913	-	913	630	818	1,448
iv Financial intermediaries	1,785	-	1,785	2,525	-	2,525
v Financial auxiliaries	146	-	146	116	-	116
vi Insurance and pension funds	918	-	918	1,114	-	1,114
3 Central Government	803	-	803	2,808	-	2,808
4 Provincial Governments	24	-	24	24	-	24
5 Local Governments	-	-	-	-	-	-
6 Household	5,490	5	5,495	6,925	5	6,930
7 Non-profit Institutions (NPIs) Serving Households	282	-	282	13	-	13
8 Non-residents	5	-	5	5	-	5
9 Foreign Currency	-	-	-	17	-	17
Total	43,482	337	43,819	46,964	1,199	48,163

2.12 Classification of NBFC's Loans Extended(Advances)

(Million Rupees)

Sector	March-08 ^P			Jun-08 ^P		
	Depository	Non-Depository	Total	Depository	Non-Depository	Total
1 Non-financial corporations	78,178	9,066	87,244	78,861	9,313	88,174
i Public	904	280	1,184	873	381	1,254
ii Private	77,274	8,786	86,060	77,988	8,932	86,920
2 Financial Corporations	15,113	35,761	50,874	15,008	28,359	43,367
i Central Bank	-	-	-	-	-	-
ii Deposit money institutions	5,135	3,819	8,954	3,308	3,801	7,109
ii Other deposit accepting institutions	7,163	3,760	10,923	6,853	5,426	12,279
iv Financial intermediaries	1,234	4,564	5,798	1,152	4,286	5,438
v Financial auxiliaries	1,543	23,614	25,157	3,665	14,841	18,506
vi Insurance and pension funds	38	4	42	30	5	35
3 Central Government	-	-	-	-	-	-
4 Provincial Governments	-	-	-	-	-	-
5 Local Governments	-	-	-	-	-	-
6 Household	12,806	12,627	25,433	13,082	11,375	24,457
7 Non-profit Institutions (NPIs) Serving Households	19	-	19	19	-	19
8 Non-Residents	-	-	-	-	-	-
9 Bills purchased and discounted (inland bills)	-	85	85	-	33	33
10 Other Advances and Financial Leases	10,952	9,291	20,243	11,226	10,048	21,274
Total	117,068	66,830	183,898	118,196	59,128	177,324

2.13 Classification of NBFC's Investments in Securities and Shares

(Million Rupees)

Securities/Shares	March-08 ^P			Jun-08 ^P		
	Depository	Non- Depository	Total	Depository	Non- Depository	Total
A. Securities	28,492	47,241	75,733	28,729	53,552	82,281
1 Non-financial Corporations	14,376	29,948	44,324	13,176	35,809	48,985
i Public	5,694	5,351	11,045	4,797	6,121	10,918
ii Private	8,682	24,597	33,279	8,379	29,688	38,067
2 Financial Corporations	4,403	13,713	18,116	5,481	14,144	19,625
i Central Bank	-	-	-	-	-	-
ii Deposit money institutions	2,500	7,158	9,658	3,651	8,219	11,870
ii Other deposit accepting institutions	1,221	2,001	3,222	1,521	2,508	4,029
iv Financial intermediaries	682	4,554	5,236	309	3,417	3,726
v Financial auxiliaries	-	-	-	-	-	-
vi Insurance and pension funds	-	-	-	-	-	-
3 Central Government	9,569	3,540	13,109	9,925	3,484	13,409
4 Provincial Governments	-	-	-	-	-	-
5 Local Governments	-	-	-	-	-	-
6 Household	-	-	-	-	-	-
7 Non-profit institutions (NPIs) Serving Households	-	-	-	-	-	-
8 Non-Residents	-	-	-	-	-	-
9 Foreign Currency	144	40	184	148	115	263
B. Shares	33,665	203,256	236,921	25,838	175,901	201,739
1 Non-financial Corporations	23,056	178,543	201,599	15,480	155,390	170,870
i Public	6,913	149,886	156,799	5,129	131,340	136,469
ii Private	16,143	28,657	44,800	10,351	24,050	34,401
2 Financial Corporations	10,237	24,570	34,807	10,010	20,252	30,262
i Central Bank	-	-	-	-	-	-
ii Deposit money institutions	5,057	9,700	14,757	4,492	5,896	10,388
ii Other deposit accepting institutions	1,932	2,956	4,888	2,441	2,723	5,164
iv Financial intermediaries	2,752	9,392	12,144	2,562	10,227	12,789
v Financial auxiliaries	115	38	153	150	4	154
vi Insurance and pension funds	381	2,484	2,865	365	1,402	1,767
3 Central Government	-	-	-	-	-	-
4 Provincial Governments	-	-	-	-	-	-
5 Local Governments	-	-	-	-	-	-
6 Household	-	-	-	-	-	-
7 Non-profit institutions (NPIs) Serving Households	-	-	-	-	-	-
8 Non-residents	372	143	515	348	259	607
Total (A+B)	62,157	250,497	312,654	54,567	229,453	284,020

2.14 Currency in Circulation

(Million Rupees)

END OF PERIOD	Subsidiary Coins	One Rupee Coins and above	Five Rupee Bills & above	Total (1+2+3)	Held by Banking Department of SBP	Held by Issue Department of SBP	Currency In tills of Scheduled Banks	Currency In Circulation (4-5-6-7)
		1	2		3	4	5	
2003 Dec.	662	4,405	595,285	600,352	126	2,435	30,273	567,517
2004 Jun.	664	4,941	611,904	617,508	161	2,799	36,432	578,116
Dec.	667	5,574	691,072	697,313	126	3,068	38,836	655,283
2005 Jun.	667	6,093	705,720	712,480	146	2,961	43,472	665,901
Dec.	667	6,618	769,617	776,902	157	2,470	42,527	731,749
2006 Jun.	667	6,931	784,236	791,834	139	2,865	48,439	740,391
Dec.	667	6,933	917,809	925,408	141	2,640	48,367	874,260
2007 Jun.	667	7,441	893,293	901,401	136	3,012	58,072	840,181
Dec.	667	7,461	1,070,960	1,079,088	156	2,730	68,371	1,007,831
2008 Jun. ^P	667	7,667	1,045,857	1,054,191	182	2,718	68,966	982,325
2007 Sep.	667	7,499	927,990	936,156	193	2,867	58,176	874,919
Oct.	667	7,469	969,842	977,978	163	2,820	57,405	917,590
Nov.	667	7,501	992,576	1,000,744	195	2,786	55,132	942,631
Dec.	667	7,461	1,070,960	1,079,088	156	2,730	68,371	1,007,831
2008 Jan.	667	7,432	1,040,269	1,048,368	126	2,709	56,288	989,245
Feb.	667	7,428	1,050,242	1,058,337	130	2,687	54,429	1,001,090
Mar.	667	7,501	1,040,450	1,048,617	196	2,659	63,761	982,001
Apr.	667	7,457	1,044,473	1,052,596	146	2,632	56,757	993,061
May.	667	7,471	1,051,807	1,059,944	166	2,586	59,380	997,813
Jun. ^P	667	7,667	1,045,857	1,054,191	182	2,718	68,966	982,325
Jul. ^P	665	7,129	1,065,303	1,073,097	110	2,692	59,907	1,010,388
Aug. ^P	665	7,646	1,070,325	1,078,636	161	2,665	57,930	1,017,880
Sep. ^P	665	7,653	1,168,082	1,176,401	168	2,629	66,255	1,107,349

Note The quarter end data relate to last working day whereas monthly data are of last Saturday of the month . Source: Statistics & DWH.Department.SBP
Totals may not tally due to separate rounding off

2.15 Government Budgetary Borrowing from Banks

(Million Rupees)

Item	Stocks		Monetary Impact During	
	30-Jun-07	30-Jun-06	Ist July 07 to 31 st May, 2008	Ist July 07 to 2 nd Jun. 2007
1. Central Government (a+b)	1,014,152	875,718	406,459	164,380
a. Scheduled Banks	617,528	422,156	-175,870	188,080
T-Bills and Securities	830,347	589,552	-151,648	213,969
Less:				
Government Deposits	212,819	167,396	24,222	25,889
b. State Bank	396,624	453,563	582,329	-23,701
T-bills and Securities etc.	461,619	517,507	537,418	-2,389
Debtor Balances (Excluding Zakat Fund)	0	0	0	0
Less:				
Government Deposits (Excluding Zakat and Privatization Fund)	78,430	76,865	-44,911	21,681
Others	-13,435	-12,921	0	-369
2. Provincial Governments (c+d)	-204,099	-167,681	-41,950	-31,570
c. Scheduled Banks	-152,466	-117,684	-22,200	-28,806
Government and Others	1,100	1,101	0	-1
Less:				
Government Deposits	153,566	118,785	22,200	28,805
d. State Bank	-51,633	-49,997	-19,750	-2,793
Government Securities	0	0	0	0
Debtor Balances (Excluding Zakat Fund)	10,821	16,404	4,660	-9,754
Less:				
Government Deposits (Excluding Zakat Fund)	62,454	66,401	24,410	-6,990
Net Budgetary Borrowing from the Banking System	810,053	708,037	364,509	132,810

Source: Monetary Policy Department, SBP

2.16 Government Borrowing for Commodity Operations

(Million Rupees)

Commodity	Stocks		Monetary Impact During	
	30-Jun-08	30-Jun-07	Ist July 07 to 30 st Sep. 2008	Ist July 07 to 30 th Sep. 2007
Rice	0	2,224	60	-2,179
Wheat	86,079	62,049	-2,275	-4,895
Sugar	29,817	25,285	-6,913	-1,881
Fertilizer	7,243	6,227	-4,668	8
Seeds	161	95	69	-34
Oilseeds	0	0	0	0
Pulses	2,654	106	1,872	19
Edible Oil	10	1,266	85	-1,166
Black Mash	0	57	0	-49
Chillies	0	0	0	0
S. Meal	0	27	0	-27
Gram	0	0	-2,654	2,222
Onion	0	50	0	-50
Potatoes	0	0	0	0
Cotton	1,239	1,166	-258	-17
Total	127,203	98,552	-14,682	-8,050

Source: Monetary Policy Department, SBP