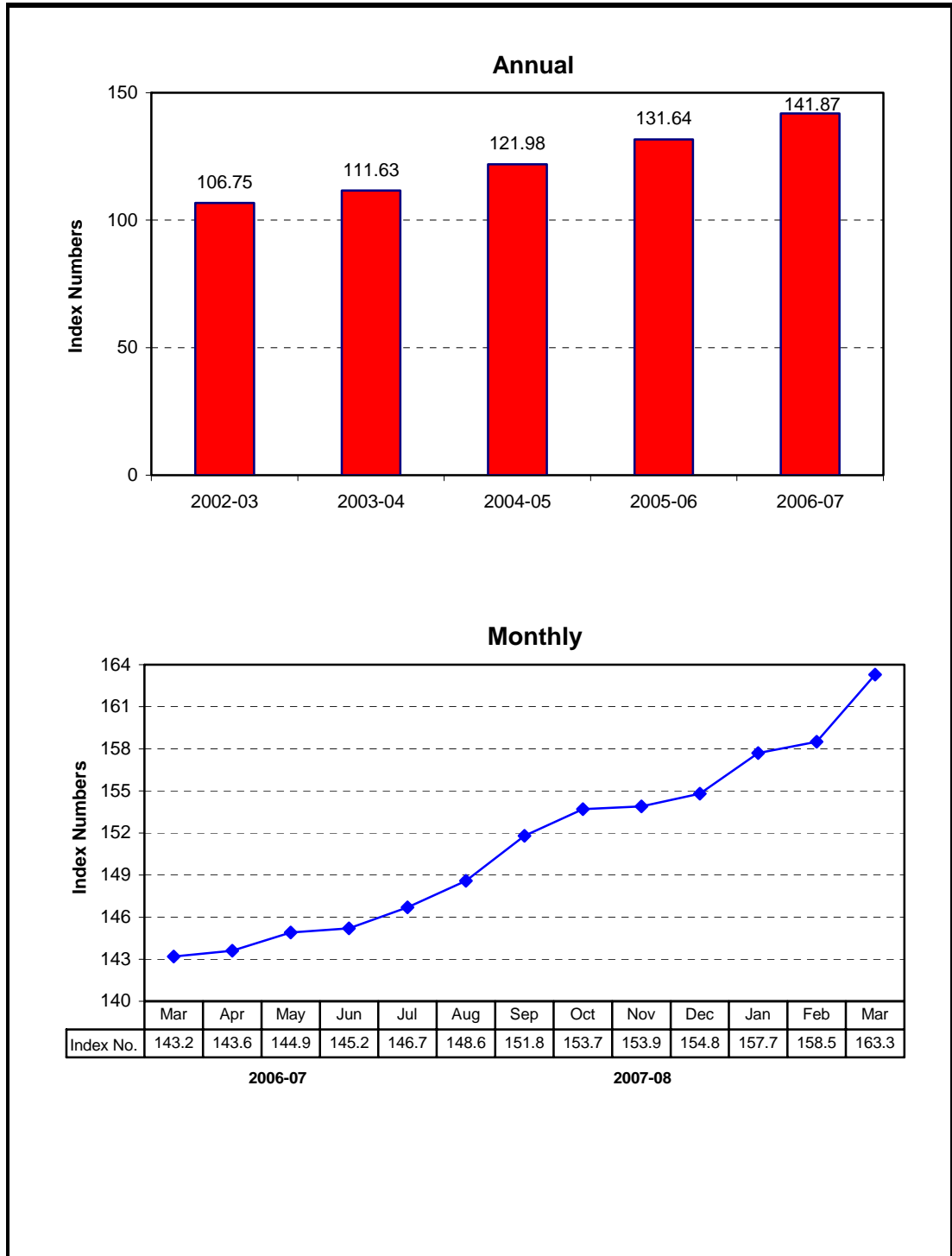


8.1 Combined Consumer Price Index Numbers by Commodity Groups - All Urban (2000-01=100)

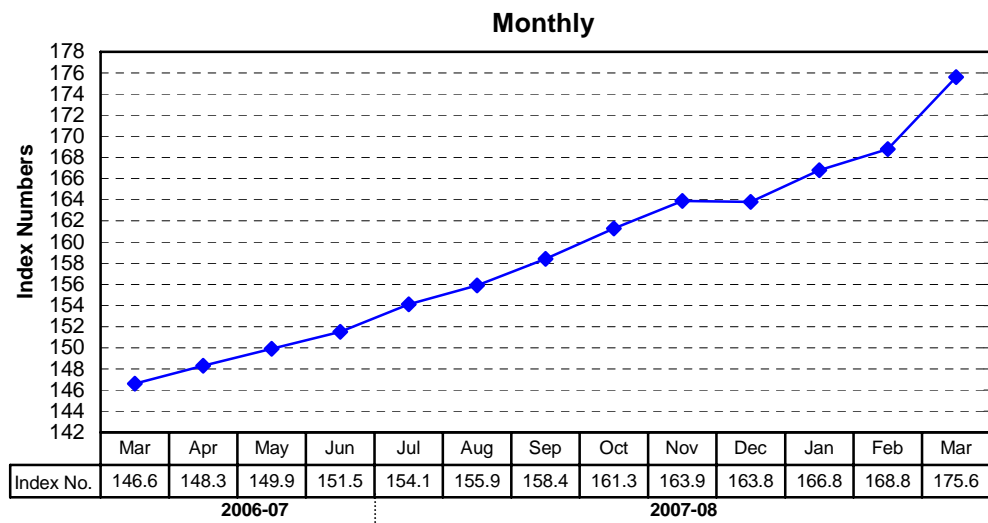
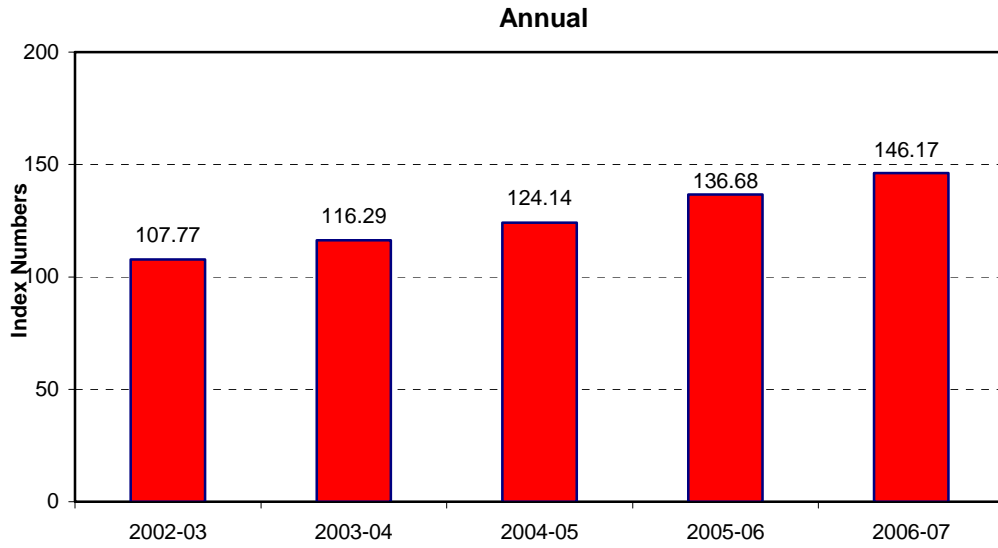
Year / Month	General	Food	Apparel	House	Fuel	Household	Transpor-	Recreation	Education	Cleaning	Medicare
		Beverages and Tobacco	Textile and Footwear		and Lighting	Furniture and Equipment	tation and Communi- cation	Entertain- ment & Education		Laundry and Personal Appearance	
2002-03	106.75	105.40	106.78	103.54	117.81	106.90	111.60	107.21	109.92	107.37	105.59
2003-04	111.63	111.74	109.69	102.20	121.30	110.68	115.43	106.08	114.19	111.29	106.99
2004-05	121.98	125.69	112.98	120.42	125.77	117.34	125.11	105.93	117.55	115.90	107.94
2005-06	131.64	134.39	117.58	132.36	137.09	123.41	145.90	105.65	125.03	119.49	110.66
2006-07	141.87	148.21	123.70	141.21	149.43	131.64	148.96	105.76	133.82	124.53	120.91
2007											
Mar.	143.17	149.67	127.10	142.89	151.34	133.62	145.45	105.52	135.15	125.66	123.39
Apr.	143.62	150.10	127.72	143.50	151.33	134.12	145.52	105.50	136.46	126.23	123.39
May.	144.94	152.77	127.95	144.28	151.05	134.33	145.53	105.81	136.62	126.79	124.00
Jun.	145.23	152.31	128.61	145.82	151.06	134.76	145.60	105.85	137.11	127.42	124.18
Jul.	146.70	154.58	129.06	146.85	151.16	135.99	146.24	105.79	137.76	128.60	129.23
Aug.	148.64	158.26	129.48	148.03	151.72	137.05	146.58	105.85	138.17	129.08	129.26
Sep.	151.80	164.83	129.74	149.26	152.74	137.58	146.75	105.86	138.21	130.71	129.51
Oct.	153.66	168.18	130.97	150.43	152.76	137.99	146.76	106.21	138.74	132.77	129.75
Nov.	153.87	167.22	131.84	151.73	154.36	138.31	146.85	106.21	139.17	134.36	129.81
Dec.	154.77	167.85	132.52	153.10	156.37	139.58	147.17	106.24	139.46	135.29	130.05
2008											
Jan.	157.73	172.96	133.03	154.61	160.04	140.44	148.21	106.31	139.51	137.33	130.61
Feb.	158.50	172.16	133.42	156.25	160.45	141.41	153.16	106.31	139.60	141.52	131.34
Mar.	163.30	180.52	135.89	158.04	164.25	142.91	158.04	106.51	139.85	145.69	131.46

Source : Federal Bureau of Statistics

Index Numbers of Consumer Prices (2000 - 01=100)



Index Numbers of Wholesale Prices (2000- 01=100)



8.2 Index Numbers of Wholesale Prices by Commodity Groups (2000-01=100)

Year/ Month	General	Food	Raw Materials	Fuel,Lighting and Lubricants	Manufactures	Building Materials
2002-03	107.77	105.62	115.51	115.95	103.67	102.90
2003-04	116.29	112.98	135.12	119.23	111.83	126.46
2004-05	124.14	125.03	110.44	138.01	113.05	143.79
2005-06	136.68	133.78	121.93	174.57	115.39	144.18
2006-07	146.17	145.67	138.85	184.10	119.91	151.93
2007						
Mar.	146.55	146.79	142.96	180.02	120.49	156.57
Apr.	148.25	147.77	144.83	184.93	121.14	157.01
May.	149.87	150.86	145.86	185.87	121.39	156.74
Jun.	151.52	153.17	144.05	189.25	122.06	156.68
Jul.	154.10	155.72	148.27	193.82	122.57	159.92
Aug.	155.90	158.78	153.99	192.14	123.78	161.36
Sep.	158.42	163.56	145.95	197.38	124.36	161.47
Oct.	161.30	165.61	147.54	206.84	124.56	161.35
Nov.	163.93	167.14	155.48	213.00	125.00	162.58
Dec.	163.83	168.26	153.50	209.78	125.67	163.21
2008						
Jan.	166.75	172.50	155.02	211.06	127.50	169.43
Feb.	168.81	172.40	155.08	218.11	129.47	174.18
Mar.	175.55	177.57	159.67	233.17	132.10	187.03

Source : Federal Bureau of Statistics

8.3 Combined Sensitive Price Indicator (SPI) by Income Groups (2000-01 =100)

Year/ Month	INCOME GROUP				Combined
	Group-I	Group-II	Group-III	Group-IV	
	Up to Rs.3000	Rs.3001 to Rs.5000	Rs.5001 to Rs.12000	Above Rs.12000	
2002-03	107.06	107.77	107.66	108.49	107.53
2003-04	114.38	114.88	114.32	114.58	113.93
2004-05	127.59	127.50	127.01	127.35	126.52
2005-06	136.56	136.15	135.99	139.80	136.43
2006-07	151.34	150.44	149.97	152.32	149.29
2007					
Mar.	152.04	151.19	150.55	152.36	149.72
Apr.	152.18	151.36	150.58	152.33	149.91
May.	154.27	153.45	152.53	153.76	151.74
Jun.	156.56	155.67	154.61	155.29	153.70
Jul.	158.84	157.82	156.54	156.66	155.42
Aug.	161.50	160.55	159.53	159.63	158.45
Sep.	161.67	165.75	164.66	163.24	162.29
Oct.	168.18	167.09	165.52	164.08	163.71
Nov.	169.61	168.22	166.08	163.93	163.89
Dec.	172.07	170.48	168.06	165.26	165.41
2008					
Jan.	176.65	174.65	171.63	167.85	168.24
Feb.	174.31	172.38	169.88	167.24	166.94
Mar.	180.27	178.26	175.95	174.61	173.96

Note: SPI figures revised as it is computed on 53 items instead of 51 items.

Source : Federal Bureau of Statistics

8.4 Bullion Prices

(Rupees per 10 grams)

Year / Month	GOLD TEZABI		SILVER TEZABI			
	Karachi	Lahore	Karachi	Lahore		
2002-03	6,378	6,398	90	94		
2003-04	7,328	7,337	92	111		
2004-05	8,216	8,238	118	138		
2005-06	10,317	10,307	180	176		
2006-07	12,619	12,603	228	231		
2007	Mar.	12,956	12,945	241	243	
	Apr.	13,253	13,254	246	248	
	May.	13,136	13,124	245	245	
	Jun.	12,988	12,859	246	247	
	Jul.	13,054	12,946	246	244	
	Aug.	13,096	12,946	240	244	
	Sep.	13,613	13,592	245	246	
	Oct.	14,581	14,546	252	250	
	Nov.	15,787	15,740	273	275	
	Dec.	15,870	15,794	275	281	
	2008	Jan.	17,562	17,473	309	302
		Feb.	18,681	18,599	345	340
Mar.		19,732	19,694	400	416	

Figures are monthly / yearly averages

Source: Daily Business Recorder