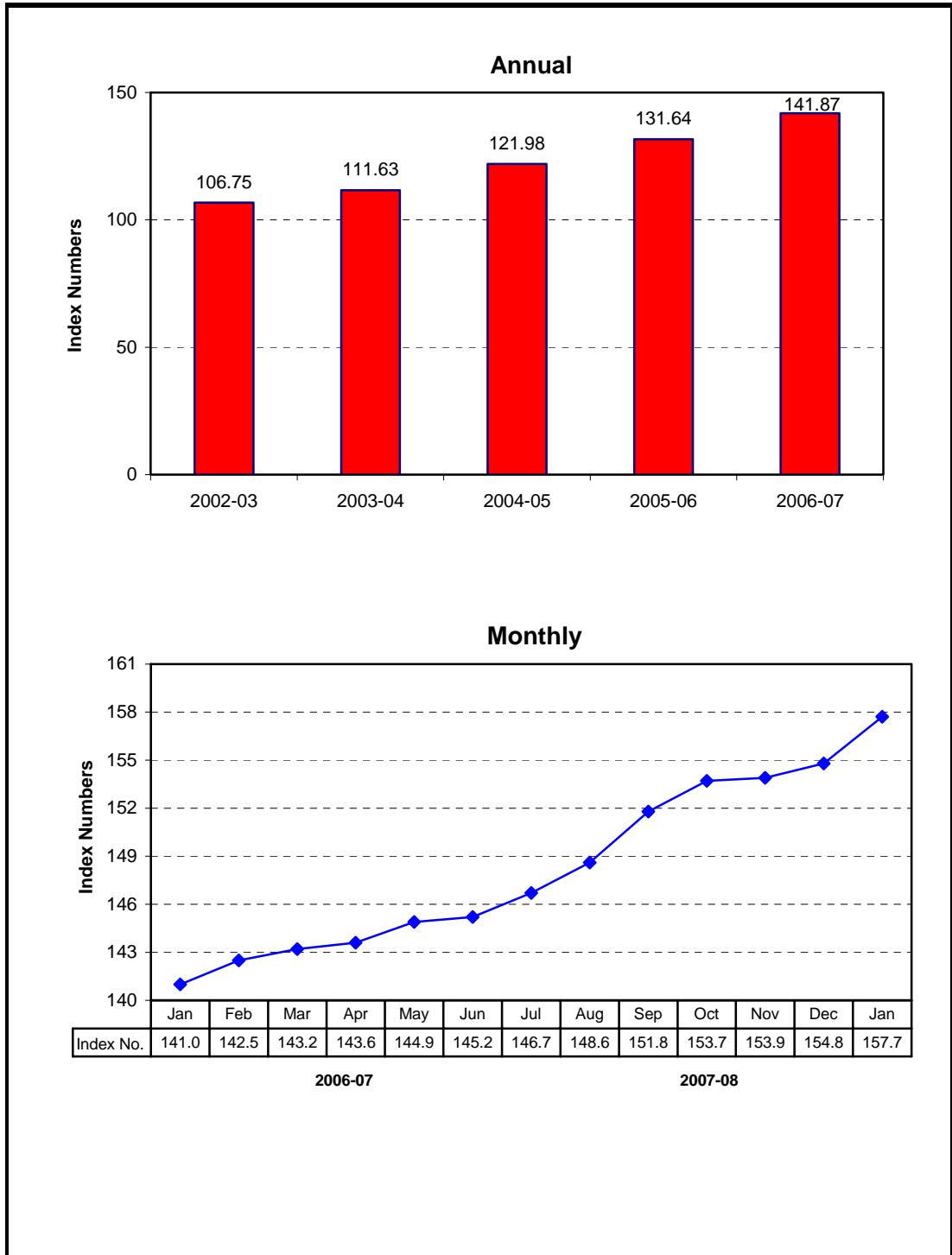


## 8.1 Combined Consumer Price Index Numbers by Commodity Groups - All Urban (2000-01=100)

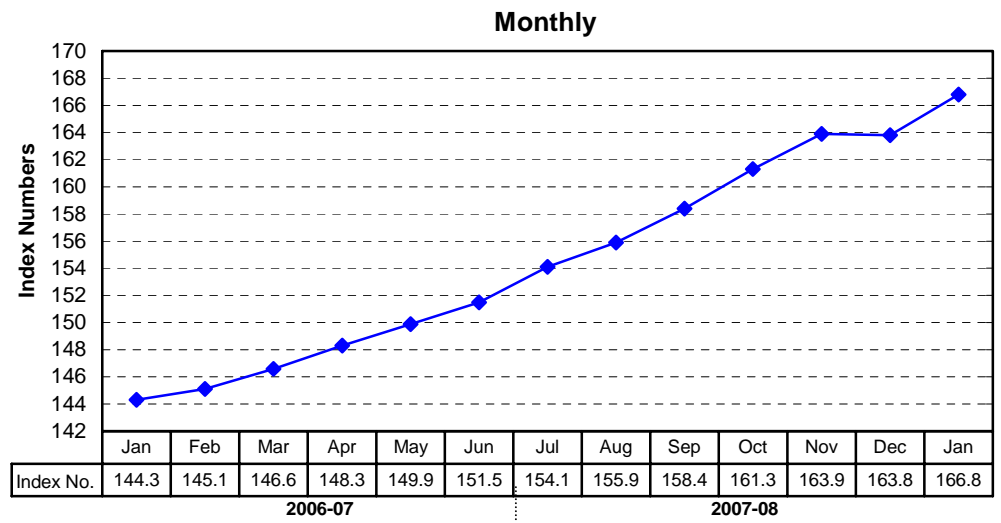
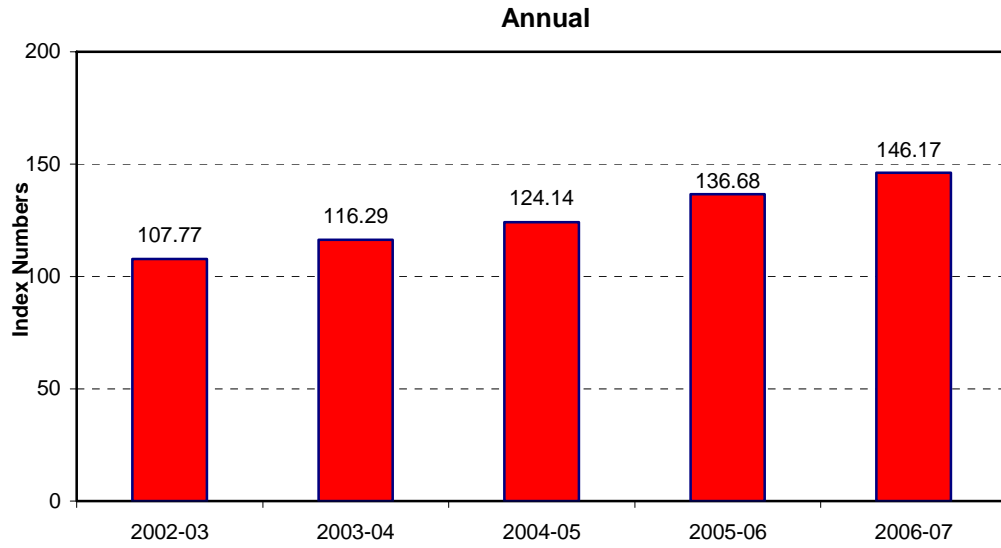
Year / Month	General	Food	Apparel	House	Fuel	Household	Transpor-	Recreation	Education	Cleaning	Medicare
		Beverages and Tobacco	Textile and Footwear		and Lighting	Furniture and Equipment	tation and Communi- cation	Entertain- ment & Education		Laundry and Personal Appearance	
2002-03	<b>106.75</b>	105.40	106.78	103.54	117.81	106.90	111.60	107.21	109.92	107.37	105.59
2003-04	<b>111.63</b>	111.74	109.69	102.20	121.30	110.68	115.43	106.08	114.19	111.29	106.99
2004-05	<b>121.98</b>	125.69	112.98	120.42	125.77	117.34	125.11	105.93	117.55	115.90	107.94
2005-06	<b>131.64</b>	134.39	117.58	132.36	137.09	123.41	145.90	105.65	125.03	119.49	110.66
2006-07	<b>141.87</b>	148.21	123.70	141.21	149.43	131.64	148.96	105.76	133.82	124.53	120.91
2007											
Jan.	<b>141.01</b>	146.27	122.46	141.24	149.05	132.31	148.63	105.79	133.70	124.75	121.54
Feb.	<b>142.47</b>	148.35	125.09	142.10	151.13	132.97	148.74	105.56	134.97	125.19	121.72
Mar.	<b>143.17</b>	149.67	127.10	142.89	151.34	133.62	145.45	105.52	135.15	125.66	123.39
Apr.	<b>143.62</b>	150.10	127.72	143.50	151.33	134.12	145.52	105.50	136.46	126.23	123.39
May.	<b>144.94</b>	152.77	127.95	144.28	151.05	134.33	145.53	105.81	136.62	126.79	124.00
Jun.	<b>145.23</b>	152.31	128.61	145.82	151.06	134.76	145.60	105.85	137.11	127.42	124.18
Jul.	<b>146.70</b>	154.58	129.06	146.85	151.16	135.99	146.24	105.79	137.76	128.60	129.23
Aug.	<b>148.64</b>	158.26	129.48	148.03	151.72	137.05	146.58	105.85	138.17	129.08	129.26
Sep.	<b>151.80</b>	164.83	129.74	149.26	152.74	137.58	146.75	105.86	138.21	130.71	129.51
Oct.	<b>153.66</b>	168.18	130.97	150.43	152.76	137.99	146.76	106.21	138.74	132.77	129.75
Nov.	<b>153.87</b>	167.22	131.84	151.73	154.36	138.31	146.85	106.21	139.17	134.36	129.81
Dec.	<b>154.77</b>	167.85	132.52	153.10	156.37	139.58	147.17	106.24	139.46	135.29	130.05
2008											
Jan.	<b>157.73</b>	172.96	133.03	154.61	160.04	140.44	148.21	106.31	139.51	137.33	130.61

Source : Federal Bureau of Statistics

## Index Numbers of Consumer Prices (2000 - 01=100)



## Index Numbers of Wholesale Prices (2000- 01=100)



## 8.2 Index Numbers of Wholesale Prices by Commodity Groups (2000-01=100)

Year/ Month	General	Food	Raw Materials	Fuel,Lighting and Lubricants	Manufactures	Building Materials
2002-03	<b>107.77</b>	105.62	115.51	115.95	103.67	102.90
2003-04	<b>116.29</b>	112.98	135.12	119.23	111.83	126.46
2004-05	<b>124.14</b>	125.03	110.44	138.01	113.05	143.79
2005-06	<b>136.68</b>	133.78	121.93	174.57	115.39	144.18
2006-07	<b>146.17</b>	145.67	138.85	184.10	119.91	151.93
2007						
Jan.	<b>144.31</b>	144.40	141.75	177.91	118.96	149.91
Feb.	<b>145.07</b>	145.76	142.40	176.60	119.05	157.13
Mar.	<b>146.55</b>	146.79	142.96	180.02	120.49	156.57
Apr.	<b>148.25</b>	147.77	144.83	184.93	121.14	157.01
May.	<b>149.87</b>	150.86	145.86	185.87	121.39	156.74
Jun.	<b>151.52</b>	153.17	144.05	189.25	122.06	156.68
Jul.	<b>154.10</b>	155.72	148.27	193.82	122.57	159.92
Aug.	<b>155.90</b>	158.78	153.99	192.14	123.78	161.36
Sep.	<b>158.42</b>	163.56	145.95	197.38	124.36	161.47
Oct.	<b>161.30</b>	165.61	147.54	206.84	124.56	161.35
Nov.	<b>163.93</b>	167.14	155.48	213.00	125.00	162.58
Dec.	<b>163.83</b>	168.26	153.50	209.78	125.67	163.21
2008						
Jan.	<b>166.75</b>	172.50	155.02	211.06	127.50	169.43

Source : Federal Bureau of Statistics

### 8.3 Combined Sensitive Price Indicator (SPI) by Income Groups (2000-01 =100)

Year/ Month		INCOME GROUP				Combined
		Group-I Up to Rs.3000	Group-II Rs.3001 to Rs.5000	Group-III Rs.5001 to Rs.12000	Group-IV Above Rs.12000	
2002-03		107.06	107.77	107.66	108.49	<b>107.53</b>
2003-04		114.38	114.88	114.32	114.58	<b>113.93</b>
2004-05		127.59	127.50	127.01	127.35	<b>126.52</b>
2005-06		136.56	136.15	135.99	139.80	<b>136.43</b>
2006-07		151.34	150.44	149.97	152.32	<b>149.29</b>
2007	Jan.	151.92	150.65	149.91	151.79	<b>148.78</b>
	Feb.	152.06	150.79	150.07	151.52	<b>148.71</b>
	Mar.	152.04	151.19	150.55	152.36	<b>149.72</b>
	Apr.	152.18	151.36	150.58	152.33	<b>149.91</b>
	May.	154.27	153.45	152.53	153.76	<b>151.74</b>
	Jun.	156.56	155.67	154.61	155.29	<b>153.70</b>
	Jul.	158.84	157.82	156.54	156.66	<b>155.42</b>
	Aug.	161.50	160.55	159.53	159.63	<b>158.45</b>
	Sep.	161.67	165.75	164.66	163.24	<b>162.29</b>
	Oct.	168.18	167.09	165.52	164.08	<b>163.71</b>
	Nov.	169.61	168.22	166.08	163.93	<b>163.89</b>
	Dec.	172.07	170.48	168.06	165.26	<b>165.41</b>
2008	Jan.	176.65	174.65	171.63	167.85	<b>168.24</b>

Note: SPI figures revised as it is computed on 53 items instead of 51 items.

Source : Federal Bureau of Statistics

## 8.4 Bullion Prices

(Rupees per 10 grams)

Year / Month	GOLD TEZABI		SILVER TEZABI		
	Karachi	Lahore	Karachi	Lahore	
2002-03	6,378	6,398	90	94	
2003-04	7,328	7,337	92	111	
2004-05	8,216	8,238	118	138	
2005-06	10,317	10,307	180	176	
2006-07	12,619	12,603	228	231	
2007	Jan.	12,443	12,458	238	239
	Feb.	12,972	12,970	242	243
	Mar.	12,956	12,945	241	243
	Apr.	13,253	13,254	246	248
	May.	13,136	13,124	245	245
	Jun.	12,988	12,859	246	247
	Jul.	13,054	12,946	246	244
	Aug.	13,096	12,946	240	244
	Sep.	13,613	13,592	245	246
	Oct.	14,581	14,546	252	250
	Nov.	15,787	15,740	273	275
	Dec.	15,870	15,794	275	281
2008	Jan.	17,562	17,473	309	302

Figures are monthly / yearly averages

Source: Daily Business Recorder