

2.1 Pakistan Monetary Survey

(Depository Corporation Survey)

(Million Rupees)

Description	2005		2006		2007			
	Jun.	Dec.	Jun.	Dec.	Apr.	May.	Jun.	Jul.
Net Foreign Assets	687,363	621,354	786,458	775,042	844,923	867,661	1,063,417	1,049,940
Claims on non-residents	947,484	877,489	1,039,013	1,029,203	1,097,821	1,120,454	1,317,429	1,302,860
<i>Less: Liabilities to non-residents</i>	260,121	256,135	252,555	254,161	252,898	252,793	254,012	252,920
Domestic Credit	2,517,385	2,887,520	3,010,923	3,300,164	3,445,825	3,518,569	3,517,670	3,502,991
Net claims on General government ¹	713,755	781,182	802,948	826,385	931,451	970,437	898,319	935,608
Net claims on Central government	808,055	882,427	918,571	961,155	1,113,509	1,135,461	1,062,740	1,112,998
Claims on Central Govt.	998,713	1,129,834	1,176,896	1,202,688	1,351,714	1,393,544	1,368,149	1,379,508
<i>Less: Liabilities to Central Govt.</i>	190,658	247,407	258,325	241,533	238,205	258,083	305,409	266,510
Net claims on Provincial governments ²	(94,300)	(101,245)	(115,623)	(134,770)	(182,058)	(165,024)	(164,421)	(177,390)
Claims on Provincial Govts.	44,556	49,486	69,790	41,880	21,661	49,418	51,711	51,175
<i>Less: Liabilities to Provincial Govts.</i>	138,856	150,731	185,413	176,650	203,719	214,442	216,132	228,565
Claims on Private sectors	1,600,931	1,861,899	1,957,418	2,198,651	2,226,066	2,241,885	2,294,800	2,254,310
Claims on NFPSEs	106,431	124,893	136,209	136,126	140,754	153,781	164,140	156,659
Claims on NBFIs Depository & Non	96,268	119,546	114,348	139,002	147,554	152,466	160,411	156,414
Broad Money (M2)	2,965,174	3,201,675	3,407,794	3,665,543	3,804,550	3,880,933	4,052,986	3,990,529
Narrow Money (M1)	2,512,214	2,474,573	2,720,685	2,854,792	2,922,157	2,981,899	3,155,635	3,098,523
Currency outside Depository Corporations (Banks)	666,414	732,011	741,349	874,597	836,236	850,583	840,418	836,830
Transferable/Demand deposits	1,845,800	1,742,562	1,979,336	1,980,195	2,085,921	2,131,316	2,315,217	2,261,693
Time Deposit	452,960	727,102	687,109	810,751	882,393	899,034	897,351	892,006
Public sector funds/deposits (SBP)	23,714	23,028	23,225	23,419	23,446	23,453	23,478	23,478
Counterpart funds	539	525	546	512	511	511	519	519
Long –Term Foreign Liabilities	110	97	84	65	60	58	56	50
Other items (Net) ³	215,208	283,549	365,737	385,672	462,183	481,275	504,049	538,353
Other liabilities	684,454	778,772	887,273	1,020,479	1,112,895	1,160,470	1,219,889	1,194,910
<i>less: Other assets</i>	469,246	495,223	521,536	634,807	650,712	679,195	715,840	656,557
Memorandum items:								
Bank Clearings	1,416,613	1,656,863	1,854,688	1,888,611	1,786,231	1,964,168	2,286,183	2,026,532
Post Office Savings	50,661	39,257	61,418	52,977	61,586	66,880	67,054	64,711

Note: Pakistan Monetary Survey is the analytical accounts of State Bank of Pakistan and Scheduled banks based on monthly reporting closely in the line with MFSM. Data relates to last working day of the month.

2.1 Pakistan Monetary Survey (Depository Corporation Survey)

(Million Rupees)

Description	2007					2008		
	Aug.	Sep.	Oct.	Nov.	Dec.	Jan.	Feb.	Mar.
Net Foreign Assets	1,032,279	1,056,074	1,060,874	983,638	951,836	921,569	886,033	841,871
Claims on non-residents	1,284,544	1,310,862	1,315,746	1,245,568	1,225,442	1,184,680	1,148,896	1,114,011
<i>Less: Liabilities to non-residents</i>	252,265	254,788	254,872	261,930	273,606	263,111	262,863	272,140
Domestic Credit	3,570,461	3,560,561	3,621,748	3,821,106	4,012,716	4,021,338	4,137,011	4,224,425
Net claims on General government ¹	995,225	960,474	960,130	1,050,574	1,100,352	1,110,957	1,169,438	1,203,358
Net claims on Central Govt.	1,175,219	1,150,410	1,137,354	1,228,232	1,256,864	1,315,863	1,382,108	1,432,935
Claims on Central Govt.	1,448,799	1,425,285	1,428,244	1,520,160	1,573,468	1,622,614	1,676,073	1,734,361
<i>Less: Liabilities to Central Govt.</i>	273,580	274,875	290,890	291,928	316,604	306,751	293,965	301,426
Net claims on Provincial governments ²	(179,994)	(189,936)	(177,224)	(177,658)	(156,512)	(204,906)	(212,670)	-229,577
Claims on Provincial Govts.	49,085	48,820	43,701	41,596	39,690	31,764	25,922	23,270
<i>Less: Liabilities to Provincial Govts.</i>	229,079	238,756	220,925	219,254	196,202	236,670	238,592	252,847
Claims on Private sectors	2,272,801	2,292,848	2,336,761	2,425,920	2,562,819	2,582,993	2,615,140	2,662,846
Claims on NFPSEs	154,904	163,092	159,620	170,432	176,606	171,470	196,720	195,580
Claims on NBFIs Depository & Non Depository	147,531	144,147	165,237	174,180	172,939	155,918	155,713	162,641
Broad Money (M2)	4,061,982	4,115,021	4,127,079	4,220,242	4,387,940	4,304,169	4,357,125	4,398,125
Narrow Money (M1)	3,141,404	3,169,022	3,194,759	3,275,890	3,403,647	3,326,310	3,355,131	3,365,665
Currency outside Depository Corporations (Banks)	839,877	875,348	908,288	939,300	1,008,186	979,019	988,874	982,106
Transferable/Demand deposits	2,301,527	2,293,674	2,286,471	2,336,590	2,395,461	2,347,291	2,366,257	2,383,559
Time Deposit	920,578	945,999	932,320	944,352	984,293	977,859	1,001,994	1,032,460
Public sector funds/deposits (SBP)	23,478	23,478	23,478	23,486	23,504	23,504	23,504	23,504
Counterpart funds	521	521	521	523	531	531	533	533
Long -Term Foreign Liabilities	50	50	49	48	39	39	39	35
Other items (Net) ³	516,710	477,566	531,499	560,446	552,533	614,664	641,839	644,102
Other liabilities	1,104,922	1,095,736	1,141,689	1,163,549	1,226,455	1,217,264	1,283,148	1,307,346
<i>less: Other assets</i>	588,212	618,170	610,190	603,103	673,922	602,600	641,309	663,244
Memorandum items:								
Bank Clearings	1,729,731	1,581,359	1,503,547	1,622,994	1,598,221	1,659,650	1,487,362	1,828,075
Post Office Savings	64,712	64,816	64,320	61,605	61,518	63,002	65,178	65,178

1. General Government includes Central Government and Provincial Governments

2. Provincial Governments include Provincial Governments and Local /city Governments

3. *Other Liabilities* include Liabilities to scheduled banks, paid up capital and reserve accounts, Other liabilities from SBP and liabilities to SBP from scheduled banks. *Other assets* include claims on banks, other assets from SBP and claims on SBP from scheduled banks.

2.2 Analytical Accounts of State Bank of Pakistan

(Central Bank Survey)

(Million Rupees)

Description	2005		2006		2007			
	Jun.	Dec.	Jun.	Dec.	Apr.	May.	Jun.	Jul.
Net Foreign Assets	555,306	523,044	639,843	642,680	697,248	715,989	867,581	861,596
Claims on non-residents (Foreign Assets)	784,327	747,854	864,062	865,562	919,115	940,407	1,089,83	1,084,787
a) Monetary Gold Coin and Bullion	54,746	54,746	77,558	77,558	77,558	77,558	82,598	84,433
b) Holding of SDRs	13,569	12,915	13,124	13,122	13,230	13,033	12,802	12,904
c) Foreign Currency	767	3,176	3,126	2,792	2,829	2,275	3,510	3,441
d) Securities other than shares (Foreign)	472,514	414,829	555,312	549,365	600,770	611,647	685,469	648,610
e) Deposits	139,513	167,965	121,824	128,434	130,207	124,493	152,719	187,611
f) Loans	-	-	-	-	-	-	-	-
g) Financial Derivatives	-	-	-	-	-	-	-	-
h) Others	103,218	94,223	93,118	94,291	94,521	111,401	152,737	147,788
<i>Of which Quota - IMF</i>	90,312	93,254	92,156	91,315	91,315	95,586	94,817	95,607
Less: Liabilities to non-residents (Foreign Liab.)	229,021	224,810	224,219	222,882	221,867	224,418	222,254	223,191
a) Deposits	42,066	42,036	42,207	42,671	42,508	42,553	42,384	42,349
b) Securities other than (N.N.N.I.B Securities)	90,301	85,268	85,259	83,581	83,009	83,023	81,962	82,585
c) Financial Derivatives	-	-	-	-	-	-	-	-
d) Loans (IMF Loan 1 & PRGF and SFD)	96,654	97,506	96,753	96,630	96,350	98,842	97,908	98,257
e) Other (IMF Administration Charges)	..	-	-	-	-	-	-	-
Claims on other Depository Corporations (Banks)	210,377	214,573	218,359	275,936	278,825	278,614	271,594	268,089
a) Loans and Advances	181,987	186,183	193,579	250,716	254,045	253,834	253,419	250,505
b) Internal Bills Purchased and Discounted	116	116	116	116	116	116	116	116
c) Investment in Share Capital	28,274	28,274	24,664	25,104	24,664	24,664	18,059	17,468
Net claims on General government ¹	248,818	390,412	383,912	461,811	396,670	400,373	325,360	320,650
Net claims on Central Govt.	283,636	434,036	434,153	505,632	452,205	457,882	377,106	377,887
Claims on Central Govt.	347,862	542,609	525,082	575,706	509,072	522,680	469,696	424,037
a) Securities	332,129	535,481	517,625	568,249	501,246	514,855	461,725	416,066
b) Other Claims	15,733	7,128	7,457	7,457	7,826	7,825	7,971	7,971
Less: Liabilities to Central Government	64,226	108,573	90,929	70,074	56,867	64,798	92,590	46,150
a) Deposits	64,226	108,573	90,929	70,074	56,867	64,798	92,590	46,150
b) Other Liabilities	-	-	-	-	-	-	-	-

Note: Analytical accounts are the statistical presentation of monetary statistics of State Bank of Pakistan based on monthly reporting closely in the line with MFSM.

2.2 Analytical Accounts of State Bank of Pakistan

(Central Bank Survey)

(Million Rupees)

Description	2005		2006		2007			
	Jun.	Dec.	Jun.	Dec.	Apr.	May.	Jun.	Jul.
Net claims on Provincial governments ²	(34,818)	(43,624)	(50,241)	(43,821)	(55,535)	(57,509)	(51,746)	(57,237)
Claims on Provincial governments	10,814	14,503	16,404	6,560	10,713	9,344	10,820	10,893
a) Securities	-	-	-	-	-	-	-	-
b) Other Claims	10,814	14,503	16,404	6,560	10,713	9,344	10,820	10,893
Less: Liabilities to Provincial Govts.	45,632	58,127	66,645	50,381	66,248	66,853	62,566	68,130
a) Deposits	45,632	58,127	66,645	50,381	66,248	66,853	62,566	68,130
b) Other Liabilities	-	-	-	-	-	-	-	-
Claims on other sectors	16,927	15,415	15,889	17,819	16,268	16,248	16,187	16,167
a) Other financial corporations	16,927	15,415	15,889	17,819	16,268	16,248	16,187	16,167
1) Loans and advances to NBFIs	15,254	13,742	14,216	16,146	14,155	14,135	14,074	14,054
2) Investment in NBFIs shares	1,673	1,673	1,673	1,673	2,113	2,113	2,113	2,113
b) Other resident sectors	-	-	-	-	-	-	-	-
Monetary Base (Reserve Money)	909,013	985,352	1,001,334	1,191,780	1,162,449	1,183,857	1,210,429	1,184,706
a) Currency in circulation (Currency outside Banks)	666,414	732,011	741,349	874,597	836,236	850,583	840,418	836,830
b) Liabilities to other Depository Corps.	239,264	250,014	255,054	312,385	320,114	327,126	363,003	341,647
1) Reserve deposits (Banker's deposits)	196,302	207,750	207,574	264,356	267,457	273,825	305,169	280,179
2) Other liabilities (Currency in scheduled banks)	42,962	42,264	47,480	48,029	52,657	53,301	57,834	61,468
c) Deposits included in broad money (Private sector deposits)	3,335	3,327	4,931	4,798	6,099	6,148	7,008	6,229
Public sector funds/deposits	23,714	23,028	23,225	23,419	23,446	23,453	23,478	23,478
Counterpart funds	539	525	546	512	511	511	519	519
Paid up Capital and Reserve	5,515	15,514	15,514	34,656	34,656	34,656	55,939	55,939
Other items (Net)	92,644	119,024	217,385	147,881	167,949	168,747	190,356	201,858
Other Liabilities	120,364	152,376	270,905	200,070	223,509	247,438	269,387	245,313
Less: Other Assets	27,720	33,352	53,520	52,189	55,560	78,691	79,031	43,455
Plus: Consolidation adjustments	-	-	-	-	-	-	-	-

2.2 Analytical Accounts of State Bank of Pakistan (Central Bank Survey)

(Million Rupees)

Description	2007					2008		
	Aug.	Sep.	Oct.	Nov.	Dec.	Jan.	Feb.	Mar.
Net Foreign Assets	864,727	878,471	905,864	849,499	830,367	804,737	771,122	718,488
Claims on non-residents (Foreign Assets)	1,088,496	1,105,845	1,132,630	1,079,089	1,057,987	1,034,138	1,001,148	955,652
a) Monetary Gold Coin and Bullion	85,737	94,754	100,791	100,736	108,087	121,613	127,740	123,321
b) Holding of SDRs	12,891	13,126	13,237	13,458	13,149	13,258	13,287	13,635
c) Foreign Currency	3,964	3,018	4,053	1,723	3,563	3,232	1,859	2,285
d) Securities other than shares (Foreign)	698,437	690,290	748,550	714,683	681,894	658,248	623,507	556,921
e) Deposits	172,472	183,924	147,938	146,773	148,784	136,793	131,741	149,016
f) Loans	-	-	-	-	-	-	-	-
g) Financial Derivatives	-	-	-	-	-	-	-	-
h) Others	114,995	120,733	118,061	101,716	102,510	100,994	103,014	110,474
<i>Of which Quota - IMF</i>	95,607	97,690	98,706	100,633	99,892	99,892	101,922	106,614
Less: Liabilities to non-residents (Foreign Liab.)	223,769	227,374	226,766	229,590	227,620	229,401	230,026	237,164
a) Deposits	42,602	42,562	42,554	43,055	43,269	43,891	43,813	44,021
b) Securities other than shares (N.N.N.I.B Securities)	82,585	84,402	82,991	83,433	81,233	82,551	82,465	85,443
c) Financial Derivatives	-	-	-	-	-	-	-	-
d) Loans (IMF Loan 1 & PRGF and SDF)	98,582	100,410	101,221	103,102	103,118	102,959	103,748	107,700
e) Other (IMF Administration Charges)	-	-	-	-	-	-	-	-
Claims on other Depository Corporations (Banks)	206,256	229,848	229,093	229,186	219,646	218,154	214,888	215,112
a) Loans and Advances	188,672	212,664	211,909	212,701	203,461	201,969	198,703	199,427
b) Internal Bills Purchased and Discounted	116	116	116	116	116	116	116	116
c) Investment in Share Capital	17,468	17,068	17,068	16,369	16,069	16,069	16,069	15,569
Net Claims on General government ¹	364,575	311,389	336,405	480,294	524,970	624,614	672,999	730,517
Net claims on Central government	427,363	373,875	383,846	526,890	553,985	683,986	727,818	800,844
Claims on Central government	472,503	423,569	428,620	560,462	608,439	729,066	776,437	854,833
a) Securities	464,532	415,598	420,649	552,491	600,468	721,095	768,466	846,862
b) Other Claims	7,971	7,971	7,971	7,971	7,971	7,971	7,971	7,971
Less: Liabilities to Central government	45,140	49,694	44,774	33,572	54,454	45,080	48,619	53,989
a) Deposits	45,140	49,694	44,774	33,572	54,454	45,080	48,619	53,989
b) Other Liabilities	-	-	-	-	-	-	-	-

Revaluation Procedure:

- Gold is revalued on month end basis from June 07 before that it was revalued at the end of financial year (June end) on the basis of closing London Market Rate.
- SDR holdings (with IMF and SBP) are revalued on month end basis from June 07 before that it was revalued on weekly basis.
- IMF related balances, IMF Account No.1, IMF Account No. 2, IMF securities account and IMF quota account, are revalued at the close of IMF financial year i.e. 30th April and also 30th June of SBP.
- Liabilities balances such as PRGF loan account & IMF (SDF) loan account are revalued on month end basis.

2.2 Analytical Accounts of State Bank of Pakistan (Central Bank Survey)

(Million Rupees)

Description	2007					2008		
	Aug.	Sep.	Oct.	Nov.	Dec.	Jan.	Feb.	Mar.
Net claims on Provincial governments ²	(62,788)	(62,486)	(47,441)	(46,596)	(29,015)	(59,372)	(54,819)	(70,327)
Claims on Provincial governments	8,827	11,533	11,144	12,751	14,753	14,802	14,816	15,519
a) Securities	-	-	-	-	-	-	-	-
b) Other Claims	8,827	11,533	11,144	12,751	14,753	14,802	14,816	15,519
Less: Liabilities to Provincial Govts.	71,615	74,019	58,585	59,347	43,768	74,174	69,635	85,846
a) Deposits	71,615	74,019	58,585	59,347	43,768	74,174	69,635	85,846
b) Other Liabilities	-	-	-	-	-	-	-	-
Claims on other sectors	16,048	16,376	16,347	16,488	17,280	17,289	15,905	16,353
a) Other financial corporations	16,048	16,376	16,347	16,488	17,280	17,289	15,905	16,353
1) Loans and advances to NBFIs	13,935	13,862	13,834	13,975	13,967	13,976	12,592	12,540
2) Investment in NBFIs shares	2,113	2,514	2,513	2,513	3,313	3,313	3,313	3,813
b) Other resident sectors	-	-	-	-	-	-	-	-
Monetary Base (Reserve Money)	1,165,801	1,213,586	1,247,933	1,271,759	1,367,907	1,314,202	1,350,246	1,338,148
a) Currency in circulation	839,877	875,348	908,288	939,300	1,008,186	979,019	988,874	982,106
b) Liabilities to other Depository Corps.	321,902	332,750	334,554	327,365	354,575	330,181	356,381	352,190
1) Reserve deposits (Banker's deposits)	267,305	275,006	272,134	271,457	286,560	269,463	300,115	288,535
2) Other liabilities (Currency in scheduled banks)	54,597	57,744	62,420	55,908	68,015	60,718	56,266	63,655
c) Deposits included in broad money (Private sector deposits)	4,022	5,488	5,091	5,094	5,146	5,002	4,991	3,852
Public sector funds/deposits	23,478	23,478	23,478	23,486	23,504	23,504	23,504	23,504
Counterpart funds	521	521	521	523	531	531	533	533
Paid up Capital and Reserve	55,939	55,939	65,079	65,079	65,079	65,079	65,079	65,079
Other items (Net)	205,864	142,559	150,698	214,619	135,240	261,476	235,552	253,206
Other Liabilities	263,242	194,421	202,869	269,169	243,826	315,952	300,094	343,229
Less: Other Assets	57,378	51,862	52,171	54,550	108,586	54,476	64,542	90,023
Plus: Consolidation adjustments	-	-	-	-	-	-	-	-

1. General Government includes Central Government and Provincial Governments

2. Provincial Governments includes Provincial Governments and Local / city Governments

2.3 Analytical Accounts of Scheduled Banks (Other Depository Corporations Survey)

(Million Rupees)

Description	2005		2006		2007			
	Jun.	Dec.	Jun.	Dec.	Apr.	May.	Jun.	Jul.
Net Foreign Assets	132,057	98,310	146,615	132,362	147,675	151,672	195,836	188,344
Claims on non-residents (Foreign Assets)	163,157	129,635	174,951	163,641	178,706	180,047	227,594	218,073
a) Foreign currency	6,806	7,350	6,415	9,546	8,960	7,964	7,352	7,651
b) Deposits	88,742	56,170	92,240	79,418	94,338	94,985	143,921	133,641
c) Securities other than shares ¹	67,609	66,115	76,296	74,677	75,408	77,098	76,321	76,781
d) Loans	-	-	-	-	-	-	-	-
e) Financial derivatives	-	-	-	-	-	-	-	-
f) Other	-	-	-	-	-	-	-	-
Less: Liabilities to non-residents (Foreign Liab.)	31,100	31,325	28,336	31,279	31,031	28,375	31,758	29,729
a) Deposits	24,777	27,366	23,910	26,283	25,159	24,712	24,644	24,166
b) Securities other than shares	-	-	-	-	-	-	-	-
c) Financial derivatives	-	-	-	-	-	-	-	-
d) Loans	6,323	3,959	4,426	4,996	5,872	3,663	7,114	5,563
e) Other	-	-	-	-	-	-	-	-
Claims on central bank	231,150	247,298	249,658	306,682	316,327	321,980	365,216	345,014
a) Currency	42,962	42,265	47,480	48,029	52,657	53,301	57,834	61,468
b) Reserve deposits	188,188	205,033	202,178	258,653	263,670	268,679	307,382	283,546
c) Other Claims	-	-	-	-	-	-	-	-
Net claims on General Government ²	464,937	390,770	419,036	364,574	534,781	570,064	572,959	614,958
Net claims on Central Govt.	524,419	448,391	484,418	455,523	661,304	677,579	685,634	735,111
Claims on Central Govt.	650,851	587,225	651,814	626,982	842,642	870,864	898,453	955,471
a) Securities	600,743	551,012	597,924	568,506	793,891	811,013	838,985	897,111
b) Other claims	50,108	36,213	53,890	58,476	48,751	59,851	59,468	58,360
Less: Liabilities to Central Govt.	126,432	138,834	167,396	171,459	181,338	193,285	212,819	220,360
a) Deposits	126,432	138,834	167,396	171,459	181,338	193,285	212,819	220,360
b) Other Liabilities	-	-	-	-	-	-	-	-
Net claims on provincial governments ³	(59,482)	(57,621)	(65,382)	(90,949)	(126,523)	(107,515)	(112,675)	(120,153)
Claims on provincial governments	33,742	34,983	53,386	35,320	10,948	40,074	40,891	40,282
a) Securities	80	79	76	75	75	75	75	75
b) Other claims	33,662	34,904	53,310	35,245	10,873	39,999	40,816	40,207
Less: Liabilities to prov. governments	93,224	92,604	118,768	126,269	137,471	147,589	153,566	160,435
a) Deposits	93,224	92,604	118,768	126,269	137,471	147,589	153,566	160,435
b) Other liabilities	-	-	-	-	-	-	-	-

Note: Analytical accounts are the statistical presentation of monetary statistics of Scheduled Banks based on monthly reporting closely in the line with MFSM.

2.3 Analytical Accounts of Scheduled Banks (Other Depository Corporations Survey)

(Million Rupees)

Description	2005		2006		2007			
	Jun.	Dec.	Jun.	Dec.	Apr.	May.	Jun.	Jul.
Claims on other sectors	1,786,703	2,090,923	2,192,086	2,455,960	2,498,106	2,531,884	2,603,164	2,551,216
a) Other financial corporations	79,341	104,131	98,459	121,183	131,286	136,218	144,224	140,247
b) Public non financial corporations	106,431	124,893	136,209	136,126	140,754	153,781	164,140	156,659
c) Other non financial corporations	646,467	753,767	798,577	906,975	921,836	925,502	926,057	917,795
d) Other resident sectors	954,464	1,108,132	1,158,841	1,291,676	1,304,230	1,316,383	1,368,743	1,336,515
Liabilities to Central Bank	189,678	192,709	202,157	255,829	260,586	260,530	269,415	257,378
Deposits included in broad money	2,295,425	2,466,337	2,661,514	2,786,148	2,962,215	3,024,202	3,205,560	3,147,470
Transferable deposits (Demand deposits)	1,842,465	1,739,235	1,974,405	1,975,397	2,079,822	2,125,168	2,308,209	2,255,464
a) Other financial corporations	16,276	31,460	31,267	30,561	46,771	48,199	62,008	56,270
b) Public non financial corporations	124,015	122,578	124,708	83,627	118,797	116,437	126,860	122,902
c) Other non financial corporations	593,068	563,885	593,012	623,956	651,120	662,839	727,738	684,295
d) Other resident sectors	1,109,106	1,021,312	1,225,418	1,237,253	1,263,134	1,297,693	1,391,603	1,391,997
Time deposits	452,960	727,102	687,109	810,751	882,393	899,034	897,351	892,006
a) Other financial corporations	7,617	13,913	18,842	28,927	27,837	28,124	29,838	32,529
b) Public non financial corporations	93,133	148,919	131,483	131,955	141,100	150,103	145,570	133,755
c) Other non financial corporations	109,393	150,033	171,011	203,150	243,245	250,603	248,101	253,930
d) Other resident sectors	242,817	414,237	365,773	446,719	470,211	470,204	473,842	471,792
Deposits Excluded from broad money	29,906	49,022	54,626	64,030	46,318	42,896	58,236	43,898
Loans	24,878	47,878	165,957	159,980	153,646	133,279	214,667	166,026
<i>Of which: Other financial corporations</i>	672	1,540	1,448	5,203	2,892	2,373	3,136	5,570
Financial Derivatives	-	-	-	-	-	-	-	-
Central Govt. Lending Fund	9,314	9,314	9,314	9,314	9,314	9,314	9,762	9,427
Long -Term Foreign Liabilities	110	97	84	65	60	58	56	50
Shares and Other equity	201,521	225,803	246,334	317,141	400,590	404,515	420,191	415,532
a) Funds contributed by owners	98,086	106,250	121,198	165,858	188,548	192,485	206,118	207,797
b) Retained earnings	4,655	11,896	29,798	26,120	42,676	44,249	44,263	40,121
c) General & Special Reserves	85,548	88,150	95,997	109,051	146,909	143,053	143,720	144,095
d) Valuation adjustment	13,232	19,507	(659)	16,112	22,457	24,728	26,090	23,519
Other items (net)	(135,985)	(163,858)	(332,587)	(332,926)	(335,838)	(299,194)	(440,710)	(340,249)
Other liabilities	762,030	835,862	790,449	903,638	709,933	748,731	854,313	884,548
<i>Less: Other Assets</i>	898,015	999,720	1,123,036	1,236,564	1,045,771	1,047,925	1,295,023	1,224,797
<i>Plus Consolidation adjustment</i>	-	-	-	-	-	-	-	-

2.3 Analytical Accounts of Scheduled Banks (Other Depository Corporations Survey)

(Million Rupees)

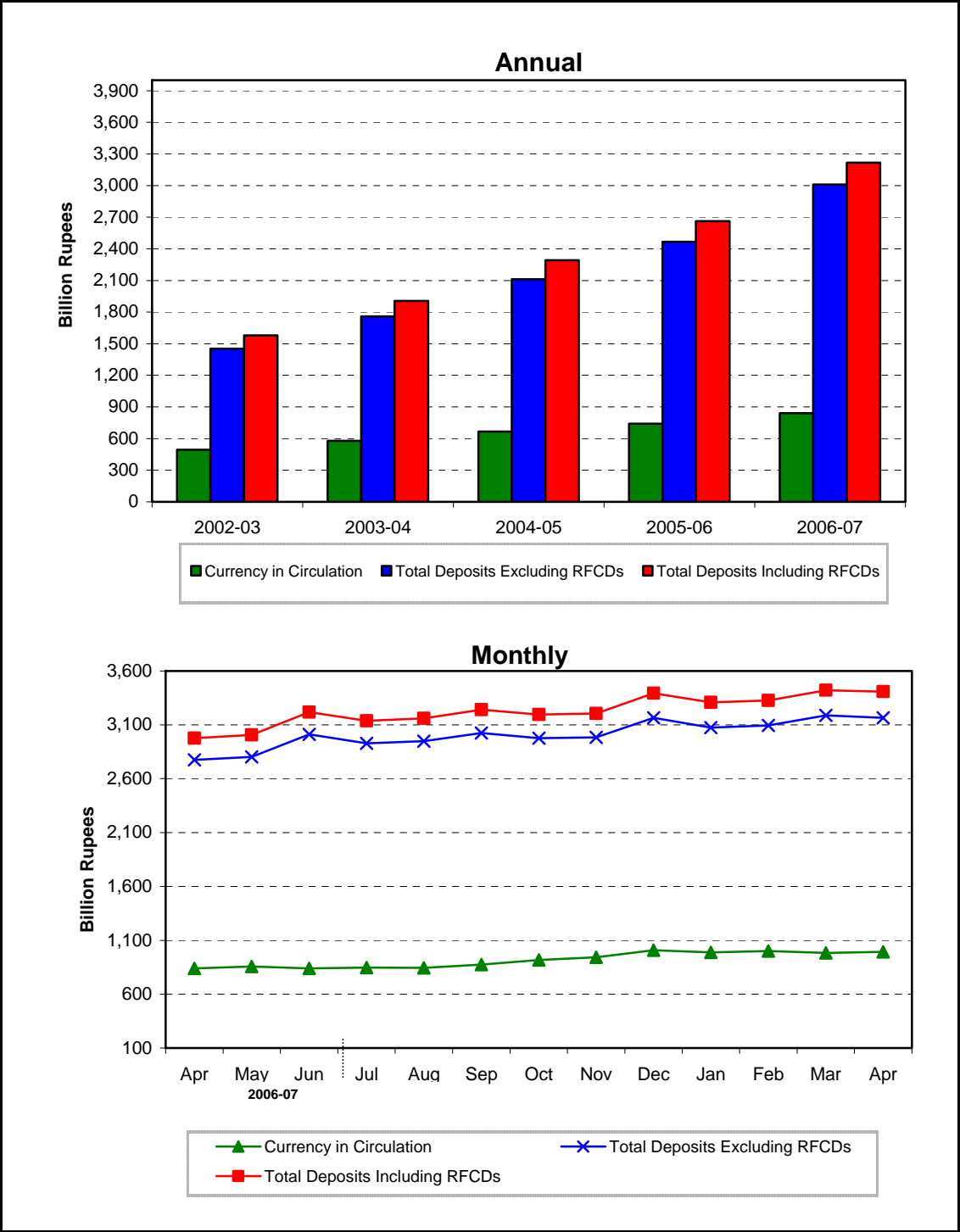
Description	2007					2008		
	Aug.	Sep.	Oct.	Nov.	Dec.	Jan.	Feb.	Mar.
Net Foreign Assets	167,552	177,603	155,010	134,139	121,469	116,832	114,911	123,383
Claims on non-residents (Foreign Assets)	196,048	205,017	183,116	166,479	167,455	150,542	147,748	158,359
a) Foreign currency	8,895	8,972	10,329	10,267	13,046	11,835	10,668	9,476
b) Deposits	111,509	120,001	97,500	83,514	81,219	68,017	66,675	75,583
c) Securities other than shares ¹	75,644	76,044	75,287	72,698	73,190	70,690	70,405	73,300
d) Loans	-	-	-	-	-	-	-	-
e) Financial derivatives	-	-	-	-	-	-	-	-
f) Other	-	-	-	-	-	-	-	-
Less: Liabilities to non-residents	28,496	27,414	28,106	32,340	45,986	33,710	32,837	34,976
a) Deposits	22,433	22,091	22,439	22,157	22,510	22,374	22,019	22,294
b) Securities other than shares	-	-	-	-	-	-	-	-
c) Financial derivatives	-	-	-	-	-	-	-	-
d) Loans	6,063	5,323	5,667	10,183	23,476	11,336	10,818	12,682
e) Other	-	-	-	-	-	-	-	-
Claims on central bank	324,579	336,461	328,927	319,367	345,691	329,971	361,879	358,110
a) Currency	54,597	57,744	62,420	55,908	68,015	60,718	56,266	63,655
b) Reserve deposits	269,982	278,717	266,507	263,459	277,676	269,253	305,613	294,455
c) Other Claims	-	-	-	-	-	-	-	-
Net claims on General government ²	630,650	649,085	623,725	570,280	575,382	486,343	496,439	472,841
Net claims on Central government	747,856	776,535	753,508	701,342	702,879	631,877	654,290	632,091
Claims on Central government	976,296	1,001,716	999,624	959,698	965,029	893,548	899,636	879,528
a) Securities	917,189	941,968	941,781	905,994	912,188	830,477	825,462	780,795
b) Other claims	59,107	59,748	57,843	53,704	52,841	63,071	74,174	98,733
Less: Liabilities to Central government	228,440	225,181	246,116	258,356	262,150	261,671	245,346	247,437
a) Deposits ³	228,440	225,181	246,116	258,356	262,150	261,671	245,346	247,437
b) Other Liabilities	-	-	-	-	-	-	-	-
Net Claims on Provincial governments ⁴	(117,206)	(127,450)	(129,783)	(131,062)	(127,497)	(145,534)	(157,851)	(159,250)
Claims on Provincial governments	40,258	37,287	32,557	28,845	24,937	16,962	11,106	7,751
a) Securities	75	75	75	79	75	161	75	75
b) Other claims	40,183	37,212	32,482	28,766	24,862	16,801	11,031	7,676
Less: Liabilities to Prov. governments	157,464	164,737	162,340	159,907	152,434	162,496	168,957	167,001
a) Deposits	157,464	164,737	162,340	159,907	152,434	162,496	168,957	167,001
b) Other liabilities	-	-	-	-	-	-	-	-

2.3 Analytical Accounts of Scheduled Banks (Other Depository Corporations Survey)

(Million Rupees)

Description	2007					2008		
	Aug.	Sep.	Oct.	Nov.	Dec.	Jan.	Feb.	Mar.
Claims on other sectors	2,559,188	2,583,711	2,645,271	2,754,044	2,895,084	2,893,092	2,951,668	3,004,714
a) Other financial corporations	131,483	127,771	148,890	157,692	155,659	138,629	139,808	146,288
b) Public non financial corporations	154,904	163,092	159,620	170,432	176,606	171,470	196,720	195,580
c) Other non financial corporations	923,709	655,696	988,360	1,039,289	1,010,516	1,026,746	1,058,662	1,064,125
d) Other resident sectors	1,349,092	1,637,152	1,348,401	1,386,631	1,552,303	1,556,247	1,556,478	1,598,721
Liabilities to Central Bank	197,757	219,184	218,384	220,049	241,778	219,712	215,159	224,949
Deposits included in broad money	3,218,083	3,234,185	3,213,700	3,275,848	3,374,608	3,320,148	3,363,260	3,412,167
Transferable deposits (Demand deposits)	2,297,505	2,288,186	2,281,380	2,331,496	2,390,315	2,342,289	2,361,266	2,379,707
a) Other financial corporations	51,026	52,318	45,852	55,559	48,230	51,246	51,050	51,693
b) Public non financial corporations	163,283	156,498	147,323	172,827	158,409	157,413	167,059	150,302
c) Other non financial corporations	683,354	275,795	656,878	671,391	684,755	660,537	672,223	683,500
d) Other resident sectors	1,399,842	1,803,575	1,431,327	1,431,719	1,498,921	1,473,093	1,470,934	1,494,212
Time deposits	920,578	945,999	932,320	944,352	984,293	977,859	1,001,994	1,032,460
a) Other financial corporations	37,730	38,379	34,752	38,015	57,949	50,930	46,203	53,252
b) Public non financial corporations	137,346	134,990	121,042	133,685	140,995	145,902	150,755	142,642
c) Other non financial corporations	264,058	265,044	267,343	239,881	239,116	244,533	249,198	259,494
d) Other resident sectors	481,444	507,586	509,183	532,771	546,233	536,494	555,838	577,072
Deposits Excluded from broad money	39,582	40,102	43,356	47,191	54,754	47,781	40,869	42,793
Loans	168,384	165,513	186,013	191,182	203,901	183,240	195,748	196,294
<i>Of which: other financial corporations</i>	3,817	6,629	10,797	10,329	7,231	4,261	3,985	6,681
Financial Derivatives	-	-	-	-	-	-	-	-
Central Govt. Lending Fund	9,426	9,422	9,422	9,414	9,414	9,413	9,413	9,329
Long -Term Foreign Liabilities	50	50	49	48	39	39	39	35
Shares and Other equity	411,545	398,631	403,175	405,644	452,789	470,500	475,861	477,181
a) Funds contributed by owners	209,265	223,089	224,974	228,300	237,896	247,994	239,487	248,700
b) Retained earnings	39,157	37,358	37,887	33,809	56,407	65,998	73,556	56,923
c) General & Special Reserves	145,303	117,621	117,230	119,108	137,655	138,132	143,190	156,831
d) Valuation adjustment	17,820	20,563	23,084	24,427	20,831	18,376	19,628	14,727
Other items (net)	(362,854)	(320,225)	(321,162)	(371,544)	(399,660)	(424,593)	(375,456)	(403,697)
Other liabilities	938,202	1,037,132	1,116,675	1,156,827	989,943	749,884	863,851	873,615
<i>Less: Other Assets</i>	1,301,056	1,357,357	1,437,837	1,528,371	1,389,603	1,174,477	1,239,307	1,277,312
<i>Plus Consolidation adjustment</i>	-	-	-	-	-	-	-	-

1. Including Non-residents Securities
2. General Government includes Central Government and Provincial Governments
3. Monetary Survey (Stocks) including Privatization Commission amount in Govt. Deposits
4. Provincial Governments includes Provincial Governments and Local/City Governments



2.4 Monetary Statistics

(Million Rupees)

Last Saturday/ Last working day	Currency in Circulation	Other	Currency	Banks'	Reserve	Total	Resident	Total	Broad	Money	
		Deposits	in tills of	Deposits	Money	Deposits	Foreign	Deposits	Money	Multi-	
		with	Scheduled	with	(M ₀)	Excluding	Currency	Including	(M ₂)	plier	
		SBP ¹	Banks	SBP	(1+2+3+4)	RFCDs	Deposits	RFCDs	(1+2+8)	(9/5)	
		1	2	3	4	5	6	7	8	9	10
2003	Jun.	494,577	3,499	30,415	140,990	669,481	1,454,261	126,138	1,580,399	2,078,475	3.10
	Dec.	567,519	3,495	30,273	145,224	746,511	1,557,597	135,019	1,692,616	2,263,630	3.03
2004	Jun.	578,116	2,116	36,432	156,204	772,868	1,759,566	145,694	1,905,260	2,485,492	3.22
	Dec.	655,283	5,499	38,836	196,348	895,966	1,895,052	172,493	2,067,545	2,728,327	3.05
2005	Jun.	665,901	3,335	43,472	196,302	909,010	2,111,113	180,295	2,291,408	2,960,644	3.26
	Dec.	731,749	3,327	42,527	207,750	985,352	2,266,913	189,525	2,456,438	3,191,513	3.24
2006	Jun.	740,390	4,931	48,439	207,574	1,001,334	2,466,083	195,501	2,661,584	3,406,905	3.40
	Dec.	874,260	4,798	48,367	264,356	1,191,781	2,596,030	198,719	2,794,749	3,673,807	3.08
2007	Jun.	840,181	7,012	58,072	305,169	1,210,434	3,010,650	207,312	3,217,962	4,065,155	3.36
	Dec.	1,007,831	5,153	68,371	286,560	1,367,915	3,165,819	228,042	3,393,861	4,406,846	3.22
2007	Apr.	839,602	6,099	48,218	257,617	1,151,537	2,775,664	199,955	2,975,619	3,821,320	3.32
	May.	858,309	6,136	49,860	275,035	1,189,339	2,803,603	202,807	3,006,410	3,870,856	3.25
	Jun.	840,181	7,012	58,072	305,169	1,210,434	3,010,650	207,312	3,217,962	4,065,155	3.36
	Jul.	847,083	6,226	53,416	282,376	1,189,100	2,927,867	209,106	3,136,973	3,990,282	3.36
	Aug.	845,784	5,852	53,178	272,719	1,177,533	2,948,589	212,317	3,160,905	4,012,541	3.41
	Sep.	874,919	5,454	58,176	280,010	1,218,560	3,024,749	215,048	3,239,797	4,120,170	3.38
	Oct.	917,590	5,150	57,405	276,034	1,256,179	2,975,067	220,203	3,195,271	4,118,010	3.28
	Nov.	942,631	5,103	55,132	292,145	1,295,011	2,982,783	222,533	3,205,317	4,153,051	3.21
	Dec.	1,007,831	5,153	68,371	286,560	1,367,915	3,165,819	228,042	3,393,861	4,406,846	3.22
	Jan.	989,245	5,074	56,288	255,664	1,306,270	3,074,672	232,699	3,307,371	4,301,690	3.29
	Feb.	1,001,090	5,615	54,429	275,255	1,336,389	3,094,386	231,863	3,326,249	4,332,954	3.24
	Mar.	982,001	3,850	63,761	288,535	1,338,147	3,187,355	234,882	3,422,237	4,408,088	3.29
	2008	Apr.	993,061	4,294	56,757	289,827	1,343,940	3,165,770	243,252	3,409,022	4,406,377

Source: Monetary Policy Department, SBP

1- Excluding IMF A/c Nos. 1 & 2, SAF loan account, counterpart funds, deposits of foreign central banks, foreign governments, international organizations and deposit money banks.

Note : i - Data is based on weekly returns. The quarterly data covers the period up to the last working day and the Monthly data up to the last Saturday of the month.

ii-Compilation of M1 based on weekly data has been discontinued. Now M1 is being compiled on the basis of monthly returns and is given in Table 2.1

2.5 Analysis of Causative Factors for Changes in Monetary Statistics

(Million Rupees)

	2004-05			2005-06			
	Jul.-Dec.	Jan.-Jun.	Total	Jul.-Dec.	Jan.-Jun.	Total	
1. Public Sector	28,891	62,251	91,141	64,281	22,598	86,879	
i) Budgetary support	23,763	43,389	67,152	80,232	(13,169)	67,063	
ii) Commodity operations	3,797	18,166	21,963	(15,123)	35,048	19,926	
iii) Effect of Zakat fund etc.	1,331	695	2,026	(829)	719	(110)	
2. Credit to Non-Government Sector (A+B+C)	268,907	149,792	418,699	294,145	114,255	408,401	
(A) Credit to private Sector	284,703	153,145	437,848	297,651	104,146	401,797	
i) Commercial Banks	284,581	152,149	436,730	295,864	121,548	417,411	
ii) Specialized Banks	122	996	1,118	1,787	(17,402)	(15,615)	
(B) Credit to Public Sector Enterprise (PSEs)	(11,183)	(1,506)	(12,689)	(1,994)	9,636	7,643	
i) Autonomous Bodies	(1,543)	(526)	(2,069)	(2,641)	7,396	4,755	
ii) Others	(8,886)	(128)	(9,014)	(38)	2,437	2,399	
iii) PSEs Special Account-Debt Replacement with SBP	(754)	(852)	(1,606)	686	(197)	489	
(C) Other Financial Institutions (SBP Credit to NBFIs)	(4,613)	(1,847)	(6,460)	(1,512)	473	(1,038)	
3. Counterpart Funds	(21)	109	88	14	(21)	(7)	
4. Other Items (net)	(58,244)	(30,281)	(88,525)	(60,902)	(61,514)	(122,416)	
5. Domestic Credit Expansion (+) / Contraction (-) (1+2+3+4)	239,533	181,871	421,404	297,539	75,318	372,857	
6. Foreign Assets (net)	3,302	50,446	53,748	(66,670)	140,073	73,403	
7. Monetary Expansion ((5+6)	242,834	232,318	475,152	230,869	215,392	446,260	
	2007						
	Apr.	May.	Jun.	Jul.	Aug.	Sep.	Oct.
1. Public Sector	45,065	49,305	(77,182)	35,860	49,549	(18,561)	(5,069)
i) Budgetary support(net)	49,123	9,890	(78,861)	41,317	48,661	(15,000)	(560)
ii) Commodity operations	(4,361)	39,673	1,518	(5,380)	(140)	(2,530)	(3,681)
iii) Effect of Zakat fund etc.	303	(257)	161	(77)	1,029	(1,031)	(829)
2. Credit to Non-Government Sector (A+B+C)	7,651	7,521	100,182	(54,840)	8,161	46,840	39,086
(A) Credit to private Sector	1,964	(2,785)	94,720	(54,469)	8,977	41,535	42,188
i) Commercial Banks	2,802	(3,157)	93,822	(54,805)	6,041	41,426	41,854
ii) Specialized Banks	(838)	372	898	336	2,936	109	335
(B) Credit to Public Sector Enterprise (PSEs)	5,569	10,311	5,531	(358)	(702)	4,989	(3,080)
i) Autonomous Bodies	5,674	4,037	8,479	1,121	(590)	3,552	596
ii) Others	(105)	6,282	(2,923)	(1,479)	(112)	1,437	(3,676)
iii) PSEs Special Account-Debt Replacement with SBP	0	(7)	(25)	0	0	0	0
(C) Other Financial Institutions (SBP Credit to NBFIs)	118	(6)	(69)	(13)	(115)	316	(22)
3. Counterpart Funds	0	(2)	(7)	0	(2)	0	0
4. Other Items (net)	(29,786)	(6,323)	(25,621)	(47,278)	(3,441)	61,903	(34,712)
5. Domestic Credit Expansion (+) / Contraction (-) (1+2+3+4)	22,930	50,501	(2,629)	(66,258)	54,267	90,183	(695)
6. Foreign Assets (net)	9,689	(965)	196,928	(8,615)	(32,008)	17,446	(1,465)
7. Monetary Expansion (+) / Contraction (-) (5+6)	32,619	49,536	194,299	(74,873)	22,259	107,629	(2,160)

Note 1. The composition of autonomous bodies has changed over the years. At present, WAPDA, OGDC, KESC, PTCL, PIA, and Pak. Steel are included in the autonomous bodies.

2. The data has been revised due to inclusion of privatization commission account with NBP in government deposits since Jun 2003 to Jun 2006 (half yearly basis) and Jun 2006 on monthly basis upto end-Jun 2007.

2.5 Analysis of Causative Factors for Changes in Monetary Statistics

(Million Rupees)

	2006-07			2007-08	
	Jul.-Dec.	Jan.-Jun.	Total	Jul.-Dec.	Total
1. Public Sector	19,945	72,899	92,844	201,602	201,602
i) Budgetary support	37,278	64,737	102,015	228,608	228,608
ii) Commodity operations	(15,934)	6,724	(9,210)	(26,000)	(26,000)
iii) Effect of Zakat fund etc.	(1,400)	1,438	39	(1,006)	(1,006)
2. Credit to Non-Government Sector (A+B+C)	251,333	134,371	385,705	274,964	274,964
(A) Credit to private Sector	250,782	114,936	365,718	261,353	261,353
i) Commercial Banks	248,065	115,526	363,591	259,406	259,406
ii) Specialized Banks	2,717	(589)	2,128	1,948	1,948
(B) Credit to Public Sector Enterprise (PSEs)	(1,379)	21,068	19,689	12,518	12,518
i) Autonomous Bodies	4,475	16,694	21,169	18,492	18,492
ii) Others	(5,660)	4,433	(1,227)	(5,948)	(5,948)
iii) PSEs Special Account-Debt Replacement with SBP	(194)	(59)	(253)	(25)	(25)
(C) Other Financial Institutions (SBP Credit to NBFIs)	1,930	(1,632)	298	1,092	1,092
3. Counterpart Funds	34	(7)	27	(11)	(11)
4. Other Items (net)	6,640	(101,517)	(94,877)	5,717	5,717
5. Domestic Credit Expansion (+) / Contraction (-) (1+2+3+4)	277,953	105,746	383,699	482,273	482,273
6. Foreign Assets (net)	(11,050)	285,601	274,551	(140,583)	(140,583)
7. Monetary Expansion (5+6)	266,903	391,347	658,250	341,690	341,690

	2007		2008			
	Nov.	Dec.	Jan.	Feb.	Mar.	Apr.
1. Public Sector	53,217	86,606	5,037	67,993	37,559	47,772
i) Budgetary support	60,980	93,210	3,716	64,102	12,708	24,091
ii) Commodity operations	(7,515)	(6,754)	1,311	3,596	23,780	23,772
iii) Effect of Zakat fund etc.	(248)	150	10	295	1,071	(91)
2. Credit to Non-Government Sector (A+B+C)	65,803	169,914	(11,718)	44,423	71,648	33,898
(A) Credit to private Sector	64,832	158,290	(16,310)	28,395	79,840	18,017
i) Commercial Banks	66,484	158,406	(16,800)	30,839	75,981	17,924
ii) Specialized Banks	(1,652)	(116)	490	(2,443)	3,860	93
(B) Credit to Public Sector Enterprise (PSEs)	837	10,832	4,581	15,836	(7,064)	15,833
i) Autonomous Bodies	4,181	9,632	789	4,764	(566)	(2,361)
ii) Others	(3,336)	1,218	3,792	11,073	(6,498)	18,194
iii) PSEs Special Account-Debt Replacement with SBP	(7)	(18)	0	0	0	0
(C) Other Financial Institutions (SBP Credit to NBFIs)	133	793	11	191	(1,129)	48
3. Counterpart Funds	(2)	(7)	0	(2)	0	0
4. Other Items (net)	(30,771)	60,016	(67,402)	(26,084)	2,006	(48,507)
5. Domestic Credit Expansion (+) / Contraction (-) (1+2+3+4)	88,247	316,529	(74,083)	86,328	111,213	33,162
6. Foreign Assets (net)	(53,207)	(62,734)	(31,073)	(55,064)	(36,078)	(34,874)
7. Monetary Expansion (+) /Contraction (-) (5+6)	35,040	253,795	(105,156)	31,264	75,134	(1,711)

Source: Monetary .Policy.Department.SBP

2.6 Liabilities and Assets of the State Bank of Pakistan Issue Department

(Million Rupees)

Last Saturday/ Last working day	LIABILITIES			Total Liabilities / Assets	ASSETS				Rupee Coins / Notes
	Notes held in the Banking Department	Notes in Circulation	Total		Gold and Foreign Assets			Total	
					(1) Gold Coins and Bullion	(2) Approved Foreign Exchange	(3) India Notes		
2003	Jun.	214.2	522,676.9	522,891.1	41,246.5	459,116.6	535.2	500,898.3	2,351.1
	Dec.	125.8	595,159.2	595,285.0	41,257.0	514,517.5	535.2	556,309.6	2,434.6
2004	Jun.	160.8	611,742.9	611,903.7	47,532.1	514,138.8	543.8	562,214.7	2,799.2
	Dec.	126.0	690,946.2	691,072.2	47,532.1	434,236.5	543.8	482,312.4	3,067.7
2005	Jun.	145.6	705,720.1	705,865.7	53,870.0	484,308.4	593.0	538,771.4	2,961.2
	Dec.	156.6	769,617.5	769,774.1	53,870.0	426,373.5	593.0	480,836.5	2,469.6
2006	Jun.	139.3	784,235.9	784,375.2	76,317.3	567,347.6	562.6	644,227.4	2,865.5
	Dec.	140.9	917,808.9	917,949.9	76,317.3	561,728.7	562.6	638,608.5	2,640.0
2007	Jun.	135.6	893,292.8	893,428.4	81,277.1	697,851.6	638.2	779,767.0	3,012.3
	Dec.	187.7	1,076,328.6	1,076,516.3	99,127.4	699,199.5	638.2	798,965.2	2,730.4
2007	Apr.	199.4	882,947.4	883,146.8	76,317.3	613,538.4	562.6	690,418.2	2,937.0
	May.	168.3	903,257.3	903,425.5	76,317.3	611,527.6	562.6	688,407.4	2,915.7
	Jun.	135.6	893,292.8	893,428.4	81,277.1	697,851.6	638.2	779,767.0	3,012.3
	Jul.	190.2	895,504.4	895,694.6	81,277.1	661,013.3	638.2	742,928.6	2,978.5
	Aug.	159.6	894,001.9	894,161.5	83,082.5	703,741.8	638.2	787,462.5	2,945.4
	Sep.	193.1	927,989.9	928,183.0	93,238.4	703,048.2	638.2	796,924.9	2,866.9
	Oct.	163.1	969,842.4	970,005.5	93,408.2	761,605.3	638.2	855,651.8	2,819.6
	Nov.	195.2	992,576.4	992,771.5	99,182.1	752,272.6	638.2	852,092.9	2,785.6
	Dec.	187.7	1,076,328.6	1,076,516.3	99,127.4	699,199.5	638.2	798,965.2	2,730.4
	2008	Jan.	126.0	1,040,269.2	1,040,395.2	106,361.1	686,878.0	638.2	793,877.4
Feb.		130.4	1,050,242.4	1,050,372.8	119,671.5	623,222.0	638.2	743,531.9	2,686.9
Mar.		183.1	1,041,863.2	1,042,046.3	125,700.4	570,056.8	638.2	696,395.5	2,660.3
Apr.		145.5	1,044,472.9	1,044,618.4	121,351.9	557,199.1	638.2	679,189.3	2,632.4

2.6 Liabilities and Assets of the State Bank of Pakistan Issue Department

(Million Rupees)

Last Saturday/ Last working day	ASSETS								
	Domestic Assets				With Reserve Bank of India pending transfer to Pakistan				
	Govt. of Pakistan Securities	Exchange & other Commercial Papers		Total	Gold Coins and Bullion	Sterling Securities	Govt. of India Securities	Rupee Coin	Total
2003	Jun.	18,558.7	78.5	20,988.3	671.7	316.5	12.6	3.7	1,004.5
	Dec.	35,457.8	78.5	37,970.9	671.7	316.5	12.6	3.7	1,004.5
2004	Jun.	45,671.5	78.5	48,549.2	773.1	350.1	12.8	3.8	1,139.8
	Dec.	204,473.9	78.5	207,620.1	773.1	350.1	12.8	3.8	1,139.8
2005	Jun.	162,802.6	78.5	165,842.3	876.2	357.8	13.9	4.1	1,252.0
	Dec.	285,137.5	78.5	287,685.7	876.2	357.8	13.9	4.1	1,252.0
2006	Jun.	135,585.4	78.5	138,529.4	1,240.4	360.9	13.2	3.9	1,618.4
	Dec.	275,004.4	78.5	277,722.9	1,240.4	360.9	13.2	3.9	1,618.4
2007	Jun.	108,830.3	78.5	111,921.1	1,320.9	400.1	15.0	4.4	1,740.3
	Dec.	272,714.7	78.5	275,523.6	1,608.1	400.1	15.0	4.4	2,027.5
2007	Apr.	188,094.7	78.5	191,110.1	1,240.4	360.9	13.2	3.9	1,618.4
	May.	210,405.5	78.5	213,399.7	1,240.4	360.9	13.2	3.9	1,618.4
	Jun.	108,830.3	78.5	111,921.1	1,320.9	400.1	15.0	4.4	1,740.3
	Jul.	147,968.7	78.5	151,025.7	1,320.9	400.1	15.0	4.4	1,740.3
	Aug.	101,905.4	78.5	104,929.3	1,350.2	400.1	15.0	4.4	1,769.7
	Sep.	126,378.0	78.5	129,323.4	1,515.3	400.1	15.0	4.4	1,934.7
	Oct.	109,520.9	78.5	112,419.0	1,515.3	400.1	15.0	4.4	1,934.7
	Nov.	135,786.1	78.5	138,650.2	1,609.0	400.1	15.0	4.4	2,028.4
	Dec.	272,714.7	78.5	275,523.6	1,608.1	400.1	15.0	4.4	2,027.5
	2008	Jan.	241,585.2	78.5	244,372.9	1,725.9	400.1	15.0	4.4
Feb.		301,714.8	78.5	304,480.1	1,941.4	400.1	15.0	4.4	2,360.8
Mar.		340,453.3	78.5	343,192.2	2,039.2	400.1	15.0	4.4	2,458.6
Apr.		360,330.1	78.5	363,041.0	1,968.7	400.1	15.0	4.4	2,388.1

1. Gold is valued at end financial year (June) on the basis of closing London Market Rate.

Source: Finance Department SBP

2. Approved Foreign Exchanges includes SDR held with IMF w.e.f June2004

3. Receivable from Reserve Bank of India.

2.7 Liabilities and Assets of the State Bank of Pakistan

Banking Department

(Million Rupees)

Last Saturday/ Last working day		L I A B I L I T I E S												
									D e p o s i t s					Total
									Capital Paid-up	Reserve Fund	Rural Credit Fund	Industrial Credit Fund	Export Credit Fund	
2003	Jun.	100.0	5,414.5	2,600.0	1,600.0	1,500.0	900.0	4,700.0	36,841.9	32,836.0	140,989.7	285,682.1	496,349.7	
	Dec.	100.0	5,414.5	2,600.0	1,600.0	1,500.0	900.0	4,700.0	23,879.4	30,664.6	145,224.3	282,551.3	482,319.6	
2004	Jun.	100.0	5,414.5	2,600.0	1,600.0	1,500.0	900.0	4,700.0	2,681.5	34,207.5	156,204.2	273,562.7	466,655.8	
	Dec.	100.0	5,414.5	2,600.0	1,600.0	1,500.0	900.0	4,700.0	2,272.7	44,738.5	196,347.7	290,348.5	533,707.4	
2005	Jun.	100.0	5,414.5	2,600.0	1,600.0	1,500.0	900.0	4,700.0	47,286.1	45,632.0	196,302.3	273,550.2	562,770.6	
	Dec.	100.0	15,414.5	2,600.0	1,600.0	1,500.0	900.0	4,700.0	86,850.0	58,127.1	207,749.7	273,412.8	626,139.6	
2006	Jun.	100.0	15,414.5	2,600.0	1,600.0	1,500.0	900.0	4,700.0	69,952.5	66,644.6	207,574.3	273,897.5	618,068.8	
	Dec.	100.0	34,556.5	2,600.0	1,600.0	1,500.0	900.0	4,700.0	49,197.5	50,380.5	264,356.0	272,486.9	636,420.8	
2007	Jun.	100.0	55,838.8	2,600.0	1,600.0	1,500.0	900.0	4,700.0	72,131.9	62,565.7	305,168.6	273,718.3	713,584.5	
	Dec.	100.0	64,978.6	2,600.0	1,600.0	1,500.0	900.0	4,700.0	34,481.4	22,104.5	256,759.3	277,267.5	590,612.7	
2007	Apr.	100.0	34,556.5	2,600.0	1,600.0	1,500.0	900.0	4,700.0	59,675.6	48,701.0	257,617.3	272,742.9	638,736.8	
	May.	100.0	34,556.5	2,600.0	1,600.0	1,500.0	900.0	4,700.0	57,631.8	46,543.9	275,034.5	270,712.6	649,922.8	
	Jun.	100.0	55,838.8	2,600.0	1,600.0	1,500.0	900.0	4,700.0	72,131.9	62,565.7	305,168.6	273,718.3	713,584.5	
	Jul.	100.0	55,838.8	2,600.0	1,600.0	1,500.0	900.0	4,700.0	44,950.5	43,849.0	282,375.6	273,792.2	644,967.3	
	Aug.	100.0	55,838.8	2,600.0	1,600.0	1,500.0	900.0	4,700.0	48,616.3	49,689.2	272,718.8	273,949.0	644,973.3	
	Sep.	100.0	55,838.8	2,600.0	1,600.0	1,500.0	900.0	4,700.0	24,169.2	73,953.0	280,010.3	277,320.0	655,452.5	
	Oct.	100.0	64,978.6	2,600.0	1,600.0	1,500.0	900.0	4,700.0	24,402.2	35,138.2	276,034.3	275,259.3	610,834.0	
	Nov.	100.0	64,978.6	2,600.0	1,600.0	1,500.0	900.0	4,700.0	19,087.0	32,864.2	292,144.9	277,745.8	621,841.9	
	Dec.	100.0	64,978.6	2,600.0	1,600.0	1,500.0	900.0	4,700.0	34,481.4	22,104.5	256,759.3	277,267.5	590,612.7	
2008	Jan.	100.0	64,978.6	2,600.0	1,600.0	1,500.0	900.0	4,700.0	29,879.5	49,060.7	255,663.7	277,204.2	611,808.1	
	Feb.	100.0	64,978.6	2,600.0	1,600.0	1,500.0	900.0	4,700.0	43,637.6	46,439.3	275,255.0	277,528.5	642,860.4	
	Mar.	100.0	64,978.6	2,600.0	1,600.0	1,500.0	900.0	4,700.0	40,928.6	52,995.9	285,531.0	280,686.9	660,142.4	
	Apr.	100.0	64,978.6	2,600.0	1,600.0	1,500.0	900.0	4,700.0	34,342.1	56,004.8	289,827.4	288,732.8	668,907.1	

2.7 Liabilities and Assets of the State Bank of Pakistan

Banking Department

(Million Rupees)

Last Saturday/ Last working day	LIABILITIES					Total Liabilities/ Assets	A S S E T S			
	Allocation of Special Drawing Rights	Bills Payable	Re- valuation Accounts	Other Liabi- lities	Notes and Coins ¹		Bills Purchased and Discounted			Total
							Internal			
							Export Sector	Others		
2003	Jun.	1,526.0	671.9	38,883.2	35,628.3	589,873.6	214.3	3.6	33.4	37.0
	Dec.	1,526.0	143.0	38,883.2	33,967.6	573,653.9	125.8	3.6	33.4	37.0
2004	Jun.	1,526.0	494.4	45,205.6	38,946.0	569,642.3	160.8	3.6	33.4	37.0
	Dec.	1,526.0	251.0	45,205.6	57,064.6	654,569.0	126.0	3.6	33.4	37.0
2005	Jun.	1,526.0	1,099.7	51,646.6	54,792.1	688,649.3	145.6	3.6	33.4	37.0
	Dec.	1,526.0	118.5	51,646.6	87,784.8	794,029.9	156.6	3.6	33.4	37.0
2006	Jun.	1,526.0	472.7	74,406.9	183,199.2	904,488.6	139.3	3.6	33.4	37.0
	Dec.	1,526.0	152.8	74,406.9	112,684.2	871,147.1	140.9	3.6	33.4	37.0
2007	Jun.	1,526.0	571.9	79,440.9	176,548.6	1,038,910.7	135.6	3.6	33.4	37.0
	Dec.	1,526.0	493.5	97,408.6	124,938.3	891,357.7	187.7	3.6	33.4	37.0
2007	Apr.	1,526.0	182.4	74,406.9	135,794.9	896,603.6	199.4	3.6	33.4	37.0
	May.	1,526.0	150.9	74,406.9	148,416.3	920,379.4	168.3	3.6	33.4	37.0
	Jun.	1,526.0	571.9	79,440.9	176,548.6	1,038,910.7	135.6	3.6	33.4	37.0
	Jul.	1,526.0	462.4	79,440.9	150,315.9	943,951.2	190.2	3.6	33.4	37.0
	Aug.	1,526.0	822.1	81,275.7	170,382.0	966,217.8	159.6	3.6	33.4	37.0
	Sep.	1,526.0	309.8	91,596.6	89,539.7	905,663.4	193.1	3.6	33.4	37.0
	Oct.	1,526.0	223.3	91,596.6	88,260.6	868,819.2	163.1	3.6	33.4	37.0
	Nov.	1,526.0	437.2	97,464.2	125,088.7	922,736.6	195.2	3.6	33.4	37.0
	Dec.	1,526.0	493.5	97,408.6	124,938.3	891,357.7	187.7	3.6	33.4	37.0
2008	Jan.	1,526.0	165.5	104,759.6	155,020.6	949,658.4	126.0	3.6	33.4	37.0
	Feb.	1,526.0	203.2	118,286.0	152,003.0	991,257.2	130.4	3.6	33.4	37.0
	Mar.	1,526.0	271.6	124,412.7	213,788.8	1,076,520.2	183.1	3.6	33.4	37.0
	Apr.	1,526.0	173.2	119,993.6	221,414.9	1,088,393.3	145.2	3.6	33.4	37.0

¹ Includes all coins of various denominations

(Contd.)

2.7 Liabilities and Assets of the State Bank of Pakistan Banking Department

(Million Rupees)

Last Saturday/ Last working day		A S S E T S									
		Balance held outside Pakistan			Govt. Debtor Balances	Loans and Advances to Scheduled Banks					Total (a)
		SDR held with IMF	Export Sector	Indus-trial Sector		Agri-cultural Sector	Housing Sector	Others			
2003	Jun.	104,384.6	14,092.1	-	55,686.8	2,800.3	56,780.4	66.9	15,214.1	130,548.5	
	Dec.	104,834.5	14,136.1	319.3	55,353.1	2,563.9	77,303.2	66.9	13,992.6	149,279.7	
2004	Jun.	132,021.4	-	5,533.1	58,005.3	2,328.8	88,292.3	66.9	13,194.5	161,887.8	
	Dec.	147,057.8	2,284.8	7,241.5	60,737.4	1,169.4	102,522.5	-	9,179.9	173,609.2	
2005	Jun.	139,513.0	1,774.6	10,814.0	59,753.3	1,498.5	109,446.9	-	11,288.6	181,987.3	
	Dec.	167,964.8	1,370.3	14,503.1	63,627.6	3,066.9	106,386.3	-	13,102.5	186,183.4	
2006	Jun.	121,824.0	1,088.6	16,404.3	62,194.7	7,297.3	107,982.2	-	16,104.3	193,578.5	
	Dec.	128,433.7	758.6	6,560.1	63,183.5	41,382.5	131,733.6	-	14,416.2	250,715.8	
2007	Jun.	152,719.3	418.5	10,820.4	62,228.2	42,149.7	134,621.3	-	14,420.1	253,419.3	
	Dec.	151,435.5	314.0	23,628.8	57,776.5	40,386.3	100,060.1	-	14,232.1	212,455.0	
2007	Apr.	125,611.0	704.4	12,722.1	60,183.5	41,776.6	138,364.0	-	14,418.2	254,742.3	
	May.	136,311.1	631.8	10,268.3	60,183.5	42,205.8	138,394.0	-	14,418.2	255,201.5	
	Jun.	152,719.3	418.5	10,820.4	62,228.2	42,149.7	134,621.3	-	14,420.1	253,419.3	
	Jul.	190,034.2	421.6	12,125.6	58,228.2	41,605.6	137,866.5	-	14,420.1	252,120.4	
	Aug.	160,347.1	394.3	12,715.6	58,192.1	41,088.5	120,836.8	-	14,420.1	234,537.5	
	Sep.	183,923.8	367.3	11,562.7	57,955.9	40,014.7	100,461.2	-	14,232.1	212,663.9	
	Oct.	141,161.4	370.0	13,306.2	57,955.9	39,625.8	100,159.6	-	14,232.1	211,973.4	
	Nov.	142,185.0	319.4	14,347.2	57,856.0	40,094.4	100,582.4	-	14,232.1	212,764.8	
	Dec.	151,435.5	314.0	23,628.8	57,776.5	40,386.3	100,060.1	-	14,232.1	212,455.0	
2008	Jan.	136,422.8	103.2	16,287.2	57,777.3	39,724.9	97,606.1	-	14,233.9	209,342.2	
	Feb.	140,671.2	83.4	17,270.9	49,777.3	39,593.4	97,357.4	-	14,233.9	200,962.0	
	Mar.	150,526.5	58.0	17,434.2	49,777.5	40,624.3	94,889.2	-	14,233.9	199,524.9	
	Apr.	137,422.3	60.6	18,030.9	49,777.3	39,854.8	98,264.3	-	14,233.9	202,130.3	

2.7 Liabilities and Assets of the State Bank of Pakistan

Banking Department

(Concl'd.)
(Million Rupees)

Last Saturday/ Last working day	A S S E T S											
	Loans and Advances to Non-Bank Financial Institutions				Other Loans And Advances (a+b)	I n v e s t m e n t s					Other Assets	
	Indus- trial Sector	Housing Sector	Others	Total (b)		Sche- duled Banks	Non-Bank Financial Institutions	Govt. Securities	Others	Total		
2003	Jun.	5,191.0	14,157.3	8,037.5	27,385.8	157,934.3	38,954.7	2,497.1	91,753.6	907.6	134,112.9	179,098.3
	Dec.	4,440.4	13,857.3	4,786.7	23,084.4	172,364.1	38,954.7	2,497.1	36,747.5	907.6	79,106.9	202,730.2
2004	Jun.	4,418.0	12,607.3	4,219.8	21,245.1	183,132.9	34,000.8	1,747.1	87,524.9	1,291.2	124,564.0	124,193.1
	Dec.	608.1	12,607.3	3,416.7	16,632.1	190,241.3	34,000.8	1,747.1	149,989.0	1,331.2	187,068.1	120,512.6
2005	Jun.	595.0	11,242.3	3,416.7	15,254.0	197,241.4	28,273.8	1,673.4	168,392.0	933.5	199,272.6	139,850.8
	Dec.	358.3	11,242.3	2,141.7	13,742.3	199,925.7	28,273.8	1,673.4	249,452.0	890.9	280,290.1	129,782.4
2006	Jun.	831.7	11,242.3	2,141.7	14,215.7	207,794.2	24,664.3	1,673.4	380,997.3	1,043.2	408,378.1	148,823.1
	Dec.	2,832.0	11,242.3	2,071.7	16,146.0	266,861.8	25,104.3	1,673.4	292,215.7	1,029.5	320,022.9	148,332.1
2007	Jun.	2,831.3	11,242.3	-	14,073.6	267,492.9	18,058.5	2,113.4	351,843.9	1,051.0	373,066.8	234,220.1
	Dec.	2,784.4	11,242.3	-	14,026.7	226,481.7	15,568.9	3,313.4	299,369.8	1,126.0	319,378.0	169,895.0
2007	Apr.	2,906.2	11,242.3	-	14,148.5	268,890.8	24,664.3	2,113.4	306,639.3	1,019.6	334,436.5	154,002.5
	May	2,900.6	11,242.3	-	14,142.9	269,344.4	24,664.3	2,113.4	301,036.0	1,017.4	328,831.0	174,787.5
	Jun.	2,831.3	11,242.3	-	14,073.6	267,492.9	18,058.5	2,113.4	351,843.9	1,051.0	373,066.8	234,220.1
	Jul.	2,818.7	11,242.3	-	14,061	266,181.4	17,067.6	2,113.4	261,352.2	1,051.0	281,584.2	193,377.2
	Aug.	2,704.0	11,242.3	-	13,946.3	248,483.8	17,467.6	2,113.4	345,222.4	1,051.0	365,854.4	178,226.0
	Sep.	2,620.1	11,242.3	-	13,862.4	226,526.3	17,067.6	2,513.4	288,071.6	1,051.0	308,703.6	174,349.6
	Oct.	2,598.5	11,242.3	-	13,840.8	225,814.2	17,067.6	2,513.4	295,887.4	1,051.0	316,519.4	171,447.9
	Nov.	2,731.7	11,242.3	-	13,974.0	226,738.8	15,568.9	2,513.4	359,625.6	1,051.0	378,758.8	160,155.4
	Dec.	2,784.4	11,242.3	-	14,026.7	226,481.7	15,568.9	3,313.4	299,369.8	1,126.0	319,378.0	169,895.0
	2008	Jan.	2,735.4	11,242.3	-	13,977.7	223,319.9	16,068.9	3,313.4	396,402.4	1,126.0	416,910.6
Feb.		2,926.6	11,242.3	-	14,168.9	215,130.9	16,068.8	3,313.4	439,709.3	1,126.0	460,217.5	157,716.0
Mar.		1,332.2	11,242.3	-	12,574.5	212,099.4	15,568.9	3,813.4	482,455.5	1,049.5	502,887.2	193,295.0
Apr.		1,345.3	11,242.3	-	12,587.6	214,717.9	15,568.9	3,813.4	533,924.4	1,049.5	554,356.2	163,623.0

Source: Finance Department SBP

2.8 Scheduled Bank's Consolidated Position

Based on weekly position Liabilities & Assets (All Banks)

(Million Rupees)

Financial Position	2005	2006		2007				
	Dec.	Jun.	Dec.	Apr.	May.	Jun.	Jul.	Aug.
ASSETS								
Cash & Balances With Treasury Banks	270,185	273,896	332,452	320,915	337,580	397,352	353,082	339,226
Balances With Other Banks	111,638	120,345	140,575	167,425	148,960	200,104	184,321	154,169
Lending To Financial Institutions	198,618	226,451	192,343	199,604	171,253	269,120	191,190	187,130
Investments - Net	730,067	794,584	775,546	1,022,787	1,048,978	1,115,913	1,167,897	1,197,115
Advances – Net of Provision	1,908,067	2,005,658	2,281,866	2,253,633	2,296,813	2,350,810	2,296,412	2,293,617
Gross Advances	2,043,982	2,127,388	2,409,478	2,387,597	2,430,090	2,484,495	2,429,398	2,426,759
Less: Provision for Non- Performing Advances	135,914	121,730	127,611	133,964	133,277	133,686	132,986	133,143
Operating Fixed Assets	65,856	72,659	107,745	122,336	124,047	127,031	128,366	129,641
Deferred Tax Assets	8,258	6,760	7,988	7,984	8,047	8,144	8,067	8,109
Other Assets	167,386	172,644	217,731	202,416	193,673	233,167	213,172	211,121
TOTAL ASSETS	3,460,076	3,672,997	4,056,246	4,297,101	4,329,351	4,701,641	4,542,508	4,520,126
LIABILITIES								
Bills Payable	45,404	47,282	55,177	53,570	50,674	56,992	57,972	58,180
Borrowings	336,301	361,080	420,080	426,994	403,459	497,065	420,608	379,476
Deposits and Other Accounts	2,661,697	2,786,731	2,999,895	3,177,075	3,226,117	3,460,811	3,383,373	3,403,170
Sub-ordinated Loans	20,723	21,721	26,967	27,744	27,743	27,488	27,487	27,623
Liabilities Against Assets Subject to Finance Lease	619	740	898	893	1,022	1,068	1,038	1,035
Other Liabilities	122,605	133,514	150,308	154,097	155,726	165,221	161,080	160,233
Deferred Tax Liabilities	2,473	8,554	7,357	8,766	8,830	8,700	8,155	8,520
TOTAL LIABILITIES	3,189,822	3,359,621	3,660,683	3,849,139	3,873,572	4,217,345	4,059,713	4,038,238
NET ASSETS	270,254	313,376	395,563	447,963	455,780	484,296	482,795	481,888
REPRESENTED BY:								
Paid up Capital / Head Office Capital Account	105,789	119,860	165,477	186,320	190,642	205,895	207,528	207,524
Reserves	70,754	89,780	102,928	124,501	129,967	129,050	129,023	129,922
Unappropriated / Unremitted Profit	36,397	33,428	63,520	63,858	57,656	68,707	72,197	78,086
Surplus/ (Deficit) On Revaluation Of Assets	57,314	70,308	63,638	73,283	77,514	80,645	74,046	66,356
TOTAL	270,254	313,376	395,563	447,963	455,780	484,296	482,795	481,888

Format of weekly statement of position has been redesigned from the month of July 05.

2.8 Scheduled Bank's Consolidated Position

Based on weekly position Liabilities & Assets (All Banks)

(Million Rupees)

Financial Position	2007					2008		
	Sep.	Oct.	Nov.	Dec.	Jan.	Feb.	Mar.	Apr.
ASSETS								
Cash & Balances With Treasury Banks	356,764	347,539	361,142	343,718	329,250	354,345	366,313	374,557
Balances With Other Banks	160,422	144,473	126,514	134,651	113,601	114,317	124,899	113,389
Lending To Financial Institutions	188,512	195,366	225,555	213,872	204,691	218,375	244,966	228,993
Investments - Net	1,245,411	1,243,254	1,213,543	1,210,920	1,201,526	1,163,455	1,107,028	1,060,154
Advances – Net of Provision	2,316,858	2,345,740	2,397,616	2,505,900	2,518,078	2,562,216	2,635,298	2,689,720
Gross Advances	2,450,713	2,482,220	2,535,759	2,651,173	2,684,089	2,734,642	2,812,732	2,870,619
Less: Provision for Non-Performing Advances	133,855	136,480	138,143	145,272	166,011	172,426	177,435	180,899
Operating Fixed Assets	131,227	134,079	135,916	146,135	176,424	182,468	183,539	199,810
Deferred Tax Assets	5,789	5,886	9,360	10,849	16,287	15,246	16,341	16,920
Other Assets	255,414	238,769	238,749	262,530	258,524	251,966	261,662	257,687
TOTAL ASSETS	4,660,397	4,655,106	4,708,395	4,828,576	4,818,381	4,862,389	4,940,045	4,941,230
LIABILITIES								
Bills Payable	63,870	59,748	59,777	69,242	61,888	56,169	63,154	57,618
Borrowings	394,459	405,156	432,859	439,335	427,231	447,042	456,102	428,801
Deposits and Other Accounts	3,464,687	3,451,075	3,478,385	3,565,537	3,574,788	3,591,861	3,628,142	3,650,050
Sub-ordinated Loans	26,790	26,790	27,539	27,171	27,171	29,790	37,582	41,506
Liabilities Against Assets Subject to Finance Lease	978	972	947	886	867	864	793	762
Other Liabilities	192,364	188,495	181,073	175,317	169,870	173,316	194,285	181,720
Deferred Tax Liabilities	10,642	10,637	9,496	9,921	10,246	11,694	12,360	14,407
TOTAL LIABILITIES	4,153,789	4,142,872	4,190,075	4,287,409	4,272,060	4,310,737	4,392,418	4,374,863
NET ASSETS	506,607	512,234	518,320	541,167	546,321	551,652	547,626	566,367
REPRESENTED BY:								
Paid up Capital / Head Office Capital Account	223,103	224,163	225,815	228,874	236,847	239,387	246,379	249,963
Reserves	104,591	104,056	107,643	108,921	116,624	118,207	130,699	131,606
Unappropriated / Unremitted Profit	107,071	107,377	108,608	115,538	109,376	111,059	89,138	91,304
Surplus/ (Deficit) On Revaluation Of Assets	71,843	76,638	76,254	87,835	83,474	82,999	81,410	93,493
TOTAL	506,607	512,234	518,320	541,167	546,321	551,652	547,626	566,367

Source: Finance Department SBP

2.9 Scheduled Banks' Liquidity Position

All Banks¹

(Million Rupees)

Last Saturday	LIQUID LIABILITIES IN PAKISTAN			LIQUID ASSETS MAINTAINED IN PAKISTAN				
	Demand Liabilities	Time Liabilities	Total	Cash in Pakistan	Balance With SBP	Balance With Agents of SBP	Unencumbered Approved Securities ²	
2003	Jun.	810,812	889,173	1,699,985	30,926	155,472	5,987	574,986
	Dec.	917,242	906,630	1,823,872	33,682	122,610	3,661	532,752
2004	Jun.	958,869	965,782	1,924,652	33,908	162,595	4,689	484,641
	Dec.	1,062,884	995,135	2,058,019	39,440	126,506	4,186	408,263
2005	Jun.	1,131,465	1,138,439	2,269,904	42,461	120,668	5,621	529,035
	Dec.	1,289,884	1,244,768	2,534,652	50,145	146,530	15,173	515,681
2006	Jun.	1,281,332	1,421,594	2,702,926	55,454	159,210	7,529	567,416
	Dec.	2,314,909	693,303	3,008,212	61,755	215,476	16,473	567,984
2007	Jun.	2,837,195	566,181	3,403,376	76,609	253,059	24,369	821,057
	Dec.	3,009,848	476,569	3,486,417	85,334	223,426	11,605	812,343
2007	Mar.	2,601,704	528,142	3,129,846	63,405	213,311	9,183	716,324
	Apr.	2,613,725	542,664	3,156,389	63,644	210,343	7,574	769,524
	May.	2,605,793	555,448	3,161,241	61,071	239,941	8,187	788,340
	Jun.	2,837,195	566,181	3,403,376	76,609	253,059	24,369	821,057
	Jul.	2,743,212	574,834	3,318,046	69,623	241,468	8,629	882,002
	Aug.	2,910,754	428,109	3,338,863	69,694	219,393	7,591	923,543
	Sep.	2,988,730	451,468	3,440,198	73,539	234,889	10,296	873,481
	Oct.	2,905,357	436,512	3,341,869	69,803	222,413	8,467	860,554
	Nov.	2,909,956	463,566	3,373,522	69,645	238,143	8,609	840,197
	Dec.	3,009,848	476,569	3,486,417	85,334	223,426	11,605	812,343
2008	Jan.	2,987,951	495,691	3,483,642	71,209	221,509	9,019	839,135
	Feb.	2,996,277	513,613	3,509,890	67,038	249,753	8,359	792,137
	Mar.	3,014,867	541,722	3,556,589	65,052	260,815	9,361	761,002

2.9 Scheduled Banks' Liquidity Position

All Banks¹

(Million Rupees)

Last Saturday	LIQUID ASSETS MAINTAINED IN PAKISTAN						Minimum of Assets required to be held under Section 29 of the Banking Companies Ordinance	Excess of Assets being held over the minimum required under Section 29 of the Banking Companies Ordinance
	Foreign Banks Deposits with SBP under section 13(3) of the Banking Companies Ordinance				Share Capital M F B	Total		
	Cash	Unencumbered Approved Securities ²	Foreign Currency	Total				
2003	Jun.	60	936	19,828	1,705	789,900	339,997	449,903
	Dec.	560	327	18,799	1,705	714,096	364,774	349,322
2004	Jun.	190	3,601	10,341	1,705	701,670	382,784	318,886
	Dec.	60	129	14,280	1,705	594,569	408,376	186,193
2005	Jun.	60	4,239	15,919	1,675	719,678	450,694	268,984
	Dec.	156	4,020	17,660	1,705	751,070	503,471	247,599
2006	Jun.	156	4,014	19,172	1,705	814,656	537,716	276,940
	Dec.	156	3,981	13,524	1,685	881,034	719,116	161,918
2007	Jun.	0	727	13,397	1,655	1,190,873	821,095	369,778
	Dec.	0	0	10,867	1,658	1,145,233	828,870	316,363
2007	Mar.	156	0	13,941	1,655	1,017,975	755,439	262,536
	Apr.	0	654	13,442	1,655	1,066,836	761,307	305,529
	May.	0	626	13,347	1,655	1,113,167	761,460	351,707
	Jun.	0	727	13,397	1,655	1,190,873	821,095	369,778
	Jul.	0	718	13,395	1,655	1,217,490	798,876	418,614
	Aug.	0	0	13,395	1,655	1,235,271	809,375	425,896
	Sep.	0	0	10,867	1,658	1,204,730	833,296	371,434
	Oct.	0	0	10,867	1,658	1,173,762	796,205	377,557
	Nov.	0	0	10,867	1,658	1,169,119	802,235	366,884
	Dec.	0	0	10,867	1,658	1,145,233	828,870	316,363
2008	Jan.	0	0	11,318	1,658	1,153,848	826,986	326,862
	Feb.	0	0	11,318	1,658	1,130,264	862,262	268,002
	Mar.	0	0	11,330	1,658	1,109,257	871,631	237,626

1 Excluding Indian Banks

Source: Off-Site Supervision Enforcement Department SBP

2 Valued at a price not exceeding current market price

Note : Figures of Demand and Time Liabilities of Scheduled Banks shown in this table may not tally with the corresponding provisional figures appearing in the table 2.7

MFB : Macro Finance Bank (Khushali Bank)

2.10 NBFCs Consolidated Financial Position

(Million Rupees)

Assets/ Liabilities	Mar.07 ^P			Jun.07 ^P		
	DFIs	NBFCs	Total	DFIs	NBFCs	Total
1. Currency and Deposits	17,299	47,972	65,271	11,206	89,838	101,044
a. Currency	51	260	311	60	1,370	1,430
b. Transferable Deposits	0	35,775	35,775	0	65,169	65,169
c. Restricted Deposits	0	2,074	2,074	0	3,474	3,474
d. Other Deposits	17,248	9,863	27,111	11,146	19,825	30,971
2. Investment in securities other than shares	18,656	18,775	37,431	20,044	27,349	47,393
a. Short-term	5,272	3,272	8,544	4,420	6,642	11,062
b. Long-term	13,384	15,503	28,887	15,624	20,707	36,331
3. Loans extended (Advances)	49,950	118,010	167,960	54,197	146,936	201,133
a. Short-term	0	31,805	31,805	0	53,607	53,607
b. Long-term	49,950	86,205	136,155	54,197	93,329	147,526
4. Investment in shares	24,218	142,907	167,125	29,216	174,001	203,217
a. Quoted	24,218	140,557	164,775	29,216	172,438	201,654
b. Non quoted	0	2,350	2,350	0	1,563	1,563
5. Insurance Technical Reserve	0	0	0	0	0	0
a. Life	0	0	0	0	0	0
b. Non-life	0	0	0	0	0	0
6. Financial Derivatives	0	1,919	1,919	0	2,107	2,107
7. Other accounts receivable	7,931	21,999	29,930	7,344	26,154	33,498
8. Non-financial assets	0	8,606	8,606	0	9,021	9,021
a. Produced assets	0	5,502	5,502	0	5,949	5,949
i. Fixed assets	0	4,823	4,823	0	5,397	5,397
ii. Inventories	0	294	294	0	291	291
iii. Valuables	0	0	0	0	0	0
iv. Other produced assets	0	385	385	0	261	261
b. Non-produced assets	0	3,104	3,104	0	3,072	3,072
i. Land	0	1,478	1,478	0	1,740	1,740
ii. Other-non-produced assets	0	1,626	1,626	0	1,332	1,332
Total Assets/ Liabilities	118,054	360,188	478,242	122,009	475,406	597,415
1. Deposits	26,134	25,822	51,956	24,841	29,323	54,164
a. Restricted deposits	0	10,150	10,150	0	12,373	12,373
b. Other deposits	26,134	15,672	41,806	24,841	16,950	41,791
2. Securities other than shares (bonds/debentures etc)	0	7,430	7,430	0	10,866	10,866
a. Short-term	0	1,947	1,947	0	2,873	2,873
b. long-term	0	5,483	5,483	0	7,993	7,993
3. Loans (Borrowings)	49,778	63,134	112,912	48,389	68,251	116,640
a. Short-term	225	22,998	23,223	1,030	26,926	27,956
b. Long-term	49,553	40,136	89,689	47,359	41,325	88,684
4. Financial Derivatives	0	1,338	1,338	0	1,350	1,350
5. Other accounts payable	3,362	36,294	39,656	3,427	49,645	53,072
6. Shares and other equity	38,781	226,170	264,951	45,353	315,971	361,324
a. Quoted	19,395	112,455	131,850	19,745	157,168	176,913
b. Non quoted	0	34,256	34,256	0	46,254	46,254
c. Retained earnings	0	54,059	54,059	0	57,540	57,540
d. Current year result	658	7,177	7,835	1,876	20,532	22,408
e. General and special reserves	18,728	20,525	39,253	23,731	33,275	57,006
f. Valuation adjustments	0	-2,302	-2,302	0	1,202	1,202

2.10 NBFCs Consolidated Financial Position

(Million Rupees)

Assets/ Liabilities	Sep.07 ^P			Dec.07 ^P		
	DFIs	NBFCs	Total	DFIs	NBFCs	Total
1. Currency and Deposits	13,981	84,792	98,773	20,117	80,371	100,488
a. Currency	52	1,275	1,327	0	2,630	2,630
b. Transferable Deposits	3,266	60,496	63,762	4,467	52,361	56,828
c. Restricted Deposits	208	3,349	3,557	74	3,981	4,055
d. Other Deposits	10,455	19,672	30,127	15,576	21,399	36,975
2. Investment in securities other than shares	14,400	36,001	50,401	16,121	48,645	64,766
a. Short-term	2,121	6,810	8,931	2,760	10,093	12,853
b. Long-term	12,279	29,191	41,470	13,361	38,552	51,913
3. Loans extended (Advances)	64,426	141,949	206,375	48,108	141,793	189,901
a. Short-term	16,783	58,981	75,764	17,303	53,710	71,013
b. Long-term	47,643	82,968	130,611	30,805	88,083	118,888
4. Investment in shares	32,978	179,360	212,338	23,524	198,120	221,644
a. Quoted	28,515	175,718	204,233	21,769	194,767	216,536
b. Non quoted	4,463	3,642	8,105	1,755	3,353	5,108
5. Insurance Technical Reserve	0	0	0	0	0	0
a. Life	0	0	0	0	0	0
b. Non-life	0	0	0	0	0	0
6. Financial Derivatives	0	1,452	1,452	0	1,032	1,032
7. Other accounts receivable	3,495	24,962	28,457	4,101	32,930	37,031
8. Non-financial assets	3,559	10,170	13,729	2,981	13,608	16,589
a. Produced assets	3,540	6,263	9,803	2,754	7,092	9,846
i. Fixed assets	3,540	5,761	9,301	2,754	6,450	9,204
ii. Inventories	0	79	79	0	139	139
iii. Valuables	0	0	0	0	0	0
iv. Other produced assets	0	423	423	0	503	503
b. Non-produced assets	19	3,907	3,926	227	6,516	6,743
i. Land	19	2,766	2,785	227	3,013	3,240
ii. Other-non-produced assets	0	1,141	1,141	0	3,503	3,503
Total Assets/ Liabilities	132,839	478,687	611,526	114,952	516,499	631,451
1. Deposits	25,220	30,035	55,255	15,597	31,533	47,130
a. Restricted deposits	1,207	13,324	14,531	200	11,964	12,164
b. Other deposits	24,013	16,711	40,724	15,397	19,569	34,966
2. Securities other than shares (bonds/debentures etc)	5,083	11,175	16,258	5,083	11,927	17,010
a. Short-term	333	1,685	2,018	333	3,046	3,379
b. long-term	4,750	9,490	14,240	4,750	8,881	13,631
3. Loans (Borrowings)	47,828	57,088	104,916	42,663	62,290	104,953
a. Short-term	26,483	25,638	52,121	21,466	31,781	53,247
b. Long-term	21,345	31,450	52,795	21,197	30,509	51,706
4. Financial Derivatives	0	961	961	0	775	775
5. Other accounts payable	8,521	40,013	48,534	6,973	42,431	49,404
6. Shares and other equity	46,187	339,414	385,601	44,636	367,543	412,179
a. Quoted	5,653	204,845	210,498	2,000	207,486	209,486
b. Non quoted	20,892	36,416	57,308	25,993	40,803	66,796
c. Retained earnings	3,557	58,794	62,351	3,971	60,229	64,200
d. Current year result	1,231	3,665	4,896	1,959	17,594	19,553
e. General and special reserves	11,012	29,662	40,674	7,786	36,376	44,162
f. Valuation adjustments	3,842	6,032	9,874	2,927	5,055	7,982

NBFCs Non Bank Financial Companies
DFIs Development Finance Institutions

2.11 Classification of Deposits with NBFCs

(Million Rupees)

Sector	September 07 ^P			December 07 ^P		
	Depository	Non-Depository	Total	Depository	Non-Depository	Total
1 Non-financial Corporations	15,344	254	15,598	12,797	270	13,067
i Public	2,999	79	3,078	1,931	82	2,013
ii Private	12,345	175	12,520	10,866	188	11,054
2 Financial Corporations	28,268	0	28,268	27,838	59	27,897
i Central Bank	0	0	0	0	0	0
ii Deposit money institutions	17,848	0	17,848	18,870	59	18,929
ii Other deposit accepting institutions	7,124	0	7,124	5,671	0	5,671
iv Financial intermediaries	2,119	0	2,119	2,108	0	2,108
v Financial auxiliaries	249	0	249	246	0	246
vi Insurance and pension funds	928	0	928	943	0	943
3 Central Government	57	0	57	803	0	803
4 Provincial Governments	23	0	23	24	0	24
5 Local Governments	0	0	0	0	0	0
6 Household	10,984	5	10,989	5,047	5	5,052
7 Non-profit Institutions (NPIs) Serving Households	315	0	315	282	0	282
8 Non-residents	5	0	5	5	0	5
9 Foreign Currency	0	0	0	0	0	0
Total	54,996	259	55,255	46,796	334	47,130

2.12 Classification of NBFC's Loans Extended(Advances)

(Million Rupees)

Sector	September 07 ^P			December 07 ^P		
	Depository	Non-Depository	Total	Depository	Non-Depository	Total
1 Non-financial corporations	89,674	8,971	98,645	83,901	8,948	92,849
i Public	1,661	363	2,024	5,392	361	5,753
ii Private	88,013	8,608	96,621	78,509	8,587	87,096
2 Financial Corporations	20,198	39,903	60,101	19,562	33,878	53,440
i Central Bank	0	0	0	0	0	0
ii Deposit money institutions	9,986	7,708	17,694	7,301	3,024	10,325
ii Other deposit accepting institutions	5,104	5,566	10,670	8,783	6,017	14,800
iv Financial intermediaries	844	8,902	9,746	208	5,031	5,239
v Financial auxiliaries	4,206	17,725	21,931	3,222	19,803	23,025
vi Insurance and pension funds	58	2	60	48	3	51
3 Central Government	2	0	2	1	0	1
4 Provincial Governments	0	0	0	0	0	0
5 Local Governments	0	0	0	0	0	0
6 Household	30,414	138	30,552	24,662	138	24,800
7 Non-profit Institutions (NPIs) Serving Households	19	0	19	19	0	19
8 Non-Residents	0	0	0	0	0	0
9 Bills purchased and discounted (inland bills)	50	121	171	0	105	105
10 Other Advances and Financial Leases	9,383	7,505	16,888	10,582	8,105	18,687
Total	149,740	56,638	206,378	138,727	51,174	189,901

2.13 Classification of NBFC's Investments in Securities and Shares

(Million Rupees)

Securities/Shares	September 07 ^P			December 07 ^P		
	Depository	Non- Depository	Total	Depository	Non- Depository	Total
A. Securities	21,749	28,652	50,401	23,491	41,275	64,766
1 Non-financial Corporations	6,205	14,164	20,369	9,659	22,676	32,335
i Public	1,241	1,420	2,661	1,552	3,534	5,086
ii Private	4,964	12,744	17,708	8,107	19,142	27,249
2 Financial Corporations	4,233	11,262	15,495	4,808	12,636	17,444
i Central Bank	-	-	-	-	-	-
ii Deposit money institutions	2,695	5,076	7,771	3,292	5,725	9,017
ii Other deposit accepting institutions	1,081	2,741	3,822	1,001	2,835	3,836
iv Financial intermediaries	457	3,445	3,902	515	4,076	4,591
v Financial auxiliaries	-	-	-	-	-	-
vi Insurance and pension funds	-	-	-	-	-	-
3 Central Government	10,998	3,226	14,224	8,771	5,963	14,734
4 Provincial Governments	-	-	-	-	-	-
5 Local Governments	-	-	-	-	-	-
6 Household	-	-	-	-	-	-
7 Non-profit institutions (NPIs) Serving Households	-	-	-	-	-	-
8 Non-Residents	-	-	-	-	-	-
9 Foreign Currency	313	-	313	253	-	253
B. Shares	44,596	167,743	212,339	35,788	185,856	221,644
1 Non-financial Corporations	24,181	151,728	175,909	20,640	165,461	186,101
i Public	6,079	128,811	134,890	4,454	140,795	145,249
ii Private	18,102	22,917	41,019	16,186	24,666	40,852
2 Financial Corporations	19,389	15,791	35,180	14,737	20,172	34,909
i Central Bank	-	-	-	-	-	-
ii Deposit money institutions	11,223	6,404	17,627	10,068	8,619	18,687
ii Other deposit accepting institutions	1,198	2,384	3,582	1,858	2,583	4,441
iv Financial intermediaries	6,338	5,416	11,754	2,284	7,262	9,546
v Financial auxiliaries	118	5	123	118	49	167
vi Insurance and pension funds	512	1,582	2,094	409	1,659	2,068
3 Central Government	-	-	-	-	-	-
4 Provincial Governments	-	-	-	-	-	-
5 Local Governments	-	-	-	-	-	-
6 Household	-	-	-	-	-	-
7 Non-profit institutions (NPIs) Serving Households	-	-	-	-	-	-
8 Non-residents	1,026	223	1,249	411	223	634
Total (A+B)	66,345	196,395	262,740	59,279	227,131	286,410

2.14 Currency in Circulation

(Million Rupees)

END OF PERIOD	Subsidiary Coins	One Rupee Coins and above	Five Rupee Bills & above	Total (1+2+3)	Held by Banking Department of SBP	Held by Issue Department of SBP	Currency In tills of Scheduled Banks	Currency In Circulation (4-5-6-7)	
		2	3	4	5	6	7	8	
		1	2	3	4	5	6	7	8
2003	Jun.	662	4,004	522,891	527,558	214	2,351	30,415	494,577
	Dec.	662	4,405	595,285	600,352	126	2,435	30,273	567,517
2004	Jun.	664	4,941	611,904	617,508	161	2,799	36,432	578,116
	Dec.	667	5,574	691,072	697,313	126	3,068	38,836	655,283
2005	Jun.	667	6,093	705,720	712,480	146	2,961	43,472	665,901
	Dec.	667	6,618	769,617	776,902	157	2,470	42,527	731,749
2006	Jun.	667	6,931	784,236	791,834	139	2,865	48,439	740,391
	Dec.	667	6,933	917,809	925,408	141	2,640	48,367	874,260
2007	Jun.	667	7,441	893,293	901,401	136	3,012	58,072	840,181
	Dec.	667	7,461	1,070,960	1,079,088	156	2,730	68,371	1,007,831
2007	Apr.	667	7,342	882,947	890,957	199	2,937	48,218	839,602
	May.	667	7,329	903,257	911,253	168	2,916	49,860	858,309
	Jun.	667	7,441	893,293	901,401	136	3,012	58,072	840,181
	Jul.	667	7,496	895,504	903,667	190	2,978	53,416	847,083
	Aug.	667	7,398	894,002	902,067	160	2,945	53,178	845,784
	Sep.	667	7,499	927,990	936,156	193	2,867	58,176	874,919
	Oct.	667	7,469	969,842	977,978	163	2,820	57,405	917,590
	Nov.	667	7,501	992,576	1,000,744	195	2,786	55,132	942,631
	Dec.	667	7,461	1,070,960	1,079,088	156	2,730	68,371	1,007,831
	Jan.	667	7,432	1,040,269	1,048,368	126	2,709	56,288	989,245
	Feb.	667	7,428	1,050,242	1,058,337	130	2,687	54,429	1,001,090
	Mar.	667	7,501	1,040,450	1,048,617	196	2,659	63,761	982,001
2008	Apr.	667	7,457	1,044,473	1,052,596	146	2,632	56,757	993,061

Note The quarter end data relate to last working day whereas monthly data are of last Saturday of the month
 Source: Monetary. Policy Department SBP
 Totals may not tally due to separate rounding off.

2.15 Government Budgetary Borrowing from Banks

(Million Rupees)

Item	Stocks		Monetary Impact During	
	30-Jun-07	30-Jun-06	Ist July 07 to 31 st Apr. 2008	Ist July 07 to 31 st Apr. 2007
1. Central Government (a+b)	1,014,152	875,718	333,599	175,549
a. Scheduled Banks	617,528	422,156	-137,559	186,624
T-Bills and Securities	830,347	589,552	-102,024	200,566
Less:				
Government Deposits	212,819	167,396	35,535	13,942
b. State Bank	396,624	453,563	471,158	-11,075
T-bills and Securities etc.	461,619	517,507	433,579	-21,859
Debtor Balances (Excluding Zakat Fund)	0	0	0	0
Less:				
Government Deposits (Excluding Zakat and Privatization Fund)	78,430	76,865	-37,573	-10,433
Others	-13,435	-12,921	-6	-351
2. Provincial Governments (c+d)	-204,099	-167,681	-373	-4,561
c. Scheduled Banks	-152,466	-117,684	-14,165	-18,687
Government and Others	1,100	1,101	0	-1
Less:				
Government Deposits	153,566	118,785	14,165	18,686
d. State Bank	-51,633	-49,997	13,792	14,126
Government Securities	0	0	0	0
Debtor Balances (Excluding Zakat Fund)	10,821	16,404	7,223	-3,680
Less:				
Government Deposits (Excluding Zakat Fund)	62,454	66,401	-6,569	-17,805
Net Budgetary Borrowing from the Banking System	810,053	708,037	333,226	170,987

Source: Monetary Policy Department, SBP

2.16 Government Borrowing for Commodity Operations

(Million Rupees)

Commodity	Stocks		Monetary Impact During	
	30-Jun-07	30-Jun-06	Ist July 07 to 31 st Apr 08	Ist July 07 to 31 st Apr .07
Rice	2,224	3,461	-2,215	-1,238
Wheat	62,049	73,127	21,432	-53,258
Sugar	25,285	18,082	4,361	8,310
Fertilizer	6,227	6,544	1,614	-311
Seeds	95	252	-95	-252
Oilseeds	0	0	0	0
Pulses	106	10	-106	0
Edible Oil	1,266	1,842	-1,256	-577
Black Mash	57	0	716	124
Chillies	0	0	0	0
S. Meal	27	82	-27	-55
Gram	0	34	2,003	-20
Onion	50	151	-50	-101
Potatoes	0	0	0	0
Cotton	1,166	4,175	82.4	-3,022
Total	98,552	107,761	26,459	-50,400

Source: Monetary Policy Department, SBP