

6.1 Government of Pakistan Treasury Bills

(Million Rupees)

PERIOD	3 months Government of Pakistan Treasury Bills					6 months Government of Pakistan Treasury Bills		
	Discount		Discharged	Discount	Outstanding	Discount		Discharged
	Issue	Allowed		Paid		Issue	Allowed	
2003 Jun.	-	-	17,222.3	77.7	498.1	1,487.7	12.4	12,970.3
Dec.	-	-	5,183.2	16.8	10,365.2	297.6	2.4	24,976.9
2004 Jun.	-	-	20,926.6	73.4	30,356.2	-	-	297.6
Dec.	15,113.8	136.2	17,332.4	117.6	61,089.6	-	-	-
2005 Jun.	74,533.5	1,237.8	76,332.8	867.2	254,698.5	59,097.9	273.1	-
Dec.	2,734.1	50.9	8,280.6	154.4	14,615.3	1,728.9	71.1	59,097.9
2006 Jun.	1,800.8	34.2	12,109.3	225.7	2,095.3	623.8	26.2	1,728.9
Dec.	793.6	15.8	27,846.2	553.8	20,995.0	5,124.8	225.2	623.8
2007 Jun.	-	-	5,147.5	102.5	3,001.7	299.7	13.3	5,124.8
2006 Nov.	14,612.6	287.5	15,196.0	304.1	48,047.6	10,633.7	466.4	192.0
Dec.	793.6	15.8	27,846.2	553.8	20,995.0	5,124.8	225.2	623.8
2007 Jan.	7,402.8	147.2	5,588.9	111.2	22,808.9	5,795.3	254.7	6,559.5
Feb.	686.4	13.7	14,612.6	287.5	8,882.7	12,629.8	555.1	2,777.9
Mar.	5,353.0	106.6	5,009.8	99.6	9,225.9	4,288.2	188.7	9,555.7
Apr.	2,009.8	40.2	3,284.7	65.3	7,951.1	22,073.5	976.5	8,637.1
May.	991.9	19.8	793.7	15.8	8,149.2	166.4	7.4	10,633.7
Jun.	-	-	5,147.5	102.5	3,001.7	299.7	13.3	5,124.8
Jul.	1,960.8	39.2	2,009.8	40.2	2,952.7	670.3	29.8	5,795.3
Aug.	5,989.3	124.7	991.9	19.8	7,950.1	3,398.8	154.6	13,013.0
Sep.	-	-	1,960.8	39.2	5,989.3	28.0	1.3	3,905.0
Oct.	-	-	-	-	5,989.3	4,792.0	218.5	22,073.5
Nov.	114.0	2.4	5,989.3	124.7	114.0	4,905.3	223.7	166.4

Note : Six months Government of Pakistan Treasury Bills restarted w. e. f. June 1998 and 3 & 12 months Government of Pakistan Treasury Bills restarted w.e.f July 1998.

6.1 Government of Pakistan Treasury Bills

(Million Rupees)

PERIOD	6 months Government of Pakistan Treasury Bills		12 months Government of Pakistan Treasury Bills (Auctioned and Rollover)					Outstanding Balance
	Discount Paid	Outstanding Balance	Issue	Discount		Discount Paid		
				Allowed	Discharged			
2003	Jun.	279.7	148,617.6	25,403.2	596.8	1,682.6	117.4	253,908.5
	Dec.	223.1	78,346.6	392.3	7.7	18,829.1	820.9	297,695.1
2004	Jun.	2.4	78,909.1	-	-	25,403.2	596.8	236,420.9
	Dec.	-	118,457.3	-	-	196.1	3.9	91,601.7
2005	Jun.	-	132,708.3	48,360.1	1,229.2	-	-	65,798.8
	Dec.	2,335.8	59,159.9	82,036.8	7,174.7	-	-	329,870.2
2006	Jun.	71.1	7,934.1	28,686.2	2,513.8	48,360.1	4,039.9	422,647.0
	Dec.	26.2	43,288.7	47,687.7	4,282.3	82,150.5	7,184.7	344,177.0
2007	Jun.	225.2	45,252.8	49,979.6	4,550.4	28,686.2	2,513.8	607,844.1
2006	Nov.	8.0	38,787.7	80,318.0	7,205.0	59,676.1	5,218.9	378,639.8
	Dec.	26.2	43,288.7	47,687.7	4,282.3	82,150.5	7,184.7	344,177.0
2007	Jan.	277.5	42,524.4	57,285.5	5,144.2	39,647.9	3,468.4	361,814.6
	Feb.	122.1	52,376.3	10,640.5	9,554.9	13,561.8	1,188.3	454,658.0
	Mar.	420.0	47,108.8	98,597.3	8,857.6	53,022.2	4,646.4	500,233.1
	Apr.	379.6	60,545.1	75,813.9	6,856.1	13,929.3	1,220.7	562,117.7
	May	466.4	50,077.9	25,812.1	2,340.9	1,379.1	120.9	586,550.7
	Jun.	225.2	45,252.8	49,979.6	4,550.4	28,686.2	2,513.8	607,844.1
	Jul.	254.7	40,127.7	106,673.7	9,744.0	37,889.9	3,321.1	676,627.9
	Aug.	571.9	30,513.5	37,574.9	3,525.1	490.9	44.1	713,711.9
	Sep.	171.8	26,636.5	42,788.8	4,010.7	4,782.8	429.5	751,717.9
	Oct. Nov.	976.5 7.4	9,355.1 14,094.0	20,067.2 38,813.0	1,880.5 3,636.1	22,781.3 80,318.0	2,045.7 7,205.0	749,003.8 707,498.8

Source: Financial Markets Strategy & Conduct Department, SBP

6.2 Sale / Purchase of Treasury Bills under Open Market Operation by SBP with Banks

SALE

(Billion Rupees)

PERIOD	2003-04		2004-05		2005-06		2006-07		2007-08	
	Bid Amount		Bid Amount		Bid Amount		Bid Amount		Bid Amount	
	Offered	Accepted	Offered	Accepted	Offered	Accepted	Accepted	Accepted	Accepted	Accepted
July	72.1	41.5	74.3	71.5	56.5	46.8	159.3	133.5	191.8	141.8
August	19.5	8.0	66.9	57.9	86.0	65.2	131.9	105.7	272.9	228.3
September	101.8	76.0	13.2	4.0	83.9	69.7	107.0	87.0	81.1	71.3
October	29.9	13.0	61.8	52.6	14.0	9.0	92.9	81.3	-	-
November	-	-	59.9	42.4	32.0	26.5	71.5	61.9	163.8	124.7
December	32.5	29.5	103.2	95.2	159.2	95.9	124.7	117.2		
January	62.7	54.5	15.4	6.5	82.5	67.1	69.6	60.2		
February	26.6	22.0	60.8	56.6	80.5	64.7	23.9	11.7		
March	26.9	16.6	83.7	60.8	44.5	41.1	50.2	42.1		
April	27.3	24.0	90.9	49.6	-	-	119.0	88.8		
May	16.0	4.9	73.1	49.2	6.6	4.0	27.0	11.4		
June	145.2	120.9	95.5	64.9	235.4	153.8	161.8	135.3		
Average										
per month	46.7	34.2	66.5	50.9	73.4	53.6	94.9	78.0	141.9	113.2
per day	1.6	1.1	2.2	1.7	2.5	1.8	3.2	2.6	4.7	3.8

PURCHASE

PERIOD	Amount		Amount		Amount		Amount		Amount	
	Offered	Injected	Offered	Injected	Offered	Injected	Offered	Injected	Offered	Injected
July	-	-	-	-	-	-	-	-	-	-
August	-	-	-	-	11.2	8.3	27.2	21.2	-	-
September	-	-	-	-	-	-	-	-	-	-
October	7.8	3.5	16.1	14.0	66.9	38.5	-	-	40.9	40.9
November	85.9	56.7	-	-	123.6	74.1	-	-	-	-
December	29.3	16.5	-	-	-	-	31.3	25.8		
January	-	-	40.3	21.3	139.6	111.5	-	-		
February	-	-	-	-	60.6	42.8	-	-		
March	-	-	-	-	12.7	10.7	51.1	25.0		
April	-	-	-	-	210.5	96.9	-	-		
May	-	-	20.0	9.0	91.4	46.7	-	-		
June	-	-	-	-	-	-	-	-		
Average										
per month	10.2	6.4	6.4	3.7	59.7	35.8	9.1	6.0	8.2	8.2
per day	0.3	0.2	0.2	0.1	2.0	1.2	0.3	0.2	0.3	0.3

Source: Financial Markets Strategy & Conduct Department, SBP

6.3 SBP 3-Day Repo Facility MTBs / FIBs / PIBs (Outstanding)

Cash Accommodation

(Million Rupees)

PERIOD	2002-03	2003-04	2004-05	2005-06	2006-07	2007-08
July	94,168	-	700	23,861	38,883	111,817
August	9,490	-	10,600	48,241	19,032	68,490
September	87,535	-	84,760	45,245	66,715	121,825
October	214,984	10,440	63,324	116,512	27,670	575,455
November	103,241	400	14,098	91,780	77,702	126,045
December	29,775	-	-	4,520	35,573	
January	140,540	1,350	115,134	29,760	7,718	
February	2,500	8,340	-	12,032	34,435	
March	-	-	21,695	47,815	75,895	
April	6,625	24,745	800	243,238	51,327	
May	-	1,245	70,787	55,246	174,980	
June	-	-	139,550	44,019	76,830	
Average						
per month	57,405	3,877	43,454	63,522	57,230	200,726
per day	1,913	129	1,448	2,117	1,908	6,691

SBP 3-Day Repo Rates

(Percent per annum)

July	9.00	7.50	7.50	9.00	9.50	9.50
August	9.00	7.50	7.50	9.00	9.50	10.00
September	9.00	7.50	7.50	9.00	9.50	10.00
October	9.00	7.50	7.50	9.00	9.50	10.00
November	7.50	7.50	7.50	9.00	9.50	10.00
December	7.50	7.50	7.50	9.00	9.50	
January	7.50	7.50	7.50	9.00	9.50	
February	7.50	7.50	7.50	9.00	9.50	
March	7.50	7.50	7.50	9.00	9.50	
April	7.50	7.50	9.00	9.00	9.50	
May	7.50	7.50	9.00	9.00	9.50	
June	7.50	7.50	9.00	9.00	9.50	

Note: Rates applicable against T-bills & FIBs, PIBs

Source: Financial Markets Strategy & Conduct Department, SBP

6.4 Auction of Government of Pakistan Market Treasury Bills (Auction Wise)

(Million Rupees)

AUCTION SETTLEMENT DATE	3 Months Treasury Bills				6 Months Treasury Bills	
	Amount Offered	Amount Accepted	Cutt-off Yield (%)	Weighted Average (%)	Amount Offered	Amount Accepted
2006-07						
10-11-06	15,200	13,000	8.6544	8.6368	5,800	4,800
23-11-06	2,250	1,900	8.6417	8.6417	7,650	6,300
07-12-06	952	402	8.6417	8.6417	4,950	4,050
21-12-06	600	300	8.6417	8.6417	1,300	1,300
04-01-07	4,350	4,300	8.6417	8.6417	5,850	5,800
18-01-07	3,300	3,250	8.6417	8.6417	2,500	250
01-02-07	150	100	8.6417	8.6417	9,600	9,550
15-02-07	650	600	8.6417	8.6417	2,700	2,650
01-03-07	2,150	100	8.6417	8.6417	2,450	400
15-03-07	-	-	-	-	-	-
29-03-07	7,450	5,250	8.6869	8.6503	6,100	4,050
12-04-07	2,000	2,000	8.6869	8.6869	19,500	19,500
26-04-07	150	50	8.6869	8.6869	6,150	3,550
10-05-07	1,200	400	8.6869	8.6869	100	100
24-05-07	500	500	8.6869	8.6869	100	50
07-06-07	-	-	-	-	313	313
21-06-07	-	-	-	-	-	-
2007-08						
05-07-07	2,000	2,000	8.6869	8.6869	500	500
19-07-07	-	-	-	-	200	200
02-08-07	-	-	-	-	522	522
16-08-07	8,000	6,000	9.0942	9.0489	2,000	2,000
30-08-07	-	-	-	-	-	-
13-09-07	-	-	-	-	-	-
27-09-07	-	-	-	-	-	-
11-10-07	-	-	-	-	-	-
25-10-07	-	-	-	-	5,500	5,000
08-11-07	-	-	-	-	5,000	5,000
22-11-07	100	Rejected	Rejected	Rejected	100	100

6.4 Auction of Government of Pakistan Market Treasury Bills (Auction Wise)

(Million Rupees)

AUCTION SETTLEMENT DATE	6 Months Treasury Bills		12 Months Treasury Bills			
	Cutt-off Yield (%)	Weighted Average (%)	Amount Offered	Amount Accepted	Cutt-off Yield (%)	Weighted Average (%)
2006-07						
10-11-06	8.8190	8.8190	31,400	30,000	9.0055	9.0020
23-11-06	8.8142	8.8142	61,523	57,523	9.0046	9.0046
07-12-06	8.8142	8.8142	36,720	35,720	9.0046	9.0046
21-12-06	8.8142	8.8142	17,050	16,250	9.0046	9.0046
04-01-07	8.8142	8.8142	27,700	26,700	9.0046	9.0046
18-01-07	8.8142	8.8142	42,095	35,595	9.0046	9.0043
01-02-07	8.8142	8.8142	73,600	66,600	9.0046	9.0043
15-02-07	8.8142	8.8142	49,360	49,360	9.0046	9.0045
01-03-07	8.8142	8.8142	42,360	40,360	9.0046	9.0046
15-03-07	-	-	27,050	27,050	9.0165	9.0031
29-03-07	8.8579	8.8250	47,590	39,490	9.0523	9.0156
12-04-07	8.9017	8.8669	47,600	34,300	9.0761	9.0538
26-04-07	8.9017	8.9017	58,670	48,370	9.0880	9.0784
10-05-07	8.9017	8.9017	27,753	20,753	9.1000	9.0910
24-05-07	8.9017	8.9017	15,500	7,400	9.1119	9.1021
07-06-07	8.9017	8.9017	46,530	46,530	9.1597	9.1234
21-06-07	-	-	24,900	8,000	9.1597	9.1597
2007-08						
05-07-07	8.9017	8.9017	81,918	58,918	9.1597	9.1597
19-07-07	8.9017	8.9017	64,890	57,490	9.1597	9.1593
02-08-07	9.0987	9.0987	34,200	10,000	9.3990	9.3727
16-08-07	9.1426	9.1426	45,850	25,100	9.4092	9.3975
30-08-07	-	-	25,700	6,000	9.3990	9.3990
13-09-07	-	-	31,070	25,220	9.3990	9.3990
27-09-07	-	-	24,700	21,200	9.3990	9.3990
11-10-07	-	-	18,030	16,930	9.3990	9.3990
25-10-07	9.1426	9.1426	9,164	5,014	9.3990	9.3893
08-11-07	9.1426	9.1426	50,020	30,020	9.3990	9.3932
22-11-07	9.2084	9.2084	17,428	12,428	9.3990	9.3961

Source: Financial Markets Strategy & Conduct Department, SBP

6.5 Auction of Pakistan Investment Bonds (PIBs)

(Million Rupees)

AUCTION SETTLEMENT		Coupon Rate (%)	Amount Offered	Amount Accepted	Price		Weighted Average Yield Accepted (%)
DATE	Tenure				Accepted = Rs.100	Cut-off Yield Accepted (%)	
2007-08							
22-08-07	3-Years	9.10	2,973.00	1,273.00	98.50	9.6881	9.6725
	5-Years	9.30	6,302.50	4,652.50	97.71	9.8916	9.8571
	10-Years	9.60	10,610.00	4,260.00	95.39	10.3509	0.3371
	15-Years	10.00	936.00	536.00	93.00	11.1494	11.1080
	20-Years	10.50	3,000.00	1,800.00	91.87	11.4016	11.3730
	30-Years	11.00	4,800.00	4,000.00	94.35	11.6802	11.6146
10-10-07	3-Years	9.10	3,616.50	1,291.50	98.70	9.6211	9.6185
	5-Years	9.30	8,000.30	3,550.30	98.07	9.8024	9.7958
	10-Years	9.60	18,965.00	6,540.00	96.36	10.1897	10.1791
	15-Years	10.00	2,524.00	2,024.00	91.92	11.1494	11.1026
	20-Years	10.50	2,000.00	2,000.00	92.97	11.4103	11.3753
	30-Years	11.00	2,000.00	2,000.00	94.87	11.6142	11.5880
31-10-07	3-Years	9.10	2,487.00	1,887.00	98.65	9.6495	9.6344
	5-Years	9.30	3,250.00	1,650.00	98.01	9.8221	9.8140
	10-Years	9.60	11,765.00	7,465.00	96.19	10.2195	10.1961
	15-Years	10.00	6,327.50	3,007.90	91.88	11.1597	11.1428
	20-Years	10.50	550.00	500.00	92.97	11.4132	11.4057
	30-Years	11.00	1,000.00	1,000.00	94.87	11.6151	11.6132
30-11-07	3-Years	9.10	775.00	Rejected	-	-	-
	5-Years	9.30	1,315.00	Rejected	-	-	-
	10-Years	9.60	5,700.00	Rejected	-	-	-
	15-Years	10.00	1,280.00	Rejected	-	-	-
	20-Years	10.50	No Bid	No Bid	-	-	-
	30-Years	11.00	2,000.00	2,000.00	94.85	11.6198	11.6176

Source: Financial Markets Strategy & Conduct Department, SBP

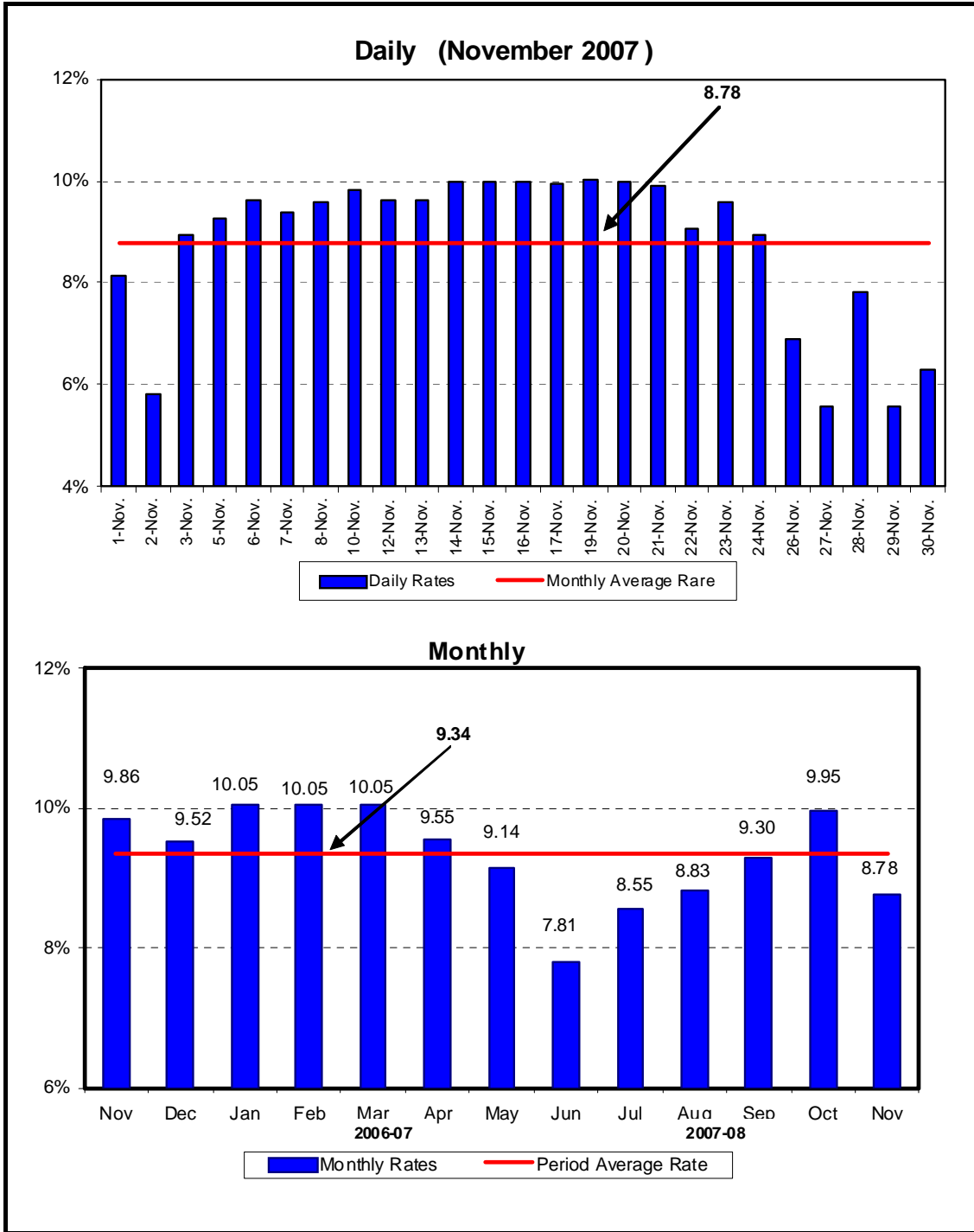
6.6 Monthly KIBOR

			(Percent per annum)													
Period	1 Week		2 Week		1Month		3 Month		6 Month		9 Month		12 Month			
	Bid	Offer	Bid	Offer	Bid	Offer	Bid	Offer	Bid	Offer	Bid	Offer	Bid	Offer		
2006	Nov.	Month Average	8.74	9.74	8.89	9.39	9.14	9.64	9.80	10.30	10.06	10.56	10.25	10.75	10.41	10.91
		End-Month	8.79	9.79	8.86	9.36	9.13	9.63	9.79	10.29	10.07	10.57	10.24	10.74	10.41	10.91
	Dec.	Month Average	8.55	9.55	8.91	9.41	9.28	9.77	9.83	10.33	10.11	10.61	10.27	10.77	10.45	10.95
		End-Month	9.15	10.15	9.25	9.75	9.48	9.98	9.92	10.42	10.15	10.65	10.32	10.82	10.50	11.00
2007	Jan	Month Average	8.71	9.71	9.04	9.54	9.37	9.87	9.83	10.33	10.05	10.55	10.27	10.77	10.45	10.95
		End-Month	8.43	9.43	8.75	9.25	9.17	9.67	9.76	10.26	10.03	10.53	10.26	10.76	10.44	10.94
	Feb.	Month Average	8.78	9.78	8.95	9.45	9.21	9.71	9.76	10.26	9.99	10.49	10.21	10.71	10.42	10.92
		End-Month	8.96	9.96	9.03	9.53	9.18	9.68	9.73	10.23	9.98	10.48	10.18	10.68	10.39	10.89
	Mar.	Month Average	8.84	9.84	8.97	9.47	9.18	9.68	9.68	10.17	9.93	10.43	10.16	10.66	10.35	10.85
		End-Month	8.54	9.54	8.81	9.31	9.06	9.56	9.63	10.03	9.89	10.39	10.10	10.60	10.29	10.79
	Apr.	Month Average	8.48	9.48	8.75	9.25	8.93	9.44	9.37	9.91	9.75	10.25	9.95	10.45	10.13	10.63
		End-Month	8.78	9.78	8.89	9.39	8.94	9.44	9.39	9.89	9.73	10.23	9.89	10.39	10.05	10.55
	May.	Month Average	8.82	9.82	8.90	9.40	8.95	9.45	9.32	9.82	9.67	10.17	9.87	10.37	10.00	10.50
		End-Month	8.32	9.32	8.54	9.04	8.77	9.27	9.24	9.74	9.60	10.10	9.84	10.34	9.97	10.47
	Jun.	Month Average	8.38	9.38	8.66	9.16	8.84	9.34	9.12	9.62	9.53	10.03	9.80	10.30	9.95	10.45
		End-Month	8.87	9.87	8.83	9.33	8.92	9.42	9.09	9.59	9.52	10.02	9.76	10.26	9.93	10.43
	Jul.	Month Average	8.45	9.45	8.66	9.16	8.79	9.29	9.03	9.53	9.47	9.97	9.70	10.20	9.86	10.36
		End-Month	8.53	9.53	8.69	9.19	8.81	9.31	9.06	9.56	9.46	9.96	9.68	10.18	9.83	10.33
	Aug.	Month Average	8.76	9.76	8.94	9.44	9.05	9.55	9.32	9.82	9.63	10.13	9.83	10.33	10.03	10.53
		End-Month	8.77	9.77	8.92	9.42	9.04	9.54	9.29	9.79	9.59	10.09	9.82	10.32	10.03	10.53
	Sep.	Month Average	8.84	9.84	8.99	9.49	9.05	9.55	9.23	9.73	9.51	10.01	9.77	10.27	9.99	10.49
		End-Month	8.88	9.88	9.02	9.52	9.08	9.58	9.21	9.71	9.47	9.97	9.73	10.23	9.97	10.47
	Oct.	Month Average	9.26	10.26	9.35	9.85	9.29	9.79	9.30	9.80	9.50	10.00	9.73	10.23	9.96	10.46
		End-Month	9.21	10.21	9.31	9.81	9.29	9.79	9.30	9.80	9.48	9.98	9.72	10.22	9.95	10.45
	Nov.	Month Average	8.84	9.84	9.05	9.55	9.14	9.64	9.27	9.77	9.47	9.97	9.70	10.20	9.91	10.41
		End-Month	8.38	9.38	8.80	9.30	9.02	9.52	9.23	9.73	9.45	9.95	9.69	10.19	9.90	10.40

KIBOR :Karachi Interbank Offered Rate

Source: Domestic Markets & Monetary Management Department, SBP

Call Money Rate



6.7 Call Money Rate

(Percent per annum)

MONTH	2002-03	2003-04	2004-05	2005-06	2006-07	2007-08
July	5.59	0.74	1.90	8.52	8.34	8.55
August	5.32	1.40	3.03	7.78	9.09	8.83
September	7.30	1.01	5.51	8.09	9.30	9.30
October	7.96	2.34	3.40	9.23	9.67	9.95
November	4.90	2.67	4.04	8.98	9.86	8.78
December	4.61	2.43	2.79	8.01	9.52	
January	4.12	1.72	6.53	8.38	10.05	
February	2.36	2.57	2.67	9.07	10.05	
March	1.14	0.99	5.02	8.38	10.05	
April	2.71	3.38	3.95	9.05	9.55	
May	3.83	1.65	6.37	8.62	9.14	
June	0.92	1.46	6.85	7.39	7.81	
Average of the period	4.23	1.86	4.34	8.46	9.37	

Source: Daily Business Recorder

6.8 SBP Rates for Market to Market (M 2 M) of Major Currencies

MONTH	US Dollar			Euro			Japanese Yen			Pound Sterling		
	Ready	1Week	1Month	Ready	1Week	1Month	Ready	1Week	1Month	Ready	1Week	1 Month
1-Nov-07	60.7375	60.7765	60.9180	87.5926	87.6607	87.8938	0.5249	0.5257	0.5283	126.1123	126.1629	126.3674
2-Nov-07	60.7870	60.8455	60.9598	88.0257	88.1210	88.3172	0.5294	0.5304	0.5328	126.7591	126.8548	127.0027
3-Nov-07	60.7850	60.8315	60.9615	88.2112	88.2891	88.5094	0.5290	0.5299	0.5324	126.9890	127.0590	127.2406
5-Nov-07	60.8960	60.9350	61.0620	88.1317	88.1981	88.4141	0.5322	0.5330	0.5355	126.7642	126.8182	126.9949
6-Nov-07	60.8430	60.8808	60.9850	88.3714	88.4367	88.6244	0.5306	0.5313	0.5338	126.9276	126.9800	127.1061
7-Nov-07	60.9160	60.9435	61.0525	89.5039	89.5540	89.7480	0.5369	0.5375	0.5400	128.0454	128.0755	128.2120
8-Nov-07	60.9360	60.9663	61.0700	89.3048	89.3589	89.5415	0.5392	0.5399	0.5422	128.0601	128.0975	128.2259
10-Nov-07	60.8980	60.9305	61.0310	89.3587	89.4157	89.5944	0.5499	0.5507	0.5530	127.2616	127.3001	127.4162
12-Nov-07	60.9380	60.9675	61.0700	88.9908	89.0436	89.2243	0.5503	0.5510	0.5533	126.7236	126.7560	126.8737
13-Nov-07	60.9970	61.0278	61.1315	89.0678	89.1243	89.3058	0.5544	0.5553	0.5576	126.0595	126.0904	126.2034
14-Nov-07	61.1900	61.2165	61.3170	89.7321	89.7834	89.9645	0.5498	0.5507	0.5529	127.1314	127.1595	127.2633
15-Nov-07	61.1870	61.2085	61.2920	89.6114	89.6564	89.8173	0.5524	0.5530	0.5553	125.3752	125.3936	125.4800
16-Nov-07	61.1395	61.1563	61.2265	89.3034	89.3396	89.4756	0.5550	0.5556	0.5577	124.7521	124.7599	124.8126
17-Nov-07	61.1300	61.1450	61.2285	89.6380	89.6720	89.8289	0.5510	0.5516	0.5538	125.5519	125.5551	125.6341
19-Nov-07	61.2160	61.2505	61.3355	89.6049	89.6675	89.8254	0.5543	0.5551	0.5574	125.3857	125.4285	125.5078
20-Nov-07	61.2520	61.2733	61.3835	90.5335	90.5771	90.7792	0.5555	0.5562	0.5586	126.3843	126.3995	126.5280
21-Nov-07	60.9100	60.9235	60.9990	90.1986	90.2305	90.3802	0.5609	0.5615	0.5638	125.3741	125.3743	125.4338
22-Nov-07	61.0060	61.0095	61.0715	90.4566	90.4731	90.5992	0.5613	0.5618	0.5638	125.8859	125.8665	125.8972
23-Nov-07	61.0860	61.1080	61.1665	90.3279	90.3724	90.4931	0.5658	0.5665	0.5686	125.6203	125.6392	125.6683
24-Nov-07	61.1400	61.1600	61.2215	90.7165	90.7590	90.8830	0.5639	0.5646	0.5667	126.0004	126.0152	126.0445
26-Nov-07	61.2110	61.2085	61.2510	90.9871	90.9965	91.0965	0.5643	0.5647	0.5666	126.7649	126.7339	126.7295
27-Nov-07	61.2820	61.2545	61.2670	90.9425	90.9165	90.9772	0.5666	0.5668	0.5683	126.7526	126.6709	126.5980
28-Nov-07	61.1000	61.0940	61.1170	90.1072	90.1152	90.1981	0.5610	0.5614	0.5630	125.9882	125.9524	125.9066
29-Nov-07	61.1250	61.1035	61.1295	90.1808	90.1633	90.2612	0.5551	0.5553	0.5574	126.0306	125.9622	125.9291
30-Nov-07	61.2380	61.1910	61.1930	90.5404	90.4859	90.5345	0.5528	0.5528	0.5545	126.7320	126.6091	126.5213

6.8 SBP Rates for Market to Market (M 2 M) of Major Currencies

MONTH	Swiss Frank			Australian Dollar			Saudi Arabian Riyal			Kuwaiti Dinnar		
	Ready	1Week	1 Month	Ready	1Week	1 Month	Ready	1Week	1 Month	Ready	1Week	1 Month
1-Nov-07	52.2316	52.2941	52.4947	56.3796	56.3915	56.4507	16.2348	16.2460	16.2895	219.2612	219.5350	220.3701
2-Nov-07	52.6865	52.7634	52.9466	55.9210	55.9553	55.9860	16.2467	16.2632	16.2988	219.6380	219.9829	220.6131
3-Nov-07	52.6984	52.7651	52.9639	56.1319	56.1553	56.2021	16.2462	16.2592	16.2988	219.5197	219.8222	220.5035
5-Nov-07	52.7466	52.8070	53.0024	56.0274	56.0437	56.0893	16.2780	16.2891	16.3278	220.0716	220.3475	221.0349
6-Nov-07	53.0292	53.0885	53.2731	56.2950	56.3093	56.3278	16.2638	16.2746	16.3072	219.8801	220.1292	220.7802
7-Nov-07	53.8103	53.8615	54.0481	57.2093	57.2144	57.2399	16.2833	16.2915	16.3255	220.1121	220.3069	220.9166
8-Nov-07	53.8375	53.8902	54.0682	56.4724	56.4798	56.5011	16.2822	16.2911	16.3252	220.5430	220.7564	221.3483
10-Nov-07	54.2352	54.2908	54.4681	55.5542	55.5622	55.5793	16.2848	16.2944	16.3294	220.5051	220.7267	221.3955
12-Nov-07	54.0974	54.1499	54.3281	54.5334	54.5385	54.5581	16.2979	16.3063	16.3407	220.7899	221.0008	221.5893
13-Nov-07	54.2075	54.2648	54.4470	54.3697	54.3736	54.3910	16.3253	16.3345	16.3729	220.7837	220.9911	221.6917
14-Nov-07	54.4734	54.5234	54.7029	55.3494	55.3528	55.3663	16.3566	16.3643	16.4015	221.4983	221.6985	222.4290
15-Nov-07	54.4732	54.5196	54.6825	54.7379	54.7366	54.7425	16.3838	16.3902	16.4225	221.4594	221.6539	222.2134
16-Nov-07	54.4503	54.4924	54.6451	54.3011	54.2969	54.2911	16.3913	16.3967	16.4256	221.3997	221.5567	221.9960
17-Nov-07	54.6682	54.7086	54.8738	54.5921	54.5856	54.5921	16.3888	16.3936	16.4262	221.2853	221.4356	221.9228
19-Nov-07	54.7109	54.7681	54.9345	54.5128	54.5240	54.5303	16.4692	16.4789	16.5125	221.5965	221.8096	222.3429
20-Nov-07	55.2243	55.2705	55.4618	54.4377	54.4361	54.4618	16.4338	16.4402	16.5040	222.0724	222.2382	222.9533
21-Nov-07	55.1222	55.1619	55.3223	53.5186	53.5108	53.5050	16.3298	16.3364	16.3767	221.9591	222.0487	222.5266
22-Nov-07	55.3619	55.3924	55.5430	53.3162	53.2991	53.2787	16.3991	16.4035	16.4403	222.3900	222.4919	222.9579
23-Nov-07	55.3616	55.4090	55.5521	53.1723	53.1712	53.1511	16.4431	16.4525	16.5043	222.8605	223.0219	223.3577
24-Nov-07	55.4608	55.5065	55.6531	53.6473	53.6453	53.6265	16.4614	16.4703	16.5234	223.0575	223.2512	223.7056
26-Nov-07	55.5933	55.6191	55.7491	54.2789	54.2569	54.2219	16.4856	16.4960	16.5191	223.3980	223.4784	223.7561
27-Nov-07	55.6881	55.6922	55.8056	53.7014	53.6610	53.5958	16.4959	16.4984	16.5318	223.6570	223.6464	223.8146
28-Nov-07	54.8056	54.8300	54.9497	53.4075	53.3882	53.3374	16.4248	16.4331	16.4629	222.7895	222.8569	223.0629
29-Nov-07	54.6833	54.6942	54.8278	54.0101	53.9771	53.9394	16.4758	16.4782	16.4892	222.8807	222.9274	223.3653
30-Nov-07	54.7281	54.7142	54.8214	54.3947	54.3437	54.2909	16.5062	16.5018	16.5382	223.0893	223.0419	223.4708

Source: Financial Markets Strategy & Conduct Department, SBP