

2.1 Pakistan Monetary Survey (Depository Corporation Survey)

(Million Rupees)

Description	2005		2006		2007			
	Jun.	Dec.	Jun.	Dec.	Feb.	Mar.	Apr.	May.
Net Foreign Assets	687,363	621,354	786,458	775,042	817,209	854,577	844,923	867,661
Claims on non-residents	947,484	877,489	1,039,013	1,029,203	1,073,720	1,109,769	1,097,82	1,120,45
<i>Less: Liabilities to non-residents</i>	260,121	256,135	252,555	254,161	256,511	255,192	252,898	252,793
Domestic Credit	2,517,385	2,887,52	3,010,923	3,300,164	3,308,184	3,376,047	3,445,82	3,518,56
Net claims on General government ¹	713,755	781,182	802,948	826,385	852,145	879,886	931,451	970,437
Net claims on Central government	808,055	882,427	918,571	961,155	1,028,253	1,091,189	1,113,50	1,135,46
Claims on Central Govt.	998,713	1,129,83	1,176,896	1,202,688	1,263,883	1,320,640	1,351,71	1,393,54
<i>Less: Liabilities to Central Govt.</i>	190,658	247,407	258,325	241,533	235,630	229,451	238,205	258,083
Net claims on Provincial governments ²	(94,300)	(101,245)	(115,623)	(134,770)	(176,108)	(211,303)	(182,058)	(165,024)
Claims on Provincial Govts.	44,556	49,486	69,790	41,880	30,053	21,009	21,661	49,418
<i>Less: Liabilities to Provincial Govts.</i>	138,856	150,731	185,413	176,650	206,161	232,312	203,719	214,442
Claims on Private sectors	1,600,931	1,861,89	1,957,418	2,198,651	2,194,627	2,217,475	2,226,06	2,241,88
Claims on NFPSEs	106,431	124,893	136,209	136,126	129,891	139,078	140,754	153,781
Claims on NBFIs Depository & Non Depository	96,268	119,546	114,348	139,002	131,521	139,608	147,554	152,466
Broad Money (M2)	2,965,174	3,201,67	3,407,794	3,665,543	3,679,121	3,775,390	3,804,55	3,880,93
Narrow Money (M1)	2,512,214	2,474,57	2,720,685	2,854,792	2,842,756	2,896,466	2,922,15	2,981,89
Currency outside Depository Corporations (Banks)	666,414	732,011	741,349	874,597	830,282	834,993	836,236	850,583
Transferable/Demand deposits	1,845,800	1,742,56	1,979,336	1,980,195	2,012,474	2,061,473	2,085,92	2,131,31
Time Deposit	452,960	727,102	687,109	810,751	836,365	878,924	882,393	899,034
Public sector funds/deposits (SBP)	23,714	23,028	23,225	23,419	23,446	23,446	23,446	23,453
Counterpart funds	539	525	546	512	514	509	511	511
Long –Term Foreign Liabilities	110	97	84	65	64	60	60	58
Other items (Net) ³	215,208	283,549	365,737	385,672	422,245	431,219	462,183	481,275
Other liabilities	684,454	778,772	887,273	1,020,479	1,062,845	1,068,511	1,112,89	1,160,47
<i>less: Other assets</i>	469,246	495,223	521,536	634,807	640,600	637,292	650,712	679,195
Memorandum items:								
Bank Clearings	1,416,613	1,656,86	1,854,688	1,888,611	1,699,689	1,906,608	1,786,23	1,964,16
Post Office Savings	50,661	39,257	61,418	52,977	57,636	61,127	61,586	66,880

Note: Pakistan Monetary Survey is the analytical accounts of State Bank of Pakistan and Scheduled banks based on monthly reporting closely in the line with MFSM. Data relates to last working day of the month.

2.1 Pakistan Monetary Survey (Depository Corporation Survey)

(Million Rupees)

Description	2007							2008
	Jun.	Jul.	Aug.	Sep.	Oct.	Nov.	Dec.	Jan.
Net Foreign Assets	1,063,417	1,049,940	1,032,27	1,056,074	1,060,874	983,638	951,836	921,569
Claims on non-residents	1,317,429	1,302,860	1,284,54	1,310,862	1,315,746	1,245,568	1,225,442	1,184,680
<i>Less: Liabilities to non-residents</i>	254,012	252,920	252,265	254,788	254,872	261,930	273,606	263,111
Domestic Credit	3,517,670	3,502,991	3,570,46	3,560,561	3,621,748	3,821,106	4,012,716	4,021,338
Net claims on General government ¹	898,319	935,608	995,225	960,474	960,130	1,050,574	1,100,352	1,110,957
Net claims on Central Govt.	1,062,740	1,112,998	1,175,21	1,150,410	1,137,354	1,228,232	1,256,864	1,315,863
Claims on Central Govt.	1,368,149	1,379,508	1,448,79	1,425,285	1,428,244	1,520,160	1,573,468	1,622,614
<i>Less: Liabilities to Central Govt.</i>	305,409	266,510	273,580	274,875	290,890	291,928	316,604	306,751
Net claims on Provincial governments ²	(164,421)	(177,390)	(179,99)	(189,936)	(177,224)	(177,658)	(156,512)	(204,906)
Claims on Provincial Govts.	51,711	51,175	49,085	48,820	43,701	41,596	39,690	31,764
<i>Less: Liabilities to Provincial Govts.</i>	216,132	228,565	229,079	238,756	220,925	219,254	196,202	236,670
Claims on Private sectors	2,294,800	2,254,310	2,272,80	2,292,848	2,336,761	2,425,920	2,562,819	2,582,993
Claims on NFPSEs	164,140	156,659	154,904	163,092	159,620	170,432	176,606	171,470
Claims on NBFIs Depository & Non Depository	160,411	156,414	147,531	144,147	165,237	174,180	172,939	155,918
Broad Money (M2)	4,052,986	3,990,529	4,061,98	4,115,021	4,127,079	4,220,242	4,387,940	4,304,169
Narrow Money (M1)	3,155,635	3,098,523	3,141,40	3,169,022	3,194,759	3,275,890	3,403,647	3,326,310
Currency outside Depository Corporations (Banks)	840,418	836,830	839,877	875,348	908,288	939,300	1,008,186	979,019
Transferable/Demand deposits	2,315,217	2,261,693	2,301,52	2,293,674	2,286,471	2,336,590	2,395,461	2,347,291
Time Deposit	897,351	892,006	920,578	945,999	932,320	944,352	984,293	977,859
Public sector funds/deposits (SBP)	23,478	23,478	23,478	23,478	23,478	23,486	23,504	23,504
Counterpart funds	519	519	521	521	521	523	531	531
Long –Term Foreign Liabilities	56	50	50	50	49	48	39	39
Other items (Net) ³	504,049	538,353	516,710	477,566	531,499	560,446	552,533	614,664
Other liabilities	1,219,889	1,194,910	1,104,92	1,095,736	1,141,689	1,163,549	1,226,455	1,217,264
<i>less: Other assets</i>	715,840	656,557	588,212	618,170	610,190	603,103	673,922	602,600
Memorandum items:								
Bank Clearings	2,286,183	2,026,532	1,729,73	1,581,359	1,503,547	1,622,994	1,598,221	1,659,650
Post Office Savings	67,054	64,711	64,712	64,816	64,320	61,605	61,518	63,002

1. General Government includes Central Government and Provincial Governments

2. Provincial Governments include Provincial Governments and Local /city Governments

3. *Other Liabilities* include Liabilities to scheduled banks, paid up capital and reserve accounts, Other liabilities from SBP and liabilities to SBP from scheduled banks. *Other assets* include claims on banks, other assets from SBP and claims on SBP from scheduled banks.

2.2 Analytical Accounts of State Bank of Pakistan (Central Bank Survey)

(Million Rupees)

Description	2005		2006		2007			
	Jun.	Dec.	Jun.	Dec.	Feb.	Mar.	Apr.	May.
Net Foreign Assets	555,306	523,044	639,843	642,680	666,699	682,889	697,248	715,989
Claims on non-residents (Foreign Assets)	784,327	747,854	864,062	865,562	888,692	905,128	919,115	940,407
a) Monetary Gold Coin and Bullion	54,746	54,746	77,558	77,558	77,558	77,558	77,558	77,558
b) Holding of SDRs	13,569	12,915	13,124	13,122	13,013	13,069	13,230	13,033
c) Foreign Currency	767	3,176	3,126	2,792	4,244	3,203	2,829	2,275
d) Securities other than shares (Foreign)	472,514	414,829	555,312	549,365	559,037	581,790	600,770	611,647
e) Deposits	139,513	167,965	121,824	128,434	140,510	137,224	130,207	124,493
f) Loans	-	-	-	-	-	-	-	-
g) Financial Derivatives	-	-	-	-	-	-	-	-
h) Others	103,218	94,223	93,118	94,291	94,330	92,284	94,521	111,401
<i>Of which Quota - IMF</i>	90,312	93,254	92,156	91,315	91,315	91,315	91,315	95,586
Less: Liabilities to non-residents (Foreign Liabilities)	229,021	224,810	224,219	222,882	221,993	222,239	221,867	224,418
a) Deposits	42,066	42,036	42,207	42,671	42,542	42,564	42,508	42,553
b) Securities other than (N.N.N.I.B Securities)	90,301	85,268	85,259	83,581	83,442	83,302	83,009	83,023
c) Financial Derivatives	-	-	-	-	-	-	-	-
d) Loans (IMF Loan 1 & PRGF and SFD)	96,654	97,506	96,753	96,630	96,009	96,373	96,350	98,842
e) Other (IMF Administration Charges)	..	-	-	-	-	-	-	-
Claims on other Depository Corporations (Banks)	210,377	214,573	218,359	275,936	273,114	276,581	278,825	278,614
a) Loans and Advances	181,987	186,183	193,579	250,716	247,894	251,801	254,045	253,834
b) Internal Bills Purchased and Discounted	116	116	116	116	116	116	116	116
c) Investment in Share Capital	28,274	28,274	24,664	25,104	25,104	24,664	24,664	24,664
Net claims on General government ¹	248,818	390,412	383,912	461,811	418,285	416,822	396,670	400,373
Net claims on Central Govt.	283,636	434,036	434,153	505,632	483,394	499,771	452,205	457,882
Claims on Central Govt.	347,862	542,609	525,082	575,706	541,357	555,160	509,072	522,680
a) Securities	332,129	535,481	517,625	568,249	533,531	547,334	501,246	514,855
b) Other Claims	15,733	7,128	7,457	7,457	7,826	7,826	7,826	7,825
Less: Liabilities to Central Government	64,226	108,573	90,929	70,074	57,963	55,389	56,867	64,798
a) Deposits	64,226	108,573	90,929	70,074	57,963	55,389	56,867	64,798
b) Other Liabilities	-	-	-	-	-	-	-	-

Note: Analytical accounts are the statistical presentation of monetary statistics of State Bank of Pakistan based on monthly reporting closely in the line with MFSM.

2.2 Analytical Accounts of State Bank of Pakistan

(Central Bank Survey)

(Million Rupees)

Description	2005		2006		2007			
	Jun.	Dec.	Jun.	Dec.	Feb.	Mar.	Apr.	May.
Net claims on Provincial governments ²	(34,818)	(43,624)	(50,241)	(43,821)	(65,109)	(82,949)	(55,535)	(57,509)
Claims on Provincial governments	10,814	14,503	16,404	6,560	10,990	9,534	10,713	9,344
a) Securities	-	-	-	-	-	-	-	-
b) Other Claims	10,814	14,503	16,404	6,560	10,990	9,534	10,713	9,344
Less: Liabilities to Provincial Govts.	45,632	58,127	66,645	50,381	76,099	92,483	66,248	66,853
a) Deposits	45,632	58,127	66,645	50,381	76,099	92,483	66,248	66,853
b) Other Liabilities	-	-	-	-	-	-	-	-
Claims on other sectors	16,927	15,415	15,889	17,819	16,162	16,143	16,268	16,248
a) Other financial corporations	16,927	15,415	15,889	17,819	16,162	16,143	16,268	16,248
1) Loans and advances to NBFIs	15,254	13,742	14,216	16,146	14,489	14,030	14,155	14,135
2) Investment in NBFIs shares	1,673	1,673	1,673	1,673	1,673	2,113	2,113	2,113
b) Other resident sectors	-	-	-	-	-	-	-	-
Monetary Base (Reserve Money)	909,013	985,352	1,001,333	1,191,781	1,156,641	1,151,961	1,162,449	1,183,857
a) Currency in circulation (Currency outside Banks)	666,414	732,011	741,349	874,597	830,282	834,993	836,236	850,583
b) Liabilities to other Depository Corps.	239,264	250,014	255,054	312,385	321,468	311,373	320,114	327,126
1) Reserve deposits (Banker's deposits)	196,302	207,750	207,574	264,356	269,546	262,228	267,457	273,825
2) Other liabilities (Currency in scheduled banks)	42,962	42,264	47,480	48,029	51,922	49,145	52,657	53,301
c) Deposits included in broad money (Private sector deposits)	3,335	3,327	4,931	4,798	4,892	5,595	6,099	6,148
Public sector funds/deposits	23,714	23,028	23,225	23,419	23,446	23,446	23,446	23,453
Counterpart funds	539	525	546	512	514	509	511	511
Paid up Capital and Reserve	5,515	15,514	15,514	34,656	34,656	34,656	34,656	34,656
Other items (Net)	92,644	119,024	217,385	147,881	159,002	181,864	167,949	168,747
Other Liabilities	120,364	152,376	270,905	200,070	213,093	238,836	223,509	247,438
Less: Other Assets	27,720	33,352	53,520	52,189	54,091	56,972	55,560	78,691
Plus: Consolidation adjustments	-	-	-	-	-	-	-	-

2.2 Analytical Accounts of State Bank of Pakistan (Central Bank Survey)

(Million Rupees)

Description	2007							2008
	Jun.	Jul.	Aug.	Sep.	Oct.	Nov.	Dec.	Jan.
Net Foreign Assets	867,581	861,596	864,727	878,471	905,864	849,499	830,367	804,737
Claims on non-residents (Foreign Assets)	1,089,835	1,084,787	1,088,496	1,105,845	1,132,630	1,079,089	1,057,987	1,034,138
a) Monetary Gold Coin and Bullion	82,598	84,433	85,737	94,754	100,791	100,736	108,087	121,613
b) Holding of SDRs	12,802	12,904	12,891	13,126	13,237	13,458	13,149	13,258
c) Foreign Currency	3,510	3,441	3,964	3,018	4,053	1,723	3,563	3,232
d) Securities other than shares (Foreign)	685,469	648,610	698,437	690,290	748,550	714,683	681,894	658,248
e) Deposits	152,719	187,611	172,472	183,924	147,938	146,773	148,784	136,793
f) Loans	-	-	-	-	-	-	-	-
g) Financial Derivatives	-	-	-	-	-	-	-	-
h) Others	152,737	147,788	114,995	120,733	118,061	101,716	102,510	100,994
<i>Of which Quota - IMF</i>	94,817	95,607	95,607	97,690	98,706	100,633	99,892	99,892
Less: Liabilities to non-residents (Foreign Liab)	222,254	223,191	223,769	227,374	226,766	229,590	227,620	229,401
a) Deposits	42,384	42,349	42,602	42,562	42,554	43,055	43,269	43,891
b) Securities other than shares (N.N.N.I.B)	81,962	82,585	82,585	84,402	82,991	83,433	81,233	82,551
c) Financial Derivatives	-	-	-	-	-	-	-	-
d) Loans (IMF Loan 1 & PRGF and SDF)	97,908	98,257	98,582	100,410	101,221	103,102	103,118	102,959
e) Other (IMF Administration Charges)	-	-	-	-	-	-	-	-
Claims on other Depository Corporations	271,594	268,089	206,256	229,848	229,093	229,186	219,646	218,154
a) Loans and Advances	253,419	250,505	188,672	212,664	211,909	212,701	203,461	201,969
b) Internal Bills Purchased and Discounted	116	116	116	116	116	116	116	116
c) Investment in Share Capital	18,059	17,468	17,468	17,068	17,068	16,369	16,069	16,069
Net Claims on General government ¹	325,360	320,650	364,575	311,389	336,405	480,294	524,970	624,614
Net claims on Central government	377,106	377,887	427,363	373,875	383,846	526,890	553,985	683,986
Claims on Central government	469,696	424,037	472,503	423,569	428,620	560,462	608,439	729,066
a) Securities	461,725	416,066	464,532	415,598	420,649	552,491	600,468	721,095
b) Other Claims	7,971	7,971	7,971	7,971	7,971	7,971	7,971	7,971
Less: Liabilities to Central government	92,590	46,150	45,140	49,694	44,774	33,572	54,454	45,080
a) Deposits	92,590	46,150	45,140	49,694	44,774	33,572	54,454	45,080
b) Other Liabilities	-	-	-	-	-	-	-	-

Revaluation Procedure:

- Gold is revalued on month end basis from June 07 before that it was revalued at the end of financial year (June end) on the basis of closing London Market Rate.
- SDR holdings (with IMF and SBP) are revalued on month end basis from June 07 before that it was revalued on weekly basis.
- IMF related balances, IMF Account No.1, IMF Account No. 2, IMF securities account and IMF quota account, are revalued at the close of IMF financial year i.e. 30th April and also 30th June of SBP.
- Liabilities balances such as PRGF loan account & IMF (SDF) loan account are revalued on month end basis.

2.2 Analytical Accounts of State Bank of Pakistan (Central Bank Survey)

Description	(Million Rupees)							
	2007							2008
	Jun.	Jul.	Aug.	Sep.	Oct.	Nov.	Dec.	Jan.
Net claims on Provincial governments ²	(51,746)	(57,237)	(62,788)	(62,486)	(47,441)	(46,596)	(29,015)	(59,372)
Claims on Provincial governments	10,820	10,893	8,827	11,533	11,144	12,751	14,753	14,802
a) Securities	-	-	-	-	-	-	-	-
b) Other Claims	10,820	10,893	8,827	11,533	11,144	12,751	14,753	14,802
Less: Liabilities to Provincial Govts.	62,566	68,130	71,615	74,019	58,585	59,347	43,768	74,174
a) Deposits	62,566	68,130	71,615	74,019	58,585	59,347	43,768	74,174
b) Other Liabilities	-	-	-	-	-	-	-	-
Claims on other sectors	16,187	16,167	16,048	16,376	16,347	16,488	17,280	17,289
a) Other financial corporations	16,187	16,167	16,048	16,376	16,347	16,488	17,280	17,289
1) Loans and advances to NBFIs	14,074	14,054	13,935	13,862	13,834	13,975	13,967	13,976
2) Investment in NBFIs shares	2,113	2,113	2,113	2,514	2,513	2,513	3,313	3,313
b) Other resident sectors	-	-	-	-	-	-	-	-
Monetary Base (Reserve Money)	1,210,429	1,184,706	1,165,801	1,213,586	1,247,933	1,271,759	1,367,907	1,314,202
a) Currency in circulation	840,418	836,830	839,877	875,348	908,288	939,300	1,008,186	979,019
b) Liabilities to other Depository Corps.	363,003	341,647	321,902	332,750	334,554	327,365	354,575	330,181
1) Reserve deposits (Banker's deposits)	305,169	280,179	267,305	275,006	272,134	271,457	286,560	269,463
2) Other liabilities (Currency in scheduled banks)	57,834	61,468	54,597	57,744	62,420	55,908	68,015	60,718
c) Deposits included in broad money (Private sector deposits)	7,008	6,229	4,022	5,488	5,091	5,094	5,146	5,002
Public sector funds/deposits	23,478	23,478	23,478	23,478	23,478	23,486	23,504	23,504
Counterpart funds	519	519	521	521	521	523	531	531
Paid up Capital and Reserve	55,939	55,939	55,939	55,939	65,079	65,079	65,079	65,079
Other items (Net)	190,356	201,858	205,864	142,559	150,698	214,619	135,240	261,476
Other Liabilities	269,387	245,313	263,242	194,421	202,869	269,169	243,826	315,952
Less: Other Assets	79,031	43,455	57,378	51,862	52,171	54,550	108,586	54,476
Plus: Consolidation adjustments	-	-	-	-	-	-	-	-

1. General Government includes Central Government and Provincial Governments

2. Provincial Governments includes Provincial Governments and Local / city Governments

2.3 Analytical Accounts of Scheduled Banks (Other Depository Corporations Survey)

(Million Rupees)

Description	2005		2006		2007			
	Jun.	Dec.	Jun.	Dec.	Feb.	Mar.	Apr.	May.
Net Foreign Assets	132,057	98,310	146,615	132,362	150,510	171,688	147,675	151,672
Claims on non-residents (Foreign Assets)	163,157	129,635	174,951	163,641	185,028	204,641	178,706	180,047
a) Foreign currency	6,806	7,350	6,415	9,546	9,292	9,212	8,960	7,964
b) Deposits	88,742	56,170	92,240	79,418	103,320	121,205	94,338	94,985
c) Securities other than shares ¹	67,609	66,115	76,296	74,677	72,416	74,224	75,408	77,098
d) Loans	-	-	-	-	-	-	-	-
e) Financial derivatives	-	-	-	-	-	-	-	-
f) Other	-	-	-	-	-	-	-	-
Less: Liabilities to non-residents (Foreign Liab)	31,100	31,325	28,336	31,279	34,518	32,953	31,031	28,375
a) Deposits	24,777	27,366	23,910	26,283	26,808	27,061	25,159	24,712
b) Securities other than shares	-	-	-	-	-	-	-	-
c) Financial derivatives	-	-	-	-	-	-	-	-
d) Loans	6,323	3,959	4,426	4,996	7,710	5,892	5,872	3,663
e) Other	-	-	-	-	-	-	-	-
Claims on central bank	231,150	247,298	249,658	306,682	313,395	303,740	316,327	321,980
a) Currency	42,962	42,265	47,480	48,029	51,921	49,145	52,657	53,301
b) Reserve deposits	188,188	205,033	202,178	258,653	261,474	254,595	263,670	268,679
c) Other Claims	-	-	-	-	-	-	-	-
Net claims on General Government ²	464,937	390,770	419,036	364,574	433,860	463,064	534,781	570,064
Net claims on Central Govt.	524,419	448,391	484,418	455,523	544,859	591,418	661,304	677,579
Claims on Central Govt.	650,851	587,225	651,814	626,982	722,526	765,480	842,642	870,864
a) Securities	600,743	551,012	597,924	568,506	666,371	713,029	793,891	811,013
b) Other claims	50,108	36,213	53,890	58,476	56,155	52,451	48,751	59,851
Less: Liabilities to Central Govt.	126,432	138,834	167,396	171,459	177,667	174,062	181,338	193,285
a) Deposits	126,432	138,834	167,396	171,459	177,667	174,062	181,338	193,285
b) Other Liabilities	-	-	-	-	-	-	-	-
Net claims on provincial governments ³	(59,482)	(57,621)	(65,382)	(90,949)	(110,999)	(128,354)	(126,523)	(107,515)
Claims on provincial governments	33,742	34,983	53,386	35,320	19,063	11,475	10,948	40,074
a) Securities	80	79	76	75	75	75	75	75
b) Other claims	33,662	34,904	53,310	35,245	18,988	11,400	10,873	39,999
Less: Liabilities to prov. governments	93,224	92,604	118,768	126,269	130,062	139,829	137,471	147,589
a) Deposits	93,224	92,604	118,768	126,269	130,062	139,829	137,471	147,589
b) Other liabilities	-	-	-	-	-	-	-	-

Note: Analytical accounts are the statistical presentation of monetary statistics of Scheduled Banks based on monthly reporting closely in the line with MFSM.

2.3 Analytical Accounts of Scheduled Banks (Other Depository Corporations Survey)

(Million Rupees)

Description	2005		2006		2007			
	Jun.	Dec.	Jun.	Dec.	Feb.	Mar.	Apr.	May.
Claims on other sectors	1,786,703	2,090,923	2,192,086	2,455,960	2,439,877	2,480,018	2,498,106	2,531,884
a) Other financial corporations	79,341	104,131	98,459	121,183	115,359	123,465	131,286	136,218
b) Public non financial corporations	106,431	124,893	136,209	136,126	129,891	139,078	140,754	153,781
c) Other non financial corporations	646,467	753,767	798,577	906,975	913,581	917,320	921,836	925,502
d) Other resident sectors	954,464	1,108,132	1,158,841	1,291,676	1,281,046	1,300,155	1,304,230	1,316,383
Liabilities to Central Bank	189,678	192,709	202,157	255,829	252,830	258,082	260,586	260,530
Deposits included in broad money	2,295,425	2,466,337	2,661,514	2,786,148	2,843,947	2,934,802	2,962,215	3,024,202
Transferable deposits (Demand deposits)	1,842,465	1,739,235	1,974,405	1,975,397	2,007,582	2,055,878	2,079,822	2,125,168
a) Other financial corporations	16,276	31,460	31,267	30,561	36,468	42,392	46,771	48,199
b) Public non financial corporations	124,015	122,578	124,708	83,627	109,754	111,116	118,797	116,437
c) Other non financial corporations	593,068	563,885	593,012	623,956	616,631	640,945	651,120	662,839
d) Other resident sectors	1,109,106	1,021,312	1,225,418	1,237,253	1,244,729	1,261,425	1,263,134	1,297,693
Time deposits	452,960	727,102	687,109	810,751	836,365	878,924	882,393	899,034
a) Other financial corporations	7,617	13,913	18,842	28,927	25,565	32,954	27,837	28,124
b) Public non financial corporations	93,133	148,919	131,483	131,955	142,064	139,664	141,100	150,103
c) Other non financial corporations	109,393	150,033	171,011	203,150	233,847	246,559	243,245	250,603
d) Other resident sectors	242,817	414,237	365,773	446,719	434,889	459,747	470,211	470,204
Deposits Excluded from broad money	29,906	49,022	54,626	64,030	53,685	52,669	46,318	42,896
Loans	24,878	47,878	165,957	159,980	164,293	129,982	153,646	133,279
<i>Of which: Other financial corporations</i>	672	1,540	1,448	5,203	1,997	2,119	2,892	2,373
Financial Derivatives	-	-	-	-	-	-	-	-
Central Govt. Lending Fund	9,314	9,314	9,314	9,314	9,354	9,314	9,314	9,314
Long -Term Foreign Liabilities	110	97	84	65	64	60	60	58
Shares and Other equity	201,521	225,803	246,334	317,141	342,404	379,236	400,590	404,515
a) Funds contributed by owners	98,086	106,250	121,198	165,858	134,676	180,299	188,548	192,485
b) Retained earnings	4,655	11,896	29,798	26,120	57,027	41,620	42,676	44,249
c) General & Special Reserves	85,548	88,150	95,997	109,051	131,501	138,714	146,909	143,053
d) Valuation adjustment	13,232	19,507	(659)	16,112	19,200	18,603	22,457	24,728
Other items (net)	(135,985)	(163,858)	(332,587)	(332,926)	(328,938)	(345,636)	(335,838)	(299,194)
Other liabilities	762,030	835,862	790,449	903,638	655,920	670,708	709,933	748,731
<i>Less: Other Assets</i>	898,015	999,720	1,123,036	1,236,564	984,858	1,016,344	1,045,771	1,047,925
<i>Plus Consolidation adjustment</i>	-	-	-	-	-	-	-	-

2.3 Analytical Accounts of Scheduled Banks (Other Depository Corporations Survey)

(Million Rupees)

Description	2007							2008
	Jun.	Jul.	Aug.	Sep.	Oct.	Nov.	Dec.	Jan.
Net Foreign Assets	195,836	188,344	167,552	177,603	155,010	134,139	121,469	116,832
Claims on non-residents (Foreign Assets)	227,594	218,073	196,048	205,017	183,116	166,479	167,455	150,542
a) Foreign currency	7,352	7,651	8,895	8,972	10,329	10,267	13,046	11,835
b) Deposits	143,921	133,641	111,509	120,001	97,500	83,514	81,219	68,017
c) Securities other than shares ¹	76,321	76,781	75,644	76,044	75,287	72,698	73,190	70,690
d) Loans	-	-	-	-	-	-	-	-
e) Financial derivatives	-	-	-	-	-	-	-	-
f) Other	-	-	-	-	-	-	-	-
Less: Liabilities to non-residents	31,758	29,729	28,496	27,414	28,106	32,340	45,986	33,710
a) Deposits	24,644	24,166	22,433	22,091	22,439	22,157	22,510	22,374
b) Securities other than shares	-	-	-	-	-	-	-	-
c) Financial derivatives	-	-	-	-	-	-	-	-
d) Loans	7,114	5,563	6,063	5,323	5,667	10,183	23,476	11,336
e) Other	-	-	-	-	-	-	-	-
Claims on central bank	365,216	345,014	324,579	336,461	328,927	319,367	345,691	329,971
a) Currency	57,834	61,468	54,597	57,744	62,420	55,908	68,015	60,718
b) Reserve deposits	307,382	283,546	269,982	278,717	266,507	263,459	277,676	269,253
c) Other Claims	-	-	-	-	-	-	-	-
Net claims on General government ²	572,959	614,958	630,650	649,085	623,725	570,280	575,382	486,343
Net claims on Central government	685,634	735,111	747,856	776,535	753,508	701,342	702,879	631,877
Claims on Central government	898,453	955,471	976,296	1,001,711	999,624	959,698	965,029	893,548
a) Securities	838,985	897,111	917,189	941,968	941,781	905,994	912,188	830,477
b) Other claims	59,468	58,360	59,107	59,748	57,843	53,704	52,841	63,071
Less: Liabilities to Central government	212,819	220,360	228,440	225,181	246,116	258,356	262,150	261,671
a) Deposits ³	212,819	220,360	228,440	225,181	246,116	258,356	262,150	261,671
b) Other Liabilities	-	-	-	-	-	-	-	-
Net Claims on Provincial governments ⁴	(112,675)	(120,153)	(117,206)	(127,45)	(129,78)	(131,062)	(127,49)	(145,53)
Claims on Provincial governments	40,891	40,282	40,258	37,287	32,557	28,845	24,937	16,962
a) Securities	75	75	75	75	75	79	75	161
b) Other claims	40,816	40,207	40,183	37,212	32,482	28,766	24,862	16,801
Less: Liabilities to Prov. governments	153,566	160,435	157,464	164,737	162,340	159,907	152,434	162,496
a) Deposits	153,566	160,435	157,464	164,737	162,340	159,907	152,434	162,496
b) Other liabilities	-	-	-	-	-	-	-	-

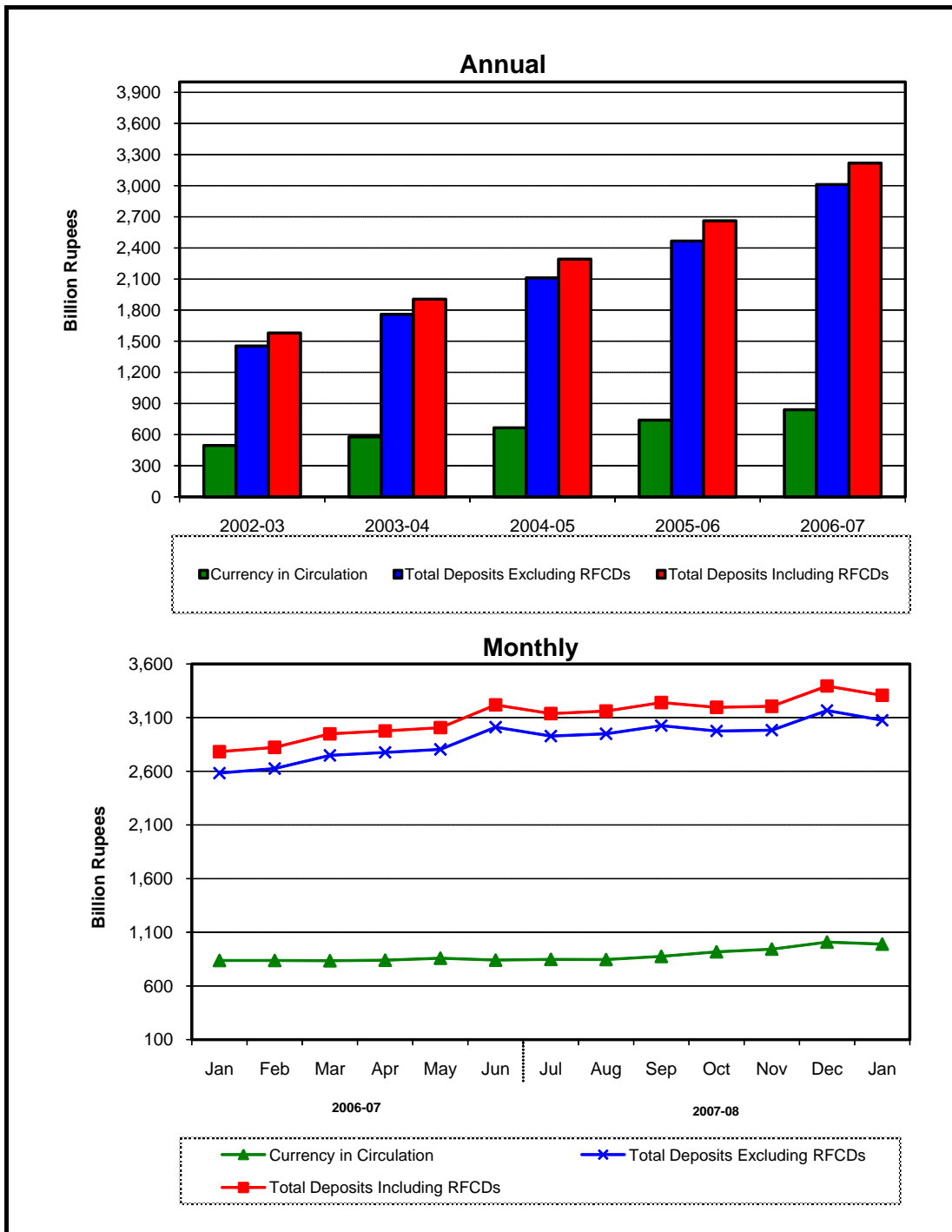
2.3 Analytical Accounts of Scheduled Banks (Other Depository Corporations Survey)

(Million Rupees)

Description	2007							2008
	Jun.	Jul.	Aug.	Sep.	Oct.	Nov.	Dec.	Jan.
Claims on other sectors	2,603,164	2,551,216	2,559,188	2,583,711	2,645,271	2,754,044	2,895,084	2,893,092
a) Other financial corporations	144,224	140,247	131,483	127,771	148,890	157,692	155,659	138,629
b) Public non financial corporations	164,140	156,659	154,904	163,092	159,620	170,432	176,606	171,470
c) Other non financial corporations	926,057	917,795	923,709	655,696	988,360	1,039,289	1,010,516	1,026,746
d) Other resident sectors	1,368,743	1,336,515	1,349,092	1,637,152	1,348,401	1,386,631	1,552,303	1,556,247
Liabilities to Central Bank	269,415	257,378	197,757	219,184	218,384	220,049	241,778	219,712
Deposits included in broad money	3,205,560	3,147,470	3,218,083	3,234,185	3,213,700	3,275,848	3,374,608	3,320,148
Transferable deposits (Demand deposits)	2,308,209	2,255,464	2,297,505	2,288,186	2,281,380	2,331,496	2,390,315	2,342,289
a) Other financial corporations	62,008	56,270	51,026	52,318	45,852	55,559	48,230	51,246
b) Public non financial corporations	126,860	122,902	163,283	156,498	147,323	172,827	158,409	157,413
c) Other non financial corporations	727,738	684,295	683,354	275,795	656,878	671,391	684,755	660,537
d) Other resident sectors	1,391,603	1,391,997	1,399,842	1,803,575	1,431,327	1,431,719	1,498,921	1,473,093
Time deposits	897,351	892,006	920,578	945,999	932,320	944,352	984,293	977,859
a) Other financial corporations	29,838	32,529	37,730	38,379	34,752	38,015	57,949	50,930
b) Public non financial corporations	145,570	133,755	137,346	134,990	121,042	133,685	140,995	145,902
c) Other non financial corporations	248,101	253,930	264,058	265,044	267,343	239,881	239,116	244,533
d) Other resident sectors	473,842	471,792	481,444	507,586	509,183	532,771	546,233	536,494
Deposits Excluded from broad money	58,236	43,898	39,582	40,102	43,356	47,191	54,754	47,781
Loans	214,667	166,026	168,384	165,513	186,013	191,182	203,901	183,240
<i>Of which: other financial corporations</i>	3,136	5,570	3,817	6,629	10,797	10,329	7,231	4,261
Financial Derivatives	-	-	-	-	-	-	-	-
Central Govt. Lending Fund	9,762	9,427	9,426	9,422	9,422	9,414	9,414	9,413
Long -Term Foreign Liabilities	56	50	50	50	49	48	39	39
Shares and Other equity	420,191	415,532	411,545	398,631	403,175	405,644	452,789	470,500
a) Funds contributed by owners	206,118	207,797	209,265	223,089	224,974	228,300	237,896	247,994
b) Retained earnings	44,263	40,121	39,157	37,358	37,887	33,809	56,407	65,998
c) General & Special Reserves	143,720	144,095	145,303	117,621	117,230	119,108	137,655	138,132
d) Valuation adjustment	26,090	23,519	17,820	20,563	23,084	24,427	20,831	18,376
Other items (net)	(440,710)	(340,249)	(362,854)	(320,225)	(321,162)	(371,544)	(399,660)	(424,593)
Other liabilities	854,313	884,548	938,202	1,037,132	1,116,675	1,156,827	989,943	749,884
<i>Less: Other Assets</i>	1,295,023	1,224,797	1,301,056	1,357,357	1,437,837	1,528,371	1,389,603	1,174,477
<i>Plus Consolidation adjustment</i>	-	-	-	-	-	-	-	-

1. Including Non-residents Securities
2. General Government includes Central Government and Provincial Governments
3. Monetary Survey (Stocks) including Privatization Commission amount in Govt. Deposits
4. Provincial Governments includes Provincial Governments and Local/City Governments

Monetary Statistics



2.4 Monetary Statistics

(Million Rupees)

Last Saturday/ Last working day	Currency in Circulation	Other Deposits with SBP ¹	Currency in tills of Scheduled Banks	Banks' Deposits with SBP	Reserve Money (M ₀) (1+2+3+4)	Total Deposits Excluding RFCDs	Resident Foreign Currency Deposits	Total Deposits Including RFCDs	Broad Money (M ₂) (1+2+8)	Money Multi- plier (9/5)	
											1
2003	Jun.	494,577	3,499	30,415	140,990	669,481	1,454,261	126,138	1,580,399	2,078,475	3.10
	Dec.	567,519	3,495	30,273	145,224	746,511	1,557,597	135,019	1,692,616	2,263,630	3.03
2004	Jun.	578,116	2,116	36,432	156,204	772,868	1,759,566	145,694	1,905,260	2,485,492	3.22
	Dec.	655,283	5,499	38,836	196,348	895,966	1,895,052	172,493	2,067,545	2,728,327	3.05
2005	Jun.	665,901	3,335	43,472	196,302	909,010	2,111,113	180,295	2,291,408	2,960,644	3.26
	Dec.	731,749	3,327	42,527	207,750	985,352	2,266,913	189,525	2,456,438	3,191,513	3.24
2006	Jun.	740,390	4,931	48,439	207,574	1,001,334	2,466,083	195,501	2,661,584	3,406,905	3.40
	Dec.	874,260	4,798	48,367	264,356	1,191,781	2,596,030	198,719	2,794,749	3,673,807	3.08
2007	Jun.	840,181	7,012	58,072	305,169	1,210,434	3,010,650	207,312	3,217,962	4,065,155	3.36
	Dec.	1,007,831	5,153	68,371	286,560	1,367,915	3,165,819	228,042	3,393,861	4,406,846	3.22
2007	Jan.	837,338	4,827	49,615	253,470	1,145,250	2,582,922	199,798	2,782,720	3,624,885	3.17
	Feb.	837,156	4,945	47,276	265,158	1,154,536	2,625,228	197,243	2,822,471	3,664,573	3.17
	Mar.	834,524	5,595	49,615	262,228	1,151,961	2,748,098	200,484	2,948,582	3,788,701	3.29
	Apr.	839,602	6,099	48,218	257,617	1,151,537	2,775,664	199,955	2,975,619	3,821,320	3.32
	May.	858,309	6,136	49,860	275,035	1,189,339	2,803,603	202,807	3,006,410	3,870,856	3.25
	Jun.	840,181	7,012	58,072	305,169	1,210,434	3,010,650	207,312	3,217,962	4,065,155	3.36
	Jul.	847,083	6,226	53,416	282,376	1,189,100	2,927,867	209,106	3,136,973	3,990,282	3.36
	Aug.	845,784	5,852	53,178	272,719	1,177,533	2,948,589	212,317	3,160,905	4,012,541	3.41
	Sep.	874,919	5,454	58,176	280,010	1,218,560	3,024,749	215,048	3,239,797	4,120,170	3.38
	Oct.	917,590	5,150	57,405	276,034	1,256,179	2,975,067	220,203	3,195,271	4,118,010	3.28
	Nov.	942,631	5,103	55,132	292,145	1,295,011	2,982,783	222,533	3,205,317	4,153,051	3.21
	Dec.	1,007,831	5,153	68,371	286,560	1,367,915	3,165,819	228,042	3,393,861	4,406,846	3.22
2008	Jan.	989,245	5,074	56,288	255,664	1,306,270	3,074,672	232,699	3,307,371	4,301,690	3.29

Source: Monetary Policy Department, SBP

1- Excluding IMF A/c Nos. 1 & 2, SAF loan account, counterpart funds, deposits of foreign central banks, foreign governments, international organizations and deposit money banks.

Note : i - Data is based on weekly returns. The quarterly data covers the period up to the last working day and the Monthly data up to the last Saturday of the month.

ii-Compilation of M1 based on weekly data has been discontinued. Now M1 is being compiled on the basis of monthly returns and is given in Table 2.1

2.5 Analysis of Causative Factors for Changes in Monetary Statistics

(Million Rupees)

	2004-05			2005-06		
	Jul.-Dec.	Jan.-Jun.	Total	Jul.-Dec.	Jan.-Jun.	Total
1. Public Sector	28,891	62,251	91,141	64,281	22,598	86,879
i) Budgetary support	23,763	43,389	67,152	80,232	(13,169)	67,063
ii) Commodity operations	3,797	18,166	21,963	(15,123)	35,048	19,926
iii) Effect of Zakat fund etc.	1,331	695	2,026	(829)	719	(110)
2. Credit to Non-Government Sector (A+B+C)	268,907	149,792	418,699	294,145	114,255	408,401
(A) Credit to private Sector	284,703	153,145	437,848	297,651	104,146	401,797
i) Commercial Banks	284,581	152,149	436,730	295,864	121,548	417,411
ii) Specialized Banks	122	996	1,118	1,787	(17,402)	(15,615)
(B) Credit to Public Sector Enterprise (PSEs)	(11,183)	(1,506)	(12,689)	(1,994)	9,636	7,643
i) Autonomous Bodies	(1,543)	(526)	(2,069)	(2,641)	7,396	4,755
ii) Others	(8,886)	(128)	(9,014)	(38)	2,437	2,399
iii) PSEs Special Account-Debt Replacement with SBP	(754)	(852)	(1,606)	686	(197)	489
(C) Other Financial Institutions (SBP Credit to NBFIs)	(4,613)	(1,847)	(6,460)	(1,512)	473	(1,038)
3. Counterpart Funds	(21)	109	88	14	(21)	(7)
4. Other Items (net)	(58,244)	(30,281)	(88,525)	(60,902)	(61,514)	(122,416)
5. Domestic Credit Expansion (+) / Contraction (-) (1+2+3+4)	239,533	181,871	421,404	297,539	75,318	372,857
6. Foreign Assets (net)	3,302	50,446	53,748	(66,670)	140,073	73,403
7. Monetary Expansion ((5+6)	242,834	232,318	475,152	230,869	215,392	446,260

	2007						
	Jan.	Feb.	Mar.	Apr.	May.	Jun.	Jul.
1. Public Sector	(7,588)	23,930	39,369	45,065	49,305	(77,182)	35,860
i) Budgetary support(net)	1,384	33,110	50,092	49,123	9,890	(78,861)	41,317
ii) Commodity operations	(8,534)	(9,127)	(12,445)	(4,361)	39,673	1,518	(5,380)
iii) Effect of Zakat fund etc.	(439)	(53)	1,723	303	(257)	161	(77)
2. Credit to Non-Government Sector (A+B+C)	(23,043)	(6,104)	48,165	7,651	7,521	100,182	(54,840)
(A) Credit to private Sector	(19,620)	(4,049)	44,706	1,964	(2,785)	94,720	(54,469)
i) Commercial Banks	(22,303)	(1,508)	45,870	2,802	(3,157)	93,822	(54,805)
ii) Specialized Banks	2,683	(2,541)	(1,164)	(838)	372	898	336
(B) Credit to Public Sector Enterprise (PSEs)	(3,468)	(363)	3,488	5,569	10,311	5,531	(358)
i) Autonomous Bodies	(3,137)	629	1,013	5,674	4,037	8,479	1,121
ii) Others	(331)	(965)	2,475	(105)	6,282	(2,923)	(1,479)
iii) PSEs Special Account-Debt Replacement with SBP	0	(27)	0	0	(7)	(25)	0
(C) Other Financial Institutions (SBP Credit to NBFIs)	45	(1,692)	(28)	118	(6)	(69)	(13)
3. Counterpart Funds	0	(2)	5	0	(2)	(7)	0
4. Other Items (net)	(41,196)	1,437	(27)	(29,786)	(6,323)	(25,621)	(47,278)
5. Domestic Credit Expansion (+) / Contraction (-) (1+2+3+4)	(71,828)	19,260	87,512	22,930	50,501	(2,629)	(66,258)
6. Foreign Assets (net)	22,906	20,427	36,616	9,689	(965)	196,928	(8,615)
7. Monetary Expansion (+) / Contraction (-) (5+6)	(48,922)	39,687	124,128	32,619	49,536	194,29	(74,873)

Note 1. The composition of autonomous bodies has changed over the years. At present, WAPDA, OGDC, KESC, PTCL, PIA, and Pak. Steel are included in the autonomous bodies.
2. The data has been revised due to inclusion of privatization commission account with NBP in government deposits since Jun 2003 to Jun 2006 (half yearly basis) and Jun 2006 on monthly basis upto end-Jun 2007.

2.5 Analysis of Causative Factors for Changes in Monetary Statistics

(Million Rupees)

	2006-07			2007-08	
	Jul.-Dec.	Jan.-Jun.	Total	Jul.-Dec.	Total
1. Public Sector	19,945	72,899	92,844	201,602	201,602
i) Budgetary support	37,278	64,737	102,015	228,608	228,608
ii) Commodity operations	(15,934)	6,724	(9,210)	(26,000)	(26,000)
iii) Effect of Zakat fund etc.	(1,400)	1,438	39	(1,006)	(1,006)
2. Credit to Non-Government Sector (A+B+C)	251,333	134,371	385,705	274,964	274,964
(A) Credit to private Sector	250,782	114,936	365,718	261,353	261,353
i) Commercial Banks	248,065	115,526	363,591	259,406	259,406
ii) Specialized Banks	2,717	(589)	2,128	1,948	1,948
(B) Credit to Public Sector Enterprise (PSEs)	(1,379)	21,068	19,689	12,518	12,518
i) Autonomous Bodies	4,475	16,694	21,169	18,492	18,492
ii) Others	(5,660)	4,433	(1,227)	1,404	1,404
iii) PSEs Special Account-Debt Replacement with SBP	(194)	(59)	(253)	(25)	(25)
(C) Other Financial Institutions (SBP Credit to NBFIs)	1,930	(1,632)	298	1,092	1,092
3. Counterpart Funds	34	(7)	27	(11)	(11)
4. Other Items (net)	6,640	(101,517)	(94,877)	5,717	5,717
5. Domestic Credit Expansion (+) / Contraction (-) (1+2+3+4)	277,953	105,746	383,699	482,273	482,273
6. Foreign Assets (net)	(11,050)	285,601	274,551	(140,583)	(140,583)
7. Monetary Expansion (5+6)	266,903	391,347	658,250	341,690	341,690

	2007					2008
	Aug.	Sep.	Oct.	Nov.	Dec.	Jan.
1. Public Sector	49,549	(18,561)	(5,069)	53,217	86,606	5,037
i) Budgetary support	48,661	(15,000)	(560)	60,980	93,210	3,716
ii) Commodity operations	(140)	(2,530)	(3,681)	(7,515)	(6,754)	1,311
iii) Effect of Zakat fund etc.	1,029	(1,031)	(829)	(248)	150	10
2. Credit to Non-Government Sector (A+B+C)	8,161	46,840	39,086	65,803	169,914	(11,718)
(A) Credit to private Sector	8,977	41,535	42,188	64,832	158,290	(16,310)
i) Commercial Banks	6,041	41,426	41,854	66,484	158,406	(16,800)
ii) Specialized Banks	2,936	109	335	(1,652)	(116)	490
(B) Credit to Public Sector Enterprise (PSEs)	(702)	4,989	(3,080)	837	10,832	4,581
i) Autonomous Bodies	(590)	3,552	596	4,181	9,632	789
ii) Others	(112)	1,437	3,676	(3,336)	1,218	3,792
iii) PSEs Special Account-Debt Replacement with SBP	0	0	0	(7)	(18)	0
(C) Other Financial Institutions (SBP Credit to NBFIs)	(115)	316	(22)	133	793	11
3. Counterpart Funds	(2)	0	0	(2)	(7)	0
4. Other Items (net)	(3,441)	61,903	(34,712)	(30,771)	60,016	(67,402)
5. Domestic Credit Expansion (+) / Contraction (-) (1+2+3+4)	54,267	90,183	(695)	88,247	316,529	(74,083)
6. Foreign Assets (net)	(32,008)	17,446	(1,465)	(53,207)	(62,734)	(31,073)
7. Monetary Expansion (+) /Contraction (-) (5+6)	22,259	107,629	(2,160)	35,040	253,795	(105,156)

Source: Monetary .Policy.Department.SBP

2.6 Liabilities and Assets of the State Bank of Pakistan Issue Department

(Million Rupees)

Last Saturday/ Last working day	LIABILITIES				ASSETS					Rupee Coins / Notes
	Notes held in the Banking Department	Notes in Circulation	Total Liabilities / Assets	Gold and Foreign Assets						
				(1) Gold Coins and Bullion	(2) Approved Foreign Exchange	(3) India Notes	Total			
2003	Jun.	214.2	522,676.9	522,891.1	41,246.5	459,116.6	535.2	500,898.3	2,351.1	
	Dec.	125.8	595,159.2	595,285.0	41,257.0	514,517.5	535.2	556,309.6	2,434.6	
2004	Jun.	160.8	611,742.9	611,903.7	47,532.1	514,138.8	543.8	562,214.7	2,799.2	
	Dec.	126.0	690,946.2	691,072.2	47,532.1	434,236.5	543.8	482,312.4	3,067.7	
2005	Jun.	145.6	705,720.1	705,865.7	53,870.0	484,308.4	593.0	538,771.4	2,961.2	
	Dec.	156.6	769,617.5	769,774.1	53,870.0	426,373.5	593.0	480,836.5	2,469.6	
2006	Jun.	139.3	784,235.9	784,375.2	76,317.3	567,347.6	562.6	644,227.4	2,865.5	
	Dec.	140.9	917,808.9	917,949.9	76,317.3	561,728.7	562.6	638,608.5	2,640.0	
2007	Jun.	135.6	893,292.8	893,428.4	81,277.1	697,851.6	638.2	779,767.0	3,012.3	
	Dec.	187.7	1,076,328.6	1,076,516.3	99,127.4	699,199.5	638.2	798,965.2	2,730.4	
2007	Feb.	205.1	879,550.4	879,755.6	76,317.3	572,211.3	562.6	649,091.2	2,945.7	
	Mar.	198.2	879,275.0	879,473.0	76,317.3	594,167.0	562.6	671,046.9	2,963.5	
	Apr.	199.4	882,947.4	883,146.8	76,317.3	613,538.4	562.6	690,418.2	2,937.0	
	May.	168.3	903,257.3	903,425.5	76,317.3	611,527.6	562.6	688,407.4	2,915.7	
	Jun.	135.6	893,292.8	893,428.4	81,277.1	697,851.6	638.2	779,767.0	3,012.3	
	Jul.	190.2	895,504.4	895,694.6	81,277.1	661,013.3	638.2	742,928.6	2,978.5	
	Aug.	159.6	894,001.9	894,161.5	83,082.5	703,741.8	638.2	787,462.5	2,945.4	
	Sep.	193.1	927,989.9	928,183.0	93,238.4	703,048.2	638.2	796,924.9	2,866.9	
	Oct.	163.1	969,842.4	970,005.5	93,408.2	761,605.3	638.2	855,651.8	2,819.6	
	Nov.	195.2	992,576.4	992,771.5	99,182.1	752,272.6	638.2	852,092.9	2,785.6	
	Dec.	187.7	1,076,328.6	1,076,516.3	99,127.4	699,199.5	638.2	798,965.2	2,730.4	
2008	Jan.	126.0	1,040,269.2	1,040,395.2	106,361.1	686,878.0	638.2	793,877.4	2,709.2	
	Feb.	130.4	1,050,242.4	1,050,372.8	119,671.5	623,222.0	638.2	743,531.9	2,686.9	

2.6 Liabilities and Assets of the State Bank of Pakistan Issue Department

(Million Rupees)

Last Saturday/ Last working day	ASSETS								
	Domestic Assets				With Reserve Bank of India pending transfer to Pakistan				
	Govt. of Pakistan Securities	Exchange & other Commercial Papers	Internal Bills of	Total	Gold Coins and Bullion	Sterling Securities	Govt. of India Securities	Rupee Coin	Total
2003	Jun.	18,558.7	78.5	20,988.3	671.7	316.5	12.6	3.7	1,004.5
	Dec.	35,457.8	78.5	37,970.9	671.7	316.5	12.6	3.7	1,004.5
2004	Jun.	45,671.5	78.5	48,549.2	773.1	350.1	12.8	3.8	1,139.8
	Dec.	204,473.9	78.5	207,620.1	773.1	350.1	12.8	3.8	1,139.8
2005	Jun.	162,802.6	78.5	165,842.3	876.2	357.8	13.9	4.1	1,252.0
	Dec.	285,137.5	78.5	287,685.7	876.2	357.8	13.9	4.1	1,252.0
2006	Jun.	135,585.4	78.5	138,529.4	1,240.4	360.9	13.2	3.9	1,618.4
	Dec.	275,004.4	78.5	277,722.9	1,240.4	360.9	13.2	3.9	1,618.4
2007	Jun.	108,830.3	78.5	111,921.1	1,320.9	400.1	15.0	4.4	1,740.3
	Dec.	272,714.7	78.5	275,523.6	1,608.1	400.1	15.0	4.4	2,027.5
2007	Feb.	226,021.7	78.5	229,045.9	1,240.4	360.9	13.2	3.9	1,618.4
	Mar.	203,766.0	78.5	206,808.0	1,240.4	360.9	13.2	3.9	1,618.4
	Apr.	188,094.7	78.5	191,110.1	1,240.4	360.9	13.2	3.9	1,618.4
	May.	210,405.5	78.5	213,399.7	1,240.4	360.9	13.2	3.9	1,618.4
	Jun.	108,830.3	78.5	111,921.1	1,320.9	400.1	15.0	4.4	1,740.3
	Jul.	147,968.7	78.5	151,025.7	1,320.9	400.1	15.0	4.4	1,740.3
	Aug.	101,905.4	78.5	104,929.3	1,350.2	400.1	15.0	4.4	1,769.7
	Sep.	126,378.0	78.5	129,323.4	1,515.3	400.1	15.0	4.4	1,934.7
	Oct.	109,520.9	78.5	112,419.0	1,515.3	400.1	15.0	4.4	1,934.7
	Nov.	135,786.1	78.5	138,650.2	1,609.0	400.1	15.0	4.4	2,028.4
	Dec.	272,714.7	78.5	275,523.6	1,608.1	400.1	15.0	4.4	2,027.5
	2008	Jan.	241,585.2	78.5	244,372.9	1,725.9	400.1	15.0	4.4
Feb.		301,714.8	78.5	304,480.1	1,941.4	400.1	15.0	4.4	2,360.8

1 Gold is valued at end financial year (June) on the basis of closing London Market Rate.

Source: Finance Department SBP

2 Approved Foreign Exchanges includes SDR held with IMF w.e.f June2004

3 Receivable from Reserve Bank of India.

2.7 Liabilities and Assets of the State Bank of Pakistan Banking Department

(Million Rupees)

		L I A B I L I T I E S												
Last Saturday/ Last working day									D e p o s i t s				Total	
		Capital Paid-up	Reserve Fund	Rural Credit Fund	Industrial Credit Fund	Export Credit Fund	Loans Guar- antee Fund	Housing Credit Fund	Federal Govt.	Provincial Govts.	Banks	Others		
2003	Jun.	100.0	5,414.5	2,600.0	1,600.0	1,500.0	900.0	4,700.0	36,841.9	32,836.0	140,989.7	285,682.1	496,349.7	
	Dec.	100.0	5,414.5	2,600.0	1,600.0	1,500.0	900.0	4,700.0	23,879.4	30,664.6	145,224.3	282,551.3	482,319.6	
2004	Jun.	100.0	5,414.5	2,600.0	1,600.0	1,500.0	900.0	4,700.0	2,681.5	34,207.5	156,204.2	273,562.7	466,655.8	
	Dec.	100.0	5,414.5	2,600.0	1,600.0	1,500.0	900.0	4,700.0	2,272.7	44,738.5	196,347.7	290,348.5	533,707.4	
2005	Jun.	100.0	5,414.5	2,600.0	1,600.0	1,500.0	900.0	4,700.0	47,286.1	45,632.0	196,302.3	273,550.2	562,770.6	
	Dec.	100.0	15,414.5	2,600.0	1,600.0	1,500.0	900.0	4,700.0	86,850.0	58,127.1	207,749.7	273,412.8	626,139.6	
2006	Jun.	100.0	15,414.5	2,600.0	1,600.0	1,500.0	900.0	4,700.0	69,952.5	66,644.6	207,574.3	273,897.5	618,068.8	
	Dec.	100.0	34,556.5	2,600.0	1,600.0	1,500.0	900.0	4,700.0	49,197.5	50,380.5	264,356.0	272,486.9	636,420.8	
2007	Jun.	100.0	55,838.8	2,600.0	1,600.0	1,500.0	900.0	4,700.0	72,131.9	62,565.7	305,168.6	273,718.3	713,584.5	
	Dec.	100.0	64,978.6	2,600.0	1,600.0	1,500.0	900.0	4,700.0	34,481.4	22,104.5	256,759.3	277,267.5	590,612.7	
2007	Feb.	100.0	34,556.5	2,600.0	1,600.0	1,500.0	900.0	4,700.0	49,844.9	55,092.6	265,158.4	271,517.9	641,613.8	
	Mar.	100.0	34,556.5	2,600.0	1,600.0	1,500.0	900.0	4,700.0	34,563.4	92,483.1	262,228.0	272,614.2	661,888.7	
	Apr.	100.0	34,556.5	2,600.0	1,600.0	1,500.0	900.0	4,700.0	59,675.6	48,701.0	257,617.3	272,742.9	638,736.8	
	May.	100.0	34,556.5	2,600.0	1,600.0	1,500.0	900.0	4,700.0	57,631.8	46,543.9	275,034.5	270,712.6	649,922.8	
	Jun.	100.0	55,838.8	2,600.0	1,600.0	1,500.0	900.0	4,700.0	72,131.9	62,565.7	305,168.6	273,718.3	713,584.5	
	Jul.	100.0	55,838.8	2,600.0	1,600.0	1,500.0	900.0	4,700.0	44,950.5	43,849.0	282,375.6	273,792.2	644,967.3	
	Aug.	100.0	55,838.8	2,600.0	1,600.0	1,500.0	900.0	4,700.0	48,616.3	49,689.2	272,718.8	273,949.0	644,973.3	
	Sep.	100.0	55,838.8	2,600.0	1,600.0	1,500.0	900.0	4,700.0	24,169.2	73,953.0	280,010.3	277,320.0	655,452.5	
	Oct.	100.0	64,978.6	2,600.0	1,600.0	1,500.0	900.0	4,700.0	24,402.2	35,138.2	276,034.3	275,259.3	610,834.0	
	Nov.	100.0	64,978.6	2,600.0	1,600.0	1,500.0	900.0	4,700.0	19,087.0	32,864.2	292,144.9	277,745.8	621,841.9	
	Dec.	100.0	64,978.6	2,600.0	1,600.0	1,500.0	900.0	4,700.0	34,481.4	22,104.5	256,759.3	277,267.5	590,612.7	
	2008	Jan.	100.0	64,978.6	2,600.0	1,600.0	1,500.0	900.0	4,700.0	29,879.5	49,060.7	255,663.7	277,204.2	611,808.1
		Feb.	100.0	64,978.6	2,600.0	1,600.0	1,500.0	900.0	4,700.0	43,637.6	46,439.3	275,255.0	277,528.5	642,860.4

2.7 Liabilities and Assets of the State Bank of Pakistan Banking Department

(Million Rupees)

Last Saturday/ Last working day	LIABILITIES					A S S E T S					
	Allocation of Special Drawing Rights	Bills Payable	Re- valuation Accounts	Other Liabi- lities	Total Liabilities/ Assets	Notes and Coins ¹	Bills Purchased and Discounted			Total	
							Internal				
						Export Sector	Others				
2003	Jun.	1,526.0	671.9	38,883.2	35,628.3	589,873.6	214.3	3.6	33.4	37.0	
	Dec.	1,526.0	143.0	38,883.2	33,967.6	573,653.9	125.8	3.6	33.4	37.0	
2004	Jun.	1,526.0	494.4	45,205.6	38,946.0	569,642.3	160.8	3.6	33.4	37.0	
	Dec.	1,526.0	251.0	45,205.6	57,064.6	654,569.0	126.0	3.6	33.4	37.0	
2005	Jun.	1,526.0	1,099.7	51,646.6	54,792.1	688,649.3	145.6	3.6	33.4	37.0	
	Dec.	1,526.0	118.5	51,646.6	87,784.8	794,029.9	156.6	3.6	33.4	37.0	
2006	Jun.	1,526.0	472.7	74,406.9	183,199.2	904,488.6	139.3	3.6	33.4	37.0	
	Dec.	1,526.0	152.8	74,406.9	112,684.2	871,147.1	140.9	3.6	33.4	37.0	
2007	Jun.	1,526.0	571.9	79,440.9	176,548.6	1,038,910.7	135.6	3.6	33.4	37.0	
	Dec.	1,526.0	493.5	97,408.6	124,938.3	891,357.7	187.7	3.6	33.4	37.0	
2007	Feb.	1,526.0	574.6	74,406.9	118,738.1	882,815.7	205.1	3.6	33.4	37.0	
	Mar.	1,526.0	244.2	74,406.9	151,358.5	935,380.7	198.2	3.6	33.4	37.0	
	Apr.	1,526.0	182.4	74,406.9	135,794.9	896,603.6	199.4	3.6	33.4	37.0	
	May	1,526.0	150.9	74,406.9	148,416.3	920,379.4	168.3	3.6	33.4	37.0	
	Jun.	1,526.0	571.9	79,440.9	176,548.6	1,038,910.7	135.6	3.6	33.4	37.0	
	Jul.	1,526.0	462.4	79,440.9	150,315.9	943,951.2	190.2	3.6	33.4	37.0	
	Aug.	1,526.0	822.1	81,275.7	170,382.0	966,217.8	159.6	3.6	33.4	37.0	
	Sep.	1,526.0	309.8	91,596.6	89,539.7	905,663.4	193.1	3.6	33.4	37.0	
	Oct.	1,526.0	223.3	91,596.6	88,260.6	868,819.2	163.1	3.6	33.4	37.0	
	Nov.	1,526.0	437.2	97,464.2	125,088.7	922,736.6	195.2	3.6	33.4	37.0	
	Dec.	1,526.0	493.5	97,408.6	124,938.3	891,357.7	187.7	3.6	33.4	37.0	
	2008	Jan.	1,526.0	165.5	104,759.6	155,020.6	949,658.4	126.0	3.6	33.4	37.0
		Feb.	1,526.0	203.2	118,286.0	152,003.0	991,257.2	130.4	3.6	33.4	37.0

¹ Includes all coins of various denominations

(Contd.)

2.7 Liabilities and Assets of the State Bank of Pakistan Banking Department

(Million Rupees)

		A S S E T S								
Last Saturday/ Last working day	Balance held outside Pakistan		SDR held with IMF	Govt. Debtor Balances	Loans and Advances to Scheduled Banks					Total (a)
	Pakistan	-			Agri-cultural Sector	Indus-trial Sector	Export Sector	Housing Sector	Others	
2003	Jun.	104,384.6	14,092.1	-	55,686.8	2,800.3	56,780.4	66.9	15,214.1	130,548.5
	Dec.	104,834.5	14,136.1	319.3	55,353.1	2,563.9	77,303.2	66.9	13,992.6	149,279.7
2004	Jun.	132,021.4	-	5,533.1	58,005.3	2,328.8	88,292.3	66.9	13,194.5	161,887.8
	Dec.	147,057.8	2,284.8	7,241.5	60,737.4	1,169.4	102,522.5	-	9,179.9	173,609.2
2005	Jun.	139,513.0	1,774.6	10,814.0	59,753.3	1,498.5	109,446.9	-	11,288.6	181,987.3
	Dec.	167,964.8	1,370.3	14,503.1	63,627.6	3,066.9	106,386.3	-	13,102.5	186,183.4
2006	Jun.	121,824.0	1,088.6	16,404.3	62,194.7	7,297.3	107,982.2	-	16,104.3	193,578.5
	Dec.	128,433.7	758.6	6,560.1	63,183.5	41,382.5	131,733.6	-	14,416.2	250,715.8
2007	Jun.	152,719.3	418.5	10,820.4	62,228.2	42,149.7	134,621.3	-	14,420.1	253,419.3
	Dec.	151,435.5	314.0	23,628.8	57,776.5	40,386.3	100,060.1	-	14,232.1	212,455.0
2007	Feb.	138,013.0	687.6	14,645.0	59,183.5	42,046.9	135,467.9	-	14,418.2	251,116.5
	Mar.	137,224.5	692.0	9,533.7	60,183.5	41,462.6	135,736.4	-	14,418.2	251,800.7
2007	Apr.	125,611.0	704.4	12,722.1	60,183.5	41,776.6	138,364.0	-	14,418.2	254,742.3
	May.	136,311.1	631.8	10,268.3	60,183.5	42,205.8	138,394.0	-	14,418.2	255,201.5
2007	Jun.	152,719.3	418.5	10,820.4	62,228.2	42,149.7	134,621.3	-	14,420.1	253,419.3
	Jul.	190,034.2	421.6	12,125.6	58,228.2	41,605.6	137,866.5	-	14,420.1	252,120.4
2007	Aug.	160,347.1	394.3	12,715.6	58,192.1	41,088.5	120,836.8	-	14,420.1	234,537.5
	Sep.	183,923.8	367.3	11,562.7	57,955.9	40,014.7	100,461.2	-	14,232.1	212,663.9
2007	Oct.	141,161.4	370.0	13,306.2	57,955.9	39,625.8	100,159.6	-	14,232.1	211,973.4
	Nov.	142,185.0	319.4	14,347.2	57,856.0	40,094.4	100,582.4	-	14,232.1	212,764.8
2007	Dec.	151,435.5	314.0	23,628.8	57,776.5	40,386.3	100,060.1	-	14,232.1	212,455.0
	2008	Jan.	136,422.8	103.2	16,287.2	57,777.3	39,724.9	97,606.1	-	14,233.9
2008	Feb.	140,671.2	83.4	17,270.9	49,777.3	39,593.4	97,357.4	-	14,233.9	200,962.0

2.7 Liabilities and Assets of the State Bank of Pakistan Banking Department

(Concl'd.)
(Million Rupees)

Last Saturday/ Last working day		A S S E T S											
		Loans and Advances to Non-Bank Financial Institutions				Other Loans	I n v e s t m e n t s						Other Assets
		Indus- trial Sector	Housing Sector	Others	Total (b)	And Advances (a+b)	Sche- duled Banks	Non-Bank Financial Institutions	Govt. Securities	Others	Total		
2003	Jun.	5,191.0	14,157.3	8,037.5	27,385.8	157,934.3	38,954.7	2,497.1	91,753.6	907.6	134,112.9	179,098.3	
	Dec.	4,440.4	13,857.3	4,786.7	23,084.4	172,364.1	38,954.7	2,497.1	36,747.5	907.6	79,106.9	202,730.2	
2004	Jun.	4,418.0	12,607.3	4,219.8	21,245.1	183,132.9	34,000.8	1,747.1	87,524.9	1,291.2	124,564.0	124,193.1	
	Dec.	608.1	12,607.3	3,416.7	16,632.1	190,241.3	34,000.8	1,747.1	149,989.0	1,331.2	187,068.1	120,512.6	
2005	Jun.	595.0	11,242.3	3,416.7	15,254.0	197,241.4	28,273.8	1,673.4	168,392.0	933.5	199,272.6	139,850.8	
	Dec.	358.3	11,242.3	2,141.7	13,742.3	199,925.7	28,273.8	1,673.4	249,452.0	890.9	280,290.1	129,782.4	
2006	Jun.	831.7	11,242.3	2,141.7	14,215.7	207,794.2	24,664.3	1,673.4	380,997.3	1,043.2	408,378.1	148,823.1	
	Dec.	2,832.0	11,242.3	2,071.7	16,146.0	266,861.8	25,104.3	1,673.4	292,215.7	1,029.5	320,022.9	148,332.1	
2007	Jun.	2,831.3	11,242.3	-	14,073.6	267,492.9	18,058.5	2,113.4	351,843.9	1,051.0	373,066.8	234,220.1	
	Dec.	2,784.4	11,242.3	-	14,026.7	226,481.7	15,568.9	3,313.4	299,369.8	1,126.0	319,378.0	169,895.0	
2007	Feb.	2,711.4	11,242.3	545.0	14,498.7	265,615.2	25,104.3	1,673.4	284,163.3	987.0	311,927.9	151,684.9	
	Mar.	2,788.1	11,242.3	-	14,030.4	265,831.1	24,664.3	2,113.4	342,535.0	1,033.2	370,345.9	151,518.4	
	Apr.	2,906.2	11,242.3	-	14,148.5	268,890.8	24,664.3	2,113.4	306,639.3	1,019.6	334,436.5	154,002.5	
	May	2,900.6	11,242.3	-	14,142.9	269,344.4	24,664.3	2,113.4	301,036.0	1,017.4	328,831.0	174,787.5	
	Jun.	2,831.3	11,242.3	-	14,073.6	267,492.9	18,058.5	2,113.4	351,843.9	1,051.0	373,066.8	234,220.1	
	Jul.	2,818.7	11,242.3	-	14,061	266,181.4	17,067.6	2,113.4	261,352.2	1,051.0	281,584.2	193,377.2	
	Aug.	2,704.0	11,242.3	-	13,946.3	248,483.8	17,467.6	2,113.4	345,222.4	1,051.0	365,854.4	178,226.0	
	Sep.	2,620.1	11,242.3	-	13,862.4	226,526.3	17,067.6	2,513.4	288,071.6	1,051.0	308,703.6	174,349.6	
	Oct.	2,598.5	11,242.3	-	13,840.8	225,814.2	17,067.6	2,513.4	295,887.4	1,051.0	316,519.4	171,447.9	
	Nov.	2,731.7	11,242.3	-	13,974.0	226,738.8	15,568.9	2,513.4	359,625.6	1,051.0	378,758.8	160,155.4	
	Dec.	2,784.4	11,242.3	-	14,026.7	226,481.7	15,568.9	3,313.4	299,369.8	1,126.0	319,378.0	169,895.0	
2008	Jan.	2,735.4	11,242.3	-	13,977.7	223,319.9	16,068.9	3,313.4	396,402.4	1,126.0	416,910.6	156,451.8	
	Feb.	2,926.6	11,242.3	-	14,168.9	215,130.9	16,068.8	3,313.4	439,709.3	1,126.0	460,217.5	157,716.0	

Source: Finance Department SBP

2.8 Scheduled Bank's Consolidated Position

Based on weekly position Liabilities & Assets (All Banks)

(Million Rupees)

Financial Position	2005		2006		2007			
	Dec.	Jun.	Dec.	Feb.	Mar.	Apr.	May.	Jun.
ASSETS								
Cash & Balances With Treasury Banks	270,185	273,896	332,452	321,821	322,678	320,915	337,580	397,352
Balances With Other Banks	111,638	120,345	140,575	156,924	175,772	167,425	148,960	200,104
Lending To Financial Institutions	198,618	226,451	192,343	205,285	192,127	199,604	171,253	269,120
Investments - Net	730,067	794,584	775,546	872,426	929,454	1,022,787	1,048,978	1,115,913
Advances – Net of Provision	1,908,067	2,005,658	2,281,866	2,228,153	2,251,930	2,253,633	2,296,813	2,350,810
Gross Advances	2,043,982	2,127,388	2,409,478	2,358,720	2,385,242	2,387,597	2,430,090	2,484,495
Less: Provision for Non- Performing Advances	135,914	121,730	127,611	130,567	133,313	133,964	133,277	133,686
Operating Fixed Assets	65,856	72,659	107,745	112,704	120,447	122,336	124,047	127,031
Deferred Tax Assets	8,258	6,760	7,988	7,633	7,866	7,984	8,047	8,144
Other Assets	167,386	172,644	217,731	202,424	220,770	202,416	193,673	233,167
TOTAL ASSETS	3,460,076	3,672,997	4,056,246	4,107,369	4,221,045	4,297,101	4,329,351	4,701,641
LIABILITIES								
Bills Payable	45,404	47,282	55,177	50,364	52,516	53,570	50,674	56,992
Borrowings	336,301	361,080	420,080	425,687	393,968	426,994	403,459	497,065
Deposits and Other Accounts	2,661,697	2,786,731	2,999,895	3,034,321	3,151,944	3,177,075	3,226,117	3,460,811
Sub-ordinated Loans	20,723	21,721	26,967	26,264	27,764	27,744	27,743	27,488
Liabilities Against Assets Subject to Finance Lease	619	740	898	944	901	893	1,022	1,068
Other Liabilities	122,605	133,514	150,308	146,880	154,554	154,097	155,726	165,221
Deferred Tax Liabilities	2,473	8,554	7,357	6,585	8,860	8,766	8,830	8,700
TOTAL LIABILITIES	3,189,822	3,359,621	3,660,683	3,691,046	3,790,508	3,849,139	3,873,572	4,217,345
NET ASSETS	270,254	313,376	395,563	416,323	430,537	447,963	455,780	484,296
REPRESENTED BY:								
Paid up Capital / Head Office Capital Account	105,789	119,860	165,477	168,895	180,299	186,320	190,642	205,895
Reserves	70,754	89,780	102,928	117,200	125,493	124,501	129,967	129,050
Unappropriated / Unremitted Profit	36,397	33,428	63,520	62,676	57,160	63,858	57,656	68,707
Surplus/ (Deficit) On Revaluation Of Assets	57,314	70,308	63,638	67,553	67,585	73,283	77,514	80,645
TOTAL	270,254	313,376	395,563	416,323	430,537	447,963	455,780	484,296

Format of weekly statement of position has been redesigned from the month of July 05.

2.8 Scheduled Bank's Consolidated Position

Based on weekly position Liabilities & Assets (All Banks)

(Million Rupees)

Financial Position	2007						2008	
	Jul.	Aug.	Sep.	Oct.	Nov.	Dec.	Jan.	Feb.
ASSETS								
Cash & Balances With Treasury Banks	353,082	339,226	356,764	347,539	361,142	343,718	329,250	354,345
Balances With Other Banks	184,321	154,169	160,422	144,473	126,514	134,651	113,601	114,317
Lending To Financial Institutions	191,190	187,130	188,512	195,366	225,555	213,872	204,691	218,375
Investments - Net	1,167,897	1,197,115	1,245,411	1,243,254	1,213,543	1,210,920	1,201,526	1,163,455
Advances – Net of Provision	2,296,412	2,293,617	2,316,858	2,345,740	2,397,616	2,505,900	2,518,078	2,562,216
Gross Advances	2,429,398	2,426,759	2,450,713	2,482,220	2,535,759	2,651,173	2,684,089	2,734,642
Less: Provision for Non-Performing Advances	132,986	133,143	133,855	136,480	138,143	145,272	166,011	172,426
Operating Fixed Assets	128,366	129,641	131,227	134,079	135,916	146,135	176,424	182,468
Deferred Tax Assets	8,067	8,109	5,789	5,886	9,360	10,849	16,287	15,246
Other Assets	213,172	211,121	255,414	238,769	238,749	262,530	258,524	251,966
TOTAL ASSETS	4,542,508	4,520,126	4,660,397	4,655,106	4,708,395	4,828,576	4,818,381	4,862,389
LIABILITIES								
Bills Payable	57,972	58,180	63,870	59,748	59,777	69,242	61,888	56,169
Borrowings	420,608	379,476	394,459	405,156	432,859	439,335	427,231	447,042
Deposits and Other Accounts	3,383,373	3,403,170	3,464,687	3,451,075	3,478,385	3,565,537	3,574,788	3,591,861
Sub-ordinated Loans	27,487	27,623	26,790	26,790	27,539	27,171	27,171	29,790
Liabilities Against Assets Subject to Finance Lease	1,038	1,035	978	972	947	886	867	864
Other Liabilities	161,080	160,233	192,364	188,495	181,073	175,317	169,870	173,316
Deferred Tax Liabilities	8,155	8,520	10,642	10,637	9,496	9,921	10,246	11,694
TOTAL LIABILITIES	4,059,713	4,038,238	4,153,789	4,142,872	4,190,075	4,287,409	4,272,060	4,310,737
NET ASSETS	482,795	481,888	506,607	512,234	518,320	541,167	546,321	551,652
REPRESENTED BY:								
Paid up Capital / Head Office Capital Account	207,528	207,524	223,103	224,163	225,815	228,874	236,847	239,387
Reserves	129,023	129,922	104,591	104,056	107,643	108,921	116,624	118,207
Unappropriated / Unremitted Profit	72,197	78,086	107,071	107,377	108,608	115,538	109,376	111,059
Surplus/ (Deficit) On Revaluation Of Assets	74,046	66,356	71,843	76,638	76,254	87,835	83,474	82,999
TOTAL	482,795	481,888	506,607	512,234	518,320	541,167	546,321	551,652

Source: Finance Department SBP

2.9 Scheduled Banks' Liquidity Position

All Banks¹

(Million Rupees)

Last Saturday	LIQUID LIABILITIES IN PAKISTAN			LIQUID ASSETS MAINTAINED IN PAKISTAN					
	Demand Liabilities	Time Liabilities	Total	Cash in Pakistan	Balance With SBP	Balance With Agents of SBP	Gold	Unencumbered Approved Securities ²	
2003	Jun.	810,812	889,173	1,699,985	30,926	155,472	5,987	0	574,986
	Dec.	917,242	906,630	1,823,872	33,682	122,610	3,661	0	532,752
2004	Jun.	958,869	965,782	1,924,652	33,908	162,595	4,689	0	484,641
	Dec.	1,062,884	995,135	2,058,019	39,440	126,506	4,186	0	408,263
2005	Jun.	1,131,465	1,138,439	2,269,904	42,461	120,668	5,621	0	529,035
	Dec.	1,289,884	1,244,768	2,534,652	50,145	146,530	15,173	0	515,681
2006	Jun.	1,281,332	1,421,594	2,702,926	55,454	159,210	7,529	0	567,416
	Dec.	2,314,909	693,303	3,008,212	61,755	215,476	16,473	0	567,984
2007	Jun.	2,837,195	566,181	3,403,376	76,609	253,059	24,369	0	821,057
	Dec.	3,009,848	476,569	3,486,417	85,334	223,426	11,605	0	812,343
2007	Jan.	2,251,623	673,981	2,925,604	63,382	213,976	7,185	0	592,314
	Feb.	2,298,127	681,241	2,979,368	63,823	216,592	6,753	0	646,757
	Mar.	2,601,704	528,142	3,129,846	63,405	213,311	9,183	0	716,324
	Apr.	2,613,725	542,664	3,156,389	63,644	210,343	7,574	0	769,524
	May.	2,605,793	555,448	3,161,241	61,071	239,941	8,187	0	788,340
	Jun.	2,837,195	566,181	3,403,376	76,609	253,059	24,369	0	821,057
	Jul.	2,743,212	574,834	3,318,046	69,623	241,468	8,629	0	882,002
	Aug.	2,910,754	428,109	3,338,863	69,694	219,393	7,591	0	923,543
	Sep.	2,988,730	451,468	3,440,198	73,539	234,889	10,296	0	873,481
	Oct.	2,905,357	436,512	3,341,869	69,803	222,413	8,467	0	860,554
	Nov.	2,909,956	463,566	3,373,522	69,645	238,143	8,609	0	840,197
	Dec.	3,009,848	476,569	3,486,417	85,334	223,426	11,605	0	812,343
2008	Jan.	2,987,951	495,691	3,483,642	71,209	221,509	9,019	0	839,135

2.9 Scheduled Banks' Liquidity Position All Banks¹

(Million Rupees)

Last Saturday		LIQUID ASSETS MAINTAINED IN PAKISTAN					Minimum of Assets required to be held under Section 29 of the Banking Companies Ordinance	Excess of Assets being held over the minimum required under Section 29 of the Banking Companies Ordinance
		Foreign Banks Deposits with SBP under section 13(3) of the Banking Companies Ordinance						
		Cash	Unencumbered Approved Securities ²	Foreign Currency	Share Capital M F B	Total		
2003	Jun.	60	936	19,828	1,705	789,900	339,997	449,903
	Dec.	560	327	18,799	1,705	714,096	364,774	349,322
2004	Jun.	190	3,601	10,341	1,705	701,670	382,784	318,886
	Dec.	60	129	14,280	1,705	594,569	408,376	186,193
2005	Jun.	60	4,239	15,919	1,675	719,678	450,694	268,984
	Dec.	156	4,020	17,660	1,705	751,070	503,471	247,599
2006	Jun.	156	4,014	19,172	1,705	814,656	537,716	276,940
	Dec.	156	3,981	13,524	1,685	881,034	719,116	161,918
2007	Jun.	0	727	13,397	1,655	1,190,873	821,095	369,778
	Dec.	0	0	10,867	1,658	1,145,233	828,870	316,363
2007	Jan.	156	0	13,941	1,655	892,609	699,192	193,417
	Feb.	156	0	13,941	1,655	949,677	712,094	237,583
	Mar.	156	0	13,941	1,655	1,017,975	755,439	262,536
	Apr.	0	654	13,442	1,655	1,066,836	761,307	305,529
	May.	0	626	13,347	1,655	1,113,167	761,460	351,707
	Jun.	0	727	13,397	1,655	1,190,873	821,095	369,778
	Jul.	0	718	13,395	1,655	1,217,490	798,876	418,614
	Aug.	0	0	13,395	1,655	1,235,271	809,375	425,896
	Sep.	0	0	10,867	1,658	1,204,730	833,296	371,434
	Oct.	0	0	10,867	1,658	1,173,762	796,205	377,557
	Nov.	0	0	10,867	1,658	1,169,119	802,235	366,884
	Dec.	0	0	10,867	1,658	1,145,233	828,870	316,363
2008	Jan.	0	0	11,318	1,658	1,153,848	826,986	326,862

1 Excluding Indian Banks

Source: Finance Department SBP

2 Valued at a price not exceeding current market price

Note : Figures of Demand and Time Liabilities of Scheduled Banks shown in this table may not tally with the corresponding provisional figures appearing in the table 2.7 on page 26 & 27.

MFB : Macro Finance Bank (Khushali Bank)

2.10 NBFCs Consolidated Financial Position

(Million Rupees)

Assets/ Liabilities	Dec 06 ^P			Mar.07 ^P		
	DFIs	NBFCs	Total	DFIs	NBFCs	Total
1. Currency and Deposits	17,342	31,730	49,072	17,299	47,972	65,271
a. Currency	122	521	643	51	260	311
b. Transferable Deposits	0	20,671	20,671	0	35,775	35,775
c. Restricted Deposits	0	1,334	1,334	0	2,074	2,074
d. Other Deposits	17,220	9,204	26,424	17,248	9,863	27,111
2. Investment in securities other than shares	16,302	15,504	31,806	18,656	18,775	37,431
a. Short-term	3,319	3,669	6,988	5,272	3,272	8,544
b. Long-term	12,983	11,835	24,818	13,384	15,503	28,887
3. Loans extended (Advances)	55,550	108,677	164,227	49,950	118,010	167,960
a. Short-term	0	26,335	26,335	0	31,805	31,805
b. Long-term	55,550	82,342	137,892	49,950	86,205	136,155
4. Investment in shares	23,511	133,461	156,972	24,218	142,907	167,125
a. Quoted	23,511	131,631	155,142	24,218	140,557	164,775
b. Non quoted	0	1,830	1,830	0	2,350	2,350
5. Insurance Technical Reserve	0	2	2	0	0	0
a. Life	0	1	1	0	0	0
b. Non-life	0	1	1	0	0	0
6. Financial Derivatives	0	1,215	1,215	0	1,919	1,919
7. Other accounts receivable	8,444	18,269	26,713	7,931	21,999	29,930
8. Non-financial assets	0	7,719	7,719	0	8,606	8,606
a. Produced assets	0	5,488	5,488	0	5,502	5,502
i. Fixed assets	0	5,116	5,116	0	4,823	4,823
ii. Inventories	0	148	148	0	294	294
iii. Valuables	0	0	0	0	0	0
iv. Other produced assets	0	224	224	0	385	385
b. Non-produced assets	0	2,230	2,230	0	3,104	3,104
i. Land	0	1,471	1,471	0	1,478	1,478
ii. Other-non-produced assets	0	759	759	0	1,626	1,626
Total Assets/ Liabilities	121,148	316,578	437,726	118,054	360,188	478,242
1. Deposits	25,830	25,744	51,574	26,134	25,822	51,956
a. Restricted deposits	0	8,149	8,149	0	10,150	10,150
b. Other deposits	25,830	17,595	43,425	26,134	15,672	41,806
2. Securities other than shares (bonds/debentures etc)	0	9,563	9,563	0	7,430	7,430
a. Short-term	0	2,194	2,194	0	1,947	1,947
b. long-term	0	7,369	7,369	0	5,483	5,483
3. Loans (Borrowings)	49,911	60,633	110,544	49,778	63,134	112,912
a. Short-term	5,050	21,156	26,206	225	22,998	23,223
b. Long-term	44,861	39,477	84,338	49,553	40,136	89,689
4. Financial Derivatives	0	148	148	0	1,338	1,338
5. Other accounts payable	4,826	29,748	34,574	3,362	36,294	39,656
6. Shares and other equity	40,582	190,742	231,324	38,781	226,170	264,951
a. Quoted	19,395	98,188	117,583	19,395	112,455	131,850
b. Non quoted	0	23,579	23,579	0	34,256	34,256
c. Retained earnings	0	50,807	50,807	0	54,059	54,059
d. Current year result	3,713	1,960	5,673	658	7,177	7,835
e. General and special reserves	17,474	16,940	34,414	18,728	20,525	39,253
f. Valuation adjustments	0	-732	-732	0	-2,302	-2,302

2.10 NBFCs Consolidated Financial Position

Assets/ Liabilities	(Million Rupees)					
	Jun.07 ^P			Sep.07 ^P		
	DFIs	NBFCs	Total	DFIs	NBFCs	Total
1. Currency and Deposits	11,206	89,838	101,044	13,981	84,792	98,773
a. Currency	60	1,370	1,430	52	1,275	1,327
b. Transferable Deposits	0	65,169	65,169	3,266	60,496	63,762
c. Restricted Deposits	0	3,474	3,474	208	3,349	3,557
d. Other Deposits	11,146	19,825	30,971	10,455	19,672	30,127
2. Investment in securities other than shares	20,044	27,349	47,393	14,400	36,001	50,401
a. Short-term	4,420	6,642	11,062	2,121	6,810	8,931
b. Long-term	15,624	20,707	36,331	12,279	29,191	41,470
3. Loans extended (Advances)	54,197	146,936	201,133	64,426	141,949	206,375
a. Short-term	0	53,607	53,607	16,783	58,981	75,764
b. Long-term	54,197	93,329	147,526	47,643	82,968	130,611
4. Investment in shares	29,216	174,001	203,217	32,978	179,360	212,338
a. Quoted	29,216	172,438	201,654	28,515	175,718	204,233
b. Non quoted	0	1,563	1,563	4,463	3,642	8,105
5. Insurance Technical Reserve	0	0	0	0	0	0
a. Life	0	0	0	0	0	0
b. Non-life	0	0	0	0	0	0
6. Financial Derivatives	0	2,107	2,107	0	1,452	1,452
7. Other accounts receivable	7,344	26,154	33,498	3,495	24,962	28,457
8. Non-financial assets	0	9,021	9,021	3,559	10,170	13,729
a. Produced assets	0	5,949	5,949	3,540	6,263	9,803
i. Fixed assets	0	5,397	5,397	3,540	5,761	9,301
ii. Inventories	0	291	291	0	79	79
iii. Valuables	0	0	0	0	0	0
iv. Other produced assets	0	261	261	0	423	423
b. Non-produced assets	0	3,072	3,072	19	3,907	3,926
i. Land	0	1,740	1,740	19	2,766	2,785
ii. Other-non-produced assets	0	1,332	1,332	0	1,141	1,141
Total Assets/ Liabilities	122,009	475,406	597,415	132,839	478,687	611,526
1. Deposits	24,841	29,323	54,164	25,220	30,035	55,255
a. Restricted deposits	0	12,373	12,373	1,207	13,324	14,531
b. Other deposits	24,841	16,950	41,791	24,013	16,711	40,724
2. Securities other than shares (bonds/debentures etc)	0	10,866	10,866	5,083	11,175	16,258
a. Short-term	0	2,873	2,873	333	1,685	2,018
b. long-term	0	7,993	7,993	4,750	9,490	14,240
3. Loans (Borrowings)	48,389	68,251	116,640	47,828	57,088	104,916
a. Short-term	1,030	26,926	27,956	26,483	25,638	52,121
b. Long-term	47,359	41,325	88,684	21,345	31,450	52,795
4. Financial Derivatives	0	1,350	1,350	0	961	961
5. Other accounts payable	3,427	49,645	53,072	8,521	40,013	48,534
6. Shares and other equity	45,353	315,971	361,324	46,187	339,414	385,601
a. Quoted	19,745	157,168	176,913	5,653	204,845	210,498
b. Non quoted	0	46,254	46,254	20,892	36,416	57,308
c. Retained earnings	0	57,540	57,540	3,557	58,794	62,351
d. Current year result	1,876	20,532	22,408	1,231	3,665	4,896
e. General and special reserves	23,731	33,275	57,006	11,012	29,662	40,674
f. Valuation adjustments	0	1,202	1,202	3,842	6,032	9,874

NBFCs Non Bank Financial Companies

DFIs Development Finance Institutions

2.11 Classification of Deposits with NBFCs

(Million Rupees)

Sector	June 07 ^P			September 07 ^P		
	Depository	Non-Depository	Total	Depository	Non-Depository	Total
1 Non-financial Corporations	19,402	241	19,643	15,344	254	15,598
i Public	1,919	74	1,993	2,999	79	3,078
ii Private	17,483	167	17,650	12,345	175	12,520
2 Financial Corporations	23,528	0	23,528	28,268	0	28,268
i Central Bank	0	0	0	0	0	0
ii Deposit money institutions	15,917	0	15,917	17,848	0	17,848
ii Other deposit accepting institutions	4,699	0	4,699	7,124	0	7,124
iv Financial intermediaries	1,580	0	1,580	2,119	0	2,119
v Financial auxiliaries	437	0	437	249	0	249
vi Insurance and pension funds	895	0	895	928	0	928
3 Central Government	372	0	372	57	0	57
4 Provincial Governments	118	0	118	23	0	23
5 Local Governments	0	0	0	0	0	0
6 Household	10,203	5	10,208	10,984	5	10,989
7 Non-profit Institutions (NPIs) Serving Households	291	0	291	315	0	315
8 Non-residents	5	0	5	5	0	5
9 Foreign Currency	0	0	0	0	0	0
Total	53,919	246	54,165	54,996	259	55,255

2.12 Classification of NBFC's Loans Extended(Advances)

(Million Rupees)

Sector	June 07 ^P			September 07 ^P		
	Depository	Non-Depository	Total	Depository	Non-Depository	Total
1 Non-financial corporations	104,787	9,485	114,272	89,674	8,971	98,645
i Public	1,683	223	1,906	1,661	363	2,024
ii Private	103,104	9,262	112,366	88,013	8,608	96,621
2 Financial Corporations	15,461	35,769	51,230	20,198	39,903	60,101
i Central Bank	0	0	0	0	0	0
ii Deposit money institutions	7,113	12,980	20,093	9,986	7,708	17,694
ii Other deposit accepting institutions	2,869	2,974	5,843	5,104	5,566	10,670
iv Financial intermediaries	1,288	3,939	5,227	844	8,902	9,746
v Financial auxiliaries	4,133	15,874	20,007	4,206	17,725	21,931
vi Insurance and pension funds	58	2	60	58	2	60
3 Central Government	105	0	105	2	0	2
4 Provincial Governments	0	0	0	0	0	0
5 Local Governments	0	0	0	0	0	0
6 Household	13,062	12,221	25,283	30,414	138	30,552
7 Non-profit Institutions (NPIs) Serving Households	20	0	20	19	0	19
8 Non-Residents	0	0	0	0	0	0
9 Bills purchased and discounted (inland bills)	0	198	198	50	121	171
10 Other Advances and Financial Leases	2,939	7,085	10,024	9,383	7,505	16,888
Total	136,374	64,758	201,132	149,740	56,638	206,378

2.13 Classification of NBFC's Investments in Securities and Shares

(Million Rupees)

Securities/Shares	June 07 ^P			September 07 ^P		
	Depository	Non-Depository	Total	Depository	Non-Depository	Total
A. Securities	27,233	20,159	47,392	21,749	28,652	50,401
1 Non-financial Corporations	10,309	8,940	19,249	6,205	14,164	20,369
i Public	733	1,290	2,023	1,241	1,420	2,661
ii Private	9,576	7,650	17,226	4,964	12,744	17,708
2 Financial Corporations	4,803	7,721	12,524	4,233	11,262	15,495
i Central Bank	-	-	-	-	-	-
ii Deposit money institutions	4,158	4,531	8,689	2,695	5,076	7,771
ii Other deposit accepting institutions	396	1,444	1,840	1,081	2,741	3,822
iv Financial intermediaries	179	1,746	1,925	457	3,445	3,902
v Financial auxiliaries	-	-	-	-	-	-
vi Insurance and pension funds	70	-	70	-	-	-
3 Central Government	12,070	3,499	15,569	10,998	3,226	14,224
4 Provincial Governments	-	-	-	-	-	-
5 Local Governments	-	-	-	-	-	-
6 Household	-	-	-	-	-	-
7 Non-profit institutions (NPIs) Serving Households	-	-	-	-	-	-
8 Non-Residents	-	-	-	-	-	-
9 Foreign Currency	51	-	51	313	-	313
B. Shares	41,148	162,069	203,217	44,596	167,743	212,339
1 Non-financial Corporations	35,701	146,285	181,986	24,181	151,728	175,909
i Public	5,092	127,255	132,347	6,079	128,811	134,890
ii Private	30,609	19,030	49,639	18,102	22,917	41,019
2 Financial Corporations	4,466	15,573	20,039	19,389	15,791	35,180
i Central Bank	-	-	-	-	-	-
ii Deposit money institutions	1,791	7,124	8,915	11,223	6,404	17,627
ii Other deposit accepting institutions	1,021	1,886	2,907	1,198	2,384	3,582
iv Financial intermediaries	1,357	4,876	6,233	6,338	5,416	11,754
v Financial auxiliaries	118	20	138	118	5	123
vi Insurance and pension funds	179	1,667	1,846	512	1,582	2,094
3 Central Government	-	-	-	-	-	-
4 Provincial Governments	-	-	-	-	-	-
5 Local Governments	-	-	-	-	-	-
6 Household	-	-	-	-	-	-
7 Non-profit institutions (NPIs) Serving Households	-	-	-	-	-	-
8 Non-residents	981	211	1,192	1,026	223	1,249
Total (A+B)	68,381	182,228	250,609	66,345	196,395	262,740

2.14 Currency in Circulation

(Million Rupees)

END OF PERIOD	One Rupee		Five Rupee Bills & above	Total (1+2+3)	Held by	Held by	Currency In tills of Scheduled Banks	Currency In Circulation (4-5-6-7)	
	Subsidiary	Coins and above			Banking Department	Issue Department			
	1	2	3	4	5	6	7	8	
2003	Jun.	662	4,004	522,891	527,558	214	2,351	30,415	494,577
	Dec.	662	4,405	595,285	600,352	126	2,435	30,273	567,517
2004	Jun.	664	4,941	611,904	617,508	161	2,799	36,432	578,116
	Dec.	667	5,574	691,072	697,313	126	3,068	38,836	655,283
2005	Jun.	667	6,093	705,720	712,480	146	2,961	43,472	665,901
	Dec.	667	6,618	769,617	776,902	157	2,470	42,527	731,749
2006	Jun.	667	6,931	784,236	791,834	139	2,865	48,439	740,391
	Dec.	667	6,933	917,809	925,408	141	2,640	48,367	874,260
2007	Jun.	667	7,441	893,293	901,401	136	3,012	58,072	840,181
	Dec.	667	7,461	1,070,960	1,079,088	156	2,730	68,371	1,007,831
2007	Jan.	667	6,949	880,469	888,084	157	2,616	47,973	837,338
	Feb.	667	7,366	879,550	887,583	205	2,946	47,276	837,156
	Mar.	667	7,359	879,275	887,301	198	2,963	49,615	834,524
	Apr.	667	7,342	882,947	890,957	199	2,937	48,218	839,602
	May.	667	7,329	903,257	911,253	168	2,916	49,860	858,309
	Jun.	667	7,441	893,293	901,401	136	3,012	58,072	840,181
	Jul.	667	7,496	895,504	903,667	190	2,978	53,416	847,083
	Aug.	667	7,398	894,002	902,067	160	2,945	53,178	845,784
	Sep.	667	7,499	927,990	936,156	193	2,867	58,176	874,919
	Oct.	667	7,469	969,842	977,978	163	2,820	57,405	917,590
	Nov.	667	7,501	992,576	1,000,744	195	2,786	55,132	942,631
	Dec.	667	7,461	1,070,960	1,079,088	156	2,730	68,371	1,007,831
2008	Jan.	667	7,432	1,040,269	1,048,368	126	2,709	56,288	989,245

Note The quarter end data relate to last working day whereas monthly data are of last Saturday of the month

Source: Monetary. Policy Department SBP

Totals may not tally due to separate rounding off.

2.15 Government Budgetary Borrowing from Banks

(Million Rupees)

Item	Stocks		Monetary Impact During	
	30-Jun-07	30-Jun-06	Ist July 07 to 23 Feb. 2008	Ist July 07 to 24 Feb. 2007
1. Central Government (a+b)	1,014,152	875,718	289,227	71,634
a. Scheduled Banks	617,528	422,156	-20,775	57,181
T-Bills and Securities	830,347	589,552	11,753	67,451
Less:				
Government Deposits	212,819	167,396	32,528	10,270
b. State Bank	396,624	453,563	310,001	14,452
T-bills and Securities etc.	461,619	517,507	280,825	-6,441
Debtor Balances (Excluding Zakat Fund)	0	0	0	0
Less:				
Government Deposits (Excluding Zakat and Privatization Fund)	78,430	76,865	-29,185	-20,524
Others	-13,435	-12,921	8	-369
2. Provincial Governments (c+d)	-204,099	-167,681	7,200	139
c. Scheduled Banks	152,466	117,684	15,388	11,281
Government and Others	1,100	1,101	0	-1
Less:				
Government Deposits	153,566	118,785	15,388	11,280
d. State Bank	-51,633	-49,997	22,588	11,420
Government Securities	0	0	0	0
Debtor Balances (Excluding Zakat Fund)	10,821	16,404	6,459	-1,663
Less:				
Government Deposits (Excluding Zakat Fund)	62,454	66,401	-16,129	-13,083
Net Budgetary Borrowing from the Banking System	810,053	708,037	296,427	71,773

Source: Monetary Policy
Department, SBP

2.16 Government Borrowing for Commodity Operations

(Million Rupees)

Commodity	Stocks		Monetary Impact During	
	30-Jun-07	30-Jun-06	Ist July 07 to 23 rd Feb.08	Ist July 07 to 24 th Feb.07
Rice	2,224	3,461	-2,215	-1,195
Wheat	62,049	73,127	-22,179	-37,657
Sugar	25,285	18,082	564	9,288
Fertilizer	6,227	6,544	778	-239
Seeds	95	252	-95	-252
Oilseeds	0	0	0	0
Pulses	106	10	41	0
Edible Oil	1,266	1,842	-1,266	-577
Black Mash	57	0	-57	228
Chillies	0	0	0	0
S. Meal	27	82	-27	-55
Gram	0	34	3,372	12
Onion	50	151	-50	-101
Potatoes	0	0	0	0
Cotton	1,166	4,175	41	-3,047
Total	98,552	107,761	-21,093	-33,594

Source: Monetary Policy Department, SBP