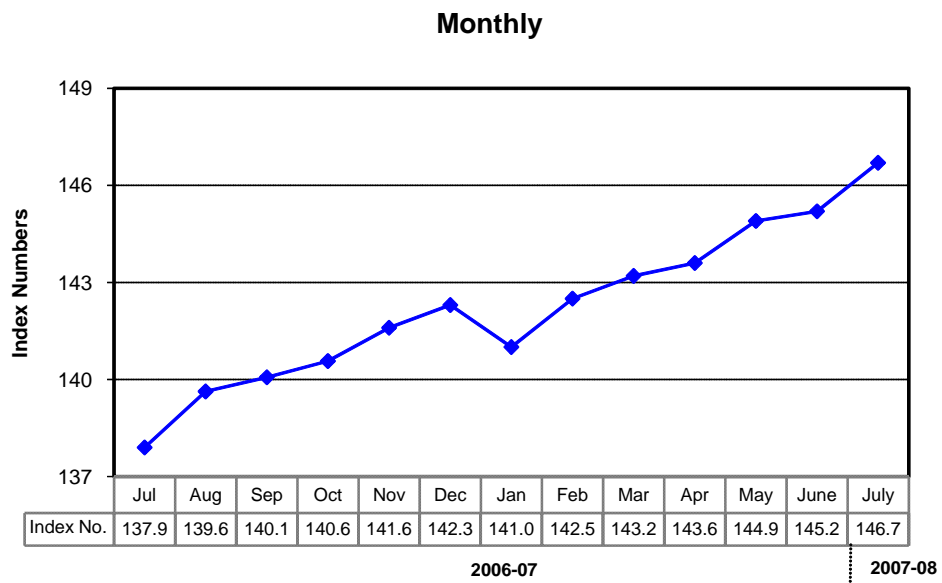
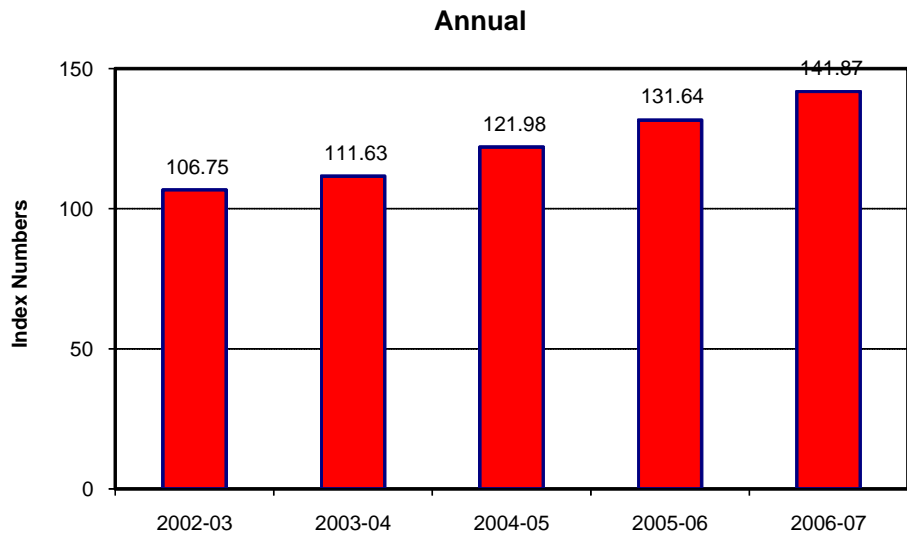


**8.1 Combined Consumer Price Index Numbers
by Commodity Groups - All Urban
(2000-01=100)**

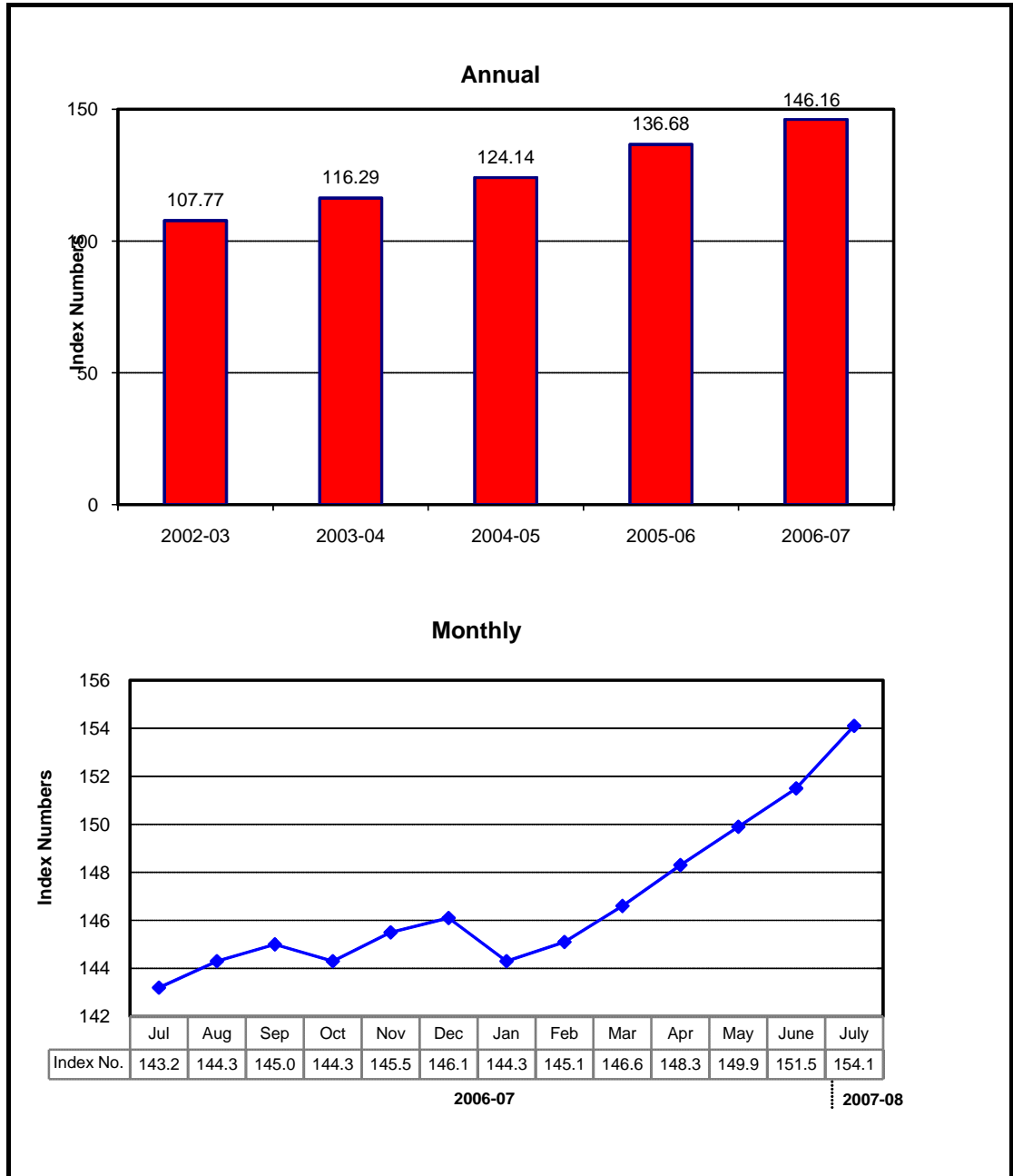
Year / Month	General	Food	Apparel	House	Fuel	Household	Transportation	Recreation	Education	Cleaning	Medicare	
		Beverages and Tobacco	Textile and Footwear		and Lighting	Furniture and Equipment	and Communi cation	Entertain- ment & Education		Laundry and Personal Appearance		
2002-03	106.75	105.40	106.78	103.54	117.81	106.90	111.60	107.21	109.92	107.37	105.59	
2003-04	111.63	111.74	109.69	102.20	121.30	110.68	115.43	106.08	114.19	111.29	106.99	
2004-05	121.98	125.69	112.98	120.42	125.77	117.34	125.11	105.93	117.55	115.90	107.94	
2005-06	131.64	134.39	117.58	132.36	137.09	123.41	145.90	105.65	125.03	119.49	110.66	
2006-07	141.87	148.21	123.70	141.21	149.43	131.64	148.96	105.76	133.82	124.53	120.91	
2006	Jul.	137.91	142.51	120.16	137.36	147.39	128.11	150.87	105.80	129.69	122.52	113.37
	Aug.	139.63	145.70	120.44	138.12	148.50	128.58	151.08	105.82	130.14	122.85	117.75
	Sep.	140.07	145.90	120.55	138.90	148.74	129.41	151.38	105.84	131.84	122.77	120.17
	Oct.	140.57	146.67	121.02	139.53	148.12	129.86	151.44	105.86	133.20	122.56	120.26
	Nov.	141.59	148.69	121.32	140.14	147.26	130.59	151.60	105.87	133.47	123.54	120.26
	Dec.	142.26	149.59	121.99	140.67	148.21	131.00	151.72	105.85	133.53	124.29	120.92
2007	Jan.	141.01	146.27	122.46	141.24	149.05	132.31	148.63	105.79	133.70	124.75	121.54
	Feb.	142.47	148.35	125.09	142.10	151.13	132.97	148.74	105.56	134.97	125.19	121.72
	Mar.	143.17	149.67	127.10	142.89	151.34	133.62	145.45	105.52	135.15	125.66	123.39
	Apr.	143.62	150.10	127.72	143.50	151.33	134.12	145.52	105.50	136.46	126.23	123.39
	May	144.94	152.77	127.95	144.28	151.05	134.33	145.53	105.81	136.62	126.79	124.00
	Jun.	145.23	152.31	128.61	145.82	151.06	134.76	145.60	105.85	137.11	127.42	124.18
	Jul.	146.70	154.58	129.06	146.85	151.16	135.99	146.24	105.79	137.76	128.60	129.23

Source : Federal Bureau of Statistics

Index Numbers of Consumer Prices (2000 - 01=100)



Index Numbers of Wholesale Prices (2000- 01=100)



8.2 Index Numbers of Wholesale Prices by Commodity Groups (2000-01=100)

Year/ Month	General	Food	Raw Materials	Fuel,Lighting and Lubricants	Manufactures	Building Materials
2002-03	107.77	105.62	115.51	115.95	103.67	102.90
2003-04	116.29	112.99	135.12	116.23	111.83	126.46
2004-05	124.14	125.03	110.44	138.01	113.05	143.79
2005-06	136.68	133.78	121.93	174.57	116.35	144.18
2006-07	146.16	145.67	138.85	184.12	119.92	151.90
2006 Jul.	143.22	139.90	132.20	185.41	119.64	148.50
Aug.	144.33	142.43	132.15	185.82	119.81	147.99
Sep.	144.97	143.16	136.50	185.54	119.90	147.04
Oct.	144.26	143.41	128.25	185.88	119.03	147.19
Nov.	145.54	145.02	135.10	186.12	118.76	148.78
Dec.	146.08	145.31	140.15	186.09	118.76	149.28
2007 Jan.	144.31	144.40	141.75	177.91	118.96	149.91
Feb.	145.07	145.76	142.40	176.60	119.05	157.13
Mar.	146.55	146.79	142.96	180.02	120.49	156.57
Apr.	148.25	147.77	144.83	184.93	121.14	157.01
May	149.87	150.86	145.86	185.87	121.39	156.74
Jun.	151.52	153.17	144.05	189.25	122.06	156.68
Jul.	154.10	155.72	148.27	193.82	122.57	159.92

Source : Federal Bureau of Statistics

8.3 Combined Sensitive Price Indicator (SPI)

by Income Groups
(2000-01 =100)

Year/ Month		INCOME GROUP				Combined
		Group-I	Group-II	Group-III	Group-IV	
		Up to Rs.3000	Rs.3001 to Rs.5000	Rs.5001 to Rs.12000	Above Rs.12000	
2001-02		103.36	103.74	103.60	104.06	103.60
2002-03		107.06	107.77	107.66	108.49	107.53
2003-04		114.38	114.88	114.32	114.58	113.93
2004-05		127.59	127.50	127.01	127.35	126.52
2005-06		136.56	136.15	135.99	139.80	136.43
2006	Jan.	135.51	135.35	135.41	139.87	135.82
	Feb.	137.49	137.10	136.79	140.61	136.71
	Mar.	138.65	138.07	137.59	141.11	137.54
	Apr.	140.50	139.72	139.19	142.54	139.21
	May	141.42	140.44	139.92	143.76	140.06
	Jun.	142.76	141.98	141.91	146.18	142.25
	Jul.	144.70	144.24	144.52	148.85	144.62
	Aug.	147.85	147.34	147.55	151.34	147.28
	Sep.	148.46	147.68	147.65	151.19	147.23
	Oct.	149.29	148.41	148.31	151.71	147.90
	Nov.	152.79	151.68	151.11	153.41	150.42
	Dec.	153.95	152.87	152.25	154.27	151.45
2007	Jan.	151.92	150.65	149.91	151.79	149.78

Note: SPI figures revised as it is computed on 53 items instead of 51 items.

Source : Federal Bureau of Statistics

8.4 Bullion Prices

(Rupees per 10 grams)

Year / Month	GOLD TEZABI		SILVER TEZABI		
	Karachi	Lahore	Karachi	Lahore	
	2002-03	6,378	6,398	90	94
2003-04	7,328	7,337	92	111	
2004-05	8,216	8,238	118	138	
2005-06	10,317	10,307	180	176	
2006-07	12,619	12,603	228	231	
2006	Jul.	12,614	12,681	208	215
	Aug.	12,517	12,374	208	213
	Sep.	11,879	11,836	196	203
	Oct.	11,700	11,753	204	208
	Nov.	12,448	12,446	222	229
	Dec.	12,516	12,540	237	238
	2007	Jan.	12,443	12,458	238
Feb.		12,972	12,970	242	243
Mar.		12,956	12,945	241	243
Apr.		13,253	13,254	246	248
May		13,136	13,124	245	245
Jun.		12,988	12,859	246	247
Jul.		13,054	12,946	246	244

Figures are monthly / yearly averages

Source: Daily Business Recorder