

6.1 Government of Pakistan Treasury Bills

(Million Rupees)

PERIOD	3 months Government of Pakistan Treasury Bills					6 months Government of Pakistan Treasury Bills		
	Discount		Discharged	Discount	Outstanding	Discount		Discharged
	Issue	Allowed		Paid		Issue	Allowed	
2003 Jun.	-	-	17,222.3	77.7	498.1	1,487.7	12.4	12,970.3
Dec.	-	-	5,183.2	16.8	10,365.2	297.6	2.4	24,976.9
2004 Jun.	-	-	20,926.6	73.4	30,356.2	-	-	297.6
Dec.	15,113.8	136.2	17,332.4	117.6	61,089.6	-	-	-
2005 Jun.	74,533.5	1,237.8	76,332.8	867.2	254,698.5	59,097.9	273.1	-
Dec.	2,734.1	50.9	8,280.6	154.4	14,615.3	1,728.9	71.1	59,097.9
2006 Jun.	1,800.8	34.2	12,109.3	225.7	2,095.3	623.8	26.2	1,728.9
Dec.	793.6	15.8	27,846.2	553.8	20,995.0	5,124.8	225.2	623.8
2007 Jun.	-	-	5,147.5	102.5	3,001.7	299.7	13.3	5,124.8
2006 Jul.	47,494.9	908.9	98.2	3.7	49,492.0	6,559.5	277.5	2,669.6
Aug.	21,128.4	421.6	1,702.7	32.3	68,917.6	7,184.3	315.7	968.0
Sep.	27,846.2	553.8	43,668.2	835.6	53,095.6	5,149.4	226.3	3,384.7
Oct.	5,588.9	111.2	10,053.5	196.5	48,631.0	8,637.1	379.6	96.0
Nov.	14,612.6	287.5	15,196.0	304.1	48,047.6	10,633.7	466.4	192.0
Dec.	793.6	15.8	27,846.2	553.8	20,995.0	5,124.8	225.2	623.8
2007 Jan.	7,402.8	147.2	5,588.9	111.2	22,808.9	5,795.3	254.7	6,559.5
Feb.	686.4	13.7	14,612.6	287.5	8,882.7	12,629.8	555.1	2,777.9
Mr.	5,353.0	106.6	5,009.8	99.6	9,225.9	4,288.2	188.7	9,555.7
Apr.	2,009.8	40.2	3,284.7	65.3	7,951.1	22,073.5	976.5	8,637.1
May	991.9	19.8	793.7	15.8	8,149.2	166.4	7.4	10,633.7
Jun.	-	-	5,147.5	102.5	3,001.7	299.7	13.3	5,124.8
Jul.	1,960.8	39.2	2,009.8	40.2	2,952.7	670.3	29.8	5,795.3

Note: Six months Government of Pakistan Treasury Bills restarted w. e. f. June 1998 and 3 & 12 months Government of Pakistan Treasury Bills restarted w.e.f July 1998.

6.1 Government of Pakistan Treasury Bills

(Million Rupees)

PERIOD	6 months Government of Pakistan Treasury Bills		12 months Government of Pakistan Treasury Bills (Auctioned and Rollover)					
	Discount Paid	Outstanding Balance	Issue	Discount Allowed	Discharged	Discount Paid	Outstanding Balance	
2003	Jun.	279.7	148,617.6	25,403.2	596.8	1,682.6	117.4	253,908.5
	Dec.	223.1	78,346.6	392.3	7.7	18,829.1	820.9	297,695.1
2004	Jun.	2.4	78,909.1	-	-	25,403.2	596.8	236,420.9
	Dec.	-	118,457.3	-	-	196.1	3.9	91,601.7
2005	Jun.	-	132,708.3	48,360.1	1,229.2	-	-	65,798.8
	Dec.	2,335.8	59,159.9	82,036.8	7,174.7	-	-	329,870.2
2006	Jun.	71.1	7,934.1	28,686.2	2,513.8	48,360.1	4,039.9	422,647.0
	Dec.	26.2	43,288.7	47,687.7	4,282.3	82,150.5	7,184.7	344,177.0
2006	Jun.	225.2	45,252.8	49,979.6	4,550.4	28,686.2	2,513.8	607,844.1
2006	Jul.	75.3	11,824.1	37,889.9	3,321.1	62,892.7	5,332.3	397,644.2
	Aug.	40.0	18,040.3	490.9	44.1	45,035.0	3,915.0	353,100.1
	Sep.	139.9	19,805.0	4,782.8	429.5	8,596.7	753.6	349,286.2
	Oct.	3.9	28,346.1	22,781.3	2,045.7	14,069.5	1,230.5	357,997.9
	Nov.	8.0	38,787.7	80,318.0	7,205.0	59,676.1	5,218.9	378,639.8
	Dec.	26.2	43,288.7	47,687.7	4,282.3	82,150.5	7,184.7	344,177.0
2007	Jan.	277.5	42,524.4	57,285.5	5,144.2	39,647.9	3,468.4	361,814.6
	Feb.	122.1	52,376.3	10,640.5	9,554.9	13,561.8	1,188.3	454,658.0
	Mar.	420.0	47,108.8	98,597.3	8,857.6	53,022.2	4,646.4	500,233.1
	Apr.	379.6	60,545.1	75,813.9	6,856.1	13,929.3	1,220.7	562,117.7
	May	466.4	50,077.9	25,812.1	2,340.9	1,379.1	120.9	586,550.7
	Jun.	225.2	45,252.8	49,979.6	4,550.4	28,686.2	2,513.8	607,844.1
	Jul.	254.7	40,127.7	106,673.7	9,744.0	37,889.9	3,321.1	676,627.9

Source: Financial Markets Strategy & Conduct Department, SBP

6.2 Sale / Purchase of Treasury Bills under Open Market Operation by SBP with Banks

SALE

(Billion Rupees)

PERIOD	2003-04		2004-05		2005-06		2006-07		2007-08	
	Bid Amount		Bid Amount		Bid Amount		Bid Amount		Bid Amount	
	Offered	Accepted	Offered	Accepted	Offered	Offered	Accepted	Accepted	Accepted	Accepted
July	72.1	41.5	74.3	71.5	56.5	46.8	159.3	133.5	191.8	141.8
August	19.5	8.0	66.9	57.9	86.0	65.2	131.9	105.7		
September	101.8	76.0	13.2	4.0	83.9	69.7	107.0	87.0		
October	29.9	13.0	61.8	52.6	14.0	9.0	92.9	81.3		
November	-	-	59.9	42.4	32.0	26.5	71.5	61.9		
December	32.5	29.5	103.2	95.2	159.2	95.9	124.7	117.2		
January	62.7	54.5	15.4	6.5	82.5	67.1	69.6	60.2		
February	26.6	22.0	60.8	56.6	80.5	64.7	23.9	11.7		
March	26.9	16.6	83.7	60.8	44.5	41.1	50.2	42.1		
April	27.3	24.0	90.9	49.6	-	-	119.0	88.8		
May	16.0	4.9	73.1	49.2	6.6	4.0	27.0	11.4		
June	145.2	120.9	95.5	64.9	235.4	153.8	161.8	135.3		
Average										
per month	46.7	34.2	66.5	50.9	73.4	53.6	94.9	78.0	16.0	11.8
per day	1.6	1.1	2.2	1.7	2.5	1.8	3.2	2.6	0.5	0.4

PURCHASE

PERIOD	Amount		Amount		Amount		Amount		Amount	
	Offered	Injected	Offered	Injected	Offered	Injected	Offered	Injected	Offered	Injected
	July	-	-	-	-	-	-	-	-	-
August	-	-	-	-	11.2	8.3	27.2	21.2		
September	-	-	-	-	-	-	-	-		
October	7.8	3.5	16.1	14.0	66.9	38.5	-	-		
November	85.9	56.7	-	-	123.6	74.1	-	-		
December	29.3	16.5	-	-	-	-	31.3	25.8		
January	-	-	40.3	21.3	139.6	111.5	-	-		
February	-	-	-	-	60.6	42.8	-	-		
March	-	-	-	-	12.7	10.7	51.1	25.0		
April	-	-	-	-	210.5	96.9	-	-		
May	-	-	20.0	9.0	91.4	46.7	-	-		
June	-	-	-	-	-	-	-	-		
Average										
per month	10.2	6.4	6.4	3.7	59.7	35.8	9.1	6.0	-	-
per day	0.3	0.2	0.2	0.1	2.0	1.2	0.3	0.2	-	-

Source: Financial Markets Strategy & Conduct Department, SBP

6.3 SBP 3-Day Repo Facility MTBs / FIBs / PIBs (Outstanding)

Cash Accommodation

(Million Rupees)

PERIOD	2002-03	2003-04	2004-05	2005-06	2006-07	2007-08
July	94,168	-	700	23,861	38,883	111,817
August	9,490	-	10,600	48,241	19,032	
September	87,535	-	84,760	45,245	66,715	
October	214,984	10,440	63,324	116,512	27,670	
November	103,241	400	14,098	91,780	77,702	
December	29,775	-	-	4,520	35,573	
January	140,540	1,350	115,134	29,760	7,718	
February	2,500	8,340	-	12,032	34,435	
March	-	-	21,695	47,815	75,895	
April	6,625	24,745	800	243,238	51,327	
May	-	1,245	70,787	55,246	174,980	
June	-	-	139,550	44,019	76,830	
Average						
per month	57,405	3,877	43,454	63,522	57,230	9,318
per day	1,913	129	1,448	2,117	1,908	311

SBP 3-Day Repo Rates

(Percent per annum)

July	9.00	7.50	7.50	9.00	9.50	9.50
August	9.00	7.50	7.50	9.00	9.50	
September	9.00	7.50	7.50	9.00	9.50	
October	9.00	7.50	7.50	9.00	9.50	
November	7.50	7.50	7.50	9.00	9.50	
December	7.50	7.50	7.50	9.00	9.50	
January	7.50	7.50	7.50	9.00	9.50	
February	7.50	7.50	7.50	9.00	9.50	
March	7.50	7.50	7.50	9.00	9.50	
April	7.50	7.50	9.00	9.00	9.50	
May	7.50	7.50	9.00	9.00	9.50	
June	7.50	7.50	9.00	9.00	9.50	

Note: Rates applicable against T-bills & FIBs, PIBs

Source: Financial Markets Strategy & Conduct Department, SBP

6.4 Auction of Government of Pakistan Market Treasury Bills (Auction Wise)

(Million Rupees)

AUCTION SETTLEMENT DATE	3 Months Treasury Bills			6 Months Treasury Bills		
	Amount Offered	Amount Accepted	Cutt-off Yield (%)	Weighted Average (%)	Amount Offered	Amount Accepted
2006-07						
06-07-06	52,000	44,100	8.3256	8.3148	13,200	5,700
20-07-06	4,300	4,200	8.3256	8.3256	420	220
03-08-06	13,450	6,050	8.6417	8.6115	2,800	250
17-08-06	16,000	9,000	8.6294	8.6294	3,700	2,650
31-08-06	10,050	6,500	8.6417	8.6417	7,750	4,600
14-09-06	25,050	17,300	8.6417	8.6417	5,600	1,500
28-09-06	12,650	11,100	8.6417	8.6417	5,900	3,850
12-10-06	9,500	5,500	8.6417	8.6417	2,500	1,000
27-10-06	2,750	200	8.6417	8.6417	8,550	8,000
10-11-06	15,200	13,000	8.6544	8.6368	5,800	4,800
23-11-06	2,250	1,900	8.6417	8.6417	7,650	6,300
07-12-06	952	402	8.6417	8.6417	4,950	4,050
21-12-06	600	300	8.6417	8.6417	1,300	1,300
04-01-07	4,350	4,300	8.6417	8.6417	5,850	5,800
18-01-07	3,300	3,250	8.6417	8.6417	2,500	250
01-02-07	150	100	8.6417	8.6417	9,600	9,550
15-02-07	650	600	8.6417	8.6417	2,700	2,650
01-03-07	2,150	100	8.6417	8.6417	2,450	400
15-03-07	-	-	-	-	-	-
29-03-07	7,250	5,250	8.6869	8.6503	6,100	4,050
12-04-07	2,000	2,000	8.6869	8.6869	19,500	19,500
26-04-07	150	50	8.6869	8.6869	6,150	3,550
10-05-07	1,200	400	8.6869	8.6869	100	100
24-05-07	500	500	8.6869	8.6869	100	50
07-06-07	-	-	-	-	313	313
21-06-07	-	-	-	-	-	-
2007-08						
05-07-07	2,000	2,000	8.6869	8.6869	500	500
19-07-07	-	-	-	-	200	200

6.4 Auction of Government of Pakistan Market Treasury Bills (Auction Wise)

(Million Rupees)

AUCTION SETTLEMENT DATE	6 Months Treasury Bills		12 Months Treasury Bills			
	Cutt-off Yield (%)	Weighted Average (%)	Amount Offered	Amount Accepted	Cutt-off Yield (%)	Weighted Average (%)
2006-07						
06-07-06	8.4869	8.4850	31,175	29,875	8.7907	8.7903
20-07-06	8.4869	8.4869	11,336	11,336	8.7907	8.7865
03-08-06	8.8142	8.8098	9,100	100	9.0046	9.0046
17-08-06	8.8142	8.8142	7,200	100	9.0046	9.0046
31-08-06	8.8142	8.8142	3,335	335	9.0046	9.0046
14-09-06	8.8142	8.8142	5,262	1,512	9.0046	9.0046
28-09-06	8.8142	8.8142	8,200	3,700	9.0046	9.0046
12-10-06	8.8142	8.8142	14,327	9,827	9.0046	9.0046
27-10-06	8.8142	8.8142	15,300	15,000	9.0046	9.0046
10-11-06	8.8190	8.8190	31,400	30,000	9.0055	9.0020
23-11-06	8.8142	8.8142	61,523	57,523	9.0046	9.0046
07-12-06	8.8142	8.8142	36,720	35,720	9.0046	9.0046
21-12-06	8.8142	8.8142	17,050	16,250	9.0046	9.0046
04-01-07	8.8142	8.8142	27,700	26,700	9.0046	9.0046
18-01-07	8.8142	8.8142	42,095	35,595	9.0046	9.0043
01-02-07	8.8142	8.8142	73,600	66,600	9.0046	9.0043
15-02-07	8.8142	8.8142	49,360	49,360	9.0046	9.0045
01-03-07	8.8142	8.8142	42,360	40,360	9.0046	9.0046
15-32-07	-	-	27,050	27,050	9.0165	9.0031
29-03-07	8.8579	8.8250	47,590	39,490	9.0523	9.0156
12-04-07	8.9017	8.8669	47,600	34,300	9.0761	9.0538
26-04-07	8.9017	8.9017	58,670	48,370	9.0880	9.0784
10-05-07	8.9017	8.9017	27,753	20,753	9.1000	9.0910
24-05-07	8.9017	8.9017	15,500	7,400	9.1119	9.1021
07-06-07	8.9017	8.9017	46,530	46,530	9.1597	9.1234
21-06-07	-	-	24,900	8,000	9.1597	9.1597
2007-08						
05-07-07	8.9017	8.9017	81,918	58,918	9.1597	9.1597
19-07-07	8.9017	8.9017	64,890	57,490	9.1597	9.1593

Source: Financial Markets Strategy & Conduct Department, SBP

6.5 Auction of Pakistan Investment Bonds (PIBs)

(Million Rupees)

AUCTION SETTLEMENT		Coupon Rate (%)	Amount Offered	Amount Accepted	Price		Weighted Average Yield Accepted (%)
DATE	Tenure				Accepted = Rs.100	Cut-off Yield Accepted (%)	
2006-07							
22-12-06	3-Years	9.10	9,350.00	1,473.60	98.64	9.7393	9.7165
	5-Years	9.30	2,700.00	694.20	97.53	10.0017	10.0017
	10-Years	9.60	5,998.00	2,885.10	94.53	10.5270	10.5072
	15-Years	10.00	4,000.00	4,000.00	92.05	11.1005	11.0578
	20-Years	10.50	5,000.00	4,000.00	92.80	11.4203	11.3924
	30-Years	11.00	8,000.00	8,000.00	94.21	11.7006	11.6802
28-02-07	3-Years	9.10	11,825.00	3,085.30	99.45	9.3690	9.3529
	5-Years	9.30	14,325.00	4,095.50	98.40	9.7652	9.7516
	10-Years	9.60	19,675.00	9,560.80	96.45	10.1988	10.1536
	15-Years	10.00	2,200.00	400.00	92.90	10.9815	10.9538
	20-Years	10.50	4,000.00	REJECTED	REJECTED	REJECTED	REJECTED
	30-Years	11.00	4,000.00	REJECTED	REJECTED	REJECTED	REJECTED
23-04-07	3-Years	9.10	6,350.00	1,752.00	99.56	9.3315	9.3310
	5-Years	9.30	10,100.00	1,479.50	98.93	9.6197	9.6189
	10-Years	9.60	20,500.00	7,181.00	96.87	10.1332	10.1296
	15-Years	10.00	1,650.00	975.00	92.96	10.9800	10.9707
	20-Years	10.50	4,000.00	1,525.00	94.49	11.1999	11.1769
	30-Years	11.00	6,500.00	4,500.00	95.05	11.5906	11.5459
06-06-07	3-Years	9.10	3,169.00	1,069.00	99.61	9.3180	9.3113
	5-Years	9.30	8,462.00	2,512.00	99.19	9.5480	9.5282
	10-Years	9.60	11,600.00	6,850.00	96.95	10.1244	10.1059
	15-Years	10.00	1,125.00	875.00	92.93	10.9857	10.9612
	20-Years	10.50	3,025.00	1,725.00	94.47	11.2016	11.1831
	30-Years	11.00	4,800.00	3,600.00	95.05	11.5937	11.5736

Source: Financial Markets Strategy & Conduct Department, SBP

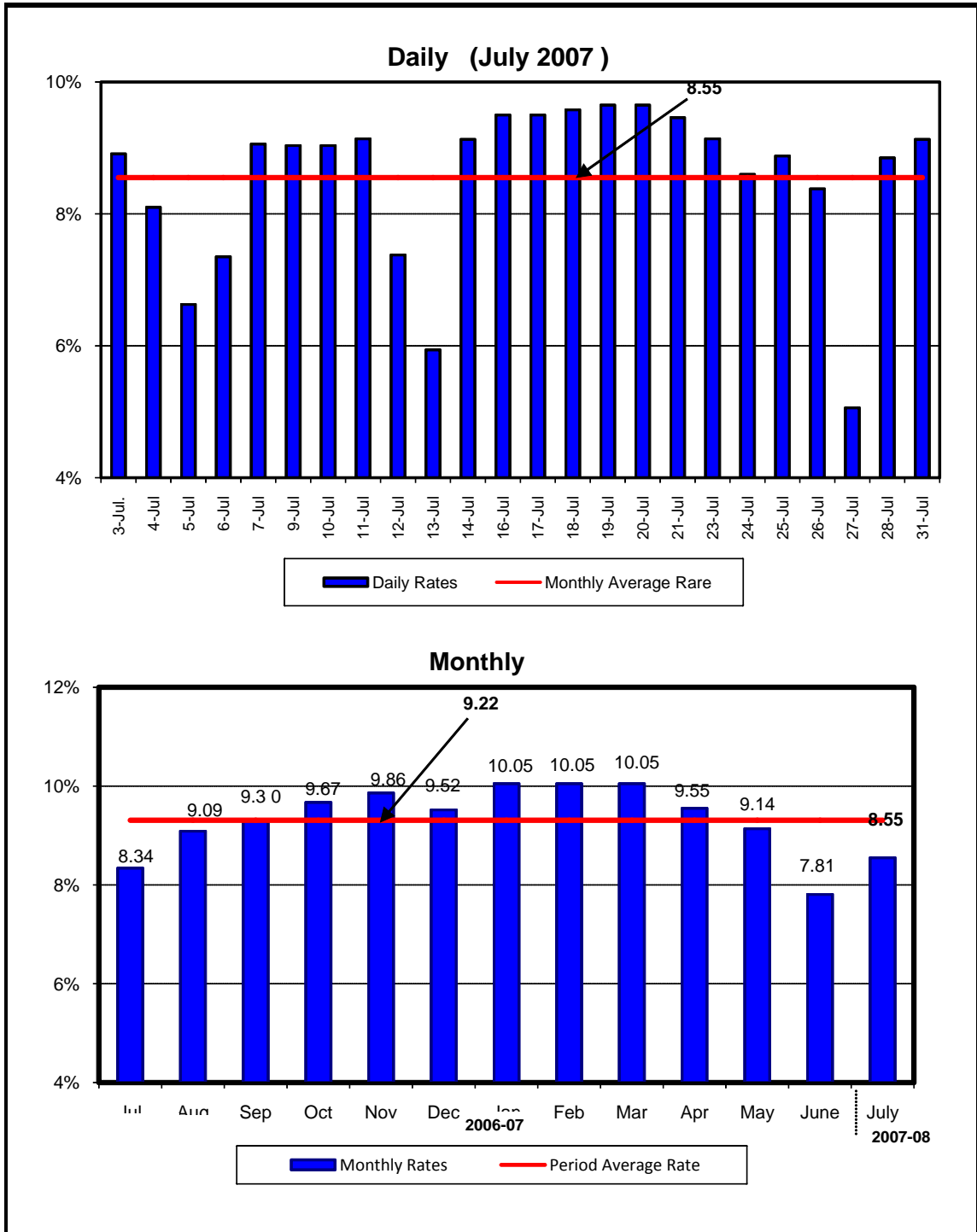
6.6 Monthly KIBOR

			(Percent per annum)													
Period	1 Week		2 Week		1Month		3 Month		6 Month		9 Month		12 Month			
	Bid	Offer	Bid	Offer	Bid	Offer	Bid	Offer	Bid	Offer	Bid	Offer	Bid	Offer		
2006	Jul.	Month Average	8.09	9.09	8.45	8.95	8.66	9.16	9.04	9.54	9.41	9.91	9.63	10.13	9.84	10.34
		End-Month	9.10	10.10	9.39	9.89	9.57	10.07	9.87	10.37	10.15	10.65	10.34	10.84	10.55	11.05
	Aug.	Month Average	8.58	9.58	8.86	9.36	9.12	9.62	9.58	10.08	9.92	10.42	10.15	10.65	10.36	10.86
		End-Month	8.64	9.64	8.84	9.34	9.12	9.62	9.53	10.03	9.87	10.37	10.13	10.63	10.37	10.87
	Sep.	Month Average	8.47	9.47	8.74	9.24	8.99	9.49	9.51	10.01	9.87	10.37	10.11	10.61	10.32	10.82
		End-Month	8.44	9.44	8.70	9.20	8.99	9.49	9.56	10.06	9.90	10.40	10.13	10.63	10.32	10.82
	Oct.	Month Average	8.63	9.63	8.88	9.38	9.14	9.64	9.76	10.26	10.01	10.51	10.21	10.71	10.37	10.87
		End-Month	8.75	9.75	8.95	9.45	9.25	9.75	9.82	10.32	10.08	10.58	10.27	10.77	10.41	10.91
	Nov.	Month Average	8.74	9.74	8.89	9.39	9.14	9.64	9.80	10.30	10.06	10.56	10.25	10.75	10.41	10.91
		End-Month	8.79	9.79	8.86	9.36	9.13	9.63	9.79	10.29	10.07	10.57	10.24	10.74	10.41	10.91
	Dec.	Month Average	8.55	9.55	8.91	9.41	9.28	9.77	9.83	10.33	10.11	10.61	10.27	10.77	10.45	10.95
		End-Month	9.15	10.15	9.25	9.75	9.48	9.98	9.92	10.42	10.15	10.65	10.32	10.82	10.50	11.00
2007	Jan.	Month Average	8.71	9.71	9.04	9.54	9.37	9.87	9.83	10.33	10.05	10.55	10.27	10.77	10.45	10.95
		End-Month	8.43	9.43	8.75	9.25	9.17	9.67	9.76	10.26	10.03	10.53	10.26	10.76	10.44	10.94
	Feb.	Month Average	8.78	9.78	8.95	9.45	9.21	9.71	9.76	10.26	9.99	10.49	10.21	10.71	10.42	10.92
		End-Month	8.96	9.96	9.03	9.53	9.18	9.68	9.73	10.23	9.98	10.48	10.18	10.68	10.39	10.89
	Mar.	Month Average	8.84	9.84	8.97	9.47	9.18	9.68	9.68	10.17	9.93	10.43	10.16	10.66	10.35	10.85
		End-Month	8.54	9.54	8.81	9.31	9.06	9.56	9.63	10.03	9.89	10.39	10.10	10.60	10.29	10.79
	Apr.	Month Average	8.48	9.48	8.75	9.25	8.93	9.44	9.37	9.91	9.75	10.25	9.95	10.45	10.13	10.63
		End-Month	8.78	9.78	8.89	9.39	8.94	9.44	9.39	9.89	9.73	10.23	9.89	10.39	10.05	10.55
	May.	Month Average	8.82	9.82	8.90	9.40	8.95	9.45	9.32	9.82	9.67	10.17	9.87	10.37	10.00	10.50
		End-Month	8.32	9.32	8.54	9.04	8.77	9.27	9.24	9.74	9.60	10.10	9.84	10.34	9.97	10.47
	Jun.	Month Average	8.38	9.38	8.66	9.16	8.84	9.34	9.12	9.62	9.53	10.03	9.80	10.30	9.95	10.45
		End-Month	8.87	9.87	8.83	9.33	8.92	9.42	9.09	9.59	9.52	10.02	9.76	10.26	9.93	10.43
	Jul.	Month Average	8.45	9.45	8.66	9.16	8.79	9.29	9.03	9.53	9.47	9.97	9.70	10.20	9.86	10.36
		End-Month	8.53	9.53	8.69	9.19	8.81	9.31	9.06	9.56	9.46	9.96	9.68	10.18	9.83	10.33

KIBOR :Karachi Interbank Offered Rate

Source: Domestic Markets & Monetary Management Department, SBP

Call Money Rate



6.7 Call Money Rate

(Percent per annum)

MONTH	2002-03	2003-04	2004-05	2005-06	2006-07	2007-08
July	5.59	0.74	1.90	8.52	8.34	8.55
August	5.32	1.40	3.03	7.78	9.09	
September	7.30	1.01	5.51	8.09	9.30	
October	7.96	2.34	3.40	9.23	9.67	
November	4.90	2.67	4.04	8.98	9.86	
December	4.61	2.43	2.79	8.01	9.52	
January	4.12	1.72	6.53	8.38	10.05	
February	2.36	2.57	2.67	9.07	10.05	
March	1.14	0.99	5.02	8.38	10.05	
April	2.71	3.38	3.95	9.05	9.55	
May	3.83	1.65	6.37	8.62	9.14	
June	0.92	1.46	6.85	7.39	7.81	
Average of the period	4.23	1.86	4.34	8.46	9.37	

Source: Daily Business Recorder

6.8 SBP Rates for Market to Market (M 2 M) of Major Currencies

MONTH	US Dollar			Euro			Japanese Yen			Pound Sterling		
	Ready	1Week	1Month	Ready	1Week	1Month	Ready	1Week	1Month	Ready	1Week	1 Month
03-Jul-07	60.3900	60.4368	60.5955	82.1576	82.2400	82.5246	0.4932	0.4940	0.4968	121.7402	121.8239	122.1290
04-Jul-07	60.3840	60.4323	60.5905	82.2490	82.3336	82.6178	0.4931	0.4940	0.4967	121.8760	121.9628	122.2674
05-Jul-07	60.4100	60.4463	60.5985	82.4476	82.5158	82.7923	0.4933	0.4941	0.4968	121.7896	121.8520	122.1442
06-Jul-07	60.3680	60.4123	60.5640	82.0733	82.1523	82.4272	0.4898	0.4906	0.4933	121.3246	121.4022	121.6931
07-Jul-07	60.3765	60.4203	60.5740	82.2811	82.3603	82.6367	0.4893	0.4901	0.4929	121.4443	121.5211	121.7896
09-Jul-07	60.3905	60.4345	60.5845	82.3062	82.3849	82.6581	0.4897	0.4905	0.4932	121.6838	121.7610	122.0493
10-Jul-07	60.4005	60.4483	60.5975	82.5041	82.5881	82.8623	0.4908	0.4916	0.4943	121.8187	121.9038	122.1906
11-Jul-07	60.4055	60.4500	60.6138	83.0576	83.1375	83.4312	0.4968	0.4976	0.5005	122.7017	122.7807	123.0994
12-Jul-07	60.3840	60.4235	60.5780	83.2514	83.3255	83.6065	0.4944	0.4952	0.4980	122.7667	122.8361	123.1105
13-Jul-07	60.3740	60.4150	60.5690	83.2316	83.3077	83.5880	0.4936	0.4944	0.4972	122.6709	122.7432	123.0165
14-Jul-07	60.3725	60.4150	60.5720	83.2175	83.2956	83.5801	0.4950	0.4958	0.4988	122.8067	122.8821	123.1626
16-Jul-07	60.3990	60.4479	60.6080	83.3506	83.4368	83.7266	0.4962	0.4970	0.4999	123.1203	123.2091	123.5209
17-Jul-07	60.3765	60.4255	60.5885	83.1686	83.2549	83.5481	0.4954	0.4963	0.4991	123.4367	123.5259	123.8447
18-Jul-07	60.4065	60.4559	60.6265	83.2764	83.3632	83.6672	0.4947	0.4955	0.4984	123.8031	123.8932	124.2285
19-Jul-07	60.4470	60.5003	60.6750	83.5196	83.6120	83.9223	0.4954	0.4963	0.4992	123.9103	124.0086	124.3522
20-Jul-07	60.3940	60.4490	60.6225	83.2894	83.3840	83.6919	0.4939	0.4948	0.4977	123.9798	124.0817	124.4234
21-Jul-07	60.4030	60.4555	60.6265	83.5283	83.6203	83.9245	0.4981	0.4990	0.5019	124.1251	124.2221	124.5326
23-Jul-07	60.3840	60.4292	60.5930	83.4235	83.5056	83.8051	0.4980	0.4988	0.5017	124.2039	124.2859	124.5769
24-Jul-07	60.3940	60.4358	60.5965	83.4554	83.5328	83.8281	0.5003	0.5012	0.5040	124.5626	124.6383	124.9235
25-Jul-07	60.4330	60.4755	60.6430	83.0349	83.1130	83.4164	0.5027	0.5035	0.5065	123.9995	124.0759	124.3735
26-Jul-07	60.3923	60.4315	60.5893	82.8551	82.9287	83.2122	0.5014	0.5022	0.5051	123.6743	123.7435	124.0254
27-Jul-07	60.4070	60.4418	60.5955	82.5099	82.5772	82.8542	0.5070	0.5077	0.5106	122.8467	122.9069	123.1778
28-Jul-07	60.4255	60.4645	60.6193	82.3781	82.4516	82.7288	0.5097	0.5106	0.5135	122.3586	122.4273	122.6992
30-Jul-07	60.4190	60.4603	60.6140	82.6200	82.6965	82.9814	0.5093	0.5102	0.5131	122.4180	122.4912	122.7567
31-Jul-07	60.3960	60.4416	60.5935	82.7848	82.8675	83.1485	0.5069	0.5077	0.5107	122.7217	122.8034	123.0685

6.8 SBP Rates for Market to Market (M 2 M) of Major Currencies

MONTH	Swiss Frank			Australian Dollar			Saudi Arabian Riyal			Kuwaiti Dinnar		
	Ready	1Week	1 Month	Ready	1Week	1 Month	Ready	1Week	1 Month	Ready	1Week	1 Month
03-Jul-07	49.6424	49.7075	49.9321	51.7029	51.7342	51.8355	16.1016	16.1152	16.1616	209.6293	209.8646	210.6351
04-Jul-07	49.6559	49.7217	49.9419	51.7823	51.8150	51.9173	16.1005	16.1144	16.1607	209.5866	209.8271	210.5957
05-Jul-07	49.8412	49.8977	50.1135	51.8831	51.9057	52.0041	16.1063	16.1171	16.1618	209.6841	209.8830	210.6309
06-Jul-07	49.4921	49.5548	49.7691	51.7173	51.7465	51.8441	16.0951	16.1080	16.1526	209.5165	209.7431	210.4890
07-Jul-07	49.5682	49.6305	49.8465	51.8151	51.8439	51.9443	16.0974	16.1101	16.1552	209.5679	209.7705	210.4945
09-Jul-07	49.6592	49.7218	49.9420	51.9932	52.0219	52.1155	16.1011	16.1139	16.1580	209.6019	209.8274	210.5676
10-Jul-07	49.8251	49.8912	50.1076	51.9535	51.9852	52.0796	16.1038	16.1176	16.1615	209.6512	209.8899	210.6274
11-Jul-07	50.1853	50.2496	50.4760	52.0273	52.0562	52.1648	16.1051	16.1181	16.1658	209.6613	209.8885	210.6767
12-Jul-07	50.2258	50.2861	50.5046	52.1114	52.1364	52.2370	16.1000	16.1116	16.1569	210.3752	210.5862	211.2719
13-Jul-07	50.2008	50.2624	50.4806	52.4318	52.4583	52.5591	16.0974	16.1094	16.1545	210.3844	210.6006	211.2848
14-Jul-07	50.1933	50.2564	50.4771	52.6177	52.6455	52.7488	16.0970	16.1094	16.1553	210.3791	210.6006	211.2363
16-Jul-07	50.3199	50.3878	50.6202	52.8401	52.8737	52.9775	16.1034	16.1175	16.1643	210.4788	210.7227	211.5020
17-Jul-07	50.2991	50.3678	50.5994	52.7540	52.7877	52.8951	16.0974	16.1115	16.1591	210.4224	210.6666	211.4560
18-Jul-07	50.2759	50.3449	50.5778	52.8889	52.9226	53.0383	16.1054	16.1196	16.1692	210.5416	210.7873	211.6034
19-Jul-07	50.3620	50.4333	50.6711	53.1601	53.1972	53.3166	16.1162	16.1315	16.1822	210.6828	210.9421	211.7727
20-Jul-07	50.0883	50.1608	50.3961	53.1377	53.1763	53.2947	16.1036	16.1193	16.1697	210.5054	210.7706	211.5969
21-Jul-07	50.2918	50.3628	50.5967	53.1395	53.1761	53.2919	16.1060	16.1210	16.1707	210.5294	210.7308	211.4300
23-Jul-07	50.1528	50.2211	50.4524	53.3553	53.3859	53.4927	16.1013	16.1145	16.1622	210.4706	210.7015	211.4939
24-Jul-07	50.1174	50.1792	50.4072	53.4517	53.4794	53.5845	16.1021	16.1143	16.1612	210.4907	210.7099	211.4913
25-Jul-07	49.8437	49.9058	50.1342	53.4681	53.4963	53.6058	16.1125	16.1249	16.1736	214.1875	214.4141	215.2369
26-Jul-07	49.8101	49.8696	50.0891	53.4653	53.4891	53.5901	16.1025	16.1140	16.1601	213.8536	214.0682	214.8555
27-Jul-07	49.8696	49.9257	50.1434	52.0074	52.0284	52.1220	16.1064	16.1167	16.1618	213.9058	214.1049	214.8777
28-Jul-07	49.9942	50.0538	50.2737	51.4372	51.4616	51.5552	16.1135	16.1250	16.1708	214.0092	214.1352	214.6538
30-Jul-07	50.2173	50.2791	50.5072	51.5223	51.5489	51.6359	16.1096	16.1217	16.1668	213.9104	214.1325	214.9052
31-Jul-07	50.1087	50.1738	50.3956	51.9557	51.9859	52.0734	16.1026	16.1161	16.1613	214.1474	214.2559	214.7525

Source: Financial Markets Strategy & Conduct Department, SBP