

4.1 Foreign Exchange Average Rates

Pak Rupees per US dollar

PERIOD	Jul.	Aug.	Sep.	Oct.	Nov.	Dec.	Jan.	Feb.
1986-87	16.7762	16.9146	16.9942	17.0770	17.2578	17.2578	17.2578	17.2578
1987-88	17.4916	17.6009	17.5638	17.5954	17.5490	17.4937	17.5091	17.5779
1988-89	18.1202	18.2606	18.3619	18.4711	18.7285	18.7301	18.9862	19.3274
1989-90	21.1068	21.1027	21.1101	21.1693	21.3565	21.4385	21.4736	21.4736
1990-91	21.7944	21.8083	21.7944	21.8440	21.9107	21.9099	22.1296	22.2054
1991-92	24.6281	24.7185	24.7154	24.6804	24.7668	24.7914	24.7548	24.7175
1992-93	25.1929	25.1854	25.1427	25.2044	25.5080	25.6933	25.9752	26.2669
1993-94	28.3871	29.9247	29.9247	30.0903	30.1252	30.1616	30.2910	30.4633
1994-95	30.6694	30.6694	30.7267	30.7267	30.7434	30.8319	30.9188	30.9695
1995-96	31.2033	31.3563	31.5186	32.1071	34.3357	34.3357	34.3433	34.4353
1996-97	35.2821	35.5752	36.6113	38.1608	40.2203	40.2203	40.2203	40.2203
1997-98	40.6013	40.6213	40.6213	42.6216	44.1602	44.1602	44.1602	44.1602
1998-99	46.2633	46.1150	46.1150	46.1150	46.1150	46.1150	46.1150	46.1150
1998-99 [@]	46.2633	49.9277	50.0995	50.3784	50.7970	50.0558	49.8663	50.1240
1999-00	51.6067	51.6408	51.7284	51.7534	51.7653	51.7647	51.7702	51.7962
2000-01	52.5075	53.9820	56.1063	58.1591	57.0032	57.9913	59.0639	59.6205
2001-02	64.0905	64.1157	64.1472	62.2097	61.1255	60.5836	60.2011	60.1611
2002-03	59.7907	59.5102	59.2578	59.0530	58.5852	58.4162	58.1829	58.0811
2003-04	57.7432	57.7877	57.8093	57.5609	57.3342	57.3960	57.3993	57.3601
2004-05	58.2777	58.7934	58.9725	60.0311	59.9393	59.5478	59.4452	59.3525
2005-06	59.6234	59.6547	59.7593	59.7108	59.7647	59.8076	59.8396	59.8855
2006-07	60.2711	60.3180	60.5037	60.5959	60.7282	60.8878	60.8780	

@ Composite Rate (two-tier rate structure on foreign exchange was introduced w.e.f. 22nd July, 1998 and subsequently replaced by market based unified exchange rate w.e.f. 19th May, 1999)

4.1 Foreign Exchange Average Rates

Pak Rupees per US dollar

PERIOD	Mar.	Apr.	May	Jun.	Jul. – Sep.	Oct. -Dec.	Jan. - Mar.	Apr. - Jun.	Annual
1986-87	17.3116	17.3149	17.3433	17.3915	16.8950	17.1975	17.2757	17.3499	17.1795
1987-88	17.6093	17.6440	17.6771	17.8806	17.5521	17.5460	17.5654	17.7339	17.5994
1988-89	19.5327	19.9718	20.9414	21.1528	18.2475	18.6432	19.2821	20.6886	19.2154
1989-90	21.4815	21.7476	21.9582	21.9257	21.1065	21.3214	21.4762	21.8772	21.4453
1990-91	22.5604	23.2502	23.7422	24.1241	21.7990	21.8882	22.2985	23.7055	22.4228
1991-92	24.9234	25.0865	25.1570	25.1891	24.6873	24.7462	24.7986	25.1442	24.8441
1992-93	26.5855	26.7467	26.8686	27.1477	25.1737	25.4686	26.2759	26.9210	25.9598
1993-94	30.5736	30.6164	30.6835	30.7247	29.4121	30.1257	30.4426	30.6749	30.1638
1994-95	30.9572	30.9505	30.9936	31.0517	30.6885	30.7673	30.9485	30.9986	30.8507
1995-96	34.5719	34.7071	34.8496	35.0570	31.3594	33.5928	34.4502	34.8712	33.5684
1996-97	40.2203	40.2564	40.4418	40.4945	35.8229	39.5338	40.2203	40.3976	38.9936
1997-98	44.1974	44.2911	44.1609	44.5940	40.6146	43.6473	44.1726	44.3487	43.1958
1998-99	46.1150	46.1150	48.4848	51.7017	46.1644	46.1150	46.1150	48.7672	46.7904
1998-99 [®]	49.9386	50.4115	51.0911	51.7017	48.7635	50.4104	49.9763	51.0681	50.0546
1999-00	51.7912	51.7911	51.7975	52.0452	51.6586	51.7611	51.7859	51.8779	51.7709
2000-01	60.5224	61.0673	61.8291	63.4010	54.1986	57.7179	59.7356	62.0992	58.4378
2001-02	60.1020	60.1232	60.1253	60.1246	64.1178	61.3063	60.1547	60.1244	61.4258
2002-03	57.8675	57.7757	57.7311	57.7429	59.5196	58.6848	58.0438	57.7499	58.4995
2003-04	57.4495	57.4616	57.6753	57.9165	57.7801	57.4304	57.4030	57.6845	57.5745
2004-05	59.3529	59.4031	59.5081	59.6673	58.6812	59.8394	59.3835	59.5262	59.3576
2005-06	60.0070	59.9979	60.0668	60.1618	59.6791	59.7610	59.9107	60.0755	59.8566
2006-07					60.3643	60.7373			

4.2 Daily Foreign Exchange Rates

Pak Rupees per Currency Unit January, 2007

CURRENCY/PERIOD	4	5	6	8	9	10	11	12	13	15	16	17
Australian dollar	48.1509	47.6891	47.5019	47.5537	47.7502	47.5668	47.7099	47.5462	47.7720	47.8737	47.7474	47.7564
Bahrain dinnar	161.5186	161.5971	161.6442	161.6902	161.7342	161.7260	161.7605	161.7047	161.6393	161.6758	161.7039	161.6399
Canadian dollar	51.9477	51.7661	51.9673	51.9595	51.9526	51.8173	51.9086	51.8075	52.0711	52.1204	52.1753	51.8366
Chinese yuan	7.7838	7.7937	7.7945	7.8039	7.7988	7.8006	7.8118	7.8050	7.8064	7.8125	7.8186	7.8247
Denmark krone	10.7585	10.6922	10.6252	10.6360	10.6776	10.6097	10.6016	10.5523	10.5679	10.5816	10.5819	10.5722
Hongkong dollar	7.8157	7.8210	7.8203	7.8243	7.8229	7.8171	7.8205	7.8131	7.8164	7.8176	7.8171	7.8133
Japanese yen	0.5105	0.5151	0.5144	0.5154	0.5132	0.5120	0.5101	0.5062	0.5071	0.5073	0.5066	0.5051
Kuwaiti dinnar	210.4543	210.7330	210.7404	210.9705	210.8501	210.8869	210.8719	210.7424	210.7530	210.8225	210.8695	210.7487
Malaysian ringgit	17.3007	17.3231	17.3403	17.3240	17.3770	17.3352	17.3405	17.3146	17.3309	17.3758	17.3902	17.3941
Newzealand dollar	42.8882	42.1074	41.7424	41.9009	42.2120	42.1547	42.0382	42.0908	42.1017	42.3303	42.4318	42.2051
Norwegian krone	9.7122	9.6145	9.5793	9.5854	9.6363	9.5818	9.4766	9.4093	9.4728	9.4670	9.4743	9.4675
Oman riyal	157.9413	158.0322	158.0710	158.1240	158.1757	158.1490	158.1619	158.1619	158.0706	158.1219	158.1619	158.1369
Qatar riyal	16.6919	16.7150	16.7173	16.7430	16.7269	16.7300	16.7297	16.7213	16.7217	16.7259	16.7313	16.7255
Saudi Arabian riyal	16.2293	16.2407	16.2477	16.2569	16.2518	16.2532	16.2536	16.2449	16.2443	16.2468	16.2547	16.2449
Singapore dollar	39.7169	39.6595	39.6434	39.6342	39.7082	39.6779	39.6050	39.4222	39.5165	39.5219	39.6079	39.6133
Swedish krone	8.8840	8.7848	8.7539	8.7551	8.7385	8.6691	8.6568	8.6036	8.6479	8.6836	8.6887	8.7154
Swiss franc	49.6665	49.4570	49.3396	49.3372	49.3132	49.0664	49.0137	48.8289	48.8386	48.8995	48.8666	48.8352
UAE dirham	16.5767	16.5909	16.5930	16.6071	16.6018	16.6027	16.6031	16.5930	16.5936	16.5961	16.6018	16.5943
UK pound	118.8973	118.0415	117.6602	117.6307	118.4718	118.0856	117.9229	118.5783	119.3015	119.5103	119.7735	119.5469
US dollar	60.8940	60.9316	60.9539	60.9792	60.9769	60.9778	60.9812	60.9530	60.9442	60.9520	60.9759	60.9502
EMU Euro	80.2100	79.6312	79.2829	79.2662	79.5316	79.0916	79.0325	78.6344	78.7230	78.8465	78.8908	78.7838

Note:- The Exchange Rates are Mid Points of T.T. Buying and Selling.

4.2 Daily Foreign Exchange Rates

Pak Rupees per Currency Unit January, 2007

CURRENCY/PERIOD	18	19	20	22	23	24	25	26	27	31
Australian dollar	47.9997	47.9963	47.9711	47.9768	47.9435	47.6043	47.3847	47.0550	46.9927	46.9245
Bahrain dinnar	161.5397	161.4164	161.2119	161.1826	161.1635	161.1458	161.1795	161.1613	161.0964	161.0552
Canadian dollar	51.9017	51.7654	51.8179	51.7914	51.4451	51.4513	51.5862	51.3614	51.4526	51.4645
Chinese yuan	7.8232	7.8189	7.8044	7.7976	7.8133	7.8077	7.8137	7.8036	7.7905	7.8083
Denmark krone	10.5966	10.6038	10.5644	10.5780	10.5539	10.6234	10.5716	10.5386	10.5321	10.5621
Hongkong dollar	7.7973	7.7893	7.7797	7.7791	7.7896	7.7871	7.7861	7.7812	7.7713	7.7805
Japanese yen	0.5047	0.5020	0.5017	0.5014	0.5001	0.5003	0.5049	0.5009	0.5002	0.5004
Kuwaiti dinnar	210.4788	210.4427	210.1046	210.0339	210.3154	210.1184	210.1683	210.1640	209.8992	210.0823
Malaysian ringgit	17.3764	17.3696	17.3566	17.3274	17.3500	17.3512	17.3581	17.3315	17.3303	17.3492
Newzealand dollar	42.2867	42.2317	42.2303	42.2902	42.5771	42.5873	42.5747	42.5309	42.2664	41.9022
Norwegian krone	9.4693	9.4269	9.3990	9.4227	9.4037	9.5058	9.5764	9.5595	9.5577	9.6608
Oman riyal	158.0331	157.8775	157.6690	157.6431	157.6431	157.6431	157.6431	157.6431	157.5663	157.5150
Qatar riyal	16.7111	16.7020	16.6752	16.6623	16.6878	16.6773	16.6772	16.6787	16.6507	16.6773
Saudiarabian riyal	16.2278	16.2182	16.1967	16.1931	16.2014	16.1968	16.1978	16.1984	16.1835	16.1913
Singapore dollar	39.6245	39.6051	39.5282	39.5479	39.4629	39.6004	39.6148	39.4914	39.4983	39.5399
Swedish krone	8.7074	8.6550	8.6357	8.6611	8.6335	8.7223	8.6773	8.6551	8.6395	8.7112
Swiss franc	48.9396	48.8590	48.6973	48.7157	48.6168	48.8927	48.7340	48.6523	48.4595	48.5197
UAE dirham	16.5754	16.5626	16.5409	16.5416	16.5469	16.5452	16.5473	16.5437	16.5298	16.5379
UK pound	120.1316	120.1109	119.9174	120.0054	120.2270	120.4381	119.5416	119.4413	119.0895	119.2301
US dollar	60.8773	60.8473	60.7781	60.7725	60.7672	60.7694	60.7870	60.7847	60.7269	60.7347
EMU Euro	78.9563	79.0773	78.7384	78.8455	78.6513	79.1890	78.7822	78.5689	78.4948	78.7259

4.3 Monthly Average Exchange Rate of Major Currencies Pak Rupees per Currency Unit

Currency / Period	2001-02	2002-03	2003-04	2004-05	2005-06	2006		
						Jan.	Feb.	Mar.
Australian dollar	32.1607	34.2101	41.0626	44.7141	44.7564	44.8910	44.4355	43.7193
Bahrain dinnar	163.0461	155.1204	152.7749	157.4908	158.8078	158.7852	158.8908	159.2466
Canadian dollar	39.1719	38.8234	42.8526	47.5567	51.4986	51.7141	52.0939	51.9552
Chinese yuan	7.4149	7.0601	6.9497	7.1676	7.4161	7.4183	7.4372	7.4661
Danish krone	7.3987	8.2524	9.2250	10.1527	9.7699	9.7284	9.5900	9.6749
Hongkong dollar	7.8720	7.4990	7.3970	7.6177	7.7127	7.7170	7.7173	7.7331
Japanese yen	0.4884	0.4888	0.5203	0.5558	0.5216	0.5182	0.5086	0.5122
Kuwaiti dinar	200.7861	194.5677	194.3681	202.3816	205.3258	204.9804	205.1311	205.5651
Malaysian ringgit	16.1621	15.3944	15.1532	15.6244	16.0515	15.9531	16.0741	16.2002
New Zealand dollar	26.4673	30.5008	36.1210	41.3340	40.0222	41.0779	40.3383	38.1773
Norwegian krone	7.0288	8.1021	8.2191	9.1841	9.2141	9.0203	8.8722	9.0343
Oman riyal	159.5664	151.8092	149.4898	154.1047	155.3535	155.3386	155.4473	155.7888
Qatar riyal	16.8754	16.0650	15.8115	16.3031	16.4395	16.4379	16.4528	16.4832
Saudi Arabian riyal	16.3792	15.5961	15.3488	15.8027	15.9608	15.9565	15.9721	16.0018
Singapore dollar	33.9503	33.3406	33.5098	35.6797	36.4149	36.6630	36.7661	37.0048
Swedish krone	5.9117	6.6910	7.5195	8.2949	7.7867	7.8058	7.6678	7.6911
Swiss franc	37.1824	41.4643	44.2489	49.0657	46.8551	46.8498	45.9126	46.0129
UAE dirham	16.7231	15.9261	15.6727	16.1586	16.2972	16.2922	16.3046	16.3389
UK pound sterling	88.5691	92.7433	100.1672	110.2891	106.4344	105.7332	104.7678	104.7167
US dollar	61.4258	58.4995	57.5745	59.3576	59.8566	59.8396	59.8855	60.0070
EMU Euro	54.9991	61.3083	68.6226	75.5359	72.8661	72.5589	71.5855	72.1512

Note : The Exchange rates are mid points of T.T. buying and selling.

4.3 Monthly Average Exchange Rate of Major Currencies Pak Rupees per Currency Unit

Currency / Period	2006									2007
	Apr.	May.	Jun.	Jul.	Aug.	Sep.	Oct.	Nov.	Dec.	Jan.
Australian dollar	44.1279	45.8725	44.5785	45.3406	46.0106	45.7767	45.6040	46.8936	47.8664	47.6576
Bahrain dinnar	159.1613	159.3453	159.6029	159.8759	160.0021	160.4964	160.7249	161.0781	161.5030	161.4630
Canadian dollar	52.3606	54.0983	54.0491	53.4558	53.8655	54.2481	53.7236	53.4687	52.8297	51.7894
Chinese yuan	7.4840	7.4932	7.5073	7.5386	7.5616	7.6203	7.6616	7.7157	7.7748	7.8062
Danish krone	9.8639	10.2889	10.2244	10.2653	10.3577	10.3330	10.2622	10.4927	10.7813	10.5992
Hongkong dollar	7.7350	7.7463	7.7478	7.7528	7.7555	7.7738	7.7804	7.8018	7.8312	7.8027
Japanese yen	0.5130	0.5380	0.5260	0.5220	0.5212	0.5169	0.5114	0.5185	0.5197	0.5064
Kuwaiti dinnar	205.5311	207.0923	208.1322	208.4729	208.6438	209.2516	209.5607	210.0634	210.6890	210.5114
Malaysian ringgit	16.3793	16.6254	16.4208	16.4287	16.4156	16.4777	16.4707	16.6627	17.1325	17.3476
New Zealand dollar	37.3506	37.8867	37.2923	37.1802	38.1911	39.4800	39.9841	40.5838	42.1740	42.2582
Norwegian krone	9.3673	9.8379	9.7045	9.6346	9.6608	9.3282	9.0993	9.4764	9.8485	9.5209
Oman riyal	155.6225	155.8131	156.0689	156.3512	156.4636	156.9507	157.1559	157.5234	157.9416	157.9175
Qatar riyal	16.4763	16.4944	16.5183	16.5481	16.5594	16.6105	16.6310	16.6668	16.7096	16.7036
Saudi Arabian riyal	15.9972	16.0182	16.0407	16.0704	16.0829	16.1308	16.1570	16.1902	16.2345	16.2261
Singapore dollar	37.4691	38.1005	37.8385	38.0329	38.2316	38.3127	38.3608	39.0153	39.5224	39.5837
Swedish krone	7.8926	8.2311	8.2647	8.3199	8.4054	8.3284	8.2715	8.5989	8.9042	8.6945
Swiss franc	46.7435	49.3164	48.8779	48.8108	48.9739	48.6606	48.1326	49.1561	50.3639	48.9340
UAE dirham	16.3353	16.3555	16.3814	16.4067	16.4223	16.4725	16.4972	16.5361	16.5799	16.5739
UK pound sterling	105.9580	112.2674	111.0204	111.2127	114.0925	114.1059	113.6011	116.0296	119.5147	119.1615
US dollar	59.9979	60.0668	60.1618	60.2711	60.3180	60.5037	60.5959	60.7282	60.8878	60.8780
EMU Euro	73.5755	76.6998	76.2132	76.5258	77.2453	77.0385	76.4956	78.2065	80.3893	78.9979

4.4 Appreciation / Depreciation of Selected Currencies Against US Dollar

(In Percent)

END OF PERIOD	Chinese Yuan	EMU Euro	Indian Rupee	Indonesian Rupiah	Iranian Rial	Japanese Yen	Malaysian Ringgit	
2002	+0.27	+18.89	+0.31	+17.10	-77.95	+10.23	0.00	
2003	-0.36	+20.44	+5.31	+4.99	-4.00	+11.95	0.00	
2004	+0.01	+6.37	+1.18	-12.30	-5.25	+10.58	0.00	
2005	+2.56	-13.17	-3.49	-5.23	-3.59	-12.03	+0.54	
2006	+3.50	+5.10	-5.60	+4.40	-1.50	-4.00	+3.40	
2004	IV	0.00	+9.77	+5.88	-1.65	-0.13	+6.96	0.00
2005	I	0.00	-4.82	-0.39	-1.65	-1.14	-3.33	0.00
	II	0.00	-6.73	+0.55	-2.40	-1.34	-2.76	0.00
	III	+2.28	-0.41	-1.17	-5.79	-0.63	-2.43	+0.82
	IV	+0.27	-1.79	-2.50	+4.79	-0.53	-4.08	-0.27
2006	I	+0.67	+2.61	+1.26	+8.66	+2.36	+0.41	+2.56
	II	+0.27	+5.03	-3.22	-2.62	+0.22	+2.13	+0.30
	III	+1.10	-0.42	+0.26	+0.70	-1.18	-2.42	-0.26
	IV	+1.28	+4.03	+3.91	+2.38	+0.14	-0.97	+4.45
2006	Jan.	+0.12	+2.47	+2.46	+4.74	-0.24	+0.22	0.51
	Feb.	+0.24	-2.00	-0.83	+1.77	-0.21	+1.26	+1.26
	Mar.	+0.31	+1.93	-0.35	+1.92	-0.10	-0.98	+0.75
	Apr.	+0.01	+3.58	-0.83	+3.20	+0.43	+2.71	+1.67
	May	-0.03	+2.64	-3.14	-4.83	-0.64	+1.84	-0.10
	Jun.	+0.29	-1.20	+0.76	-0.86	+0.43	-2.36	-1.25
	Jul.	+0.30	+0.43	-0.93	+2.54	-0.70	+0.13	-1.70
	Aug.	+0.18	+0.66	-0.09	-0.33	-0.01	-2.15	-3.07
	Sep.	+0.63	-1.49	+1.28	-1.46	-0.47	-0.41	-0.35
	Oct	+0.37	+0.28	+2.09	+1.37	+0.14	+0.13	+1.00
	Nov.	+0.45	+3.97	+0.58	-0.60	0.00	+1.07	0.83
	Dec.	+0.45	-0.23	+1.20	+1.61	+0.01	-2.14	+2.57
2007	Jan.	+0.40	-1.64	+0.14	-0.77	-0.15	-2.24	+0.74

4.4 Appreciation / Depreciation of Selected Currencies Against US Dollar

(In Percent)

END OF PERIOD		Pakistani Rupee	UK Pound Sterling	Saudi Arabian Riyal	South Korean Won	Swiss Franc	Turkish Lira
2002		+3.98	+11.13	0.00	+10.89	+20.84	-11.62
2003		+2.67	+10.73	0.00	-0.98	+12.12	+16.99
2004		-0.64	+9.79	0.00	+3.52	+8.32	-4.34
2005		-1.18	-10.85	0.00	+1.50	-13.90	-0.04
2006		-0.60	+2.30	0.00	+6.70	+4.20	-16.20
2004	IV	+0.15	+7.37	0.00	+11.30	+11.30	+11.65
2005	I	0.00	-2.53	0.00	+1.10	-5.32	-0.08
	II	-0.95	-4.73	0.00	-0.01	-6.98	+1.35
	III	-0.04	-1.52	0.00	-1.34	-0.41	0.00
	IV	-0.19	-2.51	0.00	+1.77	-1.83	-1.30
2006	I	-0.17	+0.77	0.00	+4.56	+0.80	+0.04
	II	-0.54	+5.74	0.00	+1.62	5.90	-15.15
	III	-0.49	+1.95	0.00	+1.60	-1.66	+4.99
	IV	-0.59	+4.96	0.00	+1.68	+2.74	+6.92
2006	Jan.	-0.02	+2.87	0.00	+5.08	+2.35	+2.09
	Feb.	-0.16	-1.40	0.00	+0.21	-2.61	+0.67
	Mar.	0.00	-0.66	0.00	-0.71	+0.98	-2.66
	Apr.	-0.19	+4.24	0.00	+3.19	+4.27	+2.35
	May	-0.22	+3.95	0.00	-0.14	+3.45	-16.05
	Jun.	-01.3	-2.42	0.00	-1.38	-1.82	-1.25
	Jul.	-0.15	+1.63	-2.27	+0.76	-0.03	+6.34
	Aug.	+0.16	+2.32	-2.58	-0.68	+0.66	+2.10
	Sep.	-0.49	-1.96	0.00	+1.52	-2.27	-3.30
	Oct	+0.32	+1.52	0.00	+0.11	+0.20	+3.92
	Nov.	-0.56	+3.03	0.00	+1.54	+3.64	+0.49
	Dec.	-0.35	+0.35	0.00	+0.03	-1.07	+2.38
2007	Jan.	+0.25	-0.53	0.00	-1.20	-2.65	+0.21

Source: International Monetary Fund

Note: 1. (+) Indicates appreciation, (-) indicates depreciation

2. Euro, a common currency of the 12 member countries of European Economic and Monetary Union (EMU)
Introduced w.e.f 1st January, 1999.

4.5 Appreciation / Depreciation of Selected Currencies Against SDR

(In Percent)

END OF PERIOD	Chinese Yuan	EMU Euro	Indian Rupee	Indonesian Rupiah	Iranian Rial	Japanese Yen	Malaysian Ringgit	
2002	-7.31	+9.90	- 7.27	+8.24	- 79.62	+1.89	- 7.56	
2003	-8.83	+10.19	- 3.65	- 3.94	- 12.17	+2.42	- 8.51	
2004	-4.45	+1.63	-3.33	-16.21	-9.47	+5.65	-4.46	
2005	+11.44	-5.66	+4.87	+2.97	+4.76	-4.42	+9.25	
2006	+1.90	+3.50	-7.00	2.80	-3.00	-5.40	1.80	
2004	IV	-5.41	+3.83	+0.16	-6.97	-5.54	+1.18	-5.41
2005	I	+2.79	-2.17	+2.39	+1.10	+1.62	-0.63	+2.79
	II	+3.72	-3.25	+4.29	+1.23	+2.33	+0.86	+3.72
	III	+2.78	+0.08	-0.68	-5.33	-0.14	-1.95	+1.31
	IV	+1.69	-0.40	-1.13	+6.27	+0.88	-2.73	+1.14
2006	I	-0.15	+1.78	+0.44	+7.77	+1.52	-0.41	+1.73
	II	-2.34	+2.30	-5.74	-5.16	-2.39	-0.53	-2.31
	III	+1.30	-0.21	+0.46	+0.91	-0.98	-2.22	-0.06
	IV	-0.61	+2.09	+1.98	+0.48	-1.72	-2.81	+2.51
2006	Jan.	-1.00	+1.32	+1.32	+3.57	-1.36	-0.90	-0.61
	Feb.	+0.96	-1.30	-0.12	+2.51	+0.51	+1.99	+1.99
	Mar.	-0.10	+1.52	-0.75	+1.51	-0.50	-1.38	+0.34
	Apr.	-2.05	+1.45	-2.87	+1.08	-1.63	+0.60	-0.42
	May.	-1.57	+1.05	-4.64	-6.30	-2.18	+0.26	-1.64
	Jun.	+1.29	-0.22	+1.77	+0.13	+1.44	-1.38	-0.26
	Jul.	-0.02	+0.12	-1.22	+2.23	-1.00	-0.17	+0.28
	Aug.	-0.13	+0.34	-0.40	-0.64	-0.32	-2.45	-0.81
	Sep.	+1.46	-0.68	+2.12	-0.65	+0.35	+0.41	+0.48
	Oct	+0.13	+0.04	+1.84	+1.12	-0.11	-0.12	+0.75
	Nov.	-1.39	+2.06	-1.27	-2.43	-1.84	-0.78	-1.02
	Dec.	+0.67	-0.01	+1.42	+1.83	+0.23	-1.93	+2.80
2007	Jan.	+1.36	-0.70	+1.09	+0.18	+0.81	-1.31	+1.70

4.5 Appreciation / Depreciation of Selected Currencies Against SDR

(In Percent)

END OF PERIOD	Pakistani Rupee	UK Pound Sterling	Saudi Arabian Riyal	South Korean Won	Swiss Franc	Turkish Lira	US Dollar	
2002	- 3.88	+2.73	-7.56	+ 2.50	+11.70	- 18.30	-7.56	
2003	- 6.06	+1.30	-8.51	- 9.40	+2.58	+ 7.03	-8.51	
2004	-4.91	+4.90	-4.46	-1.09	+3.49	-8.60	-4.46	
2005	+7.38	-3.13	+8.66	+10.29	-6.45	+8.61	+8.66	
2006	-2.50	+0.70	-1.50	+5.00	+2.60	-17.50	-1.50	
2004	IV	-5.27	+1.56	-5.41	+5.28	+5.28	+5.61	-5.41
2005	I	+2.79	+0.19	+2.79	+3.93	-2.68	2.71	+2.79
	II	+2.74	-1.19	+3.72	+3.71	-3.52	+5.12	+3.72
	III	+0.45	-1.03	+0.49	-0.85	+0.08	-0.41	+0.49
	IV	+1.22	-1.14	+1.41	+3.20	-0.45	+1.00	+1.41
2006	I	-0.98	-0.05	-0.82	+3.71	-0.02	-0.78	-0.82
	II	-3.13	+2.98	-2.60	-1.02	+3.15	-17.36	-2.60
	III	-0.29	+2.16	+0.20	+1.80	-1.46	+5.21	+0.20
	IV	-2.44	+3.01	-1.86	-0.22	+0.82	+4.93	-1.86
2006	Jan.	-1.13	+1.72	-1.12	+3.90	+1.21	+0.95	-1.12
	Feb.	+0.56	-0.69	+0.72	+0.93	-1.91	+1.40	+0.72
	Mar.	-0.41	-1.07	-0.40	-1.11	+0.57	-3.05	-0.40
	Apr.	-2.24	+2.10	-2.05	+1.07	+2.13	+0.25	-2.05
	May.	-1.77	+2.34	-1.55	-1.69	+1.84	-17.35	-1.55
	Jun.	+0.87	-1.44	+1.00	-0.39	-0.83	-0.26	+1.00
	Jul.	-0.46	+1.32	-0.30	+0.45	-0.34	+6.02	-0.30
	Aug.	-0.16	+2.00	-0.31	-0.99	+0.35	+1.78	-0.31
	Sep.	+0.33	-1.15	+0.82	+2.36	-1.47	-2.50	+0.82
	Oct	+0.07	+1.27	-0.25	-0.14	-0.05	+3.67	-0.25
	Nov.	-2.39	+1.14	-1.84	-0.33	-1.74	-1.35	-1.84
	Dec.	-0.12	+0.57	+0.22	+0.25	-0.85	+2.61	+0.22
2007	Jan.	+1.21	+0.42	+0.96	-0.26	-1.72	+1.17	+0.96

Source: International Monetary Fund

Note: 1. (+) Indicates appreciation, (-) indicates depreciation
 2. Euro, a common currency of the 12 member countries of European Economic and Monetary Union (EMU) Introduced w.e.f 1st January, 1999.

4.6 Appreciation / Depreciation of Pak Rupee Against Selected Currencies

(In Percent)

END OF PERIOD	Australiian Dollar	Brazilian Reais	Canadian Dollar	Chinese Yuan	EMU Euro	Hong Kong Dollar	Indian Rupee	Indonesian Rupiah	Japanese Yen	
2002	-6.70	+58.35	+3.13	+3.70	-12.54	+3.99	+3.66	-11.20	-5.67	
2003	-22.49	16.05	-15.99	+3.04	-14.75	+2.22	-2.50	-2.21	-8.28	
2004	-3.58	+7.72	-1.17	-0.48	-6.43	-0.46	-1.63	+13.49	-10.00	
2005	+4.92	-12.86	-4.40	-3.64	+14.10	+0.86	+2.20	+4.18	+12.34	
2006	+1.77	-7.20	-9.89	-4.31	-5.79	-1.26	+4.90	-5.16	+3.13	
2004	IV	-8.12	-7.06	-4.63	+0.15	-8.76	-2.33	-5.42	+1.83	-6.37
2005	I	+0.92	+0.99	+0.50	0.00	+5.07	+2.10	+0.39	+1.67	+3.45
	II	+0.11	-13.00	+0.36	-0.95	+6.19	-0.73	-1.49	+1.48	+1.86
	III	+0.25	-1.17	-5.30	-2.27	+0.38	-0.03	+1.14	+6.10	+2.45
	IV	+3.59	+0.34	+0.09	-0.46	+1.88	-0.45	+2.18	-4.84	+4.06
2006	I	+1.66	-6.48	+0.06	-0.84	-2.71	-0.42	-1.23	-8.04	-0.57
	II	-4.21	+3.14	-4.98	-0.81	-5.30	-0.63	+2.77	+2.14	-2.62
	III	-1.12	-1.71	-0.46	-1.57	-5.86	-0.09	-0.75	-1.19	+1.98
	IV	-6.03	-2.47	+3.87	-1.85	-4.44	-0.04	-4.33	-2.90	+0.38
2006	Jan.	-2.32	-5.54	-1.78	-0.14	-2.67	-0.12	-2.24	-4.46	-0.24
	Feb.	+1.57	-3.57	-0.67	-0.40	+1.88	-0.04	+0.68	-1.89	-1.40
	Mar.	+4.15	-0.41	+1.29	-0.31	-0.60	-0.26	+0.47	-4.28	-0.98
	Apr.	-5.26	-0.84	-4.19	-0.19	-3.64	-0.05	+0.65	-3.29	-2.82
	May.	-1.45	+0.54	-2.10	-0.20	-2.79	-0.16	+3.01	+4.84	-2.02
	Jun.	+2.60	+3.46	+1.31	-0.42	+1.09	-0.16	-0.88	+0.74	+2.28
	Jul.	-3.09	-0.62	+1.27	-0.43	-0.58	+0.13	+0.78	-2.62	-0.28
	Aug.	+0.56	-2.71	-2.00	-0.03	-0.50	-0.07	+0.24	+0.49	+2.35
	Sep.	+1.46	+1.67	+0.29	-1.11	+1.01	-0.16	-1.75	+0.98	-0.09
	Oct	-2.44	-1.23	+0.99	-0.05	+0.04	-0.13	-1.73	-1.04	+0.19
	Nov.	-2.57	+0.95	+1.10	-1.01	-4.36	-0.80	-1.14	0.04	-1.62
	Dec.	-1.14	-2.19	+1.73	-0.79	-0.12	+0.90	-1.52	-1.92	+1.84
2007	Jan.	+2.75	+0.01	+1.44	-0.15	+1.92	+0.12	+0.11	+1.02	+2.55

4.6 Appreciation / Depreciation of Pak Rupee Against Selected Currencies

(In Percent)

END OF PERIOD	Korean Won	Malaysian Ringgit	Saudi Arabian Riyal	Singaporean Dollar	Swedish Krona	Swiss Franc	Taiwan Dollar	Thai Bahat	UK Pound Sterling	U.S Dollar	UAE Dirham	
2002	-6.23	+3.98	+3.98	-2.45	-14.22	-13.95	+3.03	+1.26	-6.43	+3.98	+3.98	
2003	+3.69	+2.67	+2.67	+0.56	-15.36	-8.42	+0.50	-4.95	-7.27	+2.67	+2.67	
2004	-3.86	-0.47	-0.47	-2.76	-6.13	-8.12	-3.22	-3.10	-9.35	-0.64	-0.47	
2005	-2.64	-1.70	-1.18	+0.66	+18.93	+14.77	+2.69	+4.24	+10.84	-1.18	-0.80	
2006	-7.15	-4.21	-0.95	-6.47	-8.08	-4.96	+1.08	-7.73	-3.16	-0.95	-0.95	
2004	IV	-10.02	+0.15	+0.15	-3.23	-10.26	-10.02	-6.96	-6.04	-6.73	+0.15	+0.15
2005	I	-1.09	0.00	0.00	+0.98	+7.12	+5.62	-0.79	+0.56	+2.59	0.00	0.00
	II	-0.94	-0.95	-0.95	+1.05	+9.68	+6.48	+0.04	+4.45	+3.97	-0.95	-0.95
	III	+1.32	-0.85	-0.04	+0.31	-0.52	+0.37	+0.63	-0.74	+1.50	-0.04	-0.04
	IV	-1.92	+0.09	-0.19	-1.66	+1.75	+1.67	+2.82	-0.02	+2.38	-0.19	+0.19
2006	I	-4.52	-2.65	-0.17	-2.93	-2.53	-0.83	-3.45	-5.25	-0.93	-0.17	+0.18
	II	-2.13	-0.84	-0.54	-2.32	-6.83	-6.09	-0.94	-1.59	-5.94	-0.54	-0.54
	III	-2.05	-0.23	-0.49	-0.65	+0.30	+1.19	+1.81	-2.88	-2.39	-0.49	-0.49
	IV	-2.23	-4.83	-0.59	-3.93	-6.57	-3.24	-2.25	-3.45	-5.29	-0.59	-0.59
2006	Jan.	-4.85	-0.54	-0.02	-2.17	-4.28	-2.32	-2.74	-4.87	-2.81	-0.02	-0.52
	Feb.	-0.36	-1.40	-0.16	-0.39	+4.95	+0.56	+1.41	+0.43	+1.26	-0.16	-0.03
	Mar.	-0.22	-2.68	-0.72	-1.34	+1.26	+0.95	-0.02	-1.25	+1.36	0.00	0.00
	Apr.	-3.28	-1.83	-0.19	-2.24	-4.47	-4.28	-1.83	-3.65	-4.25	-0.19	-0.19
	May.	-0.08	-0.13	-0.22	-0.65	-3.22	-3.55	+0.14	+1.57	-4.01	-0.22	-0.22
	Jun.	+1.27	+1.14	-0.13	+0.69	+0.77	+1.72	+0.76	+0.56	+2.35	-0.13	-0.13
	Jul.	-0.90	-0.74	-0.15	-0.89	-0.43	-0.12	+1.25	-1.77	-1.75	-0.15	-0.15
	Aug.	+0.84	+0.66	+0.16	-0.15	-0.43	-0.50	+0.29	-0.60	-2.12	+0.16	+0.16
	Sep.	-1.99	-0.15	-0.49	+0.39	+1.17	+1.82	+0.26	-0.53	+1.50	-0.49	-0.49
	Oct	+0.22	-0.67	+0.32	-1.22	-0.26	+0.12	+0.53	-1.79	-1.18	+0.32	+0.32
	Nov.	-2.07	-1.38	-0.56	-1.73	-5.90	-4.06	-3.35	-1.64	-3.49	-0.56	-0.56
	Dec.	-0.38	-2.84	-0.34	-1.03	-0.45	+0.74	+0.60	-0.04	-0.69	-0.35	-0.34
2007	Jan.	+1.46	-0.49	+0.25	+0.46	+1.73	+2.97	+1.66	-1.53	+0.78	+0.25	+0.25

Source: International Monetary Fund

Note: 1. (+) Indicates appreciation, (-) indicates depreciation

2. Euro, a common currency of the 12 member countries of European Economic and Monetary Union (EMU)
Introduced w.e.f 1st January, 1999.

4.7 Pakistan's Balance of Payments

(Million US Dollars)

I T E M	2004-05			2005-06		
	Credit	Debit	Net Credit	Credit	Debit	Net Credit
I. Current Account	27,006	28,540	-1,534	31,761	36,776	-5,015
A. Goods and services	17,801	25,608	-7,807	20,322	33,218	-12,896
a. Goods	14,482	18,996	-4,514	16,553	25,017	-8,464
1. General merchandise	14,401	18,753	-4,352	16,388	24,647	-8,259
2. Goods for processing	-	-	-	-	-	-
3. Repairs on goods	5	65	-60	1	101	-100
4. Goods procured in ports by carriers	76	178	-102	164	269	-105
5. Nonmonetary gold	-	-	-	-	-	-
b. Services	3,319	6,612	-3,293	3,769	8,201	-4,432
1. Transportation	1,062	2,280	-1,218	1,080	2,865	-1,785
1.1 Passenger	636	404	232	656	453	203
1.2 Freight	112	1,617	-1,505	124	2,085	-1,961
1.3 Other	314	259	55	300	327	-27
2. Travel	177	1,172	-995	216	1,411	-1,195
2.1 Business	6	169	-163	8	57	-49
2.2 Personal	171	1,003	-832	208	1,354	-1,146
3. Communications services	331	59	272	198	101	97
4. Construction services	24	6	18	16	143	-127
5. Insurance services	25	101	-76	29	131	-102
6. Financial services	39	77	-38	70	133	-63
7. Computer and information services	47	27	20	72	44	28
8. Royalties and license fees	13	107	-94	33	99	-66
9. Other business services	285	2,502	-2,217	391	2,953	-2,562
10. Personal, cultural, and recreational services	1	7	-6	1	6	-5
11. Government services, n.i.e.	1,315	274	1,041	1,663	315	1,348
B. Income	437	2,823	-2,386	784	3,451	-2,667
1. Compensation of employees	2	1	1	6	1	5
2. Investment income	435	2,822	-2,387	778	3,450	-2,672
2.1 Direct investment	18	1,640	-1,622	39	2,115	-2,076
2.1.1 Income on equity	18	1,640	-1,622	39	2,115	-2,076
2.1.2 Income on debt (interest)	-	-	-	-	-	-
2.2 Portfolio investment	193	347	-154	357	450	-93
2.2.1 Income on equity (dividends)	7	146	-139	2	88	-86
2.2.2 Income on debt (interest)	186	201	-15	355	362	-7
2.3 Other investment	224	835	-611	382	885	-503
2.3.1 Monetary Authority	155	44	111	268	50	218
2.3.2 General Government	-	636	-636	-	652	-652
2.3.3 Banks	45	31	14	60	50	10
2.3.4 Other investment income	24	124	-100	54	133	-79
C. Current transfers	8,768	109	8,659	10,655	107	10,548
1. General government	266	16	250	715	34	681
2. Other sectors	8,502	93	8,409	9,940	73	9,867
2. Capital and Financial Account	5,890	4,294	1,596	8,511	3,694	4,817
A. Capital account	693	8	685	250	9	241
1. Capital transfers	686	8	678	243	9	234
1.1 General government	657	3	654	201	7	194
1.1.1 Debt forgiveness	495	-	495	-	-	-
1.1.2 Other	162	3	159	201	7	194
1.2 Other sectors	29	5	24	42	2	40
2. Acquisitions/disposal of non-produced nonfinancial assets	7	-	7	7	-	7
B. Financial account	5,197	4,286	911	8,261	3,685	4,576
1. Direct investment	1,525	66	1,459	3,521	71	3,450
1.1 Abroad	-	66	-66	-	71	-71
1.2 In reporting economy	1,525	-	1,525	3,521	-	3,521

4.7 Pakistan's Balance of Payments

(Million US Dollars)

I T E M	2004-05			2005-06		
	Credit	Debit	Net Credit	Credit	Debit	Net Credit
2. Portfolio investment	620	-	620	986	-	986
2.1 Assets	11	-	11	22	-	22
2.2 Liabilities	609	-	609	964	-	964
3. Other investment	2,442	4,220	-1,778	3,742	2,466	1,276
3.1 Assets	-	1,352	-1,352	512	364	148
3.1.1 Trade credits	-	248	-248	-	283	-283
3.1.2 Loans	-	-	-	-	-	-
3.1.2.1. Long-term	-	-	-	-	-	-
3.1.2.2. Short-term	-	-	-	-	-	-
3.1.3 Currency and deposits	-	955	-955	511	-	511
3.1.3.1. Monetary authority	-	-	-	-	-	-
3.1.3.2. General Govt.	-	2	-2	-	-	-
3.1.3.3. Banks.	-	837	-837	461	-	461
3.1.3.4. Other sectors.	-	116	-116	50	-	50
3.1.4 Other assets	-	149	-149	1	81	-80
3.1.4.1. Monetary authority	-	-	-	-	-	-
3.1.4.2. General Govt.	-	-	-	1	-	1
3.1.4.3. Banks.	-	149	-149	0	81	-81
3.1.4.4. Other sectors.	-	-	-	-	-	-
3.2 Liabilities	2,442	2,868	-426	3,230	2,102	1,128
3.2.1 Trade credits	-	-	-	-	-	-
3.2.2 Loans	2,438	2,329	109	2,814	1,909	905
3.2.2.1 Use of Fund credit and loans from the Fund	255	400	-145	-	143	-143
3.2.2.2 General Govt.	2,163	1,558	605	2,263	1,446	817
3.2.2.2.1. Long-term	1,892	1,434	458	2,069	1,059	1,010
3.2.2.2.2. Short-term	271	124	147	194	387	-193
3.2.2.3. Banks.	-	-	-	-	-	-
3.2.2.3.1. Long-term	-	-	-	-	-	-
3.2.2.3.2. Short-term	-	-	-	-	-	-
3.2.2.4. Other sectors	20	371	-351	551	320	231
3.2.2.4.1. Long-term	20	371	-351	551	320	231
3.2.2.4.2. Short-term	-	-	-	-	-	-
3.2.3 Currency and deposits	-	302	-302	317	1	316
3.2.3.1 Monetary authorities	-	8	-8	-	-	-
3.2.3.2 General Govt.	-	10	-10	-	1	-1
3.2.3.3 Banks	-	11	-11	2	-	2
3.2.3.4 Other sector	-	273	-273	315	-	315
3.2.4 Other liabilities	4	237	-233	99	192	-93
3.2.4.1 Monetary authority	3	-	3	-	-	-
3.2.4.1.1. Long-term	-	-	-	-	-	-
3.2.4.1.2. Short-term	3	-	3	-	-	-
3.2.4.2. General Govt.	1	22	-21	-	22	-22
3.2.4.2.1. Long-term	-	22	-22	-	22	-22
3.2.4.2.2. Short-term	1	-	1	-	-	-
3.2.4.3. Banks	-	44	-44	21	25	-4
3.2.4.3.1. Long-term	-	18	-18	21	0	21
3.2.4.3.2. Short-term	-	26	-26	0	25	-25
3.2.4.4. Other sectors	-	171	-171	78	145	-67
3.2.4.4.1. Long-term	-	31	-31	78	-	78
3.2.4.4.2. Short-term	-	140	-140	-	145	-145
4. Official reserve assets	610	-	610	12	1,148	-1,136
4.1 Monetary gold	-	-	-	-	-	-
4.2 SDRs	11	-	11	12	-	12
4.3 Reserve position in the Fund	-	-	-	-	-	-
4.4 Foreign currency reserves (in convertible currencies)	482	-	482	-	791	-791
4.5. Other claims (DMB)	117	-	117	-	357	-357
3. Errors And Omissions	-	7	-7	253	-	253
4. Exceptional Financing	-	55	-55	-	55	-55

4.7 Pakistan's Balance of Payments

I T E M	(Million US Dollars)					
	2005-06		2006-07 ^P		2006-07 ^P	
	Oct.-Dec.		July.-Sep.		Oct.-Dec.	
	Net Credit	Net Credit	Credit	Debit	Net	Credit
I. Current Account	-1,292	-2,642	8,455	10,180	-1,725	
A. Goods and services	-3,145	-4,112	5,443	8,928	-3,485	
a. Goods	-2,044	-2,775	4,310	6,747	-2,437	
1. General merchandise	-2,014	-2,704	4,272	6,664	-2,392	
2. Goods for processing	-	-	-	-	-	
3. Repairs on goods	-28	-26	-	23	-23	
4. Goods procured in ports by carriers	-2	-45	38	60	-22	
5. Non-monetary gold	-	-	-	-	-	
b. Services	-1,101	-1,337	1,133	2,181	-1,048	
1. Transportation	-460	-496	290	803	-513	
1.1 Passenger	42	35	176	148	28	
1.2 Freight	-479	-535	32	552	-520	
1.3 Other	-23	4	82	103	-21	
2. Travel	-376	-275	69	502	-433	
2.1 Business	-9	-11	4	19	-15	
2.2 Personal	-367	-264	65	483	-418	
3. Communications services	26	19	28	23	5	
4. Construction services	-21	4	13	35	-22	
5. Insurance services	-25	-46	6	24	-18	
6. Financial services	-1	-16	17	47	-30	
7. Computer and information services	7	6	25	21	4	
8. Royalties and license fees	-22	-24	12	31	-19	
9. Other business services	-560	-509	128	614	-486	
10. Personal, cultural, and recreational services	-	-	-	-	-	
11. Government services, n.i.e.	331	-	545	81	464	
B. Income	-769	-816	272	1,237	-965	
1. Compensation of employees	1	2	2	-	2	
2. Investment income	-770	-818	270	1,237	-967	
2.1 Direct investment	-558	-632	8	823	-815	
2.1.1 Income on equity	-558	-632	8	823	-815	
2.1.2 Income on debt (interest)	-	-	-	-	-	
2.2 Portfolio investment	-41	-76	100	113	-13	
2.2.1 Income on equity (dividends)	-25	-43	2	64	-62	
2.2.2 Income on debt (interest)	-16	-33	98	49	49	
2.3 Other investment	-171	-110	162	301	-139	
2.3.1. Monetary Authority	47	53	128	11	117	
2.3.2. General Government	-206	-136	-	223	-223	
2.3.3. Banks	4	-6	27	19	8	
2.3.4. Other investment income	-16	-21	7	48	-41	
C. Current transfers	2,622	2,286	2,740	15	2,725	
1. General government	212	60	117	1	116	
2. Other sectors	2,410	2,226	2,623	14	2,609	
2. Capital and Financial Account	1,480	2,253	3,156	1,604	1,552	
A. Capital account	33	89	47	5	42	
1. Capital transfers	31	89	29	5	24	
1.1 General government	21	85	22	5	17	
1.1.1 Debt forgiveness	-	-	-	-	-	
1.1.2 Other	21	85	22	5	17	
1.2 Other sectors	10	4	7	-	7	
2. Acquisitions/disposal of non-produced non-financial assets	2	-	18	-	18	
B. Financial account	1,447	2,164	3,109	1,599	1,510	
1. Direct investment	778	974	851	-	851	
1.1 Abroad	-4	-52	4	-	4	
1.2 In reporting economy	782	1,026	847	-	847	

4.7 Pakistan's Balance of Payments

(Million US Dollars)

I T E M	2005-06	2006-07 ^P	2006-07 ^P		
	Oct.-Dec.	July.-Sep.	Oct.-Dec.		
	Net Credit	Net Credit	Credit	Debit	Net Credit
2. Portfolio investment	193	90	1,218	12	1,206
2.1 Assets	15	4	-	12	-12
2.2 Liabilities	178	86	1,218	-	1,218
3. Other investment	279	421	1,035	879	156
3.1 Assets	48	134	2	280	-278
3.1.1 Trade credits	-68	87	-	124	-124
3.1.2 Loans	-	-	-	-	-
3.1.2.1. Long-term	-	-	-	-	-
3.1.2.2. Short-term	-	-	-	-	-
3.1.3 Currency and deposits	151	98	2	106	-104
3.1.3.1. Monetary authority	-	-	-	-	-
3.1.3.2. General Govt.	1	3	2	-	2
3.1.3.3. Banks	149	54	-	5	-5
3.1.3.4. Other sectors	1	41	-	101	-101
3.1.4 Other assets	-35	-51	-	50	-50
3.1.4.1. Monetary authority	-	-	-	-	-
3.1.4.2. General Govt.	1	-	-	-	-
3.1.4.3. Banks	-36	-51	-	50	-50
3.1.4.4. Other sectors	-	-	-	-	-
3.2 Liabilities	231	287	1,033	599	434
3.2.1 Trade credits	-	-	-	-	-
3.2.2 Loans	2	237	831	505	326
3.2.2.1 Use of Fund credit and loans from the Fund	-42	-10	-	43	-43
3.2.2.2 General Govt.	118	254	561	368	193
3.2.2.2.1. Long-term	228	192	561	248	313
3.2.2.2.2. Short-term	-110	62	-	120	-120
3.2.2.3 Banks	-	-	-	-	-
3.2.2.3.1. Long-term	-	-	-	-	-
3.2.2.3.2. Short-term	-	-	-	-	-
3.2.2.4 Other sectors	-74	-7	270	94	176
3.2.2.4.1. Long-term	-74	-7	270	94	176
3.2.2.4.2. Short-term	-	-	-	-	-
3.2.3 Currency and deposits	171	43	152	1	151
3.2.3.1 Monetary authorities	-1	-	-	1	-1
3.2.3.2 General Govt.	-	-	-	-	-
3.2.3.3 Banks	-1	-9	110	-	110
3.2.3.4 Other sector	173	52	42	-	42
3.2.4 Other liabilities	58	7	50	93	-43
3.2.4.1 Monetary authority	-	-	-	-	-
3.2.4.1.1. Long-term	-	-	-	-	-
3.2.4.1.2. Short-term	-	-	-	-	-
3.2.4.2 General Govt.	-	-22	-	-	-
3.2.4.2.1. Long-term	-	-22	-	-	-
3.2.4.2.2. Short-term	-	-	-	-	-
3.2.4.3 Banks	84	31	50	15	35
3.2.4.3.1. Long-term	2	36	-	15	-15
3.2.4.3.2. Short-term	82	-5	50	-	50
3.2.4.4 Other sectors	-26	-2	-	78	-78
3.2.4.4.1. Long-term	22	83	-	23	-23
3.2.4.4.2. Short-term	-48	-85	-	55	-55
4. Official reserve assets	197	679	5	708	-703
4.1 Monetary gold	-	-	-	-	-
4.2 SDRs	5	-	5	-	5
4.3 Reserve position in the Fund	-	-	-	-	-
4.4 Foreign currency reserves (in convertible currencies)	246	579	-	493	-493
4.5 Other claims (DMB)	-54	100	-	215	-215
3. Errors And Omissions	-133	389	73	-	73
4. Exceptional Financing	-55	-	100	-	100

4.8 Gold and Foreign Exchange Reserves

(Million U.S. Dollars)

PERIOD		Gold	Foreign Exchange		With Banks ²	TOTAL
			With SBP			
			SDRs	Nostro ¹		
2002	Jun.	667	8	4,329	2,062	7,065
	Dec.	667	2	7,652	1,516	9,837
2003	Jun.	725	244	9,285	1,218	11,472
	Dec.	725	246	10,279	1,314	12,564
2004	Jun.	831	238	10,326	1,760	13,155
	Dec.	831	243	8,939	2,959	12,972
2005	Jun.	917	227	9,578	2,616	13,338
	Dec.	917	216	9,010	2,481	12,624
2006	Jun.	1,288	216	10,549	2,537	14,590
	Dec.	1,288	215	10,457	2,616	14,576
2005	Dec.	917	216	9,010	2,481	12,624
2006	Jan.	917	218	8,821	2,383	12,339
	Feb.	917	217	8,984	2,270	12,388
	Mar.	917	217	10,065	2,353	13,552
	Apr.	917	221	10,461	2,692	14,291
	May	917	223	10,401	2,355	13,896
	Jun.	1,288	216	10,549	2,537	14,590
	Jul.	1,288	217	10,236	2,443	14,184
	Aug.	1,288	217	10,097	2,290	13,892
	Sep.	1,288	216	9,971	2,383	13,858
	Oct	1,288	216	10,098	2,413	14,015
	Nov.	1,288	219	9,877	2,372	13,756
	Dec.	1,288	215	10,457	2,616	14,576

1. Excluding FE.13/CRR and Includes Indian Pending Transfers.

2. Including new FCA and Trade Nostro upto Nov. 2002 and excluding Trade Financing w.e.f. Dec. 2002 & over.

4.9 Workers' Remittances

(Million US Dollar)

Country	2001-02	2002-03	2003- 04	2004-05	2005-06	January		July - January	
						2006	2007	2005-06	2006-07
						I. Cash	2,340.79	4,190.73	3,826.16
USA	778.98	1,237.52	1,225.09	1,294.08	1,242.49	109.39	108.74	695.43	768.01
UK	151.93	273.83	333.94	371.86	438.65	34.77	29.19	236.45	247.86
Saudi Arabia	376.34	580.76	565.29	627.19	750.44	49.05	69.21	384.29	552.53
UAE	469.49	837.87	597.48	712.61	716.30	58.06	46.84	359.85	443.87
Dubai	331.47	581.09	447.49	532.93	540.24	41.66	30.98	270.64	333.92
Abu Dhabi	103.72	212.37	114.92	152.51	147.89	14.63	14.00	75.53	95.63
Sharjah	34.05	42.60	34.61	26.17	26.87	1.56	1.77	13.22	13.76
Other	0.25	1.81	0.46	1.00	1.30	0.21	0.09	0.46	0.56
Other GCC Countries	224.29	474.02	451.54	512.14	596.46	48.84	48.78	325.63	407.36
Bahrain	39.58	71.46	80.55	91.22	100.57	7.73	9.01	57.17	71.83
Kuwait	89.66	221.23	177.01	214.78	246.75	21.39	17.24	133.54	155.53
Qatar	31.87	87.68	88.69	86.86	118.69	8.88	11.72	60.91	89.59
Oman	63.18	93.65	105.29	119.28	130.45	10.84	10.81	74.01	90.41
EU Countries	28.80	53.53	74.51	101.51	119.62	13.24	10.72	70.71	85.61
Germany	13.44	26.87	46.52	53.84	59.03	6.95	5.43	34.71	44.83
France	3.52	3.92	3.64	4.11	8.14	1.00	0.79	4.91	5.42
Netherlands	4.63	8.51	5.65	8.80	7.00	1.36	0.78	4.51	4.26
Spain	0.18	0.87	0.78	4.59	3.44	0.34	0.26	2.27	3.56
Italy	0.47	0.81	2.21	6.74	12.49	0.92	0.69	6.99	7.68
Greece	0.07	0.24	0.26	1.24	2.76	0.60	0.17	1.54	1.51
Sweden	0.67	2.00	2.06	2.75	3.60	0.24	0.24	2.21	2.13
Denmark	4.18	5.87	8.11	10.55	10.87	0.68	1.36	6.26	8.69
Ireland	0.02	0.52	1.26	3.31	6.70	0.66	0.30	4.05	3.27
Belgium	1.62	3.92	4.02	5.58	5.59	0.49	0.70	3.26	4.26
Norway	6.55	8.89	10.22	18.30	16.82	0.92	1.50	9.26	11.21
Switzerland	16.21	34.67	29.11	22.71	20.50	1.21	0.71	7.06	10.16
Australia	5.47	8.26	13.66	19.64	25.10	1.59	1.62	12.97	16.24
Canada	20.52	15.19	22.90	48.49	81.71	6.63	5.46	45.81	47.52
Japan	5.97	8.14	5.28	6.51	6.63	0.38	0.19	3.96	2.72
Other Countries	256.24	658.05	497.14	417.25	573.31	66.79	68.31	284.66	364.86
II. Encashment and Profit in Pak. Rs. of FEBCs & FCBCs	48.26	46.12	45.42	16.50	12.09	0.45	0.06	10.44	1.40
Total (I+II)	2,389.05	4,236.85	3,871.58	4,168.79	4,600.12	391.32	391.33	2,446.52	2,959.35

FEBC =Foreign Exchange Bearer Certificates
FCBC=Foreign Currency Bearer Certificates

4.10 Balances Under Foreign Currency Account Scheme

(Million US Dollars)

END PERIOD	Old FCA					New FCA (FE-25)	TOTAL	
	Non-Residents		Residents	Incremental (FE-31)	Total			
	Institutional (FE-45)	Others						
2002	Jun.	234.3	172.2	615.2	171.9	1,193.6	2,098.2	3,291.8
	Dec.	191.0	106.3	393.2	69.7	760.2	2,059.1	2,819.3
2003	Jun.	-	61.5	231.6	-	293.1	2,296.4	2,589.5
	Dec.	-	50.7	176.4	-	227.1	2,510.0	2,737.1
2004	Jun.	-	42.1	164.8	-	206.9	2,671.0	2,877.9
	Dec.	-	38.7	150.8	-	189.5	3,115.4	3,304.9
2005	Jun.	-	35.3	119.1	-	154.4	3,282.1	3,436.5
	Dec.	-	32.3	89.0	-	121.3	3,507.0	3,628.3
2006	Jun.	-	28.0	74.9	-	102.9	3,543.1	3,646.1
	Dec.	-	23.4	66.2	-	89.5	3,606.0	3,695.5
2006	Jan.	-	32.3	88.2	-	120.5	3,567.1	3,687.6
	Feb.	-	31.3	85.7	-	117.0	3,503.1	3,620.1
	Mar.	-	29.2	81.7	-	110.9	3,429.3	3,540.2
	Apr.	-	27.1	77.8	-	104.9	3,510.0	3,614.9
	May	-	28.5	75.7	-	104.2	3,480.6	3,584.8
	Jun.	-	28.0	74.9	-	102.9	3,543.1	3,646.1
	Jul.	-	28.1	74.1	-	102.1	3,552.7	3,654.8
	Aug.	-	24.5	71.0	-	95.5	3,487.3	3,582.8
	Sep.	-	24.2	69.2	-	93.4	3,488.7	3,582.1
	Oct.	-	24.4	67.7	-	92.2	3,485.4	3,577.5
	Nov.	-	23.7	67.5	-	91.2	3,509.3	3,600.5
	Dec.	-	23.4	66.2	-	89.5	3,606.0	3,695.5
2007	Jan.	-	23.0	65.0	-	87.9	3,638.6	3,726.5

4.11 Foreign Currency Deposits (FE-25) and Utilization

(Million US Dollars)

DESCRIPTION	2006												2007
	Jan.	Feb.	Mar.	Apr.	May	Jun.	Jul.	Aug.	Sep.	Oct.	Nov.	Dec.	Jan.
A. Deposits	3,567.1	3,503.1	3,429.3	3,510.0	3,480.6	3,543.1	3,552.7	3,487.3	3,488.7	3,485.4	3,509.3	3,606.0	3,638.6
1. Resident	3,157.1	3,089.0	3,060.2	3,130.5	3,083.4	3,173.8	3,192.6	3,116.3	3,124.0	3,121.4	3,113.2	3,197.7	3,224.7
i) Demand Deposits	563.7	538.9	505.9	520.9	482.2	474.1	524.6	504.7	487.7	462.3	477.7	509.5	501.1
ii) Savings Deposits	1,981.1	1,933.2	1,904.6	1,957.6	1,856.0	1,906.7	1,829.0	1,814.1	1,825.6	1,849.9	1,859.4	1,870.0	1,898.3
iii) Time Deposits	612.3	616.9	649.7	652.1	745.3	793.0	838.9	797.5	810.7	809.2	776.1	818.1	825.3
2. Non- resident	410.0	414.1	369.1	379.5	397.2	369.3	360.1	371.0	364.7	364.0	396.1	408.3	413.8
i) Demand Deposits	34.2	30.7	30.0	28.3	51.7	28.6	26.8	32.2	26.5	31.3	32.9	35.8	36.1
ii) Savings Deposits	275.7	270.7	268.5	266.5	256.7	252.2	243.6	245.5	243.8	238.9	259.1	252.7	256.3
iii) Time Deposits	100.1	112.7	70.6	84.8	88.7	88.6	89.7	93.4	94.4	93.9	104.1	119.8	121.4
B. Utilization	3,567.1	3,503.1	3,429.3	3,510.0	3,480.6	3,543.1	3,552.7	3,487.3	3,488.7	3,485.4	3,509.3	3,606.0	3,638.6
1. Financing	1,161.6	1,195.3	1,181.7	1,099.4	1,147.0	1,186.0	1,189.7	1,182.3	1,186.3	1,235.1	1,306.6	1,285.4	1,223.8
i) Exports Financing	788.5	821.0	835.1	793.3	851.6	863.8	858.6	840.8	813.3	792.6	847.4	849.9	750.6
a) Pre-shipment	613.3	634.5	639.6	583.6	618.2	635.2	621.0	602.4	583.8	571.9	621.2	641.1	529.4
b) Post-shipment	175.2	186.5	195.5	209.7	233.4	228.6	237.6	238.4	229.5	220.7	226.2	208.8	221.2
ii) Import Financing	373.2	374.3	346.6	306.0	295.5	322.1	331.1	341.4	373.1	442.5	459.1	435.5	473.1
2. Placements	1,637.4	1,379.2	1,324.2	1,652.0	1,528.5	1,659.3	1,456.6	1,411.1	1,401.8	1,330.6	1,207.4	1,627.8	1,708.5
i) With State Bank	720.6	713.4	700.7	700.8	714.7	713.5	721.3	712.1	717.9	708.3	712.3	732.5	746.8
a) CRR 1	183.2	181.2	178.2	177.8	180.9	181.2	182.9	180.9	181.2	179.9	182.4	186.1	193.7
b) SCRR2	537.4	532.2	522.5	523.0	533.8	532.3	538.4	531.2	536.7	528.4	529.9	546.4	553.1
ii) With Banks	916.9	665.9	623.5	951.2	813.7	945.8	735.3	699.0	684.0	622.3	495.0	895.3	961.7
a) Within	47.9	25.4	24.7	25.5	26.3	30.0	23.1	21.9	24.6	9.8	20.0	25.3	28.2
b) Outside	869.0	640.5	598.8	925.7	787.4	915.8	712.2	677.1	659.4	612.5	475.1	870.0	933.5
3. Balances	547.4	529.1	515.5	418.8	434.4	441.0	470.3	466.6	419.8	398.9	484.6	317.1	322.1
i) Balance held abroad	464.5	429.7	424.4	330.4	355.9	358.2	389.4	372.1	322.6	280.5	378.4	196.4	209.7
ii) Cash in hand	82.9	99.4	91.1	88.4	78.5	82.8	80.9	94.5	97.2	118.4	106.2	120.7	112.4
4. Others	220.6	399.5	408.0	340.0	370.7	256.9	436.1	427.3	480.6	520.8	510.8	375.6	384.3

Note: The data relates to last working day of the month.

1. Cash Reserve Requirement
2. Special Cash Reserve Requirement

4.12 Net Inflow of Foreign Private Investment¹

(Million US Dollar)

Country/Economy	2001-02	2002-03	2003-04	2004-05	2005-06	January		July- January	
						2006	2007	2005-06	2006-07
1) Developed countries (a+b+c+d)	363.6	437.2	687.9	875.1	1,737.9	124.9	240.6	1,048.1	1,945.1
a. Western Europe	23.5	191.0	412.3	452.9	831.3	- 1.4	68.3	415.2	946.1
European Union	- 7.1	185.1	54.4	294.0	396.5	- 6.1	61.7	215.1	829.5
Luxembourg	- 5.2	- 0.7	1.4	19.4	22.5	0.5	-	4.7	13.0
Denmark	0.7	- 8.7	0.5	1.2	- 5.2	-	-	1.0	0.3
France	- 6.5	2.6	- 5.6	- 3.5	3.2	0.1	0.2	1.9	- 1.5
Germany	11.2	3.8	4.0	15.2	25.1	0.4	3.7	21.8	22.1
Netherlands	- 5.9	3.1	12.0	59.8	120.4	3.7	6.4	79.6	60.5
Sweden	0.8	0.2	0.1	2.8	6.1	-	1.1	6.1	1.1
U.K	- 2.1	184.8	41.9	199.1	224.5	- 10.8	50.4	100.0	734.1
Other Western Europe	30.6	5.9	357.9	158.9	434.8	4.7	6.6	200.1	116.6
Norway	0.1	0.3	146.6	31.4	252.6	-	-	139.7	24.9
Switzerland	30.5	5.6	211.3	127.5	182.2	4.7	6.5	60.3	91.7
b. North America	330.9	227.1	260.3	375.0	825.5	122.2	160.6	592.3	919.3
Canada	6.2	0.5	0.5	2.0	5.0	0.2	0.1	3.1	1.7
U.S.A	324.7	226.6	259.8	373.0	820.5	122.0	160.5	589.1	917.6
c. Other developed countries	7.2	16.0	13.2	43.4	79.5	4.1	11.4	39.6	77.9
Australia	0.5	2.2	1.5	1.6	31.3	2.6	5.9	18.4	43.4
Japan	6.7	13.8	11.7	41.8	48.2	1.4	5.5	21.2	34.5
d. Unspecified Developed Countries	2.0	3.1	2.2	3.9	1.5	0.0	0.3	1.0	1.8
2) Developing economies (a+b+c+d)	72.7	280.4	159.6	716.7	1,996.6	29.3	23.6	517.8	599.4
a. Caribbean Islands	3.5	2.7	5.0	41.1	2.0	0.2	0.8	10.6	15.1
Cayman Island	0.6	0.5	1.2	34.7	8.1	0.1	0.8	0.4	7.7
Bahamas	-	-	-	0.5	3.1	0.1	-	1.9	1.1
Other Caribbean Countries	2.9	2.2	3.8	5.9	- 9.3	-	-	8.3	6.3
b. Africa	1.1	0.7	9.6	68.1	88.2	6.5	7.3	46.3	60.1
Libya	-	-	-	1.4	2.4	0.2	0.2	1.4	8.6
Egypt	0.3	0.1	0.1	0.4	1.7	-	-	1.6	-
Mauritius	-	0.1	7.2	65.3	83.0	6.2	7.1	42.8	54.4
South Africa	-	0.1	0.3	0.7	0.4	0.1	0.0	0.3	0.1
Other African Countries	0.7	0.4	1.9	0.4	0.7	-	-	0.3	- 3.0
c. Asia	68.0	276.8	143.3	603.1	1,900.6	22.4	14.4	458.7	521.2
West Asia	56.1	276.3	139.1	509.1	1,803.4	11.2	46.1	381.8	426.6
Oman	3.7	9.8	1.3	3.3	3.7	1.6	0.2	2.6	17.8
Iran	-	-	-	0.5	0.5	-	-	0.3	0.3
Kuwait	2.4	1.7	4.5	38.5	21.0	1.0	0.3	11.8	55.1
Bahrain	21.9	43.5	- 3.9	29.4	1.7	- 21.4	2.8	- 6.3	33.3
Qatar	1.1	57.2	- 8.7	- 4.8	8.8	8.5	- 0.0	8.6	- 0.1
Saudi Arabia	1.4	43.6	5.3	18.2	278.5	1.7	1.1	269.7	9.5
Turkey	-	0.3	0.1	3.3	1.8	-	-	1.6	-
U.A.E	17.3	120.0	146.5	417.3	1,487.8	19.6	41.8	93.8	310.8
Unspecified West Asia	8.2	0.0	- 6.0	3.4	- 0.3	0.1	- 0.0	- 0.3	- 0.1
South, East and South-East Asia	11.9	0.5	4.2	94.0	97.2	11.2	- 31.8	76.8	94.6
Bangladesh	1.7	0.4	- 1.5	- 0.3	3.4	0.0	0.7	0.3	5.5
China	0.3	2.7	14.3	0.5	1.7	0.0	0.6	1.5	3.0
Hongkong	23.4	5.2	4.9	61.2	55.2	- 2.2	- 51.0	61.0	- 52.7
Malaysia	0.9	2.5	1.2	22.1	3.6	1.3	- 1.2	- 1.8	- 0.6
Singapore	- 13.3	- 5.0	- 0.4	10.6	15.5	11.8	6.1	14.5	126.5
India	0.0	0.0	0.1	0.1	0.5	0.1	-	0.3	0.1
Korea (South)	0.5	- 6.7	- 8.4	1.4	1.6	0.2	0.1	0.9	1.0
Unspecified South, East and South-East Asia	- 1.4	1.5	- 6.0	- 1.6	15.7	- 0.0	12.8	0.2	12.0
d. Unspecified developing countries	0.1	0.3	1.8	4.4	5.9	0.2	1.1	2.2	3.0
3) Unspecified	38.4	98.6	74.1	84.8	138.0	10.5	36.2	79.4	248.9
Total (1+2+3)	474.7	816.3	921.7	1,676.6	3,872.5	164.2	300.4	1,645.2	2,793.4

1. Direct + Portfolio

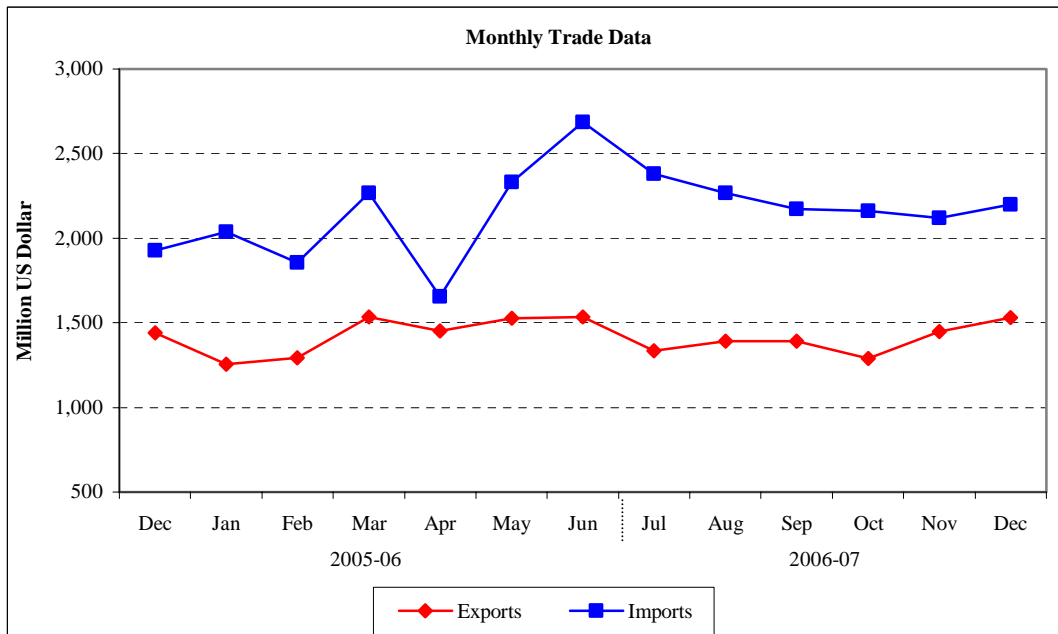
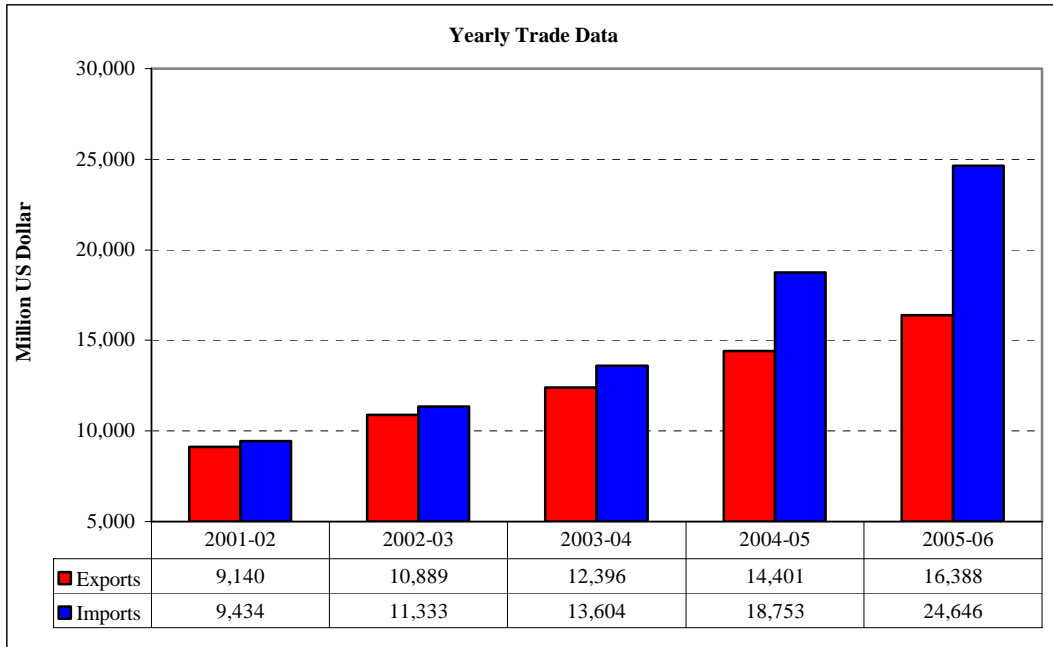
4.13 Foreign Direct Investment Classified by Economic Groups

(Million US Dollar)

ECONOMIC GROUPS	2003-04	2004-05	2005-06	January		July- January	
				2006	2007	2005-06	2006-07
Food and Food Packing	3.3	10.0	53.3	9.7	1.2	39.2	8.7
Beverages	0.7	6.2	6.2	0.2	0.1	4.3	8.1
Tobacco & Cigarettes	0.5	6.7	2.5	0.2	0.6	1.4	4.0
Sugar	0.4	4.2	5.1	0.0	4.3	3.8	13.2
Textiles	-	39.3	47.0	5.5	3.7	24.6	38.0
Rubber & Rubber Products	35.4	-	4.7	1.0	0.8	2.2	3.1
Paper & Pulp	1.7	-	0.1	0.0	0.0	0.1	0.5
Leather & Leather Products	3.5	6.5	3.5	0.1	0.3	2.8	2.0
Chemicals	15.3	51.0	62.9	5.3	0.4	34.6	18.6
Petro Chemicals	1.5	1.1	9.5	-0.0	0.2	0.2	3.3
Petroleum Refining	70.9	23.7	31.2	3.4	14.0	18.6	66.6
Mining & Quarrying	1.1	0.5	7.1	0.5	0.5	3.6	16.3
Oil & Gas Explorations	202.4	193.8	312.7	17.6	25.8	174.3	328.5
Pharmaceuticals & OTC Products	13.2	38.0	34.5	2.8	2.4	19.1	17.2
Fertilizer	-	3.5	- 107.6	1.8	0.3	- 109.2	2.3
Cosmetics	-	1.1	0.8	-	-	0.8	-
Cement	1.9	13.1	39.0	4.7	1.8	28.2	13.7
Ceramics	0.1	0.4	0.4	0.0	0.0	0.2	0.2
Basic Metal	0.1	0.4	3.1	0.5	0.1	1.7	2.9
Metal Products	1.3	2.1	4.0	-	1.4	1.7	3.6
Machinery other than Electrical	0.7	2.8	1.2	0.1	0.2	0.8	2.4
Electrical Machinery	8.7	3.4	1.7	0.1	0.0	1.0	- 1.4
Electronics	7.5	10.3	18.1	2.5	2.0	12.9	10.3
i) Consumer / Household	5.9	7.9	7.8	0.6	1.6	5.6	6.8
ii) Industrial	1.6	2.4	10.3	2.0	0.4	7.3	3.6
Transport Equipment(Automobiles)	3.3	33.1	33.1	2.5	4.5	19.2	28.2
i) Motorcycles	-	0.9	3.3	0.0	0.1	1.2	0.7
ii) Cars	0.9	27.2	26.7	2.0	3.7	16.1	23.1
iii) Buses,Trucks,Vans & Trailers	2.4	5.1	3.2	0.5	0.6	1.9	4.3
Power	-14.2	73.3	320.6	5.3	10.5	291.9	102.4
i) Thermal	-21.3	69.3	319.7	5.3	10.4	291.8	101.6
ii) Hydel	7.1	4.1	0.9	0.0	0.2	0.1	0.8
Construction	32.0	42.7	89.5	12.3	32.7	44.5	86.2
Trade	35.6	52.1	118.0	11.4	10.9	71.9	104.6
Transport	8.8	10.6	18.4	0.9	1.1	4.3	9.9
Tourism	0.1	-	3.4	0.3	0.2	2.0	1.8
Storage Facilities	-	3.7	0.2	0.1	0.1	0.1	0.2
Communications	221.9	517.6	1,937.7	14.8	43.9	346.5	546.4
1) Telecommunications	207.1	494.4	1,905.1	10.7	32.4	333.1	512.3
2) Information Technology	13.7	22.2	30.2	3.9	11.4	11.9	32.6
i) Software Development	6.2	8.8	5.0	0.2	0.1	3.4	2.9
ii) Hardware Development	1.3	3.8	1.1	0.3	0.4	0.7	1.8
iii) I.T.Service	6.2	9.6	24.2	3.4	10.9	7.9	27.9
3) Postal & Courier Services	1.1	1.0	2.4	0.2	0.2	1.5	1.5
Financial Business	242.1	269.4	329.2	10.4	36.9	127.8	553.6
Social Services	0.9	1.1	3.1	0.0	0.7	0.8	2.8
Personal Services	15.5	23.5	61.6	6.0	15.7	35.8	52.5
Others	33.2	78.8	65.5	3.3	6.0	32.9	45.4
TOTAL	949.4	1,524.0	3,521.0	123.4	223.2	1,244.7	2,096.0

Balance of Trade

(a) State Bank of Pakistan



4.14 Balance of Trade

(a) State Bank of Pakistan

(Million US Dollars)

Period	Exports (f.o.b.) ¹		Growth Rate	Imports (f.o.b.) ²		Growth Rate	Balance of Trade
	Value	Cumulative		Value	Cumulative		
2001-02	9,140	--	2.3	9,434	--	-7.5	-294
2002-03	10,889	--	19.1	11,333	--	20.1	-444
2003-04	12,396	--	13.8	13,604	--	20.0	-1,208
2004-05	14,401	--	16.2	18,753	--	37.8	-4,352
2005-06	16,388	--	13.8	24,646	--	31.4	-8,259
2005 Dec	1,440	7,792	19.9	1,929	11,815	-4.7	-489
2006 Jan	1,257	9,050	-12.7	2,037	13,852	5.6	-779
Feb	1,292	10,341	2.7	1,854	15,706	-9.0	-562
Mar	1,536	11,878	18.9	2,269	17,975	22.4	-733
Apr	1,450	13,328	-5.6	1,656	19,631	-27.0	-206
May	1,527	14,855	5.3	2,330	21,961	40.7	-803
Jun	1,533	16,388	0.4	2,685	24,646	15.2	-1,152
Jul	1,334	1,334	-13.0	2,382	2,382	-11.3	-1,049
Aug	1,392	2,726	4.4	2,266	4,648	-4.9	-874
Sep	1,392	4,118	0.0	2,172	6,820	-4.1	-780
Oct. ^P	1,288	5,405	-7.5	2,162	8,982	-0.4	-875
Nov. ^P	1,448	6,853	12.5	2,121	11,103	-1.9	-673
Dec. ^P	1,532	8,386	5.8	2,201	13,305	3.8	-669

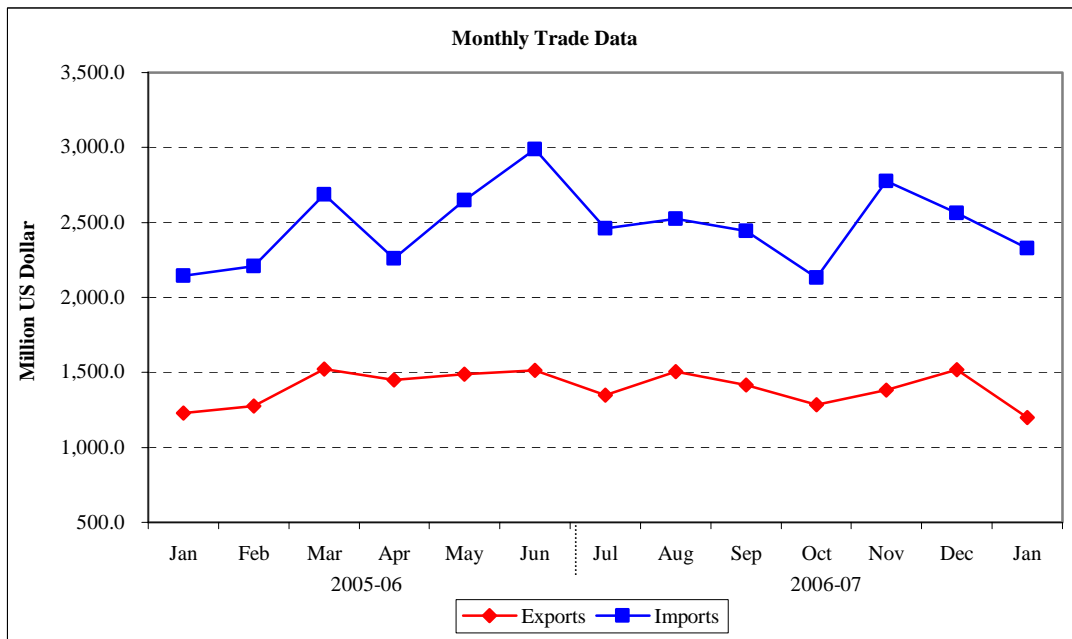
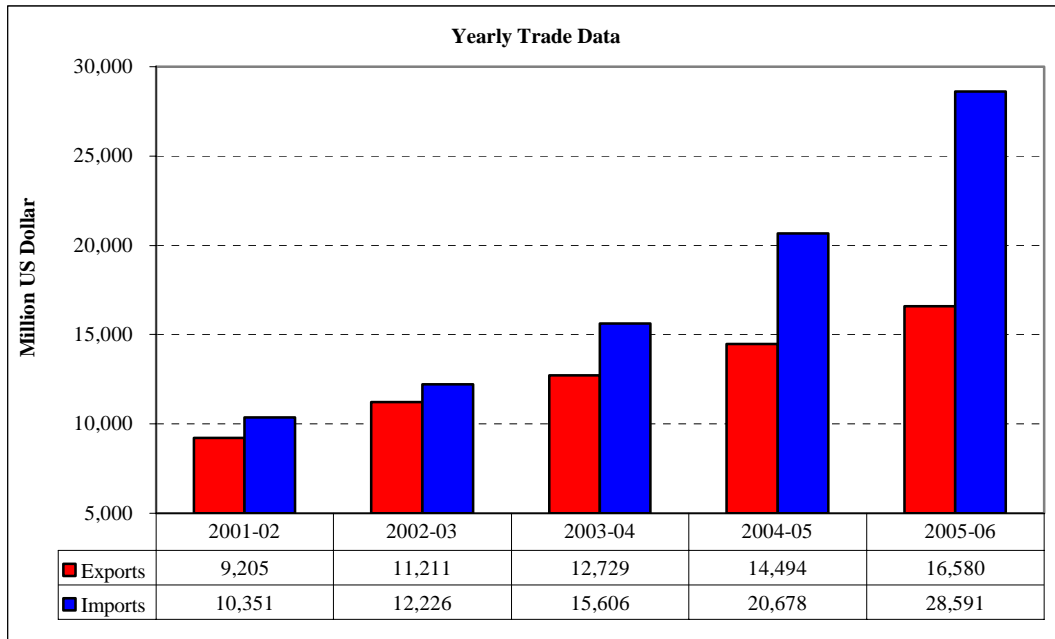
Trade data compiled by Federal Bureau of Statistics and State Bank of Pakistan may differ from each other due to the following reasons:-

1. The SBP export and imports are based on realization of export proceeds and import payments made through the banking channel. Information on exports and imports unaccounted for by the banking channel are collected from the relevant sources and added to the exports/imports data reported by banks to arrive at the overall exports and imports. The trade data of FBS is, on the other hand, based on physical movement of goods crossing the custom boundaries of Pakistan

2. SBP Imports are on Free on Board (f.o.b) basis whereas FBS data is on Carriage Insurance & Freight (c.i.f) basis.

Balance of Trade

(b) Federal Bureau of Statistics



4.14 Balance of Trade

(b) Federal Bureau of Statistics

(Million US Dollars)

PERIOD	Exports ¹	Re-exports	Imports ²	Re-imports	Balance of Trade ³
2001 - 02	9,134.6	70.1	10,339.6	11.1	(-) 1,145.9
2002 - 03	11,160.2	50.4	12,220.3	5.8	(-) 1,015.5
2003 - 04	12,313.3	415.9	15,591.8	14.3	(-) 2,876.9
2004 - 05	14,391.1	103.4	20,598.1	80.2	(-) 6,183.9
2005- 06	16,451.2	129.1	28,580.9	10.3	(-) 12,010.9
2006					
Jan.	1,224.7	5.2	2,144.3	1.2	(-) 915.6
Feb.	1,229.0	45.8	2,210.4	0.1	(-) 935.7
Mar.	1,512.9	8.3	2,681.9	3.4	(-) 1,164.1
Apr.	1,443.2	7.7	2,258.6	0.2	(-) 807.9
May	1,484.1	4.8	2,648.4	0.0	(-) 1,159.5
Jun.	1,510.1	5.2	2,986.3	0.3	(-) 1,471.3
Jul.	1,342.0	4.1	2,459.9	0.5	(-) 1,114.3
Aug.	1,498.5	9.0	2,523.6	1.5	(-) 1,017.6
Sep.	1,412.8	3.4	2,442.3	0.7	(-) 1,026.8
Oct. ^P	1,282.1	-	2,131.7	-	(-) 849.6
Nov. ^P	1,380.0	-	2,773.6	-	(-) 1,393.6
Dec. ^P	1,517.4	-	2,564.2	-	(-) 1,046.8
2007					
Jan. ^P	1,197.3	-	2,330.1	-	(-) 1,132.8

Trade data compiled by Federal Bureau of Statistics and State Bank of Pakistan may differ from each other due to the following reasons:-

1. The SBP export and imports are based on realization of export proceeds and import payments made through the banking channel. Information on exports and imports unaccounted for by the banking channel are collected from the relevant sources and added to the exports/imports data reported by banks to arrive at the overall exports and imports. The trade data of FBS is, on the other hand, based on physical movement of goods crossing the custom boundaries of Pakistan.
2. SBP Imports are on Free on Board (f.o.b) basis whereas FBS data is on Carriage Insurance & Freight (c.i.f) basis.
3. Balance of Trade = Exports + Re-exports - Imports - Re-imports

4.15 Exports By Selected Commodities

(a) State Bank of Pakistan

(Thousand US Dollars)

COMMODITY				2005	2006			
	2003-04	2004-05	2005-06	Dec	Jan	Feb	Mar	Apr
A. Food Group	1,187,836	1,490,451	1,807,173	169,771	165,219	148,031	185,159	176,628
01 Rice	584,104	858,419	1,032,773	92,490	95,994	91,863	116,186	110,864
A) Basmati	466,965	660,544	702,206	64,662	54,576	61,570	78,371	69,877
B) Others	117,139	197,874	330,567	27,828	41,419	30,293	37,815	40,987
02 Fish & Fish Preparations	143,510	157,311	187,983	18,633	19,152	10,223	14,734	17,140
03 Fruits	99,644	100,694	137,000	10,053	11,186	13,644	18,126	15,881
04 Vegetables/Leguminous Vegetable	74,192	64,372	127,123	15,855	11,522	6,978	8,307	6,271
05 Tobacco	11,435	8,456	7,063	338	168	175	279	1,115
06 Wheat	5,292	0	0	0	0	0	0	0
07 Spices	15,285	14,682	13,057	1,443	963	968	1,134	1,350
08 Oil Seeds, Nuts and Kernals	7,288	20,434	14,433	1,574	1,713	1,717	1,569	782
09 Sugar	27,680	33,297	20,230	1,965	3,989	1,906	2,189	1,652
10 Meat and Meat Preparations	25,875	25,793	31,079	2,906	2,636	2,004	2,586	2,402
11 All Other Food Items	193,531	206,994	236,431	24,514	17,895	18,554	20,049	19,170
B. Textile Group	7,934,956	8,705,598	9,141,596	786,077	713,371	681,610	818,287	748,695
12 Raw Cotton	44,559	118,233	99,672	12,097	10,011	11,056	7,564	9,496
13 Cotton Yarn	776,539	816,669	894,930	75,869	61,717	61,727	87,998	71,363
14 Cotton Cloth	1,856,110	2,193,142	2,259,124	200,072	185,099	177,990	193,421	182,362
15 Cotton Carded or Combed	261,245	265,449	284,828	29,971	22,481	24,571	27,897	24,775
16 Yarn Other than Cotton Yarn	107,665	98,672	111,234	9,359	8,054	10,451	10,495	7,875
17 Knitwear	1,689,360	1,882,030	1,917,854	160,050	138,540	134,324	177,745	152,696
18 Bed Wear	1,008,135	1,079,305	1,313,318	105,206	111,185	100,673	111,923	118,856
19 Towels	109,825	125,649	120,715	9,599	8,832	8,761	11,502	9,641
20 Tents,Canvas & Tarpulin	85,592	87,695	73,321	11,255	7,884	6,572	5,554	5,156
21 Readymade Garments	693,278	770,324	963,856	77,369	77,873	75,839	85,779	74,834
22 Art,Silk & Synthetic Textile	409,330	359,243	281,674	26,034	20,915	16,336	28,059	20,786
23 Madeup Articles(incl.Other Tex	298,725	328,766	313,689	25,076	20,615	21,161	26,917	25,754
24 Other Textile Materials	594,592	580,421	507,381	44,121	40,165	32,149	43,434	45,101
C. Petroleum Group	217,564	512,179	779,235	68,644	56,805	53,837	86,777	85,659
25 Petroleum Crude	10,306	37,386	113,286	6,077	7,687	5,317	11,985	14,083
26 Petroleum Products	177,493	282,133	147,573	13,414	4,517	2,217	4,336	8,119
27 Solid Fuel including Naptha	29,765	192,660	518,377	49,153	44,601	46,303	70,456	63,456
D. Other Manufacture	2,278,047	2,746,384	3,035,969	258,772	242,776	244,270	298,886	258,126
28 Carpets,Rugs & Mats	231,740	278,827	271,500	26,547	21,160	20,360	24,825	21,291
29.Sports Goods	359,066	386,381	462,959	36,567	37,602	33,578	40,255	38,601
30 Leather Tanned	365,123	380,054	430,857	37,305	31,829	29,947	37,466	35,771
31.Leanth Manufactures	295,550	311,508	434,182	42,192	39,621	39,182	50,159	22,895
32.Footwear	77,686	115,734	120,557	7,870	11,213	13,362	14,934	10,101
33 Surgical Goods & Medical Instr	167,295	192,014	220,855	17,905	15,197	18,142	19,427	19,066
34 Cutlery	20,353	32,785	30,907	3,696	1,834	2,548	2,683	2,119
35 Onyx Manufactured	10,326	11,636	10,264	720	889	601	1,169	780
36.Chemical and Pharmaceutical Products	371,027	549,868	547,694	38,002	50,529	48,310	59,438	63,096
37.Engineering Goods	238,874	285,579	311,515	34,366	24,044	17,795	24,046	29,513
38 Gems	3,072	3,787	4,372	672	520	223	251	325
39 Jewellery	11,145	13,463	10,779	1,633	932	965	580	1,110
40 Furniture	13,050	12,039	10,552	1,033	750	762	1,064	880
41 Molasses	52,270	77,828	47,614	955	1,495	3,212	7,799	8,626
42 Handicrafts	55	251	324	21	13	3	133	95
43 Cement	41,183	69,074	97,852	7,657	3,054	13,496	12,217	1,717
44 Guar and Guar Products	20,233	25,556	23,185	1,632	2,092	1,784	2,440	2,140
E. All Others	396,879	538,743	546,561	42,128	42,041	40,258	52,892	43,055
Export Receipts (Banks)	12,015,283	13,993,354	15,310,534	1,325,393	1,220,212	1,168,006	1,442,001	1,312,162
Export Other Than Bank	380,717	407,146	1,077,366	114,907	37,188	123,694	94,399	137,938
Total Export	12,396,000	14,400,500	16,387,900	1,440,300	1,257,400	1,291,700	1,536,400	1,450,100

4.15 Exports By Selected Commodities

(a) State Bank of Pakistan

(Thousand US Dollars)

COMMODITY	2006							
	May	Jun	Jul	Aug	Sep	Oct ^P	Nov ^P	Dec ^P
A. Food Group	190,431	161,357	136,478	148,563	135,678	123,947	145,726	148,087
01 Rice	123,057	100,880	79,725	89,052	79,264	72,940	84,926	87,765
A) Basmati	59,060	74,297	59,687	69,501	58,853	54,798	57,380	63,419
B) Others	63,997	26,583	20,038	19,551	20,411	18,142	27,547	24,346
02 Fish & Fish Preparations	21,283	18,501	13,337	13,627	13,844	13,554	18,185	19,175
03 Fruits	10,786	10,733	11,865	13,921	9,138	6,945	8,304	11,408
04 Vegetables/Leguminous Vegetable	7,283	6,894	6,062	6,305	4,458	3,267	5,615	3,426
05 Tobacco	897	342	752	162	708	130	1,952	1,658
06 Wheat	0	0	0	0	0	0	0	0
07 Spices	1,342	1,407	1,134	1,510	1,334	1,274	1,072	1,444
08 Oil Seeds, Nuts and Kernals	922	460	1,437	1,637	2,302	880	789	3,277
09 Sugar	815	0	0	0	7	0	0	0
10 Meat and Meat Preparations	2,734	2,646	2,229	2,448	5,468	5,923	5,611	4,770
11 All Other Food Items	21,313	19,494	19,937	19,901	19,155	19,033	19,271	15,164
B. Textile Group	790,959	874,153	778,039	872,339	862,231	784,777	840,352	855,687
12 Raw Cotton	7,528	5,992	6,393	4,229	6,866	4,134	8,739	7,246
13 Cotton Yarn	80,286	102,411	81,628	101,431	90,594	79,664	100,471	96,742
14 Cotton Cloth	196,964	204,453	187,955	198,706	205,587	179,499	196,096	198,821
15 Cotton Carded or Combed	25,007	23,659	20,952	24,528	25,897	18,760	18,088	22,426
16 Yarn Other than Cotton Yarn	7,889	8,781	9,580	14,286	10,880	18,672	14,122	13,378
17 Knitwear	160,793	186,454	176,403	197,005	203,991	174,379	175,502	175,050
18 Bed Wear	117,015	130,619	101,098	116,492	108,913	112,756	117,484	115,952
19 Towels	11,282	11,467	11,703	12,343	15,770	14,178	13,344	14,257
20 Tents,Canvas & Tarpulin	3,803	5,510	4,746	5,435	6,434	4,842	7,474	8,449
21 Readymade Garments	86,485	96,271	91,385	94,494	93,604	85,307	82,436	88,939
22 Art,Silk & Synthetic Textile	19,829	21,089	19,329	24,027	20,057	23,406	27,792	35,932
23 Madeup Articles(incl.Other Tex	25,915	27,824	27,642	32,163	29,470	25,457	27,687	27,647
24 Other Textile Materials	48,163	49,622	39,225	47,201	44,167	43,723	51,118	50,848
C- Petroleum Group	58,678	82,530	77,165	68,655	65,488	50,187	84,397	58,046
25 Petroleum Crude	8,213	11,730	10,022	11,177	11,754	9,752	22,750	4,965
26 Petroleum Products	11,454	17,230	7,390	42,550	35,744	14,946	16,318	28,902
27 Solid Fuel including Naptha	39,011	53,569	59,752	14,928	17,989	25,490	45,329	24,179
D. Other Manufacture	275,422	262,550	217,518	256,660	218,366	215,701	226,281	229,719
28 Carpets,Rugs & Mats	23,670	24,616	20,343	18,878	22,029	23,599	21,631	22,305
29.Sports Goods	47,063	48,352	37,673	37,659	32,282	31,010	32,002	31,551
30 Leather Tanned	39,541	37,236	36,116	45,791	37,318	35,051	36,107	37,747
31.Leaner Manufactures	24,591	26,712	20,988	25,538	26,148	24,609	22,909	25,464
32.Footwear	9,977	6,662	8,005	11,326	9,170	5,950	8,583	9,073
33 Surgical Goods & Medical Instr	21,762	22,073	16,571	17,808	18,008	19,184	16,437	21,525
34 Cutlery	2,324	3,011	2,401	2,517	2,721	3,718	2,690	2,660
35 Onyx Manufactured	691	906	704	945	914	912	746	828
36.Chemical and Pharmaceutical Products	57,573	49,891	38,423	41,733	30,799	30,831	42,008	40,509
37.Engineering Goods	27,774	25,486	18,479	34,155	24,403	32,163	28,005	28,025
38 Gems	382	341	225	284	327	295	338	702
39 Jewellery	702	1,121	638	1,056	892	934	1,049	917
40 Furniture	780	870	819	794	995	530	1,148	1,266
41 Molasses	7,188	5,966	4,126	2,880	2,455	28	3,385	1,303
42 Handicrafts	3	13	0	16	2	41	41	254
43 Cement	9,542	7,155	9,288	12,627	8,245	4,665	6,820	4,113
44 Guar and Guar Products	1,859	2,136	2,718	2,653	1,658	2,180	2,383	1,476
E. All Others	57,362	49,781	45,588	48,610	46,054	38,439	49,008	49,585
Export Receipts (Banks)	1,372,852	1,430,370	1,254,788	1,394,826	1,327,816	1,213,051	1,345,765	1,341,123
Export Other than Bank	153,948	102,930	78,912	-2,826	64,284	74,549	102,235	191,177
Total Export	1,526,800	1,533,300	1,333,700	1,392,000	1,392,100	1,287,600	1,448,000	1,532,300

Source: Statistics & Data Warehouse Department, SBP

4.15 Exports¹ by Selected Commodities

(b) Federal Bureau of Statistics

(Thousand US Dollars)

COMMODITY	2003-04	2004-05	2005-06	2006				
				Jan.	Feb.	Mar.	Apr.	May
A. Primary Commodities	1,010,918	1,341,002	1,616,029	129,347	131,148	169,220	182,956	153,409
1. Rice	634,457	932,549	1,157,814	98,373	96,661	128,582	117,802	112,075
a) Basmati	421,748	439,240	479,616	29,474	36,628	48,838	41,404	40,707
b) Others	212,709	493,309	678,198	68,899	60,033	79,744	76,398	71,369
2. Raw Cotton	47,671	109,957	68,151	6,825	5,376	7,069	4,665	6,127
3. Fish & Fish Preparations	152,890	138,943	194,157	9,785	11,205	15,787	21,045	22,713
4. Fruits	102,679	91,242	125,451	9,729	11,948	11,589	14,459	5,287
5. Vegetables	25,682	20,989	29,346	2,306	3,065	2,342	3,814	3,307
6. Tobacco	11,186	11,381	6,455	343	452	604	19217	829
7. Wheat	6,011	0	0	0	0	0	0	0
8. Spices	19,115	14,347	23,550	1079	1,734	2,106	1,632	2,180
9. Oil seeds, Nuts and Kernels	11,227	21,594	11,105	907	707	1,141	322	891
B. Textile Manufactures	8,039,378	8,445,254	9,835,333	741,406	711,850	856,719	811,907	870,513
10. Cotton Yarn	1,126,876	1,056,535	1,382,874	118,215	108,634	137,225	125,127	124,706
11. Cotton Fabrics	1,711,492	1,862,886	2,108,183	169,638	162,609	187,048	177,659	179,709
12. Knitwear	1,458,736	1,635,033	1,751,494	110,891	114,631	139,596	131,574	162,789
13. Bed Wear	1,383,334	1,449,533	2,038,064	158,654	143,727	159,682	172,775	174,815
14. Towels	403,500	520,480	587,641	46,283	45,075	55,787	46,803	53,892
15. Tarpaulin & Canvas Goods	74,757	66,569	38,902	2,573	3,583	5,890	3,852	4,024
16. Readymade Garments	993,322	1,087,954	1,309,990	91,273	86,606	115,485	103,792	118,308
17. Synthetic Tex. Fabrics	470,757	300,264	200,308	12,880	15,475	18,786	18,754	16,427
18. Other Textile made up (Excl. Towels & Bed Wear)	416,604	466,000	417,877	30,999	31,510	37,220	31,571.0	35,843
C. Other Manufactures	2,227,657	3,023,481	3,500,479	262,124	271,897	349,654	327,249	317,443
19. Carpets & Carpeting	231,449	277,842	257,263	15,556	17,850	21,979	20,249	24,022
20. Petroleum & Petroleum Products	294,460	476,090	825,654	58,194	58,361	96,991	79,961	67,384
21. Sports Goods	324,751	307,129	343,329	26,209	24,622	36,690	38,936	40,305
22. Leather Tanned	251,693	303,606	292,394	19,834	18,909	26,265	24,147	30,054
23. Leather Manufactures	414,342	526,774	722,554	56,460	62,396	58,871	46,926	58,224
24. Surgical & Medical Instruments	88,833	163,078	182,877	12,081	12,109	13,298	14,315	13,649
25. Footwear	132,563	145,220	137,666	8,992	11,569	15,915	13,116	11,979
26. Cutlery	29,669	34,264	34,259	1,999	2,499	2,637	2,856	2,844
27. Onyx Manufactured	11,564	8,700	13,543	727	993	1058	1276	1,553
28. Chemicals and Pharmaceutical Products	262,957	452,576	432,832	44,019	44,396	42,719	42,380	35,906
29. Engineering goods	100,008	218,866	181,983	12,692	12,392	20,868	30,121	25,914
30. Gems	3,693	3,874	4,628	494	351	171	385	498
31. Jewellery	24,489	19,889	16,865	239	2,172	144	1252	2,551
32. Furniture	10,326	13,135	11,040	792	843	1211	873	741
33. Molasses	46,860	72,438	43,592	3,836	2,435	10,837	10,456	1,819
D. Others	1,035,332	1,581,344	1,499,336	91,803	114,057	137,294	121,120	142,772
TOTAL	12,313,285	14,391,081	16,451,177	1,224,680	1,228,952	1,512,887	1,443,232	1,484,137

4.15 Exports¹ by Selected Commodities

(b) Federal Bureau of Statistics

(Thousand US Dollars)

COMMODITY	2006							2007
	Jun.	Jul.	Aug.	Sep.	Oct. ^P	Nov. ^P	Dec. ^P	Jan. ^P
A. Primary Commodities	120,296	91,354	115,323	114,691	130,801	130,319	136,317	131,263
1. Rice	81,773	70,419	81,517	72,427	95,567	94,306	95,372	93,466
a) Basmati	50,841	36,090	46,532	55,370	44,854	48,281	42,866	50,922
b) Others	30,932	34,330	34,984	17,057	50,713	46,025	52,506	42,544
2. Raw Cotton	4,916	1,078	2,137	3,448	6,255	7,097	6,947	4,550
3. Fish & Fish Preparations	17,237	9,830	15,921	19,747	18,962	17,060	14,354	11,236
4. Fruits	10,383	5,405	10,914	10,936	5,660	5,187	13,270	14,685
5. Vegetables	2,871	1,394	1,482	2,377	1,089	1,795	3,515	4,123
6. Tobacco	248	198	213	2,567	594	198	99	312
7. Wheat	0	0	0	0	0	0	0	0
8. Spices	1,918	2,501	2,053	2,024	1,436	2,058	1,922	1,610
9. Oil seeds, Nuts and Kernels	950	529	1,086	1,165	1,238	2,618	838	1,281
B. Textile Manufactures	928,804	853,197	957,908	892,096	741,206	817,412	774,211	729,082
10. Cotton Yarn	131,054	113,008	130,477	117,189	110,767	113,786	111,599	102,467
11. Cotton Fabrics	183,793	168,109	187,972	170,442	123,870	143,772	6,947	136,700
12. Knitwear	181,192	173,518	200,994	183,150	167,619	153,191	182,171	130,556
13. Bed Wear	196,520	180,878	178,203	164,949	134,646	155,002	175,109	137,242
14. Towels	55,661	50,893	65,079	58,288	37,824	43,110	50,913	31,243
15. Tarpaulin & Canvas Goods	5,693	5,566	5,630	7,015	6,766	7,278	10,298	4,222
16. Readymade Garments	119,418	119,714	134,163	119,893	96,772	100,266	132,260	106,590
17. Synthetic Tex. Fabrics	19,359	12,527	22,170	34,507	31,273	66,147	63,050	48,113
18. Other Textile made up (Excl. Towels & Bed Wear)	36,114	28,984	33,220	36,663	31,669	34,860	41,864	31,949
C. Other Manufactures	325,655	277,037	287,783	264,177	158,776	194,703	211,750	150,482
19. Carpets & Carpeting	19,782	13,940	17,971	25,500	21,586	23,152	20,661	9,215
20. Petroleum & Petroleum Products	86,706	68,920	83,585	63,469	22,889	34,943	28,577	30,504
21. Sports Goods	32,133	29,488	22,078	21,960	12,262	17,438	22,648	14,061
22. Leather Tanned	29,383	25,800	25,192	24,966	11,700	17,191	19,314	11,827
23. Leather Manufactures	60,930	58,155	54,383	49,633	34,871	32,538	40,419	20,697
24. Surgical & Medical Instruments	15,960	12,159	12,386	14,485	10,100	2,503	4,582	4,895
25. Footwear	14,343	11,097	10,794	8,936	4,770	6,735	14,699	7,721
26. Cutlery	3,680	2,785	3,049	2,901	2,805	2,585	3,268	1,856
27. Onyx Manufactured	1,352	843	1,338	1,379	1,139	1,054	1,314	986
28. Chemicals and Pharmaceutical	37,279	31,646	30,301	26,193	22,989	32,867	32,355	29,764
29. Engineering goods	18,738	16,994	21,923	18,486	12,311	15,990	18,609	10,644
30. Gems	262	102	576	626	231	412	624	788
31. Jewellery	1,008	395	2,630	2,772	545	1,383	1,396	2,185
32. Furniture	732	740	1,577	1,035	578	774	985	411
33. Molasses	3,367	3,973	0	1,836	0	5,138	2,299	4,928
D. Others	135,330	120,414	137,533	141,824	251,275	237,567	395,088	186,437
TOTAL	1,510,085	1,342,002	1,498,547	1,412,788	1,282,058	1,380,001	1,517,366	1,197,264

1. Excluding re-exports

Source : Federal Bureau of Statistics

4.16 Imports By Selected Commodities

(a) State Bank of Pakistan

(Thousand US Dollar)

COMMODITY	2003-04	2004-05	2005-06	2005	2006				
				Dec	Jan	Feb	Mar	Apr	
A. Food Group	1,391,528	1,865,295	2,483,783	162,637	191,680	161,564	215,113	193,980	
1.Milk And Cream Incl For Infants	29,204	33,279	56,487	3,612	5,475	4,966	5,966	7,214	
2.Wheat Unmilled	162	151,890	94,108	4,729	27,092	7,866	26,917	0	
3.Dry Fruits	5,442	27,187	37,310	2,679	2,182	1,982	2,853	3,619	
4.Tea	182,042	175,450	191,911	12,828	16,965	15,790	22,405	12,476	
5.Spices	36,257	41,004	45,090	4,890	4,450	3,034	3,930	5,161	
6.Soyabean Oil	27,749	28,226	13,505	67	5,324	0	81	63	
7.Palm Oil	660,811	712,598	700,719	49,891	73,300	50,362	44,169	38,973	
8.Sugar	1,884	79,614	546,704	4,082	3,778	16,340	39,660	57,139	
9.Pulses	52,409	104,806	157,442	11,583	14,910	12,212	14,869	9,328	
10.All Others Food Items	395,569	511,240	640,506	68,275	38,205	49,011	54,264	60,005	
B. Machinery Group	2,404,122	3,994,183	4,709,090	437,774	357,769	348,581	379,101	346,890	
11.Power Generating Machinery	212,089	371,147	367,438	36,955	23,051	30,904	31,346	33,292	
12.Office Mach.Incl.Data Pros. Equip.	184,530	217,835	246,967	18,055	17,925	22,496	22,101	14,363	
13.Textile Machinery	478,755	910,817	822,807	72,424	65,314	54,475	64,993	55,197	
14.Construction & Mining Machinery	7,027	47,541	55,705	6,563	4,881	7,263	4,202	3,062	
15.Electrical Machinery & Apparatus	361,325	401,373	485,668	40,135	35,082	38,722	32,367	49,343	
16. Telecom	378,953	777,420	1,197,551	137,063	83,501	78,591	114,805	86,646	
17.Agricultural Mach. & Implement	95,383	128,273	132,061	15,170	10,834	9,652	5,646	8,176	
18.Other Machinery	686,060	1,139,777	1,400,892	111,410	117,182	106,478	103,642	96,813	
C. Transport Group	775,714	1,005,094	1,177,138	85,060	125,454	89,381	112,968	99,660	
19. Road Motor Vehicles	673,051	929,937	1,051,566	77,898	91,795	77,652	98,887	94,055	
19.1 Completely Built Unit (Cbu)	42,099	60,168	39,099	2,997	3,028	1,757	5,315	1,584	
19.2 Completely Knocked Down (Ckd)	539,156	705,790	885,832	58,085	82,026	66,888	87,042	85,061	
19.3.Parts	76,446	123,314	86,988	10,073	5,289	7,748	5,418	6,789	
19.4.Others	15,351	40,665	39,647	6,743	1,453	1,260	1,111	621	
20.Aircrafts,Ships And Boats	88,088	53,307	107,724	5,603	32,634	7,342	10,911	4,686	
21. Others Transport Equipments	14,575	21,850	17,848	1,560	1,025	4,387	3,170	919	
D. Petroleum Group	2,264,112	3,549,920	5,955,924	371,101	468,254	524,803	509,134	421,953	
22.Petroleum Products	1,290,853	1,772,534	2,552,994	138,534	138,644	247,361	174,003	189,962	
23.Petroleum Crude	973,260	1,777,386	3,402,931	232,567	329,609	277,442	335,131	231,990	
E. Textile Group	1,071,669	950,679	1,090,308	103,201	101,310	75,953	103,935	88,704	
24.Raw Cotton	626,598	483,957	427,586	46,655	47,458	32,993	41,085	38,332	
25.Synthetic Fibre	107,863	136,325	238,881	23,041	17,233	16,667	24,366	17,786	
26.Synthetic & Artificial Silk Yarn	121,839	132,831	225,165	15,618	16,414	13,683	18,675	17,367	
27.Worn Clothing	9,903	7,337	9,766	1,009	830	754	644	744	
28.Other Textile Items	205,466	190,230	188,912	16,878	19,374	11,858	19,164	14,476	
F. Agri. & Other Chemical	2,750,584	3,473,181	4,046,091	354,021	340,670	256,958	342,593	252,599	
29.Fertilizer Manufactured	277,318	342,326	635,596	47,710	56,876	3,573	49,456	9,766	
30.Insecticides	110,770	133,484	101,055	11,399	7,156	6,582	7,252	5,208	
31.Plastic Materials	554,881	767,119	919,894	76,606	84,049	73,328	89,936	74,780	
32.Medicinal Products	287,478	276,211	329,364	26,820	36,411	22,425	26,163	25,117	
33.Others	1,520,138	1,954,041	2,060,182	191,485	156,178	151,050	169,786	137,729	
G. Metal Group	892,273	1,474,319	2,060,861	211,336	196,119	174,212	200,189	129,285	
34.Gold	52	42	29	0	0	20	0	0	
35.Iron And Steel Scrap	70,685	151,047	238,804	28,681	19,289	13,509	21,739	19,802	
36.Iron And Steel	552,551	975,143	1,402,701	151,377	140,535	121,946	137,423	82,078	
37.Aluminium Wrought & Worked	112,749	127,864	133,977	11,296	9,999	14,105	13,342	9,622	
38.All Other Metals & Artificials	156,236	220,223	285,352	19,982	26,296	24,632	27,687	17,782	
H. Miscellaneous Group	382,304	467,027	614,749	47,820	48,120	46,242	53,300	53,876	
39.Rubber Crude Incl.Synth/Reclaim	69,680	77,668	102,022	6,639	7,486	7,095	10,417	10,167	
40.Rubber Tyres & Tubes	73,261	111,599	138,312	11,586	11,318	8,549	8,756	9,591	
41.Wood & Cork	35,334	48,147	61,515	3,359	3,605	4,391	6,012	4,529	
42.Jute	22,208	29,163	36,092	4,953	4,882	2,960	2,253	4,186	
43.Paper&Paper Board & Manf.	181,821	200,450	276,809	21,283	20,829	23,246	25,862	25,402	
I. All Others	1,514,981	1,733,498	2,054,494	151,969	165,214	148,386	207,936	142,217	
Import Payments (Banks)	13,447,288	18,513,196	24,192,440	1,924,919	1,994,590	1,826,081	2,124,269	1,729,162	
Imports Other than Bank	156,712	239,804	453,973	4,189	42,022	28,111	144,787	-73,098	
Total Import	13,604,000	18,753,000	24,646,413	1,929,108	2,036,612	1,854,192	2,269,056	1,656,064	

4.16 Imports By Selected Commodities

(a) State Bank of Pakistan

(Thousand US Dollar)

COMMODITY	2006								
	May	Jun	Jul	Aug	Sep	Oct. ^P	Nov. ^P	Dec. ^P	
A. Food Group	289,645	303,197	225,238	276,824	225,269	222,981	232,988	185,037	
1.Milk And Cream Incl For Infants	6,102	2,819	6,495	4,969	4,156	2,752	6,015	8,271	
2.Wheat Unmilled	0	0	0	0	0	0	0	0	
3.Dry Fruits	5,423	3,864	2,328	3,747	3,600	2,458	3,350	3,344	
4.Tea	16,195	17,386	20,847	17,061	13,291	9,525	15,425	18,342	
5.Spices	3,943	3,193	4,088	4,574	4,120	3,151	3,442	2,725	
6.Soyabean Oil	21	33	136	198	3,258	536	783	1,508	
7.Palm Oil	61,027	69,163	54,305	50,366	95,319	93,526	80,717	53,615	
8.Sugar	111,123	133,442	87,147	135,314	46,924	22,974	13,118	1,528	
9.Pulses	17,572	20,073	23,198	17,342	24,786	15,611	20,371	19,672	
10.All Others Food Items	68,238	53,225	26,694	43,253	29,815	72,449	89,766	76,032	
B. Machinery Group	423,766	483,568	384,690	379,433	474,208	397,144	411,772	466,000	
11.Power Generating Machinery	41,441	38,350	49,028	62,804	29,677	74,748	26,813	51,746	
12.Office Mach.Incl.Data Pros. Equip.	28,794	28,098	29,247	27,888	25,243	18,270	21,501	25,479	
13.Textile Machinery	63,315	64,365	43,072	44,350	38,261	33,793	45,907	57,074	
14.Construction & Mining Machinery	5,363	5,503	7,126	6,557	5,036	6,472	8,587	4,917	
15.Electrical Machinery & Apparatus	50,359	36,391	45,469	54,280	60,702	39,381	55,831	46,343	
16. Telecom	76,339	169,568	93,129	69,998	191,884	85,971	120,964	144,090	
17.Agricultural Mach. & Implement	13,004	14,212	12,621	17,721	13,663	21,264	18,795	13,176	
18.Other Machinery	145,152	127,081	104,996	95,835	109,744	117,246	113,373	123,174	
C. Transport Group	111,245	139,239	108,206	102,047	74,393	120,352	80,191	95,218	
19. Road Motor Vehicles	97,898	117,229	92,452	95,009	68,437	116,615	76,255	69,951	
19.1 Completely Built Unit (Cbu)	4,518	2,950	4,103	3,274	4,368	4,932	15,397	11,700	
19.2 Completely Knocked Down	83,563	95,002	79,415	83,905	58,509	105,714	53,731	45,725	
19.3.Parts	9,350	9,558	5,671	5,769	4,594	5,634	6,354	7,763	
19.4.Others	467	9,719	3,263	2,061	967	334	772	4,763	
20.Aircrafts,Ships And Boats	11,661	21,361	14,110	5,718	4,721	2,896	3,360	24,020	
21. Others Transport Equipments	1,685	648	1,644	1,320	1,235	841	576	1,247	
D. Petroleum Group	663,179	633,897	796,529	717,492	620,474	640,489	549,542	509,752	
22.Petroleum Products	355,226	317,486	411,262	371,712	353,899	355,264	304,216	190,933	
23.Petroleum Crude	307,953	316,411	385,267	345,781	266,574	285,226	245,326	318,819	
E. Textile Group	93,963	107,347	104,636	99,515	81,779	73,996	85,081	91,709	
24.Raw Cotton	33,670	40,429	45,515	42,453	25,512	29,414	38,719	45,292	
25.Synthetic Fibre	21,440	27,302	21,523	21,623	20,642	15,281	14,900	13,323	
26.Synthetic & Artificial Silk Yarn	22,577	21,453	20,273	19,628	19,880	17,934	17,443	18,912	
27.Worn Clothing	592	770	723	747	780	615	621	596	
28.Other Textile Items	15,684	17,393	16,602	15,063	14,964	10,752	13,398	13,586	
F. Agri. & Other Chemical	327,587	382,143	311,265	334,017	323,137	358,766	367,037	346,316	
29.Fertilizer Manufactured	29,277	98,491	55,836	28,496	33,232	38,906	71,439	23,672	
30.Insecticides	5,292	5,627	6,560	5,807	6,372	8,049	7,625	11,562	
31.Plastic Materials	82,487	66,550	76,008	80,205	80,705	102,375	77,623	78,404	
32.Medicinal Products	28,823	25,670	27,298	28,785	26,890	21,879	27,491	22,885	
33.Others	181,709	185,805	145,562	190,723	175,938	187,559	182,859	209,793	
G. Metal Group	162,159	166,556	157,918	146,434	153,579	153,427	203,624	160,747	
34.Gold	0	9	0	0	0	0	0	0	
35.Iron And Steel Scrap	11,286	16,260	25,541	12,005	9,611	6,823	18,099	15,449	
36.Iron And Steel	113,871	108,821	98,504	84,279	105,662	107,000	142,213	95,999	
37.Aluminium Wrought & Worked	10,803	12,770	12,021	13,384	14,030	15,077	15,882	16,786	
38.All Other Metals & Artificials	26,198	28,696	21,852	36,766	24,275	24,527	27,430	32,513	
H. Miscellaneous Group	57,462	57,578	58,081	52,598	53,494	51,764	55,293	52,220	
39.Rubber Crude Incl.Synth/Reclaim	11,786	9,131	10,442	9,221	10,962	7,617	7,411	5,906	
40.Rubber Tyres & Tubes	10,879	10,524	10,599	12,010	11,666	12,395	14,184	12,844	
41.Wood & Cork	5,598	6,985	5,659	6,592	5,342	3,850	6,309	4,996	
42.Jute	336	4,106	2,170	913	2,349	5,706	3,128	5,842	
43.Paper&Paper Board & Manf.	28,864	26,831	29,211	23,861	23,176	22,196	24,260	22,634	
I. All Others	138,398	279,809	250,598	168,336	225,652	159,751	222,540	209,417	
Import Payments (Banks)	2,267,403	2,553,333	2,397,161	2,276,696	2,231,985	2,178,670	2,208,067	2,116,416	
Imports Other than Bank	62,808	132,003	-14,961	-10,896	-60,185	-16,470	-86,967	84,984	
Total Import	2,330,211	2,685,336	2,382,200	2,265,800	2,171,800	2,162,200	2,121,100	2,201,400	

Source: Statistics & Data Warehouse Department, SBP

4.16 Imports¹ by Selected Commodities

(b) Federal Bureau of Statistics

(Thousand US Dollars)

COMMODITY	2003-04	2004-05	2005-06	2006				
				Jan.	Feb.	Mar.	Apr.	May
A. Food Group	1,033,303	1,408,794	2,063,322	135,029	141,916	183,747	191,842	186,115
1 . Milk & Cream Incl. Milk Food for Infants	21,277	34,178	61,394	3,176	3,216	16,208	5,151	7,887
2 . Wheat Unmilled	23,609	92,988	132,751	28,844	26,389	13,938	4,584	0
3 . Dry Fruits	18,334	43,595	57,780	3,435	2,795	5,008	5,618	7,566
4 . Tea	192,517	222,556	222,782	19,470	17,818	25,777	13,910	13,467
5 . Spices	40,800	47,391	52,770	4,375	4,467	4,296	4,318	4,483
6 . Soya bean Oil	45,612	54,534	21,469	1,294	1,019	3,727	4,827	1,617
7 . Palm Oil	612,990	703,179	717,273	57,032	57,073	49,280	44,027	46,645
8 . Sugar	3,273	87,871	623,288	7,522	13,236	52,827	99,164	91,445
9 . Pulses	74,891	122,502	173,815	9,881	15,903	12,686	10,243	13,005
B. Machinery Group	4,220,359	5,918,199	8,323,212	640,846	718,038	952,676	668,090	763,084
10. Power Generating Machine	277,840	392,627	511,584	40,308	33,344	41,478	53,808	45,975
11. Office Machine Including Data Processing Equipment	209,458	273,515	293,561	20,112	24,060	28,683	29,361	25,515
12. Textile Machinery	597,959	928,600	817,240	66,450	51,725	62,764	57,767	64,266
13. Construction & Mining Machinery	101,481	140,550	190,077	16,231	13,832	31,995	17,341	17,219
14. Electrical Machinery & Apparatus	258,116	355,536	508,724	41,784	36,676	41,592	45,595	48,655
15. Roadmotor Vehicles	652,770	1,068,837	1,687,109	122,343	145,910	184,376	133,467	175,884
16. Aircraft, Ship and Boats	789,762	169,209	462,611	11,418	153,182	170,550	13,182	38,666
17. Agricultural Machinery & Implements	37,686	73,780	141,427	20,083	9,623	9,964	2,874	15,272
Others	1,295,287	2,515,545	3,710,879	302,117	249,686	381,274	314,695	331,632
C. Petroleum Group	3,166,551	3,999,701	6,674,869	487,281	491,308	605,641	620,945	720,136
18. Petroleum Products	1,401,419	1,850,890	2,880,918	202,512	176,449	285,764	321,271	394,141
19. Petroleum Crude	1,765,132	2,148,811	3,793,951	284,769	314,859	319,877	299,674	325,995
D. Textile Group	260,482	317,245	545,806	48,341	34,109	41,323	37,996	50,002
20. Synthetic Fibre	106,115	146,853	260,742	24,388	18,119	19,824	19,767	23,746
21. Synthetic & Artificial Silk Yarn	117,997	130,192	237,350	19,937	13,216	17,698	14,425	21,670
22. Worn Clothing	36,370	40,200	47,714	4,016	2,774	3,801	3,804	4,586
E. Agri. & Other Chemical Group	2,797,708	3,604,693	4,182,949	320,639	264,266	307,430	256,133	319,463
23. Fertilizer Manufactured	284,714	416,947	681,666	45,458	4,010	31,185	10,895	47,074
24. Insecticides	124,109	139,734	113,762	3,909	2,816	6,440	6,363	7,990
25. Plastic Material	549,336	792,917	1,020,150	89,302	85,399	76,130	73,497	81,060
26. Medicinal Products	274,612	292,151	335,624	20,268	25,041	34,696	23,801	30,101
Others	1,564,937	1,962,944	2,031,747	161,702	147,000	158,979	141,577	153,238
F. Metal Group	687,734	1,218,342	1,852,740	156,988	160,436	255,275	113,256	151,507
27. Iron And Steel Scrap	93,599	222,061	363,238	28,348	35,985	113,577	25,369	29,922
28. Iron And Steel	512,009	890,167	1,367,137	119,707	115,469	128,968	76,023	111,464
29. Aluminum Wrought & Worked	82,126	106,114	122,365	8,933	8,982	12,730	11,864	10,121
G. Miscellaneous Group	378,303	482,867	596,176	50,314	44,258	52,310	37,775	53,591
30. Rubber Crude Incl. Synth/Reclaimed	68,220	85,971	104,051	9,070	6,134	9,438	8,507	8,312
31. Rubber Tyres & Tubes	89,038	133,836	155,331	12,333	11,457	10,152	13,630	12,434
32. Wood & Cork	25,782	28,929	37,580	2,443	2,903	2,862	2,747	3,681
33. Jute	30,888	195,091	256,807	8,881	4,843	3,613	4,384	492
34. Paper & Paper Board & Manuf. thereof	164,375	39,040	42,407	17,587	18,921	26,245	8,507	28,672
H. Others	3,047,336	3,648,273	4,341,805	304,893	356,090	283,501	332,609	404,499
TOTAL	15,591,776	20,598,114	28,580,879	2,144,331	2,210,421	2,681,903	2,258,646	2,648,397

1. Excluding re-imports

4.16 Imports¹ by Selected Commodities

(b) Federal Bureau of Statistics

(Thousand US Dollars)

COMMODITY	2006							2007
	Jun.	Jul.	Aug.	Sep.	Oct. ^P	Nov. ^P	Dec. ^P	Jan. ^P
A. Food Group	291,691	223,461	187,162	192,136	174,088	156,912	111,386	124,742
1. Milk & Cream Incl. Milk Food for Infants	5,675	5,289	8,760	4,839	3,565	6,323	7,013	7,195
2. Wheat Unmilled	1,397	0	8,899	0	17,344	6,389	0	0
3. Dry Fruits	4,816	2,989	4,667	5,861	3,664	6,159	5,108	5,963
4. Tea	21,609	16,405	21,877	15,710	17,856	18,113	21,055	18,808
5. Spices	4,334	4,618	5,491	5,268	4,687	4,611	3,597	3,663
6. Soya bean Oil	588	1,530	79	4,314	281	9,633	4,254	542
7. Palm Oil	74,325	60,205	54,752	79,249	84,824	83,388	49,649	61,714
8. Sugar	153,823	107,222	57,479	49,884	26,767	1,861	772	2,365
9. Pulses	25,124	25,203	25,158	27,011	15,100	20,435	19,938	24,492
B. Machinery Group	902,812	637,896	682,558	661,245	469,569	621,521	584,584	535,893
10. Power Generating Machine	49,568	60,284	58,757	79,726	39,062	42,204	112,404	44,499
11. Office Machine Including Data Processing Equipment	29,145	24,938	32,642	23,257	20,777	29,080	25,161	19,794
12. Textile Machinery	96,410	48,590	61,450	44,656	39,112	47,029	39,844	38,553
13. Construction & Mining Machinery	17,539	13,726	15,525	18,147	9,308	11,543	16,949	16,163
14. Electrical Machinery & Apparatus	65,264	36,385	58,648	46,418	38,550	67,069	54,379	52,400
15. Roadmotor Vehicles	201,402	104,660	126,073	116,051	79,098	129,545	99,954	111,584
16. Aircraft, Ship and Boats	12,648	17,667	28,354	22,967	8,070	26,956	188,396	68,399
17. Agricultural Machinery & Implements	12,937	7,545	9,983	11,758	13,681	21,539	13,697	27,136
Others	417,899	324,101	291,126	298,265	221,911	246,556	33,800	157,365
C. Petroleum Group	703,228	732,984	705,441	632,059	556,374	654,507	438,249	465,932
18. Petroleum Products	316,537	396,337	395,252	311,899	262,823	299,614	224,758	216,351
19. Petroleum Crude	386,691	336,647	310,189	320,160	293,551	354,893	213,491	249,581
D. Textile Group	58,169	46,674	52,307	48,286	36,537	37,462	40,155	39,571
20. Synthetic Fibre	31,144	22,621	23,217	22,377	15,364	15,347	16,407	17,527
21. Synthetic & Artificial Silk Yarn	22,093	19,646	24,650	21,153	16,552	16,615	20,053	17,806
22. Worn Clothing	4,932	4,407	4,440	4,756	4,621	5,500	3,695	4,238
E. Agri. & Other Chemical Group	408,013	321,281	346,983	343,294	325,748	363,143	378,975	351,244
23. Fertilizer Manufactured	80,101	54,856	16,820	44,551	15,463	40,492	61,539	15,950
24. Insecticides	10,727	12,204	17,321	6,880	5,066	5,994	6,257	4,977
25. Plastic Material	99,962	73,912	100,239	111,425	79,065	81,972	107,657	95,585
26. Medicinal Products	30,949	25,779	32,241	32,891	25,645	32,209	39,203	38,241
Others	186,274	154,530	180,362	147,547	200,509	202,476	164,319	196,491
F. Metal Group	175,212	125,867	139,692	124,298	109,126	151,182	156,748	119,238
27. Iron And Steel Scrap	33,318	26,241	27,127	23,673	13,691	21,753	20,316	21,699
28. Iron And Steel	129,977	86,903	95,710	85,075	84,461	113,637	121,864	84,267
29. Aluminum Wrought & Worked	11,917	12,723	16,855	15,550	10,974	15,792	14,568	13,272
G. Miscellaneous Group	56,819	46,243	47,142	65,767	46,010	55,279	52,095	51,233
30. Rubber Crude Incl. Synth/Reclaimed	9,607	8,243	9,396	11,924	8,763	9,567	7,194	8,755
31. Rubber Tyres & Tubes	12,968	10,927	14,309	14,739	12,113	14,030	13,385	11,925
32. Wood & Cork	4,099	3,122	3,612	3,611	2,360	4,545	2,841	2,727
33. Jute	25,497	2,214	776	2,182	5,644	3,919	5,288	6,045
34. Paper & Paper Board & Manuf. thereof	4,648	21,737	19,049	33,311	17,130	23,218	23,387	21,781
H. Others	390,321	325,531	362,342	375,247	414,210	733,548	802,001	642,235
TOTAL	2,986,265	2,459,937	2,523,627	2,442,332	2,131,662	2,773,554	2,564,193	2,330,088

Source : Federal Bureau of Statistics

4.17 Exports By Selected Countries / Territories

(a) State Bank of Pakistan

(Thousand US Dollar)

COUNTRY / TERRITORY	2003-04	2004-05	2005-06	2005	2006			
				Dec	Jan	Feb	Mar	Apr
A. North America	2,937,691	3,346,410	3,890,496	325,873	302,303	282,657	328,181	319,496
Canada	173,312	190,526	202,247	16,753	13,669	13,529	16,790	15,376
U. S. A.	2,763,516	3,154,005	3,687,458	308,931	288,496	269,103	311,360	304,034
Others	864	1,879	791	189	138	24	32	86
B- Central/Latin America	108,253	134,826	126,849	11,885	10,084	9,574	9,913	12,010
C-South America	97,222	133,248	158,362	14,541	12,140	13,507	14,104	13,838
Argentina	19,662	26,504	33,996	3,175	2,280	2,794	3,144	3,226
Brazil	5,611	8,257	15,661	910	1,260	1,755	925	2,140
Chile	45,184	54,158	59,062	5,785	4,798	4,732	5,524	3,930
Others	26,765	44,330	49,643	4,671	3,802	4,226	4,512	4,543
D-Europe	3,716,832	4,306,671	4,324,727	355,222	343,297	329,058	386,375	357,140
Austria	24,830	29,422	41,302	1,862	2,109	8,645	2,917	4,724
Belgium	241,515	290,982	269,729	21,721	22,201	21,022	21,065	22,736
Denmark	47,346	49,759	52,289	3,738	3,494	5,152	5,112	4,472
France	348,334	399,595	364,709	32,231	29,065	27,006	31,287	25,251
Germany	643,266	665,390	682,205	56,180	55,252	50,926	64,911	56,223
Italy	425,685	538,588	521,183	39,892	40,189	38,106	48,215	39,862
Netherlands	276,731	280,612	317,888	27,089	22,796	28,780	28,003	32,293
Norway	28,118	35,549	57,026	3,785	4,000	5,989	4,838	6,538
Spain	287,943	322,918	379,036	30,102	34,014	28,504	33,371	26,921
Sweden	66,059	81,856	94,290	6,465	7,414	7,968	8,438	7,647
Switzerland	51,386	92,192	97,467	8,996	4,758	6,707	5,774	15,081
U. K.	893,219	1,035,073	899,069	79,186	64,824	61,019	74,291	71,198
Russian Federation	21,388	45,046	67,674	7,120	4,906	7,564	10,873	7,264
Others	361,014	439,689	480,861	36,855	48,275	31,669	47,280	36,929
E-Africa	486,226	595,390	746,311	67,914	65,844	71,297	78,324	76,456
F-Asia	4,431,156	5,238,863	5,838,203	529,194	468,111	443,327	602,886	510,725
Afghanistan	403,156	732,181	831,557	68,622	55,884	67,873	96,637	79,465
Bahrain	37,541	45,849	44,416	3,740	2,450	3,268	4,697	2,935
Bangladesh	155,629	203,971	229,287	19,621	19,218	19,405	19,942	25,330
China	255,595	281,982	412,213	34,398	28,254	29,671	36,890	38,590
Hong Kong	638,929	648,729	718,719	64,991	55,645	52,690	66,399	60,376
Iran	55,218	116,188	174,322	17,198	11,540	16,690	20,914	8,531
India	84,338	190,399	263,726	28,490	13,585	10,712	29,088	43,004
Indonesia	54,353	63,665	62,985	7,551	5,356	5,002	6,430	5,704
Japan	141,401	159,582	163,146	13,514	20,235	13,984	12,147	10,819
Kuwait	72,057	77,284	80,138	8,651	5,445	6,046	8,010	6,084
Malaysia	75,563	66,925	63,079	6,370	4,536	4,754	6,623	5,426
Saudi Arabia	364,707	359,490	322,443	29,728	27,472	23,565	37,337	24,039
Singapore	121,888	93,339	66,964	4,462	3,504	3,458	5,862	5,691
South Korea	209,908	205,516	191,039	21,292	14,419	13,371	17,103	15,174
Sri Lanka	86,823	142,753	132,895	13,130	13,546	12,800	12,367	11,163
Thailand	41,263	58,094	68,384	4,387	6,338	3,795	8,778	6,725
Turkey	203,811	231,667	288,646	25,434	24,018	22,416	28,549	25,368
U. A. E.	1,082,598	1,100,129	1,298,413	122,878	122,508	101,297	140,732	97,087
Others	346,379	461,123	425,833	34,738	34,158	32,532	44,382	39,213
G-Oceania	162,990	159,836	161,797	14,292	13,570	13,363	15,355	16,339
Australia	122,211	120,106	122,250	11,289	10,571	10,384	11,326	13,056
New Zealand	36,936	36,279	35,808	2,662	2,533	2,785	3,688	3,093
Others	3,844	3,450	3,739	341	467	194	340	190
H- All Others	74,912	78,110	63,788	6,471	4,862	5,223	6,862	6,158
Export Receipts (Banks)	12,015,283	13,993,354	15,310,534	1,325,393	1,220,212	1,168,006	1,442,001	1,312,162
Export Other than Bank	380,717	407,146	1,077,366	114,907	37,188	123,694	94,399	137,938
Total Export	12,396,000	14,400,500	16,387,900	1,440,300	1,257,400	1,291,700	1,536,400	1,450,100

4.17 Exports By Selected Countries / Territories

(a) State Bank of Pakistan

(Thousand US Dollar)

COUNTRY / TERRITORY	2006							
	May	Jun	Jul	Aug	Sep	Oct ^P	Nov ^P	Dec ^P
A. North America	339,835	377,613	352,401	373,214	365,748	350,621	336,987	330,089
Canada	18,628	18,101	17,001	18,668	19,291	16,990	20,022	15,985
U. S. A.	321,175	359,510	335,298	354,544	346,385	333,583	316,904	314,102
Others	32	3	102	3	72	48	61	2
B- Central/Latin America	10,605	12,368	12,202	15,011	13,650	13,796	14,444	14,894
C-South America	15,410	14,309	14,837	17,444	16,190	18,983	18,479	18,822
Argentina	4,241	2,475	2,625	3,295	3,088	2,945	2,913	2,827
Brazil	1,876	1,677	1,433	1,932	1,737	2,886	2,610	2,912
Chile	5,503	5,434	5,662	5,469	4,818	6,318	5,868	5,880
Others	3,789	4,723	5,117	6,749	6,547	6,834	7,087	7,203
D-Europe	394,059	409,037	350,311	393,703	381,444	374,618	364,959	378,853
Austria	6,737	3,305	2,883	2,766	2,425	2,250	2,398	2,789
Belgium	21,679	23,856	20,330	24,860	23,503	22,386	22,761	24,977
Denmark	3,899	5,487	4,703	4,931	4,154	5,165	4,101	5,834
France	29,139	32,456	29,308	33,654	33,443	30,148	32,113	30,681
Germany	60,018	58,570	53,176	57,533	55,347	53,096	51,032	50,132
Italy	52,042	51,564	43,473	49,777	48,747	49,028	46,477	48,752
Netherlands	31,054	30,860	27,238	32,772	27,589	27,281	29,835	23,031
Norway	5,860	4,161	3,432	5,614	3,127	3,541	3,579	3,841
Spain	31,834	33,555	31,485	36,716	37,734	30,751	34,180	34,890
Sweden	8,185	8,806	7,464	8,192	8,994	6,368	6,769	6,730
Switzerland	11,329	17,099	6,772	6,079	4,375	19,525	8,878	8,803
U. K.	79,202	91,233	74,640	81,523	86,192	77,616	76,414	80,733
Russian Federation	4,736	5,293	3,349	6,240	4,145	4,981	5,855	8,907
Others	48,345	42,793	42,059	43,047	41,670	42,483	40,567	48,753
E-Africa	87,369	68,568	58,870	70,182	57,066	50,637	75,149	59,178
F-Asia	505,373	529,254	451,404	508,682	477,683	389,255	518,124	519,418
Afghanistan	75,325	65,060	65,118	73,012	59,997	42,548	61,707	52,569
Bahrain	4,441	3,889	3,984	3,384	4,605	3,164	2,892	5,007
Bangladesh	21,775	18,517	20,130	22,080	23,051	14,854	23,202	24,958
China	41,411	46,859	37,072	43,538	38,468	37,040	44,415	44,568
Hong Kong	61,529	78,254	64,879	73,582	63,486	56,156	64,870	66,266
Iran	20,650	15,625	9,774	22,481	20,975	18,666	19,694	13,048
India	17,284	21,394	12,377	10,921	12,890	12,739	29,972	42,036
Indonesia	5,335	5,021	3,595	3,051	4,818	3,783	6,011	6,365
Japan	10,516	10,184	8,982	10,082	12,370	9,810	10,841	15,870
Kuwait	6,475	7,266	5,841	6,324	6,350	5,960	6,910	7,720
Malaysia	5,331	5,740	4,652	4,148	5,647	3,437	4,151	6,139
Saudi Arabia	24,493	26,037	18,398	23,429	24,648	22,512	26,350	34,752
Singapore	3,244	13,268	2,270	15,799	12,268	3,000	4,197	5,278
South Korea	16,070	18,493	14,821	14,089	14,525	14,544	16,429	16,832
Sri Lanka	11,832	12,342	12,391	10,832	11,824	11,239	12,163	20,776
Thailand	6,949	5,763	4,203	4,445	3,258	3,690	4,869	5,348
Turkey	21,555	23,762	25,242	25,815	28,484	20,599	30,107	33,736
U. A. E.	114,121	105,833	101,367	98,106	94,312	79,259	107,403	76,657
Others	37,038	45,947	36,309	43,564	35,705	26,254	41,943	41,494
G-Oceania	13,149	13,340	10,489	13,211	12,801	12,068	13,557	13,923
Australia	10,145	9,989	8,222	10,506	9,963	9,115	9,118	10,817
New Zealand	2,817	3,019	2,189	2,477	2,457	2,779	2,834	2,919
Others	187	332	78	228	381	175	1,605	187
H- All Others	7,053	5,881	4,275	3,379	3,233	3,074	4,066	5,948
Export Receipts (Banks)	1,372,852	1,430,370	1,254,788	1,394,826	1,327,816	1,213,051	1,345,765	1,341,123
Export Other than Bank	153,948	102,930	78,912	-2,826	64,284	74,549	102,235	191,177
Total Export	1,526,800	1,533,300	1,333,700	1,392,000	1,392,100	1,287,600	1,448,000	1,532,300

Source: Statistics & Data Warehouse Department, SBP

4.17 Exports¹ by Selected Countries / Territories

(b) Federal Bureau of Statistics

(Million Rupees)

COUNTRY/ TERRITORY	2003-04	2004-05	2005-06	2005			
				Sep.	Oct.	Nov.	Dec.
TOTAL	709,036.1	854,087.7	984,840.6	88,641.3	79,118.3	66,546.4	87,040.2
A. North America	179,981.0	215,948.4	263,527.9	24,468.5	22,098.0	16,551.2	22,111.1
Canada	10,459.5	11,511.1	12,510.4	1,176.4	1,201.0	783.6	956.1
USA	169,512.0	204,425.5	250,989.8	23,292.2	20,897.0	15,766.1	21,152.2
Others	9.5	11.8	27.7	0.0	0.0	1.5	2.8
B. Central/Latin America	6,479.0	7,782.0	9,015.1	648.7	652.7	548.9	771.0
C. South America	5,326.8	7,939.8	10,150.8	818.4	796.5	628.8	848.0
Argentina	1,276.5	1,690.8	2,238.4	205.5	182.1	183.2	215.8
Brazil	289.0	536.0	1,162.0	45.3	98.7	59.8	101.3
Chile	2,309.9	2,937.2	3,509.4	259.9	266.4	215.4	289.1
Others	1,451.4	2,775.8	3,241.0	307.7	249.3	170.5	241.8
D. Europe	220,129.6	250,462.0	266,527.1	26,686.8	21,112.4	17,987.9	21,814.0
Austria	1,402.4	1,752.1	1,889.2	143.4	147.1	85.7	214.5
Belgium	15,108.7	18,566.8	19,265.8	2,653.6	1,623.2	1,319.4	1,404.3
Denmark	2,607.5	2,808.9	3,264.8	275.1	251.8	235.4	263.9
France	19,502.0	21,809.3	20,155.4	1,799.6	1,732.2	1,711.2	1,776.2
Germany	34,927.4	40,862.2	41,141.6	4,253.2	3,138.6	2,578.1	3,489.9
Italy	26,147.0	34,920.3	35,045.2	3,292.6	2,502.5	2,403.1	2,452.7
Netherlands	19,296.0	20,477.2	23,889.4	2,351.6	1,609.4	1,585.2	2,094.7
Norway	1,573.0	2,288.5	3,629.7	892.7	254.8	222.2	197.8
Spain	17,355.6	20,232.4	24,875.6	2,124.4	1,751.4	1,681.1	2,397.5
Sweden	4,118.7	4,675.3	5,687.7	382.3	476.9	433.9	545.6
Switzerland	1,806.3	1,837.7	2,189.0	87.7	100.0	220.8	233.9
UK	54,173.6	52,992.7	53,529.8	5,589.7	4,946.3	3,401.7	4,093.7
Russian Federation	1,179.5	2,606.9	3,137.4	201.4	297.7	283.2	261.0
Others	20,932.0	24,631.7	28,826.4	2,639.4	2,280.5	1,827.0	2,388.2
E. Africa	30,836.6	47,591.7	56,920.5	4,064.2	3,456.6	4,025.7	6,832.3
F. Asia	256,584.9	315,076.5	368,821.8	30,941.7	30,136.5	26,048.9	33,677.1
Afghanistan	28,393.5	44,393.3	63,671.4	5,052.6	4,530.2	3,858.9	5,395.7
Bahrain	2,189.7	2,517.4	2,744.3	234.6	202.8	159.4	216.3
Bangladesh	11,225.8	12,226.3	16,074.5	1,226.5	1,331.1	1,265.1	1,672.8
China	16,588.3	21,026.9	27,773.1	1,971.9	2,488.3	2,396.4	2,591.8
Hong Kong	33,511.1	33,120.6	40,659.8	2,882.7	3,427.2	3,180.1	3,499.5
Iran	5,323.8	8,728.0	11,258.3	854.7	1,032.1	1,077.3	1,120.7
India	5,397.6	17,125.6	17,557.5	918.6	1,607.5	1,244.7	1,230.2
Indonesia	2,563.3	4,187.7	3,474.3	301.4	257.7	216.0	255.8
Japan	7,758.9	9,757.9	7,668.0	670.6	755.0	677.3	705.1
Kuwait	4,135.5	4,717.2	4,345.4	358.6	345.0	322.4	597.8
Malaysia	4,804.0	3,890.7	3,829.7	331.0	297.6	318.7	316.8
Saudi Arabia	20,071.5	20,937.2	19,709.7	2,209.2	1,268.2	1,142.0	44.7
Singapore	6,738.2	3,378.6	2,275.6	109.2	147.8	95.2	188.0
South Korea	11,625.2	10,992.8	11,446.9	946.2	1,244.8	1,153.0	854.8
Sri Lanka	5,632.8	9,260.4	9,531.4	846.5	829.2	688.9	803.5
Thailand	3,641.9	4,578.4	4,043.1	370.7	243.3	210.2	588.7
Turkey	12,598.2	15,339.6	18,227.5	1,727.0	1,378.4	1,238.0	1,493.3
UAE	54,303.8	65,054.0	75,683.4	7,806.4	6,482.0	5,068.6	8,470.6
Others	20,081.8	23,843.8	28,847.9	2,123.3	2,268.3	1,736.5	3,631.1
G. Oceania	9,698.1	9,287.4	9,877.3	1,013.1	865.6	755.0	986.8
Australia	7,494.1	6,600.2	7,362.1	686.4	619.7	555.7	793.9
New Zealand	2,077.1	2,112.5	2,308.1	302.0	224.6	141.3	180.4
Others	127.0	574.7	207.1	24.7	21.3	58.0	12.4

4.17 Exports¹ by Selected Countries / Territories

(b) Federal Bureau of Statistics

(Million Rupees)

COUNTRY / TERRITORY	2006								
	Jan.	Feb.	Mar.	Apr.	May	Jun.	Jul.	Aug.	Sep.
TOTAL	73,284.4	73,596.4	90,783.8	86,590.9	89,147.3	90,849.4	80,883.9	90,389.3	85,478.9
A. North America	18,926.1	18,090.0	21,620.5	21,920.8	24,469.9	27,220.7	24,503.6	26,941.6	24,931.7
Canada	856.1	822.4	980.9	1,062.9	1,094.8	1,302.4	1,227.9	1,222.7	1,111.4
USA	18,069.3	17,267.1	20,639.0	20,857.9	23,370.2	25,905.9	23,275.5	25,718.8	23,817.9
Others	0.7	0.5	0.6	0.0	4.9	12.4	0.2	0.0	2.4
B. Central/Latin America	732.9	587.2	897.7	1,187.1	878.7	870.4	911.7	1,003.9	1,037.4
C. South America	737.3	674.0	945.6	830.9	1,072.6	1,183.6	1,024.8	1,151.3	1,104.7
Argentina	141.0	127.6	206.0	158.2	189.5	217.9	213.1	193.5	221.6
Brazil	115.6	94.1	174.7	103.1	163.9	103.4	92.6	165.2	185.4
Chile	266.7	244.2	298.1	319.2	389.9	400.1	311.0	348.5	272.5
Others	214.1	208.1	266.8	250.5	329.3	462.2	408.0	444.1	425.1
D. Europe	20,077.0	19,577.5	24,221.1	23,434.3	23,605.5	23,995.8	22,283.4	24,323.8	23,057.2
Austria	114.7	100.7	156.3	200.5	313.6	152.6	100.8	179.4	140.7
Belgium	1,381.8	1,279.7	1,517.4	1,466.4	1,751.3	1,662.5	1,541.7	1,982.8	1,989.7
Denmark	279.0	246.3	301.4	265.3	322.2	302.8	340.1	375.9	360.6
France	1,369.5	1,283.8	1,708.8	1,570.2	1,809.3	1,786.0	1,661.5	1,821.4	1,980.6
Germany	2,925.0	2,969.7	3,549.7	3,598.3	3,469.8	3,441.8	3,595.6	3,805.5	3,163.7
Italy	2,775.0	2,798.4	3,711.9	3,394.5	3,392.6	3,406.5	2,495.0	2,900.6	2,738.6
Netherlands	2,114.6	1,766.5	2,147.0	2,435.0	1,700.7	2,451.8	2,236.6	1,870.8	2,078.5
Norway	243.6	183.1	230.2	257.1	247.4	242.9	256.3	204.6	266.8
Spain	1,907.7	1,739.6	2,054.5	1,883.0	2,325.8	2,773.9	2,179.2	2,211.8	1,741.6
Sweden	531.5	455.0	467.8	462.3	608.3	485.0	426.0	422.9	353.6
Switzerland	113.8	129.777	155.6	384.5	219.7	213.1	98.0	120.8	93.0
UK	3,837.0	4,056.6	5,032.6	4,541.2	4,539.9	4,307.8	4,735.3	5,081.3	5,014.3
Russian Federation	361.7	456.5	290.2	253.1	178.4	164.4	224.8	360.0	313.8
Others	2,122.3	2,112.0	2,897.9	2,722.9	2,726.5	2,604.8	2,392.5	2,985.9	2,821.6
E. Africa	4,870.0	4,523.1	5,566.0	5,678.3	6,395.1	4,495.6	4,386.6	3,717.0	3,483.0
F. Asia	27,029.9	29,349.6	36,609.0	32,783.9	32,029.0	32,367.2	27,048.5	32,545.5	31,096.9
Afghanistan	3,990.4	5,297.2	6,900.9	6,854.9	6,053.3	5,405.3	5,384.6	5,479.0	4,984.8
Bahrain	166.9	232.9	257.3	290.8	280.4	256.7	204.1	223.3	179.7
Bangladesh	1,322.2	1,336.0	1,594.9	1,441.1	1,413.7	1,469.2	982.1	1,296.5	1,400.8
China	2,454.0	2,099.0	2,380.3	2,550.1	2,162.3	2,762.9	2,354.8	2,571.4	2,678.5
Hong Kong	3,406.7	3,313.1	3,985.1	3,440.9	3,566.7	3,672.2	3,205.0	3,881.5	3,180.3
Iran	923.1	1,197.6	1,059.9	1,251.3	962.3	641.9	568.1	822.5	1,109.3
India	615.1	854.9	1,897.3	2,652.9	897.2	1,754.6	677.5	1,757.2	1,212.0
Indonesia	317.8	232.3	328.9	305.0	250.3	352.4	272.1	304.9	252.5
Japan	671.4	512.3	701.6	502.8	645.8	485.4	638.5	723.1	731.7
Kuwait	277.8	341.7	370.4	327.1	308.3	366.9	301.9	421.2	469.4
Malaysia	223.9	277.5	335.4	375.3	337.2	352.3	287.0	248.5	246.3
Saudi Arabia	1,285.4	1,667.8	1,615.4	1,434.6	1,523.1	1,741.8	1,321.6	1,558.2	1,699.3
Singapore	197.7	171.5	300.3	240.5	251.9	202.8	166.4	140.8	168.4
South Korea	800.2	732.3	1,119.5	869.9	918.6	1,140.8	815.1	844.5	855.8
Sri Lanka	779.9	778.0	980.0	760.9	787.4	888.2	757.8	887.4	1,116.5
Thailand	573.1	270.4	220.1	290.9	429.9	268.7	204.6	239.5	286.6
Turkey	1,759.1	1,284.7	1,453.6	1,613.8	1,515.8	1,785.8	1,491.8	1,981.6	1,813.3
UAE	5,688.4	6,806.3	7,871.6	5,311.3	7,330.6	6,543.9	5,259.9	6,793.2	6,113.0
Others	1,576.8	1,944.1	3,236.4	2,269.6	2,394.2	2,275.4	2,155.6	2,371.2	2,598.9
G. Oceania	911.1	795.0	923.8	755.6	696.8	716.2	725.3	706.3	768.1
Australia	702.5	578.8	705.4	556.9	558.9	561.2	574.0	556.9	564.7
New Zealand	197.7	205.1	213.2	192.4	129.7	132.7	131.4	146.2	190.9
Others	10.9	11.1	5.2	6.3	8.2	22.4	19.9	3.1	12.5

1. Excluding re-exports

Source : Federal Bureau of Statistics

4.18 Imports By Selected Countries / Territories

(a) State Bank of Pakistan

(Thousand US Dollars)

COUNTRY / TERRITORY	2003-04	2004-05	2005-06	2005	2006				
				Dec	Jan	Feb	Mar	Apr	
A. North America	1,132,015	1,194,342	1,341,638	88,056	76,879	84,238	123,157	85,117	
Canada	155,637	135,224	231,470	30,465	11,939	8,960	19,386	33,945	
U. S. A.	974,812	1,057,736	1,107,593	57,497	64,798	75,227	103,574	51,172	
Others	1,566	1,382	2,575	95	141	51	198	0	
B- Central/Latin America	30,042	37,332	19,390	964	1,419	1,636	1,069	1,783	
C-South America	56,509	99,231	204,610	16,087	12,942	10,308	11,516	6,053	
Argentina	18,936	23,216	22,660	754	1,950	1,939	1,918	1,436	
Brazil	24,476	64,432	161,509	15,117	8,149	5,650	6,724	3,994	
Chile	6,256	2,204	1,179	46	102	257	65	14	
Others	6,841	9,379	19,262	170	2,741	2,463	2,808	609	
D-Europe	2,991,387	4,447,043	6,137,839	589,526	537,956	448,393	527,117	396,310	
Austria	43,803	79,114	133,373	9,487	9,835	9,430	15,043	8,761	
Belgium	156,033	202,442	298,122	31,892	20,355	29,164	19,518	18,125	
Denmark	45,353	77,959	212,063	19,313	28,417	13,195	10,333	4,982	
France	295,247	460,001	560,467	67,242	55,307	42,241	37,040	21,052	
Germany	618,282	873,879	1,135,509	91,936	82,312	75,946	117,762	75,082	
Italy	261,970	350,801	406,599	33,751	36,543	35,508	37,993	40,002	
Netherlands	188,938	190,797	321,832	17,610	29,879	14,403	26,697	21,339	
Norway	6,823	11,661	7,123	1,089	390	722	859	294	
Spain	62,876	86,678	72,736	6,413	7,534	6,498	6,268	5,311	
Sweden	90,896	155,143	271,222	23,589	26,690	25,080	21,779	25,750	
Switzerland	409,810	663,775	844,531	78,314	93,196	66,858	64,924	50,480	
U. K.	460,329	719,659	848,139	77,245	66,228	61,456	73,707	39,534	
Russian Federation	86,203	57,139	140,763	8,014	12,903	7,428	17,071	10,831	
Others	264,825	517,993	885,358	123,630	68,368	60,461	78,124	74,768	
E-Africa	405,259	496,384	627,486	86,042	49,827	48,033	53,220	51,004	
F-Asia	8,422,943	11,621,898	15,372,369	1,106,978	1,267,177	1,199,264	1,352,639	1,151,809	
Afghanistan	2,632	1,076	2,597	0	2	98	21	266	
Bahrain	45,648	68,649	65,192	1,989	2,412	3,219	4,091	2,925	
Bangladesh	38,279	47,305	51,019	6,127	6,544	4,310	4,063	4,775	
China	1,142,788	1,528,274	2,010,638	148,848	153,165	129,633	187,972	143,233	
Hong Kong	157,212	262,511	264,564	25,708	19,370	18,016	16,763	15,516	
Iran	146,790	100,890	253,034	41,928	38,913	31,442	20,224	33,778	
India	376,627	485,629	770,231	39,153	40,581	63,832	75,304	75,756	
Indonesia	223,332	325,883	405,787	30,683	45,594	32,110	28,193	24,195	
Japan	993,825	1,350,988	1,395,026	103,676	119,948	102,466	125,264	122,369	
Kuwait	797,192	1,135,835	1,428,536	134,742	102,071	175,036	28,194	117,947	
Malaysia	579,209	614,094	637,146	51,814	48,957	34,939	44,610	44,987	
Saudi Arabia	1,016,902	1,665,466	2,619,421	142,358	194,097	183,306	261,000	199,779	
Singapore	809,962	926,742	1,178,915	104,929	103,601	90,197	120,145	72,772	
South Korea	436,044	523,583	520,962	42,017	46,625	44,427	40,395	34,033	
Sri Lanka	42,004	43,886	59,285	4,907	4,850	4,181	5,692	5,303	
Thailand	236,729	313,126	459,586	41,020	40,976	39,317	40,638	30,851	
Turkey	87,367	112,270	145,577	11,323	10,842	21,972	11,038	8,537	
U. A. E.	1,148,197	1,910,791	2,851,636	150,766	254,244	204,966	320,245	198,155	
Others	142,202	204,901	253,216	24,989	34,386	15,796	18,787	16,633	
G-Oceania	254,898	453,709	248,670	20,750	25,676	18,110	35,269	18,481	
Australia	231,162	421,773	205,488	16,063	21,313	15,858	30,320	14,008	
New Zealand	21,076	29,149	40,449	3,270	4,147	2,185	4,899	4,421	
Others	2,660	2,786	2,733	1,417	216	68	50	52	
H- All Others	154,235	163,257	240,438	16,517	22,714	16,097	20,281	18,605	
Import Payments (Banks)	13,447,288	18,513,196	24,192,440	1,924,919	1,994,590	1,826,081	2,124,269	1,729,162	
Import other than Bank	156,712	239,804	453,973	4,189	42,022	28,111	144,787	-73,098	
Total Import	13,604,000	18,753,000	24,646,413	1,929,108	2,036,612	1,854,192	2,269,056	1,656,064	

4.18 Imports By Selected Countries / Territories

(a) State Bank of Pakistan

(Thousand US Dollar)

COUNTRY / TERRITORY	2006							
	May	Jun	Jul	Aug	Sep	Oct ^P	Nov ^P	Dec ^P
A. North America	96,097	124,540	67,174	90,526	89,346	111,059	147,786	94,276
Canada	21,690	48,891	11,016	14,670	23,328	34,333	24,581	14,593
U. S. A.	74,072	75,477	55,305	75,608	66,000	76,726	123,205	79,598
Others	335	173	853	248	18	0	0	85
B-Central/Latin America	2,293	1,431	1,593	1,759	1,602	1,439	1,684	1,615
C-South America	27,405	8,884	12,038	6,267	11,494	13,830	15,731	15,917
Argentina	4,427	1,272	1,793	1,611	1,842	940	438	1,479
Brazil	18,484	4,830	5,449	3,298	4,898	5,096	11,284	13,531
Chile	36	89	0	91	97	40	464	651
Others	4,458	2,693	4,796	1,267	4,656	7,754	3,544	255
D-Europe	474,202	714,009	564,048	417,938	547,850	408,942	531,548	514,965
Austria	8,802	16,868	8,530	10,569	5,508	7,126	8,101	10,358
Belgium	20,640	25,791	13,319	13,946	22,994	14,678	20,036	11,708
Denmark	17,260	6,608	3,715	6,066	7,022	8,098	5,992	5,542
France	29,425	42,250	39,774	31,535	61,888	30,819	64,140	35,188
Germany	77,673	133,280	100,167	108,355	152,884	57,969	89,411	121,527
Italy	41,798	44,714	35,129	49,932	30,984	37,031	36,818	36,337
Netherlands	23,968	90,284	77,728	25,115	28,519	16,115	27,141	35,757
Norway	559	861	145	406	449	748	2,324	408
Spain	5,851	6,086	7,403	5,769	6,303	7,734	6,141	6,043
Sweden	21,424	23,872	28,587	16,024	18,859	34,075	34,384	28,072
Switzerland	76,305	86,102	79,531	58,125	58,695	55,217	82,625	60,296
U. K.	75,229	81,477	69,900	50,731	73,466	56,387	64,184	75,591
Russian Federation	4,365	22,525	1,769	2,218	14,810	9,626	12,517	7,838
Others	70,903	133,292	98,352	39,147	65,470	73,318	77,734	80,302
E-Africa	44,218	53,012	52,846	71,109	46,670	45,679	65,763	50,622
F-Asia	1,584,718	1,589,788	1,647,129	1,650,357	1,475,707	1,552,329	1,404,209	1,397,338
Afghanistan	76	0	188	555	0	16	7	19
Bahrain	27,431	4,355	5,978	4,154	2,762	4,993	2,516	3,979
Bangladesh	851	4,496	1,198	1,615	2,874	6,348	3,330	6,624
China	171,248	176,953	163,354	187,688	170,837	147,904	181,009	227,779
Hong Kong	18,848	20,120	19,123	22,484	29,767	16,549	28,437	25,322
Iran	8,254	8,726	43,846	50,632	4,632	17,659	40,505	39,012
India	145,905	129,080	113,791	158,423	78,691	78,537	65,524	78,751
Indonesia	39,081	38,031	35,056	35,119	39,294	36,216	35,961	33,633
Japan	121,587	147,652	113,645	109,963	99,136	164,372	121,775	122,402
Kuwait	143,931	142,853	199,789	174,398	180,450	169,712	119,832	111,792
Malaysia	55,212	65,388	54,531	43,895	59,750	80,239	91,181	59,177
Saudi Arabia	323,067	318,140	319,878	379,736	299,290	308,594	238,513	227,318
Singapore	131,038	122,593	125,346	136,283	147,580	139,975	130,418	60,920
South Korea	44,373	42,842	40,144	49,667	47,206	34,734	43,850	57,802
Sri Lanka	5,402	5,686	9,500	6,639	5,668	4,998	5,030	5,193
Thailand	44,447	38,929	29,200	46,974	40,232	44,275	28,456	33,381
Turkey	9,512	11,687	10,495	18,407	11,319	9,335	13,830	13,648
U. A. E.	275,414	290,852	340,028	193,974	236,551	268,960	232,560	231,190
Others	19,042	21,406	22,038	29,749	19,666	18,911	21,473	59,396
G-Oceania	17,339	15,216	31,299	19,824	37,452	26,068	22,252	23,359
Australia	12,753	12,316	27,619	15,097	31,001	22,889	16,240	16,249
New Zealand	4,451	2,859	3,554	4,664	6,406	3,150	6,010	6,976
Others	135	41	126	63	44	28	2	134
H- All Others	21,130	46,452	21,035	18,915	21,865	19,324	19,094	18,325
Import Payments (Banks)	2,267,403	2,553,333	2,397,161	2,276,696	2,231,985	2,178,670	2,208,067	2,116,416
Import other than Bank	62,808	132,003	-14,961	-10,896	-60,185	-16,470	-86,967	84,984
Total Import	2,330,211	2,685,336	2,382,200	2,265,800	2,171,800	2,162,200	2,121,100	2,201,400

Source: Statistics & Data Warehouse Department, SBP

4.18 Imports¹ by Selected Countries / Territories

(b) Federal Bureau of Statistics

(Million Rupees)

COUNTRY / TERRITORY	2003-04	2004-05	2005-06	2005			
				Sep.	Oct.	Nov.	Dec.
TOTAL	897,824.6	1,223,079.1	1,711,158.4	138,747.9	138,846.1	137,400.3	148,006.1
A. North America	88,377.1	104,578.9	118,494.4	10,809.9	10,461.8	10,043.4	9,348.5
Canada	11,824.0	11,671.8	19,242.1	662.0	875.8	2,147.1	2,803.0
USA	76,513.2	92,813.5	99,219.8	10,147.4	9,576.7	7,893.8	6,543.0
Others	39.8	93.6	32.5	0.5	9.3	2.5	2.5
B. Central/Latin America	645.9	1,397.6	2,222.6	110.7	157.7	534.0	99.5
C. South America	4,910.0	13,522.0	24,053.7	3,604.0	3,925.5	3,101.3	3,475.9
Argentina	2,625.3	3,963.5	2,750.1	103.1	201.8	104.6	281.7
Brazil	1,931.4	8,650.6	19,922.4	3,150.3	3,654.6	2,941.1	3,134.9
Chile	164.3	124.4	164.1	76.8	7.9	5.2	29.4
Others	189.1	783.5	1,217.1	273.8	61.2	50.4	29.9
D. Europe	169,568.4	265,736.6	377,200.3	33,572.2	29,085.7	31,495.6	33,089.3
Austria	1,667.3	4,303.9	5,548.6	271.9	223.0	814.6	491.7
Belgium	15,078.7	10,511.4	21,136.9	1,554.3	1,824.5	2,208.2	1,615.8
Denmark	1,626.9	3,323.4	6,414.1	560.9	328.8	823.4	567.3
France	9,245.2	12,324.3	20,380.4	1,806.8	1,471.5	1,153.0	1,271.8
Italy	35,227.3	21,597.6	31,353.2	2,263.2	1,962.6	2,306.7	2,445.3
Germany	18,002.2	53,266.5	70,423.9	6,692.4	6,126.9	5,982.9	5,222.7
Netherlands	12,686.0	8,717.6	14,939.5	1,399.1	1,247.7	1,380.8	1,269.2
Norway	404.7	948.6	547.1	29.5	140.9	30.3	36.6
Spain	4,541.8	5,124.5	5,777.7	510.1	339.2	459.5	540.6
Sweden	3,878.7	11,949.7	27,553.5	1,505.0	1,342.5	1,998.1	3,759.0
Switzerland	19,013.1	25,123.4	28,230.6	2,796.5	1,509.3	2,100.6	1,883.4
UK	25,228.4	31,601.7	48,194.1	4,039.5	2,978.0	4,497.0	4,696.9
Russian Federation	7,730.2	16,604.3	27,490.5	2,966.7	2,456.8	2,934.5	2,973.7
Others	15,237.8	60,339.8	69,210.0	7,176.1	7,134.0	4,806.0	6,315.2
E. Africa	27,696.9	40,347.9	49,085.7	3,275.4	4,763.0	4,268.5	4,896.4
F. Asia	588,046.7	762,770.1	1,122,802.0	86,559.1	89,596.2	86,069.0	95,235.3
Afghanistan	2,731.8	2,314.0	2,842.9	508.7	73.9	365.2	95.6
Bahrain	4,282.7	3,475.9	3,229.7	394.1	310.1	119.9	218.3
Bangladesh	2,644.1	3,635.0	3,863.9	205.7	406.8	443.0	184.9
China	66,423.1	109,390.7	161,990.7	12,384.3	14,897.9	11,177.8	13,405.7
Hong Kong	8,416.2	5,618.9	9,799.6	602.0	579.7	1,414.1	842.0
Iran	16,349.1	14,374.7	26,942.1	2,938.6	2,450.2	2,022.1	3,664.5
India	22,003.8	32,487.7	48,071.6	2,000.4	1,835.7	2,560.0	3,778.1
Indonesia	20,592.9	34,131.1	45,379.1	4,222.9	3,815.9	2,797.7	3,949.7
Japan	53,913.0	86,045.9	110,175.4	6,481.2	7,579.1	10,342.5	9,809.7
Kuwait	57,061.9	55,810.4	101,934.9	8,736.0	9,609.3	64.2	6,165.9
Malaysia	34,697.0	40,265.7	42,405.4	3,488.8	4,324.3	3,221.4	3,841.0
Saudi Arabia	102,437.0	147,166.5	179,258.4	14,225.0	15,943.8	11,069.2	14,593.2
Singapore	28,291.6	22,172.0	27,735.4	1,823.7	2,279.7	2,093.5	2,348.4
South Korea	21,909.5	32,935.2	36,914.6	2,688.4	2,840.0	3,474.5	3,853.2
Sri Lanka	2,786.3	2,662.8	4,268.8	272.9	288.3	529.1	377.5
Thailand	15,498.6	24,578.7	38,924.1	2,933.8	2,797.2	94.0	3,629.7
Turkey	4,481.5	6,108.5	11,302.2	984.2	1,000.4	1,354.4	2,551.9
UAE	98,391.8	101,053.7	81,893.4	15,966.0	13,811.9	17,673.0	14,517.5
Others	25,134.9	38,542.7	185,869.9	5,702.3	4,752.06	15,253.4	7,408.6
G. Oceania	18,579.7	34,726.0	17,299.7	816.8	856.2	1,888.6	1,861.3
Australia	17,699.9	33,268.7	14,611.0	641.4	747.6	1,742.9	1,480.4
New Zealand	822.8	1,297.1	2,163.0	98.3	101.7	86.3	276.5
Others	57.0	160.2	525.6	77.0	6.9	59.5	104.4

4.18 Imports by Selected Countries / Territories

(b) Federal Bureau of Statistics

(Million Rupees)

COUNTRY / TERRITORY	2006								
	Jan.	Feb.	Mar.	Apr.	May	Jun.	Jul.	Aug.	Sep.
TOTAL	128,315.9	132,372.2	160,933.0	135,514.0	159,080.8	179,659.0	148,263.1	152,220.1	147,770.2
A. North America	6,498.1	16,649.5	15,929.2	9,619.0	8,346.0	8,236.0	10,238.1	7,466.4	8,012.8
Canada	1,463.1	1,958.7	1,116.7	2,549.7	2,490.2	1,770.1	3,355.9	1,211.0	1,388.1
USA	5,034.9	14,690.7	14,808.2	7,068.8	5,854.8	6,457.0	6,836.4	6,254.4	6,622.9
Others	0.1	0.0	4.2	0.5	0.9	8.9	45.8	0.9	1.8
B. Central/Latin America	139.2	388.1	195.1	117.9	60.3	198.2	299.2	136.6	220.7
C. South America	1,538.6	970.4	1,446.4	965.7	2,080.1	1,293.8	625.0	825.0	2,295.7
Argentina	320.8	214.7	248.0	263.3	367.6	277.0	314.6	391.2	245.3
Brazil	1,184.4	694.1	1,128.8	599.6	1,546.5	735.6	248.1	340.5	1,999.8
Chile	5.2	2.5	3.0	0.5	1.1	13.3	1.3	5.2	5.0
Others	28.2	59.0	66.6	102.2	164.9	267.9	61.0	88.1	45.7
D. Europe	31,570.8	24,207.0	34,106.2	26,212.3	34,528.0	39,277.4	28,858.9	29,162.4	30,565.1
Austria	329.2	334.6	244.7	475.6	566.2	656.7	342.9	722.9	404.3
Belgium	1,213.8	1,642.4	2,004.8	1,351.2	1,954.2	2,216.3	1,447.3	1,466.0	1,634.9
Denmark	898.9	315.3	310.6	313.9	384.6	370.1	232.6	314.4	447.3
France	2,309.1	1,605.7	1,810.3	1,707.8	2,367.2	1,295.3	2,099.4	1,606.7	1,415.5
Italy	2,290.5	2,466.3	3,268.5	2,717.8	2,968.8	3,796.0	2,374.6	2,716.2	2,420.6
Germany	5,738.6	4,131.7	6,723.3	4,185.0	6,943.9	6,388.7	7,207.3	5,678.3	6,358.8
Netherlands	1,450.2	841.7	1,068.8	1,170.2	1,326.6	1,400.0	1,037.6	2,374.7	1,109.2
Norway	60.4	54.7	31.2	20.4	23.2	40.0	38.4	52.8	67.4
Spain	397.6	418.6	595.6	477.6	413.0	660.5	556.9	548.2	440.6
Sweden	2,490.8	1,225.6	2,989.4	3,627.7	1,307.2	2,729.3	1,480.0	1,657.9	1,778.3
Switzerland	1,643.2	1,543.7	2,089.4	2,070.5	4,130.3	2,218.5	2,067.9	2,119.2	1,698.2
UK	3,876.7	3,727.4	3,941.8	3,076.8	3,784.6	5,821.9	3,332.6	3,965.8	3,799.7
Russian Federation	3,037.7	2,083.5	2,932.3	1,295.3	1,505.5	2,939.3	891.0	1,515.3	2,464.0
Others	5,834.0	3,815.8	6,095.5	3,722.5	6,852.7	8,744.8	5,750.4	4,424.1	6,526.3
E. Africa	3,672.5	3,722.6	4,127.9	3,613.0	4,493.4	4,237.6	2,852.1	3,799.2	3,346.5
F. Asia	82,917.7	84,060.2	104,239.0	94,224.3	107,619.6	125,099.6	103,596.9	108,936.3	100,851.9
Afghanistan	150.0	215.1	181.142	178.626	109.2	221.0	284.5	425.1	595.6
Bahrain	259.1	212.7	275.7	396.8	276.6	315.8	245.2	4,917.3	169.1
Bangladesh	611.2	359.0	342.7	316.0	80.4	306.2	77.7	83.0	200.3
China	11,912.0	13,321.9	13,992.2	11,131.3	14,344.0	17,785.6	14,736.3	16,722.1	14,233.5
Hong Kong	814.1	804.4	719.3	795.3	855.6	1,060.0	1,072.5	784.7	738.1
Iran	3,593.1	1,485.2	2,676.8	996.7	1,691.7	3,540.1	3,105.9	1,170.8	1,432.2
India	3,699.4	3,928.5	4,408.1	6,897.4	4,925.3	9,976.1	8,670.6	6,074.7	3,352.0
Indonesia	3,784.3	3,599.6	4,423.3	3,064.5	3,496.9	4,760.4	3,420.6	4,058.6	5,437.4
Japan	7,091.6	8,087.2	11,107.0	10,006.9	10,809.5	13,063.1	7,554.7	9,545.4	8,257.2
Kuwait	6,812.2	7,279.0	11,855.1	8,846.9	11,369.7	10,451.6	12,132.2	10,271.6	7,377.9
Malaysia	3,450.5	2,612.5	2,719.8	2,713.4	3,224.4	4,936.4	3,902.2	3,821.5	3,566.0
Saudi Arabia	13,319.9	13,459.0	13,145.4	16,227.8	17,593.0	20,364.3	15,680.9	7,997.6	19,585.1
Singapore	2,061.2	2,198.9	2,985.2	2,483.1	2,278.7	3,116.0	2,408.6	3,297.0	3,222.5
South Korea	2,854.1	2,684.7	3,494.0	2,858.4	2,923.3	3,578.2	2,616.4	3,422.8	3,312.4
Sri Lanka	246.2	337.0	385.8	304.2	321.1	636.1	255.8	393.4	431.7
Thailand	3,252.0	2,678.0	4,503.4	2,398.3	3,615.1	3,944.7	2,380.1	2,863.8	3,014.4
Turkey	872.8	681.6	681.4	594.8	689.0	574.4	595.1	794.9	549.0
UAE	14,816.3	14,294.0	21,427.1	18,992.2	23,393.6	19,712.5	17,885.5	12,633.9	18,751.0
Others	3,317.6	5,821.8	4,915.8	5,021.6	5,622.5	6,757.0	6,572.1	19,658.1	6,626.6
G. Oceania	1,979.0	2,374.4	889.3	761.8	1,953.5	1,316.5	1,792.9	1,894.2	2,477.3
Australia	1,703.2	2,280.7	739.5	415.4	1,552.4	1,107.3	1,621.7	1,557.6	2,215.4
New Zealand	242.8	92.1	147.4	247.6	395.2	199.7	164.6	335.0	242.0
Others	33.1	1.6	2.5	98.8	5.9	9.5	6.6	1.7	19.9

1. Excluding re-imports

Source : Federal Bureau of Statistics

4.19 Terms of Trade and Indices of Unit Value-Exports by Groups (1990-91= 100)

PERIOD	Terms of Trade	EXPORTS								
		All Groups	Food and live Animals	Beverages and Tobacco	Crude Materials Inedible except Fuels	Mineral Fuels and Lubricants	Chemicals	Manu- factured Goods	Machinery and Trans- port Equipments	Misc. Manu- factured Articles
2001-02	90.83	271.18	260.55	169.82	158.90	314.40	281.54	281.83	579.13	298.40
2002-03	82.07	254.02	258.11	146.52	171.58	365.14	270.05	248.93	572.31	294.67
2003-04	78.68	279.65	267.55	175.33	218.86	416.09	265.61	274.02	396.09	318.55
2004-05	73.60	288.84	303.93	162.96	195.64	525.75	277.23	284.72	342.97	324.17
2005-06 ^P	65.01	299.31	327.47	191.13	209.97	644.33	312.89	289.58	414.01	342.71
2000-01										
Apr.-Jun.	92.49	283.04	259.60	214.77	202.87	381.55	314.34	292.92	563.26	298.75
2001-02										
Jul.-Sep.	87.44	284.15	274.29	160.80	191.48	370.40	284.07	295.48	578.84	298.47
Oct.-Dec.	93.81	269.67	252.08	187.56	157.76	280.98	284.90	281.56	383.22	300.57
Jan.-Mar.	94.83	264.26	256.80	173.25	142.93	276.65	271.82	275.27	661.58	295.39
Apr.-Jun.	87.95	266.62	259.04	157.65	143.43	329.56	285.35	275.00	692.88	299.16
2002-03										
Jul.-Sep.	84.81	251.66	267.68	112.02	151.47	338.39	265.96	241.53	698.97	311.72
Oct.-Dec.	79.13	243.48	253.62	205.57	154.46	355.50	268.71	245.18	499.60	263.33
Jan.-Mar.	78.33	252.04	254.26	125.25	178.71	420.16	287.16	246.25	589.36	287.75
Apr.-Jun.	86.21	268.91	256.89	143.24	199.69	346.52	258.37	262.74	501.30	315.86
2003-04										
Jul.-Sep.	78.38	264.06	258.75	166.08	197.98	353.02	255.36	251.44	423.98	321.42
Oct.-Dec.	80.94	277.59	258.74	210.23	208.45	407.71	260.11	272.63	547.01	319.77
Jan.-Mar.	79.27	286.96	270.03	170.07	226.72	481.44	285.47	285.69	273.49	311.21
Apr.-Jun.	76.34	289.89	282.66	154.92	242.27	422.17	261.48	286.31	339.88	321.79
2004-05										
Jul.-Sep.	80.23	286.37	291.56	170.25	220.25	458.58	260.10	281.95	352.69	320.56
Oct.-Dec.	73.09	284.00	295.99	154.19	185.77	463.00	263.04	286.31	339.92	311.76
Jan.-Mar.	69.80	287.23	311.62	166.82	181.79	513.63	296.70	283.75	315.56	327.41
Apr.-Jun.	72.13	297.77	316.54	160.59	194.74	667.79	289.08	286.88	364.32	336.94
2005-06										
Jul.-Sep.	66.24	296.18	316.31	191.69	200.92	588.69	286.26	279.93	481.45	365.25
Oct.-Dec.	66.53	296.02	317.71	205.83	205.09	613.04	298.53	289.52	396.07	335.67
Jan.-Mar.	65.61	296.88	325.07	181.11	216.84	689.69	311.81	286.45	379.98	336.82
Apr.-Jun ^P	62.01	308.17	350.80	185.87	217.01	685.89	354.97	302.41	398.55	333.11

Source : Federal Bureau of Statistics

4.20 Indices Of Unit Value-Imports by Groups

(1990-91= 100)

IMPORTS										
PERIOD	All Groups	Food And live Animals	Beverages and Tobacco	Crude Materials inedible except Fuels	Mineral Fuels and Lubricants	Veg./ Animal Oils and Fats	Chemicals	Manu- factured Goods	Machinery and Trans- port Equipments	Misc. Manu- factured Articles
2001-02	298.56	277.41	790.14	228.14	249.66	224.82	239.29	244.97	481.18	320.35
2002-03	309.52	259.76	598.00	232.37	297.20	300.36	245.60	240.82	450.67	299.60
2003-04	355.43	282.18	521.88	245.01	306.38	247.94	313.15	287.80	537.55	333.22
2004-05	392.45	314.36	561.23	293.06	389.16	358.48	334.10	301.00	561.15	343.13
2005-06 ^P	460.38	323.95	621.67	329.71	615.00	341.40	372.17	340.71	538.14	414.94
2000-01										
Apr.-Jun.	306.01	275.85	704.63	228.11	286.66	197.25	227.14	278.11	486.13	282.91
2001-02										
Jul.-Sep.	324.97	283.15	899.35	235.36	287.41	216.67	240.28	258.78	554.66	256.70
Oct.-Dec.	287.45	266.29	844.75	224.77	222.73	199.43	239.18	240.47	471.43	402.94
Jan.-Mar.	278.67	275.92	776.71	228.80	220.27	237.78	233.66	241.63	432.22	267.34
Apr.-Jun.	303.15	284.28	639.74	223.64	268.24	245.41	244.02	239.01	466.42	354.40
2002-03										
Jul.-Sep.	296.72	274.66	504.97	231.55	303.72	262.29	237.74	233.25	411.36	245.38
Oct.-Dec.	307.70	271.56	725.31	224.48	274.19	286.18	244.49	235.46	476.13	330.57
Jan.-Mar.	321.75	239.10	554.64	239.31	315.37	315.95	235.40	249.01	489.03	328.41
Apr.-Jun.	311.91	253.72	607.08	234.13	295.50	337.03	264.76	245.55	426.14	294.04
2003-04										
Jul.-Sep.	336.90	247.98	562.77	235.64	282.66	328.30	282.38	253.60	546.84	285.70
Oct.-Dec.	342.95	265.16	557.92	243.89	286.64	323.29	307.38	257.37	538.92	355.79
Jan.-Mar.	362.01	311.64	477.87	245.58	304.18	341.91	309.44	367.24	518.72	346.81
Apr.-Jun.	379.84	303.94	488.96	254.92	352.02	398.27	353.41	272.97	545.72	344.59
2004-05										
Jul.-Sep.	356.95	310.52	477.86	265.36	336.06	382.71	287.15	264.76	518.37	320.14
Oct.-Dec.	388.56	282.46	561.16	290.47	355.62	363.04	341.56	308.46	581.88	311.52
Jan.-Mar.	411.48	319.89	608.51	300.91	397.15	350.73	329.72	325.55	630.79	371.44
Apr.-Jun.	412.81	344.56	597.38	315.49	467.82	337.45	377.96	305.22	513.57	369.42
2005-06										
Jul.-Sep.	447.11	293.75	607.86	318.56	578.65	335.13	382.22	318.09	541.58	425.33
Oct.-Dec.	444.91	295.63	654.70	342.85	579.20	350.21	359.99	338.46	529.56	381.04
Jan.-Mar.	452.48	296.02	634.99	327.97	608.09	350.64	361.74	346.00	520.54	362.25
Apr.-Jun ^P	497.00	410.39	589.13	329.44	694.07	329.61	384.72	360.30	560.89	491.14

Source : Federal Bureau of Statistics

4.21 Quantum Index Number of Exports by Groups (1990-91= 100)

EXPORTS									
PERIOD	All Groups	Food and live Animals	Beverages and Tobacco	Crude Materials inedible except Fuels	Mineral Fuels and Lubricants	Chemicals	Manu- factured Goods	Machinery and Trans- Port Equipments	Misc. Manu- factured Articles
2001-02	145.17	144.73	42.41	48.49	142.30	396.66	160.01	880.78	150.78
2002-03	162.29	162.99	108.89	64.92	151.47	309.53	167.90	385.78	189.86
2003-04	153.72	172.75	263.00	48.54	196.70	361.71	158.48	511.88	185.00
2004-05	160.20	188.09	272.03	66.00	337.58	617.98	158.15	415.45	181.94
2005-06 ^P	185.35	232.75	254.55	54.11	510.30	600.15	180.15	550.93	219.38
2000-01									
Apr.-Jun.	162.05	153.14	19.41	45.67	146.85	354.95	182.45	765.37	168.83
2001-02									
Jul.-Sep.	125.87	147.07	35.26	37.96	165.35	339.67	136.68	230.19	124.27
Oct.-Dec.	146.13	152.85	38.47	36.66	115.26	409.46	164.42	276.54	149.88
Jan.-Mar.	141.59	136.94	36.83	67.32	119.44	386.04	152.42	359.55	150.19
Apr.-Jun.	167.10	142.07	59.08	52.01	169.16	451.47	186.51	586.85	178.79
2002-03									
Jul.-Sep.	153.00	124.03	45.89	53.06	125.82	276.56	164.58	394.20	181.47
Oct.-Dec.	166.53	168.73	141.94	98.87	152.47	375.57	159.60	221.92	213.71
Jan.-Mar.	160.90	182.29	40.17	64.20	162.04	336.99	167.36	400.18	175.91
Apr.-Jun.	168.72	176.91	207.55	43.53	165.53	248.99	180.04	526.83	188.36
2003-04									
Jul.-Sep.	158.85	175.09	163.92	34.09	158.27	313.31	172.43	656.53	169.12
Oct.-Dec.	143.46	172.99	285.74	58.23	97.21	334.86	149.01	375.74	153.02
Jan.-Mar.	148.53	162.15	360.56	51.64	120.55	354.90	152.64	355.62	173.28
Apr.-Jun.	164.02	180.77	242.08	50.21	410.77	443.76	159.85	659.63	204.59
2004-05									
Jul.-Sep.	125.60	141.99	297.11	44.78	190.28	406.45	130.10	434.19	135.33
Oct.-Dec.	154.80	175.37	124.83	99.33	499.95	392.77	149.29	238.13	170.90
Jan.-Mar.	173.81	200.92	323.94	68.33	448.30	597.75	171.39	383.66	200.25
Apr.-Jun.	186.59	234.09	342.23	51.56	211.77	1,104.93	181.81	605.82	221.26
2005-06									
Jul.-Sep.	188.75	195.70	281.07	48.59	412.76	568.94	188.03	524.85	236.26
Oct.-Dec.	177.83	249.28	249.27	59.83	542.17	515.22	170.94	715.21	199.56
Jan.-Mar	175.81	243.14	192.85	53.77	499.49	598.59	168.69	386.58	203.13
Apr.-Jun ^P	198.99	242.88	294.62	54.26	586.79	717.83	192.94	577.09	238.56

Source : Federal Bureau of Statistics

4.22 Quantum Index Number of Imports by Groups (1990-91= 100)

IMPORTS										
PERIOD	All Groups	Food and live Animals	Beverages and Tobacco	Crude Materials inedible except Fuels	Mineral Fuels and Lubricants	Veg./ Animal Oils and Fats	Chemicals	Manu- factured Goods	Machinery and Trans- port Equipments	Misc. Manu- factured Articles
2001-02	176.59	106.79	72.13	272.18	192.28	109.64	236.19	164.50	148.00	132.86
2002-03	198.08	114.78	108.95	279.46	180.59	125.93	254.95	174.60	226.71	156.83
2003-04	200.19	146.38	123.68	380.23	182.72	110.11	222.10	132.55	238.88	168.92
2004-05	252.72	188.42	145.09	416.11	178.77	128.75	226.70	175.19	429.39	193.44
2005-06 ^P	244.59	237.89	240.06	386.04	181.10	124.22	245.05	208.02	344.43	248.82
2000-01										
Apr.-Jun.	175.60	156.49	77.74	187.48	204.27	120.37	207.94	136.63	164.03	126.35
2001-02										
Jul.-Sep.	177.38	87.78	68.48	270.05	189.33	101.04	269.34	151.18	152.94	121.16
Oct.-Dec.	164.70	146.37	67.55	233.43	174.70	113.37	212.99	144.78	131.74	134.90
Jan.-Mar.	171.24	102.45	45.30	289.24	187.82	112.94	195.94	183.03	142.53	140.08
Apr.-Jun.	193.05	90.56	107.18	295.98	217.26	111.20	266.50	179.01	164.78	135.31
2002-03										
Jul.-Sep.	202.43	114.95	167.18	274.50	155.19	123.48	324.87	182.14	227.83	197.03
Oct.-Dec.	202.85	102.43	105.19	274.44	193.23	103.47	252.02	188.00	250.81	117.43
Jan.-Mar.	197.63	97.83	82.29	245.86	192.58	140.14	228.28	209.80	217.68	158.11
Apr.-Jun.	189.40	143.90	81.13	323.03	181.37	136.64	214.60	118.45	210.51	154.74
2003-04										
Jul.-Sep.	184.39	148.56	107.46	266.20	169.43	107.30	222.67	130.72	214.43	155.92
Oct.-Dec.	196.70	209.90	87.59	283.82	180.11	118.31	228.78	128.05	230.51	157.93
Jan.-Mar.	203.01	118.68	113.69	525.16	180.85	123.83	205.60	141.78	226.46	163.31
Apr.-Jun.	216.67	108.36	185.97	445.74	200.48	91.01	231.33	129.64	284.12	198.53
2004-05										
Jul.-Sep.	225.92	137.30	71.32	434.72	189.02	124.13	259.34	168.52	278.19	177.19
Oct.-Dec.	240.72	193.15	72.82	354.59	180.46	117.22	236.76	175.57	375.70	240.17
Jan.-Mar.	286.64	259.61	161.39	353.01	160.52	133.85	193.69	195.40	623.87	171.74
Apr.-Jun.	257.58	163.60	275.24	522.13	185.08	139.79	217.00	161.27	439.79	184.64
2005-06										
Jul.-Sep.	228.69	220.08	159.71	336.07	184.63	142.89	246.95	218.46	273.65	243.46
Oct.-Dec.	259.67	319.81	223.76	453.62	170.57	129.26	269.16	225.55	347.07	270.50
Jan.-Mar.	242.42	222.05	235.89	408.16	175.94	120.60	238.77	205.61	350.03	223.40
Apr.-Jun ^P	247.57	189.62	340.88	346.32	193.24	104.13	225.28	182.44	406.56	257.92

Source : Federal Bureau of Statistics