

## 2.1 Pakistan Monetary Survey

### (Depository Corporation Survey)

(Million Rupees)

Description	2004		2005		2006			
	Jun.	Dec.	Jun.	Dec.	Apr.	May	Jun.	Jul.
<b>Net Foreign Assets</b>	<b>629,893</b>	<b>631,752</b>	<b>687,363</b>	<b>621,354</b>	<b>727,233</b>	<b>715,792</b>	<b>764,545</b>	<b>720,607</b>
Claims on non-residents	892,268	907,190	947,484	877,489	984,504	973,389	1,017,100	972,481
<i>Less: Liabilities to non-residents</i>	262,375	275,438	260,121	256,135	257,271	257,597	252,555	251,874
<b>Domestic Credit</b>	<b>2,010,581</b>	<b>2,316,995</b>	<b>2,517,385</b>	<b>2,887,520</b>	<b>2,887,047</b>	<b>2,984,299</b>	<b>3,020,518</b>	<b>3,074,776</b>
<b>Net claims on General government <sup>1</sup></b>	<b>621,332</b>	<b>650,300</b>	<b>713,755</b>	<b>781,182</b>	<b>736,872</b>	<b>813,921</b>	<b>812,543</b>	<b>852,125</b>
<b>Net claims on Central government</b>	<b>698,825</b>	<b>749,251</b>	<b>808,055</b>	<b>882,427</b>	<b>850,698</b>	<b>925,848</b>	<b>928,166</b>	<b>962,617</b>
Claims on Central Govt.	828,774	888,647	998,713	1,129,834	1,095,847	1,161,720	1,176,896	1,201,632
<i>Less: Liabilities to Central Govt.</i>	129,949	139,396	190,658	247,407	245,149	235,872	248,730	239,015
<b>Net claims on Provincial governments <sup>2</sup></b>	<b>(77,493)</b>	<b>(98,951)</b>	<b>(94,300)</b>	<b>(101,245)</b>	<b>(113,826)</b>	<b>(111,927)</b>	<b>(115,623)</b>	<b>(110,492)</b>
Claims on Provincial Govts.	37,765	29,381	44,556	49,486	43,007	65,235	69,790	71,763
<i>Less: Liabilities to Provincial Govts.</i>	115,258	128,332	138,856	150,731	156,833	177,162	185,413	182,255
<b>Claims on Private sectors</b>	<b>1,195,888</b>	<b>1,465,259</b>	<b>1,600,931</b>	<b>1,861,899</b>	<b>1,922,677</b>	<b>1,929,374</b>	<b>1,957,418</b>	<b>1,958,082</b>
<b>Claims on NFPSEs</b>	<b>115,787</b>	<b>110,457</b>	<b>106,431</b>	<b>124,893</b>	<b>121,164</b>	<b>131,045</b>	<b>136,209</b>	<b>135,339</b>
<b>Claims on NBFIs Depository &amp; Non Depository</b>	<b>77,574</b>	<b>90,979</b>	<b>96,268</b>	<b>119,546</b>	<b>106,334</b>	<b>109,959</b>	<b>114,348</b>	<b>129,230</b>
<b>Broad Money Liabilities</b>	<b>2,474,647</b>	<b>2,725,437</b>	<b>2,965,174</b>	<b>3,201,675</b>	<b>3,283,897</b>	<b>3,344,174</b>	<b>3,417,389</b>	<b>3,366,705</b>
Currency outside Depository Corporations (Banks)	577,019	656,478	666,414	732,011	746,851	749,307	741,349	741,114
Transferable/Demand deposits	1,597,717	1,728,576	1,845,800	1,742,562	1,897,815	1,905,870	1,988,931	1,952,171
Other deposits (Quasi-Money)	299,911	340,383	452,960	727,102	639,231	688,997	687,109	673,420
<b>Public sector funds/deposits (SBP)</b>	<b>22,108</b>	<b>22,862</b>	<b>23,714</b>	<b>23,028</b>	<b>23,091</b>	<b>23,205</b>	<b>23,225</b>	<b>23,225</b>
<b>Counterpart funds</b>	<b>628</b>	<b>648</b>	<b>539</b>	<b>525</b>	<b>536</b>	<b>539</b>	<b>546</b>	<b>546</b>
<b>Other items (Net) <sup>3</sup></b>	<b>143,030</b>	<b>199,362</b>	<b>215,208</b>	<b>283,549</b>	<b>306,610</b>	<b>332,090</b>	<b>343,824</b>	<b>404,825</b>
Other liabilities	559,008	675,946	684,454	778,772	813,756	852,720	865,360	966,720
<i>less: Other assets</i>	415,978	476,584	469,246	495,223	507,146	520,630	521,536	561,895
<b>Memorandum items:</b>								
Bank Clearings	1,096,181	1,269,601	1,416,613	1,656,863	1,576,229	1,802,113	1,854,688	1,669,349
Post Office Savings	54,790	53,901	50,661	39,257	55,254	56,074	61,418	61,115

Note: Pakistan Monetary Survey is the analytical accounts of State Bank of Pakistan and Scheduled banks based on monthly reporting closely in the line with MFSM. Data relates to last working day of the month.

## 2.1 Pakistan Monetary Survey (Depository Corporation Survey)

(Million Rupees)

Description	2006					2007		
	Aug.	Sep	Oct.	Nov.	Dec.	Jan. .	Feb.	Mar. <sup>P</sup>
<b>Net Foreign Assets</b>	<b>708,884</b>	<b>715,077</b>	<b>711,408</b>	<b>699,918</b>	<b>760,627</b>	<b>779,767</b>	<b>801,289</b>	<b>838,315</b>
Claims on non-residents	964,077	968,719	967,365	956,678	1,014,788	1,033,791	1,057,800	1,093,507
<i>Less: Liabilities to non-residents</i>	255,193	253,642	255,957	256,760	254,161	254,024	256,511	255,192
<b>Domestic Credit</b>	<b>3,097,510</b>	<b>3,111,057</b>	<b>3,184,108</b>	<b>3,248,963</b>	<b>3,305,390</b>	<b>3,267,055</b>	<b>3,312,953</b>	<b>3,380,376</b>
<b>Net claims on General government <sup>1</sup></b>	<b>869,961</b>	<b>852,522</b>	<b>889,330</b>	<b>885,760</b>	<b>831,611</b>	<b>815,717</b>	<b>856,914</b>	<b>884,215</b>
<b>Net claims on Central Govt.</b>	<b>983,483</b>	<b>974,634</b>	<b>987,797</b>	<b>1,007,007</b>	<b>966,381</b>	<b>977,959</b>	<b>1,033,022</b>	<b>1,095,518</b>
Claims on Central Govt.	1,224,447	1,218,721	1,239,954	1,257,356	1,202,688	1,209,497	1,263,883	1,320,640
<i>Less: Liabilities to Central Govt.</i>	240,964	244,087	252,157	250,349	236,307	231,538	230,861	225,122
<b>Net claims on Provincial</b>	<b>(113,522)</b>	<b>(122,112)</b>	<b>(98,467)</b>	<b>(121,247)</b>	<b>(134,770)</b>	<b>(162,242)</b>	<b>(176,108)</b>	<b>(211,303)</b>
Claims on Provincial Govts.	69,967	70,160	67,674	59,783	41,880	34,130	30,053	21,009
<i>Less: Liabilities to Provincial</i>	183,489	192,272	166,141	181,030	176,650	196,372	206,161	232,312
<b>Claims on Private sectors</b>	<b>1,969,847</b>	<b>1,992,428</b>	<b>2,036,593</b>	<b>2,104,141</b>	<b>2,198,651</b>	<b>2,191,180</b>	<b>2,194,627</b>	<b>2,217,475</b>
<b>Claims on NFPSEs</b>	<b>136,360</b>	<b>141,668</b>	<b>131,472</b>	<b>129,783</b>	<b>136,126</b>	<b>129,132</b>	<b>129,891</b>	<b>139,078</b>
<b>Claims on NBFIs Depository &amp; Non Depository</b>	<b>121,342</b>	<b>124,439</b>	<b>126,713</b>	<b>129,279</b>	<b>139,002</b>	<b>131,026</b>	<b>131,521</b>	<b>139,608</b>
<b>Broad Money Liabilities</b>	<b>3,368,854</b>	<b>3,419,244</b>	<b>3,477,522</b>	<b>3,517,580</b>	<b>3,670,769</b>	<b>3,621,136</b>	<b>3,683,890</b>	<b>3,779,719</b>
Currency outside Depository Corporations (Banks)	736,805	770,635	826,098	811,985	874,597	829,812	830,282	834,993
Transferable/Demand deposits	1,926,869	1,933,591	1,928,275	1,963,875	1,985,421	2,010,404	2,017,243	2,065,802
Other deposits (Quasi-Money)	705,180	715,018	723,149	741,720	810,751	780,920	836,365	878,924
<b>Public sector funds/deposits (SBP)</b>	<b>23,253</b>	<b>23,253</b>	<b>23,280</b>	<b>23,400</b>	<b>23,419</b>	<b>23,419</b>	<b>23,446</b>	<b>23,446</b>
<b>Counterpart funds</b>	<b>548</b>	<b>557</b>	<b>557</b>	<b>504</b>	<b>512</b>	<b>512</b>	<b>514</b>	<b>509</b>
<b>Other items (Net) <sup>3</sup></b>	<b>413,664</b>	<b>383,004</b>	<b>394,081</b>	<b>407,324</b>	<b>371,257</b>	<b>401,633</b>	<b>406,325</b>	<b>414,957</b>
Other liabilities	957,761	981,428	1,016,718	997,066	1,006,064	1,043,476	1,046,925	1,052,249
<i>less: Other assets</i>	544,097	598,424	622,637	589,742	634,807	641,843	640,600	637,292
<b>Memorandum items:</b>								
Bank Clearings	1,661,977	1,665,657	1,512,439	1,711,131	1,888,611	1,558,812	1,699,689	1,906,608
Post Office Savings	58,608	56,020	54,455	51,723	52,977	53,113	57,637	57,637

1. General Government includes Central Government and Provincial Governments

2. Provincial Governments include Provincial Governments and Local Governments

3. *Other Liabilities* include Liabilities to scheduled banks, paid up capital and reserve accounts, Other liabilities from State bank and liabilities to State bank from scheduled banks. *Other assets* include claims on banks, other assets from State bank and claims on State bank from scheduled banks.

## 2.2 Analytical Accounts of State Bank of Pakistan

### (Central Bank Survey)

(Million Rupees)

Description	2004		2005		2006			
	Jun.	Dec.	Jun.	Dec.	Apr.	May	Jun.	Jul.
<b>Net Foreign Assets</b>	<b>557,419</b>	<b>482,210</b>	<b>555,306</b>	<b>523,044</b>	<b>609,995</b>	<b>607,796</b>	<b>639,843</b>	<b>612,338</b>
<b>Claims on non-residents (Foreign Assets)</b>	<b>788,988</b>	<b>719,586</b>	<b>784,327</b>	<b>747,854</b>	<b>835,864</b>	<b>832,049</b>	<b>864,062</b>	<b>835,366</b>
a) Monetary Gold Coin and Bullion	48,305	48,305	54,746	54,746	54,746	54,746	77,558	77,558
b) Holding of SDRs	13,827	14,449	13,569	12,915	13,286	13,426	13,124	13,135
c) Foreign Currency	5,515	744	767	3,176	3,792	2,552	3,126	3,804
d) Securities other than shares (Foreign)	500,312	421,873	472,514	414,829	536,378	543,452	555,312	523,348
e) Deposits	132,021	147,058	139,513	167,965	132,238	125,589	121,824	125,223
f) Loans	-	-	-	-	-	-	-	-
g) Financial Derivatives	-	-	-	-	-	-	-	-
h) Others	89,008	87,157	103,218	94,223	95,424	92,284	93,118	92,298
<i>Of which Quota - IMF</i>	88,097	86,246	90,312	93,254	93,254	91,315	92,156	91,315
<b>Less: Liabilities to non-residents (Foreign)</b>	<b>231,569</b>	<b>237,376</b>	<b>229,021</b>	<b>224,810</b>	<b>225,869</b>	<b>224,253</b>	<b>224,219</b>	<b>223,028</b>
a) Deposits	41,076	41,855	42,066	42,036	42,207	42,293	42,207	42,301
b) Securities other than shares (N.N.N.I.B)	105,654	94,867	90,301	85,268	84,698	84,697	85,259	84,279
c) Financial Derivatives	-	-	-	-	-	-	-	-
d) Loans (IMF Loan 1 & PRGF and SDF)	84,839	100,653	96,654	97,506	98,964	97,263	96,753	96,448
e) Other (IMF Administration Charges)	..	..	..	-	-	-	-	-
<b>Claims on other Depository Corporations</b>	<b>196,005</b>	<b>207,726</b>	<b>210,377</b>	<b>214,573</b>	<b>218,764</b>	<b>219,373</b>	<b>218,359</b>	<b>218,298</b>
a) Loans and Advances	161,888	173,609	181,987	186,183	192,897	193,506	193,579	193,518
b) Internal Bills Purchased and Discounted	116	116	116	116	116	116	116	116
c) Investment in Share Capital	34,001	34,001	28,274	28,274	25,751	25,751	24,664	24,664
<b>Net claims on General government <sup>1</sup></b>	<b>91,200</b>	<b>297,904</b>	<b>248,818</b>	<b>390,412</b>	<b>291,813</b>	<b>332,176</b>	<b>383,912</b>	<b>397,491</b>
<b>Net claims on Central Govt.</b>	<b>119,875</b>	<b>335,401</b>	<b>283,636</b>	<b>434,036</b>	<b>340,839</b>	<b>395,662</b>	<b>434,153</b>	<b>445,298</b>
<b>Claims on Central Govt.</b>	<b>139,698</b>	<b>361,645</b>	<b>347,862</b>	<b>542,609</b>	<b>442,265</b>	<b>491,897</b>	<b>525,082</b>	<b>529,313</b>
a) Securities	134,093	355,399	332,129	535,481	434,808	484,439	517,625	521,615
b) Other Claims	5,605	6,245	15,733	7,128	7,457	7,458	7,457	7,698
<b>Less: Liabilities to Central Government</b>	<b>19,823</b>	<b>26,244</b>	<b>64,226</b>	<b>108,573</b>	<b>101,426</b>	<b>96,235</b>	<b>90,929</b>	<b>84,015</b>
a) Deposits	19,823	26,244	64,226	108,573	101,426	96,235	90,929	84,015
b) Other Liabilities	-	-	-	-	-	-	-	-

Note: Analytical accounts are the statistical presentation of monetary statistics of State Bank of Pakistan based on monthly reporting closely in the line with MFSM.

## 2.2 Analytical Accounts of State Bank of Pakistan

(Central Bank Survey)

(Million Rupees)

Description	2004		2005		2006			
	Jun	Dec.	Jun.	Dec.	Apr.	May	Jun.	Jul.
<b>Net claims on Provincial governments <sup>2</sup></b>	<b>(28,675)</b>	<b>(37,497)</b>	<b>(34,818)</b>	<b>(43,624)</b>	<b>(49,026)</b>	<b>(63,486)</b>	<b>(50,241)</b>	<b>(47,807)</b>
<b>Claims on Provincial governments</b>	<b>5,533</b>	<b>7,242</b>	<b>10,814</b>	<b>14,503</b>	<b>14,802</b>	<b>13,579</b>	<b>16,404</b>	<b>16,858</b>
a) Securities	-	-	-	-	-	-	-	-
b) Other Claims	5,533	7,242	10,814	14,503	14,802	13,579	16,404	16,858
<b>Less: Liabilities to Provincial Govts.</b>	<b>34,208</b>	<b>44,739</b>	<b>45,632</b>	<b>58,127</b>	<b>63,828</b>	<b>77,065</b>	<b>66,645</b>	<b>64,665</b>
a) Deposits	34,208	44,739	45,632	58,127	63,828	77,065	66,645	64,665
b) Other Liabilities	-	-	-	-	-	-	-	-
<b>Claims on other sectors</b>	<b>23,387</b>	<b>18,774</b>	<b>16,927</b>	<b>15,415</b>	<b>15,621</b>	<b>15,661</b>	<b>15,889</b>	<b>16,089</b>
a) Other financial corporations	23,387	18,774	16,927	15,415	15,621	15,661	15,889	16,089
1) Loans and advances to NBFIs	21,640	17,027	15,254	13,742	13,948	13,988	14,216	14,416
2) Investment in NBFIs shares	1,747	1,747	1,673	1,673	1,673	1,673	1,673	1,673
b) Other resident sectors	-	-	-	-	-	-	-	-
<b>Monetary Base (Reserve Money)</b>	<b>772,869</b>	<b>895,963</b>	<b>909,013</b>	<b>985,352</b>	<b>989,514</b>	<b>1,006,960</b>	<b>1,001,334</b>	<b>1,041,454</b>
a) Currency in circulation	577,019	656,478	666,414	732,011	746,851	749,307	741,349	741,114
b) Liabilities to other Depository Corps.	193,734	233,993	239,264	250,014	238,960	253,858	255,054	295,766
1) Reserve deposits (Banker's deposits)	156,204	196,348	196,302	207,750	197,523	206,358	207,574	247,701
2) Other liabilities (Currency in scheduled banks)	37,530	37,645	42,962	42,264	41,437	47,500	47,480	48,065
c) Deposits included in broad money (Private sector deposits)	2,116	5,492	3,335	3,327	3,703	3,795	4,931	4,574
<b>Public sector funds/deposits</b>	<b>22,108</b>	<b>22,862</b>	<b>23,714</b>	<b>23,028</b>	<b>23,091</b>	<b>23,205</b>	<b>23,225</b>	<b>23,225</b>
<b>Counterpart funds</b>	<b>628</b>	<b>648</b>	<b>539</b>	<b>525</b>	<b>536</b>	<b>539</b>	<b>546</b>	<b>546</b>
<b>Paid up Capital and Reserve</b>	<b>5,515</b>	<b>5,515</b>	<b>5,515</b>	<b>15,514</b>	<b>15,514</b>	<b>15,514</b>	<b>15,514</b>	<b>15,514</b>
<b>Other items (Net) <sup>3</sup></b>	<b>66,891</b>	<b>81,624</b>	<b>92,644</b>	<b>119,024</b>	<b>107,539</b>	<b>128,789</b>	<b>217,385</b>	<b>163,476</b>
Other Liabilities	97,472	115,347	120,364	152,376	162,000	179,556	270,905	217,472
Less: Other Assets	30,581	33,723	27,720	33,352	54,461	50,767	53,520	53,996
Plus: Consolidation adjustments	-	-	-	-	-	-	-	-

P: Provincial

## 2.2 Analytical Accounts of State Bank of Pakistan (Central Bank Survey)

(Million Rupees)

Description	2006					2007		
	Aug.	Sep.	Oct.	Nov.	Dec.	Jan.	Feb.	Mar. <sup>P</sup>
<b>Net Foreign Assets</b>	<b>613,263</b>	<b>608,987</b>	<b>616,601</b>	<b>604,347</b>	<b>642,680</b>	<b>656,684</b>	<b>666,699</b>	<b>682,889</b>
<b>Claims on non-residents (Foreign Assets)</b>	<b>836,789</b>	<b>832,201</b>	<b>838,491</b>	<b>827,424</b>	<b>865,562</b>	<b>878,089</b>	<b>888,692</b>	<b>905,128</b>
a) Monetary Gold Coin and Bullion	77,558	77,558	77,558	77,558	77,558	77,558	77,558	77,558
b) Holding of SDRs	13,136	13,094	13,084	13,332	13,122	12,988	13,013	13,069
c) Foreign Currency	2,062	3,108	1,824	1,494	2,792	4,481	4,244	3,203
d) Securities other than shares (Foreign)	522,473	500,134	526,343	511,633	549,365	544,173	559,037	581,790
e) Deposits	129,271	146,018	127,385	131,121	128,434	142,796	140,510	137,224
f) Loans	-	-	-	-	-	-	-	-
g) Financial Derivatives	-	-	-	-	-	-	-	-
h) Others	92,289	92,289	92,297	92,286	94,291	96,093	94,330	92,284
<i>Of which Quota - IMF</i>	91,315	91,315	91,315	91,315	91,315	91,315	91,315	91,315
<b>Less: Liabilities to non-residents (Foreign)</b>	<b>223,526</b>	<b>223,214</b>	<b>221,890</b>	<b>223,077</b>	<b>222,882</b>	<b>221,405</b>	<b>221,993</b>	<b>222,239</b>
a) Deposits	42,341	42,449	42,483	42,636	42,671	42,557	42,542	42,564
b) Securities other than shares (N.N.N.I.B)	84,279	84,139	83,860	83,860	83,581	83,442	83,442	83,302
c) Financial Derivatives	-	-	-	-	-	-	-	-
d) Loans (IMF Loan 1 & PRGF and SDF)	96,906	96,626	95,547	96,581	96,630	95,406	96,009	96,373
e) Other (IMF Administration Charges)	-	-	-	-	-	-	-	-
<b>Claims on other Depository Corporations</b>	<b>186,218</b>	<b>220,777</b>	<b>235,024</b>	<b>249,854</b>	<b>275,936</b>	<b>274,598</b>	<b>273,114</b>	<b>276,581</b>
a) Loans and Advances	161,438	195,997	210,244	224,634	250,716	249,378	247,894	251,801
b) Internal Bills Purchased and Discounted	116	116	116	116	116	116	116	116
c) Investment in Share Capital	24,664	24,664	24,664	25,104	25,104	25,104	25,104	24,664
<b>Net Claims on General government <sup>1</sup></b>	<b>442,869</b>	<b>445,247</b>	<b>491,759</b>	<b>468,406</b>	<b>461,811</b>	<b>447,528</b>	<b>418,285</b>	<b>416,822</b>
<b>Net claims on Central government</b>	<b>491,490</b>	<b>504,033</b>	<b>523,798</b>	<b>510,584</b>	<b>505,632</b>	<b>511,052</b>	<b>483,394</b>	<b>499,771</b>
<b>Claims on Central government</b>	<b>574,766</b>	<b>584,773</b>	<b>603,372</b>	<b>588,330</b>	<b>575,706</b>	<b>577,598</b>	<b>541,357</b>	<b>555,160</b>
a) Securities	567,309	577,316	595,915	580,873	568,249	570,141	533,531	547,334
b) Other Claims	7,457	7,457	7,457	7,457	7,457	7,457	7,826	7,826
<b>Less: Liabilities to Central government</b>	<b>83,276</b>	<b>80,740</b>	<b>79,574</b>	<b>77,746</b>	<b>70,074</b>	<b>66,546</b>	<b>57,963</b>	<b>55,389</b>
a) Deposits	83,276	80,740	79,574	77,746	70,074	66,546	57,963	55,389
b) Other Liabilities	-	-	-	-	-	-	-	-

Revaluation Procedure:

- Gold is revalued at the end of financial year (June end) on the basis of closing London Market Rate.
- SDR holdings (with IMF and SBP) are revalued on weekly basis.
- IMF related balances, IMF Account No.1, IMF Account No. 2, IMF securities account and IMF quota account, are revalued at the close of IMF financial year i.e. 30th April and also 30<sup>th</sup> June of SBP.

## 2.2 Analytical Accounts of State Bank of Pakistan

(Central Bank Survey)

(Million Rupees)

Description	2006					2007		
	Aug.	Sep.	Oct.	Nov.	Dec.	Jan.	Feb.	Mar. <sup>P</sup>
<b>Net claims on Provincial governments<sup>2</sup></b>	<b>(48,621)</b>	<b>(58,786)</b>	<b>(32,039)</b>	<b>(42,178)</b>	<b>(43,821)</b>	<b>(63,524)</b>	<b>(65,109)</b>	<b>(82,949)</b>
<b>Claims on Provincial governments</b>	<b>15,049</b>	<b>15,733</b>	<b>15,725</b>	<b>14,318</b>	<b>6,560</b>	<b>6,057</b>	<b>10,990</b>	<b>9,534</b>
a) Securities	-	-	-	-	-	-	-	-
b) Other Claims	15,049	15,733	15,725	14,318	6,560	6,057	10,990	9,534
<b>Less: Liabilities to Provincial Govts.</b>	<b>63,670</b>	<b>74,519</b>	<b>47,764</b>	<b>56,496</b>	<b>50,381</b>	<b>69,581</b>	<b>76,099</b>	<b>92,483</b>
a) Deposits	63,670	74,519	47,764	56,496	50,381	69,581	76,099	92,483
b) Other Liabilities	-	-	-	-	-	-	-	-
<b>Claims on other sectors</b>	<b>16,089</b>	<b>16,089</b>	<b>16,089</b>	<b>16,110</b>	<b>17,819</b>	<b>17,264</b>	<b>16,162</b>	<b>16,143</b>
a) Other financial corporations	16,089	16,089	16,089	16,110	17,819	17,264	16,162	16,143
1) Loans and advances to NBFIs	14,416	14,416	14,416	14,437	16,146	15,591	14,489	14,030
2) Investment in NBFIs shares	1,673	1,673	1,673	1,673	1,673	1,673	1,673	2,113
b) Other resident sectors	-	-	-	-	-	-	-	-
<b>Monetary Base (Reserve Money)</b>	<b>1,049,65</b>	<b>1,077,005</b>	<b>1,142,122</b>	<b>1,112,708</b>	<b>1,191,780</b>	<b>1,156,430</b>	<b>1,156,642</b>	<b>1,151,961</b>
a) Currency in circulation	736,805	770,635	826,098	811,985	874,597	829,812	830,282	834,993
b) Liabilities to other Depository Corps.	308,201	301,600	311,045	295,803	312,385	321,788	321,468	311,373
1) Reserve deposits (Banker's deposits)	262,353	255,091	255,765	246,491	264,356	265,468	269,546	262,228
2) Other liabilities (Currency in scheduled banks)	45,848	46,509	55,280	49,312	48,029	56,320	51,922	49,145
c) Deposits included in broad money (Private sector deposits)	4,651	4,770	4,979	4,920	4,798	4,830	4,892	5,595
<b>Public sector funds/deposits</b>	<b>23,253</b>	<b>23,253</b>	<b>23,280</b>	<b>23,400</b>	<b>23,419</b>	<b>23,419</b>	<b>23,446</b>	<b>23,446</b>
<b>Counterpart funds</b>	<b>548</b>	<b>557</b>	<b>557</b>	<b>504</b>	<b>512</b>	<b>512</b>	<b>514</b>	<b>509</b>
<b>Paid up Capital and Reserve</b>	<b>15,514</b>	<b>15,514</b>	<b>15,514</b>	<b>34,656</b>	<b>34,656</b>	<b>34,656</b>	<b>34,656</b>	<b>34,656</b>
<b>Other items (Net)<sup>3</sup></b>	<b>169,465</b>	<b>174,771</b>	<b>177,998</b>	<b>167,448</b>	<b>147,881</b>	<b>181,055</b>	<b>159,002</b>	<b>181,864</b>
Other Liabilities	227,190	251,098	257,772	218,524	200,070	232,855	213,093	238,836
Less: Other Assets	57,725	76,327	79,774	51,076	52,189	51,800	54,091	56,972
Plus: Consolidation adjustments	-	-	-	-	-	-	-	-

1. General Government includes Central Government and Provincial Governments

2. Provincial Governments includes Provincial Governments and Local Governments

3. *Other Liabilities* include Liabilities to scheduled banks, paid up capital and reserve accounts, Other liabilities from State bank and liabilities to State bank from Scheduled banks. *Other assets* include claims on banks, other assets from State bank and claims on State bank from scheduled banks.

## 2.3 Analytical Accounts of Scheduled Banks (Other Depository Corporations Survey)

(Million Rupees)

Description	2004		2005		2006			
	Jun.	Dec.	Jun.	Dec.	Apr.	May.	Jun.	Jul.
<b>Net Foreign Assets</b>	<b>72,474</b>	<b>149,542</b>	<b>132,057</b>	<b>98,310</b>	<b>117,238</b>	<b>107,996</b>	<b>124,702</b>	<b>108,269</b>
<b>Claims on non-residents (Foreign Assets)</b>	<b>103,280</b>	<b>187,604</b>	<b>163,157</b>	<b>129,635</b>	<b>148,640</b>	<b>141,340</b>	<b>153,038</b>	<b>137,115</b>
a) Foreign currency	4,960	6,362	6,806	7,350	7,284	6,218	6,415	6,497
b) Deposits	40,101	122,165	88,742	56,170	70,394	59,808	70,327	55,844
c) Securities other than shares <sup>1</sup>	58,219	59,077	67,609	66,115	70,962	75,314	76,296	74,774
d) Loans	-	-	-	-	-	-	-	-
e) Financial derivatives	-	-	-	-	-	-	-	-
f) Other	-	-	-	-	-	-	-	-
<b>Less: Liabilities to non-residents</b>	<b>30,806</b>	<b>38,062</b>	<b>31,100</b>	<b>31,325</b>	<b>31,402</b>	<b>33,344</b>	<b>28,336</b>	<b>28,846</b>
a) Deposits	21,602	23,982	24,777	27,366	24,427	25,626	23,910	23,418
b) Securities other than shares	-	-	-	-	-	-	-	-
c) Financial derivatives	-	-	-	-	-	-	-	-
d) Loans	9,204	14,080	6,323	3,959	6,975	7,718	4,426	5,428
e) Other	-	-	-	-	-	-	-	-
<b>Claims on central bank</b>	<b>189,393</b>	<b>235,135</b>	<b>231,150</b>	<b>247,298</b>	<b>233,921</b>	<b>250,490</b>	<b>249,658</b>	<b>289,601</b>
a) Currency	37,263	37,645	42,962	42,265	41,437	47,500	47,480	48,065
b) Reserve deposits	152,130	197,490	188,188	205,033	192,484	202,990	202,178	241,536
c) Other Claims	-	-	-	-	-	-	-	-
<b>Net claims on General Government <sup>2</sup></b>	<b>530,132</b>	<b>352,396</b>	<b>464,937</b>	<b>390,770</b>	<b>445,059</b>	<b>481,745</b>	<b>428,631</b>	<b>454,634</b>
<b>Net claims on Central Govt.</b>	<b>578,950</b>	<b>413,850</b>	<b>524,419</b>	<b>448,391</b>	<b>509,859</b>	<b>530,186</b>	<b>494,013</b>	<b>517,319</b>
<b>Claims on Central Govt.</b>	<b>689,076</b>	<b>527,002</b>	<b>650,851</b>	<b>587,225</b>	<b>653,582</b>	<b>669,823</b>	<b>651,814</b>	<b>672,319</b>
a) Securities	670,536	490,793	600,743	551,012	623,882	625,862	597,924	613,929
b) Other claims	18,540	36,209	50,108	36,213	29,700	43,961	53,890	58,390
<b>Less: Liabilities to Central Govt.</b>	<b>110,126</b>	<b>113,152</b>	<b>126,432</b>	<b>138,834</b>	<b>143,723</b>	<b>139,637</b>	<b>157,801</b>	<b>155,000</b>
a) Deposits	110,126	113,152	126,432	138,834	143,723	139,637	157,801	155,000
b) Other Liabilities	-	-	-	-	-	-	-	-
<b>Net claims on provincial governments <sup>3</sup></b>	<b>(48,818)</b>	<b>(61,454)</b>	<b>(59,482)</b>	<b>(57,621)</b>	<b>(64,800)</b>	<b>(48,441)</b>	<b>(65,382)</b>	<b>(62,685)</b>
<b>Claims on provincial governments</b>	<b>32,232</b>	<b>22,139</b>	<b>33,742</b>	<b>34,983</b>	<b>28,205</b>	<b>51,656</b>	<b>53,386</b>	<b>54,905</b>
a) Securities	80	92	80	79	76	76	76	76
b) Other claims	32,152	22,047	33,662	34,904	28,129	51,580	53,310	54,829
<b>Less: Liabilities to prov. governments</b>	<b>81,050</b>	<b>83,593</b>	<b>93,224</b>	<b>92,604</b>	<b>93,005</b>	<b>100,097</b>	<b>118,768</b>	<b>117,590</b>
a) Deposits	81,050	83,593	93,224	92,604	93,005	100,097	118,768	117,590
b) Other liabilities	-	-	-	-	-	-	-	-

Note: Analytical accounts are the statistical presentation of monetary statistics of Scheduled Banks based on monthly reporting closely in the line with MFSM.

## 2.3 Analytical Accounts of Scheduled Banks (Other Depository Corporations Survey)

(Million Rupees)

Description	2004		2005		2006			
	Jun	Dec.	Jun.	Dec.	Apr.	May.	Jun.	Jul.
<b>Claims on other sectors</b>	<b>1,365,862</b>	<b>1,647,921</b>	<b>1,786,703</b>	<b>2,090,923</b>	<b>2,134,554</b>	<b>2,154,717</b>	<b>2,192,086</b>	<b>2,206,562</b>
a) Other financial corporations	54,187	72,205	79,341	104,131	90,713	94,298	98,459	113,141
b) Public non financial corporations	115,787	110,457	106,431	124,893	121,164	131,045	136,209	135,339
c) Other non financial corporations	514,963	619,349	646,467	753,767	805,972	800,111	798,577	806,987
d) Other resident sectors	680,925	845,910	954,464	1,108,132	1,116,705	1,129,263	1,158,841	1,151,095
<b>Liabilities to Central Bank</b>	<b>163,350</b>	<b>176,890</b>	<b>189,678</b>	<b>192,709</b>	<b>200,413</b>	<b>201,534</b>	<b>202,157</b>	<b>200,953</b>
<b>Deposits included in broad money</b>	<b>1,895,512</b>	<b>2,063,467</b>	<b>2,295,425</b>	<b>2,466,337</b>	<b>2,533,343</b>	<b>2,591,072</b>	<b>2,671,109</b>	<b>2,621,017</b>
Transferable deposits (Demand deposits)	<b>1,595,601</b>	<b>1,723,084</b>	<b>1,842,465</b>	<b>1,739,235</b>	<b>1,894,112</b>	<b>1,902,075</b>	<b>1,984,000</b>	<b>1,947,597</b>
a) Other financial corporations	16,896	20,977	16,276	31,460	38,254	30,372	31,267	32,437
b) Public non financial corporations	119,825	137,688	124,015	122,578	114,682	116,664	124,708	106,957
c) Other non financial corporations	-	553,987	593,068	563,885	557,292	570,052	593,012	593,012
d) Other resident sectors	1,458,880	1,010,432	1,109,106	1,021,312	1,183,884	1,184,987	1,235,013	1,215,191
Other deposits /Time deposits	<b>299,911</b>	<b>340,383</b>	<b>452,960</b>	<b>727,102</b>	<b>639,231</b>	<b>688,997</b>	<b>687,109</b>	<b>673,420</b>
a) Other financial corporations	5,101	6,083	7,617	13,913	12,640	13,748	18,842	17,403
b) Public non financial corporations	70,876	63,026	93,133	148,919	141,486	136,216	131,483	142,880
c) Other non financial corporations	-	90,721	109,393	150,033	157,396	180,112	171,011	171,011
d) Other resident sectors	223,934	180,553	242,817	414,237	327,709	358,921	365,773	342,126
<b>Deposits Excluded from broad money</b>	<b>26,153</b>	<b>23,027</b>	<b>29,906</b>	<b>49,022</b>	<b>33,009</b>	<b>33,259</b>	<b>54,626</b>	<b>35,861</b>
<b>Loans</b>	<b>30,883</b>	<b>30,190</b>	<b>24,878</b>	<b>47,878</b>	<b>126,315</b>	<b>141,570</b>	<b>165,957</b>	<b>158,990</b>
<i>Of which: Other financial corporations</i>	1,408	680	672	1,540	1,297	2,616	1,448	1,093
<b>Financial Derivatives</b>	-	-	-	-	-	-	-	-
<b>Central Govt. Lending Fund</b>	<b>9,486</b>	<b>9,314</b>	<b>9,314</b>	<b>9,314</b>	<b>9,314</b>	<b>9,314</b>	<b>9,314</b>	<b>9,314</b>
<b>Shares and Other equity</b>	<b>140,640</b>	<b>167,127</b>	<b>201,521</b>	<b>225,803</b>	<b>246,669</b>	<b>245,230</b>	<b>246,334</b>	<b>264,640</b>
a) Funds contributed by owners	80,149	84,836	98,086	106,250	113,867	118,490	121,198	122,787
b) Retained earnings	(14,872)	2,298	4,655	11,896	35,526	31,855	29,798	28,602
c) General & Special Reserves	62,479	66,463	85,548	88,150	98,113	95,745	95,997	96,793
d) Valuation adjustment	12,884	13,530	13,232	19,507	(837)	(860)	(659)	16,458
<b>Other items (net)</b>	<b>(108,224)</b>	<b>(85,457)</b>	<b>(135,985)</b>	<b>(163,858)</b>	<b>(218,438)</b>	<b>(227,115)</b>	<b>(354,500)</b>	<b>(231,790)</b>
Other liabilities	725,409	681,538	762,030	835,862	658,955	706,106	790,449	812,480
<i>Less: Other Assets</i>	833,633	766,995	898,015	999,720	877,393	933,221	1,144,949	1,044,270
<i>Plus Consolidation adjustment</i>	-	-	-	-	-	-	-	-

*Other Liabilities* include Liabilities to scheduled banks, paid up capital and reserve accounts, Other liabilities from State bank and liabilities to State bank from Scheduled banks. *Other assets* include Claims on banks, Other assets from State bank and Claims on State bank from scheduled banks



## 2.3 Analytical Accounts of Scheduled Banks (Other Depository Corporations Survey)

(Million Rupees)

Description	2006					2007		
	Aug.	Sep.	Oct.	Nov.	Dec.	Jan.	Feb.	Mar. <sup>P</sup>
<b>Net Foreign Assets</b>	<b>95,621</b>	<b>106,090</b>	<b>94,807</b>	<b>95,571</b>	<b>117,947</b>	<b>123,083</b>	<b>134,590</b>	<b>155,426</b>
<b>Claims on non-residents (Foreign Assets)</b>	<b>127,288</b>	<b>136,518</b>	<b>128,874</b>	<b>129,254</b>	<b>149,226</b>	<b>155,702</b>	<b>169,108</b>	<b>188,379</b>
a) Foreign currency	6,950	7,489	8,734	8,111	9,546	8,463	9,292	9,212
b) Deposits	47,844	57,467	49,163	48,454	65,003	77,127	87,400	104,943
c) Securities other than shares <sup>1</sup>	72,494	71,562	70,977	72,689	74,677	70,112	72,416	74,224
d) Loans	-	-	-	-	-	-	-	-
e) Financial derivatives	-	-	-	-	-	-	-	-
f) Other	-	-	-	-	-	-	-	-
<b>Less: Liabilities to non-residents</b>	<b>31,667</b>	<b>30,428</b>	<b>34,067</b>	<b>33,683</b>	<b>31,279</b>	<b>32,619</b>	<b>34,518</b>	<b>32,953</b>
a) Deposits	23,791	23,548	23,541	25,530	26,283	26,527	26,808	27,061
b) Securities other than shares	-	-	-	-	-	-	-	-
c) Financial derivatives	-	-	-	-	-	-	-	-
d) Loans	7,876	6,880	10,526	8,153	4,996	6,092	7,710	5,892
e) Other	-	-	-	-	-	-	-	-
<b>Claims on central bank</b>	<b>300,154</b>	<b>301,320</b>	<b>307,840</b>	<b>288,812</b>	<b>306,682</b>	<b>315,445</b>	<b>313,395</b>	<b>303,740</b>
a) Currency	45,848	46,509	55,280	49,312	48,029	56,320	51,921	49,145
b) Reserve deposits	254,306	254,811	252,560	239,500	258,653	259,125	261,474	254,595
c) Other Claims	-	-	-	-	-	-	-	-
<b>Net claims on General government<sup>2</sup></b>	<b>427,092</b>	<b>407,275</b>	<b>397,571</b>	<b>417,354</b>	<b>369,800</b>	<b>368,189</b>	<b>438,629</b>	<b>467,393</b>
<b>Net claims on Central government</b>	<b>491,993</b>	<b>470,601</b>	<b>463,999</b>	<b>496,423</b>	<b>460,749</b>	<b>466,907</b>	<b>549,628</b>	<b>595,747</b>
<b>Claims on Central government</b>	<b>649,681</b>	<b>633,948</b>	<b>636,582</b>	<b>669,026</b>	<b>626,982</b>	<b>631,899</b>	<b>722,526</b>	<b>765,480</b>
a) Securities	590,239	573,284	576,260	610,203	568,506	574,797	666,371	713,029
b) Other claims	59,442	60,664	60,322	58,823	58,476	57,102	56,155	52,451
<b>Less: Liabilities to Central government</b>	<b>157,688</b>	<b>163,347</b>	<b>172,583</b>	<b>172,603</b>	<b>166,233</b>	<b>164,992</b>	<b>172,898</b>	<b>169,733</b>
a) Deposits	157,688	163,347	172,583	172,603	166,233	164,992	172,898	169,733
b) Other Liabilities	-	-	-	-	-	-	-	-
<b>Net Claims on Provincial governments<sup>3</sup></b>	<b>(64,901)</b>	<b>(63,326)</b>	<b>(66,428)</b>	<b>(79,069)</b>	<b>(90,949)</b>	<b>(98,718)</b>	<b>(110,999)</b>	<b>(128,354)</b>
<b>Claims on Provincial governments</b>	<b>54,918</b>	<b>54,427</b>	<b>51,949</b>	<b>45,465</b>	<b>35,320</b>	<b>28,073</b>	<b>19,063</b>	<b>11,475</b>
a) Securities	76	90	76	75	75	75	75	75
b) Other claims	54,842	54,337	51,873	45,390	35,245	27,998	18,988	11,400
<b>Less: Liabilities to Prov. governments</b>	<b>119,819</b>	<b>117,753</b>	<b>118,377</b>	<b>124,534</b>	<b>126,269</b>	<b>126,791</b>	<b>130,062</b>	<b>139,829</b>
a) Deposits	119,819	117,753	118,377	124,534	126,269	126,791	130,062	139,829
b) Other liabilities	-	-	-	-	-	-	-	-

*P: Provincial*

## 2.3 Analytical Accounts of Scheduled Banks (Other Depository Corporations Survey)

(Million Rupees)

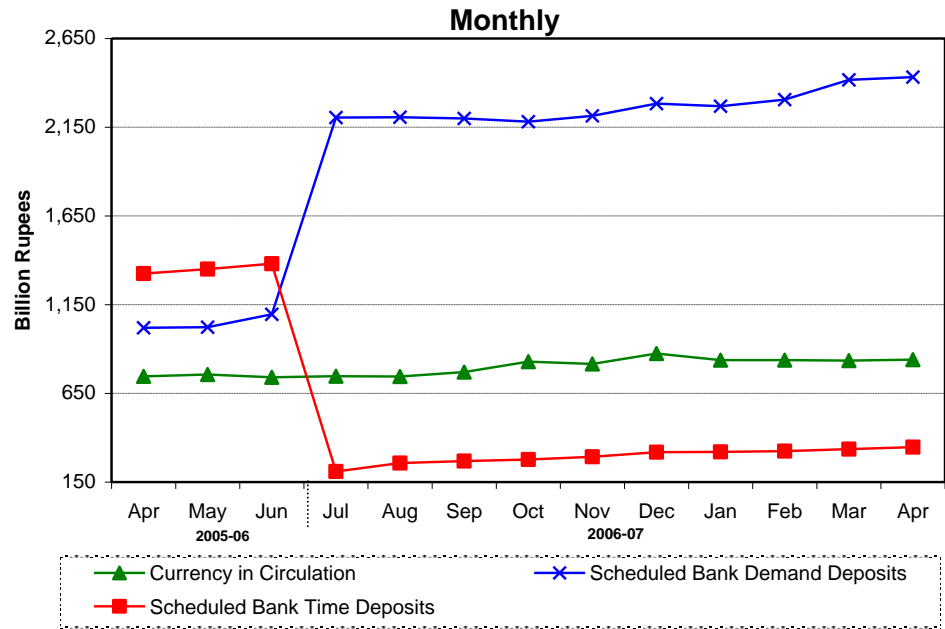
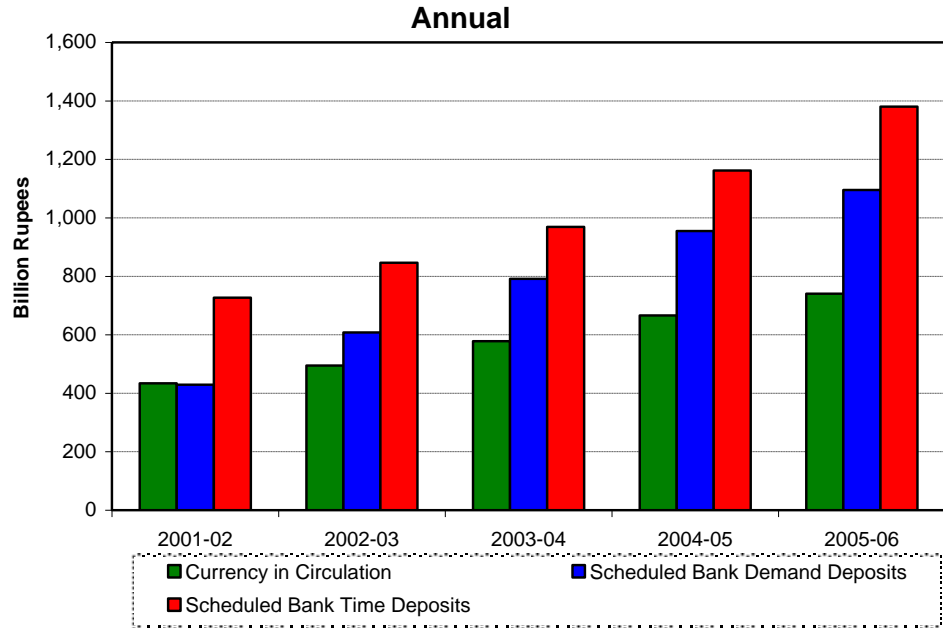
Description	2006					2007		
	Aug.	Sep.	Oct.	Nov.	Dec.	Jan.	Feb.	Mar. <sup>P</sup>
<b>Claims on other sectors</b>	<b>2,211,460</b>	<b>2,242,446</b>	<b>2,278,689</b>	<b>2,347,093</b>	<b>2,455,960</b>	<b>2,434,074</b>	<b>2,439,877</b>	<b>2,480,018</b>
a) Other financial corporations	105,253	108,350	110,624	113,169	121,183	113,762	115,359	123,465
b) Public non financial corporations	136,360	141,668	131,472	129,783	136,126	129,132	129,891	139,078
c) Other non financial corporations	798,592	805,197	830,980	867,710	906,975	898,815	913,581	917,320
d) Other resident sectors	1,171,255	1,187,231	1,205,613	1,236,431	1,291,676	1,292,365	1,281,046	1,300,155
<b>Liabilities to Central Bank</b>	<b>169,991</b>	<b>204,376</b>	<b>218,229</b>	<b>231,166</b>	<b>255,829</b>	<b>255,967</b>	<b>252,830</b>	<b>258,082</b>
<b>Deposits included in broad money</b>	<b>2,627,398</b>	<b>2,643,839</b>	<b>2,646,445</b>	<b>2,700,675</b>	<b>2,791,374</b>	<b>2,786,494</b>	<b>2,848,716</b>	<b>2,939,131</b>
Transferable deposits (Demand deposits)	<b>1,922,218</b>	<b>1,928,821</b>	<b>1,923,296</b>	<b>1,958,955</b>	<b>1,980,623</b>	<b>2,005,574</b>	<b>2,012,351</b>	<b>2,060,207</b>
a) Other financial corporations	33,999	31,932	26,099	35,250	30,561	36,047	36,468	42,392
b) Public non financial corporations	105,140	103,804	95,853	119,875	83,627	109,303	109,754	111,116
c) Other non financial corporations	288,054	601,441	593,525	604,923	623,956	619,424	616,631	640,945
d) Other resident sectors	1,495,025	1,191,644	1,207,819	1,198,907	1,242,479	1,240,800	1,249,498	1,265,754
<b>Other deposits /Time deposits</b>	<b>705,180</b>	<b>715,018</b>	<b>723,149</b>	<b>741,720</b>	<b>810,751</b>	<b>780,920</b>	<b>836,365</b>	<b>878,924</b>
a) Other financial corporations	16,094	17,767	20,837	21,168	28,927	28,461	25,565	32,954
b) Public non financial corporations	157,429	142,612	135,419	144,406	131,955	131,391	142,064	139,664
c) Other non financial corporations	170,888	168,587	177,849	186,169	203,150	188,162	233,847	246,559
d) Other resident sectors	360,769	386,052	389,044	389,977	446,719	432,906	434,889	459,747
<b>Deposits Excluded from broad money</b>	<b>29,213</b>	<b>33,056</b>	<b>41,644</b>	<b>51,060</b>	<b>64,030</b>	<b>52,143</b>	<b>53,685</b>	<b>52,669</b>
<b>Loans</b>	<b>166,732</b>	<b>169,740</b>	<b>135,809</b>	<b>145,672</b>	<b>159,980</b>	<b>124,439</b>	<b>164,293</b>	<b>129,982</b>
<i>Of which: other financial corporations</i>	927	1,170	2,072	3,598	5,203	2,957	1,997	2,119
<b>Financial Derivatives</b>	-	-	-	-	-	-	-	-
<b>Central Govt. Lending Fund</b>	<b>9,314</b>	<b>9,314</b>	<b>9,314</b>	<b>9,354</b>	<b>9,314</b>	<b>9,314</b>	<b>9,354</b>	<b>9,314</b>
<b>Shares and Other equity</b>	<b>264,678</b>	<b>270,383</b>	<b>280,984</b>	<b>281,056</b>	<b>317,141</b>	<b>321,579</b>	<b>342,404</b>	<b>379,236</b>
a) Funds contributed by owners	125,753	126,993	126,705	127,636	165,858	134,670	134,676	180,299
b) Retained earnings	26,470	26,856	23,216	23,477	26,120	38,835	57,027	41,620
c) General & Special Reserves	97,966	98,698	111,538	110,683	109,051	129,355	131,501	138,714
d) Valuation adjustment	14,489	17,836	19,525	19,260	16,112	18,719	19,200	18,603
<b>Other items (net)</b>	<b>(233,072)</b>	<b>(273,653)</b>	<b>(253,592)</b>	<b>(270,225)</b>	<b>(347,341)</b>	<b>(309,265)</b>	<b>(344,858)</b>	<b>(361,898)</b>
Other liabilities	859,002	885,661	929,030	976,796	903,638	596,637	655,920	670,708
<i>Less: Other Assets</i>	1,092,074	1,159,314	1,182,622	1,247,021	1,250,979	905,902	1,000,778	1,032,606
<i>Plus Consolidation adjustment</i>	-	-	-	-	-	-	-	-

1. Including Non-residents Securities

2. General Government includes Central Government and Provincial Governments

3. Provincial Governments includes Provincial Governments and Local/City Governments

## Monetary Statistics





## 2.4 Monetary Statistics

( Million Rupees )

Last Saturday/ Last working day	Currency in Circulation	Other Deposits with SBP <sup>1</sup>	Currency in tills of Scheduled Banks	Banks' Deposits with SBP	Reserve Money (M <sub>0</sub> ) (1+2+3+4)	Scheduled Banks' Demand Deposits <sup>2</sup>	Narrow Money (M <sub>1</sub> ) (1+2+6)	Scheduled Banks' Time Deposits <sup>2</sup>	Resident Foreign Currency Deposits	Broad Money (M <sub>2</sub> ) (7+8+9)	Money Multi- plier (10/5)	
												1
2002	Jun.	433,816	13,847	26,414	110,522	584,599	429,175	876,838	727,076	157,456	1,761,370	3.01
	Dec.	487,746	2,127	25,510	125,152	640,534	513,007	1,002,880	779,877	130,658	1,913,415	2.99
2003	Jun.	494,577	3,499	30,415	140,990	669,481	608,170	1,106,246	846,321	126,138	2,078,705	3.10
	Dec.	567,517	3,495	30,273	145,224	746,510	698,321	1,269,335	861,809	135,019	2,266,162	3.04
2004	Jun.	578,116	2,116	36,432	156,204	772,868	791,413	1,371,645	969,217	145,694	2,486,556	3.22
	Dec.	655,283	5,499	38,836	196,348	895,966	881,046	1,541,828	1,016,729	172,493	2,731,049	3.05
2005	Jun.	665,901	3,335	43,472	196,302	909,010	954,998	1,624,235	1,161,823	180,295	2,966,352	3.26
	Dec.	731,749	3,327	42,527	207,750	985,352	1,069,604	1,804,679	1,207,666	189,525	3,201,870	3.25
2006	Jun.	740,390	4,931	48,439	207,574	1,001,334	1,095,260	1,840,581	1,380,418	195,501	3,416,500	3.41
	Dec.	874,260	4,798	48,367	264,356	1,191,781	2,282,635	3,161,693	318,621	198,719	3,679,033	3.09
2006	Apr.	746,197	3,799	42,092	197,523	989,612	1,019,240	1,769,236	1,325,360	192,567	3,287,162	3.32
	May	756,191	3,889	42,842	198,059	1,000,981	1,023,326	1,783,405	1,350,540	190,190	3,324,135	3.32
	Jun.	740,390	4,931	48,439	207,574	1,001,334	1,095,260	1,840,581	1,380,418	195,501	3,416,500	3.41
	July.	747,140	4,574	43,195	250,184	1,045,093	2,204,354	2,956,068	209,834	197,091	3,362,993	3.22
	Aug.	745,265	4,707	43,676	242,109	1,035,757	2,206,500	2,956,471	257,022	192,471	3,405,965	3.29
	Sep.	770,117	4,769	47,028	255,091	1,077,006	2,199,603	2,974,489	268,704	193,334	3,436,527	3.19
	Oct.	828,753	4,973	56,544	254,333	1,144,604	2,181,077	3,014,803	277,305	193,249	3,485,357	3.05
	Nov.	815,851	4,814	45,788	268,652	1,135,105	2,213,693	3,034,358	292,225	193,454	3,520,037	3.10
	Dec.	874,260	4,798	48,367	264,356	1,191,781	2,282,635	3,161,693	318,621	198,719	3,679,033	3.09
2007	Jan.	834,524	4,827	49,615	253,470	1,142,436	2,268,189	3,107,540	319,739	199,798	3,627,077	3.17
	Feb.	837,156	4,945	47,276	265,158	1,154,536	2,305,138	3,147,240	324,859	197,243	3,669,342	3.18
	Mar.	834,524	5,595	49,615	262,228	1,151,961	2,416,604	3,256,723	335,823	200,484	3,793,030	3.29
	Apr.	839,602	6,099	48,218	257,617	1,151,537	2,432,706	3,378,407	347,313	199,955	3,825,675	3.32

Note : The quarter end data relate to last working day whereas monthly data relate to last Saturday of the month Source: Monetary Policy Department.SBP  
As per BSD Circular No. 9 dated 18-7-2006, the amounts of Time Deposits with tenor of less than six months have been included to Demand Deposits from July 06.

1 Excluding IMF A/c Nos. 1 & 2, SAF loan account, counterpart funds, deposits of foreign central banks, foreign governments, international organizations and deposit money banks

2 Excluding inter-bank deposits and deposits of central & provincial governments and foreign constituents

## 2.5 Analysis of Causative Factors for Changes in Monetary Statistics

(Million Rupees)

	2003-04			2004-05		
	Jul.-Dec.	Jan.-Jun.	Total	Jul.-Dec.	Jan.-Jun.	Total
<b>1. Public Sector</b>	<b>(30,255)</b>	<b>88,361</b>	<b>58,106</b>	<b>30,549</b>	<b>65,237</b>	<b>95,785</b>
i) Budgetary support	(9,721)	73,420	63,699	25,421	46,375	71,796
ii) Commodity operations	(21,248)	13,074	(8,174)	3,797	18,166	21,963
iii) Effect of Zakat fund etc.	714	1,867	2,581	1,331	695	2,026
<b>2. Credit to Non-Government Sector (A+B+C)</b>	<b>151,313</b>	<b>164,095</b>	<b>315,408</b>	<b>268,907</b>	<b>149,792</b>	<b>418,699</b>
(A) Credit to private Sector	180,522	144,693	325,215	284,703	153,144	437,848
i) Commercial Banks	186,629	146,829	333,458	284,581	152,149	436,731
ii) Specialized Banks	(6,107)	(2,136)	(8,243)	122	995	1,117
(B) Credit to Public Sector Enterprise (PSEs)	(24,908)	21,991	(2,917)	(11,183)	(1,506)	(12,689)
i) Autonomous Bodies	(16,168)	(4,909)	(21,077)	(1,543)	(526)	(2,069)
ii) Others	(8,227)	29,693	21,466	(8,886)	(128)	(9,014)
iii) PSEs Special Account-Debt Replacement	(513)	(2,793)	(3,306)	(754)	(852)	(1,606)
(C) Other Financial Institutions (SBP Credit to NBFIs)	(4,301)	(2,589)	(6,891)	(4,613)	(1,847)	(6,460)
<b>3. Counterpart Funds</b>	<b>(21)</b>	<b>21</b>	<b>0</b>	<b>(21)</b>	<b>109</b>	<b>88</b>
<b>4. Other Items (net)</b>	<b>18,151</b>	<b>(27,339)</b>	<b>(9,188)</b>	<b>(58,244)</b>	<b>(30,281)</b>	<b>(88,525)</b>
<b>5. Domestic Credit Expansion (+) / Contraction (-) (1+2+3+4)</b>	<b>139,187</b>	<b>225,138</b>	<b>364,326</b>	<b>241,191</b>	<b>184,857</b>	<b>426,048</b>
<b>6. Foreign Assets (net)</b>	<b>48,272</b>	<b>(4,746)</b>	<b>43,526</b>	<b>3,302</b>	<b>50,446</b>	<b>53,748</b>
<b>7. Monetary Expansion ((5+6)</b>	<b>187,459</b>	<b>220,393</b>	<b>407,852</b>	<b>244,492</b>	<b>235,303</b>	<b>479,796</b>

	2006						
	Apr.	May	Jun.	Jul.	Aug.	Sep.	Oct.
<b>1. Public Sector</b>	<b>(7,748)</b>	<b>49,541</b>	<b>21,171</b>	<b>40,470</b>	<b>7,034</b>	<b>(5,281)</b>	<b>38,935</b>
i) Budgetary support(net)	(11,376)	13,125	7,967	36,110	4,702	(6,297)	44,302
ii) Commodity operations	3,358	36,448	13,156	3,869	2,767	(184)	(2,799)
iii) Effect of Zakat fund etc.	270	(32)	48	491	(436)	1201	(2,568)
<b>2. Credit to Non-Government Sector (A+B+C)</b>	<b>555</b>	<b>(2,312)</b>	<b>64,160</b>	<b>(12,646)</b>	<b>5,663</b>	<b>46,749</b>	<b>26,818</b>
A) Credit to private Sector	1,127	(1,881)	58,357	(12,021)	8,498	40,383	35,233
i) Commercial Banks	9,320	(5,247)	56,332	(15,136)	6,708	39,257	37,066
ii) Specialized Banks	(8,193)	3,365	2,025	3,115	1,790	1,126	(1,834)
B) Credit to Public Sector Enterprise (PSEs)	(572)	(470)	5,576	(825)	(2,835)	6,366	(8,415)
i) Autonomous Bodies	330	(1,250)	2,320	567	(3,548)	6,215	(2,055)
ii) Others	(870)	893	3,276	(1,392)	740	151	(6,333)
iii) PSEs Special Account-Debt Replacement	(32)	(114)	(20)	0	(28)	0	(27)
C) Other Financial Institutions (SBP Credit to NBFIs)	0	40	227	200	0	0	0
<b>3. Counterpart Funds</b>	<b>0</b>	<b>(2)</b>	<b>(7)</b>	<b>0</b>	<b>48</b>	<b>(59)</b>	<b>0</b>
<b>4. Other Items (net)</b>	<b>(4,451)</b>	<b>(11,131)</b>	<b>(4,855)</b>	<b>(44,832)</b>	<b>40,574</b>	<b>(919)</b>	<b>(26,925)</b>
<b>5. Domestic Credit Expansion (+) / Contraction (-) (1+2+3+4)</b>	<b>(11,644)</b>	<b>36,096</b>	<b>80,468</b>	<b>(17,008)</b>	<b>53,318</b>	<b>40,490</b>	<b>38,828</b>
<b>6. Foreign Assets (net)</b>	<b>54,306</b>	<b>877</b>	<b>11,896</b>	<b>(36,499)</b>	<b>(10,348)</b>	<b>(9,925)</b>	<b>10,001</b>
<b>7. Monetary Expansion (+) / Contraction (-)</b>	<b>42,662</b>	<b>36,973</b>	<b>92,364</b>	<b>(53,507)</b>	<b>42,970</b>	<b>30,565</b>	<b>48,829</b>

Note The composition of autonomous bodies has changed over the years. At present, WAPDA, OGDC, KESC, PTCL, PIA, and Pak. Steel are included in the autonomous bodies.

## 2.5 Analysis of Causative Factors for Changes in Monetary Statistics

(Million Rupees)

	2005-06			2006-07 <sup>P</sup>	
	Jul.-Dec.	Jan.-Jun.	Total	Jul.-Dec	Total
<b>Public Sector</b>	<b>68,930</b>	<b>21,836</b>	<b>90,766</b>	<b>15,576</b>	<b>15,576</b>
i) Budgetary support	84,881	(13,931)	70,950	32,909	32,909
ii) Commodity operations	(15,123)	35,048	19,926	(15,934)	(15,934)
iii) Effect of Zakat fund etc.	(829)	719	(110)	(1,400)	(1,400)
<b>Credit to Non-Government Sector (A+B+C)</b>	<b>294,145</b>	<b>114,255</b>	<b>408,401</b>	<b>251,333</b>	<b>251,333</b>
A) Credit to private Sector	297,651	104,146	401,797	250,782	250,782
i) Commercial Banks	295,864	121,548	417,411	248,065	248,065
ii) Specialized Banks	1,787	(17,402)	(15,615)	2,717	2,717
B) Credit to Public Sector Enterprise (PSEs)	(1,994)	9,636	7,643	(1,379)	(1,379)
i) Autonomous Bodies	(2,641)	7,396	4,755	4,475	4,475
ii) Others	(38)	2,437	2,399	(5,660)	(5,660)
iii) PSEs Special Account-Debt	686	(197)	489	(194)	(194)
(C) Other Financial Institutions ( SBP Credit to NBFIs )	(1,512)	473	(1,038)	1,930	1,930
<b>Counterpart Funds</b>	<b>14</b>	<b>(21)</b>	<b>(7)</b>	<b>34</b>	<b>34</b>
<b>Other Items (net)</b>	<b>(60,902)</b>	<b>(39,602)</b>	<b>(100,504)</b>	<b>(857)</b>	<b>(857)</b>
<b>Domestic Credit Expansion (+) / Contraction (-) (1+2+3+4)</b>	<b>302,188</b>	<b>96,468</b>	<b>398,656</b>	<b>266,087</b>	<b>266,087</b>
<b>Foreign Assets (net)</b>	<b>(66,670)</b>	<b>118,161</b>	<b>51,491</b>	<b>(3,553)</b>	<b>(3,553)</b>
<b>Monetary Expansion (5+6)</b>	<b>235,518</b>	<b>214,630</b>	<b>450,147</b>	<b>262,534</b>	<b>262,534</b>

	2006		2007			
	Nov.	Dec.	Jan.	Feb.	Mar.	Apr.
<b>Public Sector</b>	<b>(28,044)</b>	<b>(37,538)</b>	<b>(7,809)</b>	<b>23,694</b>	<b>38,929</b>	<b>45,091</b>
i) Budgetary support	(21,264)	(24,643)	1,163	32,874	49,652	49,149
ii) Commodity operations	(6,923)	(12,664)	(8,534)	(9,127)	(12,445)	(4,361)
iii) Effect of Zakat fund etc.	143	(230)	(439)	(53)	1,723	303
<b>Credit to Non-Government Sector (A+B+C)</b>	<b>60,300</b>	<b>124,450</b>	<b>(23,043)</b>	<b>(6,104)</b>	<b>48,165</b>	<b>7,651</b>
A) Credit to private Sector	60,749	117,940	(19,620)	(4,049)	44,706	1,964
i) Commercial Banks	61,213	118,957	(22,303)	(1,508)	45,870	2,802
ii) Specialized Banks	(464)	(1,017)	2,683	(2,541)	(1,164)	(838)
B) Credit to Public Sector Enterprise (PSEs)	(470)	4,800	(3,468)	(363)	3,488	5,569
i) Autonomous Bodies	(181)	3,476	(3,137)	629	1,013	5,674
ii) Others	(176)	1,350	(331)	(965)	2,475	(105)
iii) PSEs Special Account-Debt	(113)	(26)	0	(27)	0	0
(C) Other Financial Institutions ( SBP Credit to NBFIs )	21	1,709	45	(1,692)	(28)	118
<b>Counterpart Funds</b>	<b>53</b>	<b>(7)</b>	<b>0</b>	<b>(2)</b>	<b>5</b>	<b>0</b>
<b>Other Items (net)</b>	<b>5,647</b>	<b>25,598</b>	<b>(42,562)</b>	<b>2,941</b>	<b>312</b>	<b>(29,786)</b>
<b>Domestic Credit Expansion (+) / Contraction (-) (1+2+3+4)</b>	<b>37,955</b>	<b>112,503</b>	<b>(73,415)</b>	<b>20,528</b>	<b>87,411</b>	<b>22,956</b>
<b>Foreign Assets (net)</b>	<b>(3,276)</b>	<b>46,494</b>	<b>24,272</b>	<b>18,923</b>	<b>36,277</b>	<b>9,689</b>
<b>Monetary Expansion (+) /Contraction (-) (5+6)</b>	<b>34,680</b>	<b>158,997</b>	<b>(49,143)</b>	<b>39,451</b>	<b>123,688</b>	<b>32,645</b>

Source: Monetary .Policy.Department.SBP

## 2.6 Liabilities and Assets of the State Bank of Pakistan Issue Department

(Million Rupees)

Last Saturday/ Last working day	LIABILITIES			ASSETS					Rupee Coins / Notes
	Notes held in the Banking Department	Notes in Circulation	Total Liabilities / Assets	Gold and Foreign Assets			Total		
				(1) Gold Coins and Bullion	(2) Approved Foreign Exchange	(3) India Notes			
2002	Jun.	126.6	458,247.9	<b>458,374.5</b>	39,378.2	245,300.3	528.6	285,207.2	1,738.0
	Dec.	168.9	511,118.2	<b>511,287.1</b>	39,378.2	398,620.2	528.6	438,527.1	1,950.7
2003	Jun.	214.2	522,676.9	<b>522,891.1</b>	41,246.5	459,116.6	535.2	500,898.3	2,351.1
	Dec.	125.8	595,159.2	<b>595,285.0</b>	41,257.0	514,517.5	535.2	556,309.6	2,434.6
2004	Jun.	160.8	611,742.9	<b>611,903.7</b>	47,532.1	514,138.8	543.8	562,214.7	2,799.2
	Dec.	126.0	690,946.2	<b>691,072.2</b>	47,532.1	434,236.5	543.8	482,312.4	3,067.7
2005	Jun.	145.6	705,720.1	<b>705,865.7</b>	53,870.0	484,308.4	593.0	538,771.4	2,961.2
	Dec.	156.6	769,617.5	<b>769,774.1</b>	53,870.0	426,373.5	593.0	480,836.5	2,469.6
2006	Jun.	139.3	784,235.9	<b>784,375.2</b>	76,317.3	567,347.6	562.6	644,227.4	2,865.5
	Dec.	140.9	917,808.9	<b>917,949.9</b>	76,317.3	561,728.7	562.6	638,608.5	2,640.0
2006	Apr.	173.4	783,483.5	<b>783,656.9</b>	53,870.0	548,304.1	593.0	602,767.1	2,652.3
	May	130.7	794,210.4	<b>794,341.1</b>	53,870.0	559,218.8	593.0	613,681.8	2,636.5
	Jun.	139.3	784,235.9	<b>784,375.2</b>	76,317.3	567,347.6	562.6	644,227.4	2,865.5
	Jul.	133.3	785,680.0	<b>785,813.3</b>	76,317.3	543,840.4	562.6	620,720.3	2,803.4
	Aug.	127.7	784,281.1	<b>784,408.9</b>	76,317.3	536,811.8	562.6	613,691.7	2,799.1
	Sep.	223.3	812,447.7	<b>812,671.0</b>	76,317.3	512,204.2	562.6	589,084.0	2,761.2
	Oct.	170.9	880,553.3	<b>880,724.2</b>	76,317.3	524,552.4	562.6	601,432.1	2,714.4
	Nov.	129.7	856,833.4	<b>856,963.1</b>	76,317.3	533,949.8	562.6	610,829.7	2,653.3
	Dec.	140.9	917,808.9	<b>917,949.9</b>	76,317.3	561,728.7	562.6	638,608.5	2,640.0
	2007	Jan.	157.3	880,468.5	<b>880,625.8</b>	76,317.3	556,452.6	562.6	633,332.5
Feb.		205.1	879,550.4	<b>879,755.6</b>	76,317.3	572,211.3	562.6	649,091.2	2,945.7
Mar.		198.2	879,275.0	<b>879,473.0</b>	76,317.3	594,167.0	562.6	671,046.9	2,963.5
Apr.		199.4	882,947.4	<b>883,146.8</b>	76,317.3	613,538.4	562.6	690,418.2	2,937.0



## 2.6 Liabilities and Assets of the State Bank of Pakistan Issue Department

(Million Rupees)

Last Saturday/ Last working day	ASSETS								
	Domestic Assets				With Reserve Bank of India pending transfer to Pakistan				
	Govt. of Pakistan Securities	Exchange & other Commercial Papers	Bills of	Total	Gold Coins and Bullion	Sterling Securities	Govt. of India Securities	Rupee Coin	Total
2002	Jun.	170,389.5	78.5	172,206.0	642.1	303.2	12.4	3.7	961.3
	Dec.	69,769.6	78.5	71,798.8	642.1	303.2	12.4	3.7	961.3
2003	Jun.	18,558.7	78.5	20,988.3	671.7	316.5	12.6	3.7	1,004.5
	Dec.	35,457.8	78.5	37,970.9	671.7	316.5	12.6	3.7	1,004.5
2004	Jun.	45,671.5	78.5	48,549.2	773.1	350.1	12.8	3.8	1,139.8
	Dec.	204,473.9	78.5	207,620.1	773.1	350.1	12.8	3.8	1,139.8
2005	Jun.	162,802.6	78.5	165,842.3	876.2	357.8	13.9	4.1	1,252.0
	Dec.	285,137.5	78.5	287,685.7	876.2	357.8	13.9	4.1	1,252.0
2006	Jun.	135,585.4	78.5	138,529.4	1,240.4	360.9	13.2	3.9	1,618.4
	Dec.	275,004.4	78.5	277,722.9	1,240.4	360.9	13.2	3.9	1,618.4
2006	Apr.	176,907.0	78.5	179,637.8	876.2	357.8	13.9	4.1	1,252.0
	May	176,692.3	78.5	179,407.3	876.2	357.8	13.9	4.1	1,252.0
	Jun.	135,585.4	78.5	138,529.4	1,240.4	360.9	13.2	3.9	1,618.4
	Jul.	160,592.6	78.5	163,474.6	1,240.4	360.9	13.2	3.9	1,618.4
	Aug.	166,221.2	78.5	169,098.8	1,240.4	360.9	13.2	3.9	1,618.4
	Sep.	219,128.9	78.5	221,968.6	1,240.4	360.9	13.2	3.9	1,618.4
	Oct.	274,880.8	78.5	277,673.6	1,240.4	360.9	13.2	3.9	1,618.4
	Nov.	241,783.2	78.5	244,515.0	1,240.4	360.9	13.2	3.9	1,618.4
	Dec.	275,004.4	78.5	277,722.9	1,240.4	360.9	13.2	3.9	1,618.4
2007	Jan.	242,980.4	78.5	245,674.9	1,240.4	360.9	13.2	3.9	1,618.4
	Feb.	226,021.7	78.5	229,045.9	1,240.4	360.9	13.2	3.9	1,618.4
	Mar.	203,766.0	78.5	206,808.0	1,240.4	360.9	13.2	3.9	1,618.4
	Apr.	188,094.7	78.5	191,110.1	1,240.4	360.9	13.2	3.9	1,618.4

1 Gold is valued at end financial year (June ) on the basis of closing London Market Rate.

Source: Finance Department SBP

2 Approved Foreign Exchanges includes SDR held with IMF w.e.f June 2004

3 Receivable from Reserve Bank of India.

## 2.7 Liabilities and Assets of the State Bank of Pakistan Banking Department

(Million Rupees)

		L I A B I L I T I E S												
		L o a n s							D e p o s i t s					
Last Saturday/ Last working day		Capital	Reserve	Rural	Industrial	Export	Loans	Housing	Federal	Provincial			Total	
		Paid-up	Fund	Credit	Credit	Credit	Guar- antee	Credit	Govt.	Govts.	Banks	Others		
				Fund	Fund	Fund	Fund	Fund						
2002	Jun.	100.0	5,400.0	2,600.0	1,600.0	1,500.0	900.0	4,700.0	16,032.7	27,073.8	110,522.1	284,048.2	437,676.9	
	Dec.	100.0	5,400.0	2,600.0	1,600.0	1,500.0	900.0	4,700.0	57,236.1	24,906.5	125,151.8	272,112.1	479,406.5	
2003	Jun.	100.0	5,414.5	2,600.0	1,600.0	1,500.0	900.0	4,700.0	36,841.9	32,836.0	140,989.7	285,682.1	496,349.7	
	Dec.	100.0	5,414.5	2,600.0	1,600.0	1,500.0	900.0	4,700.0	23,879.4	30,664.6	145,224.3	282,551.3	482,319.6	
2004	Jun.	100.0	5,414.5	2,600.0	1,600.0	1,500.0	900.0	4,700.0	2,681.5	34,207.5	156,204.2	273,562.7	466,655.8	
	Dec.	100.0	5,414.5	2,600.0	1,600.0	1,500.0	900.0	4,700.0	2,272.7	44,738.5	196,347.7	290,348.5	533,707.4	
2005	Jun.	100.0	5,414.5	2,600.0	1,600.0	1,500.0	900.0	4,700.0	47,286.1	45,632.0	196,302.3	273,550.2	562,770.6	
	Dec.	100.0	15,414.5	2,600.0	1,600.0	1,500.0	900.0	4,700.0	86,850.0	58,127.1	207,749.7	273,412.8	626,139.6	
2006	Jun.	100.0	15,414.5	2,600.0	1,600.0	1,500.0	900.0	4,700.0	69,952.5	66,644.6	207,574.3	273,897.5	618,068.8	
	Dec.	100.0	34,556.5	2,600.0	1,600.0	1,500.0	900.0	4,700.0	49,197.5	50,380.5	264,356.0	272,486.9	636,420.8	
2006	Apr.	100.0	15,414.5	2,600.0	1,600.0	1,500.0	900.0	4,700.0	80,353.4	63,827.8	197,523.3	274,271.3	615,975.8	
	May	100.0	15,414.5	2,600.0	1,600.0	1,500.0	900.0	4,700.0	76,583.3	50,727.4	198,059.5	274,866.7	600,236.9	
	Jun.	100.0	15,414.5	2,600.0	1,600.0	1,500.0	900.0	4,700.0	69,952.5	66,644.6	207,574.3	273,897.5	618,068.8	
	Jul.	100.0	15,414.5	2,600.0	1,600.0	1,500.0	900.0	4,700.0	71,714.5	47,855.2	250,184.1	272,349.8	642,103.6	
	Aug.	100.0	15,414.5	2,600.0	1,600.0	1,500.0	900.0	4,700.0	72,395.4	45,241.8	242,112.3	272,731.8	632,481.3	
	Sep.	100.0	15,414.5	2,600.0	1,600.0	1,500.0	900.0	4,700.0	59,763.3	74,518.7	255,091.1	272,770.7	662,143.9	
	Oct.	100.0	15,414.5	2,600.0	1,600.0	1,500.0	900.0	4,700.0	58,508.5	36,969.7	254,333.5	271,687.2	621,498.8	
	Nov.	100.0	34,556.5	2,600.0	1,600.0	1,500.0	900.0	4,700.0	63,303.9	36,571.7	268,652.4	271,775.4	640,303.4	
	Dec.	100.0	34,556.5	2,600.0	1,600.0	1,500.0	900.0	4,700.0	49,197.5	50,380.5	264,356.0	272,486.9	636,420.8	
	2007	Jan.	100.0	34,556.5	2,600.0	1,600.0	1,500.0	900.0	4,700.0	69,150.6	48,818.9	253,470.1	271,333.4	642,773.0
		Feb.	100.0	34,556.5	2,600.0	1,600.0	1,500.0	900.0	4,700.0	49,844.9	55,092.6	265,158.4	271,517.9	641,613.8
		Mar.	100.0	34,556.5	2,600.0	1,600.0	1,500.0	900.0	4,700.0	34,563.4	92,483.1	262,228.0	272,614.2	661,888.7
Apr.		100.0	34,556.5	2,600.0	1,600.0	1,500.0	900.0	4,700.0	59,675.6	48,701.0	257,617.3	272,742.9	638,736.8	

## 2.7 Liabilities and Assets of the State Bank of Pakistan Banking Department

(Million Rupees)

Last Saturday/ Last working day		LIABILITIES					A S S E T S				
		Allocation of Special Drawing Rights	Bills Payable	Re- valuation Accounts	Other Liabi- lities	Total Liabilities/ Assets	Notes and Coins <sup>1</sup>	Bills Purchased and Discounted			Govt. Treasury Bills
								Internal		Export Sector	
2002	Jun.	1,526.0	323.3	37,033.3	57,967.6	<b>551,327.0</b>	126.7	3.6	33.4	37.0	10,064.0
	Dec.	1,526.0	190.7	37,033.3	40,647.9	<b>575,604.5</b>	168.9	3.6	33.4	37.0	22,650.0
2003	Jun.	1,526.0	671.9	38,883.2	35,628.3	<b>589,873.6</b>	214.3	3.6	33.4	37.0	-
	Dec.	1,526.0	143.0	38,883.2	33,967.6	<b>573,653.9</b>	125.8	3.6	33.4	37.0	-
2004	Jun.	1,526.0	494.4	45,205.6	38,946.0	<b>569,642.3</b>	160.8	3.6	33.4	37.0	-
	Dec.	1,526.0	251.0	45,205.6	57,064.6	<b>654,569.0</b>	126.0	3.6	33.4	37.0	-
2005	Jun.	1,526.0	1,099.7	51,646.6	54,792.1	<b>688,649.3</b>	145.6	3.6	33.4	37.0	-
	Dec.	1,526.0	118.5	51,646.6	87,784.8	<b>794,029.9</b>	156.6	3.6	33.4	37.0	-
2006	Jun.	1,526.0	472.7	74,406.9	183,199.2	<b>904,488.6</b>	139.3	3.6	33.4	37.0	-
	Dec.	1,526.0	152.8	74,406.9	112,684.2	<b>871,147.1</b>	140.9	3.6	33.4	37.0	-
2006	Apr.	1,526.0	211.1	51,646.6	97,316.1	<b>793,490.1</b>	173.4	3.6	33.4	37.0	-
	May	1,526.0	137.2	51,646.6	108,342.4	<b>788,703.6</b>	130.7	3.6	33.4	37.0	-
	Jun.	1,526.0	472.7	74,406.9	183,199.2	<b>904,488.6</b>	139.3	3.6	33.4	37.0	-
	Jul.	1,526.0	221.9	74,406.9	129,996.3	<b>875,069.2</b>	133.3	3.6	33.4	37.0	-
	Aug.	1,526.0	245.6	74,406.9	173,120.9	<b>908,595.1</b>	127.7	3.6	33.4	37.0	-
	Sep.	1,526.0	151.7	74,406.9	163,713.4	<b>928,756.3</b>	223.3	3.6	33.4	37.0	-
	Oct.	1,526.0	149.5	74,406.9	166,445.5	<b>890,841.1</b>	170.9	3.6	33.4	37.0	-
	Nov.	1,526.0	161.8	74,406.9	98,450.1	<b>860,804.6</b>	129.7	3.6	33.4	37.0	-
	Dec.	1,526.0	152.8	74,406.9	112,684.2	<b>871,147.1</b>	140.9	3.6	33.4	37.0	-
	2007	Jan.	1,526.0	180.8	74,406.9	153,571.1	<b>918,414.2</b>	157.3	3.6	33.4	37.0
Feb.	1,526.0	574.6	74,406.9	118,738.1	<b>882,815.7</b>	205.1	3.6	33.4	37.0	-	
Mar.	1,526.0	244.2	74,406.9	151,358.5	<b>935,380.7</b>	198.2	3.6	33.4	37.0	-	
Apr.	1,526.0	182.4	74,406.9	135,794.9	<b>896,603.6</b>	199.4	3.6	33.4	37.0	-	

<sup>1</sup> Includes all coins of various denominations

(Contd.)

## 2.7 Liabilities and Assets of the State Bank of Pakistan Banking Department

(Million Rupees)

		A S S E T S									
Last Saturday/ Last working day		Balance held			Loans and Advances to Scheduled Banks					Total (a)	
		outside Pakistan	SDR held with IMF	Govt. Debtor Balances	Agri- cultural Sector	Indus- trial Sector	Export Sector	Housing Sector	Others		
2002	Jun.	42,454.3	509.6	953.9	55,163.8	3,415.1	59,547.8	66.9	25,408.2	143,601.8	
	Dec.	71,916.8	123.9	-	54,137.6	3,021.3	45,859.8	66.9	18,074.3	121,160.0	
2003	Jun.	104,384.6	14,092.1	-	55,686.8	2,800.3	56,780.4	66.9	15,214.1	130,548.5	
	Dec.	104,834.5	14,136.1	319.3	55,353.1	2,563.9	77,303.2	66.9	13,992.6	149,279.7	
2004	Jun.	132,021.4	-	5,533.1	58,005.3	2,328.8	88,292.3	66.9	13,194.5	161,887.8	
	Dec.	147,057.8	2,284.8	7,241.5	60,737.4	1,169.4	102,522.5	-	9,179.9	173,609.2	
2005	Jun.	139,513.0	1,774.6	10,814.0	59,753.3	1,498.5	109,446.9	-	11,288.6	181,987.3	
	Dec.	167,964.8	1,370.3	14,503.1	63,627.6	3,066.9	106,386.3	-	13,102.5	186,183.4	
2006	Jun.	121,824.0	1,088.6	16,404.3	62,194.7	7,297.3	107,982.2	-	16,104.3	193,578.5	
	Dec.	128,433.7	758.6	6,560.1	63,183.5	41,382.5	131,733.6	-	14,416.2	250,715.8	
2006	Apr.	132,237.9	1,359.8	14,802.1	61,650.9	6,113.7	109,030.1	-	16,102.5	192,897.2	
	May	120,549.9	1,314.4	15,724.8	61,644.0	6,337.3	108,990.0	-	16,102.5	193,073.8	
	Jun.	121,824.0	1,088.6	16,404.3	62,194.7	7,297.3	107,982.2	-	16,104.3	193,578.5	
	Jul.	121,226.2	1,089.4	18,146.9	58,194.7	7,320.8	109,639.5	-	16,104.3	191,259.4	
	Aug.	124,946.2	1,024.5	18,444.9	62,689.7	7,415.8	104,373.7	-	16,104.3	190,583.6	
	Sep.	146,018.1	1,023.4	15,733.1	62,689.7	8,182.1	110,708.9	-	14,416.3	195,997.0	
	Oct.	138,758.5	1,022.6	17,213.0	62,682.8	13,283.8	118,855.9	-	14,416.3	209,238.9	
	Nov.	129,613.4	964.7	15,450.8	63,182.8	21,745.3	123,659.5	-	14,416.2	223,003.9	
	Dec.	128,433.7	758.6	6,560.1	63,183.5	41,382.5	131,733.6	-	14,416.2	250,715.8	
	2007	Jan.	129,307.8	753.5	8,162.8	59,183.5	41,618.9	133,621.2	-	14,418.2	248,841.8
		Feb.	138,013.0	687.6	14,645.0	59,183.5	42,046.9	135,467.9	-	14,418.2	251,116.5
		Mar.	137,224.5	692.0	9,533.7	60,183.5	41,462.6	135,736.4	-	14,418.2	251,800.7
Apr.		125,611.0	704.4	12,722.1	60,183.5	41,776.6	138,364.0	-	14,418.2	254,742.3	

## 2.7 Liabilities and Assets of the State Bank of Pakistan Banking Department

(Concl'd.)  
(Million Rupees)

Last Saturday/ Last working day		A S S E T S											
		Loans and Advances to Non-Bank Financial Institutions				Other Loans		I n v e s t m e n t s					Other Assets
		Indus- trial Sector	Housing Sector	Others	Total (b)	And Advances (a+b)	Sche- duled Banks	Non-Bank Financial Institutions	Govt. Securities	Others	Total		
2002	Jun.	6,268.2	15,257.3	13,455.0	34,980.5	178,582.3	52,086.6	2,739.5	148,060.8	768.5	203,655.3	114,943.9	
	Dec.	6,152.3	15,257.3	8,537.5	29,947.1	151,107.1	39,326.5	2,497.1	111,276.8	926.1	154,026.5	175,574.4	
2003	Jun.	5,191.0	14,157.3	8,037.5	27,385.8	157,934.3	38,954.7	2,497.1	91,753.6	907.6	134,112.9	179,098.3	
	Dec.	4,440.4	13,857.3	4,786.7	23,084.4	172,364.1	38,954.7	2,497.1	36,747.5	907.6	79,106.9	202,730.2	
2004	Jun.	4,418.0	12,607.3	4,219.8	21,245.1	183,132.9	34,000.8	1,747.1	87,524.9	1,291.2	124,564.0	124,193.1	
	Dec.	608.1	12,607.3	3,416.7	16,632.1	190,241.3	34,000.8	1,747.1	149,989.0	1,331.2	187,068.1	120,512.6	
2005	Jun.	595.0	11,242.3	3,416.7	15,254.0	197,241.4	28,273.8	1,673.4	168,392.0	933.5	199,272.6	139,850.8	
	Dec.	358.3	11,242.3	2,141.7	13,742.3	199,925.7	28,273.8	1,673.4	249,452.0	890.9	280,290.1	129,782.4	
2006	Jun.	831.7	11,242.3	2,141.7	14,215.7	207,794.2	24,664.3	1,673.4	380,997.3	1,043.2	408,378.1	148,823.1	
	Dec.	2,832.0	11,242.3	2,071.7	16,146.0	266,861.8	25,104.3	1,673.4	292,215.7	1,029.5	320,022.9	148,332.1	
2006	Apr.	564.3	11,242.3	2,141.7	13,948.3	206,845.5	25,751.5	1,673.4	256,981.2	919.9	285,326.0	152,708.3	
	May	603.3	11,242.3	2,141.7	13,987.3	207,061.1	25,751.5	1,673.4	259,554.7	919.9	287,899.5	155,985.2	
	Jun.	831.7	11,242.3	2,141.7	14,215.7	207,794.2	24,664.3	1,673.4	380,997.3	1,043.2	408,378.1	148,823.1	
	Jul.	1,031.9	11,242.3	2,141.7	14,416.0	205,675.4	24,664.3	1,673.4	352,365.6	1,043.2	379,746.4	149,014.6	
	Aug.	1,031.9	11,242.3	2,141.7	14,416.0	204,999.6	24,664.3	1,673.4	379,109.5	1,043.2	406,490.3	152,525.0	
	Sep.	1,031.9	11,242.3	2,141.7	14,416.0	210,413.0	24,664.3	1,673.4	357,144.0	1,043.2	384,524.8	170,783.6	
	Oct.	1,031.9	11,242.3	2,141.7	14,416.0	223,654.9	24,664.3	1,673.4	315,611.2	1,029.5	342,978.4	167,005.9	
	Nov.	1,122.5	11,242.3	2,071.7	14,436.5	237,440.4	25,104.3	1,673.4	298,783.2	1,029.5	326,590.4	150,578.2	
	Dec.	2,832.0	11,242.3	2,071.7	16,146.0	266,861.8	25,104.3	1,673.4	292,215.7	1,029.5	320,022.9	148,332.1	
2007	Jan.	2,876.8	11,242.3	2,071.7	16,190.8	265,031.8	25,104.3	1,673.4	322,760.7	987.0	350,525.3	164,437.9	
	Feb.	2,711.4	11,242.3	545.0	14,498.7	265,615.2	25,104.3	1,673.4	284,163.3	987.0	311,927.9	151,684.9	
	Mar.	2,788.1	11,242.3	-	14,030.4	265,831.1	24,664.3	2,113.4	342,535.0	1,033.2	370,345.9	151,518.4	
	Apr.	2,906.2	11,242.3	-	14,148.5	268,890.8	24,664.3	2,113.4	306,639.3	1,019.6	334,436.5	154,002.5	

Source: Finance Department SBP

## 2.8 Scheduled Bank's Consolidated Position

Based on weekly position Liabilities & Assets (All Banks)

(Million Rupees)

Last Saturday/ Last working day	Capital (Paid-up) and Reserves	DEMAND LIABILITIES IN PAKISTAN						TIME LIABILITIES IN PAKISTAN				
		Inter-Bank			Others			Inter-Bank		Others		
		Borrow- ings	Deposits	Total	Deposits (General)	Others	Borrow- ings	Deposits	Deposits (General)	Others	Total	
2000	Jun.	79,648	43	8,537	475,281	47,420	531,281	5,674	626	652,279	10,759	669,338
	Dec.	78,399	40	10,019	482,128	45,485	537,672	4,942	1,434	674,187	8,741	689,304
2001	Jun.	88,581	34	12,248	527,672	42,870	582,824	3,668	1,037	712,978	9,494	727,177
	Dec.	93,969	21	9,781	549,393	44,731	603,926	2,979	1,591	748,101	9,740	762,411
2002	Jun.	85,886	10	13,251	609,657	47,333	670,251	659	1,445	803,749	12,808	818,661
	Dec.	91,210	2	10,293	662,263	68,095	740,653	915	4,713	853,250	16,830	875,708
2003	Jun.	112,230	1	9,936	785,333	53,352	848,622	621	3,370	903,153	16,020	923,164
	Dec.	108,962	1	11,771	886,895	62,776	961,443	2,573	2,051	918,141	16,872	939,637
2004	Jun.	131,225	15	20,740	1,014,947	56,532	1,092,234	1,878	2,928	1,026,919	20,703	1,052,428
	Dec.	160,644	27	18,680	1,124,763	61,914	1,205,384	1,082	3,655	1,079,464	24,853	1,109,054
2005	Jun.	190,652	99	22,894	1,211,674	70,107	1,304,774	1,024	9,732	1,231,745	27,288	1,269,789
2004	Jun.	131,225	15	20,740	1,014,947	56,532	1,092,234	1,878	2,928	1,026,919	20,703	1,052,428
	Jul.	125,988	15	10,333	1,033,788	55,215	1,099,351	1,784	4,689	1,017,808	20,924	1,045,205
	Aug.	143,152	21	9,009	1,029,154	55,351	1,093,535	1,761	5,494	1,030,830	22,814	1,060,899
	Sep.	146,756	21	9,200	1,034,796	55,984	1,100,001	2,008	2,930	1,038,510	23,960	1,067,408
	Oct.	151,749	634	11,544	1,046,072	58,400	1,116,650	1,252	2,651	1,018,650	26,362	1,048,915
	Nov.	152,250	27	10,565	1,047,137	56,665	1,114,394	1,780	2,349	1,045,379	24,509	1,074,017
	Dec.	160,644	27	18,680	1,124,763	61,914	1,205,384	1,082	3,655	1,079,464	24,853	1,109,054
2005	Jan.	162,814	42	13,010	1,091,933	59,720	1,164,705	1,057	5,755	1,063,362	24,109	1,094,283
	Feb.	175,045	192	11,565	1,129,538	60,393	1,201,688	1,057	6,948	1,079,012	24,100	1,111,117
	Mar.	177,015	42	11,535	1,169,700	65,469	1,246,746	1,338	8,747	1,103,382	19,310	1,132,777
	Apr.	184,926	87	11,201	1,147,864	61,630	1,220,782	3,212	8,327	1,142,154	25,820	1,179,513
	May	174,433	87	11,807	1,158,310	64,863	1,235,067	3,107	6,729	1,161,737	26,210	1,197,783
	Jun.	190,652	99	22,894	1,211,674	70,107	1,304,774	1,024	9,732	1,231,745	27,288	1,269,789

## 2.8 Scheduled Bank's Consolidated Position

Based on weekly position Liabilities & Assets (All Banks)

(Million Rupees)

Last Saturday/ Last working day	Total Demand and Time Liabilities (a)	Borrowings from State Bank of Pakistan	Borrowings from Banks Abroad	Money at Call and Short Notice in Pakistan	Other Liabilities	Total Liabilities	STATUTORY RESERVES <sup>1</sup>		
							On Demand Liabilities	On Time Liabilities	Total (b)
2000 Jun.	1,200,619	141,016	22,907	42,469	319,914	1,806,573	28,688	33,467	62,155
Dec.	1,226,976	144,758	35,798	30,885	384,297	1,901,113	28,428	34,465	62,893
2001 Jun.	1,310,001	139,367	15,169	30,293	400,517	1,983,928	30,656	36,359	67,015
Dec.	1,366,337	119,490	16,387	40,202	499,795	2,136,180	32,206	38,121	70,327
2002 Jun.	1,488,912	135,556	12,642	31,877	546,159	2,301,032	35,106	40,933	76,039
Dec.	1,616,361	136,900	14,690	26,257	650,077	2,535,495	38,346	43,785	82,131
2003 Jun.	1,771,786	137,882	21,243	28,551	468,312	2,540,004	43,859	46,158	90,017
Dec.	1,901,080	153,259	21,470	19,655	516,538	2,720,964	49,055	46,982	96,037
2004 Jun.	2,144,662	162,335	9,872	27,479	527,452	3,003,025	55,986	52,621	108,607
Dec.	2,314,438	176,354	14,248	28,912	580,366	3,274,962	61,715	55,453	117,168
2005 Jun.	2,574,563	185,068	6,245	22,243	645,616	3,624,387	66,351	63,489	129,840
2004 Jun.	2,144,662	162,335	9,872	27,479	527,452	3,003,025	55,986	52,621	108,607
Jul.	2,144,556	159,568	3,736	30,395	543,204	3,007,447	56,487	52,260	108,747
Aug.	2,154,434	152,699	7,095	37,484	566,131	3,060,995	56,551	530,45	109,596
Sep.	2,167,409	163,924	8,405	31,868	564,053	3,082,415	56,593	53,370	109,963
Oct.	2,165,565	169,058	11,317	35,095	575,352	3,108,136	57,587	52,446	110,033
Nov.	2,188,411	170,340	6,073	32,571	573,785	3,123,430	57,348	53,701	111,049
Dec.	2,314,438	176,354	14,248	28,912	580,366	3,274,962	61,715	55,453	117,168
2005 Jan.	2,258,988	175,682	5,786	30,336	577,668	3,211,274	59,752	54,714	114,466
Feb.	2,312,805	175,563	5,674	32,505	598,978	3,300,570	61,710	55,556	117,266
Mar.	2,379,523	179,138	7,693	31,988	608,926	3,384,283	63,937	56,639	120,576
Apr.	2,400,295	188,433	5,993	25,313	617,621	3,422,581	62,305	58,976	121,281
May	2,432,850	188,201	5,983	23,631	629,508	3,454,606	59,889	62,935	122,824
Jun.	2,574,563	185,068	6,245	22,243	645,616	3,624,387	66,351	63,489	129,840

<sup>1</sup> The Statutory Reserves requirements stood at 5% of Demand and Time Liabilities up to 6<sup>th</sup> Oct. 2000, thereafter at 7% up to 14<sup>th</sup> Dec. 2000 and again at 5% w.e.f. 15-12-2000.

(Contd.)

## 2.8 Scheduled Bank's Consolidated Position

Based on weekly position Liabilities & Assets (All Banks)

(Million Rupees)

Last Saturday/ Last working day	BALANCES			Money at Call & Short Notice in		FOREIGN CURRENCY			ADVANCES			Bills Purchased & Discounted (ii)
	Cash in Pakistan (c)	With SBP (d)	Others (e)	Pakistan (f)	as % of (a)	Held in Pakistan	with Banks Abroad	Total	To Banks	To Others	Total (i)	
2000 Jun.	19,468	153,371	18,250	43,509	19.5	2,222	46,619	48,841	5,788	801,154	806,942	69,554
Dec.	20,196	68,418	19,351	32,222	11.4	3,594	54,901	58,495	4,841	869,336	874,177	71,089
2001 Jun.	19,178	147,962	18,033	31,179	16.5	4,788	70,856	75,644	3,657	866,490	870,147	75,504
Dec.	21,225	157,132	19,301	42,659	17.6	4,200	76,184	80,384	3,490	894,602	898,092	73,776
2002 Jun.	26,414	124,883	27,268	32,831	14.2	5,003	89,416	94,419	1,626	894,524	896,150	75,588
Dec.	25,510	125,351	27,390	27,291	12.7	5,435	56,272	61,707	715	942,238	942,953	73,463
2003 Jun.	30,415	140,077	31,306	28,686	13.0	5,435	68,578	74,013	253	988,572	988,825	80,687
Dec.	30,273	145,475	29,129	22,729	12.1	8,214	51,097	59,311	197	1,110,553	1,110,750	86,364
2004 Jun.	36,432	151,406	36,762	30,444	11.9	4,806	60,976	65,782	63	1,258,022	1,258,085	99,924
Dec.	38,836	194,949	39,987	29,636	13.1	6,341	146,708	153,049	130	1,525,213	1,525,343	104,002
2005 Jun.	43,462	188,092	49,021	22,166	11.8	6,777	116,627	123,404	190	1,680,491	1,680,681	120,480
2004 Jun.	36,432	151,406	36,762	30,444	11.9	4,806	60,976	65,782	63	1,258,022	1,258,085	99,924
Jul.	32,929	166,428	26,850	33,379	12.1	5,136	77,176	82,312	65	1,250,323	1,250,388	96,767
Aug.	32,349	170,936	26,995	39,888	12.5	4,998	93,424	98,422	66	1,268,288	1,268,354	96,567
Sep.	35,005	187,963	26,904	34,041	13.1	5,007	99,127	104,134	69	1,314,261	1,314,330	101,746
Oct.	37,040	159,031	27,626	35,846	12.0	5,195	124,045	129,240	68	1,371,404	1,371,472	102,013
Nov.	36,744	166,054	26,176	33,220	12.0	6,710	132,171	138,881	223	1,414,350	1,414,573	101,159
Dec.	38,836	194,949	39,987	29,636	13.1	6,341	146,708	153,049	130	1,525,213	1,525,343	104,002
2005 Jan.	38,802	173,345	29,226	30,581	12.0	7,764	131,762	139,526	77	1,534,011	1,534,088	103,491
Feb.	35,678	173,434	30,953	32,794	11.8	7,659	132,037	139,696	164	1,548,889	1,549,053	108,004
Mar.	43,914	171,635	32,544	31,471	11.7	6,384	127,079	133,463	135	1,594,874	1,595,009	116,036
Apr.	38,291	171,913	32,378	24,836	11.1	5,487	133,269	138,756	161	1,604,839	1,605,000	115,973
May	37,254	179,456	34,826	23,791	11.3	6,342	125,906	132,248	175	1,636,208	1,636,383	115,866
Jun.	43,462	188,092	49,021	22,166	11.8	6,777	116,627	123,404	190	1,680,491	1,680,681	120,480



## 2.8 Scheduled Bank's Consolidated Position <sup>1</sup>

Based on weekly position Liabilities & Assets (All Banks)

(Concl'd.)

(Million Rupees)

Last Saturday/ Last working day	BANK CREDIT		INVESTMENT IN SECURITIES & SHARES						Total (h)	as % of (a)	Others Assets	Advance Tax Paid	Fixed Assets	Total Assets	Excess Reserves (d) - (b)
	Total (i) + (ii) (g)	(g) as % of (a)	Federal Govt. Securities	Provincial Govts. Securities	Treasury Bills	Others	Total (h)								
2000 Jun.	876,496	73.0	115,536	1,730	103,790	65,993	287,049	23.9	257,054	72,941	29,594	<b>1,806,573</b>	91,216		
Dec.	945,266	77.0	117,127	1,836	135,711	65,377	320,051	26.1	331,575	75,239	30,300	<b>1,901,113</b>	5,525		
2001 Jun.	945,651	72.2	101,161	1,836	123,889	70,048	296,934	22.7	340,220	78,205	30,922	<b>1,983,928</b>	80,947		
Dec.	971,868	71.1	118,446	1,728	118,446	74,811	313,431	22.9	418,091	81,070	31,019	<b>2,136,180</b>	86,805		
2002 Jun.	971,738	65.3	154,292	1,728	231,507	83,493	471,020	31.6	456,377	64,270	31,812	<b>2,301,032</b>	48,844		
Dec.	1,016,416	62.9	172,034	1,515	345,856	91,679	611,084	37.8	545,617	60,082	35,047	<b>2,535,495</b>	43,220		
2003 Jun.	1,069,512	60.4	191,709	1,234	412,449	118,234	723,626	40.8	353,842	49,789	38,738	<b>2,540,004</b>	50,060		
Dec.	1,197,114	63.0	216,142	182	416,932	125,817	759,073	39.9	382,802	53,388	41,670	<b>2,720,964</b>	49,438		
2004 Jun.	1,358,009	63.3	240,842	77	408,438	132,026	781,383	36.4	442,162	53,879	46,766	<b>3,003,025</b>	42,799		
Dec.	1,629,345	70.4	209,174	87	265,068	141,065	615,394	26.6	478,192	45,516	49,788	<b>3,274,692</b>	77,781		
2005 Jun.	1,801,161	70.0	173,788	77	415,016	140,453	729,334	28.3	563,552	42,386	61,809	<b>3,624,387</b>	58,252		
2004 Jun.	1,358,009	63.3	240,842	77	408,438	132,026	781,383	36.4	442,162	53,879	46,766	<b>3,003,025</b>	42,799		
Jul.	1,347,155	62.8	231,724	77	416,569	132,451	780,821	36.4	435,584	55,117	46,872	<b>3,007,447</b>	57,681		
Aug.	1,364,921	63.4	229,397	77	416,204	130,831	776,509	36.0	448,439	55,053	47,483	<b>3,060,995</b>	61,340		
Sep.	1,416,076	65.3	220,651	77	360,186	129,667	710,581	32.8	464,341	54,481	48,889	<b>3,082,415</b>	78,000		
Oct.	1,473,485	68.0	219,794	77	326,265	129,481	675,617	31.2	468,851	52,556	48,844	<b>3,108,136</b>	48,998		
Nov.	1,515,732	69.3	216,858	77	298,324	129,109	644,368	29.4	462,511	50,258	49,486	<b>3,123,430</b>	55,005		
Dec.	1,629,345	70.4	209,174	87	265,068	141,065	615,394	26.6	478,192	45,516	49,788	<b>3,274,692</b>	77,781		
2005 Jan.	1,637,579	72.5	200,657	89	265,726	136,047	602,519	26.7	465,549	46,062	48,085	<b>3,211,274</b>	58,879		
Feb.	1,657,057	71.6	195,327	77	303,359	148,233	646,996	28.0	483,836	46,094	54,032	<b>3,300,570</b>	56,168		
Mar.	1,711,045	71.9	187,977	77	328,800	141,375	658,229	27.7	499,086	43,987	58,909	<b>3,384,283</b>	51,059		
Apr.	1,720,973	71.7	186,139	77	352,206	132,568	670,990	28.0	526,240	38,300	59,904	<b>3,422,581</b>	50,632		
May	1,752,249	72.0	182,111	77	346,973	129,041	658,202	27.1	536,372	39,805	60,403	<b>3,454,606</b>	56,632		
Jun.	1,801,161	70.0	173,788	77	415,016	140,453	729,334	28.3	563,552	42,386	61,809	<b>3,624,387</b>	58,252		

<sup>1</sup> Formate revised from July, 2005

Source: Finance Department SBP

## 2.8 Scheduled Bank's Consolidated Position

Based on weekly position Liabilities & Assets (All Banks)

(Million Rupees)

Financial Position	2006						
	Apr.	May	Jun.	Jul.	Aug.	Sep.	Oct.
<b>ASSETS</b>							
Cash & Balances With Treasury Banks	249,124	249,157	273,896	301,398	293,350	319,300	327,245
Balances With Other Banks	121,371	110,300	120,345	108,572	105,201	105,505	120,810
Lending To Financial Institutions	157,205	175,661	226,451	184,544	226,567	206,513	171,627
Investments - Net	827,850	821,399	794,584	830,799	799,285	790,057	790,558
Advances – Net of Provision	1,956,194	1,993,920	2,005,658	2,055,633	2,064,312	2,104,943	2,125,282
Gross Advances	2,077,076	2,115,049	2,127,388	2,177,898	2,189,368	2,231,665	2,252,749
Less: Provision for Non- Performing Advances	120,882	121,129	121,730	122,265	125,057	126,723	127,467
Operating Fixed Assets	70,150	71,577	72,659	74,790	76,995	79,358	80,796
Deferred Tax Assets	6,718	6,943	6,760	7,104	7,175	7,003	6,998
Other Assets	174,368	171,251	172,644	162,982	161,763	186,123	170,138
<b>TOTAL ASSETS</b>	<b>3,562,978</b>	<b>3,600,208</b>	<b>3,672,997</b>	<b>3,725,821</b>	<b>3,734,647</b>	<b>3,798,801</b>	<b>3,793,455</b>
<b>LIABILITIES</b>							
Bills Payable	49,947	47,636	47,282	48,688	47,676	60,122	60,559
Borrowings	334,651	346,751	361,080	359,426	369,875	385,035	363,350
Deposits and Other Accounts	2,695,939	2,733,969	2,786,731	2,813,325	2,806,645	2,816,450	2,823,123
Sub-ordinated Loans	21,722	21,721	21,721	21,720	23,374	23,612	23,911
Liabilities Against Assets Subject to Finance Lease	592	591	740	734	720	675	672
Other Liabilities	137,009	129,047	133,514	131,994	134,948	150,167	146,623
Deferred Tax Liabilities	8,948	8,996	8,554	11,357	11,316	10,947	10,386
<b>TOTAL LIABILITIES</b>	<b>3,248,809</b>	<b>3,288,712</b>	<b>3,359,621</b>	<b>3,387,244</b>	<b>3,394,554</b>	<b>3,447,007</b>	<b>3,428,624</b>
<b>NET ASSETS</b>	<b>314,170</b>	<b>311,496</b>	<b>313,376</b>	<b>338,577</b>	<b>340,092</b>	<b>351,794</b>	<b>364,831</b>
<b>REPRESENTED BY:</b>							
Paid up Capital / Head Office Capital Account	116,609	119,500	119,860	122,786	125,837	127,076	126,704
Reserves	92,135	90,580	89,780	90,740	91,569	93,324	105,351
Unappropriated / Unremitted Profit	28,059	27,547	33,428	48,719	48,007	54,546	54,284
Surplus/ (Deficit) On Revaluation Of Assets	77,367	73,869	70,308	76,332	74,680	76,849	78,491
<b>TOTAL</b>	<b>314,170</b>	<b>311,496</b>	<b>313,376</b>	<b>338,577</b>	<b>340,092</b>	<b>351,794</b>	<b>364,831</b>

Format of weekly statement of position has been redesigned from the month of July 05.

## 2.8 Scheduled Bank's Consolidated Position

Based on weekly position Liabilities & Assets (All Banks)

(Million Rupees)

Financial Position	2006		2007			
	Nov.	Dec.	Jan.	Feb.	Mar.	Apr.
<b>ASSETS</b>						
Cash & Balances With Treasury Banks	325,032	332,452	319,628	321,821	322,678	320,915
Balances With Other Banks	107,717	140,575	142,802	156,924	175,772	167,425
Lending To Financial Institutions	187,034	192,343	182,186	205,285	192,127	199,604
Investments - Net	824,966	775,546	794,483	872,426	929,454	1,022,787
Advances – Net of Provision	2,168,507	2,281,866	2,243,207	2,228,153	2,251,930	2,253,633
Gross Advances	2,297,416	2,409,478	2,371,734	2,358,720	2,385,242	2,387,597
Less: Provision for Non-Performing Advances	128,909	127,611	128,527	130,567	133,313	133,964
Operating Fixed Assets	83,268	107,745	109,639	112,704	120,447	122,336
Deferred Tax Assets	7,234	7,988	8,002	7,633	7,866	7,984
Other Assets	185,865	217,731	202,912	202,424	220,770	202,416
<b>TOTAL ASSETS</b>	<b>3,889,624</b>	<b>4,056,246</b>	<b>4,002,859</b>	<b>4,107,369</b>	<b>4,221,045</b>	<b>4,297,101</b>
<b>LIABILITIES</b>						
Bills Payable	56,524	55,177	58,521	50,364	52,516	53,570
Borrowings	395,124	420,080	382,635	425,687	393,968	426,994
Deposits and Other Accounts	2,891,250	2,999,895	2,975,457	3,034,321	3,151,944	3,177,075
Sub-ordinated Loans	24,411	26,967	26,967	26,264	27,764	27,744
Liabilities Against Assets Subject to Finance Lease	645	898	929	944	901	893
Other Liabilities	148,631	150,308	147,312	146,880	154,554	154,097
Deferred Tax Liabilities	7,844	7,357	6,422	6,585	8,860	8,766
<b>TOTAL LIABILITIES</b>	<b>3,524,428</b>	<b>3,660,683</b>	<b>3,598,242</b>	<b>3,691,046</b>	<b>3,790,508</b>	<b>3,849,139</b>
<b>NET ASSETS</b>	<b>365,196</b>	<b>395,563</b>	<b>404,617</b>	<b>416,323</b>	<b>430,537</b>	<b>447,963</b>
<b>REPRESENTED BY:</b>						
Paid up Capital / Head Office Capital Account	128,019	165,477	165,894	168,895	180,299	186,320
Reserves	104,812	102,928	116,388	117,200	125,493	124,501
Unappropriated / Unremitted Profit	63,296	63,520	56,383	62,676	57,160	63,858
Surplus/ (Deficit) On Revaluation Of Assets	69,068	63,638	65,952	67,553	67,585	73,283
<b>TOTAL</b>	<b>365,196</b>	<b>395,563</b>	<b>404,617</b>	<b>416,323</b>	<b>430,537</b>	<b>447,963</b>

Source: Finance Department SBP

## 2.9 Scheduled Banks' Liquidity Position All Banks<sup>1</sup>

(Million Rupees)

Last Saturday		LIQUID LIABILITIES IN PAKISTAN			LIQUID ASSETS MAINTAINED IN PAKISTAN					
		Demand Liabilities	Time Liabilities	Total	Cash in Pakistan	Balance With SBP	Balance With Agents of SBP	Gold	Unencumbered Approved Securities <sup>2</sup>	
2002	Jun.	649,931	793,887	1,443,818	29,329	76,799	10,314	0	394,457	
	Dec.	713,429	839,446	1,552,875	28,433	91,914	4,257	0	539,459	
2003	Jun.	810,812	889,173	1,699,985	30,926	155,472	5,987	0	574,986	
	Dec.	917,242	906,630	1,823,872	33,682	122,610	3,661	0	532,752	
2004	Jun.	958,869	965,782	1,924,652	33,908	162,595	4,689	0	484,641	
	Dec.	1,062,884	995,135	2,058,019	39,440	126,506	4,186	0	408,263	
2005	Jun.	1,131,465	1,138,439	2,269,904	42,461	120,668	5,621	0	529,035	
	Dec.	1,289,884	1,244,768	2,534,652	50,145	146,530	15,173	0	515,681	
2006	Jun.	1,281,332	1,421,594	2,702,926	55,454	159,210	7,529	0	567,416	
	Dec.	2,314,909	693,303	3,008,212	61,755	215,476	16,473	0	567,984	
2006	Mar.	1,248,036	1,403,501	2,651,537	49,892	149,909	6,266	0	546,580	
	Apr.	1,246,268	1,371,950	2,618,218	52,766	137,954	7,202	0	564,293	
	May	1,265,987	1,384,203	2,650,190	53,751	137,757	7,018	0	570,108	
	Jun.	1,281,332	1,421,594	2,702,926	55,454	159,210	7,529	0	567,416	
	Jul.	2,223,752	553,825	2,777,577	53,849	185,737	6,623	0	567,119	
	Aug.	2,178,939	589,245	2,768,184	55,618	176,140	6,594	0	577,403	
	Sep.	2,169,117	600,658	2,769,775	58,745	194,781	9,954	0	543,919	
	Oct.	2,174,693	632,476	2,807,169	65,615	198,410	8,313	0	547,101	
	Nov.	2,211,847	653,169	2,865,016	57,561	208,877	6,890	0	584,116	
	Dec.	2,314,909	693,303	3,008,212	61,755	215,476	16,473	0	567,984	
	2007	Jan.	2,251,623	673,981	2,925,604	63,382	213,976	7,185	0	592,314
		Feb.	2,298,127	681,241	2,979,368	63,823	216,592	6,753	0	646,757
Mar.		2,601,704	528,142	3,129,846	63,405	213,311	9,183	0	716,324	

## 2.9 Scheduled Banks' Liquidity Position All Banks<sup>1</sup>

(Million Rupees)

Last Saturday	LIQUID ASSETS MAINTAINED IN PAKISTAN					Total	Minimum of Assets required to be held under Section 29 of the Banking Companies Ordinance	Excess of Assets being held over the minimum required under Section 29 of the Banking Companies Ordinance
	Foreign Banks Deposits with SBP under section 13(3) of the Banking Companies Ordinance							
	Cash	Unencumbered Approved Securities <sup>2</sup>	Foreign Currency	Share Capital M F B				
2002 Jun.	60	827	21,046	1,705	534,537	288,764	245,773	
Dec.	60	828	19,976	1,705	686,632	310,575	376,057	
2003 Jun.	60	936	19,828	1,705	789,900	339,997	449,903	
Dec.	560	327	18,799	1,705	714,096	364,774	349,322	
2004 Jun.	190	3,601	10,341	1,705	701,670	382,784	318,886	
Dec.	60	129	14,280	1,705	594,569	408,376	186,193	
2005 Jun.	60	4,239	15,919	1,675	719,678	450,694	268,984	
Dec.	156	4,020	17,660	1,705	751,070	503,471	247,599	
2006 Jun.	156	4,014	19,172	1,705	814,656	537,716	276,940	
Dec.	156	3,981	13,524	1,685	881,034	719,116	161,918	
2006 Mar	156	4,028	18,624	1,705	777,160	527,520	249,640	
Apr.	156	4,025	18,624	1,705	786,725	520,874	265,851	
May	156	4,012	19,172	1,705	793,679	527,180	266,499	
Jun.	156	4,014	19,172	1,705	814,656	537,716	276,940	
Jul.	156	4,022	19,327	1,705	838,538	668,025	170,513	
Aug.	156	3,985	19,327	1,705	840,928	664,207	176,721	
Sep.	156	4,003	19,327	1,705	832,590	663,920	168,670	
Oct.	156	4,004	19,327	1,705	844,631	671,851	172,780	
Nov.	156	3,984	14,050	1,705	877,339	685,097	192,242	
Dec.	156	3,981	13,524	1,685	881,034	719,116	161,918	
2007 Jan.	156	0	13,941	1,655	892,609	699,192	193,417	
Feb.	156	0	13,941	1,655	949,677	712,094	237,583	
Mar	156	0	13,941	1,655	1,017,975	755,439	262,536	

1 Excluding Indian Banks

Source: Finance Department SBP

2 Valued at a price not exceeding current market price

Note : Figures of Demand and Time Liabilities of Scheduled Banks shown in this table may not tally with the corresponding provisional figures appearing in the table 2.7 on page 26 & 27.

MFB : Macro Finance Bank ( Khushali Bank )

## 2.10 NBFCs Consolidated Financial Position

(Million Rupees)

Assets/ Liabilities	Jun 06			Sep 06 <sup>P</sup>		
	DFIs	NBFCs	Total	DFIs	NBFCs	Total
<b>1. Currency and Deposits</b>	<b>10,558</b>	<b>28,312</b>	<b>38,870</b>	<b>10,042</b>	<b>27,759</b>	<b>37,801</b>
a. Currency	39	944	983	51	372	423
b. Transferable Deposits	-	18,646	18,646	-	17,932	17,932
c. Restricted Deposits	-	476	476	-	573	573
d. Other Deposits	10,519	8,246	18,765	9,991	8,882	18,873
<b>2. Investment in securities other than shares</b>	<b>17,527</b>	<b>17,485</b>	<b>35,012</b>	<b>18,395</b>	<b>16,874</b>	<b>35,269</b>
a. Short-term	4,403	4,611	9,014	4,843	4,521	9,364
b. Long-term	13,124	12,874	25,998	13,552	12,353	25,905
<b>3. Loans extended (Advances)</b>	<b>46,462</b>	<b>125,647</b>	<b>172,109</b>	<b>46,478</b>	<b>120,294</b>	<b>166,772</b>
a. Short-term	50	26,607	26,657	-	24,165	24,165
b. Long-term	46,412	99,040	145,452	46,478	96,129	142,607
<b>4. Investment in shares</b>	<b>24,492</b>	<b>152,031</b>	<b>176,523</b>	<b>23,581</b>	<b>153,100</b>	<b>176,681</b>
a. Quoted	24,492	150,320	174,812	23,581	151,345	174,926
b. Non quoted	-	1,711	1,711	-	1,755	1,755
<b>5. Insurance Technical Reserve</b>	-	-	-	-	-	-
a. Life	-	-	-	-	-	-
b. Non-life	-	-	-	-	-	-
<b>6. Financial Derivatives</b>	-	<b>809</b>	<b>809</b>	-	<b>916</b>	<b>916</b>
<b>7. Other accounts receivable</b>	<b>8,845</b>	<b>18,528</b>	<b>27,373</b>	<b>9,373</b>	<b>20,508</b>	<b>29,881</b>
<b>8. Non-financial assets</b>	-	<b>8,685</b>	<b>8,685</b>	-	<b>8,837</b>	<b>8,837</b>
a. Produced assets	-	5,720	5,720	-	5,125	5,125
i. Fixed assets	-	5,251	5,251	-	4,151	4,151
ii. Inventories	-	222	222	-	130	130
iii. Valuables	-	-	-	-	0	0
iv. Other produced assets	-	247	247	-	844	844
b. Non-produced assets	-	2,965	2,965	-	3,712	3,712
i. Land	-	2,123	2,123	-	2,606	2,606
ii. Other-non-produced assets	-	842	842	-	1,106	1,106
<b>Total Assets/ Liabilities</b>	<b>107,884</b>	<b>351,497</b>	<b>459,381</b>	<b>107,868</b>	<b>348,286</b>	<b>456,154</b>
<b>1. Deposits</b>	<b>28,985</b>	<b>37,258</b>	<b>66,243</b>	<b>24,998</b>	<b>36,102</b>	<b>61,100</b>
a. Restricted deposits	-	10,219	10,219	-	9,707	9,707
b. Other deposits	28,985	27,039	56,024	24,998	26,395	51,393
<b>2. Securities other than shares (bonds/debentures etc)</b>	-	<b>7,456</b>	<b>7,456</b>	-	<b>8,781</b>	<b>8,781</b>
a. Short-term	-	2,659	2,659	-	1,913	1,913
b. long-term	-	4,797	4,797	-	6,868	6,868
<b>3. Loans (Borrowings)</b>	<b>37,079</b>	<b>72,435</b>	<b>109,514</b>	<b>39,210</b>	<b>67,059</b>	<b>106,269</b>
a. Short-term	2,600	25,871	28,471	3,965	25,546	29,511
b. Long-term	34,479	46,564	81,043	35,245	41,513	76,758
<b>4. Financial Derivatives</b>	-	<b>805</b>	<b>805</b>	-	<b>493</b>	<b>493</b>
<b>5. Other accounts payable</b>	<b>6,488</b>	<b>33,389</b>	<b>39,877</b>	<b>3,608</b>	<b>35,749</b>	<b>39,357</b>
<b>6. Shares and other equity</b>	<b>35,332</b>	<b>200,153</b>	<b>235,485</b>	<b>40,053</b>	<b>200,102</b>	<b>240,155</b>
a. Quoted	16,387	84,704	101,091	17,137	100,324	117,461
b. Non quoted	-	21,137	21,137	-	20,630	20,630
c. Retained earnings	-	53,033	53,033	-	55,489	55,489
d. Current year result	1,937	19,137	21,074	3,500	2,776	6,276
e. General and special reserves	17,008	20,096	37,104	19,417	18,704	38,121
f. Valuation adjustments	-	2,046	2,046	-	2,179	2,179

## 2.10 NBFCs Consolidated Financial Position

(Million Rupees)

Assets/ Liabilities	Dec 06 <sup>P</sup>			Mar.07 <sup>P</sup>		
	DFIs	NBFCs	Total	DFIs	NBFCs	Total
<b>1. Currency and Deposits</b>	<b>17,342</b>	<b>31,730</b>	<b>49,072</b>	<b>17,299</b>	<b>47,972</b>	<b>65,271</b>
a. Currency	122	521	643	51	260	311
b. Transferable Deposits	0	20,671	20,671	0	35,775	35,775
c. Restricted Deposits	0	1,334	1,334	0	2,074	2,074
d. Other Deposits	17,220	9,204	26,424	17,248	9,863	27,111
<b>2. Investment in securities other than shares</b>	<b>16,302</b>	<b>15,504</b>	<b>31,806</b>	<b>18,656</b>	<b>18,775</b>	<b>37,431</b>
a. Short-term	3,319	3,669	6,988	5,272	3,272	8,544
b. Long-term	12,983	11,835	24,818	13,384	15,503	28,887
<b>3. Loans extended (Advances)</b>	<b>55,550</b>	<b>108,677</b>	<b>164,227</b>	<b>49,950</b>	<b>118,010</b>	<b>167,960</b>
a. Short-term	0	26,335	26,335	0	31,805	31,805
b. Long-term	55,550	82,342	137,892	49,950	86,205	136,155
<b>4. Investment in shares</b>	<b>23,511</b>	<b>133,461</b>	<b>156,972</b>	<b>24,218</b>	<b>142,907</b>	<b>167,125</b>
a. Quoted	23,511	131,631	155,142	24,218	140,557	164,775
b. Non quoted	0	1,830	1,830	0	2,350	2,350
<b>5. Insurance Technical Reserve</b>	<b>0</b>	<b>2</b>	<b>2</b>	<b>0</b>	<b>0</b>	<b>0</b>
a. Life	0	1	1	0	0	0
b. Non-life	0	1	1	0	0	0
<b>6. Financial Derivatives</b>	<b>0</b>	<b>1,215</b>	<b>1,215</b>	<b>0</b>	<b>1,919</b>	<b>1,919</b>
<b>7. Other accounts receivable</b>	<b>8,444</b>	<b>18,269</b>	<b>26,713</b>	<b>7,931</b>	<b>21,999</b>	<b>29,930</b>
<b>8. Non-financial assets</b>	<b>0</b>	<b>7,719</b>	<b>7,719</b>	<b>0</b>	<b>8,606</b>	<b>8,606</b>
a. Produced assets	0	5,488	5,488	0	5,502	5,502
i. Fixed assets	0	5,116	5,116	0	4,823	4,823
ii. Inventories	0	148	148	0	294	294
iii. Valuables	0	0	0	0	0	0
iv. Other produced assets	0	224	224	0	385	385
b. Non-produced assets	0	2,230	2,230	0	3,104	3,104
i. Land	0	1,471	1,471	0	1,478	1,478
ii. Other-non-produced assets	0	759	759	0	1,626	1,626
<b>Total Assets/ Liabilities</b>	<b>121,148</b>	<b>316,578</b>	<b>437,726</b>	<b>118,054</b>	<b>360,188</b>	<b>478,242</b>
<b>1. Deposits</b>	<b>25,830</b>	<b>25,744</b>	<b>51,574</b>	<b>26,134</b>	<b>25,822</b>	<b>51,956</b>
a. Restricted deposits	0	8,149	8,149	0	10,150	10,150
b. Other deposits	25,830	17,595	43,425	26,134	15,672	41,806
<b>2. Securities other than shares (bonds/debentures etc)</b>	<b>0</b>	<b>9,563</b>	<b>9,563</b>	<b>0</b>	<b>7,430</b>	<b>7,430</b>
b. long-term	0	2,194	2,194	0	1,947	1,947
b. long-term	0	7,369	7,369	0	5,483	5,483
<b>3. Loans (Borrowings)</b>	<b>49,911</b>	<b>60,633</b>	<b>110,544</b>	<b>49,778</b>	<b>63,134</b>	<b>112,912</b>
a. Short-term	5,050	21,156	26,206	225	22,998	23,223
b. Long-term	44,861	39,477	84,338	49,553	40,136	89,689
<b>4. Financial Derivatives</b>	<b>0</b>	<b>148</b>	<b>148</b>	<b>0</b>	<b>1,338</b>	<b>1,338</b>
<b>5. Other accounts payable</b>	<b>4,826</b>	<b>29,748</b>	<b>34,574</b>	<b>3,362</b>	<b>36,294</b>	<b>39,656</b>
<b>6. Shares and other equity</b>	<b>40,582</b>	<b>190,742</b>	<b>231,324</b>	<b>38,781</b>	<b>226,170</b>	<b>264,951</b>
a. Quoted	19,395	98,188	117,583	19,395	112,455	131,850
b. Non quoted	0	23,579	23,579	0	34,256	34,256
c. Retained earnings	0	50,807	50,807	0	54,059	54,059
d. Current year result	3,713	1,960	5,673	658	7,177	7,835
e. General and special reserves	17,474	16,940	34,414	18,728	20,525	39,253
f. Valuation adjustments	0	-732	-732	0	-2,302	-2,302

NBFCs Non Bank Financial Companies

DFIs Development Finance Institutions

## 2.11 Classification of Deposits with NBFCs

(Million Rupees)

Sector	December 06 <sup>P</sup>			March 07 <sup>P</sup>		
	Depository	Non-Depository	Total	Depository	Non-Depository	Total
<b>1 Non-financial Corporations</b>	<b>15,937</b>	<b>311</b>	<b>16,248</b>	<b>17,852</b>	<b>181</b>	<b>18,033</b>
i Public	1,488	61	1,549	1,505	0	1,505
ii Private	14,449	250	14,699	16,347	181	16,528
<b>2 Financial Corporations</b>	<b>22,860</b>	<b>15</b>	<b>22,875</b>	<b>21,657</b>	<b>10</b>	<b>21,667</b>
i Central Bank	0	0	0	0	0	0
ii Deposit money institutions	18,271	8	18,279	14,815	10	14,825
ii Other deposit accepting institutions	1,382	7	1,389	3,746	0	3,746
iv Financial intermediaries	1,549	0	1,549	1,906	0	1,906
v Financial auxiliaries	521	0	521	240	0	240
vi Insurance and pension funds	1,137	0	1,137	950	0	950
<b>3 Central Government</b>	<b>923</b>	<b>0</b>	<b>923</b>	<b>225</b>	<b>0</b>	<b>225</b>
<b>4 Provincial Governments</b>	<b>18</b>	<b>0</b>	<b>18</b>	<b>107</b>	<b>0</b>	<b>107</b>
<b>5 Local Governments</b>	<b>0</b>	<b>0</b>	<b>0</b>	<b>0</b>	<b>0</b>	<b>0</b>
<b>6 Household</b>	<b>11,203</b>	<b>7</b>	<b>11,210</b>	<b>8,385</b>	<b>4</b>	<b>8,389</b>
<b>7 Non-profit Institutions (NPIs) Serving Households</b>	<b>296</b>	<b>0</b>	<b>296</b>	<b>294</b>	<b>0</b>	<b>294</b>
<b>8 Non-residents</b>	<b>5</b>	<b>0</b>	<b>5</b>	<b>5</b>	<b>0</b>	<b>5</b>
<b>9 Foreign Currency</b>	<b>0</b>	<b>0</b>	<b>0</b>	<b>72</b>	<b>0</b>	<b>72</b>
<b>Total</b>	<b>51,242</b>	<b>333</b>	<b>51,575</b>	<b>51,761</b>	<b>195</b>	<b>51,956</b>

## 2.12 Classification of NBFC's Loans Extended(Advances)

(Million Rupees)

Sector	December 06 <sup>P</sup>			March 07 <sup>P</sup>		
	Depository	Non-Depository	Total	Depository	Non-Depository	Total
<b>1 Non-financial corporations</b>	<b>96,259</b>	<b>5,992</b>	<b>102,251</b>	<b>98,529</b>	<b>7,258</b>	<b>105,787</b>
i Public	1,748	275	2,023	1,614	0	1,614
ii Private	94,511	5,717	100,228	96,915	7,258	104,173
<b>2 Financial Corporations</b>	<b>16,489</b>	<b>11,887</b>	<b>28,376</b>	<b>10,504</b>	<b>18,260</b>	<b>28,764</b>
i Central Bank	0	0	0	0	0	0
ii Deposit money institutions	9,560	882	10,442	4,303	802	5,105
ii Other deposit accepting institutions	1,544	2,430	3,974	2,582	2,288	4,870
iv Financial intermediaries	1,156	3,147	4,303	1,119	3,288	4,407
v Financial auxiliaries	4,160	5,426	9,586	2,434	11,879	14,313
vi Insurance and pension funds	69	2	71	66	3	69
<b>3 Central Government</b>	<b>140</b>	<b>0</b>	<b>140</b>	<b>122</b>	<b>0</b>	<b>122</b>
<b>4 Provincial Governments</b>	<b>0</b>	<b>0</b>	<b>0</b>	<b>0</b>	<b>0</b>	<b>0</b>
<b>5 Local Governments</b>	<b>0</b>	<b>0</b>	<b>0</b>	<b>0</b>	<b>0</b>	<b>0</b>
<b>6 Household</b>	<b>13,158</b>	<b>12,079</b>	<b>25,237</b>	<b>13,364</b>	<b>12,040</b>	<b>25,404</b>
<b>7 Non-profit Institutions (NPIs) Serving Households</b>	<b>20</b>	<b>0</b>	<b>20</b>	<b>20</b>	<b>0</b>	<b>20</b>
<b>8 Non-Residents</b>	<b>0</b>	<b>0</b>	<b>0</b>	<b>0</b>	<b>0</b>	<b>0</b>
<b>9 Bills purchased and discounted (inland bills)</b>	<b>0</b>	<b>217</b>	<b>217</b>	<b>0</b>	<b>208</b>	<b>208</b>
<b>10 Other Advances and Financial Leases</b>	<b>2,507</b>	<b>5,479</b>	<b>7,986</b>	<b>2,541</b>	<b>5,114</b>	<b>7,655</b>
<b>Total</b>	<b>128,573</b>	<b>35,654</b>	<b>164,227</b>	<b>125,080</b>	<b>42,880</b>	<b>167,960</b>



## 2.13 Classification of NBFC's Investments in Securities and Shares

(Million Rupees)

Securities/Shares	December 06 <sup>P</sup>			March 07 <sup>P</sup>		
	Depository	Non-Depository	Total	Depository	Non-Depository	Total
<b>A. Securities</b>	<b>22,383</b>	<b>9,423</b>	<b>31,806</b>	<b>24,564</b>	<b>12,867</b>	<b>37,431</b>
<b>1 Non-financial Corporations</b>	<b>7,489</b>	<b>4,106</b>	<b>11,595</b>	<b>7,772</b>	<b>4,989</b>	<b>12,761</b>
i Public	698	1,104	1,802	649	1,056	1,705
ii Private	6,791	3,002	9,793	7,123	3,933	11,056
<b>2 Financial Corporations</b>	<b>4,327</b>	<b>2,792</b>	<b>7,119</b>	<b>4,347</b>	<b>5,253</b>	<b>9,600</b>
i Central Bank	0	0	0	0	0	0
ii Deposit money institutions	3,806	1,886	5,692	3,702	3,347	7,049
ii Other deposit accepting institutions	295	656	951	314	887	1,201
iv Financial intermediaries	216	250	466	201	1,019	1,220
v Financial auxiliaries	0	0	0	0	0	0
vi Insurance and pension funds	10	0	10	130	0	130
<b>3 Central Government</b>	<b>10,517</b>	<b>2,525</b>	<b>13,042</b>	<b>12,394</b>	<b>2,625</b>	<b>15,019</b>
<b>4 Provincial Governments</b>	<b>0</b>	<b>0</b>	<b>0</b>	<b>0</b>	<b>0</b>	<b>0</b>
<b>5 Local Governments</b>	<b>0</b>	<b>0</b>	<b>0</b>	<b>0</b>	<b>0</b>	<b>0</b>
<b>6 Household</b>	<b>0</b>	<b>0</b>	<b>0</b>	<b>0</b>	<b>0</b>	<b>0</b>
<b>7 Non-profit institutions (NPIs) Serving Households</b>	<b>0</b>	<b>0</b>	<b>0</b>	<b>0</b>	<b>0</b>	<b>0</b>
<b>8 Non-Residents</b>	<b>0</b>	<b>0</b>	<b>0</b>	<b>0</b>	<b>0</b>	<b>0</b>
<b>9 Foreign Currency</b>	<b>50</b>	<b>0</b>	<b>50</b>	<b>51</b>	<b>0</b>	<b>51</b>
<b>B. Shares</b>	<b>30,670</b>	<b>126,302</b>	<b>156,972</b>	<b>33,845</b>	<b>133,280</b>	<b>167,125</b>
<b>1 Non-financial Corporations</b>	<b>26,700</b>	<b>113,741</b>	<b>140,441</b>	<b>29,733</b>	<b>122,788</b>	<b>152,521</b>
i Public	2,968	102,255	105,223	4,110	108,532	112,642
ii Private	23,732	11,486	35,218	25,623	14,256	39,879
<b>2 Financial Corporations</b>	<b>3,018</b>	<b>12,472</b>	<b>15,490</b>	<b>3,125</b>	<b>10,292</b>	<b>13,417</b>
i Central Bank	0	0	0	0	0	0
ii Deposit money institutions	1,119	4,925	6,044	1,533	5,137	6,670
ii Other deposit accepting institutions	440	2,321	2,761	254	1,108	1,362
iv Financial intermediaries	1,197	3,396	4,593	1,186	2,903	4,089
v Financial auxiliaries	118	30	148	18	28	46
vi Insurance and pension funds	144	1,800	1,944	134	1,116	1,250
<b>3 Central Government</b>	<b>0</b>	<b>0</b>	<b>0</b>	<b>0</b>	<b>0</b>	<b>0</b>
<b>4 Provincial Governments</b>	<b>0</b>	<b>0</b>	<b>0</b>	<b>0</b>	<b>0</b>	<b>0</b>
<b>5 Local Governments</b>	<b>0</b>	<b>0</b>	<b>0</b>	<b>0</b>	<b>0</b>	<b>0</b>
<b>6 Household</b>	<b>0</b>	<b>0</b>	<b>0</b>	<b>0</b>	<b>0</b>	<b>0</b>
<b>7 Non-profit institutions (NPIs) Serving Households</b>	<b>0</b>	<b>0</b>	<b>0</b>	<b>0</b>	<b>0</b>	<b>0</b>
<b>8 Non-residents</b>	<b>952</b>	<b>89</b>	<b>1,041</b>	<b>987</b>	<b>200</b>	<b>1,187</b>
<b>Total (A+B)</b>	<b>53,053</b>	<b>135,725</b>	<b>188,778</b>	<b>58,409</b>	<b>146,147</b>	<b>204,556</b>

## 2.14 Currency in Circulation

( Million Rupees )

END OF PERIOD	Subsidiary	One	Five Rupee	Total	Held by	Held by	Currency	Currency	
		Rupee			Banking	Issue	In tills of	In	
		Coins			Department	Department	Scheduled	Circulation	
Coins	of SBP	of SBP	Banks	(4-5-6-7)					
1	2	3	4	5	6	7	8		
2002	Jun.	665	3,055	458,375	<b>462,095</b>	127	1,738	26,414	<b>433,816</b>
	Dec.	665	3,423	511,287	<b>515,375</b>	169	1,951	25,510	<b>487,746</b>
2003	Jun.	662	4,004	522,891	<b>527,558</b>	214	2,351	30,415	<b>494,577</b>
	Dec.	662	4,405	595,285	<b>600,352</b>	126	2,435	30,273	<b>567,517</b>
2004	Jun.	664	4,941	611,904	<b>617,508</b>	161	2,799	36,432	<b>578,116</b>
	Dec.	667	5,574	691,072	<b>697,313</b>	126	3,068	38,836	<b>655,283</b>
2005	Jun.	667	6,093	705,720	<b>712,480</b>	146	2,961	43,472	<b>665,901</b>
	Dec.	667	6,618	769,617	<b>776,902</b>	157	2,470	42,527	<b>731,749</b>
2006	Jun.	667	6,931	784,236	<b>791,834</b>	139	2,865	48,439	<b>740,390</b>
	Dec.	667	6,933	917,809	<b>925,408</b>	141	2,640	48,367	<b>874,260</b>
2006	Apr.	667	6,965	783,483	<b>791,115</b>	173	2,652	42,092	<b>746,197</b>
	May	667	6,923	794,210	<b>801,800</b>	131	2,637	42,842	<b>756,191</b>
	Jun.	667	6,931	784,236	<b>791,834</b>	139	2,865	48,439	<b>740,390</b>
	Jul.	667	6,925	785,680	<b>793,272</b>	133	2,803	43,195	<b>747,140</b>
	Aug.	667	6,920	784,281	<b>791,867</b>	128	2,799	43,676	<b>745,265</b>
	Sep.	667	7,015	812,448	<b>820,130</b>	223	2,761	47,028	<b>770,117</b>
	Oct.	667	6,963	880,553	<b>888,182</b>	171	2,714	56,544	<b>828,753</b>
	Nov.	667	6,922	856,833	<b>864,422</b>	130	2,653	45,788	<b>815,851</b>
	Dec.	667	6,933	917,809	<b>925,408</b>	141	2,640	48,367	<b>874,260</b>
	2007	Jan.	667	6,949	880,469	<b>888,084</b>	157	2,616	47,973
Feb.		667	7,366	879,550	<b>887,583</b>	205	2,946	47,276	<b>837,156</b>
Mar.		667	7,359	879,275	<b>887,301</b>	198	2,963	49,615	<b>834,524</b>
Apr.		667	7,342	882,947	<b>890,957</b>	199	2,937	48,218	<b>839,602</b>

Note The quarter end data relate to last working day whereas monthly data are of last Saturday of the month . Source: Monetary. Policy Department SBP

Totals may not tally due to separate rounding off.