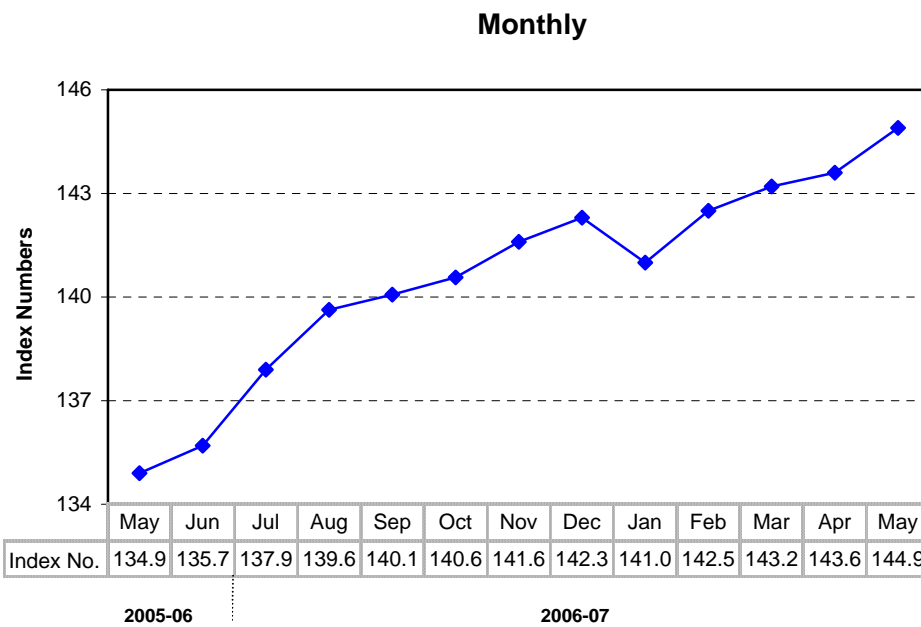
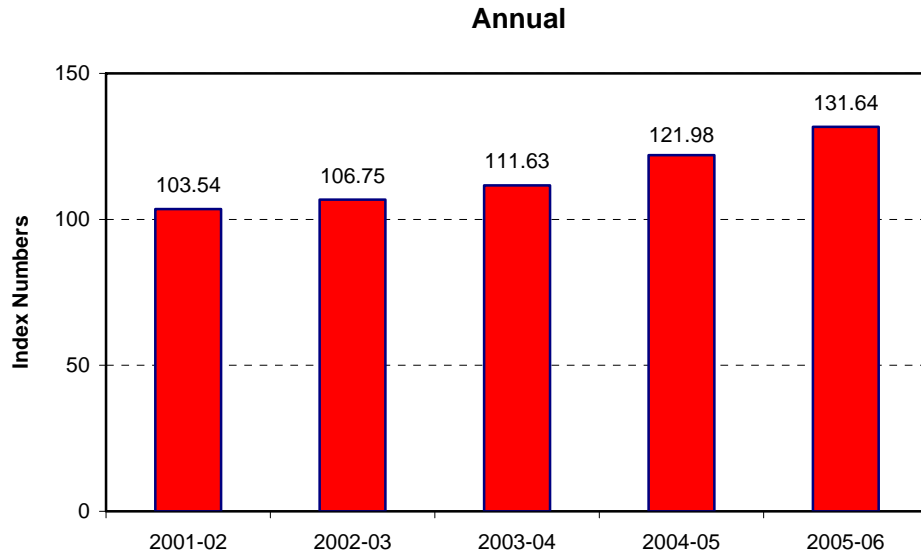


## 8.1 Combined Consumer Price Index Numbers by Commodity Groups - All Urban (2000-01=100)

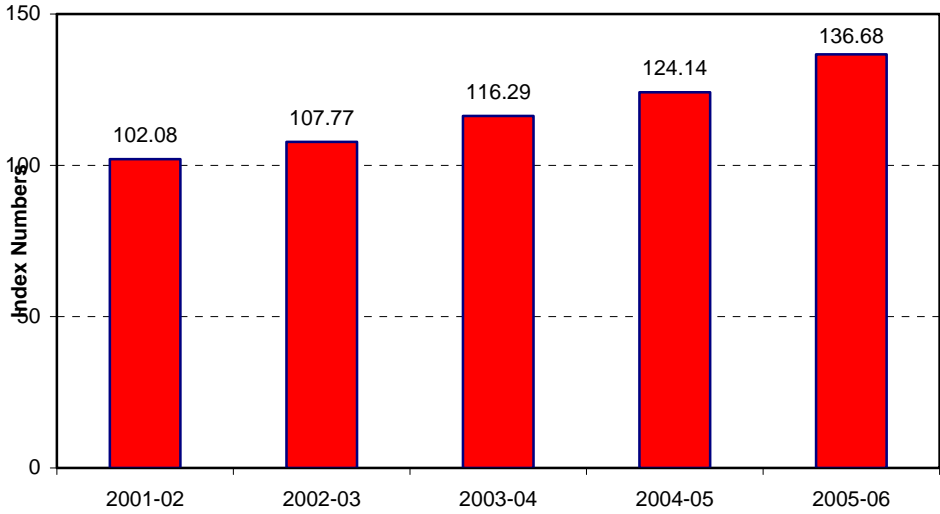
Year / Month	General	Food	Apparel	House	Fuel	Household	Transpor-	Recreation	Education	Cleaning	Medicare
		Beverages and Tobacco	Textile and Footwear		and Lighting	Furniture and Equipment	tation and Communi- cation	Entertain- ment & Education		Laundry and Personal Appearance	
2001-02	<b>103.54</b>	102.50	103.23	102.80	109.47	103.93	105.96	106.30	104.97	102.50	102.37
2002-03	<b>106.75</b>	105.40	106.78	103.54	117.81	106.90	111.60	107.21	109.92	107.37	105.59
2003-04	<b>111.63</b>	111.74	109.69	102.20	121.30	110.68	115.43	106.08	114.19	111.29	106.99
2004-05	<b>121.98</b>	125.69	112.98	120.42	125.77	117.34	125.11	105.93	117.55	115.90	107.94
2005-06	<b>131.64</b>	134.39	117.58	132.36	137.09	123.41	145.90	105.65	125.03	119.49	110.66
2006											
May	<b>134.94</b>	137.25	119.53	135.91	142.90	126.52	150.09	105.71	128.83	122.70	112.48
Jun.	<b>135.73</b>	138.87	119.92	136.62	142.41	127.37	150.19	105.74	128.85	121.67	113.04
Jul.	<b>137.91</b>	142.51	120.16	137.36	147.39	128.11	150.87	105.80	129.69	122.52	113.37
Aug.	<b>139.63</b>	145.70	120.44	138.12	148.50	128.58	151.08	105.82	130.14	122.84	117.75
Sep.	<b>140.07</b>	145.90	120.55	138.90	148.74	129.41	151.38	105.84	131.84	122.77	120.17
Oct.	<b>140.57</b>	146.67	121.02	139.53	148.12	129.86	151.44	105.86	133.20	122.56	120.26
Nov.	<b>141.59</b>	148.69	121.32	140.14	147.26	130.59	151.60	105.87	133.47	123.54	120.26
Dec.	<b>142.26</b>	149.59	121.99	140.67	148.21	131.00	151.72	105.85	133.53	124.29	120.92
2007											
Jan.	<b>141.01</b>	146.27	122.46	141.24	149.05	132.31	148.63	105.79	133.70	124.75	121.54
Feb.	<b>142.47</b>	148.35	125.09	142.10	151.13	132.97	148.74	105.56	134.97	123.19	121.72
Mar.	<b>143.17</b>	149.67	127.10	142.89	151.34	133.62	145.45	105.52	135.15	125.66	123.39
Apr.	<b>143.62</b>	150.10	127.72	143.50	151.33	134.12	145.52	105.50	136.46	126.23	123.39
May	<b>144.94</b>	152.77	127.95	144.28	151.05	134.33	145.53	105.81	136.62	129.79	124.00

Source : Federal Bureau of Statistics

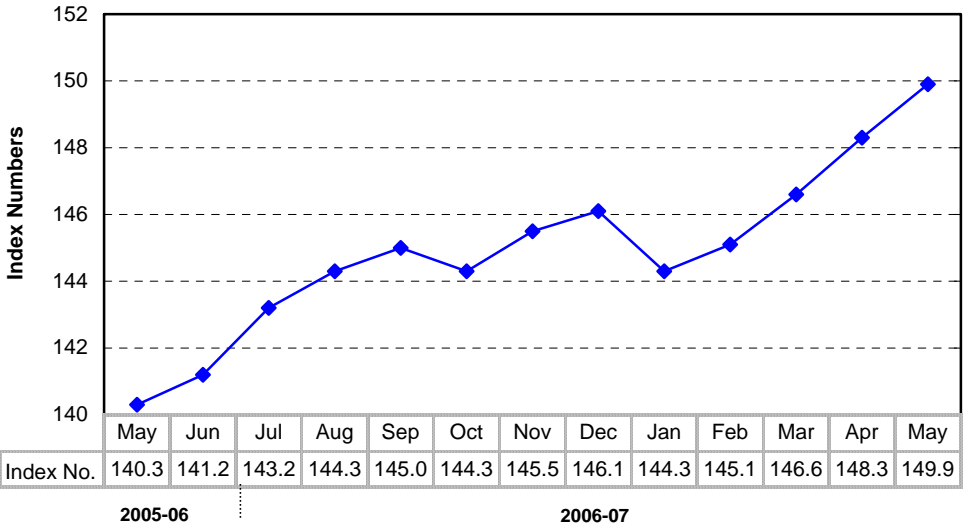
## Index Numbers of Consumer Prices (2000 - 01=100)



**Annual**



**Monthly**



## 8.2 Index Numbers of Wholesale Prices by Commodity Groups (2000-01=100 )

Year/ Month	General	Food	Raw Materials	Fuel,Lighting and Lubricants	Manufactures	Building Materials
2001-02	<b>102.08</b>	102.05	100.95	103.08	101.91	101.18
2002-03	<b>107.77</b>	105.62	115.51	115.95	103.67	102.90
2003-04	<b>116.29</b>	112.99	135.12	116.23	111.83	126.46
2004-05	<b>124.14</b>	125.03	110.44	138.01	113.05	143.79
2005-06	<b>136.68</b>	133.78	121.93	174.57	116.35	144.18
2006						
May	<b>140.32</b>	136.83	124.51	182.31	118.30	147.50
Jun.	<b>141.21</b>	137.79	128.98	182.31	118.89	146.89
Jul.	<b>143.22</b>	139.90	132.20	185.41	119.64	148.50
Aug.	<b>144.33</b>	142.43	132.15	185.82	119.81	147.99
Sep.	<b>144.97</b>	143.16	136.50	185.54	119.90	147.04
Oct.	<b>144.26</b>	143.41	128.25	185.88	119.03	147.19
Nov.	<b>145.54</b>	145.02	135.10	186.12	118.76	148.78
Dec.	<b>146.08</b>	145.31	140.15	186.09	118.76	149.28
2007						
Jan.	<b>144.31</b>	144.40	141.75	177.91	118.96	149.91
Feb.	<b>145.07</b>	145.76	142.40	176.60	119.05	157.13
Mar.	<b>146.55</b>	146.79	142.96	180.02	120.49	156.57
Apr.	<b>148.25</b>	147.77	144.83	184.93	121.14	157.01
May	<b>149.87</b>	150.86	145.86	185.87	121.39	156.74

Source : Federal Bureau of Statistics

### 8.3 Combined Sensitive Price Indicator (SPI) by Income Groups (2000-01 =100)

Year/ Month	INCOME GROUP				Combined	
	Group-I	Group-II	Group-III	Group-IV		
	Up to Rs.3000	Rs.3001 to Rs.5000	Rs.5001 to Rs.12000	Above Rs.12000		
2001-02	103.36	103.74	103.60	104.06	<b>103.60</b>	
2002-03	107.06	107.77	107.66	108.49	<b>107.53</b>	
2003-04	114.38	114.88	114.32	114.58	<b>113.93</b>	
2004-05	127.59	127.50	127.01	127.35	<b>126.52</b>	
2005-06	136.56	136.15	135.99	139.80	<b>136.43</b>	
2006	Jan.	135.51	135.35	135.41	139.87	<b>135.82</b>
	Feb.	137.49	137.10	136.79	140.61	<b>136.71</b>
	Mar.	138.65	138.07	137.59	141.11	<b>137.54</b>
	Apr.	140.50	139.72	139.19	142.54	<b>139.21</b>
	May	141.42	140.44	139.92	143.76	<b>140.06</b>
	Jun.	142.76	141.98	141.91	146.18	<b>142.25</b>
	Jul.	144.70	144.24	144.52	148.85	<b>144.62</b>
	Aug.	147.85	147.34	147.55	151.34	<b>147.28</b>
	Sep.	148.46	147.68	147.65	151.19	<b>147.23</b>
	Oct.	149.29	148.41	148.31	151.71	<b>147.90</b>
	Nov.	152.79	151.68	151.11	153.41	<b>150.42</b>
	Dec.	153.95	152.87	152.25	154.27	<b>151.45</b>
2007	Jan.	151.92	150.65	149.91	151.79	<b>149.78</b>

Note: SPI figures revised as it is computed on 53 items instead of 51 items.

Source : Federal Bureau of Statistics

## 8.4 Bullion Prices

(Rupees per 10 grams)

Year / Month	GOLD TEZABI		SILVER TEZABI			
	Karachi	Lahore	Karachi	Lahore		
2001-02	5,865	5,893	93	94		
2002-03	6,378	6,398	90	94		
2003-04	7,328	7,337	92	111		
2004-05	8,216	8,238	118	138		
2005-06	10,317	10,307	180	176		
2006	May	13,210	13,255	241	256	
	Jun.	11,767	11,830	199	200	
	Jul.	12,614	12,681	208	215	
	Aug.	12,517	12,374	208	213	
	Sep.	11,879	11,836	196	203	
	Oct.	11,700	11,753	204	208	
	Nov.	12,448	12,446	222	229	
	Dec.	12,516	12,540	237	238	
	2007	Jan.	12,443	12,458	238	239
		Feb.	12,972	12,970	242	243
		Mar.	12,956	12,945	241	243
		Apr.	13,253	13,254	246	248
May		13,136	13,124	245	245	

Figures are monthly / yearly averages

Source: Daily Business Recorder