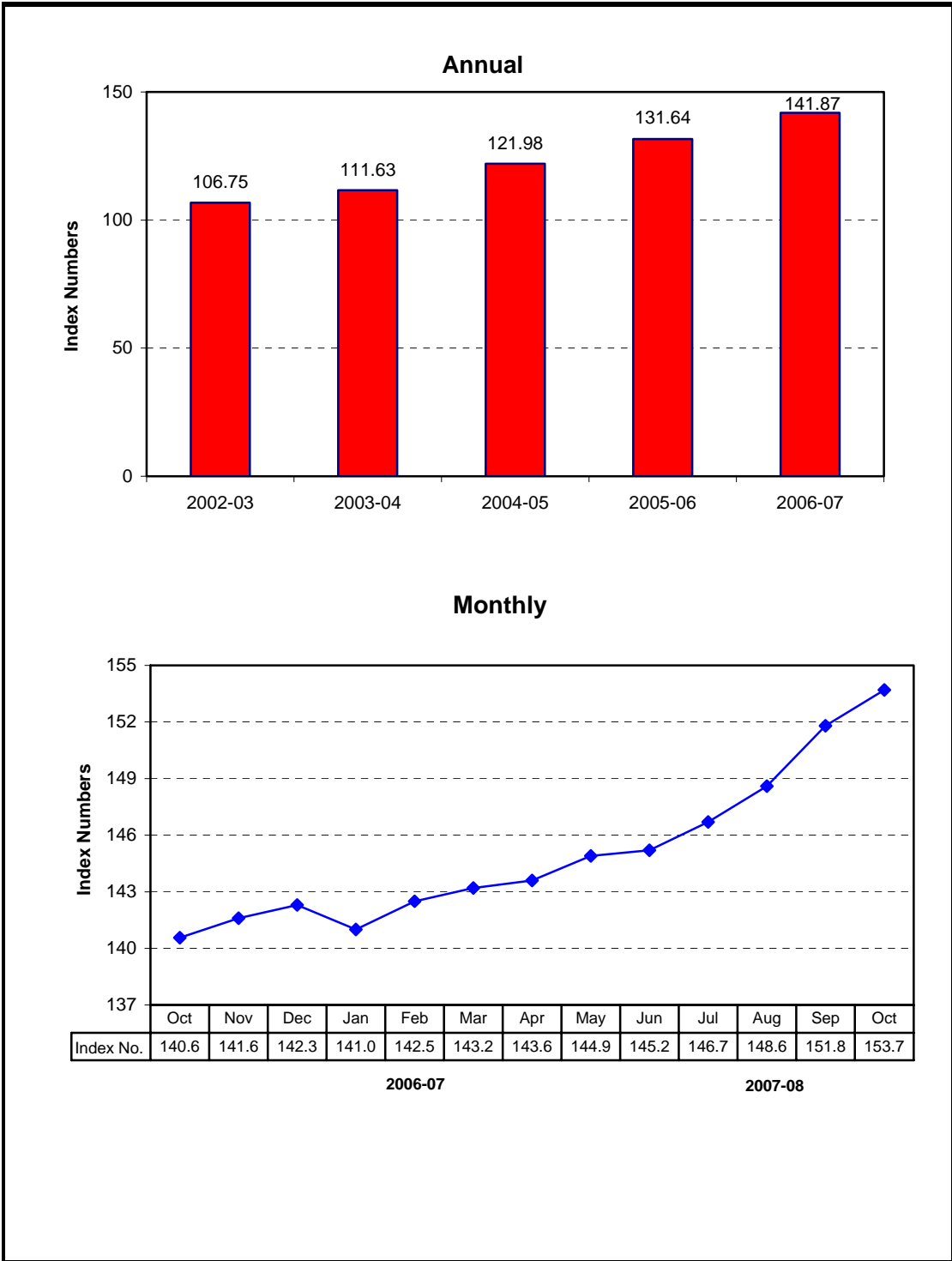


## 8.1 Combined Consumer Price Index Numbers by Commodity Groups - All Urban (2000-01=100)

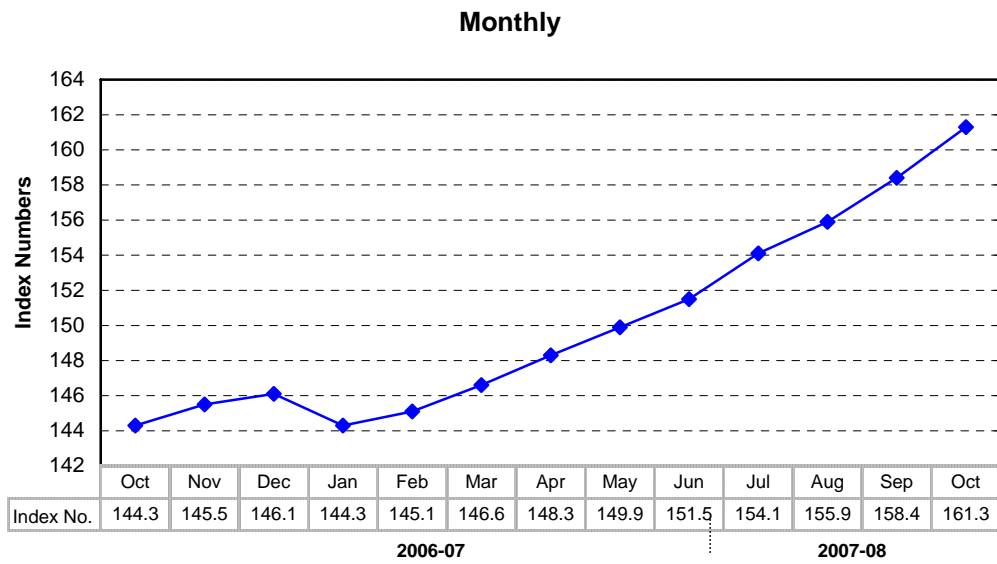
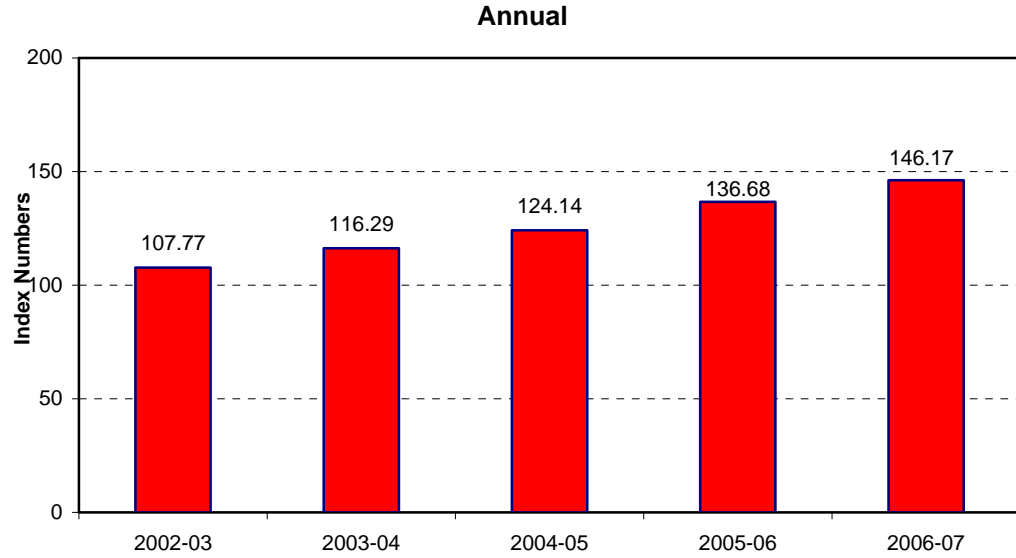
Year / Month	General	Food	Apparel	House	Fuel	Household	Transportation	Recreation	Education	Cleaning	Medicare
		Beverages and Tobacco	Textile and Footwear		and Lighting	Furniture and Equipment	and Communi- cation	Entertain- ment & Education		Laundry and Personal Appearance	
2002-03	<b>106.75</b>	105.40	106.78	103.54	117.81	106.90	111.60	107.21	109.92	107.37	105.59
2003-04	<b>111.63</b>	111.74	109.69	102.20	121.30	110.68	115.43	106.08	114.19	111.29	106.99
2004-05	<b>121.98</b>	125.69	112.98	120.42	125.77	117.34	125.11	105.93	117.55	115.90	107.94
2005-06	<b>131.64</b>	134.39	117.58	132.36	137.09	123.41	145.90	105.65	125.03	119.49	110.66
2006-07	<b>141.87</b>	148.21	123.70	141.21	149.43	131.64	148.96	105.76	133.82	124.53	120.91
2006											
Oct.	<b>140.57</b>	146.67	121.02	139.53	148.12	129.86	151.44	105.86	133.20	122.56	120.26
Nov.	<b>141.59</b>	148.69	121.32	140.14	147.26	130.59	151.60	105.87	133.47	123.54	120.26
Dec.	<b>142.26</b>	149.59	121.91	140.67	148.21	131.00	151.72	105.85	133.53	124.29	120.92
2007											
Jan.	<b>141.01</b>	146.27	122.46	141.24	149.05	132.31	148.63	105.79	133.70	124.75	121.54
Feb.	<b>142.47</b>	148.35	125.09	142.10	151.13	132.97	148.74	105.56	134.97	125.19	121.72
Mar.	<b>143.17</b>	149.67	127.10	142.89	151.34	133.62	145.45	105.52	135.15	125.66	123.39
Apr.	<b>143.62</b>	150.10	127.72	143.50	151.33	134.12	145.52	105.50	136.46	126.23	123.39
May.	<b>144.94</b>	152.77	127.95	144.28	151.05	134.33	145.53	105.81	136.62	126.79	124.00
Jun.	<b>145.23</b>	152.31	128.61	145.82	151.06	134.76	145.60	105.85	137.11	127.42	124.18
Jul.	<b>146.70</b>	154.58	129.06	146.85	151.16	135.99	146.24	105.79	137.76	128.60	129.23
Aug.	<b>148.64</b>	158.26	129.48	148.03	151.72	137.05	146.58	105.85	138.17	129.08	129.26
Sep.	<b>151.80</b>	164.83	129.74	149.26	152.74	137.58	146.75	105.86	138.21	130.71	129.51
Oct.	<b>153.66</b>	168.18	130.97	150.43	152.76	137.99	146.76	106.21	138.74	132.77	129.75

Source : Federal Bureau of Statistics

## Index Numbers of Consumer Prices (2000 - 01=100)



## Index Numbers of Wholesale Prices (2000- 01=100)



## 8.2 Index Numbers of Wholesale Prices by Commodity Groups (2000-01=100)

Year/ Month	General	Food	Raw Materials	Fuel,Lighting and Lubricants	Manufactures	Building Materials
2002-03	<b>107.77</b>	105.62	115.51	115.95	103.67	102.90
2003-04	<b>116.29</b>	112.98	135.12	119.23	111.83	126.46
2004-05	<b>124.14</b>	125.03	110.44	138.01	113.05	143.79
2005-06	<b>136.68</b>	133.78	121.93	174.57	115.39	144.18
2006-07	<b>146.17</b>	145.67	138.85	184.10	119.91	151.93
2006						
Oct.	<b>144.26</b>	143.41	128.25	185.88	119.03	147.19
Nov.	<b>145.54</b>	145.02	135.10	186.12	118.76	148.78
Dec.	<b>146.08</b>	145.31	140.15	186.09	118.76	149.28
2007						
Jan.	<b>144.31</b>	144.40	141.75	177.91	118.96	149.91
Feb.	<b>145.07</b>	145.76	142.40	176.60	119.05	157.13
Mar.	<b>146.55</b>	146.79	142.96	180.02	120.49	156.57
Apr.	<b>148.25</b>	147.77	144.83	184.93	121.14	157.01
May.	<b>149.87</b>	150.86	145.86	185.87	121.39	156.74
Jun.	<b>151.52</b>	153.17	144.05	189.25	122.06	156.68
Jul.	<b>154.10</b>	155.72	148.27	193.82	122.57	159.92
Aug.	<b>155.90</b>	158.78	153.99	192.14	123.78	161.36
Sep.	<b>158.42</b>	163.56	145.95	197.38	124.36	161.47
Oct.	<b>161.30</b>	165.61	147.54	206.84	124.56	161.35

Source : Federal Bureau of Statistics

### 8.3 Combined Sensitive Price Indicator (SPI) by Income Groups (2000-01 =100)

Year/ Month	INCOME GROUP				Combined	
	Group-I	Group-II	Group-III	Group-IV		
	Up to Rs.3000	Rs.3001 to Rs.5000	Rs.5001 to Rs.12000	Above Rs.12000		
2002-03	107.06	107.77	107.66	108.49	<b>107.53</b>	
2003-04	114.38	114.88	114.32	114.58	<b>113.93</b>	
2004-05	127.59	127.50	127.01	127.35	<b>126.52</b>	
2005-06	136.56	136.15	135.99	139.80	<b>136.43</b>	
2006-07	151.34	150.44	149.97	152.32	<b>149.29</b>	
2006	Oct.	149.29	148.41	148.31	151.71	<b>147.90</b>
	Nov.	152.79	151.68	151.11	153.41	<b>150.42</b>
	Dec.	153.95	152.87	152.25	154.27	<b>151.45</b>
2007	Jan.	151.92	150.65	149.91	151.79	<b>148.78</b>
	Feb.	152.06	150.79	150.07	151.52	<b>148.71</b>
	Mar.	152.04	151.19	150.55	152.36	<b>149.72</b>
	Apr.	152.18	151.36	150.58	152.33	<b>149.91</b>
	May.	154.27	153.45	152.53	153.76	<b>151.74</b>
	Jun.	156.56	155.67	154.61	155.29	<b>153.70</b>
	Jul.	158.84	157.82	156.54	156.66	<b>155.42</b>
	Aug.	161.50	160.55	159.53	159.63	<b>158.45</b>
	Sep.	161.67	165.75	164.66	163.24	<b>162.29</b>
	Oct.	168.18	167.09	165.52	164.08	<b>163.71</b>

Note: SPI figures revised as it is computed on 53 items instead of 51 items.

Source : Federal Bureau of Statistics

## 8.4 Bullion Prices

(Rupees per 10 grams)

Year / Month		GOLD TEZABI		SILVER TEZABI	
		Karachi	Lahore	Karachi	Lahore
2002-03		6,378	6,398	90	94
2003-04		7,328	7,337	92	111
2004-05		8,216	8,238	118	138
2005-06		10,317	10,307	180	176
2006-07		12,619	12,603	228	231
2006	Oct.	11,700	11,753	204	208
	Nov.	12,448	12,446	222	229
	Dec.	12,516	12,540	237	238
2007	Jan.	12,443	12,458	238	239
	Feb.	12,972	12,970	242	243
	Mar.	12,956	12,945	241	243
	Apr.	13,253	13,254	246	248
	May.	13,136	13,124	245	245
	Jun.	12,988	12,859	246	247
	Jul.	13,054	12,946	246	244
	Aug.	13,096	12,946	240	244
	Sep.	13,613	13,592	245	246
	Oct.	14,581	14,546	252	250

Figures are monthly / yearly averages

Source: Daily Business Recorder