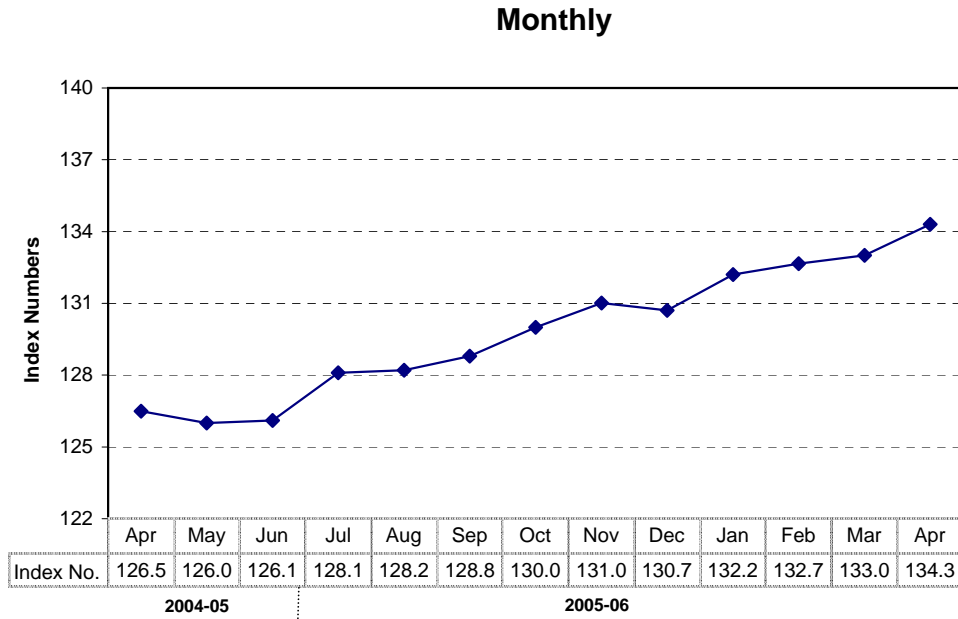
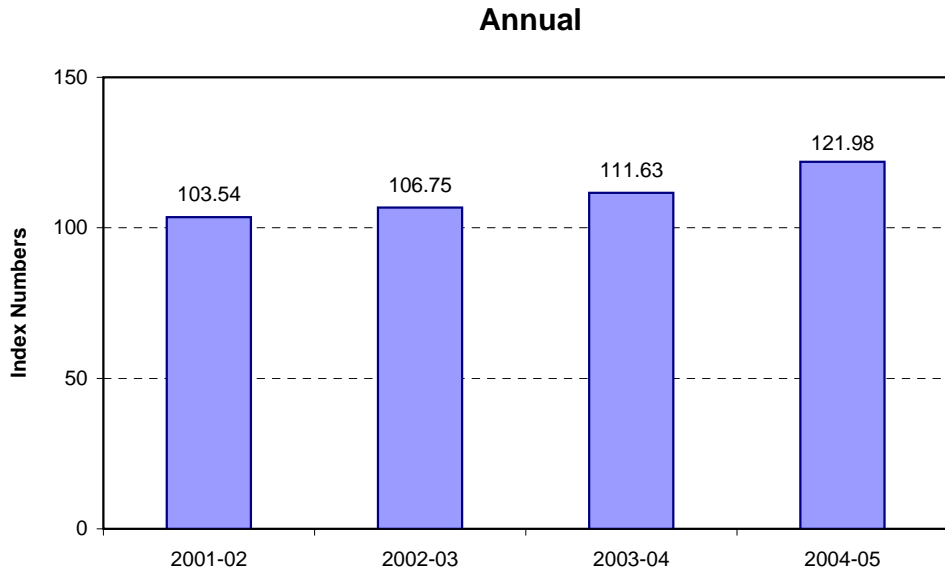


**8.1 Combined Consumer Price Index Numbers
by Commodity Groups - All Urban
(Base: 2000-01=100)**

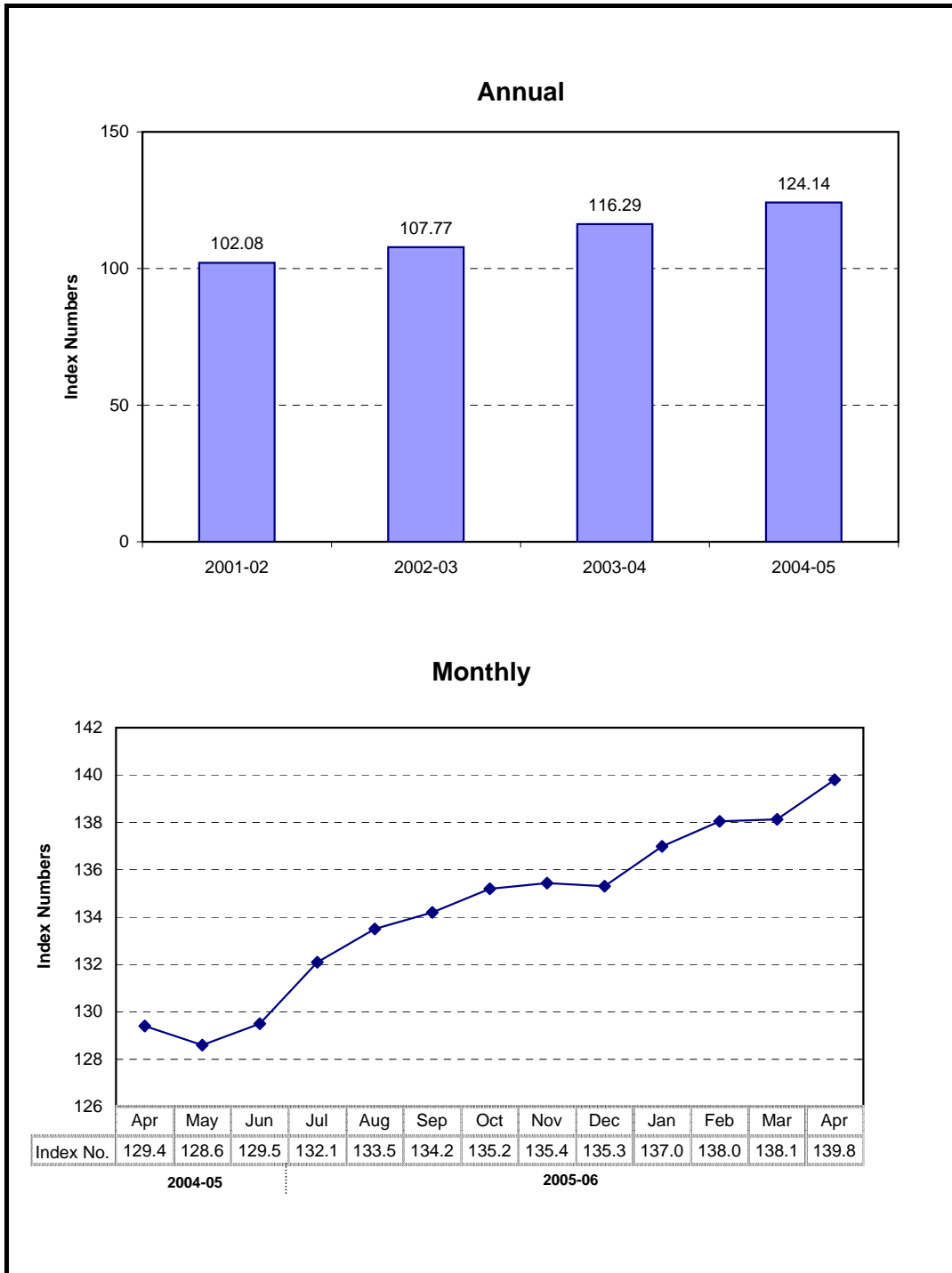
Year / Month	General	Food	Apparel	House	Fuel	Household	Transportation	Recreation	Education	Cleaning	Medicare	
		Beverages and Tobacco	Textile and Footwear		and Lighting	Furniture and Equipment	and Communi- cation	Entertain- ment & Education		Laundry and Personal Appearance		
2001- 02	103.54	102.50	103.23	102.80	109.47	103.93	105.96	106.30	104.97	102.50	102.37	
2002-03	106.75	105.40	106.78	103.54	117.81	106.90	111.60	107.21	109.92	107.37	105.59	
2003-04	111.63	111.74	109.69	102.20	121.30	110.68	115.43	106.08	114.19	111.29	106.99	
2004-05	121.98	125.69	112.98	120.42	125.77	117.34	125.11	105.93	117.55	115.90	107.94	
2005	Apr.	126.53	132.37	114.72	124.36	127.78	119.54	131.51	105.91	120.05	116.66	108.13
	May	125.97	129.98	115.47	125.48	127.27	119.83	132.84	105.90	120.22	116.98	108.22
	Jun.	126.09	128.84	115.71	126.62	127.45	120.21	136.08	105.88	120.82	117.31	108.31
	Jul.	128.13	132.64	115.76	127.53	130.19	120.67	136.36	105.63	121.45	117.60	108.95
	Aug.	128.18	131.17	115.93	128.49	131.39	121.05	139.88	105.59	122.48	117.72	109.14
	Sep.	128.82	131.14	115.91	129.48	132.66	121.31	143.77	105.61	123.03	117.76	109.47
	Oct.	130.03	132.69	116.63	130.55	133.03	121.90	146.09	105.56	124.40	118.46	109.48
	Nov.	131.02	134.42	117.05	131.43	133.25	122.18	146.26	105.61	124.45	118.68	109.58
	Dec.	130.66	132.72	117.22	132.24	133.63	123.08	146.73	105.57	124.45	119.15	110.28
2006	Jan.	132.23	134.56	117.66	133.02	140.83	123.43	147.38	105.64	124.60	119.42	110.63
	Feb.	132.66	134.88	117.82	133.71	141.86	123.70	147.44	105.70	124.60	119.80	111.34
	Mar.	132.97	135.16	118.48	134.27	141.41	124.39	147.53	105.73	125.21	119.96	111.40
	Apr.	134.33	137.19	119.04	135.10	141.49	125.34	149.09	105.70	128.00	120.76	112.09

Source : Federal Bureau of Statistics

Index Number of Consumer Prices (2000 - 01=100)



Index Numbers of Wholesale Prices (2000- 01=100)



8.2 Index Numbers of Wholesale Prices by Commodity Groups (Base: 2000-01=100)

Year/ Month	General	Food	Raw Materials	Fuel,Lighting and Lubricants	Manufactures	Building Materials
2001-02	102.08	102.05	100.95	103.08	101.91	101.18
2002-03	107.77	105.62	115.51	115.95	103.67	102.90
2003-04	116.29	112.99	135.12	116.23	111.83	126.46
2004-05	124.14	125.03	110.44	138.01	113.05	143.79
2005						
Apr.	129.35	130.44	113.21	150.12	114.49	143.56
May	128.59	129.42	111.86	150.12	113.69	143.31
Jun.	129.50	129.08	112.50	154.92	114.17	142.22
Jul.	132.08	132.75	119.03	156.56	114.88	142.56
Aug.	133.45	131.65	120.05	165.33	114.55	145.73
Sep.	134.17	131.05	114.41	172.53	114.61	146.04
Oct.	135.20	132.52	118.49	172.53	115.15	144.87
Nov.	135.44	132.91	119.33	172.53	115.16	144.99
Dec.	135.26	132.07	120.13	172.54	115.99	142.76
2006						
Jan.	136.99	133.17	124.96	177.31	116.30	140.06
Feb.	138.04	134.09	125.92	179.01	117.18	140.82
Mar.	138.13	134.26	123.97	179.54	117.36	141.25
Apr.	139.83	136.28	123.41	182.28	117.80	146.73

Source : Federal Bureau of Statistics

8.3 Combined Sensitive Price Indicator (SPI) by Income Groups (Base 2000-01 =100)

Year/ Month		INCOME GROUP				Combined
		Group-I Up to Rs.3000	Group-II Rs.3001 to Rs.5000	Group-III Rs.5001 to Rs.12000	Group-IV Above Rs.12000	
2001-02		103.36	103.74	103.60	104.06	103.60
2002-03		107.06	107.77	107.66	108.49	107.53
2003-04		114.38	114.88	114.32	114.58	113.93
2004-05		127.59	127.50	127.01	127.35	126.52
2005	Mar.	129.86	129.64	129.01	129.98	128.62
	Apr.	131.53	131.38	130.93	132.12	130.81
	May	130.19	130.08	129.92	131.70	130.09
	Jun.	131.10	130.94	130.77	132.45	130.88
	Jul.	132.87	132.82	132.81	135.38	133.15
	Aug.	133.21	133.05	132.85	135.16	132.93
	Sep.	133.51	133.30	133.25	136.74	133.85
	Oct.	133.58	133.32	133.39	138.13	134.59
	Nov.	134.76	134.55	134.69	139.39	135.89
	Dec.	134.43	134.06	134.08	138.78	135.21
2006	Jan.	135.51	135.35	135.41	139.87	135.82
	Feb.	137.49	137.10	136.79	140.61	136.71
	Mar.	138.65	138.07	137.59	141.11	137.54

Note: SPI figures revised as it is computed on 53 items instead of 51 items.

Source : Federal Bureau of Statistics

8.4 Bullion Prices

(Rupees per 10 grams)

Year / Month	GOLD TEZABI		SILVER TEZABI			
	Karachi	Lahore	Karachi	Lahore		
2000- 01	5,363	5,373	92	92		
2001- 02	5,865	5,893	93	94		
2002-03	6,378	6,398	90	94		
2003-04	7,328	7,337	92	111		
2004-05	8,216	8,238	118	138		
2005	Apr.	8,346	8,379	115	141	
	May	8,326	8,333	115	141	
	Jun.	8,496	8,485	148	141	
	Jul.	8,456	8,467	165	142	
	Aug.	8,589	8,593	165	144	
	Sep.	8,830	8,838	165	143	
	Oct.	9,158	9,189	165	145	
	Nov.	9,369	9,356	165	150	
	Dec.	9,968	9,946	178	160	
	2006	Jan.	10,888	10,524	180	168
		Feb.	10,836	10,952	180	173
		Mar.	10,856	10,852	180	182
Apr.		11,872	11,881	180	243	

Figures are monthly / yearly averages

Source: Daily Business Recorder