

## 6.1 Government of Pakistan Treasury Bills

(Million Rupees)

PERIOD	3 months Government of Pakistan Treasury Bills					6 months Government of Pakistan Treasury Bills			
	Issue	Discount		Discount Paid	Outstanding Balance	Issue	Discount		Discharged
		Allowed	Discharged				Allowed	Discharged	
2000 Dec.	-	-	14,447.7	302.3	-	379.3	20.7	-	
2001 Jun.	9,218.9	251.1	23,794.9	605.1	14,679.1	13,821.4	879.5	379.3	
2001 Dec.	982.7	17.3	6,255.8	144.2	7,954.8	8,079.2	321.7	13,820.9	
2002 Jun.	-	-	4,934.9	65.2	11,250.2	12,943.9	407.0	8,079.2	
2002 Dec.	495.6	4.5	-	-	495.6	12,970.3	279.7	12,943.9	
2003 Jun.	-	-	17,222.3	77.7	498.1	1,487.7	12.4	12,970.3	
2003 Dec.	-	-	5,183.2	16.8	10,365.2	297.6	2.4	24,976.9	
2004 Jun.	-	-	20,926.6	73.4	30,356.2	-	-	297.6	
2004 Dec.	15,113.8	136.2	17,332.4	117.6	61,089.6	-	-	-	
2005 Jun.	74,533.5	1,237.8	76,332.8	867.2	254,698.5	59,097.9	273.1	-	
2005 Dec.	2,734.1	50.9	8,280.6	154.4	14,615.3	1,728.9	71.1	59,097.9	
2005 Mar.	76,332.8	867.2	15,113.8	136.2	214,388.0	37,368.7	1,001.3	1,083.8	
Apr.	96,998.1	1,297.9	75,762.6	687.4	235,623.6	7,881.9	278.1	1,230.4	
May	83,166.8	1,344.8	62,292.6	673.4	256,497.8	490.9	19.1	2,405.2	
Jun.	74,533.5	1,237.8	76,332.8	867.2	254,698.5	59,097.9	273.1	-	
Jul.	38,554.2	670.8	96,998.1	1,297.9	196,254.6	35,512.7	1,412.3	26,892.4	
Aug.	15,496.7	278.3	83,166.8	1,344.8	128,584.5	15,527.7	622.3	976.7	
Sep.	102,669.6	1,890.4	110,140.0	1,856.4	121,114.1	4,997.5	202.5	37,368.7	
Oct.	8,197.2	152.8	9,579.5	170.5	119,731.8	480.5	19.5	7,881.9	
Nov.	3,683.9	68.7	103,253.9	1,896.1	20,161.8	912.5	37.5	490.9	
Dec.	2,734.1	50.9	8,280.6	154.4	14,615.3	1,728.9	71.1	59,097.9	
2006 Jan.	13,767.0	256.6	8,197.2	152.8	20,185.0	2,669.6	110.3	35,512.7	
Feb.	5,988.4	111.6	3,683.9	68.7	22,489.5	480.2	19.9	15,527.7	
Mar.	13,581.8	253.2	16,304.8	303.9	19,766.5	3,872.5	160.1	4,997.5	

Note : Six months Government of Pakistan Treasury Bills restarted w. e. f. June 1998 and 3 & 12 months Government of Pakistan Treasury Bills restarted w.e.f July 1998.

## 6.1 Government of Pakistan Treasury Bills

(Million Rupees)

PERIOD	6 months Government of Pakistan Treasury Bills		12 months Government of Pakistan Treasury Bills (Auctioned and Rollover)						
	Discount Paid	Outstanding Balance	Issue	Discount Allowed	Discharged	Discount Paid	Outstanding Balance		
2000	Dec.	-	31,660.7	206.0	23.6	655.1	67.4	17,748.7	
2001	Jun.	20.7	40,986.1	3,367.7	432.3	-	-	48,431.8	
	Dec.	879.5	42,737.7	2,869.3	241.0	206.0	23.6	59,872.5	
2002	Jun.	321.7	118,439.3	1,682.6	117.4	3,367.7	432.3	78,443.8	
	Dec.	407.0	192,607.3	18,829.1	820.9	2,869.3	241.0	180,325.0	
2003	Jun.	279.7	148,617.6	25,403.2	596.8	1,682.6	117.4	253,908.5	
	Dec.	223.1	78,346.6	392.3	7.7	18,829.1	820.9	297,695.1	
2004	Jun.	2.4	78,909.1	-	-	25,403.2	596.8	236,420.9	
	Dec.	-	118,457.3	-	-	196.1	3.9	91,601.7	
2005	Jun.	-	132,708.3	48,360.1	1,229.2	-	-	65,798.8	
	Dec.	2,335.8	59,159.9	82,036.8	7,174.7	-	-	329,870.2	
2005	Mar.	16.2	68,873.4	2,968.7	169.4	20,706.9	412.2	56,269.9	
	Apr.	19.6	75,524.8	1,774.3	125.7	16,117.5	332.5	41,926.7	
	May	44.8	73,610.5	3,012.3	237.7	27,500.3	599.7	17,438.7	
	Jun.	-	132,708.3	48,360.1	1,229.2	-	-	65,798.8	
	Jul.	557.6	141,328.7	62,892.7	5,332.3	535.6	14.4	128,155.9	
	Aug.	23.4	155,879.7	37,909.2	3,290.8	534.9	15.1	165,530.2	
	Sep.	1,001.3	123,508.6	15,722.5	1,377.7	6,798.7	201.3	174,454.0	
	Oct.	278.1	116,107.2	14,069.5	1,230.5	192.6	7.4	188,330.9	
	Nov.	19.1	116,528.8	59,676.1	5,218.9	287.3	12.7	247,719.7	
	Dec.	2,335.8	59,159.9	82,150.5	7,184.7	-	-	329,870.2	
	2006	Jan.	1,412.3	26,316.7	39,647.9	3,468.4	1,239.4	60.6	368,278.7
		Feb.	622.3	11,269.1	13,561.8	1,188.3	94.8	5.2	381,745.6
Mar.		202.5	10,144.2	53,022.2	4,646.4	2,968.7	169.4	431,799.2	

## 6.2 Sale / Purchase of Treasury Bills Under Open Market Operation by SBP with Banks

### SALE

(Billion Rupees )

PERIOD	2001-02		2002-03		2003-04		2004-05		2005-06	
	Bid Amount		Bid Amount		Bid Amount		Bid Amount		Bid Amount	
	Offered	Accepted	Offered	Accepted	Offered	Accepted	Offered	Accepted	Offered	Accepted
July	33.2	22.1	16.8	12.0	72.1	41.5	74.3	71.5	56.5	46.8
August	10.7	7.5	-	-	19.5	8.0	66.9	57.9	86.0	65.2
September	5.8	4.0	30.1	16.9	101.8	76.0	13.2	4.0	83.9	69.7
October	-	-	-	-	29.9	13.0	61.8	52.6	14.0	9.0
November	-	-	27.4	13.0	-	-	59.9	42.4	32.0	26.5
December	-	-	-	-	32.5	29.5	103.2	95.2	159.2	95.9
January	39.5	17.6	-	-	62.7	54.5	15.4	6.5	82.5	67.1
February	6.4	5.2	-	-	26.6	22.0	60.8	56.6	80.5	64.7
March	-	-	-	-	26.9	16.6	83.7	60.8	44.5	41.1
April	-	-	-	-	27.3	24.0	90.9	49.6		
May	-	-	-	-	16.0	4.9	73.1	49.2		
June	-	-	53.2	25.0	145.2	120.9	95.5	64.9		
<b>Average</b>										
per month	8.0	4.7	10.6	5.6	46.7	34.2	66.5	50.9	53.2	40.5
per day	0.2	0.2	0.4	0.2	1.6	1.1	2.2	1.7	1.8	1.4

### PURCHASE

PERIOD	Amount		Amount		Amount		Amount		Amount	
	Offered	Injected	Offered	Injected	Offered	Injected	Offered	Injected	Offered	Injected
	July	9.1	1.1	81.4	51.7	-	-	-	-	-
August	20.0	10.6	-	-	-	-	-	-	11.15	8.3
September	80.1	49.3	-	-	-	-	-	-	-	-
October	82.2	50.1	-	-	7.8	3.5	16.1	14.0	66.9	38.5
November	38.7	16.2	-	-	85.9	56.7	-	-	123.6	74.1
December	21.1	11.1	-	-	29.3	16.5	-	-	-	-
January	0.6	-	-	-	-	-	40.3	21.3	139.6	111.5
February	44.2	23.9	-	-	-	-	-	-	60.6	42.8
March	-	-	-	-	-	-	-	-	12.7	10.7
April	13.4	7.0	-	-	-	-	-	-	234.9	106.6
May	49.6	35.3	6.1	3.1	-	-	20.0	9.0		
June	40.9	36.9	-	-	-	-	-	-		
<b>Average</b>										
per month	33.3	20.1	7.3	4.6	10.2	6.4	6.4	3.7	54.1	32.7
per day	1.1	0.7	0.2	0.2	0.3	0.2	0.2	0.1	1.8	1.1

Source: Exchange and Debt Management Department, SBP

### 6.3 SBP 3-Day Repo Facility MTBs / FIBs / PIBs (Outstanding)

#### Cash Accommodation

(Million Rupees)

PERIOD	2000-01	2001-02	2002-03	2003-04	2004-05	2005-06
July	29,776	75,176	94,168	-	700	23,861
August	44,034	38,835	9,490	-	10,600	48,241
September	64,924	47,412	87,535	-	84,760	45,245
October	438,180	107,366	214,984	10,440	63,324	116,512
November	282,664	211,461	103,241	400	14,098	91,780
December	138,921	17,261	29,775	-	-	4,520
January	309,448	17,355	140,540	1,350	115,134	29,760
February	16,186	101,956	2,500	8,340	-	12,032
March	33,853	10,368	-	-	21,695	47,815
April	114,117	45,803	6,625	24,745	800	243,238
May	41,060	130,386	-	1,245	70,787	
June	43,528	24,972	-	-	139,550	
<b>Average</b>						
per month	129,724	69,029	57,405	3,877	43,454	55,250
per day	4,3,24	2,301	1,913	129	1,448	1,842

#### SBP 3-Day Repo Rates

(Percent per annum)

July	11.00	13.00	9.00	7.50	7.50	9.00
August	11.00	12.00	9.00	7.50	7.50	9.00
September	12.00	12.00	9.00	7.50	7.50	9.00
October	13.00	10.00	9.00	7.50	7.50	9.00
November	13.00	10.00	7.50	7.50	7.50	9.00
December	13.00	10.00	7.50	7.50	7.50	9.00
January	13.00	9.00	7.50	7.50	7.50	9.00
February	14.00	9.00	7.50	7.50	7.50	9.00
March	14.00	9.00	7.50	7.50	7.50	9.00
April	14.00	9.00	7.50	7.50	9.00	9.00
May	14.00	9.00	7.50	7.50	9.00	
June	14.00	9.00	7.50	7.50	9.00	

Note: Rates applicable against T-bills & FIBs, PIBs

Source: Exchange and Debt Management Department, SBP

## 6.4 Auction of Government of Pakistan Market Treasury Bills (Auction Wise)

(Million Rupees)

AUCTION SETTLEMENT DATE	3 Months Treasury Bills				6 Months Treasury Bills	
	Amount Offered	Amount Accepted	Cutt-off Yield ( % )	Weighted Average ( % )	Amount Offered	Amount Accepted
<b>2004-05</b>						
14-04-05	98,296	98,296	6.3933	5.8140	-	-
28-04-05	-	-	-	-	20,010	8,160
12-05-05	85,920	84,470	7.3798	7.0261	-	-
26-05-05	-	-	-	-	22,711	510
09-06-05	84,250	73,275	7.5147	7.3801	33,501	23,326
23-06-05	8,150	2,525	7.5147	7.4790	50,283	38,108
<b>2005-06</b>						
07-07-05	42,150	36,225	7.6946	7.5489	42,800	34,675
21-07-05	13,150	3,000	7.6946	7.6946	7,275	2,250
04-08-05	19,800	6,750	7.8297	7.7488	26,875	13,375
19-08-05	27,175	9,025	7.9197	7.8436	13,075	2,775
01-09-05	101,375	96,125	8.1000	7.9919	16,075	4,550
15-09-05	29,500	5,300	8.1000	8.1000	7,750	500
29-09-05	30,935	3,135	8.1000	8.1000	3,950	150
13-10-05	9,150	3,450	8.1000	8.1000	3,400	250
27-10-05	10,800	4,900	8.1000	8.0954	2,300	250
10-11-05	1,403	353	8.1000	8.1000	900	150
24-11-05	8,600	3,400	8.1000	8.1000	4,600	800
8-12-05	1,758	Rejected	Rejected	Rejected	9,700	Rejected
22-12-05	9,685	2,785	8.1000	8.0895	13,850	1,800
05-01-06	19,600	13,800	8.1000	8.1000	4,300	1,300
19-01-06	1,500	200	8.1000	8.1000	3,450	600
02-02-06	13,550	3,400	8.1000	8.1000	3,800	500
16-02-06	8,200	2,700	8.1000	8.1000	3,850	Rejected
02-03-06	14,000	1,500	8.1000	8.1000	2,258	508
16-03-06	14,985	9,235	8.1000	8.1000	3,500	3,000
30-03-06	4,800	3,100	8.1000	8.1000	1,800	500
13-04-06	300	100	8,1000	8,1000	800	100
27-04-06	No Bid	No Bid	No Bid	No Bid	No Bid	No Bid

## 6.4 Auction of Government of Pakistan Market Treasury Bills (Auction Wise)

(Million Rupees)

AUCTION SETTLEMENT DATE	6 Months Treasury Bills		12 Months Treasury Bills			
	Cutt-off Yield ( % )	Weighted Average ( % )	Amount Offered	Amount Accepted	Cutt-off Yield ( % )	Weighted Average ( % )
<b>2004-05</b>						
14-04-05	-	-	1,900	1,900	7.2470	7.1046
28-04-05	7.1877	7.0762	-	-	-	-
12-05-05	-	-	4,575	3,250	8.2477	7.9110
26-05-05	7.8786	7.8234	-	-	-	-
09-06-05	7.9869	7.8970	16,450	12,000	8.4477	8.2952
23-06-05	7.9869	7.9564	57,800	40,400	8.4477	8.4009
<b>2005-06</b>						
07-07-05	7.9869	7.9761	58,100	54,825	8.6959	8.4561
21-07-05	7.9869	7.9677	24,642	13,400	8.6959	8.6884
04-08-05	8.0954	8.0231	45,100	38,350	8.7907	8.6986
19-08-05	8.1388	8.1056	11,800	2,850	8.7907	8.7865
01-09-05	8.1388	8.1245	13,800	7,750	8.7907	8.7830
15-09-05	8.1388	8.1388	6,800	3,900	8.7907	8.7907
29-09-05	8.1388	8.1388	9,300	5,450	8.7907	8.7896
13-10-05	8.1388	8.1388	4,300	700	8.7907	8.7907
27-10-05	8.1388	8.1388	14,900	14,600	8.7907	8.7687
10-11-05	8.1388	8.1388	18,650	7,150	8.7784	8.7674
24-11-05	8.2910	8.2583	65,045	57,745	8.7907	8.7666
8-12-05	Rejected	Rejected	25,500	19,600	8.7907	8.7874
22-12-05	8.2910	8.2451	72,012	69,612	8.7907	8.7648
05-01-06	8.2910	8.2742	38,125	34,725	8.7907	8.7768
19-01-06	8.2910	8.2910	9,795	8,345	8.7907	8.7523
02-02-06	8.2910	8.2910	13,050	11,250	8.7907	8.7843
16-02-06	Rejected	Rejected	5,800	3,500	8.7907	8.7907
02-03-06	8.2910	8.2910	6,850	6,000	8.7907	8.7808
16-03-06	8.2910	8.2910	16,300	14,200	8.7907	8.7832
30-03-06	8.2910	8.2910	38,915	36,915	8.7907	8.7897
13-04-06	8.2910	8.2910	16,050	14,650	8.7907	8.7878
27-04-06	No Bid	No Bid	600	500	8.7907	8.7907

Source: Exchange and Debt Management Department ,SBP

## 6.5 Auction of Pakistan Investment Bonds (PIBs)

(Million Rupees)

AUCTION SETTLEMENT DATE	Tenure	Coupon Rate (%)	Amount Offered	Amount Accepted	Price Accepted = Rs.100	Cut-off Yield Accepted (%)	Weighted Average Yield Accepted (%)
<b>2003-04</b>							
29-04-04	3-Years	6.00	7,977.00	3,227.00	106.27	3.7700	3.7342
	5-Years	7.00	15,871.10	8,471.10	109.21	4.9007	4.8665
	10-Years	8.00	23,795.70	15,135.70	110.98	6.4903	6.4533
29-05-04	3-Years	6.00	2,969.00	1,869.00	104.47	4.3506	4.2354
	5-Years	7.00	4,434.00	3,134.00	107.05	5.3492	5.2699
	10-Years	8.00	10,460.80	10,060.80	104.37	7.3698	7.1268
09-06-04	15-Years	9.00	8,410.90	3,665.90	100.01	8.9988	8.9935
	20-Years	10.00	10,536.00	3,566.00	100.05	9.9942	9.9927
<b>2004-05</b>							
18-08-04	3-Years	6.00	1,750.00	50.00	101.64	5.4005	5.4005
	5-Years	7.00	1,403.00	226.50	100.84	6.7990	6.3309
	10-Years	8.00	1,600.00	150.00	100.00	8.0000	7.9297
12-11-04	3-Years	6.00	350.00	-	-	-	-
	5-Years	7.00	800.00	150.00	101.05	6.7491	6.6994
	10-Years	8.00	875.00	50.00	100.54	7.9208	7.9208
28-03-05	3-Years	6.00	300.00	50.00	99.06	6.3500	6.3500
	5-Years	7.00	400.00	50.00	97.95	7.5000	7.5000
	10-Years	8.00	438.00	44.00	99.32	8.1000	8.1000

Source: Exchange and Debt Management Department, SBP

## 6.6 MONTHLY KIBOR

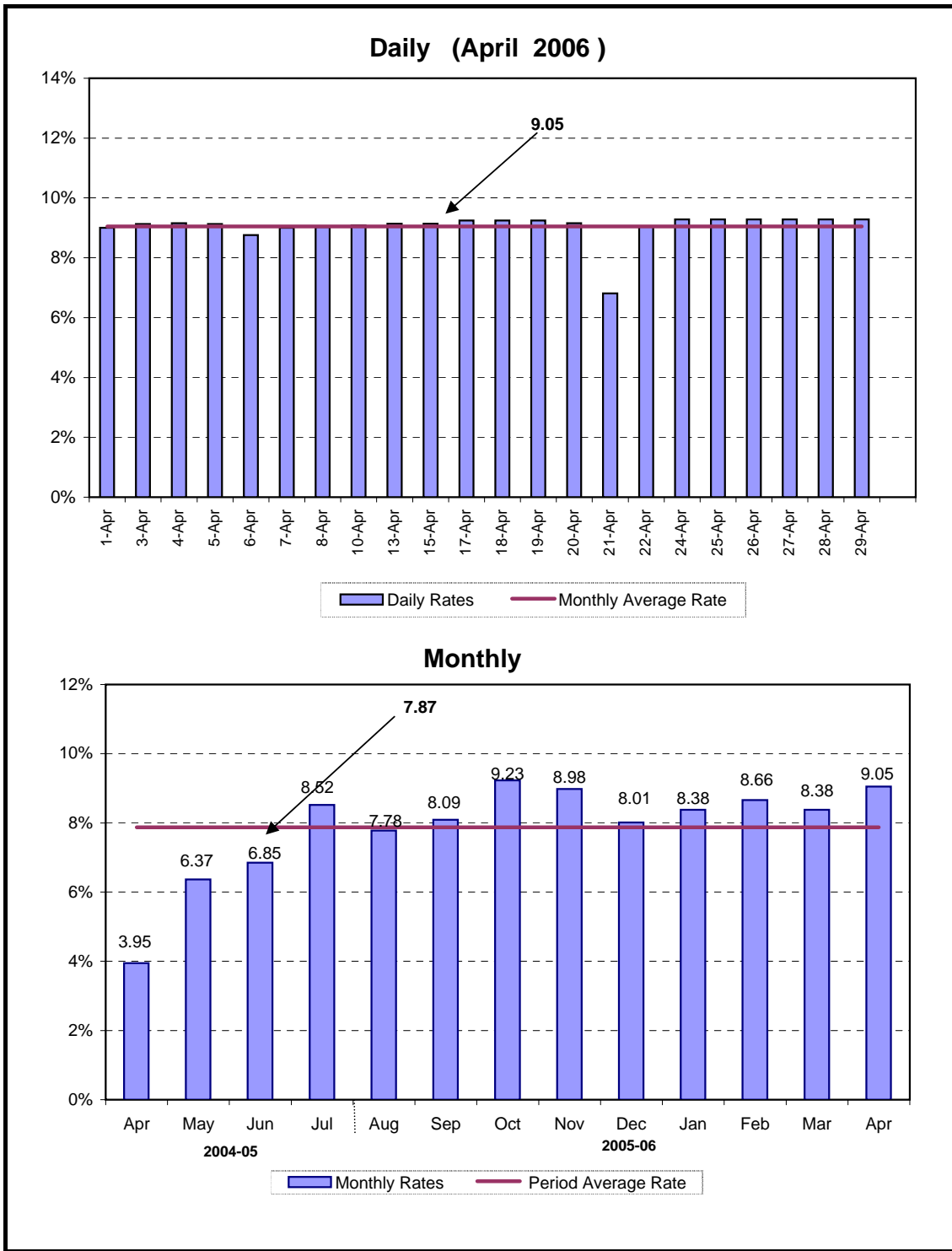
		(Percent per annum)													
Period		1 Week		2 Week		1Month		3 Month		6 Month		9 Month		12 Month	
		Bid	Offer	Bid	Offer	Bid	Offer	Bid	Offer	Bid	Offer	Bid	Offer	Bid	Offer
Mar.	Month Average	3.79	4.79	4.18	4.68	4.63	5.13	5.43	5.93	6.01	6.51	6.26	6.76	6.51	7.01
	End-Month	4.45	5.45	4.64	5.14	4.89	5.39	5.58	6.08	6.28	6.78	6.48	6.98	6.68	7.18
Apr.	Month Average	4.19	4.99	4.83	5.13	5.48	5.75	6.27	6.51	6.97	7.18	7.26	7.46	7.55	7.74
	End-Month	5.42	6.42	5.88	6.38	6.33	6.83	7.05	7.55	7.80	8.30	8.12	8.62	8.53	9.03
May	Month Average	6.19	7.19	6.55	7.05	7.08	7.58	7.86	8.36	8.48	8.98	8.86	9.36	9.25	9.75
	End-Month	3.83	4.83	4.97	5.47	6.17	6.67	7.65	8.15	8.34	8.84	8.81	9.31	9.18	9.68
Jun.	Month Average	6.02	6.99	6.58	7.06	6.93	7.41	7.36	7.84	7.88	8.36	8.25	8.73	8.64	9.12
	End-Month	8.21	9.21	7.93	8.43	7.71	8.21	7.75	8.25	8.21	8.71	8.48	8.98	8.83	9.33
Jul.	Month Average	7.60	8.60	7.72	8.22	7.80	8.30	8.02	8.52	8.40	8.90	8.64	9.14	8.93	9.43
	End-Month	8.08	9.08	8.10	8.60	8.14	8.64	8.26	8.76	8.60	9.10	8.80	9.30	9.05	9.55
Aug.	Month Average	7.35	8.35	7.57	8.07	7.73	8.23	8.07	8.57	8.43	8.93	8.72	9.22	9.03	9.53
	End-Month	7.42	8.42	7.53	8.03	7.65	8.15	8.04	8.54	8.37	8.87	8.69	9.19	9.04	9.54
Sep.	Month Average	7.53	8.53	7.74	8.24	7.85	8.35	8.07	8.57	8.40	8.90	8.71	9.21	9.02	9.52
	End-Month	7.29	8.29	7.64	8.14	7.89	8.39	8.08	8.58	8.44	8.94	8.71	9.21	9.01	9.51
Oct.	Month Average	8.04	9.04	8.15	8.65	8.18	8.68	8.30	8.80	8.53	9.03	8.75	9.25	9.06	9.56
	End-Month	8.35	9.35	8.41	8.91	8.40	8.90	8.45	8.95	8.60	9.10	8.78	9.28	9.10	9.60
Nov.	Month Average	8.13	9.13	8.27	8.77	8.33	8.83	8.48	8.98	8.63	9.13	8.82	9.32	9.09	9.59
	End-Month	8.25	9.25	8.35	8.85	8.36	8.86	8.55	9.05	8.69	9.19	8.87	9.37	9.10	9.60
Dec.	Month Average	7.51	8.51	7.85	8.35	8.14	8.64	8.40	8.90	8.64	9.14	8.88	9.38	9.11	9.61
	End-Month	7.39	8.39	7.70	8.20	7.92	8.42	8.26	8.76	8.55	9.05	8.85	9.35	9.08	9.58
2006 Jan.	Month Average	7.84	8.84	8.07	8.57	8.19	8.69	8.38	8.88	8.63	9.13	8.87	9.37	9.11	9.61
	End-Month	7.93	8.93	8.14	8.64	8.26	8.76	8.48	8.98	8.73	9.23	8.91	9.41	9.13	9.63
Feb.	Month Average	7.92	8.92	8.11	8.61	8.24	8.74	8.50	9.00	8.75	9.25	8.94	9.44	9.17	9.67
	End-Month	7.97	8.97	8.09	8.59	8.21	8.71	8.58	9.08	8.89	9.39	9.05	9.55	9.28	9.78
Mar.	Month Average	7.85	8.85	8.07	8.57	8.19	8.69	8.52	9.02	8.84	9.34	9.06	9.56	9.25	9.75
	End-Month	8.22	9.22	8.31	8.81	8.34	8.84	8.63	9.13	8.93	9.43	9.11	9.61	9.29	9.79

KIBOR :Karachi Interbank Offered Rate

Source: Exchange & Debt Management Department,SBP



# Call Money Rate



## 6.7 Call Money Rate

(Percent per annum)

MONTH	2000-2001	2001-2002	2002-2003	2003-2004	2004-05	2005-06
July	5.63	6.94	5.59	0.74	1.90	8.52
August	7.63	8.30	5.32	1.40	3.03	7.78
September	6.82	9.19	7.30	1.01	5.51	8.09
October	12.30	10.41	7.96	2.34	3.40	9.23
November	12.93	9.36	4.90	2.67	4.04	8.98
December	10.54	6.09	4.61	2.43	2.79	8.01
January	9.12	3.61	4.12	1.72	6.53	8.38
February	6.63	5.48	2.36	2.57	2.67	8.66
March	6.71	4.75	1.14	0.99	5.02	8.38
April	10.53	5.66	2.71	3.38	3.95	9.05
May	9.36	6.31	3.83	1.65	6.37	
June	9.28	4.83	0.92	1.46	6.85	
<b>Average of the period</b>	<b>8.96</b>	<b>6.74</b>	<b>4.23</b>	<b>1.86</b>	<b>4.34</b>	

Source: Daily Business Recorder

## 6.8 SBP Rates for Market to Market (M 2 M) of Major Currencies

MONTH	US Dollar			Euro			Japanese Yen			Pound Sterling		
	Ready	Week	1Month	Ready	Week	1Month	Ready	Week	1Month	Ready	Week	1 Month
1-Apr-06	59.9990	60.0295	60.1160	72.6888	72.7566	72.9620	0.5098	0.5106	0.5131	60.1160	104.3313	104.5054
3-Apr-06	60.0250	60.0588	60.1505	72.3331	72.4045	72.6149	0.5062	0.5069	0.5094	60.1505	103.7154	103.8977
4-Apr-06	60.0990	60.1403	60.2345	73.0894	73.1705	73.3953	0.5112	0.5120	0.5145	60.2345	104.9899	105.1806
5-Apr-06	60.1480	60.1865	60.2890	73.7565	73.8521	74.0671	0.5123	0.5131	0.5156	60.2890	105.4986	105.7001
6-Apr-06	60.0160	60.0535	60.1760	73.9967	74.0780	74.3282	0.5116	0.5124	0.5151	60.1760	105.6837	105.9236
7-Apr-06	59.9670	60.0128	60.1420	73.1148	73.2013	73.4624	0.5095	0.5104	0.5131	60.1420	105.0294	105.2809
8-Apr-06	59.9675	60.0090	60.1325	72.5307	72.6117	72.8636	0.5070	0.5078	0.5104	60.1325	104.6417	104.8822
10-Apr-06	60.0050	60.0485	60.1790	72.7231	72.8065	73.0678	0.5072	0.5080	0.5107	60.1790	104.8301	105.0841
12-Apr-06	59.9720	60.0180	60.1525	72.8570	72.9439	73.2133	0.5080	0.5088	0.5116	60.1525	105.3593	105.6251
13-Apr-06	59.9570	60.0060	60.1505	72.6109	72.7011	72.9825	0.5064	0.5073	0.5101	60.1505	105.2364	105.5205
14-Apr-06	59.9530	60.0043	60.1510	72.5461	72.6391	72.9224	0.5053	0.5062	0.5090	60.1510	105.1433	105.4306
15-Apr-06	59.9500	60.0015	60.1460	72.6024	72.6957	72.9771	0.5053	0.5062	0.5090	60.1460	105.0064	105.3502
17-Apr-06	59.9620	60.0133	60.1600	73.0217	73.1153	73.4007	0.5066	0.5075	0.5104	60.1600	105.4922	105.7808
18-Apr-06	59.9860	60.0350	60.1770	73.4409	73.5317	73.8238	0.5078	0.5087	0.5117	60.1770	106.1879	106.4733
19-Apr-06	60.0245	60.0720	60.2115	74.2353	74.3252	74.6124	0.5135	0.5144	0.5173	60.2115	107.3713	107.6549
20-Apr-06	60.0070	60.0550	60.2020	74.0936	74.1887	74.4763	0.5102	0.5110	0.5139	60.2020	107.0684	107.3637
21-Apr-06	59.9990	60.0443	60.1835	74.0358	74.1229	74.4053	0.5121	0.5130	0.5158	60.1835	107.0295	107.3117
22-Apr-06	60.0030	60.0579	60.2020	74.0587	74.1576	74.4462	0.5146	0.5156	0.5185	60.2020	107.0264	107.3176
24-Apr-06	60.0190	60.0753	60.2195	74.2765	74.3774	74.6673	0.5207	0.5221	0.5246	60.2195	107.5319	107.8233
25-Apr-06	60.0370	60.0875	60.2370	74.3708	74.4648	74.7769	0.5238	0.5250	0.5279	60.2370	107.2203	107.5263
26-Apr-06	60.0675	60.1180	60.2638	74.5648	74.6592	74.9673	0.5216	0.5227	0.5256	60.2638	107.2304	107.5278
27-Apr-06	60.0505	60.1070	60.2865	74.6878	74.7914	75.1331	0.5250	0.5260	0.5294	60.2865	107.3557	107.7127
28-Apr-06	60.0570	60.1070	60.2600	75.4166	75.5135	75.8351	0.5259	0.5269	0.5300	60.2600	108.6514	108.9674
29-Apr-06	60.0625	60.1138	60.2630	75.8740	75.9729	76.2922	0.5276	0.5286	0.5316	60.2630	109.7366	110.0484

## 6.8 SBP Rates for Market to Market (M 2 M) of Major Currencies

MONTH	Swiss Frank			Australian Dollar			Saudi Arabian Riyal			Kuwaiti Dinnar		
	Ready	Week	1 Month	Ready	Week	1 Month	Ready	Week	1 Month	Ready	Week	1 Month
1-Apr-06	46.0009	46.0571	46.2312	42.9563	42.9722	43.0157	15.9972	16.0064	16.0286	205.4444	205.5263	205.7499
3-Apr-06	45.7944	45.8527	46.0297	42.9959	43.0143	43.0613	16.0037	16.0135	16.0378	205.5264	205.6315	205.8680
4-Apr-06	46.2353	46.2998	46.4902	43.0038	43.0276	43.0746	16.0234	16.0357	16.0612	205.7727	205.8891	206.1272
5-Apr-06	46.7042	46.7859	46.9606	43.4900	43.5085	43.5659	16.0363	16.0475	16.0758	205.9581	206.1005	206.4338
6-Apr-06	46.8454	46.9128	47.1137	43.9227	43.9435	44.0139	16.0011	16.0121	16.0452	205.6399	205.7790	206.1810
7-Apr-06	46.3872	46.4555	46.6649	43.8479	43.8756	43.9503	15.9886	16.0019	16.0368	205.2540	205.4213	205.8389
8-Apr-06	46.0704	46.1350	46.3379	43.5814	43.6058	43.6763	15.9883	16.0002	16.0338	205.3154	205.4336	205.7817
10-Apr-06	46.1790	46.2452	46.4543	43.7106	43.7367	43.8127	15.9986	16.0111	16.0473	205.4403	205.5998	206.0219
12-Apr-06	46.2943	46.3627	46.5768	43.8635	43.8906	43.9718	15.9908	16.0039	16.0420	205.3238	205.4672	205.8713
13-Apr-06	46.2310	46.3016	46.5230	43.8076	43.8376	43.9255	15.9855	15.9995	16.0401	205.2865	205.4507	205.9138
14-Apr-06	46.1710	46.2432	46.4662	43.6458	43.6774	43.7665	15.9851	15.9997	16.0409	205.2798	205.4484	205.9225
15-Apr-06	46.1740	46.2462	46.4676	43.6346	43.6663	43.7535	15.9835	15.9981	16.0383	205.2555	205.4079	205.8420
17-Apr-06	46.4426	46.5153	46.7402	43.9042	43.9360	44.0257	15.9873	16.0018	16.0431	205.3036	205.4757	205.9463
18-Apr-06	46.8952	46.9667	47.2004	44.2727	44.3030	44.3893	15.9933	16.0072	16.0472	205.4139	205.5747	206.0327
19-Apr-06	47.3585	47.4290	47.6574	44.6402	44.6697	44.7553	16.0044	16.0179	16.0574	205.5458	205.6943	206.1367
20-Apr-06	47.1660	47.2418	47.4661	44.6122	44.6421	44.7346	15.9989	16.0125	16.0539	205.4788	205.6315	206.0865
21-Apr-06	47.0009	47.0697	47.2973	44.4953	44.5233	44.6098	15.9967	16.0097	16.0489	205.4514	205.5949	206.0232
22-Apr-06	47.0317	47.1079	47.3392	44.5942	44.6296	44.7202	15.9967	16.0122	16.0532	205.4686	205.6457	206.1148
24-Apr-06	47.2591	47.3369	47.5652	44.8912	44.9282	45.0177	16.0027	16.0186	16.0605	205.5269	205.7306	206.1394
25-Apr-06	47.2937	47.3668	47.6144	44.7126	44.7451	44.8383	16.0079	16.0223	16.0658	205.5815	205.7636	206.2381
26-Apr-06	47.2805	47.3540	47.5985	44.7233	44.7557	44.8450	16.0161	16.0304	16.0718	205.6930	205.8776	206.3617
27-Apr-06	47.2485	47.3269	47.5881	45.0589	45.0954	45.2116	16.0107	16.0266	16.0775	205.6348	205.8413	206.4429
28-Apr-06	47.9574	48.0312	48.2901	45.4031	45.4349	45.5329	16.0129	16.0270	16.0708	205.5339	205.7229	206.2180
29-Apr-06	48.5040	48.5798	48.8397	45.5154	45.5482	45.6432	16.0139	16.0282	16.0706	205.6688	205.8431	206.3307

Source: Exchange and Debt Management Department, SBP