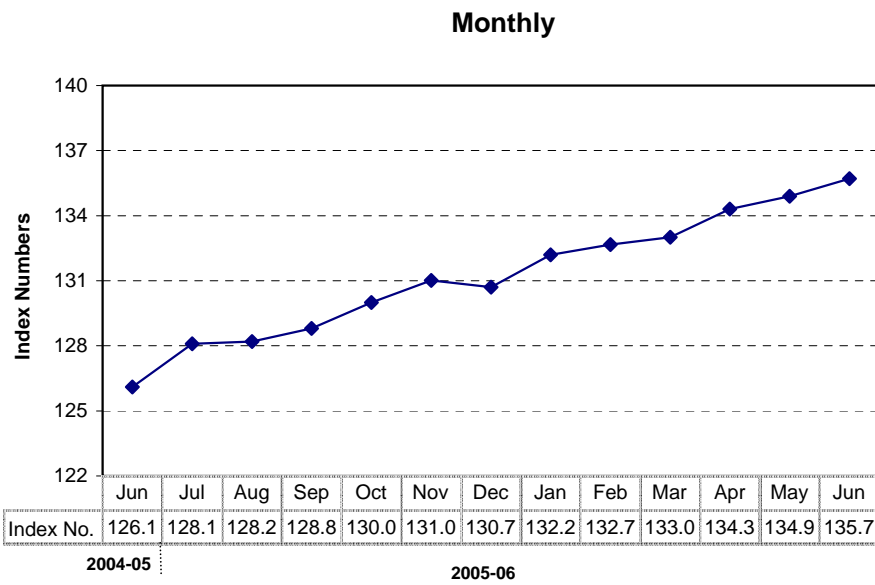
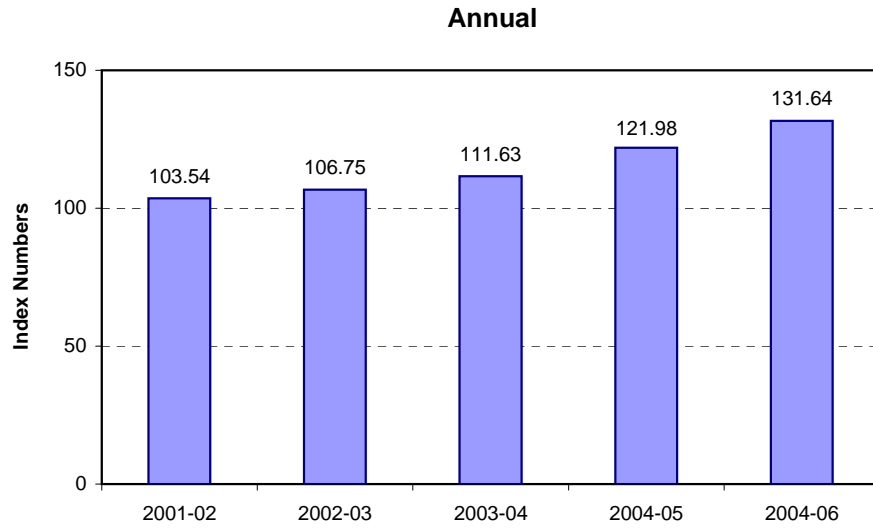


**8.1 Combined Consumer Price Index Numbers  
by Commodity Groups - All Urban  
(Base: 2000-01=100)**

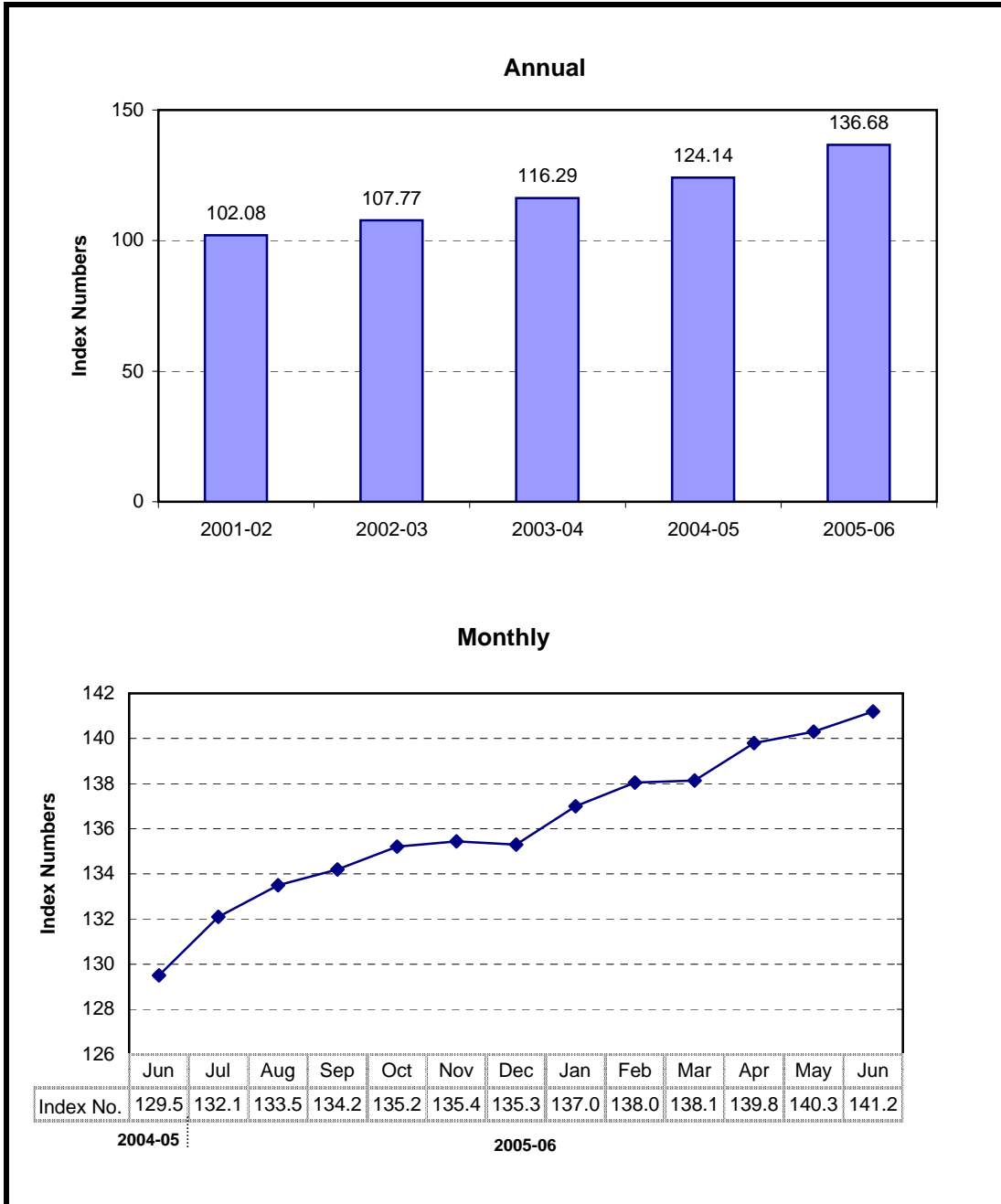
Year / Month	General	Food Beverages and Tobacco	Apparel Textile and Footwear	House Rent	Fuel and Lighting	Household Furniture and Equipment	Transpor- tation and Communi- cation	Recreation Entertain- ment & Education	Education	Cleaning Laundry and Personal Appearance	Medicare	
		2001-02	<b>103.54</b>	102.50	103.23	102.80	109.47	103.93	105.96	106.30	104.97	102.50
2002-03	<b>106.75</b>	105.40	106.78	103.54	117.81	106.90	111.60	107.21	109.92	107.37	105.59	
2003-04	<b>111.63</b>	111.74	109.69	102.20	121.30	110.68	115.43	106.08	114.19	111.29	106.99	
2004-05	<b>121.98</b>	125.69	112.98	120.42	125.77	117.34	125.11	105.93	117.55	115.90	107.94	
2005-06	<b>131.64</b>	134.39	117.58	132.36	137.09	123.41	145.90	105.65	125.03	119.49	110.66	
2005	Jun.	<b>126.09</b>	128.84	115.71	126.62	127.45	120.21	136.08	105.88	120.82	117.31	108.31
	Jul.	<b>128.13</b>	132.64	115.76	127.53	130.19	120.67	136.36	105.63	121.45	117.60	108.95
	Aug.	<b>128.18</b>	131.17	115.93	128.49	131.39	121.05	139.88	105.59	122.48	117.72	109.14
	Sep.	<b>128.82</b>	131.14	115.91	129.48	132.66	121.31	143.77	105.61	123.03	117.76	109.47
	Oct.	<b>130.03</b>	132.69	116.63	130.55	133.03	121.90	146.09	105.56	124.40	118.46	109.48
	Nov.	<b>131.02</b>	134.42	117.05	131.43	133.25	122.18	146.26	105.61	124.45	118.68	109.58
	Dec.	<b>130.66</b>	132.72	117.22	132.24	133.63	123.08	146.73	105.57	124.45	119.15	110.28
2006	Jan.	<b>132.23</b>	134.56	117.66	133.02	140.83	123.43	147.38	105.64	124.60	119.42	110.63
	Feb.	<b>132.66</b>	134.88	117.82	133.71	141.86	123.70	147.44	105.70	124.60	119.80	111.34
	Mar.	<b>132.97</b>	135.16	118.48	134.27	141.41	124.39	147.53	105.73	125.21	119.96	111.40
	Apr.	<b>134.33</b>	137.19	119.04	135.10	141.49	125.34	149.09	105.70	128.00	120.76	112.09
	May	<b>134.94</b>	137.25	119.53	135.91	142.90	126.52	150.09	105.71	128.83	122.70	112.48
	Jun.	<b>135.73</b>	138.87	119.92	136.62	142.41	127.37	150.19	105.74	128.85	121.67	113.04

Source : Federal Bureau of Statistics

## Index Number of Consumer Prices (2000 - 01=100)



## Index Numbers of Wholesale Prices (2000- 01=100)



## 8.2 Index Numbers of Wholesale Prices by Commodity Groups ( Base: 2000-01=100 )

Year/ Month	General	Food	Raw Materials	Fuel,Lighting and Lubricants	Manufactures	Building Materials
2001-02	<b>102.08</b>	102.05	100.95	103.08	101.91	101.18
2002-03	<b>107.77</b>	105.62	115.51	115.95	103.67	102.90
2003-04	<b>116.29</b>	112.99	135.12	116.23	111.83	126.46
2004-05	<b>124.14</b>	125.03	110.44	138.01	113.05	143.79
2005-06	<b>136.68</b>	133.78	121.93	174.57	115.39	144.18
2005						
Jun.	<b>129.50</b>	129.08	112.50	154.92	114.17	142.22
Jul.	<b>132.08</b>	132.75	119.03	156.56	114.88	142.56
Aug.	<b>133.45</b>	131.65	120.05	165.33	114.55	145.73
Sep.	<b>134.17</b>	131.05	114.41	172.53	114.61	146.04
Oct.	<b>135.20</b>	132.52	118.49	172.53	115.15	144.87
Nov.	<b>135.44</b>	132.91	119.33	172.53	115.16	144.99
Dec.	<b>135.26</b>	132.07	120.13	172.54	115.99	142.76
2006						
Jan.	<b>136.99</b>	133.17	124.96	177.31	116.30	140.06
Feb.	<b>138.04</b>	134.09	125.92	179.01	117.18	140.82
Mar.	<b>138.13</b>	134.26	123.97	179.54	117.36	141.25
Apr.	<b>139.83</b>	136.28	123.41	182.28	117.80	146.73
May	<b>140.32</b>	136.83	124.51	182.31	118.30	147.50
Jun.	<b>141.21</b>	137.79	128.98	182.31	118.89	146.89

Source : Federal Bureau of Statistics

### 8.3 Combined Sensitive Price Indicator (SPI) by Income Groups (Base 2000-01 =100)

Year/ Month		INCOME GROUP				Combined
		Group-I	Group-II	Group-III	Group-IV	
		Up to Rs.3000	Rs.3001 to Rs.5000	Rs.5001 to Rs.12000	Above Rs.12000	
2001-02		103.36	103.74	103.60	104.06	<b>103.60</b>
2002-03		107.06	107.77	107.66	108.49	<b>107.53</b>
2003-04		114.38	114.88	114.32	114.58	<b>113.93</b>
2004-05		127.59	127.50	127.01	127.35	<b>126.52</b>
2005-06		136.56	136.15	135.99	139.80	<b>136.43</b>
2005	Jun.	131.10	130.94	130.77	132.45	<b>130.88</b>
	Jul.	132.87	132.82	132.81	135.38	<b>133.15</b>
	Aug.	133.21	133.05	132.85	135.16	<b>132.93</b>
	Sep.	133.51	133.30	133.25	136.74	<b>133.85</b>
	Oct.	133.58	133.32	133.39	138.13	<b>134.59</b>
	Nov.	134.76	134.55	134.69	139.39	<b>135.89</b>
	Dec.	134.43	134.06	134.08	138.78	<b>135.21</b>
2006	Jan.	135.51	135.35	135.41	139.87	<b>135.82</b>
	Feb.	137.49	137.10	136.79	140.61	<b>136.71</b>
	Mar.	138.65	138.07	137.59	141.11	<b>137.54</b>
	Apr.	140.50	139.72	139.19	142.54	<b>139.21</b>
	May	141.42	140.44	139.92	143.76	<b>140.06</b>
	Jun.	142.76	141.98	141.91	146.18	<b>142.25</b>

Note: SPI figures revised as it is computed on 53 items instead of 51 items.

Source : Federal Bureau of Statistics

## 8.4 Bullion Prices

(Rupees per 10 grams)

Year / Month	GOLD TEZABI		SILVER TEZABI		
	Karachi	Lahore	Karachi	Lahore	
2001- 02	5,865	5,893	93	94	
2002-03	6,378	6,398	90	94	
2003-04	7,328	7,337	92	111	
2004-05	8,216	8,238	118	138	
2005-06	10,317	10,307	180	176	
2005	Jun.	8,496	8,485	148	141
	Jul.	8,456	8,467	165	142
	Aug.	8,589	8,593	165	144
	Sep.	8,830	8,838	165	143
	Oct.	9,158	9,189	165	145
	Nov.	9,369	9,356	165	150
	Dec.	9,968	9,946	178	160
2006	Jan.	10,888	10,524	180	168
	Feb.	10,836	10,952	180	173
	Mar.	10,856	10,852	180	182
	Apr.	11,872	11,881	180	243
	May	13,210	13,255	241	256
	Jun.	11,767	11,830	199	200

Figures are monthly / yearly averages

Source: Daily Business Recorder