

6.1 Government of Pakistan Treasury Bills

(Million Rupees)

PERIOD	3 months Government of Pakistan Treasury Bills					6 months Government of Pakistan Treasury Bills			
	Issue	Discount		Discount Paid	Outstanding Balance	Issue	Discount		Discharged
		Allowed	Discharged				Allowed	Discharged	
2001 Jun.	9,218.9	251.1	23,794.9	605.1	14,679.1	13,821.4	879.5	379.3	
Dec.	982.7	17.3	6,255.8	144.2	7,954.8	8,079.2	321.7	13,820.9	
2002 Jun.	-	-	4,934.9	65.2	11,250.2	12,943.9	407.0	8,079.2	
Dec.	495.6	4.5	-	-	495.6	12,970.3	279.7	12,943.9	
2003 Jun.	-	-	17,222.3	77.7	498.1	1,487.7	12.4	12,970.3	
Dec.	-	-	5,183.2	16.8	10,365.2	297.6	2.4	24,976.9	
2004 Jun.	-	-	20,926.6	73.4	30,356.2	-	-	297.6	
Dec.	15,113.8	136.2	17,332.4	117.6	61,089.6	-	-	-	
2005 Jun.	74,533.5	1,237.8	76,332.8	867.2	254,698.5	59,097.9	273.1	-	
Dec.	2,734.1	50.9	8,280.6	154.4	14,615.3	1,728.9	71.1	59,097.9	
2006 Jun.	1,800.8	34.2	12,109.3	225.7	2,095.3	623.8	26.2	1,728.9	
2005 Jun.	74,533.5	1,237.8	76,332.8	867.2	254,698.5	59,097.9	273.1	-	
Jul.	38,554.2	670.8	96,998.1	1,297.9	196,254.6	35,512.7	1,412.3	26,892.4	
Aug.	15,496.7	278.3	83,166.8	1,344.8	128,584.5	15,527.7	622.3	976.7	
Sep.	102,669.6	1,890.4	110,140.0	1,856.4	121,114.1	4,997.5	202.5	37,368.7	
Oct.	8,197.2	152.8	9,579.5	170.5	119,731.8	480.5	19.5	7,881.9	
Nov.	3,683.9	68.7	103,253.9	1,896.1	20,161.8	912.5	37.5	490.9	
Dec.	2,734.1	50.9	8,280.6	154.4	14,615.3	1,728.9	71.1	59,097.9	
2006 Jan.	13,767.0	256.6	8,197.2	152.8	20,185.0	2,669.6	110.3	35,512.7	
Feb.	5,988.4	111.6	3,683.9	68.7	22,489.5	480.2	19.9	15,527.7	
Mar.	13,581.8	253.2	16,304.8	303.9	19,766.5	3,872.5	160.1	4,997.5	
Apr.	98.2	1.8	3,534.1	65.9	16,330.6	96.0	4.0	480.5	
May	196.3	3.7	4,123.1	76.9	12,403.8	192.0	8.0	912.5	
Jun.	1,800.8	34.2	12,109.3	225.7	2,095.3	623.8	26.2	1,728.9	

Note : Six months Government of Pakistan Treasury Bills restarted w. e. f. June 1998 and 3 & 12 months Government of Pakistan Treasury Bills restarted w.e.f July 1998.

6.1 Government of Pakistan Treasury Bills

(Million Rupees)

PERIOD	6 months Government of Pakistan Treasury Bills		12 months Government of Pakistan Treasury Bills (Auctioned and Rollover)					
	Discount Paid	Outstanding Balance	Issue	Discount Allowed	Discharged	Discount Paid	Outstanding Balance	
2001	Jun.	20.7	40,986.1	3,367.7	432.3	-	-	48,431.8
	Dec.	879.5	42,737.7	2,869.3	241.0	206.0	23.6	59,872.5
2002	Jun.	321.7	118,439.3	1,682.6	117.4	3,367.7	432.3	78,443.8
	Dec.	407.0	192,607.3	18,829.1	820.9	2,869.3	241.0	180,325.0
2003	Jun.	279.7	148,617.6	25,403.2	596.8	1,682.6	117.4	253,908.5
	Dec.	223.1	78,346.6	392.3	7.7	18,829.1	820.9	297,695.1
2004	Jun.	2.4	78,909.1	-	-	25,403.2	596.8	236,420.9
	Dec.	-	118,457.3	-	-	196.1	3.9	91,601.7
2005	Jun.	-	132,708.3	48,360.1	1,229.2	-	-	65,798.8
	Dec.	2,335.8	59,159.9	82,036.8	7,174.7	-	-	329,870.2
2006	Jun.	71.1	7,934.1	28,686.2	2,513.8	48,360.1	4,039.9	422,647.0
2005	Jun.	-	132,708.3	48,360.1	1,229.2	-	-	65,798.8
	Jul.	557.6	141,328.7	62,892.7	5,332.3	535.6	14.4	128,155.9
	Aug.	23.4	155,879.7	37,909.2	3,290.8	534.9	15.1	165,530.2
	Sep.	1,001.3	123,508.6	15,722.5	1,377.7	6,798.7	201.3	174,454.0
	Oct.	278.1	116,107.2	14,069.5	1,230.5	192.6	7.4	188,330.9
	Nov.	19.1	116,528.8	59,676.1	5,218.9	287.3	12.7	247,719.7
	Dec.	2,335.8	59,159.9	82,150.5	7,184.7	-	-	329,870.2
2006	Jan.	1,412.3	26,316.7	39,647.9	3,468.4	1,239.4	60.6	368,278.7
	Feb.	622.3	11,269.1	13,561.8	1,188.3	94.8	5.2	381,745.6
	Mar.	202.5	10,144.2	53,022.2	4,646.4	2,968.7	169.4	431,799.2
	Apr.	19.5	9,759.7	13,929.3	1,220.7	1,774.3	125.7	443,954.1
	May	37.5	9,039.2	1,379.1	120.9	3,012.3	237.7	442,320.9
	Jun.	71.1	7,934.1	28,686.2	2,513.8	48,360.1	4,039.9	422,647.0

6.2 Sale / Purchase of Treasury Bills Under Open Market Operation by SBP with Banks

SALE												(Billion Rupees)
PERIOD	2001-02		2002-03		2003-04		2004-05		2005-06			
	Bid Amount		Bid Amount		Bid Amount		Bid Amount		Bid Amount			
	Offered	Accepted	Offered	Accepted	Offered	Accepted	Offered	Accepted	Offered	Accepted		
July	33.2	22.1	16.8	12.0	72.1	41.5	74.3	71.5	56.5	46.8		
August	10.7	7.5	-	-	19.5	8.0	66.9	57.9	86.0	65.2		
September	5.8	4.0	30.1	16.9	101.8	76.0	13.2	4.0	83.9	69.7		
October	-	-	-	-	29.9	13.0	61.8	52.6	14.0	9.0		
November	-	-	27.4	13.0	-	-	59.9	42.4	32.0	26.5		
December	-	-	-	-	32.5	29.5	103.2	95.2	159.2	95.9		
January	39.5	17.6	-	-	62.7	54.5	15.4	6.5	82.5	67.1		
February	6.4	5.2	-	-	26.6	22.0	60.8	56.6	80.5	64.7		
March	-	-	-	-	26.9	16.6	83.7	60.8	44.5	41.1		
April	-	-	-	-	27.3	24.0	90.9	49.6	-	-		
May	-	-	-	-	16.0	4.9	73.1	49.2	6.6	4.0		
June	-	-	53.2	25.0	145.2	120.9	95.5	64.9	235.4	153.8		
Average												
per month	8.0	4.7	10.6	5.6	46.7	34.2	66.5	50.9	73.4	53.6		
per day	0.2	0.2	0.4	0.2	1.6	1.1	2.2	1.7	2.5	1.8		

PURCHASE

PERIOD	Amount		Amount		Amount		Amount		Amount		
	Offered	Injected	Offered	Injected	Offered	Injected	Offered	Injected	Offered	Injected	
	July	9.1	1.1	81.4	51.7	-	-	-	-	-	-
August	20.0	10.6	-	-	-	-	-	-	11.15	8.3	
September	80.1	49.3	-	-	-	-	-	-	-	-	
October	82.2	50.1	-	-	7.8	3.5	16.1	14.0	66.9	38.5	
November	38.7	16.2	-	-	85.9	56.7	-	-	123.6	74.1	
December	21.1	11.1	-	-	29.3	16.5	-	-	-	-	
January	0.6	-	-	-	-	-	40.3	21.3	139.6	111.5	
February	44.2	23.9	-	-	-	-	-	-	60.6	42.8	
March	-	-	-	-	-	-	-	-	12.7	10.7	
April	13.4	7.0	-	-	-	-	-	-	210.5	96.9	
May	49.6	35.3	6.1	3.1	-	-	20.0	9.0	91.4	46.7	
June	40.9	36.9	-	-	-	-	-	-	-	-	
Average											
per month	33.3	20.1	7.3	4.6	10.2	6.4	6.4	3.7	59.7	35.8	
per day	1.1	0.7	0.2	0.2	0.3	0.2	0.2	0.1	2.0	1.2	

Source: Exchange and Debt Management Department, SBP

6.3 SBP 3-Day Repo Facility MTBs / FIBs / PIBs (Outstanding)

Cash Accommodation

(Million Rupees)

PERIOD	2000-01	2001-02	2002-03	2003-04	2004-05	2005-06
July	29,776	75,176	94,168	-	700	23,861
August	44,034	38,835	9,490	-	10,600	48,241
September	64,924	47,412	87,535	-	84,760	45,245
October	438,180	107,366	214,984	10,440	63,324	116,512
November	282,664	211,461	103,241	400	14,098	91,780
December	138,921	17,261	29,775	-	-	4,520
January	309,448	17,355	140,540	1,350	115,134	29,760
February	16,186	101,956	2,500	8,340	-	12,032
March	33,853	10,368	-	-	21,695	47,815
April	114,117	45,803	6,625	24,745	800	243,238
May	41,060	130,386	-	1,245	70,787	55,246
June	43,528	24,972	-	-	139,550	44,019
Average						
per month	129,724	69,029	57,405	3,877	43,454	63,522
per day	4,3,24	2,301	1,913	129	1,448	2,117

SBP 3-Day Repo Rates

(Percent per annum)

July	11.00	13.00	9.00	7.50	7.50	9.00
August	11.00	12.00	9.00	7.50	7.50	9.00
September	12.00	12.00	9.00	7.50	7.50	9.00
October	13.00	10.00	9.00	7.50	7.50	9.00
November	13.00	10.00	7.50	7.50	7.50	9.00
December	13.00	10.00	7.50	7.50	7.50	9.00
January	13.00	9.00	7.50	7.50	7.50	9.00
February	14.00	9.00	7.50	7.50	7.50	9.00
March	14.00	9.00	7.50	7.50	7.50	9.00
April	14.00	9.00	7.50	7.50	9.00	9.00
May	14.00	9.00	7.50	7.50	9.00	9.00
June	14.00	9.00	7.50	7.50	9.00	9.00

Note: Rates applicable against T-bills & FIBs, PIBs

Source: Exchange and Debt Management Department, SBP

6.4 Auction of Government of Pakistan Market Treasury Bills (Auction Wise)

(Million Rupees)

AUCTION SETTLEMENT DATE	3 Months Treasury Bills				6 Months Treasury Bills	
	Amount Offered	Amount Accepted	Cutt-off Yield (%)	Weighted Average (%)	Amount Offered	Amount Accepted
2004-05						
09-06-05	84,250	73,275	7.5147	7.3801	33,501	23,326
23-06-05	8,150	2,525	7.5147	7.4790	50,283	38,108
2005-06						
07-07-05	42,150	36,225	7.6946	7.5489	42,800	34,675
21-07-05	13,150	3,000	7.6946	7.6946	7,275	2,250
04-08-05	19,800	6,750	7.8297	7.7488	26,875	13,375
19-08-05	27,175	9,025	7.9197	7.8436	13,075	2,775
01-09-05	101,375	96,125	8.1000	7.9919	16,075	4,550
15-09-05	29,500	5,300	8.1000	8.1000	7,750	500
29-09-05	30,935	3,135	8.1000	8.1000	3,950	150
13-10-05	9,150	3,450	8.1000	8.1000	3,400	250
27-10-05	10,800	4,900	8.1000	8.0954	2,300	250
10-11-05	1,403	353	8.1000	8.1000	900	150
24-11-05	8,600	3,400	8.1000	8.1000	4,600	800
8-12-05	1,758	Rejected	Rejected	Rejected	9,700	Rejected
22-12-05	9,685	2,785	8.1000	8.0895	13,850	1,800
05-01-06	19,600	13,800	8.1000	8.1000	4,300	1,300
19-01-06	1,500	200	8.1000	8.1000	3,450	600
02-02-06	13,550	3,400	8.1000	8.1000	3,800	500
16-02-06	8,200	2,700	8.1000	8.1000	3,850	Rejected
02-03-06	14,000	1,500	8.1000	8.1000	2,258	508
16-03-06	14,985	9,235	8.1000	8.1000	3,500	3,000
30-03-06	4,800	3,100	8.1000	8.1000	1,800	500
13-04-06	300	100	8.1000	8.1000	800	100
27-04-06	No Bid	No Bid	No Bid	No Bid	No Bid	No Bid
11-05-06	1,100	100	8.1000	8.1000	100	100
25-05-06	600	100	8.1000	8.1000	100	100
08-06-06	2,535	1,535	8.3256	8.2469	600	600
22-06-06	2,500	300	8.3256	8.3256	4,100	50

6.4 Auction of Government of Pakistan Market Treasury Bills (Auction Wise)

(Million Rupees)

AUCTION SETTLEMENT DATE	6 Months Treasury Bills		12 Months Treasury Bills			
	Cutt-off Yield (%)	Weighted Average (%)	Amount Offered	Amount Accepted	Cutt-off Yield (%)	Weighted Average (%)
2004-05						
09-06-05	7.9869	7.8970	16,450	12,000	8.4477	8.2952
23-06-05	7.9869	7.9564	57,800	40,400	8.4477	8.4009
2005-06						
07-07-05	7.9869	7.9761	58,100	54,825	8.6959	8.4561
21-07-05	7.9869	7.9677	24,642	13,400	8.6959	8.6884
04-08-05	8.0954	8.0231	45,100	38,350	8.7907	8.6986
19-08-05	8.1388	8.1056	11,800	2,850	8.7907	8.7865
01-09-05	8.1388	8.1245	13,800	7,750	8.7907	8.7830
15-09-05	8.1388	8.1388	6,800	3,900	8.7907	8.7907
29-09-05	8.1388	8.1388	9,300	5,450	8.7907	8.7896
13-10-05	8.1388	8.1388	4,300	700	8.7907	8.7907
27-10-05	8.1388	8.1388	14,900	14,600	8.7907	8.7687
10-11-05	8.1388	8.1388	18,650	7,150	8.7784	8.7674
24-11-05	8.2910	8.2583	65,045	57,745	8.7907	8.7666
8-12-05	Rejected	Rejected	25,500	19,600	8.7907	8.7874
22-12-05	8.2910	8.2451	72,012	69,612	8.7907	8.7648
05-01-06	8.2910	8.2742	38,125	34,725	8.7907	8.7768
19-01-06	8.2910	8.2910	9,795	8,345	8.7907	8.7523
02-02-06	8.2910	8.2910	13,050	11,250	8.7907	8.7843
16-02-06	Rejected	Rejected	5,800	3,500	8.7907	8.7907
02-03-06	8.2910	8.2910	6,850	6,000	8.7907	8.7808
16-03-06	8.2910	8.2910	16,300	14,200	8.7907	8.7832
30-03-06	8.2910	8.2910	38,915	36,915	8.7907	8.7897
13-04-06	8.2910	8.2910	16,050	14,650	8.7907	8.7878
27-04-06	No Bid	No Bid	600	500	8.7907	8.7907
11-05-06	8.2889	8.2889	1,200	500	8.7907	8.7907
25-05-06	8.2910	8.2910	1,500	1,000	8.7907	8.7907
08-06-06	8.4433	8.4179	28,600	25,700	8.7907	8.7863
22-06-06	8.4869	8.4869	8,300	5,500	8.7907	8.7907

Source: Exchange and Debt Management Department ,SBP

6.5 Auction of Pakistan Investment Bonds (PIBs)

(Million Rupees)

AUCTION SETTLEMENT DATE	Tenure	Coupon Rate (%)	Amount Offered	Amount Accepted	Price Accepted = Rs.100	Cut-off Yield Accepted (%)	Weighted Average Yield Accepted (%)
29-05-04	3-Years	6.00	2,969.00	1,869.00	104.47	4.3506	4.2354
	5-Years	7.00	4,434.00	3,134.00	107.05	5.3492	5.2699
	10-Years	8.00	10,460.80	10,060.80	104.37	7.3698	7.1268
09-06-04	15-Years	9.00	8,410.90	3,665.90	100.01	8.9988	8.9935
	20-Years	10.00	10,536.00	3,566.00	100.05	9.9942	9.9927
2004-05							
18-08-04	3-Years	6.00	1,750.00	50.00	101.64	5.4005	5.4005
	5-Years	7.00	1,403.00	226.50	100.84	6.7990	6.3309
	10-Years	8.00	1,600.00	150.00	100.00	8.0000	7.9297
12-11-04	3-Years	6.00	350.00	-	-	-	-
	5-Years	7.00	800.00	150.00	101.05	6.7491	6.6994
	10-Years	8.00	875.00	50.00	100.54	7.9208	7.9208
28-03-05	3-Years	6.00	300.00	50.00	99.06	6.3500	6.3500
	5-Years	7.00	400.00	50.00	97.95	7.5000	7.5000
	10-Years	8.00	438.00	44.00	99.32	8.1000	8.1000
19-05-06	3-Years	9.10	3,896.20	3,205.20	99.10	9.4515	9.3887
	5-Years	9.30	6,526.20	4,608.14	98.57	9.6674	9.6461
	10-Years	9.60	5,590.00	3,424.05	98.28	9.8746	9.8454

Source: Exchange and Debt Management Department, SBP

6.6 Monthly KIBOR

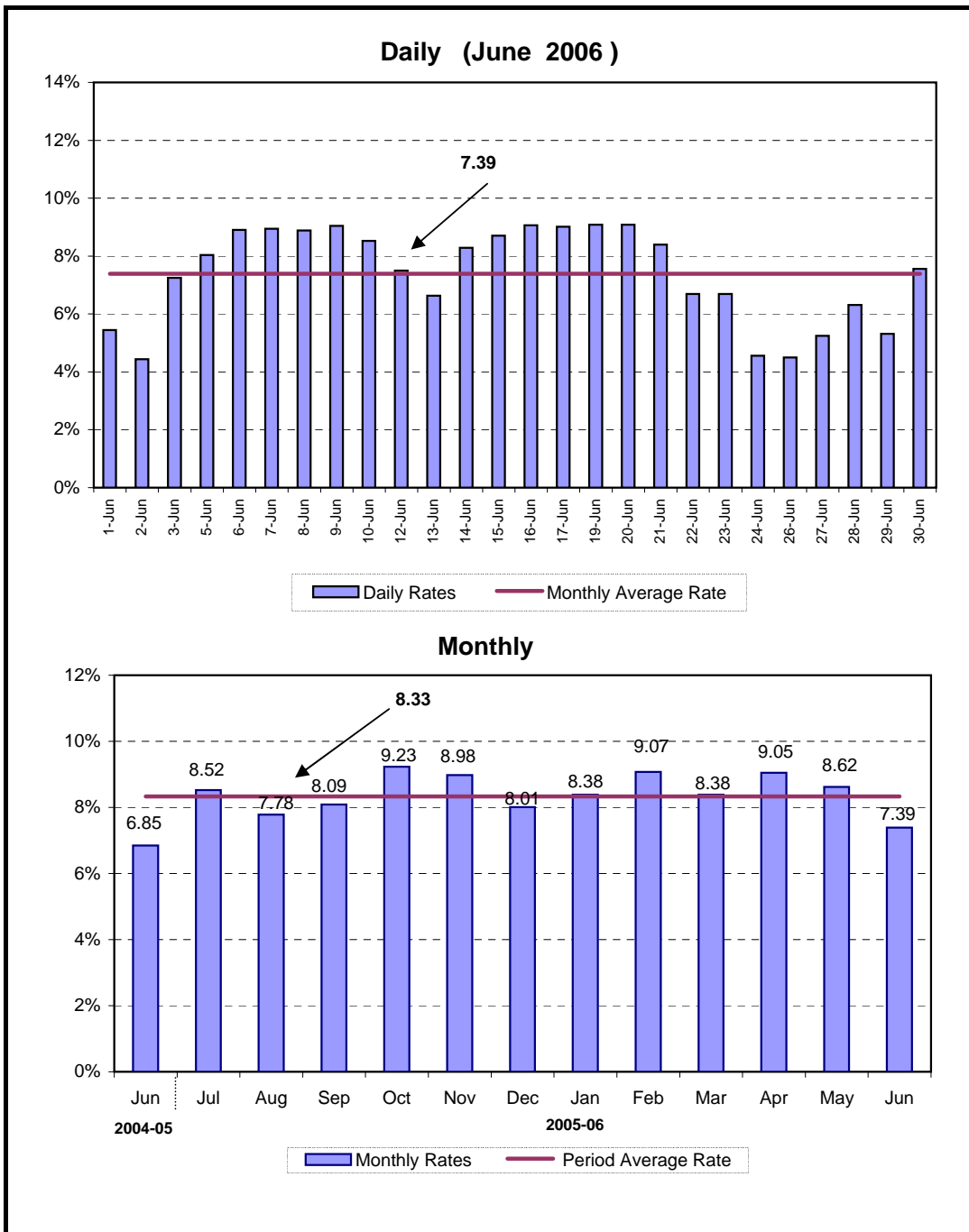
(Percent per annum)

Period	1 Week		2 Week		1Month		3 Month		6 Month		9 Month		12 Month		
	Bid	Offer	Bid	Offer	Bid	Offer	Bid	Offer	Bid	Offer	Bid	Offer	Bid	Offer	
2005 Jun.	Month Average	6.02	6.99	6.58	7.06	6.93	7.41	7.36	7.84	7.88	8.36	8.25	8.73	8.64	9.12
	End-Month	8.21	9.21	7.93	8.43	7.71	8.21	7.75	8.25	8.21	8.71	8.48	8.98	8.83	9.33
Jul.	Month Average	7.60	8.60	7.72	8.22	7.80	8.30	8.02	8.52	8.40	8.90	8.64	9.14	8.93	9.43
	End-Month	8.08	9.08	8.10	8.60	8.14	8.64	8.26	8.76	8.60	9.10	8.80	9.30	9.05	9.55
Aug.	Month Average	7.35	8.35	7.57	8.07	7.73	8.23	8.07	8.57	8.43	8.93	8.72	9.22	9.03	9.53
	End-Month	7.42	8.42	7.53	8.03	7.65	8.15	8.04	8.54	8.37	8.87	8.69	9.19	9.04	9.54
Sep.	Month Average	7.53	8.53	7.74	8.24	7.85	8.35	8.07	8.57	8.40	8.90	8.71	9.21	9.02	9.52
	End-Month	7.29	8.29	7.64	8.14	7.89	8.39	8.08	8.58	8.44	8.94	8.71	9.21	9.01	9.51
Oct.	Month Average	8.04	9.04	8.15	8.65	8.18	8.68	8.30	8.80	8.53	9.03	8.75	9.25	9.06	9.56
	End-Month	8.35	9.35	8.41	8.91	8.40	8.90	8.45	8.95	8.60	9.10	8.78	9.28	9.10	9.60
Nov.	Month Average	8.13	9.13	8.27	8.77	8.33	8.83	8.48	8.98	8.63	9.13	8.82	9.32	9.09	9.59
	End-Month	8.25	9.25	8.35	8.85	8.36	8.86	8.55	9.05	8.69	9.19	8.87	9.37	9.10	9.60
Dec.	Month Average	7.51	8.51	7.85	8.35	8.14	8.64	8.40	8.90	8.64	9.14	8.88	9.38	9.11	9.61
	End-Month	7.39	8.39	7.70	8.20	7.92	8.42	8.26	8.76	8.55	9.05	8.85	9.35	9.08	9.58
2006 Jan.	Month Average	7.84	8.84	8.07	8.57	8.19	8.69	8.38	8.88	8.63	9.13	8.87	9.37	9.11	9.61
	End-Month	7.93	8.93	8.14	8.64	8.26	8.76	8.48	8.98	8.73	9.23	8.91	9.41	9.13	9.63
Feb.	Month Average	7.92	8.92	8.11	8.61	8.24	8.74	8.50	9.00	8.75	9.25	8.94	9.44	9.17	9.67
	End-Month	7.97	8.97	8.09	8.59	8.21	8.71	8.58	9.08	8.89	9.39	9.05	9.55	9.28	9.78
Mar.	Month Average	7.85	8.85	8.07	8.57	8.19	8.69	8.52	9.02	8.84	9.34	9.06	9.56	9.25	9.75
	End-Month	8.22	9.22	8.31	8.81	8.34	8.84	8.63	9.13	8.93	9.43	9.11	9.61	9.29	9.79
Apr.	Month Average	8.46	9.46	8.54	9.04	8.55	9.05	8.73	9.23	8.98	9.48	9.17	9.67	9.35	9.85
	End-Month	8.71	9.71	8.74	9.24	8.76	9.26	8.87	9.37	9.10	9.60	9.25	9.75	9.45	9.95
May.	Month Average	8.52	9.52	8.64	9.14	8.71	9.21	8.89	9.39	9.17	9.67	9.33	9.83	9.55	10.05
	End-Month	8.36	9.36	8.48	8.98	8.56	9.06	8.82	9.32	9.16	9.66	9.35	9.85	9.55	10.05
Jun.	Month Average	7.93	8.93	8.21	8.71	8.37	8.87	8.76	9.26	9.18	9.68	9.40	9.90	9.58	10.08
	End-Month	7.01	8.01	7.75	8.25	8.12	8.62	8.70	9.20	9.11	9.61	9.35	9.85	9.56	10.06

KIBOR :Karachi Interbank Offered Rate

Source: Exchange & Debt Management Department,SBP

Call Money Rate



6.7 Call Money Rate

(Percent per annum)						
MONTH	2000-01	2001-02	2002-03	2003-04	2004-05	2005-06
July	5.63	6.94	5.59	0.74	1.90	8.52
August	7.63	8.30	5.32	1.40	3.03	7.78
September	6.82	9.19	7.30	1.01	5.51	8.09
October	12.30	10.41	7.96	2.34	3.40	9.23
November	12.93	9.36	4.90	2.67	4.04	8.98
December	10.54	6.09	4.61	2.43	2.79	8.01
January	9.12	3.61	4.12	1.72	6.53	8.38
February	6.63	5.48	2.36	2.57	2.67	9.07
March	6.71	4.75	1.14	0.99	5.02	8.38
April	10.53	5.66	2.71	3.38	3.95	9.05
May	9.36	6.31	3.83	1.65	6.37	8.62
June	9.28	4.83	0.92	1.46	6.85	7.39
Average of the period	8.96	6.74	4.23	1.86	4.34	8.46

Source: Daily Business Recorder

6.8 SBP Rates for Market to Market (M 2 M) of Major Currencies

MONTH	US Dollar			Euro			Japanese Yen			Pound Sterling		
	Ready	Week	1Month	Ready	Week	1Month	Ready	Week	1Month	Ready	Week	1 Month
1-Jun-06	60.1460	60.1615	60.2640	76.8997	76.9561	77.1979	0.5329	0.5336	0.5362	112.2054	112.2449	112.4770
2-Jun-06	60.1450	60.1620	60.2440	77.0728	77.1313	77.3474	0.5330	0.5336	0.5361	112.1674	112.2097	112.4037
3-Jun-06	60.1185	60.1425	60.2235	77.6881	77.7563	77.9718	0.5386	0.5393	0.5418	113.2031	113.2589	113.4505
5-Jun-06	60.1355	60.1668	60.2605	77.9506	78.0288	78.2605	0.5382	0.5390	0.5416	113.3885	113.4580	113.6741
6-Jun-06	60.1100	60.1469	60.2455	77.5629	77.6478	77.8961	0.5356	0.5364	0.5392	112.5409	112.6207	112.8501
7-Jun-06	60.0935	60.1333	60.2345	77.0399	77.1284	77.3732	0.5307	0.5316	0.5342	111.7979	111.8824	112.1151
8-Jun-06	60.1180	60.1558	60.2595	76.7737	76.8566	77.1010	0.5281	0.5290	0.5316	111.1612	111.2416	111.4778
9-Jun-06	60.1560	60.1980	60.3000	76.1876	76.2747	76.5178	0.5281	0.5289	0.5315	110.8886	110.9764	111.2080
10-Jun-06	60.1790	60.2193	60.3220	76.0723	76.1572	76.4011	0.5279	0.5287	0.5314	110.7564	110.8411	111.0742
12-Jun-06	60.1670	60.2038	60.3100	75.8826	75.9621	76.2097	0.5263	0.5271	0.5298	110.8998	110.9780	111.2192
13-Jun-06	60.1420	60.1770	60.2830	75.6466	75.7226	75.9799	0.5255	0.5263	0.5292	110.7846	110.8598	111.1055
14-Jun-06	60.1470	60.1840	60.2905	75.6649	75.7436	75.9966	0.5232	0.5241	0.5269	110.7938	110.8726	111.1175
15-Jun-06	60.1830	60.2253	60.3510	75.9088	75.9950	76.2706	0.5236	0.5245	0.5273	111.0707	111.1599	111.4433
16-Jun-06	60.2100	60.2508	60.3680	76.2560	76.3406	76.6078	0.5242	0.5250	0.5278	111.5842	111.6714	111.9409
17-Jun-06	60.2030	60.2425	60.3560	76.1177	76.2005	76.4627	0.5228	0.5237	0.5264	111.3966	111.4814	111.7434
19-Jun-06	60.2600	60.2980	60.4105	75.8824	75.9634	76.2235	0.5209	0.5217	0.5244	111.1255	111.2075	111.4675
20-Jun-06	60.2570	60.2958	60.4065	75.7280	75.8105	76.0781	0.5238	0.5247	0.5275	111.0205	111.1050	111.3663
21-Jun-06	60.2710	60.3018	60.3960	76.1705	76.2436	76.4866	0.5256	0.5264	0.5290	111.1849	111.2553	111.4853
22-Jun-06	60.2600	60.2870	60.3880	76.1144	76.1845	76.4306	0.5230	0.5238	0.5264	110.8031	110.8681	111.1070
23-Jun-06	60.2100	60.2393	60.3390	75.5876	75.6655	75.9033	0.5179	0.5187	0.5212	109.8622	109.9340	110.1664
24-Jun-06	60.2060	60.2358	60.3370	75.3027	75.3807	75.6198	0.5164	0.5173	0.5198	109.4274	109.4999	109.7349
26-Jun-06	60.2110	60.2330	60.3285	75.5498	75.6135	75.8509	0.5170	0.5177	0.5202	109.5509	109.6074	109.8339
27-Jun-06	60.2115	60.2400	60.3365	75.7521	75.8244	76.0732	0.5175	0.5182	0.5209	109.6993	109.7680	110.0017
28-Jun-06	60.1945	60.2280	60.3270	75.6314	75.7100	75.9568	0.5173	0.5181	0.5207	109.4547	109.5324	109.7671
29-Jun-06	60.2090	60.2295	60.3290	75.4810	75.5430	75.7911	0.5171	0.5178	0.5204	109.2823	109.3354	109.5717
30-Jun-06	60.2150	60.2448	60.3440	76.5574	76.6324	76.8924	0.5253	0.5261	0.5289	110.3952	110.4655	110.7079

6.8 SBP Rates for Market to Market (M 2 M) of Major Currencies

MONTH	Swiss Frank			Australian Dollar			Saudi Arabian Riyal			Kuwaiti Dinnar		
	Ready	Week	1 Month	Ready	Week	1 Month	Ready	Week	1 Month	Ready	Week	1 Month
1-Jun-06	49.2334	49.2828	49.4860	45.0403	45.0453	45.1057	16.0359	16.0418	16.0747	207.9629	208.0111	208.3457
2-Jun-06	49.2770	49.3278	49.5145	44.9464	44.9531	44.9973	16.0363	16.0427	16.0700	207.9667	208.0147	208.2622
3-Jun-06	49.7855	49.8425	50.0297	45.1911	45.2032	45.2468	16.0288	16.0371	16.0645	207.9002	207.9724	208.2165
5-Jun-06	49.9921	50.0557	50.2544	45.2008	45.2185	45.2713	16.0336	16.0436	16.0748	207.9338	208.0313	208.3300
6-Jun-06	49.7950	49.8627	50.0759	44.8451	44.8669	44.9227	16.0266	16.0381	16.0695	207.8456	207.9660	208.2710
7-Jun-06	49.3642	49.4334	49.6415	44.5954	44.6194	44.6777	16.0228	16.0351	16.0672	207.8102	207.9262	208.2329
8-Jun-06	49.1582	49.2255	49.4296	44.8270	44.8492	44.9110	16.0295	16.0413	16.0746	207.9200	208.0292	208.3446
9-Jun-06	48.8795	48.9500	49.1515	44.8854	44.9106	44.9713	16.0384	16.0513	16.0836	208.0587	208.1823	208.4918
10-Jun-06	48.8803	48.9496	49.1518	45.0169	45.0410	45.1022	16.0450	16.0573	16.0904	208.1310	208.2524	208.5535
12-Jun-06	48.8230	48.8890	49.0948	45.0320	45.0533	45.1173	16.0454	16.0568	16.0912	208.1111	208.2344	208.5697
13-Jun-06	48.7216	48.7866	49.0022	44.5833	44.6030	44.6652	16.0387	16.0497	16.0836	207.9743	208.0845	208.4186
14-Jun-06	48.7909	48.8578	49.0693	44.4937	44.5151	44.5786	16.0373	16.0488	16.0828	207.9880	208.1051	208.4409
15-Jun-06	48.8578	48.9275	49.1516	44.5083	44.5338	44.6136	16.0464	16.0592	16.0983	208.1053	208.2407	208.6501
16-Jun-06	49.0270	49.0957	49.3138	44.7571	44.7816	44.8558	16.0532	16.0657	16.1024	208.2310	208.3613	208.7414
17-Jun-06	48.9316	48.9993	49.2142	44.4388	44.4622	44.5332	16.0509	16.0630	16.0992	208.1996	208.3254	208.6854
19-Jun-06	48.7048	48.7708	48.9838	44.4568	44.4793	44.5495	16.0672	16.0789	16.1148	208.3679	208.4885	208.8522
20-Jun-06	48.5689	48.6355	48.8570	44.5209	44.5443	44.6125	16.0666	16.0786	16.1144	208.3575	208.4845	208.8456
21-Jun-06	48.8380	48.8987	49.1026	44.4740	44.4918	44.5484	16.0731	16.0831	16.1140	208.4060	208.5124	208.8310
22-Jun-06	48.6753	48.7339	48.9372	44.5111	44.5271	44.5889	16.0702	16.0792	16.1123	208.3895	208.4829	208.8322
23-Jun-06	48.3285	48.3940	48.5894	44.0828	44.1003	44.1608	16.0528	16.0624	16.0947	208.2166	208.3179	208.6627
24-Jun-06	48.2072	48.2732	48.4697	44.1220	44.1398	44.2011	16.0522	16.0619	16.0950	208.1956	208.2986	208.6486
26-Jun-06	48.3254	48.3799	48.5778	43.9992	44.0120	44.0689	16.0531	16.0608	16.0919	208.2129	208.3070	208.6553
27-Jun-06	48.3724	48.4326	48.6415	44.1681	44.1858	44.2427	16.0540	16.0636	16.0953	208.1822	208.2988	208.6505
28-Jun-06	48.3626	48.4269	48.6332	43.9269	43.9476	44.0068	16.0527	16.0636	16.0956	208.1486	208.2681	208.6212
29-Jun-06	48.2695	48.3228	48.5290	43.9134	43.9242	43.9832	16.0542	16.0614	16.0933	208.2204	208.2949	208.6498
30-Jun-06	48.8441	48.9060	49.1247	44.7849	44.8028	44.8603	16.0546	16.0641	16.0965	208.2411	208.3262	208.6584

Source: Exchange and Debt Management Department, SBP