

## 14 Other Services Activities

### Performance at a Glance

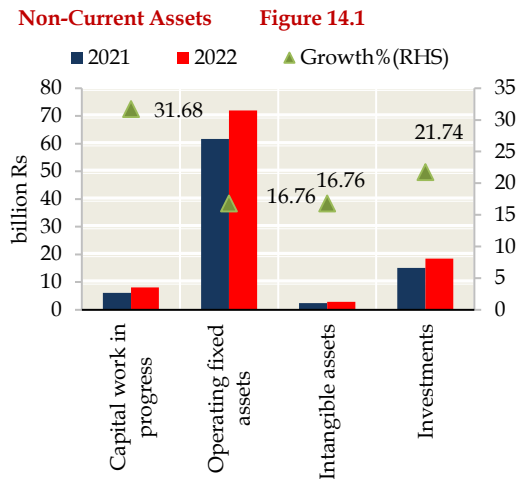
The balance sheet size of other services activities sector increased by Rs 18.89 billion to Rs 157.88 billion during 2022, showing a growth of 13.59 percent. While the shareholders' equity improved by 14.88 percent during 2022, reaching Rs 95.53 billion, the liabilities increased by 11.66 percent, to Rs 62.34 billion. The sales of the sector showed a YoY growth of 49.51 percent, reaching Rs 41.53 billion during 2022. The profit after taxation increased YoY by Rs 1.11 billion. The performance indicators like return on assets (ROA) and return on equity (ROE) improved during 2022 as shown in **Table 14.1**.

Sector's Summary (billion Rs)		Table 14.1	
Items	2022	2021	Growth (%)
<b>Assets</b>	<b>157.88</b>	<b>138.99</b>	<b>13.59</b>
Non-Current	103.86	87.93	18.12
Current	54.01	51.06	5.79
<b>Liabilities</b>	<b>157.88</b>	<b>138.99</b>	<b>13.59</b>
Non-Current	26.05	23.38	11.43
Current	36.29	32.45	11.83
<b>Equity</b>	<b>95.53</b>	<b>83.16</b>	<b>14.88</b>
<i>of which</i>			
Paid up Capital	13.21	12.48	5.87
Reserves	18.63	17.43	6.89
<b>Sales</b>	<b>41.53</b>	<b>27.78</b>	<b>49.51</b>
<b>Gross Profit</b>	<b>11.5</b>	<b>6.2</b>	<b>85.53</b>
<b>Profit after tax</b>	<b>1.53</b>	<b>0.42</b>	<b>268.63</b>
<b>ROA (%)</b>	<b>1.03</b>	<b>0.3</b>	<b>-</b>
<b>ROE (%)</b>	<b>1.72</b>	<b>0.51</b>	<b>-</b>

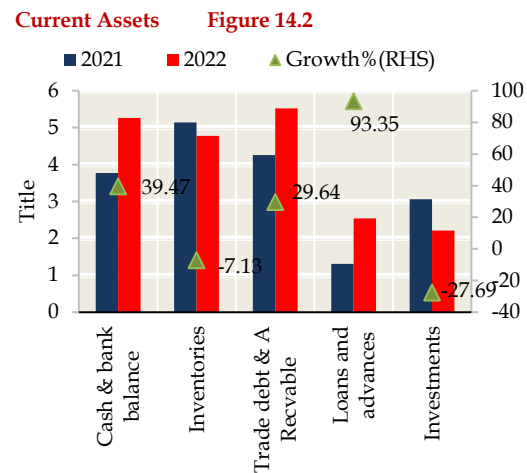
### Assets

The breakup of assets accumulation (Rs 18.89 billion) reveals that major increase was in the form of non-current assets, which increased by Rs 15.93 billion (18.12 percent) during 2022. A further analysis shows that operating fixed assets (after deducting accumulated depreciation) has the largest contribution (Rs 10.34 billion) in the rise of non-current assets during 2022, followed by long term investment

(Rs 3.29 billion).



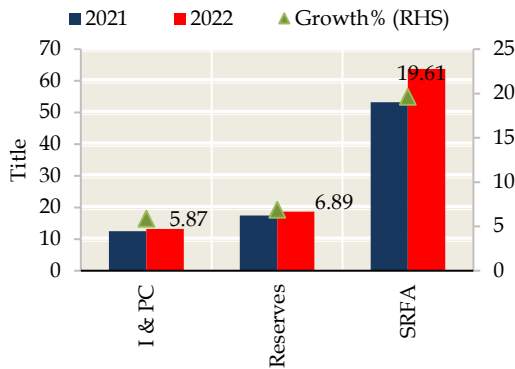
The current assets of the sector augmented to Rs 54.01 billion in 2022 from Rs 51.06 billion in 2021, reflecting a growth of 5.79 percent.



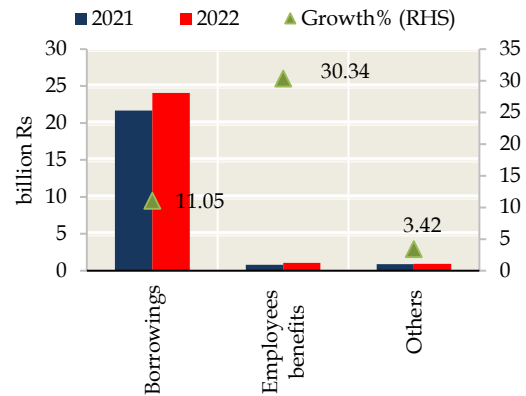
### Shareholders' Equity & Liabilities

The shareholders' equity of the sector increased by Rs 12.37 billion during 2022, reaching Rs 95.53 billion. Major contributor in this increase was surplus on revaluation of fixed assets, which rose by Rs 10.44 billion, followed by revenue reserves (Rs 1.66 billion) and issued, subscribed & paid-up capital (Rs 0.73 billion).

**Shareholders' Equity Figure 14.3**



**Non-Current Liabilities Figure 14.5**

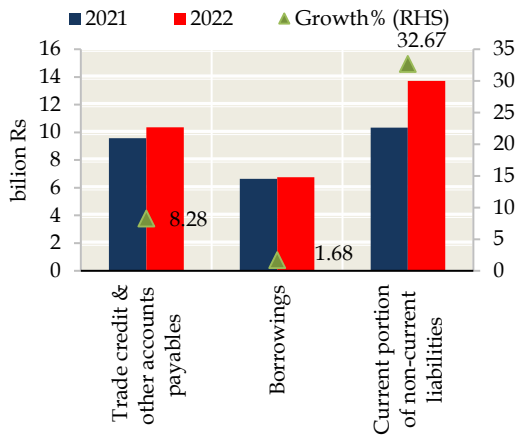


Total liabilities of sector increased by Rs 6.51 billion (11.66 percent), mainly in the form of current liabilities (which comprises the 58.00 percent of total liabilities). Specifically, the current liabilities increased from Rs 32.45 billion to Rs 36.29 billion during 2022. Major contributor was current portion of non-current liabilities, which increased by Rs 3.38 billion.

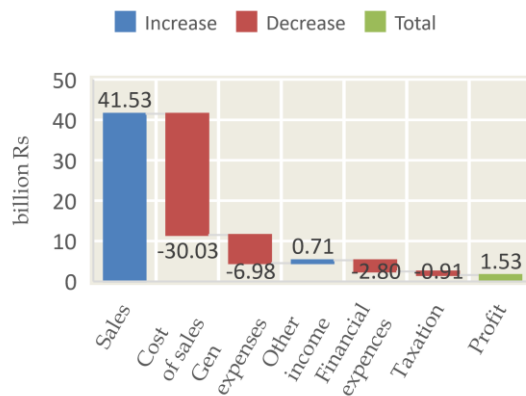
### Operating Efficiency & Ratio Analysis

Sales of the sector witnessed a YoY increase of Rs 13.75 billion, reaching Rs 41.534 billion during 2022. The gross profit registered a YoY growth of 85.53 percent (Rs 11.5 billion). A YoY increase of Rs 1.12 billion (268.63 percent) was recorded in profit after taxation which was recorded at Rs 1.53 billion in 2022.

**Current Liabilities Figure 14.4**



**Operating Efficiency Figure 14.6**



The non-current liabilities of the sector increased by Rs 2.67 billion, reaching Rs 26.05 billion in 2022, out of which long-term borrowings recorded an increase of Rs 2.39 billion.

The return on assets (ROA) declined to 0.3 percent, which was 1.03 percent in 2021. Similarly, the return on equity (ROE) fell to 0.51 percent, which was 1.72 percent in 2021.