

## SUMMARY

Table 1(a) : Monthly Import of Goods &amp; Services

(Million US\$)

Items	September	
	2011	2010
I. Import Payments (Banks)	3,474	2,519
II. Freight & Insurance	208	201
III. Other Import unaccounted by Banks	82	40
Unclassified Imports	25	10
Imports NRI, Sale of Duty Free Shops	19	4
Imports under Foreign Economic Assistance	22	20
Land borne Imports with Afghanistan	13	9
PIA & PNSC	13	3
Capital Equipment	0	0
Cost of Imports (Ex. Cos.)	0	0
Refund & Rebate	-9	-7
Import from EPZ	0	0
<b>(A) Import General Merchandise (I-II+III)</b>	<b>3,347</b>	<b>2,357</b>
<b>(B) Other Import under BPM5*</b>	<b>34</b>	<b>24</b>
<b>(C) Import of Goods (A+B)</b>	<b>3,381</b>	<b>2,381</b>
<b>(D) Import of Services</b>	<b>678</b>	<b>588</b>
<b>(E) Import of Goods &amp; Services (C+D)</b>	<b>4,059</b>	<b>2,969</b>

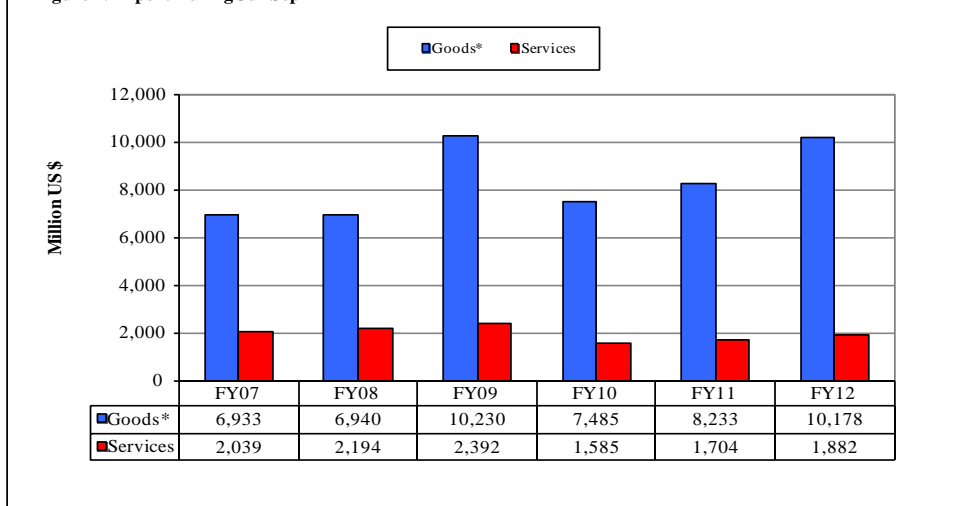
\* See "Introduction" for details:

Table 1(b) : Key Indicators of Import of Goods and Services

(Million US\$)

September 2011	4,059
August 2011	4,219
% Change during September 2011 over August 2011	-3.8
September 2010	2,969
% Change during September 2011 over September 2010	36.7
July-September 2011-12	12,059
July-September 2010-11	9,937
% Change during July-September 2011-12 over July-September 2010-11	21.4
Monthly average during July-September 2011-12	4,020
Monthly average during July-September 2010-11	3,312
FY11	43,347
FY10	38,128
% Change during FY11 over FY10	13.7
Monthly average during FY11	3,612
Monthly average during FY10	3,177

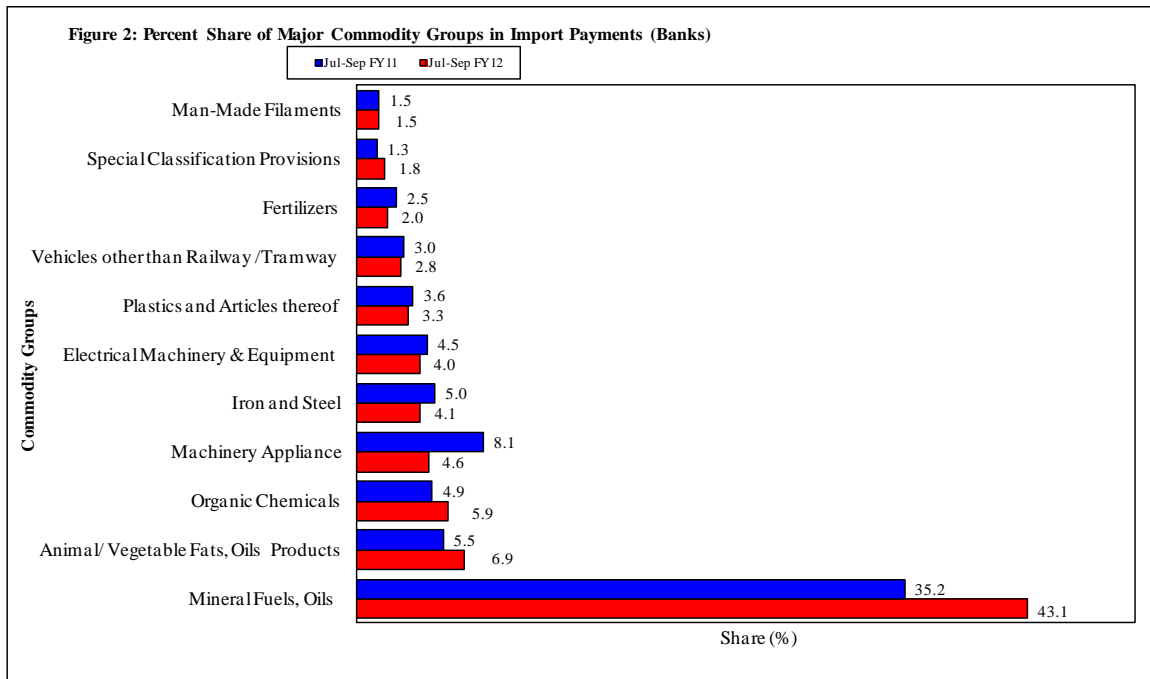
Figure 1. Import During Jul-Sep



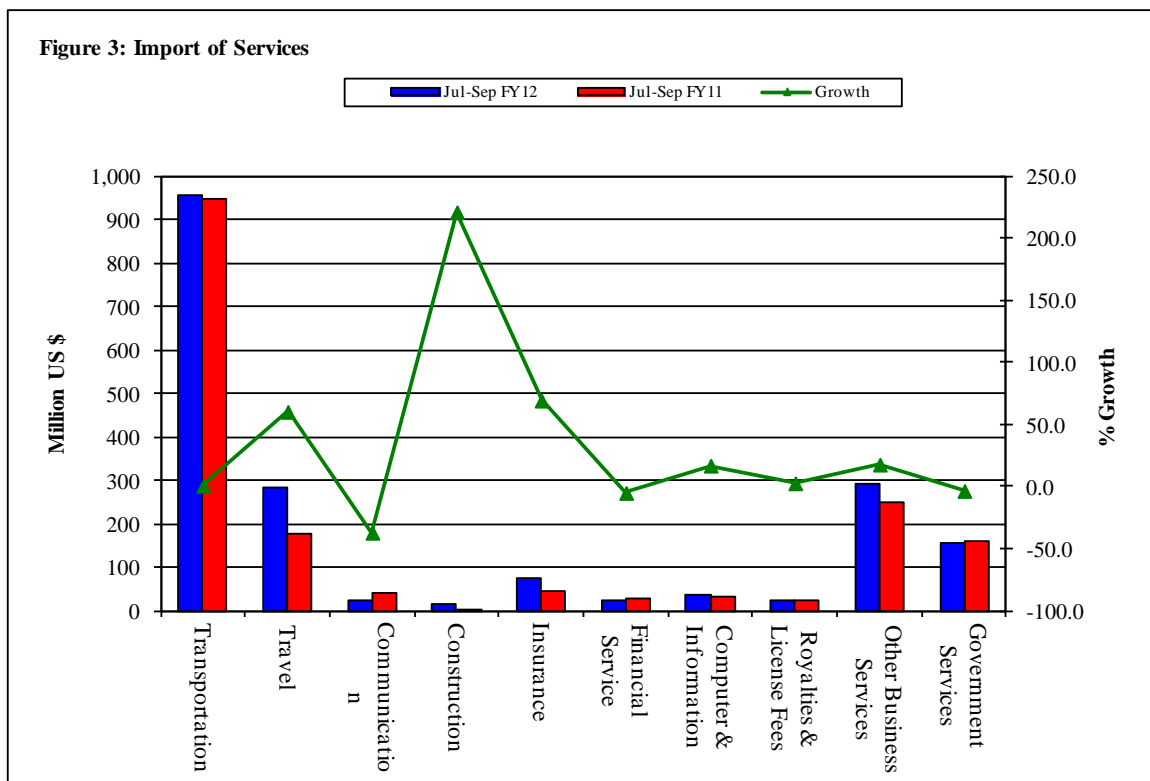
\*The data is import of goods based on Balance of Payments Manual 5 (BPM 5).

**Table 2: Import Payments by Major Groups of Goods & Services** (Amount in Million)

Goods/ Services	September			July-September		% Change
	2011	2011	2010	2011-12	2010-11	
	Pak Rs.	US \$				
<b>Goods</b>						
I. Import Payments (Banks)	303,852	3,474	2,519	10,285	8,471	21.4
Mineral Fuels, Oils and Their Distillation Product	127,330	1,456	807	4,428	2,979	48.6
Animal or Vegetable Fats, Oils & Cleavage Products	19,299	221	140	711	470	51.5
Organic Chemicals	17,798	203	146	604	411	46.8
Nuclear Reactors, Boilers, Machinery and Appliance	13,550	155	190	472	687	-31.2
Iron and Steel	13,370	153	137	422	424	-0.5
Electrical Machinery & Equipment and Parts thereof	14,773	169	124	415	382	8.6
Plastics and Articles thereof	9,689	111	92	341	306	11.2
Vehicles other than Railway /Tramway Rolling Stock	9,666	111	86	293	255	15.1
Fertilizers	7,572	87	39	203	216	-5.9
Special Classification Provisions	5,987	68	38	187	108	72.4
Man-Made Staple Fibers	4,961	57	34	149	123	21.5
Man-Made Filaments	4,634	53	36	149	108	38.6
Miscellaneous Chemical Products	4,575	52	41	147	128	14.3
Ships, Boats and Floating Structures	5,216	60	52	119	113	5.5
Edible Vegetables	3,280	37	50	117	114	2.6
Organic or Inorganic Compounds of Precious Metals	2,465	28	33	110	107	3.1
Rubbers and Articles thereof	3,179	36	23	109	77	42.5
Paper and Paperboard, Articles of Paper Pulp	3,219	37	23	106	67	59.8
All Others	33,289	381	426	1,202	1,397	-14.0
II. Freight & Insurance	18,231	208	201	617	678	-8.9
III. Other Import Unaccounted by Banks	7,160	82	40	400	360	11.3
<b>(A) Import General Merchandise (I-II+III)</b>	<b>292,780</b>	<b>3,347</b>	<b>2,357</b>	<b>10,069</b>	<b>8,153</b>	<b>23.5</b>
<b>(B) Other Import under BPM5*</b>	<b>2,976</b>	<b>34</b>	<b>24</b>	<b>109</b>	<b>79</b>	<b>37.0</b>
<b>(C) Import of Goods (A+B)</b>	<b>295,756</b>	<b>3,381</b>	<b>2,381</b>	<b>10,178</b>	<b>8,233</b>	<b>23.6</b>
<b>Services</b>						
Transportation	27,033	310	287	954	948	0.6
Travel	9,382	107	61	285	178	60.2
Communication Services	888	10	19	25	40	-37.1
Construction Services	264	3	2	13	4	220.9
Insurance Services	2,830	32	13	73	43	69.2
Financial Services	667	8	14	25	26	-5.0
Computer & Information Services	1,082	12	12	37	32	16.9
Royalties & License fees	1,118	13	12	24	23	2.7
Other Business Services	12,134	139	83	291	247	17.7
Personal, cultural & recreational Services	87	1	2	1	4	-67.0
Government Services	3,718	43	83	154	159	-3.4
<b>(D) Total Import of Services</b>	<b>59,201</b>	<b>678</b>	<b>588</b>	<b>1,882</b>	<b>1,704</b>	<b>10.4</b>
<b>Total Import of Goods &amp; Services (C+D)</b>	<b>354,957</b>	<b>4,059</b>	<b>2,969</b>	<b>12,059</b>	<b>9,937</b>	<b>21.4</b>

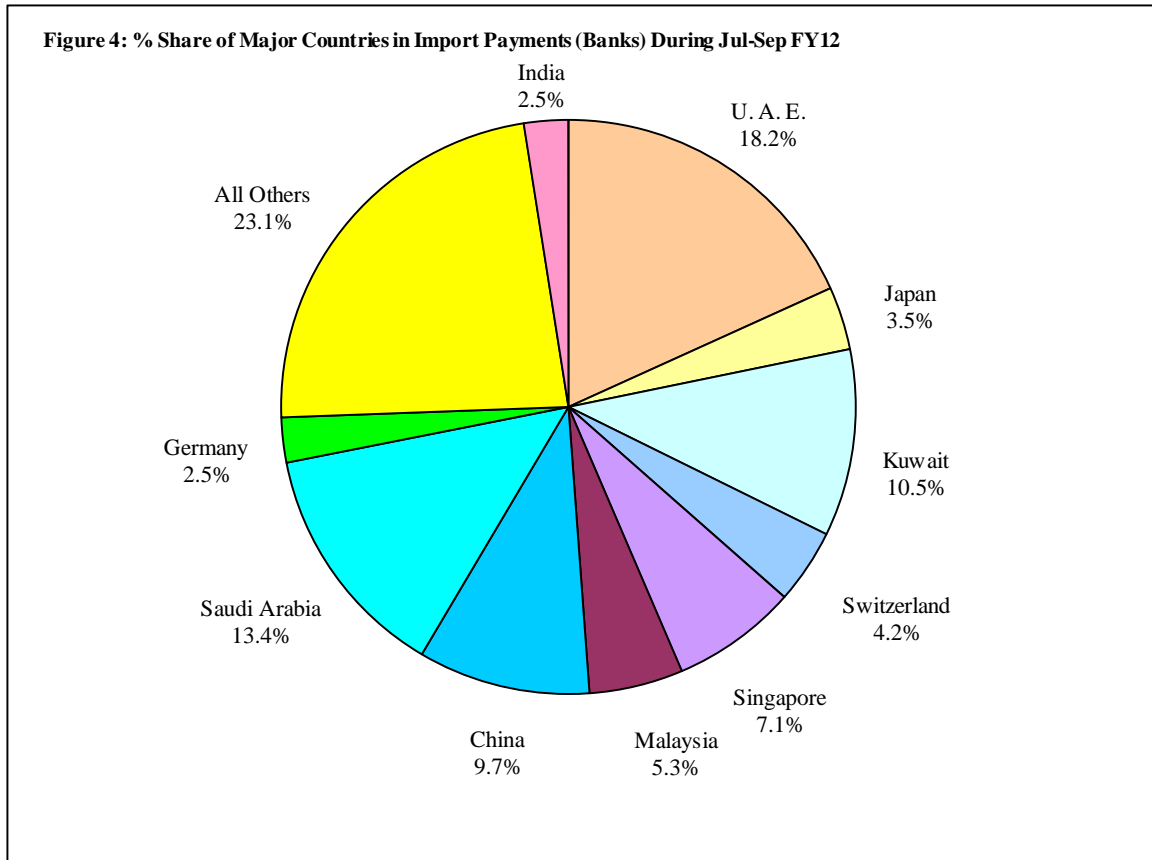


Note: - The share is based on the share of commodities in Import Payments through Banks

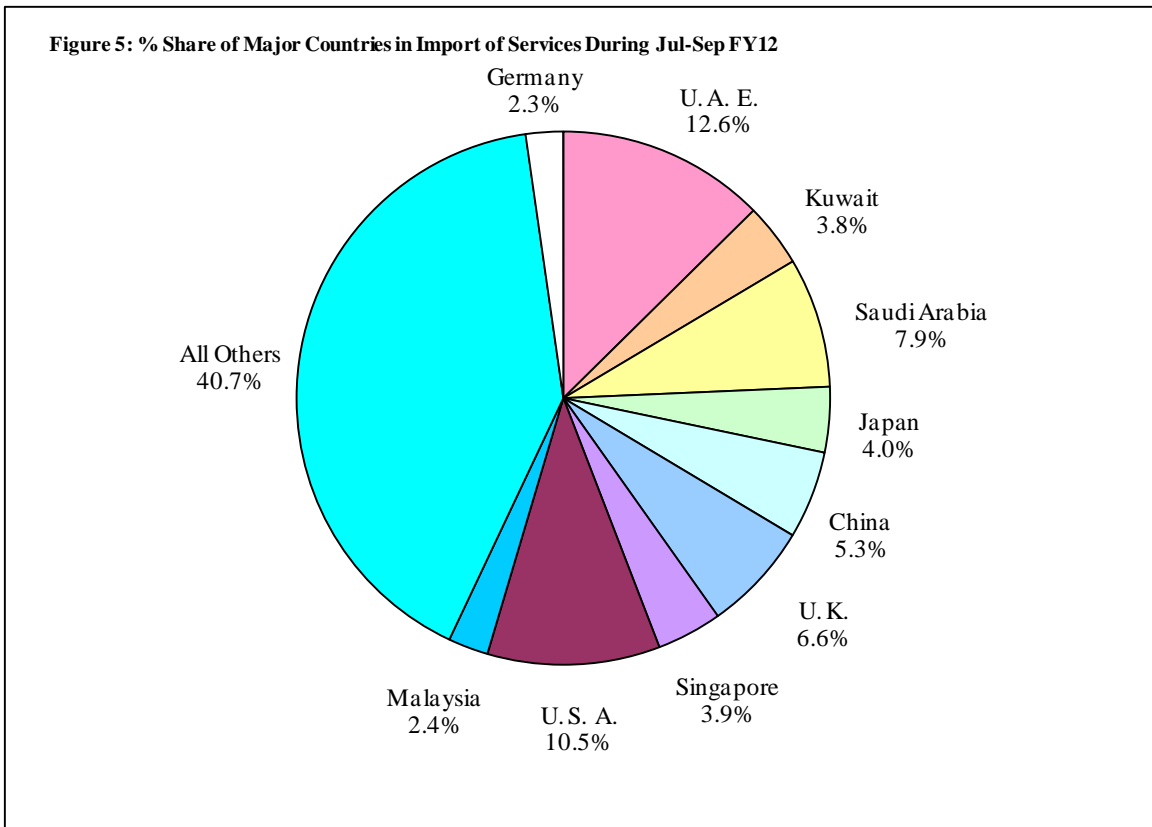


**Table 3: Import of Goods & Services by Major Countries** (Amount in Million)

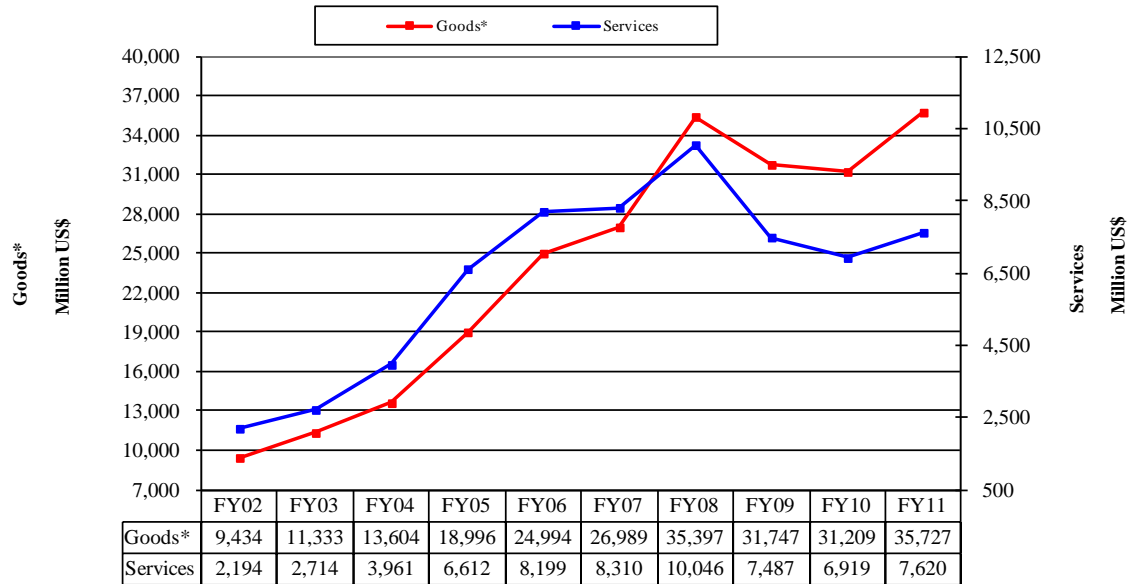
Country	September			July- September		% Change
	2011	2011	2010	2011-12	2010-11	
	Pak Rs.	US \$				
<b>Goods</b>						
I. Import Payments (Banks)	303,852	3,474	2,519	10,285	8,471	21.4
U. A. E.	47,707	545	428	1,875	1,346	39.3
Saudi Arabia	53,654	613	226	1,377	849	62.1
Kuwait	27,486	314	200	1,083	734	47.6
China	31,940	365	282	995	992	0.3
Singapore	24,975	286	198	726	643	12.9
Malaysia	15,131	173	111	543	388	39.9
Switzerland	10,230	117	73	431	270	59.5
Japan	10,942	125	103	364	306	18.9
Germany	6,808	78	61	259	196	32.0
India	8,182	94	68	255	247	3.3
U. S. A.	5,527	63	84	191	284	-32.8
U. K.	5,082	58	57	175	166	5.5
Thailand	4,837	55	41	170	124	36.4
Indonesia	4,812	55	29	159	96	65.6
South Korea	5,088	58	47	156	128	21.9
All Others	41,453	474	511	1,527	1,701	-10.2
II. Freight & Insurance	18,231	208	201	617	678	-8.9
III. Other Import Unaccounted by Banks	7,160	82	40	400	360	11.3
<b>(A) Import General Merchandise (I-II+III)</b>	<b>292,780</b>	<b>3,347</b>	<b>2,357</b>	<b>10,069</b>	<b>8,153</b>	<b>23.5</b>
<b>(B) Other Import under BPM5*</b>	<b>2,976</b>	<b>34</b>	<b>24</b>	<b>109</b>	<b>79</b>	<b>37.0</b>
<b>(C) Import of Goods (A+B)</b>	<b>295,756</b>	<b>3,381</b>	<b>2,381</b>	<b>10,178</b>	<b>8,233</b>	<b>23.6</b>
<b>Services</b>						
U. A. E.	6,605	76	60	237	171	38.7
U. S. A.	6,962	80	70	197	224	-12.1
Saudi Arabia	4,884	56	32	148	123	20.8
U. K.	4,358	50	48	124	137	-9.5
China	2,978	34	40	100	128	-22.0
Japan	4,521	52	15	75	37	103.6
Singapore	2,181	25	22	74	73	2.3
Kuwait	1,872	21	18	72	65	10.4
Malaysia	1,275	15	19	46	44	2.6
Germany	1,465	17	12	43	32	33.3
Switzerland	1,033	12	11	38	34	9.8
Thailand	972	11	7	31	27	15.4
Hongkong	799	9	7	23	21	8.5
Bahrain	551	6	6	22	18	23.1
France	669	8	9	21	23	-10.5
All Other	18,074	207	212	631	546	15.6
<b>(D) Total Import of Services</b>	<b>59,201</b>	<b>678</b>	<b>588</b>	<b>1,882</b>	<b>1,704</b>	<b>10.4</b>
<b>Total Import of Goods &amp; Services (C+D)</b>	<b>354,957</b>	<b>4,059</b>	<b>2,969</b>	<b>12,059</b>	<b>9,937</b>	<b>21.4</b>



Note: % Share is based on Import Payments through Banks



**Figure 6: Annual Import of Goods & Services from FY01 to FY10**



**Figure 7: Monthly Imports of Goods & Services**



\* The data before FY05 is import general merchandise based on Balance of Payments Manual 4 (BPM 4) and onward on Balance of Payments Manual 5 (BPM 5).

**Table 4: Annual, Quarterly & Monthly Import of Goods\*\*** (Million US\$)

Period	FY03	FY04	FY05	FY06	FY07	FY08	FY09	FY10	FY11	FY12
Annual	11,333	13,604	18,996	24,994	26,989	35,397	31,747	31,209	35,727	
Growth (%)	20.1	20.0	39.6	31.6	8.0	31.2	-10.3	-1.7	14.5	
<b><u>Quarter-wise</u></b>										
Quarter-I	2,769 (24.4)	3,014 (22.2)	4,175 (22.0)	5,925 (23.7)	6,933 (25.7)	6,940 (19.6)	10,230 (32.2)	7,485 (24.0)	8,233 (23.0)	10,178
Quarter-II	2,853 (25.2)	3,204 (23.6)	5,047 (26.6)	6,074 (24.3)	6,768 (25.1)	8,548 (24.1)	8,077 (25.4)	7,691 (24.6)	8,613 (24.1)	
Quarter-III	2,744 (24.2)	3,602 (26.5)	4,801 (25.3)	6,261 (25.1)	6,454 (23.9)	9,765 (27.6)	6,275 (19.8)	7,367 (23.6)	9,158 (25.6)	
Quarter-IV	2,967 (26.2)	3,784 (27.8)	4,973 (26.2)	6,734 (26.9)	6,834 (25.3)	10,144 (28.7)	7,165 (22.6)	8,666 (27.8)	9,723 (27.2)	
<b><u>Month-wise</u></b>										
July	943 (8.3)	1,020 (7.5)	1,440 (7.6)	1,772 (7.1)	2,418 (9.0)	2,411 (6.8)	3,373 (10.6)	2,818 (9.0)	2,923 (8.2)	3,171
August	974 (8.6)	930 (6.8)	1,311 (6.9)	2,087 (8.4)	2,308 (8.6)	2,259 (6.4)	3,162 (10.0)	2,189 (7.0)	2,929 (8.2)	3,626
September	852 (7.5)	1,064 (7.8)	1,424 (7.5)	2,066 (8.3)	2,207 (8.2)	2,269 (6.4)	3,694 (11.6)	2,478 (7.9)	2,381 (6.7)	3,381
October	899 (7.9)	1,057 (7.8)	1,616 (8.5)	2,055 (8.2)	2,205 (8.2)	2,604 (7.4)	3,243 (10.2)	2,756 (8.8)	2,615 (7.3)	
November	920 (8.1)	876 (6.4)	1,745 (9.2)	2,059 (8.2)	2,161 (8.0)	2,963 (8.4)	2,233 (7.0)	2,194 (7.0)	2,807 (7.9)	
December	1,034 (9.1)	1,271 (9.3)	1,686 (8.9)	1,960 (7.8)	2,402 (8.9)	2,980 (8.4)	2,601 (8.2)	2,741 (8.8)	3,191 (8.9)	
January	924 (8.2)	1,168 (8.6)	1,427 (7.5)	2,070 (8.3)	2,105 (7.8)	3,329 (9.4)	2,140 (6.7)	2,536 (8.1)	2,796 (7.8)	
February	827 (7.3)	1,212 (8.9)	1,591 (8.4)	1,886 (7.5)	2,226 (8.2)	2,913 (8.2)	1,884 (5.9)	2,345 (7.5)	3,065 (8.6)	
March	993 (8.8)	1,222 (9.0)	1,783 (9.4)	2,305 (9.2)	2,123 (7.9)	3,523 (10.0)	2,251 (7.1)	2,486 (8.0)	3,298 (9.2)	
April	979 (8.6)	1,230 (9.0)	1,508 (7.9)	1,682 (6.7)	2,185 (8.1)	3,391 (9.6)	2,370 (7.5)	2,916 (9.3)	2,906 (8.1)	
May	959 (8.5)	1,166 (8.6)	1,741 (9.2)	2,361 (9.4)	2,214 (8.2)	3,246 (9.2)	2,002 (6.3)	2,638 (8.5)	3,370 (9.4)	
June	1,029 (9.1)	1,388 (10.2)	1,724 (9.1)	2,691 (10.8)	2,435 (9.0)	3,507 (9.9)	2,793 (8.8)	3,112 (10.0)	3,447 (9.6)	

Notes: 1. Figures in parentheses are percentage to annual import payments of the respective years

2. Due to rounding off separate items, totals may show minor differences

\* The data before FY05 is import general merchandise based on Balance of Payments Manual 4 (BPM 4) and onward on Balance of Payments Manual 5 (BPM 5).

**Table 5: Annual, Quarterly & Monthly Import of Services** (Million US\$)

Period	FY03	FY04	FY05	FY06	FY07	FY08	FY09	FY10	FY11	FY12
Annual	2,714	3,961	6,612	8,199	8,310	10,046	7,487	6,919	7,620	
Growth (%)	23.7	45.9	66.9	24.0	1.4	20.9	-25.5	-7.6	10.1	
<b><u>Quarter-wise</u></b>										
Quarter-I	579 (21.3)	799 (20.2)	1,449 (21.9)	1,953 (23.8)	2,039 (24.5)	2,194 (21.8)	2,392 (31.9)	1,585 (22.9)	1,704 (22.4)	1,882
Quarter-II	586 (21.6)	945 (23.9)	1,669 (25.2)	2,061 (25.1)	2,193 (26.4)	2,548 (25.4)	2,021 (27.0)	1,892 (27.3)	1,943 (25.5)	
Quarter-III	649 (23.9)	1,097 (27.7)	1,764 (26.7)	2,061 (25.1)	2,014 (24.2)	2,569 (25.6)	1,389 (18.6)	1,582 (22.9)	1,824 (23.9)	
Quarter-IV	900 (33.2)	1,120 (28.3)	1,730 (26.2)	2,124 (25.9)	2,064 (24.8)	2,735 (27.2)	1,685 (22.5)	1,860 (26.9)	2,149 (28.2)	
<b><u>Month-wise</u></b>										
July	181 (6.7)	305 (7.7)	432 (6.5)	573 (7.0)	735 (8.8)	755 (7.5)	743 (9.9)	568 (8.2)	560 (7.3)	611
August	184 (6.8)	207 (5.2)	473 (7.2)	735 (9.0)	619 (7.4)	757 (7.5)	816 (10.9)	489 (7.1)	556 (7.3)	593
September	214 (7.9)	287 (7.2)	544 (8.2)	645 (7.9)	685 (8.2)	682 (6.8)	833 (11.1)	528 (7.6)	588 (7.7)	678
October	189 (7.0)	327 (8.3)	525 (7.9)	626 (7.6)	645 (7.8)	782 (7.8)	839 (11.2)	691 (10.0)	696 (9.1)	
November	195 (7.2)	238 (6.0)	489 (7.4)	674 (8.2)	782 (9.4)	963 (9.6)	577 (7.7)	562 (8.1)	590 (7.7)	
December	202 (7.4)	380 (9.6)	655 (9.9)	761 (9.3)	766 (9.2)	803 (8.0)	605 (8.1)	639 (9.2)	657 (8.6)	
January	248 (9.1)	378 (9.5)	539 (8.2)	672 (8.2)	683 (8.2)	894 (8.9)	448 (6.0)	500 (7.2)	578 (7.6)	
February	185 (6.8)	339 (8.6)	561 (8.5)	622 (7.6)	633 (7.6)	751 (7.5)	458 (6.1)	495 (7.2)	564 (7.4)	
March	216 (8.0)	380 (9.6)	664 (10.0)	767 (9.4)	698 (8.4)	924 (9.2)	483 (6.5)	587 (8.5)	682 (9.0)	
April	331 (12.2)	379 (9.6)	610 (9.2)	617 (7.5)	680 (8.2)	999 (9.9)	542 (7.2)	618 (8.9)	624 (8.2)	
May	276 (10.2)	355 (9.0)	582 (8.8)	744 (9.1)	657 (7.9)	797 (7.9)	523 (7.0)	582 (8.4)	718 (9.4)	
June	293 (10.8)	386 (9.7)	538 (8.1)	763 (9.3)	727 (8.7)	939 (9.3)	620 (8.3)	660 (9.5)	807 (10.6)	

Notes: 1. Figures in parentheses are percentage to annual import payments of the respective years

2. Due to rounding off separate items, totals may show minor differences