

## SUMMARY

Table 1(a) : Monthly Import of Goods &amp; Services

(Million US\$)

Items	October	
	2011	2010
I. Import Payments (Banks)	3,171	2,607
II. Freight & Insurance	190	209
III. Other Import unaccounted by Banks	108	188
Unclassified Imports	54	134
Imports NRI, Sale of Duty Free Shops	21	5
Imports under Foreign Economic Assistance	15	42
Land borne Imports with Afghanistan	14	12
PIA & PNSC	8	2
Capital Equipment	0	0
Cost of Imports (Ex. Cos.)	0	0
Refund & Rebate	-4	-10
Import from EPZ	0	0
Imports from Accounts Abroad	0	3
<b>(A) Import General Merchandise (I-II+III)</b>	<b>3,089</b>	<b>2,587</b>
<b>(B) Other Import under BPM5*</b>	<b>44</b>	<b>36</b>
<b>(C) Import of Goods (A+B)</b>	<b>3,133</b>	<b>2,622</b>
<b>(D) Import of Services</b>	<b>674</b>	<b>703</b>
<b>(E) Import of Goods &amp; Services (C+D)</b>	<b>3,807</b>	<b>3,326</b>

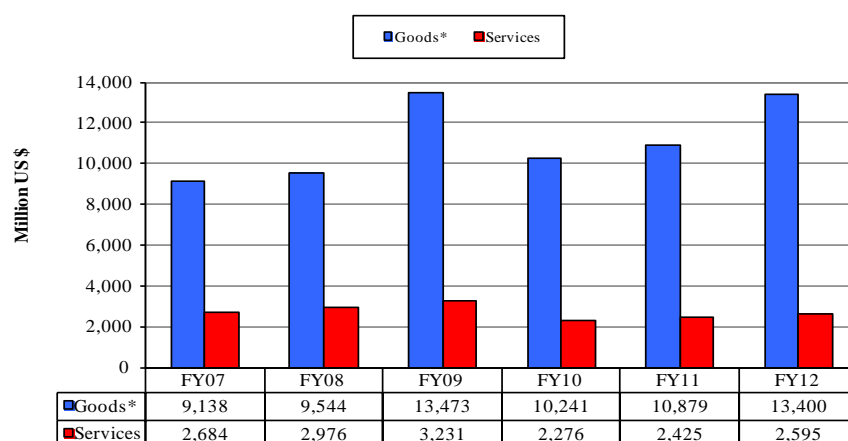
\* See "Introduction" for details:

Table 1(b) : Key Indicators of Import of Goods and Services

(Million US\$)

October 2011	3,807
September 2011	4,187
% Change during October 2011 over September 2011	-9.1
October 2010	3,326
% Change during October 2011 over October 2010	14.5
July-October 2011-12	15,994
July-October 2010-11	13,304
% Change during July-October 2011-12 over July-October 2010-11	20.2
Monthly average during July-October 2011-12	3,999
Monthly average during July-October 2010-11	3,326
FY11	43,522
FY10	38,128
% Change during FY11 over FY10	14.1
Monthly average during FY11	3,627
Monthly average during FY10	3,177

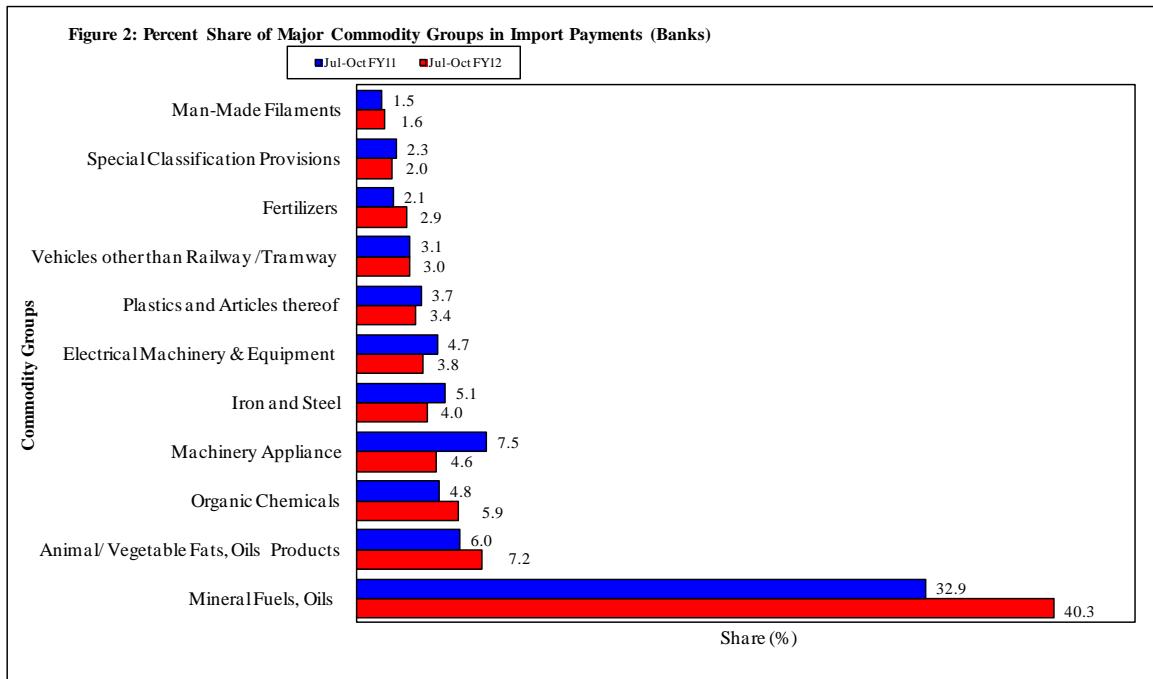
Figure 1. Import During Jul-Oct



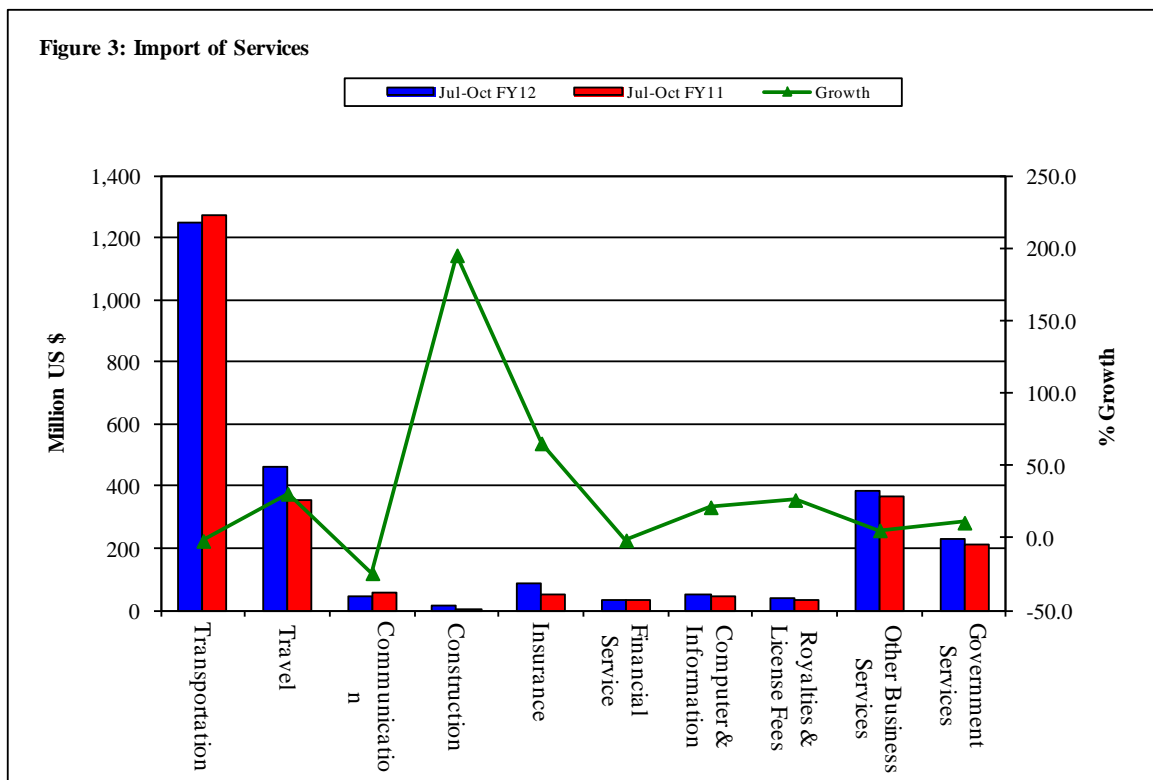
\*The data is import of goods based on Balance of Payments Manual 5 (BPM 5).

**Table 2: Import Payments by Major Groups of Goods & Services** (Amount in Million)

Goods/ Services	October			July-October		% Change
	2011	2011	2010	2011-12	2010-11	
	Pak Rs.	US \$				
<b>Goods</b>						
I. Import Payments (Banks)	275,804	3,171	2,607	13,457	11,078	21.5
Mineral Fuels, Oils and Their Distillation Product	86,307	992	663	5,421	3,642	48.8
Animal or Vegetable Fats, Oils & Cleavage Products	22,415	258	190	969	660	46.8
Organic Chemicals	16,079	185	118	789	529	49.0
Nuclear Reactors, Boilers, Machinery and Appliance	13,146	151	147	624	834	-25.2
Iron and Steel	10,667	123	142	545	566	-3.8
Electrical Machinery & Equipment and Parts thereof	8,893	102	134	517	516	0.2
Plastics and Articles thereof	10,269	118	106	459	412	11.3
Vehicles other than Railway /Tramway Rolling Stock	9,966	115	89	408	344	18.7
Fertilizers	15,712	181	18	384	234	64.0
Special Classification Provisions	7,599	87	145	274	253	8.2
Man-Made Staple Fibers	5,751	66	41	215	164	31.5
Man-Made Filaments	4,454	51	38	200	146	37.4
Miscellaneous Chemical Products	3,898	45	36	192	164	16.7
Organic or Inorganic Compounds of Precious Metals	5,702	66	41	176	148	18.8
Edible Vegetables	4,469	51	60	168	175	-3.5
Oil Seeds and Oleaginous Fruit	6,102	70	62	168	161	4.3
Cotton	5,404	62	41	153	224	-31.7
Ships, Boats and Floating Structures	2,335	27	47	146	160	-8.4
All Others	36,635	421	488	1,649	1,746	-5.5
II. Freight & Insurance	16,548	190	209	807	886	-8.9
III. Other Import Unaccounted by Banks	9,371	108	188	587	572	2.7
<b>(A) Import General Merchandise (I-II+III)</b>	<b>268,627</b>	<b>3,089</b>	<b>2,587</b>	<b>13,237</b>	<b>10,764</b>	<b>23.0</b>
<b>(B) Other Import under BPM5*</b>	<b>3,835</b>	<b>44</b>	<b>36</b>	<b>163</b>	<b>115</b>	<b>41.4</b>
<b>(C) Import of Goods (A+B)</b>	<b>272,462</b>	<b>3,133</b>	<b>2,622</b>	<b>13,400</b>	<b>10,879</b>	<b>23.2</b>
<b>Services</b>						
Transportation	25,255	290	320	1,249	1,273	-1.9
Travel	14,061	162	175	461	353	30.6
Communication Services	1,579	18	17	43	57	-24.2
Construction Services	2	0	1	13	5	195.1
Insurance Services	1,333	15	10	88	53	65.3
Financial Services	807	9	8	34	34	-1.5
Computer & Information Services	1,218	14	10	51	42	21.3
Royalties & License fees	1,354	16	8	40	31	26.3
Other Business Services	7,403	85	107	383	364	5.3
Personal, cultural & recreational Services	65	1	0	2	4	-48.0
Government Services	5,568	64	47	231	209	10.7
<b>(D) Total Import of Services</b>	<b>58,646</b>	<b>674</b>	<b>703</b>	<b>2,595</b>	<b>2,425</b>	<b>7.0</b>
<b>Total Import of Goods &amp; Services (C+D)</b>	<b>331,108</b>	<b>3,807</b>	<b>3,326</b>	<b>15,994</b>	<b>13,304</b>	<b>20.2</b>



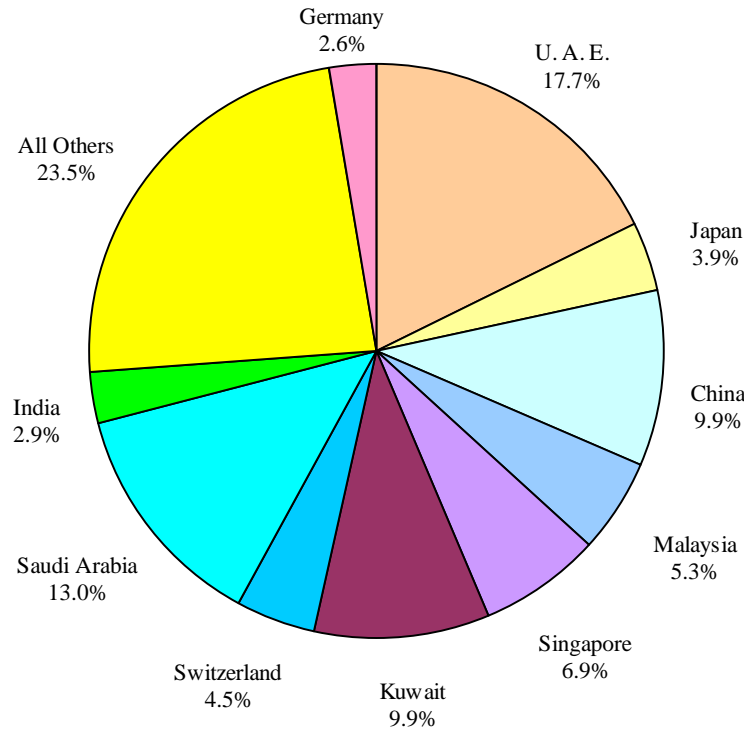
Note: - The share is based on the share of commodities in Import Payments through Banks



**Table 3: Import of Goods & Services by Major Countries** (Amount in Million)

Country	October			July- October		% Change
	2011	2011	2010	2011-12	2010-11	
	Pak Rs.	US \$				
<b>Goods</b>						
I. Import Payments (Banks)	275,804	3,171	2,607	13,457	11,078	21.5
U. A. E.	44,132	507	417	2,383	1,763	35.2
Saudi Arabia	32,439	373	263	1,750	1,112	57.3
China	29,142	335	347	1,330	1,338	-0.6
Kuwait	21,157	243	104	1,327	838	58.3
Singapore	17,211	198	243	924	887	4.2
Malaysia	14,680	169	146	712	534	33.2
Switzerland	14,737	169	62	601	332	80.9
Japan	13,855	159	102	523	408	28.2
India	11,359	131	95	386	342	12.8
Germany	8,463	97	91	356	288	23.9
U. S. A.	4,965	57	53	248	337	-26.3
U. K.	4,847	56	56	231	222	4.0
Thailand	4,405	51	46	220	170	29.1
South Korea	4,422	51	41	207	169	22.6
Indonesia	3,714	43	31	202	127	59.2
All Others	46,277	532	510	2,059	2,211	-6.9
II. Freight & Insurance	16,548	190	209	807	886	-8.9
III. Other Import Unaccounted by Banks	9,371	108	188	587	572	2.7
<b>(A) Import General Merchandise (I-II+III)</b>	<b>268,627</b>	<b>3,089</b>	<b>2,587</b>	<b>13,237</b>	<b>10,764</b>	<b>23.0</b>
<b>(B) Other Import under BPM5*</b>	<b>3,835</b>	<b>44</b>	<b>36</b>	<b>163</b>	<b>115</b>	<b>41.4</b>
<b>(C) Import of Goods (A+B)</b>	<b>272,462</b>	<b>3,133</b>	<b>2,622</b>	<b>13,400</b>	<b>10,879</b>	<b>23.2</b>
<b>Services</b>						
U. A. E.	7,364	85	80	317	253	25.4
U. S. A.	5,258	60	77	257	306	-16.2
Saudi Arabia	3,500	40	57	187	181	2.9
U. K.	3,623	42	51	166	188	-11.8
China	2,644	30	48	130	175	-25.9
Singapore	1,847	21	26	95	101	-5.6
Japan	1,622	19	15	94	54	74.7
Kuwait	1,408	16	10	87	75	15.1
Thailand	1,957	22	8	65	35	84.7
Malaysia	1,488	17	13	64	57	11.5
Switzerland	1,520	17	10	57	44	29.2
Germany	1,293	15	17	57	50	13.3
Hongkong	824	9	10	30	30	0.0
Bahrain	657	8	3	29	21	41.5
France	578	7	10	27	33	-16.0
All Other	23,062	265	270	935	823	13.6
<b>(D) Total Import of Services</b>	<b>58,646</b>	<b>674</b>	<b>703</b>	<b>2,595</b>	<b>2,425</b>	<b>7.0</b>
<b>Total Import of Goods &amp; Services (C+D)</b>	<b>331,108</b>	<b>3,807</b>	<b>3,326</b>	<b>15,994</b>	<b>13,304</b>	<b>20.2</b>

**Figure 4: % Share of Major Countries in Import Payments (Banks) During Jul-Oct FY12**



Note: % Share is based on Import Payments through Banks

**Figure 5: % Share of Major Countries in Import of Services During Jul-Oct FY12**

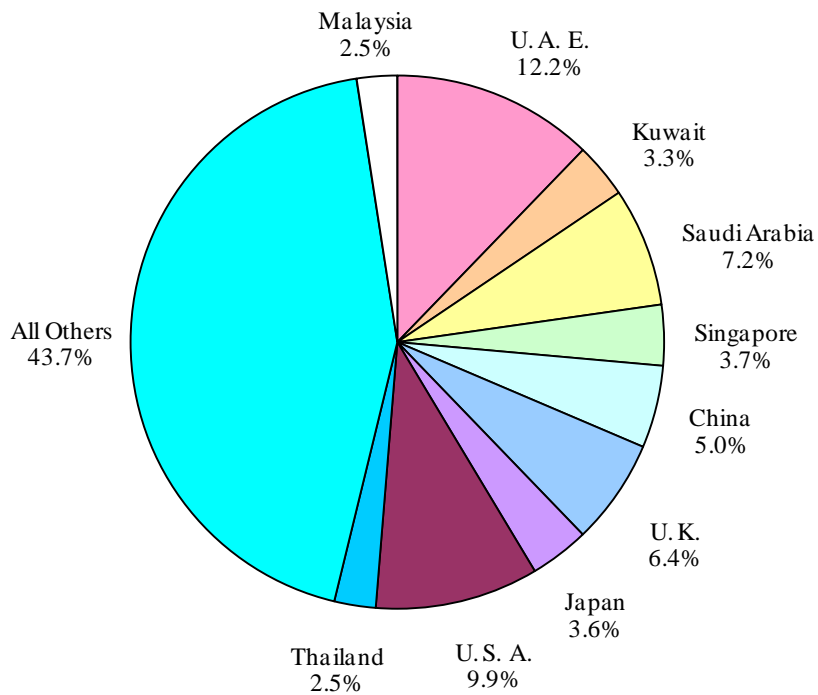


Figure 6: Annual Import of Goods & Services from FY02 to FY11

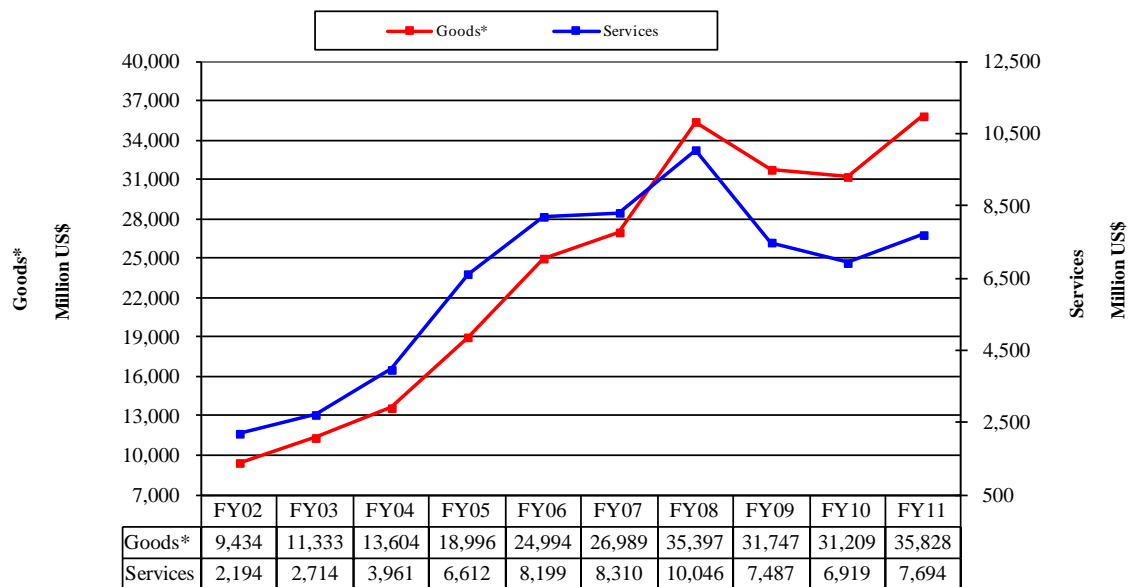
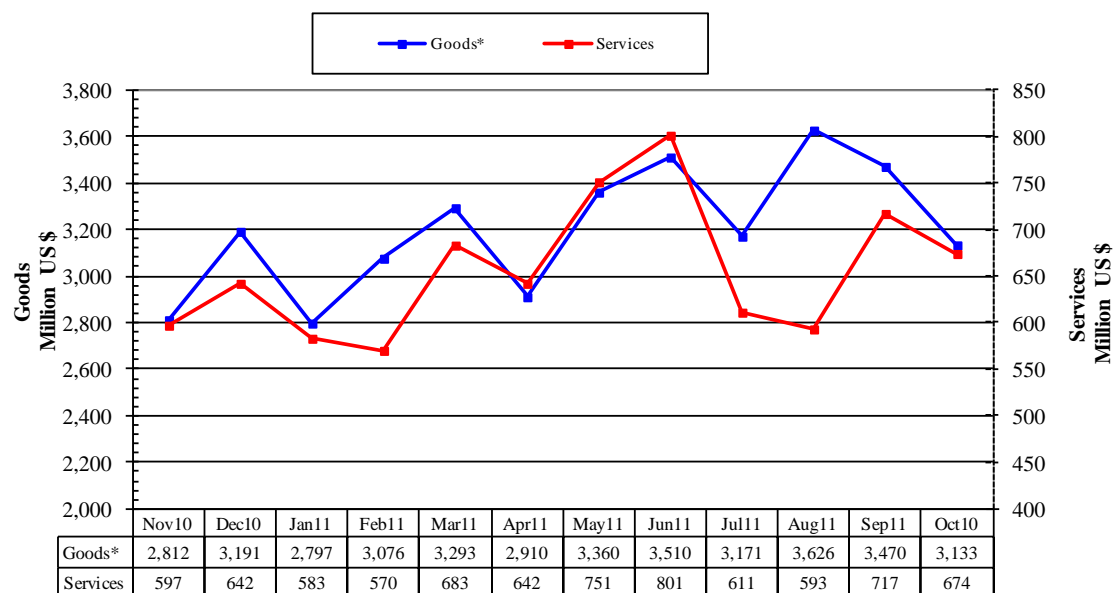


Figure 7: Monthly Imports of Goods & Services



\* The data before FY05 is import general merchandise based on Balance of Payments Manual 4 (BPM 4) and onward on Balance of Payments Manual 5 (BPM 5).

**Table 4: Annual, Quarterly & Monthly Import of Goods\*\*** (Million US\$)

Period	FY03	FY04	FY05	FY06	FY07	FY08	FY09	FY10	FY11	FY12
Annual	11,333	13,604	18,996	24,994	26,989	35,397	31,747	31,209	35,828	13,400*
Growth (%)	20.1	20.0	39.6	31.6	8.0	31.2	-10.3	-1.7	14.8	
<b>Quarter-wise</b>										
Quarter-I	2,769 (24.4)	3,014 (22.2)	4,175 (22.0)	5,925 (23.7)	6,933 (25.7)	6,940 (19.6)	10,230 (32.2)	7,485 (24.0)	8,257 (23.0)	10,267
Quarter-II	2,853 (25.2)	3,204 (23.6)	5,047 (26.6)	6,074 (24.3)	6,768 (25.1)	8,548 (24.1)	8,077 (25.4)	7,691 (24.6)	8,625 (24.1)	
Quarter-III	2,744 (24.2)	3,602 (26.5)	4,801 (25.3)	6,261 (25.1)	6,454 (23.9)	9,765 (27.6)	6,275 (19.8)	7,367 (23.6)	9,166 (25.6)	
Quarter-IV	2,967 (26.2)	3,784 (27.8)	4,973 (26.2)	6,734 (26.9)	6,834 (25.3)	10,144 (28.7)	7,165 (22.6)	8,666 (27.8)	9,780 (27.3)	
<b>Month-wise</b>										
July	943 (8.3)	1,020 (7.5)	1,440 (7.6)	1,772 (7.1)	2,418 (9.0)	2,411 (6.8)	3,373 (10.6)	2,818 (9.0)	2,925 (8.2)	3,171
August	974 (8.6)	930 (6.8)	1,311 (6.9)	2,087 (8.4)	2,308 (8.6)	2,259 (6.4)	3,162 (10.0)	2,189 (7.0)	2,934 (8.2)	3,626
September	852 (7.5)	1,064 (7.8)	1,424 (7.5)	2,066 (8.3)	2,207 (8.2)	2,269 (6.4)	3,694 (11.6)	2,478 (7.9)	2,398 (6.7)	3,470
October	899 (7.9)	1,057 (7.8)	1,616 (8.5)	2,055 (8.2)	2,205 (8.2)	2,604 (7.4)	3,243 (10.2)	2,756 (8.8)	2,622 (7.3)	3,133
November	920 (8.1)	876 (6.4)	1,745 (9.2)	2,059 (8.2)	2,161 (8.0)	2,963 (8.4)	2,233 (7.0)	2,194 (7.0)	2,812 (7.8)	
December	1,034 (9.1)	1,271 (9.3)	1,686 (8.9)	1,960 (7.8)	2,402 (8.9)	2,980 (8.4)	2,601 (8.2)	2,741 (8.8)	3,191 (8.9)	
January	924 (8.2)	1,168 (8.6)	1,427 (7.5)	2,070 (8.3)	2,105 (7.8)	3,329 (9.4)	2,140 (6.7)	2,536 (8.1)	2,797 (7.8)	
February	827 (7.3)	1,212 (8.9)	1,591 (8.4)	1,886 (7.5)	2,226 (8.2)	2,913 (8.2)	1,884 (5.9)	2,345 (7.5)	3,076 (8.6)	
March	993 (8.8)	1,222 (9.0)	1,783 (9.4)	2,305 (9.2)	2,123 (7.9)	3,523 (10.0)	2,251 (7.1)	2,486 (8.0)	3,293 (9.2)	
April	979 (8.6)	1,230 (9.0)	1,508 (7.9)	1,682 (6.7)	2,185 (8.1)	3,391 (9.6)	2,370 (7.5)	2,916 (9.3)	2,910 (8.1)	
May	959 (8.5)	1,166 (8.6)	1,741 (9.2)	2,361 (9.4)	2,214 (8.2)	3,246 (9.2)	2,002 (6.3)	2,638 (8.5)	3,360 (9.4)	
June	1,029 (9.1)	1,388 (10.2)	1,724 (9.1)	2,691 (10.8)	2,435 (9.0)	3,507 (9.9)	2,793 (8.8)	3,112 (10.0)	3,510 (9.8)	

Notes: 1. Figures in parentheses are percentage to annual import payments of the respective years

2. Due to rounding off separate items, totals may show minor differences

\* The total include figures for July to current month

\*\* The data before FY05 is import general merchandise based on Balance of Payments Manual 4 (BPM 4) and onward on Balance of Payments Manual 5 (BPM 5).

**Table 5: Annual, Quarterly & Monthly Import of Services** (Million US\$)

Period	FY03	FY04	FY05	FY06	FY07	FY08	FY09	FY10	FY11	FY12
Annual	2,714	3,961	6,612	8,199	8,310	10,046	7,487	6,919	7,694	2,595*
Growth (%)	23.7	45.9	66.9	24.0	1.4	20.9	-25.5	-7.6	11.2	
<b><u>Quarter-wise</u></b>										
Quarter-I	579 (21.3)	799 (20.2)	1,449 (21.9)	1,953 (23.8)	2,039 (24.5)	2,194 (21.8)	2,392 (31.9)	1,585 (22.9)	1,722 (22.4)	1,921
Quarter-II	586 (21.6)	945 (23.9)	1,669 (25.2)	2,061 (25.1)	2,193 (26.4)	2,548 (25.4)	2,021 (27.0)	1,892 (27.3)	1,942 (25.2)	
Quarter-III	649 (23.9)	1,097 (27.7)	1,764 (26.7)	2,061 (25.1)	2,014 (24.2)	2,569 (25.6)	1,389 (18.6)	1,582 (22.9)	1,836 (23.9)	
Quarter-IV	900 (33.2)	1,120 (28.3)	1,730 (26.2)	2,124 (25.9)	2,064 (24.8)	2,735 (27.2)	1,685 (22.5)	1,860 (26.9)	2,194 (28.5)	
<b><u>Month-wise</u></b>										
July	181 (6.7)	305 (7.7)	432 (6.5)	573 (7.0)	735 (8.8)	755 (7.5)	743 (9.9)	568 (8.2)	565 (7.3)	611
August	184 (6.8)	207 (5.2)	473 (7.2)	735 (9.0)	619 (7.4)	757 (7.5)	816 (10.9)	489 (7.1)	561 (7.3)	593
September	214 (7.9)	287 (7.2)	544 (8.2)	645 (7.9)	685 (8.2)	682 (6.8)	833 (11.1)	528 (7.6)	596 (7.7)	717
October	189 (7.0)	327 (8.3)	525 (7.9)	626 (7.6)	645 (7.8)	782 (7.8)	839 (11.2)	691 (10.0)	703 (9.1)	674
November	195 (7.2)	238 (6.0)	489 (7.4)	674 (8.2)	782 (9.4)	963 (9.6)	577 (7.7)	562 (8.1)	597 (7.8)	
December	202 (7.4)	380 (9.6)	655 (9.9)	761 (9.3)	766 (9.2)	803 (8.0)	605 (8.1)	639 (9.2)	642 (8.3)	
January	248 (9.1)	378 (9.5)	539 (8.2)	672 (8.2)	683 (8.2)	894 (8.9)	448 (6.0)	500 (7.2)	583 (7.6)	
February	185 (6.8)	339 (8.6)	561 (8.5)	622 (7.6)	633 (7.6)	751 (7.5)	458 (6.1)	495 (7.2)	570 (7.4)	
March	216 (8.0)	380 (9.6)	664 (10.0)	767 (9.4)	698 (8.4)	924 (9.2)	483 (6.5)	587 (8.5)	683 (8.9)	
April	331 (12.2)	379 (9.6)	610 (9.2)	617 (7.5)	680 (8.2)	999 (9.9)	542 (7.2)	618 (8.9)	642 (8.3)	
May	276 (10.2)	355 (9.0)	582 (8.8)	744 (9.1)	657 (7.9)	797 (7.9)	523 (7.0)	582 (8.4)	751 (9.8)	
June	293 (10.8)	386 (9.7)	538 (8.1)	763 (9.3)	727 (8.7)	939 (9.3)	620 (8.3)	660 (9.5)	801 (10.4)	

Notes: 1. Figures in parentheses are percentage to annual import payments of the respective years

2. Due to rounding off separate items, totals may show minor differences

\* The total include figures for July to current month