

SUMMARY

Table 1(a) : Monthly Import of Goods & Services (Million US\$)

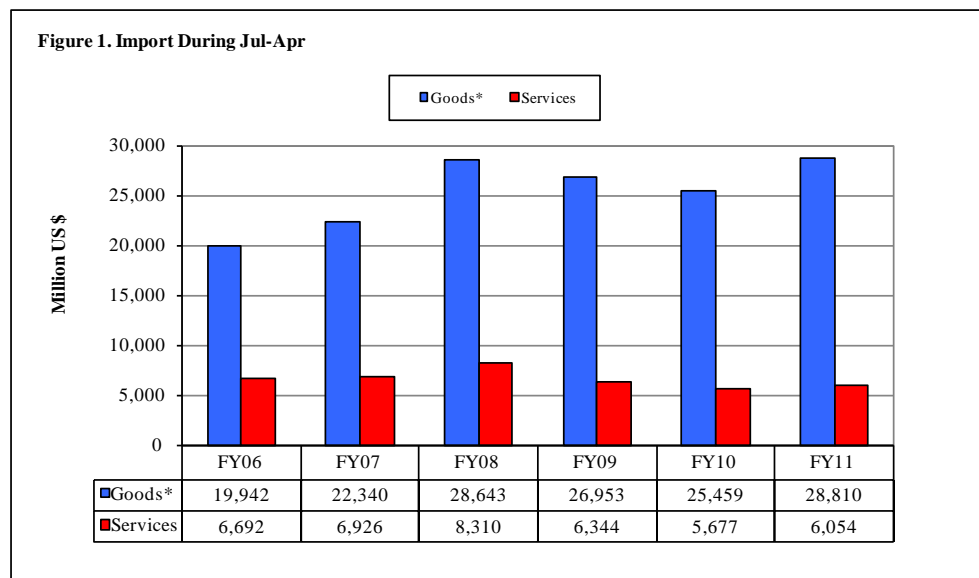
Items	April	
	2011	2010
I. Import Payments (Banks)	2,962	2,796
II. Freight & Insurance	237	224
III. Other Import unaccounted by Banks	68	330
Unclassified Imports	11	151
Imports NRI, Sale of Duty Free Shops	6	6
Imports under Foreign Economic Assistance	42	165
Land borne Imports with Afghanistan	10	10
PIA & PNSC	9	3
Capital Equipment	0	0
Cost of Imports (Ex. Cos.)	0	0
Refund & Rebate	-11	-4
Import from EPZ	0	0
(A) Import General Merchandise (I-II+III)	2,793	2,902
(B) Other Import under BPM5*	33	14
(C) Import of Goods (A+B)	2,826	2,916
(D) Import of Services	601	618
(E) Import of Goods & Services (C+D)	3,427	3,535

* See "Introduction" for details:

Table 1(b) : Key Indicators of Import of Goods and Services (Million US\$)

April 2011	3,427
March 2011	3,948
% Change during April 2011 over March 2011	-13.2
April 2010	3,535
% Change during April 2011 over April 2010	-3.0
July-April 2010-11	34,865
July-April 2009-10	31,137
% Change during July-April 2010-11 over July-April 2009-10	12.0
Monthly average during July-April 2010-11	3,486
Monthly average during July-April 2009-10	3,114
FY10	38,128
FY09	39,234
% Change during FY10 over FY09	-2.8
Monthly average during FY10	3,177
Monthly average during FY09	3,270

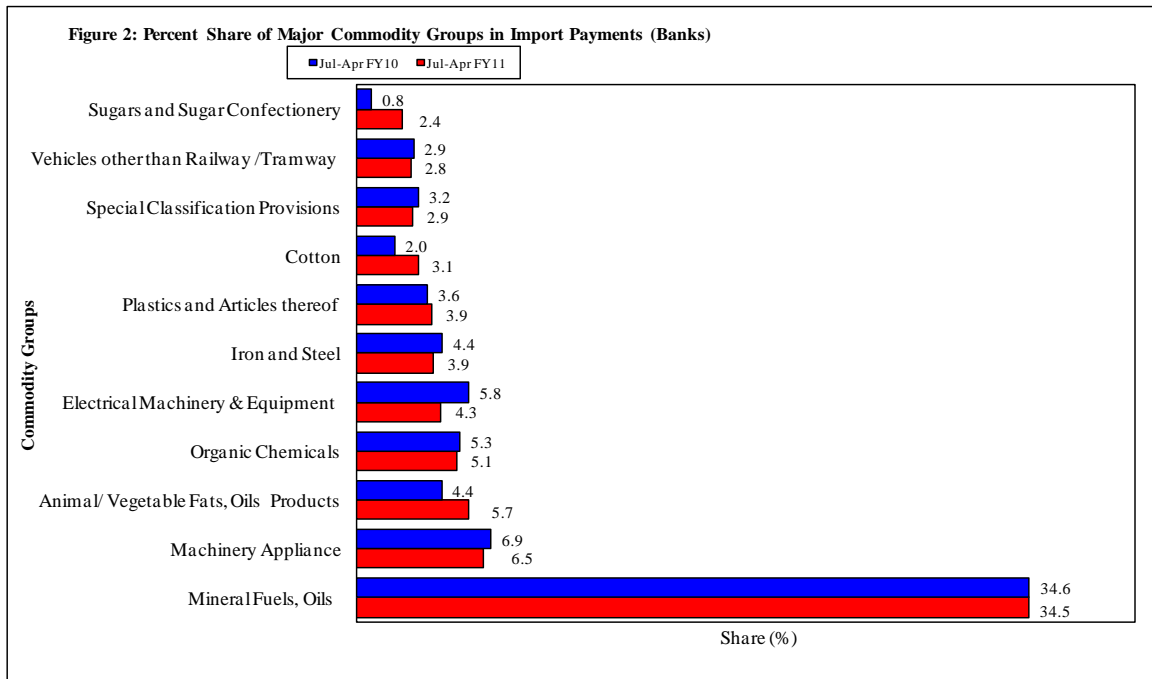
Figure 1. Import During Jul-Apr



*The data is import of goods based on Balance of Payments Manual 5 (BPM 5).

Table 2: Import Payments by Major Groups of Goods & Services (Amount in Million)

Goods/ Services	April			July-April		% Change
	2011	2011	2010	2010-11	2009-10	
	Pak Rs.	US \$				
Goods						
I. Import Payments (Banks)	250,670	2,962	2,796	29,507	25,331	16.5
Mineral Fuels, Oils and Their Distillation Product	87,003	1,028	917	10,193	8,759	16.4
Nuclear Reactors, Boilers, Machinery and Appliance	13,514	160	187	1,930	1,745	10.6
Animal or Vegetable Fats, Oils & Cleavage Products	15,612	184	109	1,688	1,104	53.0
Organic Chemicals	14,242	168	171	1,517	1,344	12.9
Electrical Machinery & Equipment and Parts thereof	12,163	144	123	1,283	1,460	-12.1
Iron and Steel	9,976	118	173	1,163	1,117	4.1
Plastics and Articles thereof	10,466	124	94	1,138	920	23.6
Cotton	6,372	75	98	929	494	88.1
Special Classification Provisions	3,972	47	60	850	800	6.2
Vehicles other than Railway /Tramway Rolling Stock	6,636	78	84	819	740	10.7
Sugars and Sugar Confectionery	268	3	46	700	193	261.7
Oil Seeds and Oleaginous Fruit	3,415	40	54	506	440	15.0
Man-Made Staple Fibers	5,827	69	32	496	302	64.2
Ships, Boats and Floating Structures	6,604	78	99	440	345	27.6
Man-Made Filaments	4,295	51	33	434	278	55.8
Edible Vegetables	2,885	34	38	433	253	71.4
Miscellaneous Chemical Products	3,872	46	41	431	422	2.0
Fertilizers	2,157	25	29	407	753	-46.0
All Others	41,390	489	406	4,150	3,860	7.5
II. Freight & Insurance	20,054	237	224	2,361	2,026	16.5
III. Other Import Unaccounted by Banks	5,721	68	330	1,382	1,946	-29.0
(A) Import General Merchandise (I-II+III)	236,337	2,793	2,902	28,529	25,250	13.0
(B) Other Import under BPM5*	2,818	33	14	282	209	34.5
(C) Import of Goods (A+B)	239,155	2,826	2,916	28,810	25,459	13.2
Services						
Transportation	26,372	311	327	3,223	2,892	11.5
Travel	7,890	93	82	792	746	6.2
Communication Services	1,007	12	11	144	129	12.1
Construction Services	205	2	2	22	27	-16.6
Insurance Services	899	11	11	128	126	1.5
Financial Services	948	11	12	93	79	17.3
Computer & Information Services	1,073	13	15	132	136	-2.8
Royalties & License fees	772	9	13	94	91	3.8
Other Business Services	8,066	95	92	918	915	0.3
Personal, cultural & recreational Services	3	0	0	7	18	-60.1
Government Services	3,701	44	53	500	519	-3.6
(D) Total Import of Services	50,937	601	618	6,054	5,677	6.6
Total Import of Goods & Services (C+D)	290,092	3,427	3,535	34,865	31,137	12.0



Note: - The share is based on the share of commodities in Import Payments through Banks

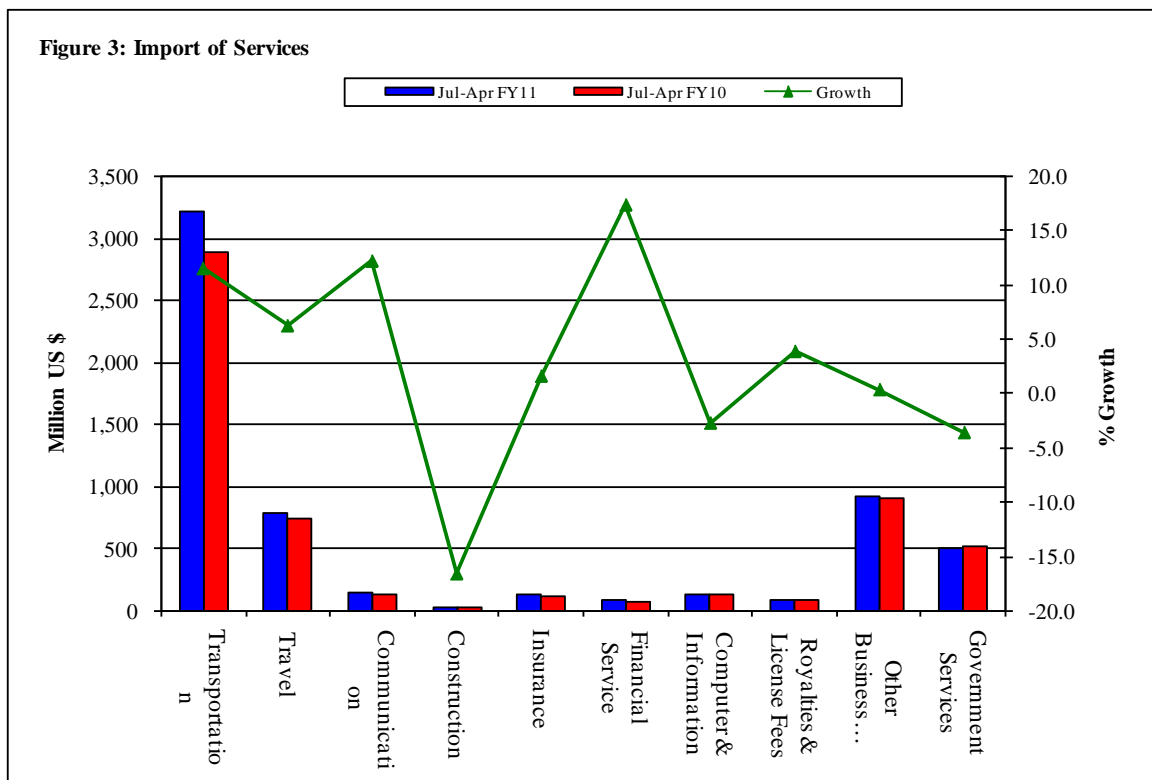
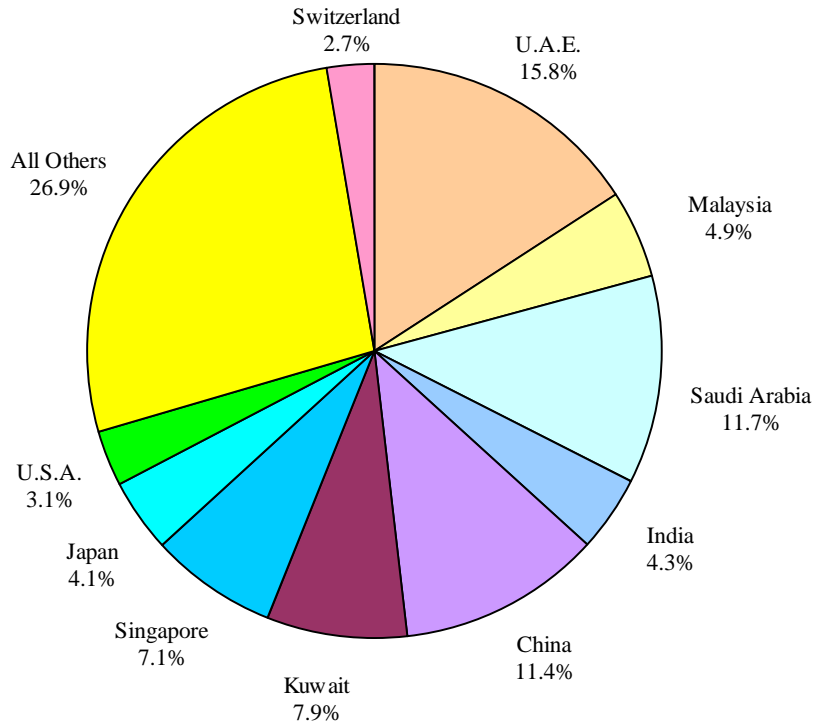


Table 3: Import of Goods & Services by Major Countries (Amount in Million)

Country	April			July- April		% Change
	2011	2011	2010	2010-11	2009-10	
	Pak Rs.	US \$				
Goods						
I. Import Payments (Banks)	250,670	2,962	2,796	29,507	25,331	16.5
U.A.E.	37,796	447	381	4,673	3,902	19.8
Saudi Arabia	27,907	330	323	3,453	2,869	20.4
China	28,628	338	253	3,364	2,629	28.0
Kuwait	29,974	354	204	2,331	1,700	37.1
Singapore	17,737	210	210	2,109	1,669	26.4
Malaysia	13,696	162	108	1,459	1,053	38.5
India	7,042	83	143	1,261	877	43.9
Japan	9,395	111	103	1,216	934	30.3
U.S.A.	8,401	99	102	924	778	18.6
Switzerland	2,901	34	44	787	791	-0.6
Germany	6,155	73	86	767	908	-15.6
U.K.	5,834	69	55	561	578	-2.9
South Korea	5,454	64	56	460	420	9.5
Thailand	3,001	35	25	429	295	45.3
Hong Kong	3,652	43	25	393	244	61.3
All Others	43,098	509	679	5,320	5,684	-6.4
II. Freight & Insurance	20,054	237	224	2,361	2,026	16.5
III. Other Import Unaccounted by Banks	5,721	68	330	1,382	1,946	-29.0
(A) Import General Merchandise (I-II+III)	236,337	2,793	2,902	28,529	25,250	13.0
(B) Other Import under BPM5*	2,818	33	14	282	209	34.5
(C) Import of Goods (A+B)	239,155	2,826	2,916	28,810	25,459	13.2
Services						
U.S.A.	4,961	59	61	767	795	-3.5
U.A.E.	5,474	65	71	703	645	8.9
China	5,911	70	48	457	411	11.2
Saudi Arabia	3,246	38	45	453	383	18.1
U.K.	4,154	49	42	429	401	7.1
Singapore	2,137	25	24	258	228	13.2
Kuwait	2,617	31	19	204	151	35.3
Japan	1,080	13	14	157	138	13.4
Malaysia	1,266	15	11	146	108	34.8
Germany	1,239	15	13	137	167	-17.7
India	597	7	12	105	75	40.9
Switzerland	532	6	9	104	90	16.1
Thailand	707	8	7	91	76	19.4
Hongkong	796	9	6	84	53	57.1
France	421	5	8	80	87	-8.3
All Other	15,799	186	227	1,880	1,870	0.6
(D) Total Import of Services	50,937	601	618	6,054	5,677	6.6
Total Import of Goods & Services (C+D)	290,092	3,427	3,535	34,865	31,137	12.0

Figure 4: % Share of Major Countries in Import Payments (Banks) During Jul-Apr FY11



Note: % Share is based on Import Payments through Banks

Figure 5: % Share of Major Countries in Import of Services During Jul-Apr FY11

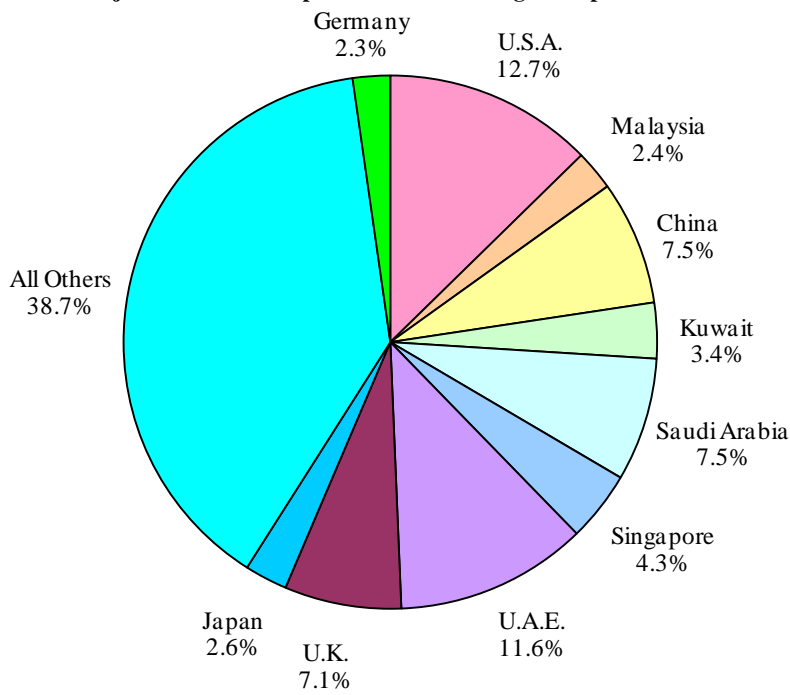


Figure 6: Annual Import of Goods & Services from FY01 to FY10

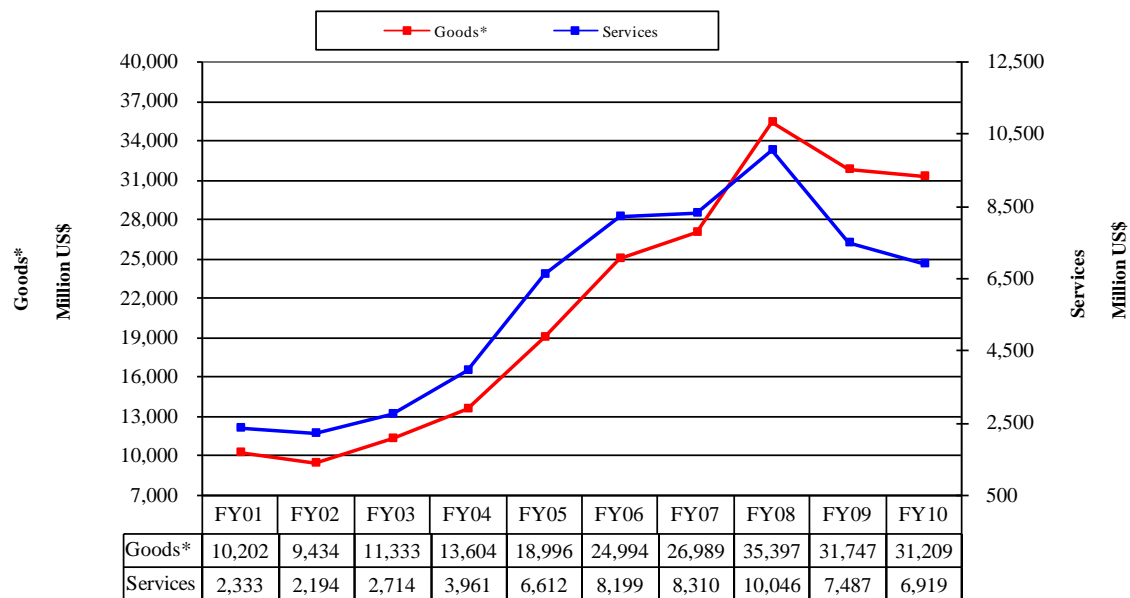


Figure 7: Monthly Imports of Goods & Services



* The data before FY05 is import general merchandise based on Balance of Payments Manual 4 (BPM 4) and onward on Balance of Payments Manual 5 (BPM 5).

Table 4: Annual, Quarterly & Monthly Import of Goods** (Million US\$)

Period	FY02	FY03	FY04	FY05	FY06	FY07	FY08	FY09	FY10	FY11
Annual	9,434	11,333	13,604	18,996	24,994	26,989	35,397	31,747	31,209	28,810*
Growth (%)	-7.5	20.1	20.0	39.6	31.6	8.0	31.2	-10.3	-1.7	
<u>Quarter-wise</u>										
Quarter-I	2,412 (25.6)	2,769 (24.4)	3,014 (22.2)	4,175 (22.0)	5,925 (23.7)	6,933 (25.7)	6,940 (19.6)	10,230 (32.2)	7,485 (24.0)	8,233
Quarter-II	2,216 (23.5)	2,853 (25.2)	3,204 (23.6)	5,047 (26.6)	6,074 (24.3)	6,768 (25.1)	8,548 (24.1)	8,077 (25.4)	7,691 (24.6)	8,613
Quarter-III	2,233 (23.7)	2,744 (24.2)	3,602 (26.5)	4,801 (25.3)	6,261 (25.1)	6,454 (23.9)	9,765 (27.6)	6,275 (19.8)	7,367 (23.6)	9,139
Quarter-IV	2,573 (27.3)	2,967 (26.2)	3,784 (27.8)	4,973 (26.2)	6,734 (26.9)	6,834 (25.3)	10,144 (28.7)	7,165 (22.6)	8,666 (27.8)	
<u>Month-wise</u>										
July	778 (8.2)	943 (8.3)	1,020 (7.5)	1,440 (7.6)	1,772 (7.1)	2,418 (9.0)	2,411 (6.8)	3,373 (10.6)	2,818 (9.0)	2,923
August	850 (9.0)	974 (8.6)	930 (6.8)	1,311 (6.9)	2,087 (8.4)	2,308 (8.6)	2,259 (6.4)	3,162 (10.0)	2,189 (7.0)	2,929
September	784 (8.3)	852 (7.5)	1,064 (7.8)	1,424 (7.5)	2,066 (8.3)	2,207 (8.2)	2,269 (6.4)	3,694 (11.6)	2,478 (7.9)	2,381
October	757 (8.0)	899 (7.9)	1,057 (7.8)	1,616 (8.5)	2,055 (8.2)	2,205 (8.2)	2,604 (7.4)	3,243 (10.2)	2,756 (8.8)	2,615
November	735 (7.8)	920 (8.1)	876 (6.4)	1,745 (9.2)	2,059 (8.2)	2,161 (8.0)	2,963 (8.4)	2,233 (7.0)	2,194 (7.0)	2,807
December	724 (7.7)	1,034 (9.1)	1,271 (9.3)	1,686 (8.9)	1,960 (7.8)	2,402 (8.9)	2,980 (8.4)	2,601 (8.2)	2,741 (8.8)	3,191
January	796 (8.4)	924 (8.2)	1,168 (8.6)	1,427 (7.5)	2,070 (8.3)	2,105 (7.8)	3,329 (9.4)	2,140 (6.7)	2,536 (8.1)	2,796
February	721 (7.6)	827 (7.3)	1,212 (8.9)	1,591 (8.4)	1,886 (7.5)	2,226 (8.2)	2,913 (8.2)	1,884 (5.9)	2,345 (7.5)	3,065
March	716 (7.6)	993 (8.8)	1,222 (9.0)	1,783 (9.4)	2,305 (9.2)	2,123 (7.9)	3,523 (10.0)	2,251 (7.1)	2,486 (8.0)	3,278
April	786 (8.3)	979 (8.6)	1,230 (9.0)	1,508 (7.9)	1,682 (6.7)	2,185 (8.1)	3,391 (9.6)	2,370 (7.5)	2,916 (9.3)	2,826
May	834 (8.8)	959 (8.5)	1,166 (8.6)	1,741 (9.2)	2,361 (9.4)	2,214 (8.2)	3,246 (9.2)	2,002 (6.3)	2,638 (8.5)	
June	953 (10.1)	1,029 (9.1)	1,388 (10.2)	1,724 (9.1)	2,691 (10.8)	2,435 (9.0)	3,507 (9.9)	2,793 (8.8)	3,112 (10.0)	

Notes: 1. Figures in parentheses are percentage to annual import payments of the respective years

2. Due to rounding off separate items, totals may show minor differences

* The total include figures for July to current month

** The data before FY05 is import general merchandise based on Balance of Payments Manual 4 (BPM 4) and onward on Balance of Payments Manual 5 (BPM 5).

Table 5: Annual, Quarterly & Monthly Import of Services (Million US\$)

Period	FY02	FY03	FY04	FY05	FY06	FY07	FY08	FY09	FY10	FY11
Annual	2,194	2,714	3,961	6,612	8,199	8,310	10,046	7,487	6,919	6,054*
Growth (%)	-6.0	23.7	45.9	66.9	24.0	1.4	20.9	-25.5	-7.6	
<u>Quarter-wise</u>										
Quarter-I	586 (26.7)	579 (21.3)	799 (20.2)	1,449 (21.9)	1,953 (23.8)	2,039 (24.5)	2,194 (21.8)	2,392 (31.9)	1,585 (22.9)	1,704
Quarter-II	531 (24.2)	586 (21.6)	945 (23.9)	1,669 (25.2)	2,061 (25.1)	2,193 (26.4)	2,548 (25.4)	2,021 (27.0)	1,892 (27.3)	1,943
Quarter-III	552 (25.2)	649 (23.9)	1,097 (27.7)	1,764 (26.7)	2,061 (25.1)	2,014 (24.2)	2,569 (25.6)	1,389 (18.6)	1,582 (22.9)	1,806
Quarter-IV	525 (23.9)	900 (33.2)	1,120 (28.3)	1,730 (26.2)	2,124 (25.9)	2,064 (24.8)	2,735 (27.2)	1,685 (22.5)	1,860 (26.9)	
<u>Month-wise</u>										
July	178 (8.1)	181 (6.7)	305 (7.7)	432 (6.5)	573 (7.0)	735 (8.8)	755 (7.5)	743 (9.9)	568 (8.2)	560
August	189 (8.6)	184 (6.8)	207 (5.2)	473 (7.2)	735 (9.0)	619 (7.4)	757 (7.5)	816 (10.9)	489 (7.1)	556
September	219 (10.0)	214 (7.9)	287 (7.2)	544 (8.2)	645 (7.9)	685 (8.2)	682 (6.8)	833 (11.1)	528 (7.6)	588
October	190 (8.7)	189 (7.0)	327 (8.3)	525 (7.9)	626 (7.6)	645 (7.8)	782 (7.8)	839 (11.2)	691 (10.0)	696
November	180 (8.2)	195 (7.2)	238 (6.0)	489 (7.4)	674 (8.2)	782 (9.4)	963 (9.6)	577 (7.7)	562 (8.1)	590
December	161 (7.3)	202 (7.4)	380 (9.6)	655 (9.9)	761 (9.3)	766 (9.2)	803 (8.0)	605 (8.1)	639 (9.2)	657
January	159 (7.2)	248 (9.1)	378 (9.5)	539 (8.2)	672 (8.2)	683 (8.2)	894 (8.9)	448 (6.0)	500 (7.2)	577
February	166 (7.6)	185 (6.8)	339 (8.6)	561 (8.5)	622 (7.6)	633 (7.6)	751 (7.5)	458 (6.1)	495 (7.2)	559
March	227 (10.3)	216 (8.0)	380 (9.6)	664 (10.0)	767 (9.4)	698 (8.4)	924 (9.2)	483 (6.5)	587 (8.5)	670
April	166 (7.6)	331 (12.2)	379 (9.6)	610 (9.2)	617 (7.5)	680 (8.2)	999 (9.9)	542 (7.2)	618 (8.9)	601
May	147 (6.7)	276 (10.2)	355 (9.0)	582 (8.8)	744 (9.1)	657 (7.9)	797 (7.9)	523 (7.0)	582 (8.4)	
June	212 (9.7)	293 (10.8)	386 (9.7)	538 (8.1)	763 (9.3)	727 (8.7)	939 (9.3)	620 (8.3)	660 (9.5)	

Notes: 1. Figures in parentheses are percentage to annual import payments of the respective years

2. Due to rounding off separate items, totals may show minor differences

* The total include figures for July to current month