

## S U M M A R Y

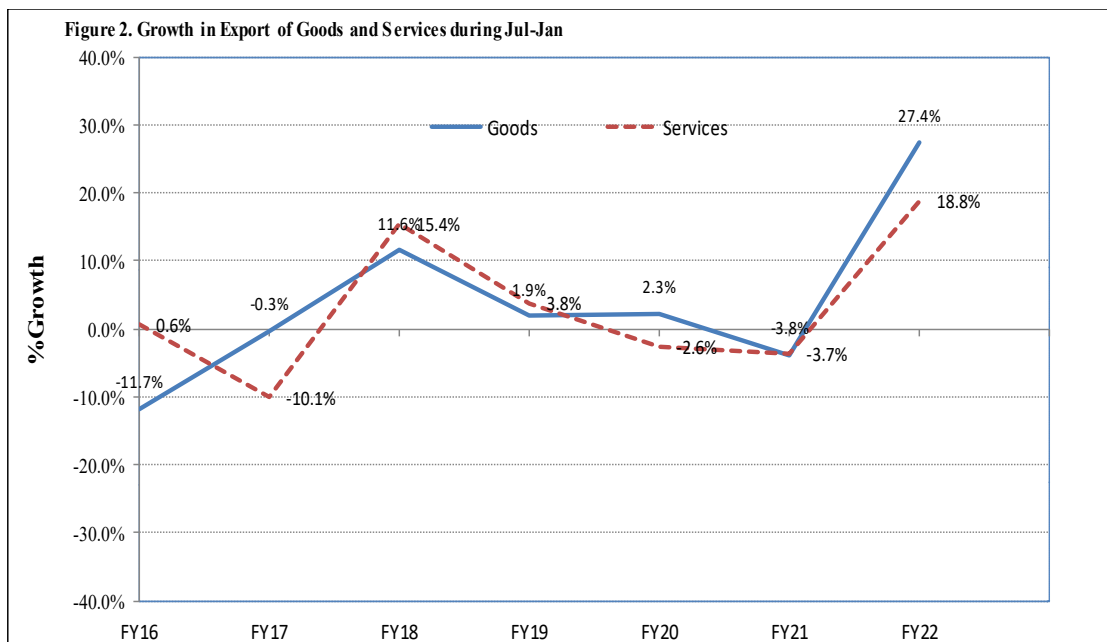
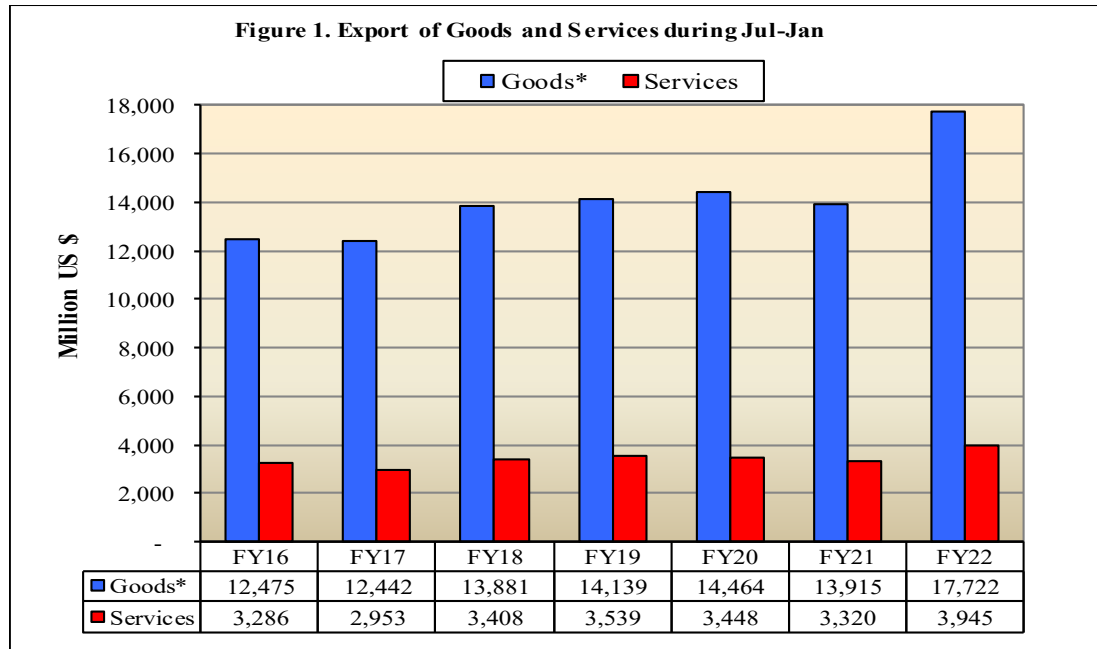
**Table 1(a) : Monthly Export of Goods and Services** (Million US \$)

Items	January	
	2022	2021
I. Export receipts (banks)	2,469	2,098
II. Freight on Exports	37	14
III. Other Exports unaccounted for by banks	55	16
Land borne Exports	57	0
Export of Samples	6	5
Outstanding Exports Bills	-25	2
Other Exports	17	9
<b>(A) Export of goods (I-II+III)</b>	<b>2,487</b>	<b>2,100</b>
<b>(B) Export of services</b>	<b>521</b>	<b>480</b>
<b>(C) Export of goods &amp; services (A+B)</b>	<b>3,008</b>	<b>2,580</b>

**Table 1(b) : Key Indicators of Export of Goods and Services**

Period	Goods				Services			
	Amount in Millions USD	Share Percent	Growth Percent		Amount in Millions USD	Share Percent	Growth Percent	
			MOM	YOY			MOM	YOY
Jan-FY22	2,487	82.7	-14.9	18.4	521	17.3	-23.7	8.5
Jan-FY21	2,100	81.4	-6.8	2.1	480	18.6	-23.4	-8.4
Jan-FY20	2,056	79.7	-2.6	-9.6	524	20.3	-8.4	1.0
FY21	25,630	81.3		13.7	5,882	18.7		8.2
FY20	22,536	80.6		-7.1	5,437	19.4		-8.9
FY19	24,257	80.3		-2.1	5,966	19.7		2.0

Note: This publication is based on provisional data.



\*The data of export of goods is based on Balance of Payments and International Investment Position Manual (BPM6).

**Table 2: Export Receipts by Major Groups of Goods and Services** (Amount in Millions)

Goods/ Services	JANUARY			JULY- JANUARY		
	2022	2022	2021	FY22	FY21	%
	Pak Rs.			US \$		Change
<b>Goods</b>						
<b>I. Export Receipts (Banks)</b>	<b>435,289</b>	<b>2,469</b>	<b>2,098</b>	<b>17,284</b>	<b>13,510</b>	<b>27.9</b>
Other Made-up Textile Articles; Sets, Worn Clothin	78,439	445	412	3,256	2,564	27.0
Articles of Apparel & Clothing Accessories Knit/Cr	64,741	367	300	2,729	1,949	40.0
Cotton	51,437	292	218	1,999	1,518	31.7
Articles of Apparel/Clothing Acces not Knited /Cro	51,397	292	233	1,992	1,490	33.7
Cereals	40,634	230	241	1,437	1,212	18.6
Copper and Articles thereof	14,513	82	46	497	304	63.8
Articles of Leather, Travel Goods and Handbags etc	9,296	53	52	434	383	13.2
Salt, Sulfur, Earth's and Stones, Lime and Stone	7,649	43	45	312	283	10.0
Optical, Photographic, Measuring and Medical Inst.	6,600	37	41	289	274	5.6
Beverages, Spirits and Vinegar	5,925	34	14	239	154	55.3
Toys, Games and Sports Requisites; Parts & Acces.	5,778	33	24	239	214	11.8
Edible Fruits and Nuts	5,749	33	57	229	239	-3.9
Man-Made Staple Fibers	5,192	29	25	226	178	27.0
Plastics and Articles thereof	6,698	38	16	225	167	35.1
Ores Slag and Ash	6,370	36	35	220	161	36.3
Fish and Crustaceans	6,109	35	24	219	216	1.5
Oil Seeds and Oleaginous Fruit	4,565	26	15	202	69	191.9
Mineral Fuels, Oils and Their Distillation Product	7,261	41	7	192	114	68.8
All others	56,937	323	293	2,346	2,021	16.1
<b>II. Freight on Exports</b>	<b>6,467</b>	<b>37</b>	<b>14</b>	<b>242</b>	<b>147</b>	<b>64.8</b>
<b>III. Other Exports Unaccounted by Banks</b>	<b>9,665</b>	<b>55</b>	<b>16</b>	<b>681</b>	<b>552</b>	<b>23.4</b>
<b>(A) Export General Merchandise (I-II+III)</b>	<b>438,487</b>	<b>2,487</b>	<b>2,100</b>	<b>17,722</b>	<b>13,915</b>	<b>27.4</b>
<b>Services</b>						
Telecommunications, computer, and information services	32,619	185	162	1,487	1,121	32.6
Other business services	20,627	117	117	909	810	12.2
Government goods and services n.i.e.	17,453	99	83	626	594	5.4
Transport	11,638	66	43	434	352	23.3
Travel	5,822	33	53	315	277	13.7
Construction	707	4	5	73	70	4.3
Financial services	1,763	10	10	58	54	7.3
Insurance and pension services	886	5	4	25	27	-7.2
Charges for the use of intellectual property n.i.e.	178	1	1	8	8	-0.3
Personal, cultural, and recreational services	175	1	1	7	6	15.8
Maintenance and repair services n.i.e.	5	0	1	3	1	180.5
<b>(B) Export of Services</b>	<b>91,874</b>	<b>521</b>	<b>480</b>	<b>3,945</b>	<b>3,320</b>	<b>18.8</b>
<b>(C) Export of Goods &amp; Services (A+B)</b>	<b>530,361</b>	<b>3,008</b>	<b>2,580</b>	<b>21,667</b>	<b>17,235</b>	<b>25.7</b>

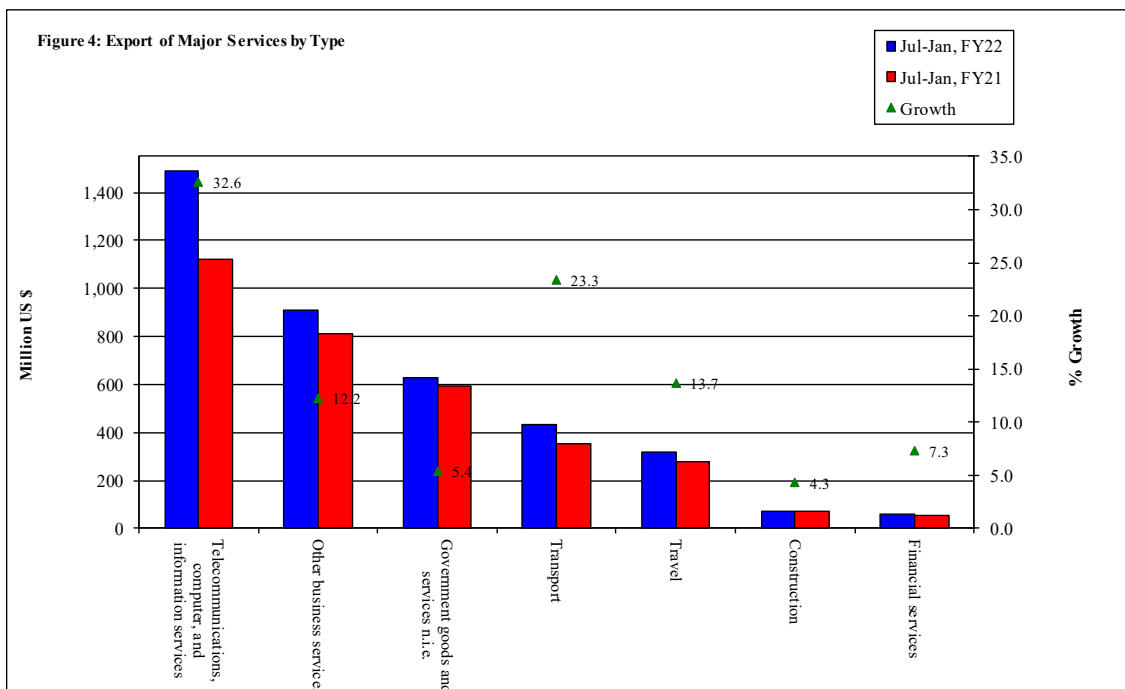
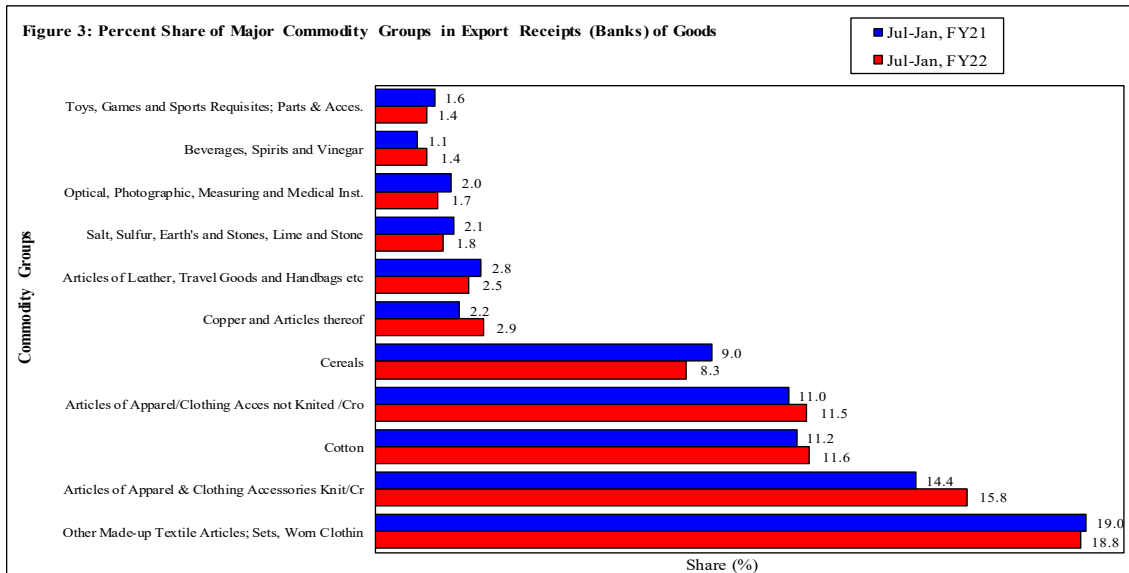
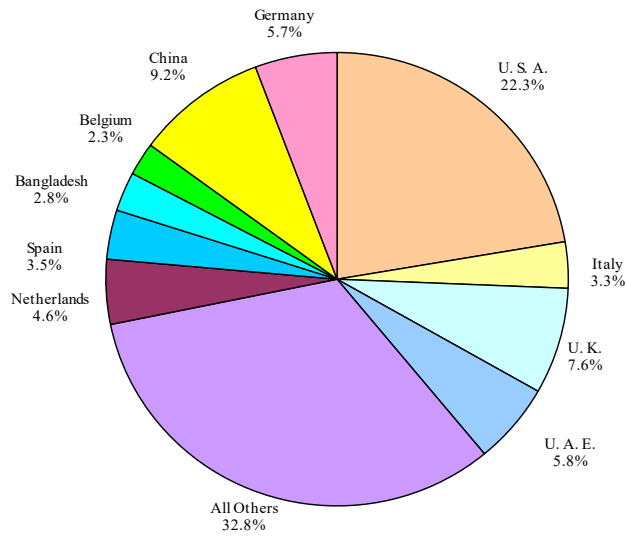


Table 3: Export Receipts by Major Countries

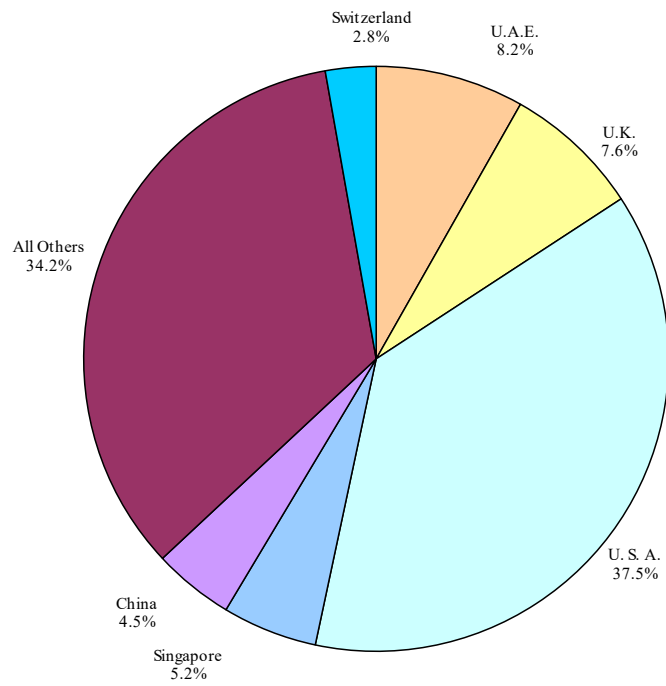
(Amount in Millions)

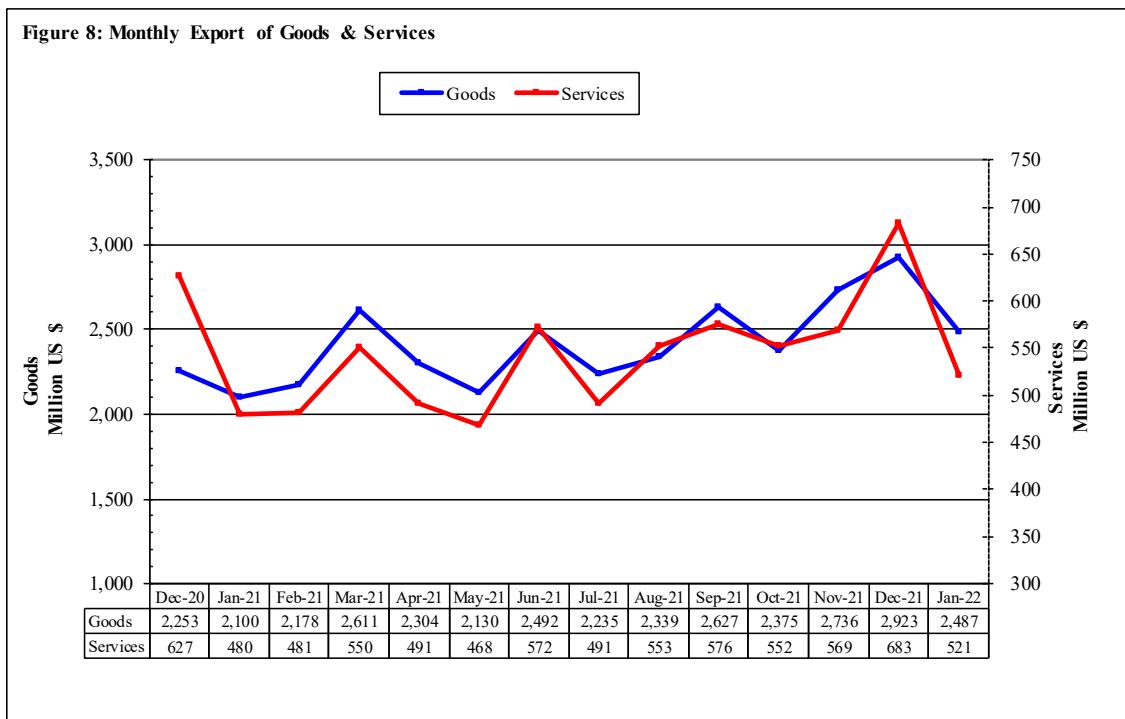
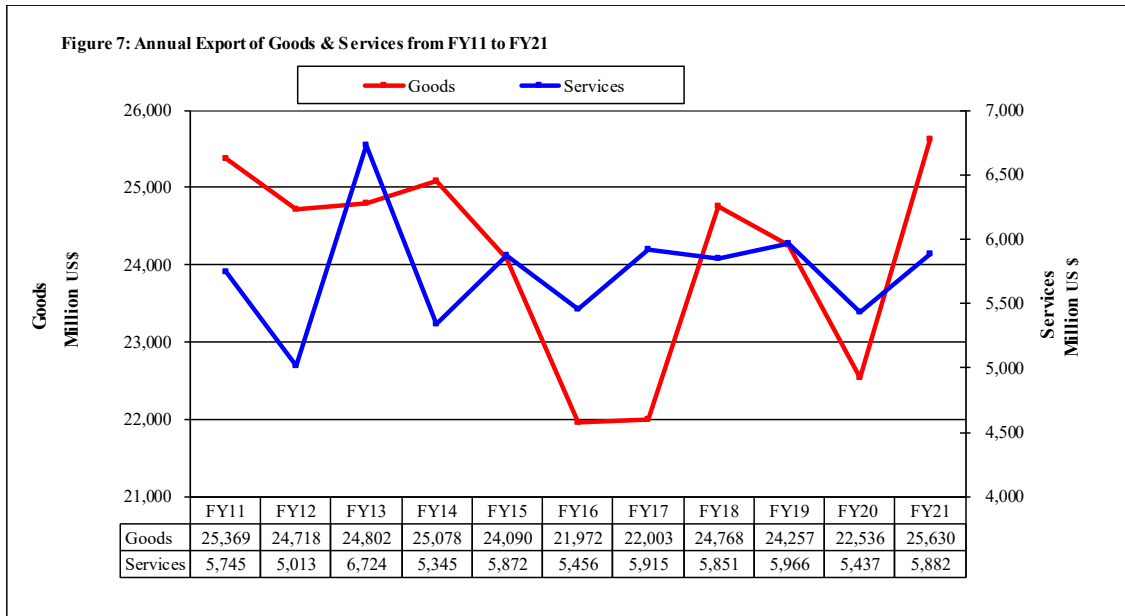
Country	JANUARY			JULY- JANUARY		
	2022	2022	2021	FY22	FY21	%
	Pak Rs.	US \$				Change
<b>I. Export Receipts (Banks)</b>	<b>435,289</b>	<b>2,469</b>	<b>2,098</b>	<b>17,284</b>	<b>13,510</b>	<b>27.9</b>
U. S. A.	95,006	539	400	3,863	2,677	44.3
China	45,135	256	189	1,589	1,027	54.7
U. K.	28,833	164	179	1,309	1,135	15.3
U. A. E.	22,639	128	126	998	824	21.1
Germany	22,577	128	124	992	873	13.6
Netherlands	20,669	117	102	800	618	29.4
Spain	17,264	98	77	606	439	38.0
Italy	14,312	81	60	570	415	37.3
Bangladesh	14,787	84	49	483	323	49.5
Belgium	7,621	43	47	405	309	30.9
France	7,346	42	43	298	256	16.6
Afghanistan	3,022	17	93	258	544	-52.6
Malaysia	7,412	42	21	231	106	117.6
Saudi Arabia	5,694	32	32	228	276	-17.4
Canada	4,998	28	24	223	167	33.4
All Others	117,973	669	532	4,432	3,520	25.9
<b>II. Freight on Exports</b>	<b>6,467</b>	<b>37</b>	<b>14</b>	<b>242</b>	<b>147</b>	<b>64.8</b>
<b>III. Other Exports Unaccounted by Banks</b>	<b>9,665</b>	<b>55</b>	<b>16</b>	<b>681</b>	<b>552</b>	<b>23.4</b>
<b>(A) Export of Goods (I-II+III)</b>	<b>438,487</b>	<b>2,487</b>	<b>2,100</b>	<b>17,722</b>	<b>13,915</b>	<b>27.4</b>
<b>Services</b>						
U. S. A.	28,346	161	173	1,481	1,238	19.6
U.A.E.	7,737	44	35	324	272	18.9
U.K.	8,100	46	30	299	227	31.9
Singapore	5,265	30	23	207	140	47.4
China	3,597	20	24	176	175	0.6
Switzerland	1,904	11	10	110	72	52.4
Germany	2,350	13	13	97	90	7.5
Saudi Arabia	2,272	13	11	96	78	22.2
W.H.O.	3,974	23	15	82	43	90.1
Hongkong	1,545	9	10	65	79	-17.2
France	1,338	8	6	62	45	38.8
Bahrain	2,214	13	9	59	43	38.0
Canada	1,685	10	6	56	43	28.3
Ireland	2,353	13	7	49	37	31.2
Malaysia	867	5	5	37	29	30.0
All Others	18,328	104	103	745	708	5.2
<b>(B) Export of Services</b>	<b>91,874</b>	<b>521</b>	<b>480</b>	<b>3,945</b>	<b>3,320</b>	<b>18.8</b>
<b>(C) Export of Goods &amp; Services (A+B)</b>	<b>530,361</b>	<b>3,008</b>	<b>2,580</b>	<b>21,667</b>	<b>17,235</b>	<b>25.7</b>

**Figure 5: Percent Share of Major Countries in Export Receipts (Banks) of Goods during Jul-Jan, FY22**



**Figure 6: Percent Share of Major Countries in Export of Services during Jul-Jan, FY22**





**Table 4: Annual, Quarterly & Monthly Export of Goods** ( Million US\$)

Period	FY13	FY14	FY15	FY16	FY17	FY18	FY19	FY20	FY21	FY22
Annual	24,802	25,078	24,090	21,972	22,003	24,768	24,257	22,536	25,630	
Growth (%)	0.3	1.1	-3.9	-8.8	0.1	12.6	-2.1	-7.1	13.7	
<b>Quarter-wise</b>										
Quarter-I	6,151 (24.8)	6,257 (25.0)	5,960 (24.0)	5,318 (24.2)	5,054 (23.0)	5,650 (22.8)	5,893 (24.3)	5,994 (26.6)	5,354 (20.9)	7,201
Quarter-II	6,003 (24.2)	6,210 (24.8)	6,206 (25.0)	5,465 (24.9)	5,577 (25.3)	6,141 (24.8)	5,972 (24.6)	6,414 (28.5)	6,461 (25.2)	8,034
Quarter-III	6,192 (25.0)	6,279 (25.0)	5,866 (23.7)	5,545 (25.2)	5,683 (25.8)	6,463 (26.1)	6,186 (25.5)	5,873 (26.1)	6,889 (26.9)	
Quarter-IV	6,456 (26.0)	6,332 (25.2)	6,058 (24.4)	5,644 (25.7)	5,689 (25.9)	6,514 (26.3)	6,206 (25.6)	4,255 (18.9)	6,926 (27.0)	
<b>Month-wise</b>										
July	2,020 (8.1)	2,194 (8.7)	1,919 (8.0)	1,759 (8.0)	1,508 (6.9)	1,817 (7.3)	2,013 (8.3)	2,217 (9.8)	1,885 (7.4)	2,235
August	2,030 (8.2)	2,009 (8.0)	1,880 (7.8)	1,738 (7.9)	1,857 (8.4)	2,090 (8.4)	2,075 (8.6)	1,896 (8.4)	1,514 (5.9)	2,339
September	2,101 (8.5)	2,054 (8.2)	2,161 (8.7)	1,821 (7.3)	1,689 (7.7)	1,743 (7.0)	1,805 (7.4)	1,881 (8.3)	1,955 (7.6)	2,627
October	2,117 (8.5)	2,063 (8.3)	2,088 (8.4)	1,778 (7.2)	1,826 (8.3)	1,960 (7.9)	2,061 (8.5)	2,191 (9.7)	1,969 (7.7)	2,375
November	2,027 (8.2)	1,820 (7.3)	1,861 (7.5)	1,740 (7.0)	1,860 (8.5)	2,173 (8.8)	1,898 (7.8)	2,113 (9.4)	2,239 (8.7)	2,736
December	1,859 (7.5)	2,327 (9.4)	2,257 (9.1)	1,947 (7.9)	1,891 (8.6)	2,008 (8.1)	2,013 (8.3)	2,110 (9.4)	2,253 (8.8)	2,923
January	2,085 (8.4)	2,129 (8.6)	1,964 (7.9)	1,692 (6.8)	1,811 (8.2)	2,090 (8.4)	2,274 (9.4)	2,056 (9.1)	2,100 (8.2)	2,487
February	1,930 (7.8)	2,058 (8.3)	1,853 (7.5)	1,864 (7.5)	1,797 (8.2)	2,057 (8.3)	1,875 (7.7)	1,996 (8.9)	2,178 (8.5)	
March	2,177 (8.8)	2,092 (8.4)	2,049 (8.3)	1,989 (8.0)	2,075 (9.4)	2,316 (9.4)	2,037 (8.4)	1,821 (8.1)	2,611 (10.2)	
April	2,204 (8.9)	2,097 (8.5)	2,067 (8.3)	1,818 (7.3)	1,827 (8.3)	2,235 (9.0)	2,084 (8.6)	1,423 (6.3)	2,304 (9.0)	
May	2,258 (9.1)	2,133 (8.6)	1,880 (7.6)	1,959 (7.9)	1,978 (9.0)	2,265 (9.1)	2,323 (9.6)	1,259 (5.6)	2,130 (8.3)	
June	1,994 (8.0)	2,102 (8.5)	2,111 (8.5)	1,867 (7.5)	1,884 (8.6)	2,014 (8.1)	1,799 (7.4)	1,573 (7.0)	2,492 (9.7)	

Notes: 1. Figures in parentheses are percentages to annual Export Receipts of the respective years  
2. Due to rounding off, separate items, totals may show minor differences



**Table 5: Annual, Quarterly & Monthly Export of Services** (Million US\$)

Period	FY13	FY14	FY15	FY16	FY17	FY18	FY19	FY20	FY21	FY22
Annual	6,724	5,345	5,872	5,456	5,915	5,851	5,966	5,437	5,882	
Growth (%)	34.1	-20.5	9.9	-7.1	8.4	-1.1	2.0	-8.9	8.2	
<b><u>Quarter-wise</u></b>										
Quarter-I	2,173 (32.3)	995 (18.6)	1,743 (29.7)	1,767 (32.4)	1,227 (20.7)	1,390 (23.8)	1,471 (24.7)	1,342 (24.7)	1,276 (21.7)	1,620
Quarter-II	2,058 (30.6)	1,440 (26.9)	1,164 (19.8)	1,165 (21.4)	1,298 (21.9)	1,548 (26.5)	1,549 (26.0)	1,582 (29.1)	1,564 (26.6)	1,804
Quarter-III	1,201 (17.9)	1,396 (26.1)	1,841 (31.4)	1,152 (21.1)	1,990 (33.6)	1,456 (24.9)	1,546 (25.9)	1,421 (26.1)	1,511 (25.7)	
Quarter-IV	1,292 (19.2)	1,514 (28.3)	1,124 (19.1)	1,372 (25.1)	1,400 (23.7)	1,457 (24.9)	1,400 (23.5)	1,092 (20.1)	1,531 (26.0)	
<b><u>Month-wise</u></b>										
July	349 (5.2)	343 (6.4)	359 (6.1)	715 (13.1)	349 (5.9)	415 (7.1)	477 (8.0)	485 (8.9)	454 (7.7)	491
August	1,501 (22.3)	305 (5.7)	691 (11.8)	341 (6.3)	435 (7.4)	457 (7.8)	499 (8.4)	430 (7.9)	346 (5.9)	553
September	323 (4.8)	347 (6.5)	693 (11.8)	711 (13.0)	443 (7.5)	518 (8.9)	495 (8.3)	427 (7.9)	476 (8.1)	576
October	491 (7.3)	671 (12.6)	401 (6.8)	400 (7.3)	394 (6.7)	463 (7.9)	508 (8.5)	546 (10.0)	432 (7.3)	552
November	343 (5.1)	341 (6.4)	310 (5.3)	321 (5.9)	413 (7.0)	492 (8.4)	478 (8.0)	464 (8.5)	505 (8.6)	569
December	1,224 (18.2)	428 (8.0)	453 (7.7)	444 (8.1)	491 (8.3)	593 (10.1)	563 (9.4)	572 (10.5)	627 (10.7)	683
January	379 (5.6)	347 (6.5)	360 (6.1)	354 (6.5)	428 (7.2)	470 (8.0)	519 (8.7)	524 (9.6)	480 (8.2)	521
February	366 (5.4)	667 (12.5)	1,043 (17.8)	351 (6.4)	761 (12.9)	503 (8.6)	485 (8.1)	469 (8.6)	481 (8.2)	
March	456 (6.8)	382 (7.1)	438 (7.5)	447 (8.2)	801 (13.5)	483 (8.3)	542 (9.1)	428 (7.9)	550 (9.4)	
April	421 (6.3)	383 (7.2)	403 (6.9)	594 (10.9)	456 (7.7)	442 (7.6)	486 (8.1)	354 (6.5)	491 (8.3)	
May	386 (5.7)	758 (14.2)	318 (5.4)	361 (6.6)	449 (7.6)	506 (8.6)	468 (7.8)	361 (6.6)	468 (8.0)	
June	485 (7.2)	373 (7.0)	403 (6.9)	417 (7.6)	495 (8.4)	509 (8.7)	446 (7.5)	377 (6.9)	572 (9.7)	

Notes: 1. Figures in parentheses are percentages to annual Export Receipts of the respective years

2. Due to rounding off separate items, totals may show minor differences