

## SUMMARY

Table 1(a) : Monthly Export of Goods and Services

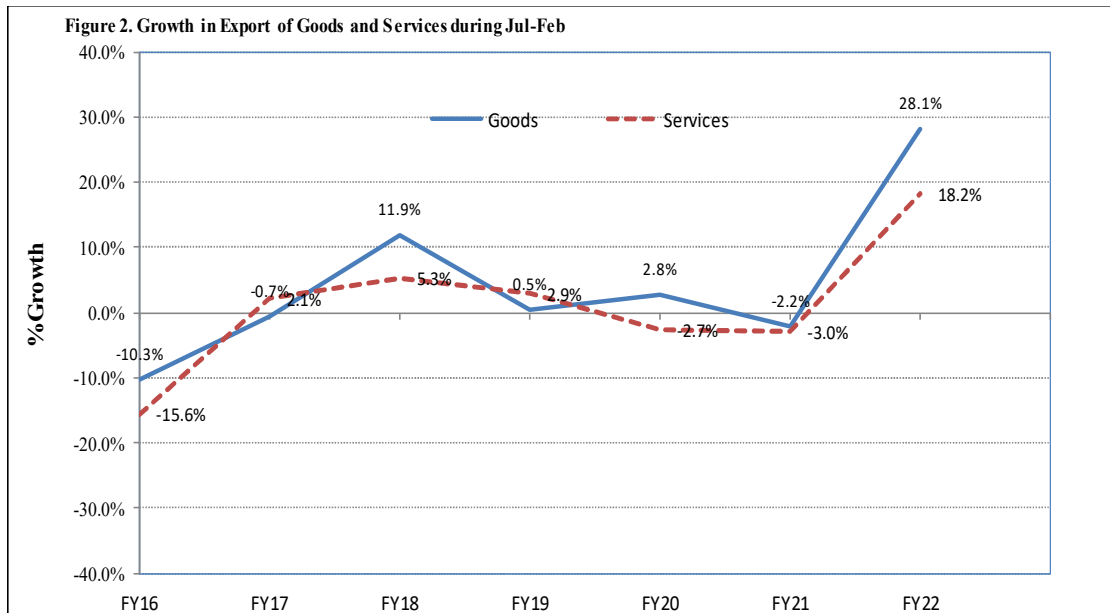
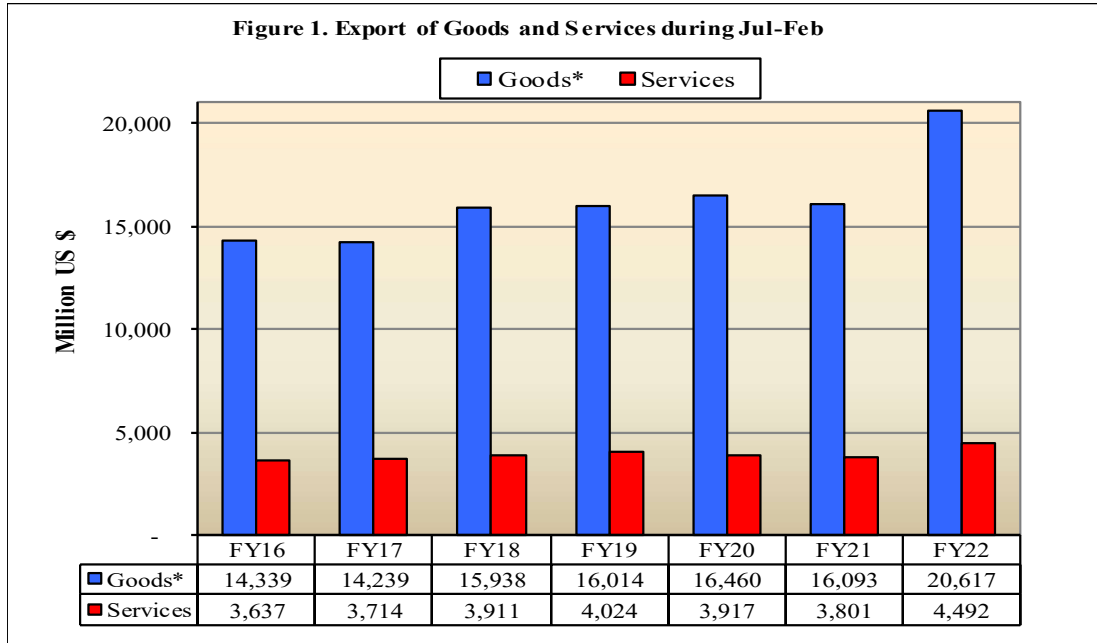
(Million US \$)

Items	February	
	2022	2021
I. Export receipts (banks)	2,562	2,057
II. Freight on Exports	31	12
III. Other Exports unaccounted for by banks	353	134
Land borne Exports	36	0
Export of Samples	13	6
Outstanding Exports Bills	282	118
Other Exports	23	9
<b>(A) Export of goods (I-II+III)</b>	<b>2,885</b>	<b>2,178</b>
<b>(B) Export of services</b>	<b>547</b>	<b>481</b>
<b>(C) Export of goods &amp; services (A+B)</b>	<b>3,432</b>	<b>2,659</b>

Table 1(b) : Key Indicators of Export of Goods and Services

Period	Goods				Services			
	Amount in Millions USD	Share Percent	Growth Percent		Amount in Millions USD	Share Percent	Growth Percent	
			MOM	YOY			MOM	YOY
Feb-FY22	2,885	84.1	15.5	32.5	547	15.9	5.0	13.7
Feb-FY21	2,178	81.9	3.7	9.1	481	18.1	0.2	2.6
Feb-FY20	1,996	81.0	-2.9	6.5	469	19.0	-10.5	-3.3
FY21	25,630	81.3		13.7	5,882	18.7		8.2
FY20	22,536	80.6		-7.1	5,437	19.4		-8.9
FY19	24,257	80.3		-2.1	5,966	19.7		2.0

Note: This publication is based on provisional data.



\*The data of export of goods is based on Balance of Payments and International Investment Position Manual (BPM6).

**Table 2: Export Receipts by Major Groups of Goods and Services** (Amount in Millions)

Goods/ Services	FEBRUARY			JULY- FEBRUARY		
	2022	2022	2021	FY22	FY21	%
	Pak Rs.			US \$		Change
<b>Goods</b>						
<b>I. Export Receipts (Banks)</b>	<b>449,601</b>	<b>2,562</b>	<b>2,057</b>	<b>19,848</b>	<b>15,567</b>	<b>27.5</b>
Other Made-up Textile Articles; Sets, Worn Clothin	78,452	447	392	3,703	2,957	25.2
Articles of Apparel & Clothing Accessories Knit/Cr	71,395	407	298	3,136	2,248	39.5
Articles of Apparel/Clothing Acces not Knited /Cro	51,515	294	233	2,286	1,724	32.5
Cotton	49,294	281	222	2,280	1,740	31.0
Cereals	45,826	261	182	1,699	1,395	21.7
Copper and Articles thereof	14,684	84	39	582	342	70.0
Articles of Leather, Travel Goods and Handbags etc	9,607	55	49	489	433	12.8
Salt, Sulfur, Earth's and Stones, Lime and Stone	7,807	44	38	356	320	11.3
Optical, Photographic, Measuring and Medical Inst.	6,789	39	35	328	311	5.6
Toys, Games and Sports Requisites; Parts & Acces.	5,402	31	28	270	242	11.5
Edible Fruits and Nuts	6,843	39	62	268	301	-10.8
Beverages, Spirits and Vinegar	4,912	28	37	267	191	39.9
Plastics and Articles thereof	6,727	38	21	264	188	40.1
Man-Made Staple Fibers	5,994	34	31	260	208	24.7
Mineral Fuels, Oils and Their Distillation Product	11,592	66	30	257	144	78.8
Ores Slag and Ash	6,096	35	17	255	179	42.6
Fish and Crustaceans	5,136	29	27	249	243	2.2
Oil Seeds and Oleaginous Fruit	2,410	14	16	215	85	153.9
All others	59,120	337	300	2,684	2,315	16.0
<b>II. Freight on Exports</b>	<b>5,366</b>	<b>31</b>	<b>12</b>	<b>267</b>	<b>159</b>	<b>67.5</b>
<b>III. Other Exports Unaccounted by Banks</b>	<b>62,030</b>	<b>353</b>	<b>134</b>	<b>1,036</b>	<b>685</b>	<b>51.2</b>
<b>(A) Export General Merchandise (I-II+III)</b>	<b>506,266</b>	<b>2,885</b>	<b>2,178</b>	<b>20,617</b>	<b>16,093</b>	<b>28.1</b>
<b>Services</b>						
Telecommunications, computer, and information services	35,271	201	179	1,689	1,300	29.9
Other business services	24,568	140	106	1,048	916	14.4
Government goods and services n.i.e.	14,218	81	75	705	669	5.4
Transport	12,280	70	49	508	401	26.7
Travel	7,897	45	50	360	327	10.1
Construction	175	1	6	74	76	-2.7
Financial services	1,055	6	11	62	65	-4.7
Insurance and pension services	176	1	2	26	29	-10.1
Charges for the use of intellectual property n.i.e.	177	1	1	9	9	-0.1
Personal, cultural, and recreational services	176	1	1	8	7	13.3
Maintenance and repair services n.i.e.	7	0	1	3	2	51.4
<b>(B) Export of Services</b>	<b>96,000</b>	<b>547</b>	<b>481</b>	<b>4,492</b>	<b>3,801</b>	<b>18.2</b>
<b>(C) Export of Goods &amp; Services (A+B)</b>	<b>602,266</b>	<b>3,432</b>	<b>2,659</b>	<b>25,109</b>	<b>19,894</b>	<b>26.2</b>

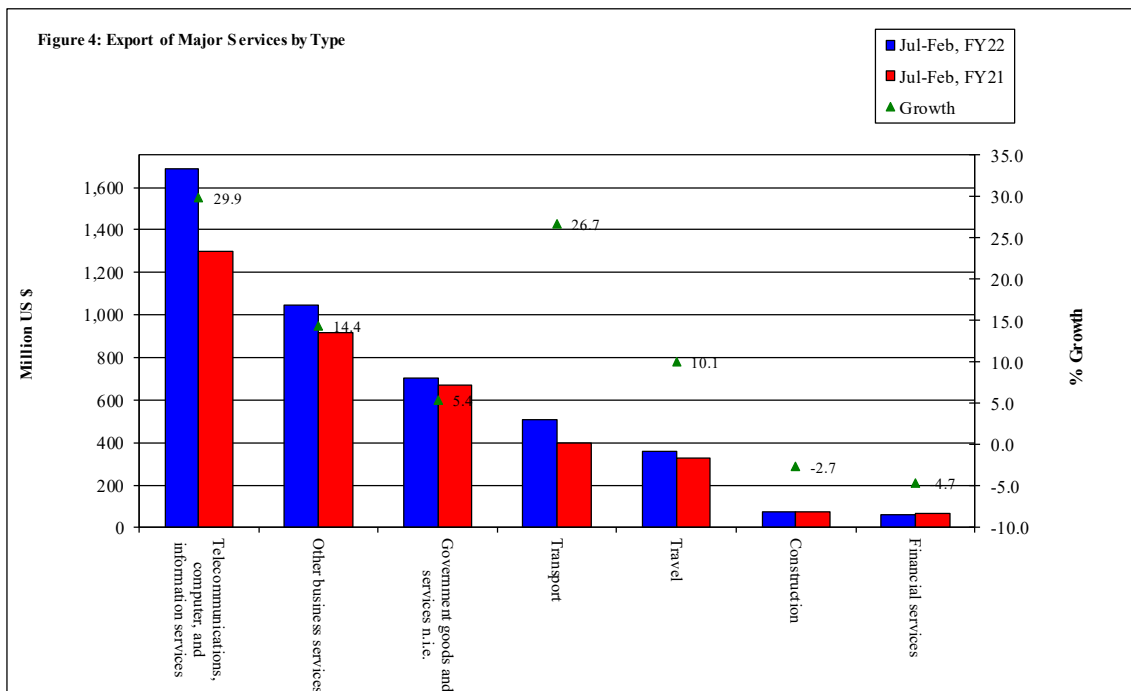
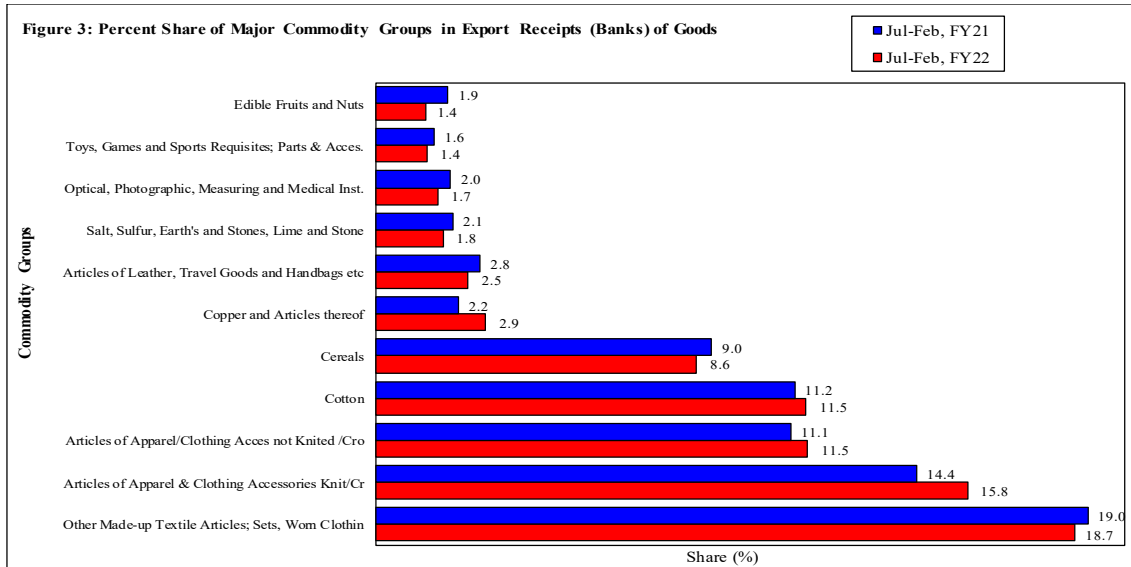
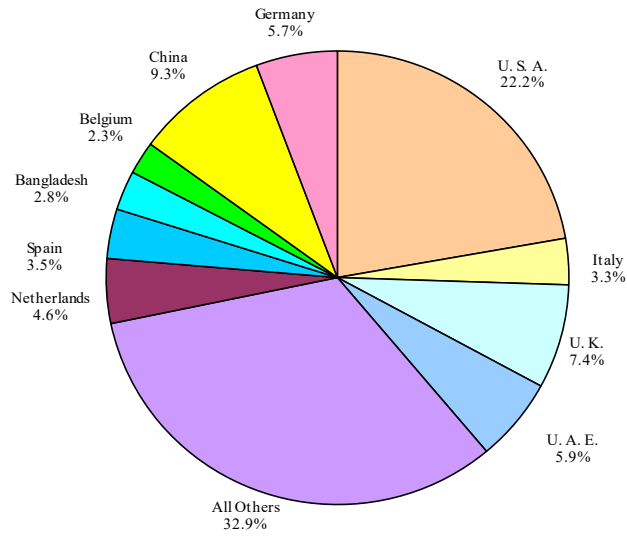


Table 3: Export Receipts by Major Countries

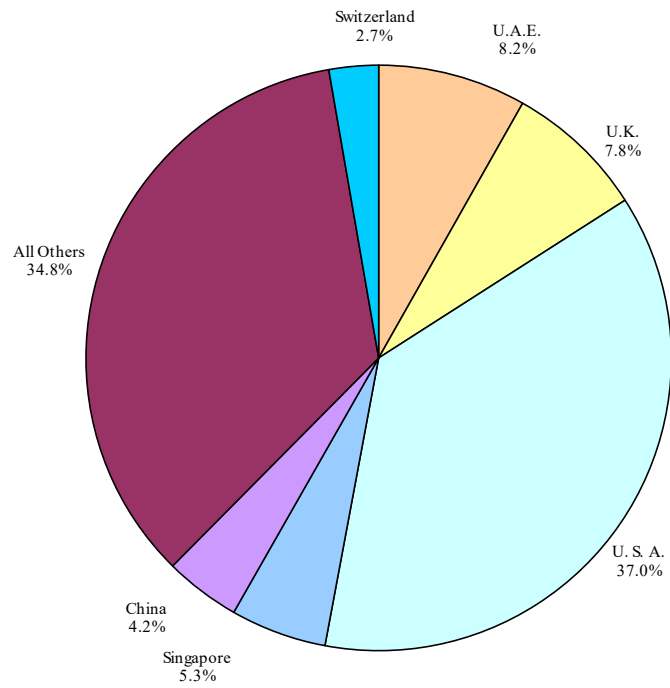
(Amount in Millions)

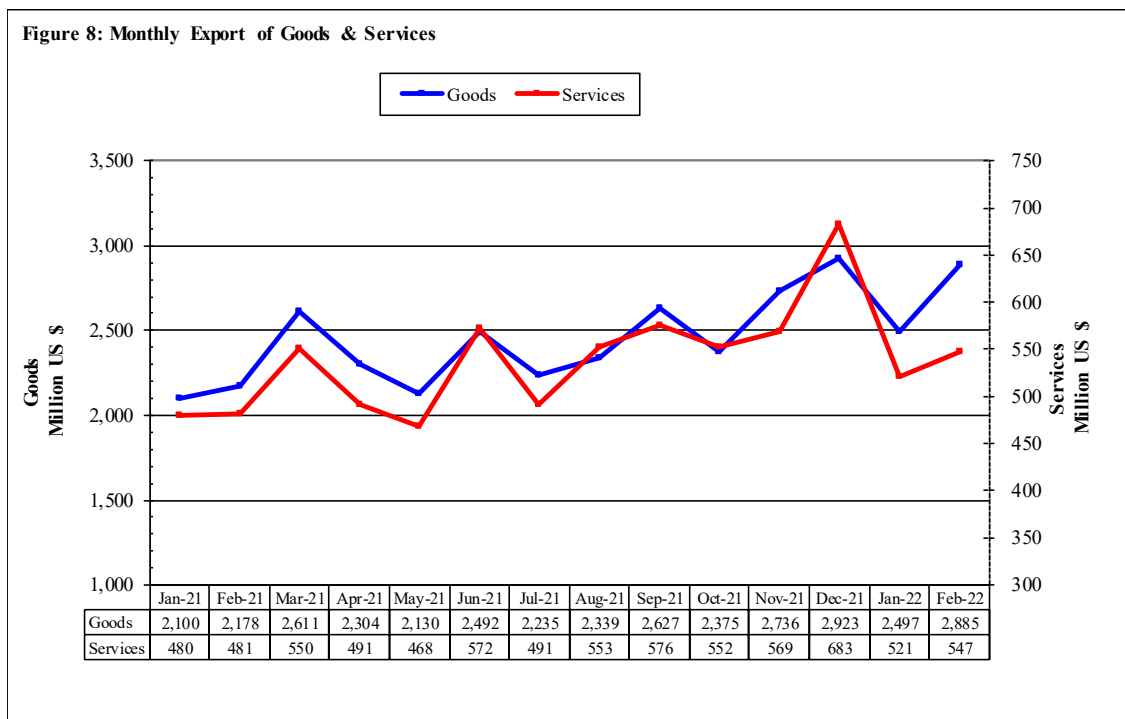
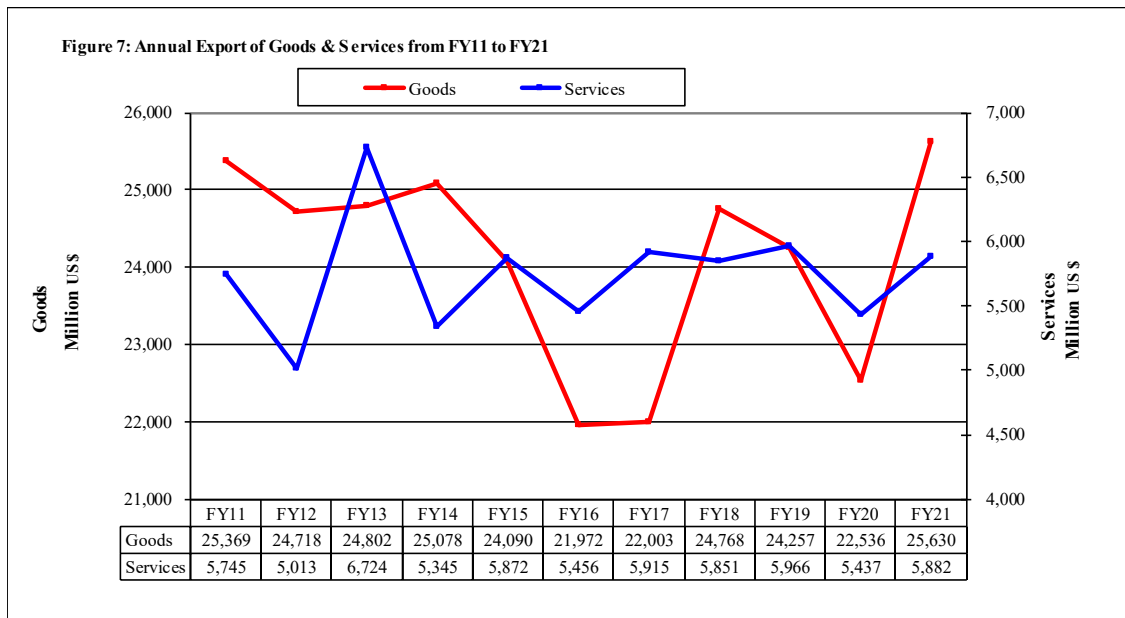
Country	FEBRUARY			JULY- FEBRUARY		
	2022	2022	2021	FY22	FY21	% Change
	Pak Rs.	US \$				
<b>I. Export Receipts (Banks)</b>	<b>449,601</b>	<b>2,562</b>	<b>2,057</b>	<b>19,848</b>	<b>15,567</b>	<b>27.5</b>
U. S. A.	96,139	548	402	4,411	3,080	43.2
China	44,214	252	139	1,841	1,166	57.9
U. K.	28,591	163	173	1,473	1,310	12.5
U. A. E.	32,033	183	121	1,181	945	24.9
Germany	24,521	140	118	1,132	991	14.2
Netherlands	20,550	117	97	917	716	28.1
Spain	16,342	93	73	699	513	36.4
Italy	14,359	82	69	652	485	34.5
Bangladesh	13,309	76	53	559	376	48.8
Belgium	9,540	54	48	460	358	28.4
France	6,316	36	32	334	288	16.1
Afghanistan	6,707	38	86	296	630	-53.0
Malaysia	6,634	38	21	269	127	111.0
Saudi Arabia	5,618	32	51	260	327	-20.4
Canada	5,738	33	26	256	193	32.2
All Others	118,989	678	548	5,110	4,063	25.8
<b>II. Freight on Exports</b>	<b>5,366</b>	<b>31</b>	<b>12</b>	<b>267</b>	<b>159</b>	<b>67.5</b>
<b>III. Other Exports Unaccounted by Banks</b>	<b>62,030</b>	<b>353</b>	<b>134</b>	<b>1,036</b>	<b>685</b>	<b>51.2</b>
<b>(A) Export of Goods (I-II+III)</b>	<b>506,266</b>	<b>2,885</b>	<b>2,178</b>	<b>20,617</b>	<b>16,093</b>	<b>28.1</b>
<b>Services</b>						
U. S. A.	31,677	181	169	1,662	1,407	18.1
U.A.E.	7,511	43	38	367	310	18.3
U.K.	8,483	48	34	348	261	33.5
Singapore	5,436	31	19	238	159	49.5
China	2,454	14	14	188	189	-0.5
Switzerland	2,432	14	9	123	82	50.4
Germany	2,465	14	14	110	104	5.7
Saudi Arabia	2,059	12	12	107	90	18.9
W.H.O.	1,541	9	12	91	55	65.7
Bahrain	2,354	13	5	73	48	52.4
France	1,502	9	7	72	52	37.9
Hongkong	991	6	7	71	86	-17.6
Canada	1,569	9	7	65	50	28.2
Ireland	2,323	13	5	62	43	46.1
Sweden	1,959	11	12	46	54	-14.7
All Others	21,242	121	115	869	811	7.1
<b>(B) Export of Services</b>	<b>96,000</b>	<b>547</b>	<b>481</b>	<b>4,492</b>	<b>3,801</b>	<b>18.2</b>
<b>(C) Export of Goods &amp; Services (A+B)</b>	<b>602,266</b>	<b>3,432</b>	<b>2,659</b>	<b>25,109</b>	<b>19,894</b>	<b>26.2</b>

**Figure 5: Percent Share of Major Countries in Export Receipts (Banks) of Goods during Jul-Feb, FY22**



**Figure 6: Percent Share of Major Countries in Export of Services during Jul-Feb, FY22**





**Table 4: Annual, Quarterly & Monthly Export of Goods** ( Million US\$)

Period	FY13	FY14	FY15	FY16	FY17	FY18	FY19	FY20	FY21	FY22
Annual	24,802	25,078	24,090	21,972	22,003	24,768	24,257	22,536	25,630	
Growth (%)	0.3	1.1	-3.9	-8.8	0.1	12.6	-2.1	-7.1	13.7	
<b>Quarter-wise</b>										
Quarter-I	6,151 (24.8)	6,257 (25.0)	5,960 (24.0)	5,318 (24.2)	5,054 (23.0)	5,650 (22.8)	5,893 (24.3)	5,994 (26.6)	5,354 (20.9)	7,201
Quarter-II	6,003 (24.2)	6,210 (24.8)	6,206 (25.0)	5,465 (24.9)	5,577 (25.3)	6,141 (24.8)	5,972 (24.6)	6,414 (28.5)	6,461 (25.2)	8,034
Quarter-III	6,192 (25.0)	6,279 (25.0)	5,866 (23.7)	5,545 (25.2)	5,683 (25.8)	6,463 (26.1)	6,186 (25.5)	5,873 (26.1)	6,889 (26.9)	
Quarter-IV	6,456 (26.0)	6,332 (25.2)	6,058 (24.4)	5,644 (25.7)	5,689 (25.9)	6,514 (26.3)	6,206 (25.6)	4,255 (18.9)	6,926 (27.0)	
<b>Month-wise</b>										
July	2,020 (8.1)	2,194 (8.7)	1,919 (8.0)	1,759 (8.0)	1,508 (6.9)	1,817 (7.3)	2,013 (8.3)	2,217 (9.8)	1,885 (7.4)	2,235
August	2,030 (8.2)	2,009 (8.0)	1,880 (7.8)	1,738 (7.9)	1,857 (8.4)	2,090 (8.4)	2,075 (8.6)	1,896 (8.4)	1,514 (5.9)	2,339
September	2,101 (8.5)	2,054 (8.2)	2,161 (8.7)	1,821 (7.3)	1,689 (7.7)	1,743 (7.0)	1,805 (7.4)	1,881 (8.3)	1,955 (7.6)	2,627
October	2,117 (8.5)	2,063 (8.3)	2,088 (8.4)	1,778 (7.2)	1,826 (8.3)	1,960 (7.9)	2,061 (8.5)	2,191 (9.7)	1,969 (7.7)	2,375
November	2,027 (8.2)	1,820 (7.3)	1,861 (7.5)	1,740 (7.0)	1,860 (8.5)	2,173 (8.8)	1,898 (7.8)	2,113 (9.4)	2,239 (8.7)	2,736
December	1,859 (7.5)	2,327 (9.4)	2,257 (9.1)	1,947 (7.9)	1,891 (8.6)	2,008 (8.1)	2,013 (8.3)	2,110 (9.4)	2,253 (8.8)	2,923
January	2,085 (8.4)	2,129 (8.6)	1,964 (7.9)	1,692 (6.8)	1,811 (8.2)	2,090 (8.4)	2,274 (9.4)	2,056 (9.1)	2,100 (8.2)	2,497
February	1,930 (7.8)	2,058 (8.3)	1,853 (7.5)	1,864 (7.5)	1,797 (8.2)	2,057 (8.3)	1,875 (7.7)	1,996 (8.9)	2,178 (8.5)	2,885
March	2,177 (8.8)	2,092 (8.4)	2,049 (8.3)	1,989 (8.0)	2,075 (9.4)	2,316 (9.4)	2,037 (8.4)	1,821 (8.1)	2,611 (10.2)	
April	2,204 (8.9)	2,097 (8.5)	2,067 (8.3)	1,818 (7.3)	1,827 (8.3)	2,235 (9.0)	2,084 (8.6)	1,423 (6.3)	2,304 (9.0)	
May	2,258 (9.1)	2,133 (8.6)	1,880 (7.6)	1,959 (7.9)	1,978 (9.0)	2,265 (9.1)	2,323 (9.6)	1,259 (5.6)	2,130 (8.3)	
June	1,994 (8.0)	2,102 (8.5)	2,111 (8.5)	1,867 (7.5)	1,884 (8.6)	2,014 (8.1)	1,799 (7.4)	1,573 (7.0)	2,492 (9.7)	

Notes: 1. Figures in parentheses are percentages to annual Export Receipts of the respective years

2. Due to rounding off, separate items, totals may show minor differences



**Table 5: Annual, Quarterly & Monthly Export of Services** (Million US\$)

Period	FY13	FY14	FY15	FY16	FY17	FY18	FY19	FY20	FY21	FY22
Annual	6,724	5,345	5,872	5,456	5,915	5,851	5,966	5,437	5,882	
Growth (%)	34.1	-20.5	9.9	-7.1	8.4	-1.1	2.0	-8.9	8.2	
<b><u>Quarter-wise</u></b>										
Quarter-I	2,173 (32.3)	995 (18.6)	1,743 (29.7)	1,767 (32.4)	1,227 (20.7)	1,390 (23.8)	1,471 (24.7)	1,342 (24.7)	1,276 (21.7)	1,620
Quarter-II	2,058 (30.6)	1,440 (26.9)	1,164 (19.8)	1,165 (21.4)	1,298 (21.9)	1,548 (26.5)	1,549 (26.0)	1,582 (29.1)	1,564 (26.6)	1,804
Quarter-III	1,201 (17.9)	1,396 (26.1)	1,841 (31.4)	1,152 (21.1)	1,990 (33.6)	1,456 (24.9)	1,546 (25.9)	1,421 (26.1)	1,511 (25.7)	
Quarter-IV	1,292 (19.2)	1,514 (28.3)	1,124 (19.1)	1,372 (25.1)	1,400 (23.7)	1,457 (24.9)	1,400 (23.5)	1,092 (20.1)	1,531 (26.0)	
<b><u>Month-wise</u></b>										
July	349 (5.2)	343 (6.4)	359 (6.1)	715 (13.1)	349 (5.9)	415 (7.1)	477 (8.0)	485 (8.9)	454 (7.7)	491
August	1,501 (22.3)	305 (5.7)	691 (11.8)	341 (6.3)	435 (7.4)	457 (7.8)	499 (8.4)	430 (7.9)	346 (5.9)	553
September	323 (4.8)	347 (6.5)	693 (11.8)	711 (13.0)	443 (7.5)	518 (8.9)	495 (8.3)	427 (7.9)	476 (8.1)	576
October	491 (7.3)	671 (12.6)	401 (6.8)	400 (7.3)	394 (6.7)	463 (7.9)	508 (8.5)	546 (10.0)	432 (7.3)	552
November	343 (5.1)	341 (6.4)	310 (5.3)	321 (5.9)	413 (7.0)	492 (8.4)	478 (8.0)	464 (8.5)	505 (8.6)	569
December	1,224 (18.2)	428 (8.0)	453 (7.7)	444 (8.1)	491 (8.3)	593 (10.1)	563 (9.4)	572 (10.5)	627 (10.7)	683
January	379 (5.6)	347 (6.5)	360 (6.1)	354 (6.5)	428 (7.2)	470 (8.0)	519 (8.7)	524 (9.6)	480 (8.2)	521
February	366 (5.4)	667 (12.5)	1,043 (17.8)	351 (6.4)	761 (12.9)	503 (8.6)	485 (8.1)	469 (8.6)	481 (8.2)	547
March	456 (6.8)	382 (7.1)	438 (7.5)	447 (8.2)	801 (13.5)	483 (8.3)	542 (9.1)	428 (7.9)	550 (9.4)	
April	421 (6.3)	383 (7.2)	403 (6.9)	594 (10.9)	456 (7.7)	442 (7.6)	486 (8.1)	354 (6.5)	491 (8.3)	
May	386 (5.7)	758 (14.2)	318 (5.4)	361 (6.6)	449 (7.6)	506 (8.6)	468 (7.8)	361 (6.6)	468 (8.0)	
June	485 (7.2)	373 (7.0)	403 (6.9)	417 (7.6)	495 (8.4)	509 (8.7)	446 (7.5)	377 (6.9)	572 (9.7)	

Notes: 1. Figures in parentheses are percentages to annual Export Receipts of the respective years

2. Due to rounding off separate items, totals may show minor differences