

## SUMMARY

Table 1(a) : Monthly Export of Goods and Services

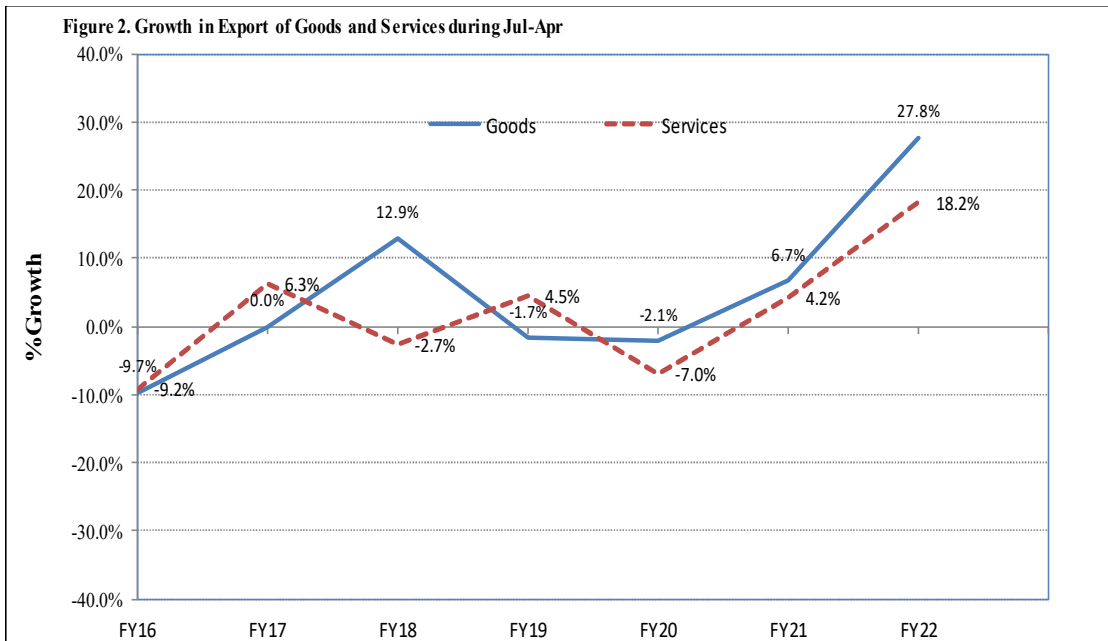
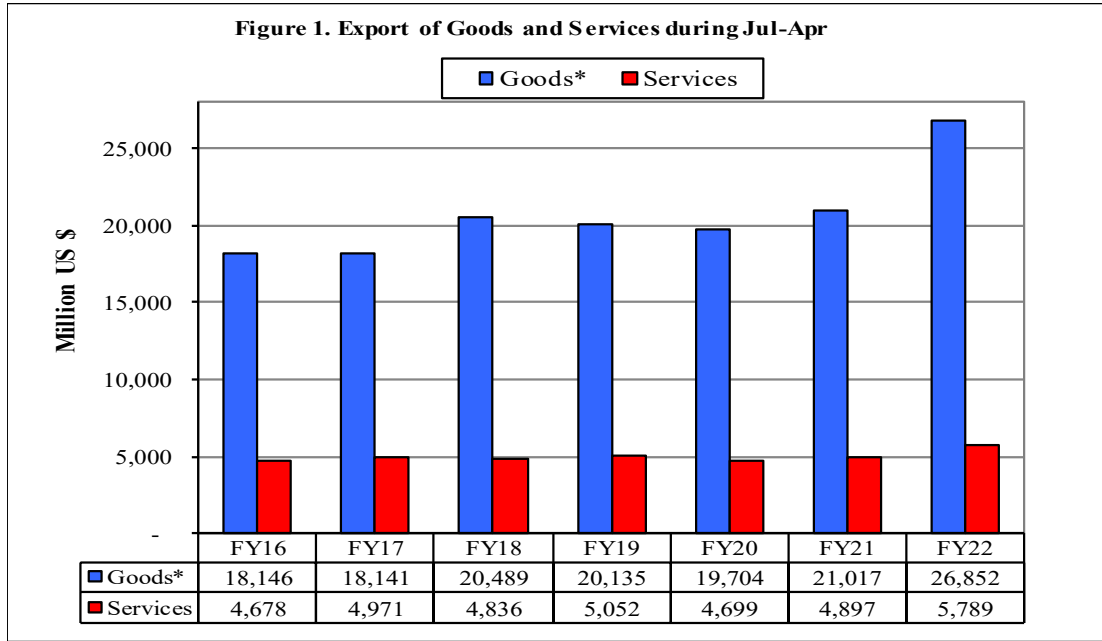
(Million US \$)

Items	April	
	2022	2021
I. Export receipts (banks)	2,833	2,322
II. Freight on Exports	23	14
III. Other Exports unaccounted for by banks	345	-3
Land borne Exports	0	6
Export of Samples	10	9
Outstanding Exports Bills	307	-31
Other Exports	28	12
<b>(A) Export of goods (I-II+III)</b>	<b>3,154</b>	<b>2,304</b>
<b>(B) Export of services</b>	<b>627</b>	<b>493</b>
<b>(C) Export of goods &amp; services (A+B)</b>	<b>3,781</b>	<b>2,797</b>

Table 1(b) : Key Indicators of Export of Goods and Services

Period	Goods				Services			
	Amount in Millions USD	Share Percent	Growth Percent		Amount in Millions USD	Share Percent	Growth Percent	
			MOM	YOY			MOM	YOY
Apr-FY22	3,154	83.4	2.7	36.9	627	16.6	-7.0	27.2
Apr-FY21	2,304	82.4	-11.9	61.9	493	17.6	-11.3	39.3
Apr-FY20	1,423	80.1	-21.9	-31.7	354	19.9	-17.3	-27.2
FY21	25,639	81.2		13.8	5,945	18.8		9.3
FY20	22,536	80.6		-7.1	5,437	19.4		-8.9
FY19	24,257	80.3		-2.1	5,966	19.7		2.0

Note: This publication is based on provisional data.



\*The data of export of goods is based on Balance of Payments and International Investment Position Manual (BPM6).

**Table 2: Export Receipts by Major Groups of Goods and Services** (Amount in Millions)

Goods/ Services	APRIL			JULY-APRIL		
	2022	2022	2021	FY22	FY21	%
	Pak Rs.			US \$		Change

**Goods**

<b>I. Export Receipts (Banks)</b>	<b>522,550</b>	<b>2,833</b>	<b>2,322</b>	<b>25,694</b>	<b>20,414</b>	<b>25.9</b>
Other Made-up Textile Articles; Sets, Worn Clothin	85,098	461	400	4,674	3,823	22.3
Articles of Apparel & Clothing Accessories Knit/Cr	79,478	431	311	3,995	2,912	37.2
Articles of Apparel/Clothing Acces not Knited /Cro	65,558	355	260	2,996	2,259	32.6
Cotton	51,580	280	259	2,910	2,274	28.0
Cereals	61,784	335	212	2,360	1,847	27.8
Copper and Articles thereof	13,597	74	48	738	449	64.4
Articles of Leather, Travel Goods and Handbags etc	12,231	66	50	623	542	15.0
Salt, Sulfur, Earth's and Stones, Lime and Stone	6,853	37	54	431	420	2.5
Optical, Photographic, Measuring and Medical Inst.	9,075	49	37	420	395	6.3
Beverages, Spirits and Vinegar	13,126	71	47	404	280	44.4
Plastics and Articles thereof	6,476	35	29	347	248	39.8
Mineral Fuels, Oils and Their Distillation Product	4,380	24	35	347	195	77.6
Toys, Games and Sports Requisites; Parts & Acces.	6,992	38	32	343	308	11.2
Man-Made Staple Fibers	6,601	36	32	340	275	24.0
Edible Fruits and Nuts	5,071	27	37	335	396	-15.3
Fish and Crustaceans	7,869	43	50	329	334	-1.5
Ores Slag and Ash	7,177	39	23	325	250	30.4
Meat and Edible Meat Offal	6,226	34	34	265	294	-9.7
All others	73,381	398	371	3,511	2,913	20.5
<b>II. Freight on Exports</b>	<b>4,282</b>	<b>23</b>	<b>14</b>	<b>301</b>	<b>195</b>	<b>54.4</b>
<b>III. Other Exports Unaccounted by Banks</b>	<b>63,589</b>	<b>345</b>	<b>-3</b>	<b>1,459</b>	<b>798</b>	<b>82.9</b>
<b>(A) Export General Merchandise (I-II+III)</b>	<b>581,857</b>	<b>3,154</b>	<b>2,304</b>	<b>26,852</b>	<b>21,017</b>	<b>27.8</b>

**Services**

Telecommunications, computer, and information services	45,933	249	193	2,198	1,700	29.3
Other business services	27,113	147	132	1,356	1,181	14.8
Government goods and services n.i.e.	18,451	100	82	920	848	8.5
Transport	12,726	69	29	635	471	34.8
Travel	8,113	44	42	463	426	8.7
Construction	928	5	2	83	89	-6.7
Financial services	1,474	8	8	77	122	-36.9
Insurance and pension services	373	2	3	32	37	-13.2
Personal, cultural, and recreational services	373	2	1	11	9	22.0
Charges for the use of intellectual property n.i.e.	188	1	1	11	11	-1.5
Maintenance and repair services n.i.e.	6	0	0	3	3	-4.9
<b>(B) Export of Services</b>	<b>115,677</b>	<b>627</b>	<b>493</b>	<b>5,789</b>	<b>4,897</b>	<b>18.2</b>
<b>(C) Export of Goods &amp; Services (A+B)</b>	<b>697,534</b>	<b>3,781</b>	<b>2,797</b>	<b>32,641</b>	<b>25,914</b>	<b>26.0</b>

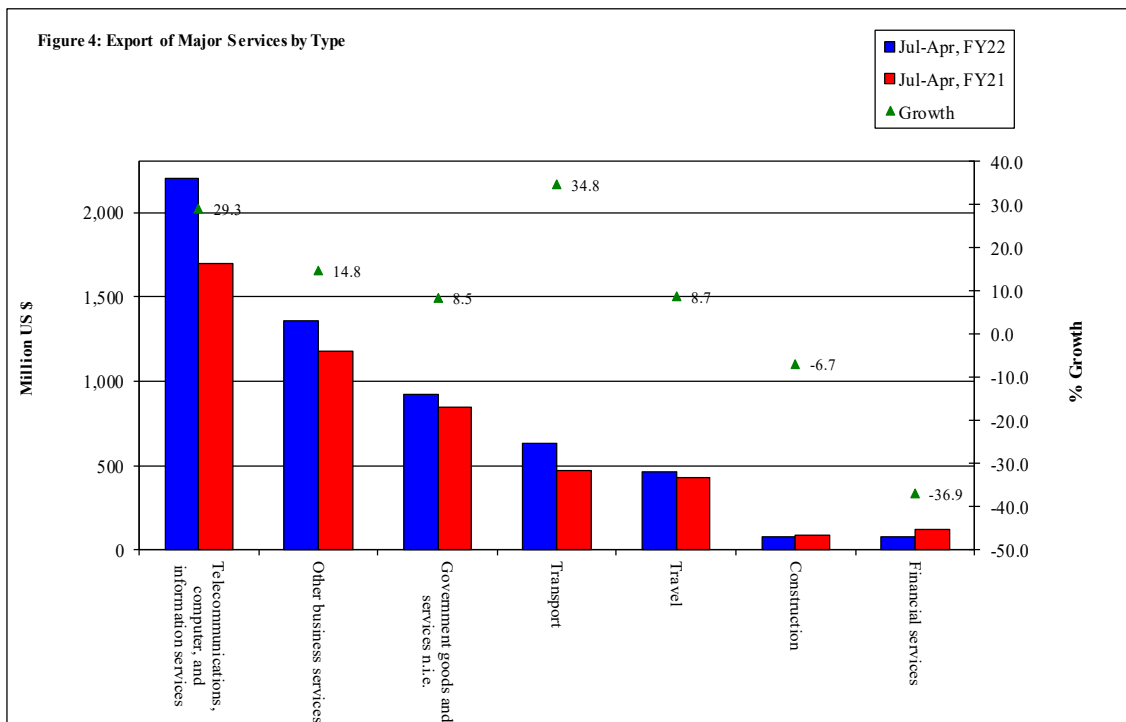
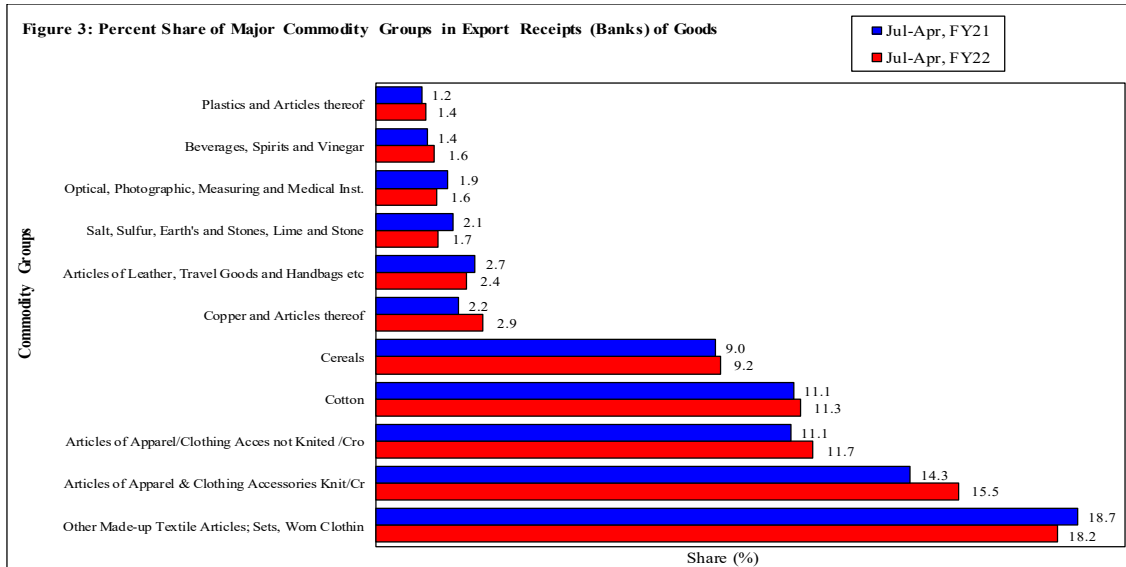


Table 3: Export Receipts by Major Countries

(Amount in Millions)

Country	APRIL			JULY-APRIL		
	2022	2022	2021	FY22	FY21	% Change
	Pak Rs.	US \$				

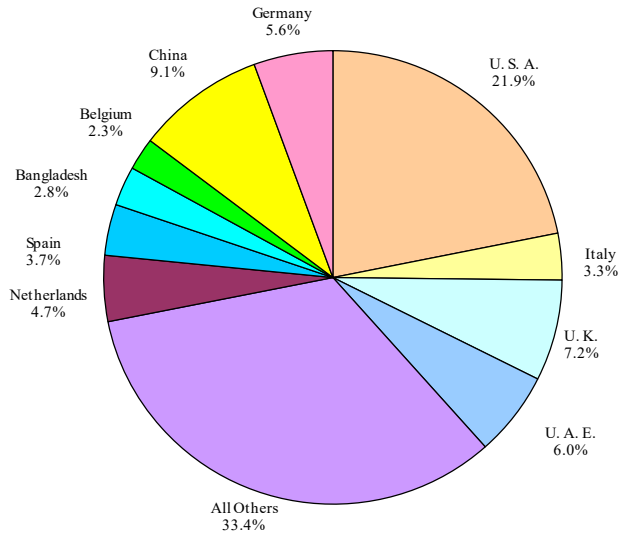
**Goods**

<b>I. Export Receipts (Banks)</b>	<b>522,550</b>	<b>2,833</b>	<b>2,322</b>	<b>25,694</b>	<b>20,414</b>	<b>25.9</b>
U. S. A.	114,049	618	456	5,617	4,021	39.7
China	39,801	216	235	2,343	1,641	42.7
U. K.	33,238	180	184	1,851	1,692	9.4
U. A. E.	34,926	189	130	1,550	1,217	27.3
Germany	24,510	133	112	1,431	1,247	14.8
Netherlands	25,418	138	92	1,205	923	30.5
Spain	20,663	112	74	940	669	40.5
Italy	18,064	98	71	857	631	35.8
Bangladesh	13,268	72	59	721	498	44.9
Belgium	12,066	65	52	589	469	25.6
Afghanistan	12,323	67	82	436	829	-47.4
France	9,303	50	31	430	362	18.9
Malaysia	7,627	41	32	358	182	96.3
Saudi Arabia	7,824	42	36	346	402	-14.0
Canada	6,270	34	26	328	254	29.2
All Others	143,200	776	649	6,694	5,377	24.5
<b>II. Freight on Exports</b>	<b>4,282</b>	<b>23</b>	<b>14</b>	<b>301</b>	<b>195</b>	<b>54.4</b>
<b>III. Other Exports Unaccounted by Banks</b>	<b>63,589</b>	<b>345</b>	<b>-3</b>	<b>1,459</b>	<b>798</b>	<b>82.9</b>
<b>(A) Export of Goods (I-II+III)</b>	<b>581,857</b>	<b>3,154</b>	<b>2,304</b>	<b>26,852</b>	<b>21,017</b>	<b>27.8</b>

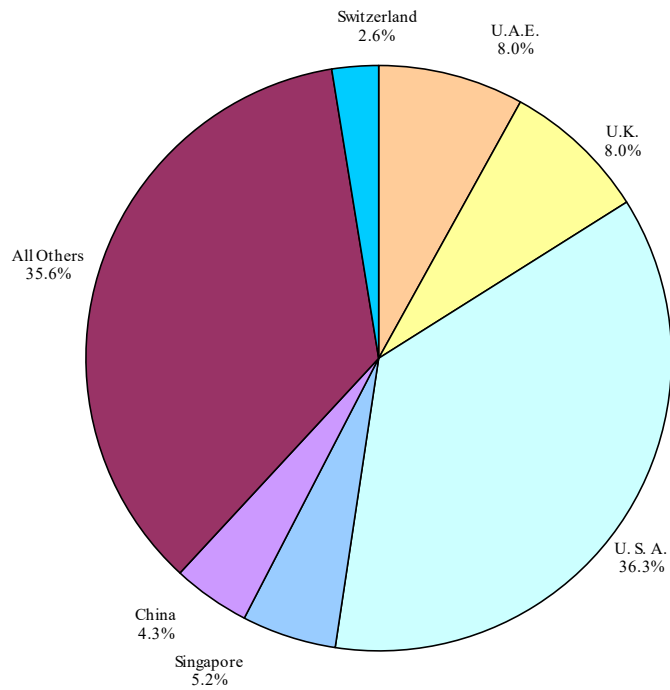
**Services**

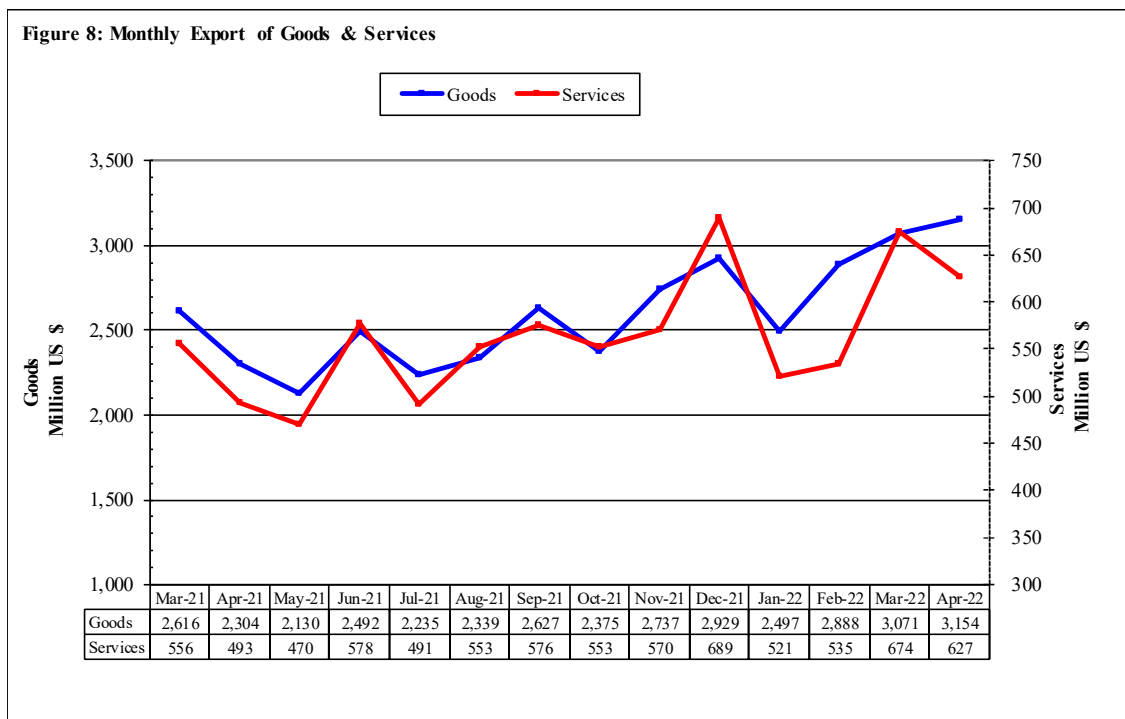
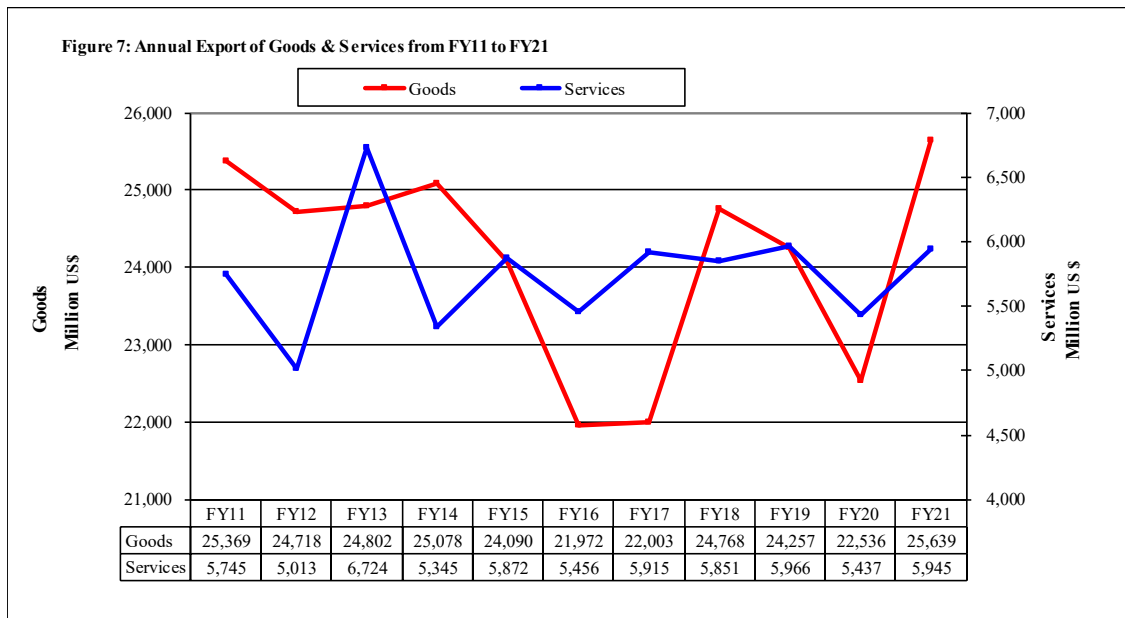
U. S. A.	39,751	215	188	2,103	1,850	13.7
U.A.E.	9,633	52	37	465	401	16.0
U.K.	9,729	53	34	465	333	39.4
Singapore	5,988	32	23	302	210	43.9
China	3,514	19	18	248	232	6.8
Switzerland	3,256	18	13	148	106	39.6
Germany	2,879	16	12	141	136	4.0
Saudi Arabia	2,363	13	8	130	111	17.4
W.H.O.	1,377	7	13	114	68	68.2
Ireland	2,994	16	7	97	57	68.3
Hongkong	2,147	12	8	96	102	-5.3
France	2,278	12	6	95	66	42.4
Bahrain	804	4	5	88	61	44.6
Canada	2,032	11	7	87	65	34.1
Sweden	2,205	12	11	66	68	-2.0
All Others	24,728	134	103	1,145	1,032	10.9
<b>(B) Export of Services</b>	<b>115,677</b>	<b>627</b>	<b>493</b>	<b>5,789</b>	<b>4,897</b>	<b>18.2</b>
<b>(C) Export of Goods &amp; Services (A+B)</b>	<b>697,534</b>	<b>3,781</b>	<b>2,797</b>	<b>32,641</b>	<b>25,914</b>	<b>26.0</b>

**Figure 5: Percent Share of Major Countries in Export Receipts (Banks) of Goods during Jul-Apr, FY22**



**Figure 6: Percent Share of Major Countries in Export of Services during Jul-Apr, FY22**





**Table 4: Annual, Quarterly & Monthly Export of Goods** (Million US\$)

Period	FY13	FY14	FY15	FY16	FY17	FY18	FY19	FY20	FY21	FY22
Annual	24,802	25,078	24,090	21,972	22,003	24,768	24,257	22,536	25,639	
Growth (%)	0.3	1.1	-3.9	-8.8	0.1	12.6	-2.1	-7.1	13.8	
<b>Quarter-wise</b>										
Quarter-I	6,151 (24.8)	6,257 (25.0)	5,960 (24.0)	5,318 (24.2)	5,054 (23.0)	5,650 (22.8)	5,893 (24.3)	5,994 (26.6)	5,349 (20.9)	7,201
Quarter-II	6,003 (24.2)	6,210 (24.8)	6,206 (25.0)	5,465 (24.9)	5,577 (25.3)	6,141 (24.8)	5,972 (24.6)	6,414 (28.5)	6,464 (25.2)	8,041
Quarter-III	6,192 (25.0)	6,279 (25.0)	5,866 (23.7)	5,545 (25.2)	5,683 (25.8)	6,463 (26.1)	6,186 (25.5)	5,873 (26.1)	6,900 (26.9)	8,456
Quarter-IV	6,456 (26.0)	6,332 (25.2)	6,058 (24.4)	5,644 (25.7)	5,689 (25.9)	6,514 (26.3)	6,206 (25.6)	4,255 (18.9)	6,926 (27.0)	
<b>Month-wise</b>										
July	2,020 (8.1)	2,194 (8.7)	1,919 (8.0)	1,759 (8.0)	1,508 (6.9)	1,817 (7.3)	2,013 (8.3)	2,217 (9.8)	1,887 (7.4)	2,235
August	2,030 (8.2)	2,009 (8.0)	1,880 (7.8)	1,738 (7.9)	1,857 (8.4)	2,090 (8.4)	2,075 (8.6)	1,896 (8.4)	1,515 (5.9)	2,339
September	2,101 (8.5)	2,054 (8.2)	2,161 (8.7)	1,821 (7.3)	1,689 (7.7)	1,743 (7.0)	1,805 (7.4)	1,881 (8.3)	1,947 (7.6)	2,627
October	2,117 (8.5)	2,063 (8.3)	2,088 (8.4)	1,778 (7.2)	1,826 (8.3)	1,960 (7.9)	2,061 (8.5)	2,191 (9.7)	1,969 (7.7)	2,375
November	2,027 (8.2)	1,820 (7.3)	1,861 (7.5)	1,740 (7.0)	1,860 (8.5)	2,173 (8.8)	1,898 (7.8)	2,113 (9.4)	2,240 (8.7)	2,737
December	1,859 (7.5)	2,327 (9.4)	2,257 (9.1)	1,947 (7.9)	1,891 (8.6)	2,008 (8.1)	2,013 (8.3)	2,110 (9.4)	2,255 (8.8)	2,929
January	2,085 (8.4)	2,129 (8.6)	1,964 (7.9)	1,692 (6.8)	1,811 (8.2)	2,090 (8.4)	2,274 (9.4)	2,056 (9.1)	2,100 (8.2)	2,497
February	1,930 (7.8)	2,058 (8.3)	1,853 (7.5)	1,864 (7.5)	1,797 (8.2)	2,057 (8.3)	1,875 (7.7)	1,996 (8.9)	2,184 (8.5)	2,888
March	2,177 (8.8)	2,092 (8.4)	2,049 (8.3)	1,989 (8.0)	2,075 (9.4)	2,316 (9.4)	2,037 (8.4)	1,821 (8.1)	2,616 (10.2)	3,071
April	2,204 (8.9)	2,097 (8.5)	2,067 (8.3)	1,818 (7.3)	1,827 (8.3)	2,235 (9.0)	2,084 (8.6)	1,423 (6.3)	2,304 (9.0)	3,154
May	2,258 (9.1)	2,133 (8.6)	1,880 (7.6)	1,959 (7.9)	1,978 (9.0)	2,265 (9.1)	2,323 (9.6)	1,259 (5.6)	2,130 (8.3)	
June	1,994 (8.0)	2,102 (8.5)	2,111 (8.5)	1,867 (7.5)	1,884 (8.6)	2,014 (8.1)	1,799 (7.4)	1,573 (7.0)	2,492 (9.7)	

Notes: 1. Figures in parentheses are percentages to annual Export Receipts of the respective years

2. Due to rounding off, separate items, totals may show minor differences



**Table 5: Annual, Quarterly & Monthly Export of Services** (Million US\$)

Period	FY13	FY14	FY15	FY16	FY17	FY18	FY19	FY20	FY21	FY22
Annual	6,724	5,345	5,872	5,456	5,915	5,851	5,966	5,437	5,945	
Growth (%)	34.1	-20.5	9.9	-7.1	8.4	-1.1	2.0	-8.9	9.3	
<b><u>Quarter-wise</u></b>										
Quarter-I	2,173 (32.3)	995 (18.6)	1,743 (29.7)	1,767 (32.4)	1,227 (20.7)	1,390 (23.8)	1,471 (24.7)	1,342 (24.7)	1,289 (21.7)	1,620
Quarter-II	2,058 (30.6)	1,440 (26.9)	1,164 (19.8)	1,165 (21.4)	1,298 (21.9)	1,548 (26.5)	1,549 (26.0)	1,582 (29.1)	1,590 (26.7)	1,812
Quarter-III	1,201 (17.9)	1,396 (26.1)	1,841 (31.4)	1,152 (21.1)	1,990 (33.6)	1,456 (24.9)	1,546 (25.9)	1,421 (26.1)	1,525 (25.7)	1,730
Quarter-IV	1,292 (19.2)	1,514 (28.3)	1,124 (19.1)	1,372 (25.1)	1,400 (23.7)	1,457 (24.9)	1,400 (23.5)	1,092 (20.1)	1,541 (25.9)	
<b><u>Month-wise</u></b>										
July	349 (5.2)	343 (6.4)	359 (6.1)	715 (13.1)	349 (5.9)	415 (7.1)	477 (8.0)	485 (8.9)	456 (7.7)	491
August	1,501 (22.3)	305 (5.7)	691 (11.8)	341 (6.3)	435 (7.4)	457 (7.8)	499 (8.4)	430 (7.9)	350 (5.9)	553
September	323 (4.8)	347 (6.5)	693 (11.8)	711 (13.0)	443 (7.5)	518 (8.9)	495 (8.3)	427 (7.9)	483 (8.1)	576
October	491 (7.3)	671 (12.6)	401 (6.8)	400 (7.3)	394 (6.7)	463 (7.9)	508 (8.5)	546 (10.0)	440 (7.4)	553
November	343 (5.1)	341 (6.4)	310 (5.3)	321 (5.9)	413 (7.0)	492 (8.4)	478 (8.0)	464 (8.5)	514 (8.6)	570
December	1,224 (18.2)	428 (8.0)	453 (7.7)	444 (8.1)	491 (8.3)	593 (10.1)	563 (9.4)	572 (10.5)	636 (10.7)	689
January	379 (5.6)	347 (6.5)	360 (6.1)	354 (6.5)	428 (7.2)	470 (8.0)	519 (8.7)	524 (9.6)	484 (8.1)	521
February	366 (5.4)	667 (12.5)	1,043 (17.8)	351 (6.4)	761 (12.9)	503 (8.6)	485 (8.1)	469 (8.6)	485 (8.2)	535
March	456 (6.8)	382 (7.1)	438 (7.5)	447 (8.2)	801 (13.5)	483 (8.3)	542 (9.1)	428 (7.9)	556 (9.4)	674
April	421 (6.3)	383 (7.2)	403 (6.9)	594 (10.9)	456 (7.7)	442 (7.6)	486 (8.1)	354 (6.5)	493 (8.3)	627
May	386 (5.7)	758 (14.2)	318 (5.4)	361 (6.6)	449 (7.6)	506 (8.6)	468 (7.8)	361 (6.6)	470 (7.9)	
June	485 (7.2)	373 (7.0)	403 (6.9)	417 (7.6)	495 (8.4)	509 (8.7)	446 (7.5)	377 (6.9)	578 (9.7)	

Notes: 1. Figures in parentheses are percentages to annual Export Receipts of the respective years

2. Due to rounding off separate items, totals may show minor differences