

## SUMMARY

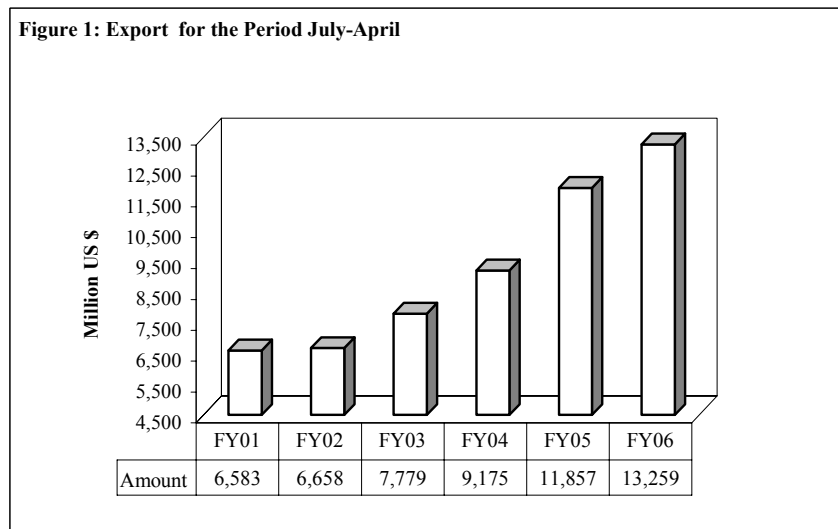
<b>Table 1(a) : Details of Export By Source.</b>		(Amount in Million US \$)			
Items	April		July- April		
	2006	2005	2005-2006	2004-2005	
Exports Receipts (Scheduled Banks)	1,312	1,230	12,507	11,595	
Less Freight on Export	40	43	422	401	
Other Exports Unaccounted by Scheduled Banks	133	29	1,173	662	
Land borne Exports *	55	43	771	409	
Export of Samples	1	0	2	2	
EPZ	15	0	132	0	
Outstanding Export Bills	62	-11	269	253	
Refund & Rebate	0	-3	0	-3	
<b>Total Exports</b>	<b>1,405</b>	<b>1,216</b>	<b>13,259</b>	<b>11,857</b>	

Note: See page 'v' of Introduction for more details.

\* Provisional

<b>Table 1(b) : Key Indicators of Exports</b>		(Amount in million)	
	Pak. Rs.	US \$	
April 2006	84,307	1,405	
March 2006	91,619	1,527	
%Change during April 2006 over March 2006	-8.0	-8.0	
April 2005	72,245	1,216	
%Change during April 2006 over April 2005	16.7	15.5	
July 2005 – April 2006	792,996	13,259	
July 2004 – April 2005	703,300	11,857	
%Change during July 2005– April 2006 over July 2004 – April 2005	12.8	11.8	
Monthly average during July 2005 – April 2006	79,300	1,326	
Monthly average during July 2004 – April 2005	70,330	1,186	
FY05	854,962	14,401	
FY04	714,123	12,396	
%Change during FY05 over FY04	19.7	16.2	
Monthly average during FY05	71,247	1,200	
Monthly average during FY04	59,510	1,033	

Figure 1: Export for the Period July-April



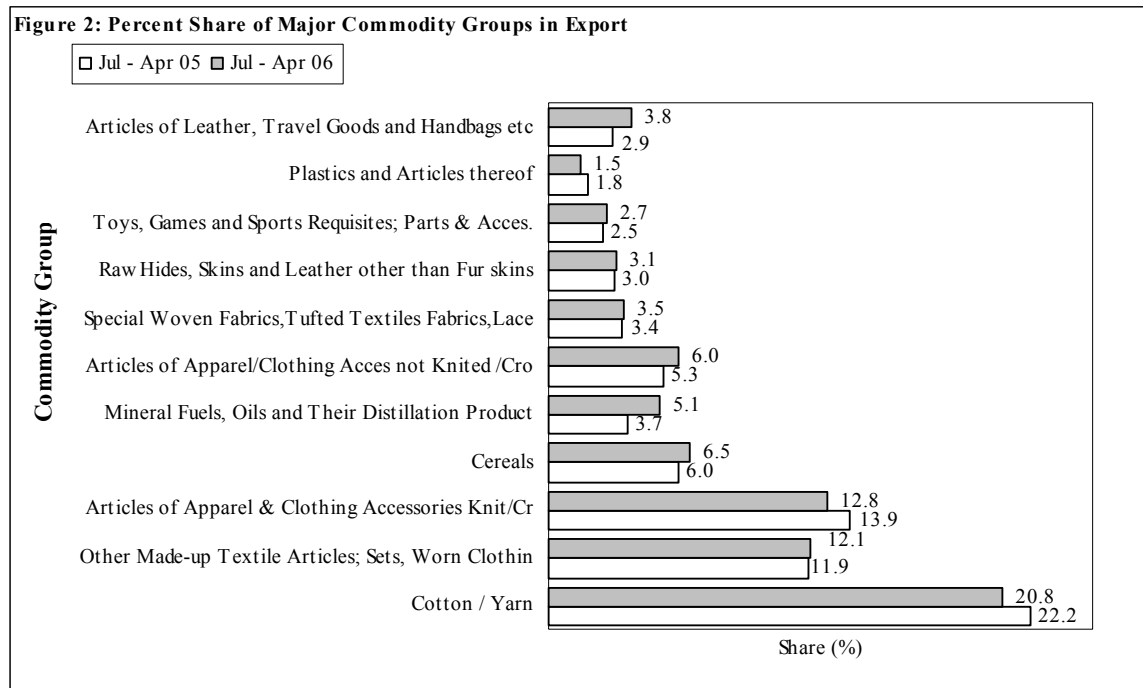
Note:-From January 2006, the amounts represent the total export used in BOP, computed as per details in table 1(a)

**Table 2: Exports by Major Commodity Groups**

(Amount in million)

Commodity	April			July- April		
	2006	2006	2005	2005-2006	2004-2005	%
	Pak Rs.	US \$				Change
Cotton / Yarn	15,986	266	278	2,607	2,571	1.4
Other Made-up Tex Articles; Sets, Worn Clothing	9,671	161	136	1,508	1,380	9.3
Articles of Apparel & Clothing Acc Kn/Cr	9,316	155	151	1,601	1,608	-0.4
Cereals	6,666	111	88	813	695	17.0
Mineral Fuels, Oils & Distillation Product	5,135	86	49	638	424	50.5
Articles of Apparel/Clothing Acc not Kn/Cr	4,339	72	63	751	609	23.3
Special Woven Fab, Tufted Tex Fab, Lace	2,320	39	41	433	390	11.0
Raw Hides, Skins & Leather other than Fur skins	2,310	39	35	388	348	11.5
Toys, Games & Sports Requisites; Parts & Acc.	2,153	36	31	333	287	16.0
Plastics and Articles thereof	1,831	31	28	187	209	-10.5
Articles of Leather, Travel Goods and Handbags	1,746	29	36	478	341	40.2
Carpets and other Textile Floor Coverings	1,277	21	24	223	231	-3.5
Optical, Photographic, Measuring & Medical Inst.	1,105	18	15	171	154	11.0
Man-Made Staple Fibers	1,034	17	23	167	207	-19.3
Edible Fruits and Nuts	948	16	8	116	88	31.8
Fish and Crustaceans	946	16	12	127	112	13.4
Electrical Machinery & Equipment and Parts	850	14	11	113	84	34.5
Sugars and Sugar Confectionery	782	13	14	75	117	-35.9
All Others	10,312	172	187	1,778	1,740	2.2
<b>Total Exports Receipts (Scheduled Banks)</b>	<b>78,727</b>	<b>1,312</b>	<b>1,230</b>	<b>12,507</b>	<b>11,595</b>	<b>7.9</b>
Less Freight on Export	2,382	40	43	422	401	5.2
Other Exports Unaccounted by Scheduled Banks	7,962	133	29	1,173	662	77.2
Land borne Exports *	3,300	55	43	771	409	88.5
Export of Samples	30	1	0	2	2	0
EPZ	894	15	0	132	0	--
Outstanding Export Bills	3,738	62	-11	269	253	6.3
Refund & Rebate	0	0	-3	0	-3	-100
<b>Total Exports</b>	<b>84,307</b>	<b>1,405</b>	<b>1,216</b>	<b>13,259</b>	<b>11,857</b>	<b>11.8</b>

Kn: Knitted, Cr: Crocheted, Acc: Accessories, Tex: Textile, Fab: Fabrics

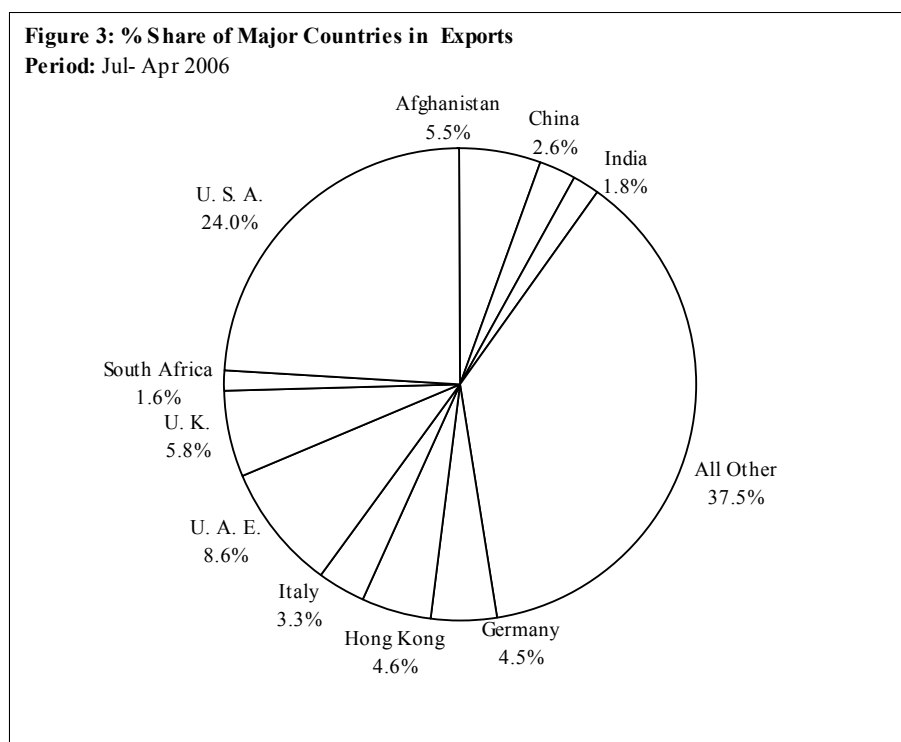


Note: - The share is based on the share of commodities in export receipts (banks) only

**Table 3: Exports by Major Countries** (Amount in million)

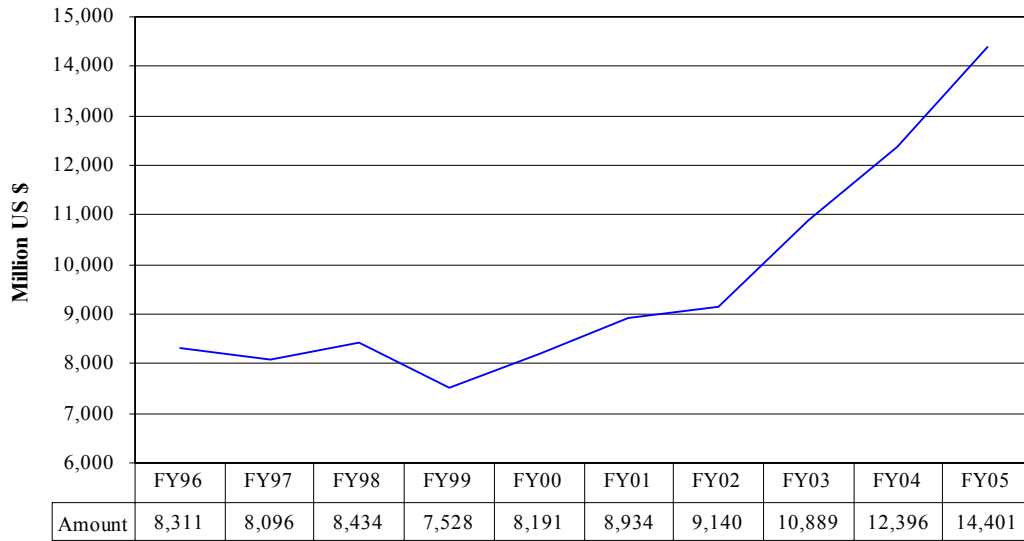
Country	April			July - April		
	2006	2006	2005	2005-2006	2004-2005	% Change
	Pak Rs			US \$		
U. S. A.	18,241	304	271	3,007	2,596	15.8
U. A. E.	5,825	97	84	1,078	936	15.2
Afghanistan	4,768	79	85	691	586	17.9
U. K.	4,272	71	77	729	883	-17.4
Hong Kong	3,622	60	54	579	539	7.4
Germany	3,373	56	59	564	558	1.1
India	2,580	43	31	225	143	57.3
Italy (Including Vatican City)	2,392	40	46	418	434	-3.7
China	2,315	39	24	324	215	50.7
South Africa	2,314	39	16	204	138	47.8
Netherlands (Holland)	1,938	32	29	256	237	8.0
Spain	1,615	27	29	314	272	15.4
Turkey	1,522	25	20	243	181	34.3
Bangladesh	1,520	25	20	189	169	11.8
France	1,515	25	27	303	337	-10.1
All Others	20,915	350	358	3,383	3,371	0.4
<b>Total Exports Receipts (Scheduled Banks)</b>	<b>78,727</b>	<b>1,312</b>	<b>1,230</b>	<b>12,507</b>	<b>11,595</b>	<b>7.9</b>
Less Freight on Export	2,382	40	43	422	401	5.2
Other Exports Unaccounted by Scheduled Banks	7,962	133	29	1,173	662	77.2
Land borne Exports *	3,300	55	43	771	409	88.5
Export of Samples	30	1	0	2	2	0
EPZ	894	15	0	132	0	--
Outstanding Export Bills	3,738	62	-11	269	253	6.3
Refund & Rebate	0	0	-3	0	-3	-100
<b>Total Exports</b>	<b>84,307</b>	<b>1,405</b>	<b>1,216</b>	<b>13,259</b>	<b>11,857</b>	<b>11.8</b>

\* Provisional

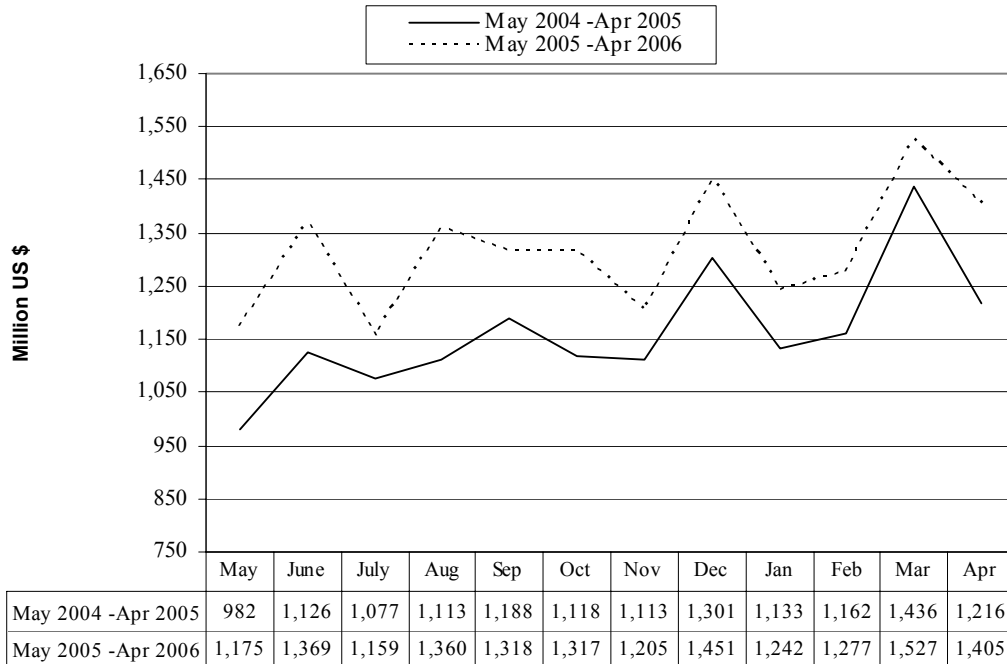


Note: - The share is based on the share of different countries in export receipts (banks)

**Figure 4: Annual Exports from FY96 to FY05**



**Figure 5: Monthly Exports from May 04 - Apr 05 & May 05- Apr 06**



**Table 4: Annual, Quarterly & Monthly Export Series** (Million Rs)

Period	1996-97	1997-98	1998-99	1999-00	2000-01	2001-02	2002-03	2003-04	2004-05	2005-06
Annual	316,250	364,486	352,675	424,195	523,225	561,295	636,597	714,123	854,962	
Growth (%)	13.0	15.3	-3.2	20.3	23.3	7.3	13.4	12.2	19.7	
<b>Quarter-wise</b>										
Quarter-I	66,924 (21.2)	83,178 (22.8)	85,631 (24.3)	92,883 (21.9)	115,827 (22.1)	141,253 (25.2)	156,083 (24.5)	174,152 (24.4)	198,261 (23.2)	228,967
Quarter-II	85,102 (26.9)	94,555 (25.9)	81,900 (23.2)	102,384 (24.1)	126,351 (24.1)	142,263 (25.3)	149,647 (23.5)	175,864 (24.6)	211,299 (24.7)	237,376
Quarter-III	80,079 (25.3)	91,881 (25.2)	89,832 (25.5)	103,314 (24.4)	134,933 (25.8)	128,550 (22.9)	151,266 (23.8)	178,302 (25.0)	221,550 (25.9)	242,354
Quarter-IV	84,146 (26.6)	94,872 (26.0)	95,311 (27.0)	125,615 (29.6)	146,115 (27.9)	149,229 (26.6)	179,601 (28.2)	185,806 (26.0)	223,852 (26.2)	
<b>Month-wise</b>										
July	19,511 (6.2)	28,583 (7.8)	27,342 (7.8)	31,325 (7.4)	34,340 (6.6)	43,261 (7.7)	47,534 (7.5)	57,108 (8.0)	62,765 (7.3)	69,098
August	22,590 (7.1)	27,582 (7.6)	29,191 (8.3)	30,107 (7.1)	40,810 (7.8)	50,074 (8.9)	53,262 (8.4)	54,378 (7.6)	65,437 (7.7)	81,112
September	24,822 (7.8)	27,013 (7.4)	29,099 (8.3)	31,451 (7.4)	40,677 (7.8)	47,918 (8.5)	55,288 (8.7)	62,665 (8.8)	70,059 (8.2)	78,757
October	29,880 (9.4)	31,583 (8.7)	28,960 (8.2)	32,087 (7.6)	44,085 (8.4)	53,625 (9.6)	49,900 (7.8)	59,345 (8.3)	67,115 (7.9)	78,621
November	25,057 (7.9)	30,382 (8.3)	26,147 (7.4)	32,457 (7.7)	41,498 (7.9)	48,350 (8.6)	51,203 (8.0)	50,741 (7.1)	66,712 (7.8)	72,004
December	30,165 (9.5)	32,590 (8.9)	26,793 (7.6)	37,840 (8.9)	40,768 (7.8)	40,288 (7.2)	48,544 (7.6)	65,778 (9.2)	77,472 (9.1)	86,751
January	24,615 (7.8)	27,600 (7.6)	29,052 (8.2)	31,942 (7.5)	45,834 (8.8)	43,766 (7.8)	51,957 (8.2)	64,804 (9.1)	67,351 (7.9)	74,291
February	25,821 (8.2)	31,619 (8.7)	29,883 (8.5)	35,584 (8.4)	43,344 (8.3)	40,428 (7.2)	49,485 (7.8)	51,223 (7.2)	68,987 (8.2)	76,444
March	29,642 (9.4)	32,662 (9.0)	30,897 (8.8)	35,788 (8.4)	45,755 (8.7)	44,355 (7.9)	49,824 (7.8)	62,275 (8.7)	85,222 (10.0)	91,619
April	28,340 (9.0)	32,775 (9.0)	29,283 (8.3)	33,405 (7.9)	45,007 (8.6)	49,481 (8.8)	56,736 (8.9)	63,955 (9.0)	72,245 (8.5)	84,307
May	28,228 (8.9)	29,588 (8.1)	28,751 (8.2)	35,740 (8.4)	48,041 (9.2)	47,198 (8.4)	59,348 (9.3)	56,637 (7.9)	69,922 (8.2)	
June	27,577 (8.7)	32,509 (8.9)	37,277 (10.6)	56,469 (13.3)	53,067 (10.1)	52,549 (9.4)	63,517 (10.0)	65,214 (9.1)	81,685 (9.6)	

Notes: 1. Figures in parentheses are percentage to annual export receipts of the respective years  
2. Due to rounding off separate items, totals may show minor differences  
3. From January 2006, the series is based on total exports used in the compilation of BOP

Table 5: Annual, Quarterly &amp; Monthly Export Series

( Million US\$)

Period	1996-97	1997-98	1998-99	1999-00	2000-01	2001-02	2002-03	2003-04	2004-05	2005-06
Annual	8,096	8,434	7,528	8,191	8,934	9,140	10,889	12,396	14,401	
Growth (%)	-2.6	4.2	-10.7	8.8	9.1	2.3	19.1	13.8	16.2	
<b>Quarter-wise</b>										
Quarter-I	1,866 (23.0)	2,048 (24.3)	1,855 (24.6)	1,798 (22.0)	2,135 (23.9)	2,203 (24.1)	2,623 (24.1)	3,014 (24.3)	3,378 (23.5)	3,837
Quarter-II	2,156 (26.6)	2,167 (25.7)	1,776 (23.6)	1,978 (24.1)	2,189 (24.5)	2,318 (25.4)	2,550 (23.4)	3,055 (24.6)	3,532 (24.5)	3,973
Quarter-III	1,991 (24.6)	2,080 (24.7)	1,948 (25.9)	1,995 (24.4)	2,259 (25.3)	2,137 (23.4)	2,606 (23.9)	3,106 (25.1)	3,731 (25.9)	4,046
Quarter-IV	2,083 (25.7)	2,139 (25.4)	1,949 (25.9)	2,420 (29.5)	2,351 (26.3)	2,482 (27.2)	3,110 (28.6)	3,221 (26.0)	3,760 (26.1)	
<b>Month-wise</b>										
July	553 (6.8)	704 (8.3)	591 (7.9)	607 (7.4)	654 (7.3)	675 (7.4)	795 (7.3)	989 (8.0)	1,077 (7.5)	1,159
August	635 (7.8)	679 (8.1)	633 (8.4)	583 (7.1)	756 (8.5)	781 (8.5)	895 (8.2)	941 (7.6)	1,113 (7.7)	1,360
September	678 (8.4)	665 (7.9)	631 (8.4)	608 (7.4)	725 (8.1)	747 (8.2)	933 (8.6)	1,084 (8.7)	1,188 (8.2)	1,318
October	783 (9.7)	741 (8.8)	628 (8.3)	620 (7.6)	758 (8.5)	862 (9.4)	845 (7.8)	1,031 (8.3)	1,118 (7.8)	1,317
November	623 (7.7)	688 (8.2)	567 (7.5)	627 (7.7)	728 (8.1)	791 (8.7)	874 (8.0)	885 (7.1)	1,113 (7.7)	1,205
December	750 (9.3)	738 (8.8)	581 (7.7)	731 (8.9)	703 (7.9)	665 (7.3)	831 (7.6)	1,139 (9.2)	1,301 (9.0)	1,451
January	612 (7.6)	625 (7.4)	630 (8.4)	617 (7.5)	776 (8.7)	727 (8.0)	893 (8.2)	1,129 (9.1)	1,133 (7.9)	1,242
February	642 (7.9)	716 (8.5)	648 (8.6)	687 (8.4)	727 (8.1)	672 (7.4)	852 (7.8)	893 (7.2)	1,162 (8.1)	1,277
March	737 (9.1)	739 (8.8)	670 (8.9)	691 (8.4)	756 (8.5)	738 (8.1)	861 (7.9)	1,084 (8.7)	1,436 (10.0)	1,527
April	704 (8.7)	740 (8.8)	635 (8.4)	645 (7.9)	737 (8.2)	823 (9.0)	982 (9.0)	1,113 (9.0)	1,216 (8.4)	1,405
May	698 (8.6)	670 (7.9)	593 (7.9)	690 (8.4)	777 (8.7)	785 (8.6)	1,028 (9.4)	982 (7.9)	1,175 (8.2)	
June	681 (8.4)	729 (8.6)	721 (9.6)	1,085 (13.2)	837 (9.4)	874 (9.6)	1,100 (10.1)	1,126 (9.1)	1,369 (9.5)	

Notes: 1. Figures in parentheses are percentage to annual export receipts of the respective years

2. Due to rounding off separate items, totals may show minor differences

3. From January 2006, the series is based on total exports used in the compilation of BOP