

SUMMARY

(Amount in million)

Table 1: Key Indicators of Export Receipts	Pak. Rs.	US \$
September 2005	75,686	1,267
August 2005	74,212	1,244
%Change during September 2005 over August 2005	2.0	1.8
September 2004	64,833	1,099
%Change during September 2005 over September 2004	16.7	15.3
July 2005 – September 2005	217,203	3,639
July 2004 – September 2004	195,257	3,328
%Change during July 2005–September 2005 over July 2004 – September 2004	11.2	9.3
Monthly average during July 2005 – September 2005	72,401	1,213
Monthly average during July 2004 – September 2004	65,086	1,109
FY05	830,687	13,993
FY04	691,827	12,015
%Change during FY05 over FY04	20.1	16.5
Monthly average during FY05	69,224	1,166
Monthly average during FY04	57,652	1,001

Figure 1: Export Receipts
Period: July- September

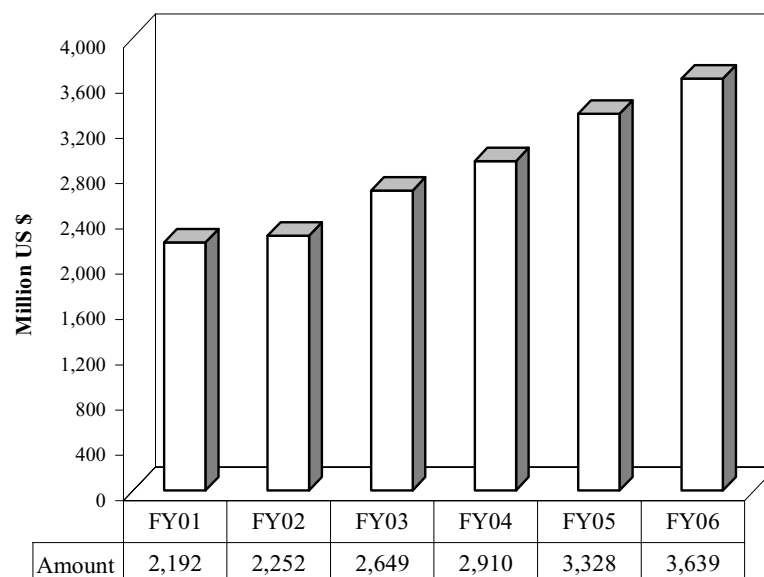


Table 2: Export Receipts by Major Commodity Groups

(Amount in million)

Commodity	September			July- September		
	2005	2005	2004	2005-2006	2004-2005	%
	Pak Rs.			US \$		Change
Cotton / Yarn	15,967	267	242	767	722	6.2
Articles of Apparel & Clothing Acc Kn/Cr	10,589	177	169	511	520	-1.7
Other Made-up Tex Articles; Sets, Worn Clothing	8,721	146	138	433	393	10.2
Articles of Apparel/Clothing Acc not Kn /Cr	4,458	75	62	222	178	24.7
Mineral Fuels, Oils & Their Distillation Product	3,821	64	41	165	128	28.9
Cereals	3,522	59	43	185	162	14.2
Special Woven Fab, Tufted Tex Fab, Lace	3,022	51	40	137	120	14.2
Articles of Leather, Travel Goods & Handbags	2,831	47	37	125	100	25.0
Raw Hides, Skins & Leather other than Fur skins	2,466	41	36	120	103	16.5
Toys, Games and Sports Requisites; Parts & Acc.	2,086	35	27	102	93	9.7
Carpets and other Textile Floor Coverings	1,421	24	21	61	62	-1.6
Man-Made Staple Fibers	1,209	20	15	61	53	15.1
Optical, Photographic, Measuring & Medical Inst.	1,058	18	15	49	46	6.5
Man-Made Filaments	988	17	19	49	63	-22.2
Plastics and Articles thereof	906	15	18	49	49	0.0
Electrical Machinery & Equipment and Parts	759	13	4	34	16	112.5
Organic Chemicals	735	12	5	30	9	233.3
Salt, Sulfur, Earth's Stones, Lime & Stone	708	12	10	35	25	40.0
All Others	10,419	174	157	504	486	3.7
Total	75,686	1,267	1,099	3,639	3,328	9.3

Kn: Knitted, Cr: Crocheted, Acc: Accessories, Tex: Textile, Fab: Fabrics

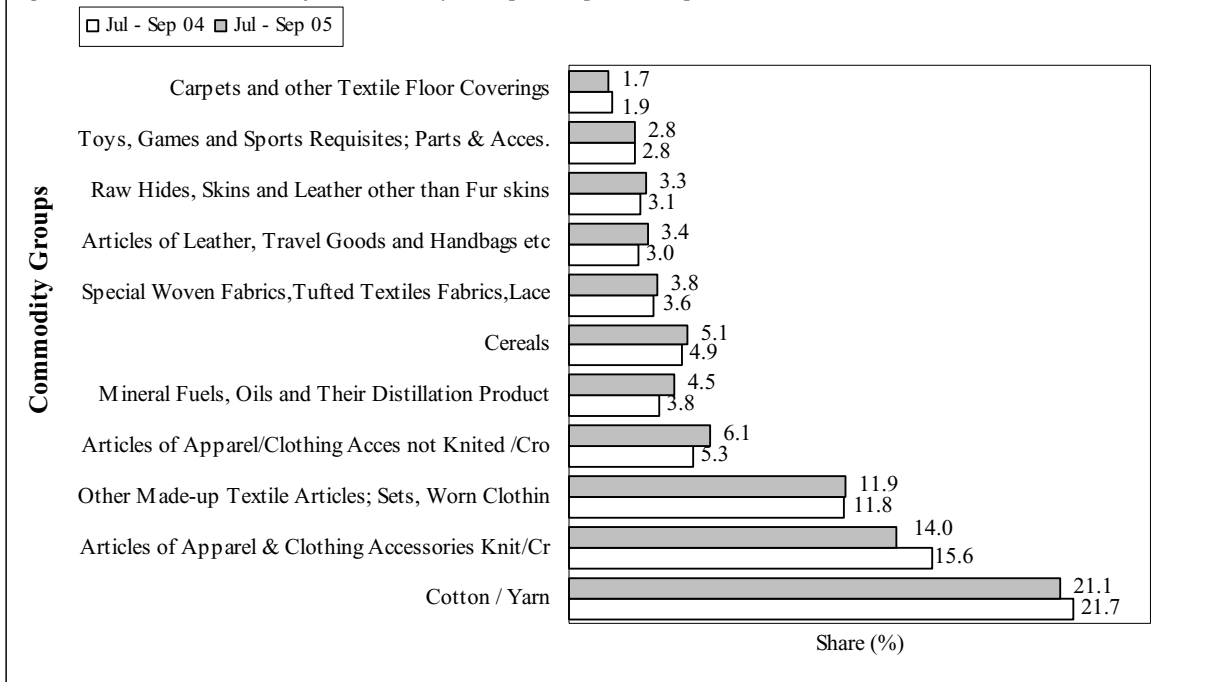
Figure 2: Percent Share of Major Commodity Groups in Export Receipts

Table 3: Export Receipts by Major Countries (Amount in million)

Country	September			July - September		
	2005	2005	2004	2005-2006	2004-2005	% Change
	Pak Rs			US \$		
U. S. A.	19,314	323	274	913	806	13.3
U. A. E	7,125	119	67	282	250	12.8
U. K.	4,968	83	101	229	295	-22.4
Hong Kong	3,650	61	49	170	171	-0.6
Afghanistan	3,541	59	59	198	154	28.6
Germany	3,369	56	53	177	158	12.0
Italy	2,704	45	45	134	122	9.8
Spain	2,192	37	31	105	83	26.5
China	2,026	34	17	97	53	83.0
France	1,752	29	30	96	105	-8.6
Netherlands	1,566	26	24	74	69	7.2
Turkey	1,537	26	19	70	53	32.1
Belgium	1,519	25	23	71	64	10.9
Saudi Arabia	1,469	25	25	82	85	-3.5
Canada	1,139	19	16	54	52	3.8
All Others	17,815	300	266	887	808	9.8
Total	75,686	1,267	1,099	3,639	3,328	9.3

Figure 3: % Share of Major Countries in Export Receipts

Period: Jul- Sep 2005

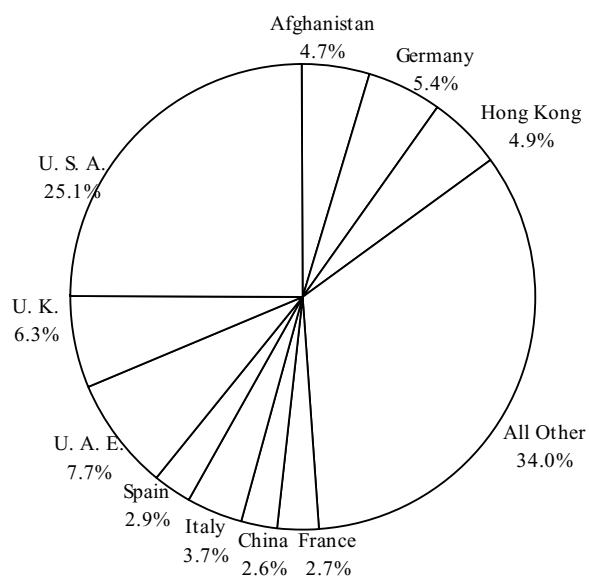


Figure 4: Yearly Export Receipts

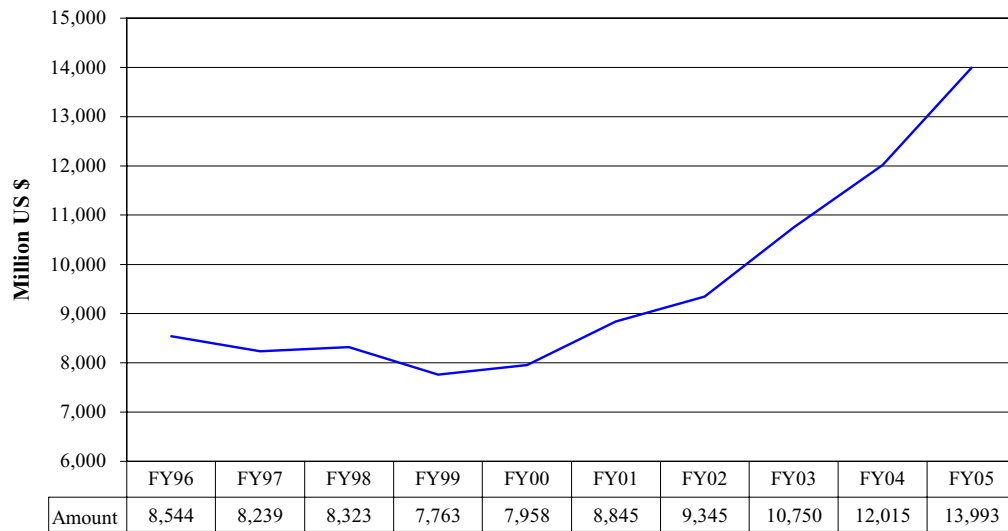


Figure 5: Monthly Export Receipts

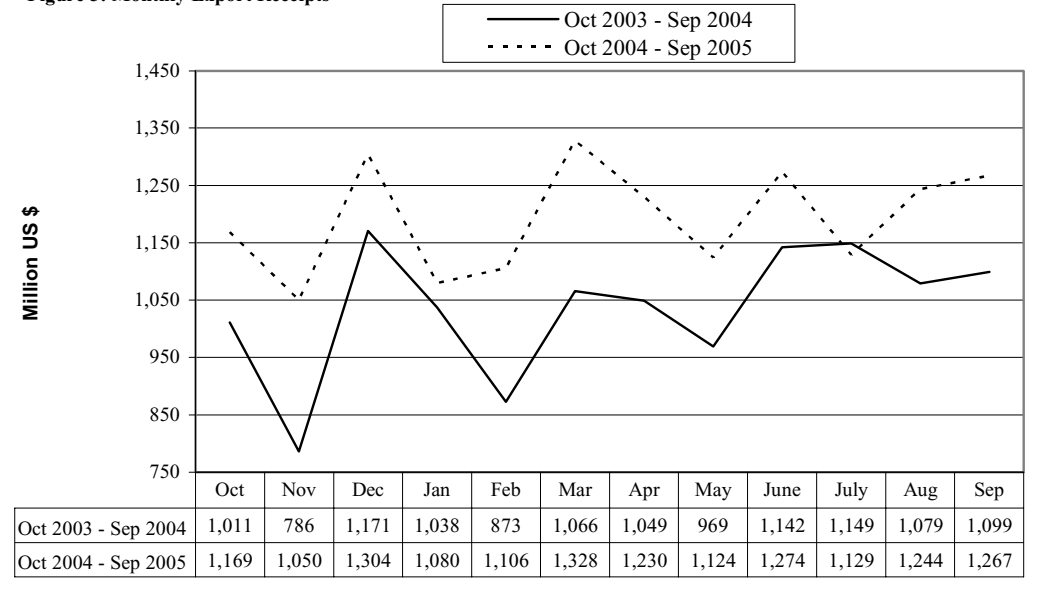


Table 4: Export Receipts Series (Million Rs)

Period	1996-97	1997-98	1998-99	1999-00	2000-01	2001-02	2002-03	2003-04	2004-05	2005-06
Annual	321,610.8	359,261.5	389,019.2	412,082.1	517,495.6	573,987.2	628,655.3	691,827.5	830,687.0	
Growth (%)	12.0	11.7	8.3	5.9	25.6	10.9	9.5	10.0	20.1	
Quarter-wise										
Quarter-I	70,512.1 (21.9)	85,907.9 (23.9)	92,523.2 (23.8)	92,763.8 (22.5)	118,869.7 (23.0)	144,370.5 (25.2)	157,696.1 (25.1)	168,165.9 (24.3)	195,257.1 (23.5)	217,203.0
Quarter-II	81,271.5 (25.3)	91,938.5 (25.6)	94,906.2 (24.4)	98,966.7 (24.0)	119,704.7 (23.1)	150,425.4 (26.2)	147,405.4 (23.4)	170,451.2 (24.6)	210,762.3 (25.4)	
Quarter-III	83,132.8 (25.8)	91,762.1 (25.5)	101,948.1 (26.2)	109,361.2 (26.5)	136,849.1 (26.4)	137,656.1 (24.0)	152,416.7 (24.2)	170,881.2 (24.7)	208,694.2 (25.1)	
Quarter-IV	86,694.2 (27.0)	89,653.0 (25.0)	99,641.7 (25.6)	110,990.4 (26.9)	142,072.1 (27.5)	141,535.2 (24.7)	171,137.2 (27.2)	182,329.2 (26.4)	215,973.5 (26.0)	
Month-wise										
July	23,884.4 (7.4)	29,859.6 (8.3)	30,114.1 (7.7)	32,118.9 (7.8)	36,566.6 (7.1)	46,206.5 (8.1)	54,731.1 (8.7)	57,308.1 (8.3)	66,983.6 (8.1)	67,305.1
August	22,410.5 (7.0)	28,053.3 (7.8)	30,789.3 (7.9)	28,909.1 (7.0)	41,241.3 (8.0)	51,444.5 (9.0)	52,468.8 (8.3)	53,894.1 (7.8)	63,440.2 (7.6)	74,212.3
September	24,217.2 (7.5)	27,995.0 (7.8)	31,619.8 (8.1)	31,735.8 (7.7)	41,061.8 (7.9)	46,719.5 (8.1)	50,496.2 (8.0)	56,963.7 (8.2)	64,833.3 (7.8)	75,685.7
October	27,890.8 (8.7)	33,014.4 (9.2)	32,445.0 (8.3)	31,735.8 (7.7)	39,986.2 (7.7)	57,750.7 (10.1)	50,772.7 (8.1)	58,193.6 (8.4)	70,199.6 (8.5)	
November	25,545.2 (7.9)	28,551.8 (7.9)	30,154.9 (7.8)	31,941.1 (7.8)	38,842.6 (7.5)	48,957.5 (8.5)	49,925.9 (7.9)	45,059.3 (6.5)	62,910.2 (7.6)	
December	28,135.5 (8.7)	30,372.3 (8.5)	32,306.2 (8.3)	35,289.7 (8.6)	40,875.9 (7.9)	43,717.3 (7.6)	46,706.8 (7.4)	67,198.3 (9.7)	77,652.5 (9.3)	
January	25,433.7 (7.9)	28,095.3 (7.8)	33,520.1 (8.6)	35,796.5 (8.7)	48,728.2 (9.4)	47,703 (8.3)	54,668.6 (8.7)	59,554.7 (8.6)	64,194.9 (7.7)	
February	26,727.5 (8.3)	31,554.7 (8.8)	33,477.2 (8.6)	34,895.6 (8.5)	41,297.8 (8.0)	44,534.4 (7.8)	46,788.2 (7.4)	50,093.8 (7.2)	65,651.6 (7.9)	
March	30,971.6 (9.6)	32,112.1 (8.9)	34,950.8 (9.0)	38,669.1 (9.4)	46,823.1 (9.0)	45,418.7 (7.9)	50,959.9 (8.1)	61,232.8 (8.9)	78,847.8 (9.5)	
April	29,725.5 (9.2)	31,557.4 (8.8)	36,146.0 (9.3)	33,202.6 (8.1)	44,794.7 (8.7)	45,944.7 (8.0)	53,358.9 (8.5)	60,284.2 (8.7)	73,076.6 (8.8)	
May	28,658.7 (8.9)	28,788.7 (8.0)	31,055.4 (8.0)	35,401.3 (8.6)	48,124.0 (9.3)	46,348 (8.1)	58,454.1 (9.3)	55,895.0 (8.1)	66,867.2 (8.1)	
June	28,310.0 (8.8)	29,306.9 (8.2)	32,440.3 (8.3)	42,386.5 (10.3)	49,153.3 (9.5)	49,242.5 (8.6)	59,324.1 (9.4)	66,149.9 (9.6)	76,029.7 (9.2)	

Notes: 1. Figures in parentheses are percentage to annual export receipts of the respective years
2. Due to rounding off separate items, totals may show minor differences

Table 5: Export Receipts Series

(Million US\$)

Period	1996-97	1997-98	1998-99	1999-00	2000-01	2001-02	2002-03	2003-04	2004-05	2005-06
Annual	8,239.1	8,323.1	7,762.8	7,958.4	8,844.5	9,344.9	10,750.0	12,015.3	13,993.4	
Growth (%)	-3.6	1.0	-6.7	2.5	11.1	5.7	15.0	11.8	16.5	
Quarter-wise										
Quarter-I	1,967.9 (23.9)	2,115.2 (25.4)	1,887.4 (24.3)	1,795.7 (22.6)	2,192.2 (24.8)	2,251.6 (24.1)	2,649.2 (24.6)	2,910.5 (24.2)	3,327.8 (23.8)	3,639.4
Quarter-II	2,058.1 (25.0)	2,109.0 (25.3)	1,883.1 (24.3)	1,912.0 (24.0)	2,073.9 (23.5)	2,450.9 (26.2)	2,511.5 (23.4)	2,967.7 (24.7)	3,523.0 (25.2)	
Quarter-III	2,066.9 (25.1)	2,077.3 (25.0)	2,039.9 (26.3)	2,111.8 (26.5)	2,291.3 (25.9)	2,288.4 (24.5)	2,625.8 (24.4)	2,976.7 (24.8)	3,514.4 (25.1)	
Quarter-IV	2,146.1 (26.1)	2,021.6 (24.3)	1,952.4 (25.2)	2,138.9 (26.9)	2,287.1 (25.9)	2,354.1 (25.2)	2,963.4 (27.6)	3,160.4 (26.3)	3,628.1 (25.9)	
Month-wise										
July	676.5 (8.2)	735.4 (8.8)	639.6 (8.2)	622.4 (7.8)	696.4 (7.9)	721.0 (7.7)	915.4 (8.5)	992.5 (8.3)	1,149.4 (8.2)	1,128.8
August	629.9 (7.7)	690.6 (8.3)	616.7 (7.9)	559.8 (7.0)	764.0 (8.6)	802.4 (8.6)	881.7 (8.2)	932.6 (7.8)	1,079.0 (7.7)	1,244.0
September	661.5 (8.0)	689.2 (8.3)	631.1 (8.1)	613.5 (7.7)	731.9 (8.3)	728.3 (7.8)	852.1 (7.9)	985.4 (8.2)	1,099.4 (7.9)	1,266.5
October	730.9 (8.9)	774.6 (9.3)	644.0 (8.3)	613.2 (7.7)	687.5 (7.8)	928.3 (9.9)	859.8 (8.0)	1,011.0 (8.4)	1,169.4 (8.4)	
November	627.7 (7.6)	646.6 (7.8)	593.6 (7.7)	617.0 (7.8)	681.4 (7.7)	800.9 (8.6)	852.2 (7.9)	785.9 (6.5)	1,049.6 (7.5)	
December	699.5 (8.5)	687.8 (8.3)	645.4 (8.3)	681.7 (8.6)	704.9 (8.0)	721.6 (7.7)	799.6 (7.4)	1,170.8 (9.7)	1,304.0 (9.3)	
January	632.4 (7.7)	636.2 (7.6)	672.2 (8.7)	691.4 (8.7)	825.0 (9.3)	792.4 (8.5)	939.6 (8.7)	1,037.6 (8.6)	1,079.9 (7.7)	
February	664.5 (8.1)	714.5 (8.6)	667.9 (8.6)	673.7 (8.5)	692.7 (7.8)	740.3 (7.9)	805.6 (7.5)	873.3 (7.3)	1,106.1 (7.9)	
March	770.1 (9.4)	726.6 (8.6)	699.9 (9.0)	746.6 (9.4)	773.6 (8.8)	755.7 (8.1)	880.6 (8.2)	1,065.9 (8.9)	1,328.4 (9.5)	
April	738.4 (9.0)	712.5 (8.6)	717.0 (9.2)	641.1 (8.1)	733.5 (8.3)	764.2 (8.2)	923.5 (8.6)	1,049.1 (8.7)	1,230.2 (8.8)	
May	708.6 (8.6)	651.9 (7.8)	607.8 (7.8)	683.5 (8.6)	778.3 (8.8)	770.9 (8.3)	1,012.5 (9.4)	969.1 (8.1)	1,123.7 (8.0)	
June	699.1 (8.5)	657.2 (7.9)	627.5 (8.1)	814.4 (10.2)	775.3 (8.8)	819.0 (8.8)	1,027.4 (9.6)	1,142.2 (9.5)	1,274.2 (9.1)	

Notes: 1. Figures in parentheses are percentage to annual export receipts of the respective years

2. Due to rounding off separate items, totals may show minor differences