

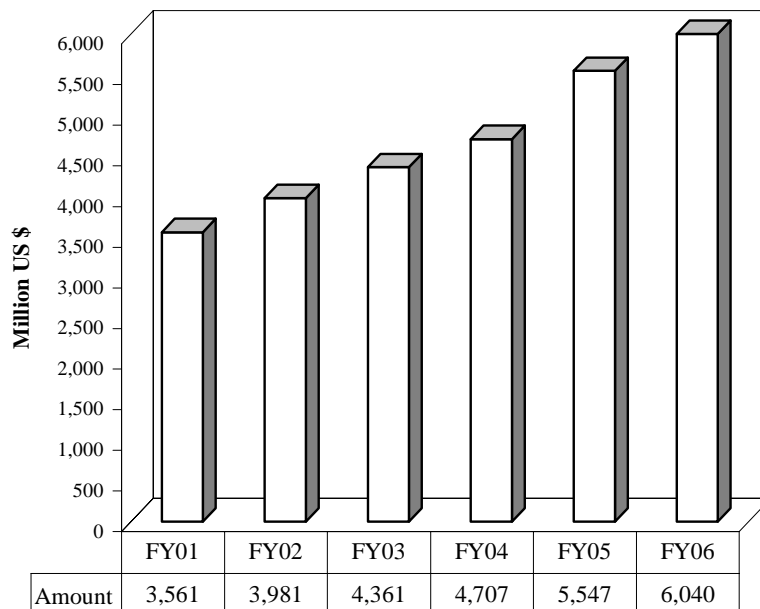
### SUMMARY

(Amount in million)

<b>Table 1: Key Indicators of Export Receipts</b>	<b>Pak. Rs.</b>	<b>US \$</b>
November 2005	69,219	1,158
October 2005	74,159	1,242
%Change during November 2005 over October 2005	-6.7	-6.8
November 2004	62,910	1,050
%Change during November 2005 over November 2004	10.0	10.3
July 2005 – November 2005	360,581	6,040
July 2004 – November 2004	328,367	5,547
%Change during July 2005– November 2005 over July 2004 – November 2004	9.8	8.9
Monthly average during July 2005 – November 2005	72,116	1,208
Monthly average during July 2004 – November 2004	65,673	1,109
FY05	830,687	13,993
FY04	691,827	12,015
%Change during FY05 over FY04	20.1	16.5
Monthly average during FY05	69,224	1,166
Monthly average during FY04	57,652	1,001

**Figure 1: Export Receipts**

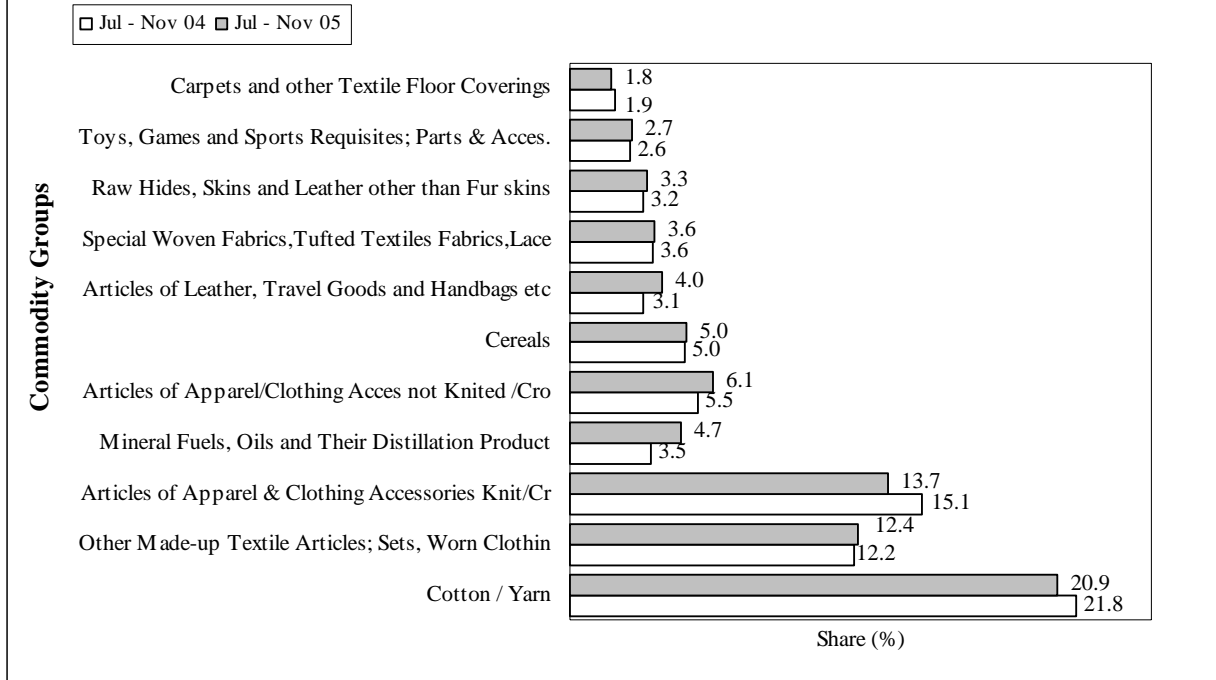
**Period: July- November**



**Table 2: Export Receipts by Major Commodity Groups** (Amount in million)

Commodity	November			July- November		
	2005	2005	2004	2005-2006	2004-2005	%
	Pak Rs.	US \$				Change
Cotton / Yarn	14,625	245	239	1,265	1,207	4.8
Other Made-up Tex Articles; Sets, Worn Clothing	9,458	158	139	748	678	10.3
Articles of Apparel & Clothing Acc Kn/Cr	8,323	139	149	826	837	-1.3
Mineral Fuels, Oils & Their Distillation Product	4,244	71	32	286	194	47.4
Articles of Apparel/Clothing Acc not Kn /Cr	4,144	69	51	371	307	20.8
Cereals	3,651	61	55	304	275	10.5
Articles of Leather, Travel Goods and Handbags	3,444	58	36	240	173	38.7
Special Woven Fab, Tufted Tex Fab, Lace	2,320	39	36	219	197	11.2
Raw Hides, Skins & Leather other than Fur skins	2,276	38	37	198	177	11.9
Toys, Games and Sports Requisites; Parts & Acc.	1,773	30	23	162	145	11.7
Carpets and other Textile Floor Coverings	1,370	23	21	109	107	1.9
Fish and Crustaceans	1,086	18	17	59	53	11.3
Man-Made Filaments	1,073	18	20	91	103	-11.7
Optical, Photographic, Measuring & Medical Inst.	887	15	15	83	76	9.2
Edible Vegetables	820	14	3	59	21	181.0
Man-Made Staple Fibers	704	12	13	93	89	4.5
Plastics and Articles thereof	601	10	20	73	89	-18.0
Animal Vegetable Fats, Oils & Cleavage Products	592	10	8	45	40	12.5
All Others	7,828	130	136	809	779	3.9
<b>Total</b>	<b>69,219</b>	<b>1,158</b>	<b>1,050</b>	<b>6,040</b>	<b>5,547</b>	<b>8.9</b>

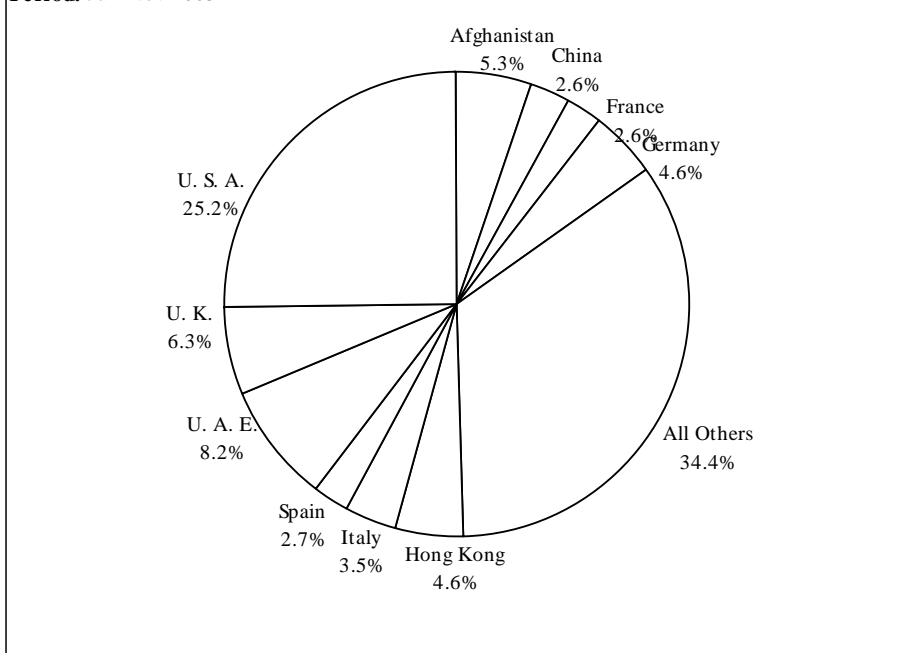
Kn: Knitted, Cr: Crocheted, Acc: Accessories, Tex: Textile, Fab: Fabrics

**Figure 2: Percent Share of Major Commodity Groups in Export Receipts**

**Table 3: Export Receipts by Major Countries** (Amount in million)

Country	November			July - November		
	2005	2005	2004	2005-2006	2004-2005	% Change
	Pak Rs			US \$		
U. S. A.	17,262	289	241	1,525	1,317	15.8
U. A. E.	6,982	117	80	494	453	9.1
U. K.	4,089	68	97	378	474	-20.3
Afghanistan	3,541	59	40	323	253	27.7
Hong Kong	3,047	51	52	279	276	1.1
Germany	2,856	48	55	280	270	3.7
Italy	2,131	36	44	211	209	1.0
France	1,754	29	30	158	168	-6.0
China	1,738	29	23	156	97	60.8
Spain	1,523	25	26	161	135	19.3
Saudi Arabia	1,480	25	24	130	141	-7.8
Netherlands (Holland)	1,248	21	21	117	109	7.3
India	1,240	21	8	100	40	150.0
Turkey	1,233	21	16	118	86	37.2
Belgium	1,213	20	26	115	115	0.0
All Others	17,882	299	267	1,495	1,404	6.5
<b>Total</b>	<b>69,219</b>	<b>1,158</b>	<b>1,050</b>	<b>6,040</b>	<b>5,547</b>	<b>8.9</b>

**Figure 3: % Share of Major Countries in Export Receipts**  
 Period: Jul- Nov 2005



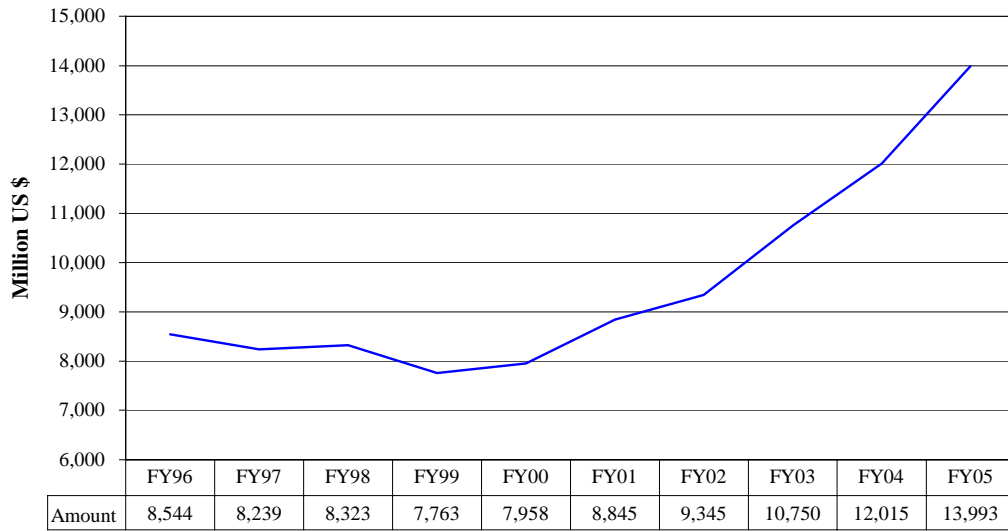
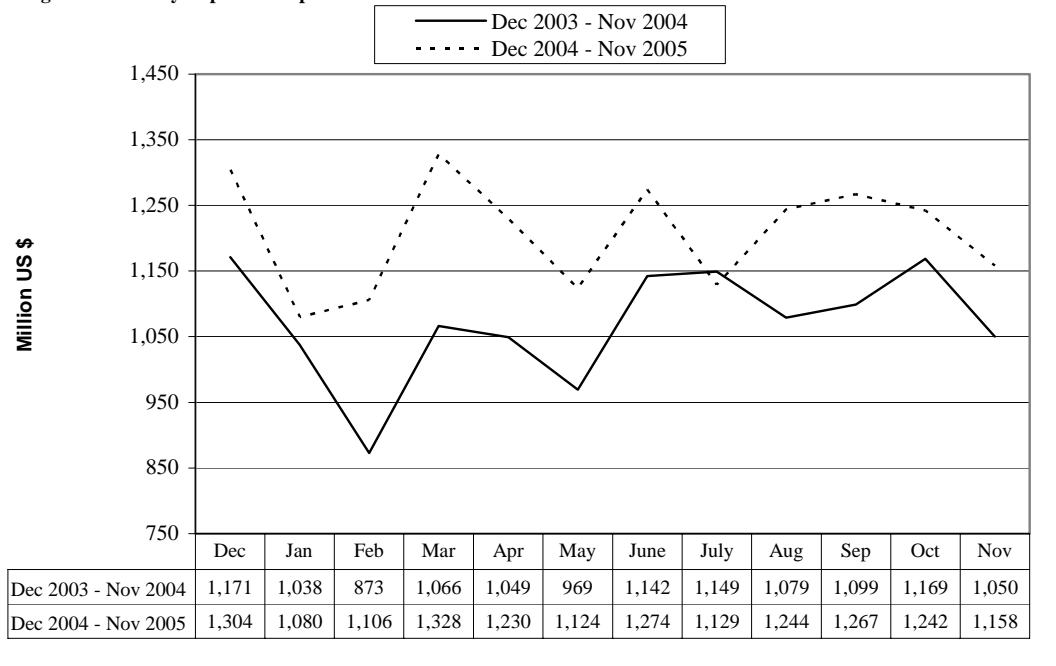
**Figure 4: Yearly Export Receipts****Figure 5: Monthly Export Receipts**

Table 4: Export Receipts Series

(Million Rs)

Period	1996-97	1997-98	1998-99	1999-00	2000-01	2001-02	2002-03	2003-04	2004-05	2005-06
Annual	321,610.8	359,261.5	389,019.2	412,082.1	517,495.6	573,987.2	628,655.3	691,827.5	830,687.0	
Growth (%)	12.0	11.7	8.3	5.9	25.6	10.9	9.5	10.0	20.1	
<b>Quarter-wise</b>										
Quarter-I	70,512.1 (21.9)	85,907.9 (23.9)	92,523.2 (23.8)	92,763.8 (22.5)	118,869.7 (23.0)	144,370.5 (25.2)	157,696.1 (25.1)	168,165.9 (24.3)	195,257.1 (23.5)	217,203.0
Quarter-II	81,271.5 (25.3)	91,938.5 (25.6)	94,906.2 (24.4)	98,966.7 (24.0)	119,704.7 (23.1)	150,425.4 (26.2)	147,405.4 (23.4)	170,451.2 (24.6)	210,762.3 (25.4)	
Quarter-III	83,132.8 (25.8)	91,762.1 (25.5)	101,948.1 (26.2)	109,361.2 (26.5)	136,849.1 (26.4)	137,656.1 (24.0)	152,416.7 (24.2)	170,881.2 (24.7)	208,694.2 (25.1)	
Quarter-IV	86,694.2 (27.0)	89,653.0 (25.0)	99,641.7 (25.6)	110,990.4 (26.9)	142,072.1 (27.5)	141,535.2 (24.7)	171,137.2 (27.2)	182,329.2 (26.4)	215,973.5 (26.0)	
<b>Month-wise</b>										
July	23,884.4 (7.4)	29,859.6 (8.3)	30,114.1 (7.7)	32,118.9 (7.8)	36,566.6 (7.1)	46,206.5 (8.1)	54,731.1 (8.7)	57,308.1 (8.3)	66,983.6 (8.1)	67,305.1
August	22,410.5 (7.0)	28,053.3 (7.8)	30,789.3 (7.9)	28,909.1 (7.0)	41,241.3 (8.0)	51,444.5 (9.0)	52,468.8 (8.3)	53,894.1 (7.8)	63,440.2 (7.6)	74,212.3
September	24,217.2 (7.5)	27,995.0 (7.8)	31,619.8 (8.1)	31,735.8 (7.7)	41,061.8 (7.9)	46,719.5 (8.1)	50,496.2 (8.0)	56,963.7 (8.2)	64,833.3 (7.8)	75,685.7
October	27,890.8 (8.7)	33,014.4 (9.2)	32,445.0 (8.3)	31,735.8 (7.7)	39,986.2 (7.7)	57,750.7 (10.1)	50,772.7 (8.1)	58,193.6 (8.4)	70,199.6 (8.5)	74,158.6
November	25,545.2 (7.9)	28,551.8 (7.9)	30,154.9 (7.8)	31,941.1 (7.8)	38,842.6 (7.5)	48,957.5 (8.5)	49,925.9 (7.9)	45,059.3 (6.5)	62,910.2 (7.6)	69,219.2
December	28,135.5 (8.7)	30,372.3 (8.5)	32,306.2 (8.3)	35,289.7 (8.6)	40,875.9 (7.9)	43,717.3 (7.6)	46,706.8 (7.4)	67,198.3 (9.7)	77,652.5 (9.3)	
January	25,433.7 (7.9)	28,095.3 (7.8)	33,520.1 (8.6)	35,796.5 (8.7)	48,728.2 (9.4)	47,703 (8.3)	54,668.6 (8.7)	59,554.7 (8.6)	64,194.9 (7.7)	
February	26,727.5 (8.3)	31,554.7 (8.8)	33,477.2 (8.6)	34,895.6 (8.5)	41,297.8 (8.0)	44,534.4 (7.8)	46,788.2 (7.4)	50,093.8 (7.2)	65,651.6 (7.9)	
March	30,971.6 (9.6)	32,112.1 (8.9)	34,950.8 (9.0)	38,669.1 (9.4)	46,823.1 (9.0)	45,418.7 (7.9)	50,959.9 (8.1)	61,232.8 (8.9)	78,847.8 (9.5)	
April	29,725.5 (9.2)	31,557.4 (8.8)	36,146.0 (9.3)	33,202.6 (8.1)	44,794.7 (8.7)	45,944.7 (8.0)	53,358.9 (8.5)	60,284.2 (8.7)	73,076.6 (8.8)	
May	28,658.7 (8.9)	28,788.7 (8.0)	31,055.4 (8.0)	35,401.3 (8.6)	48,124.0 (9.3)	46,348 (8.1)	58,454.1 (9.3)	55,895.0 (8.1)	66,867.2 (8.1)	
June	28,310.0 (8.8)	29,306.9 (8.2)	32,440.3 (8.3)	42,386.5 (10.3)	49,153.3 (9.5)	49,242.5 (8.6)	59,324.1 (9.4)	66,149.9 (9.6)	76,029.7 (9.2)	

Notes: 1. Figures in parentheses are percentage to annual export receipts of the respective years  
2. Due to rounding off separate items, totals may show minor differences

**Table 5: Export Receipts Series**

( Million US\$)

Period	1996-97	1997-98	1998-99	1999-00	2000-01	2001-02	2002-03	2003-04	2004-05	2005-06
Annual	8,239.1	8,323.1	7,762.8	7,958.4	8,844.5	9,344.9	10,750.0	12,015.3	13,993.4	
Growth (%)	-3.6	1.0	-6.7	2.5	11.1	5.7	15.0	11.8	16.5	
<b>Quarter-wise</b>										
Quarter-I	1,967.9 (23.9)	2,115.2 (25.4)	1,887.4 (24.3)	1,795.7 (22.6)	2,192.2 (24.8)	2,251.6 (24.1)	2,649.2 (24.6)	2,910.5 (24.2)	3,327.8 (23.8)	3,639.4
Quarter-II	2,058.1 (25.0)	2,109.0 (25.3)	1,883.1 (24.3)	1,912.0 (24.0)	2,073.9 (23.5)	2,450.9 (26.2)	2,511.5 (23.4)	2,967.7 (24.7)	3,523.0 (25.2)	
Quarter-III	2,066.9 (25.1)	2,077.3 (25.0)	2,039.9 (26.3)	2,111.8 (26.5)	2,291.3 (25.9)	2,288.4 (24.5)	2,625.8 (24.4)	2,976.7 (24.8)	3,514.4 (25.1)	
Quarter-IV	2,146.1 (26.1)	2,021.6 (24.3)	1,952.4 (25.2)	2,138.9 (26.9)	2,287.1 (25.9)	2,354.1 (25.2)	2,963.4 (27.6)	3,160.4 (26.3)	3,628.1 (25.9)	
<b>Month-wise</b>										
July	676.5 (8.2)	735.4 (8.8)	639.6 (8.2)	622.4 (7.8)	696.4 (7.9)	721.0 (7.7)	915.4 (8.5)	992.5 (8.3)	1,149.4 (8.2)	1,128.8
August	629.9 (7.7)	690.6 (8.3)	616.7 (7.9)	559.8 (7.0)	764.0 (8.6)	802.4 (8.6)	881.7 (8.2)	932.6 (7.8)	1,079.0 (7.7)	1,244.0
September	661.5 (8.0)	689.2 (8.3)	631.1 (8.1)	613.5 (7.7)	731.9 (8.3)	728.3 (7.8)	852.1 (7.9)	985.4 (8.2)	1,099.4 (7.9)	1,266.5
October	730.9 (8.9)	774.6 (9.3)	644.0 (8.3)	613.2 (7.7)	687.5 (7.8)	928.3 (9.9)	859.8 (8.0)	1,011.0 (8.4)	1,169.4 (8.4)	1,242.0
November	627.7 (7.6)	646.6 (7.8)	593.6 (7.7)	617.0 (7.8)	681.4 (7.7)	800.9 (8.6)	852.2 (7.9)	785.9 (6.5)	1,049.6 (7.5)	1,158.2
December	699.5 (8.5)	687.8 (8.3)	645.4 (8.3)	681.7 (8.6)	704.9 (8.0)	721.6 (7.7)	799.6 (7.4)	1,170.8 (9.7)	1,304.0 (9.3)	
January	632.4 (7.7)	636.2 (7.6)	672.2 (8.7)	691.4 (8.7)	825.0 (9.3)	792.4 (8.5)	939.6 (8.7)	1,037.6 (8.6)	1,079.9 (7.7)	
February	664.5 (8.1)	714.5 (8.6)	667.9 (8.6)	673.7 (8.5)	692.7 (7.8)	740.3 (7.9)	805.6 (7.5)	873.3 (7.3)	1,106.1 (7.9)	
March	770.1 (9.4)	726.6 (8.6)	699.9 (9.0)	746.6 (9.4)	773.6 (8.8)	755.7 (8.1)	880.6 (8.2)	1,065.9 (8.9)	1,328.4 (9.5)	
April	738.4 (9.0)	712.5 (8.6)	717.0 (9.2)	641.1 (8.1)	733.5 (8.3)	764.2 (8.2)	923.5 (8.6)	1,049.1 (8.7)	1,230.2 (8.8)	
May	708.6 (8.6)	651.9 (7.8)	607.8 (7.8)	683.5 (8.6)	778.3 (8.8)	770.9 (8.3)	1,012.5 (9.4)	969.1 (8.1)	1,123.7 (8.0)	
June	699.1 (8.5)	657.2 (7.9)	627.5 (8.1)	814.4 (10.2)	775.3 (8.8)	819.0 (8.8)	1,027.4 (9.6)	1,142.2 (9.5)	1,274.2 (9.1)	

Notes: 1. Figures in parentheses are percentage to annual export receipts of the respective years

2. Due to rounding off separate items, totals may show minor differences